

# Euronext® Vigeo World 120 Index

Index	Euronext® Vigeo World 120 Index (QS0011250840)
Benchmark	Euronext® World (NL0015000IB0)

## Objective

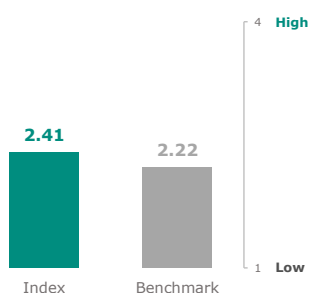
The Euronext® Vigeo World 120 index consists of companies included in the World Equities Universe, covering the the 1500 largest free-float market capitalizations in North American, Asia-Pacific and Europe. Companies may be excluded if their level of commitment is insufficient with regard to their overall score or their score in one of six key areas reviewed in the Equitics methodology or are subject to serious, proved, or recurrent controversies. Then 120 highest ranking companies are selected according to their overall Equitics score. The index is Non-Market capitalization weighted, weighting are based on the overall Equitics scores. The index serves as an underlying for structured products, funds and exchange traded funds. The index rules are available on our website. Euronext acts as Supervisor. All our rulebooks can be found at: <https://live.euronext.com/en/products-indices/index-rules>.

This ESG Report provides information on ESG factors aggregated at the index level within the framework of the Benchmark Regulation (BMR), the Sustainable Finance Disclosure Regulation (SFDR) and the European Union Taxonomy Regulation. The metrics on ESG factors in this ESG Report are provided by ISS ESG and are described at:

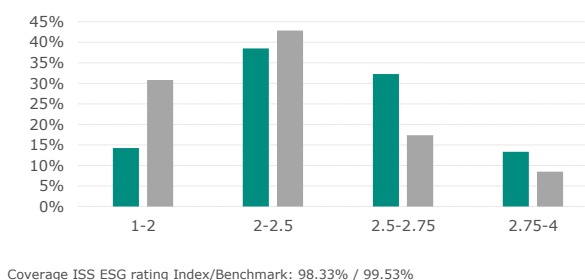
<https://live.euronext.com/en/products/indices/rules-esg-report-disclosures-definitions>.

## ESG Performance

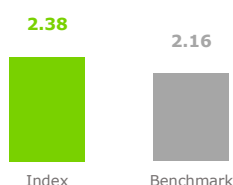
Weighted average ESG rating



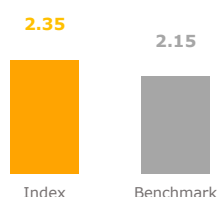
ESG score distribution



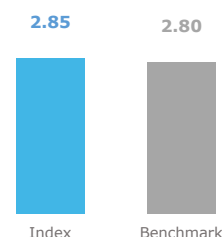
### Environmental



### Social



### Governance



ISS ESG Corporate Rating provides highly relevant, material and forward-looking environmental, social and governance (ESG) data and performance assessments. The overall analysis is graded on a twelve-point scale from 4(A+) where the company shows excellent performance to 1(D-) where the company shows poor performance or fails to demonstrate any commitment to appropriately address the topic. The rating grasps ESG risks, opportunities and impact along the entire corporate value chain, including a dedicated SDG-based component measuring positive and negative impact of products and services as well as integrating the existence and severity of controversies and violations of global norms in the topic-specific and overall assessment. Drawing on a pool of more than 700 indicators developed in house with clearly defined performance expectations and scoring models, ISS ESG sector specialists along with a dedicated in-house team of methodology experts select a set of about 100 criteria for each industry.

Performance data on more than 30 ESG topics available across all industries and based on in-depth analysis of various factors :

#### ENVIRONMENT

- Climate Change Strategy
- Eco-Efficiency
- Energy Management
- Environmental Impact of Product Portfolio
- Environmental Management
- Water Risk and Impact
- And more

#### SOCIAL

- Equal Opportunities
- Freedom of Association
- Health and Safety
- Human Rights
- Product Responsibility
- Social Impact of Product Portfolio
- Supply Chain Management
- Taxes
- And more

#### GOVERNANCE

- Business Ethics
- Compliance
- Independence of the Board
- Voting Rights
- Shareholder Participation
- Remuneration
- And more

# Euronext® Vigeo World 120 Index

Index	Euronext® Vigeo World 120 Index (QS0011250840)
Benchmark	Euronext® World (NL0015000IB0)

## Environmental Indicators

ISS ESG Environmental rating provides a numeric score from 1 (D-), being poor, to 4 (A+), being high, linked to the rated entity's Environmental rating. The Environmental rating is based on an assessment of performance across key environmental metrics including energy management, water risk and impact, waste management, ecoefficiency, sector specific environmental aspects along the value chain, and other issues.

Main factors taken into account :

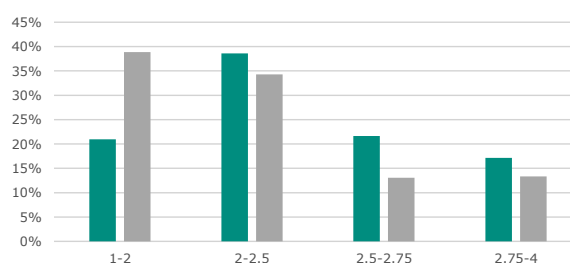
- Climate Change Strategy
- Energy Management
- Environmental Management
- Eco-Efficiency
- Environmental Impact of Product Portfolio
- Water Risk and Impact

### Environmental score



Coverage Index/Benchmark: 98.33% / 99.53%

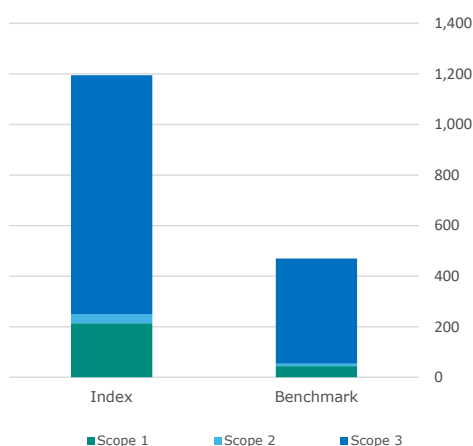
### Environmental score distribution



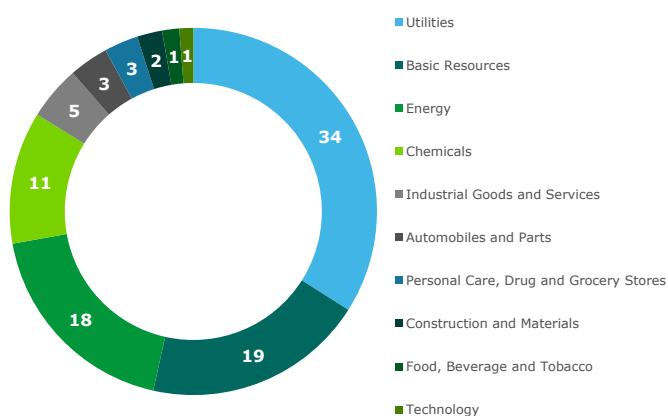
## GHG Emissions

- Carbon footprint: aggregated emissions (tCO<sub>2</sub>e) from Scopes 1, 2, and 3 per million EUR of Enterprise Value
- GHG intensity: aggregated emissions (tCO<sub>2</sub>e) from Scopes 1, 2, and 3 per million EUR of revenue

### Carbon footprint



### Index Top Sectors Contributions to Carbon Footprint (%)



### Carbon footprint tCO<sub>2</sub>e/Enterprise Value

### GHG intensity tCO<sub>2</sub>e/Revenue €

	Coverage (%) Scope 1,2,3	Estimated (%)	Estimated Trust Score	Scope 1	Scope 2	Scope 3	Total Scope 1,2,3	Coverage (%) Scope 1,2,3	Total Scope 1,2	Total Scope 1,2,3
Index	98.2%	2.0%	0.93	213.6	35.0	945.9	1,194.5	98.2%	448.7	2,293.4
Benchmark	99.7%	7.1%	0.88	43.7	9.8	416.1	469.6	99.7%	150.2	1,263.6
Net Performance	-1.49 p	5.15 p	0.05	-388.75%	-257.30%	-127.32%	-154.36%	-1.49 p	-198.78%	-81.50%

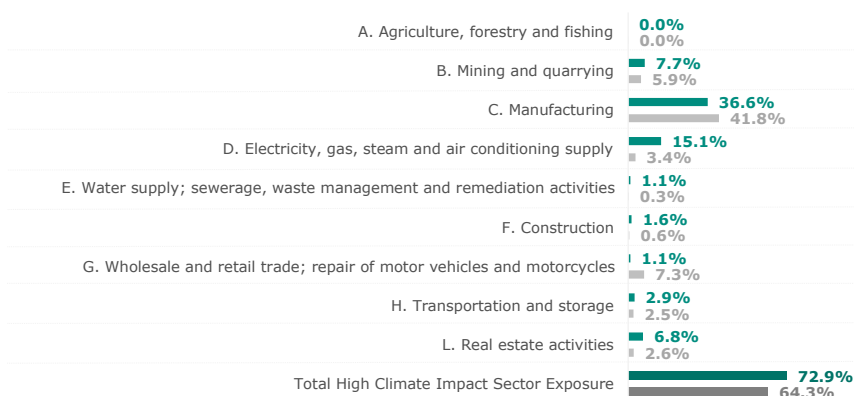
Based on ISS ESG data, the carbon footprint scope 1,2,3 of the index is 154.36% higher than the benchmark and the GHG intensity scope 1,2,3 of the index is 81.50% higher than the benchmark. The percentage of GHG emissions reported versus estimated on GHG intensity scope 1 + 2 is 98.03% of the total weight of the index, 92.88% for the benchmark.

# Euronext® Vigeo World 120 Index

**EURONEXT**  
Indices

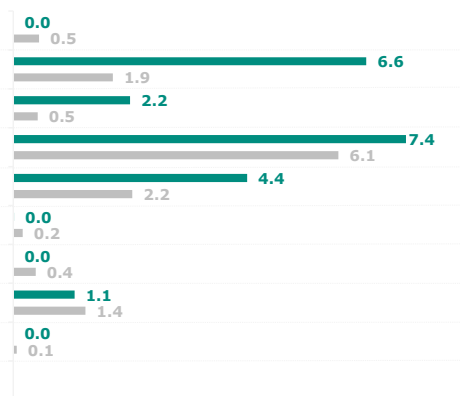
Index	Euronext® Vigeo World 120 Index (QS0011250840)
Benchmark	Euronext® World (NL0015000IB0)

## High Climate Impact Sectors Exposure (NACE)



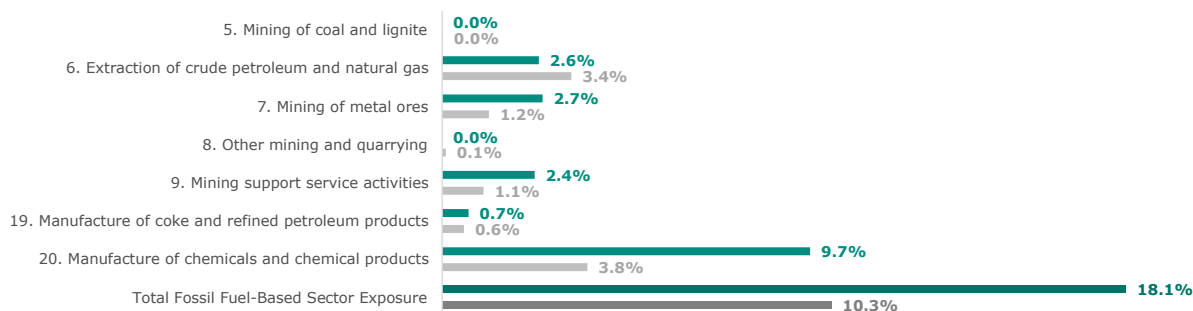
NACE Coverage Index/Benchmark: 99.08% / 99.95%

## Energy Consumption per High Climate Impact Sectors



Energy Consumption Coverage Index/Benchmark: 47.48% / 37.75%

## Fossil Fuel-Based Sectors Exposure (NACE)



NACE Coverage Index/Benchmark: 99.08% / 99.95%

	Index			Benchmark		
	Impact [year n]	Impact [year n-1]	Coverage [year n]	Impact [year n]	Impact [year n-1]	Coverage [year n]
Exposure to activities included in the environmental goods and services sector	2.0%	-	84.4%	1.0%	-	85.8%
Exposure to companies active in the fossil fuel sector	18.7%	-	98.2%	11.2%	-	99.7%
Exposure to climate-related physical risks	58.9	-	97.1%	55.3	-	97.2%
Share of energy sources used – Coal, nuclear and unclear energy sources	52.3%	-	67.3%	54.6%	-	73.0%
Share of energy sources used – Natural gas, waste-to-energy and biomass	34.8%	-	61.2%	24.1%	-	62.4%
Share of non-renewable energy consumption	82.7%	-	57.9%	72.0%	-	63.1%
Share of non-renewable energy production	0.09%	-	92.7%	0.03%	-	94.4%
Energy consumption intensity	2.69	-	47.5%	0.58	-	37.7%
Emissions to water	0.84	-	11.7%	0.13	-	4.7%
Hazardous waste ratio	426.3	-	15.5%	86.5	-	19.8%
Emissions of air pollutants	2.4	-	23.1%	613.6	-	7.7%
Water usage and recycling	31,988	-	24.2%	38,135	-	18.5%
Exposure to companies without water management policies	5.1%	-	68.7%	15.9%	-	56.8%
Non-recycled waste ratio	22.79	-	37.0%	5.17	-	32.6%
Natural species and protected areas	1.0%	-	98.2%	0.1%	-	99.7%
Activities negatively affecting biodiversity sensitive areas	0.0%	-	98.2%	0.0%	-	99.7%

# Euronext® Vigeo World 120 Index

Index	Euronext® Vigeo World 120 Index (QS0011250840)
Benchmark	Euronext® World (NL0015000IB0)

## Social Indicators

ISS ESG Social rating provides a numeric score from 1 (D-), being poor, to 4 (A+), being high, linked to the rated entity's Social rating. The Social rating is based on an assessment of performance across key social sustainability metrics, including staff and suppliers, health and safety, human rights, sector specific product responsibility, and other issues.

Main factors taken into account :

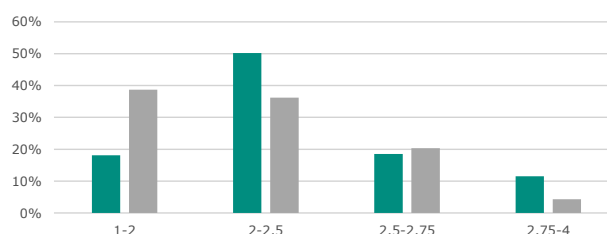
- Equal Opportunities
- Freedom of Association
- Human Rights
- Product Responsibility
- Social Impact of Product
- Supply Chain Management
- Taxes

### Social score



Coverage Index/Benchmark: 98.33% / 99.53%

### Social score distribution



1

**Company is in Social Violations**  
8 in benchmark

Ag. Weight & Coverage Index/Bench: 0.7% (73.3%) / 2.7% (72.5%)



2

**Companies are in violation with UNGC or OECD guidelines**  
14 in benchmark

Ag. Weight & Coverage Index/Bench: 1.7% (98.2%) / 5.6% (99.7%)



10

**Companies lack of human rights policy**  
473 in benchmark

Ag. Weight & Coverage Index/Bench: 7.7% (97.5%) / 26.2% (99.4%)



16

**Companies lack of a supplier code of conduct**  
493 in benchmark

Ag. Weight & Coverage Index/Bench: 12.1% (97.5%) / 19.8% (99.4%)



0

**Companies have insufficient whistleblower protection**  
5 in benchmark

Ag. Weight & Coverage Index/Bench: 0.0% (79.2%) / 0.1% (91.2%)



6

**Companies lack of processes and compliance mechanisms to monitor compliance with UNGC and OECD guidelines**  
440 in benchmark

Ag. Weight & Coverage Index/Bench: 4.3% (97.5%) / 20.9% (99.4%)



	Index			Benchmark		
	Impact [year n]	Impact [year n-1]	Coverage [year n]	Impact [year n]	Impact [year n-1]	Coverage [year n]
Controversial weapons sector exposure	1.1%	-	99.1%	2.4%	-	99.9%
Tobacco involvement exposure	0.1%	-	99.1%	0.8%	-	99.9%
Gender pay gap	2.7%	-	13.4%	6.1%	-	8.4%
Ratio of accidents, injuries, fatalities	0.57	-	70.9%	0.75	-	41.7%
Exposure to companies without workplace accident prevention policies	4.1%	-	79.2%	35.2%	-	91.2%
Exposure to companies with a lack of human rights due diligence procedures	51.9%	-	96.4%	59.1%	-	99.1%

# Euronext® Vigeo World 120 Index

**EURONEXT**  
Indices

Index	Euronext® Vigeo World 120 Index (QS0011250840)
Benchmark	Euronext® World (NL0015000IB0)

## Governance Indicators

ISS ESG Governance rating provides a numeric score from 1 (D-) to 4 (A+) linked to the rated entity's Governance rating. The Governance rating is based on an assessment of performance across key governance metrics, including business ethics, corporate governance, and other issues.

Main factors taken into account :

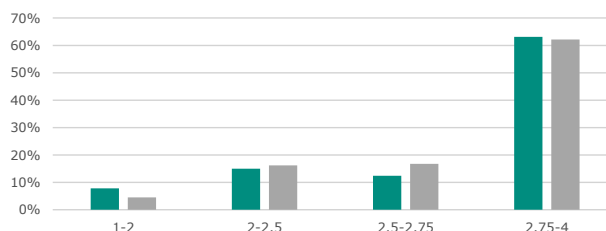
- Business Ethics
- Compliance
- Independence of the Board
- Voting Rights
- Shareholder Participation
- Remuneration

### Governance score



Coverage Index/Benchmark: 98.33% / 99.53%

### Governance score distribution



**72%**

**Board members are independent**  
**81% in benchmark**

Coverage Index/Benchmark: 83.97% / 91.76%



**0**

**Companies lack anti-corruption and anti-bribery policies**  
**0 in benchmark**

Coverage Index/Benchmark: 98.23% / 99.68%



**40%**

**Female board members**  
**35% in benchmark**

Coverage Index/Benchmark: 83.97% / 91.76%



**43**

**Companies without carbon emission reduction initiatives**  
**817 in benchmark**

Ag. Weight & Coverage Index/Bench: 33.3% (98.2%) / 45.4% (99.7%)



**5%**

**Operate without due diligence policies (ILO 1-8)**  
**19% in benchmark**

Coverage Index/Benchmark: 98.33% / 99.53%



**196**

**Excessive CEO pay ratio**  
**261 in benchmark**

Coverage Index/Benchmark: 21.76% / 62.85%

# Euronext® Vigeo World 120 Index

**EURONEXT**  
Indices

Index	Euronext® Vigeo World 120 Index (QS0011250840)
Benchmark	Euronext® World (NL0015000IB0)

## Principal Adverse Sustainability Impacts



Mandatory Indicators		Index			Benchmark		
		Impact [year n]	Impact [year n-1]	Coverage [year n]	Impact [year n]	Impact [year n-1]	Coverage [year n]
1	GHG emissions Scope 1	217.47	-	98.2%	43.83	-	99.7%
	GHG emissions Scope 2	35.66	-	98.2%	9.83	-	99.7%
	GHG emissions Scope 3	963.0	-	98.2%	417.3	-	99.7%
	Total GHG emissions	1216.1	-	98.2%	471.0	-	99.7%
2	Carbon footprint	1216.1	-	98.2%	471.0	-	99.7%
3	Greenhouse gas (GHG) intensity	2334.8	-	98.2%	1267.2	-	99.7%
4	Exposure to companies active in the fossil fuel sector	18.7%	-	98.2%	11.2%	-	99.7%
5	Share of energy sources used – Coal, nuclear and unclear energy sources	52.3%	-	67.3%	54.6%	-	73.0%
	Share of energy sources used – Natural gas, waste-to-energy and biomass	34.8%	-	61.2%	24.1%	-	62.4%
	Share of non-renewable energy consumption	82.7%	-	57.9%	72.0%	-	63.1%
	Share of non-renewable energy production	9.0%	-	92.7%	2.7%	-	94.4%
6	Energy consumption intensity	2.69	-	47.5%	0.58	-	37.7%
7	Activities negatively affecting biodiversity sensitive areas	0%	-	98.2%	0%	-	99.7%
8	Emissions to water	0.84	-	11.7%	0.13	-	4.7%
9	Hazardous waste ratio	426.34	-	15.5%	86.48	-	19.8%
10	Count of companies in violations of UN Global Compact principles and Organisation for Economic Cooperation and Development (OECD) Guidelines for Multinational Enterprises	2	-	98.2%	14	-	99.7%
11	Count of companies with lack of processes and compliance mechanisms to monitor compliance with UN Global Compact principles and OECD Guidelines for Multinational Enterprises	6	-	97.5%	440	-	99.4%
12	Gender pay gap	2.7%	-	13.4%	6.1%	-	8.4%
14	Controversial weapons sector exposure	1.1%	-	99.1%	2.4%	-	99.9%

# Euronext® Vigeo World 120 Index

Index	Euronext® Vigeo World 120 Index (QS0011250840)
Benchmark	Euronext® World (NL0015000IB0)

## Principal Adverse Sustainability Impacts



Additional Indicators		Index			Benchmark		
		Impact [year n]	Impact [year n-1]	Coverage [year n]	Impact [year n]	Impact [year n-1]	Coverage [year n]
1	Emissions of inorganic pollutants	N/A	-	N/A	N/A	-	N/A
2	Emissions of air pollutants	2.41	-	23.1%	613.58	-	7.7%
3	Emissions of ozone depletion substances	N/A	-	N/A	N/A	-	N/A
4	Investing in companies without carbon emission reduction initiatives	33.3%	-	98.2%	45.4%	-	99.7%
5	Breakdown of energy consumption by type of non-renewable sources of energy	N/A	-	N/A	N/A	-	N/A
6	Water usage and recycling	31,988	-	24.2%	38,135	-	18.5%
7	Investments in companies without water management policies	5.06%	-	68.7%	15.88%	-	56.8%
8	Exposure to areas of high water stress	N/A	-	N/A	N/A	-	N/A
9	Investments in companies producing chemicals	N/A	-	N/A	N/A	-	N/A
10	Land degradation, desertification, soil sealing	N/A	-	N/A	N/A	-	N/A
11	Investments in companies without sustainable land/agriculture practices	N/A	-	N/A	N/A	-	N/A
12	Investments in companies without sustainable oceans/seas practices	N/A	-	N/A	N/A	-	N/A
13	Non-recycled waste ratio	22.79	-	37.0%	5.17	-	32.6%
14	Natural species and protected areas	1.0%	-	98.2%	0.1%	-	99.7%
15	Deforestation	N/A	-	N/A	N/A	-	N/A
16	Share of securities not certified as green under a future EU legal act setting up an EU Green Bond Standard	N/A	-	N/A	N/A	-	N/A
17	Investments in companies without workplace accident prevention policies	4.1%	-	79.2%	35.2%	-	91.2%
18	Rate of accidents	N/A	-	N/A	N/A	-	N/A
19	Number of days lost to injuries, accidents, fatalities or illness	N/A	-	N/A	N/A	-	N/A
20	Lack of a supplier code of conduct	12.1%	-	97.5%	19.8%	-	99.4%
21	Lack of grievance / complaints handling mechanism related to employee matters	N/A	-	N/A	N/A	-	N/A
22	Insufficient whistleblower protection	0.0%	-	79.2%	0.1%	-	91.2%
23	Incidents of discrimination	N/A	-	N/A	N/A	-	N/A
24	Excessive CEO pay ratio	195.7	-	21.8%	260.5	-	62.8%
25	Lack of a human rights policy	7.65%	-	97.5%	26.20%	-	99.4%
26	Exposure of the benchmark portfolio to companies without due diligence policies on issues addressed by the fundamental International Labor Organisation Conventions 1 to 8	5.08%	-	98.3%	18.93%	-	99.5%
27	Lack of processes and measures for preventing trafficking in human beings	N/A	-	N/A	N/A	-	N/A
28	Operations and suppliers at significant risk of incidents of child labour	N/A	-	N/A	N/A	-	N/A
29	Operations and suppliers at significant risk of incidents of forced or compulsory labour	N/A	-	N/A	N/A	-	N/A
30	Number of identified cases of severe human rights issues and incidents	N/A	-	N/A	N/A	-	N/A
31	Lack of anti-corruption and anti-bribery policies	N/A	-	N/A	N/A	-	N/A
32	Cases of insufficient action taken to address breaches of standards of anti-corruption and antibribery	0	-	98.2%	0	-	99.7%
33	Numbers of convictions and amount of fines for violations of anti-corruption and anti-bribery laws	N/A	-	N/A	N/A	-	N/A

# Euronext® Vigeo World 120 Index

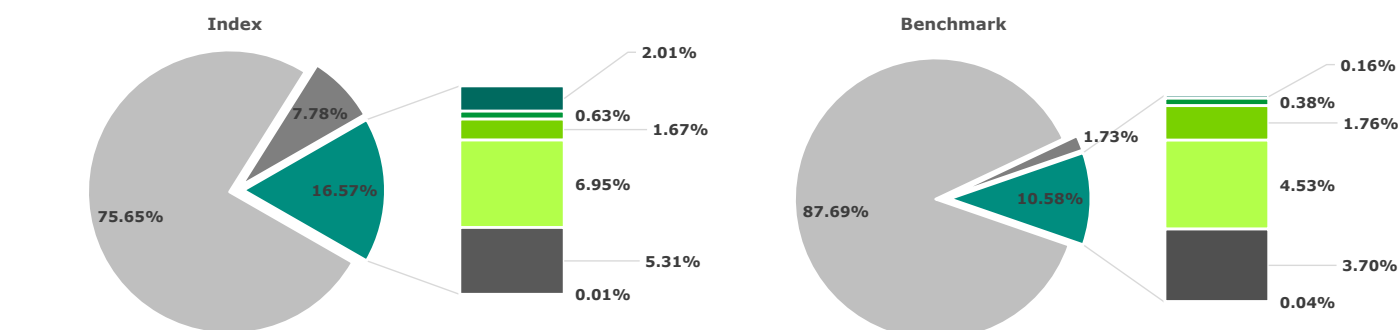
**EURONEXT**  
Indices

Index	Euronext® Vigeo World 120 Index (QS0011250840)
Benchmark	Euronext® World (NL0015000IB0)

## EU Taxonomy Alignment

The EU Taxonomy Alignment report evaluates a portfolio's levels of alignment against the six climate and environmental related objectives set out by the regulatory text, by determining investee companies' involvement in Taxonomy eligible economic activities, quantifying the respective revenues from these activities, and subsequently applying the three technical assessment steps of Substantial Contribution, Do No Significant Harm, and Minimum Social Safeguards. Currently, only the first two objectives are covered: Climate Change Mitigation and Climate Change Adaptation.

### All Objectives EU Taxonomy Alignment



Activity Type	Eligible Revenue	Not Eligible Revenue	Aligned Revenue	Aligned Revenue (Y-1)	Likely Aligned Revenue	Potentially Aligned Revenue	Likely Not Aligned Revenue	Not Aligned Revenue	Alignment Not Collected
---------------	------------------	----------------------	-----------------	-----------------------	------------------------	-----------------------------	----------------------------	---------------------	-------------------------

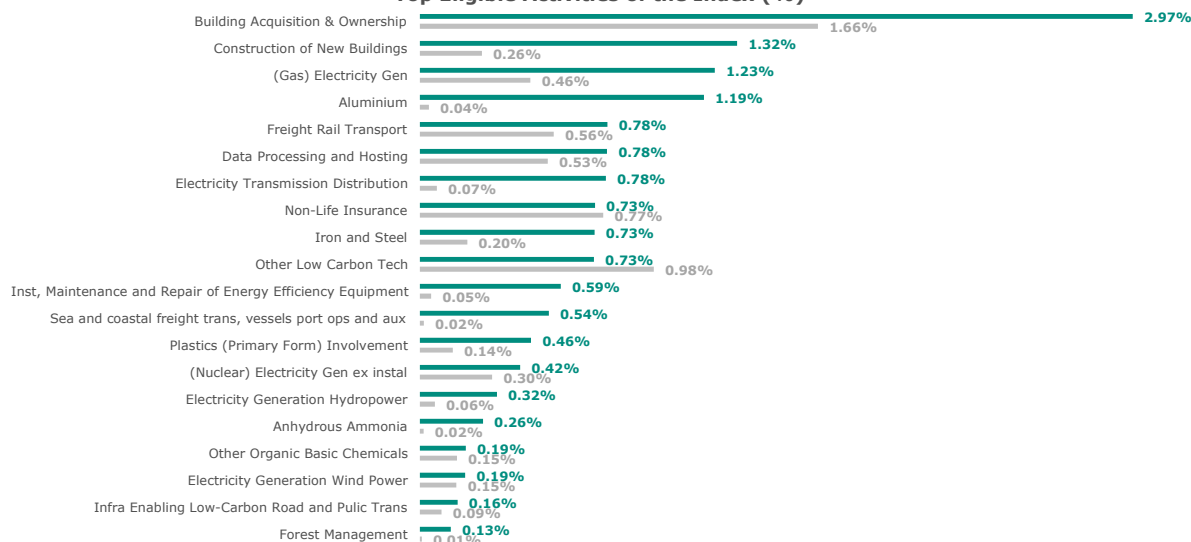
Overall	24.35%	75.65%	2.01%	-	0.63%	1.67%	6.95%	0.01%	5.31%
	12.31%	87.69%	0.16%	-	0.38%	1.76%	4.53%	0.04%	3.70%

• Overall : This factor identifies the percentage value of revenue derived from activities that are eligible under the Taxonomy across all Taxonomy objectives.

### Top constituents of the index by Overall Taxonomy Alignment

Company	Total Eligible Activity Revenue	Total Aligned Revenue	Total Likely Aligned Revenue	Total Potentially Aligned Revenue	Index Weight
EDP	78.00%	63.00%	0.00%	0.00%	1.02%
ENEL	69.00%	39.90%	0.00%	0.00%	1.09%
EDF	33.00%	32.00%	0.00%	0.00%	1.01%
NORSK HYDRO	50.00%	28.33%	0.00%	0.00%	1.03%
ENDESA	73.80%	27.20%	0.00%	0.00%	1.08%
GPT GROUP/THE	94.37%	0.00%	18.87%	37.75%	0.77%
WSP GLOBAL	77.04%	0.00%	15.41%	0.00%	0.72%
DEXUS PROPERTY GROUP	89.13%	0.00%	14.91%	22.02%	0.97%
STOCKLAND	93.88%	0.00%	9.39%	0.00%	0.91%
AGL ENERGY LTD	12.71%	0.00%	8.05%	0.21%	0.74%

### Top Eligible Activities of the Index (%)



This publication is for information purposes only and is not a recommendation to engage in investment activities. This publication is provided "as is" without representation or warranty of any kind. Whilst all reasonable care has been taken to ensure the accuracy of the content, Euronext does not guarantee its accuracy or completeness. Euronext will not be held liable for any loss or damages of any nature ensuing from using, trusting or acting on information provided. All proprietary rights and interest in or connected with this publication shall vest in Euronext. No part of it may be redistributed or reproduced in any form without the prior written permission of Euronext. Euronext refers to Euronext N.V. and its affiliates. Information regarding trademarks and intellectual property rights of Euronext is located at <https://www.euronext.com/terms-use>.