



Passenger numbers per week

## Preliminary figures

- The figures for the previous week are preliminary. It takes some time for all passenger numbers to be reported, so the figures for the previous week may be lower than the final figures.
- The figures are from SIA, Avinor's traffic database.

# Content

- Top 10 airports
- Avinor total
- Selected airports
- The 4 biggest airports
- Regional and local airports
  - Regional airports
  - Local airports in Trøndelag and Nordland
  - Local airports on the west coast of Norway and in Troms and Finnmark

# Top 10 airports, total, week 23

Airport	2019	2024	2025	2026	2026 vs. 2025	
					Change	Change %
Oslo	629 051	580 781	600 795	579 970	-20 825	-3 %
Bergen	144 405	140 396	139 778	155 650	15 872	11 %
Trondheim	101 349	97 352	99 150	96 420	-2 730	-3 %
Stavanger	90 884	86 539	86 413	84 493	-1 920	-2 %
Tromsø	44 783	45 099	50 998	48 948	-2 050	-4 %
Bodø	39 003	42 531	44 776	46 416	1 640	4 %
Ålesund	26 122	22 201	23 039	24 703	1 664	7 %
Harstad/Narvik	16 229	19 017	20 483	21 990	1 507	7 %
Kristiansand	24 732	19 290	19 522	18 824	-698	-4 %
Alta	8 383	8 002	8 700	8 604	-96	-1 %

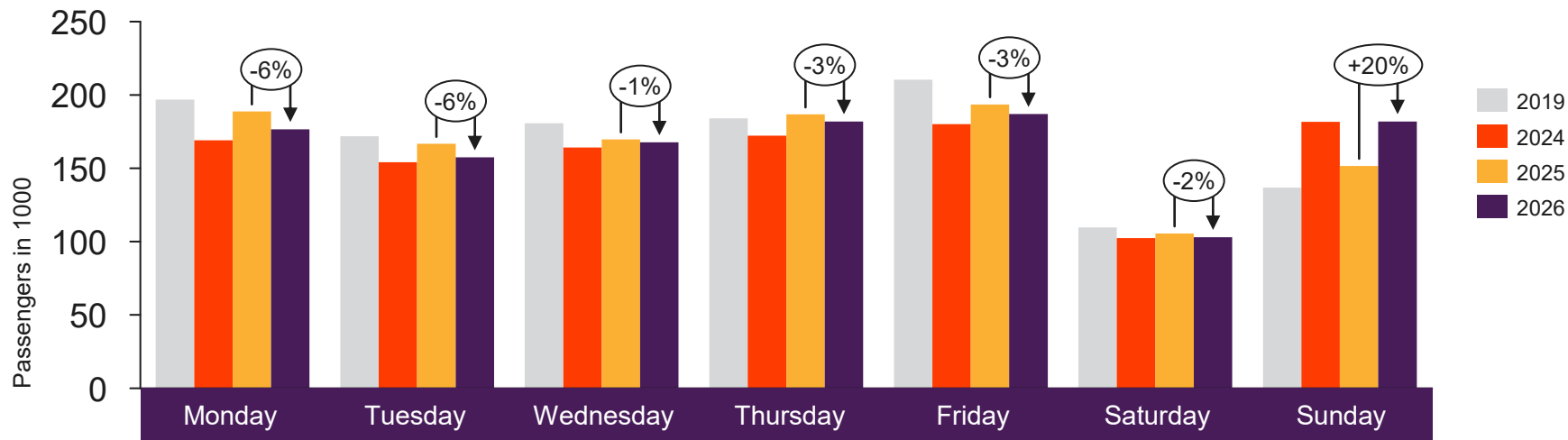


[Return to content  
page](#)

# Avinor total

Passenger numbers for all Avinor airports

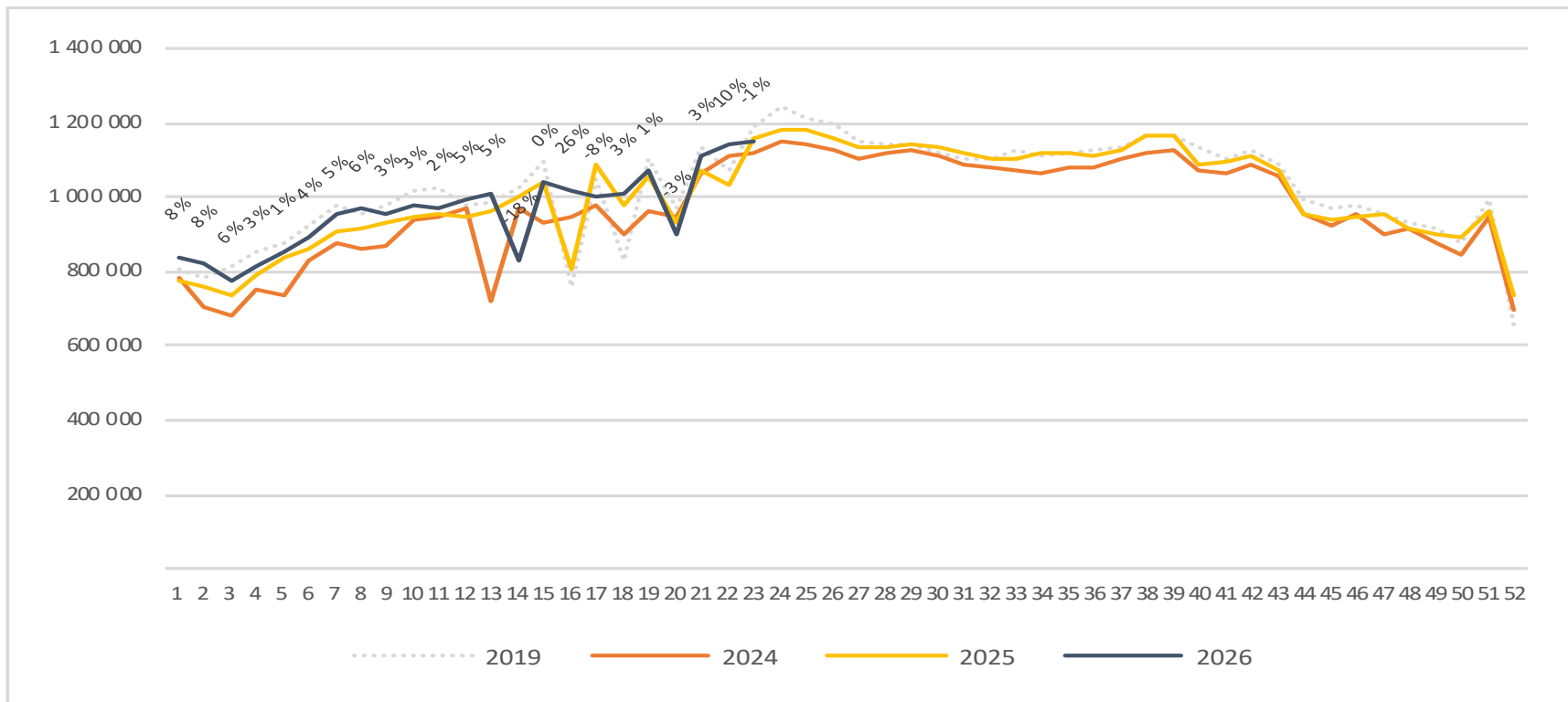
# Passengers Avinor total per day week 23



2019	196 931	171 772	180 698	184 136	210 446	109 632	136 830
2024	169 037	154 175	164 128	172 193	180 112	102 339	181 689
2025	188 755	166 683	169 684	186 770	193 572	105 504	151 635
2026	176 569	157 415	167 645	181 928	186 978	103 061	181 865

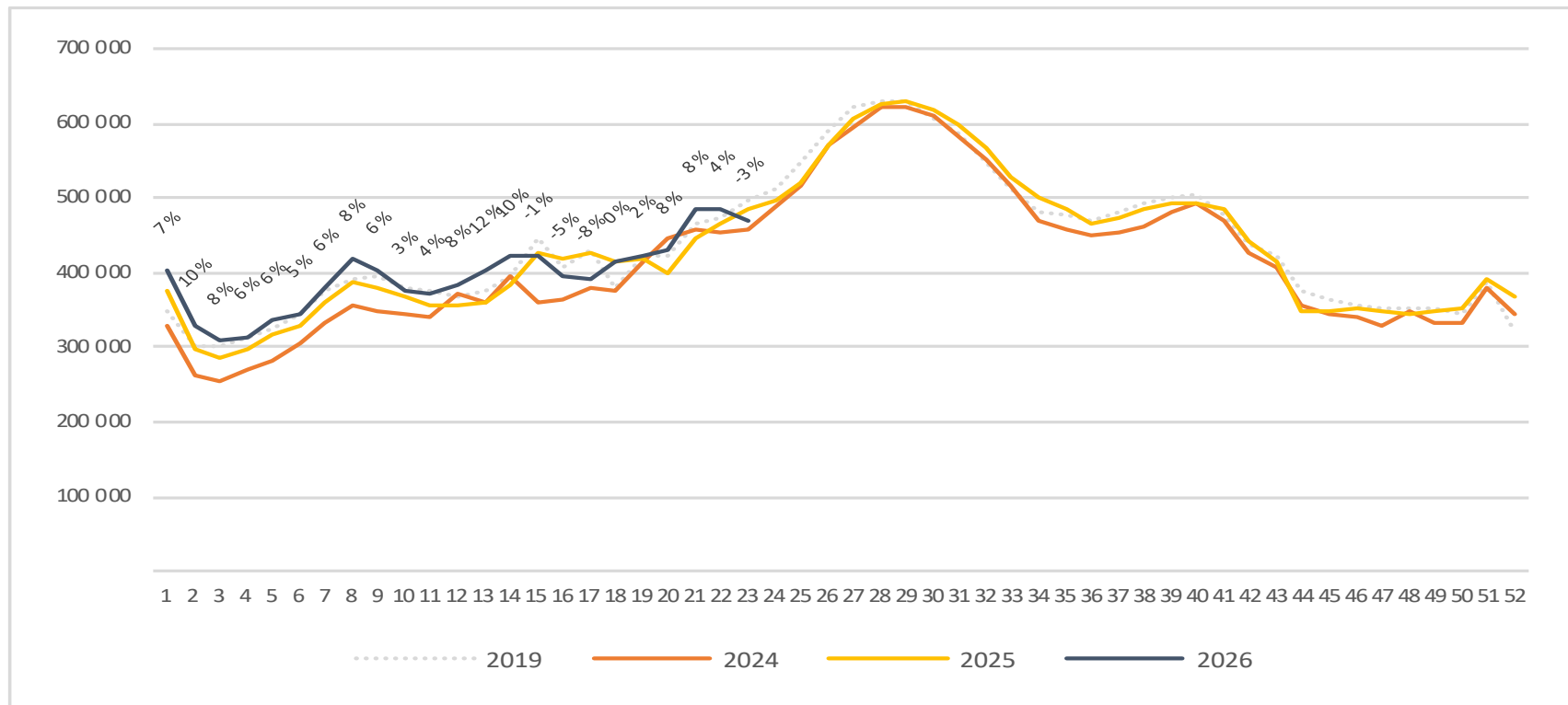
# Passengers Avinor total per week

The change is measured against the same week last year



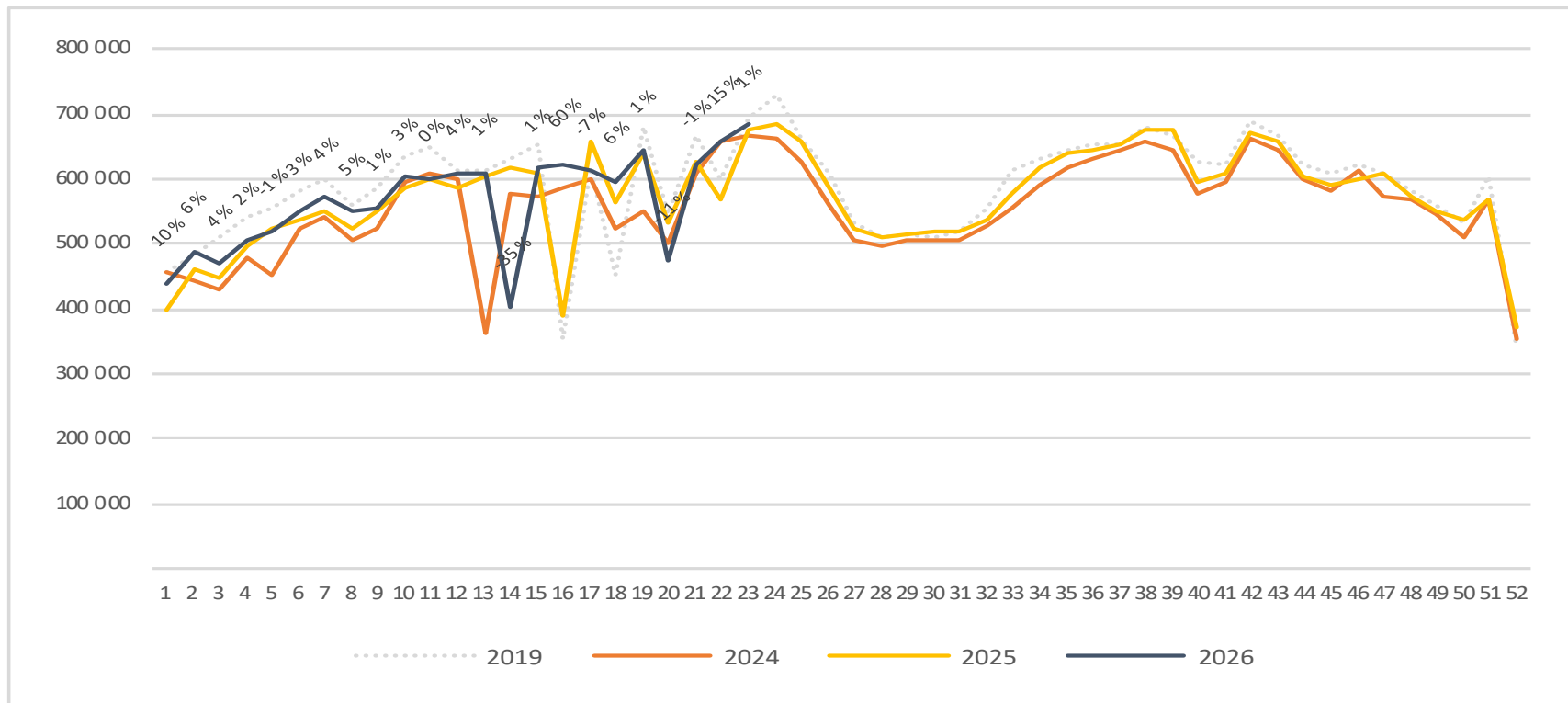
# Passengers Avinor international per week

The change is measured against the same week last year



# Passengers Avinor domestic per week

The change is measured against the same week last year

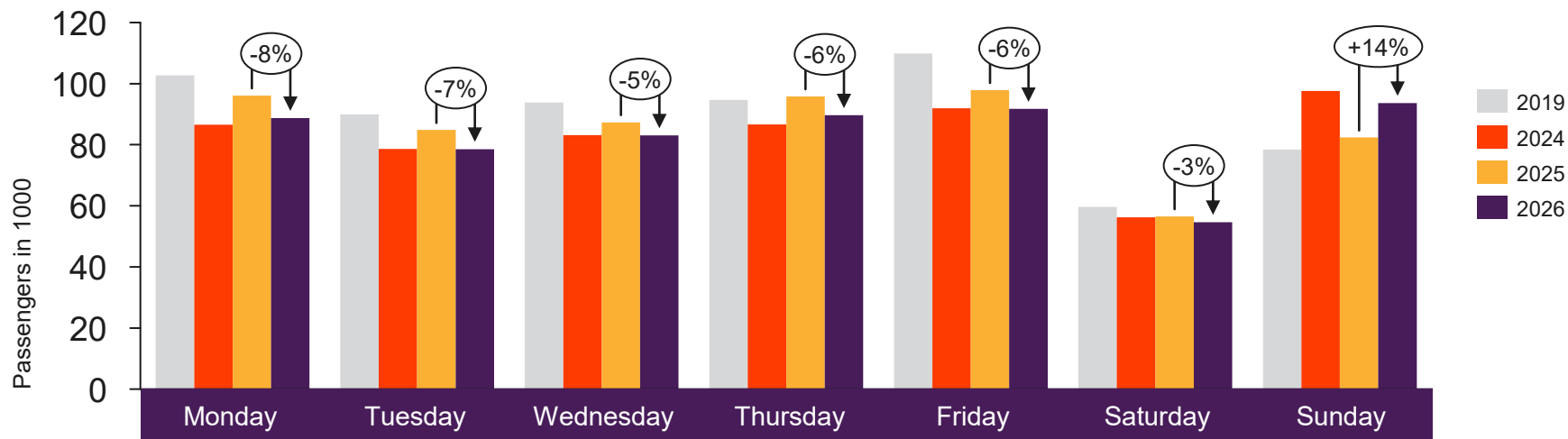




[Return to content page](#)

# Selected airports

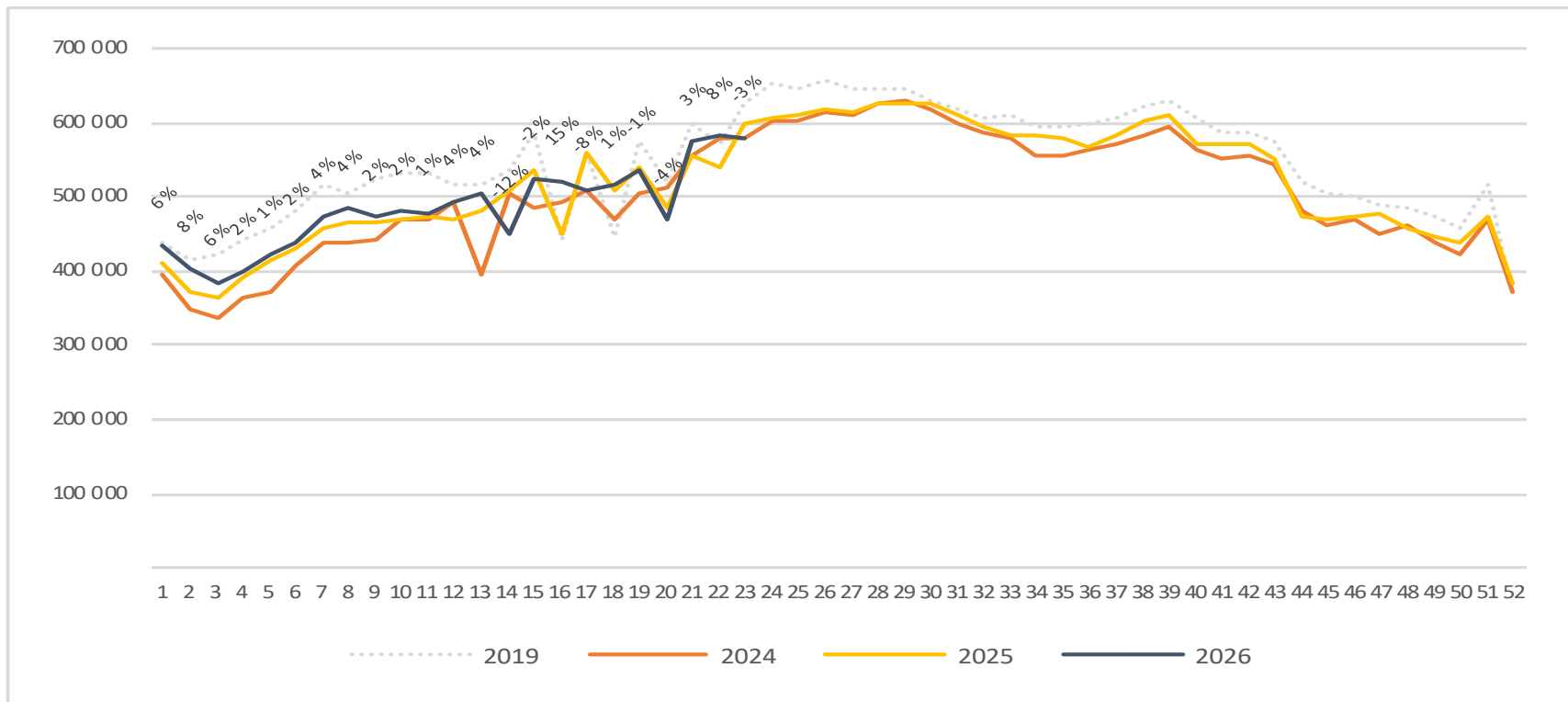
# Passengers OSL total per day week 23



	Monday	Tuesday	Wednesday	Thursday	Friday	Saturday	Sunday
2019	102 660	89 944	93 851	94 710	109 853	59 648	78 385
2024	86 573	78 593	83 114	86 678	91 950	56 259	97 614
2025	96 056	84 828	87 302	95 835	97 885	56 515	82 374
2026	88 745	78 556	83 056	89 645	91 703	54 658	93 607

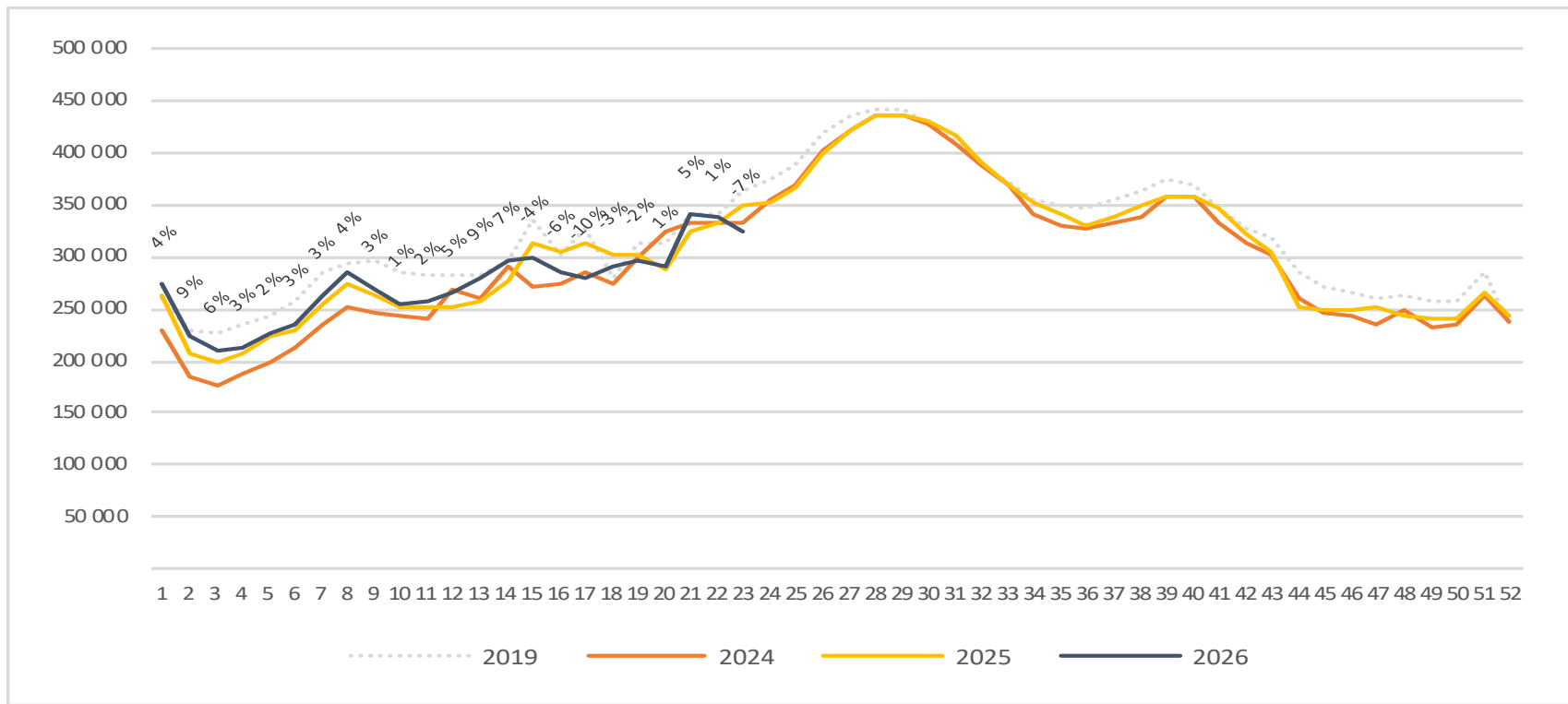
# Passengers OSL total per week

The change is measured against the same week last year



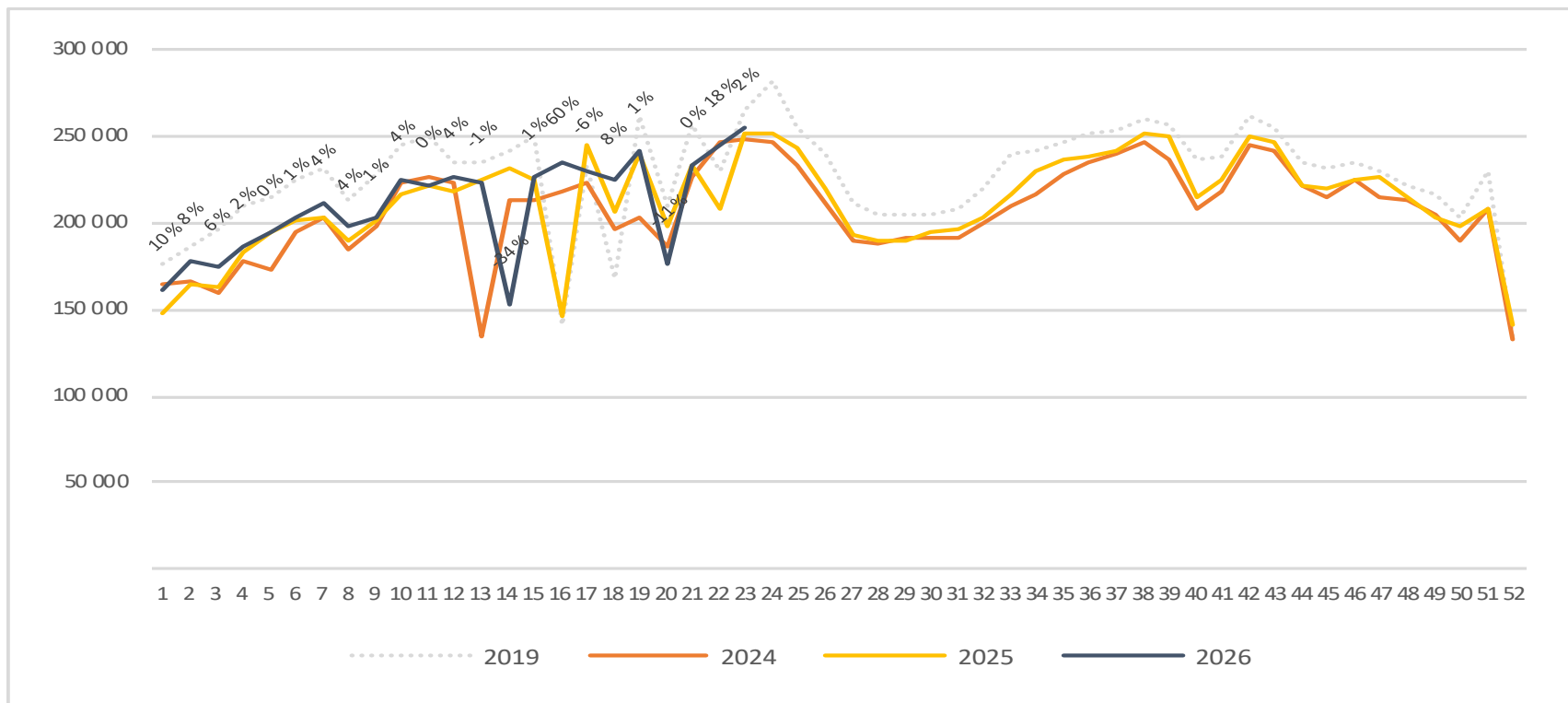
# Passengers OSL international per week

The change is measured against the same week last year

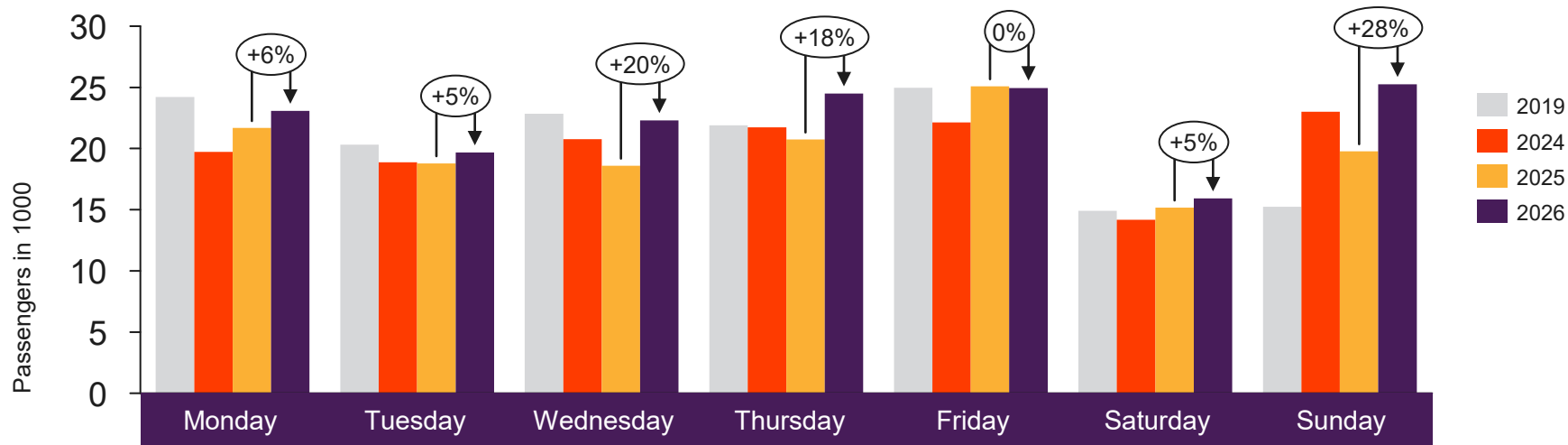


# Passengers OSL domestic per week

The change is measured against the same week last year



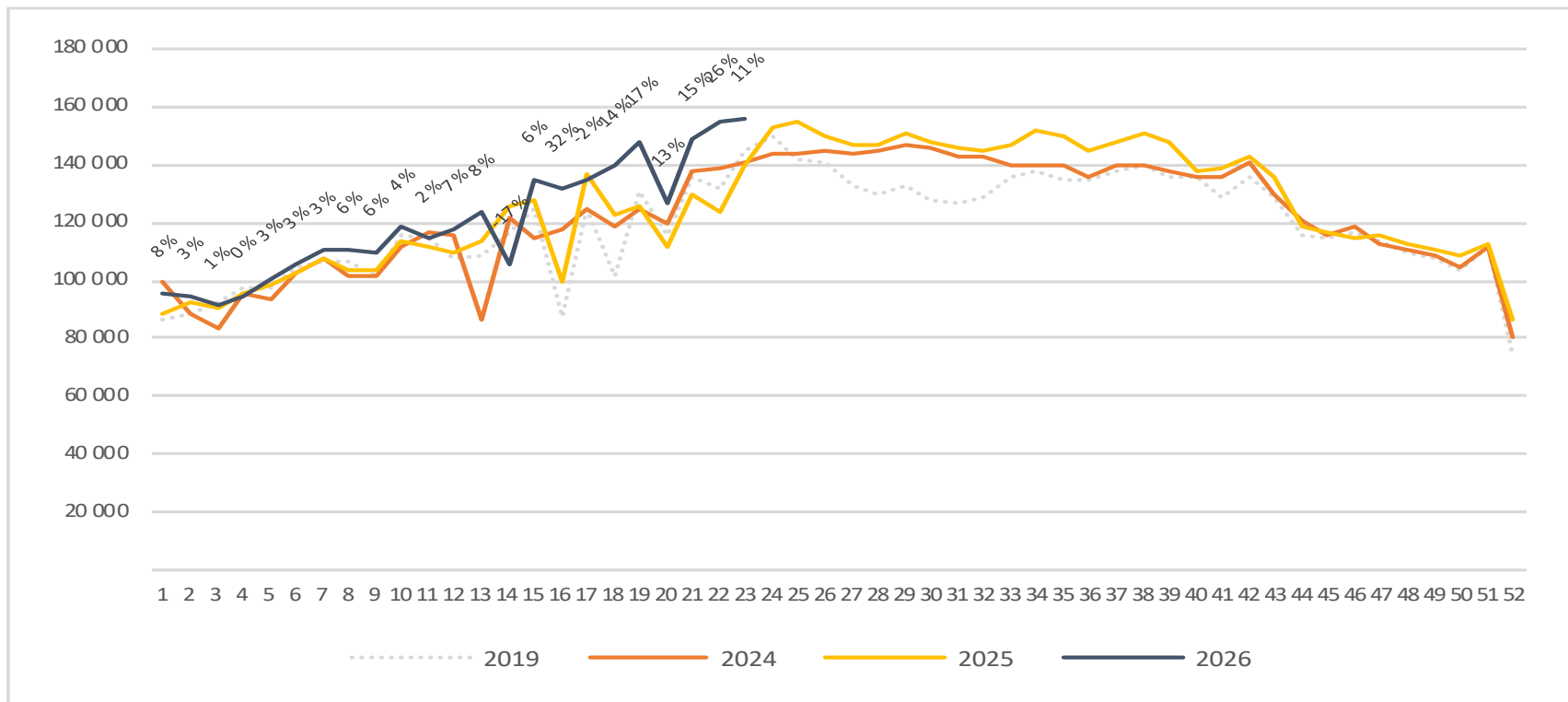
# Passengers BGO total per day week 23



2019	24 201	20 327	22 852	21 902	24 963	14 921	15 239
2024	19 736	18 874	20 754	21 731	22 132	14 166	23 003
2025	21 674	18 784	18 583	20 730	25 076	15 165	19 766
2026	23 075	19 675	22 293	24 482	24 954	15 914	25 257

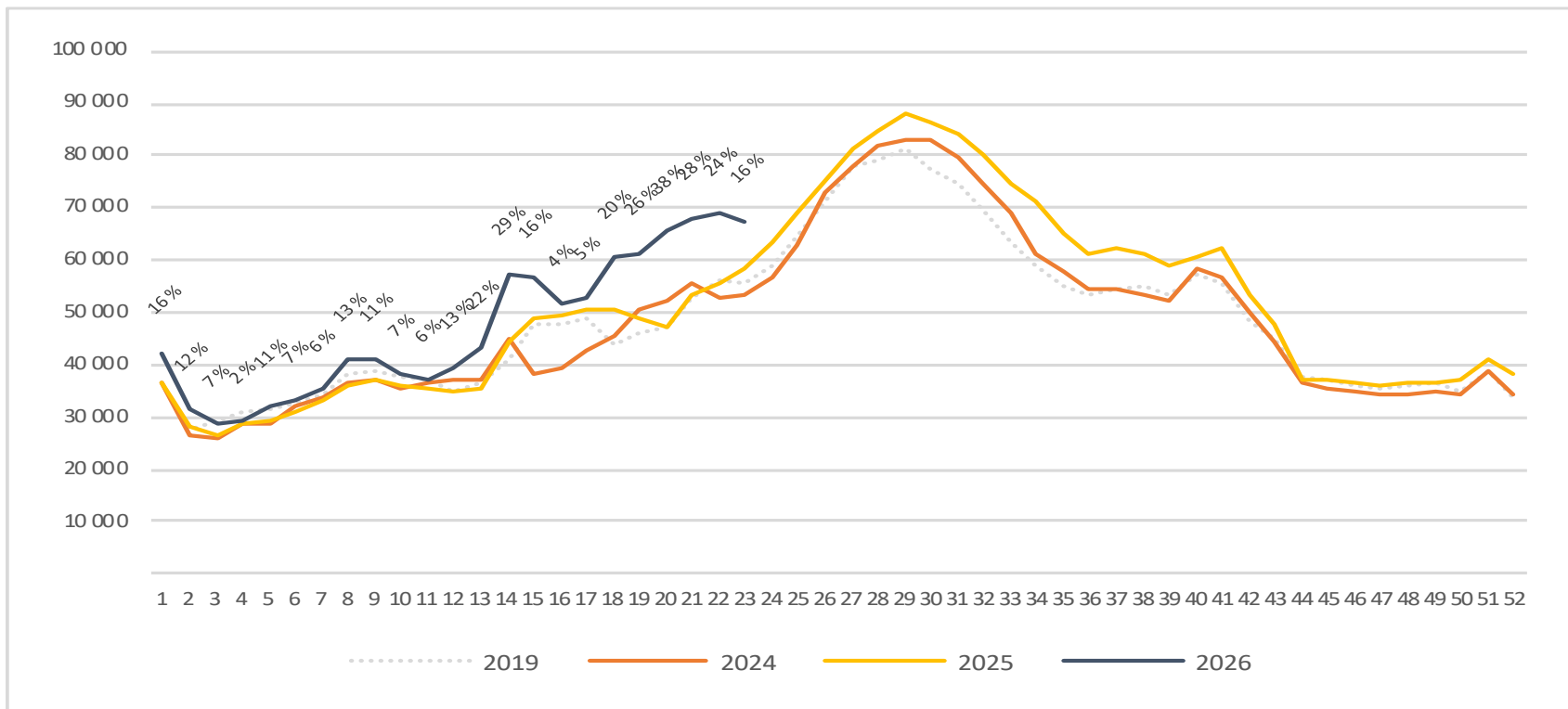
# Passengers BGO total per week

The change is measured against the same week last year



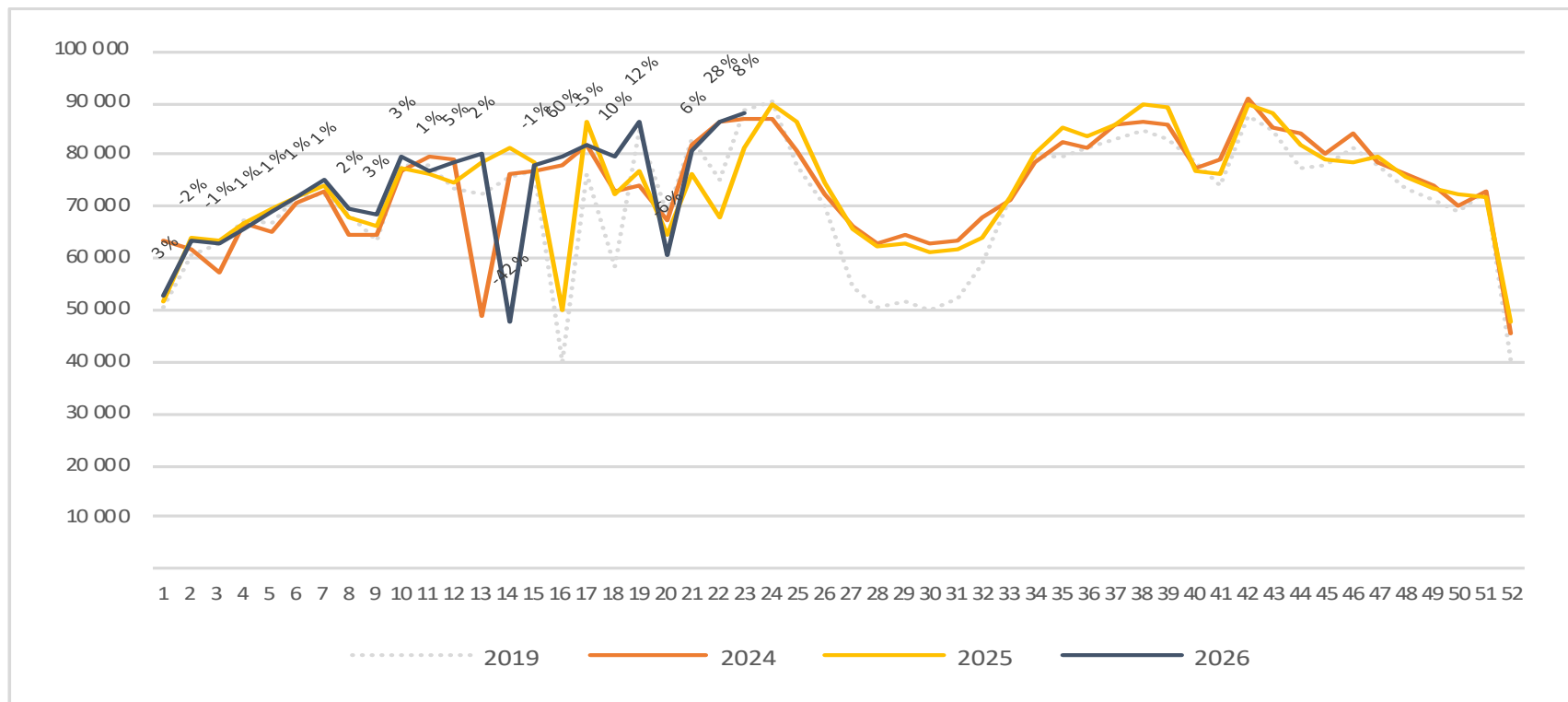
# Passengers BGO international per week

The change is measured against the same week last year

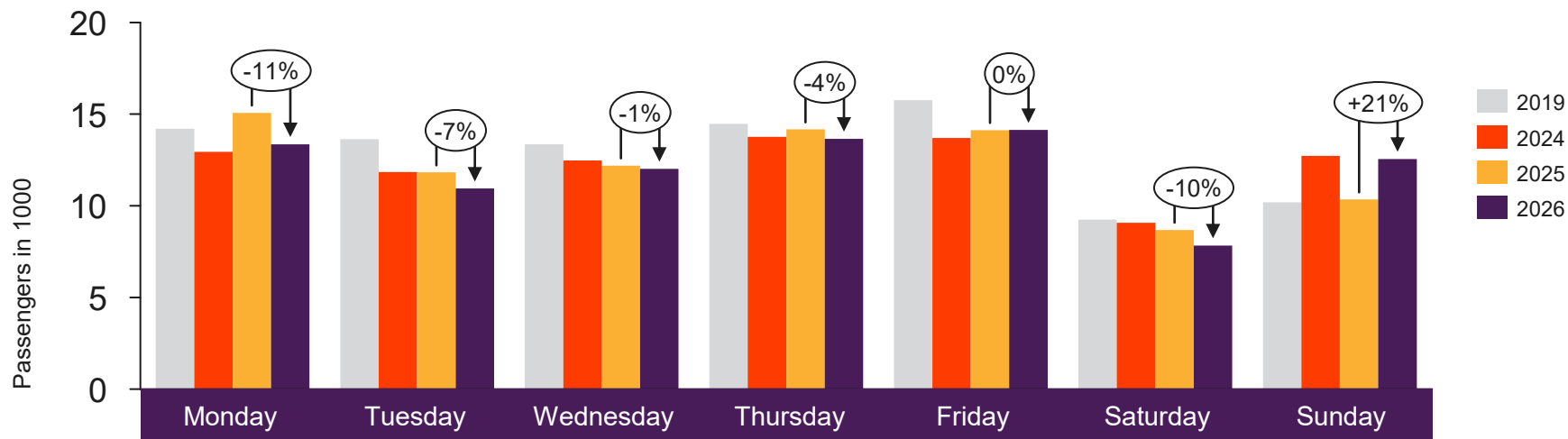


# Passengers BGO domestic per week

The change is measured against the same week last year



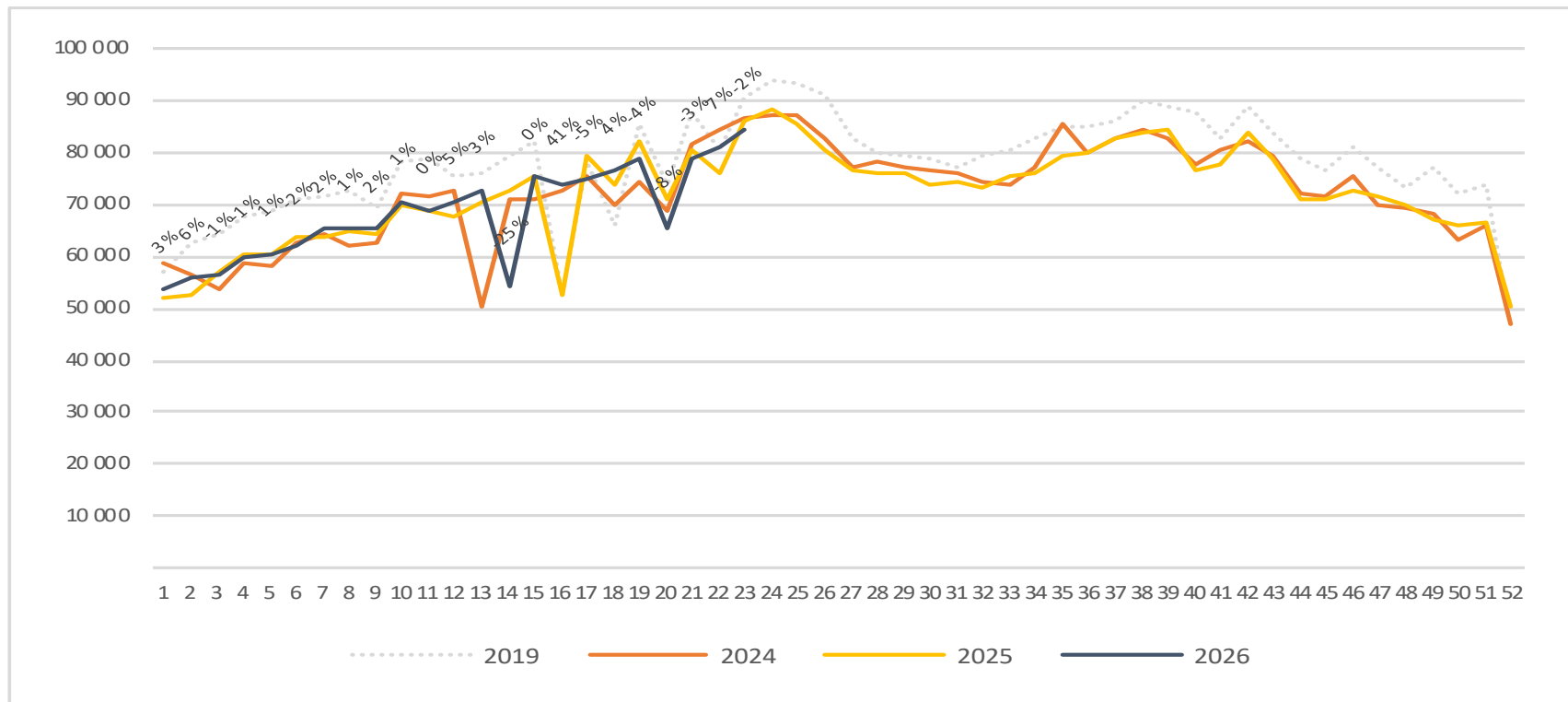
# Passengers SVG total per day week 23



	Monday	Tuesday	Wednesday	Thursday	Friday	Saturday	Sunday
2019	14 207	13 644	13 357	14 474	15 766	9 251	10 185
2024	12 942	11 848	12 474	13 768	13 699	9 079	12 729
2025	15 076	11 821	12 194	14 172	14 127	8 681	10 342
2026	13 353	10 942	12 016	13 651	14 134	7 838	12 559

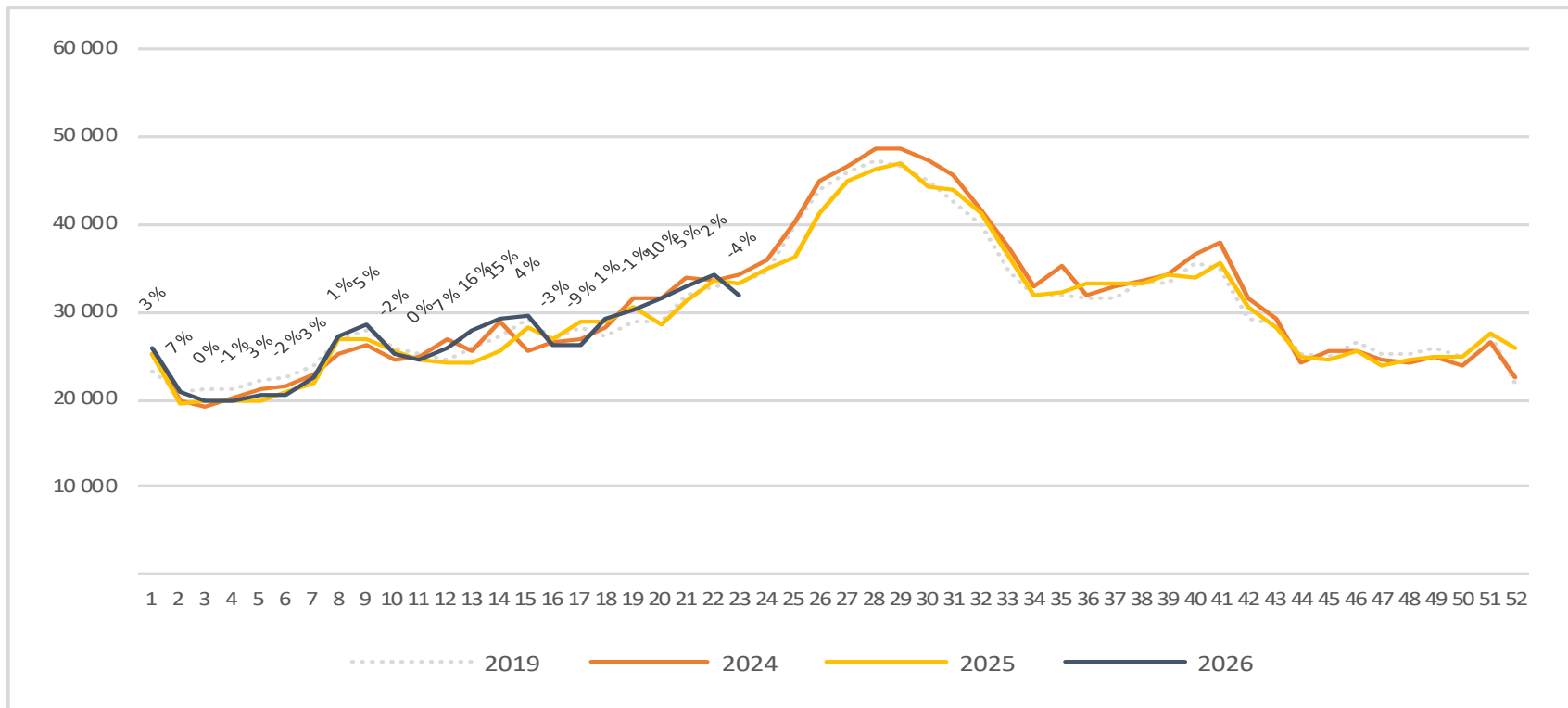
# Passengers SVG total per week

The change is measured against the same week last year



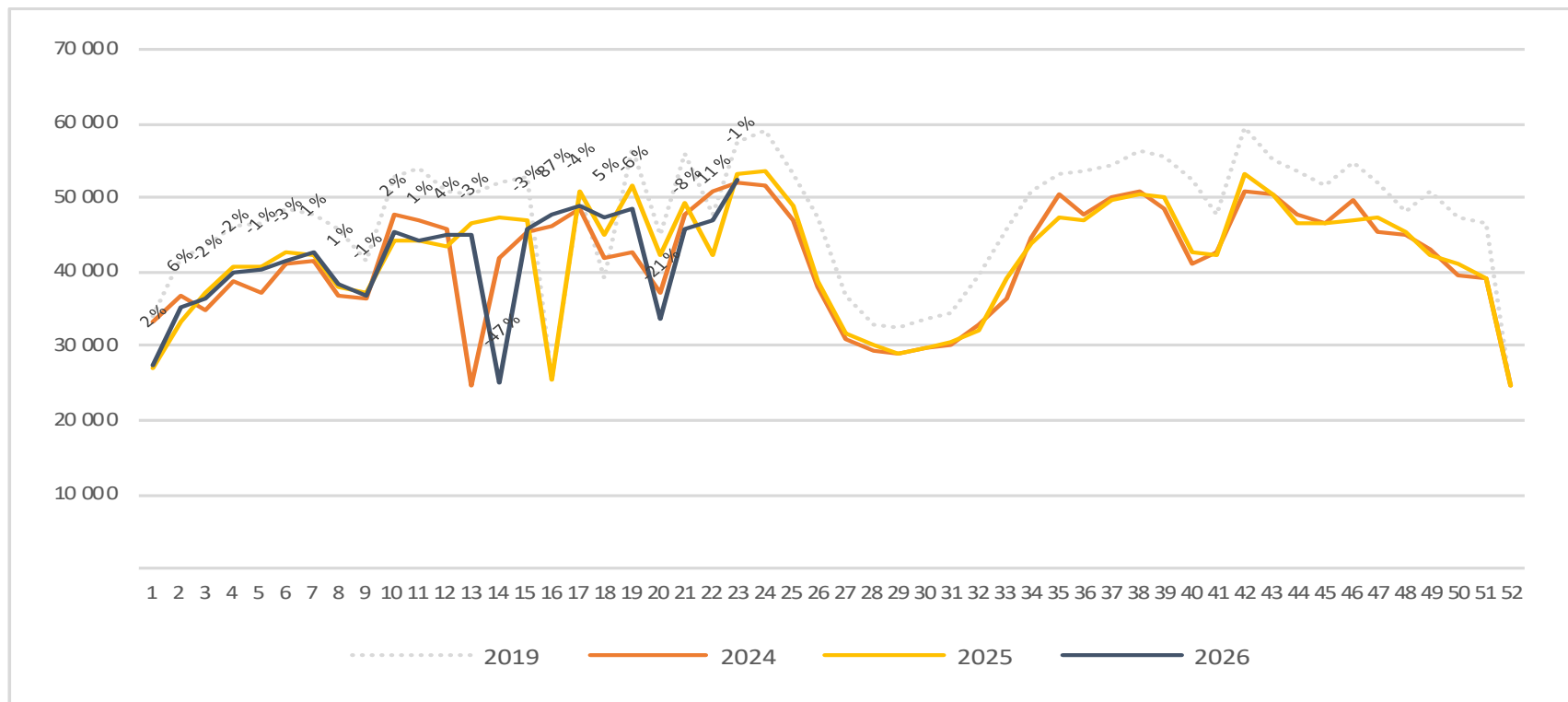
# Passengers SVG international per week

The change is measured against the same week last year

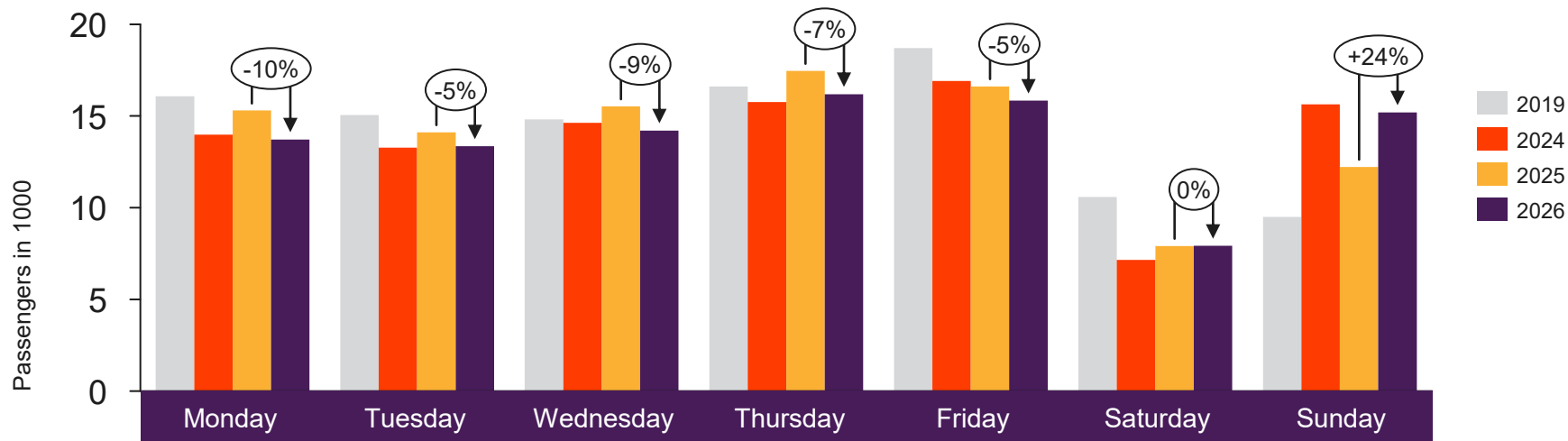


# Passengers SVG domestic per week

The change is measured against the same week last year



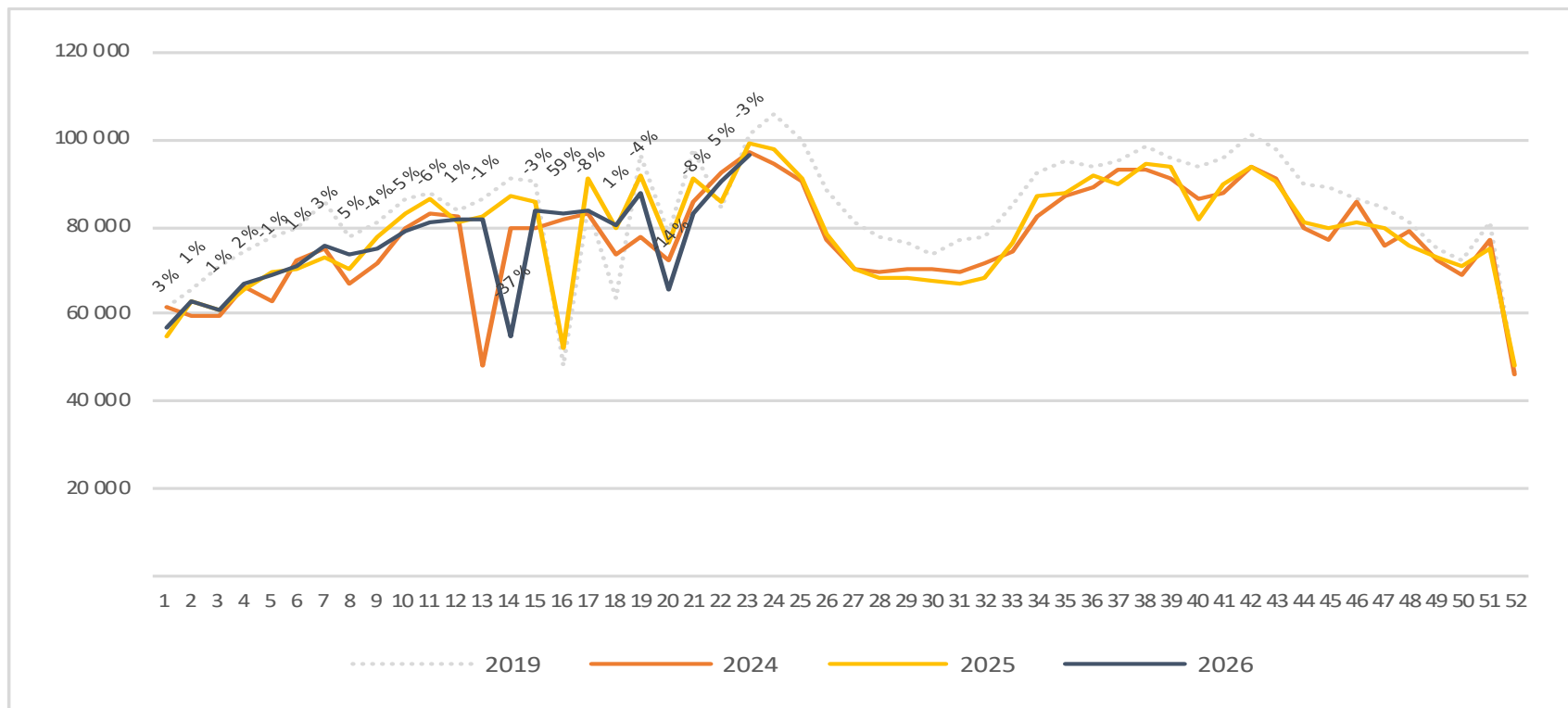
# Passengers TRD total per day week 23



	Monday	Tuesday	Wednesday	Thursday	Friday	Saturday	Sunday
2019	16 070	15 054	14 815	16 608	18 710	10 590	9 502
2024	13 979	13 271	14 623	15 770	16 908	7 161	15 640
2025	15 300	14 110	15 525	17 460	16 616	7 917	12 222
2026	13 720	13 351	14 205	16 189	15 839	7 926	15 190

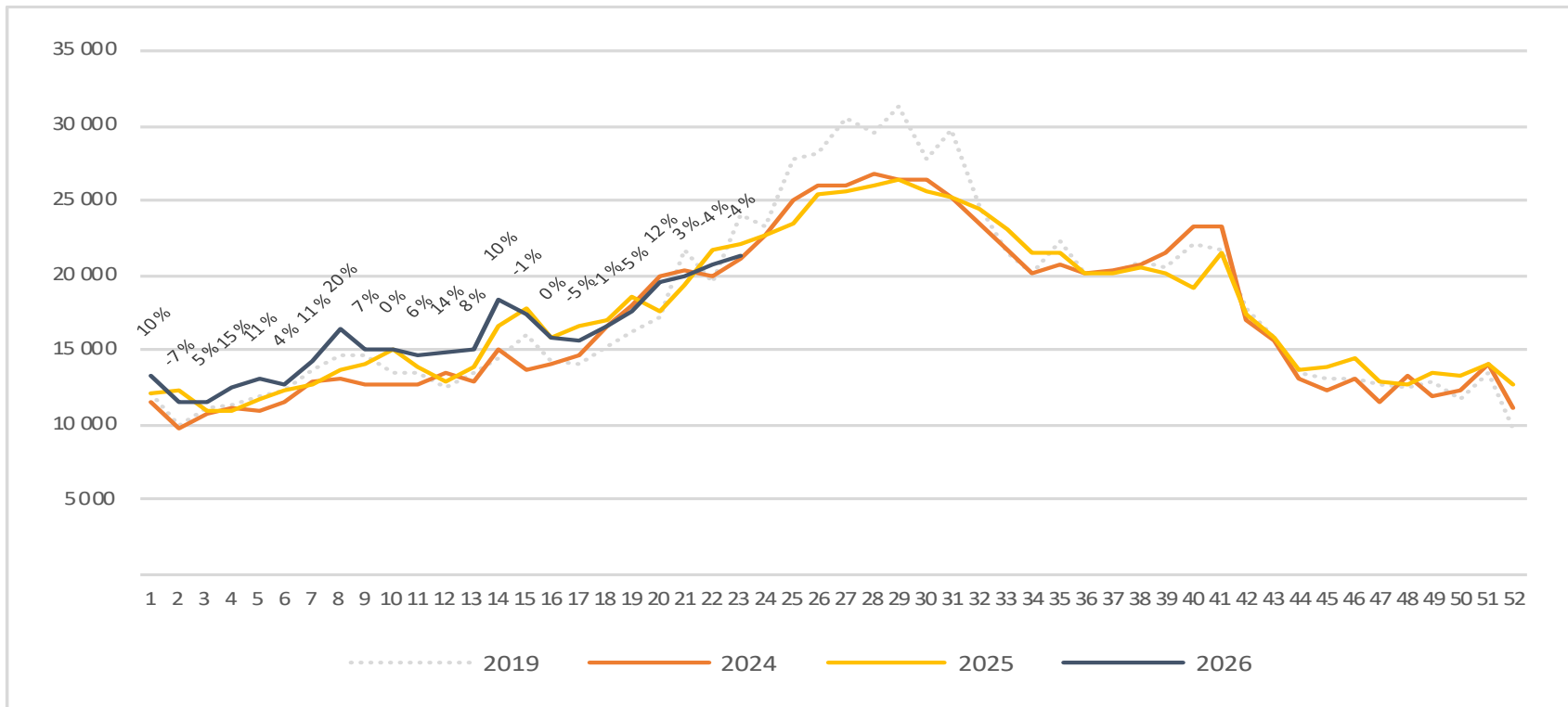
# Passengers TRD total per week

The change is measured against the same week last year



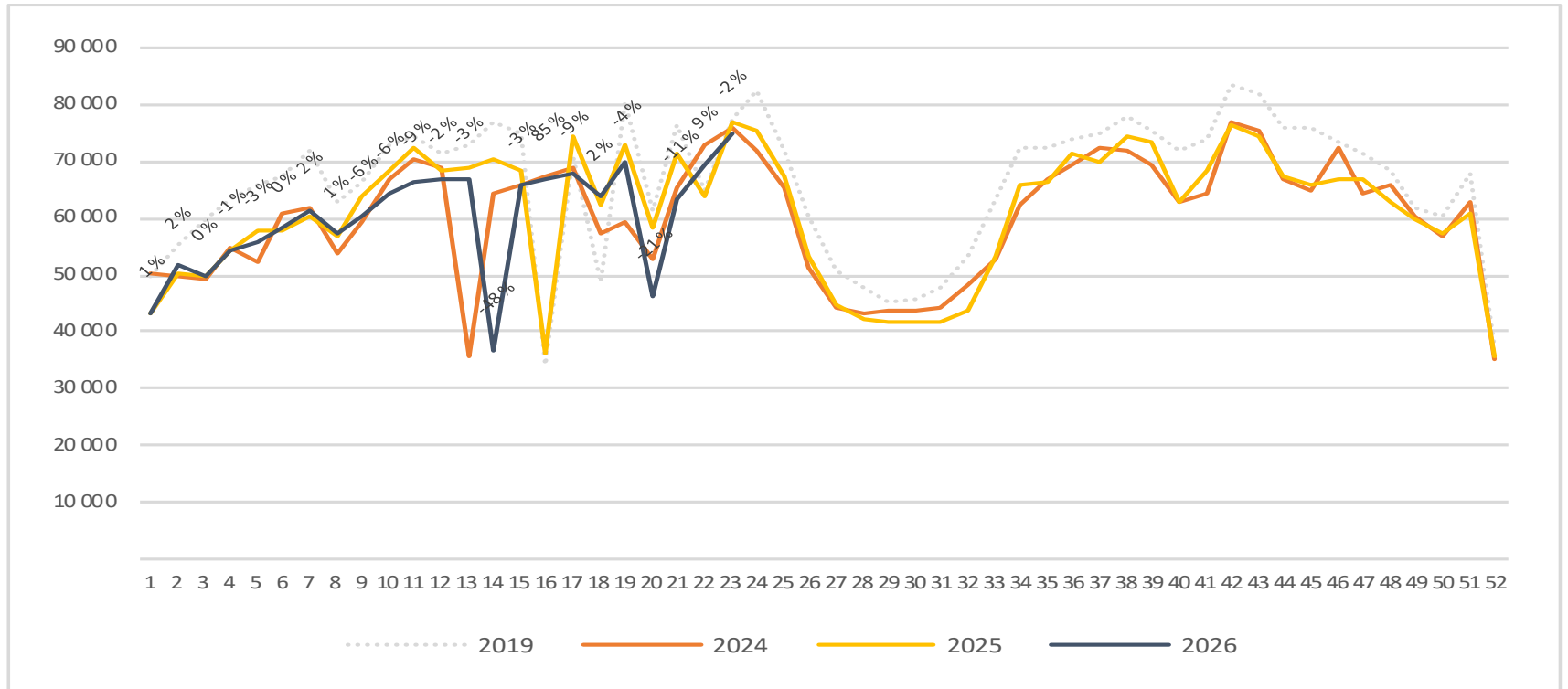
# Passengers TRD international per week

The change is measured against the same week last year

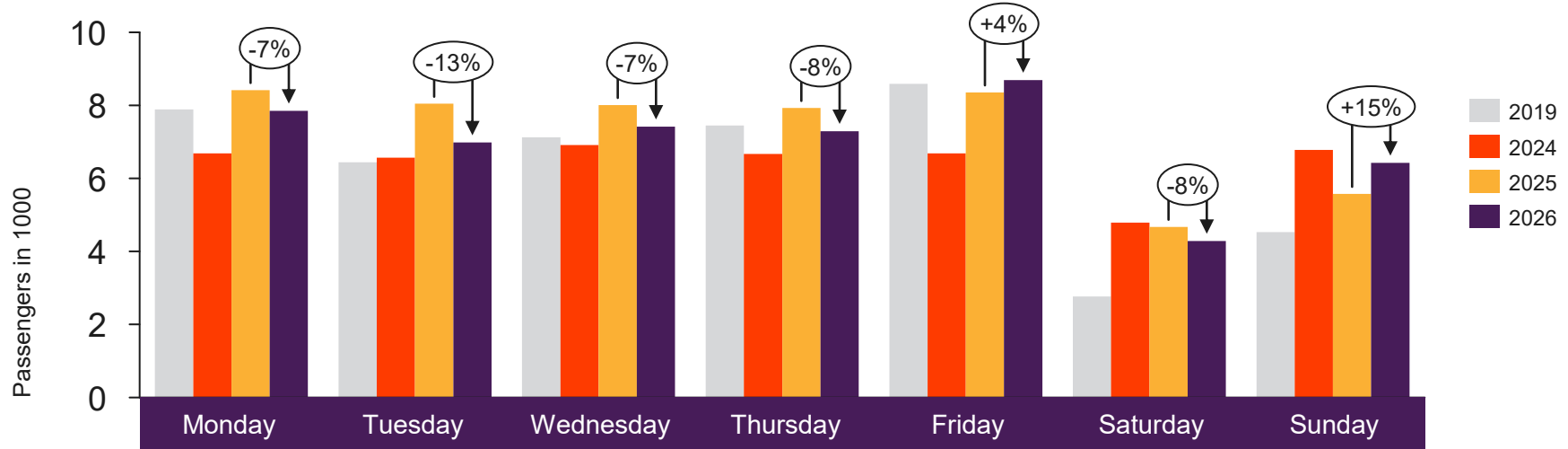


# Passengers TRD domestic per week

The change is measured against the same week last year



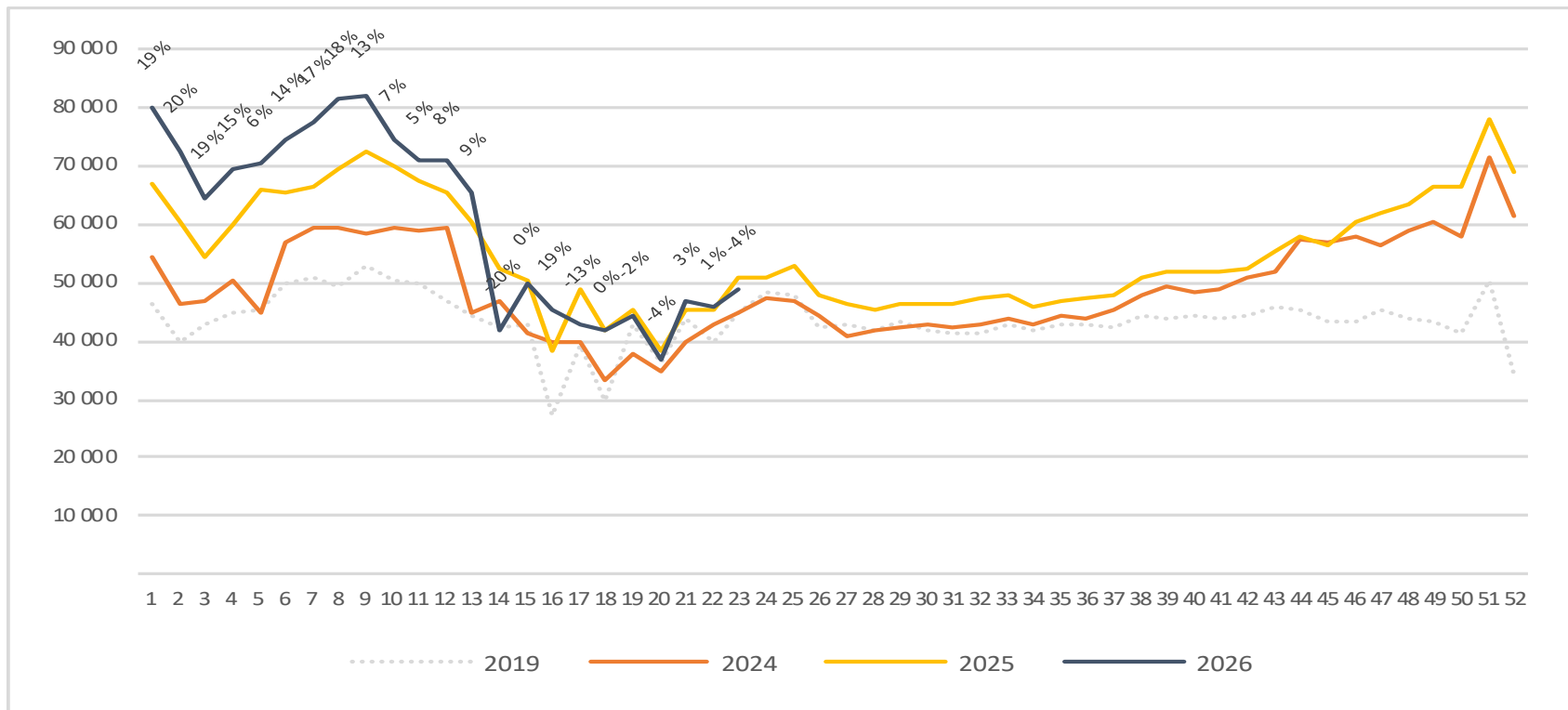
# Passengers TOS total per day week 23



	Monday	Tuesday	Wednesday	Thursday	Friday	Saturday	Sunday
2019	7 889	6 439	7 122	7 450	8 587	2 765	4 531
2024	6 689	6 567	6 915	6 666	6 688	4 792	6 782
2025	8 414	8 044	8 005	7 930	8 354	4 674	5 577
2026	7 849	6 981	7 416	7 291	8 693	4 289	6 429

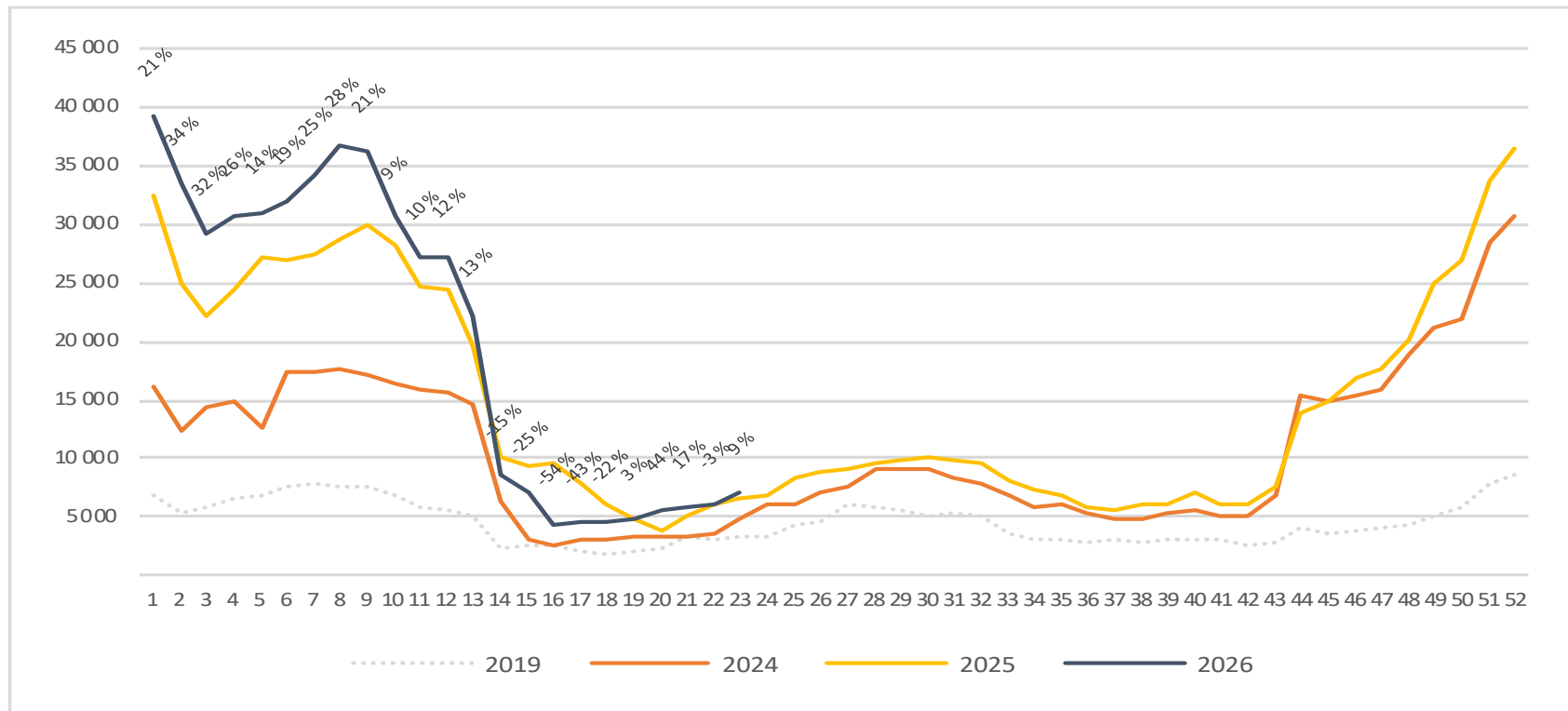
# Passengers TOS total per week

The change is measured against the same week last year



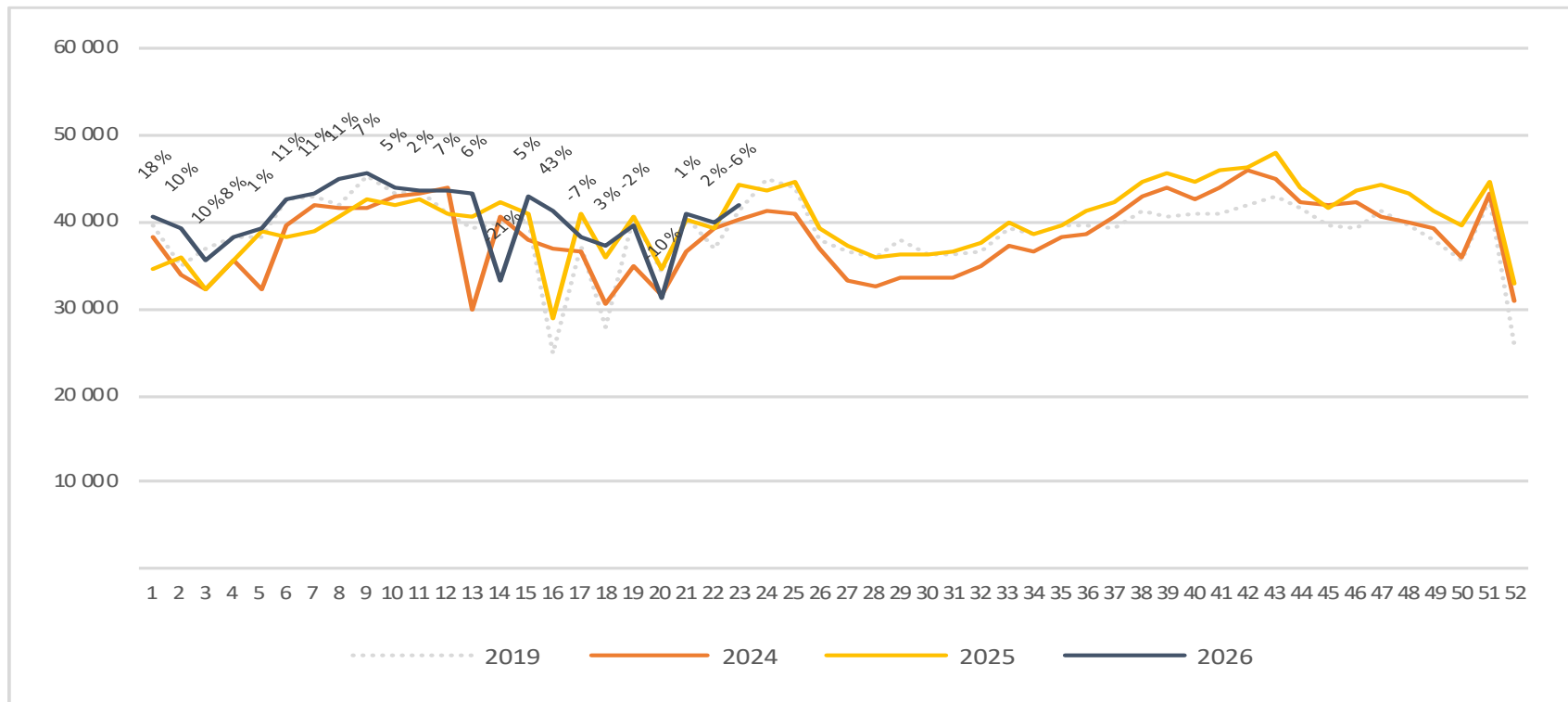
# Passengers TOS international per week

The change is measured against the same week last year



# Passengers TOS domestic per week

The change is measured against the same week last year



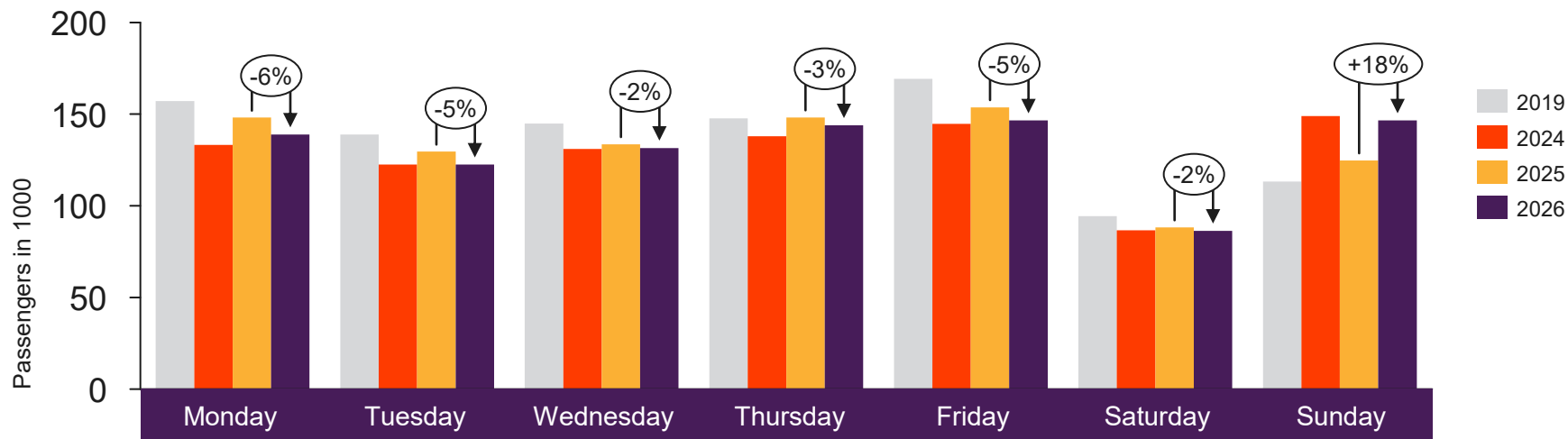


[Return to content  
page](#)

# Top 4 airports

Total passenger numbers from Oslo, Bergen, Stavanger and Trondheim

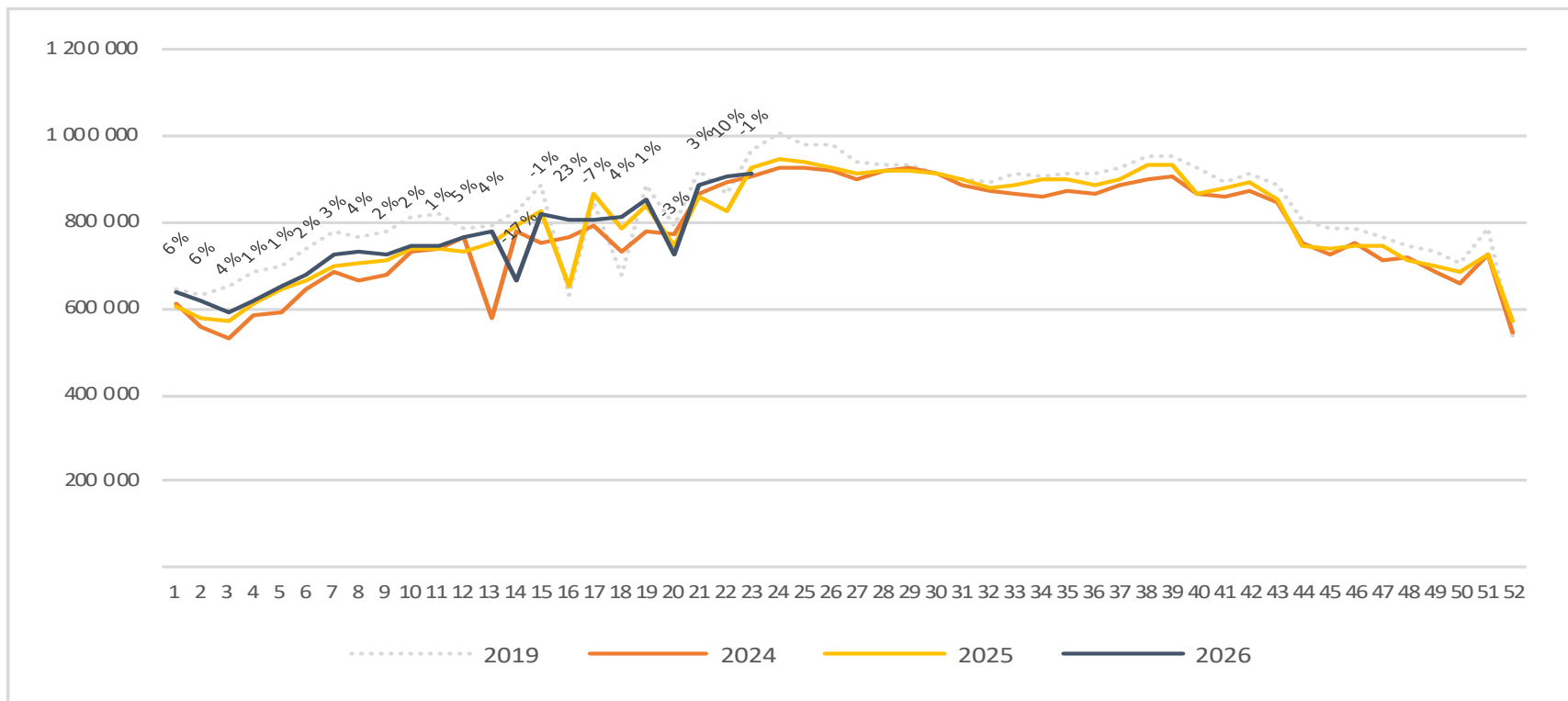
# Passengers top 4 airports total per day week 23



	Monday	Tuesday	Wednesday	Thursday	Friday	Saturday	Sunday
2019	157 138	138 969	144 875	147 694	169 292	94 410	113 311
2024	133 230	122 586	130 965	137 947	144 689	86 665	148 986
2025	148 106	129 543	133 604	148 197	153 704	88 278	124 704
2026	138 893	122 524	131 570	143 967	146 630	86 336	146 613

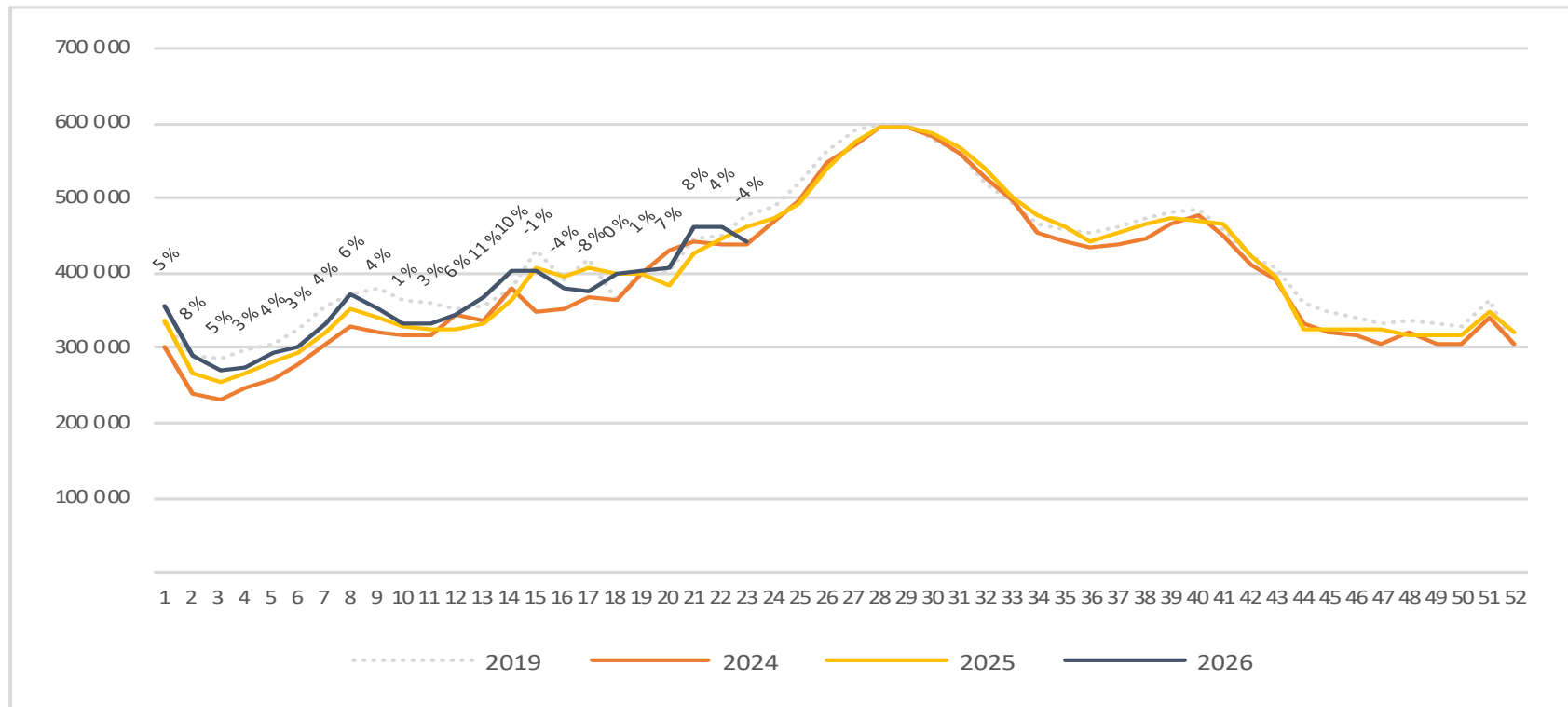
# Passengers top 4 airports total per week

The change is measured against the same week last year



# Passengers top 4 airports international per week

The change is measured against the same week last year





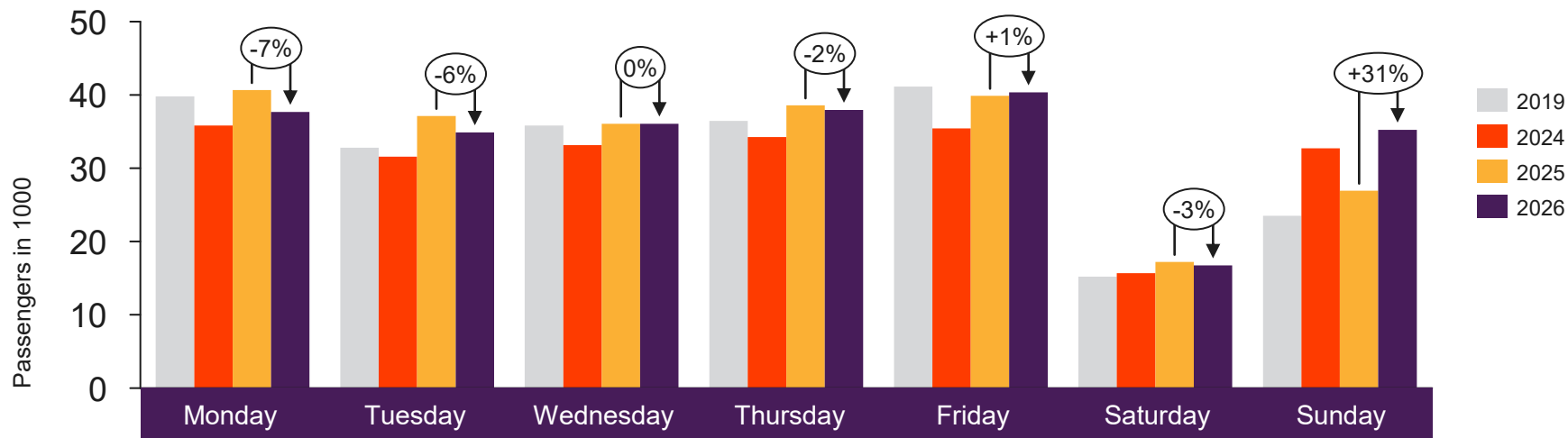


[Return to content page](#)

# Regional and local airports

Total passenger numbers from Alta, Andenes, Bardufoss, Berlevåg, Bodø, Brønnøysund, Båtsfjord, Florø, Førde, Hammerfest, Harstad/Narvik, Hasvik, Honningsvåg, Kirkenes, Kristiansand, Kristiansund, Lakselv, Leknes, Mehamn, Mo i Rana, Molde, Mosjøen, Namsos, Røros, Rørvik, Røst, Sandane, Sandnessjøen, Sogndal, Stokmarknes, Svalbard, Svolvær, Sørkjosen, Tromsø, Vadsø, Vardø, Værøy, Ørsta-Volda and Ålesund

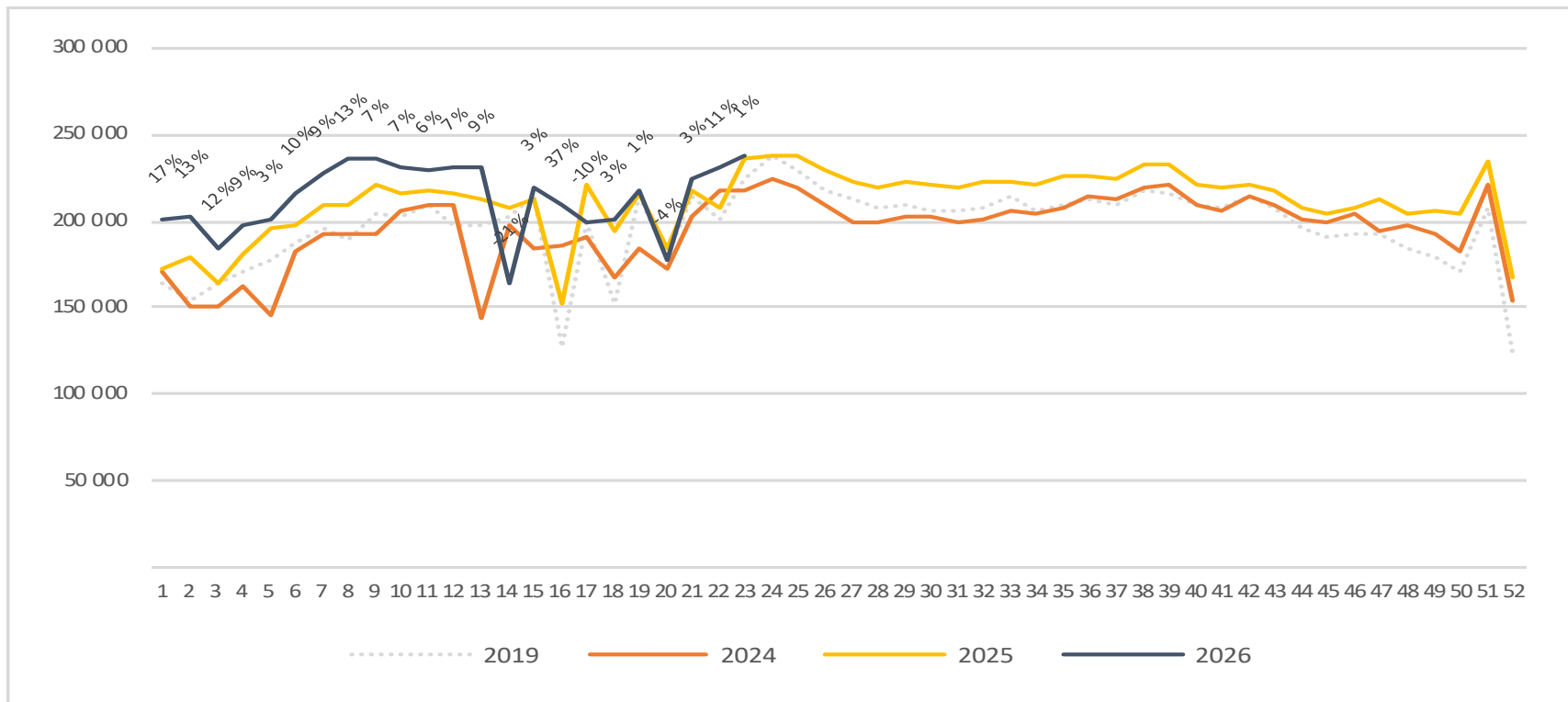
# Passengers Regional and local airports total per day week 23



	Monday	Tuesday	Wednesday	Thursday	Friday	Saturday	Sunday
2019	39 793	32 803	35 823	36 442	41 154	15 222	23 519
2024	35 807	31 589	33 163	34 246	35 423	15 674	32 703
2025	40 649	37 140	36 080	38 573	39 868	17 226	26 931
2026	37 676	34 891	36 075	37 961	40 348	16 725	35 252

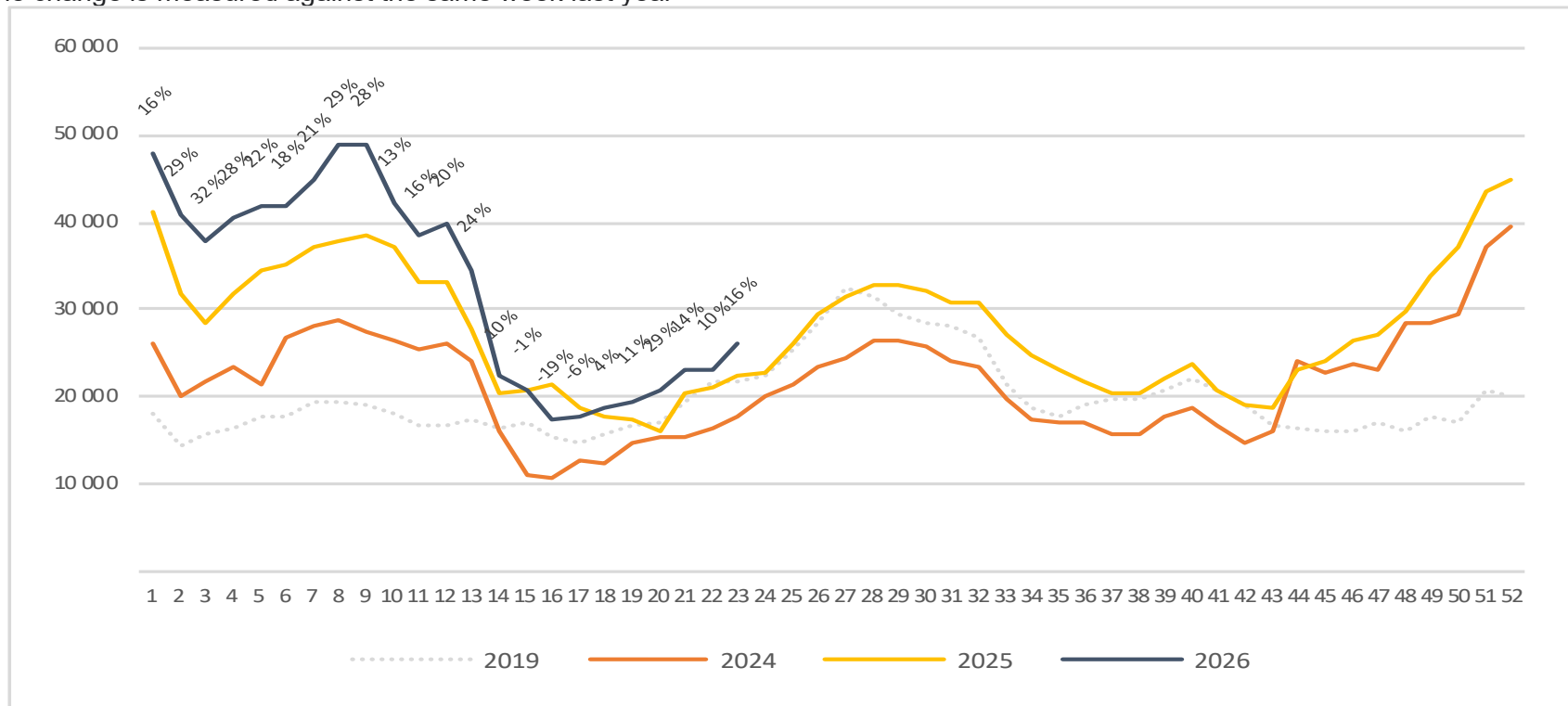
# Passengers Regional and local airports total per week

The change is measured against the same week last year



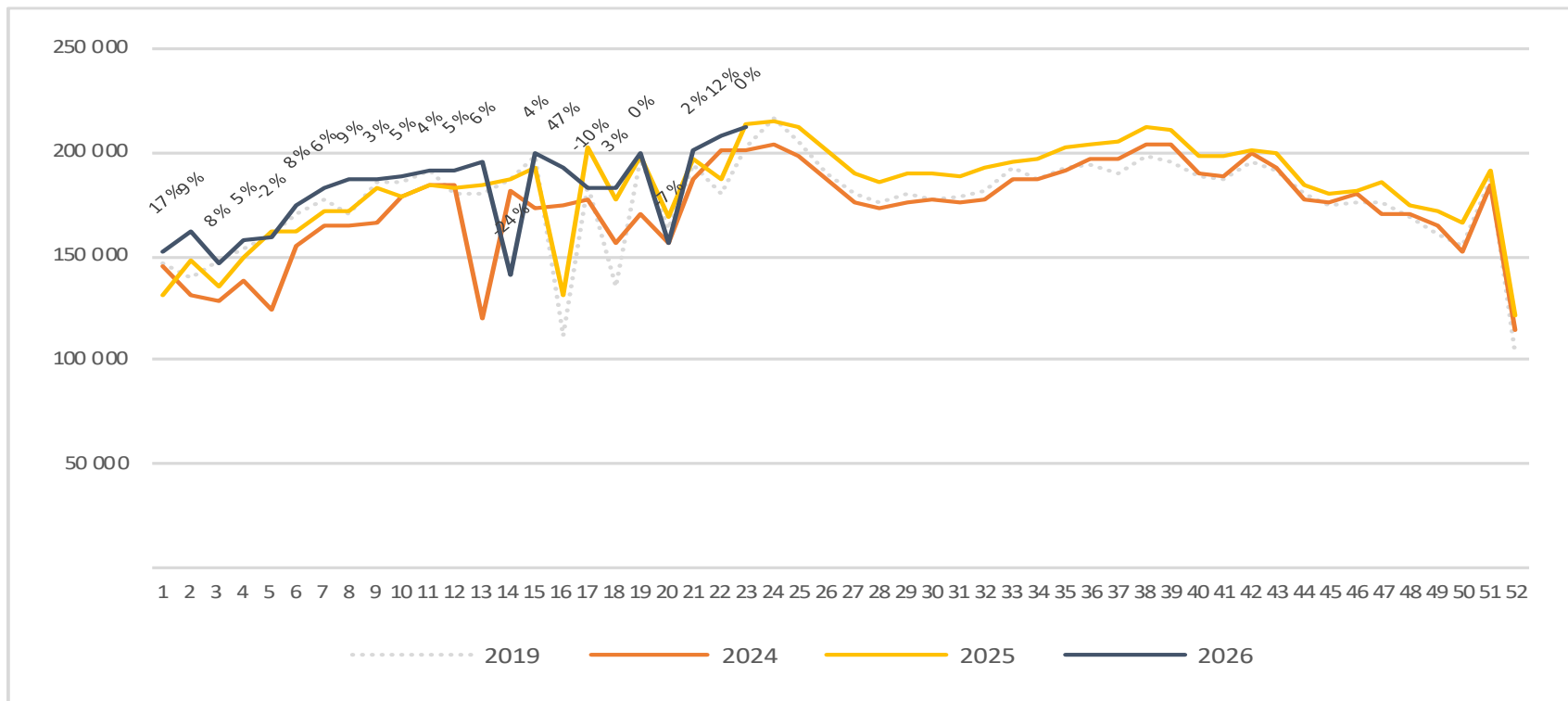
# Passengers Regional and local airports international per week

The change is measured against the same week last year



# Passengers Regional and local airports domestic per week

The change is measured against the same week last year



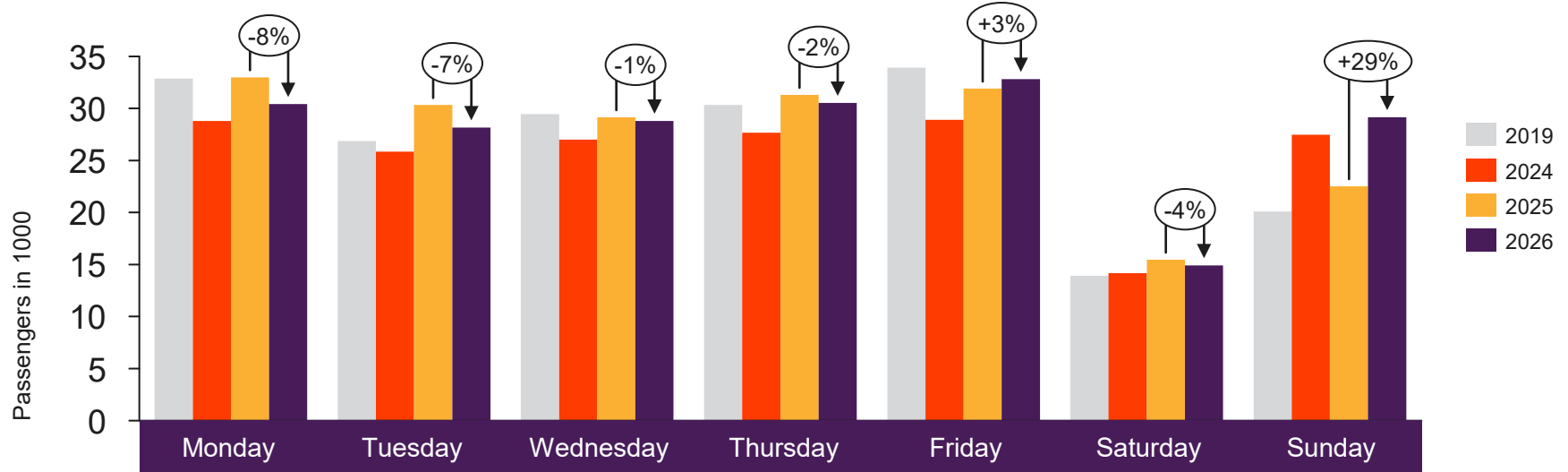


Return to content  
page

# Regional airports

Total passenger numbers from Alta, Bodø, Harstad/Narvik, Kirkenes, Kristiansand, Kristiansund, Molde, Svalbard, Tromsø and Ålesund

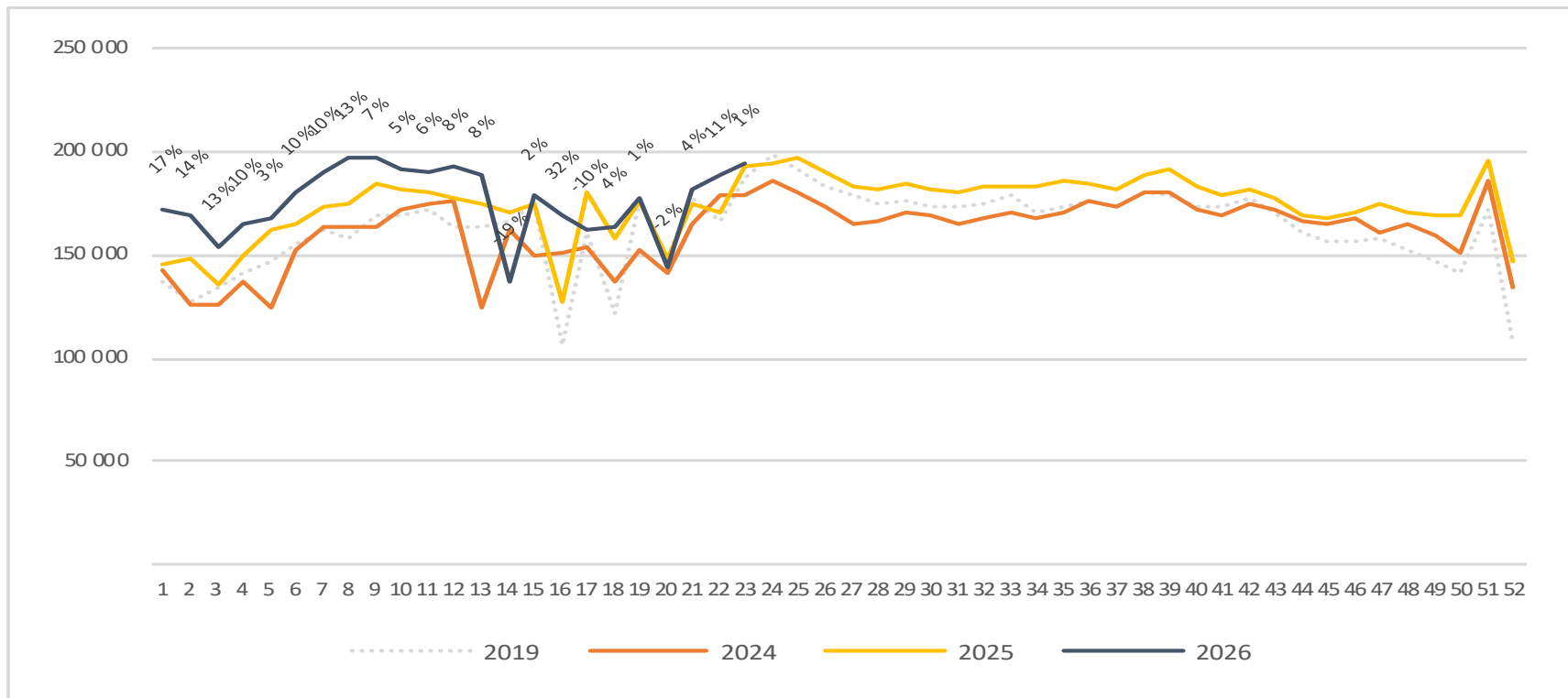
# Passengers Regional airports total per day week 23



	Monday	Tuesday	Wednesday	Thursday	Friday	Saturday	Sunday
2019	32 864	26 877	29 451	30 342	33 920	13 931	20 092
2024	28 790	25 861	27 008	27 669	28 920	14 159	27 488
2025	32 982	30 328	29 150	31 303	31 898	15 466	22 523
2026	30 420	28 161	28 802	30 538	32 828	14 920	29 144

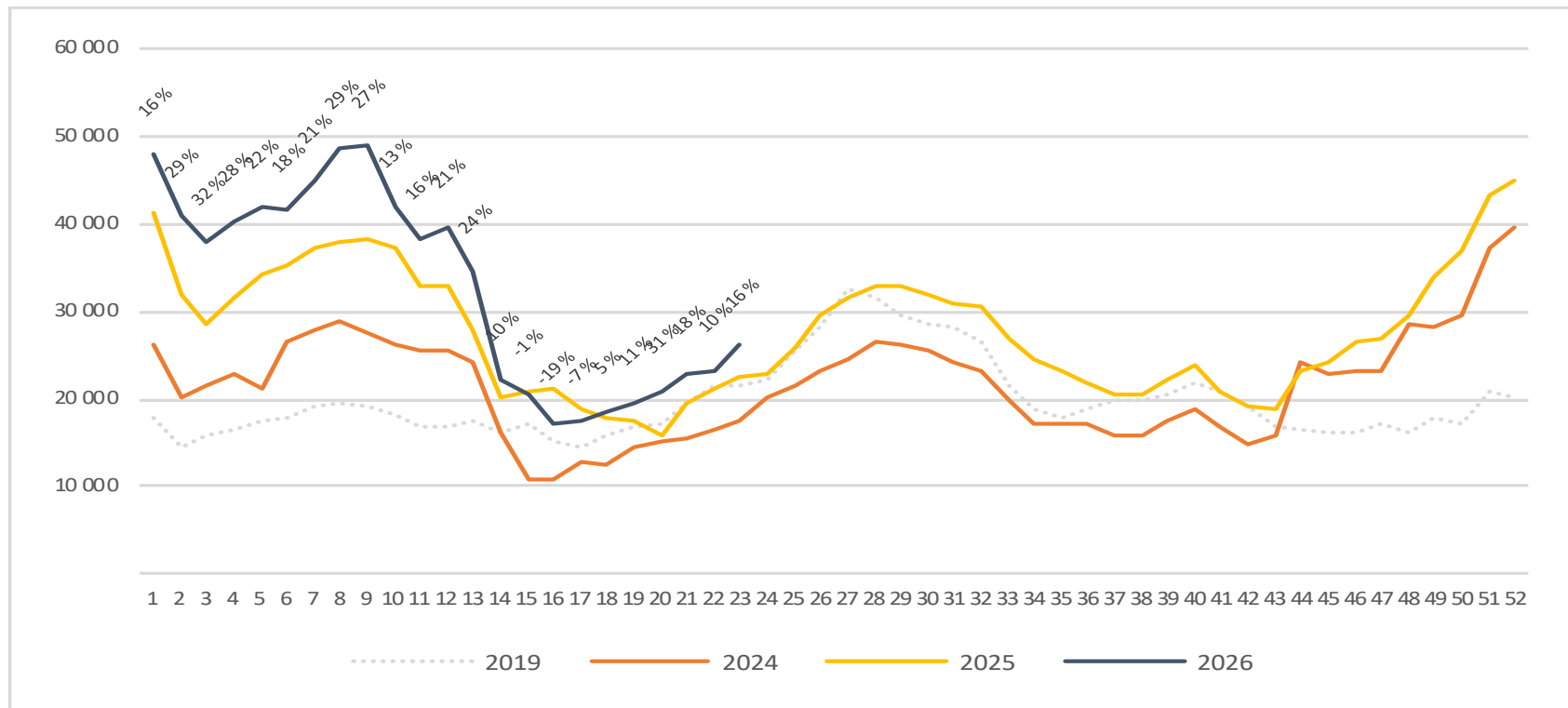
# Passengers Regional airports total per week

The change is measured against the same week last year



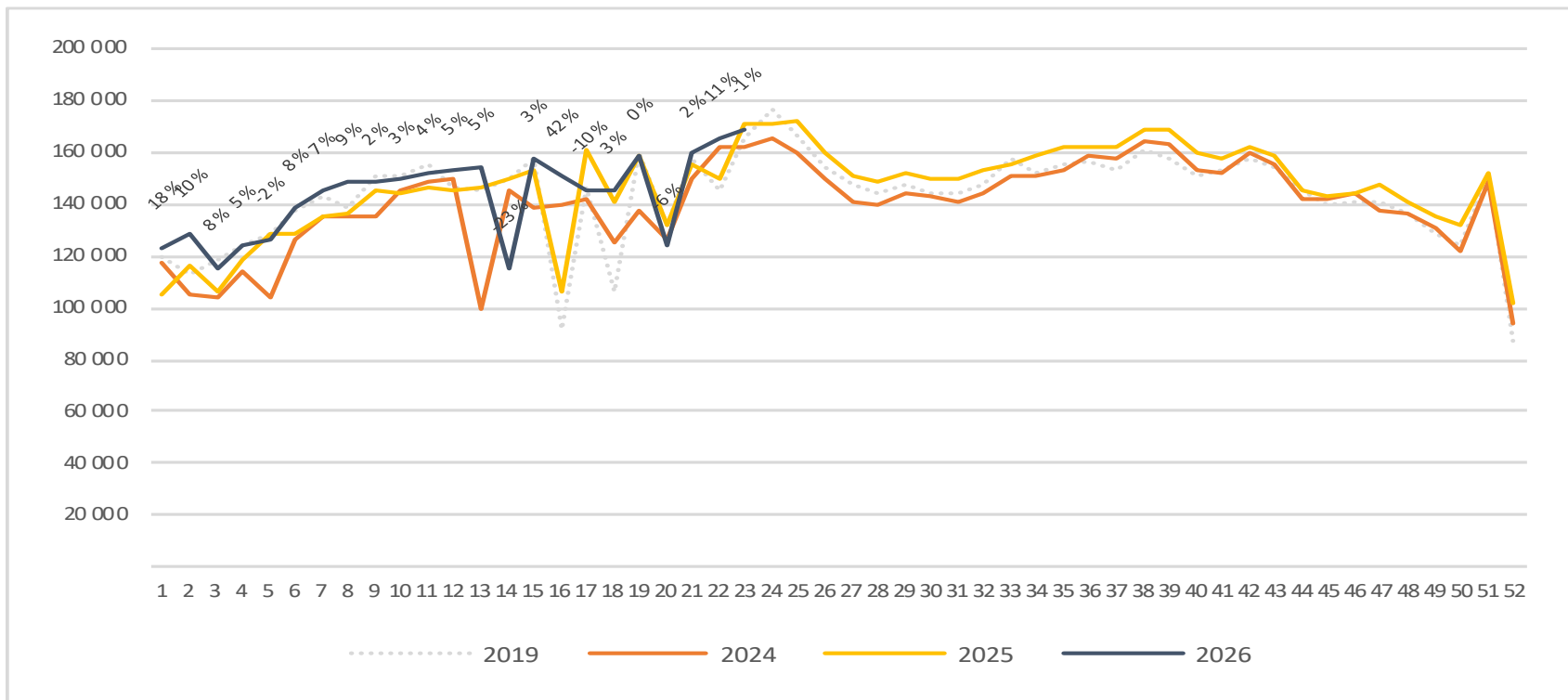
# Passengers Regional airports international per week

The change is measured against the same week last year



# Passengers Regional airports domestic per week

The change is measured against the same week last year



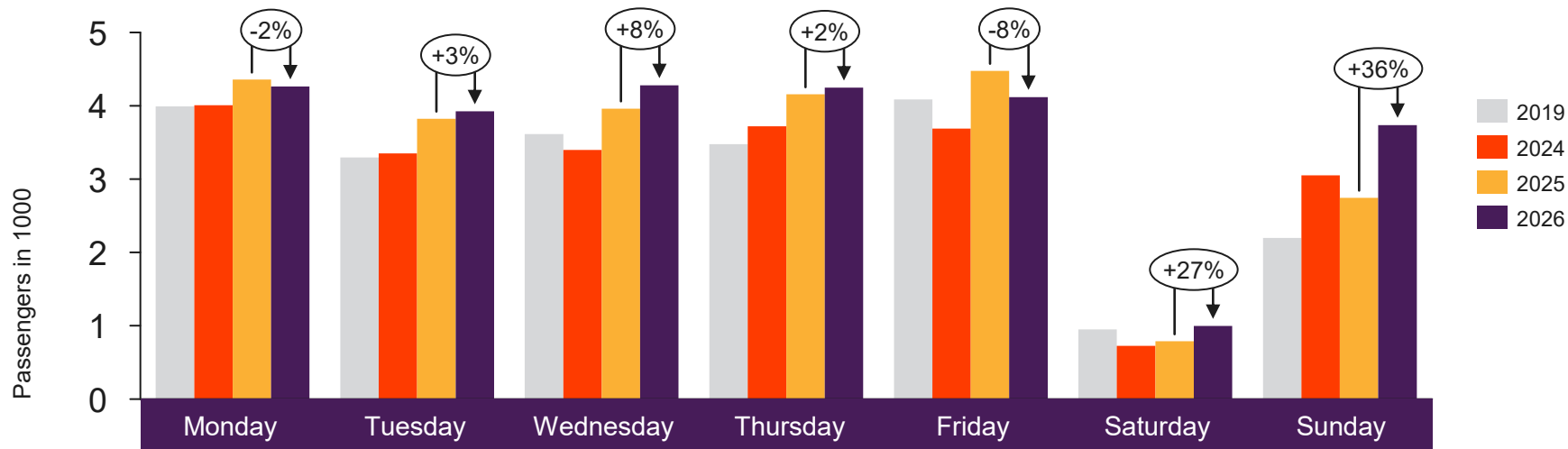


[Return to content  
page](#)

# Local Airports in Trøndelag and Nordland (Local Mid airports)

Total passenger numbers from Andenes, Bardufoss, Brønnøysund, Leknes, Mo i Rana, Mosjøen, Namsos, Rørvik, Røst, Sandnessjøen, Stokmarknes, Svolvær and Værøy

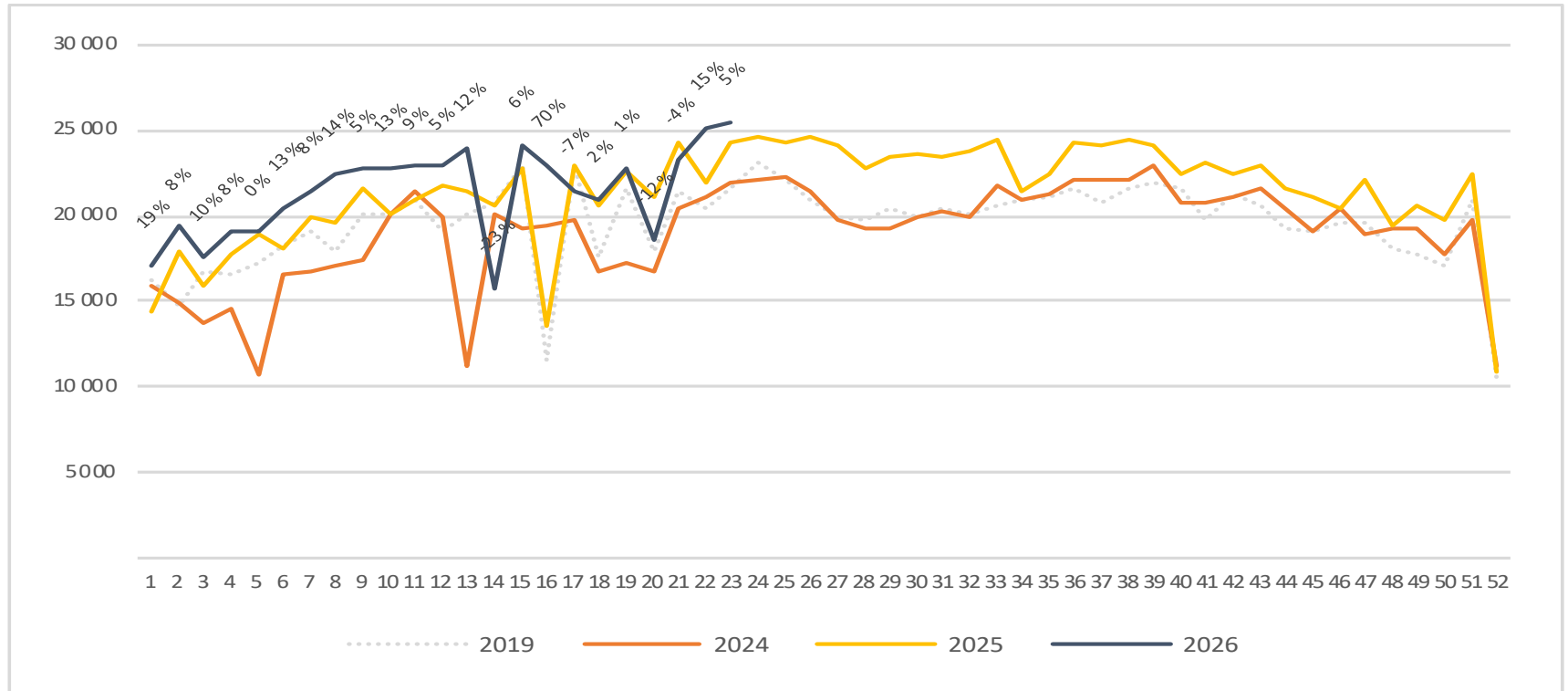
# Passengers Local Mid airports total per day week 23



	Monday	Tuesday	Wednesday	Thursday	Friday	Saturday	Sunday
2019	3 990	3 296	3 616	3 477	4 088	952	2 197
2024	4 009	3 350	3 397	3 722	3 690	726	3 052
2025	4 356	3 822	3 962	4 156	4 474	788	2 744
2026	4 264	3 924	4 280	4 247	4 119	997	3 738

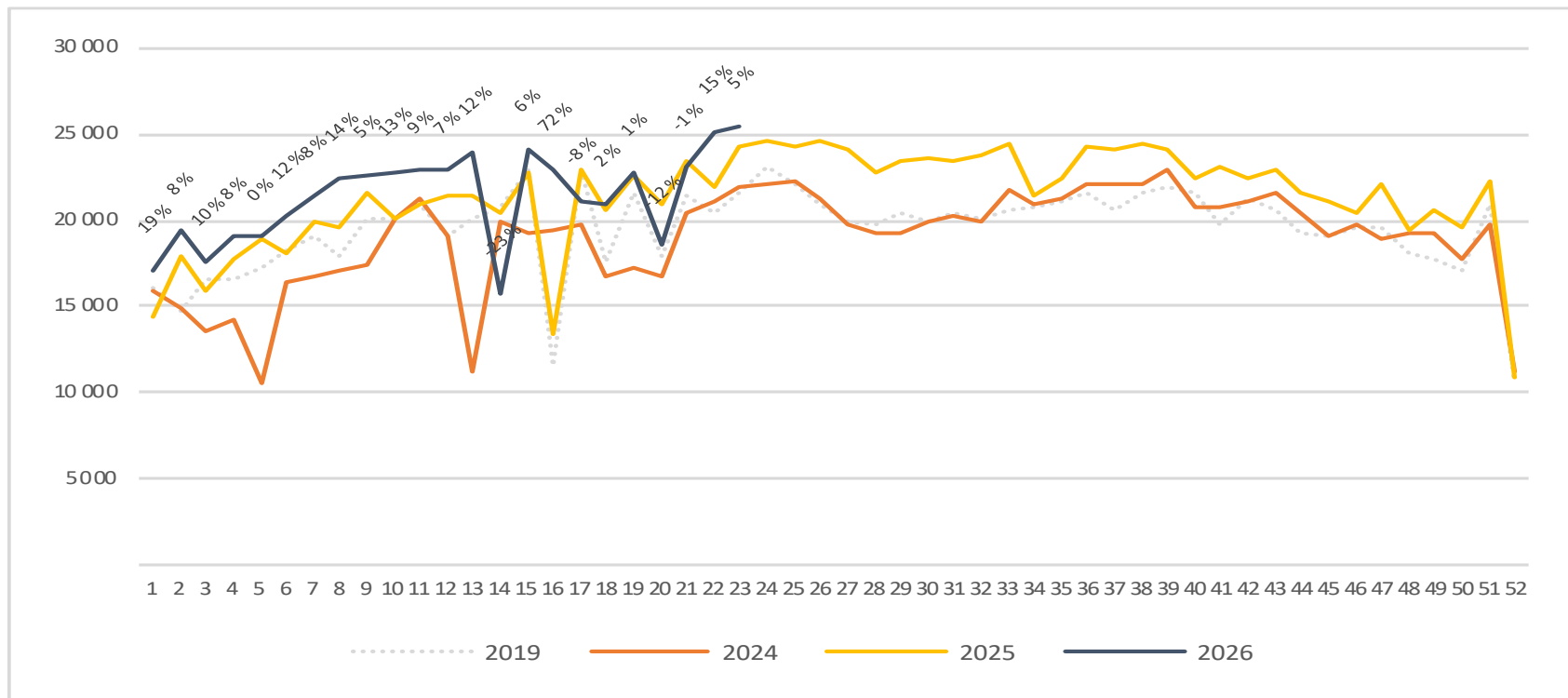
# Passengers Local Mid airports total per week

The change is measured against the same week last year



# Passengers Local Mid airports domestic per week

The change is measured against the same week last year



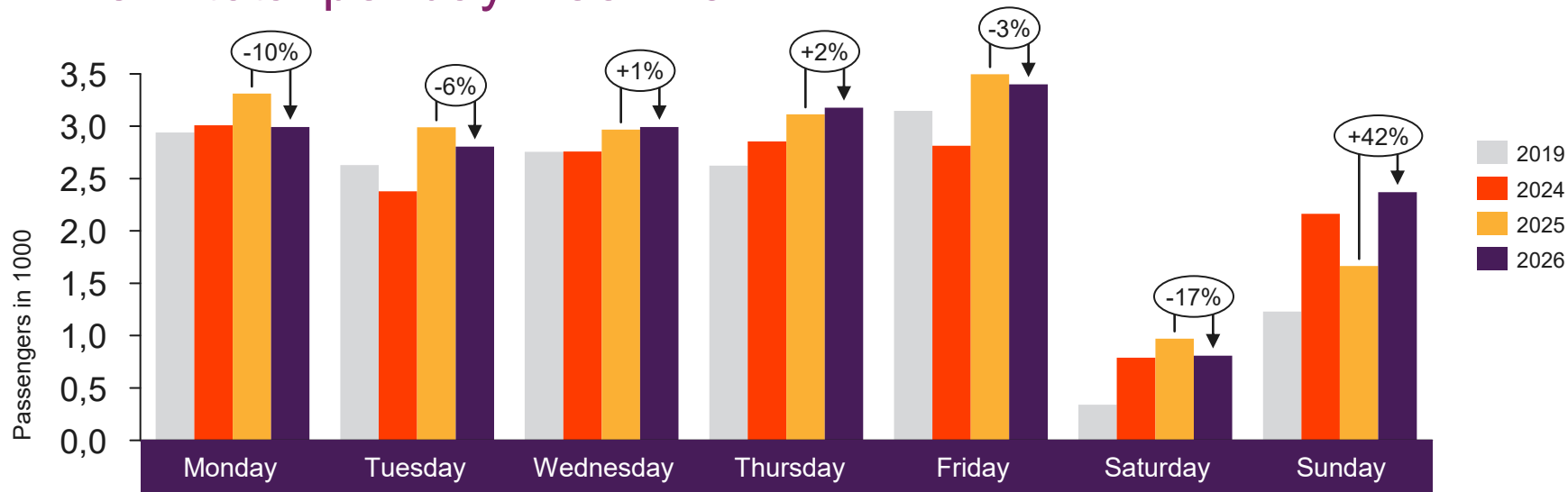


[Return to content  
page](#)

# Local airports on the West coast and in Troms and Finnmark

Total passenger numbers from Berlevåg, Båtsfjord, Florø, Førde, Hammerfest, Hasvik, Honningsvåg, Lakselv, Mehamn, Røros, Sandane, Sogndal, Sørkjosen, Vadsø, Vardø and Ørsta-Volda

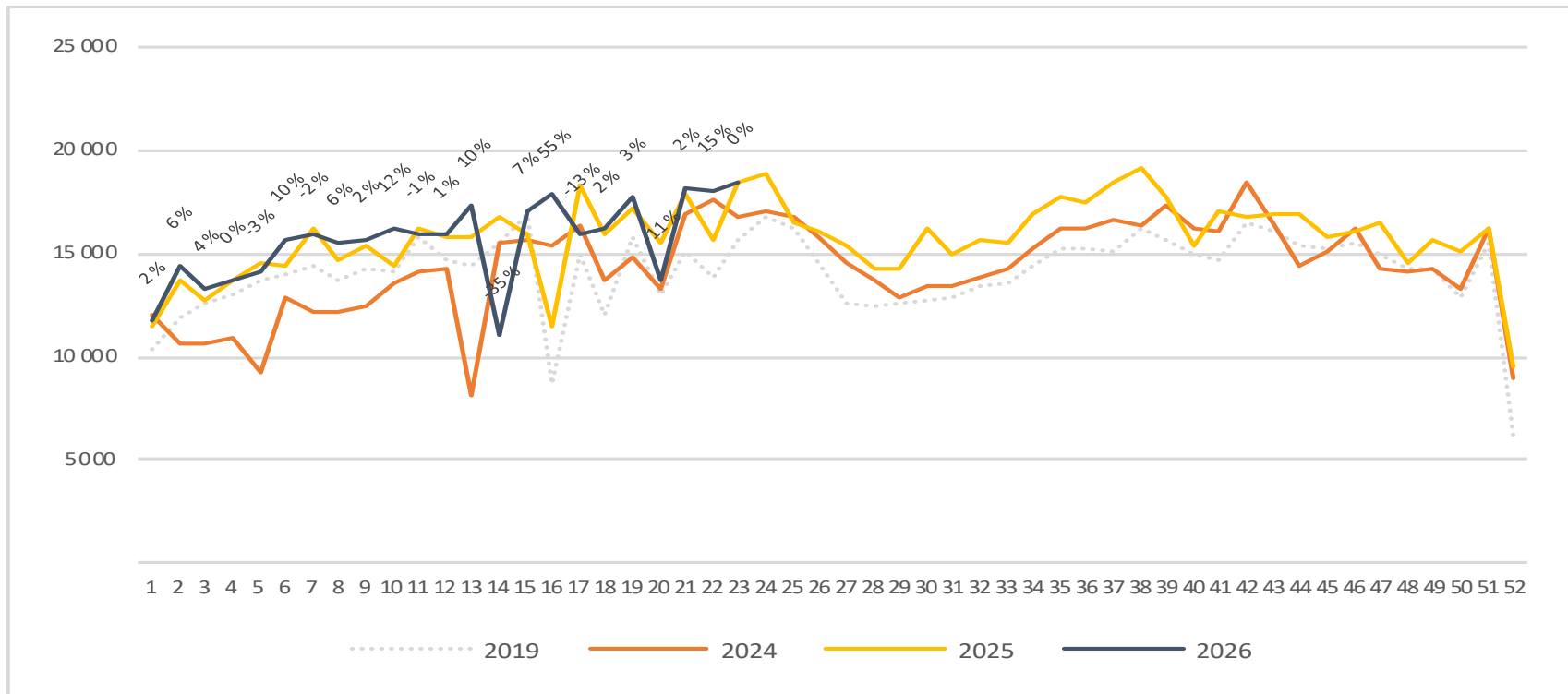
# Passengers local airports on the West coast and in Troms and Finnmark total per day week 23



	Monday	Tuesday	Wednesday	Thursday	Friday	Saturday	Sunday
2019	2 939	2 630	2 756	2 623	3 146	339	1 230
2024	3 008	2 378	2 758	2 855	2 813	789	2 163
2025	3 311	2 990	2 968	3 114	3 496	972	1 664
2026	2 992	2 806	2 993	3 176	3 401	808	2 370

# Passengers local airports on the West coast and in Troms and Finnmark total per week

The change is measured against the same week last year



# Passengers local airports on the West coast and in Troms and Finnmark domestic per week

The change is measured against the same week last year

