



Passenger numbers per week

Preliminary figures

- The figures for the previous week are preliminary. It takes some time for all passenger numbers to be reported, so the figures for the previous week may be lower than the final figures.
- The figures are from SIA, Avinor's traffic database.

Content

- Top 10 airports
- Avinor total
- Selected airports
- The 4 biggest airports
- Regional and local airports
 - Regional airports
 - Local airports in Trøndelag and Nordland
 - Local airports on the west coast of Norway and in Troms and Finnmark

Top 10 airports, total, week 12

Airport	2019	2024	2025	2026	2026 vs. 2025	
					Change	Change %
Oslo	517 725	492 535	471 439	490 347	18 908	4 %
Bergen	108 027	115 840	109 801	117 822	8 021	7 %
Trondheim	84 050	82 226	81 261	81 769	508	1 %
Stavanger	75 518	72 652	67 484	70 778	3 294	5 %
Tromsø	46 731	59 695	65 325	70 179	4 854	7 %
Bodø	32 776	34 735	35 805	38 083	2 278	6 %
Harstad/Narvik	13 991	16 831	16 322	18 572	2 250	14 %
Ålesund	20 976	19 785	18 207	17 821	-386	-2 %
Kristiansand	19 691	16 459	14 364	16 126	1 762	12 %
Alta	7 328	7 032	7 064	7 551	487	7 %

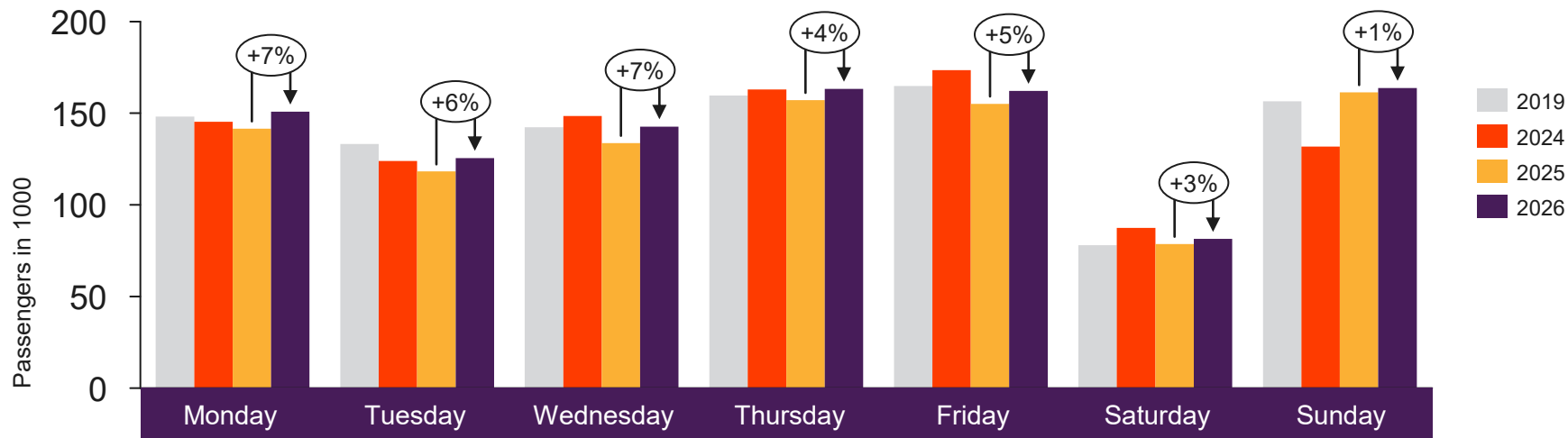


[Return to content page](#)

Avinor total

Passenger numbers for all Avinor airports

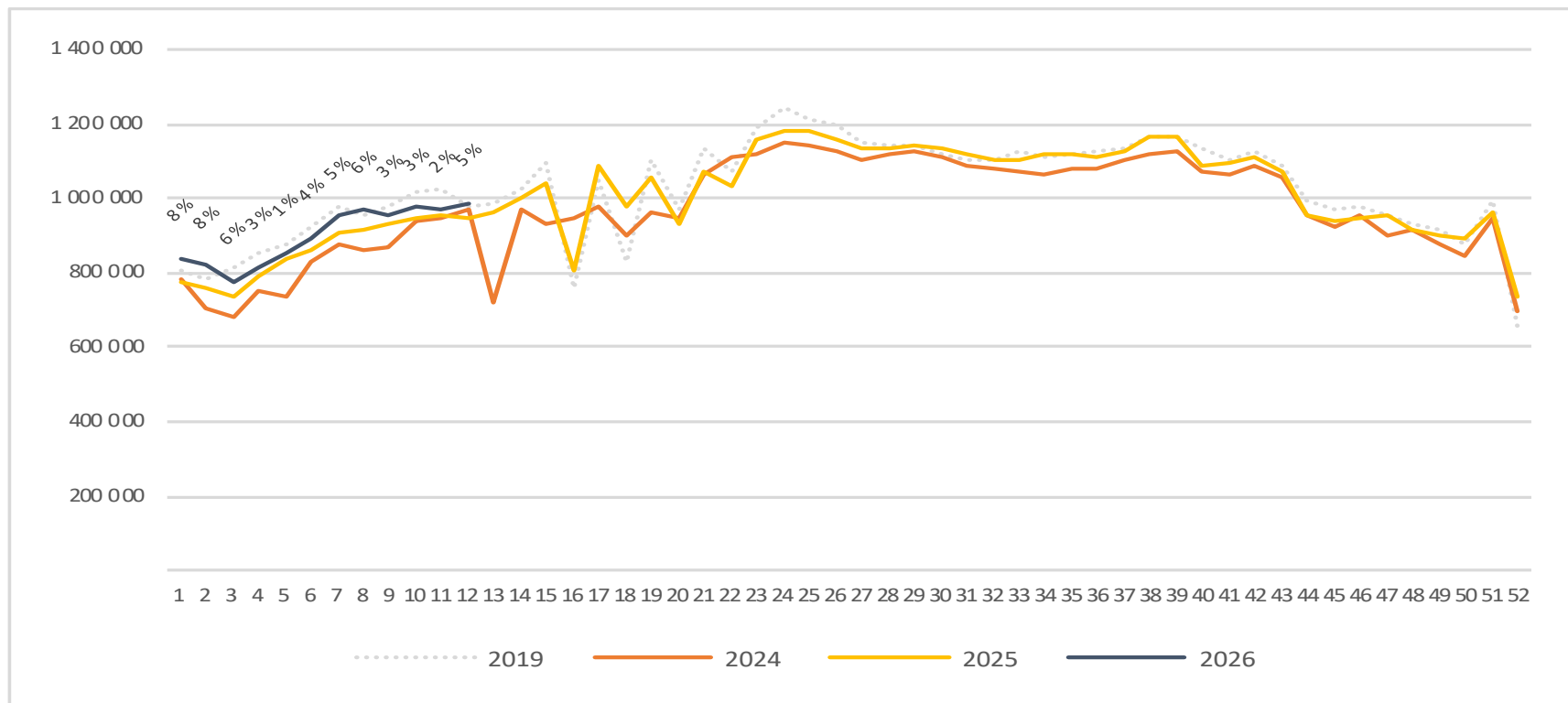
Passengers Avinor total per day week 12



	Monday	Tuesday	Wednesday	Thursday	Friday	Saturday	Sunday
2019	148 159	133 167	142 386	159 675	164 827	78 011	156 508
2024	145 415	123 925	148 458	162 944	173 516	87 471	131 745
2025	141 591	118 219	133 724	157 170	155 173	78 669	161 414
2026	150 888	125 533	142 720	163 237	162 212	81 384	163 802

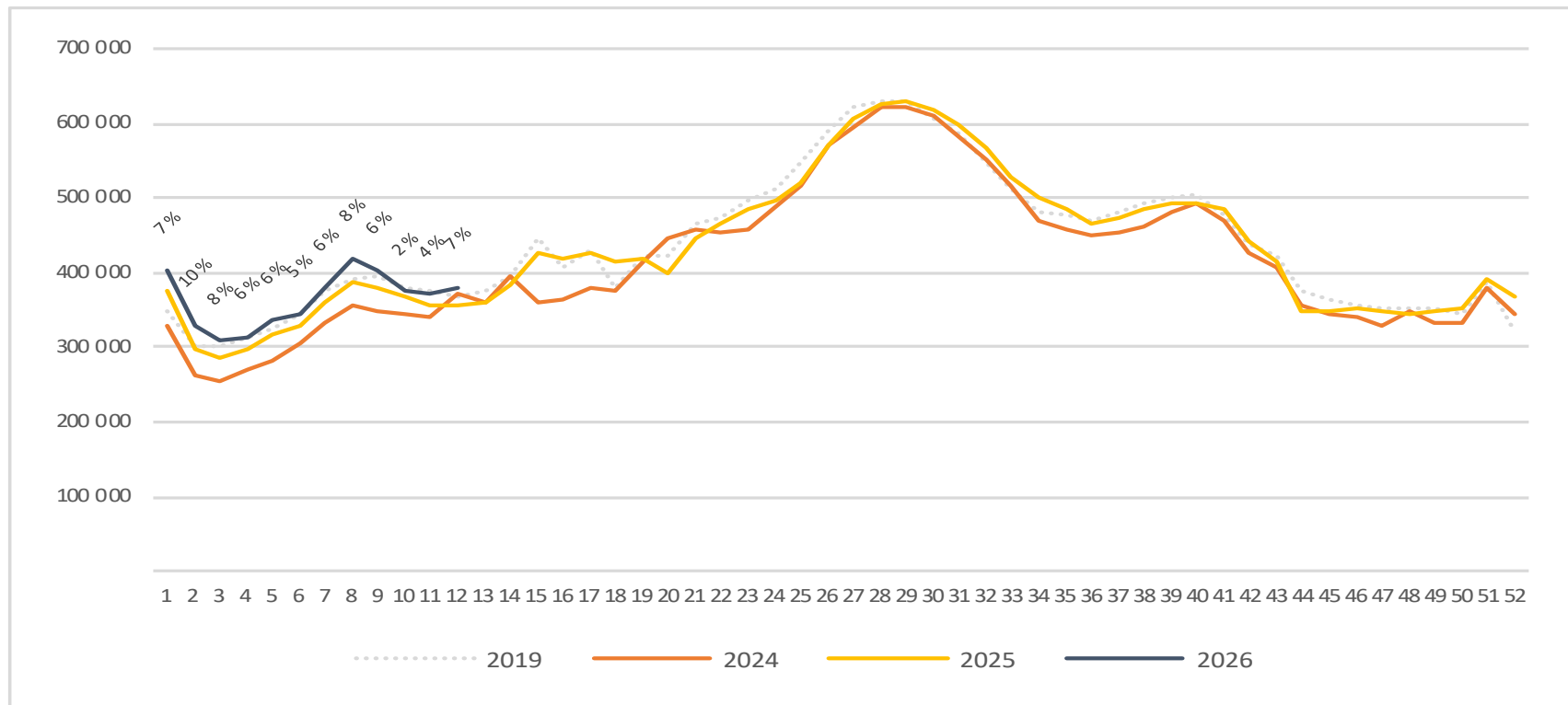
Passengers Avinor total per week

The change is measured against the same week last year



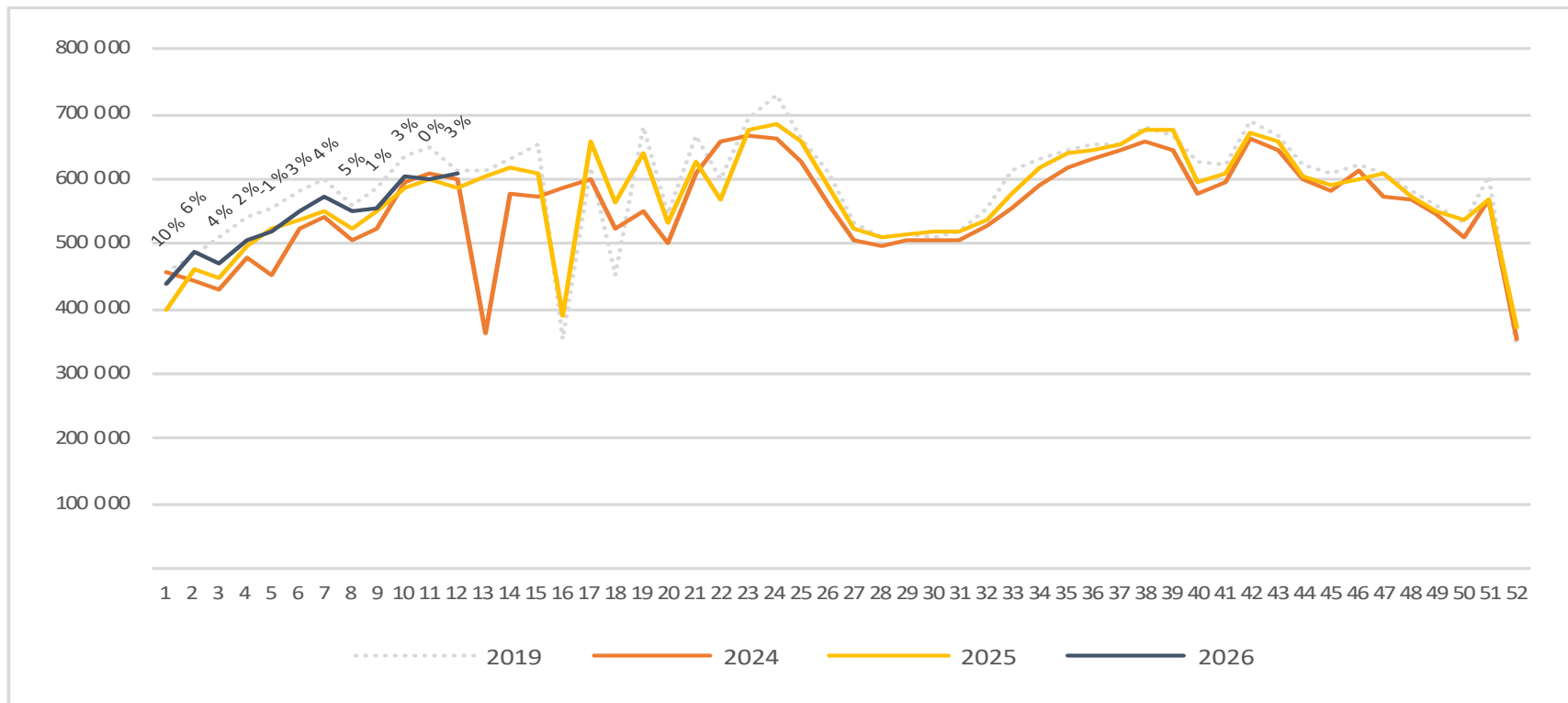
Passengers Avinor international per week

The change is measured against the same week last year



Passengers Avinor domestic per week

The change is measured against the same week last year

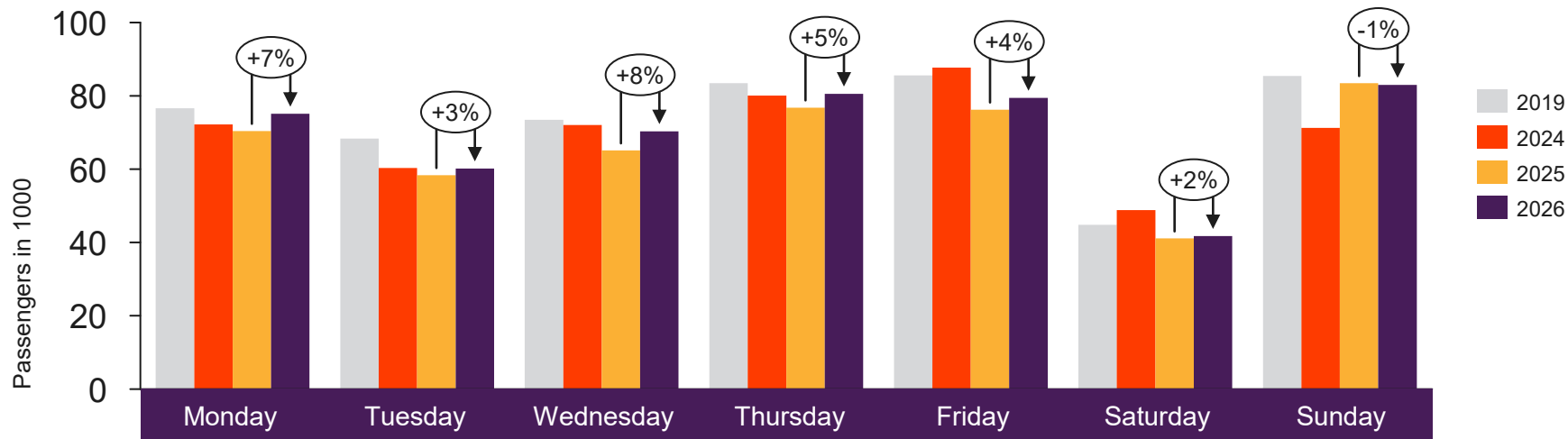




[Return to content page](#)

Selected airports

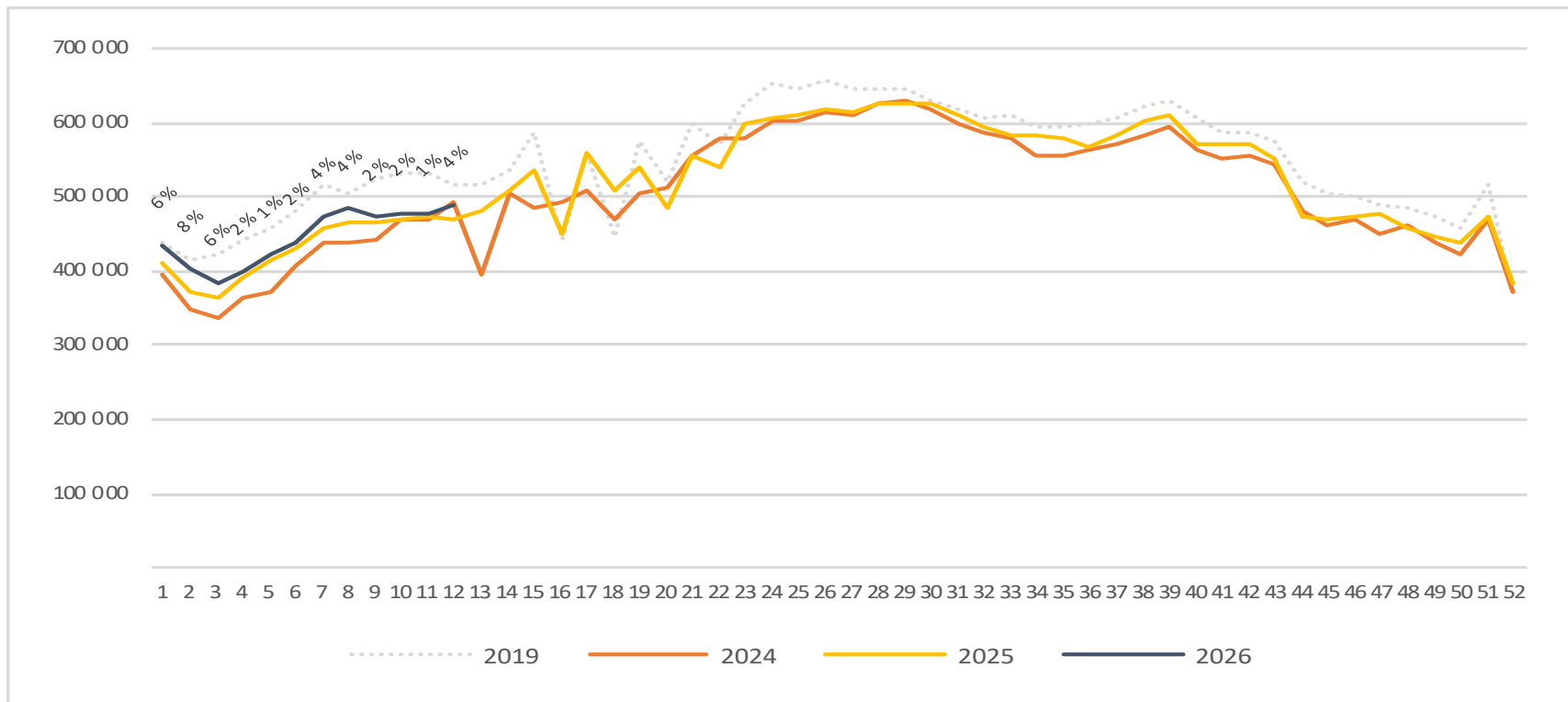
Passengers OSL total per day week 12



	Monday	Tuesday	Wednesday	Thursday	Friday	Saturday	Sunday
2019	76 624	68 340	73 431	83 471	85 596	44 849	85 414
2024	72 199	60 352	72 083	80 109	87 703	48 854	71 235
2025	70 421	58 348	65 105	76 801	76 193	41 092	83 479
2026	75 087	60 186	70 347	80 551	79 453	41 733	82 990

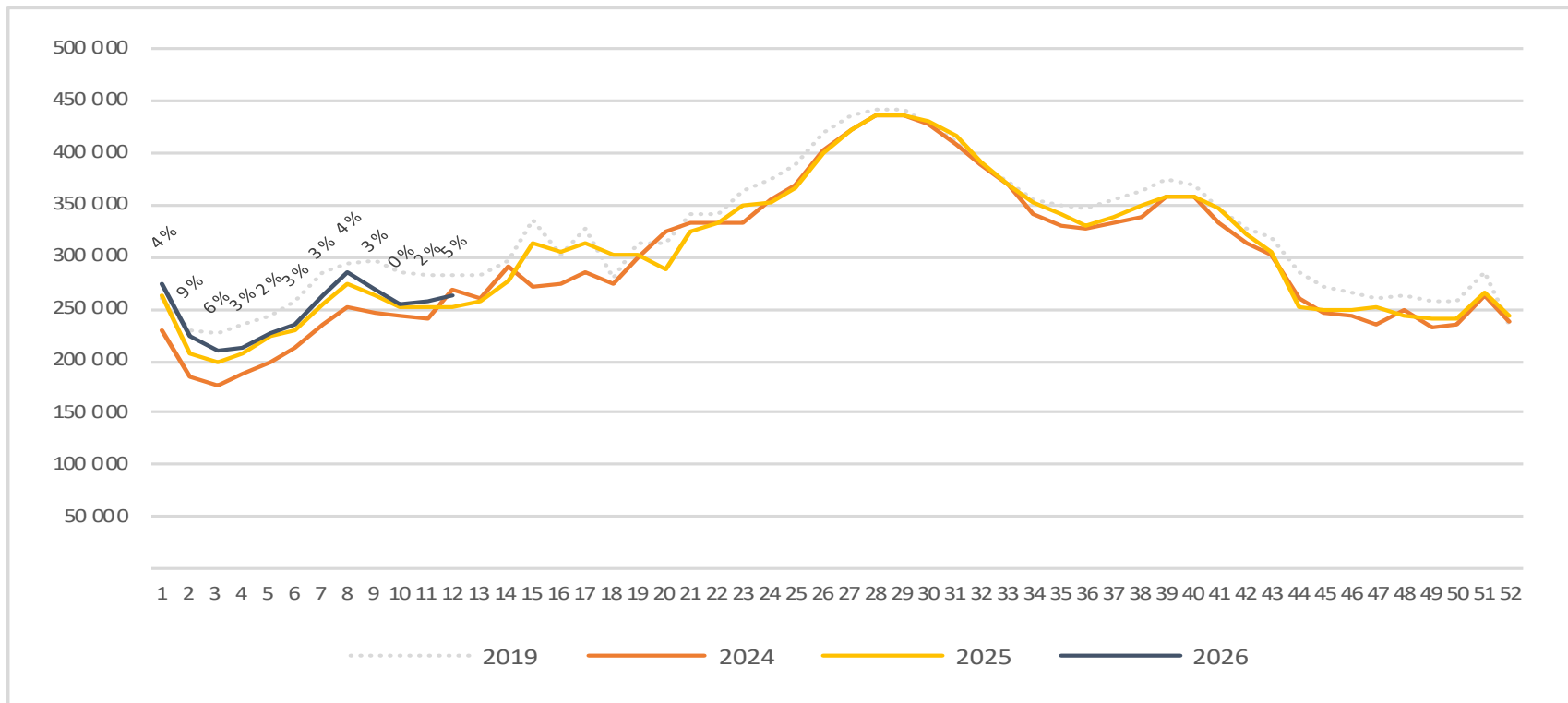
Passengers OSL total per week

The change is measured against the same week last year



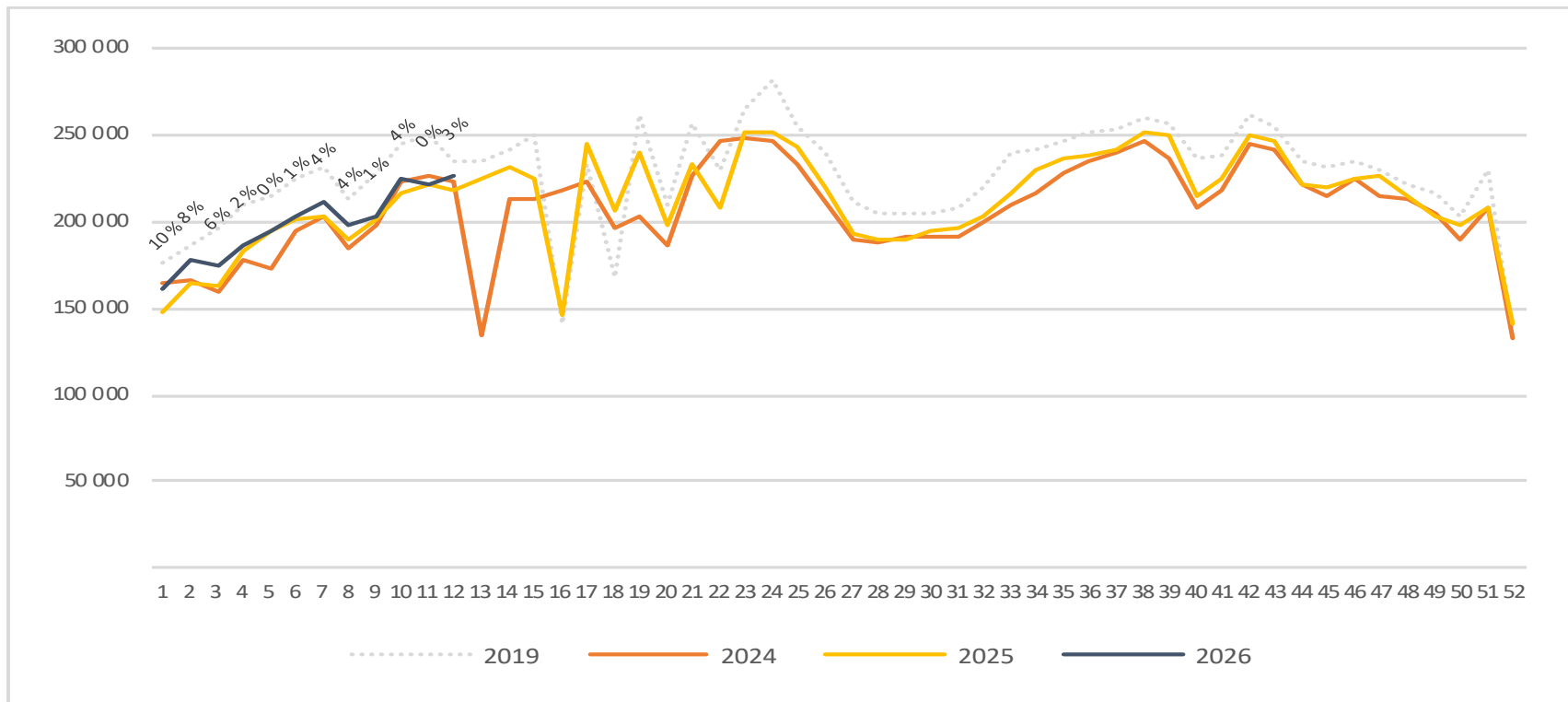
Passengers OSL international per week

The change is measured against the same week last year

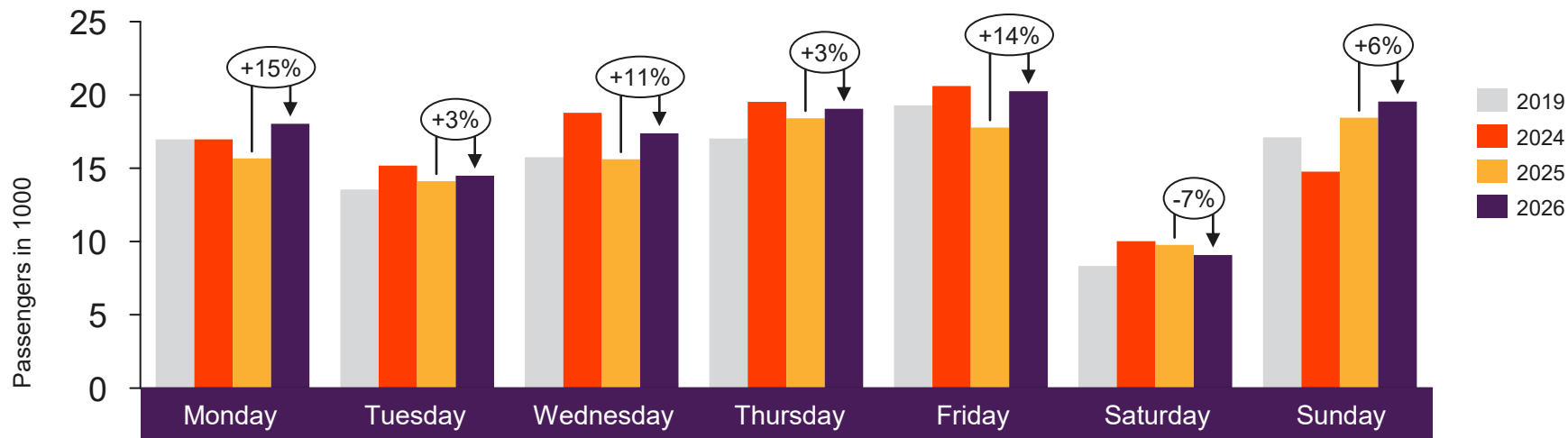


Passengers OSL domestic per week

The change is measured against the same week last year



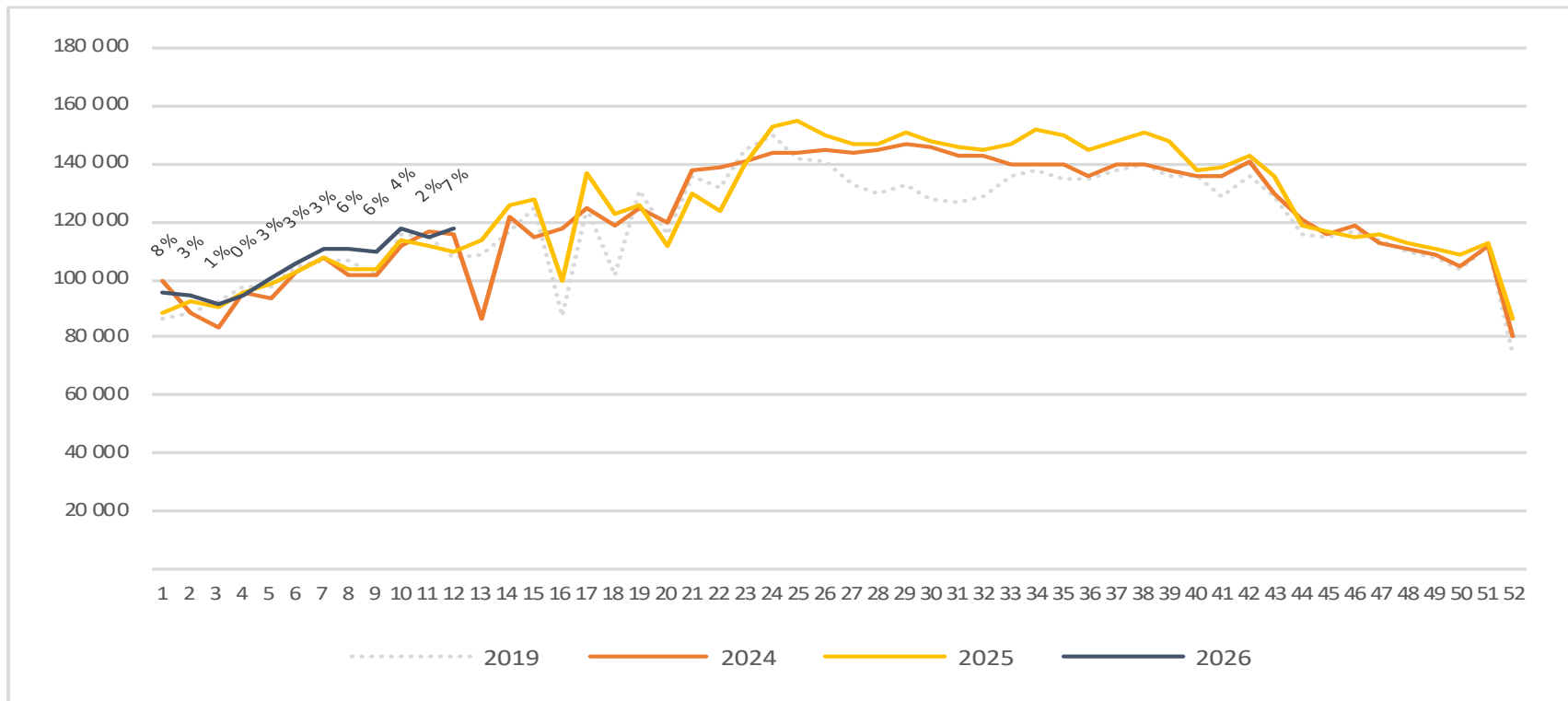
Passengers BGO total per day week 12



2019	16 966	13 538	15 747	17 028	19 300	8 341	17 107
2024	16 964	15 176	18 778	19 523	20 602	10 031	14 766
2025	15 662	14 116	15 609	18 413	17 779	9 776	18 446
2026	18 028	14 481	17 377	19 056	20 247	9 089	19 544

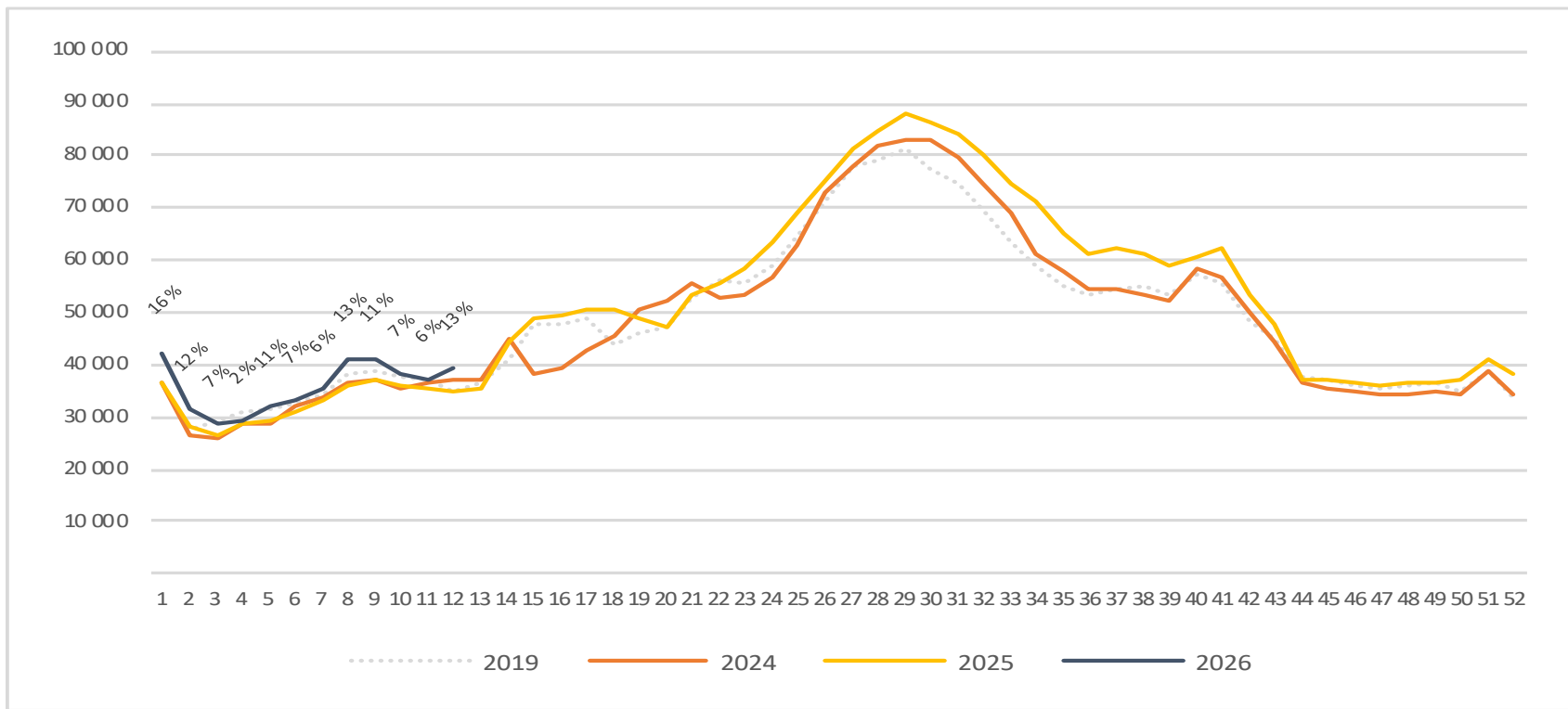
Passengers BGO total per week

The change is measured against the same week last year



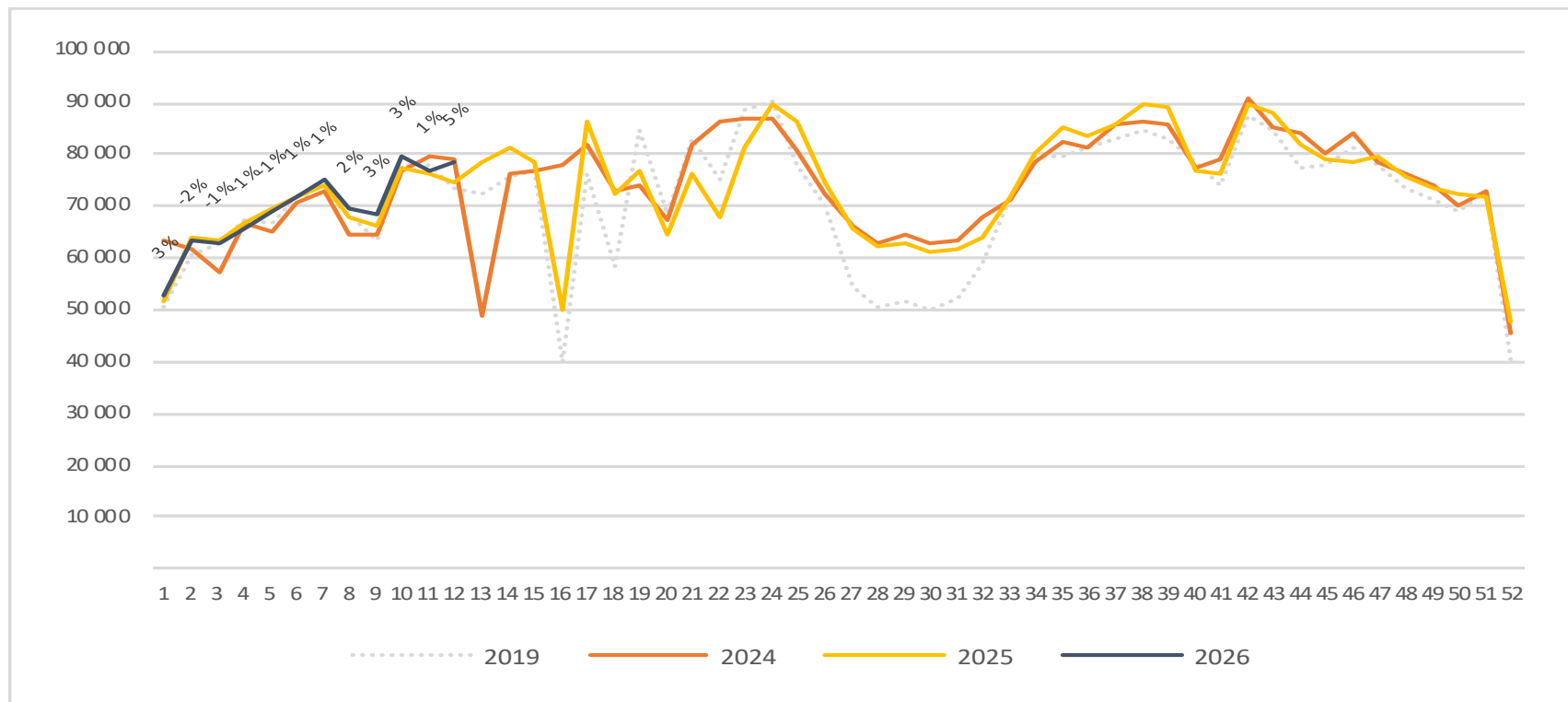
Passengers BGO international per week

The change is measured against the same week last year

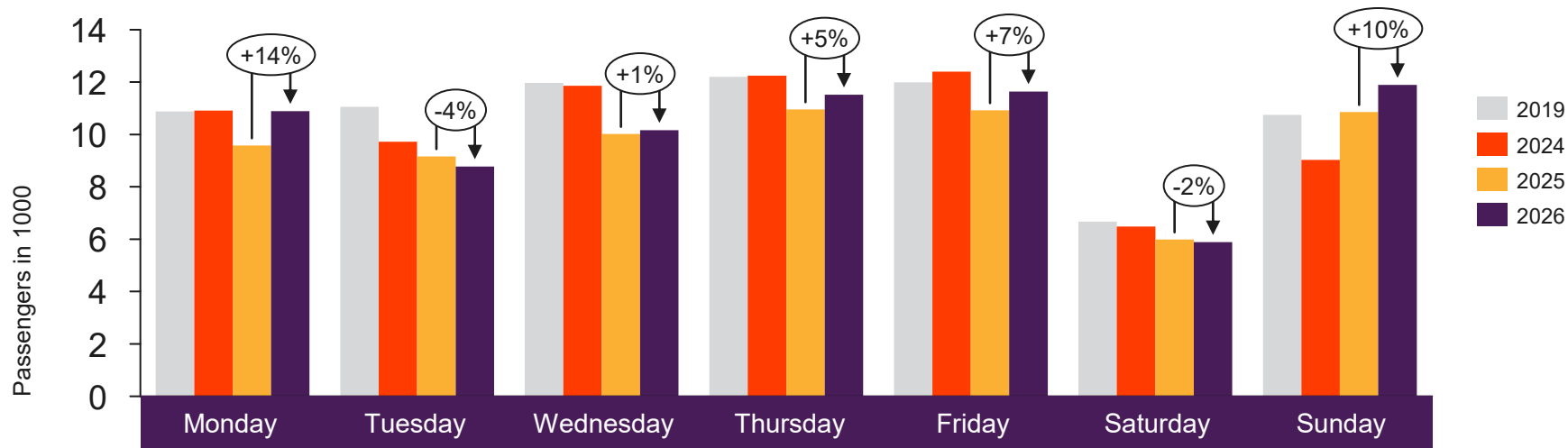


Passengers BGO domestic per week

The change is measured against the same week last year



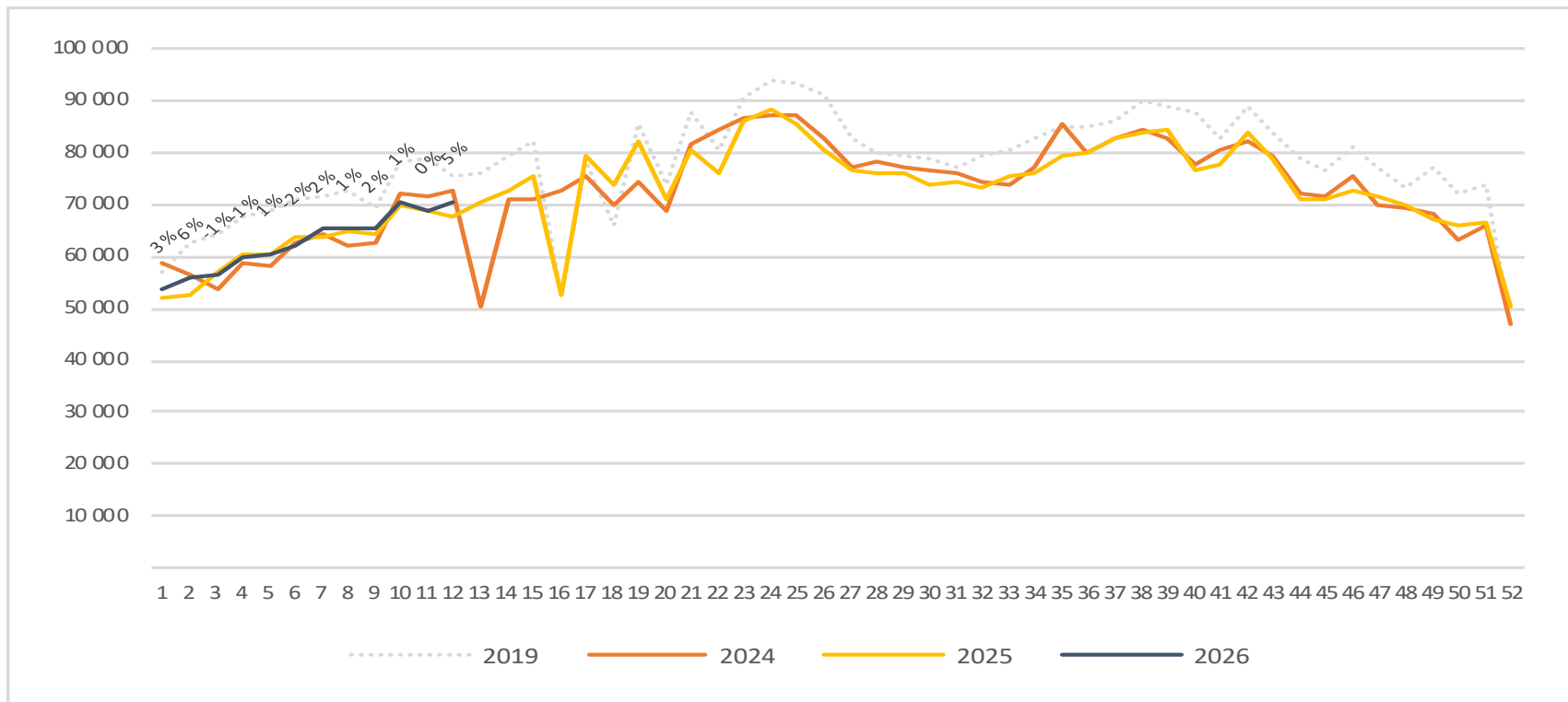
Passengers SVG total per day week 12



2019	10 876	11 054	11 966	12 202	11 996	6 673	10 751
2024	10 916	9 720	11 859	12 247	12 396	6 483	9 031
2025	9 581	9 164	10 018	10 956	10 921	5 986	10 858
2026	10 888	8 774	10 164	11 522	11 645	5 891	11 894

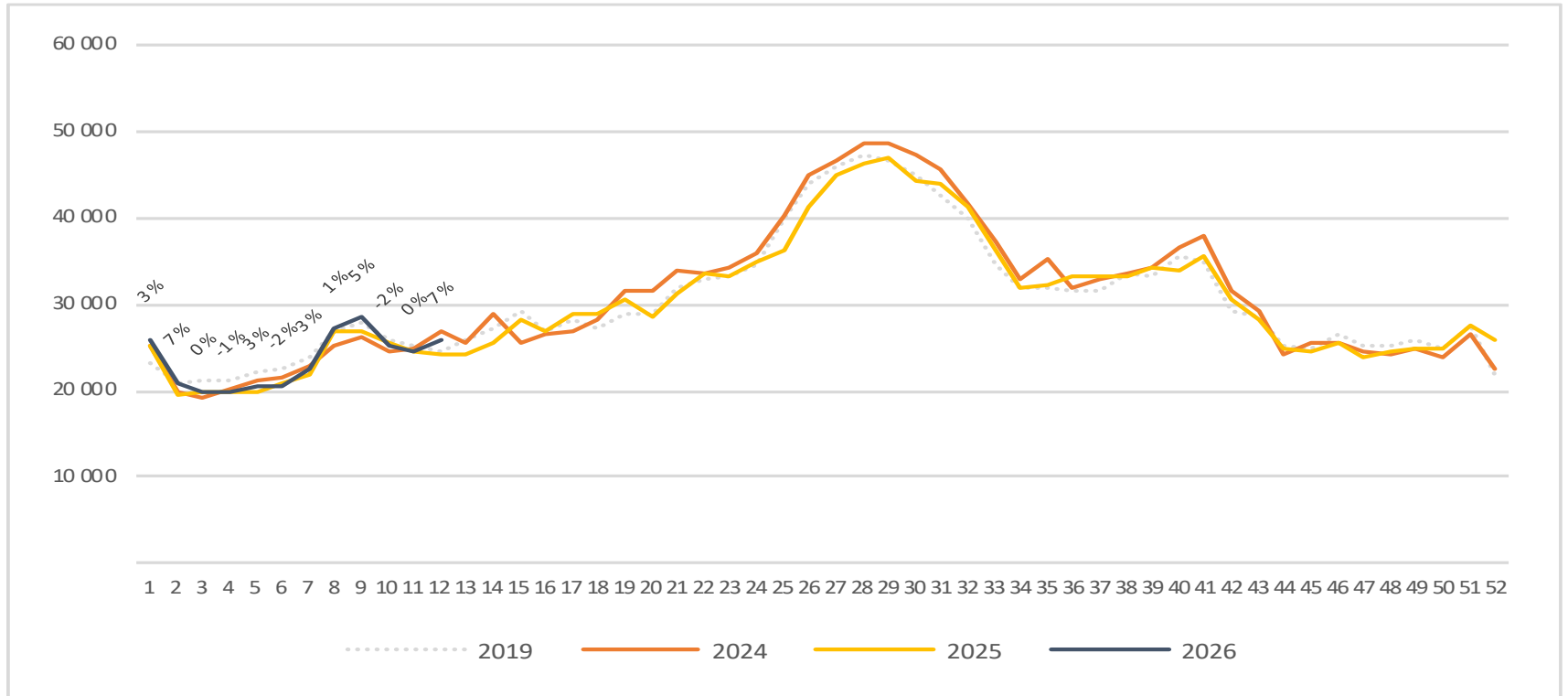
Passengers SVG total per week

The change is measured against the same week last year



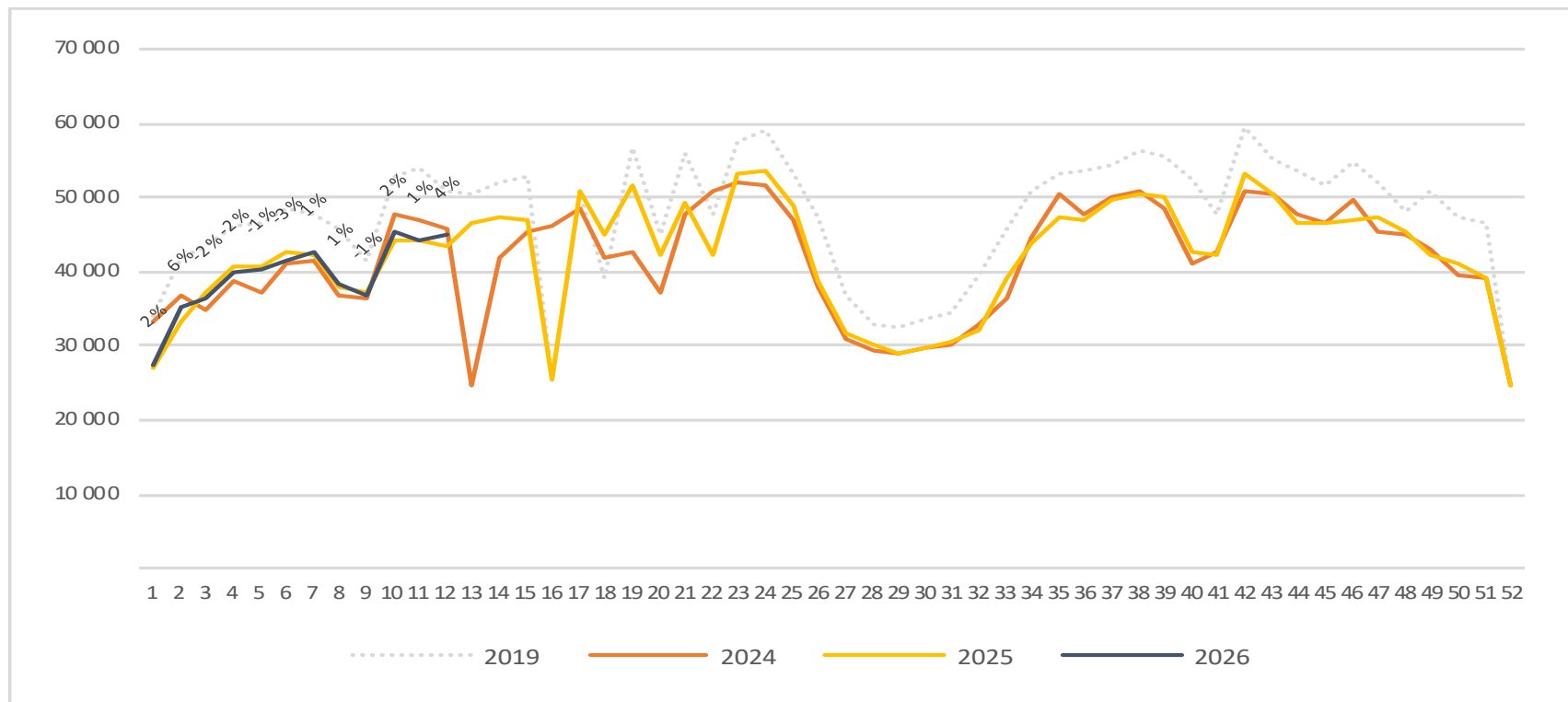
Passengers SVG international per week

The change is measured against the same week last year

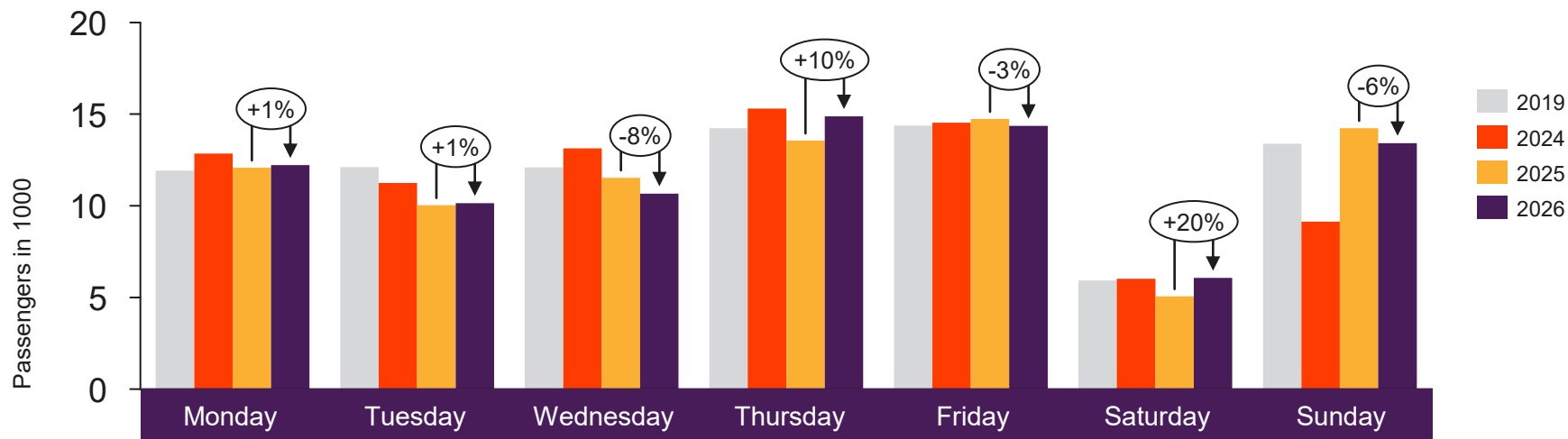


Passengers SVG domestic per week

The change is measured against the same week last year



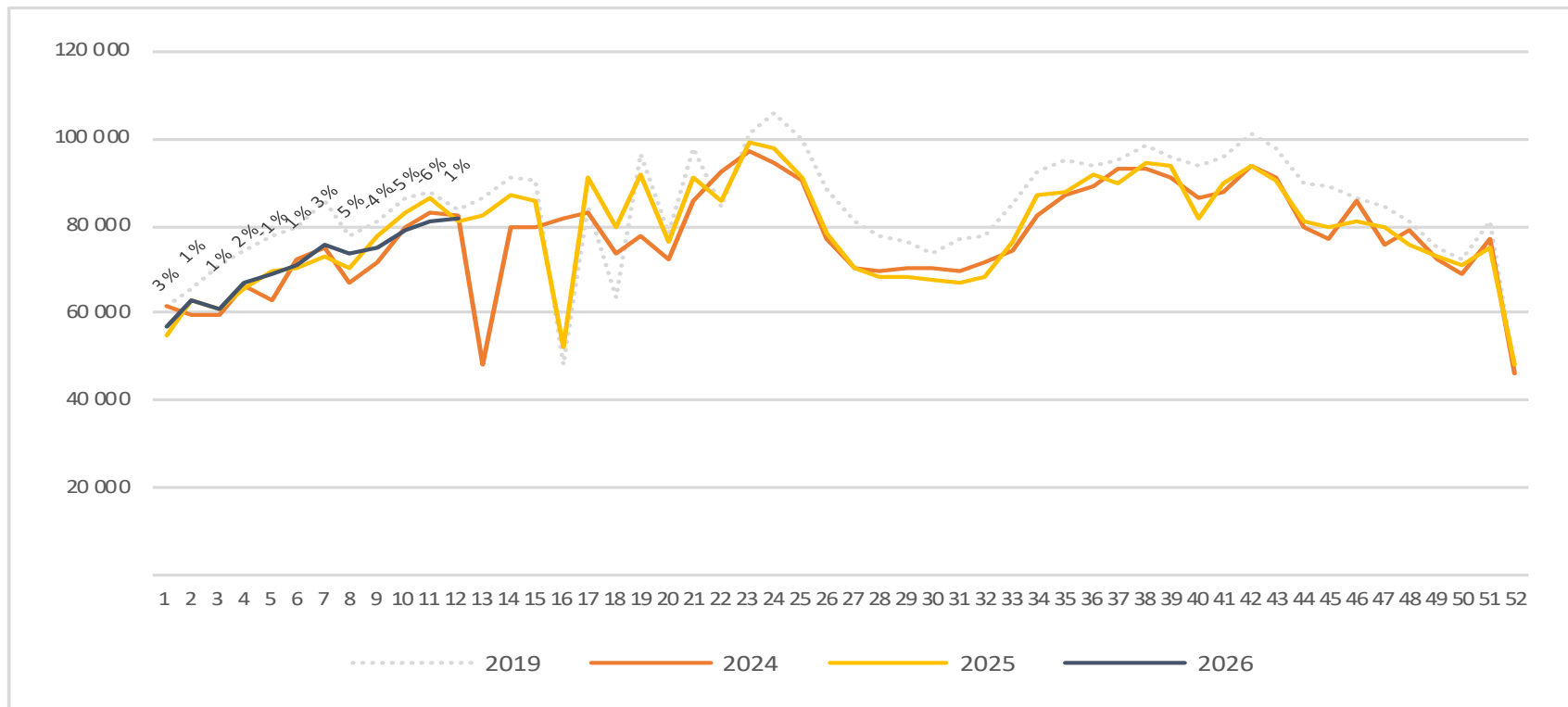
Passengers TRD total per day week 12



	Monday	Tuesday	Wednesday	Thursday	Friday	Saturday	Sunday
2019	11 916	12 116	12 095	14 229	14 376	5 926	13 392
2024	12 850	11 239	13 141	15 304	14 532	6 027	9 133
2025	12 086	10 036	11 536	13 555	14 744	5 063	14 241
2026	12 219	10 144	10 670	14 883	14 362	6 072	13 419

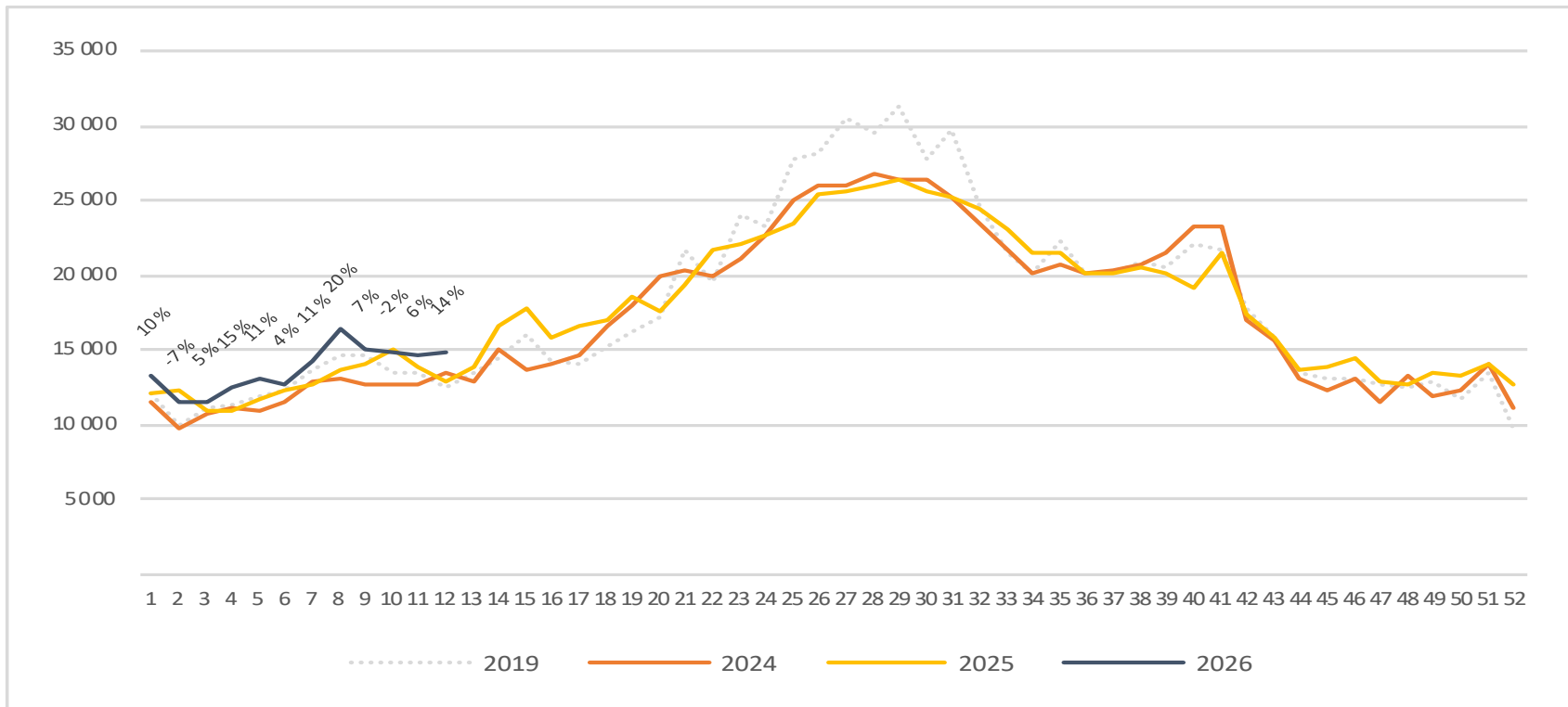
Passengers TRD total per week

The change is measured against the same week last year



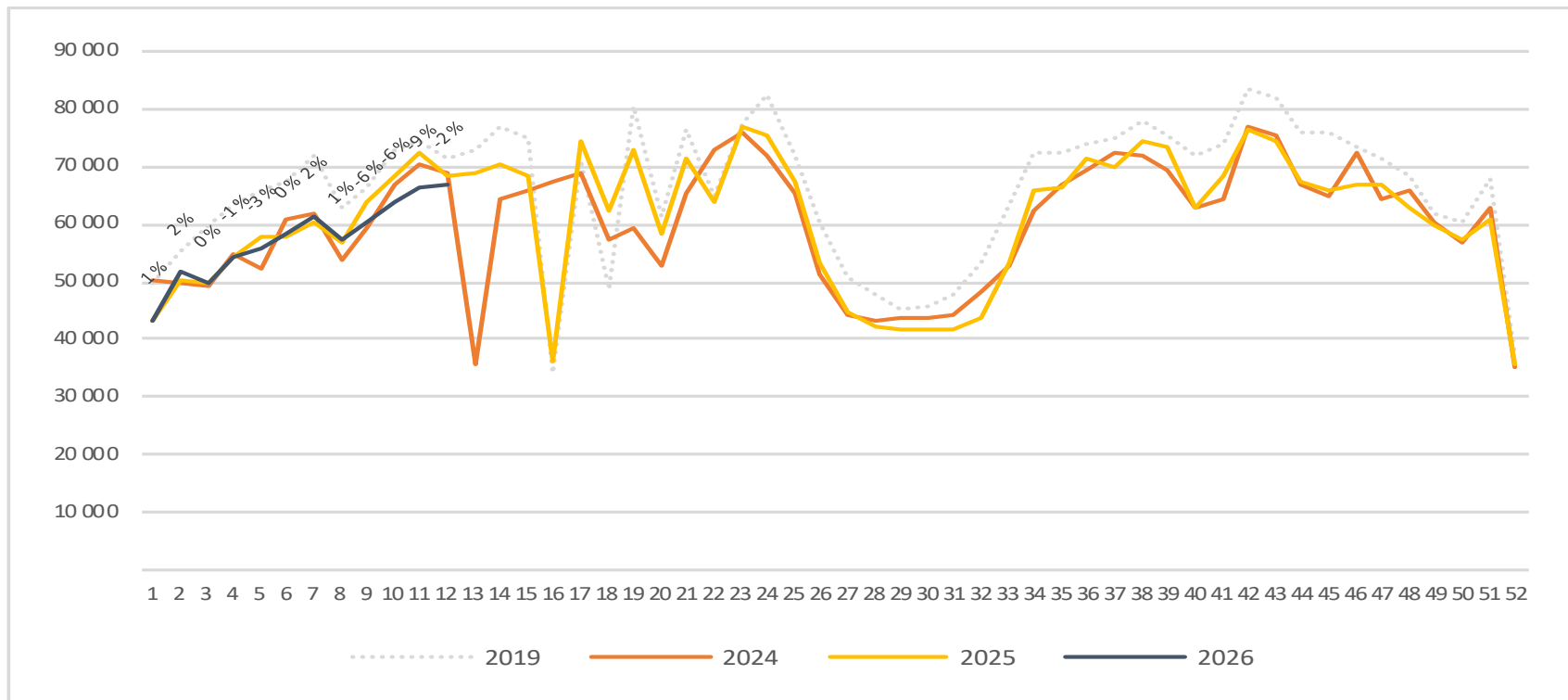
Passengers TRD international per week

The change is measured against the same week last year

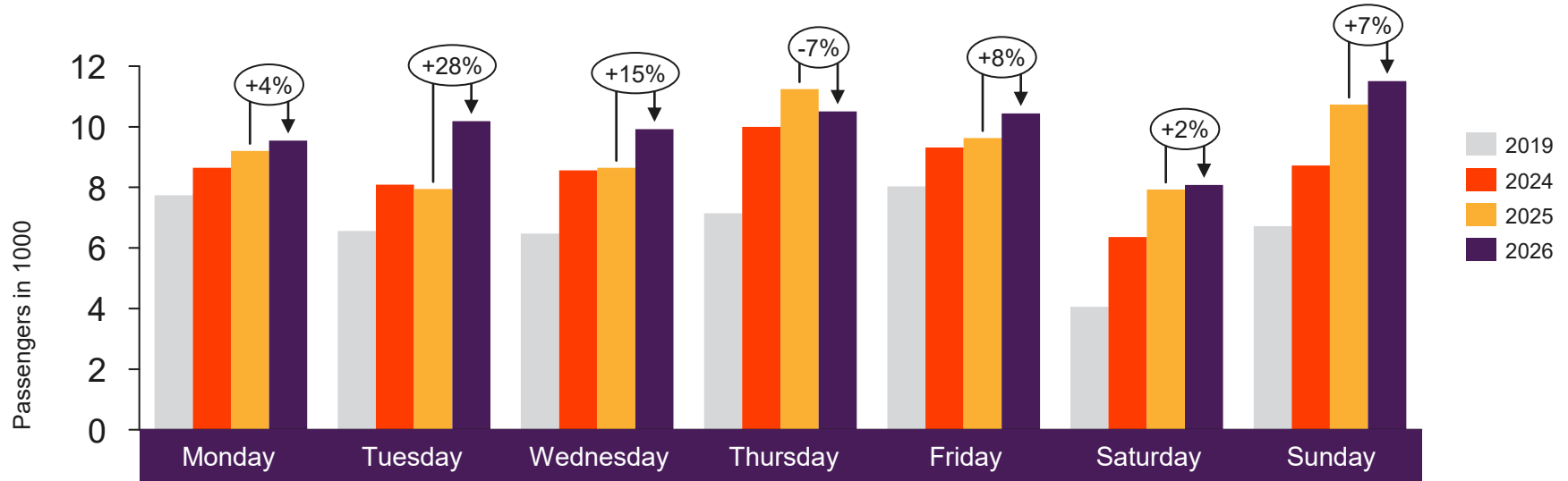


Passengers TRD domestic per week

The change is measured against the same week last year



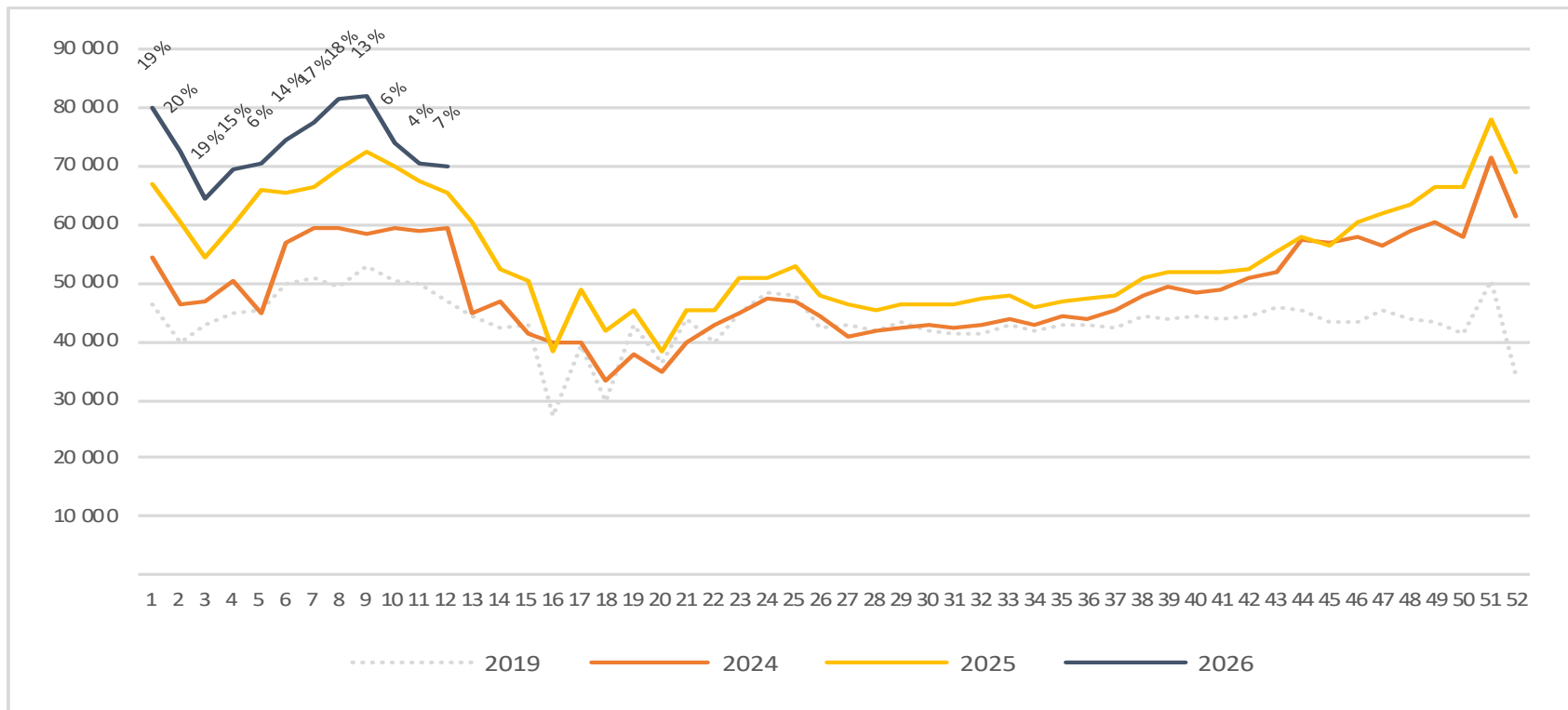
Passengers TOS total per day week 12



2019	7 738	6 558	6 475	7 144	8 035	4 061	6 720
2024	8 645	8 093	8 560	9 992	9 319	6 362	8 724
2025	9 206	7 946	8 648	11 243	9 627	7 926	10 729
2026	9 542	10 181	9 921	10 506	10 444	8 077	11 508

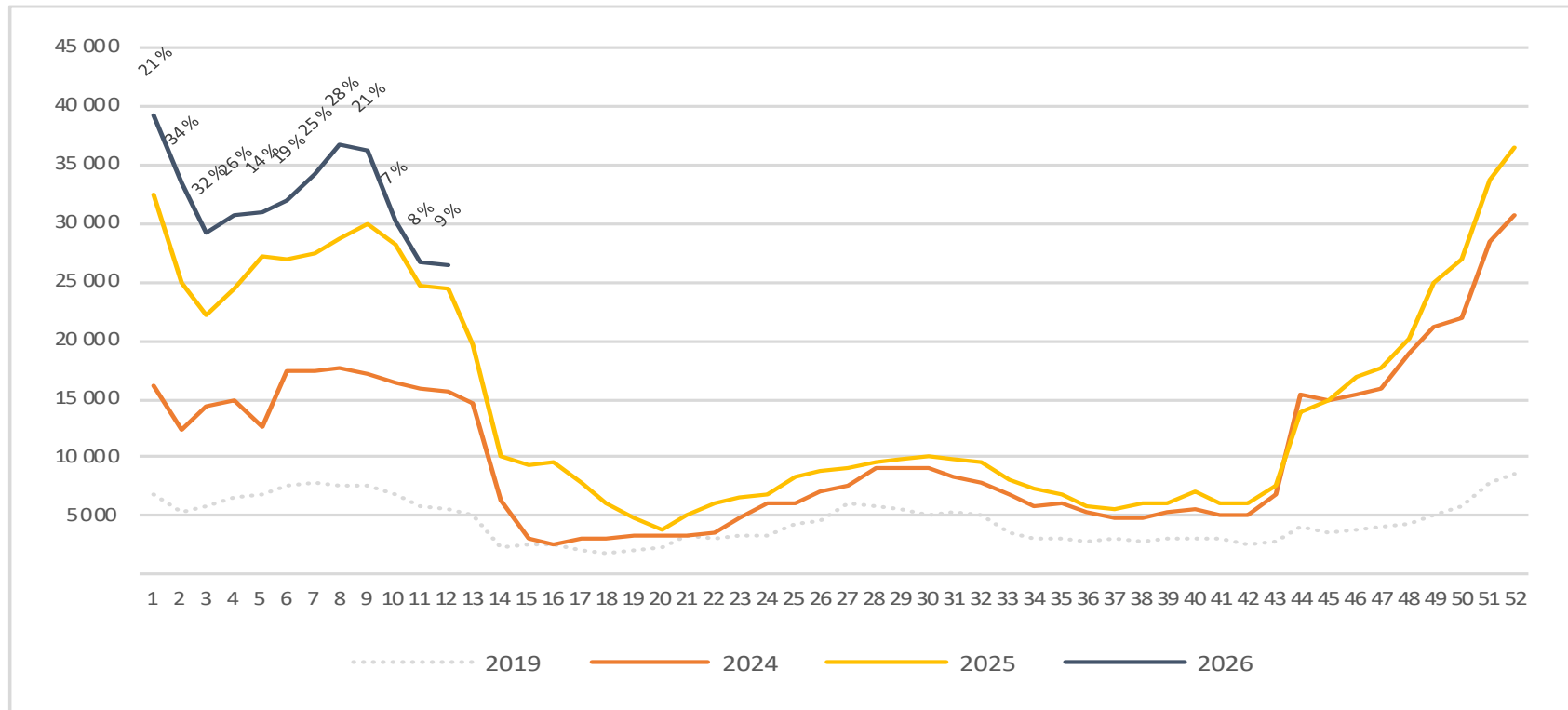
Passengers TOS total per week

The change is measured against the same week last year



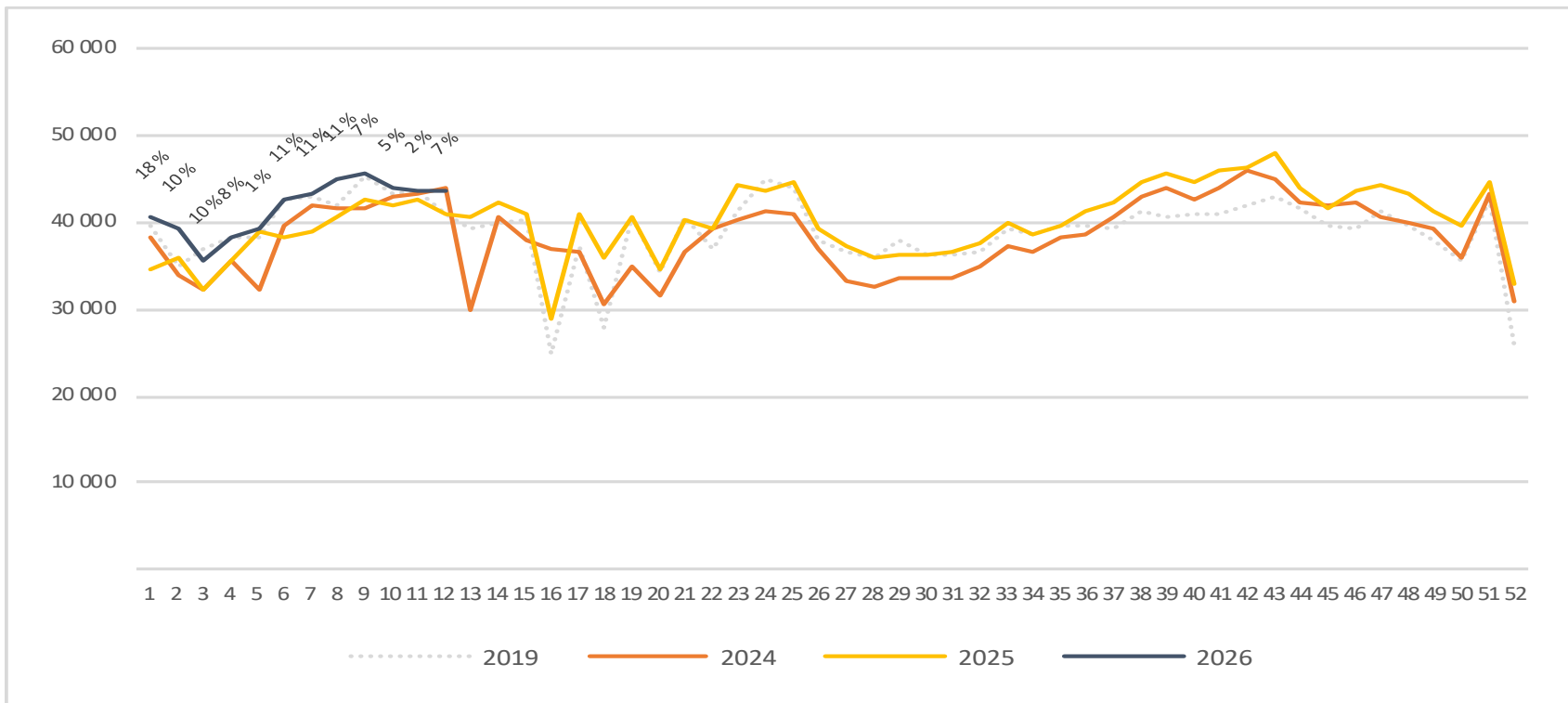
Passengers TOS international per week

The change is measured against the same week last year



Passengers TOS domestic per week

The change is measured against the same week last year



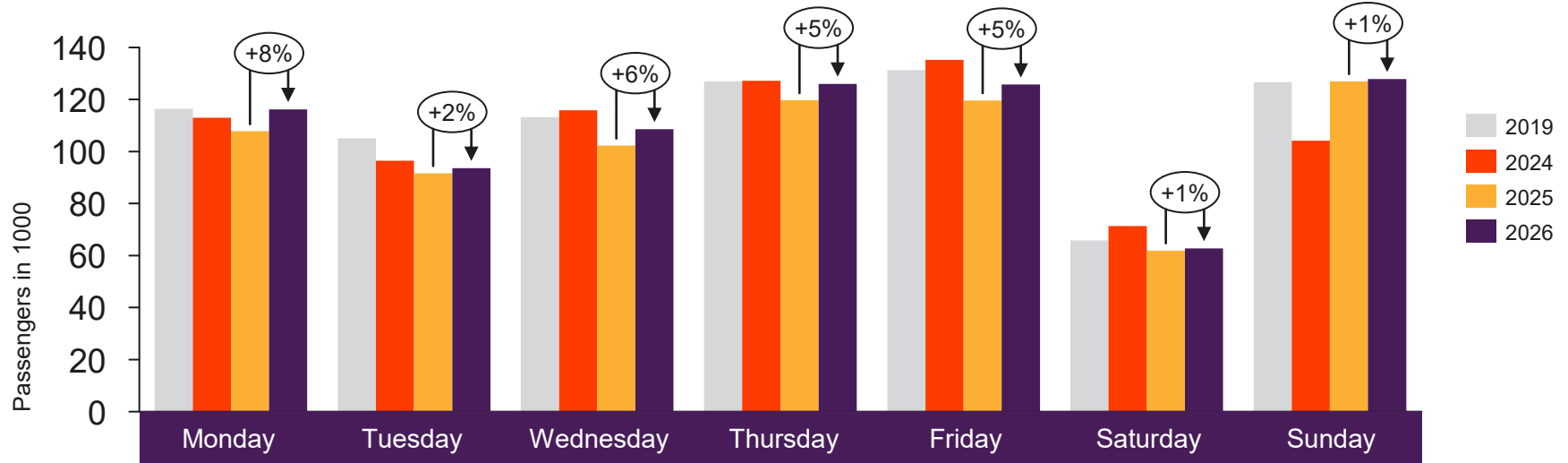


[Return to content page](#)

Top 4 airports

Total passenger numbers from Oslo, Bergen, Stavanger and Trondheim

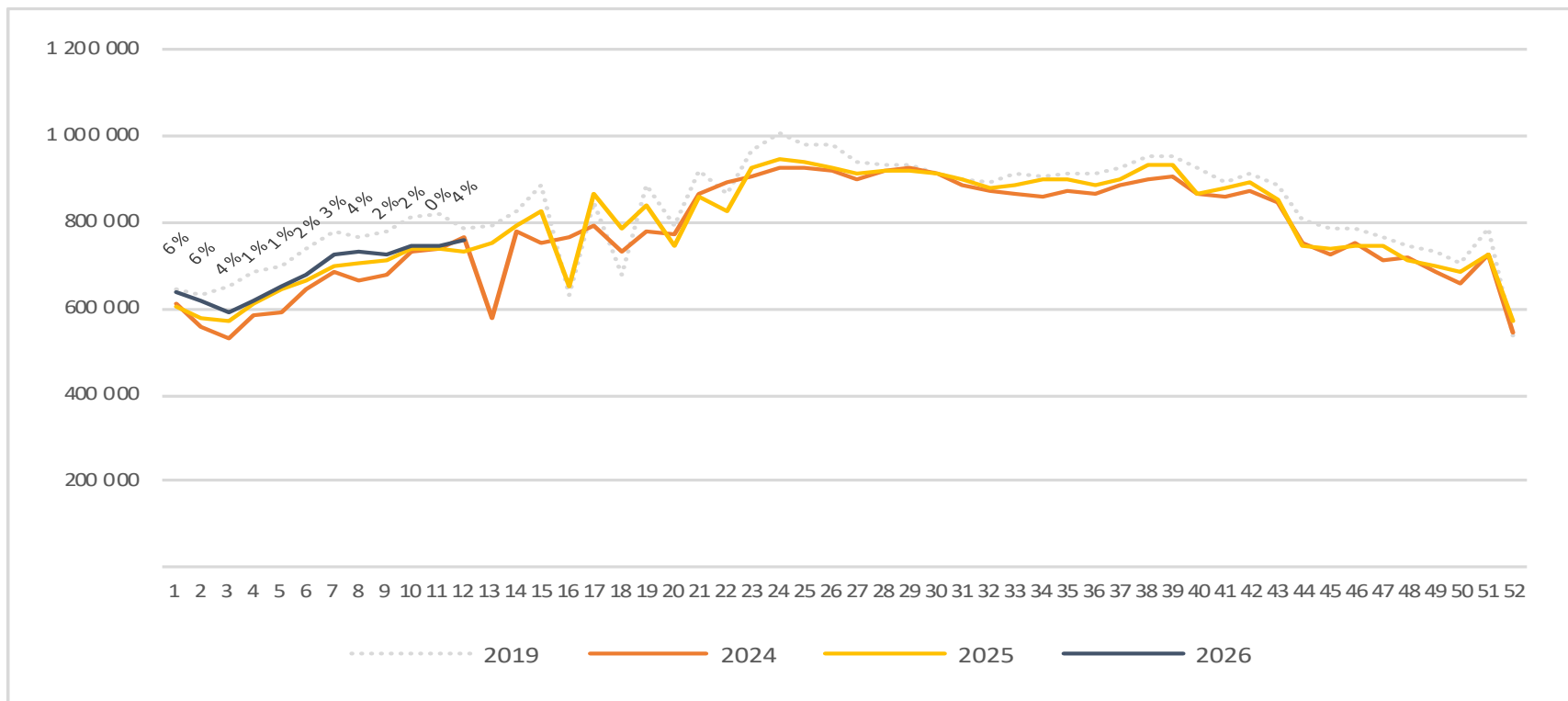
Passengers top 4 airports total per day week 12



	Monday	Tuesday	Wednesday	Thursday	Friday	Saturday	Sunday
2019	116 382	105 048	113 239	126 930	131 268	65 789	126 664
2024	112 929	96 487	115 861	127 183	135 233	71 395	104 165
2025	107 750	91 664	102 268	119 725	119 637	61 917	127 024
2026	116 222	93 585	108 558	126 012	125 707	62 785	127 847

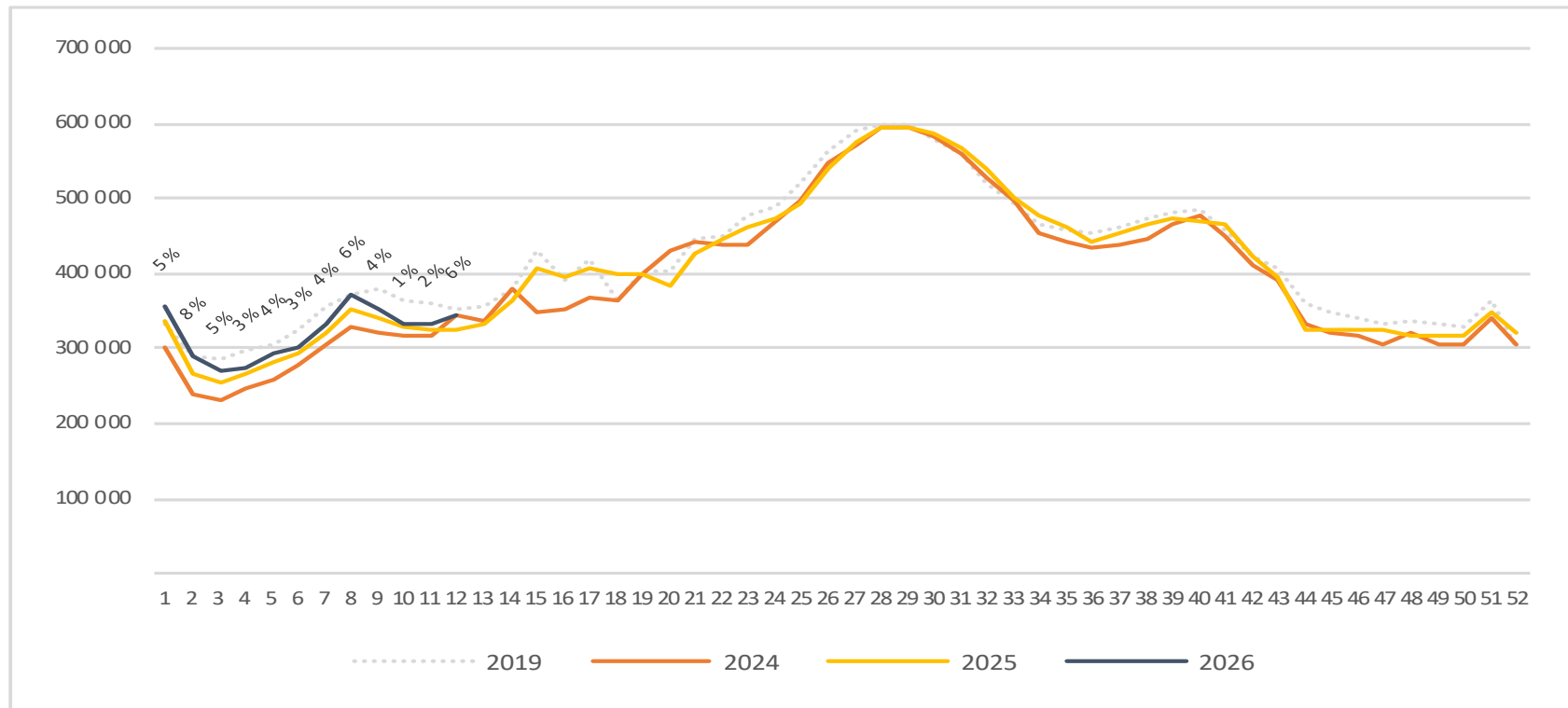
Passengers top 4 airports total per week

The change is measured against the same week last year



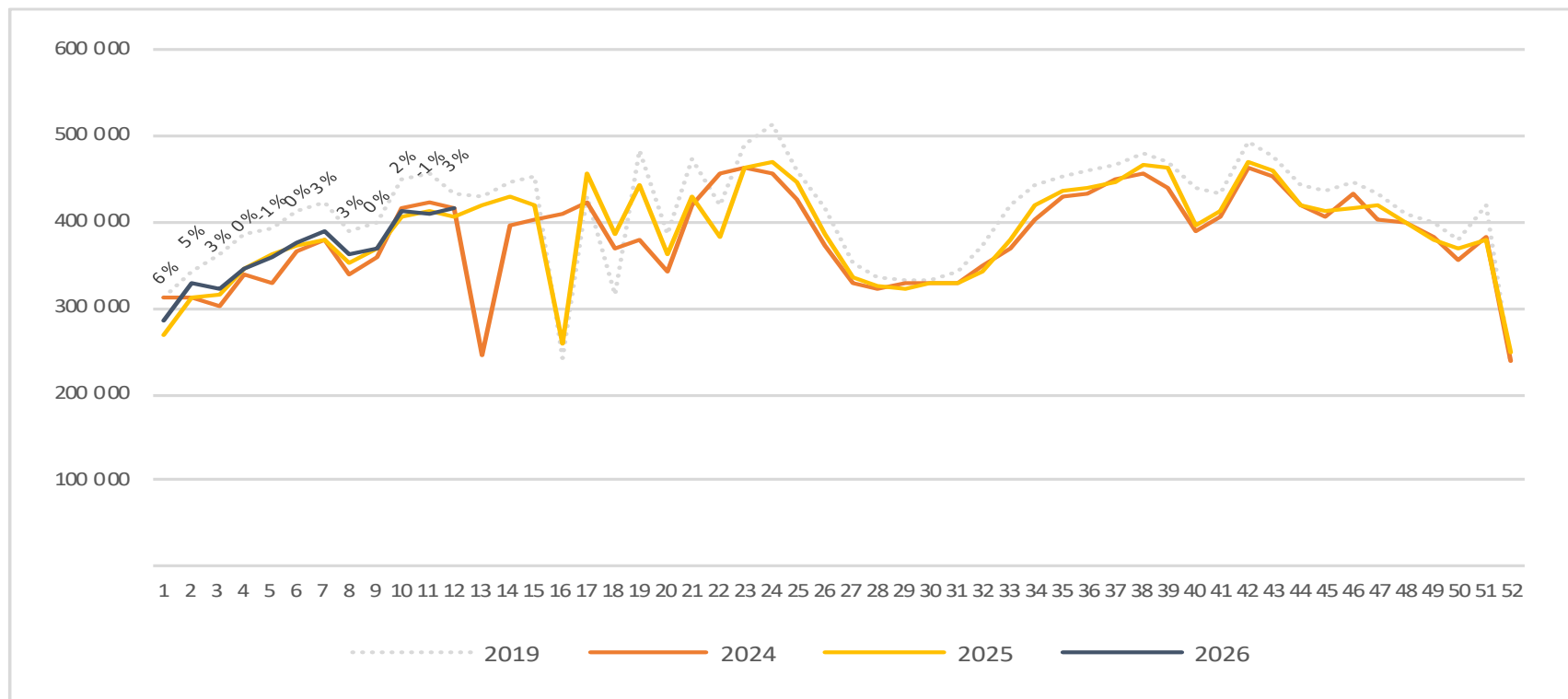
Passengers top 4 airports international per week

The change is measured against the same week last year



Passengers top 4 airports domestic per week

The change is measured against the same week last year



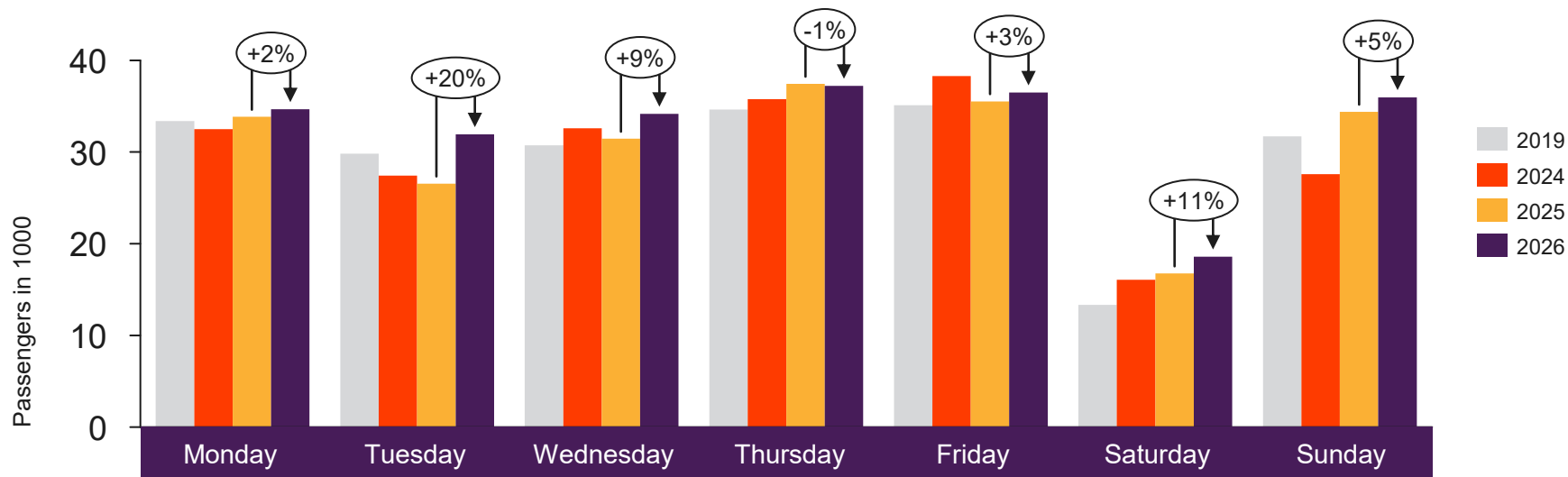


[Return to content page](#)

Regional and local airports

Total passenger numbers from Alta, Andenes, Bardufoss, Berlevåg, Bodø, Brønnøysund, Båtsfjord, Florø, Førde, Hammerfest, Harstad/Narvik, Hasvik, Honningsvåg, Kirkenes, Kristiansand, Kristiansund, Lakselv, Leknes, Mehamn, Mo i Rana, Molde, Mosjøen, Namsos, Røros, Rørvik, Røst, Sandane, Sandnessjøen, Sogndal, Stokmarknes, Svalbard, Svolvær, Sørkjosen, Tromsø, Vadsø, Vardø, Værøy, Ørsta-Volda and Ålesund

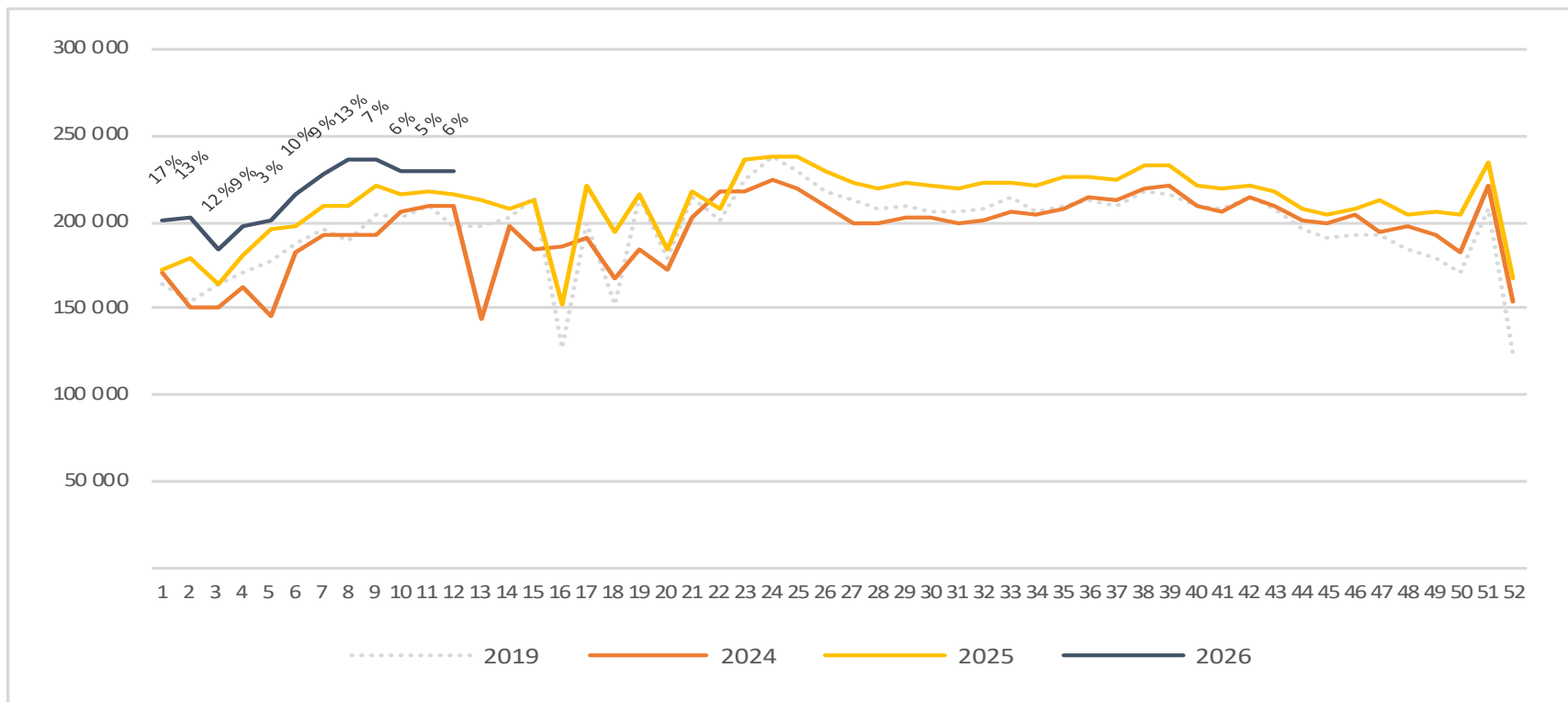
Passengers Regional and local airports total per day week 12



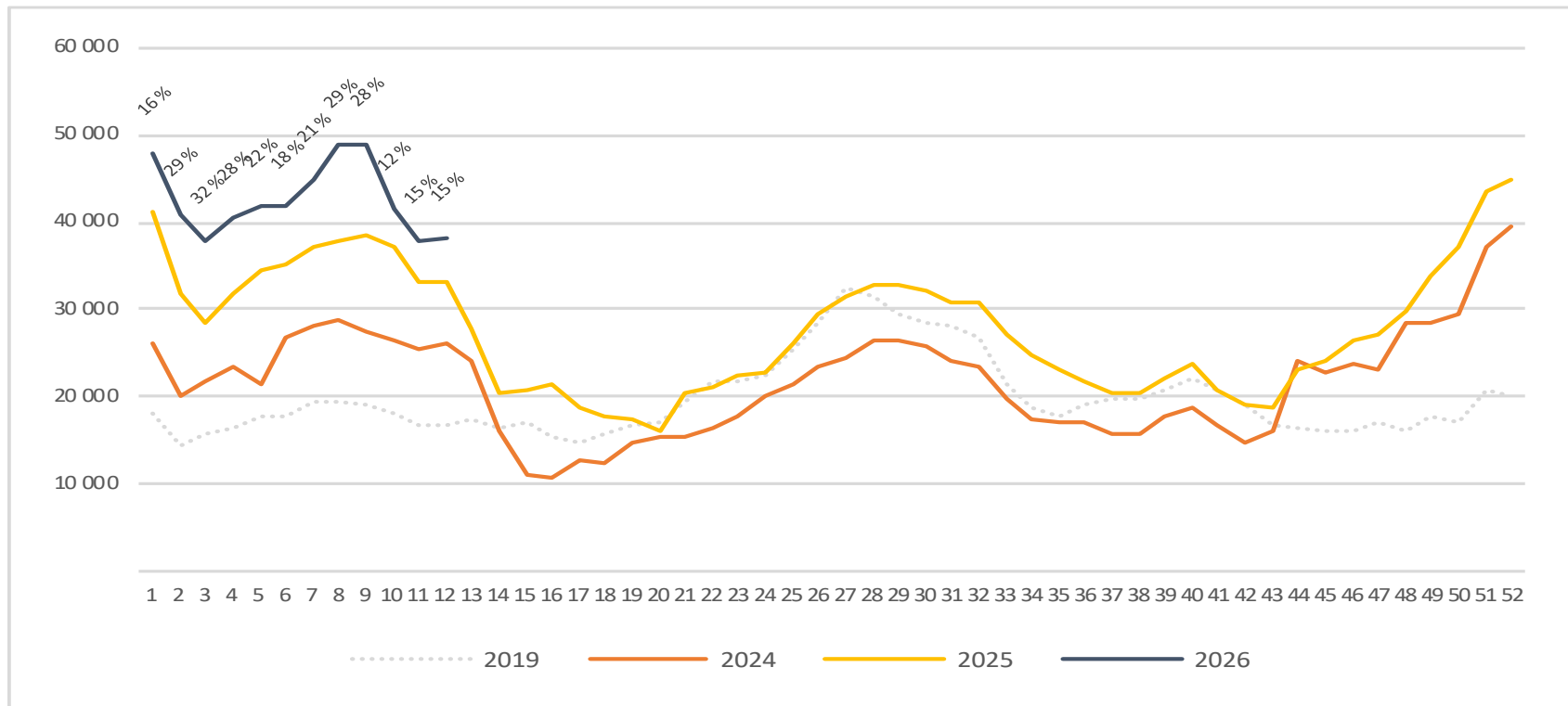
2019	33 394	29 834	30 732	34 648	35 127	13 335	31 714
2024	32 486	27 438	32 597	35 761	38 283	16 076	27 580
2025	33 841	26 555	31 456	37 445	35 536	16 752	34 390
2026	34 666	31 948	34 162	37 225	36 505	18 599	35 955

Passengers Regional and local airports total per week

The change is measured against the same week last year

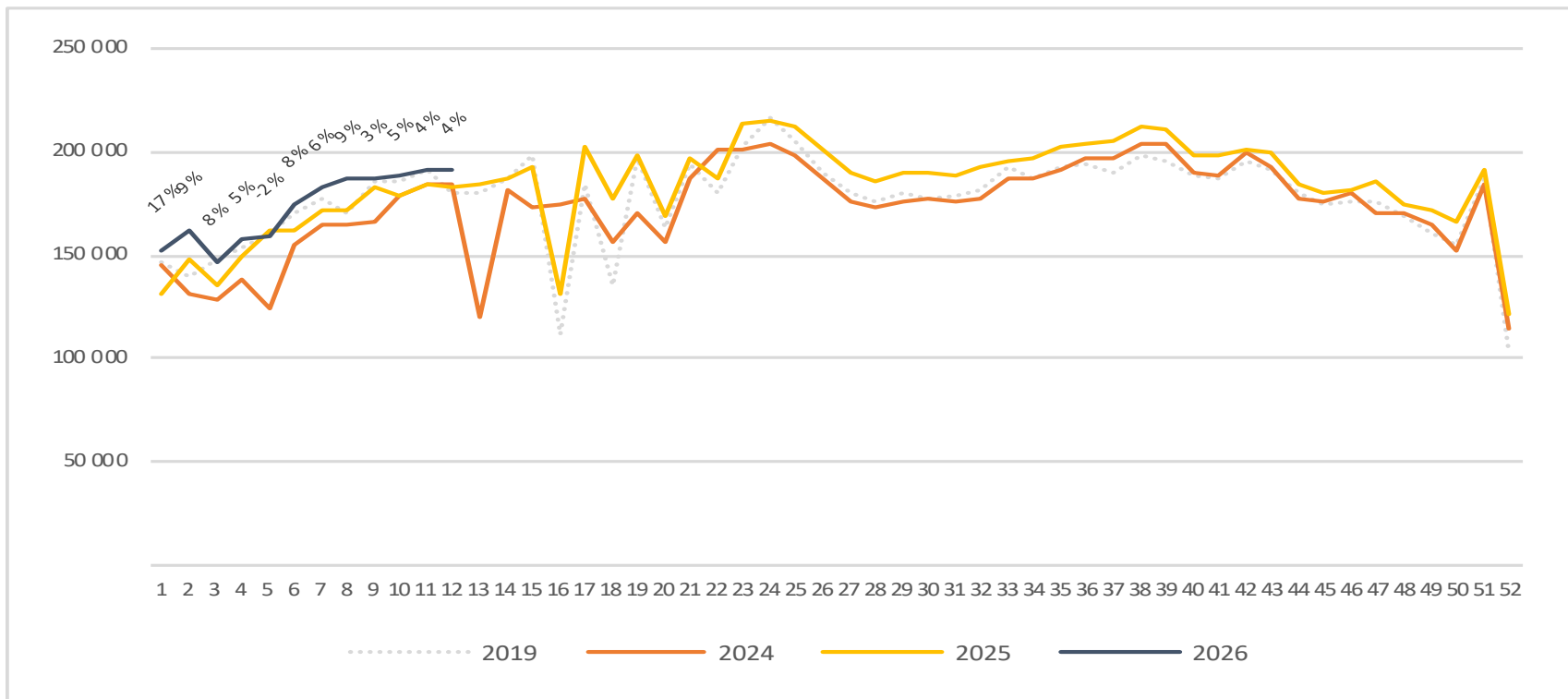


Passengers Regional and local airports international per week



Passengers Regional and local airports domestic per week

The change is measured against the same week last year



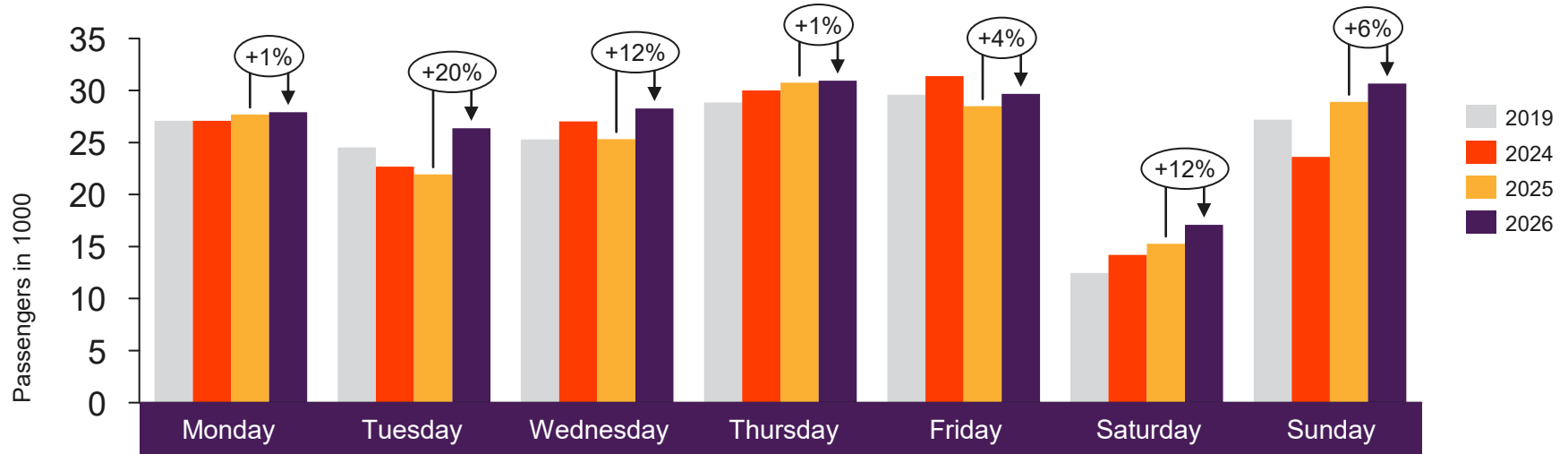


[Return to content
page](#)

Regional airports

Total passenger numbers from Alta, Bodø, Harstad/Narvik, Kirkenes, Kristiansand, Kristiansund, Molde, Svalbard, Tromsø and Ålesund

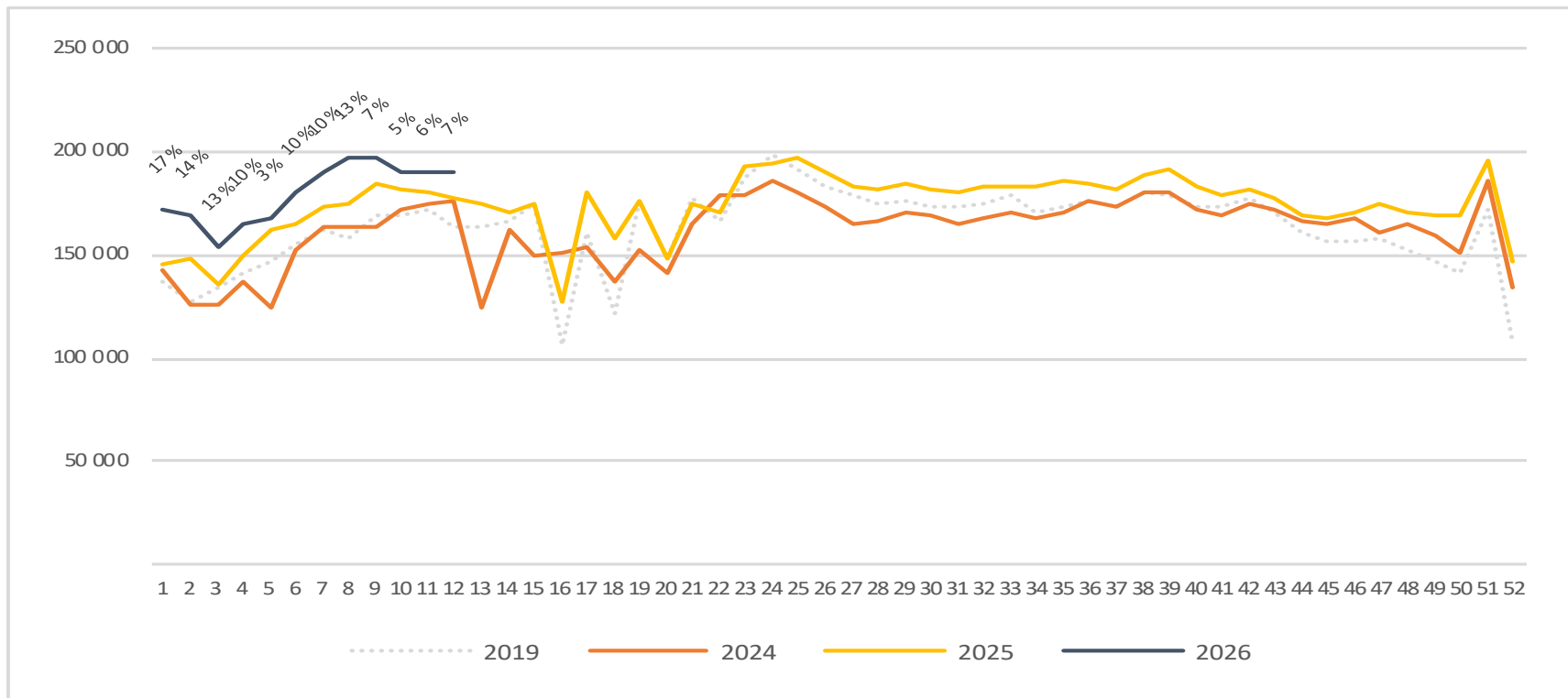
Passengers Regional airports total per day week 12



	Monday	Tuesday	Wednesday	Thursday	Friday	Saturday	Sunday
2019	27 090	24 538	25 286	28 863	29 604	12 455	27 191
2024	27 096	22 676	27 024	30 007	31 392	14 199	23 608
2025	27 693	21 941	25 329	30 758	28 485	15 279	28 915
2026	27 911	26 384	28 273	30 931	29 677	17 104	30 669

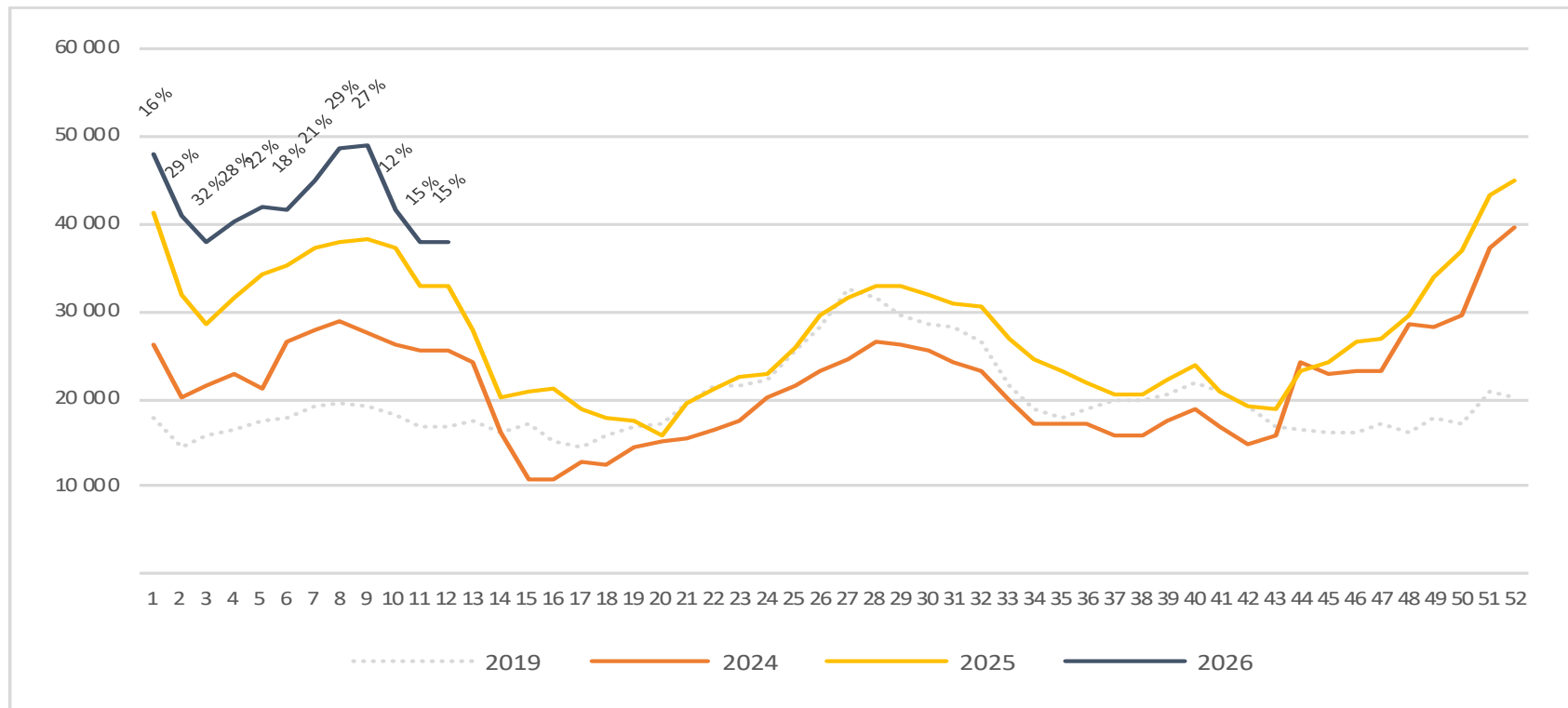
Passengers Regional airports total per week

The change is measured against the same week last year



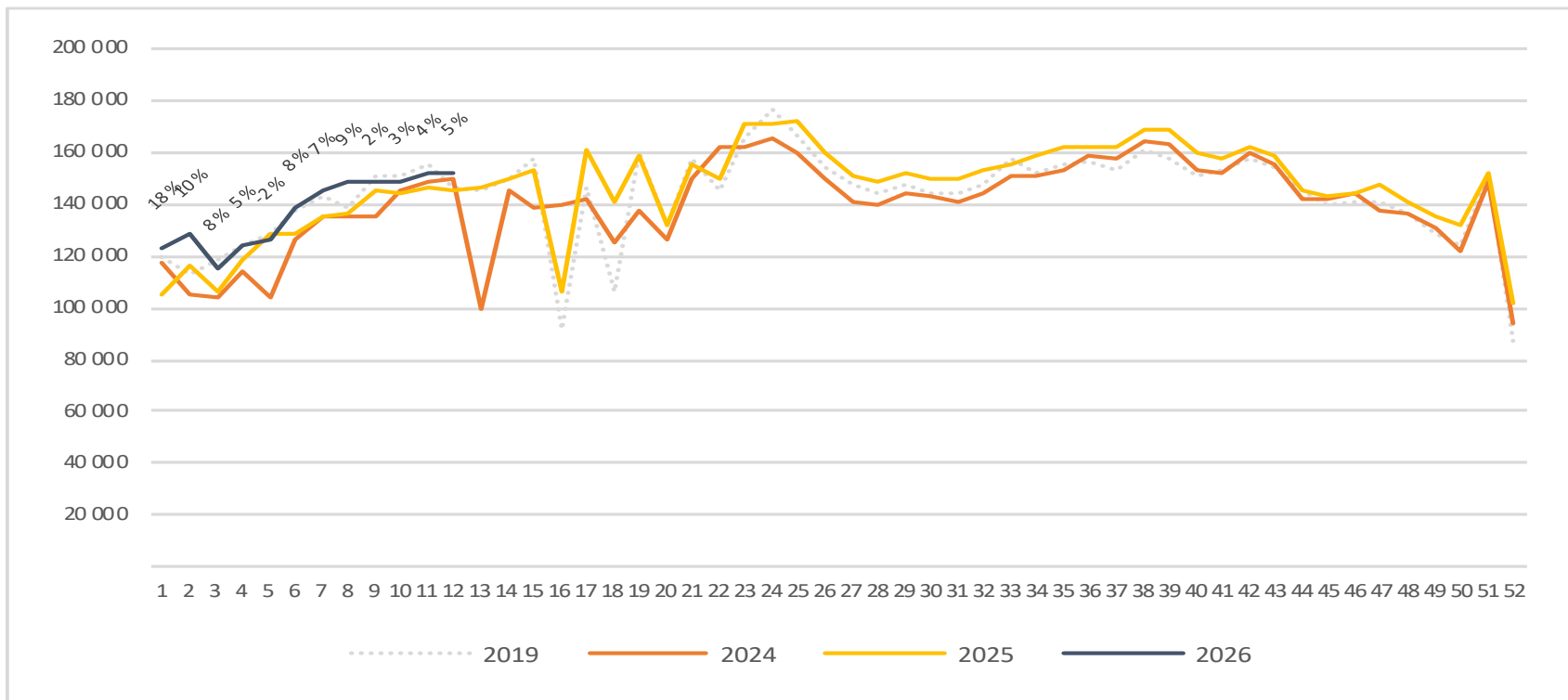
Passengers Regional airports international per week

The change is measured against the same week last year



Passengers Regional airports domestic per week

The change is measured against the same week last year



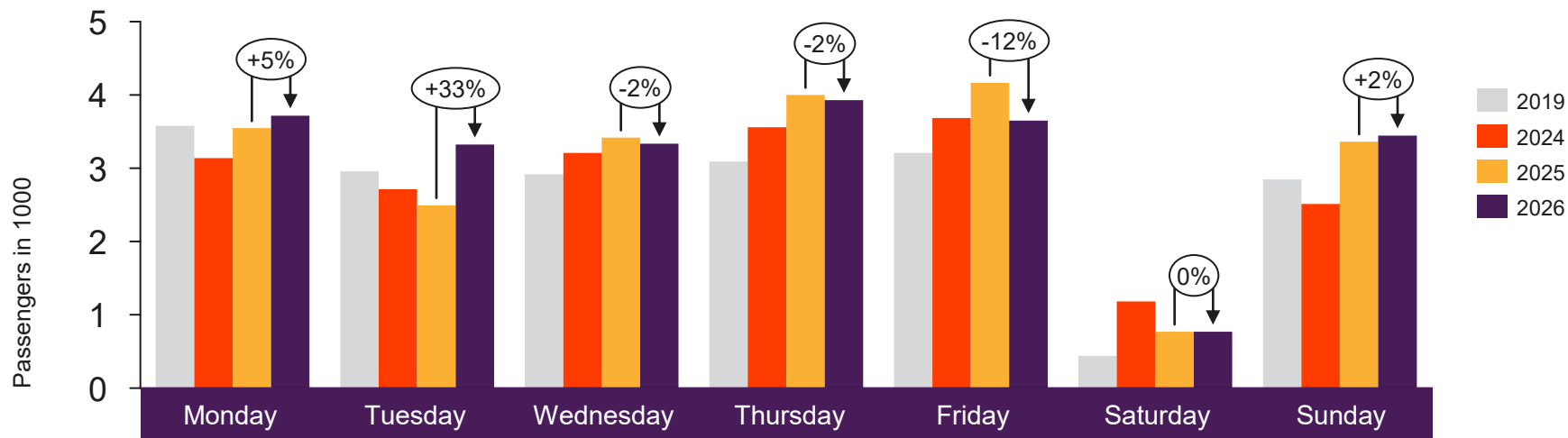


[Return to content
page](#)

Local Airports in Trøndelag and Nordland (Local Mid airports)

Total passenger numbers from Andenes, Bardufoss, Brønnøysund, Leknes, Mo i Rana, Mosjøen, Namsos, Rørvik, Røst, Sandnessjøen, Stokmarknes, Svolvær and Værøy

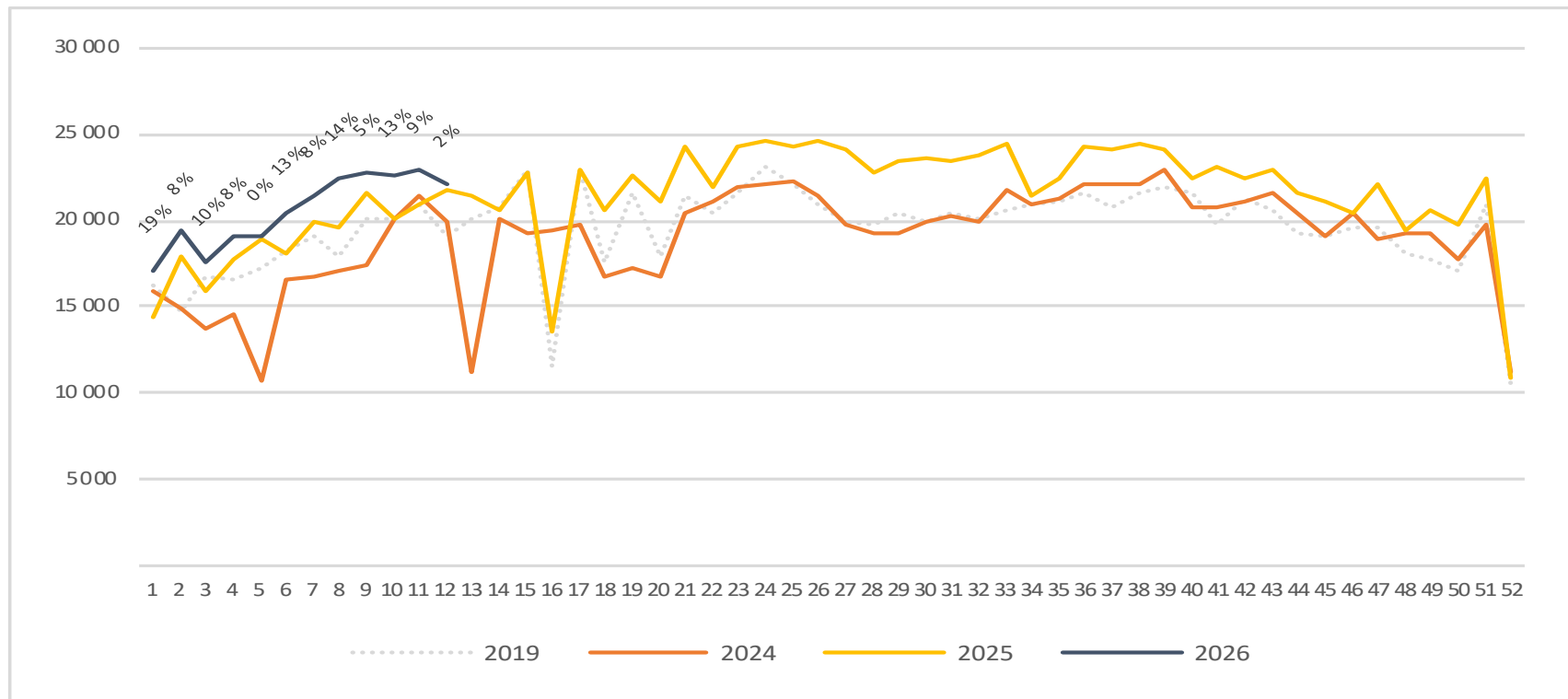
Passengers Local Mid airports total per day week 12



	Monday	Tuesday	Wednesday	Thursday	Friday	Saturday	Sunday
2019	3 578	2 958	2 919	3 091	3 208	439	2 846
2024	3 137	2 713	3 209	3 558	3 685	1 182	2 511
2025	3 546	2 494	3 419	4 001	4 166	769	3 364
2026	3 718	3 321	3 334	3 930	3 651	768	3 446

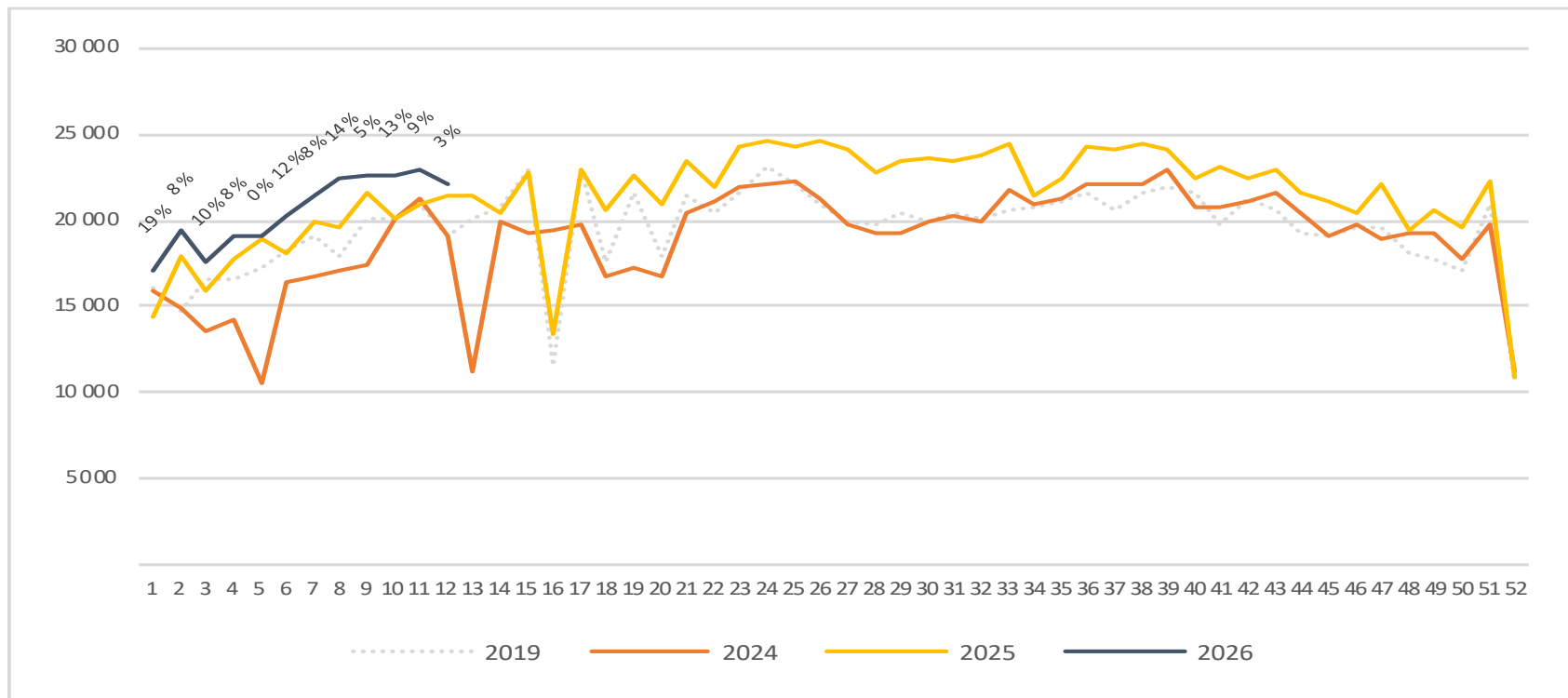
Passengers Local Mid airports total per week

The change is measured against the same week last year



Passengers Local Mid airports domestic per week

The change is measured against the same week last year



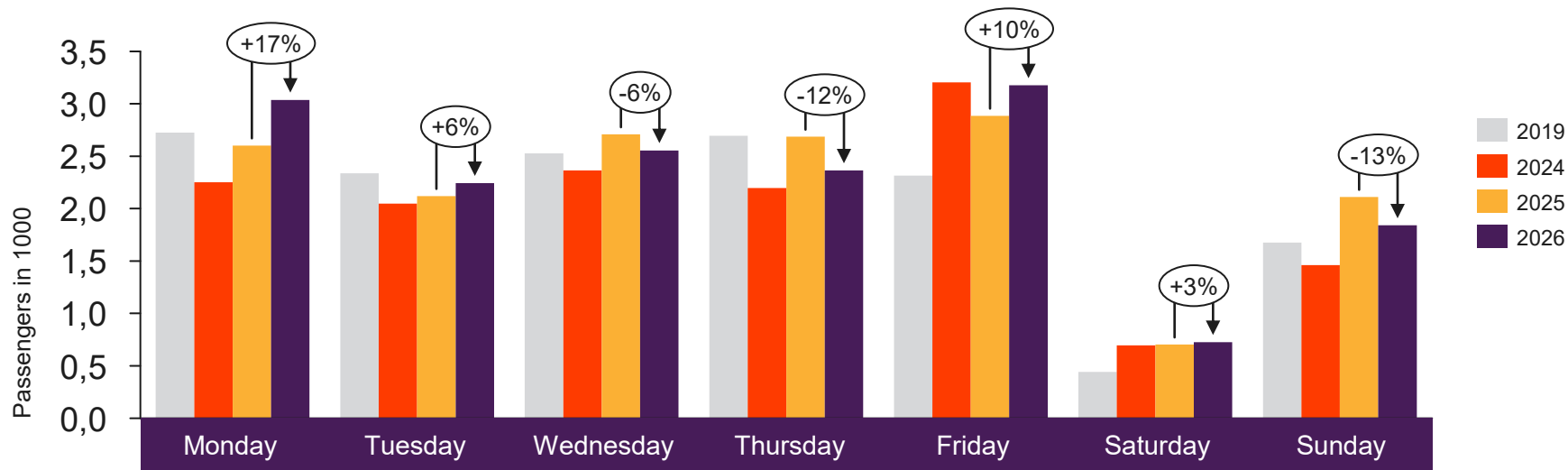


[Return to content
page](#)

Local airports on the West coast and in Troms and Finnmark

Total passenger numbers from Berlevåg, Båtsfjord, Florø, Førde, Hammerfest, Hasvik, Honningsvåg, Lakselv, Mehamn, Røros, Sandane, Sogndal, Sørkjosen, Vadsø, Vardø and Ørsta-Volda

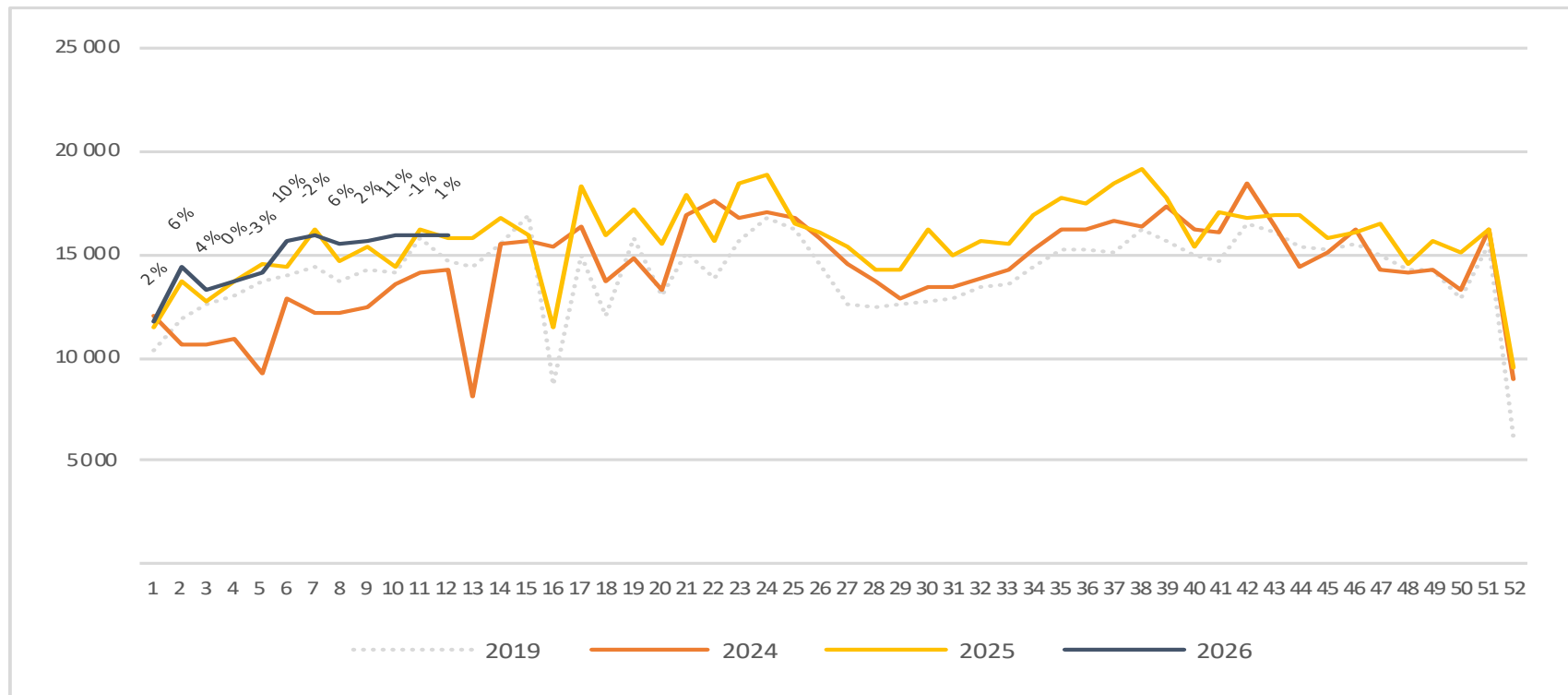
Passengers local airports on the West coast and in Troms and Finnmark total per day week 12



2019	2 726	2 338	2 527	2 694	2 315	441	1 677
2024	2 253	2 049	2 364	2 196	3 206	695	1 461
2025	2 602	2 120	2 708	2 686	2 885	704	2 111
2026	3 037	2 243	2 555	2 364	3 177	727	1 840

Passengers local airports on the West coast and in Troms and Finnmark total per week

The change is measured against the same week last year



Passengers local airports on the West coast and in Troms and Finnmark domestic per week

The change is measured against the same week last year

