



Passenger numbers per week

Preliminary figures

- The figures for the previous week are preliminary. It takes some time for all passenger numbers to be reported, so the figures for the previous week may be lower than the final figures.
- The figures are from SIA, Avinor's traffic database.

Content

- Top 10 airports
- Avinor total
- Selected airports
- The 4 biggest airports
- Regional and local airports
 - Regional airports
 - Local airports in Trøndelag and Nordland
 - Local airports on the west coast of Norway and in Troms and Finnmark

Top 10 airports, total, week 10

Airport	2019	2024	2025	2026	2026 vs. 2025	
					Change	Change %
Oslo	532 758	468 642	469 368	479 935	10 567	2 %
Bergen	115 181	112 008	113 374	118 201	4 827	4 %
Trondheim	86 327	79 570	83 374	78 679	-4 695	-6 %
Tromsø	50 176	59 354	70 158	74 262	4 104	6 %
Stavanger	78 618	72 384	70 085	70 677	592	1 %
Bodø	32 188	32 864	36 817	35 574	-1 243	-3 %
Harstad/Narvik	14 904	15 224	16 025	18 414	2 389	15 %
Ålesund	21 594	19 178	17 137	18 086	949	6 %
Kristiansand	20 171	15 081	14 021	15 304	1 283	9 %
Alta	7 483	9 763	6 833	7 876	1 043	15 %

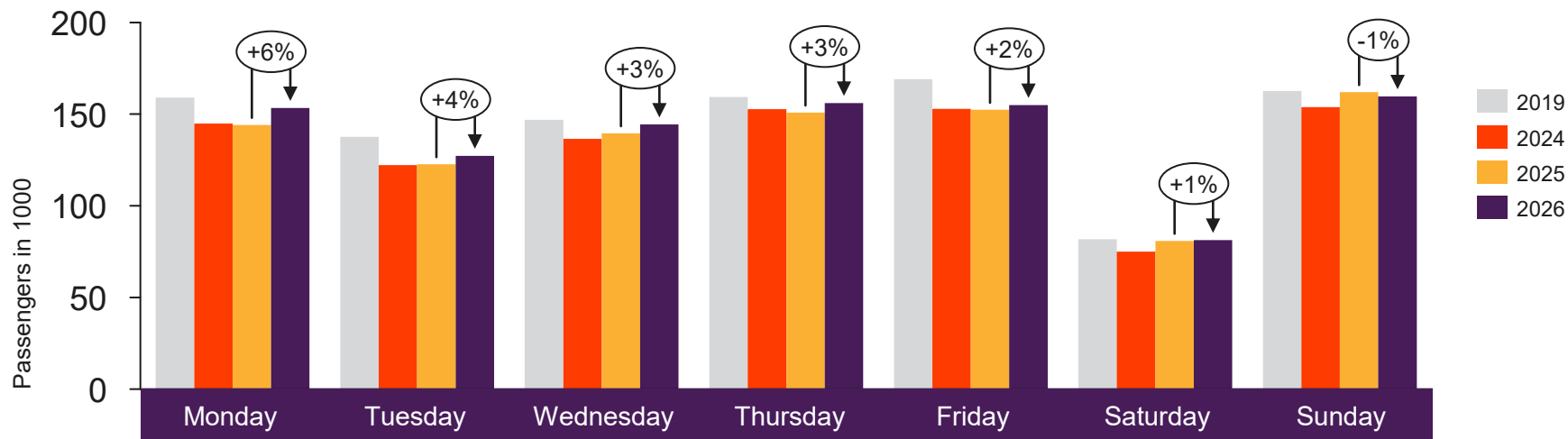


[Return to content
page](#)

Avinor total

Passenger numbers for all Avinor airports

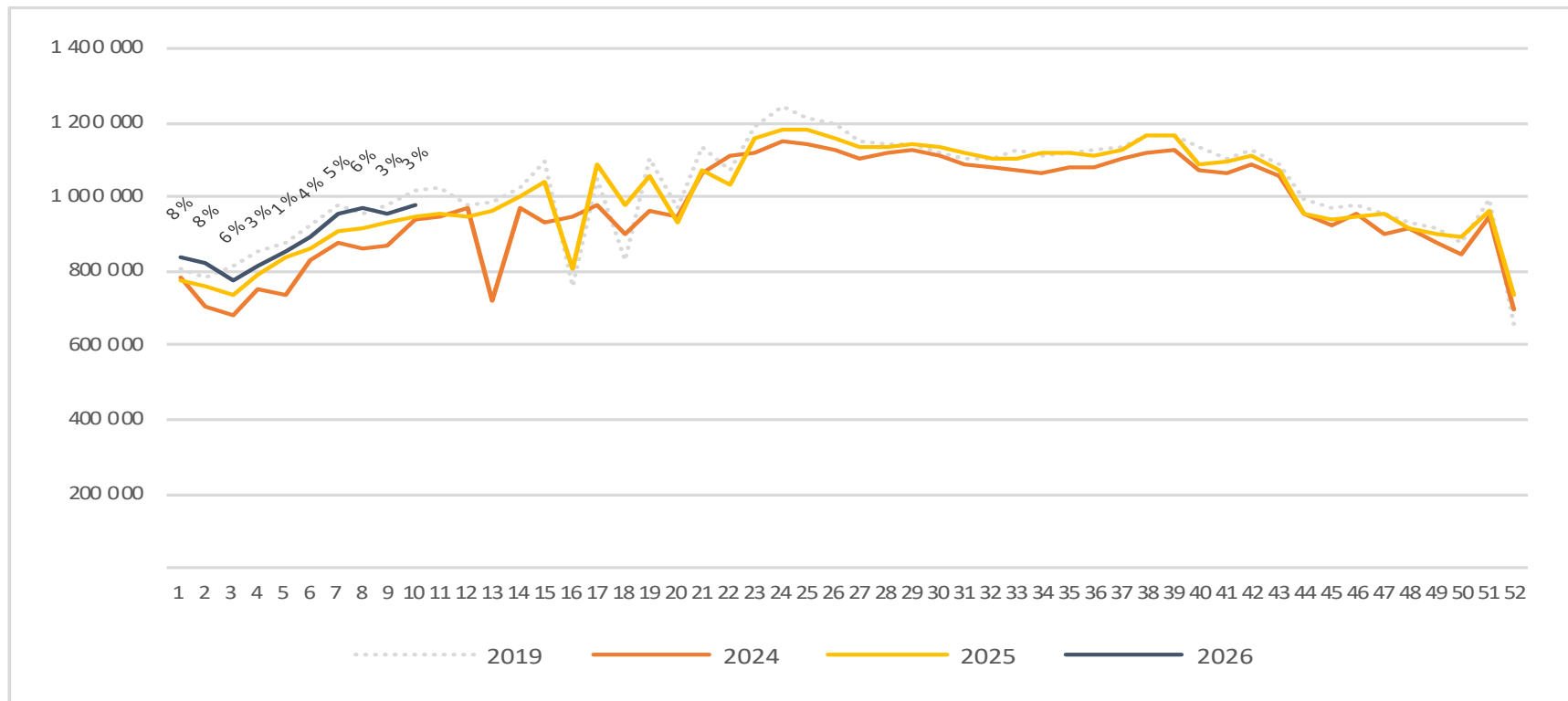
Passengers Avinor total per day week 10



2019	159 121	137 598	146 882	159 299	169 151	81 782	162 622
2024	144 917	122 160	136 512	152 759	152 911	75 018	153 845
2025	144 070	122 682	139 562	150 885	152 372	80 880	162 032
2026	153 317	127 263	144 339	156 110	154 979	81 348	159 748

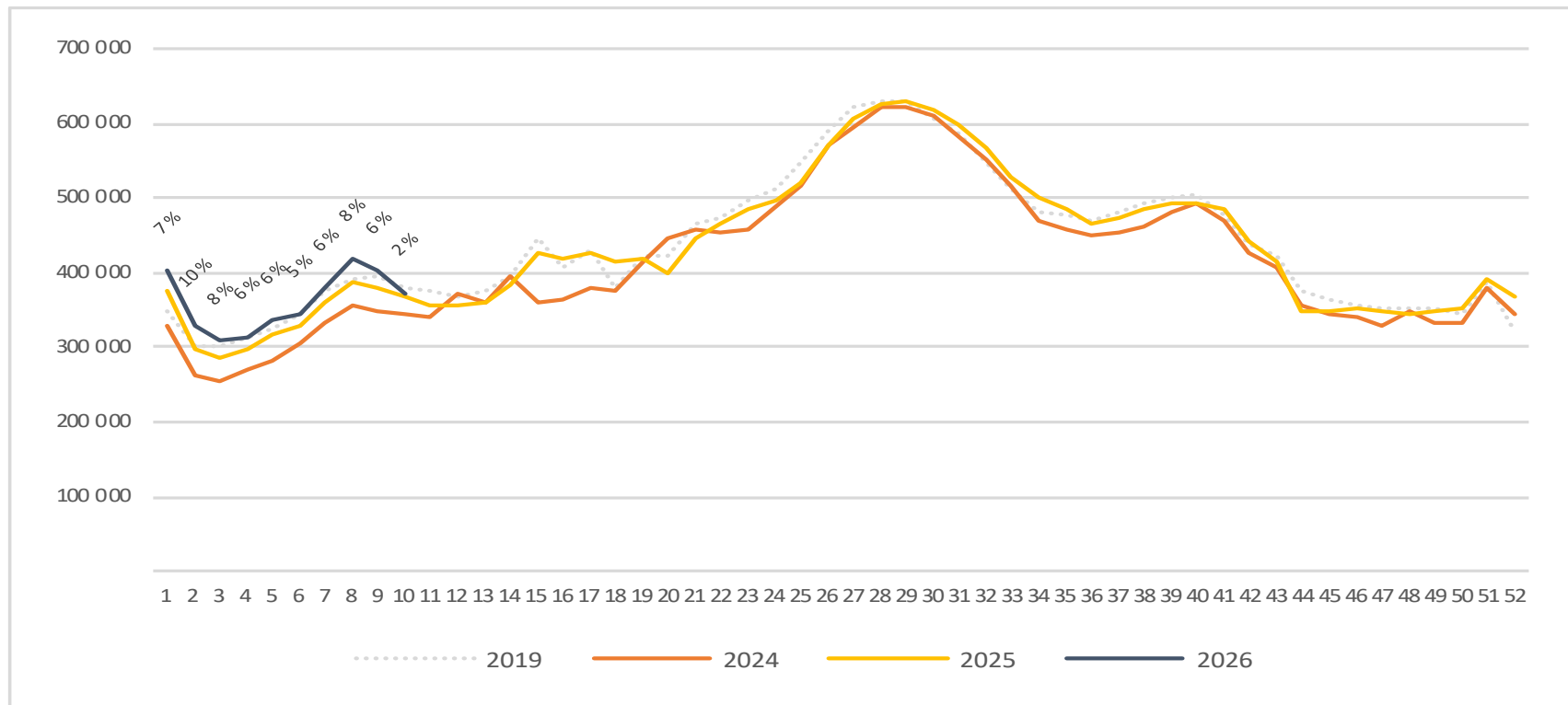
Passengers Avinor total per week

The change is measured against the same week last year



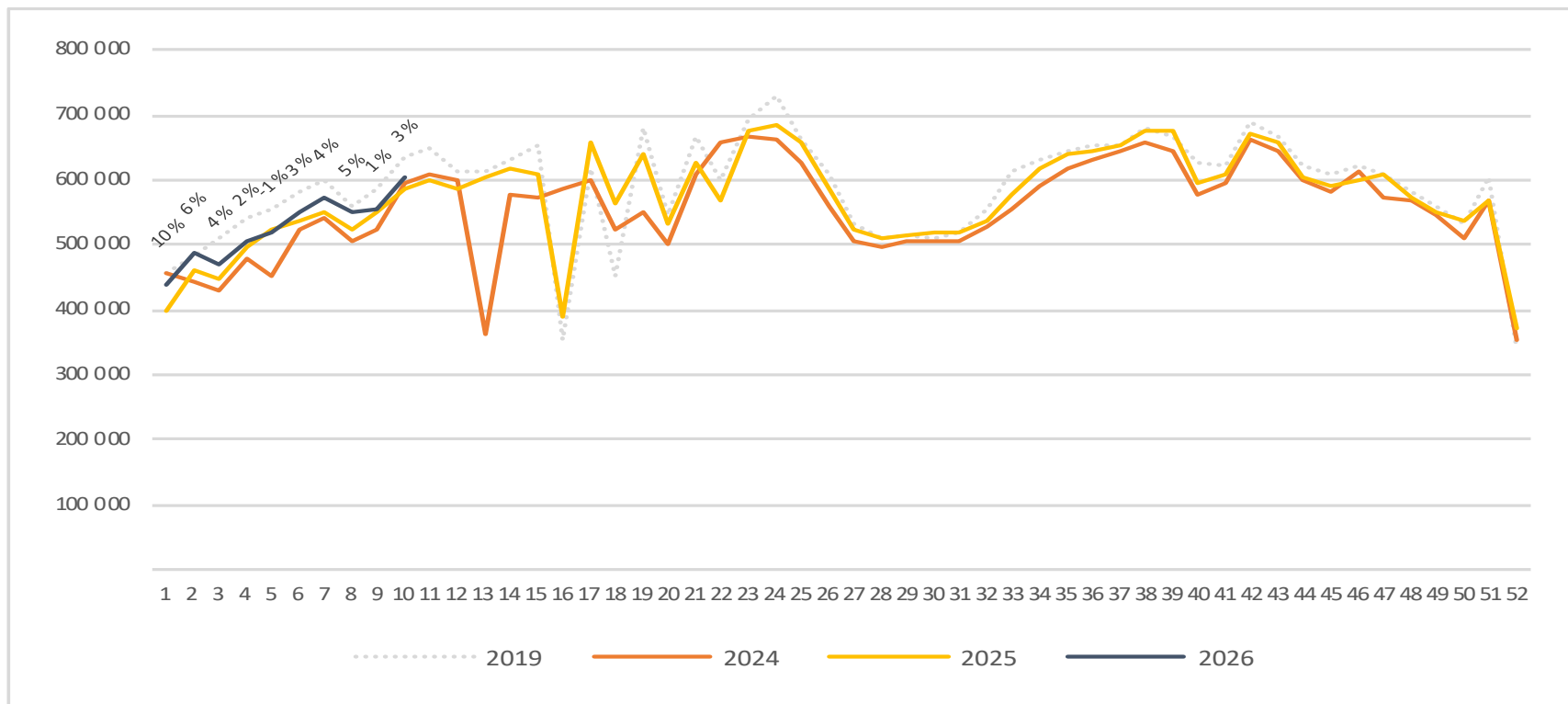
Passengers Avinor international per week

The change is measured against the same week last year



Passengers Avinor domestic per week

The change is measured against the same week last year

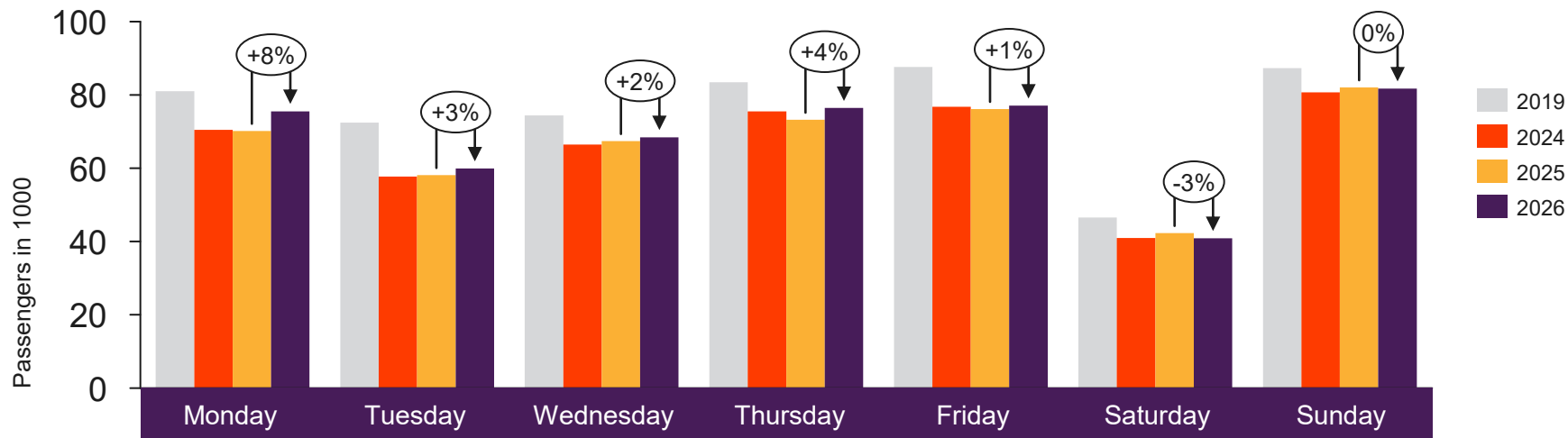




[Return to content page](#)

Selected airports

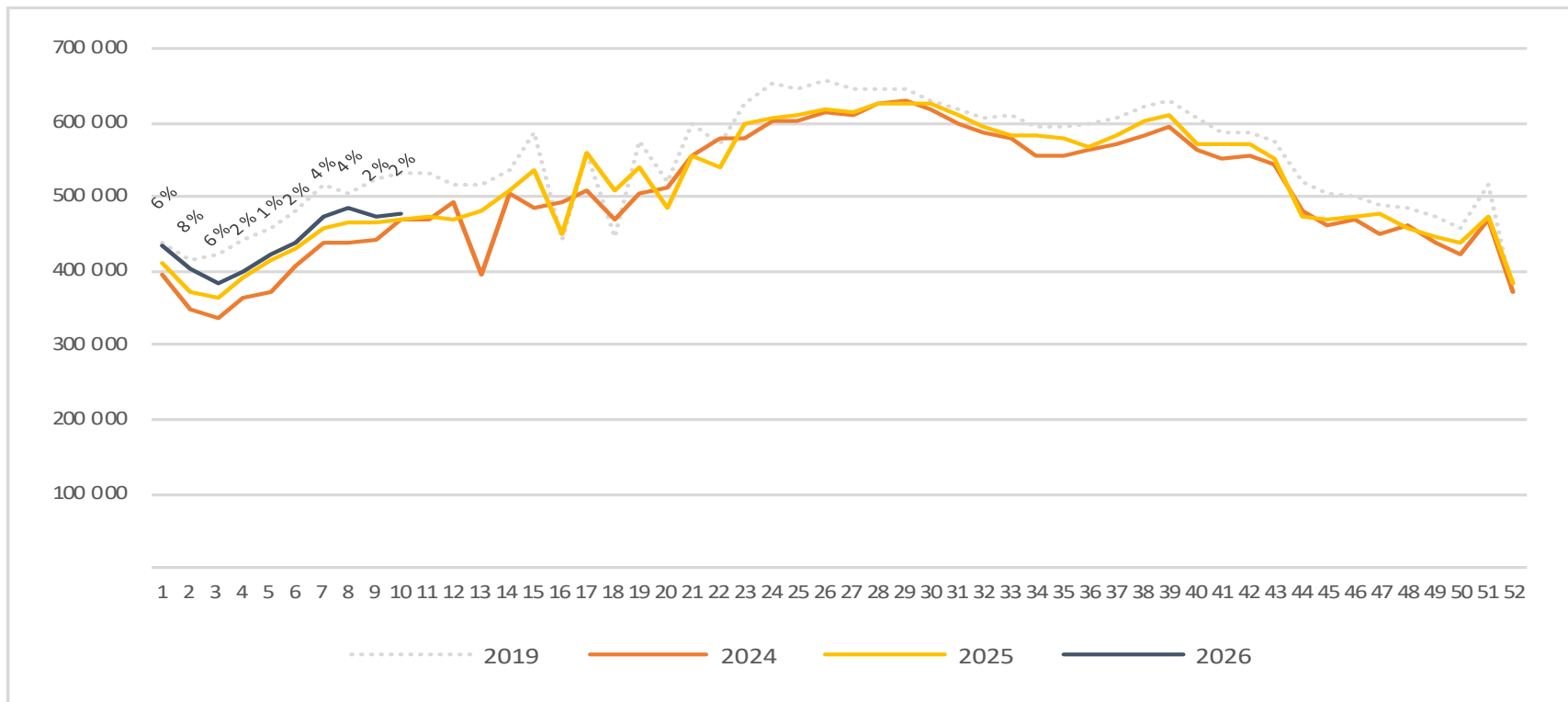
Passengers OSL total per day week 10



2019	81 008	72 420	74 399	83 429	87 663	46 539	87 300
2024	70 444	57 735	66 490	75 523	76 794	40 949	80 707
2025	70 163	58 117	67 403	73 207	76 130	42 289	82 059
2026	75 542	59 894	68 447	76 417	77 078	40 862	81 695

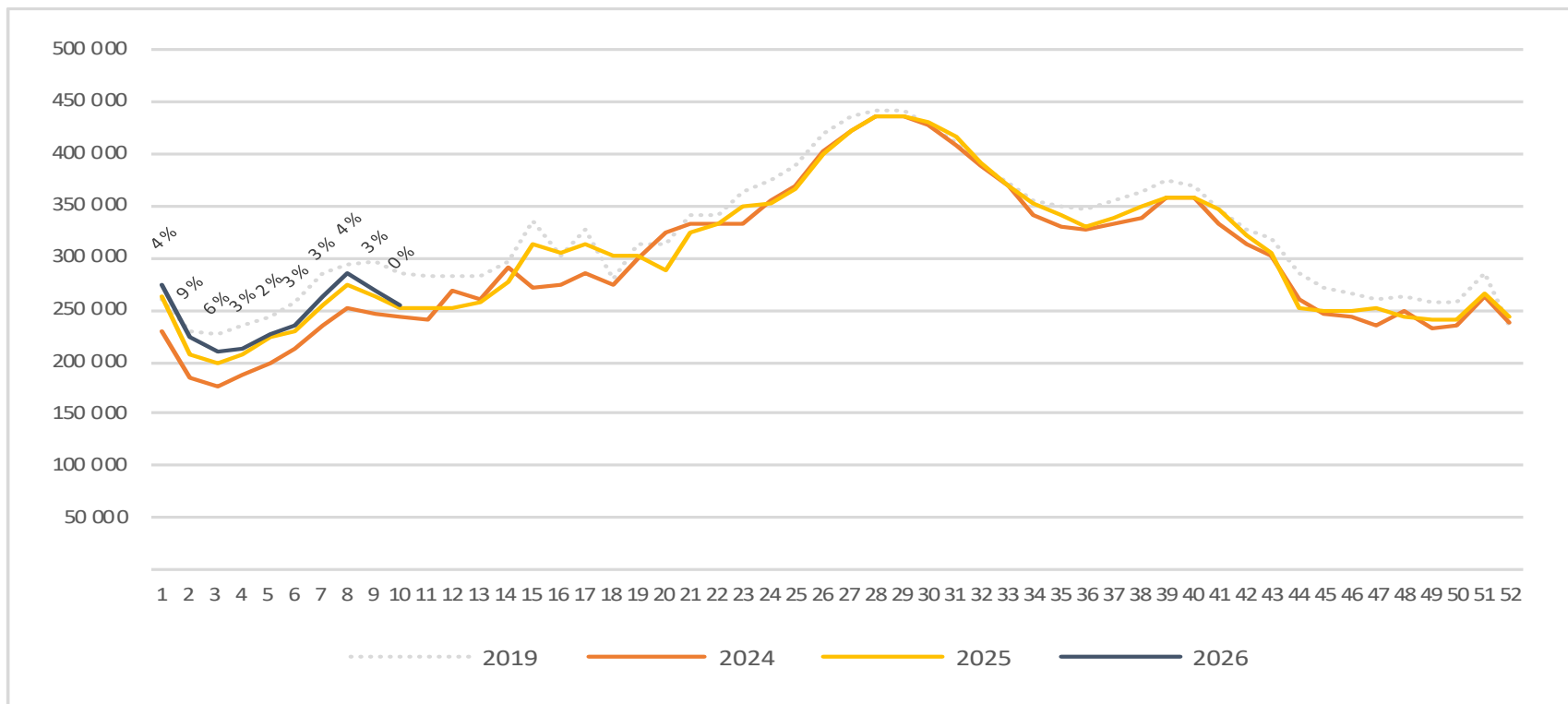
Passengers OSL total per week

The change is measured against the same week last year



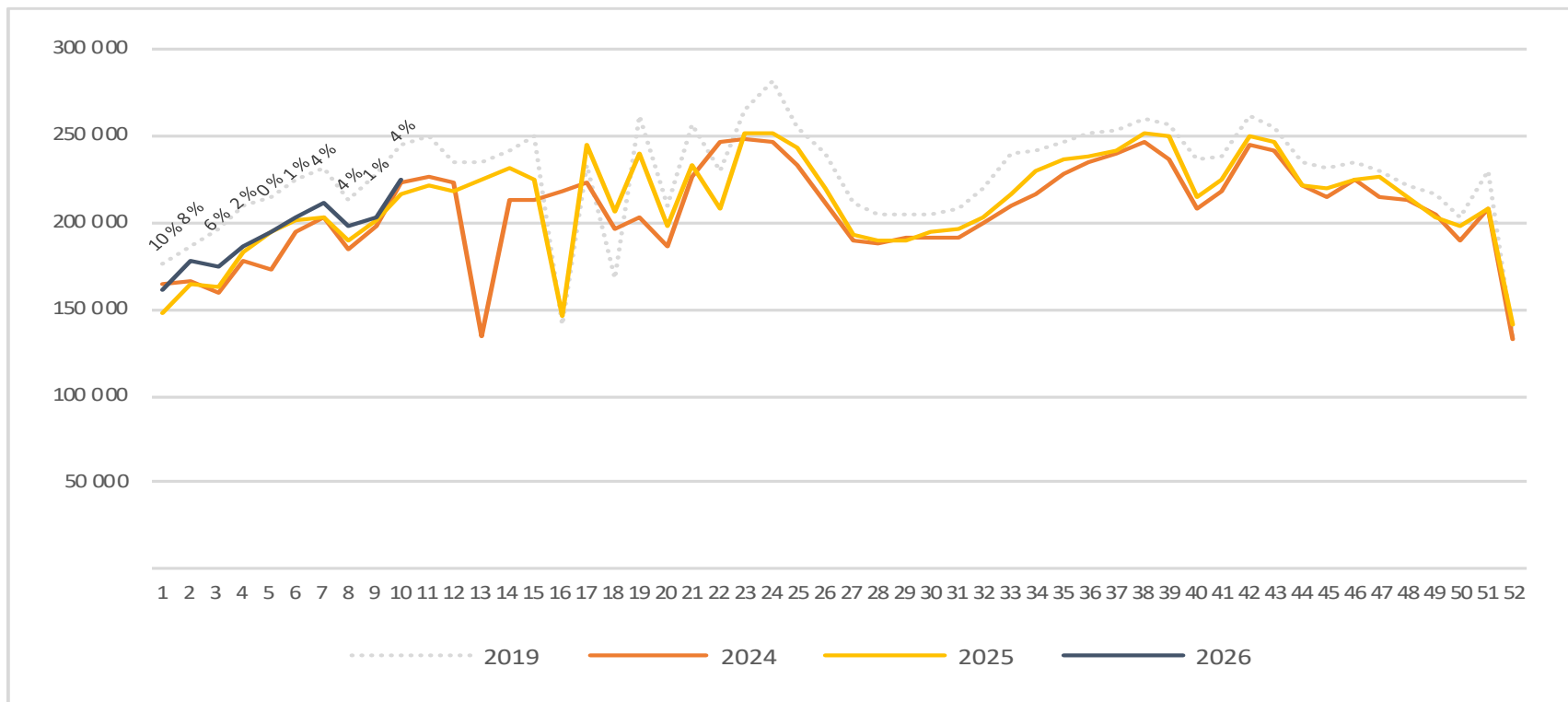
Passengers OSL international per week

The change is measured against the same week last year

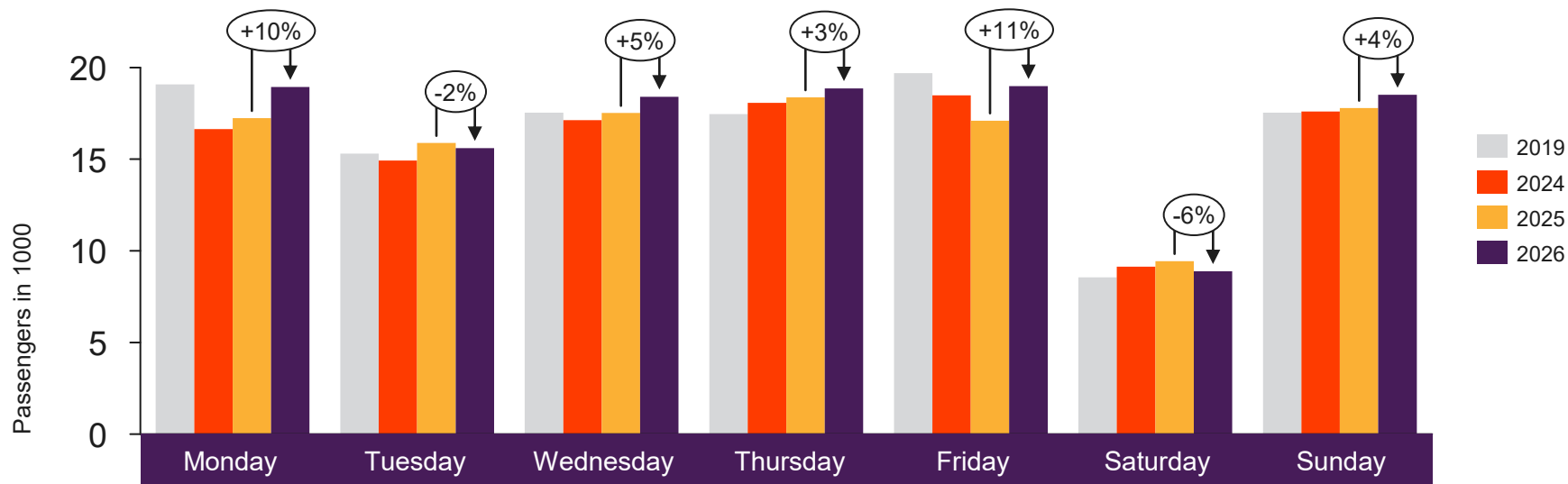


Passengers OSL domestic per week

The change is measured against the same week last year



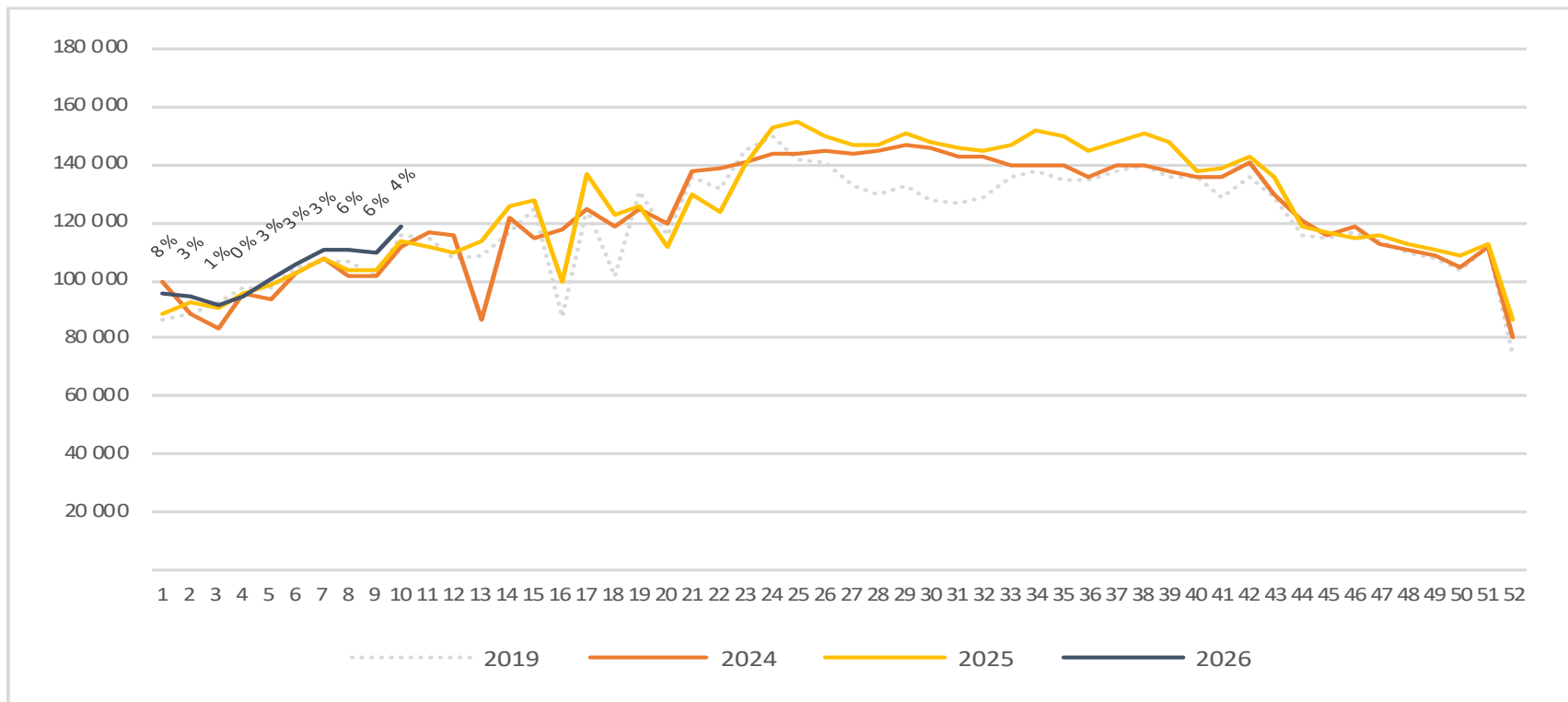
Passengers BGO total per day week 10



	Monday	Tuesday	Wednesday	Thursday	Friday	Saturday	Sunday
2019	19 080	15 302	17 536	17 467	19 698	8 559	17 539
2024	16 649	14 932	17 137	18 069	18 481	9 130	17 610
2025	17 246	15 882	17 524	18 375	17 108	9 440	17 799
2026	18 934	15 613	18 413	18 863	18 991	8 878	18 509

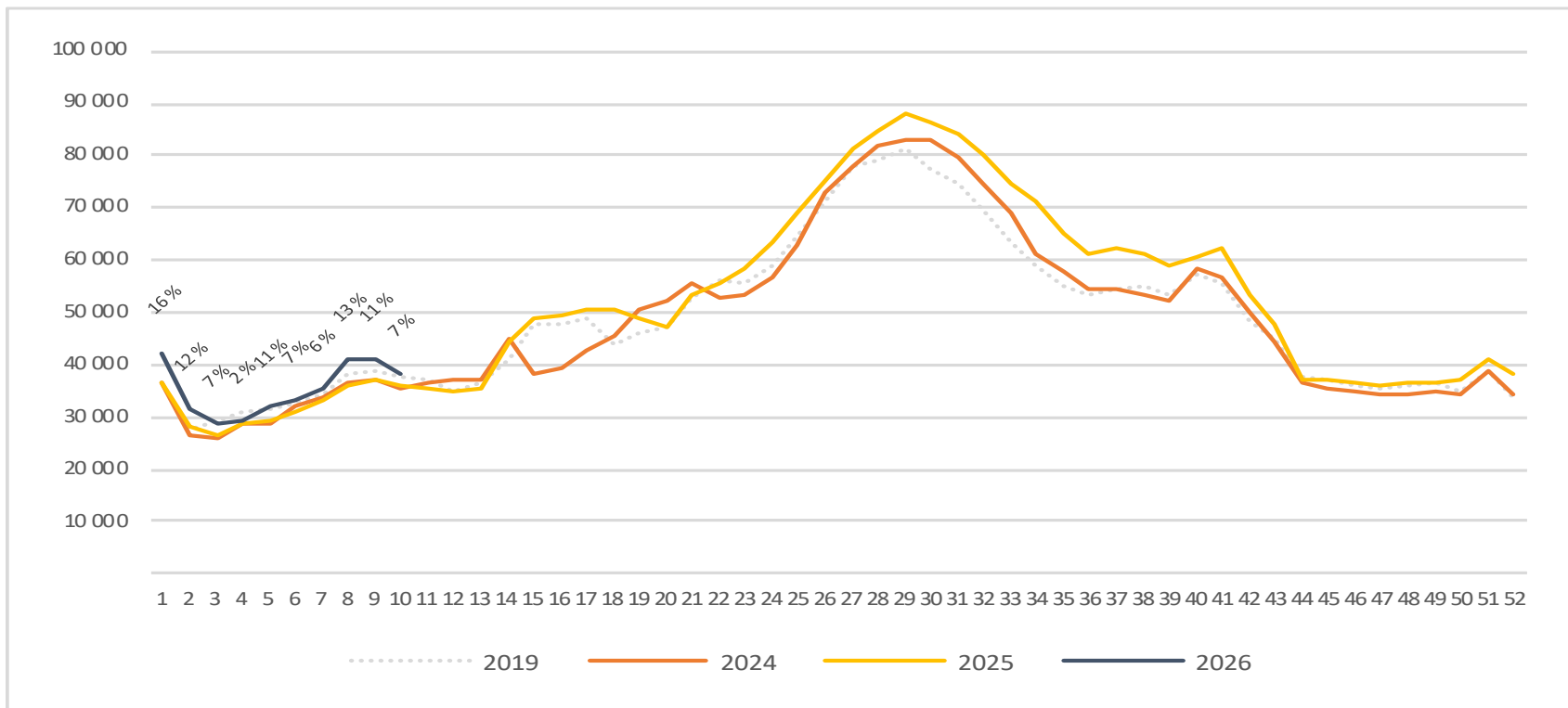
Passengers BGO total per week

The change is measured against the same week last year



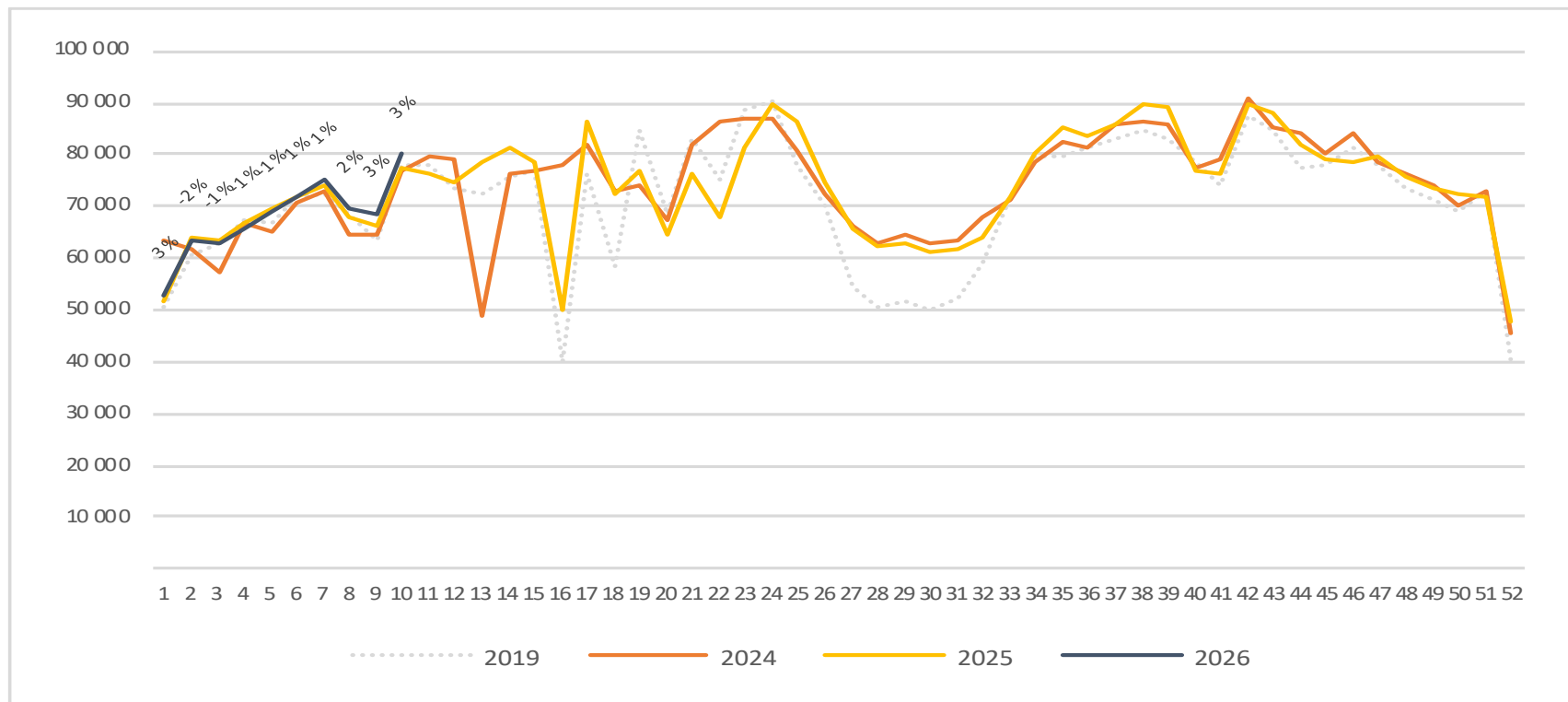
Passengers BGO international per week

The change is measured against the same week last year

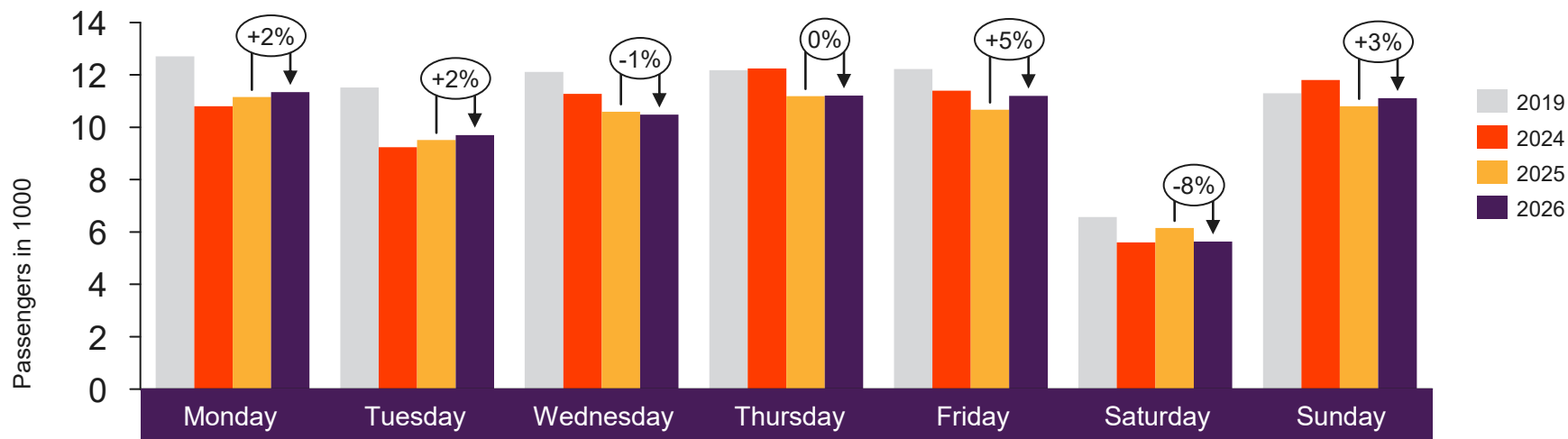


Passengers BGO domestic per week

The change is measured against the same week last year



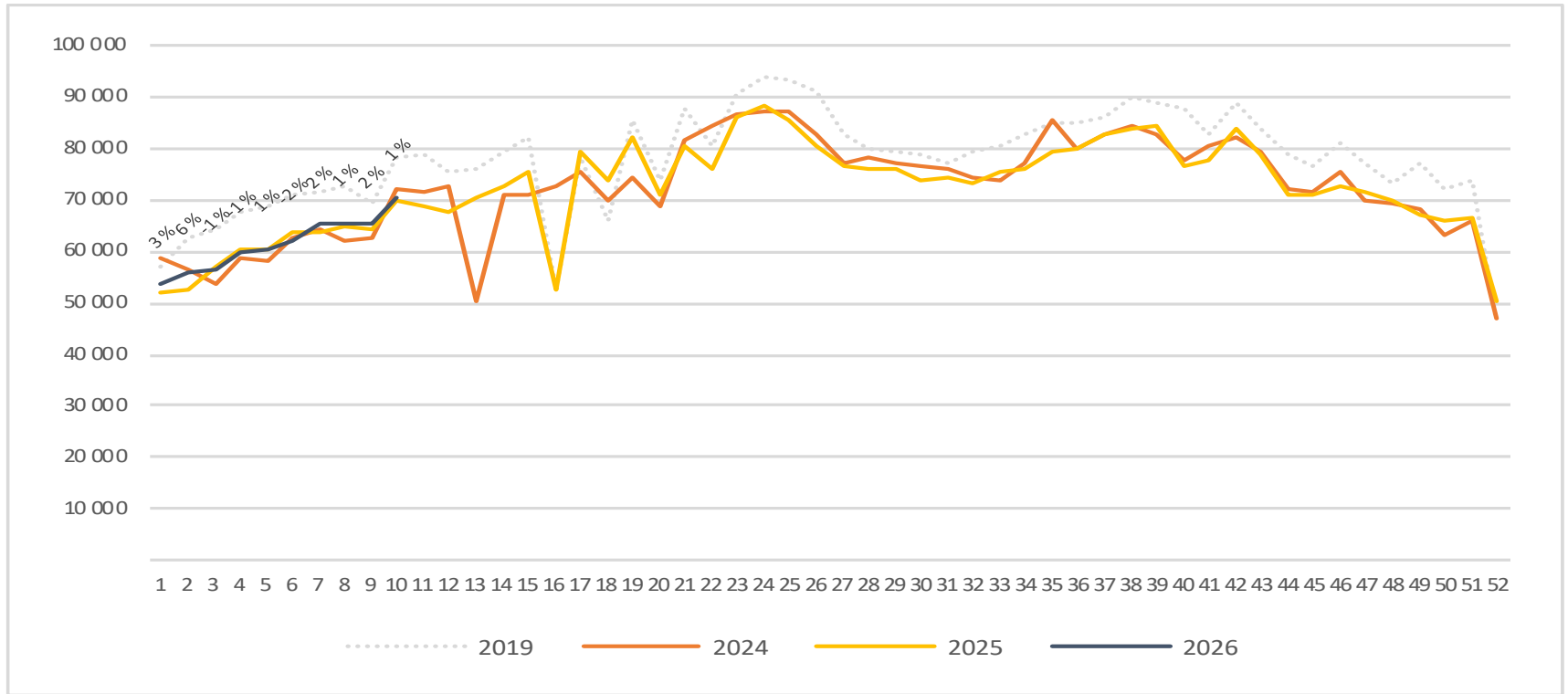
Passengers SVG total per day week 10



	Monday	Tuesday	Wednesday	Thursday	Friday	Saturday	Sunday
2019	12 708	11 517	12 112	12 182	12 220	6 577	11 302
2024	10 806	9 241	11 277	12 248	11 400	5 607	11 805
2025	11 154	9 514	10 598	11 190	10 670	6 154	10 805
2026	11 337	9 704	10 482	11 212	11 198	5 638	11 106

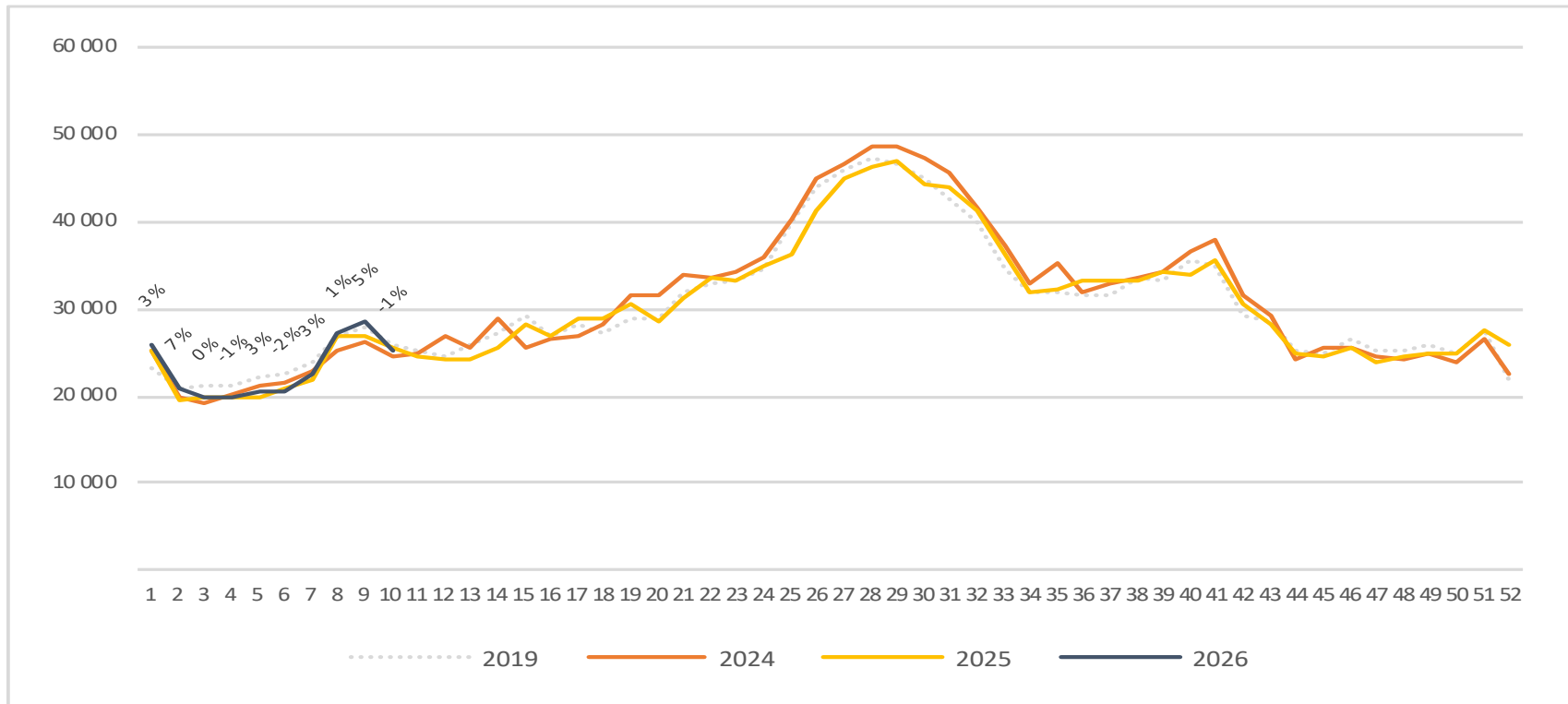
Passengers SVG total per week

The change is measured against the same week last year



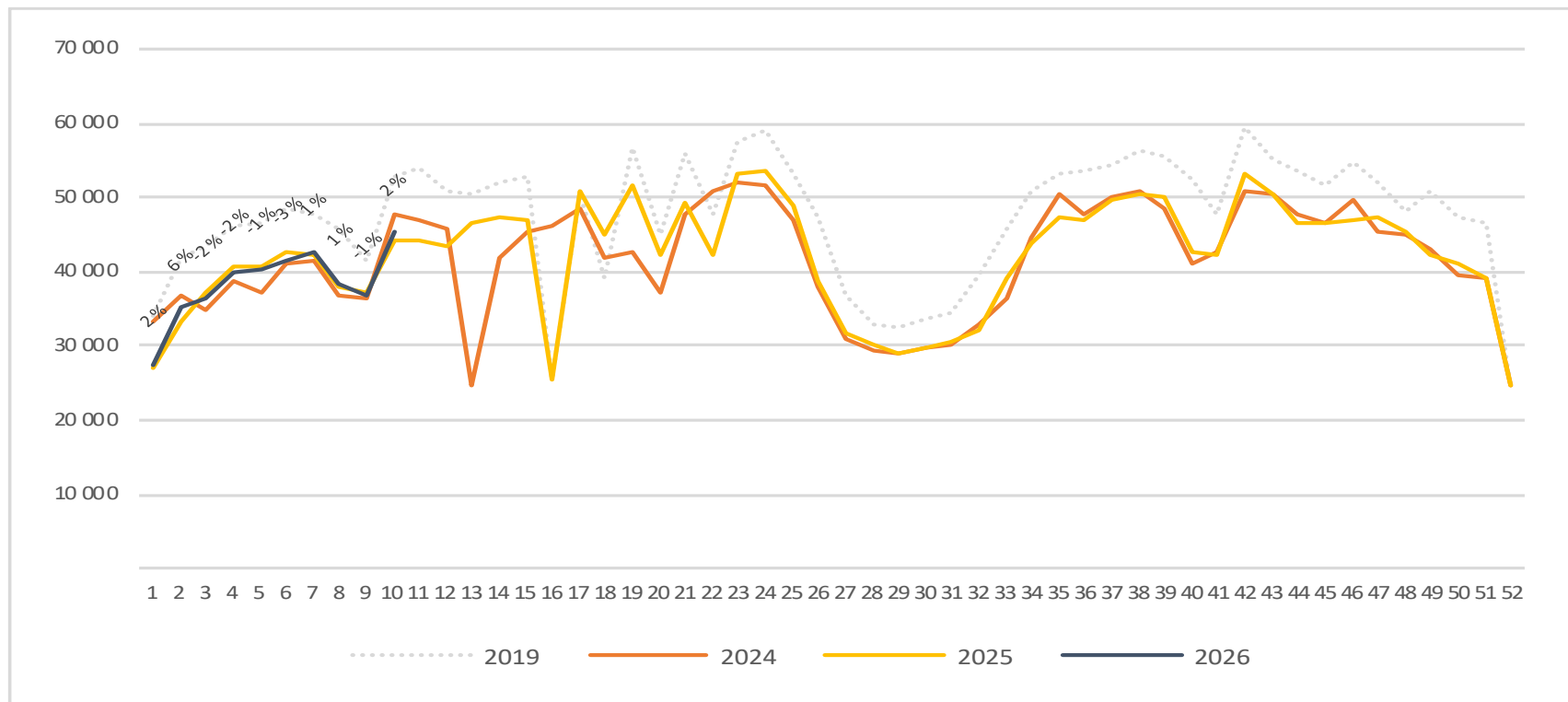
Passengers SVG international per week

The change is measured against the same week last year

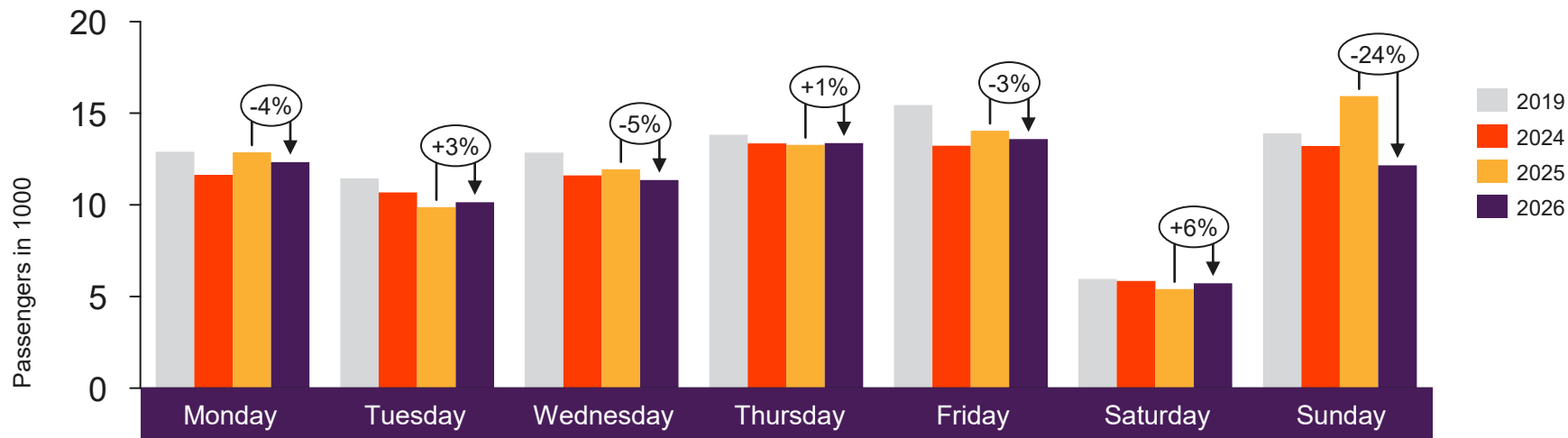


Passengers SVG domestic per week

The change is measured against the same week last year



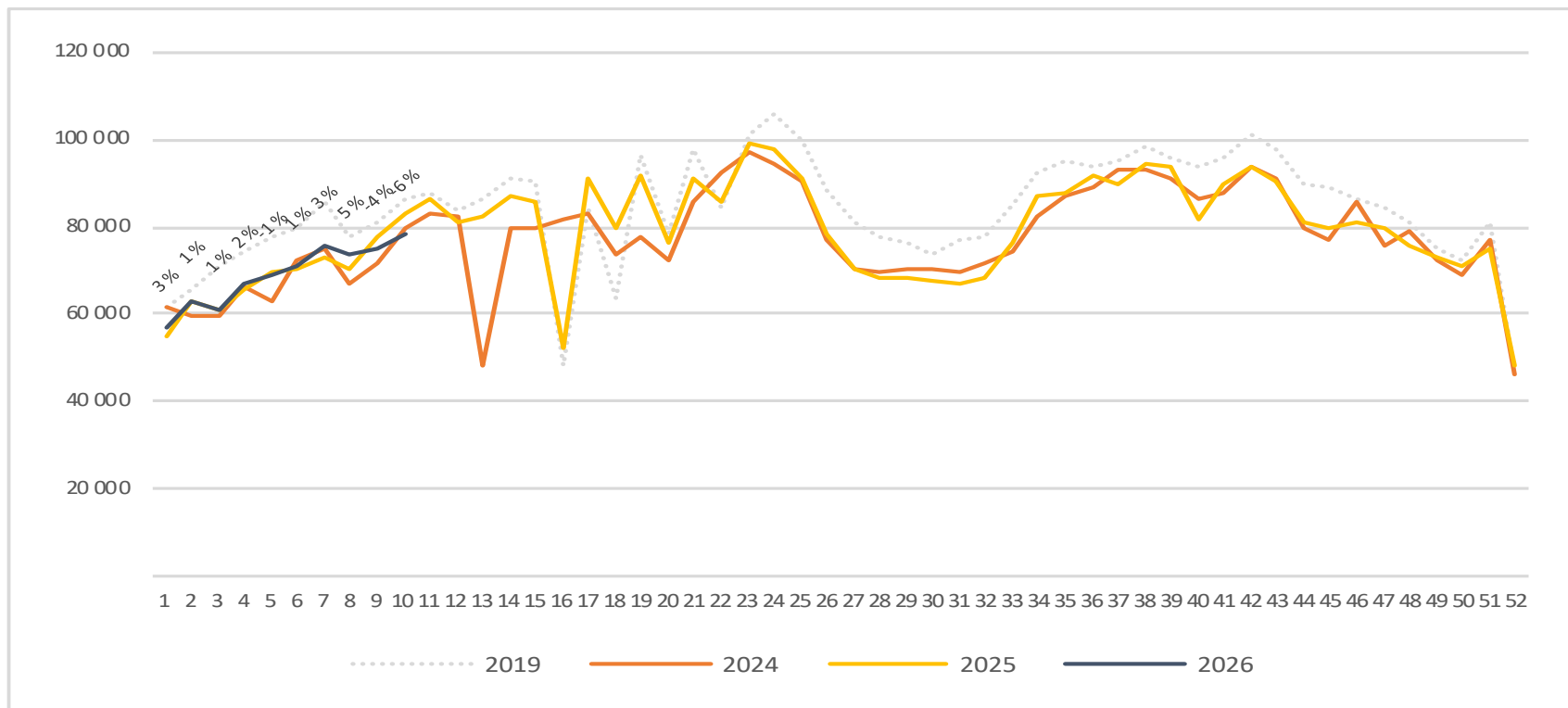
Passengers TRD total per day week 10



2019	12 896	11 453	12 856	13 821	15 444	5 955	13 902
2024	11 647	10 678	11 606	13 356	13 223	5 848	13 212
2025	12 874	9 878	11 945	13 281	14 048	5 412	15 936
2026	12 338	10 144	11 359	13 367	13 594	5 718	12 159

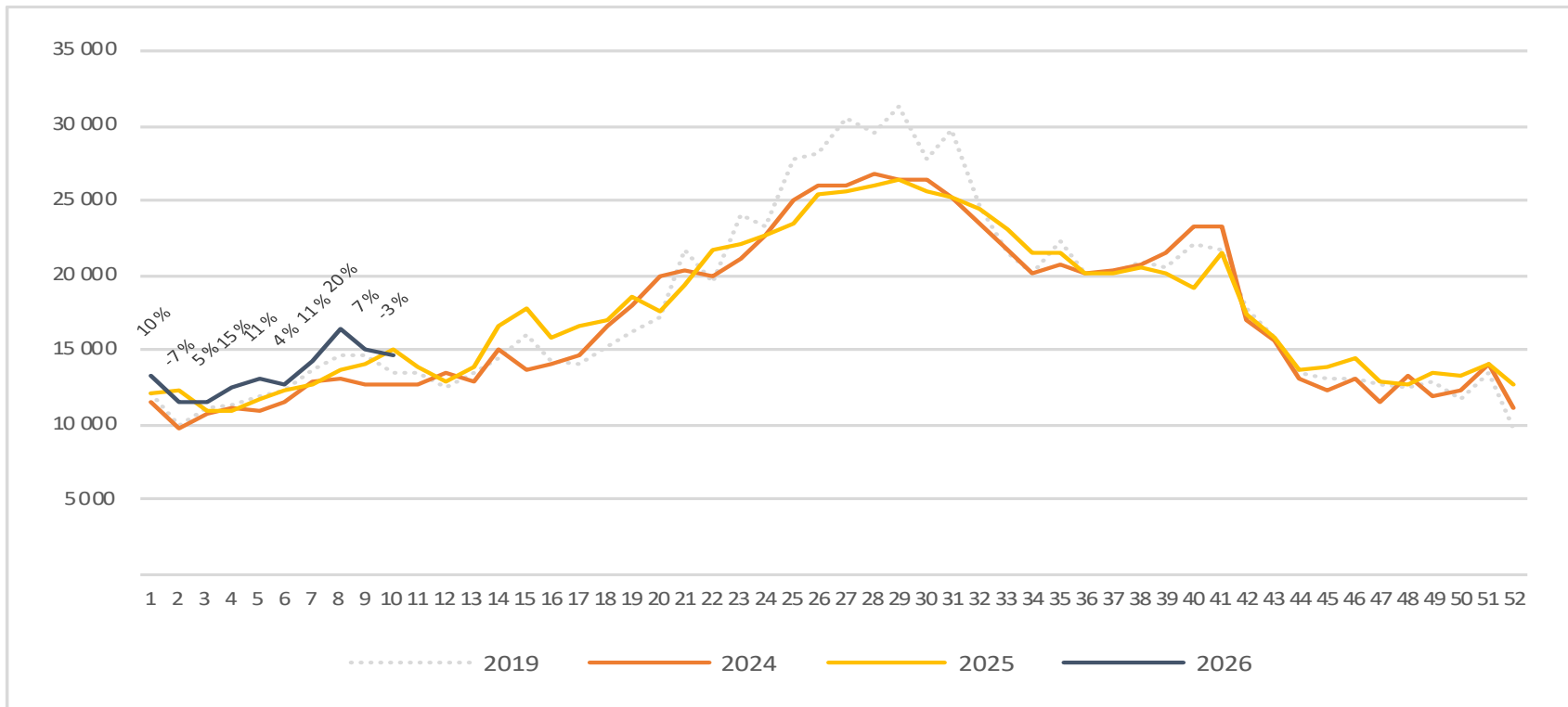
Passengers TRD total per week

The change is measured against the same week last year



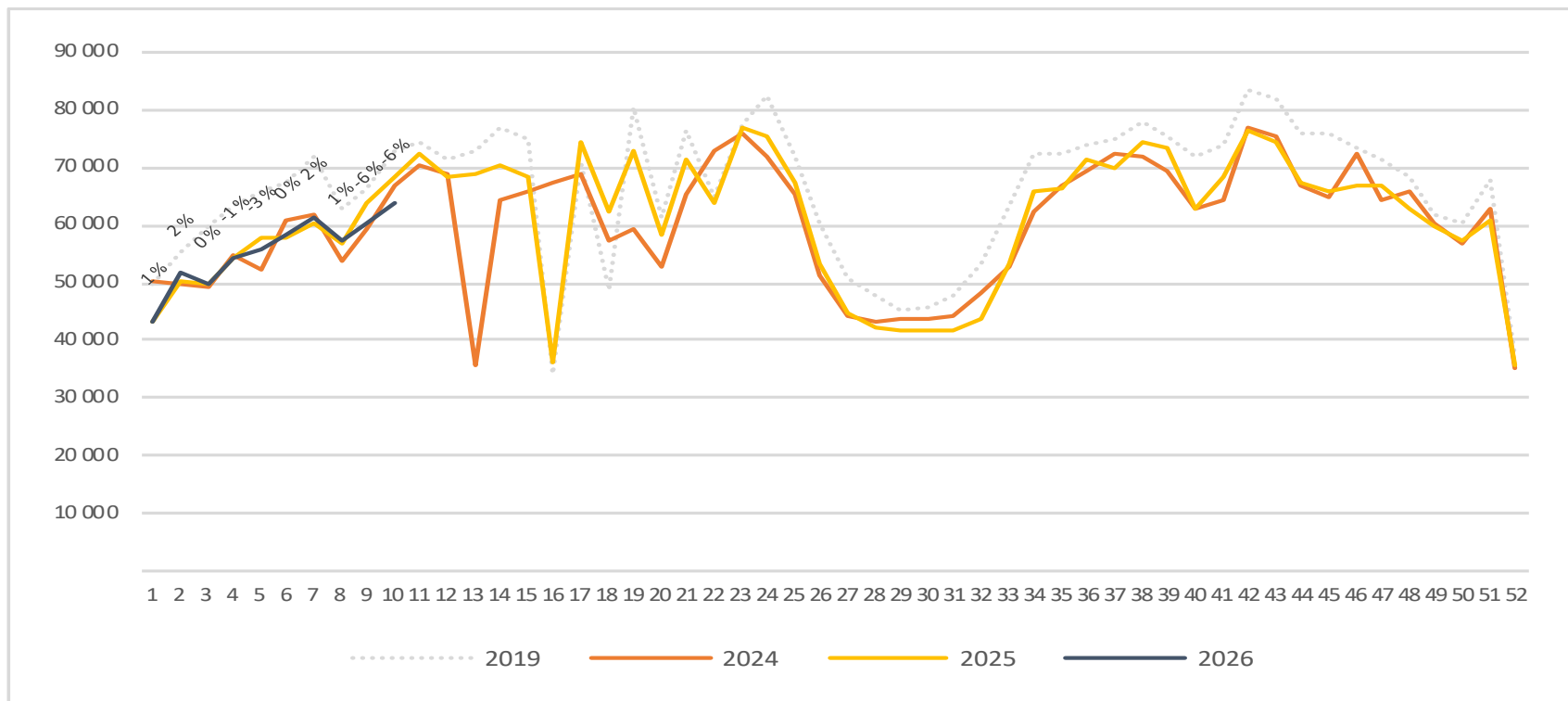
Passengers TRD international per week

The change is measured against the same week last year

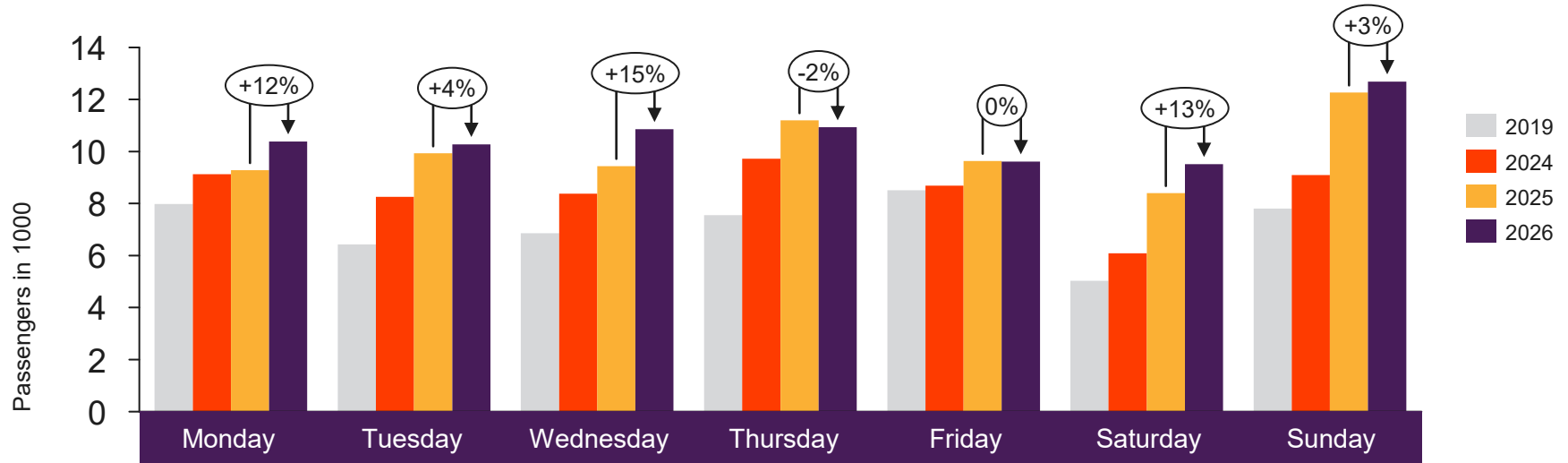


Passengers TRD domestic per week

The change is measured against the same week last year



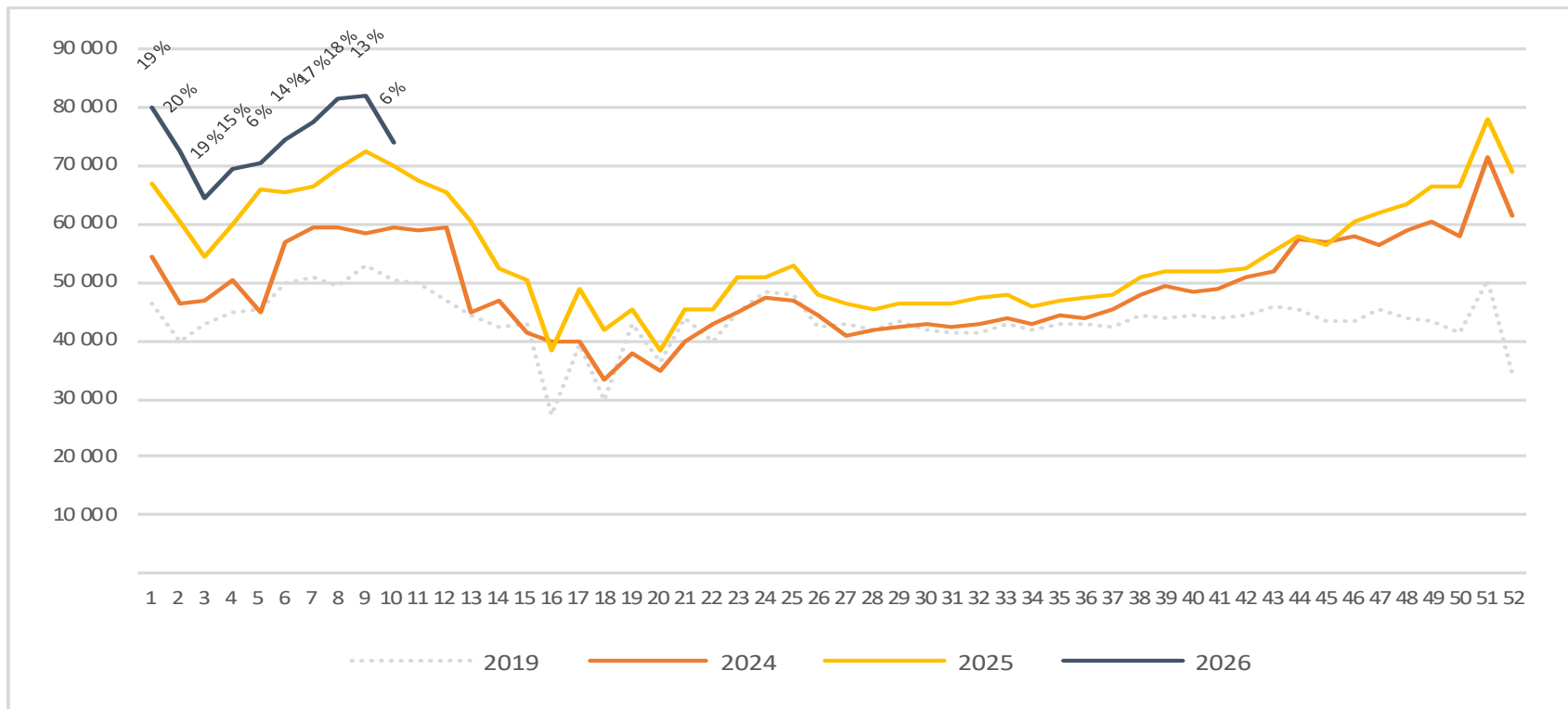
Passengers TOS total per day week 10



	Monday	Tuesday	Wednesday	Thursday	Friday	Saturday	Sunday
2019	7 978	6 434	6 857	7 556	8 506	5 035	7 810
2024	9 128	8 258	8 381	9 727	8 684	6 082	9 094
2025	9 285	9 927	9 441	11 199	9 637	8 405	12 264
2026	10 382	10 279	10 860	10 930	9 613	9 511	12 687

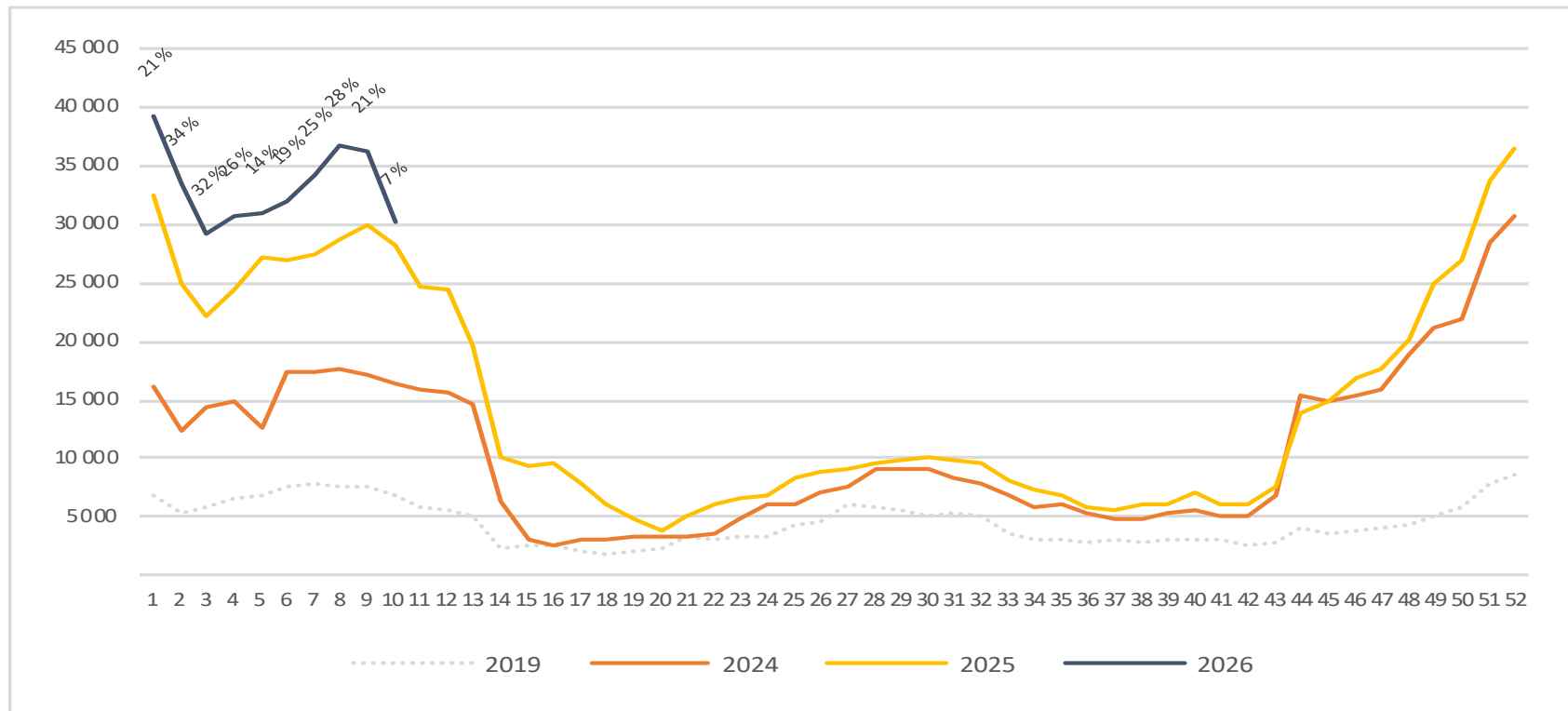
Passengers TOS total per week

The change is measured against the same week last year



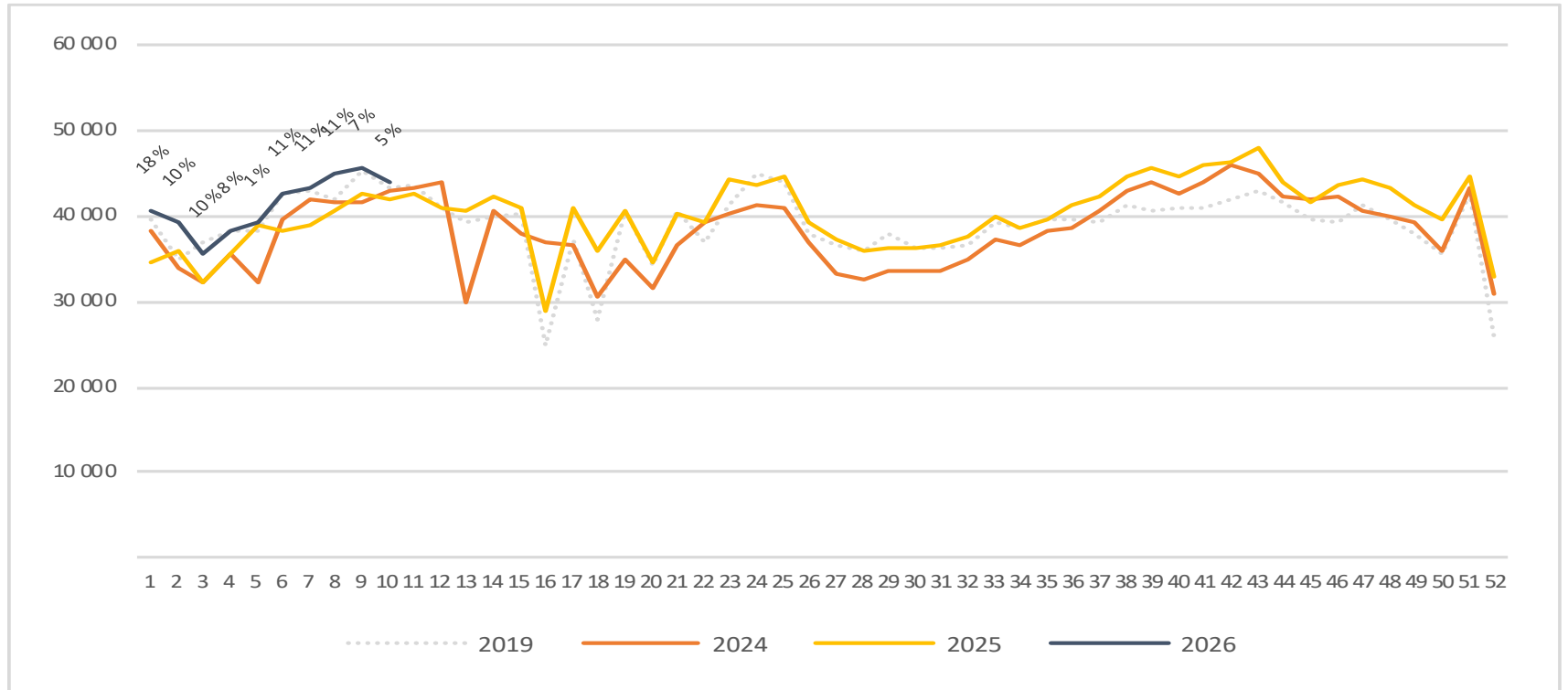
Passengers TOS international per week

The change is measured against the same week last year



Passengers TOS domestic per week

The change is measured against the same week last year



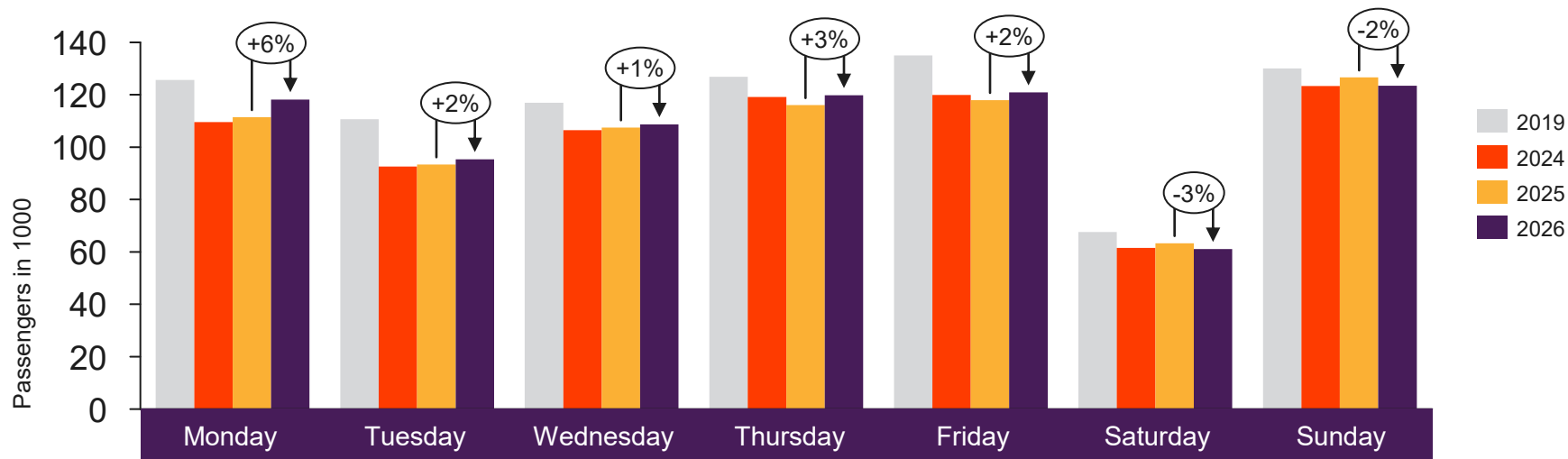


[Return to content page](#)

Top 4 airports

Total passenger numbers from Oslo, Bergen, Stavanger and Trondheim

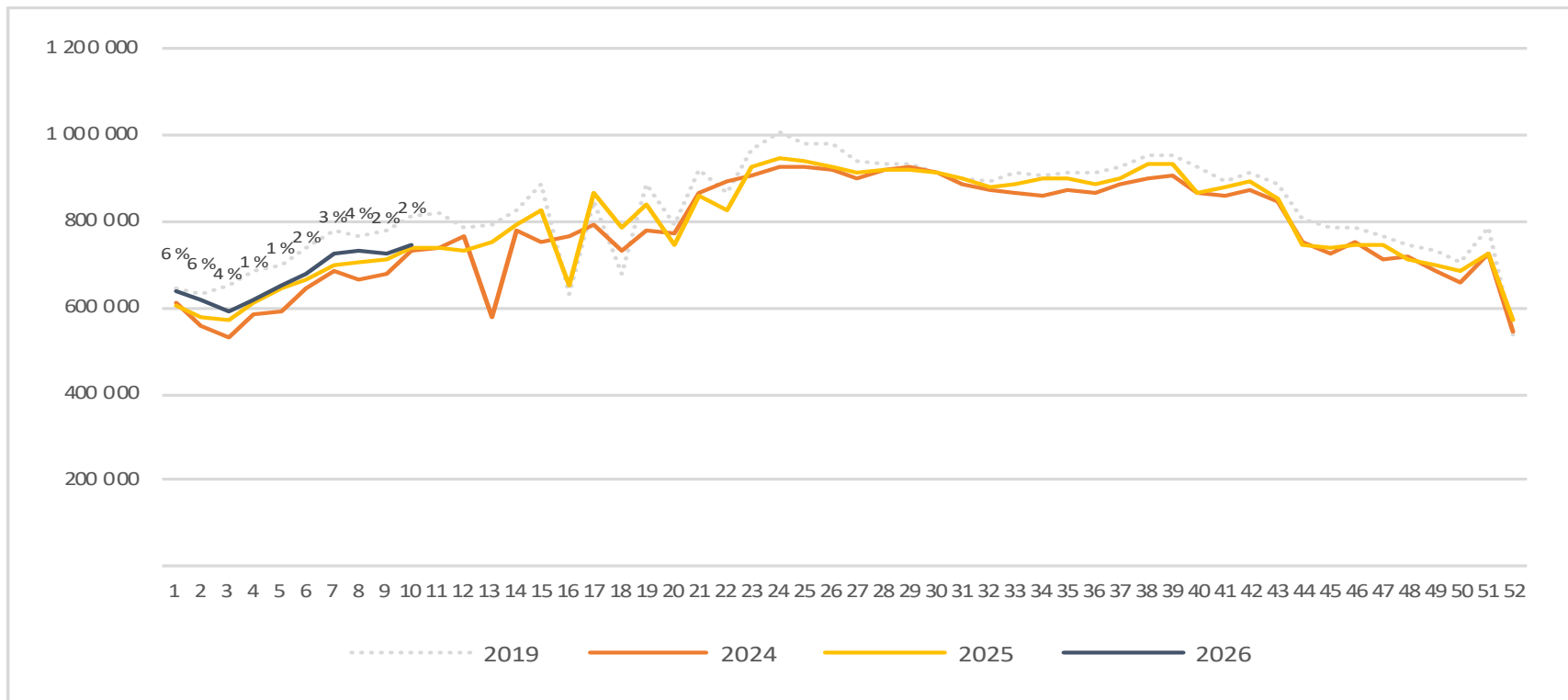
Passengers top 4 airports total per day week 10



2019	125 692	110 692	116 903	126 899	135 025	67 630	130 043
2024	109 546	92 586	106 510	119 196	119 898	61 534	123 334
2025	111 437	93 391	107 470	116 053	117 956	63 295	126 599
2026	118 151	95 355	108 701	119 859	120 861	61 096	123 469

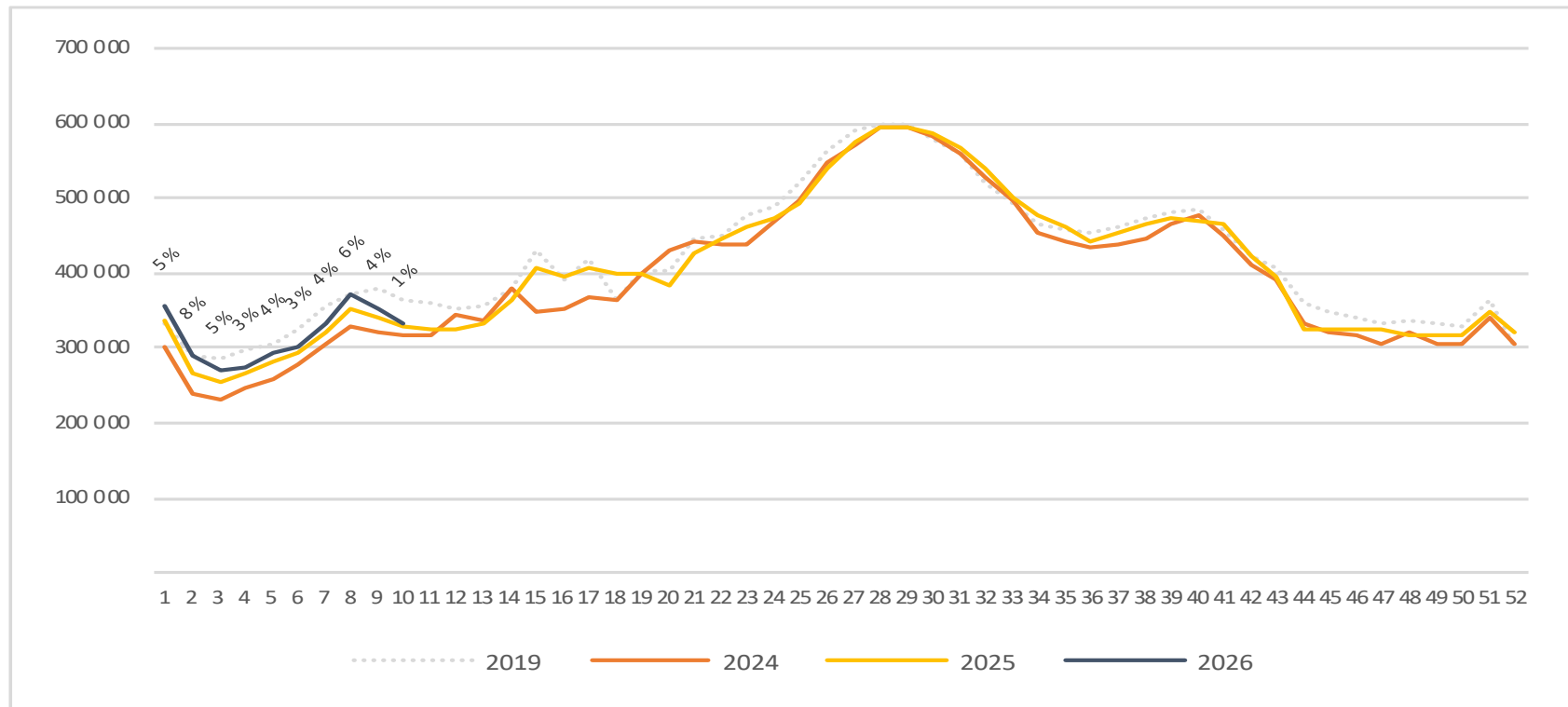
Passengers top 4 airports total per week

The change is measured against the same week last year



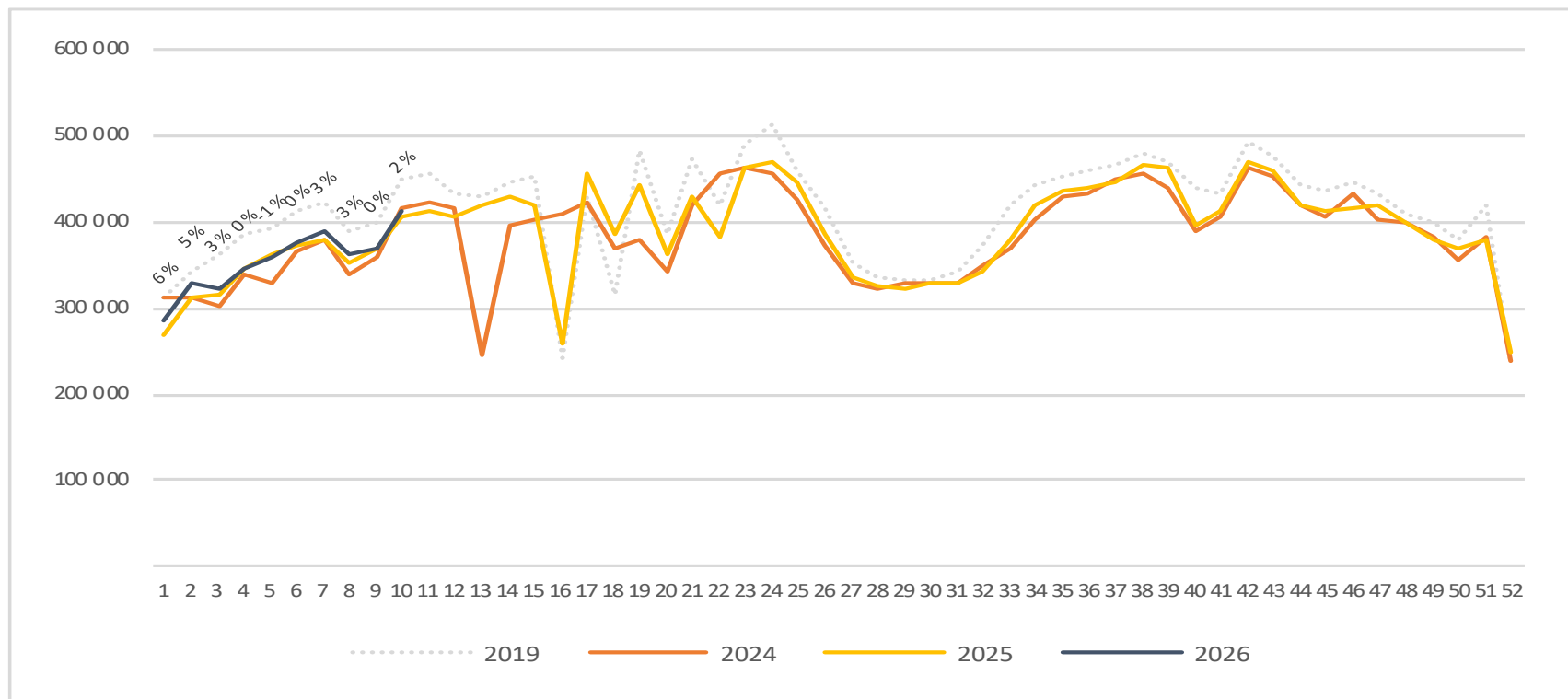
Passengers top 4 airports international per week

The change is measured against the same week last year



Passengers top 4 airports domestic per week

The change is measured against the same week last year



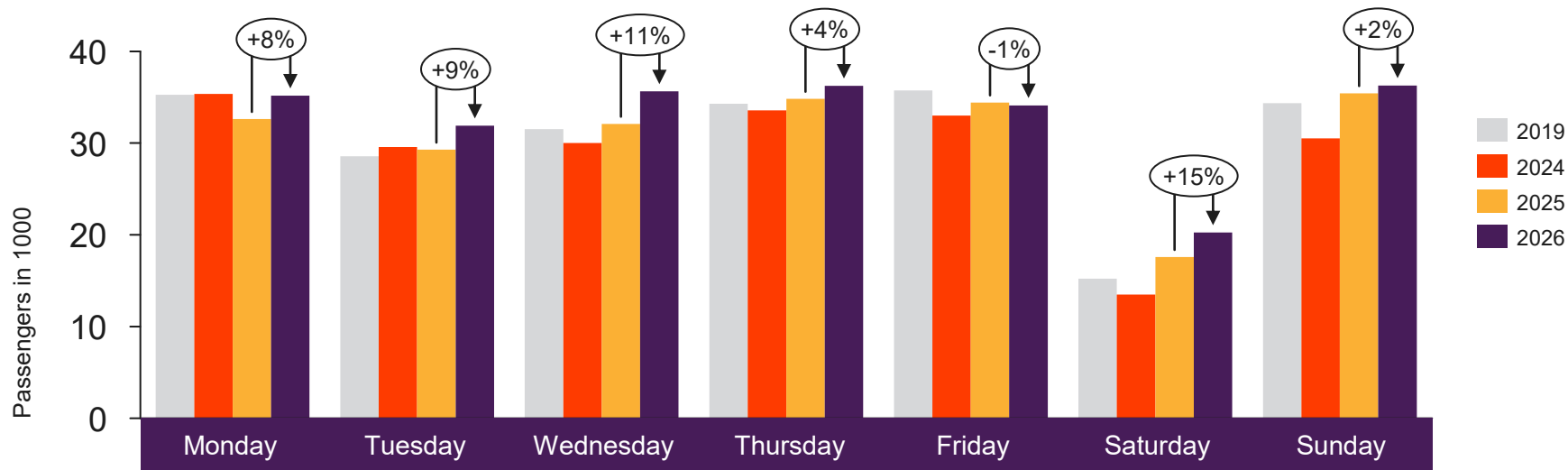


[Return to content page](#)

Regional and local airports

Total passenger numbers from Alta, Andenes, Bardufoss, Berlevåg, Bodø, Brønnøysund, Båtsfjord, Florø, Førde, Hammerfest, Harstad/Narvik, Hasvik, Honningsvåg, Kirkenes, Kristiansand, Kristiansund, Lakselv, Leknes, Mehamn, Mo i Rana, Molde, Mosjøen, Namsos, Røros, Rørvik, Røst, Sandane, Sandnessjøen, Sogndal, Stokmarknes, Svalbard, Svolvær, Sørkjosen, Tromsø, Vadsø, Vardø, Værøy, Ørsta-Volda and Ålesund

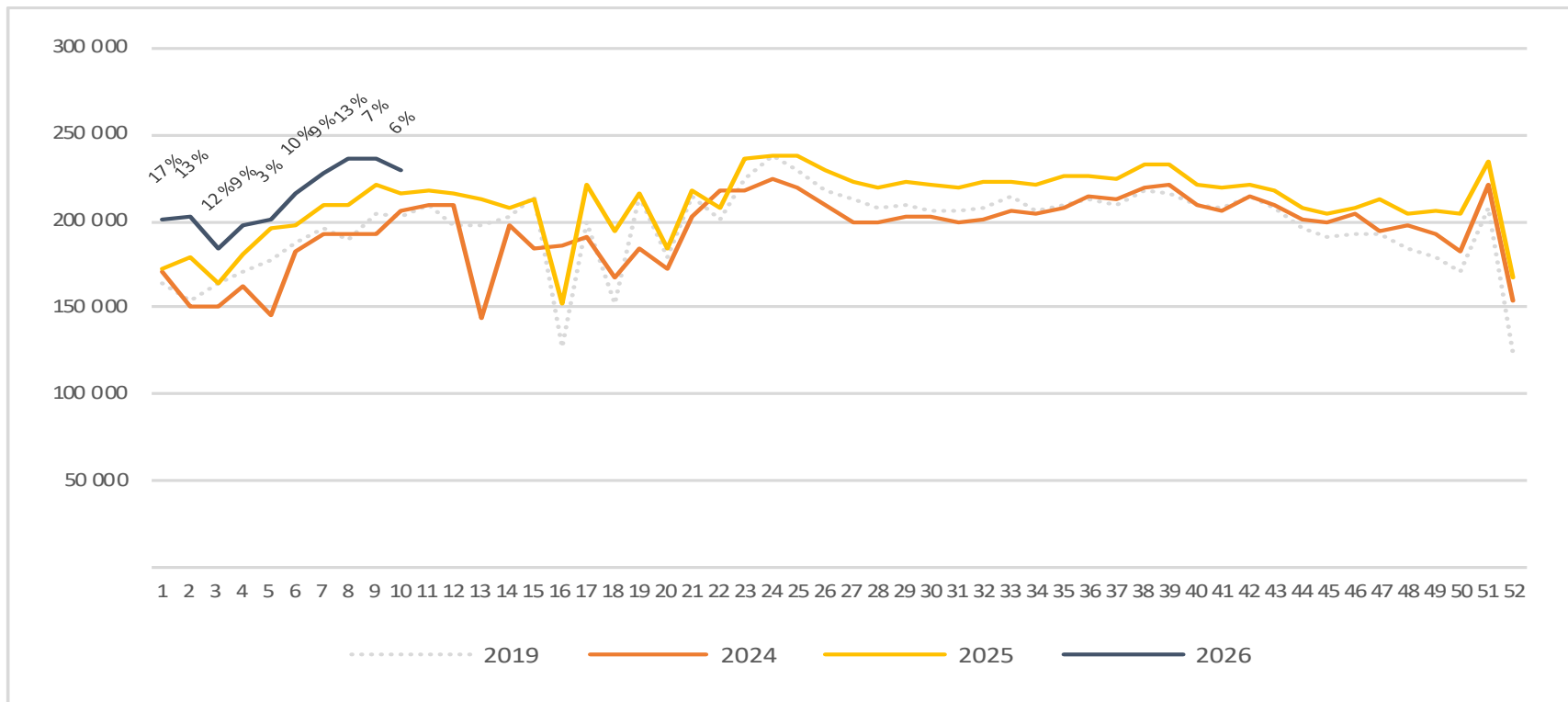
Passengers Regional and local airports total per day week 10



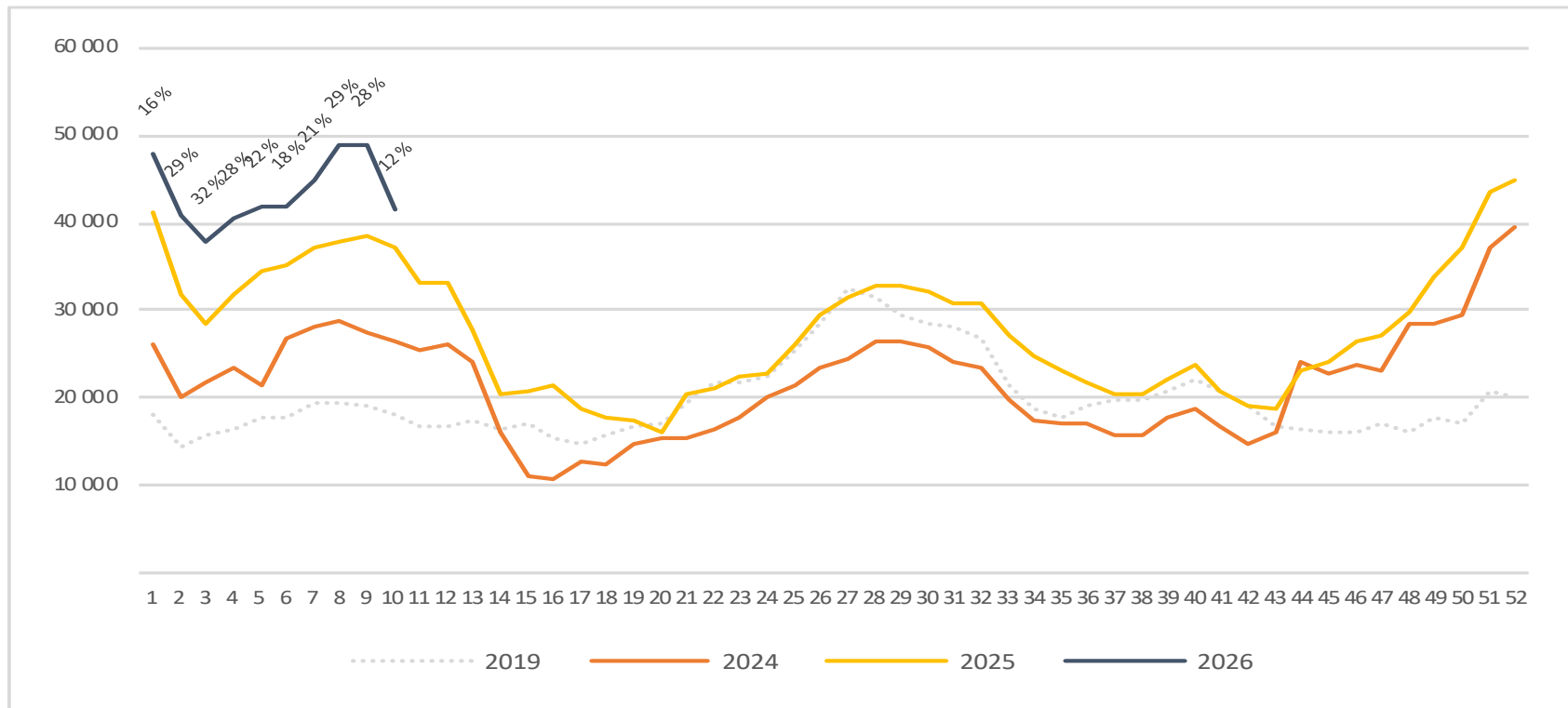
2019	35 258	28 582	31 512	34 298	35 758	15 222	34 350
2024	35 371	29 574	30 002	33 563	33 013	13 484	30 511
2025	32 633	29 291	32 092	34 832	34 416	17 585	35 433
2026	35 166	31 908	35 638	36 251	34 118	20 252	36 279

Passengers Regional and local airports total per week

The change is measured against the same week last year

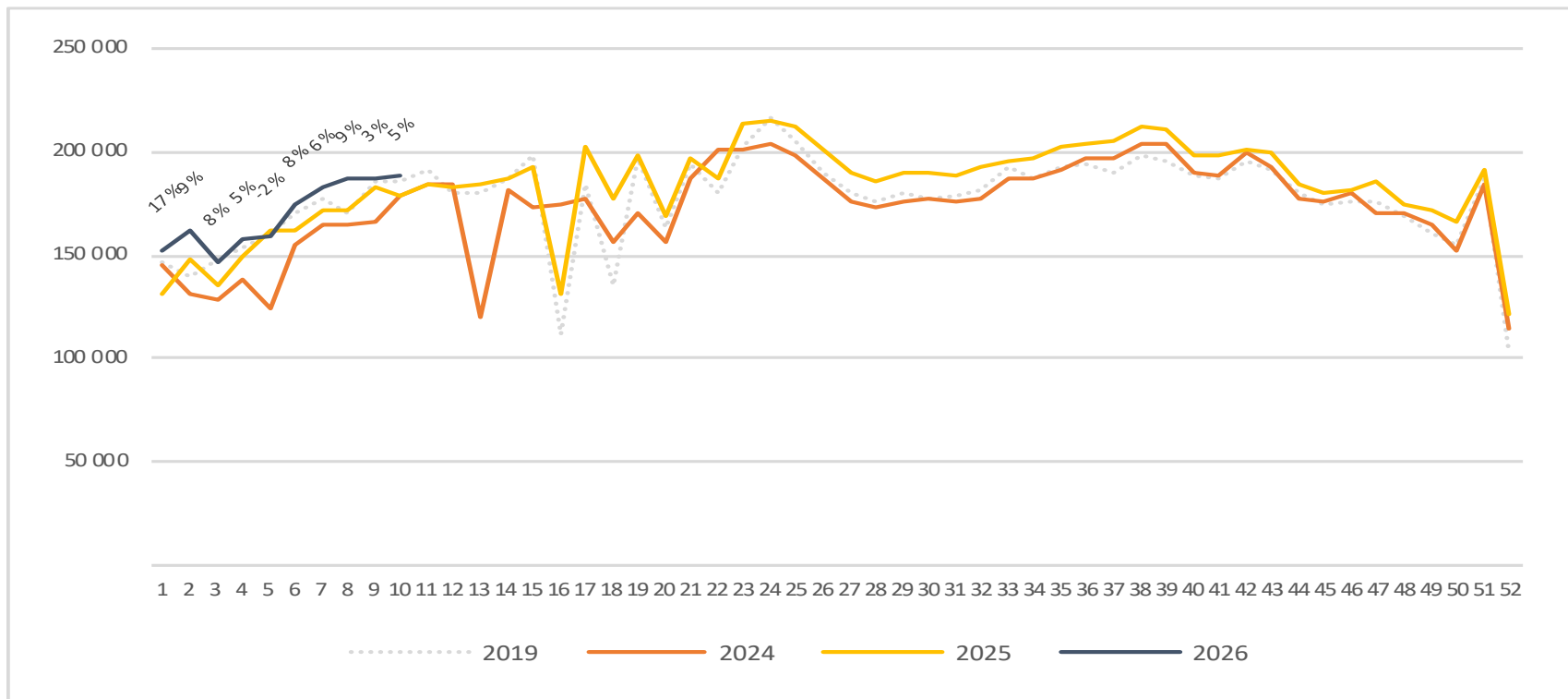


Passengers Regional and local airports international per week



Passengers Regional and local airports domestic per week

The change is measured against the same week last year



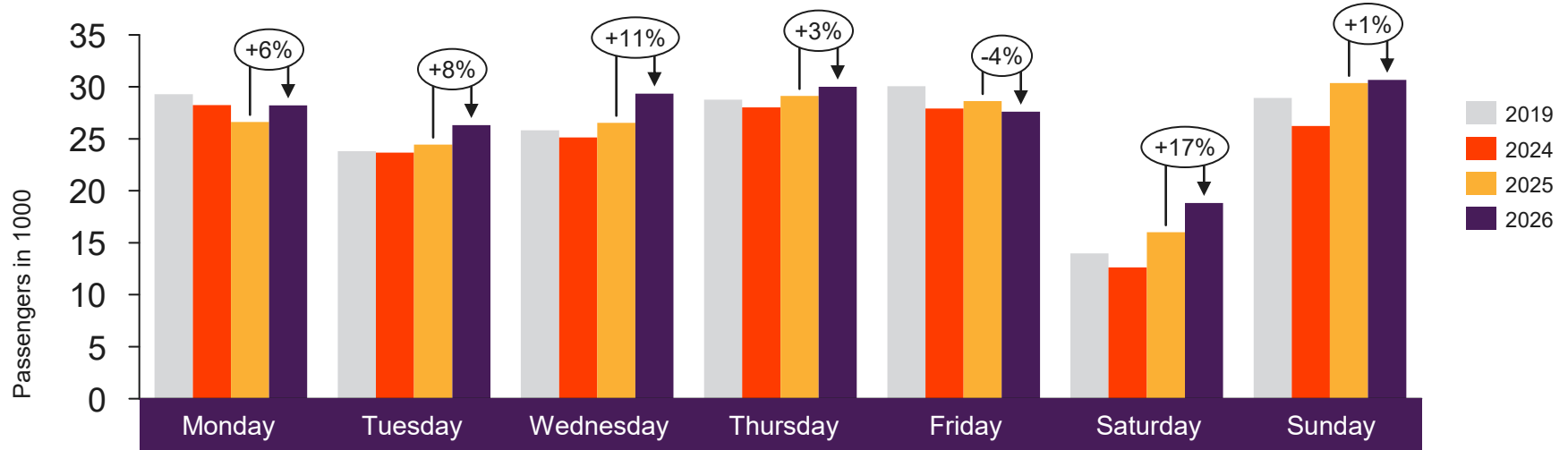


[Return to content
page](#)

Regional airports

Total passenger numbers from Alta, Bodø, Harstad/Narvik, Kirkenes, Kristiansand, Kristiansund, Molde, Svalbard, Tromsø and Ålesund

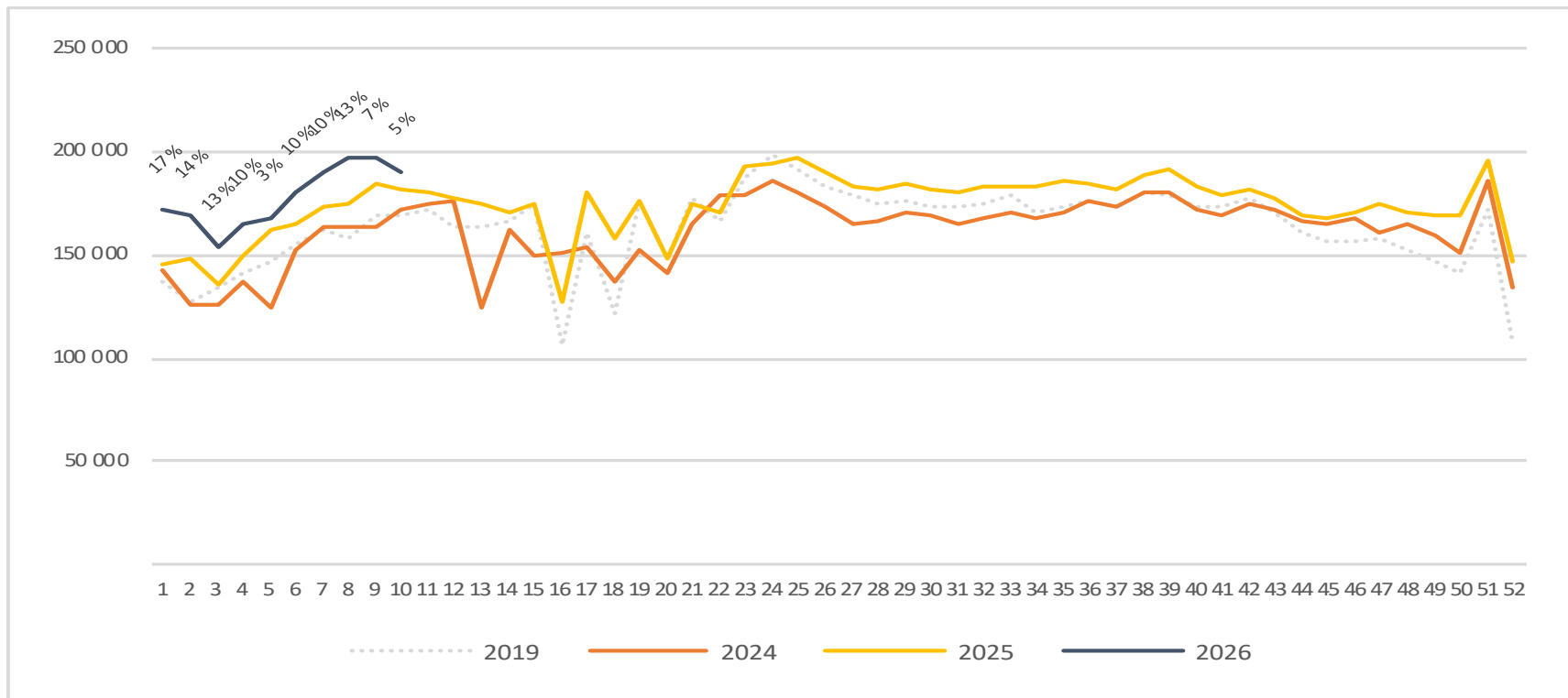
Passengers Regional airports total per day week 10



	Monday	Tuesday	Wednesday	Thursday	Friday	Saturday	Sunday
2019	29 289	23 824	25 810	28 782	30 075	13 968	28 936
2024	28 236	23 662	25 127	28 031	27 907	12 620	26 229
2025	26 631	24 440	26 535	29 120	28 643	16 017	30 368
2026	28 207	26 306	29 341	30 021	27 604	18 813	30 675

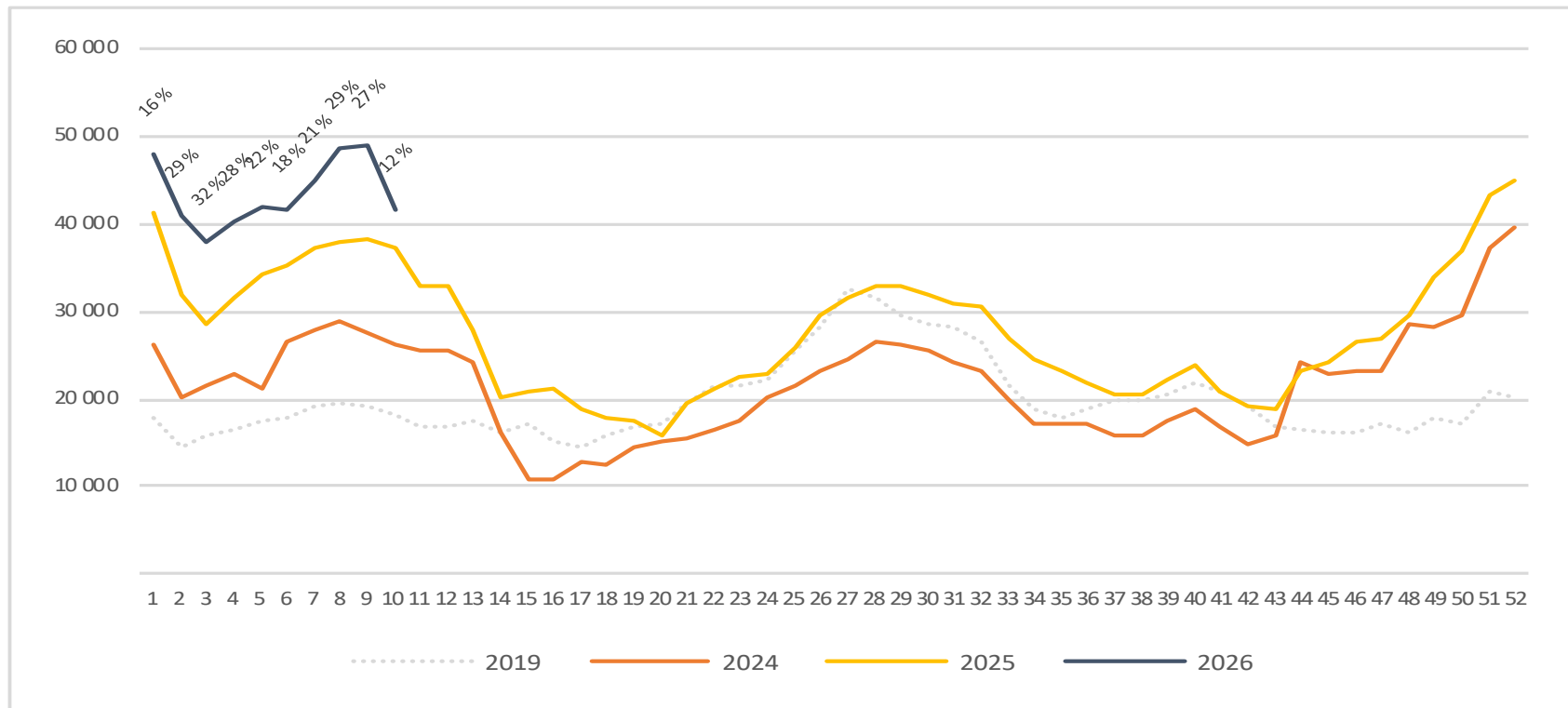
Passengers Regional airports total per week

The change is measured against the same week last year



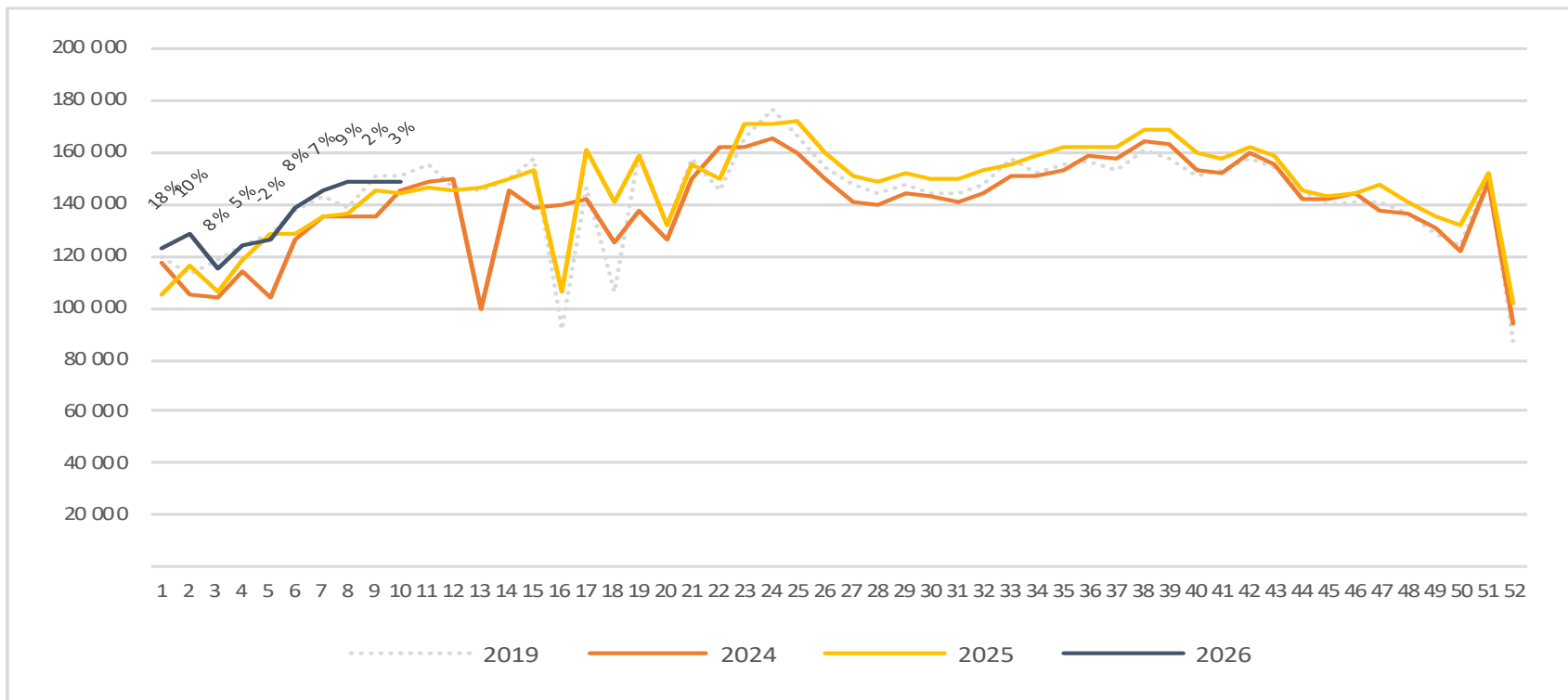
Passengers Regional airports international per week

The change is measured against the same week last year



Passengers Regional airports domestic per week

The change is measured against the same week last year



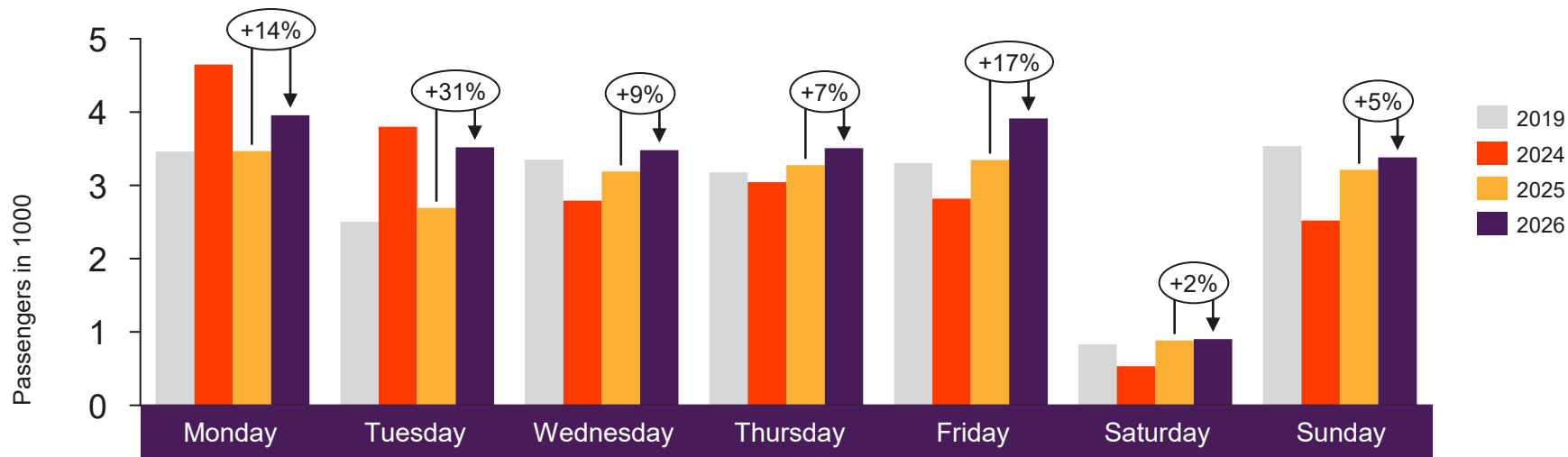


[Return to content
page](#)

Local Airports in Trøndelag and Nordland (Local Mid airports)

Total passenger numbers from Andenes, Bardufoss, Brønnøysund, Leknes, Mo i Rana, Mosjøen, Namsos, Rørvik, Røst, Sandnessjøen, Stokmarknes, Svolvær and Værøy

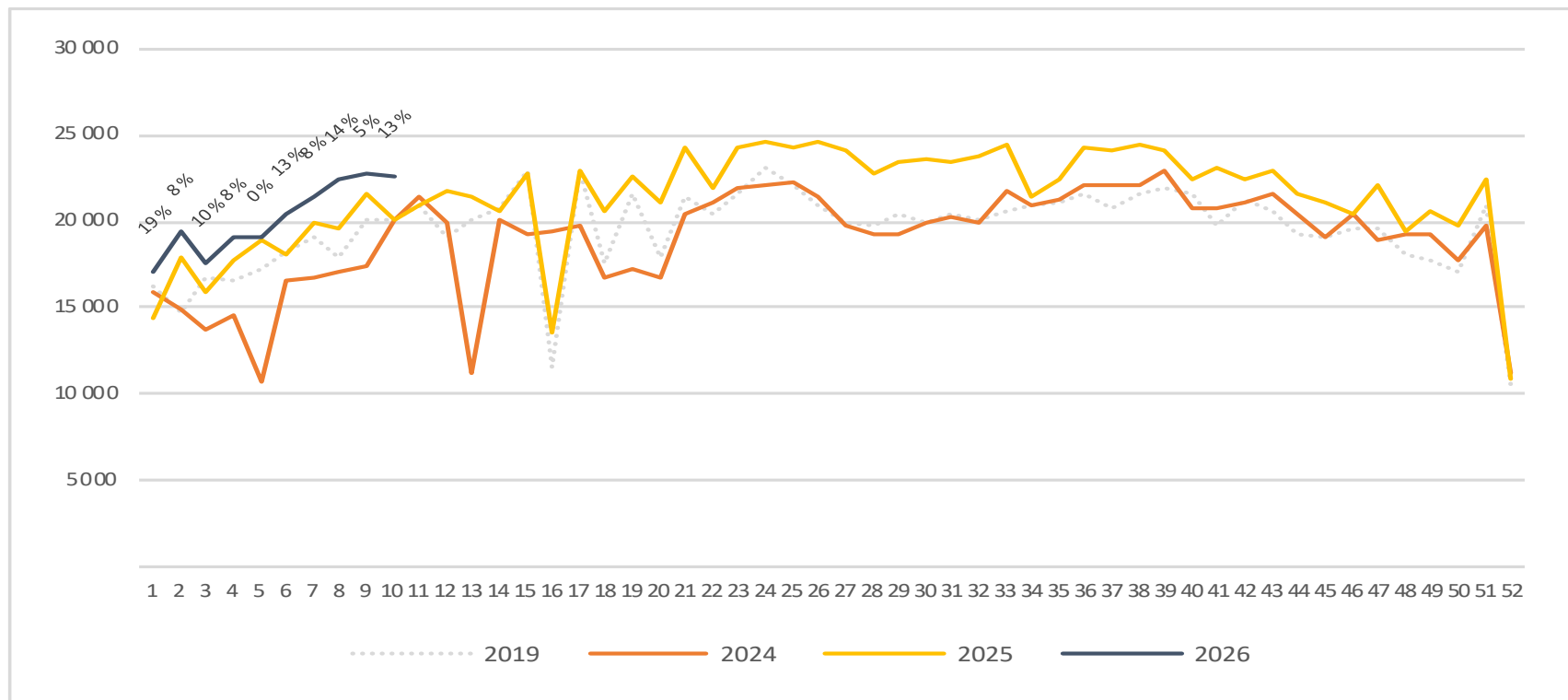
Passengers Local Mid airports total per day week 10



	Monday	Tuesday	Wednesday	Thursday	Friday	Saturday	Sunday
2019	3 460	2 503	3 349	3 177	3 304	834	3 534
2024	4 650	3 798	2 792	3 043	2 820	535	2 522
2025	3 469	2 693	3 189	3 275	3 347	885	3 211
2026	3 958	3 520	3 482	3 509	3 913	902	3 383

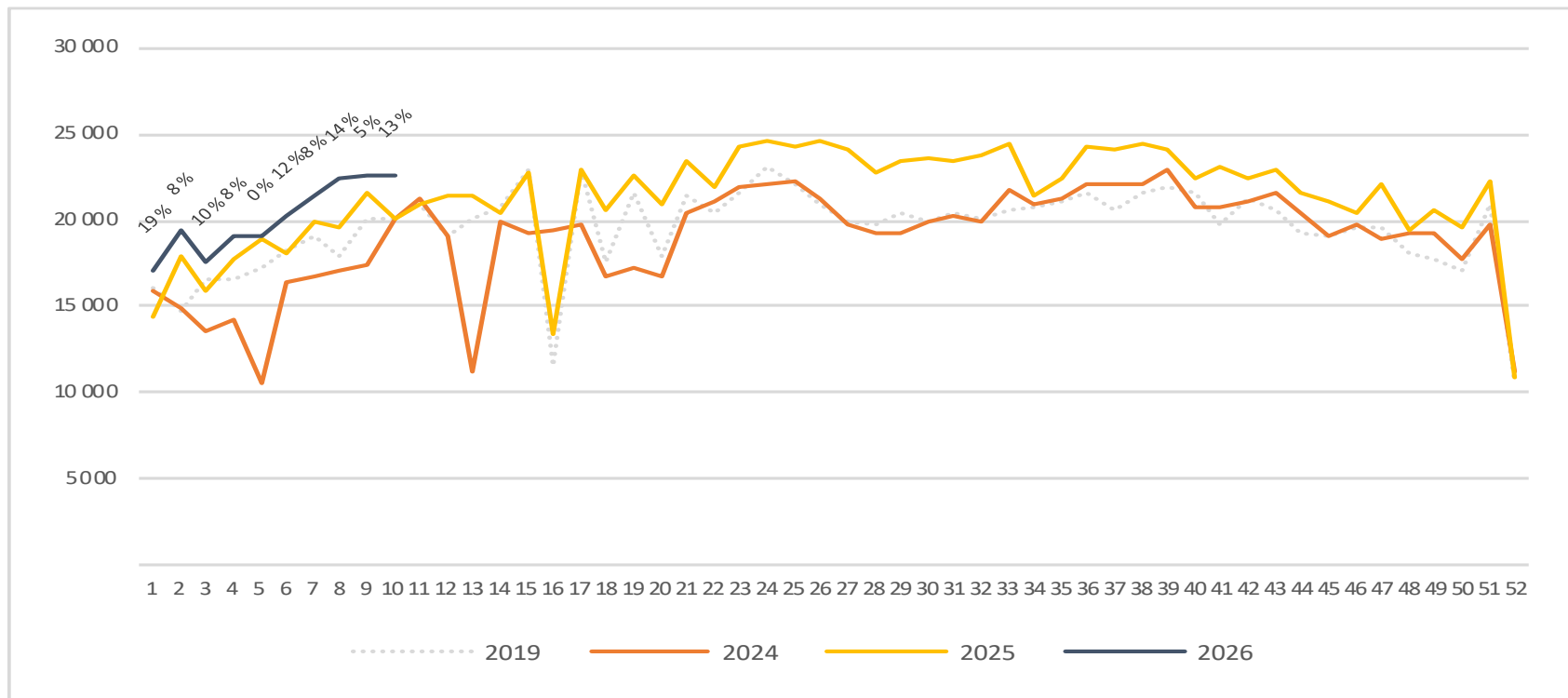
Passengers Local Mid airports total per week

The change is measured against the same week last year



Passengers Local Mid airports domestic per week

The change is measured against the same week last year



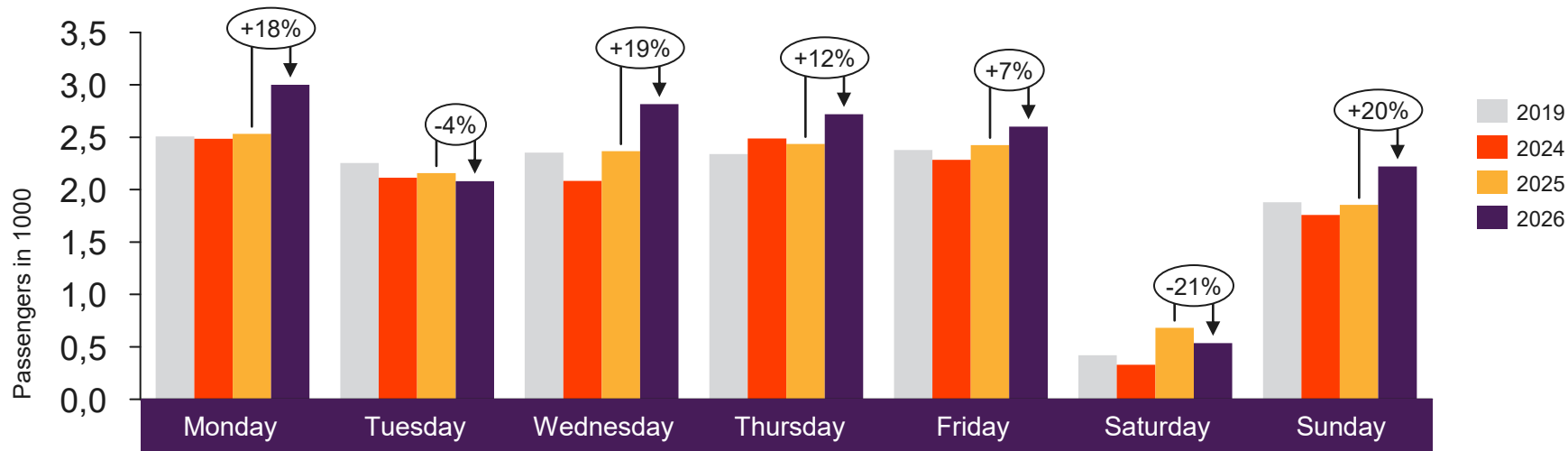


[Return to content
page](#)

Local airports on the West coast and in Troms and Finnmark

Total passenger numbers from Berlevåg, Båtsfjord, Florø, Førde, Hammerfest, Hasvik, Honningsvåg, Lakselv, Mehamn, Røros, Sandane, Sogndal, Sørkjosen, Vadsø, Vardø and Ørsta-Volda

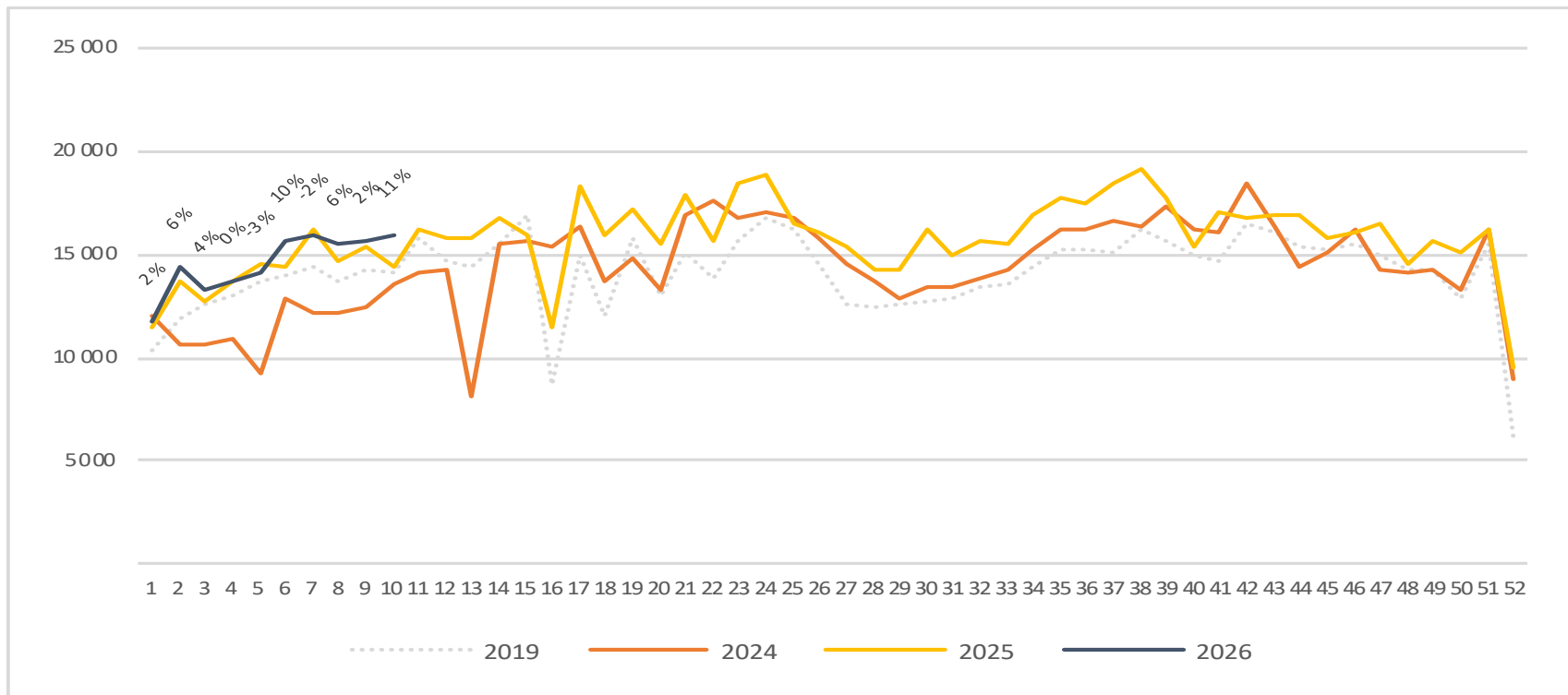
Passengers local airports on the West coast and in Troms and Finnmark total per day week 10



	Monday	Tuesday	Wednesday	Thursday	Friday	Saturday	Sunday
2019	2 509	2 255	2 353	2 339	2 379	420	1 880
2024	2 485	2 114	2 083	2 489	2 286	329	1 760
2025	2 533	2 158	2 368	2 437	2 426	683	1 854
2026	3 001	2 082	2 815	2 721	2 601	537	2 221

Passengers local airports on the West coast and in Troms and Finnmark total per week

The change is measured against the same week last year



Passengers local airports on the West coast and in Troms and Finnmark domestic per week

The change is measured against the same week last year

