



Passenger numbers per week

Preliminary figures

- The figures for the previous week are preliminary. It takes some time for all passenger numbers to be reported, so the figures for the previous week may be lower than the final figures.
- The figures are from SIA, Avinor's traffic database.

Content

- Top 10 airports
- Avinor total
- Selected airports
- The 4 biggest airports
- Regional and local airports
 - Regional airports
 - Local airports in Trøndelag and Nordland
 - Local airports on the west coast of Norway and in Troms and Finnmark

Top 10 airports, total, week 9

Airport	2019	2024	2025	2026	2026 vs. 2025	
					Change	Change %
Oslo	525 303	444 279	465 331	472 883	7 552	2 %
Bergen	101 987	101 796	103 179	109 352	6 173	6 %
Tromsø	52 882	58 651	72 740	82 092	9 352	13 %
Trondheim	80 968	71 896	77 972	75 237	-2 735	-4 %
Stavanger	69 555	62 634	64 228	65 285	1 057	2 %
Bodø	33 538	31 478	35 778	37 531	1 753	5 %
Harstad/Narvik	14 454	15 513	16 009	18 080	2 071	13 %
Ålesund	20 404	17 731	17 731	16 930	-801	-5 %
Kristiansand	18 646	14 258	13 597	14 615	1 018	7 %
Alta	6 726	6 873	7 467	7 814	347	5 %

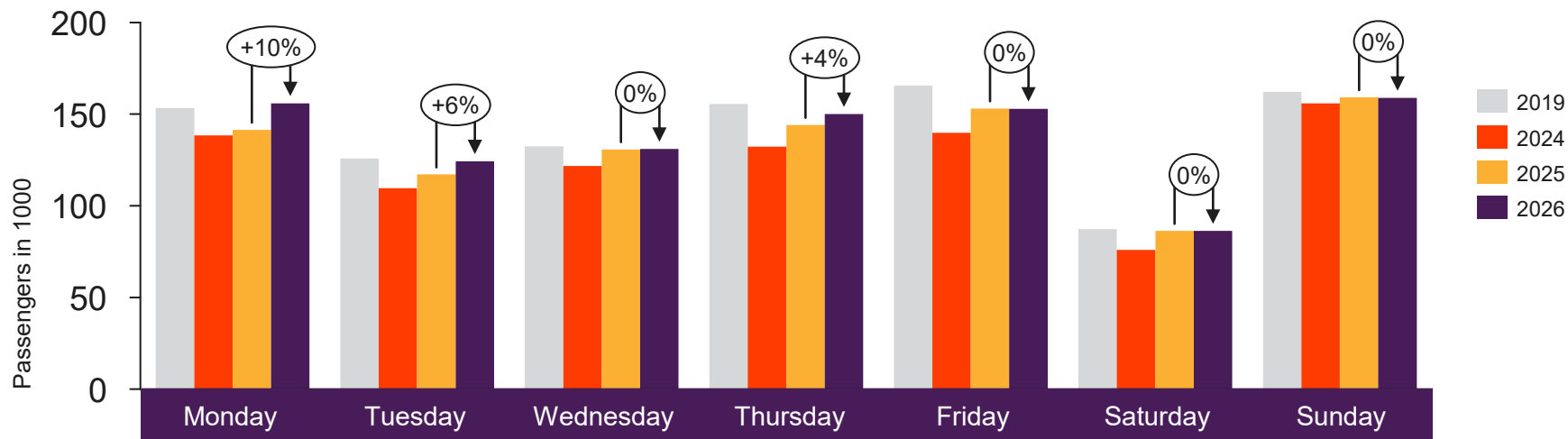


[Return to content
page](#)

Avinor total

Passenger numbers for all Avinor airports

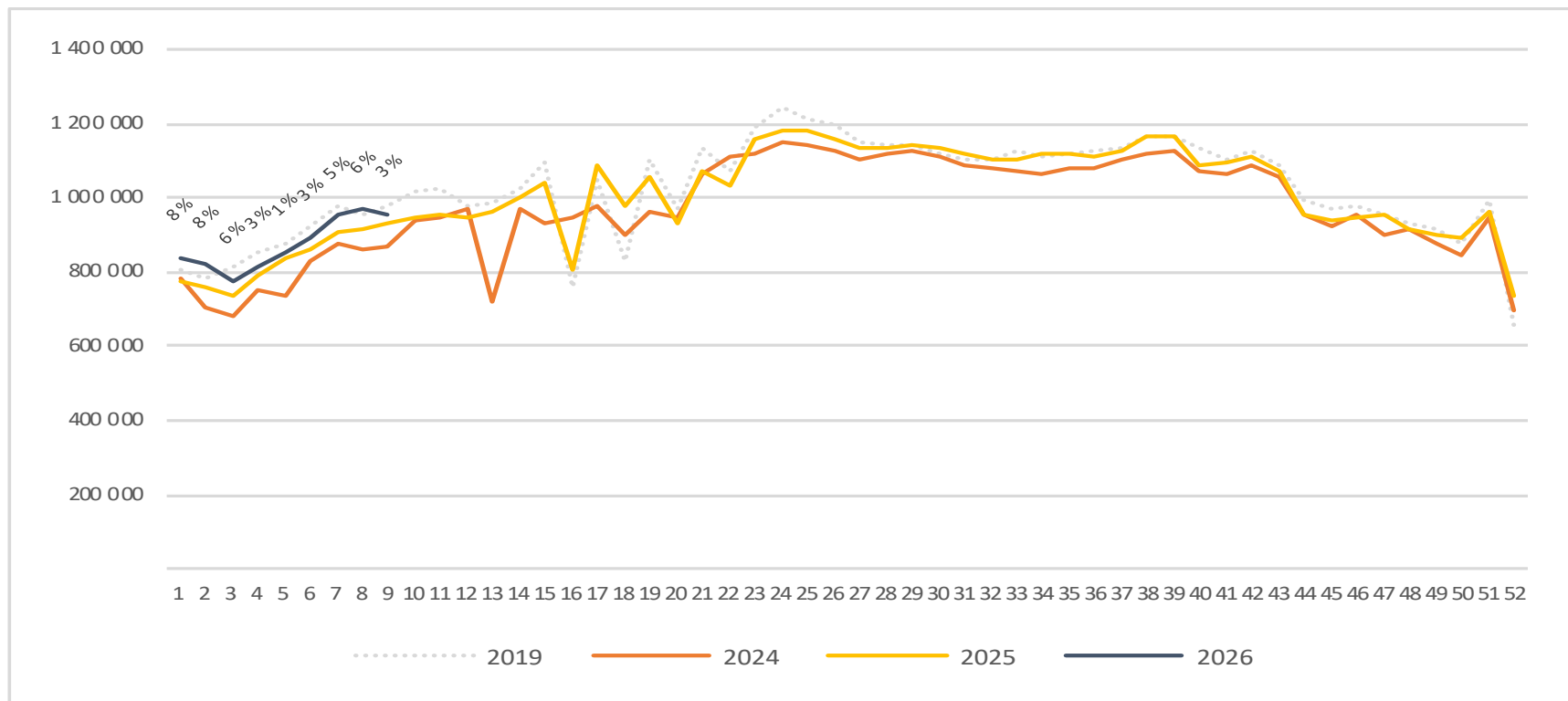
Passengers Avinor total per day week 9



	Monday	Tuesday	Wednesday	Thursday	Friday	Saturday	Sunday
2019	153 446	125 788	132 438	155 566	165 611	87 316	162 162
2024	138 478	109 668	121 739	132 318	139 844	75 941	155 967
2025	141 479	117 112	130 749	144 146	153 082	86 269	159 123
2026	155 825	124 243	131 007	150 057	152 873	86 267	158 867

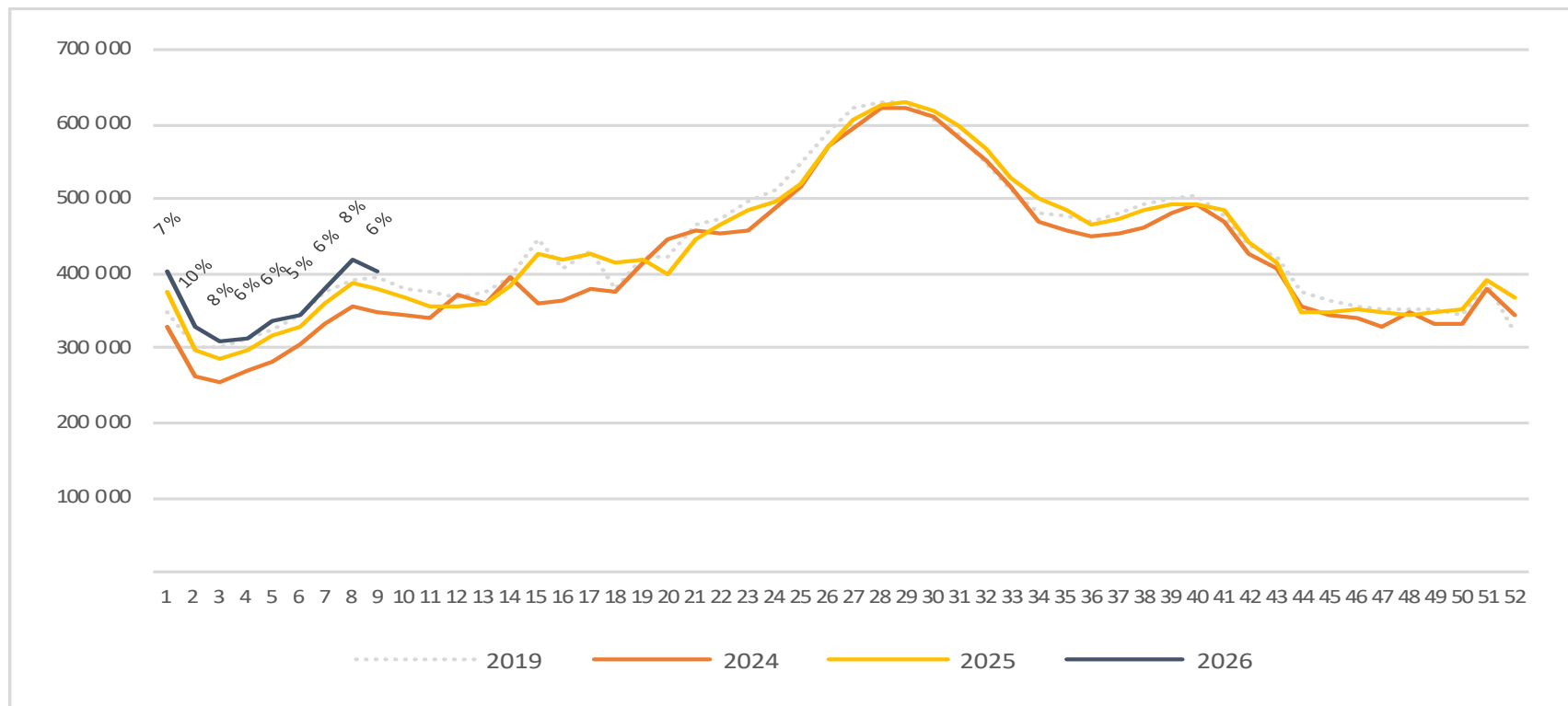
Passengers Avinor total per week

The change is measured against the same week last year



Passengers Avinor international per week

The change is measured against the same week last year

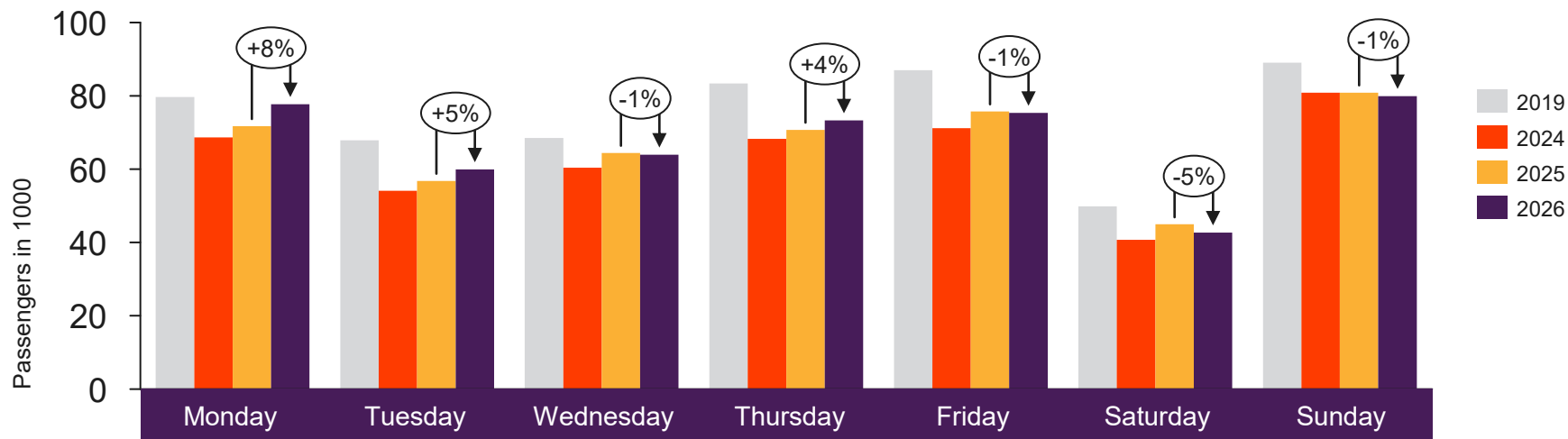




[Return to content page](#)

Selected airports

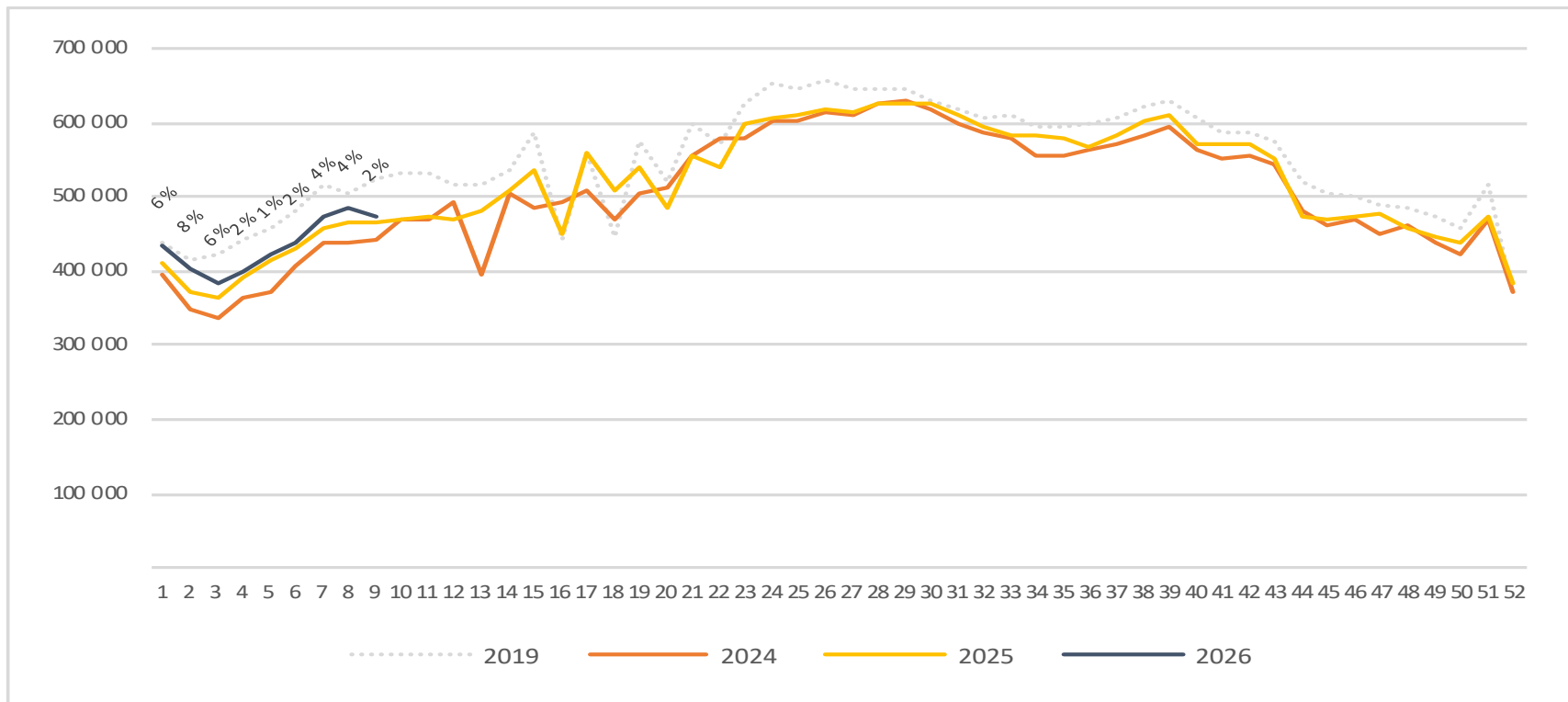
Passengers OSL total per day week 9



2019	79 707	67 878	68 474	83 391	87 009	49 824	89 020
2024	68 645	54 139	60 423	68 298	71 200	40 731	80 843
2025	71 761	56 818	64 399	70 733	75 772	44 954	80 894
2026	77 734	59 898	63 940	73 308	75 356	42 710	79 937

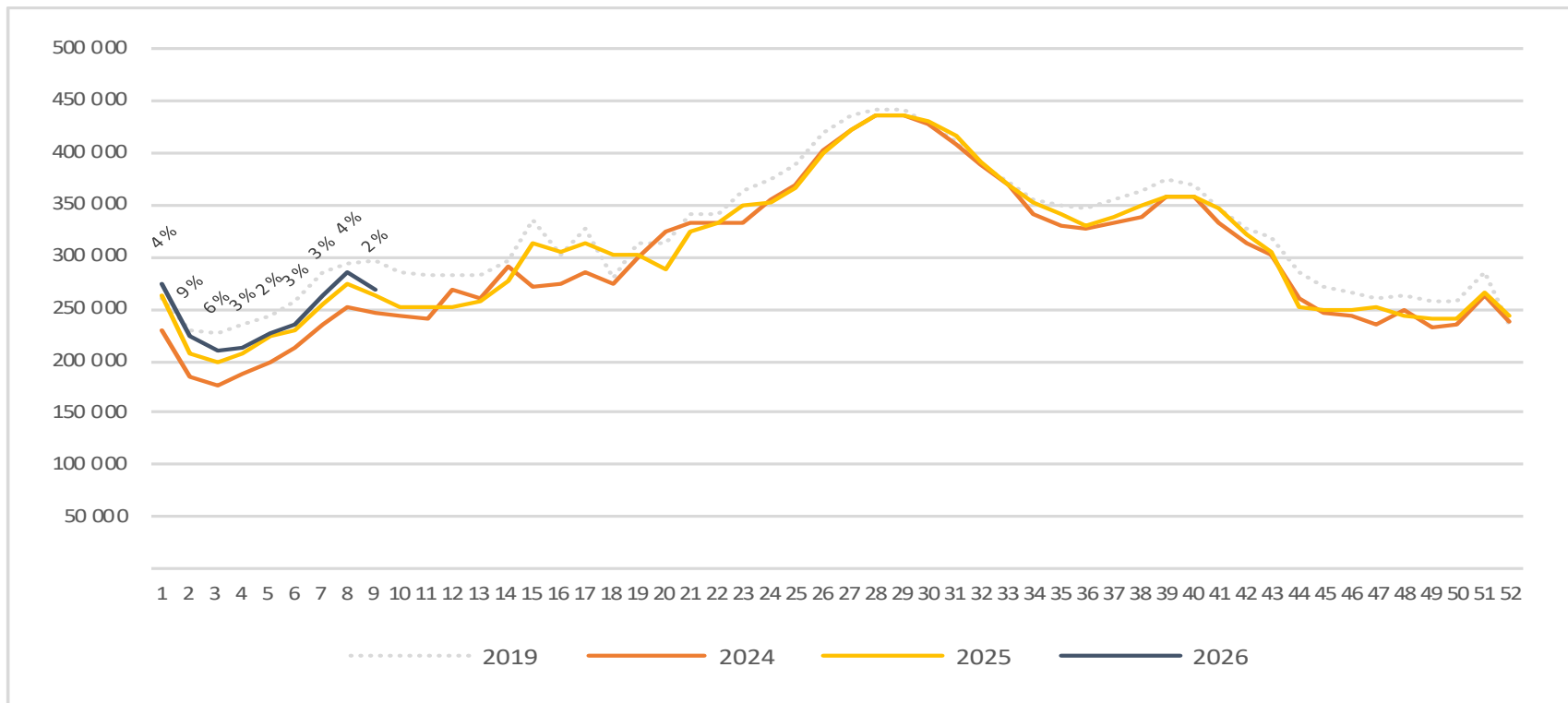
Passengers OSL total per week

The change is measured against the same week last year



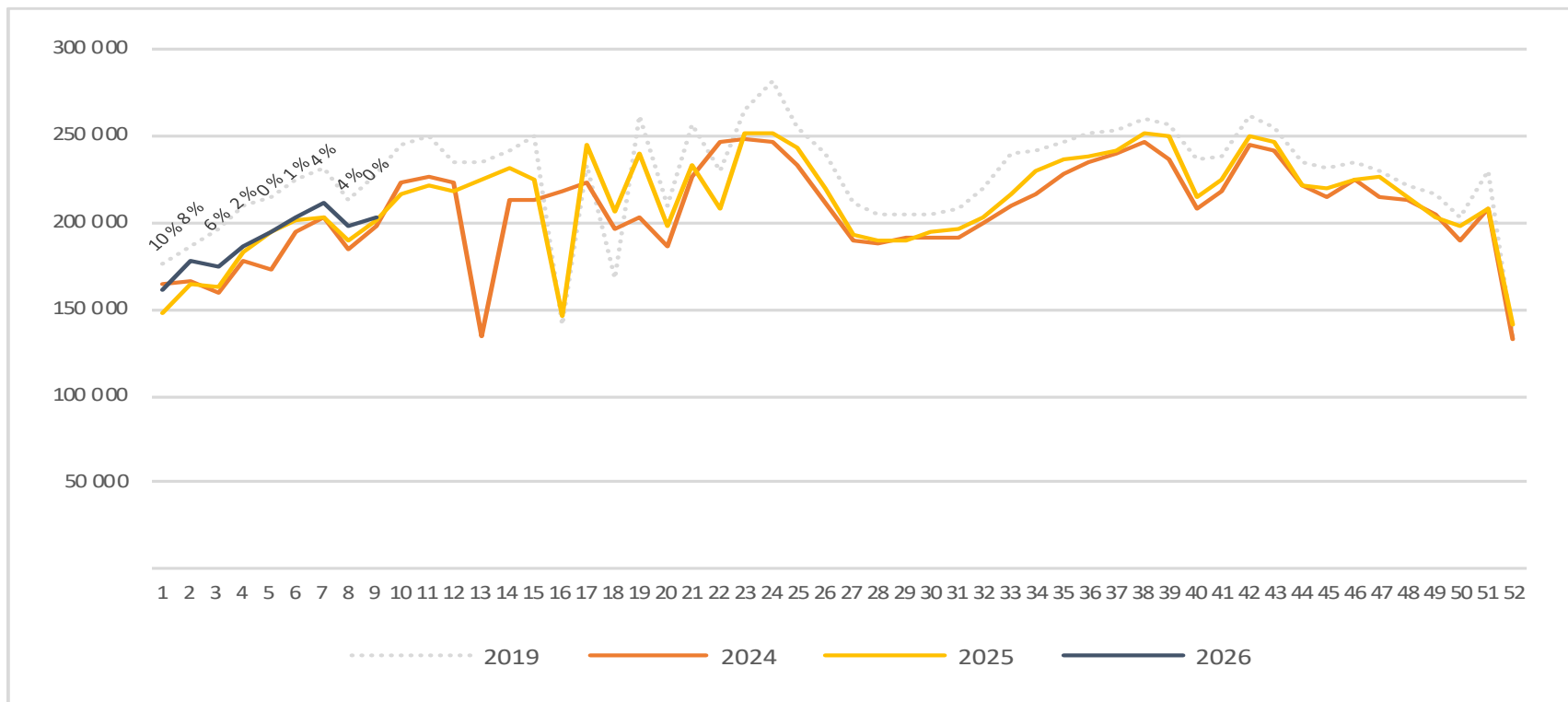
Passengers OSL international per week

The change is measured against the same week last year

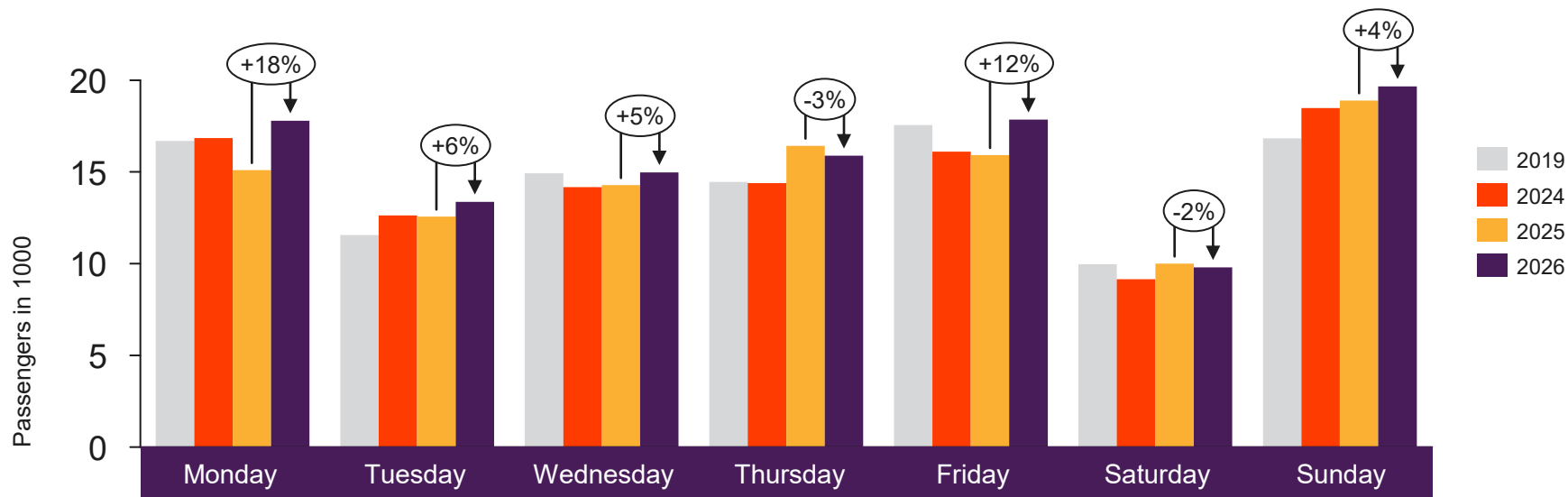


Passengers OSL domestic per week

The change is measured against the same week last year



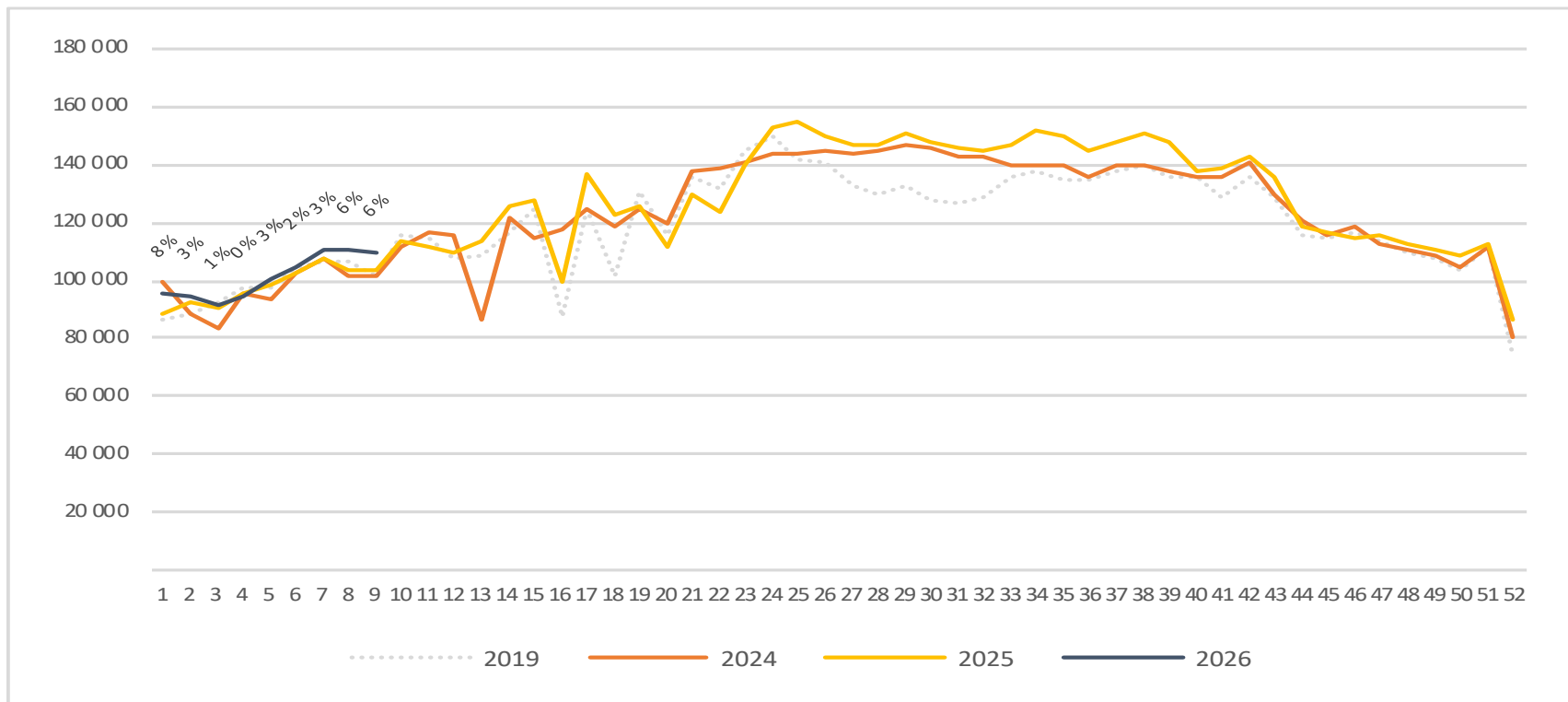
Passengers BGO total per day week 9



	Monday	Tuesday	Wednesday	Thursday	Friday	Saturday	Sunday
2019	16 686	11 557	14 929	14 454	17 558	9 978	16 825
2024	16 841	12 624	14 178	14 399	16 108	9 156	18 490
2025	15 094	12 564	14 286	16 421	15 916	10 003	18 895
2026	17 797	13 373	14 979	15 886	17 851	9 801	19 665

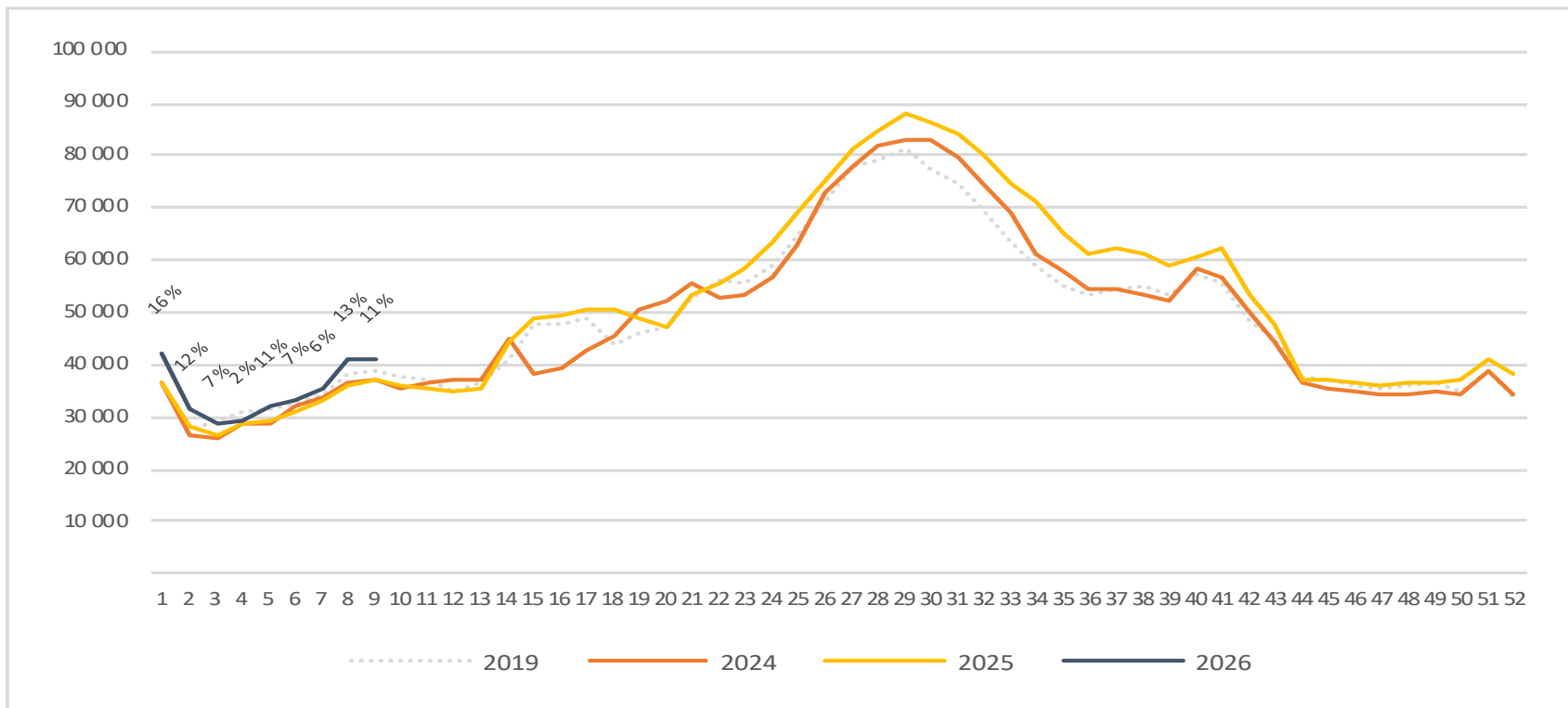
Passengers BGO total per week

The change is measured against the same week last year



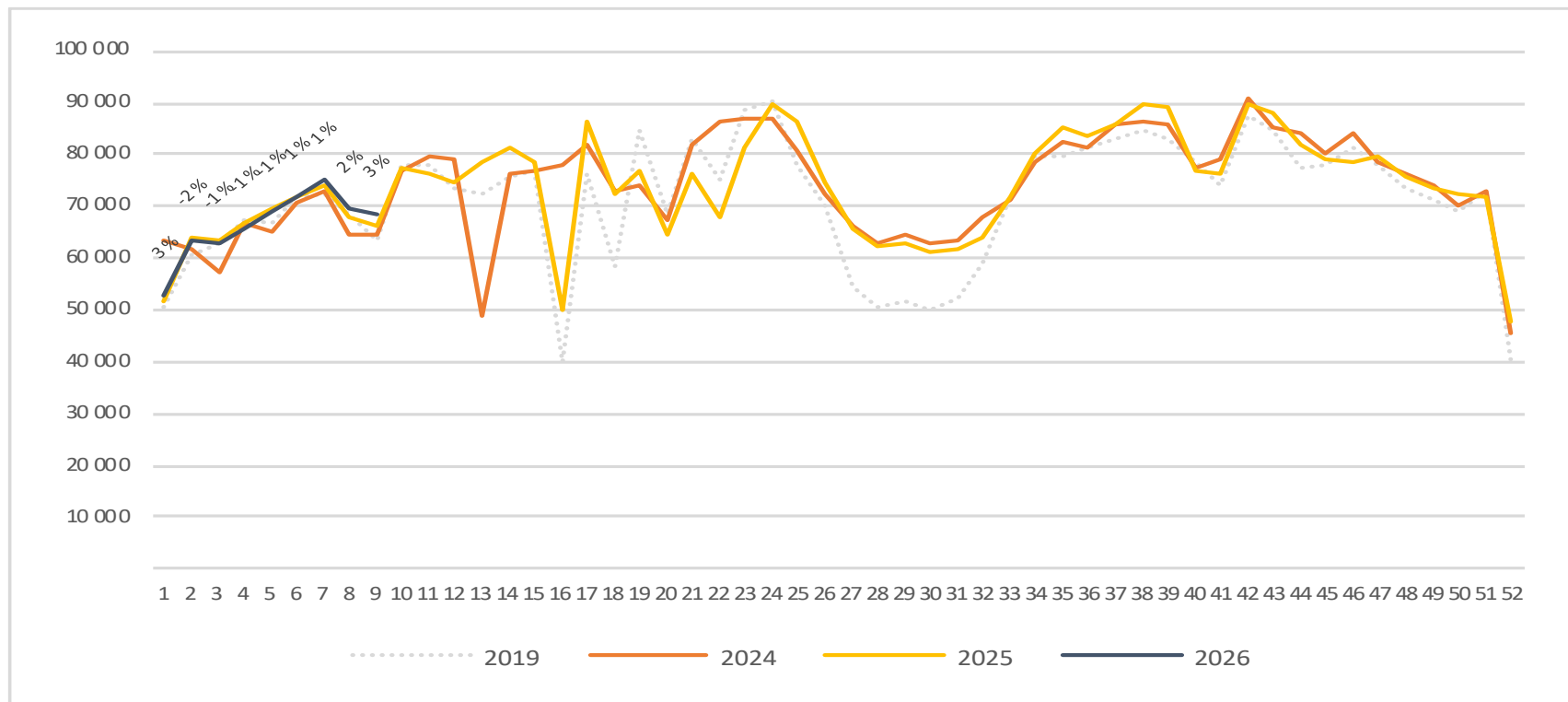
Passengers BGO international per week

The change is measured against the same week last year

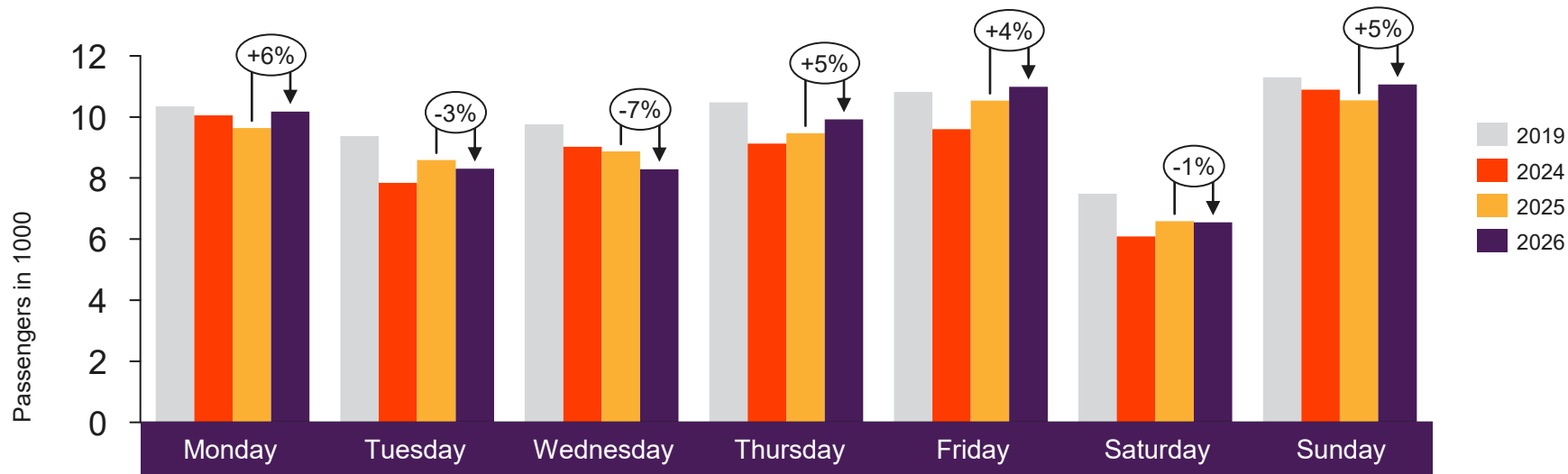


Passengers BGO domestic per week

The change is measured against the same week last year



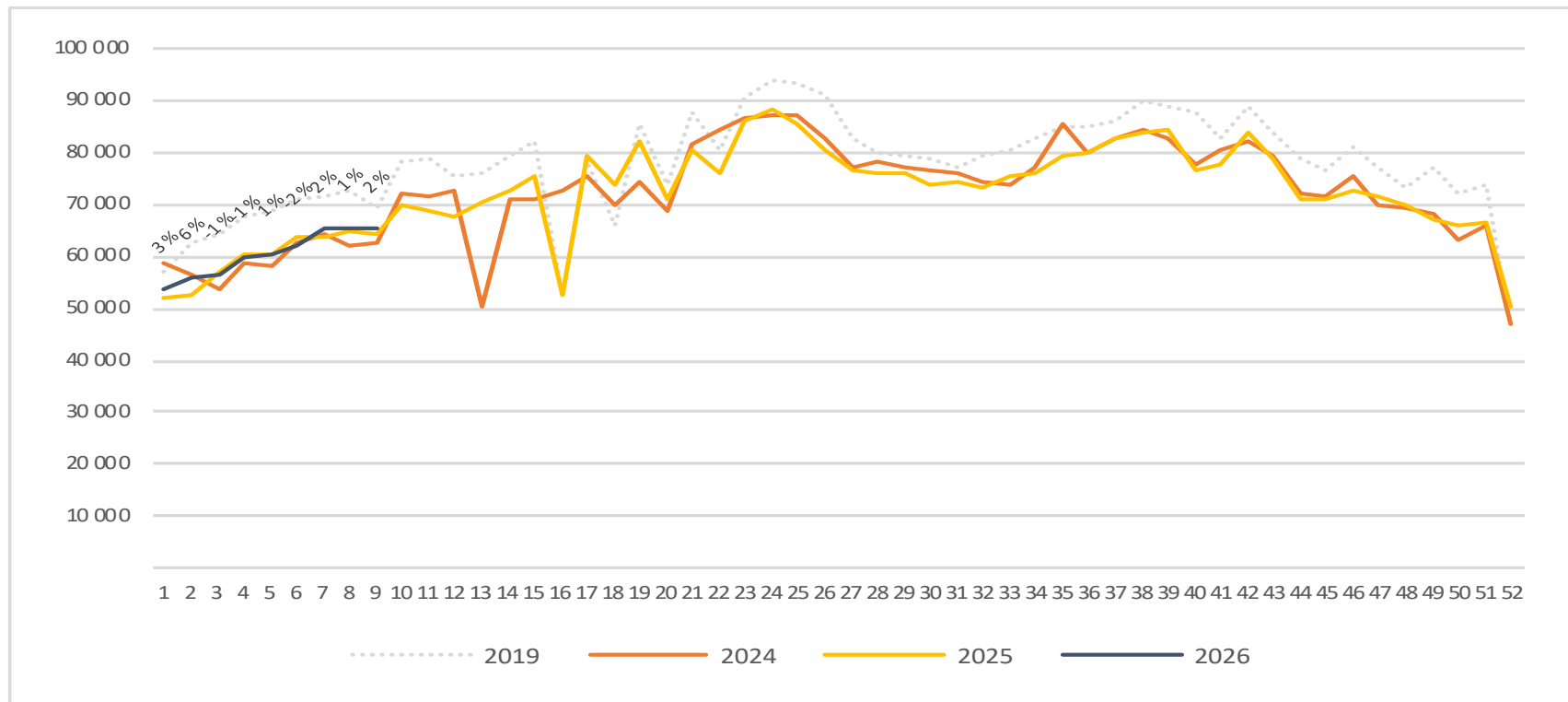
Passengers SVG total per day week 9



	Monday	Tuesday	Wednesday	Thursday	Friday	Saturday	Sunday
2019	10 347	9 369	9 758	10 473	10 820	7 488	11 300
2024	10 052	7 846	9 026	9 124	9 599	6 090	10 897
2025	9 638	8 585	8 873	9 471	10 532	6 587	10 542
2026	10 179	8 305	8 290	9 918	10 987	6 545	11 061

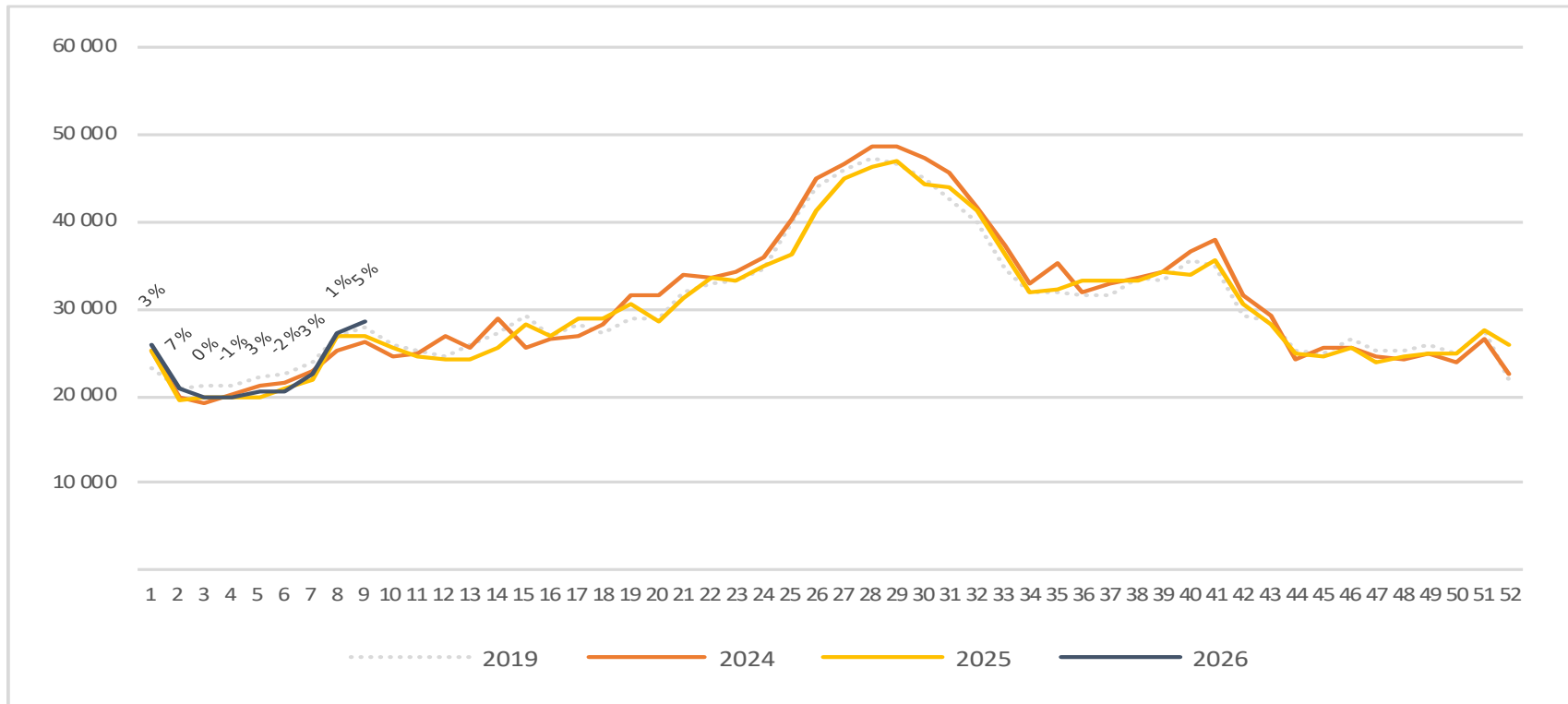
Passengers SVG total per week

The change is measured against the same week last year



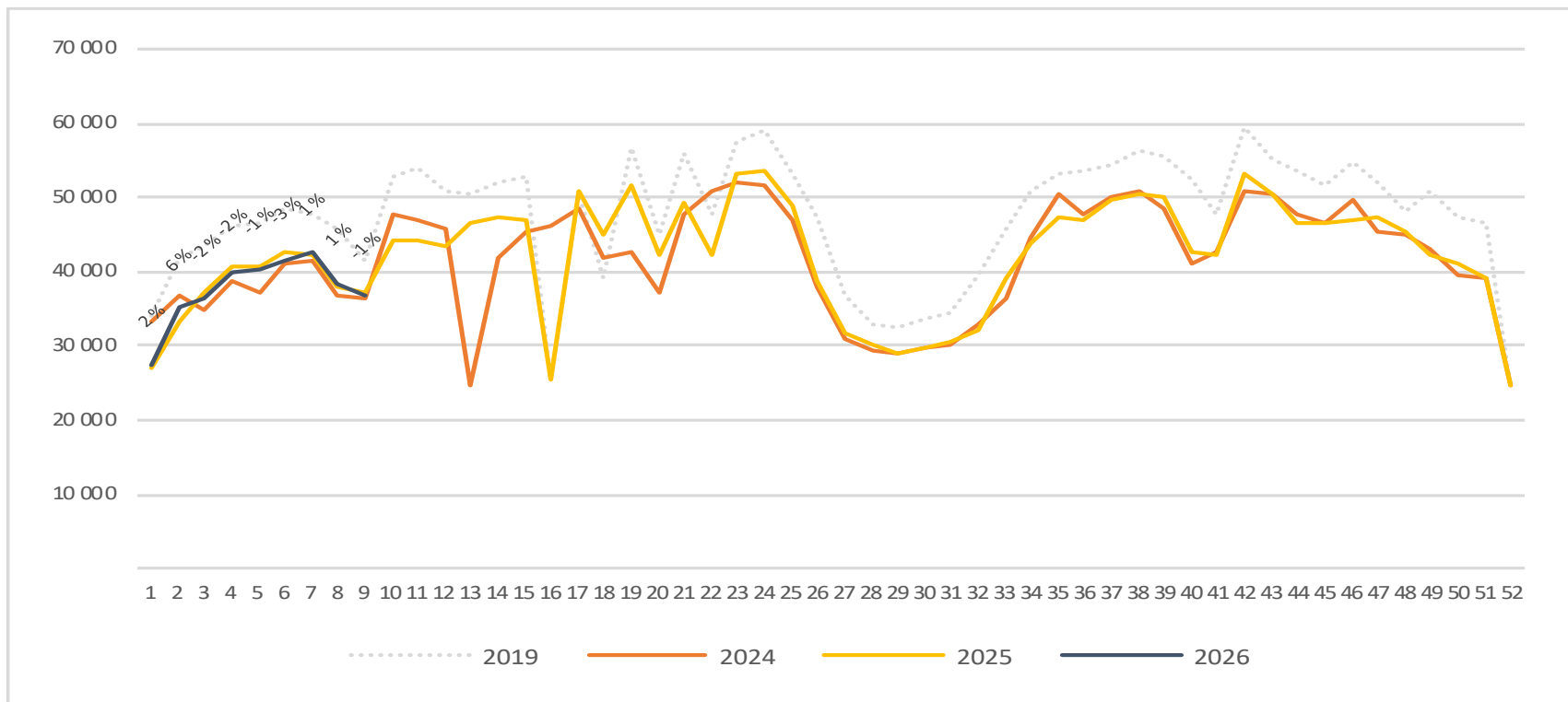
Passengers SVG international per week

The change is measured against the same week last year

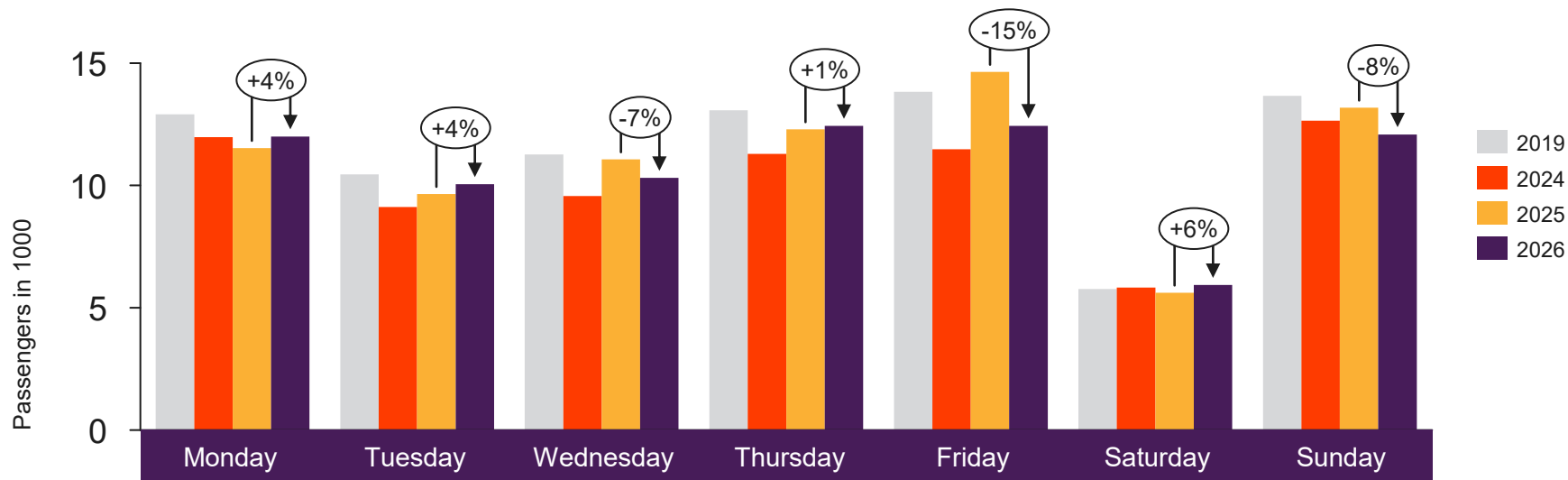


Passengers SVG domestic per week

The change is measured against the same week last year



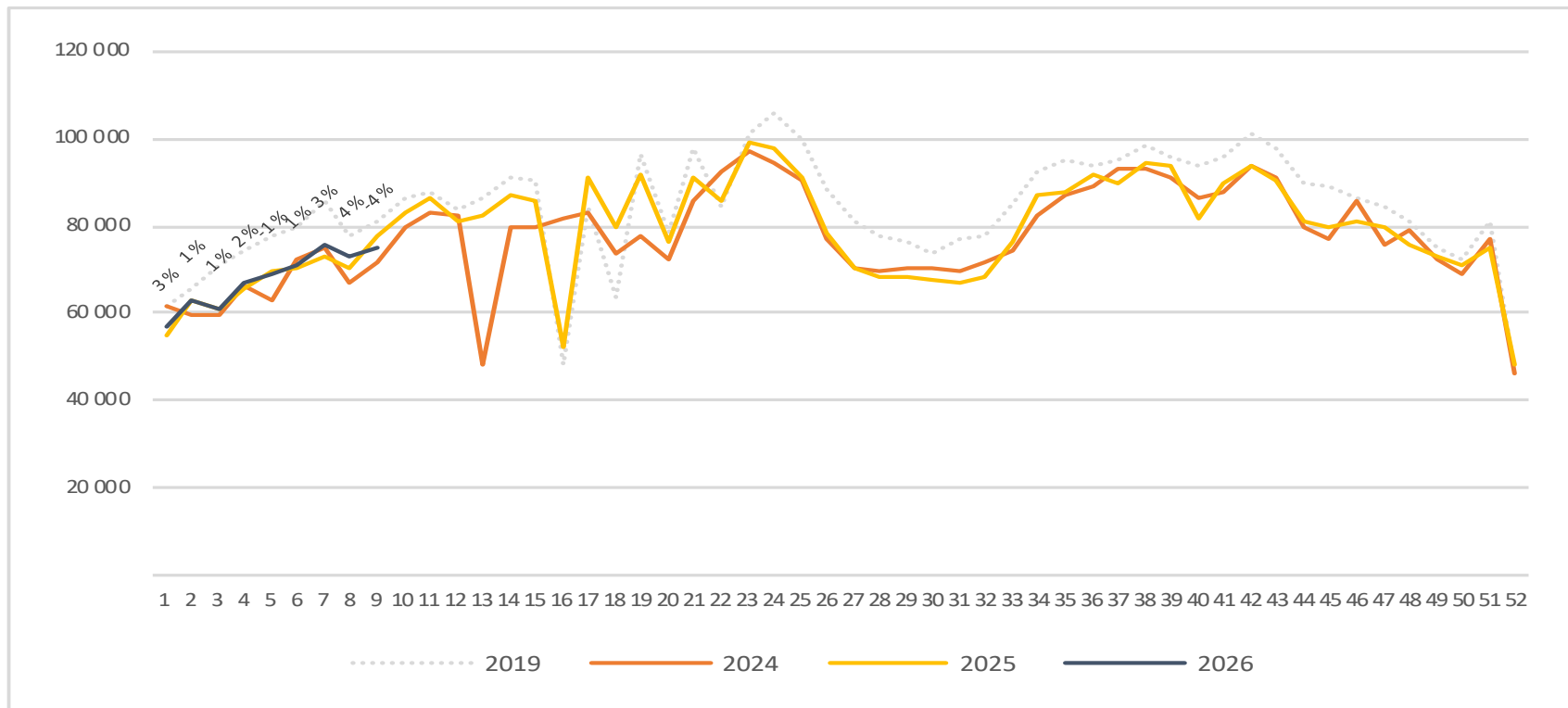
Passengers TRD total per day week 9



	Monday	Tuesday	Wednesday	Thursday	Friday	Saturday	Sunday
2019	12 904	10 450	11 270	13 078	13 833	5 764	13 669
2024	11 978	9 116	9 563	11 296	11 475	5 824	12 644
2025	11 532	9 647	11 061	12 295	14 645	5 614	13 178
2026	11 999	10 046	10 307	12 432	12 438	5 929	12 086

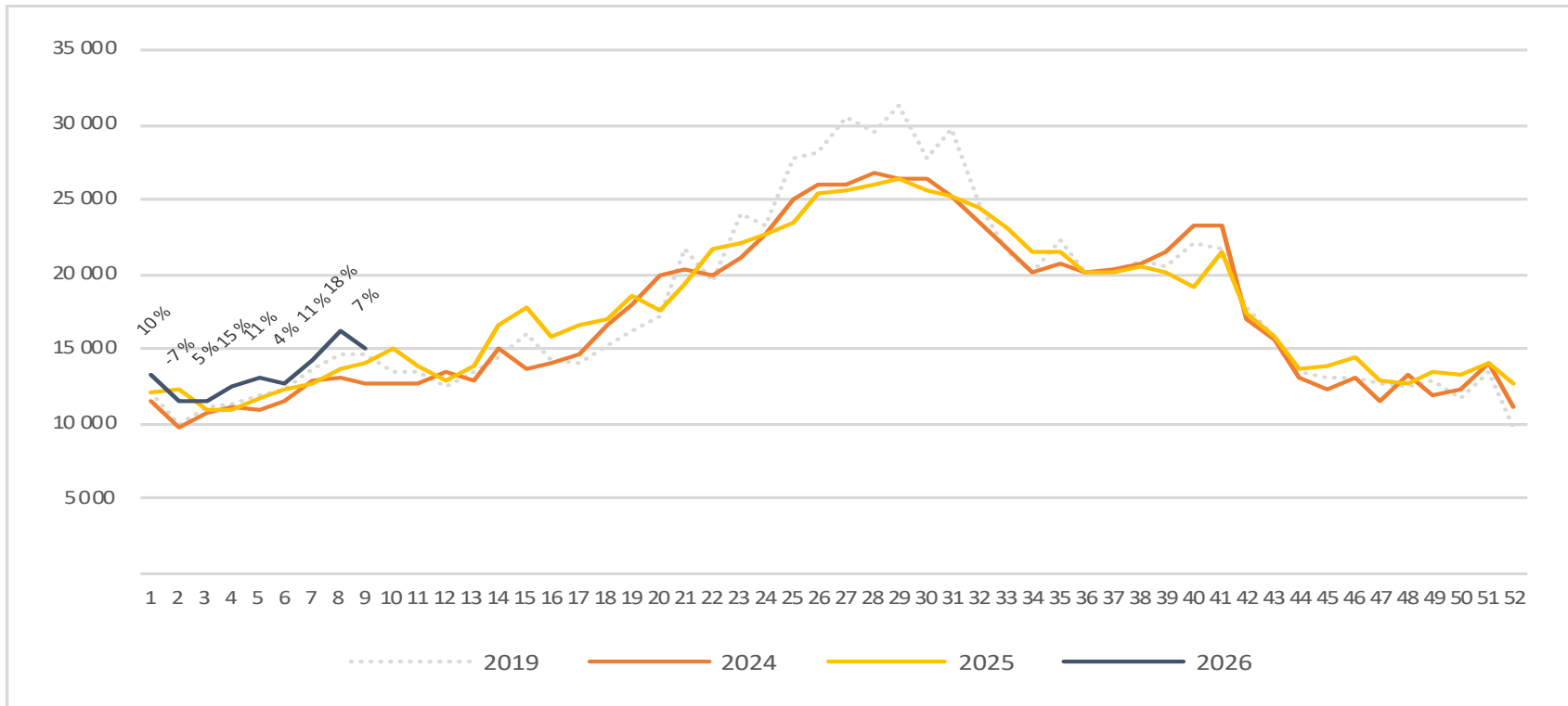
Passengers TRD total per week

The change is measured against the same week last year



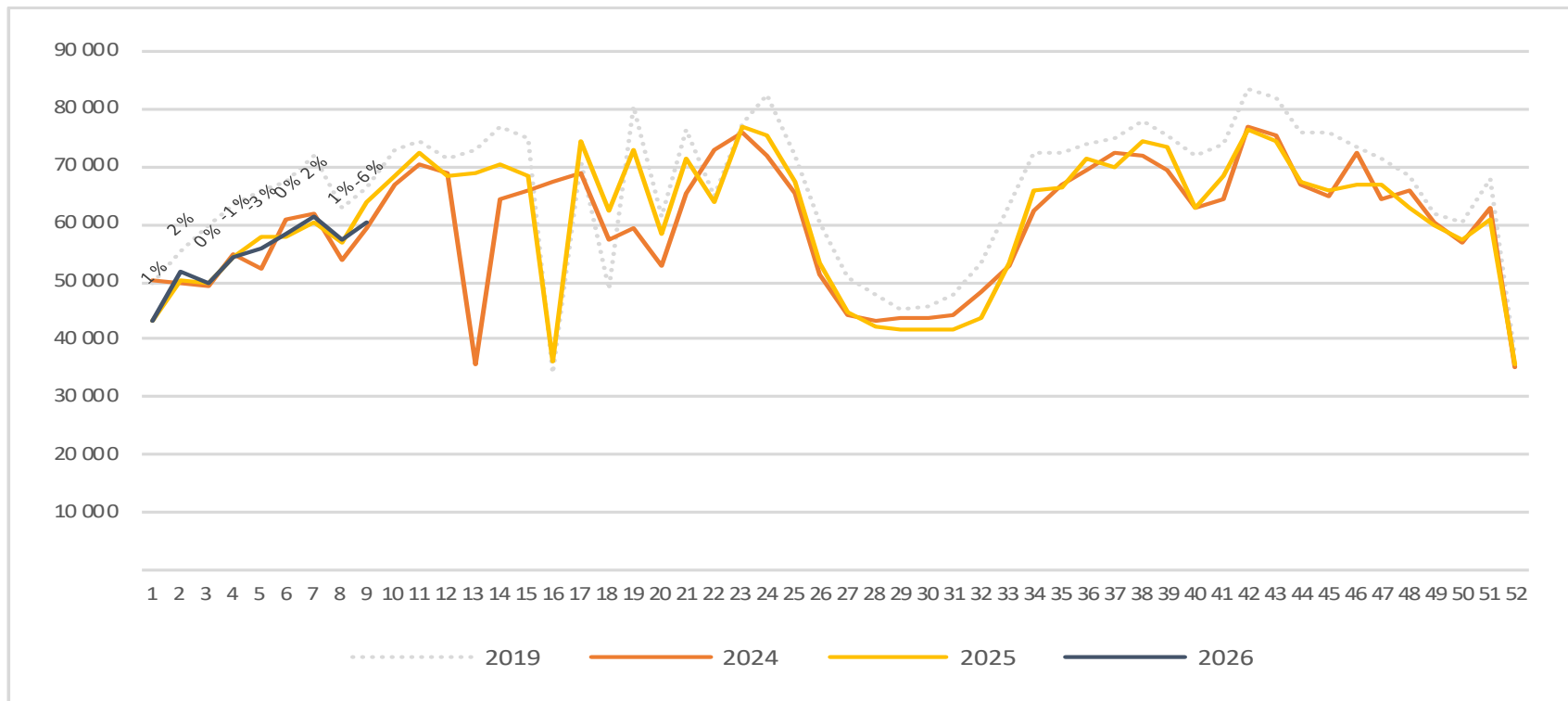
Passengers TRD international per week

The change is measured against the same week last year

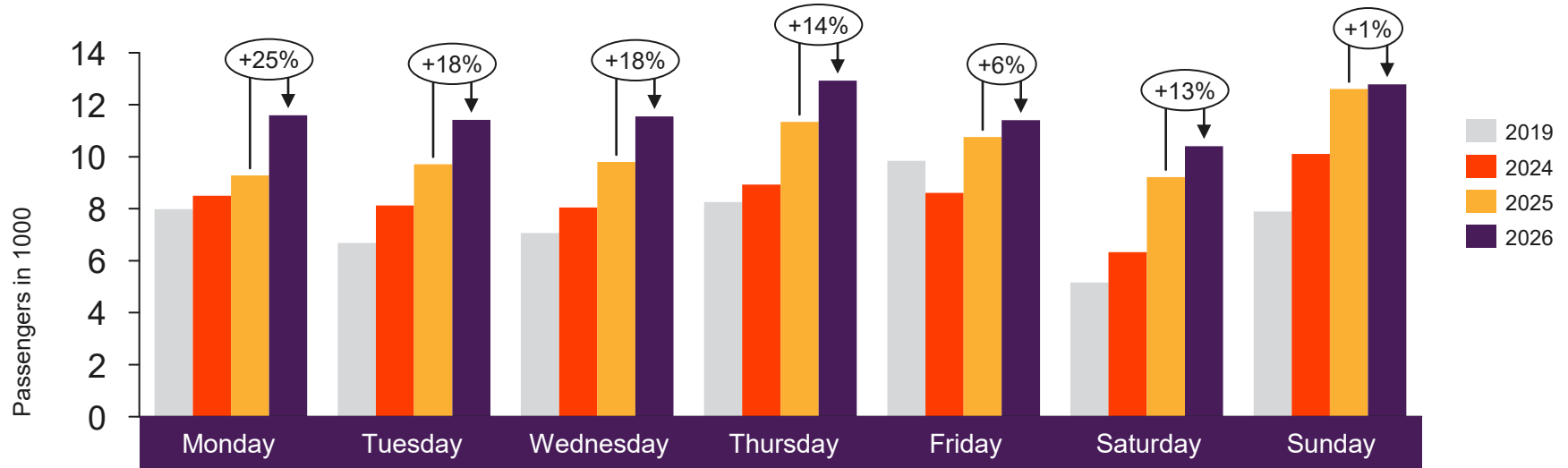


Passengers TRD domestic per week

The change is measured against the same week last year



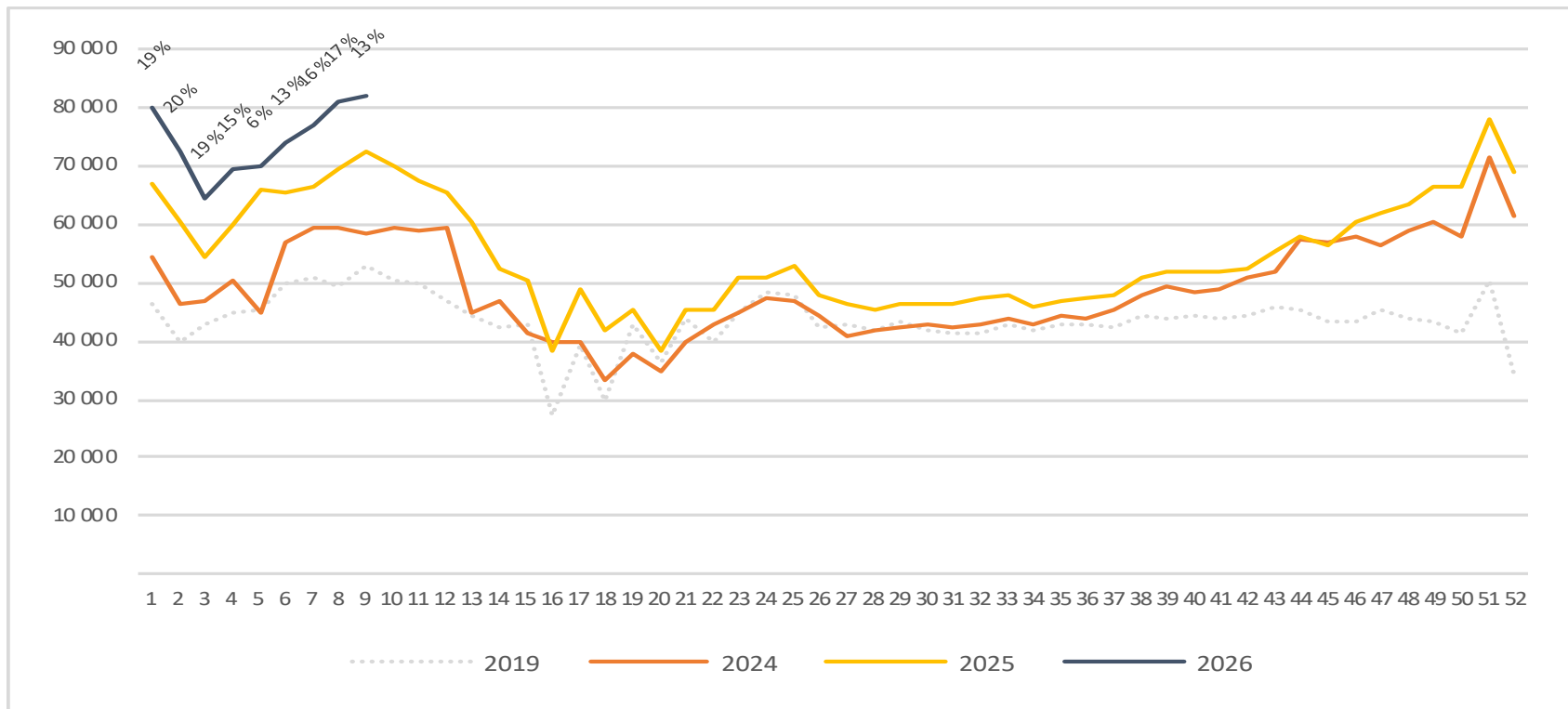
Passengers TOS total per day week 9



2019	7 985	6 680	7 068	8 256	9 841	5 162	7 890
2024	8 498	8 122	8 046	8 934	8 611	6 334	10 106
2025	9 284	9 714	9 805	11 346	10 760	9 221	12 610
2026	11 592	11 418	11 552	12 927	11 412	10 409	12 782

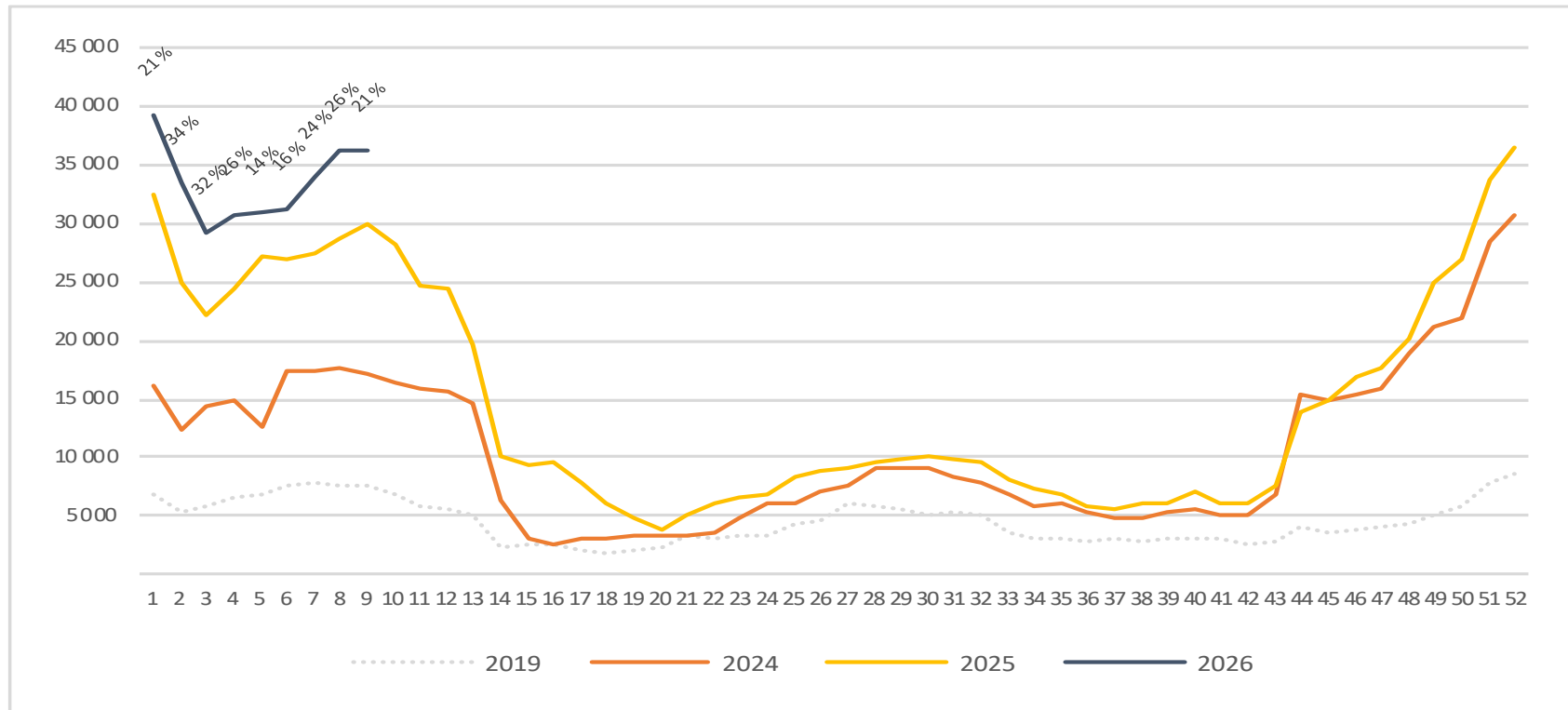
Passengers TOS total per week

The change is measured against the same week last year



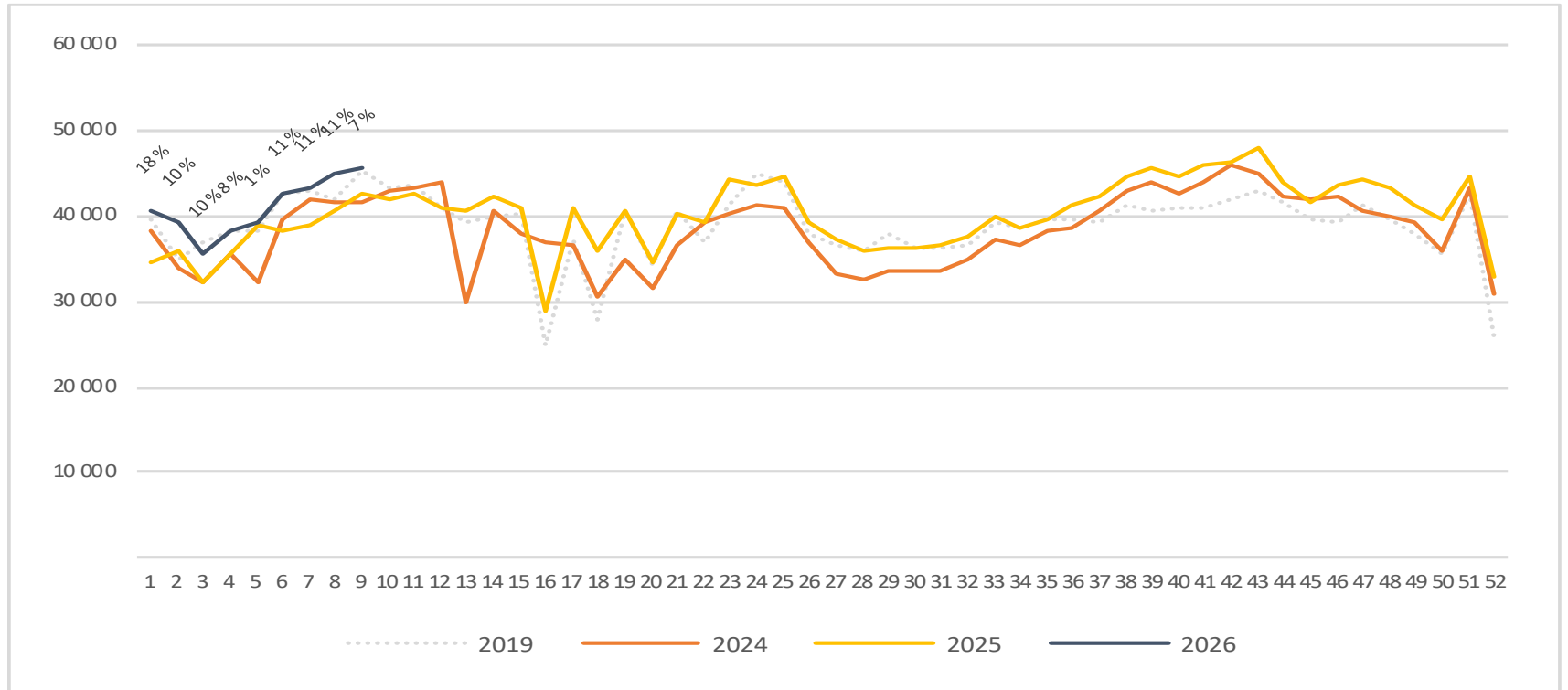
Passengers TOS international per week

The change is measured against the same week last year



Passengers TOS domestic per week

The change is measured against the same week last year



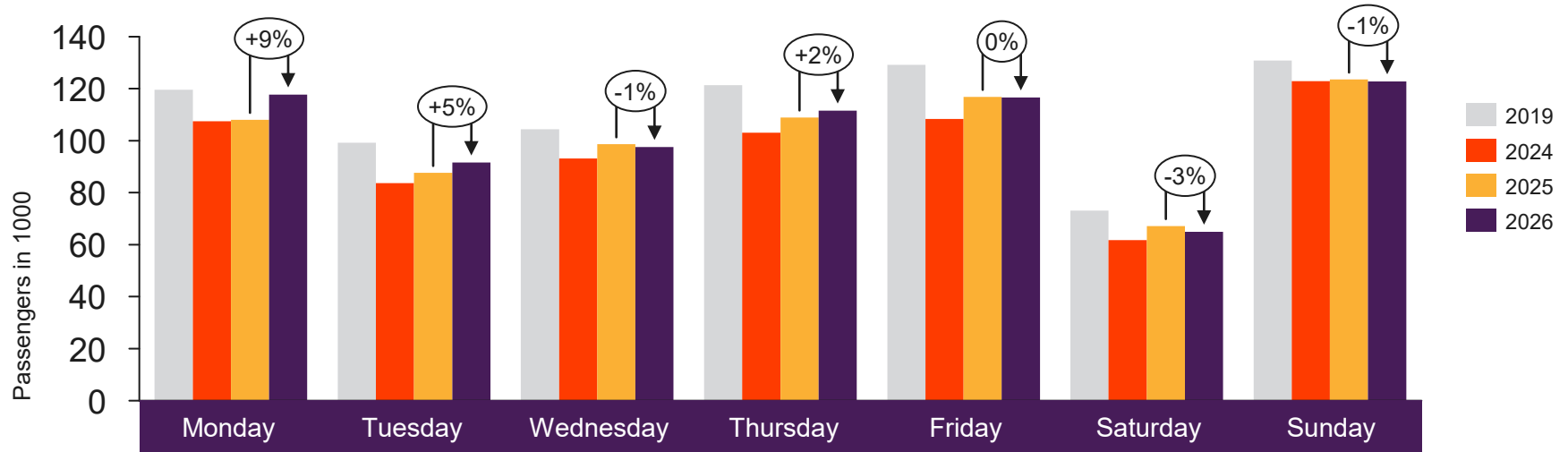


[Return to content
page](#)

Top 4 airports

Total passenger numbers from Oslo, Bergen, Stavanger and
Trondheim

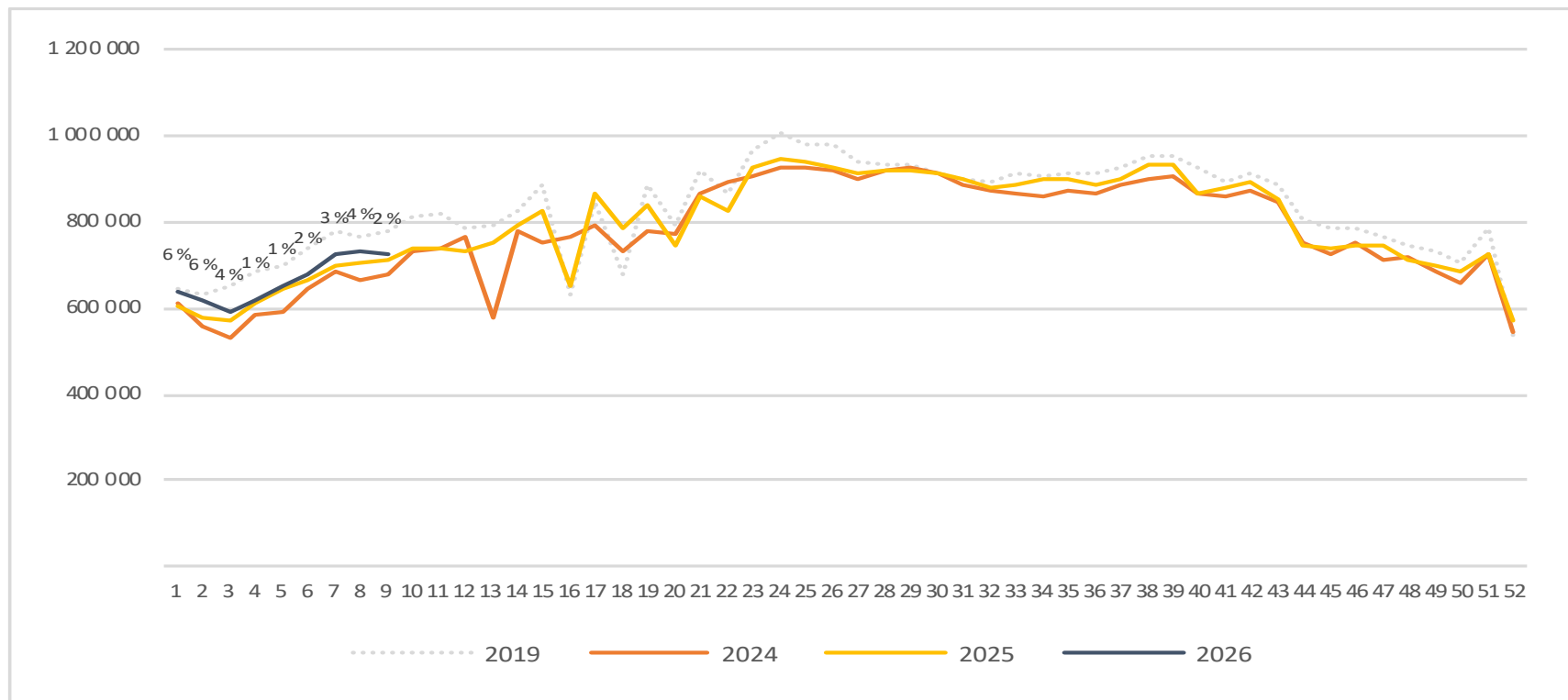
Passengers top 4 airports total per day week 9



	Monday	Tuesday	Wednesday	Thursday	Friday	Saturday	Sunday
2019	119 644	99 254	104 431	121 396	129 220	73 054	130 814
2024	107 516	83 725	93 190	103 117	108 382	61 801	122 874
2025	108 025	87 614	98 619	108 920	116 865	67 158	123 509
2026	117 709	91 622	97 516	111 544	116 632	64 985	122 749

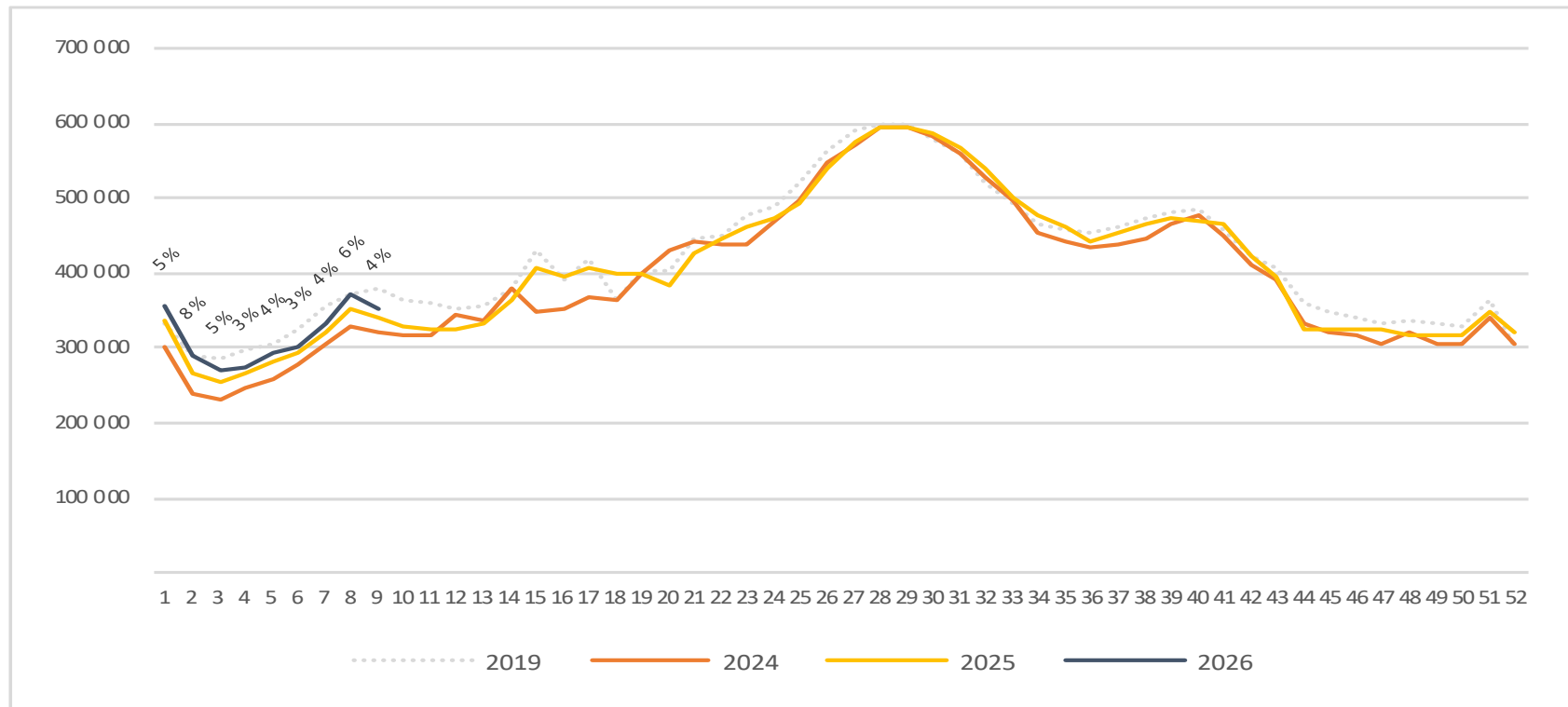
Passengers top 4 airports total per week

The change is measured against the same week last year



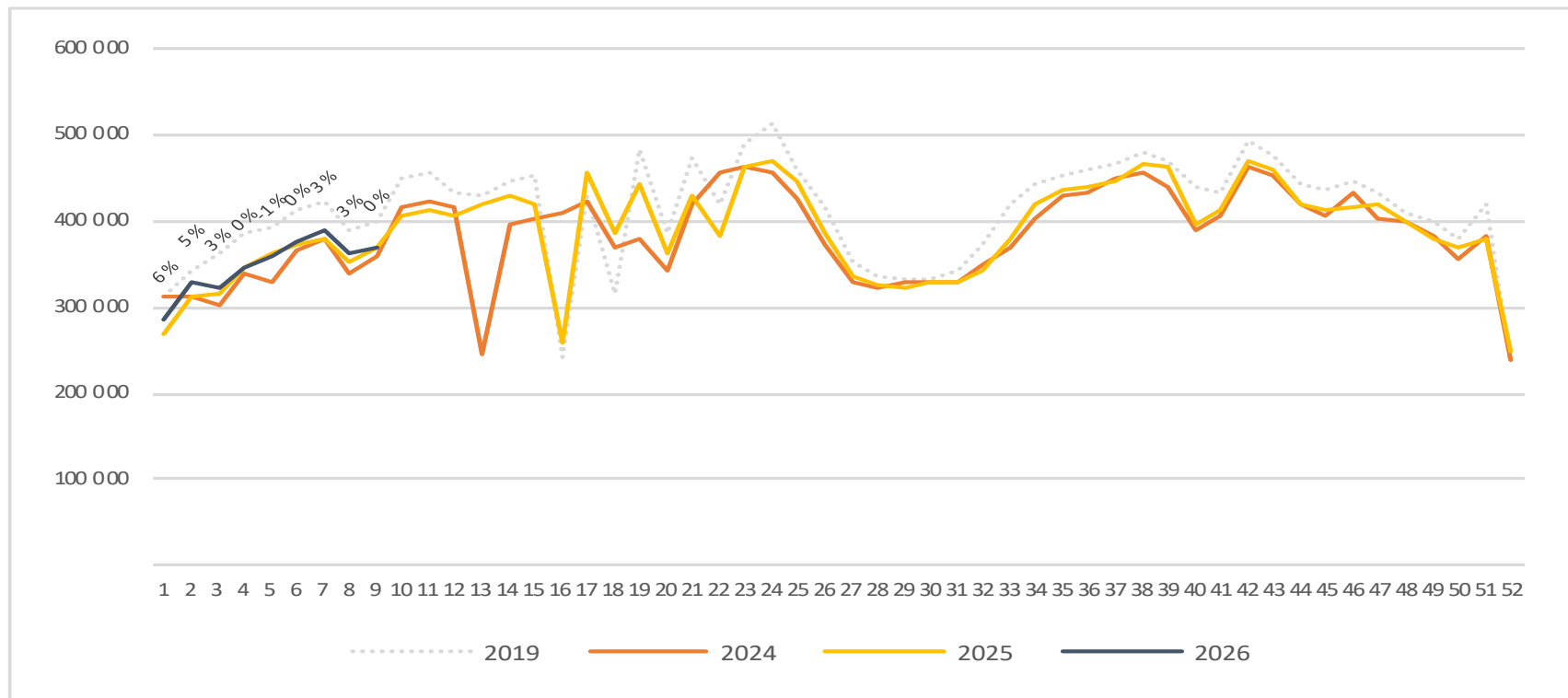
Passengers top 4 airports international per week

The change is measured against the same week last year



Passengers top 4 airports domestic per week

The change is measured against the same week last year



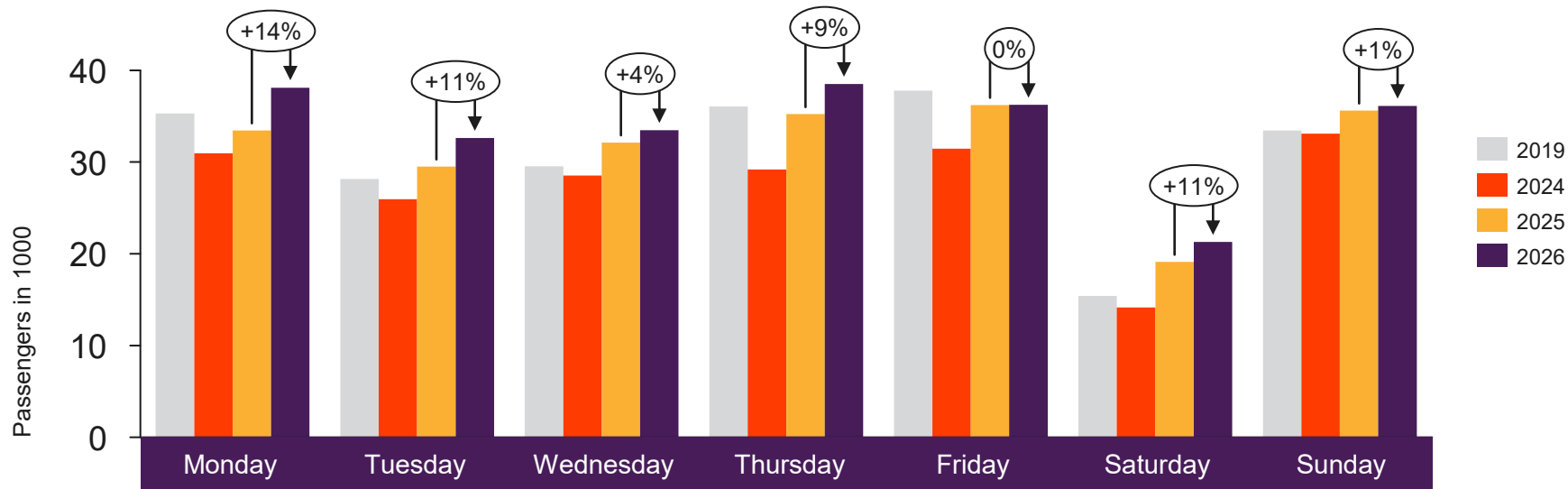


[Return to content page](#)

Regional and local airports

Total passenger numbers from Alta, Andenes, Bardufoss, Berlevåg, Bodø, Brønnøysund, Båtsfjord, Florø, Førde, Hammerfest, Harstad/Narvik, Hasvik, Honningsvåg, Kirkenes, Kristiansand, Kristiansund, Lakselv, Leknes, Mehamn, Mo i Rana, Molde, Mosjøen, Namsos, Røros, Rørvik, Røst, Sandane, Sandnessjøen, Sogndal, Stokmarknes, Svalbard, Svolvær, Sørkjosen, Tromsø, Vadsø, Vardø, Værøy, Ørsta-Volda and Ålesund

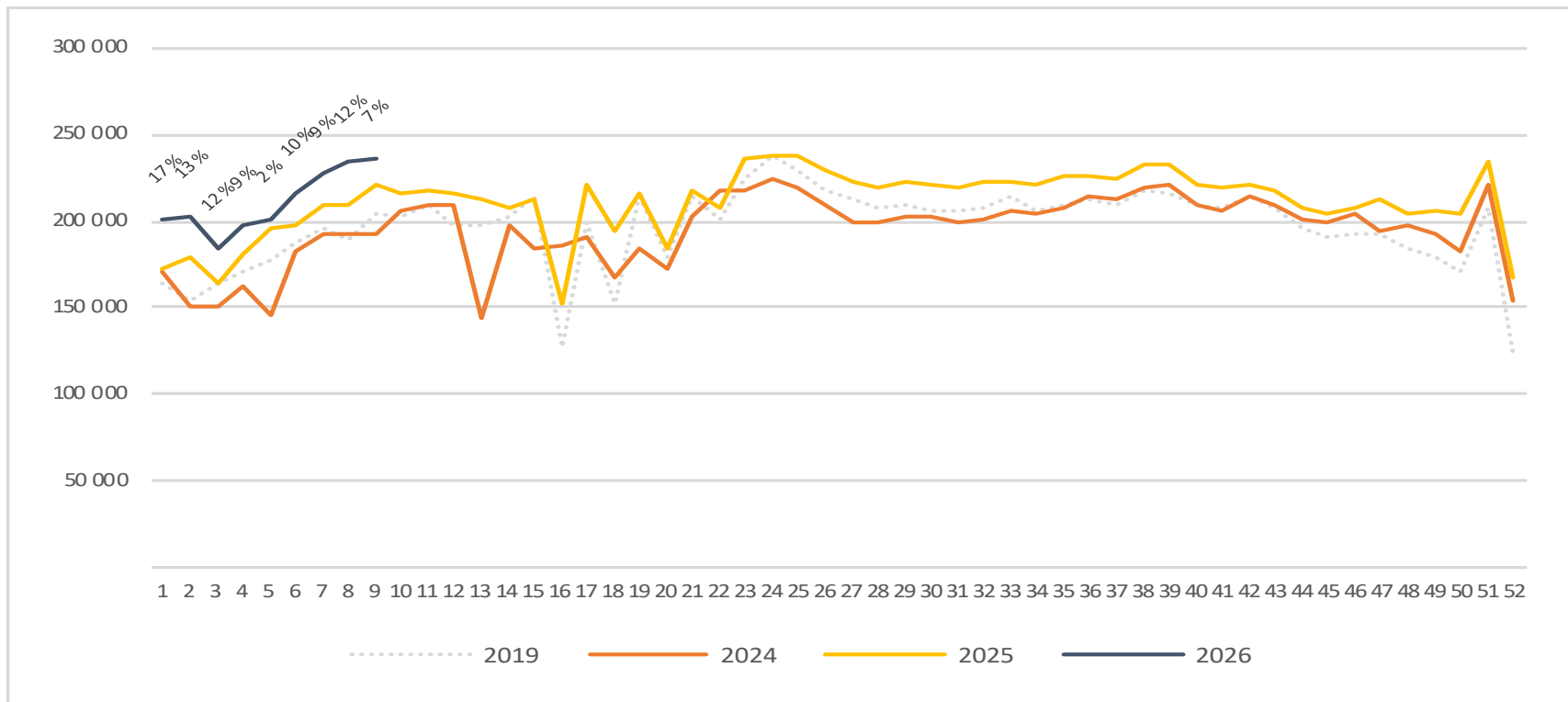
Passengers Regional and local airports total per day week 9



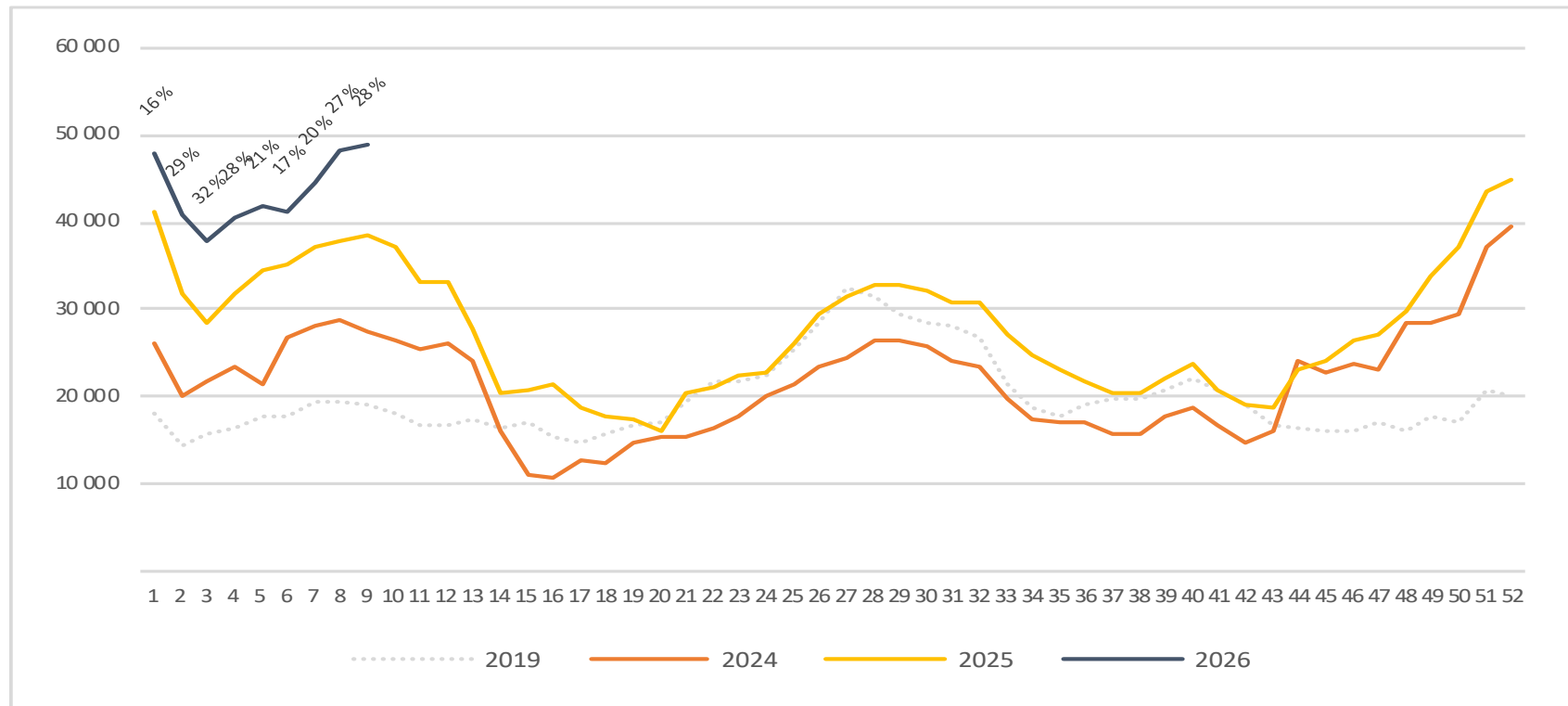
	Monday	Tuesday	Wednesday	Thursday	Friday	Saturday	Sunday
2019	35 311	28 154	29 552	36 057	37 786	15 410	33 436
2024	30 962	25 943	28 549	29 201	31 462	14 140	33 093
2025	33 454	29 498	32 130	35 226	36 217	19 111	35 614
2026	38 116	32 621	33 491	38 513	36 241	21 282	36 118

Passengers Regional and local airports total per week

The change is measured against the same week last year

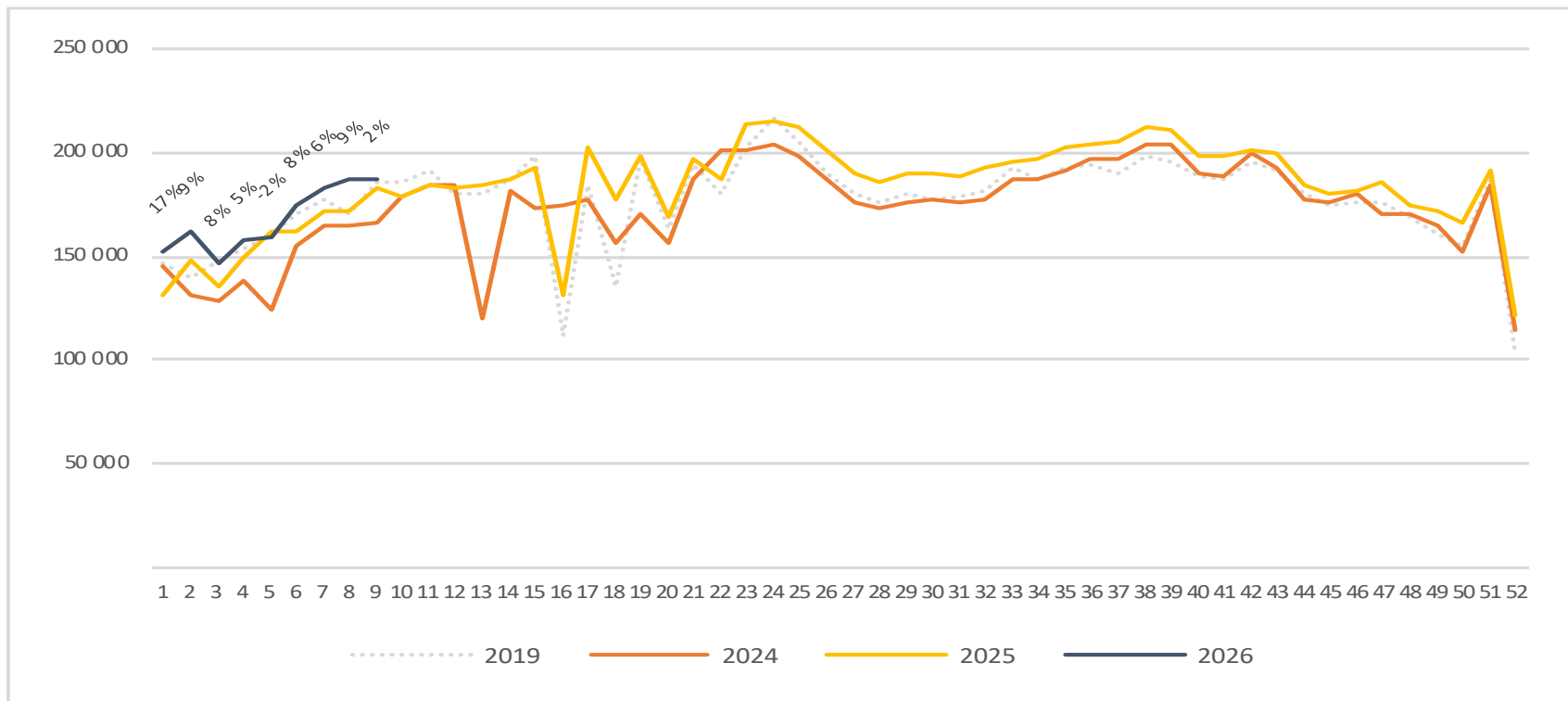


Passengers Regional and local airports international per week



Passengers Regional and local airports domestic per week

The change is measured against the same week last year



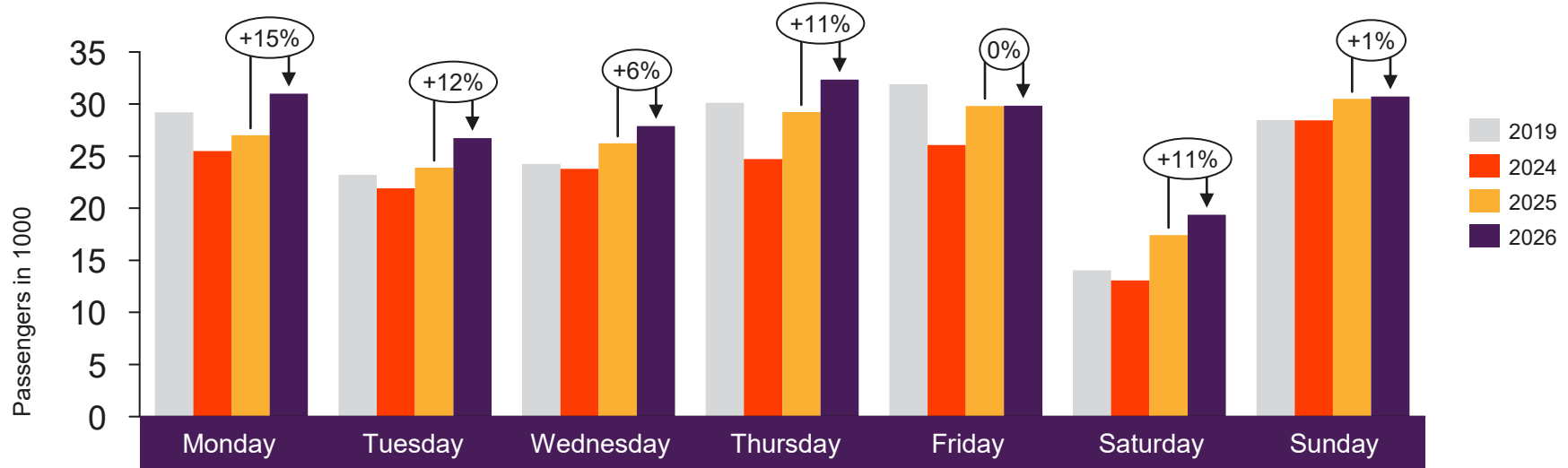


[Return to content
page](#)

Regional airports

Total passenger numbers from Alta, Bodø, Harstad/Narvik, Kirkenes, Kristiansand, Kristiansund, Molde, Svalbard, Tromsø and Ålesund

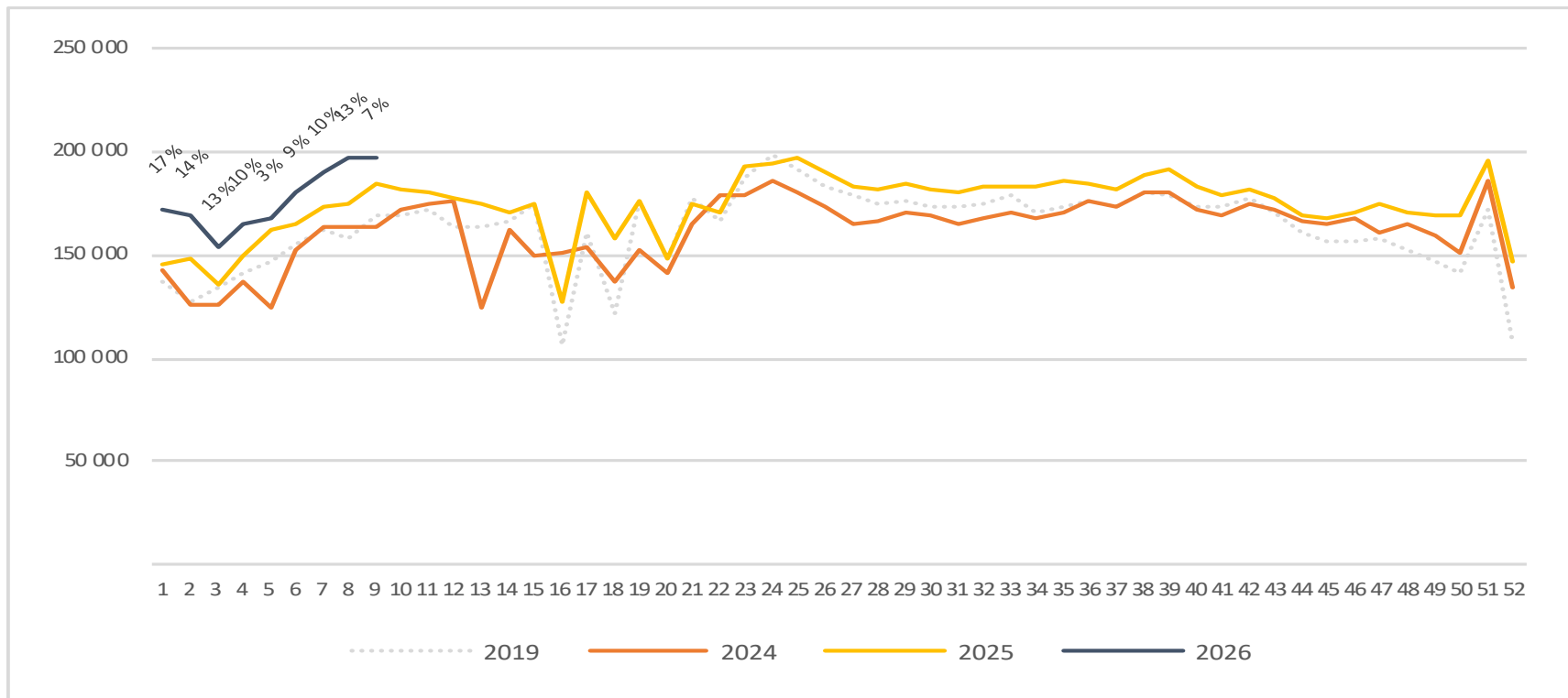
Passengers Regional airports total per day week 9



	Monday	Tuesday	Wednesday	Thursday	Friday	Saturday	Sunday
2019	29 202	23 195	24 260	30 130	31 901	14 029	28 457
2024	25 501	21 924	23 786	24 715	26 057	13 066	28 451
2025	27 000	23 893	26 222	29 231	29 827	17 429	30 505
2026	30 987	26 731	27 880	32 359	29 856	19 366	30 730

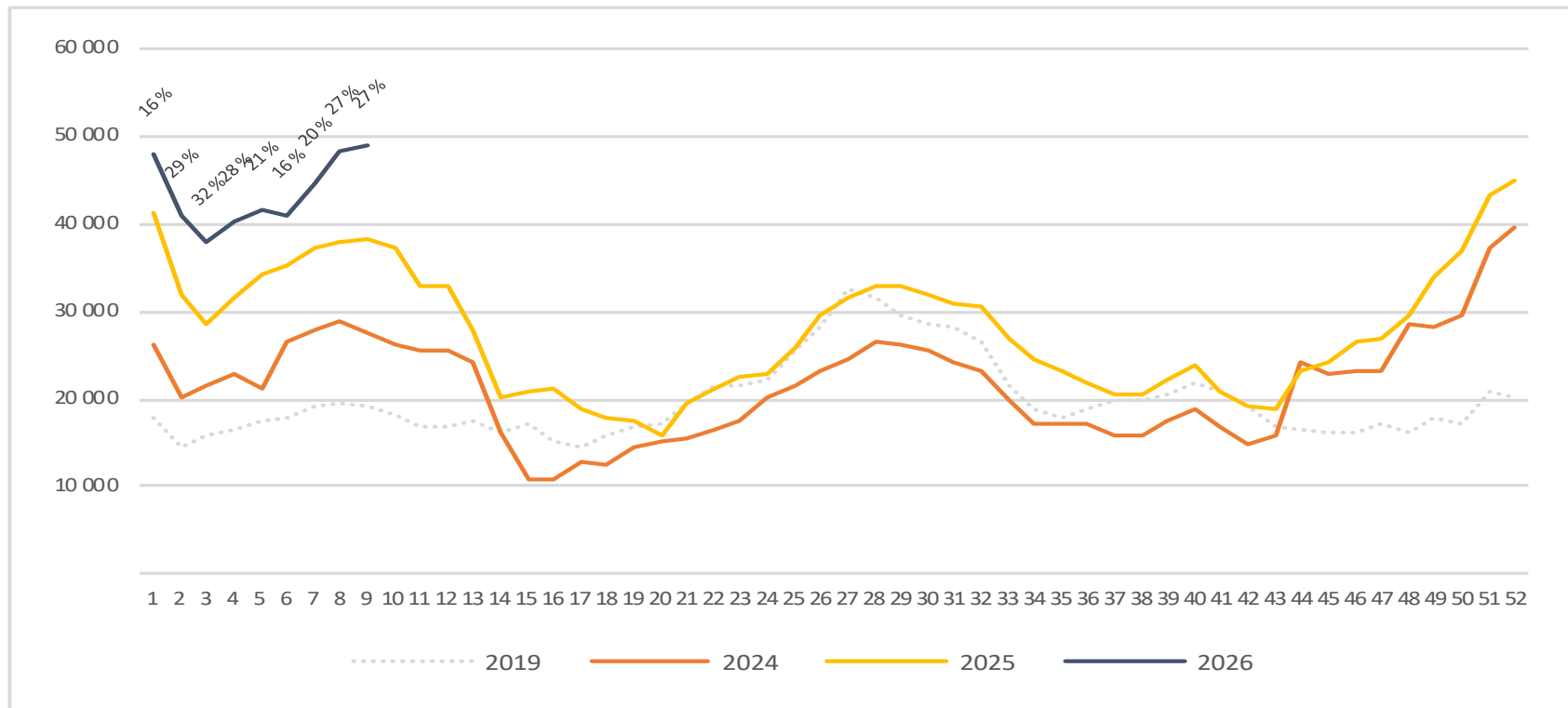
Passengers Regional airports total per week

The change is measured against the same week last year



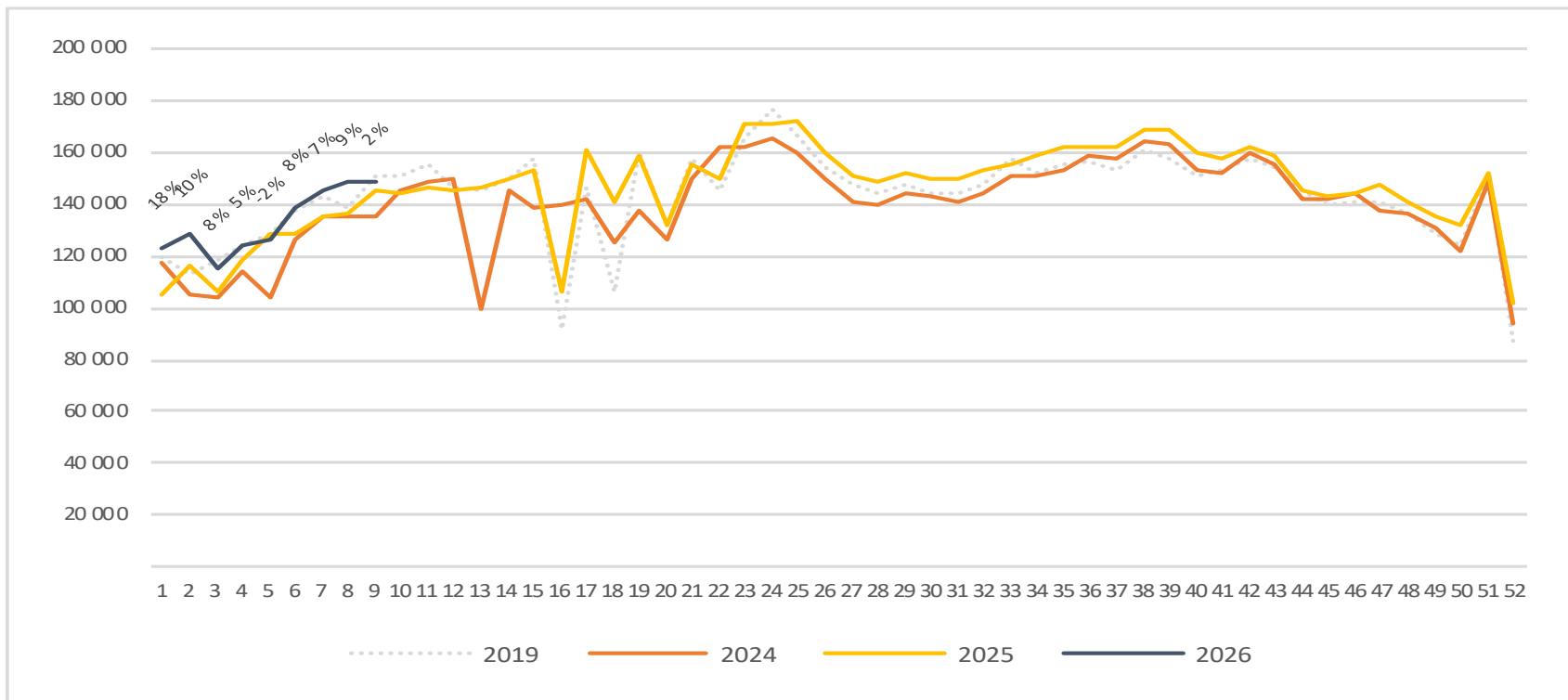
Passengers Regional airports international per week

The change is measured against the same week last year



Passengers Regional airports domestic per week

The change is measured against the same week last year



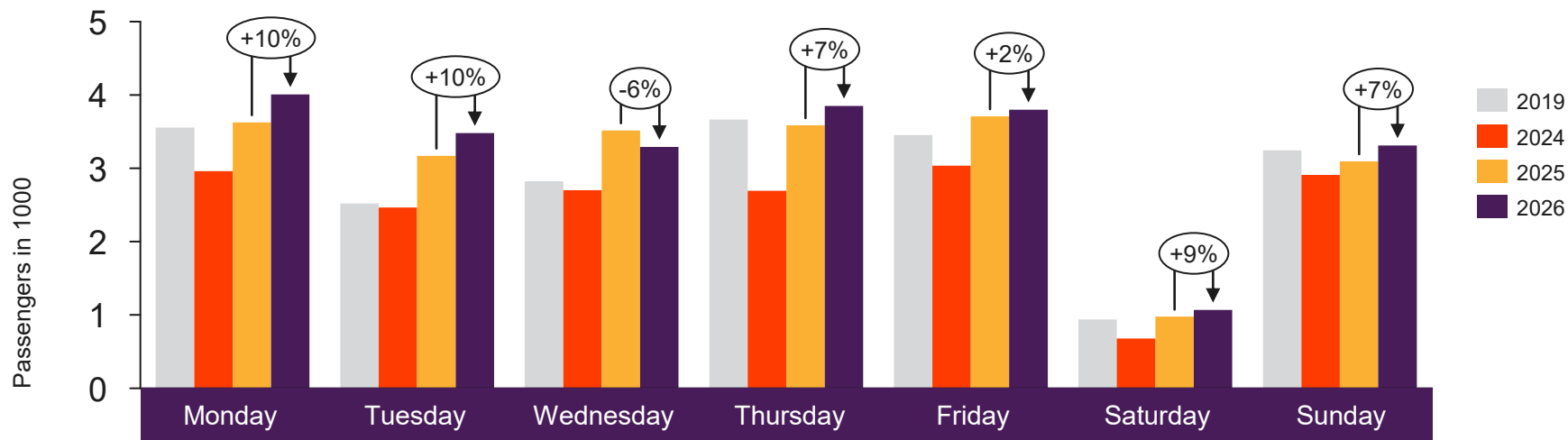


[Return to content
page](#)

Local Airports in Trøndelag and Nordland (Local Mid airports)

Total passenger numbers from Andenes, Bardufoss, Brønnøysund, Leknes, Mo i Rana, Mosjøen, Namsos, Rørvik, Røst, Sandnessjøen, Stokmarknes, Svolvær and Værøy

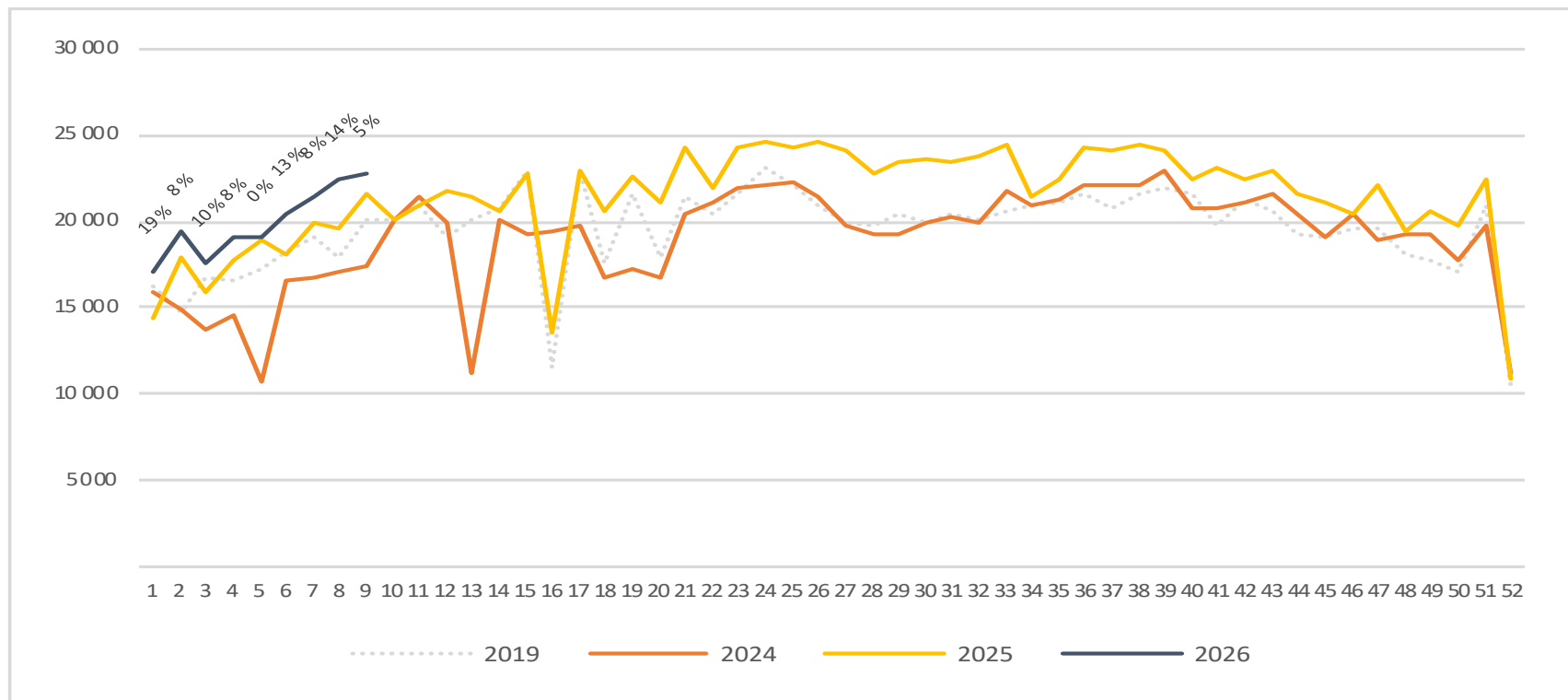
Passengers Local Mid airports total per day week 9



	Monday	Tuesday	Wednesday	Thursday	Friday	Saturday	Sunday
2019	3 554	2 522	2 823	3 665	3 451	937	3 244
2024	2 960	2 464	2 703	2 693	3 037	679	2 909
2025	3 627	3 171	3 517	3 586	3 707	977	3 093
2026	4 007	3 481	3 290	3 851	3 799	1 069	3 310

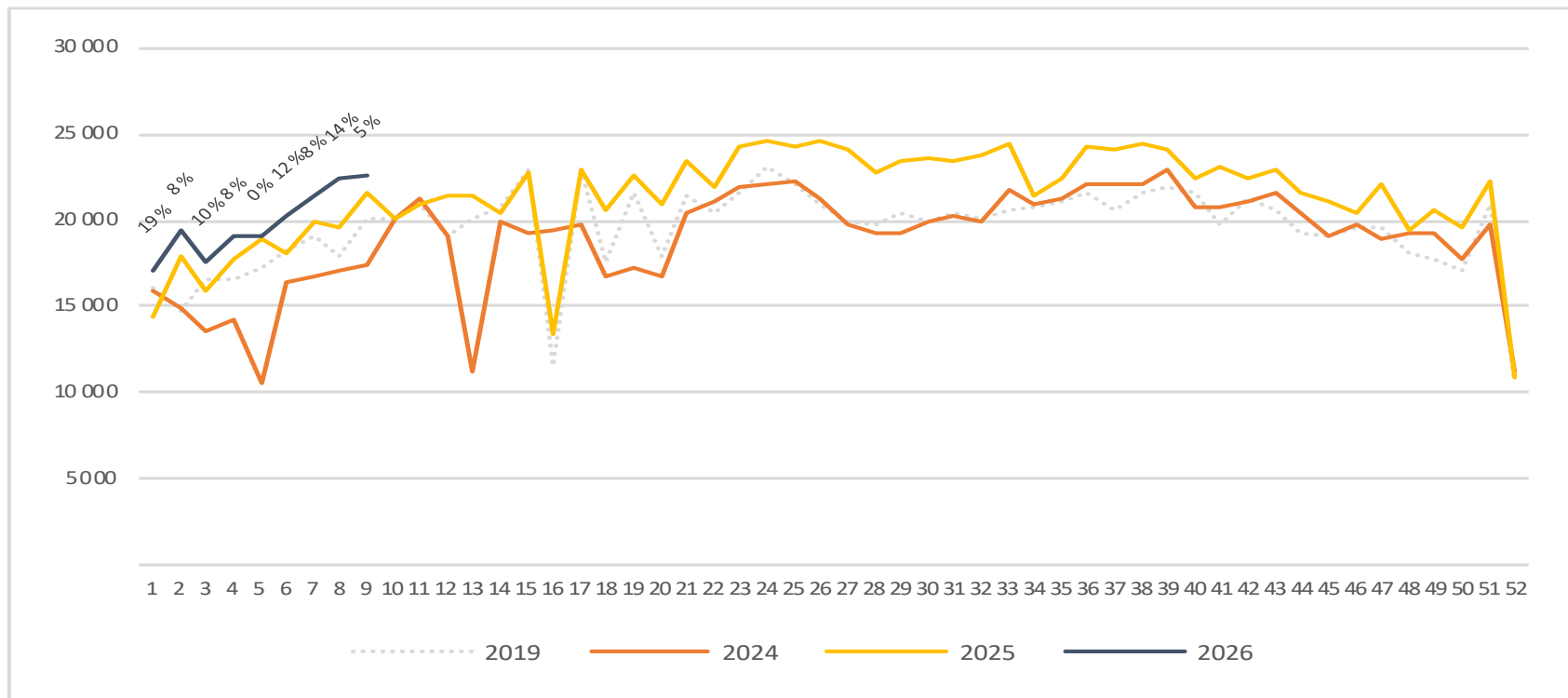
Passengers Local Mid airports total per week

The change is measured against the same week last year



Passengers Local Mid airports domestic per week

The change is measured against the same week last year



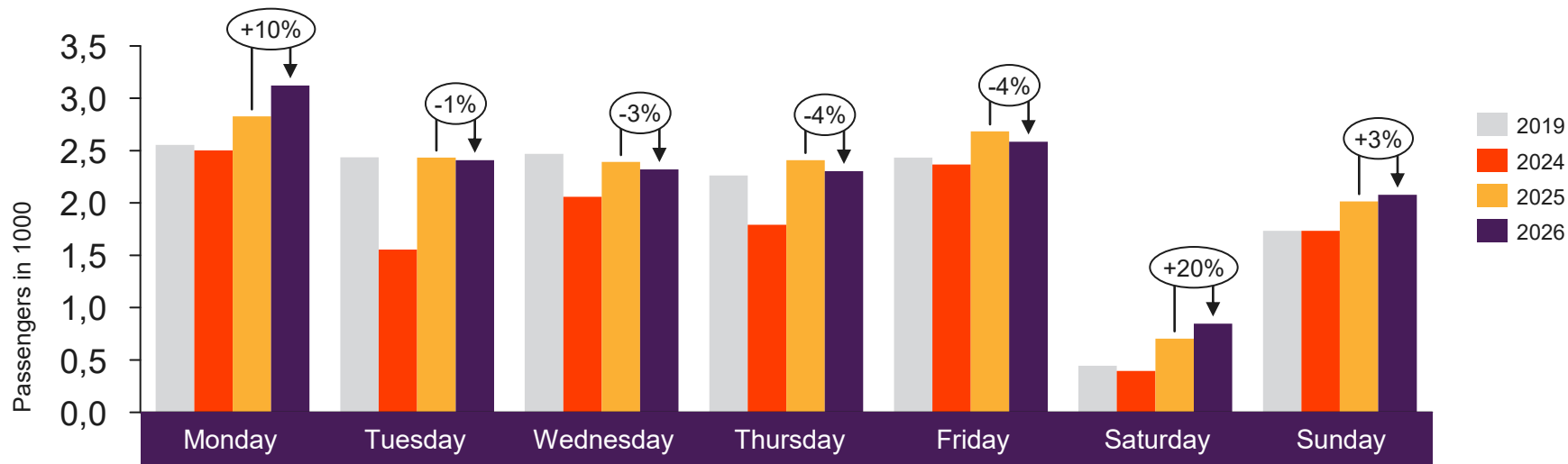


[Return to content
page](#)

Local airports on the West coast and in Troms and Finnmark

Total passenger numbers from Berlevåg, Båtsfjord, Florø, Førde, Hammerfest, Hasvik, Honningsvåg, Lakselv, Mehamn, Røros, Sandane, Sogndal, Sørkjosen, Vadsø, Vardø and Ørsta-Volda

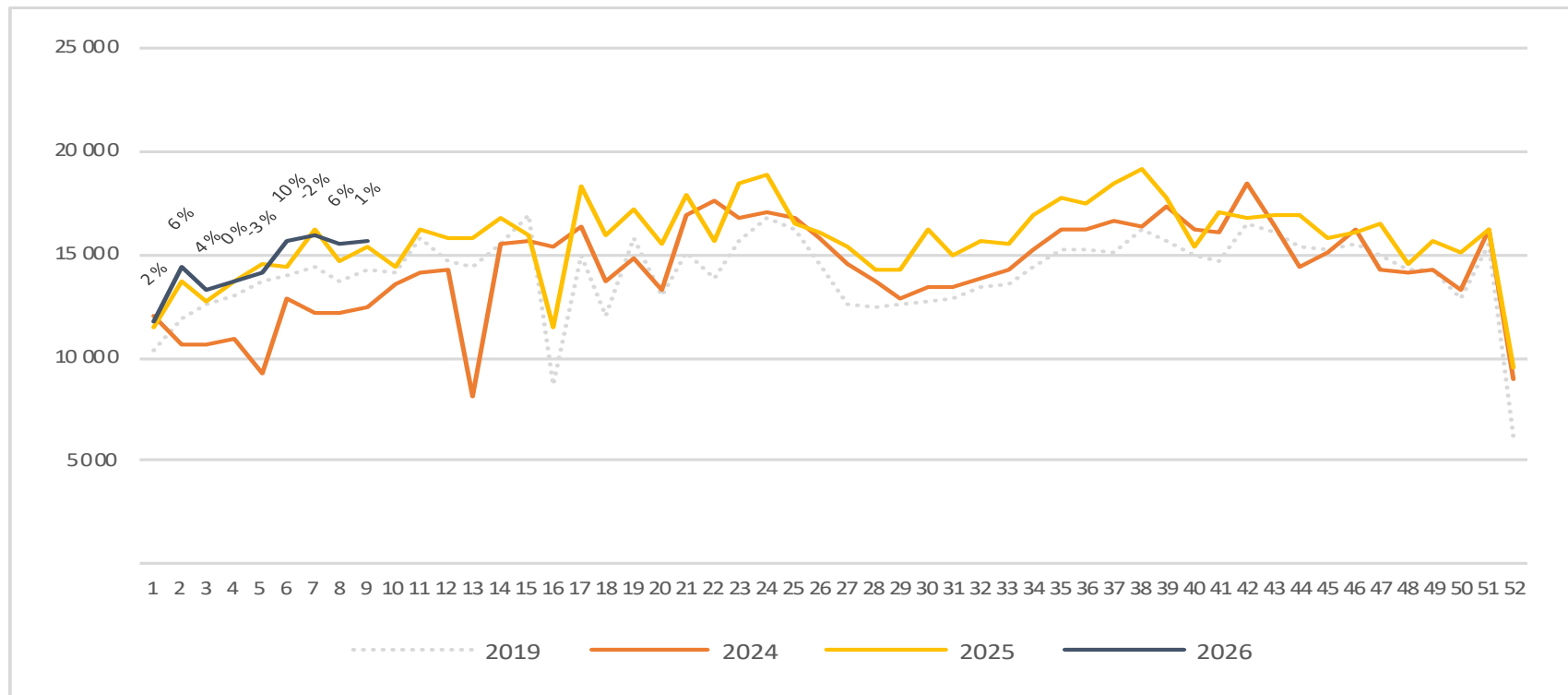
Passengers local airports on the West coast and in Troms and Finnmark total per day week 9



2019	2 555	2 437	2 469	2 262	2 434	444	1 735
2024	2 501	1 555	2 060	1 793	2 368	395	1 733
2025	2 827	2 434	2 391	2 409	2 683	705	2 016
2026	3 122	2 409	2 321	2 303	2 586	847	2 078

Passengers local airports on the West coast and in Troms and Finnmark total per week

The change is measured against the same week last year



Passengers local airports on the West coast and in Troms and Finnmark domestic per week

The change is measured against the same week last year

