



Passenger numbers per week

## Preliminary figures

- The figures for the previous week are preliminary. It takes some time for all passenger numbers to be reported, so the figures for the previous week may be lower than the final figures.
- The figures are from SIA, Avinor's traffic database.

# Content

- Top 10 airports
- Avinor total
- Selected airports
- The 4 biggest airports
- Regional and local airports
  - Regional airports
  - Local airports in Trøndelag and Nordland
  - Local airports on the west coast of Norway and in Troms and Finnmark

## Top 10 airports, total, week 8

Airport	2019	2024	2025	2026	2026 vs. 2025	
					Change	Change %
Oslo	506 981	437 898	465 380	484 301	18 921	4 %
Bergen	106 738	101 175	103 927	110 485	6 558	6 %
Tromsø	49 553	59 308	69 550	81 228	11 678	17 %
Trondheim	77 712	66 825	70 346	73 268	2 922	4 %
Stavanger	72 639	62 388	64 891	65 653	762	1 %
Bodø	29 052	31 930	33 180	38 070	4 890	15 %
Harstad/Narvik	12 677	14 990	13 615	18 838	5 223	38 %
Ålesund	19 886	18 183	17 589	16 081	-1 508	-9 %
Kristiansand	17 691	13 402	12 504	13 598	1 094	9 %
Alta	7 134	6 041	6 949	7 386	437	6 %

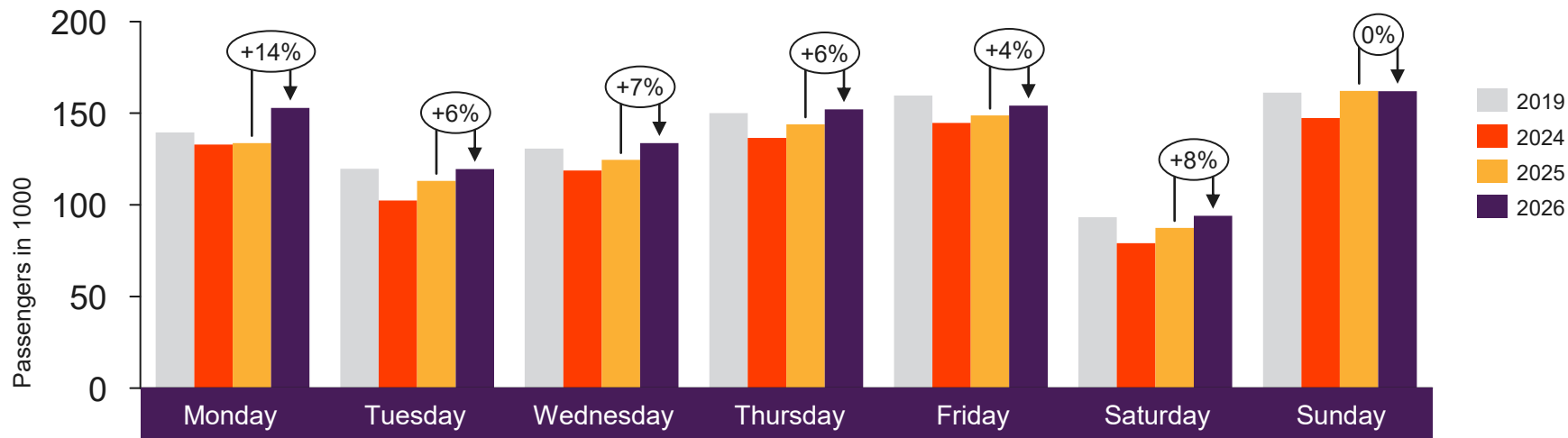


[Return to content  
page](#)

# Avinor total

Passenger numbers for all Avinor airports

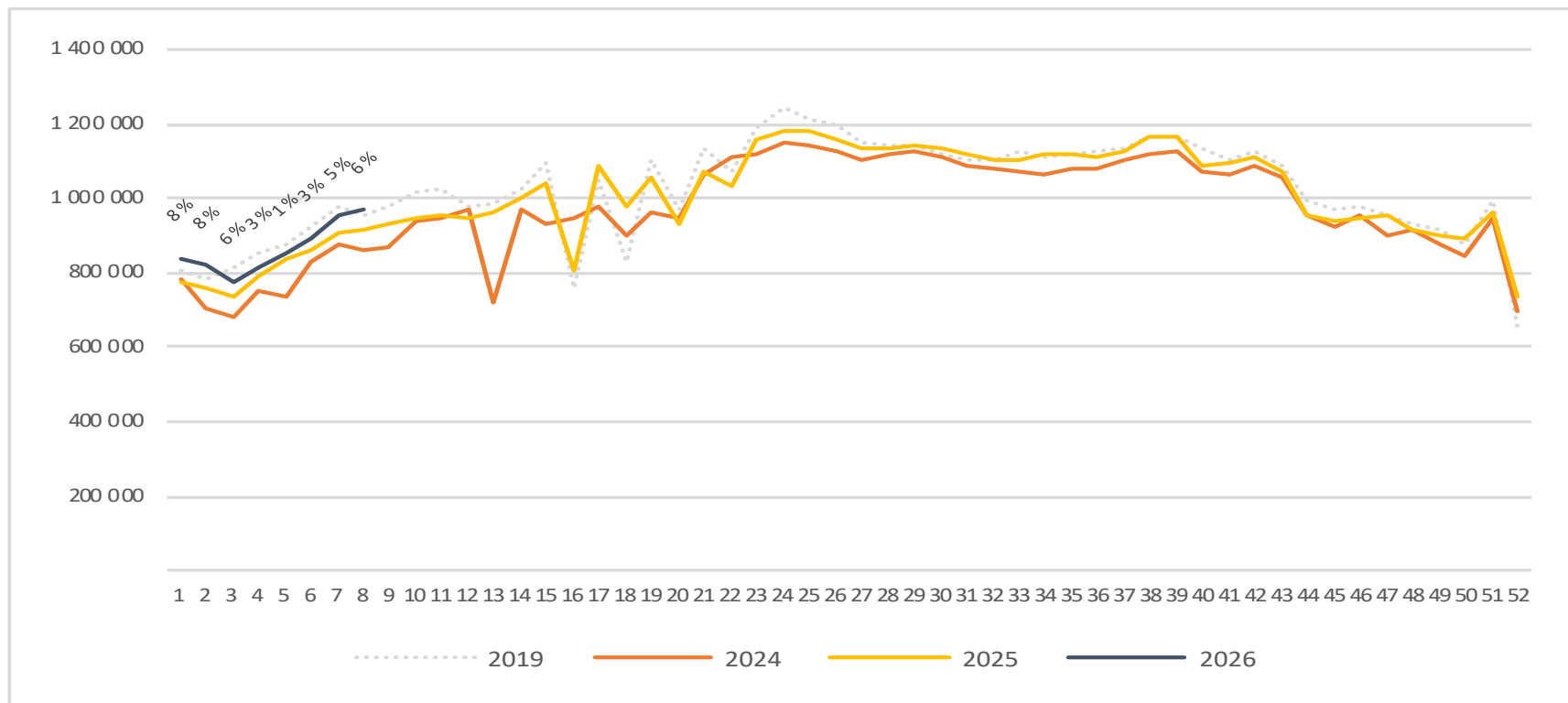
# Passengers Avinor total per day week 8



2019	139 467	119 759	130 793	150 087	159 726	93 294	161 168
2024	132 860	102 395	118 744	136 559	144 773	79 020	147 411
2025	133 772	113 124	124 499	143 921	148 760	87 438	162 253
2026	152 941	119 534	133 660	152 062	154 104	94 003	162 050

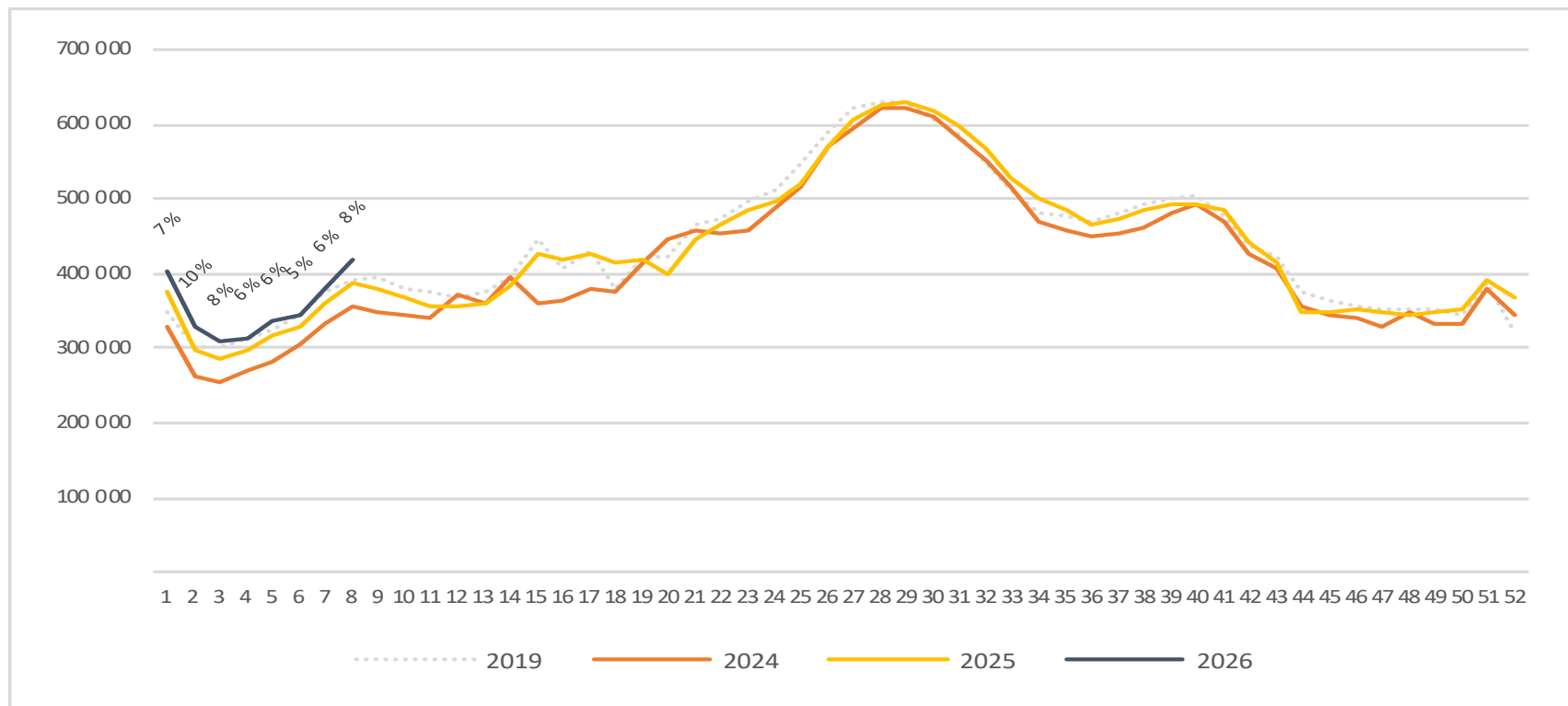
# Passengers Avinor total per week

The change is measured against the same week last year



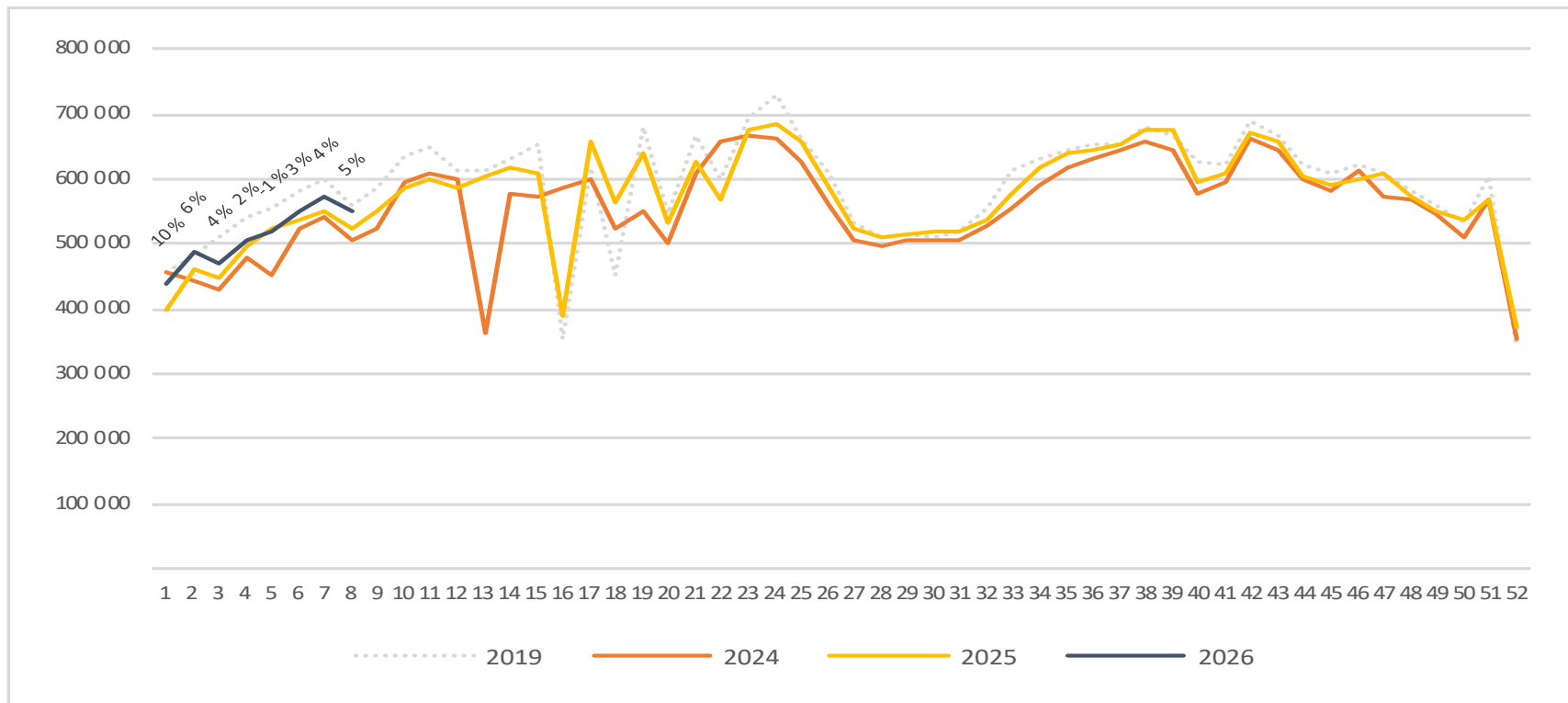
# Passengers Avinor international per week

The change is measured against the same week last year



# Passengers Avinor domestic per week

The change is measured against the same week last year

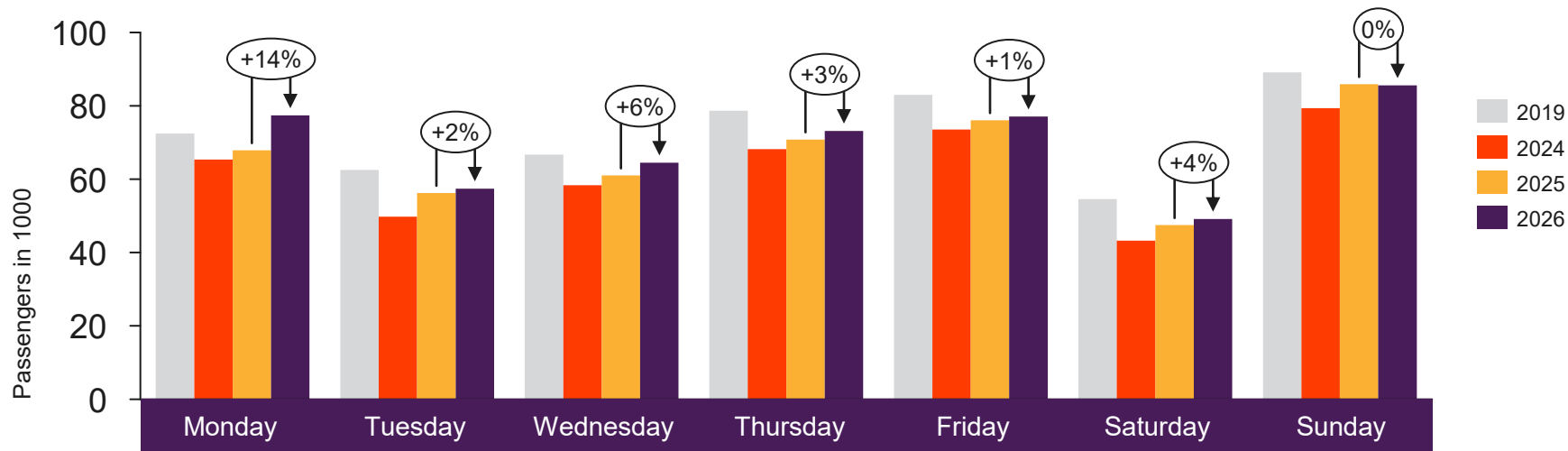




[Return to content page](#)

# Selected airports

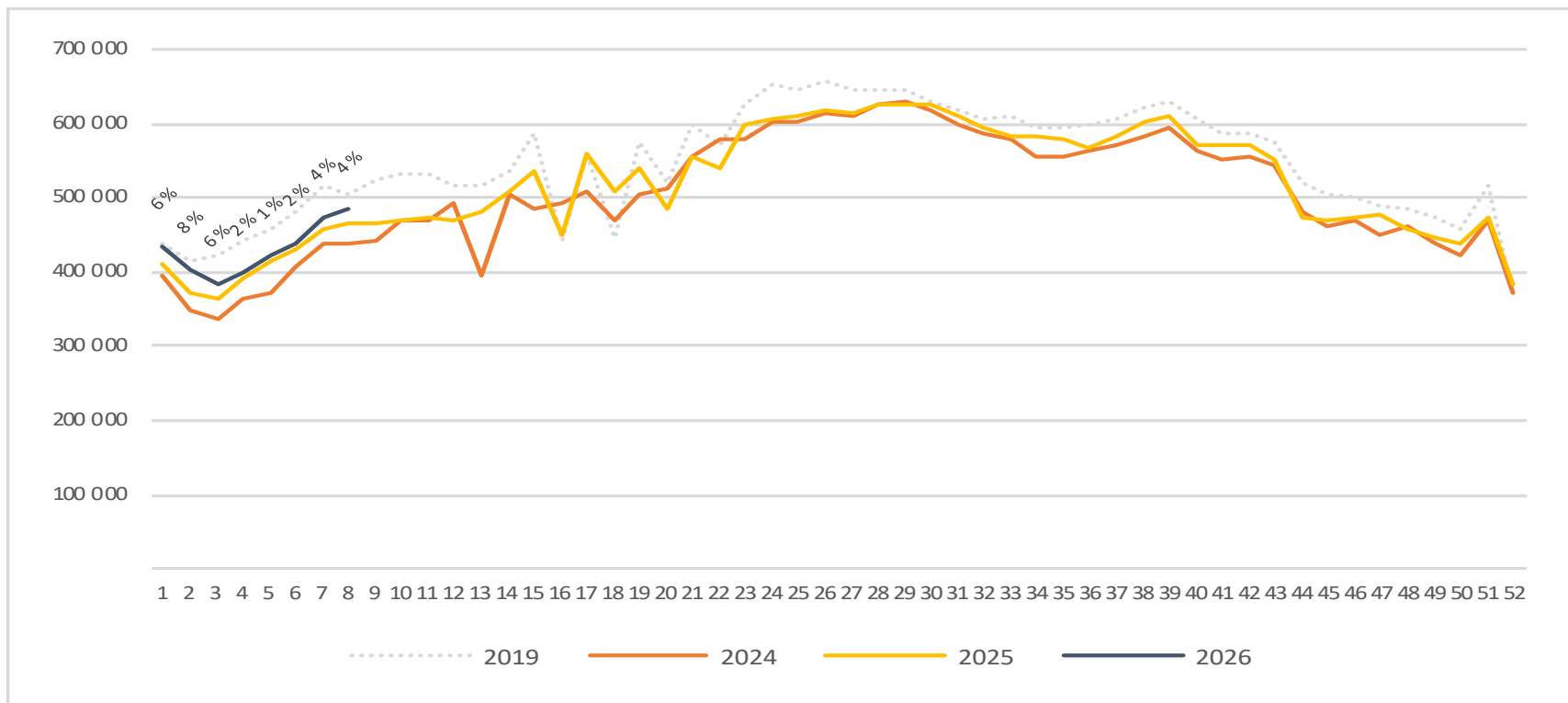
# Passengers OSL total per day week 8



2019	72 433	62 552	66 692	78 648	82 958	54 587	89 111
2024	65 387	49 798	58 344	68 173	73 558	43 280	79 358
2025	67 882	56 239	61 021	70 821	76 030	47 480	85 907
2026	77 391	57 438	64 505	73 178	77 068	49 145	85 576

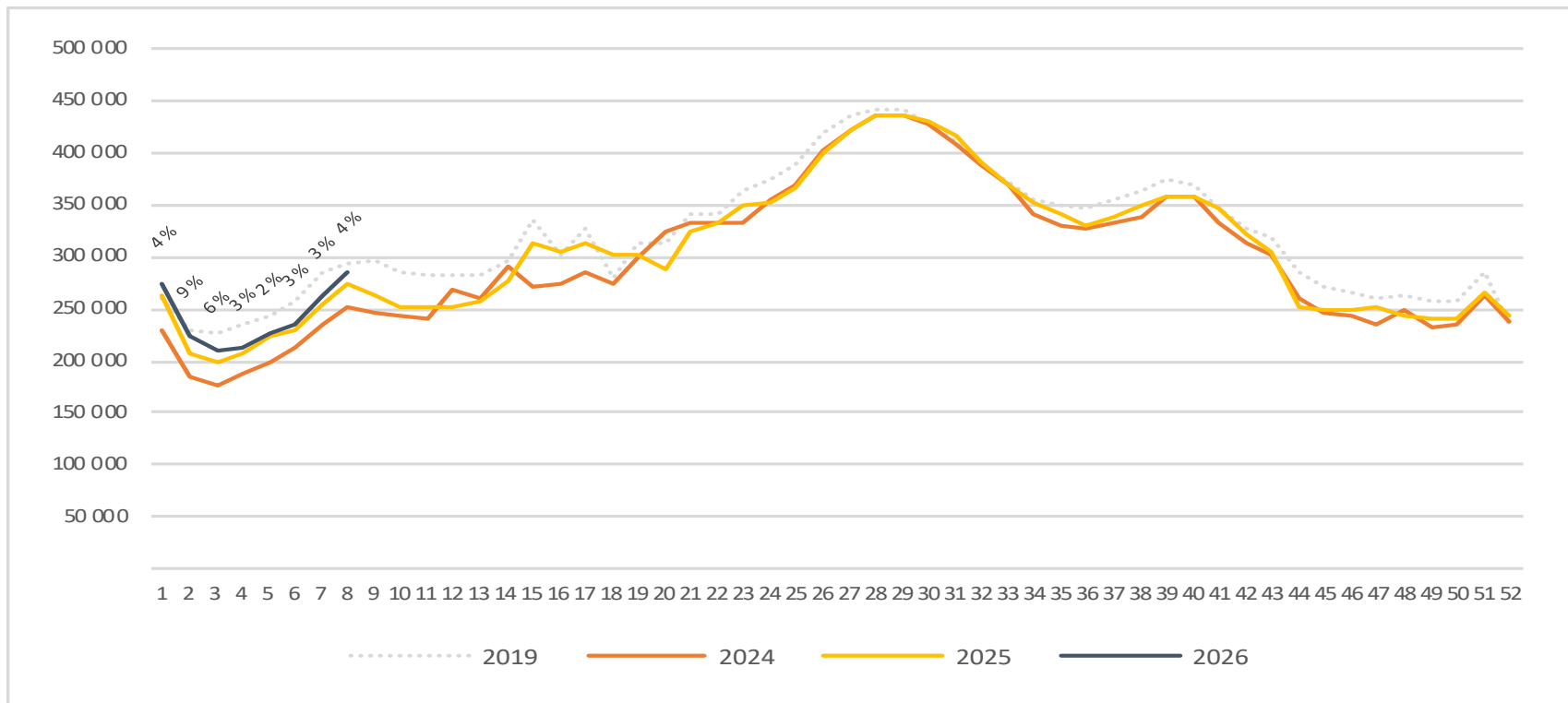
# Passengers OSL total per week

The change is measured against the same week last year



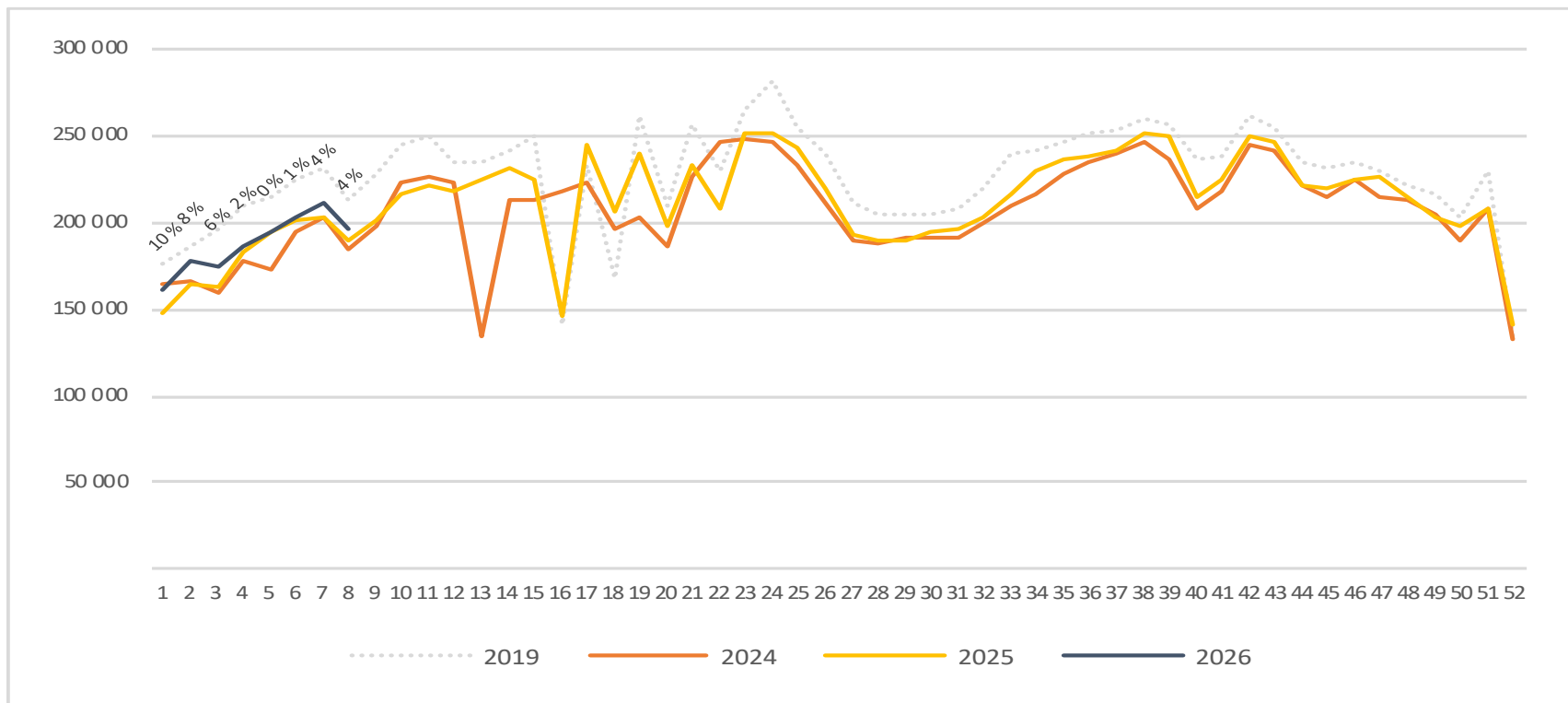
# Passengers OSL international per week

The change is measured against the same week last year

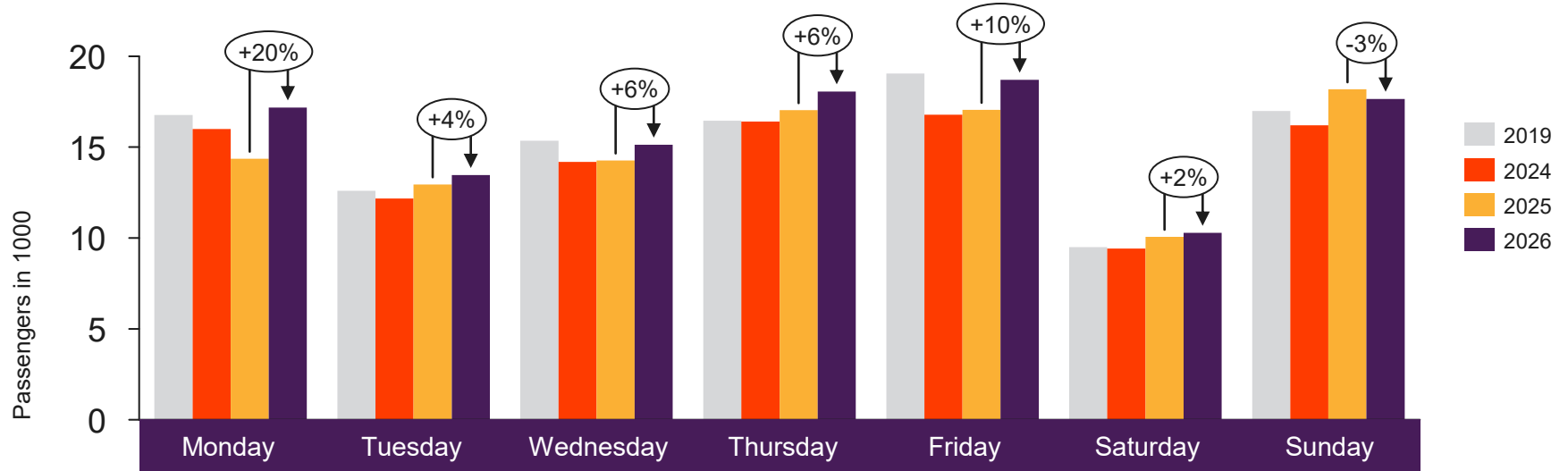


# Passengers OSL domestic per week

The change is measured against the same week last year



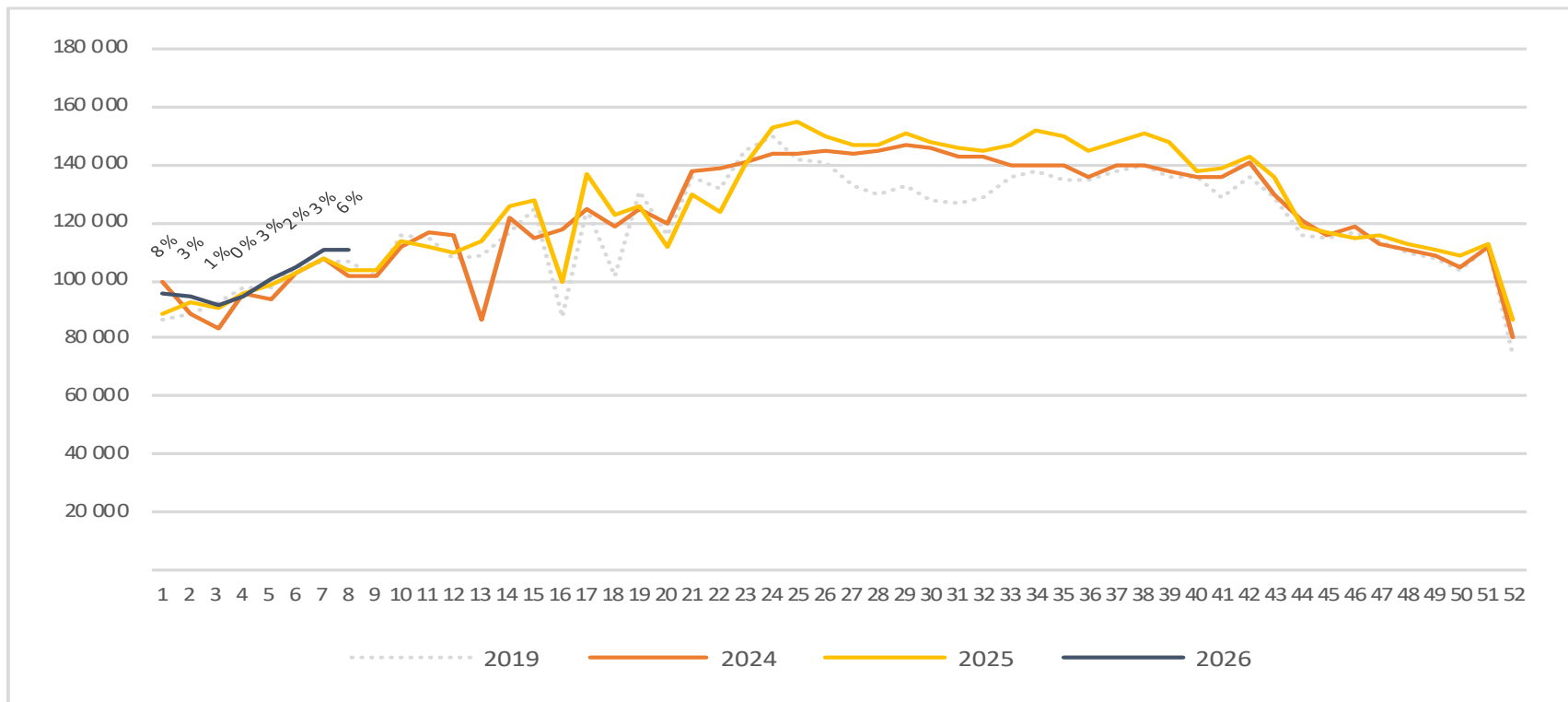
# Passengers BGO total per day week 8



2019	16 769	12 598	15 361	16 461	19 046	9 505	16 998
2024	15 993	12 168	14 186	16 408	16 789	9 425	16 206
2025	14 366	12 950	14 269	17 039	17 053	10 069	18 181
2026	17 181	13 465	15 129	18 068	18 712	10 282	17 648

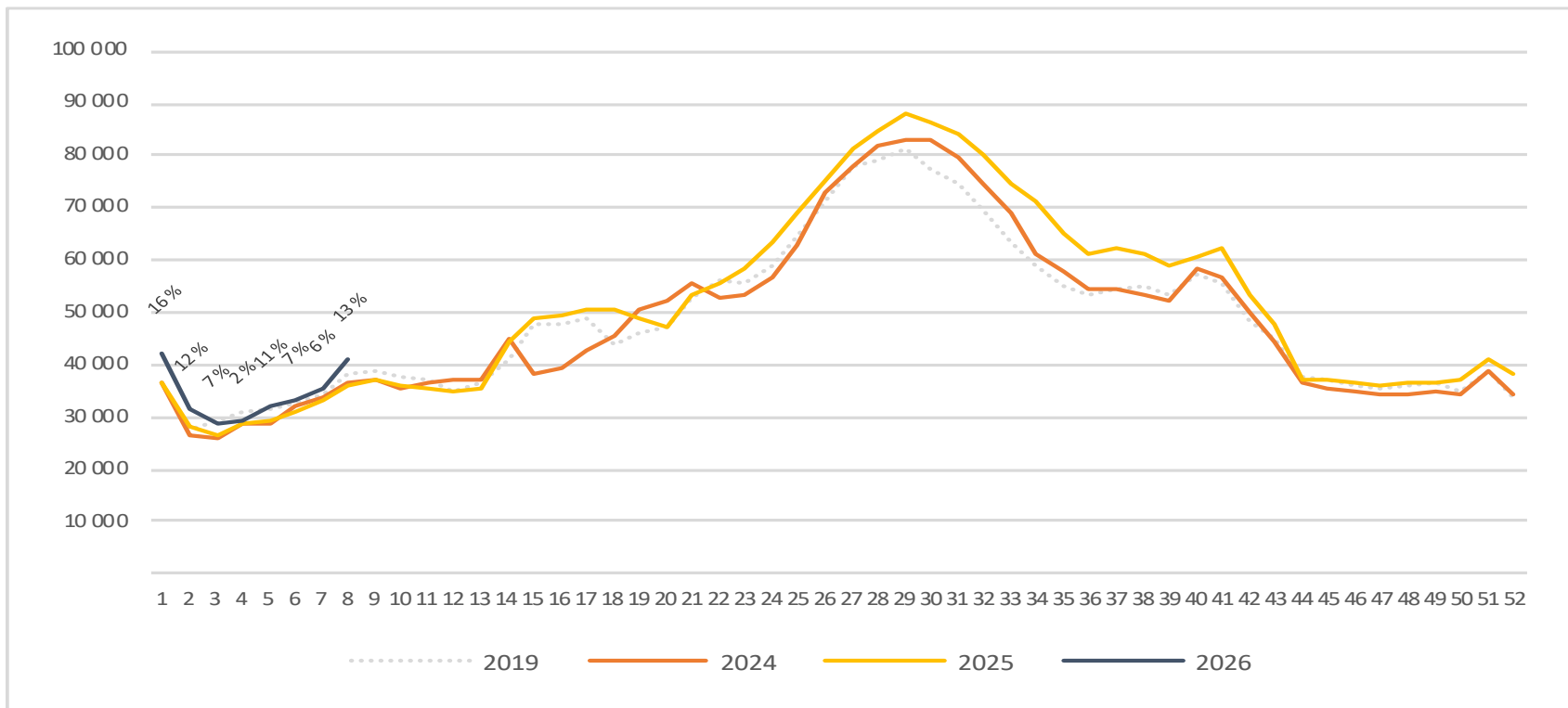
# Passengers BGO total per week

The change is measured against the same week last year



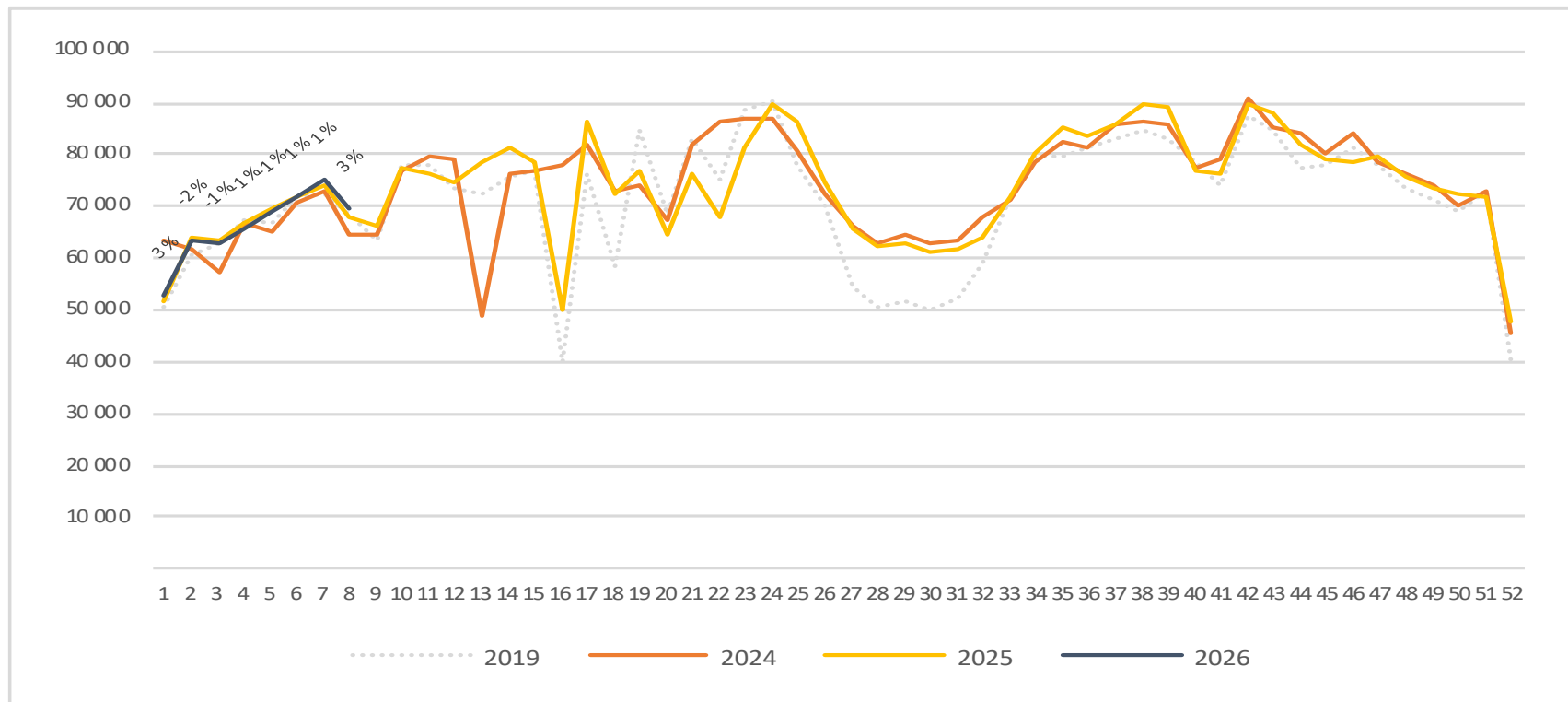
# Passengers BGO international per week

The change is measured against the same week last year

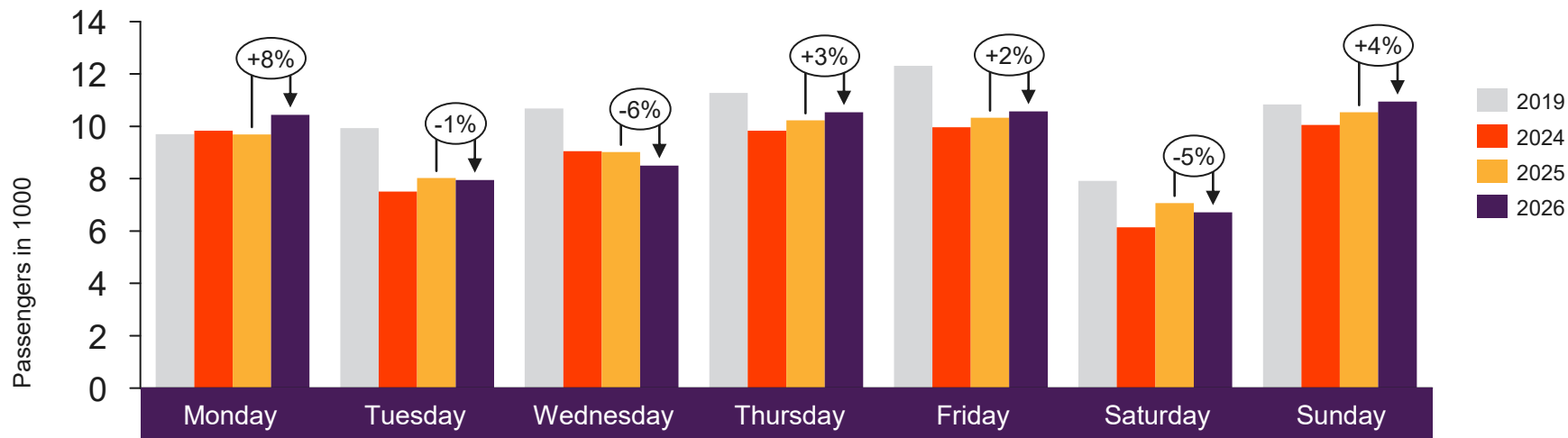


# Passengers BGO domestic per week

The change is measured against the same week last year



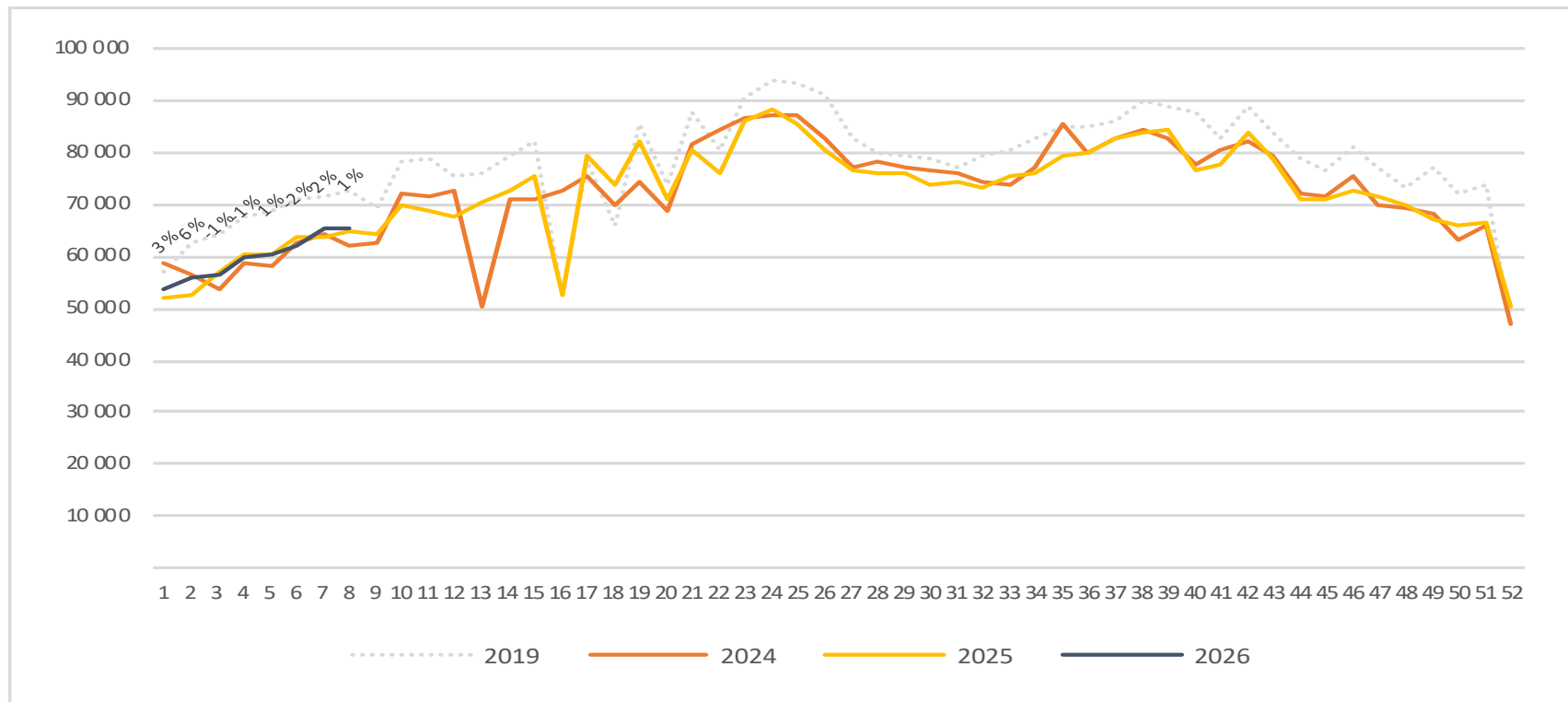
# Passengers SVG total per day week 8



	Monday	Tuesday	Wednesday	Thursday	Friday	Saturday	Sunday
2019	9 698	9 929	10 682	11 274	12 313	7 912	10 831
2024	9 830	7 513	9 046	9 835	9 963	6 148	10 053
2025	9 694	8 022	9 015	10 225	10 331	7 068	10 536
2026	10 443	7 949	8 498	10 535	10 573	6 714	10 941

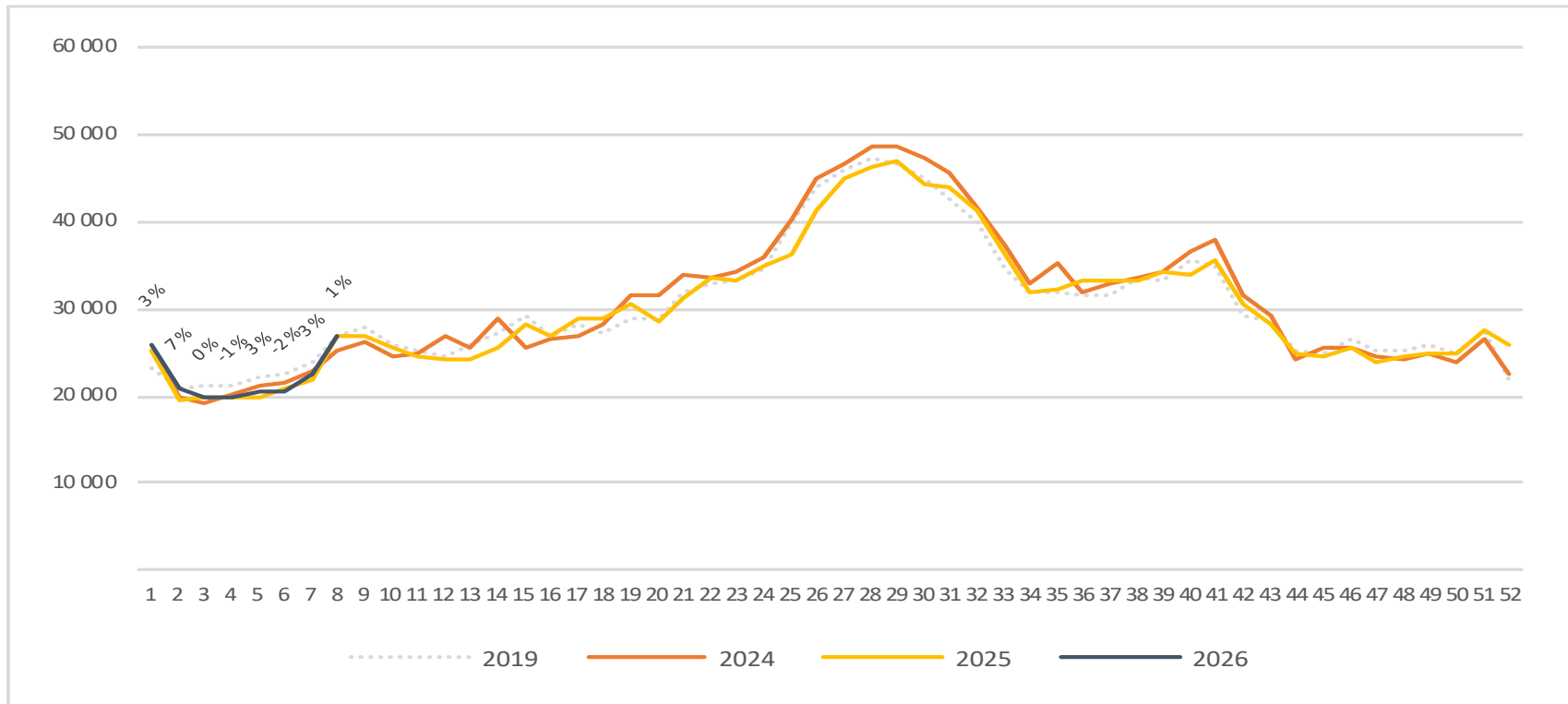
# Passengers SVG total per week

The change is measured against the same week last year



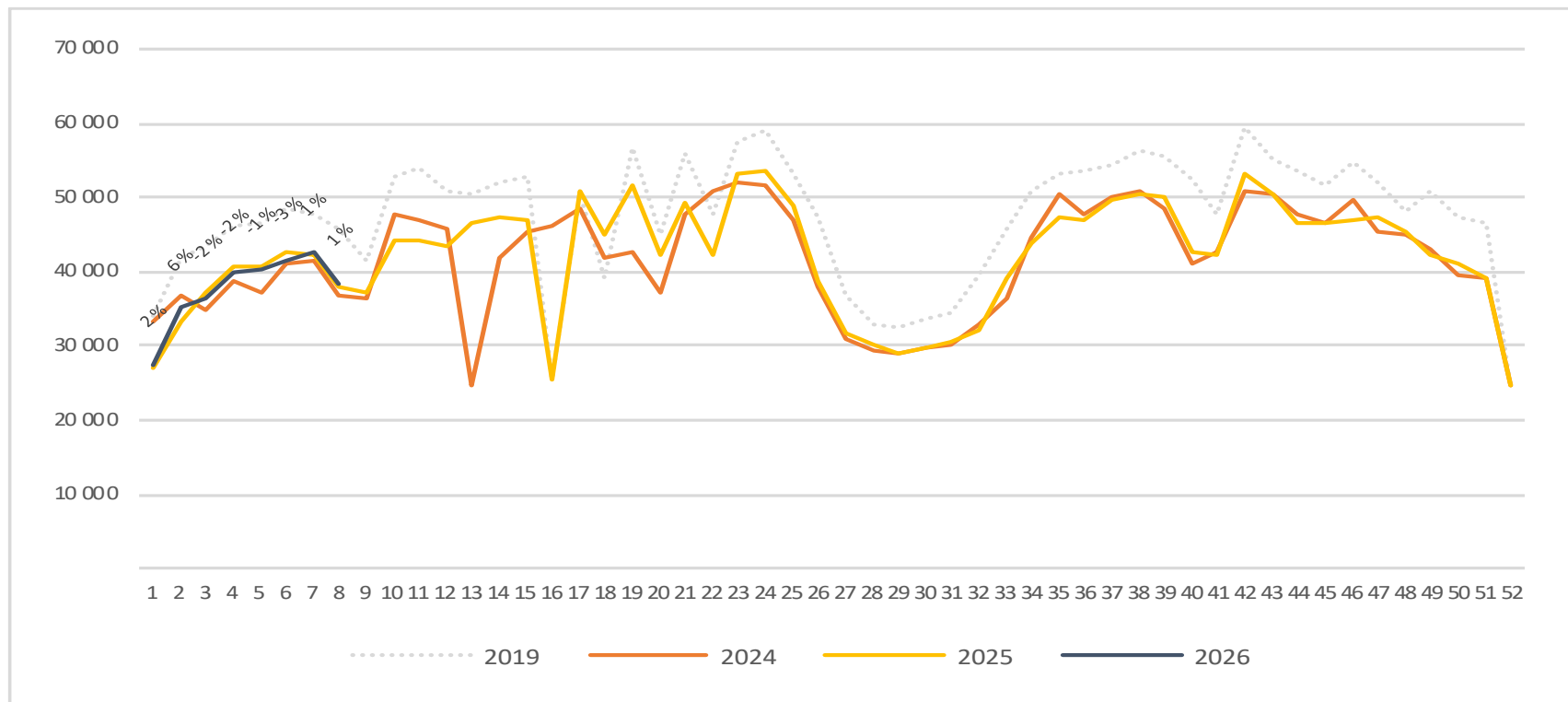
# Passengers SVG international per week

The change is measured against the same week last year

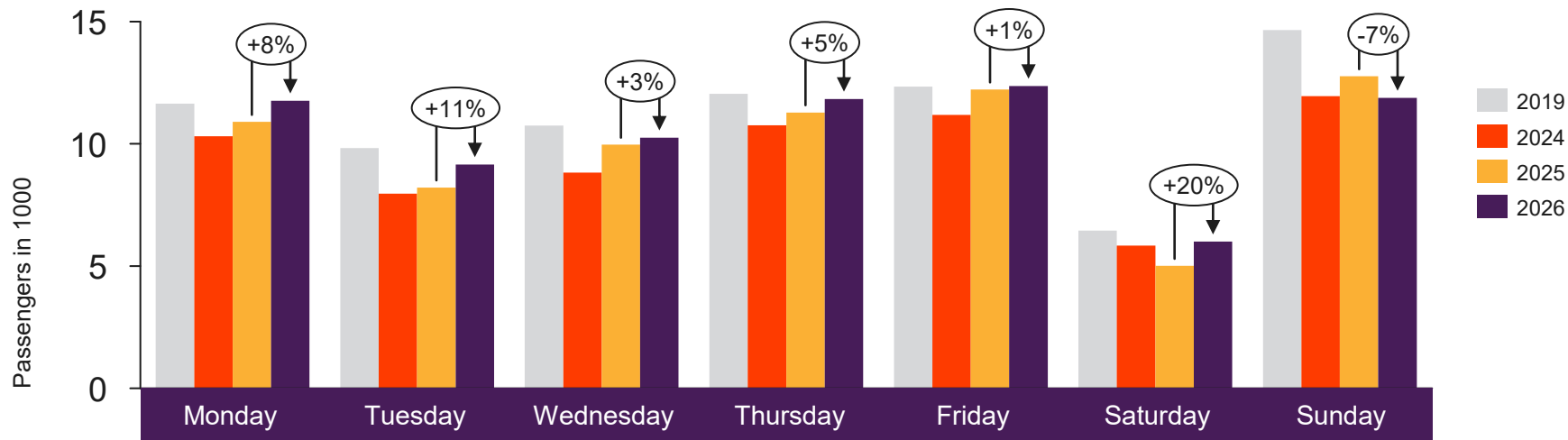


# Passengers SVG domestic per week

The change is measured against the same week last year



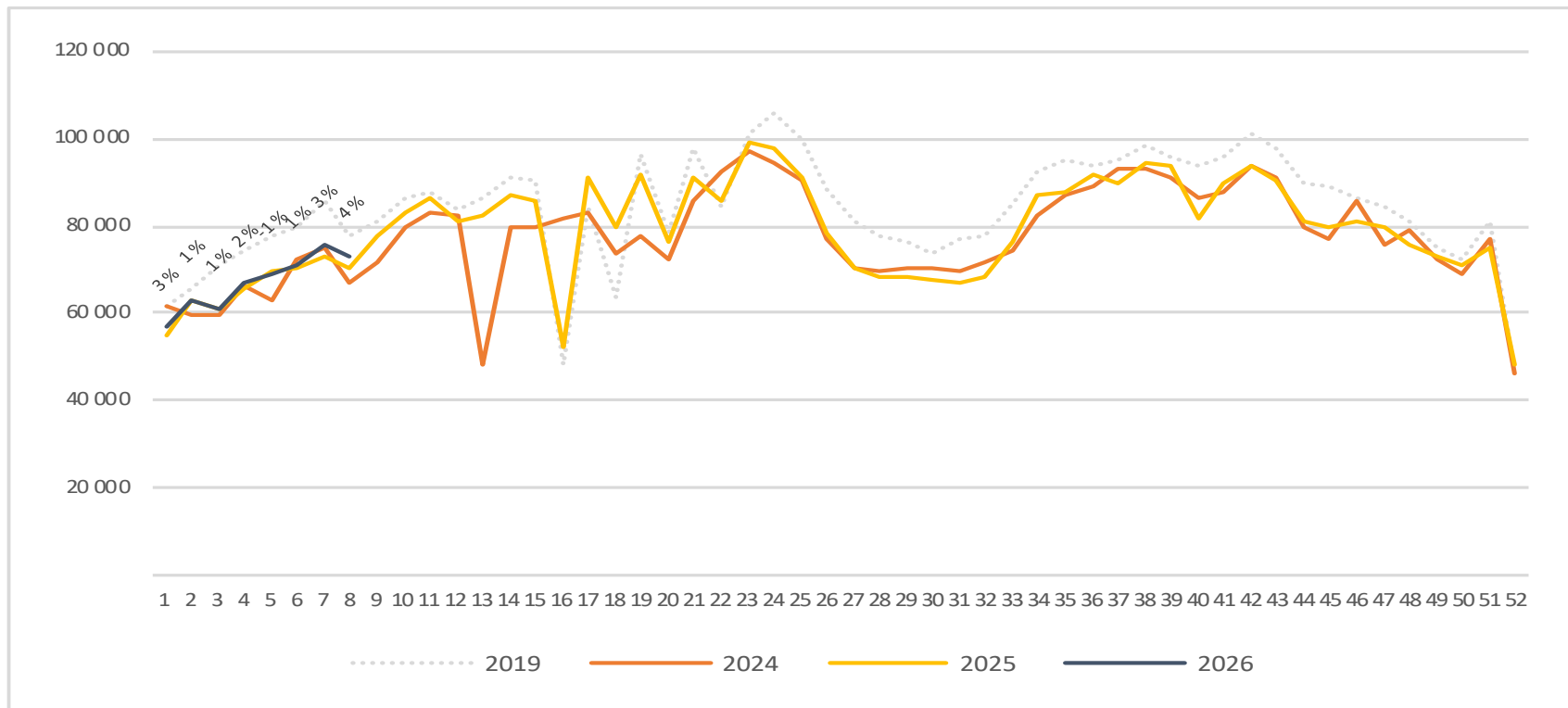
# Passengers TRD total per day week 8



	Monday	Tuesday	Wednesday	Thursday	Friday	Saturday	Sunday
2019	11 649	9 831	10 744	12 043	12 342	6 454	14 649
2024	10 311	7 961	8 825	10 761	11 180	5 835	11 952
2025	10 896	8 214	9 963	11 284	12 221	5 007	12 761
2026	11 763	9 156	10 258	11 839	12 365	6 004	11 883

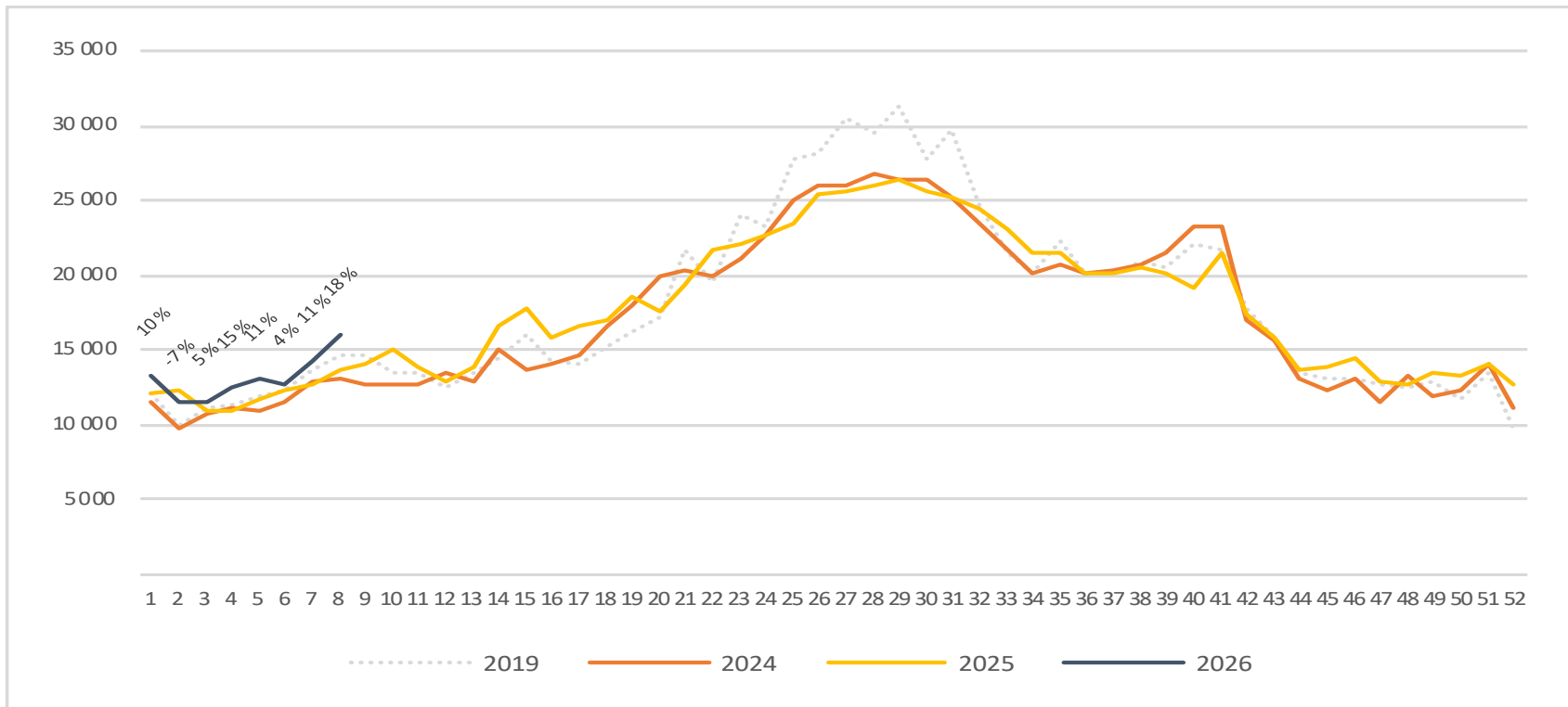
# Passengers TRD total per week

The change is measured against the same week last year



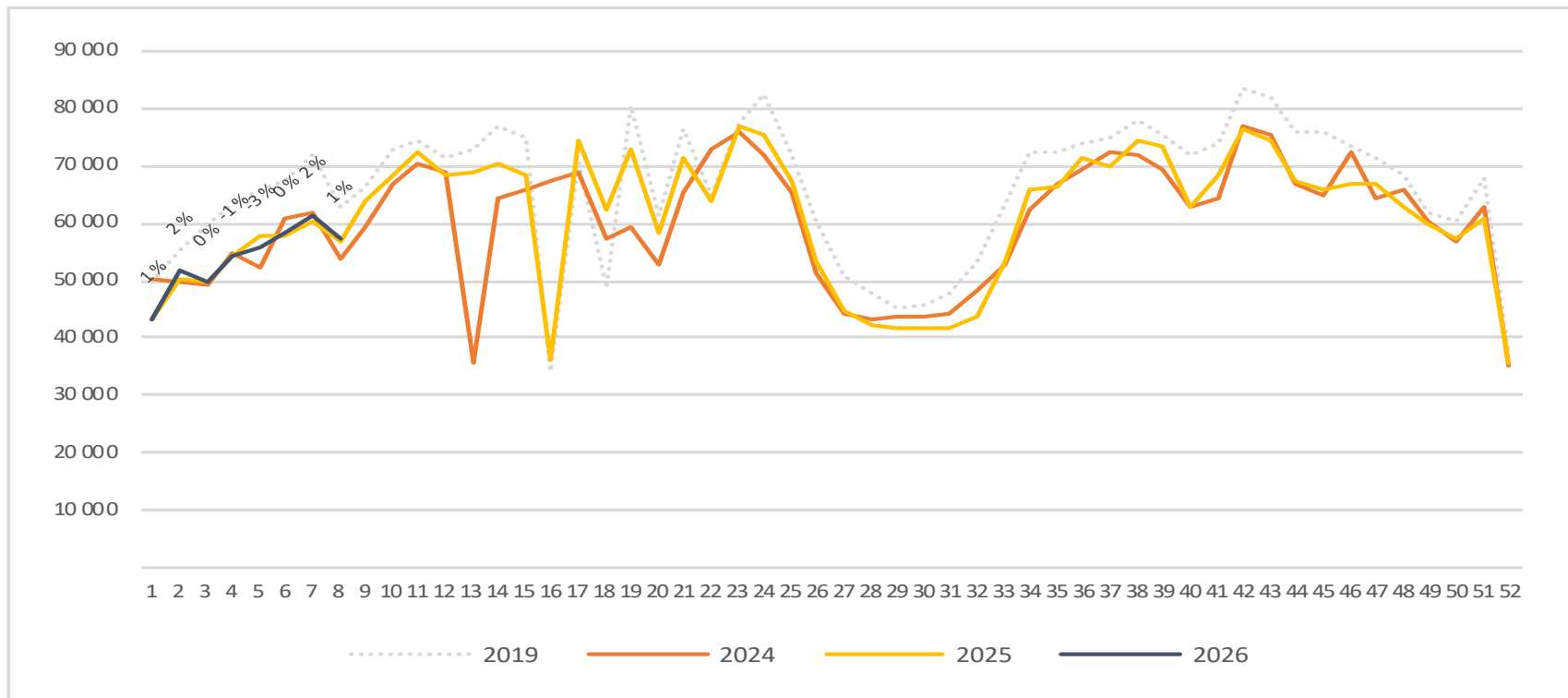
# Passengers TRD international per week

The change is measured against the same week last year

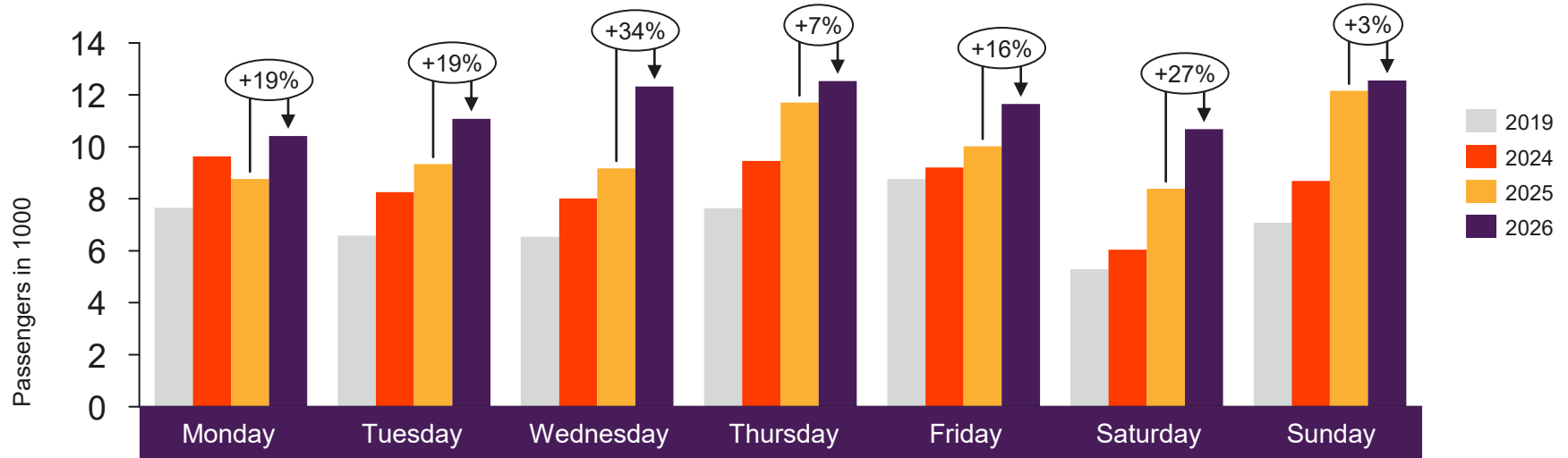


# Passengers TRD domestic per week

The change is measured against the same week last year



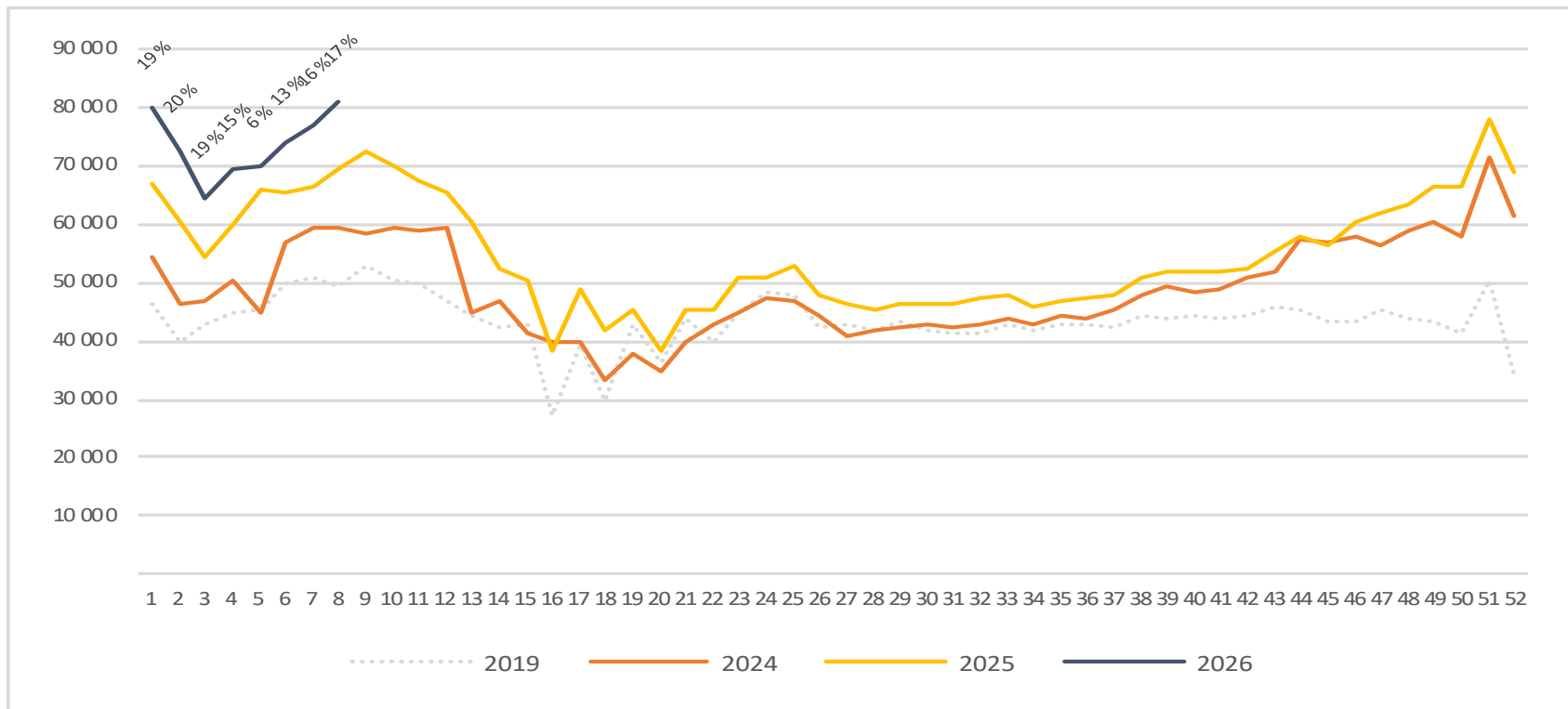
# Passengers TOS total per day week 8



	Monday	Tuesday	Wednesday	Thursday	Friday	Saturday	Sunday
2019	7 650	6 585	6 540	7 640	8 767	5 296	7 075
2024	9 633	8 254	8 015	9 462	9 207	6 046	8 691
2025	8 768	9 334	9 175	11 703	10 024	8 393	12 153
2026	10 417	11 080	12 327	12 527	11 647	10 677	12 553

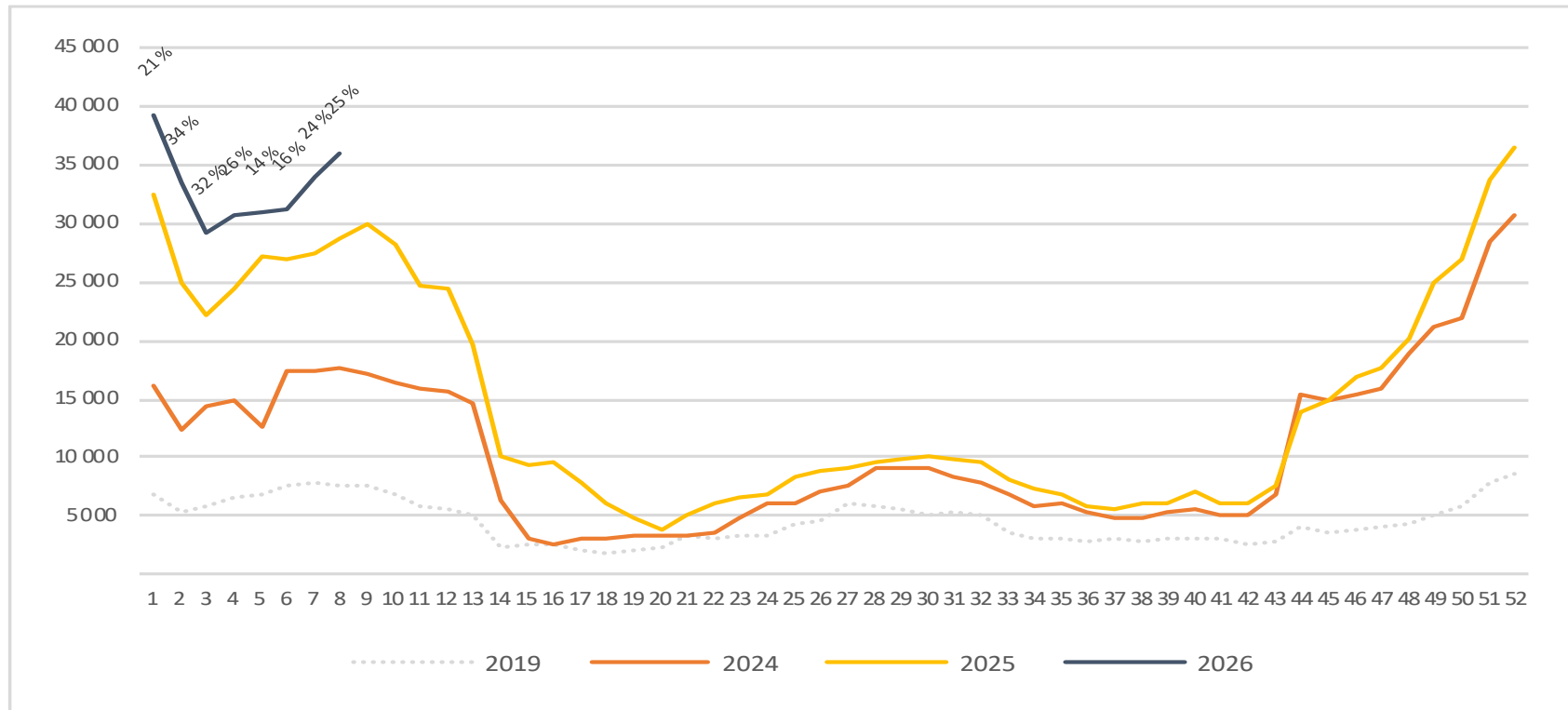
# Passengers TOS total per week

The change is measured against the same week last year



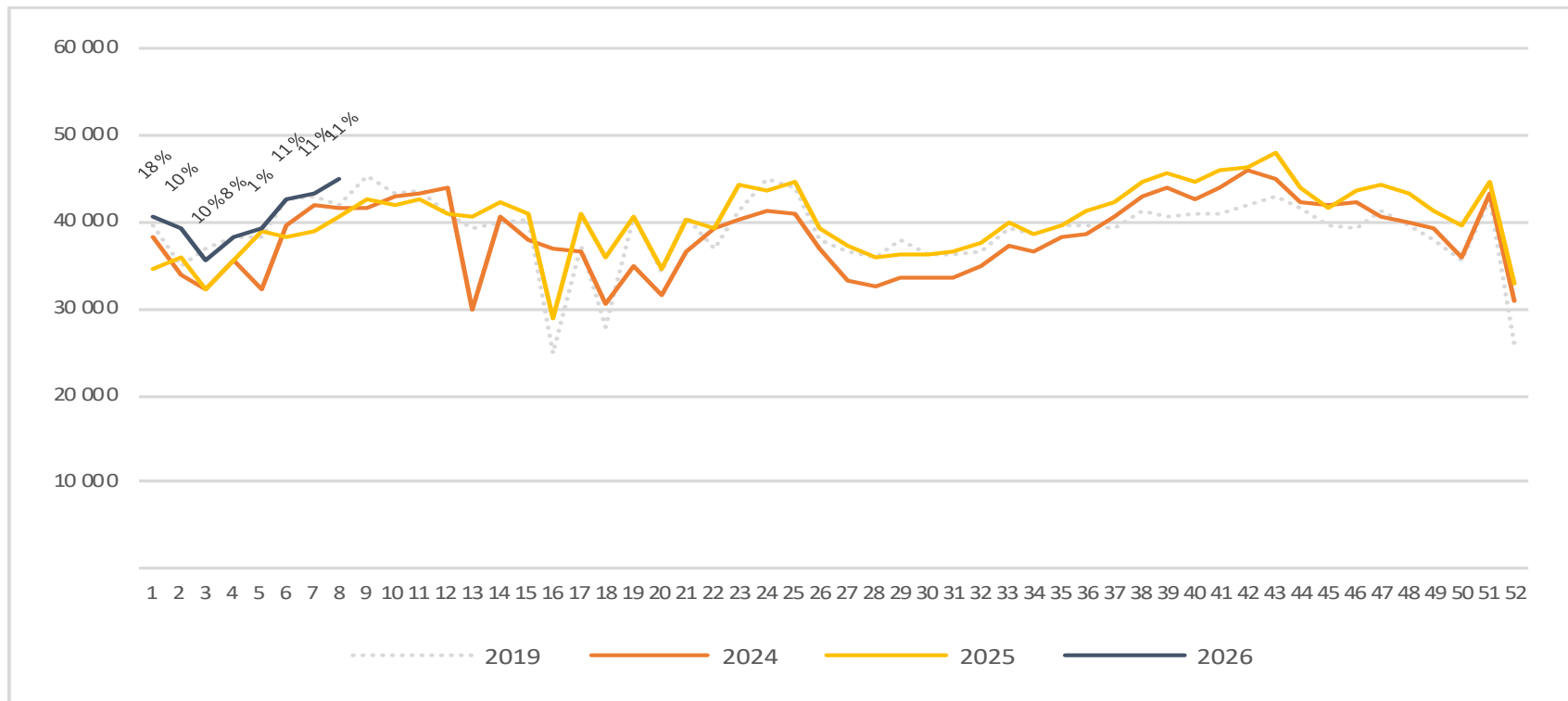
# Passengers TOS international per week

The change is measured against the same week last year



# Passengers TOS domestic per week

The change is measured against the same week last year



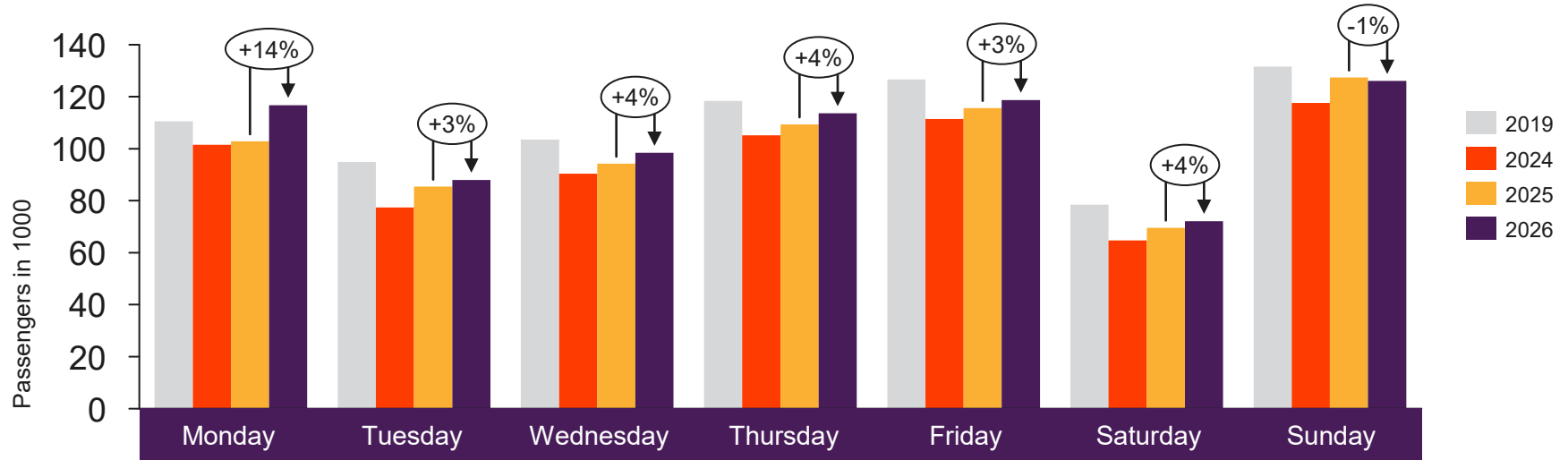


[Return to content  
page](#)

# Top 4 airports

Total passenger numbers from Oslo, Bergen, Stavanger and Trondheim

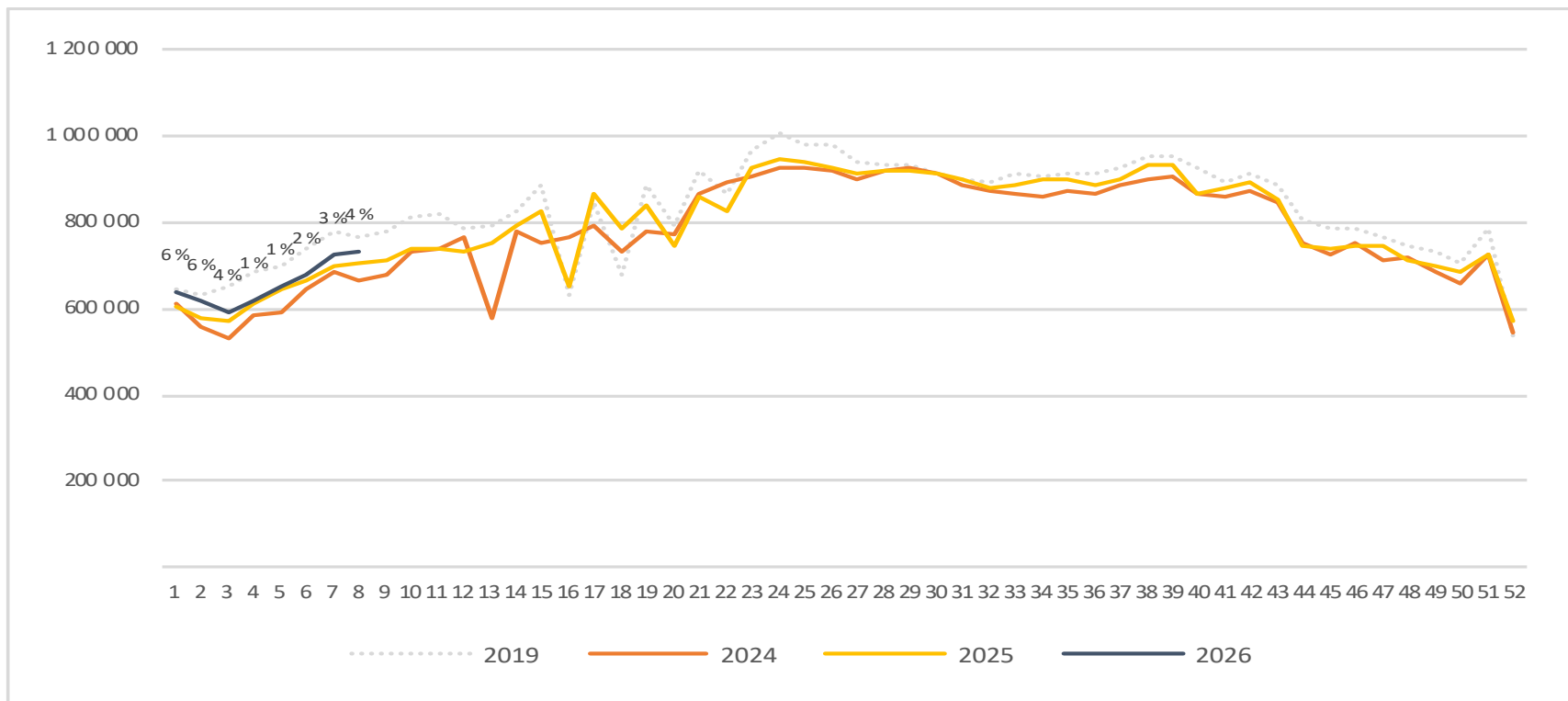
# Passengers top 4 airports total per day week 8



	Monday	Tuesday	Wednesday	Thursday	Friday	Saturday	Sunday
2019	110 549	94 910	103 479	118 426	126 659	78 458	131 589
2024	101 521	77 440	90 401	105 177	111 490	64 688	117 569
2025	102 838	85 425	94 268	109 369	115 635	69 624	127 385
2026	116 778	88 008	98 390	113 620	118 718	72 145	126 048

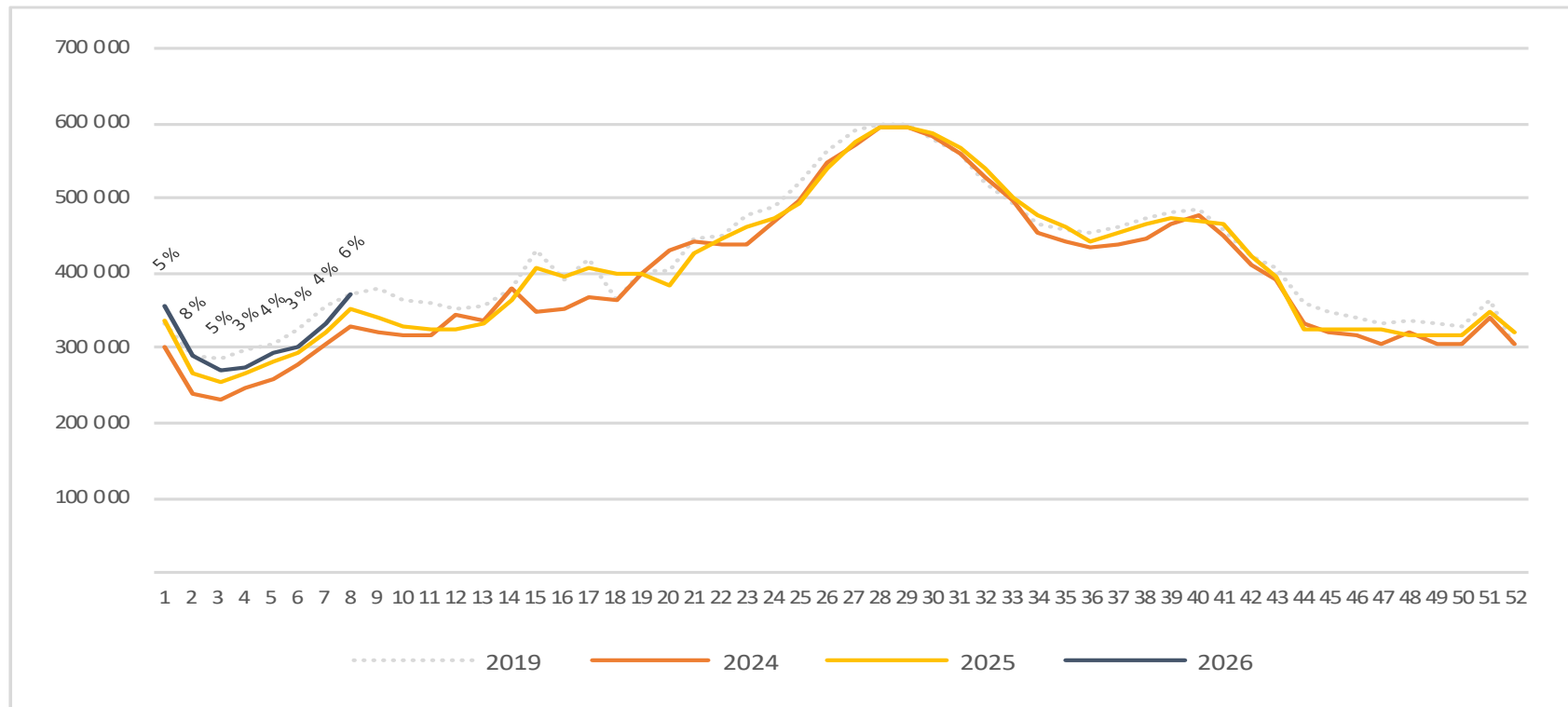
# Passengers top 4 airports total per week

The change is measured against the same week last year



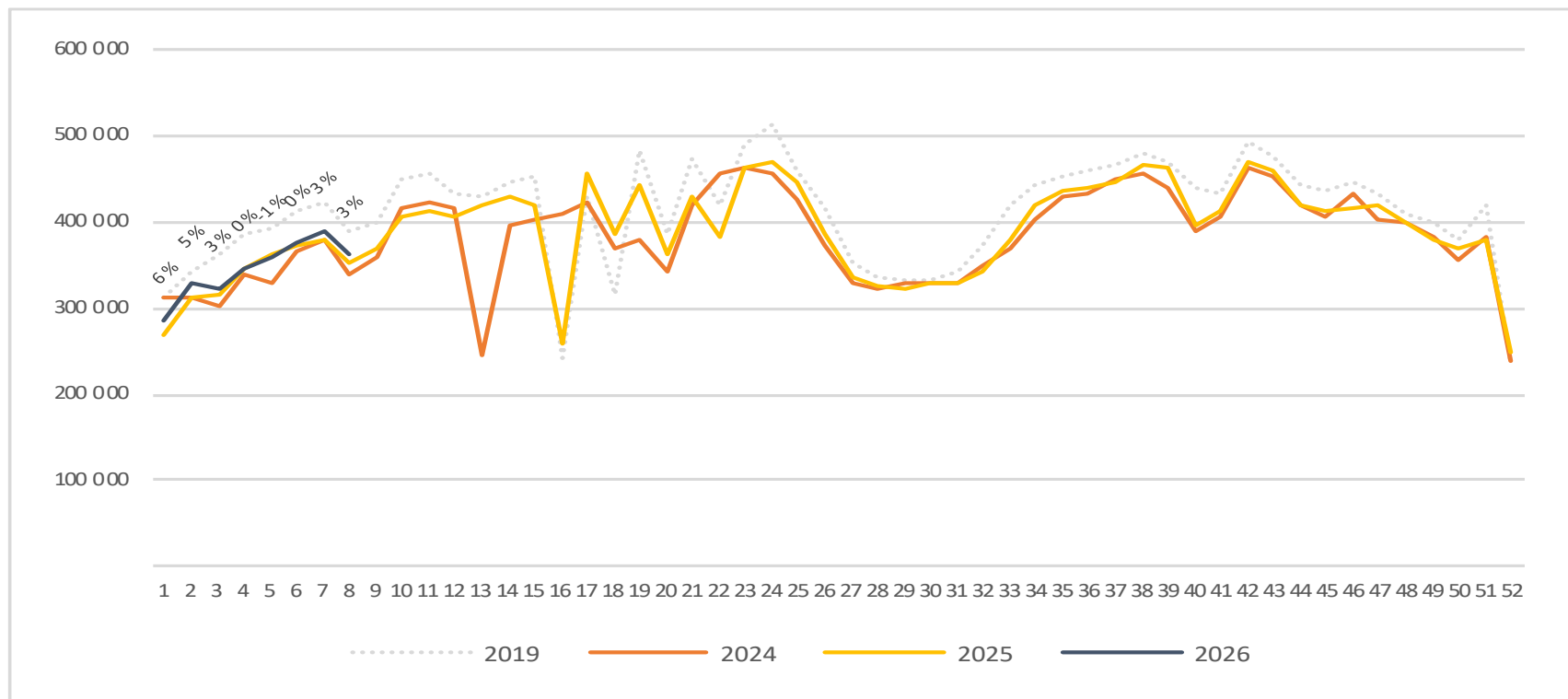
# Passengers top 4 airports international per week

The change is measured against the same week last year



# Passengers top 4 airports domestic per week

The change is measured against the same week last year



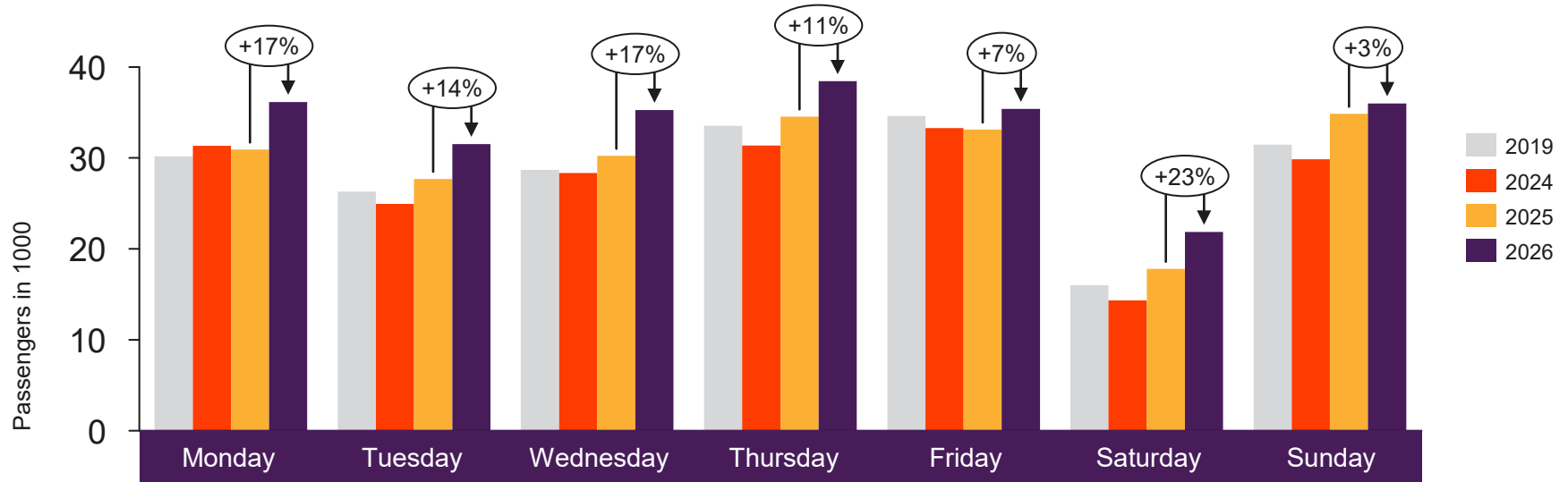


[Return to content page](#)

# Regional and local airports

Total passenger numbers from Alta, Andenes, Bardufoss, Berlevåg, Bodø, Brønnøysund, Båtsfjord, Florø, Førde, Hammerfest, Harstad/Narvik, Hasvik, Honningsvåg, Kirkenes, Kristiansand, Kristiansund, Lakselv, Leknes, Mehamn, Mo i Rana, Molde, Mosjøen, Namsos, Røros, Rørvik, Røst, Sandane, Sandnessjøen, Sogndal, Stokmarknes, Svalbard, Svolvær, Sørkjosen, Tromsø, Vadsø, Vardø, Værøy, Ørsta-Volda and Ålesund

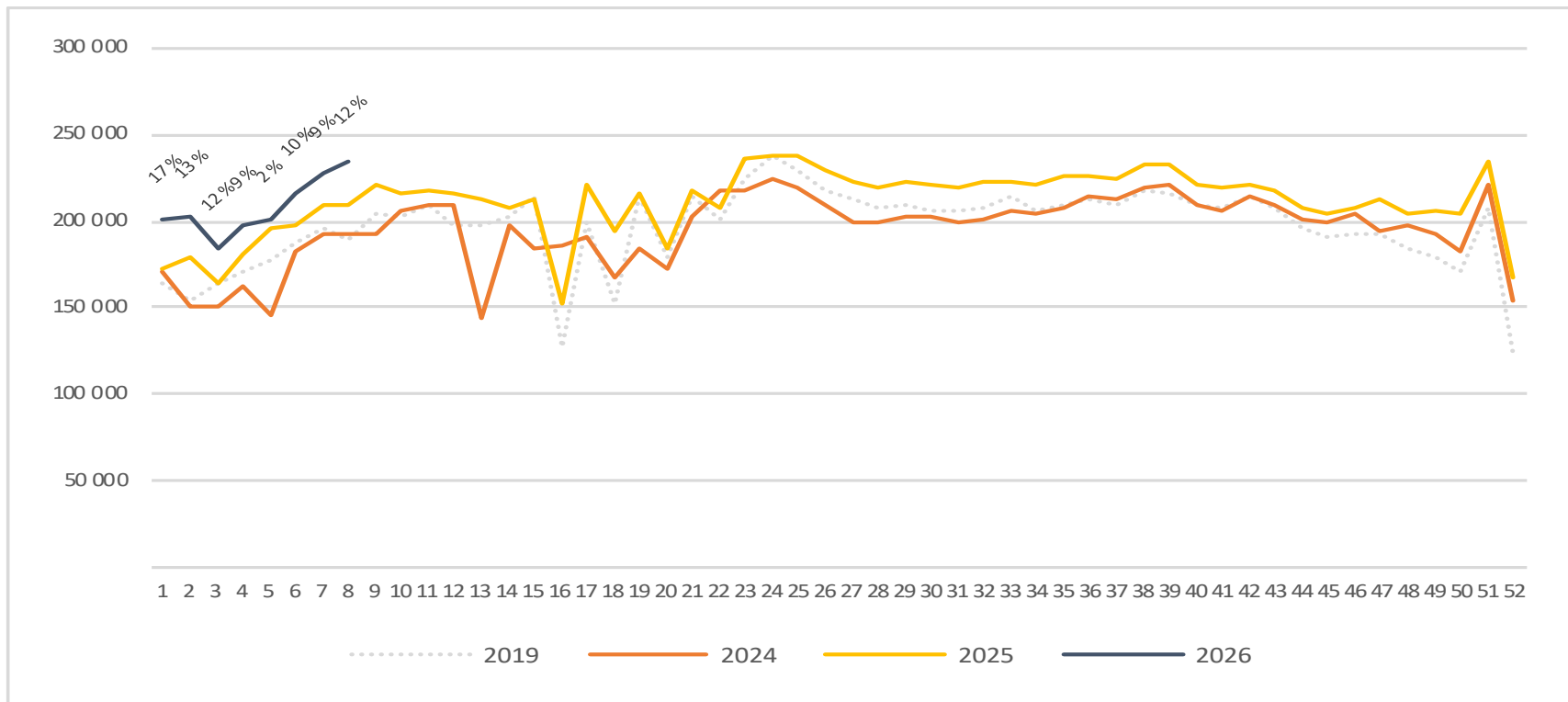
# Passengers Regional and local airports total per day week 8



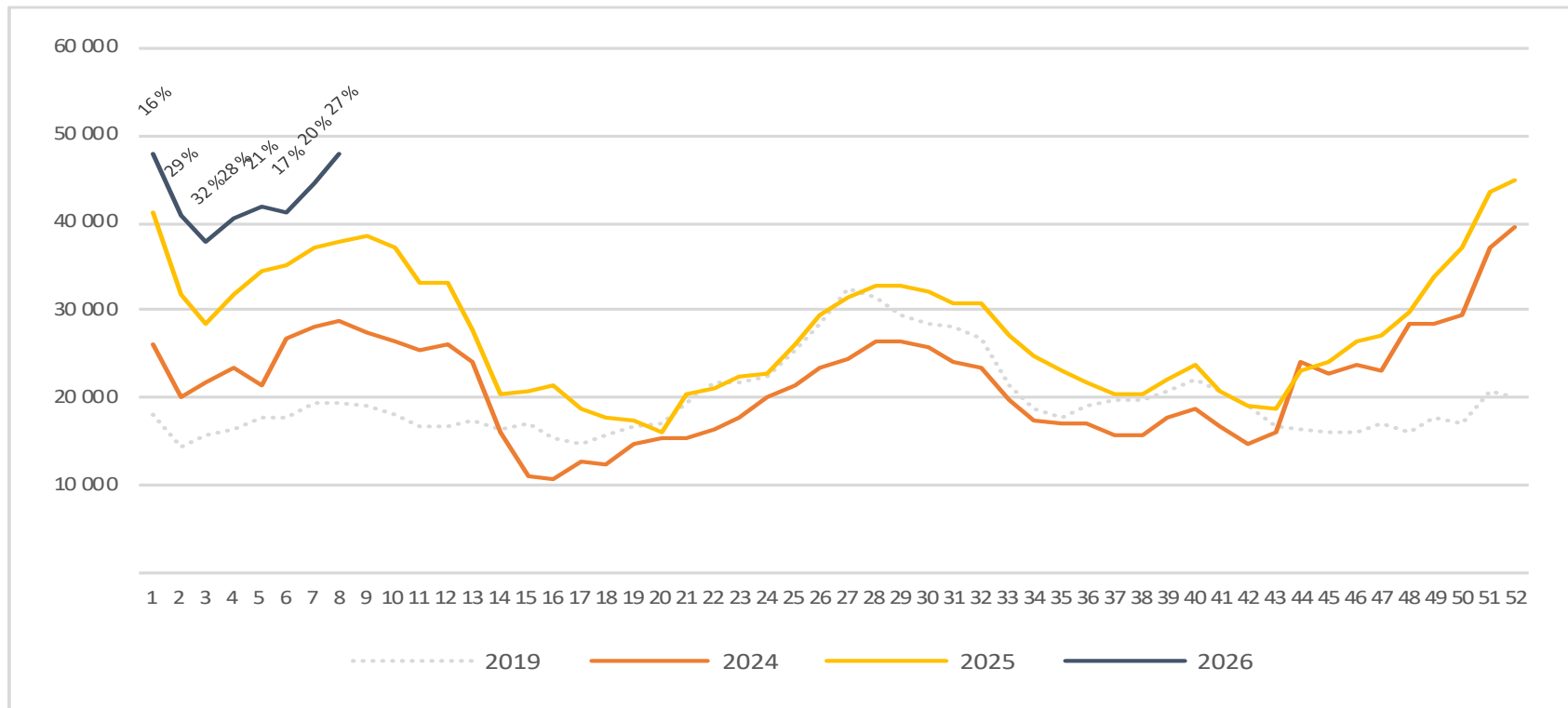
	Monday	Tuesday	Wednesday	Thursday	Friday	Saturday	Sunday
2019	30 166	26 303	28 689	33 533	34 609	16 018	31 459
2024	31 339	24 955	28 343	31 382	33 283	14 332	29 842
2025	30 934	27 699	30 231	34 552	33 125	17 814	34 868
2026	36 163	31 526	35 270	38 442	35 386	21 858	36 002

# Passengers Regional and local airports total per week

The change is measured against the same week last year

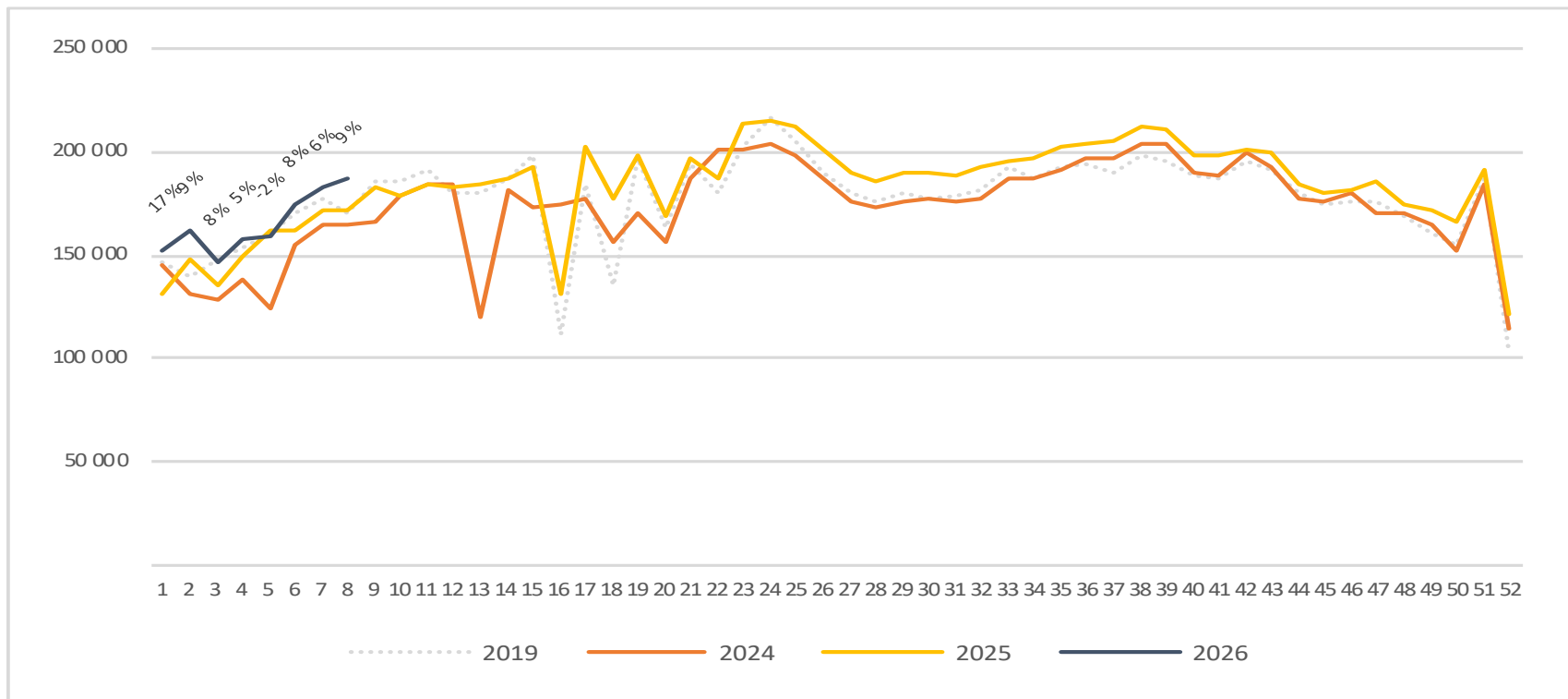


# Passengers Regional and local airports international per week



# Passengers Regional and local airports domestic per week

The change is measured against the same week last year



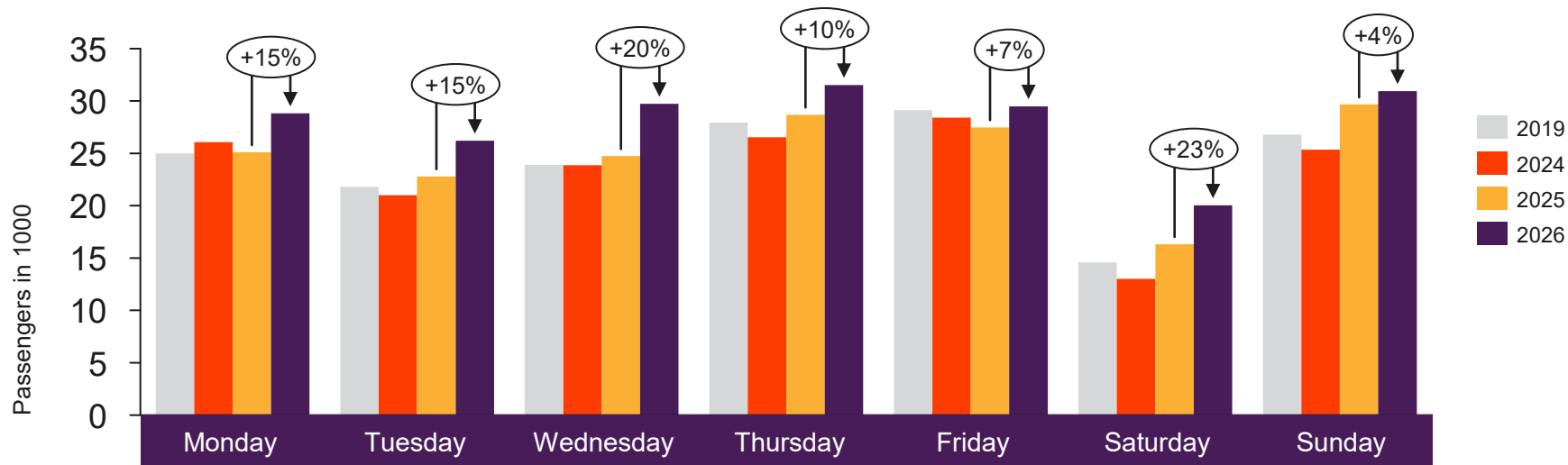


[Return to content  
page](#)

# Regional airports

Total passenger numbers from Alta, Bodø, Harstad/Narvik, Kirkenes, Kristiansand, Kristiansund, Molde, Svalbard, Tromsø and Ålesund

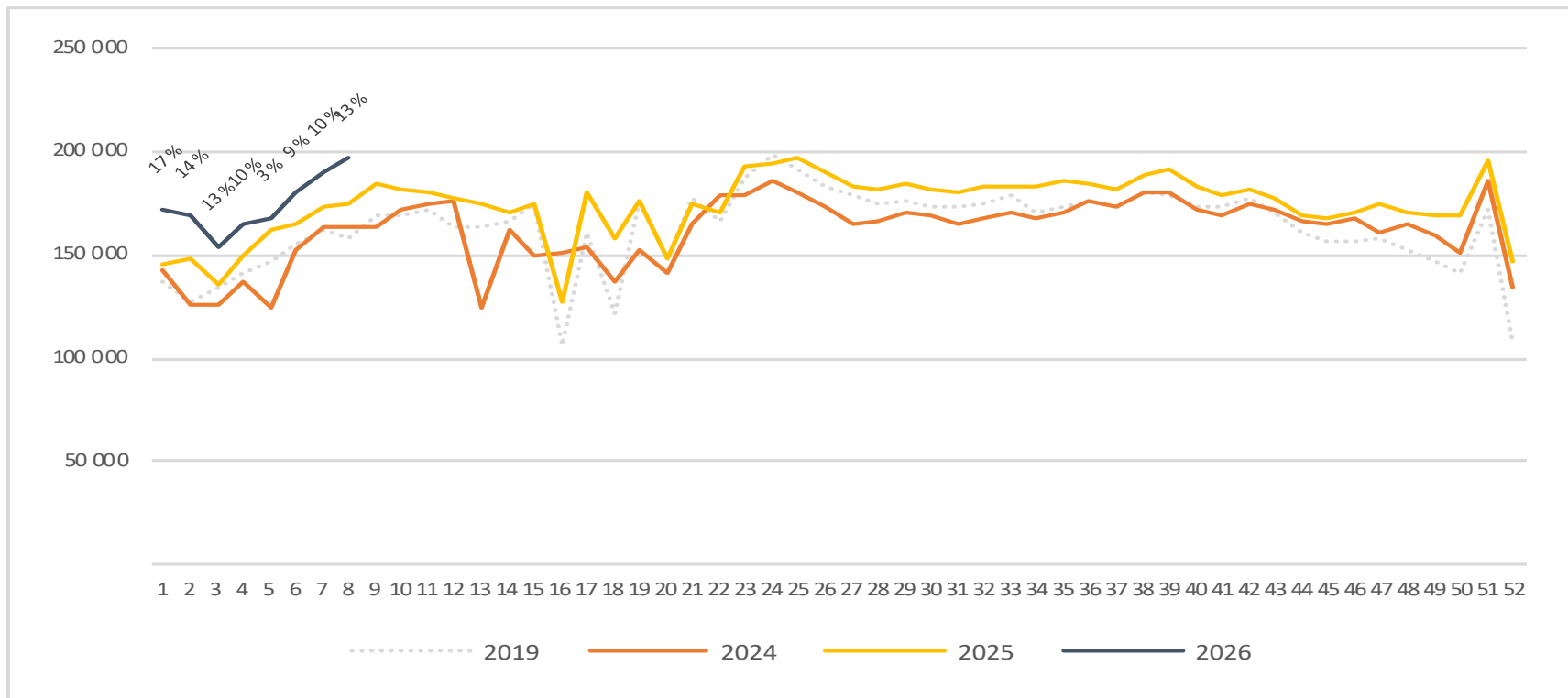
# Passengers Regional airports total per day week 8



	Monday	Tuesday	Wednesday	Thursday	Friday	Saturday	Sunday
2019	25 004	21 805	23 890	27 948	29 138	14 582	26 774
2024	26 078	21 016	23 860	26 549	28 418	13 010	25 352
2025	25 105	22 805	24 741	28 680	27 473	16 319	29 667
2026	28 816	26 196	29 722	31 534	29 484	20 032	30 935

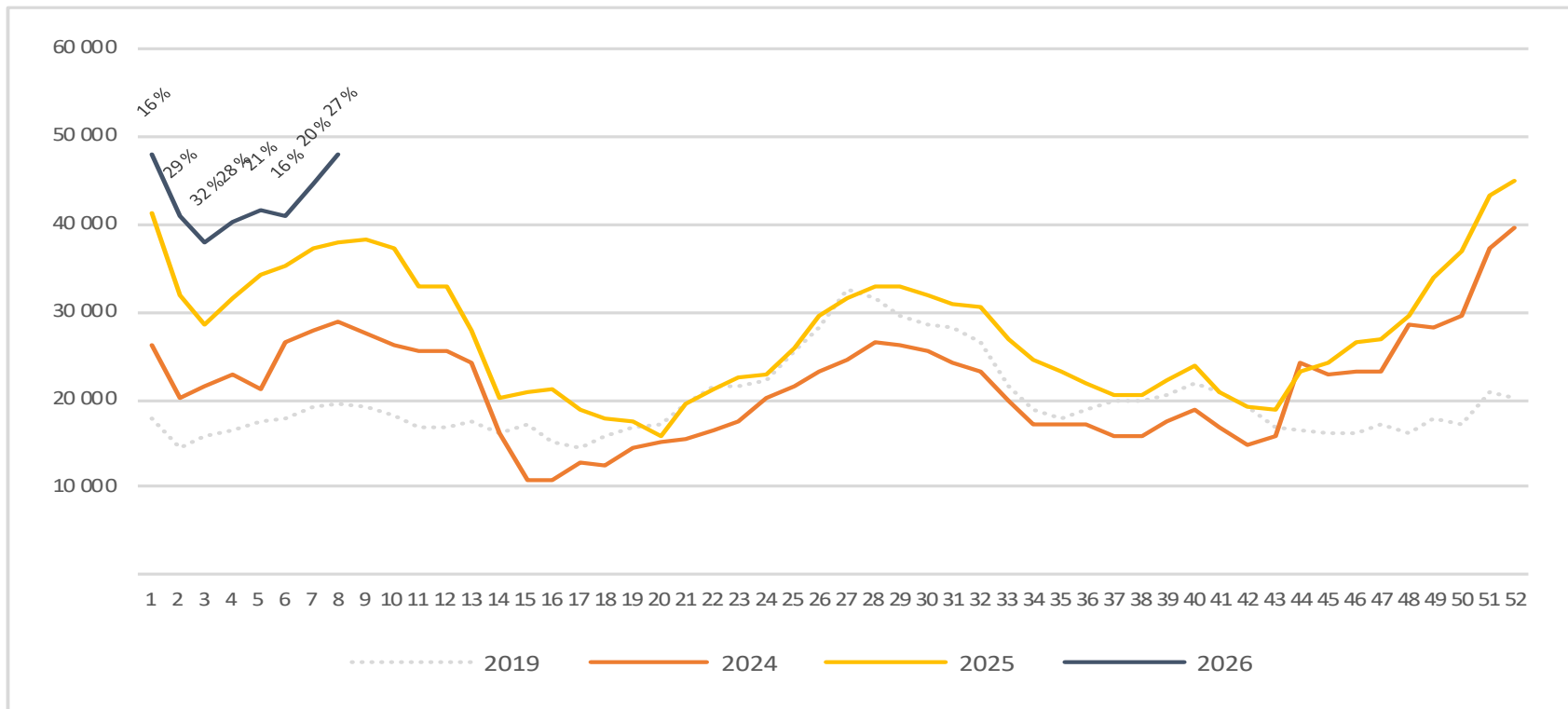
# Passengers Regional airports total per week

The change is measured against the same week last year



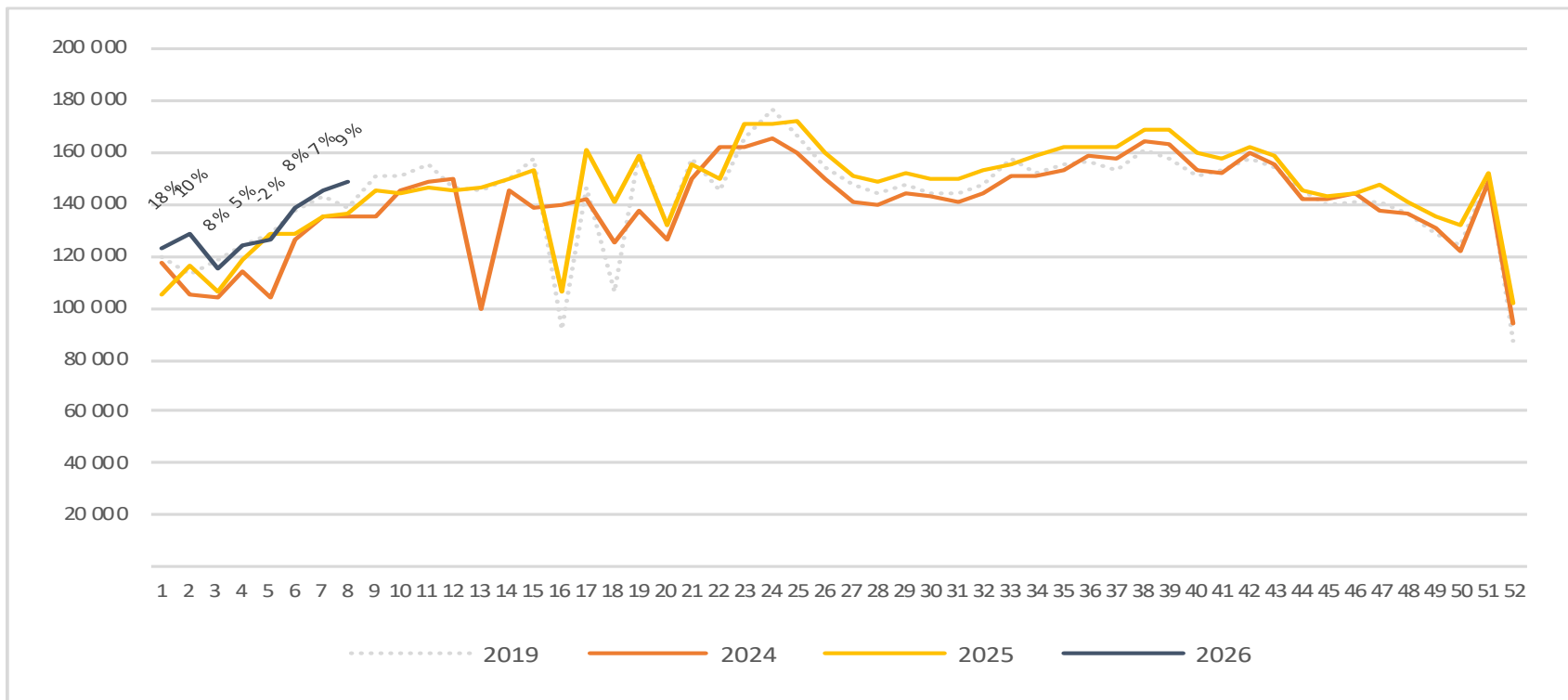
# Passengers Regional airports international per week

The change is measured against the same week last year



# Passengers Regional airports domestic per week

The change is measured against the same week last year



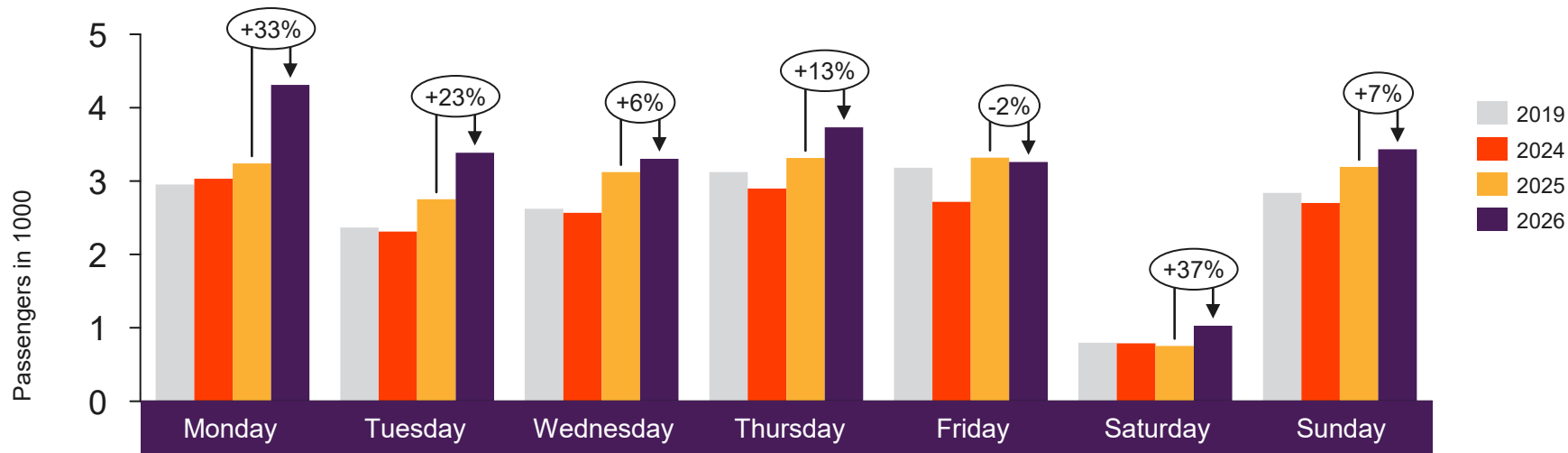


[Return to content  
page](#)

# Local Airports in Trøndelag and Nordland (Local Mid airports)

Total passenger numbers from Andenes, Bardufoss, Brønnøysund, Leknes, Mo i Rana, Mosjøen, Namsos, Rørvik, Røst, Sandnessjøen, Stokmarknes, Svolvær and Værøy

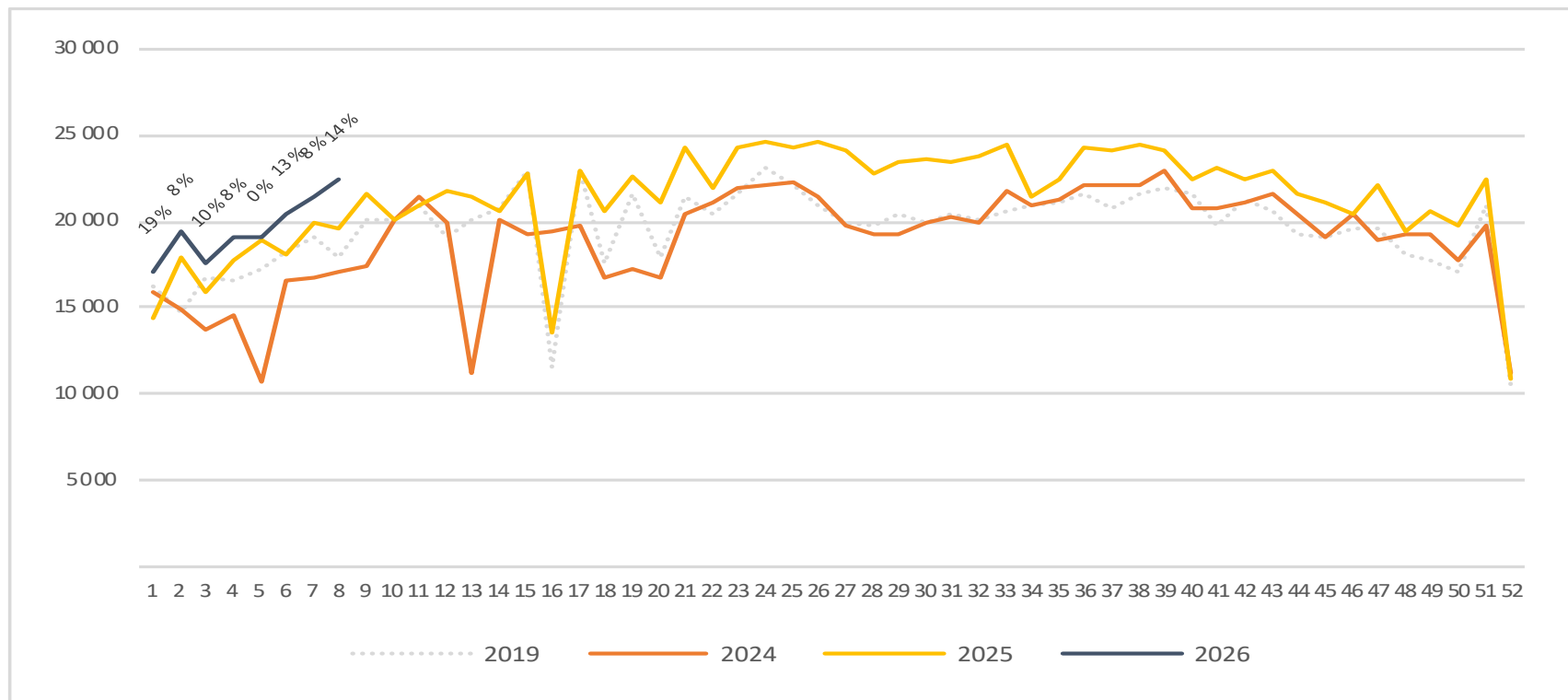
# Passengers Local Mid airports total per day week 8



	Monday	Tuesday	Wednesday	Thursday	Friday	Saturday	Sunday
2019	2 953	2 367	2 621	3 124	3 181	799	2 840
2024	3 032	2 313	2 566	2 900	2 719	790	2 700
2025	3 240	2 752	3 124	3 316	3 320	754	3 193
2026	4 309	3 387	3 302	3 734	3 260	1 030	3 432

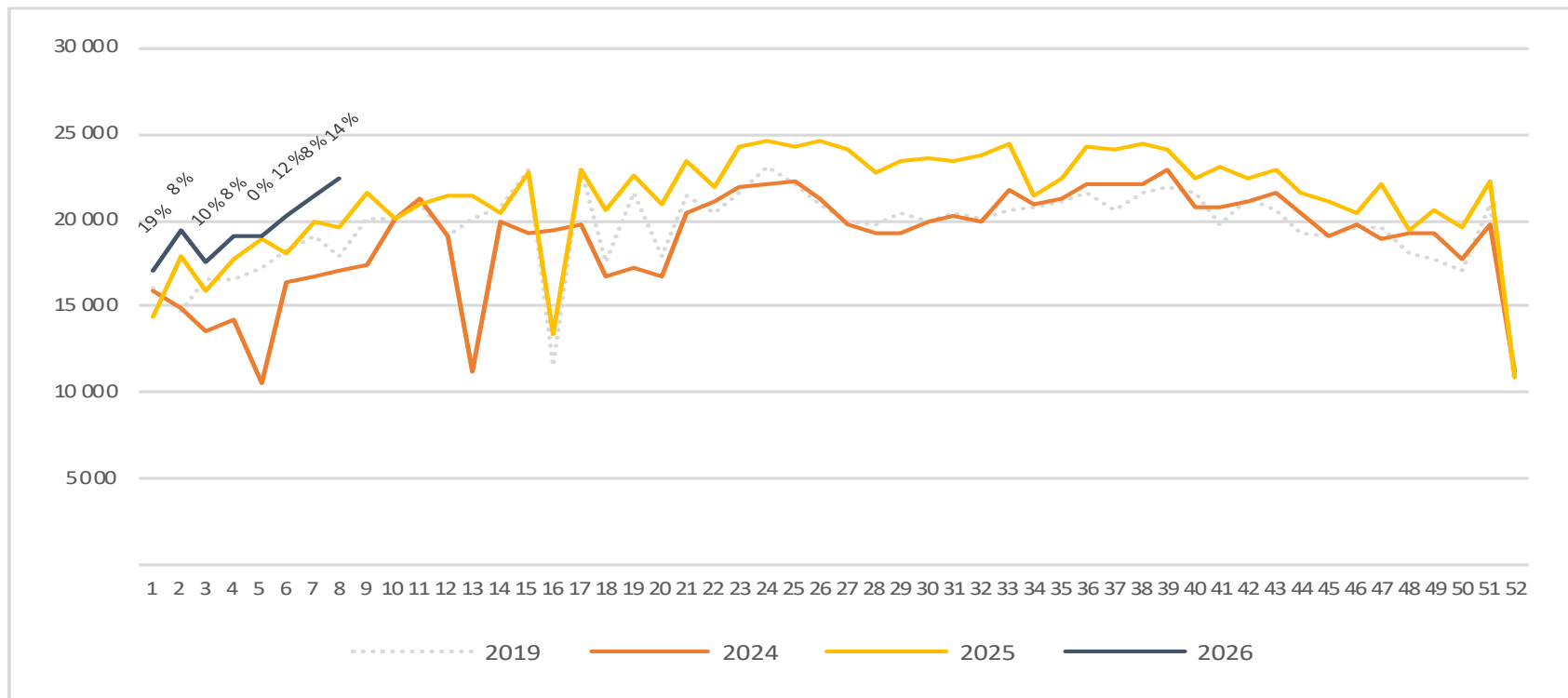
# Passengers Local Mid airports total per week

The change is measured against the same week last year



# Passengers Local Mid airports domestic per week

The change is measured against the same week last year



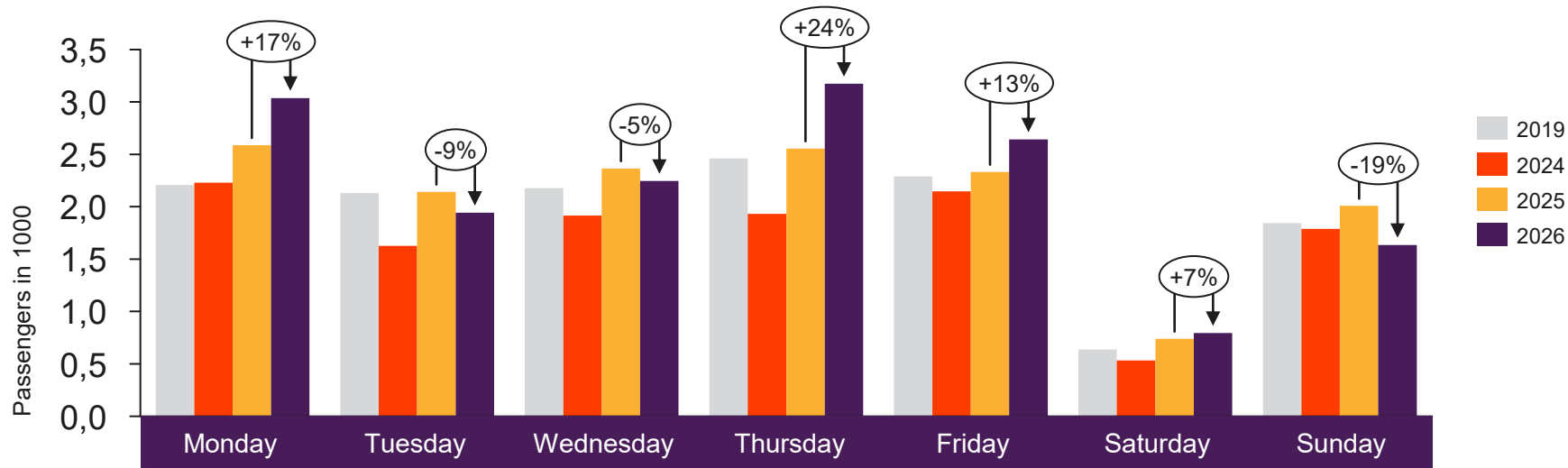


[Return to content  
page](#)

# Local airports on the West coast and in Troms and Finnmark

Total passenger numbers from Berlevåg, Båtsfjord, Florø, Førde, Hammerfest, Hasvik, Honningsvåg, Lakselv, Mehamn, Røros, Sandane, Sogndal, Sørkjosen, Vadsø, Vardø and Ørsta-Volda

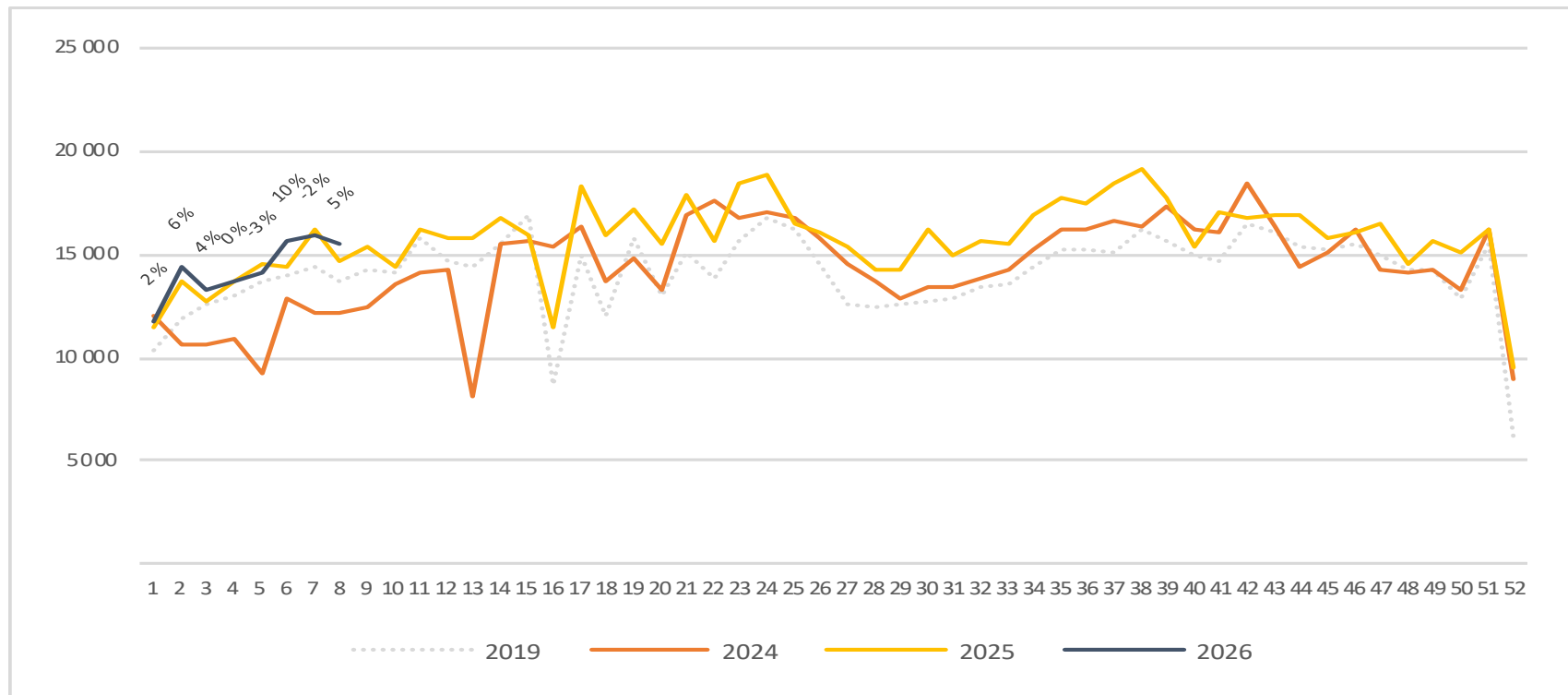
# Passengers local airports on the West coast and in Troms and Finnmark total per day week 8



	Monday	Tuesday	Wednesday	Thursday	Friday	Saturday	Sunday
2019	2 209	2 131	2 178	2 461	2 290	637	1 845
2024	2 229	1 626	1 917	1 933	2 146	532	1 790
2025	2 589	2 142	2 366	2 556	2 332	741	2 008
2026	3 038	1 943	2 246	3 174	2 642	796	1 635

# Passengers local airports on the West coast and in Troms and Finnmark total per week

The change is measured against the same week last year



# Passengers local airports on the West coast and in Troms and Finnmark domestic per week

The change is measured against the same week last year

