



Passenger numbers per week

Preliminary figures

- The figures for the previous week are preliminary. It takes some time for all passenger numbers to be reported, so the figures for the previous week may be lower than the final figures.
- The figures are from SIA, Avinor's traffic database.

Content

- Top 10 airports
- Avinor total
- Selected airports
- The 4 biggest airports
- Regional and local airports
 - Regional airports
 - Local airports in Trøndelag and Nordland
 - Local airports on the west coast of Norway and in Troms and Finnmark

Top 10 airports, total, week 7

Airport	2019	2024	2025	2026	2026 vs. 2025	
					Change	Change %
Oslo	516 745	437 905	457 529	474 527	16 998	4 %
Bergen	106 679	107 162	107 165	110 295	3 130	3 %
Tromsø	50 696	59 405	66 323	77 254	10 931	16 %
Trondheim	85 552	74 899	73 338	75 781	2 443	3 %
Stavanger	71 924	64 275	63 999	65 264	1 265	2 %
Bodø	30 606	30 737	31 918	34 545	2 627	8 %
Ålesund	20 278	18 442	18 816	17 570	-1 246	-7 %
Harstad/Narvik	12 687	14 980	13 362	17 408	4 046	30 %
Kristiansand	20 406	14 755	14 727	15 291	564	4 %
Alta	6 588	5 576	6 833	7 211	378	6 %

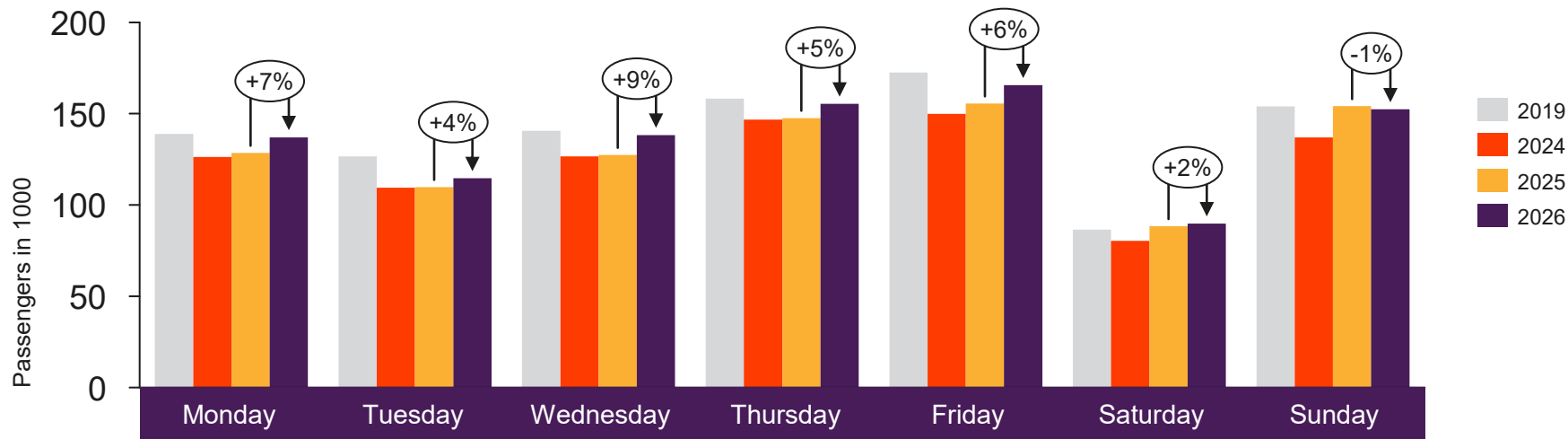


[Return to content
page](#)

Avinor total

Passenger numbers for all Avinor airports

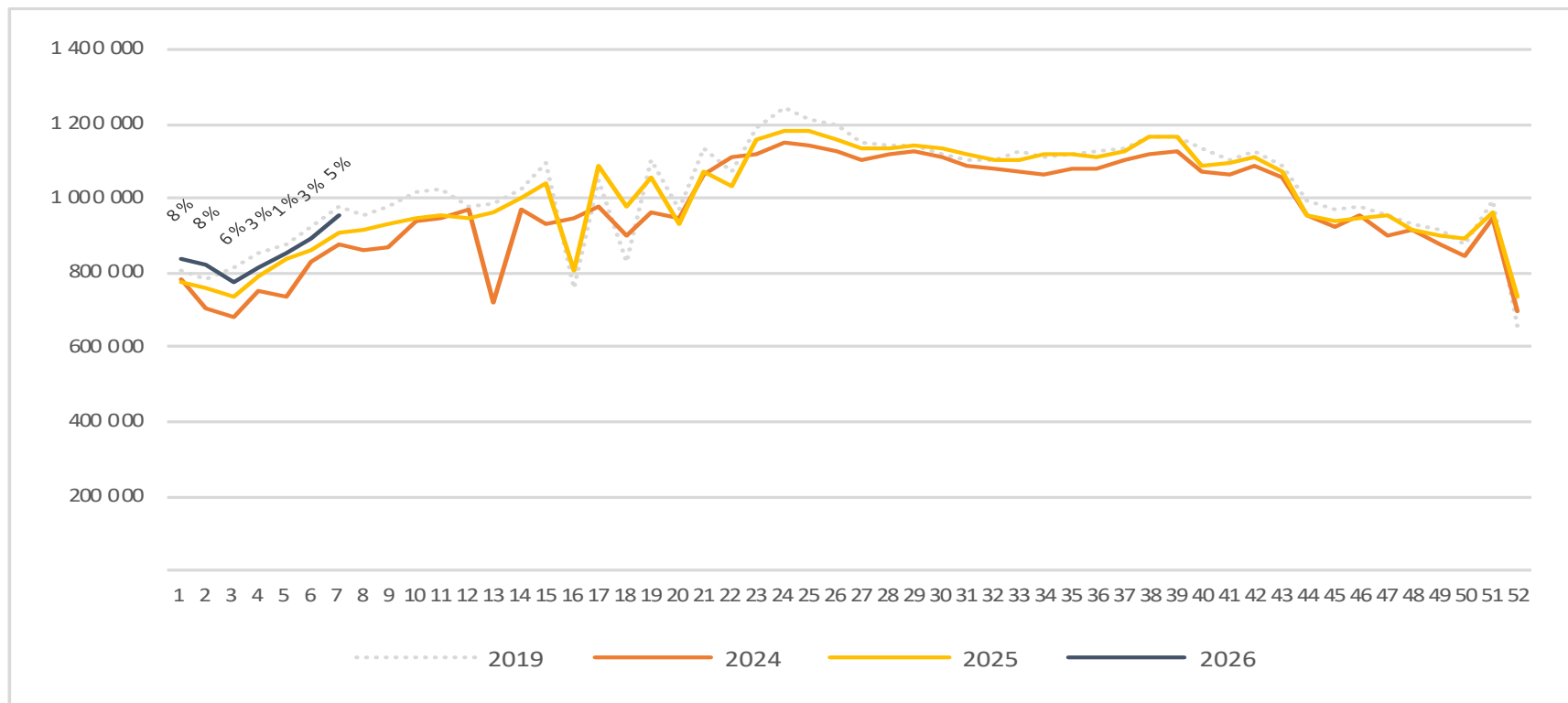
Passengers Avinor total per day week 7



	Monday	Tuesday	Wednesday	Thursday	Friday	Saturday	Sunday
2019	138 940	126 654	140 584	158 227	172 583	86 461	154 011
2024	126 338	109 426	126 610	146 772	149 907	80 325	137 065
2025	128 490	109 804	127 397	147 632	155 541	88 404	154 148
2026	137 075	114 612	138 300	155 420	165 644	89 835	152 365

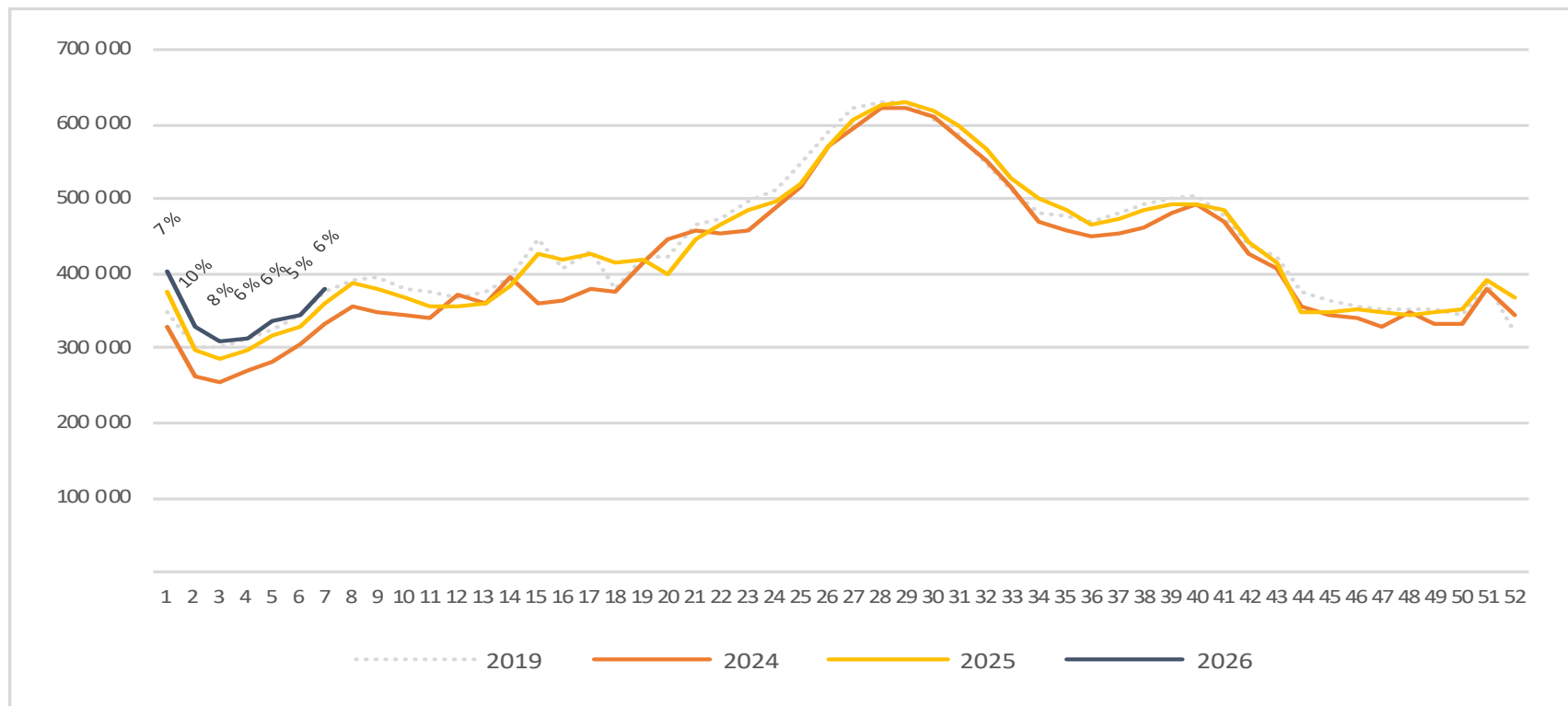
Passengers Avinor total per week

The change is measured against the same week last year



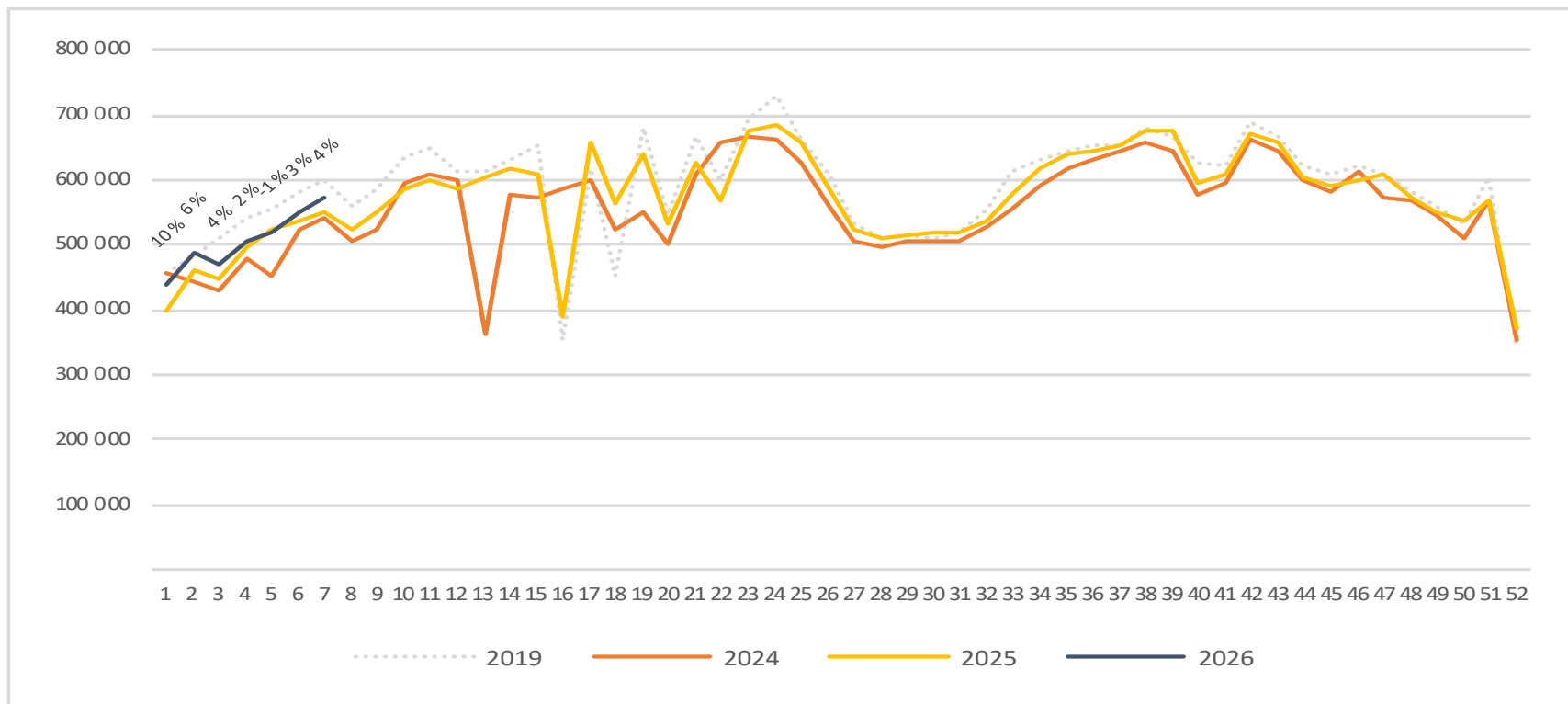
Passengers Avinor international per week

The change is measured against the same week last year



Passengers Avinor domestic per week

The change is measured against the same week last year

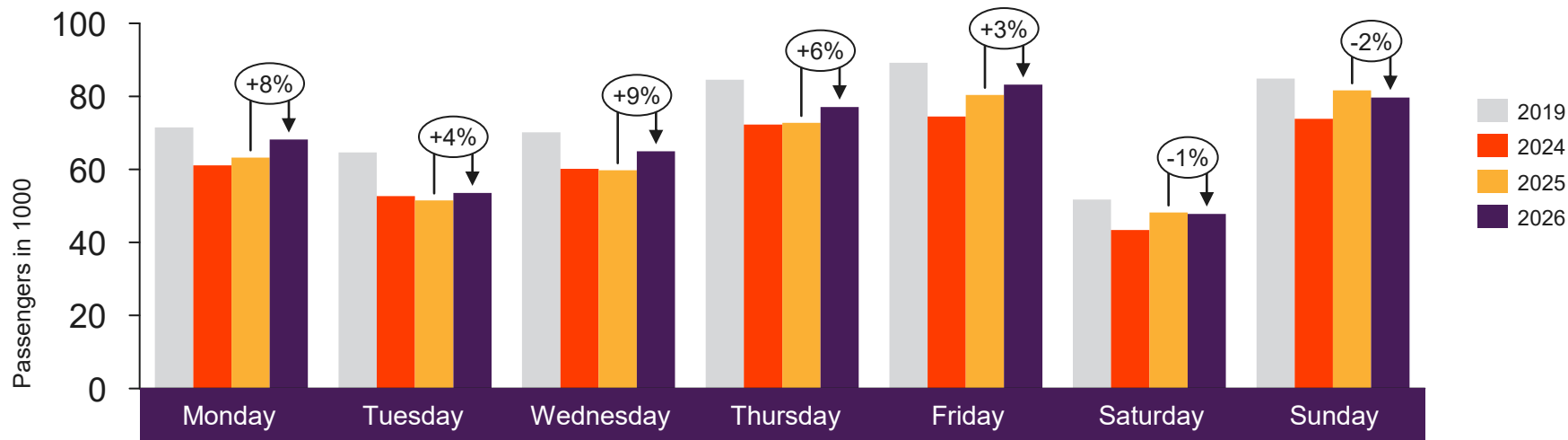




[Return to content page](#)

Selected airports

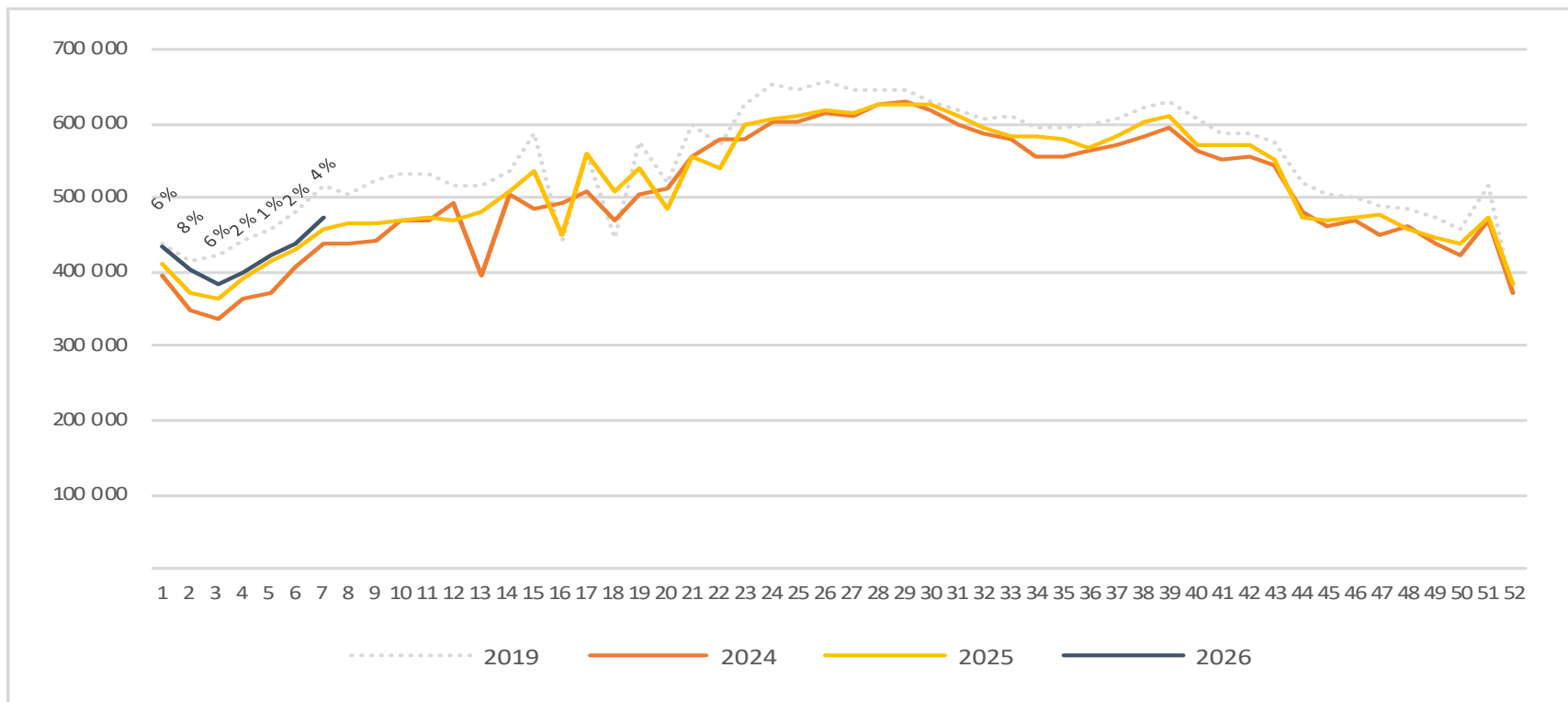
Passengers OSL total per day week 7



2019	71 533	64 623	70 196	84 576	89 216	51 738	84 863
2024	61 097	52 672	60 159	72 250	74 463	43 440	73 824
2025	63 251	51 512	59 751	72 734	80 417	48 232	81 632
2026	68 151	53 524	64 953	77 121	83 220	47 843	79 715

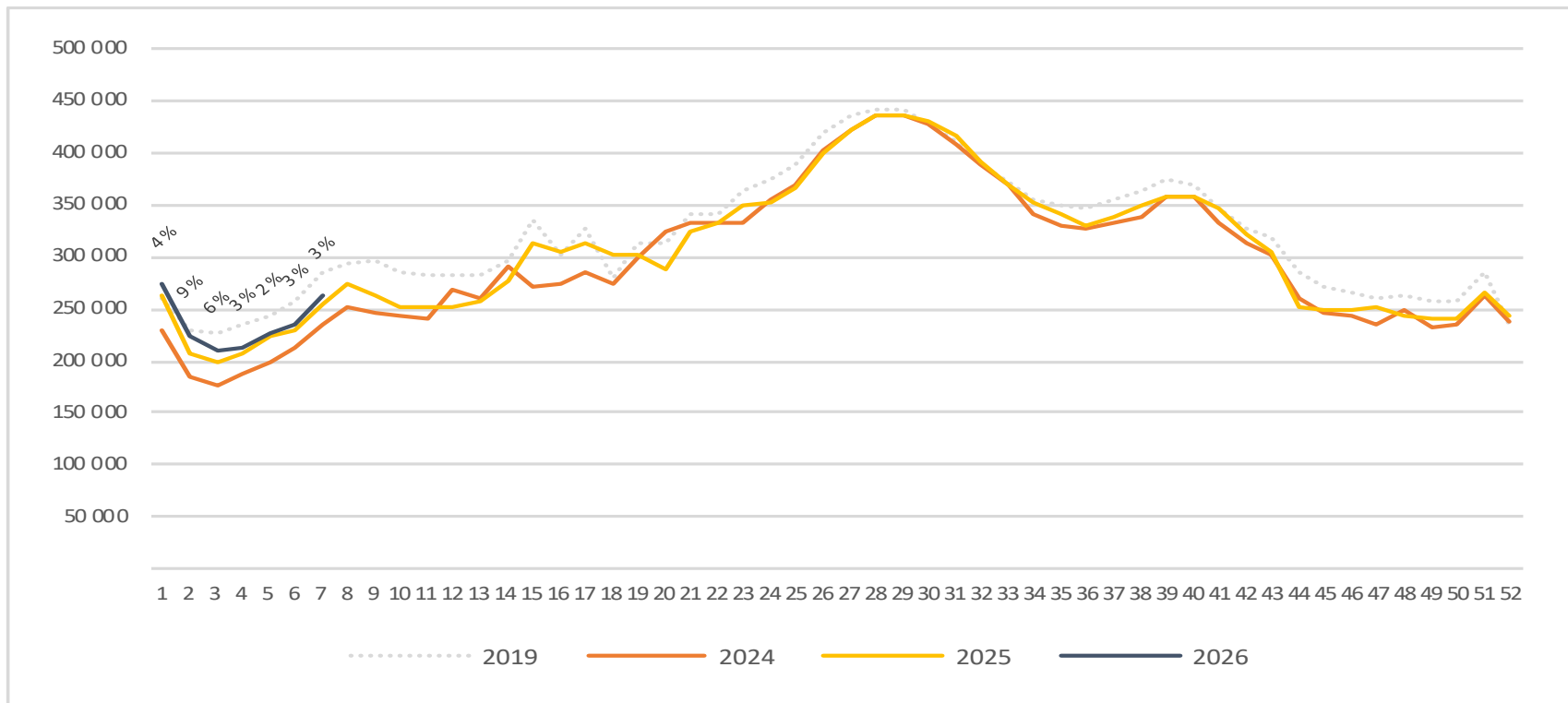
Passengers OSL total per week

The change is measured against the same week last year



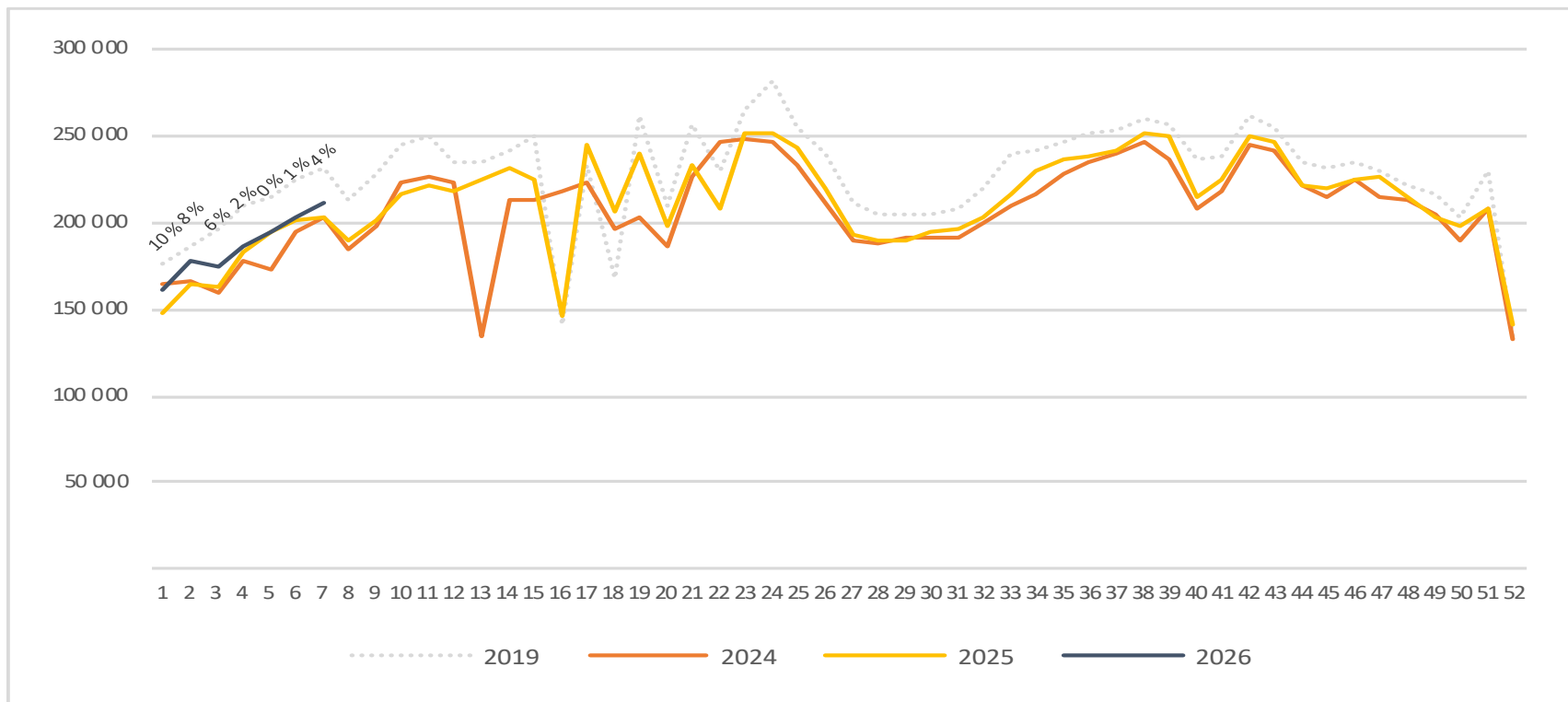
Passengers OSL international per week

The change is measured against the same week last year

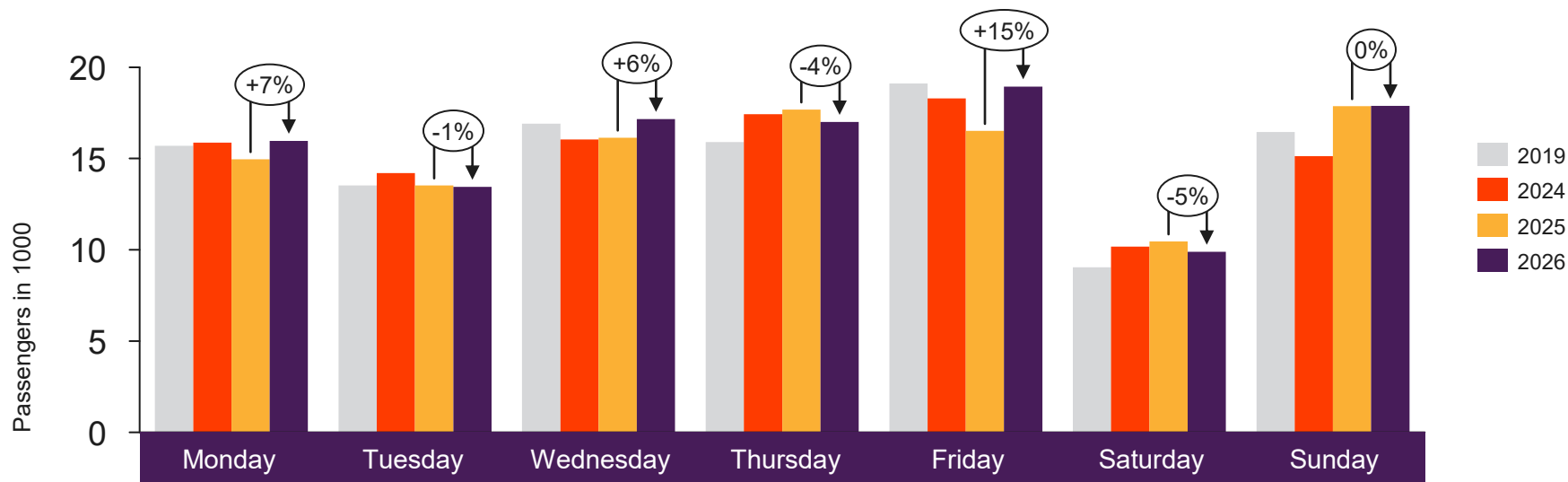


Passengers OSL domestic per week

The change is measured against the same week last year



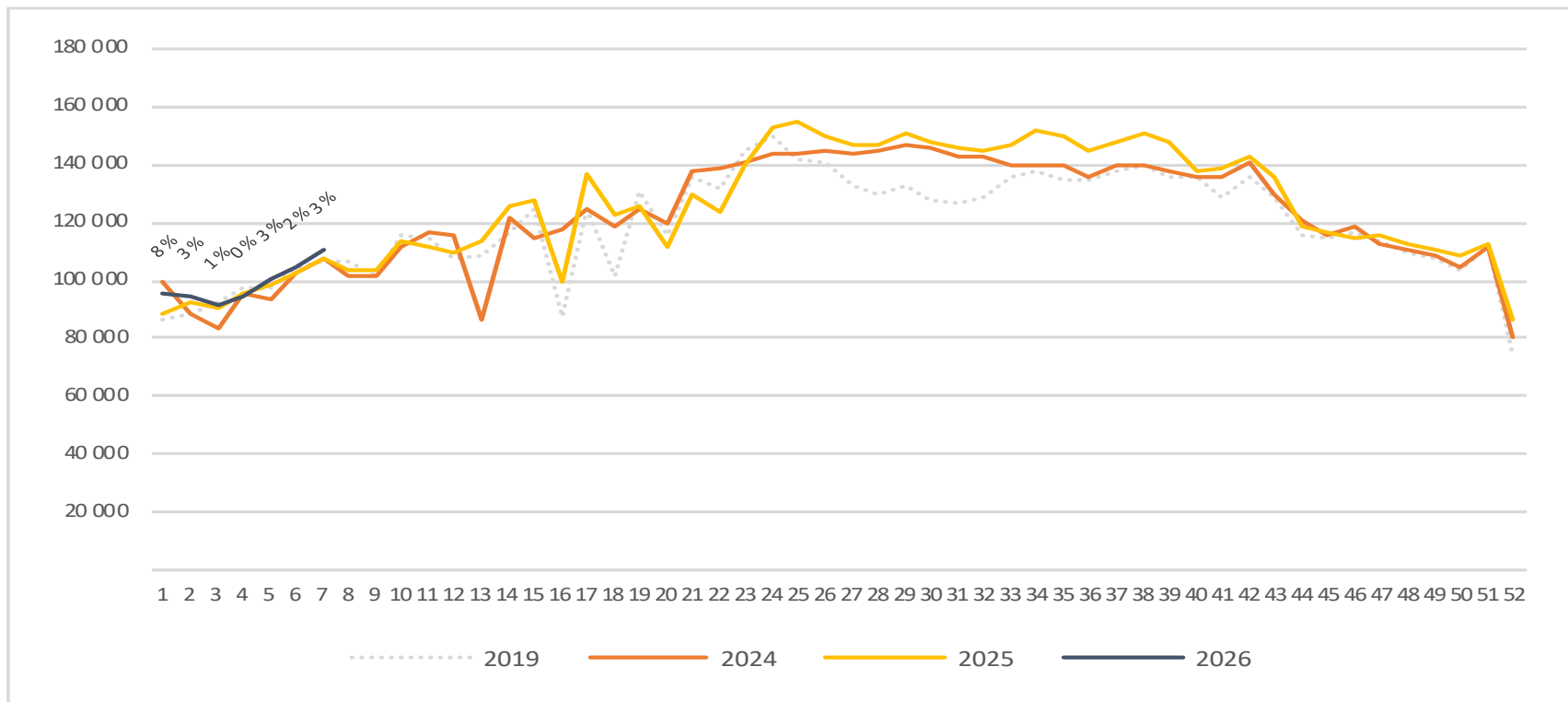
Passengers BGO total per day week 7



	Monday	Tuesday	Wednesday	Thursday	Friday	Saturday	Sunday
2019	15 705	13 524	16 919	15 904	19 120	9 050	16 457
2024	15 880	14 204	16 039	17 431	18 300	10 176	15 132
2025	14 963	13 523	16 147	17 687	16 511	10 457	17 877
2026	15 964	13 446	17 157	17 002	18 945	9 889	17 892

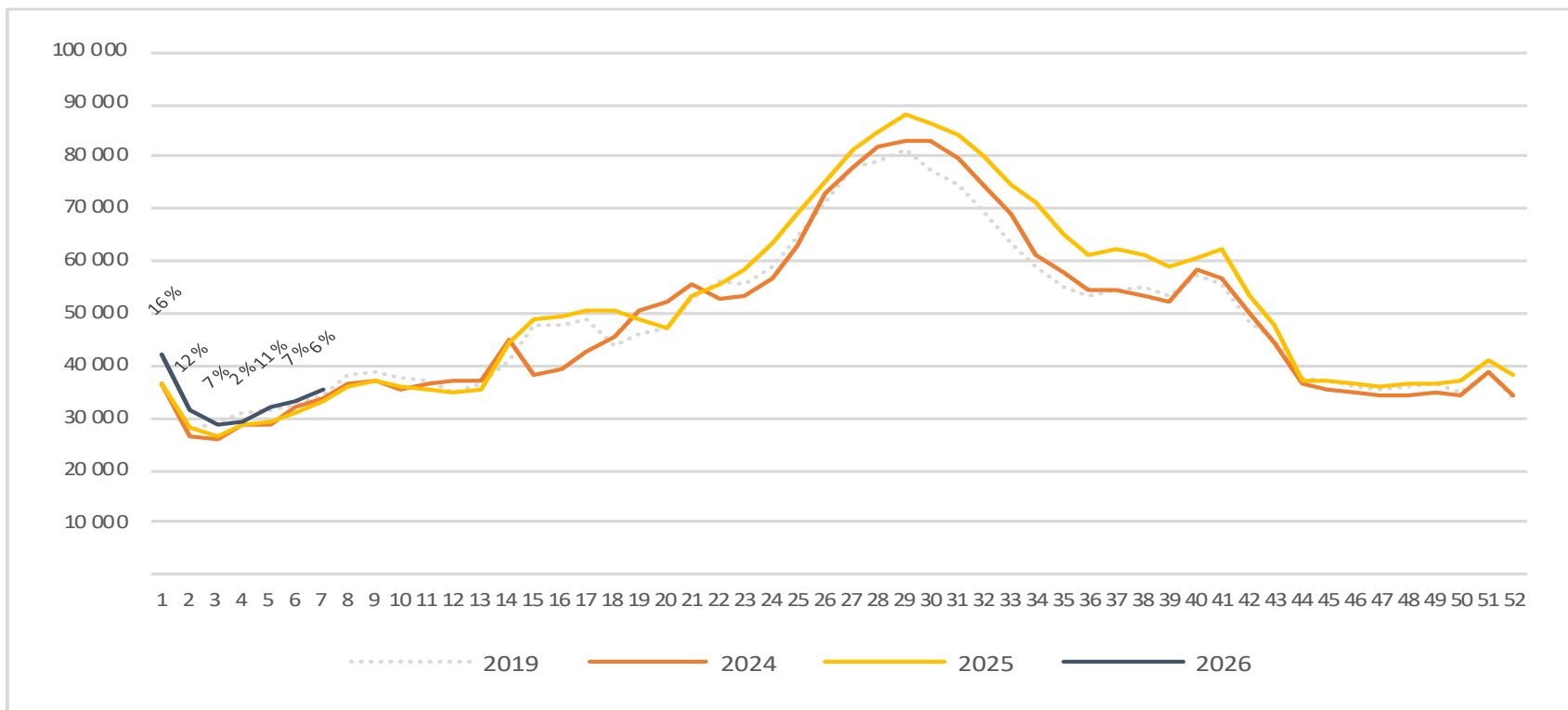
Passengers BGO total per week

The change is measured against the same week last year



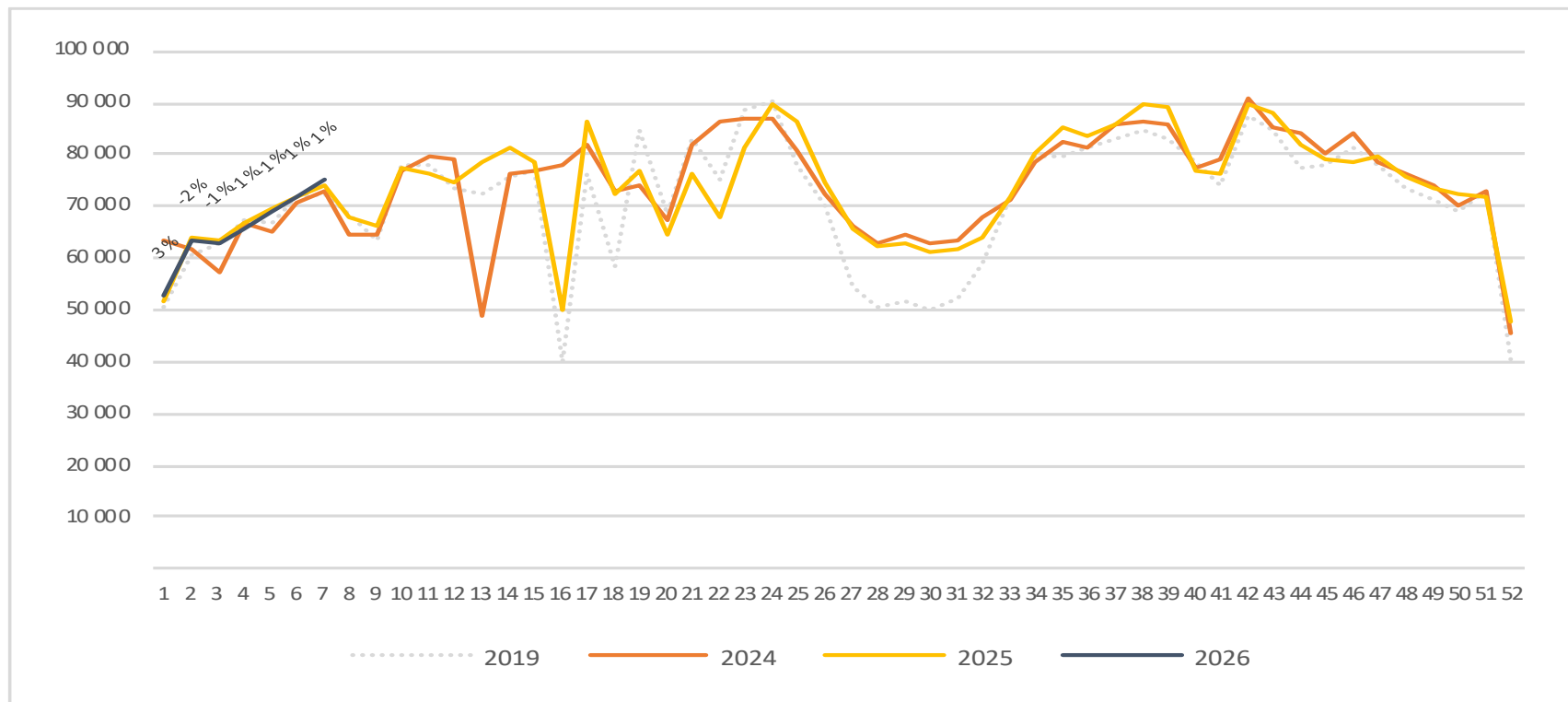
Passengers BGO international per week

The change is measured against the same week last year

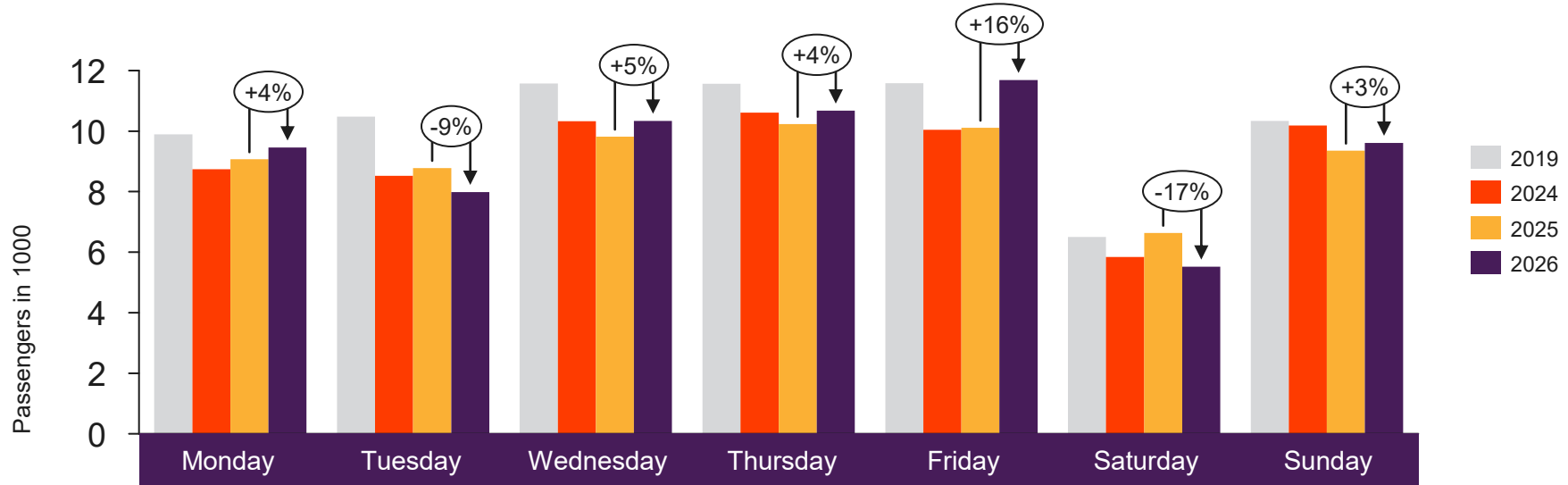


Passengers BGO domestic per week

The change is measured against the same week last year



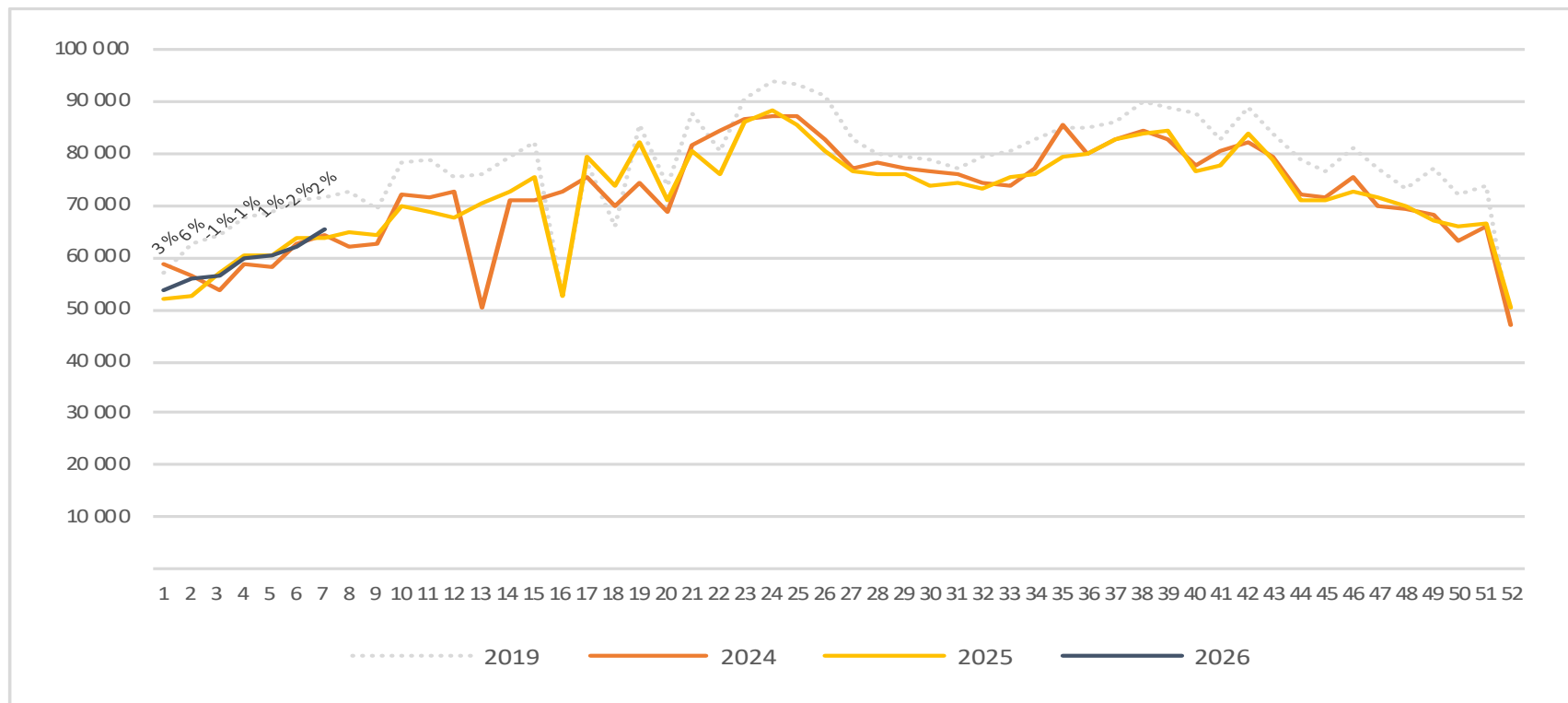
Passengers SVG total per day week 7



2019	9 890	10 475	11 574	11 561	11 580	6 506	10 338
2024	8 743	8 527	10 322	10 613	10 046	5 837	10 187
2025	9 066	8 779	9 812	10 235	10 113	6 636	9 358
2026	9 455	7 982	10 337	10 676	11 688	5 517	9 609

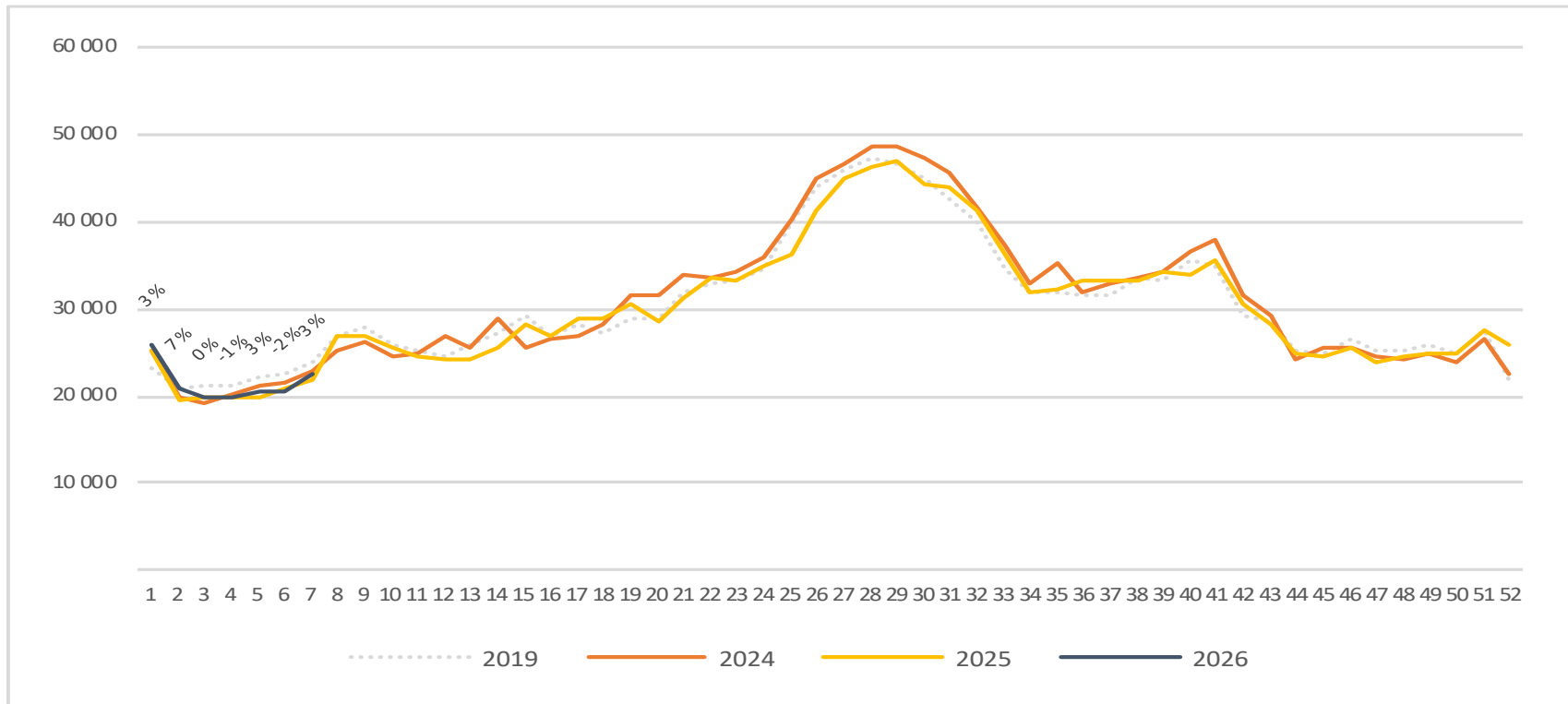
Passengers SVG total per week

The change is measured against the same week last year



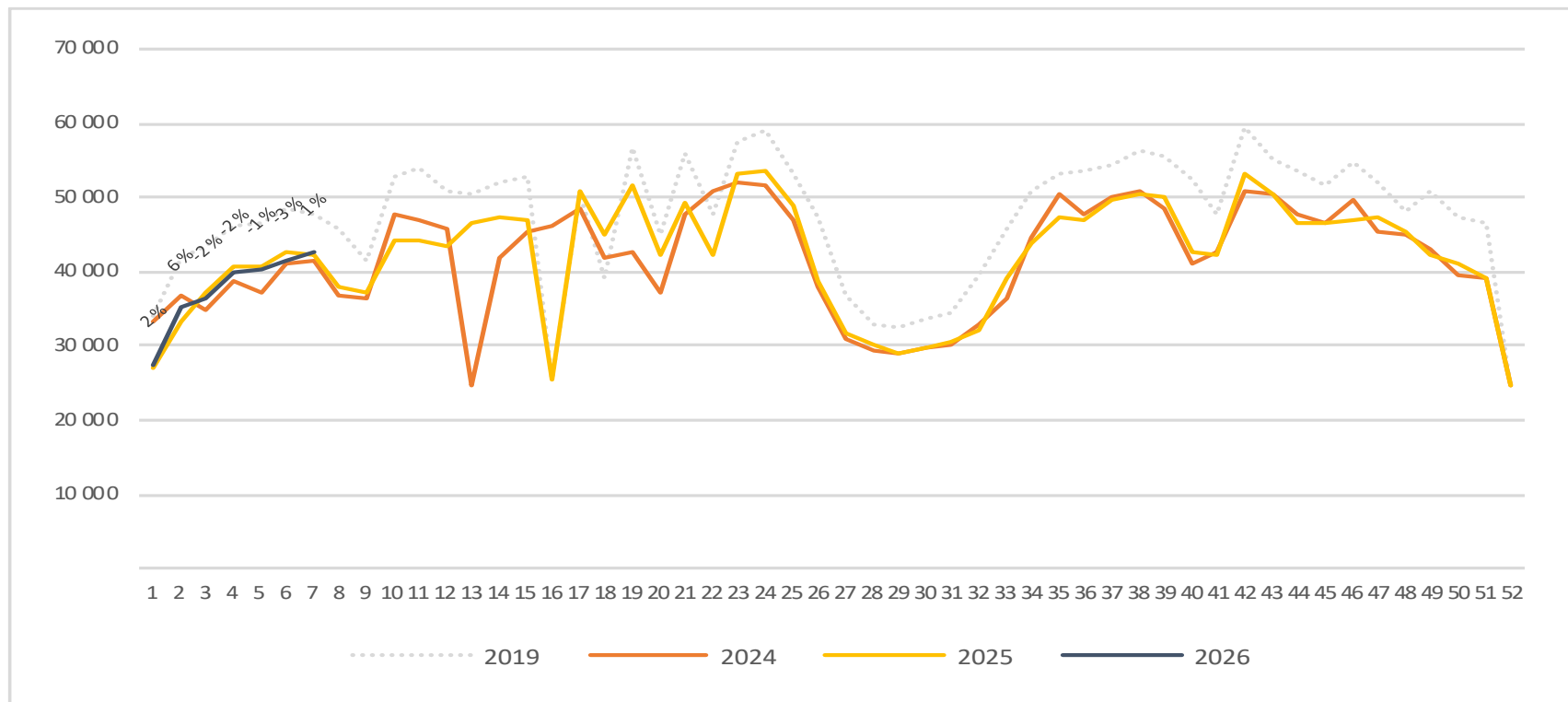
Passengers SVG international per week

The change is measured against the same week last year

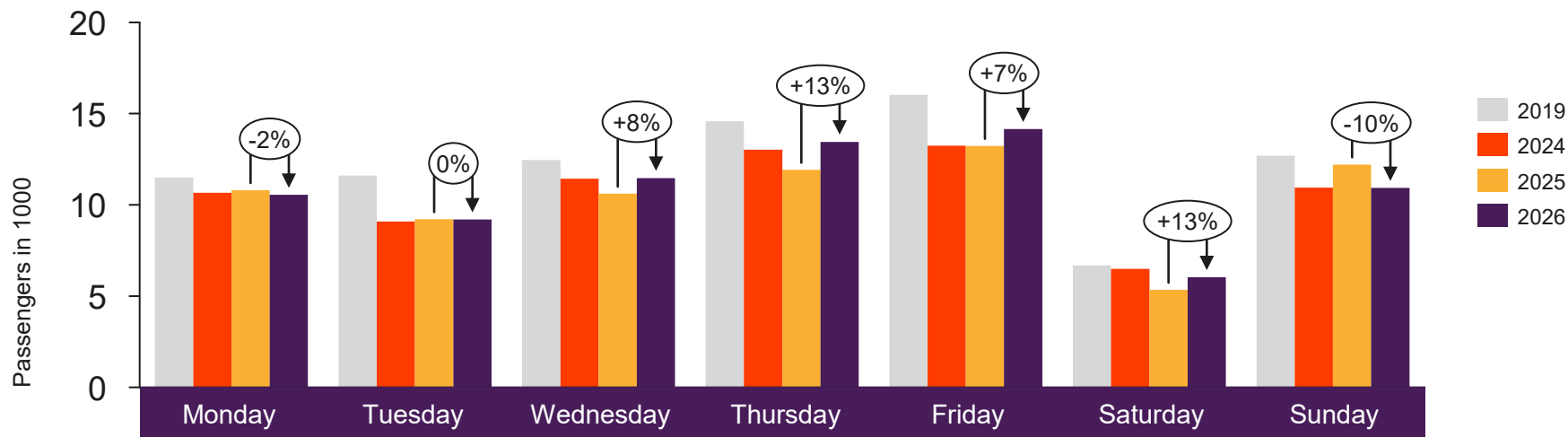


Passengers SVG domestic per week

The change is measured against the same week last year



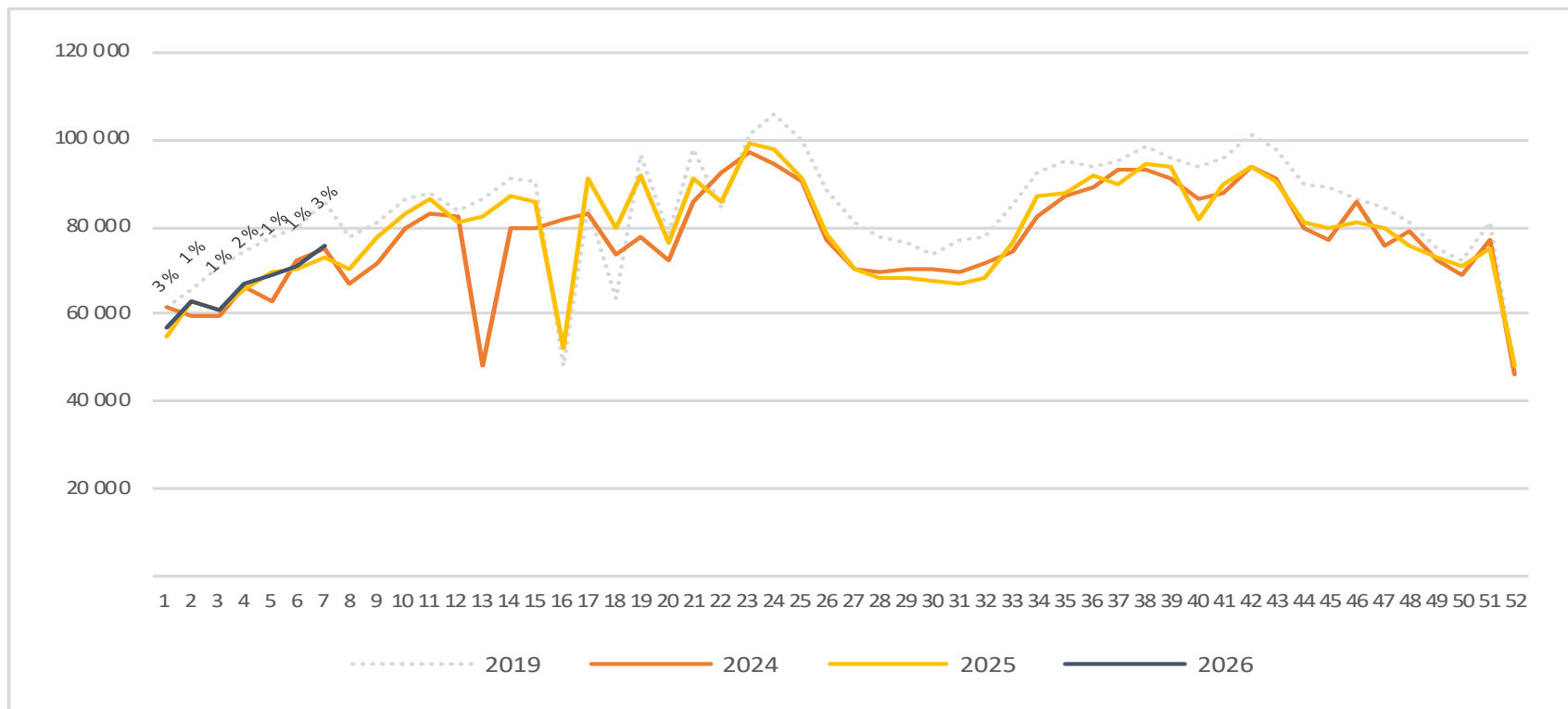
Passengers TRD total per day week 7



	Monday	Tuesday	Wednesday	Thursday	Friday	Saturday	Sunday
2019	11 497	11 602	12 464	14 581	16 036	6 676	12 696
2024	10 665	9 093	11 430	13 025	13 244	6 494	10 948
2025	10 807	9 219	10 614	11 920	13 236	5 337	12 205
2026	10 548	9 194	11 472	13 453	14 154	6 034	10 926

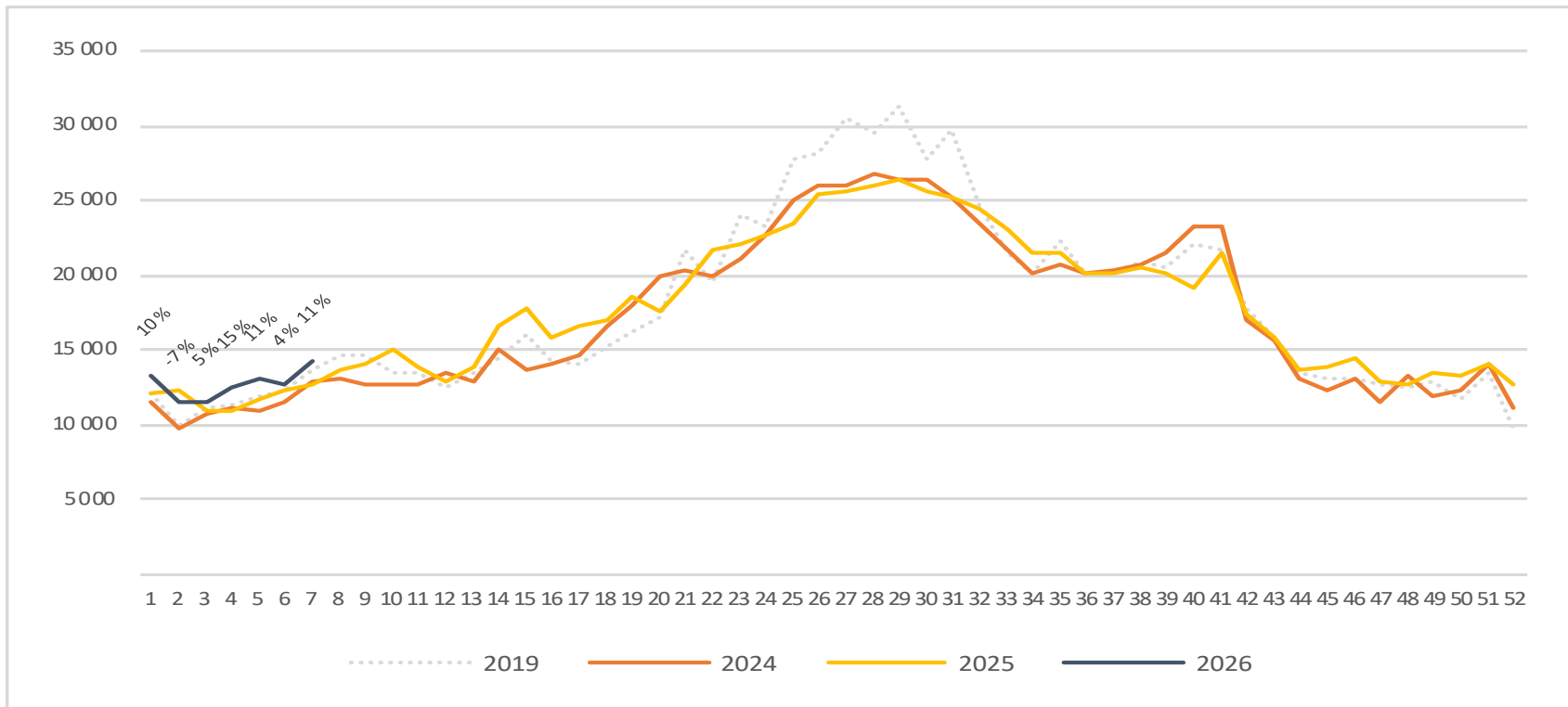
Passengers TRD total per week

The change is measured against the same week last year



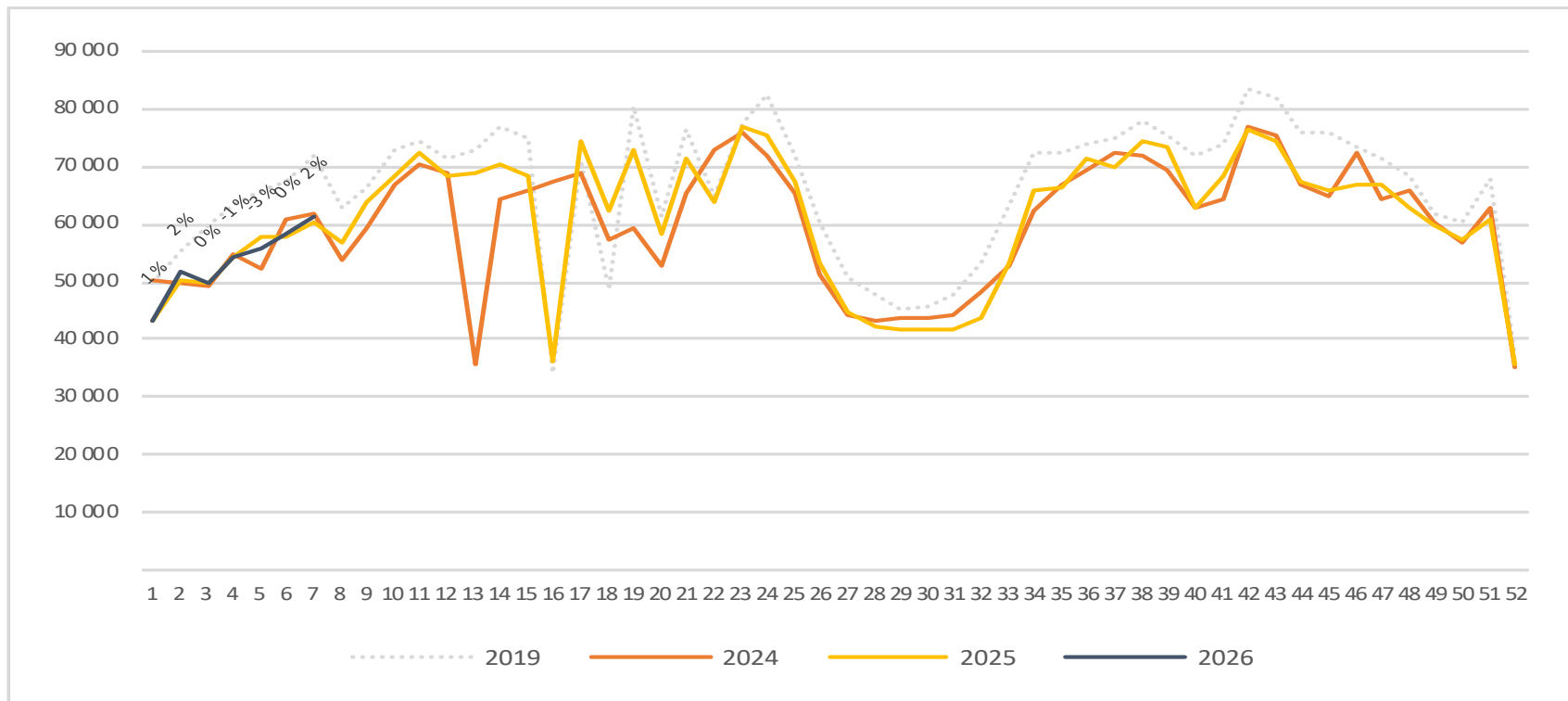
Passengers TRD international per week

The change is measured against the same week last year

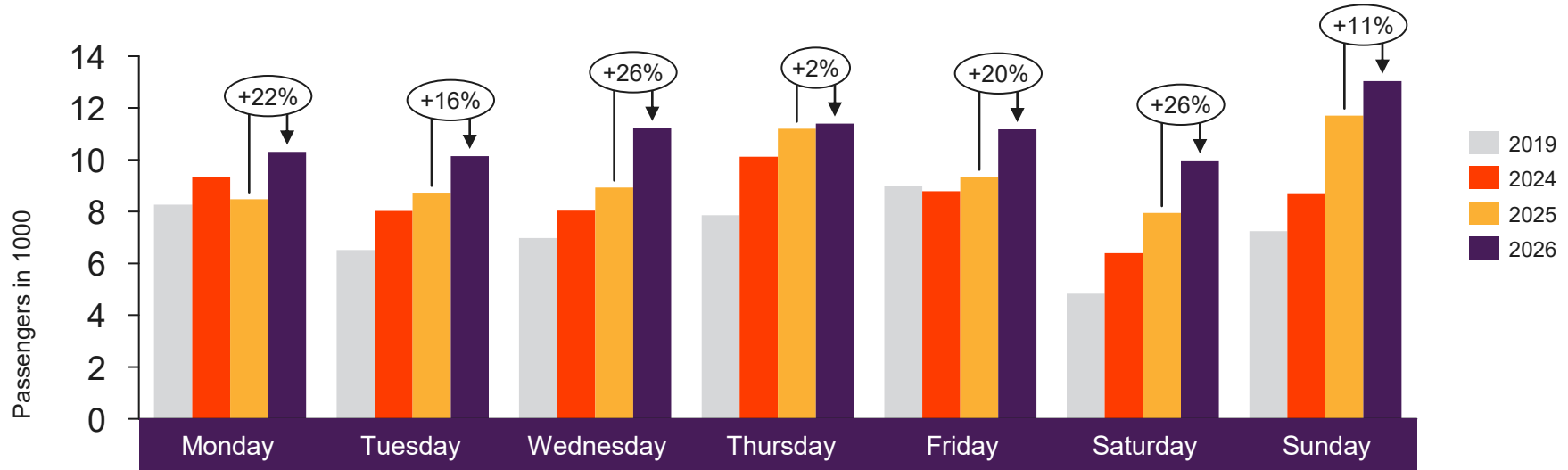


Passengers TRD domestic per week

The change is measured against the same week last year



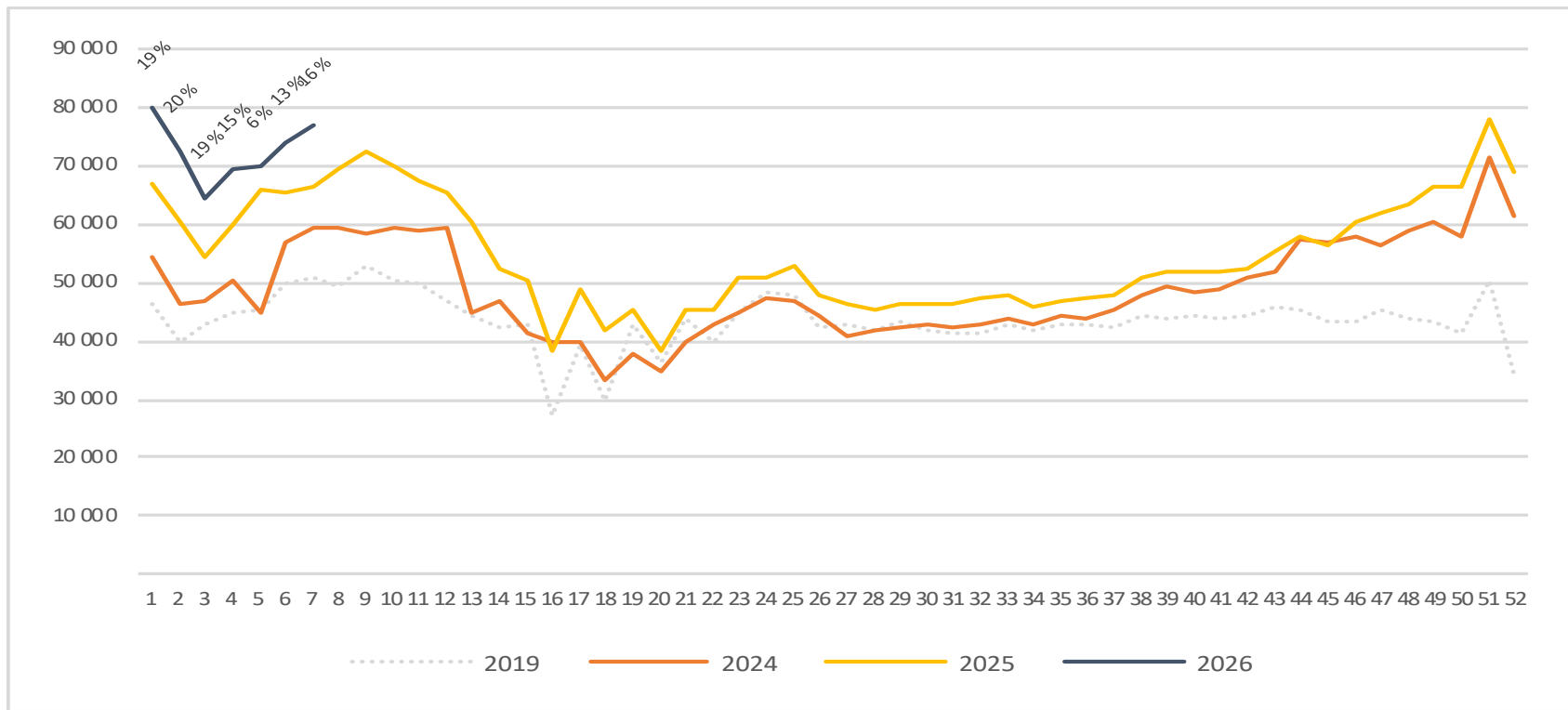
Passengers TOS total per day week 7



	Monday	Tuesday	Wednesday	Thursday	Friday	Saturday	Sunday
2019	8 272	6 518	6 978	7 865	8 982	4 837	7 244
2024	9 321	8 027	8 041	10 123	8 790	6 394	8 709
2025	8 474	8 726	8 933	11 196	9 341	7 945	11 708
2026	10 302	10 146	11 222	11 396	11 173	9 971	13 044

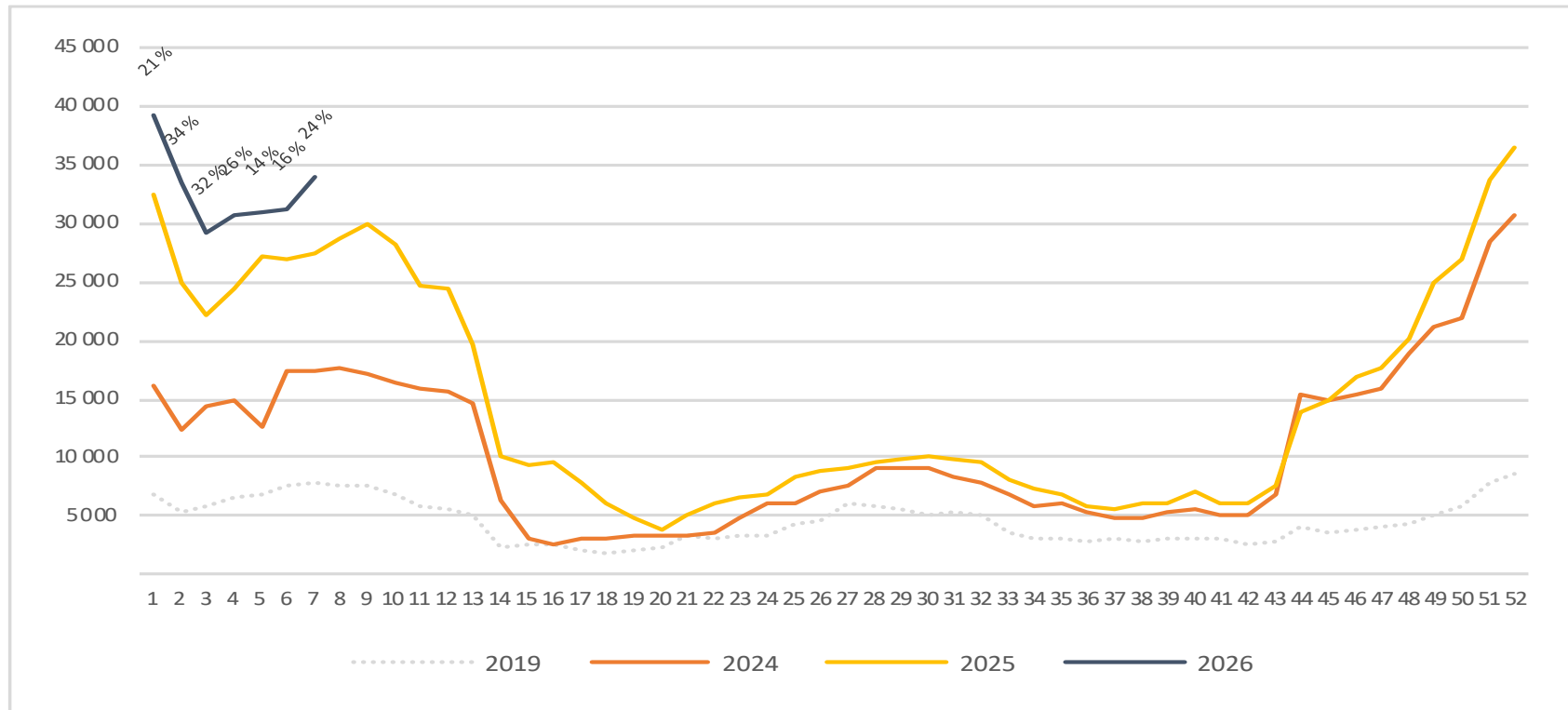
Passengers TOS total per week

The change is measured against the same week last year



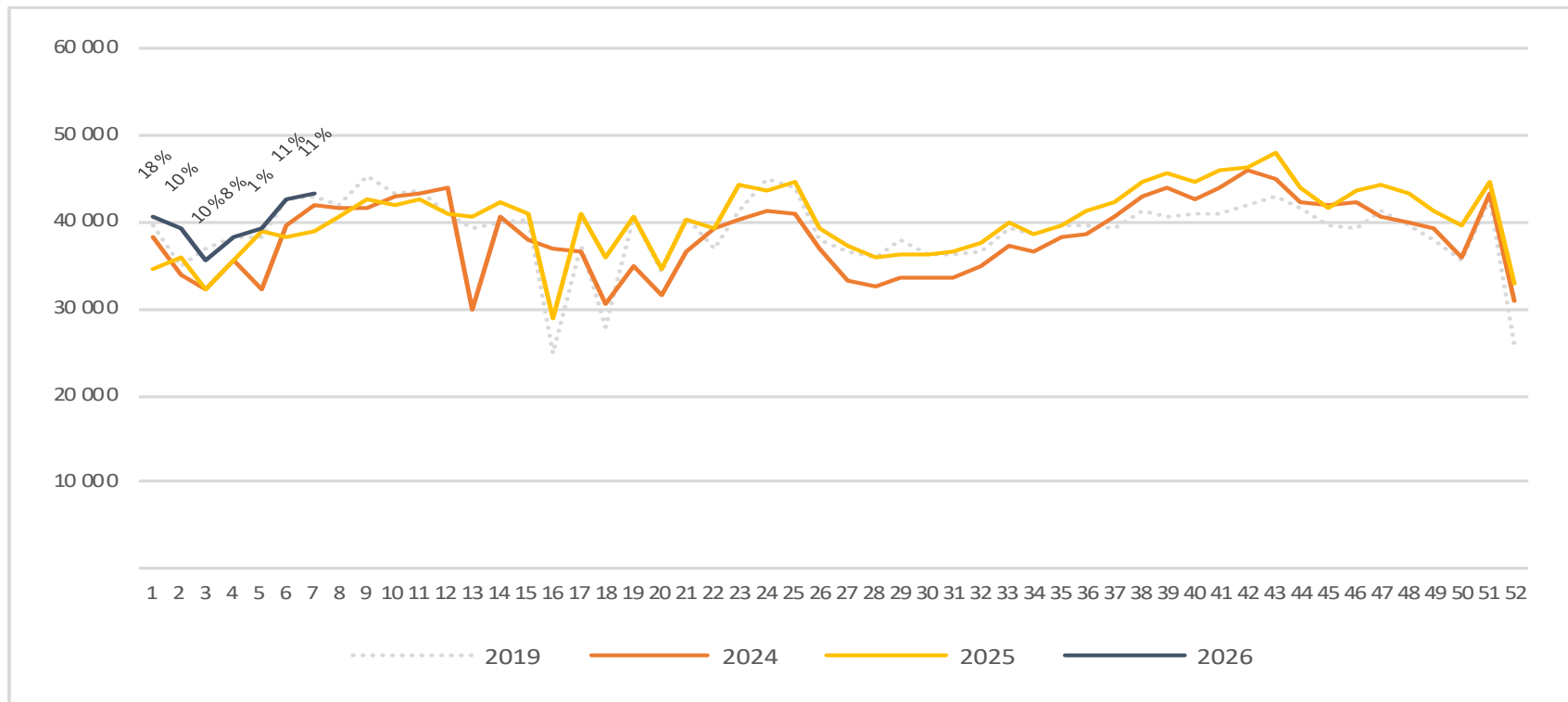
Passengers TOS international per week

The change is measured against the same week last year



Passengers TOS domestic per week

The change is measured against the same week last year



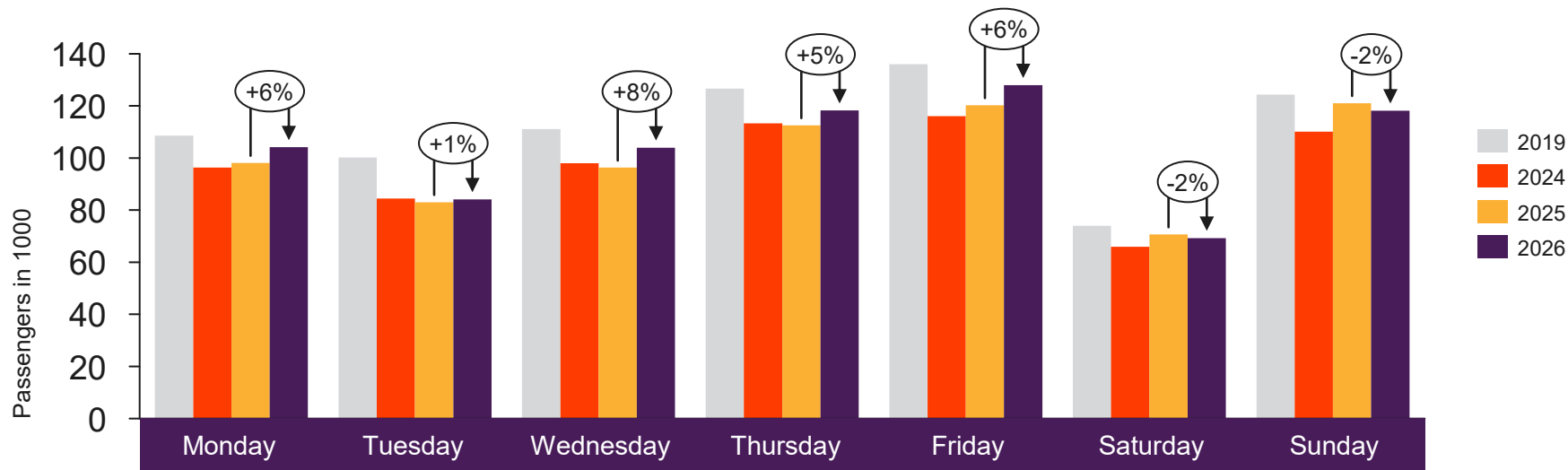


[Return to content page](#)

Top 4 airports

Total passenger numbers from Oslo, Bergen, Stavanger and Trondheim

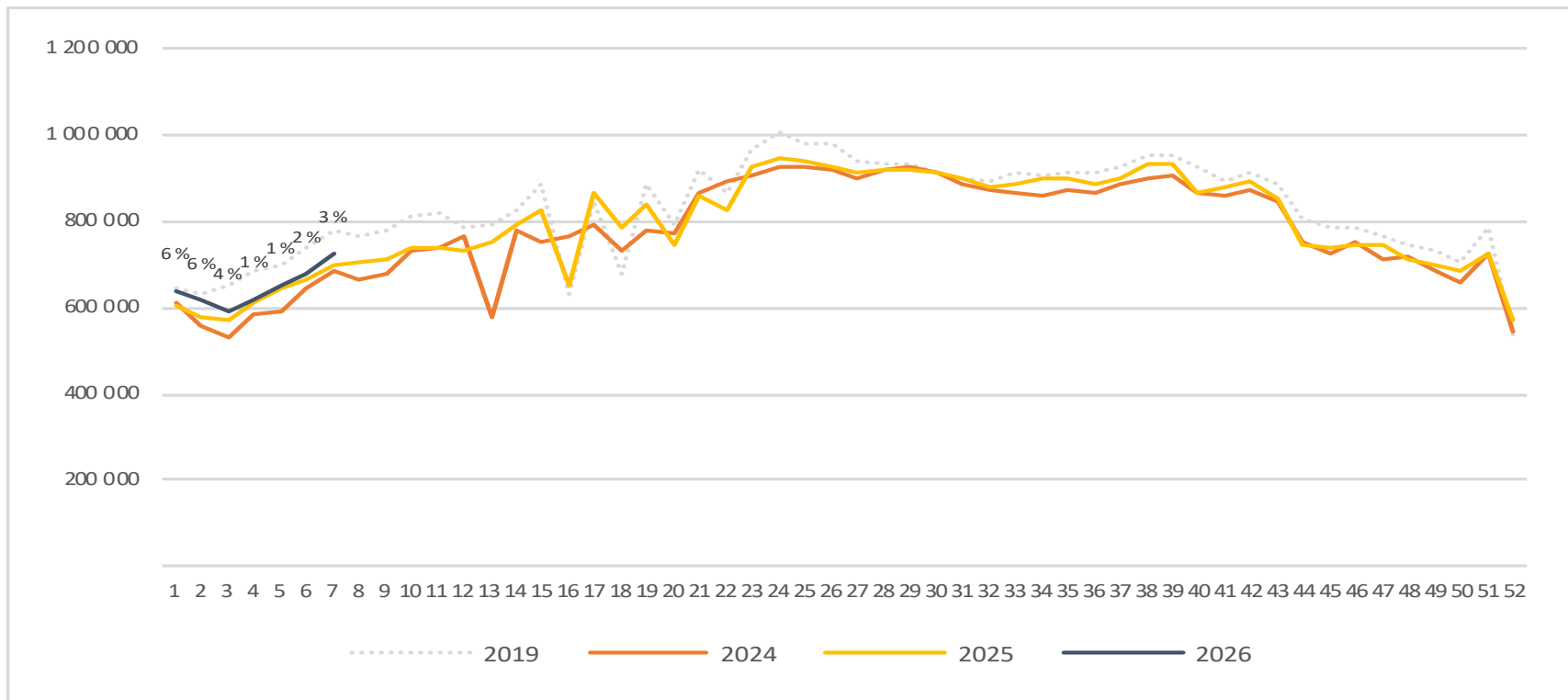
Passengers top 4 airports total per day week 7



	Monday	Tuesday	Wednesday	Thursday	Friday	Saturday	Sunday
2019	108 625	100 224	111 153	126 622	135 952	73 970	124 354
2024	96 385	84 496	97 950	113 319	116 053	65 947	110 091
2025	98 087	83 033	96 324	112 576	120 277	70 662	121 072
2026	104 118	84 146	103 919	118 252	128 007	69 283	118 142

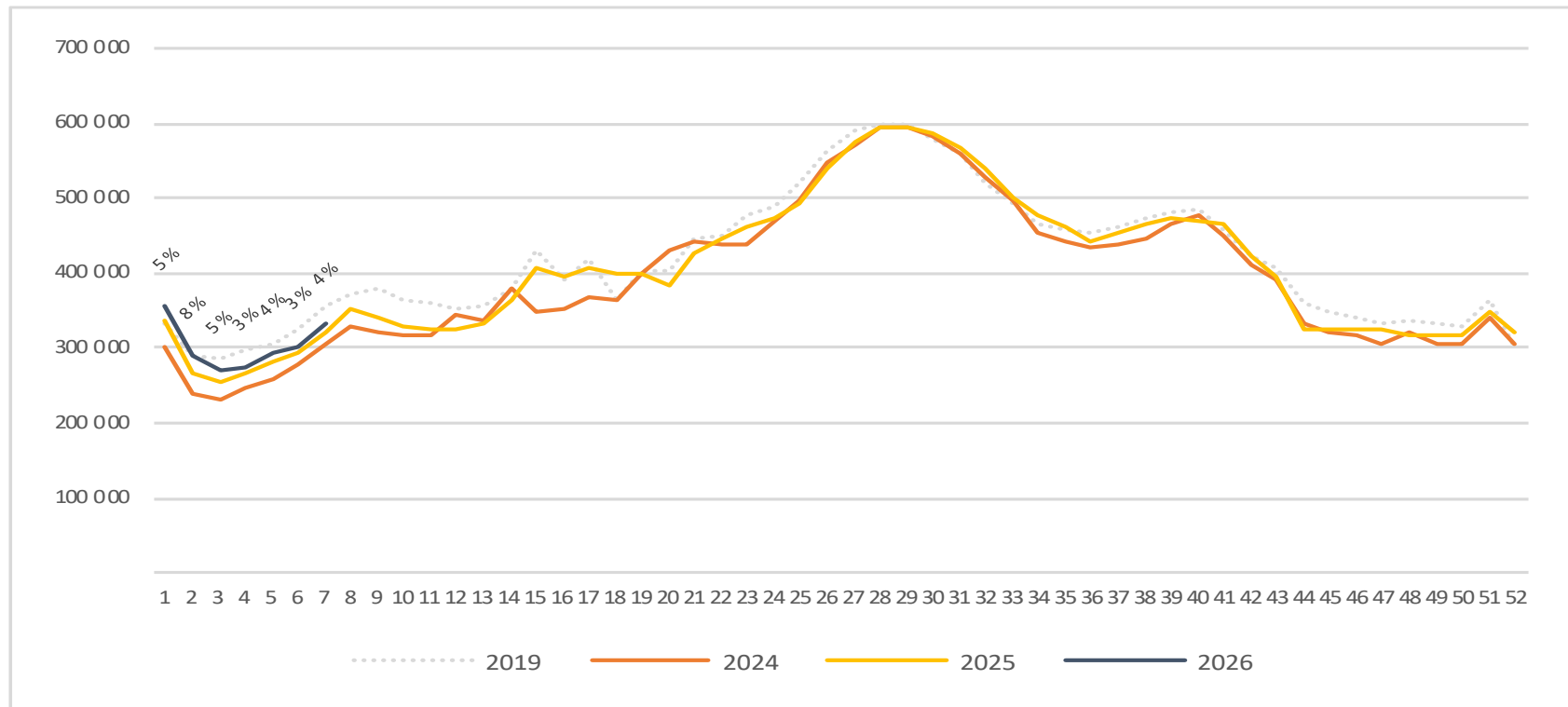
Passengers top 4 airports total per week

The change is measured against the same week last year



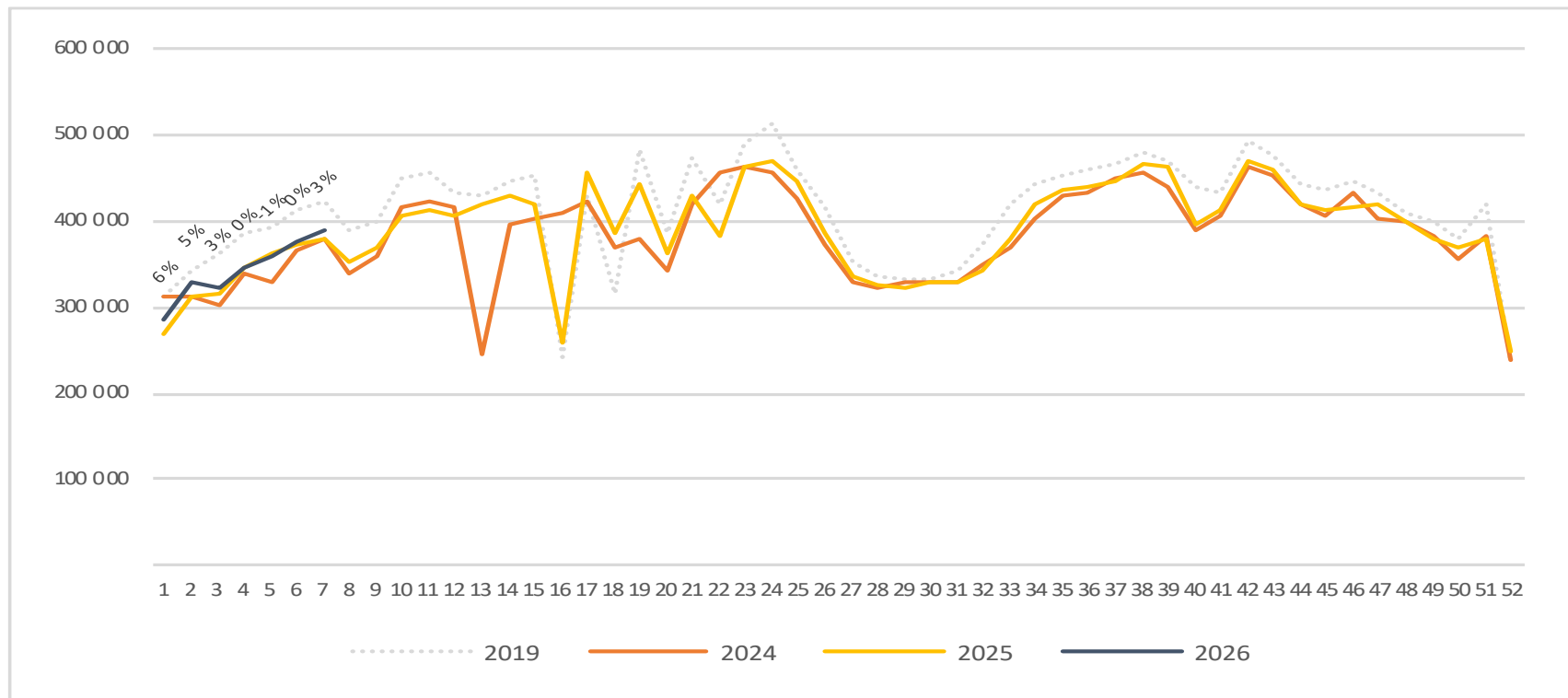
Passengers top 4 airports international per week

The change is measured against the same week last year



Passengers top 4 airports domestic per week

The change is measured against the same week last year



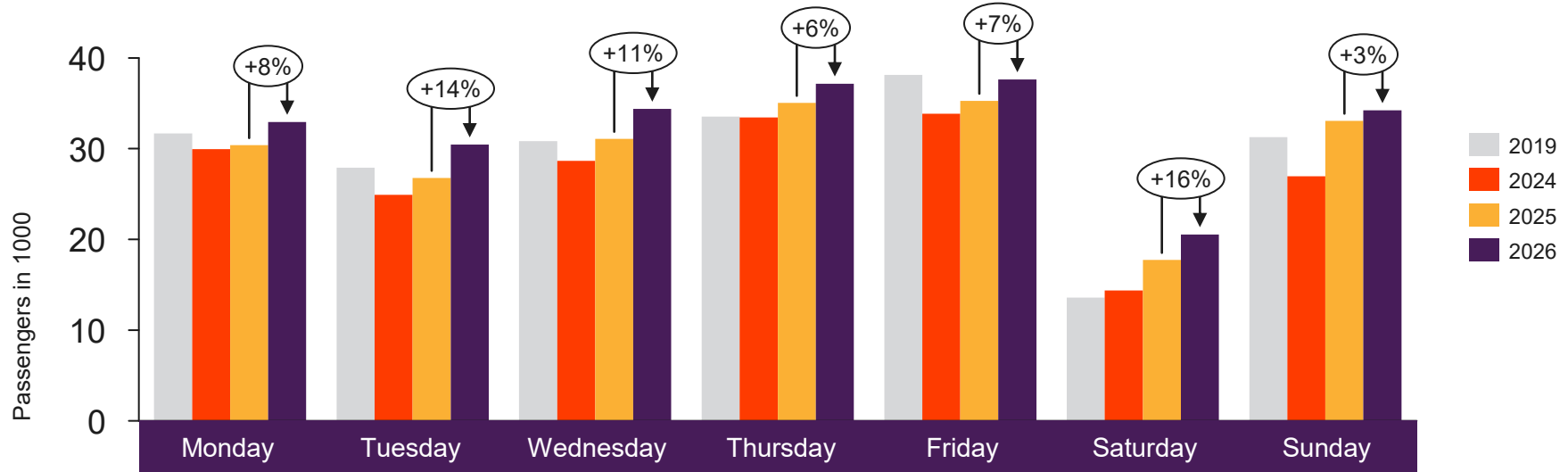


[Return to content page](#)

Regional and local airports

Total passenger numbers from Alta, Andenes, Bardufoss, Berlevåg, Bodø, Brønnøysund, Båtsfjord, Florø, Førde, Hammerfest, Harstad/Narvik, Hasvik, Honningsvåg, Kirkenes, Kristiansand, Kristiansund, Lakselv, Leknes, Mehamn, Mo i Rana, Molde, Mosjøen, Namsos, Røros, Rørvik, Røst, Sandane, Sandnessjøen, Sogndal, Stokmarknes, Svalbard, Svolvær, Sørkjosen, Tromsø, Vadsø, Vardø, Værøy, Ørsta-Volda and Ålesund

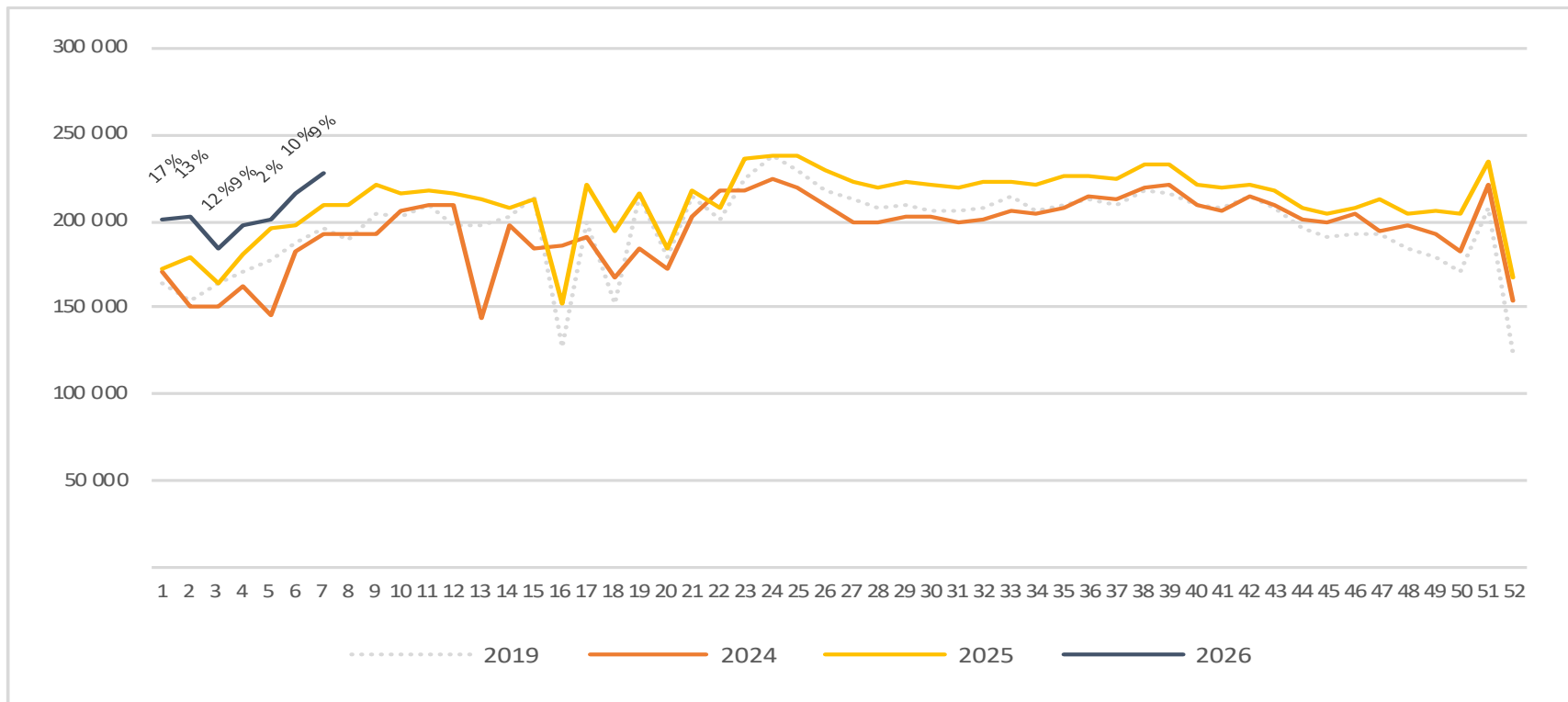
Passengers Regional and local airports total per day week 7



	Monday	Tuesday	Wednesday	Thursday	Friday	Saturday	Sunday
2019	31 697	27 920	30 825	33 539	38 141	13 587	31 286
2024	29 953	24 930	28 660	33 453	33 854	14 378	26 974
2025	30 403	26 771	31 073	35 056	35 264	17 742	33 076
2026	32 957	30 466	34 381	37 168	37 637	20 552	34 223

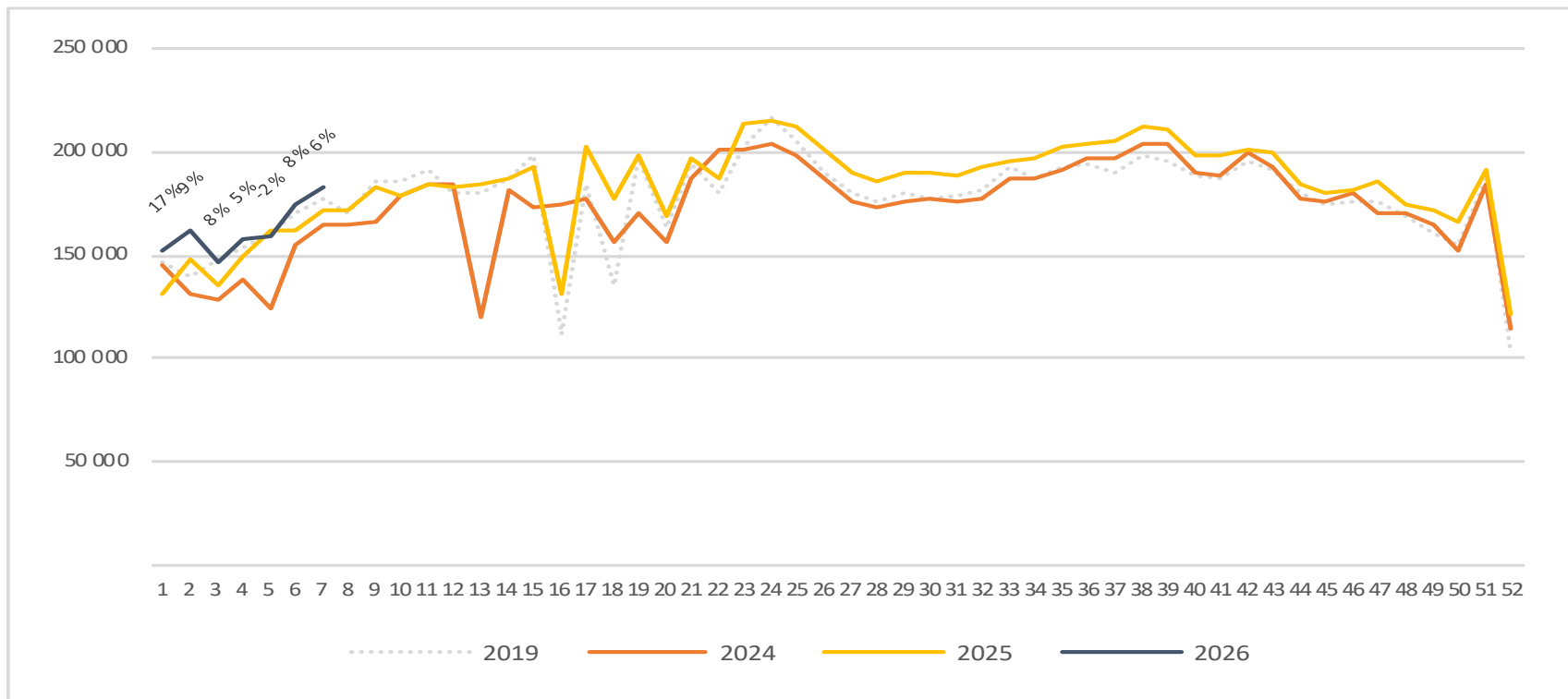
Passengers Regional and local airports total per week

The change is measured against the same week last year



Passengers Regional and local airports domestic per week

The change is measured against the same week last year



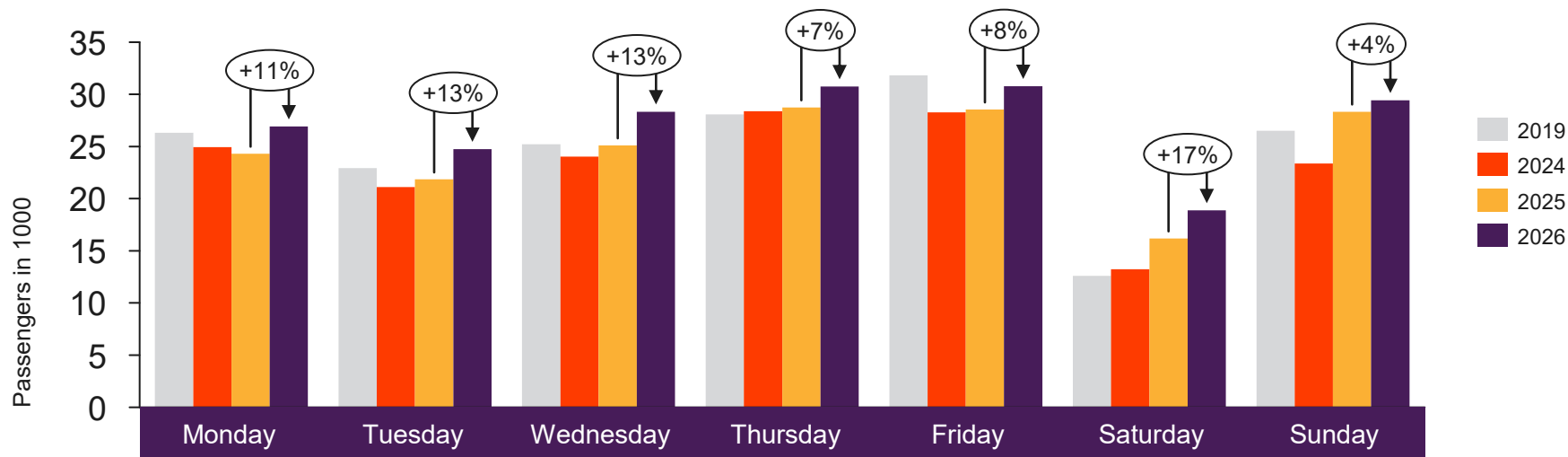


[Return to content
page](#)

Regional airports

Total passenger numbers from Alta, Bodø, Harstad/Narvik, Kirkenes, Kristiansand, Kristiansund, Molde, Svalbard, Tromsø and Ålesund

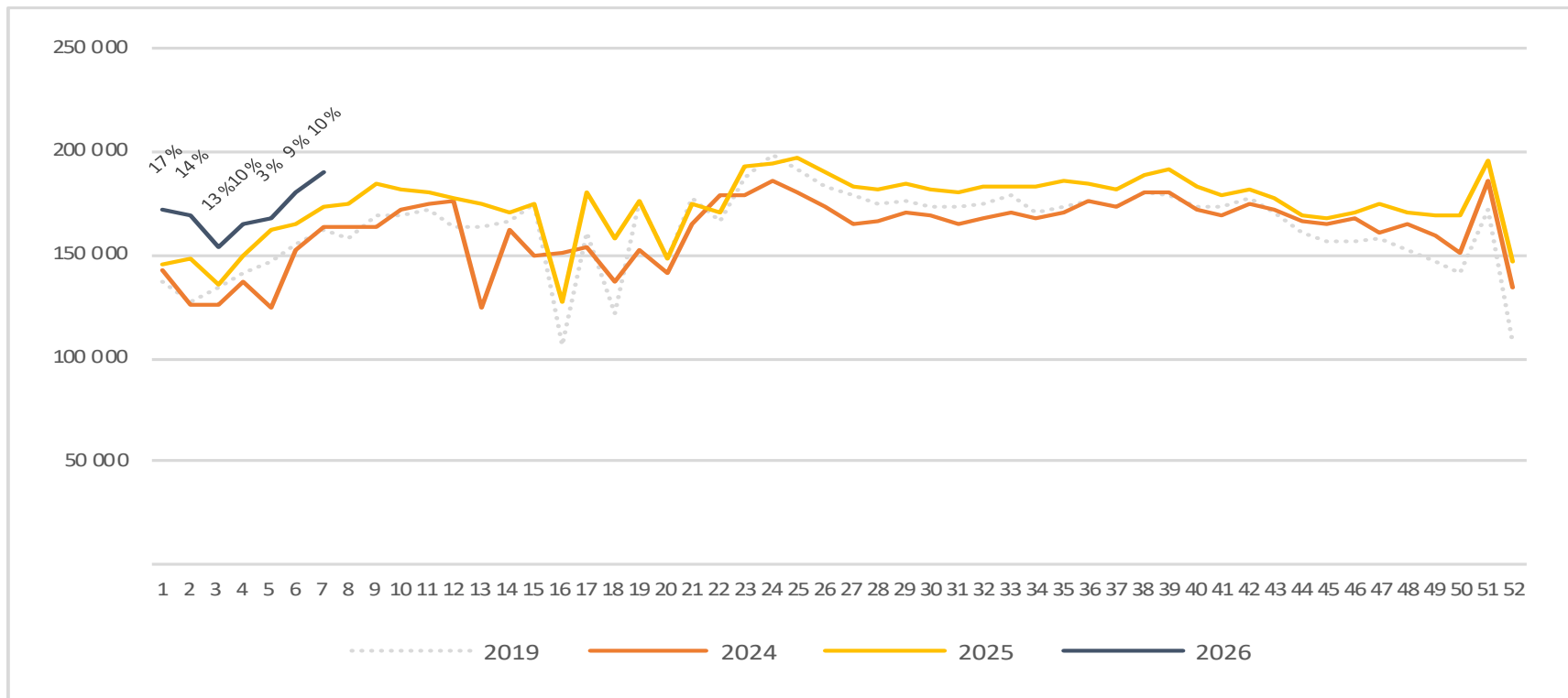
Passengers Regional airports total per day week 7



	Monday	Tuesday	Wednesday	Thursday	Friday	Saturday	Sunday
2019	26 315	22 925	25 224	28 092	31 834	12 607	26 501
2024	24 927	21 117	24 037	28 384	28 280	13 245	23 362
2025	24 309	21 844	25 109	28 733	28 548	16 188	28 336
2026	26 919	24 759	28 340	30 748	30 787	18 872	29 437

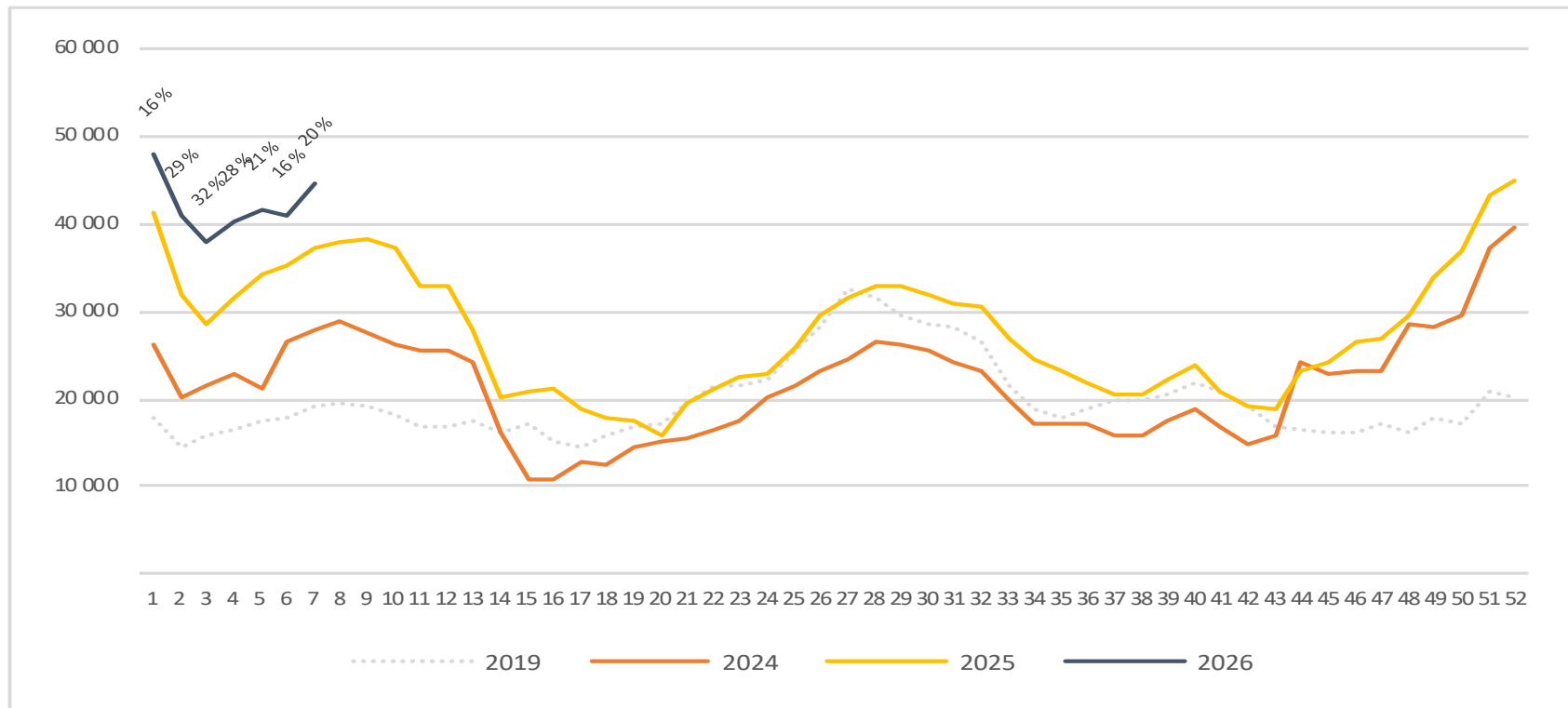
Passengers Regional airports total per week

The change is measured against the same week last year



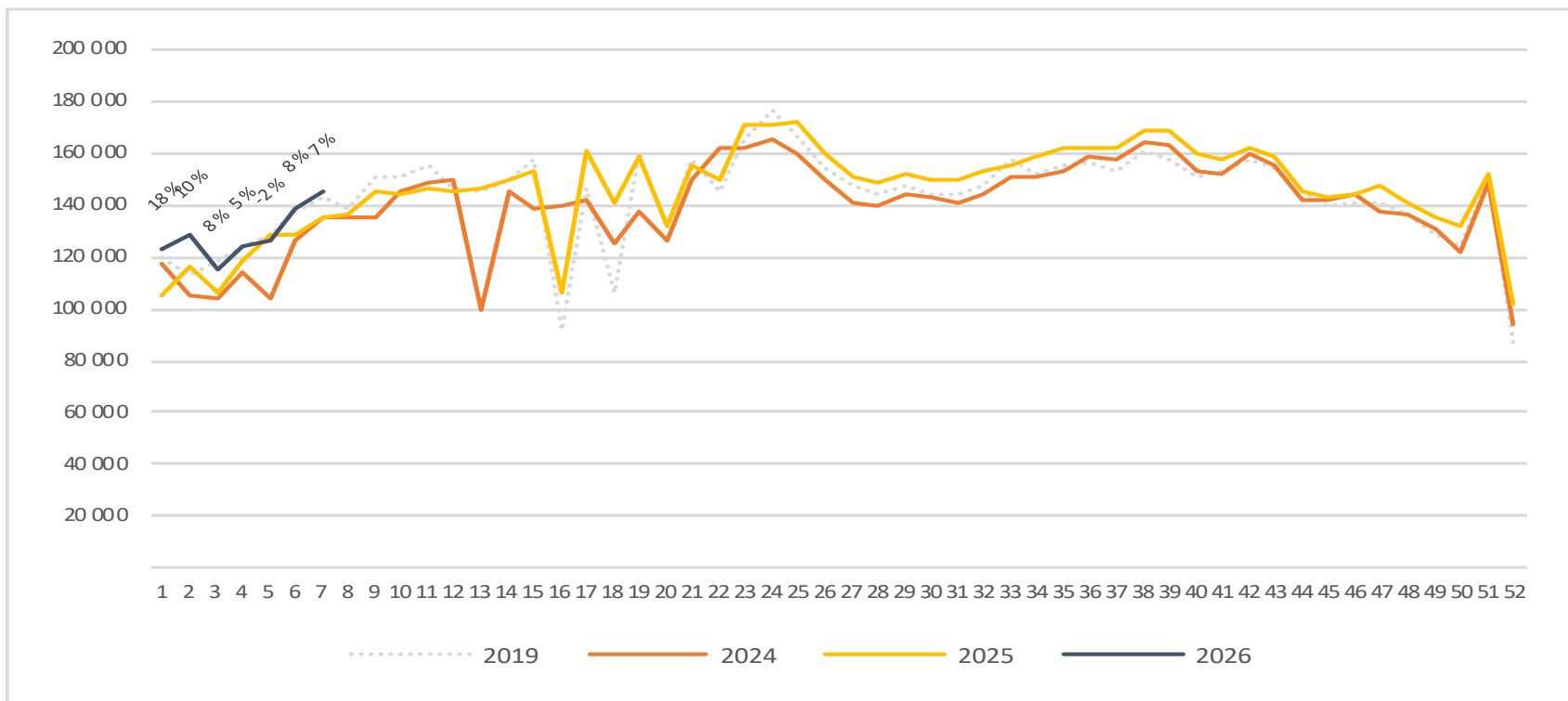
Passengers Regional airports international per week

The change is measured against the same week last year



Passengers Regional airports domestic per week

The change is measured against the same week last year



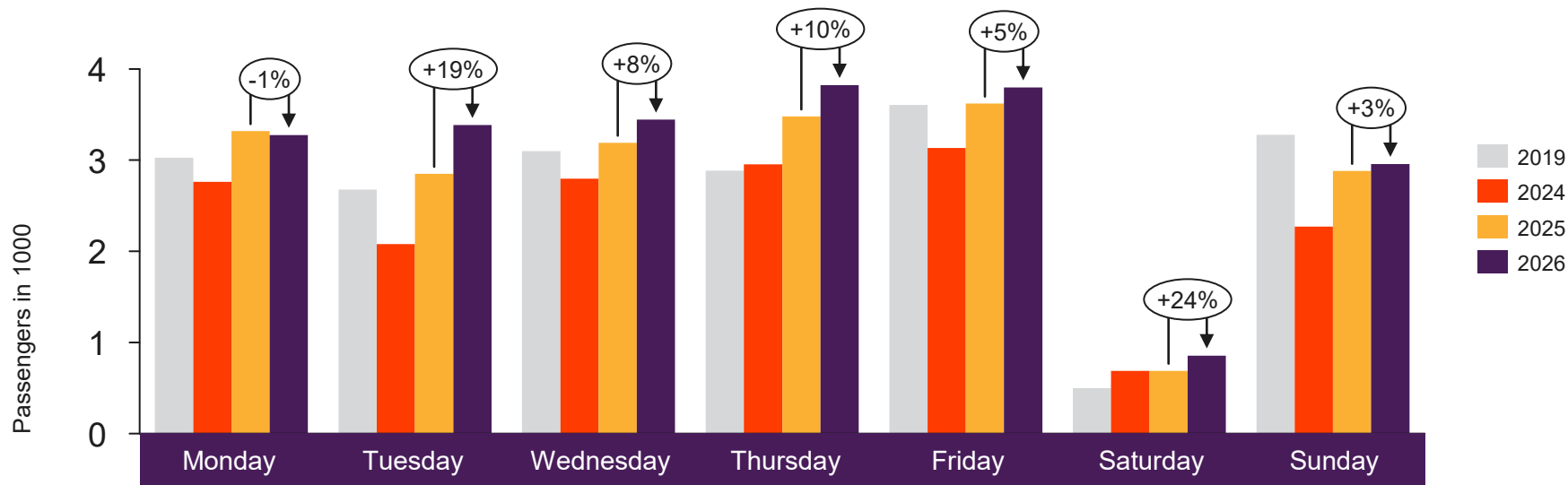


[Return to content
page](#)

Local Airports in Trøndelag and Nordland (Local Mid airports)

Total passenger numbers from Andenes, Bardufoss, Brønnøysund, Leknes, Mo i Rana, Mosjøen, Namsos, Rørvik, Røst, Sandnessjøen, Stokmarknes, Svolvær and Værøy

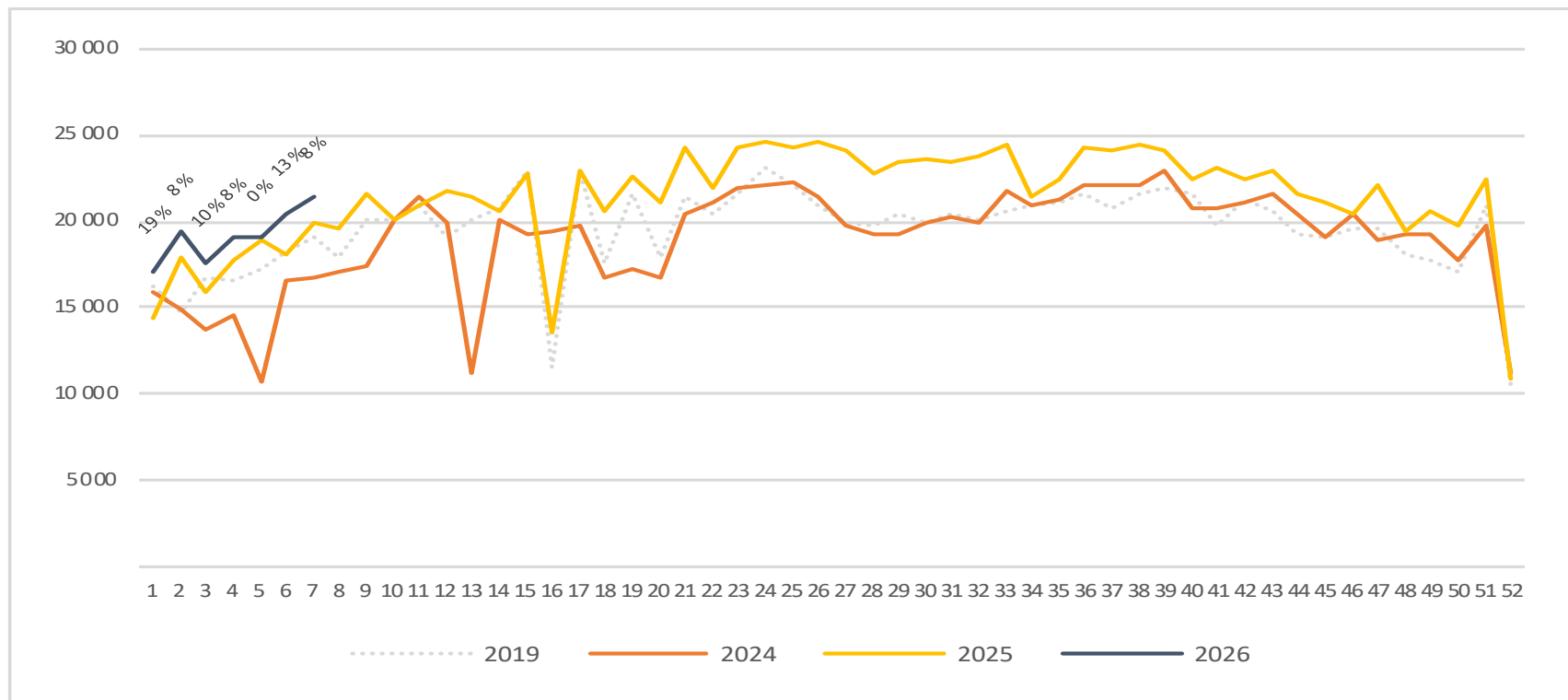
Passengers Local Mid airports total per day week 7



	Monday	Tuesday	Wednesday	Thursday	Friday	Saturday	Sunday
2019	3 026	2 677	3 098	2 886	3 606	499	3 280
2024	2 761	2 078	2 798	2 954	3 134	687	2 270
2025	3 319	2 850	3 189	3 479	3 620	688	2 882
2026	3 276	3 384	3 444	3 824	3 798	855	2 956

Passengers Local Mid airports total per week

The change is measured against the same week last year



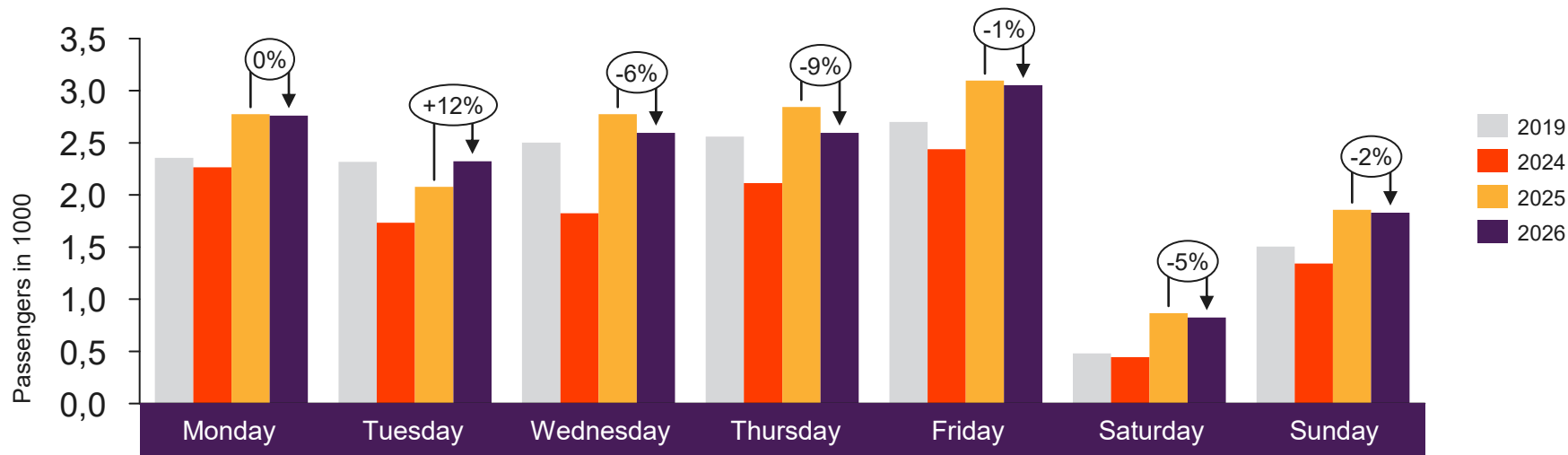


[Return to content
page](#)

Local airports on the West coast and in Troms and Finnmark

Total passenger numbers from Berlevåg, Båtsfjord, Florø, Førde, Hammerfest, Hasvik, Honningsvåg, Lakselv, Mehamn, Røros, Sandane, Sogndal, Sørkjosen, Vadsø, Vardø and Ørsta-Volda

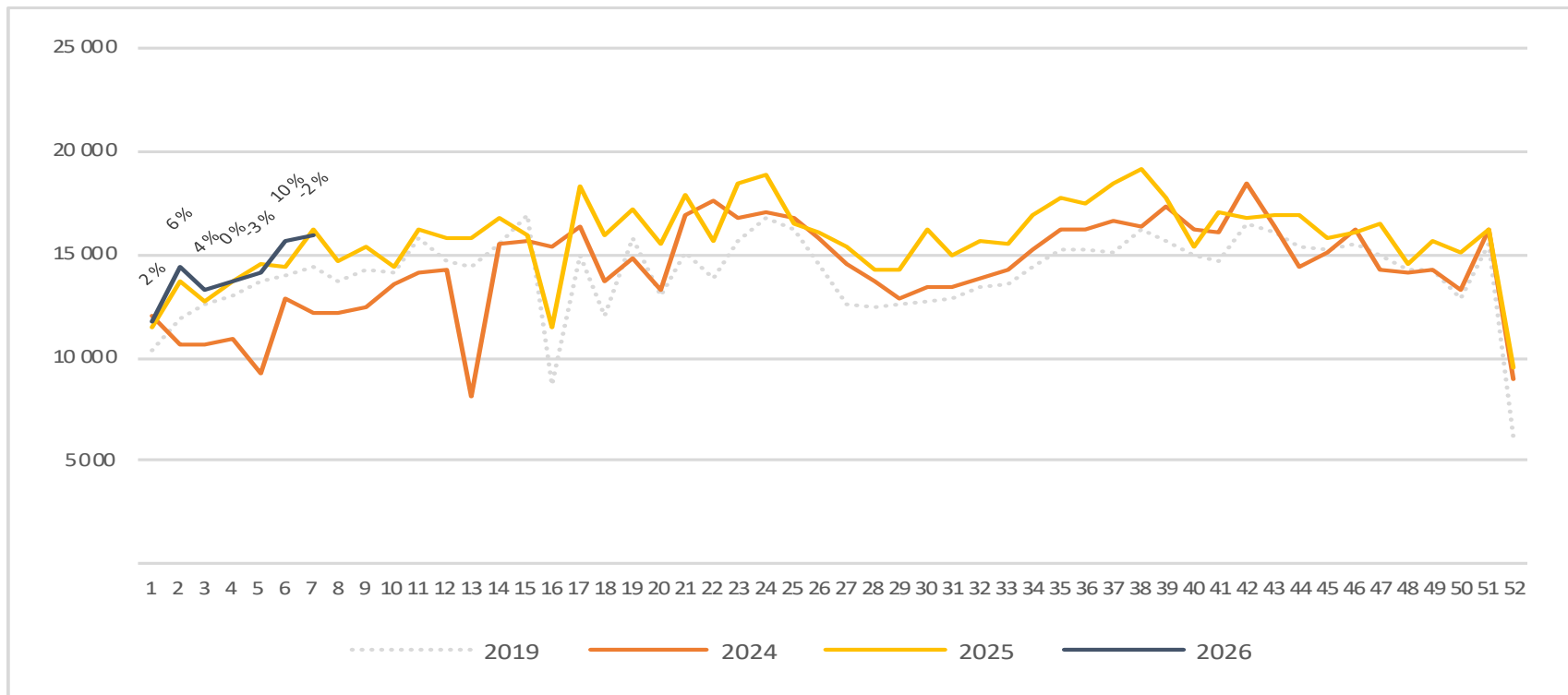
Passengers local airports on the West coast and in Troms and Finnmark total per day week 7



	Monday	Tuesday	Wednesday	Thursday	Friday	Saturday	Sunday
2019	2 356	2 318	2 503	2 561	2 701	481	1 505
2024	2 265	1 735	1 825	2 115	2 440	446	1 342
2025	2 775	2 077	2 775	2 844	3 096	866	1 858
2026	2 762	2 323	2 597	2 596	3 052	825	1 830

Passengers local airports on the West coast and in Troms and Finnmark total per week

The change is measured against the same week last year



Passengers local airports on the West coast and in Troms and Finnmark domestic per week

The change is measured against the same week last year

