



Passenger numbers per week

## Preliminary figures

- The figures for the previous week are preliminary. It takes some time for all passenger numbers to be reported, so the figures for the previous week may be lower than the final figures.
- The figures are from SIA, Avinor's traffic database.

# Content

- Top 10 airports
- Avinor total
- Selected airports
- The 4 biggest airports
- Regional and local airports
  - Regional airports
  - Local airports in Trøndelag and Nordland
  - Local airports on the west coast of Norway and in Troms and Finnmark

## Top 10 airports, total, week 6

Airport	2019	2024	2025	2026	2026 vs. 2025	
					Change	Change %
Oslo	484 057	408 762	431 218	439 379	8 161	2 %
Bergen	104 305	102 973	102 490	105 101	2 611	3 %
Tromsø	50 152	56 789	65 344	73 828	8 484	13 %
Trondheim	79 641	72 122	70 206	70 960	754	1 %
Stavanger	71 272	62 762	63 837	62 350	-1 487	-2 %
Bodø	29 233	29 352	30 244	32 958	2 714	9 %
Ålesund	19 046	16 589	16 077	17 074	997	6 %
Harstad/Narvik	12 337	13 424	13 517	15 199	1 682	12 %
Kristiansand	18 776	13 149	12 802	14 302	1 500	12 %
Alta	6 621	5 487	6 770	6 754	-16	0 %

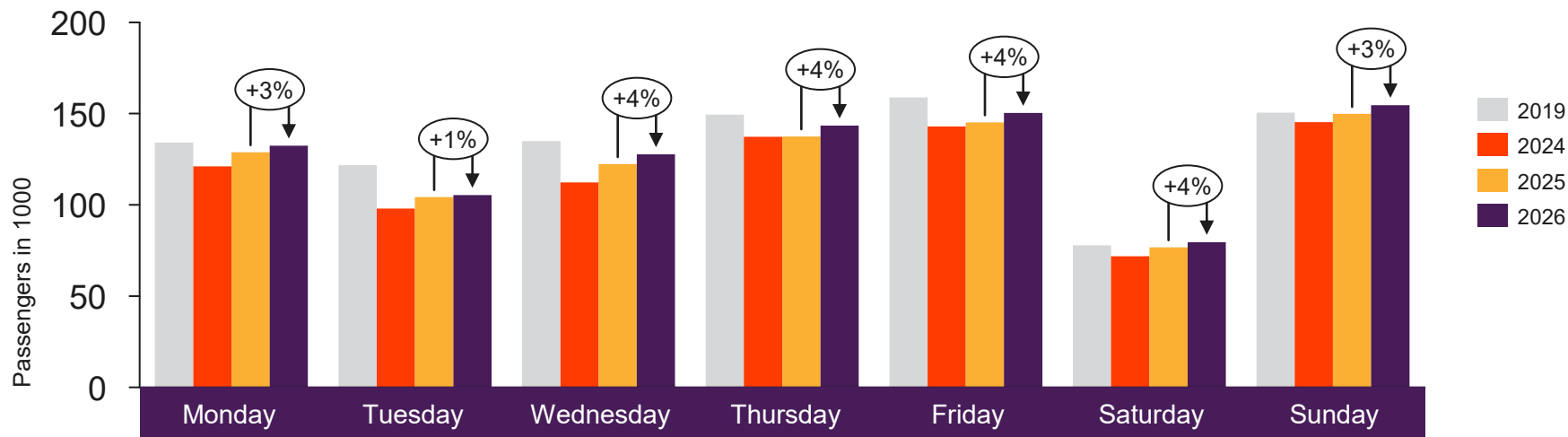


[Return to content  
page](#)

# Avinor total

Passenger numbers for all Avinor airports

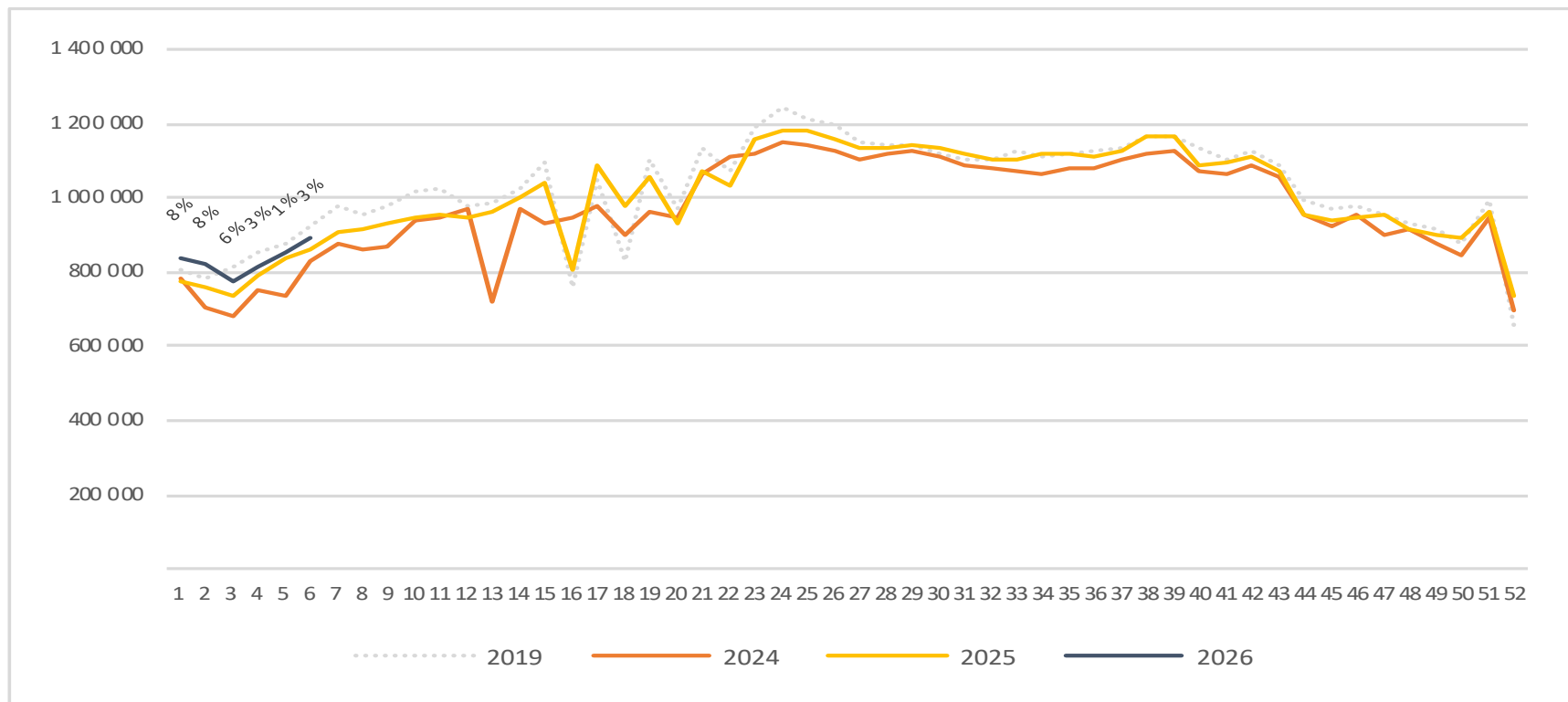
# Passengers Avinor total per day week 6



	Monday	Tuesday	Wednesday	Thursday	Friday	Saturday	Sunday
2019	134 104	121 726	134 912	149 475	158 832	77 806	150 574
2024	121 056	97 907	112 330	137 403	143 042	71 801	145 334
2025	128 843	104 238	122 328	137 504	145 171	76 767	149 896
2026	132 504	105 423	127 712	143 462	150 394	79 619	154 673

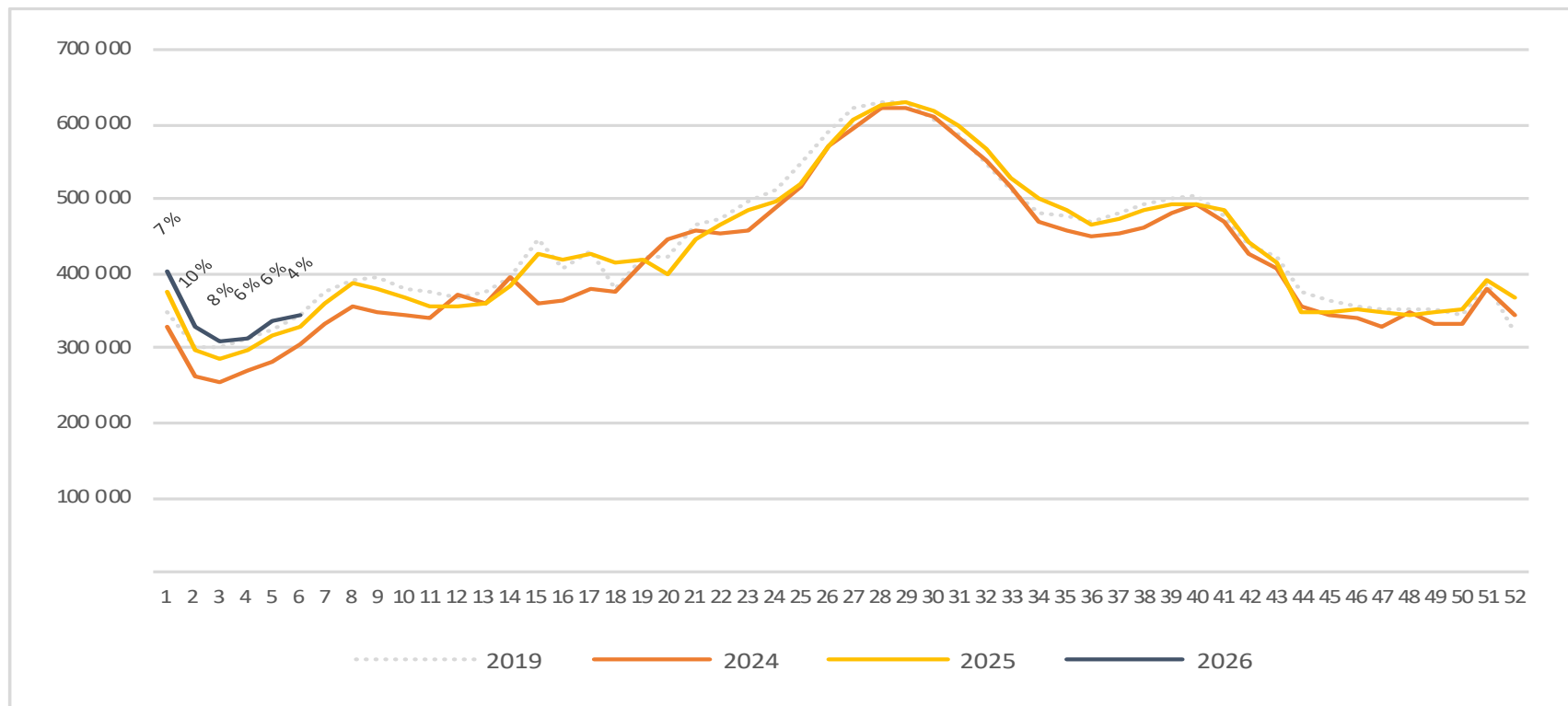
# Passengers Avinor total per week

The change is measured against the same week last year



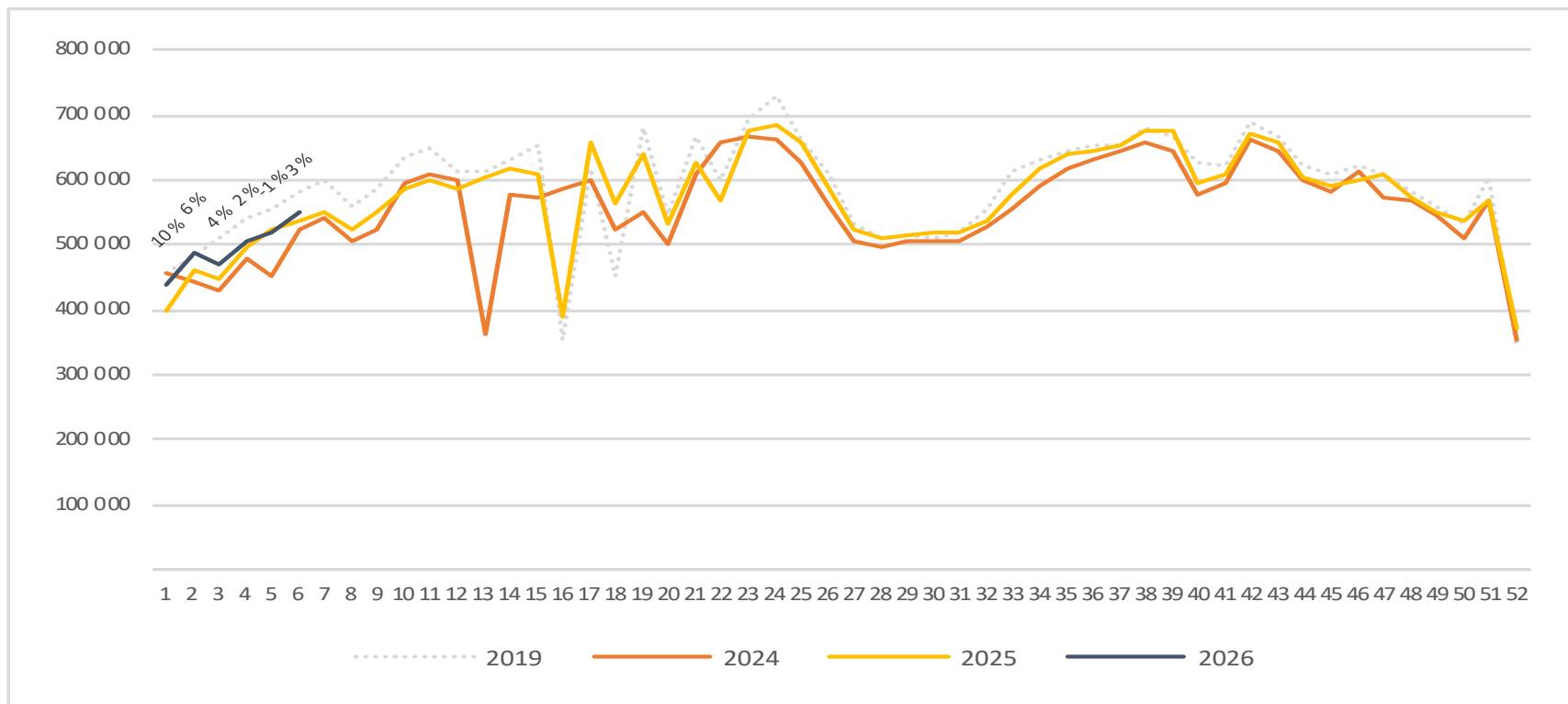
# Passengers Avinor international per week

The change is measured against the same week last year



# Passengers Avinor domestic per week

The change is measured against the same week last year

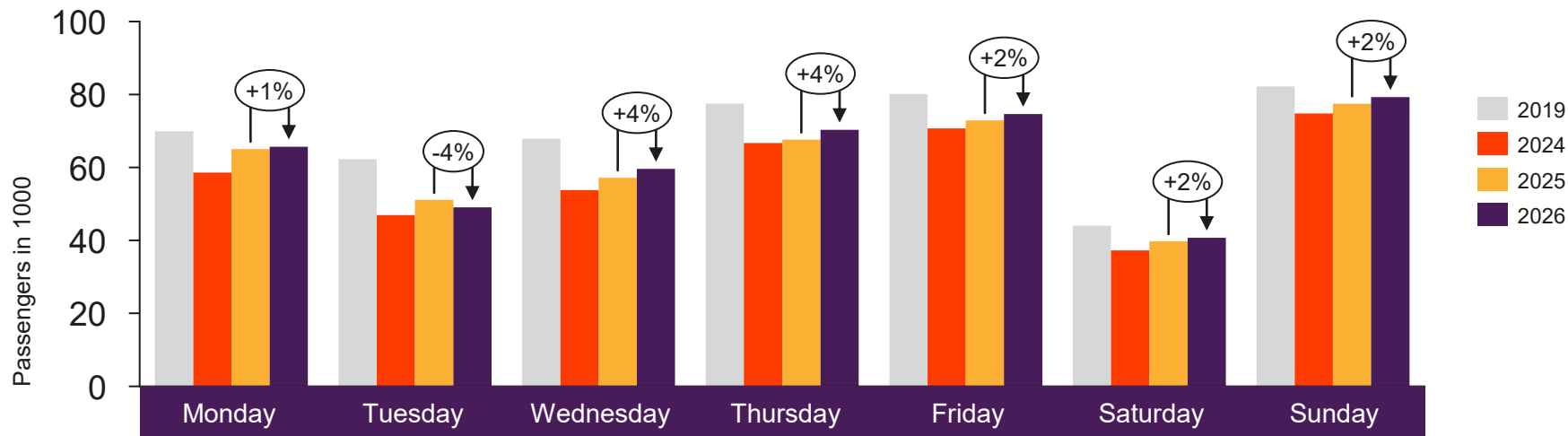




[Return to content page](#)

# Selected airports

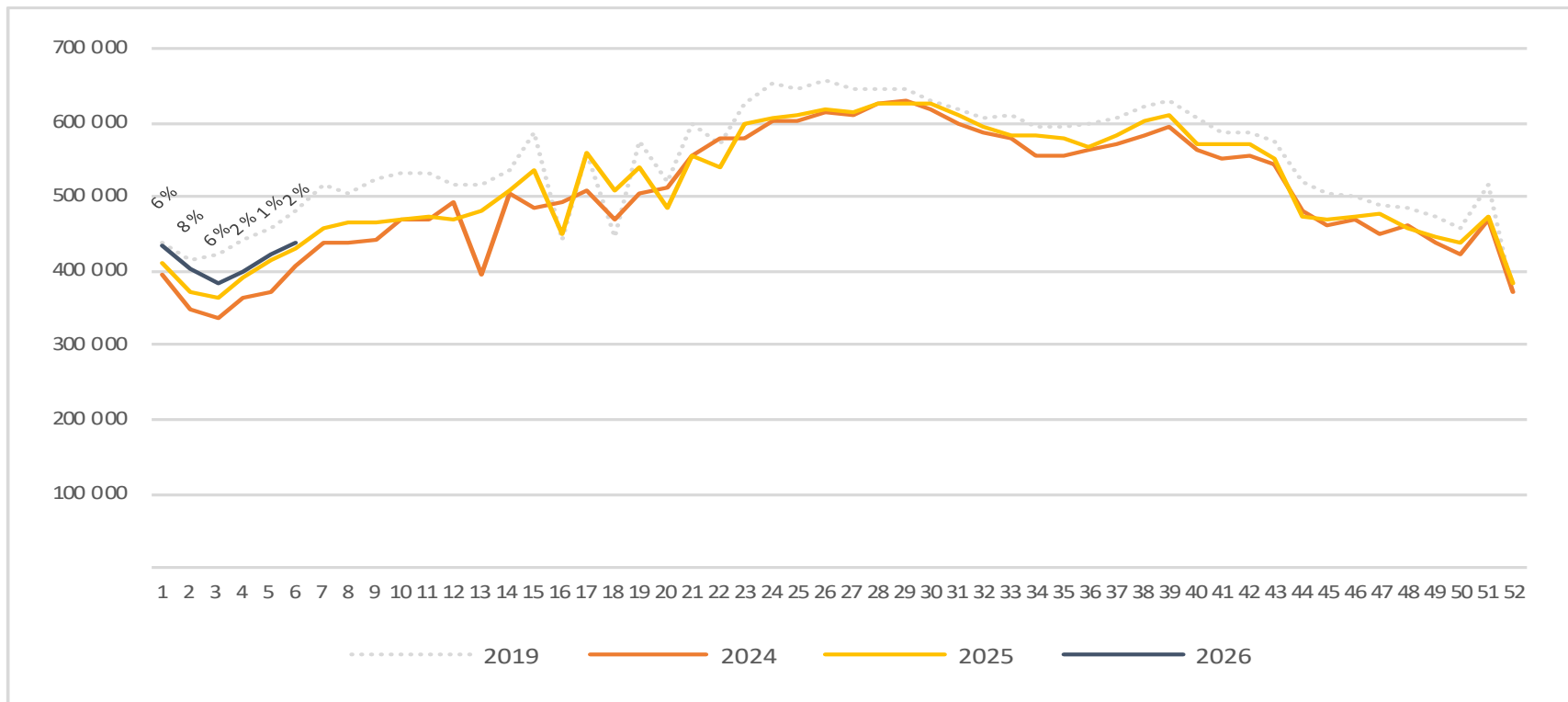
# Passengers OSL total per day week 6



	Monday	Tuesday	Wednesday	Thursday	Friday	Saturday	Sunday
2019	69 924	62 312	67 900	77 498	80 155	44 043	82 225
2024	58 627	46 912	53 763	66 710	70 716	37 262	74 772
2025	65 049	51 091	57 198	67 645	72 933	39 791	77 511
2026	65 710	49 041	59 595	70 327	74 679	40 734	79 293

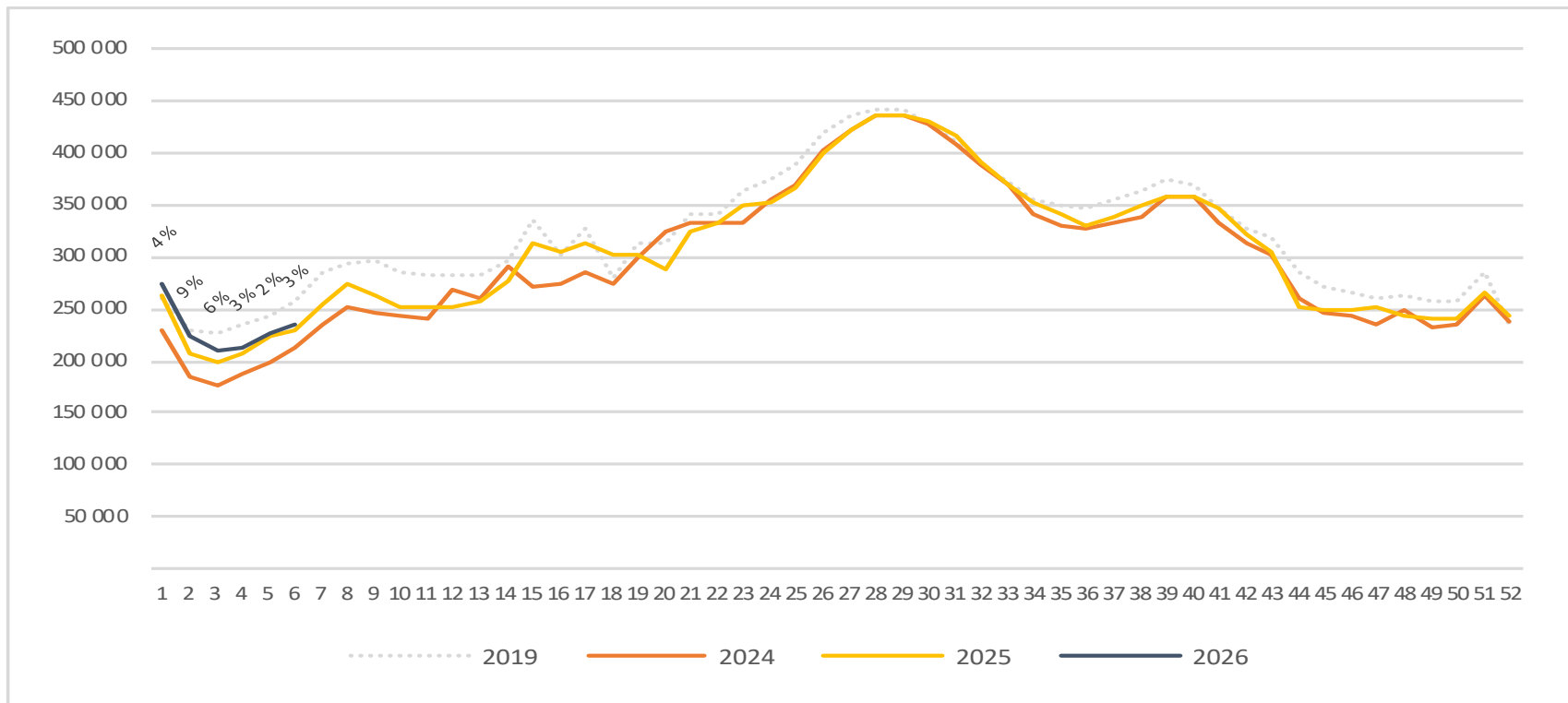
# Passengers OSL total per week

The change is measured against the same week last year



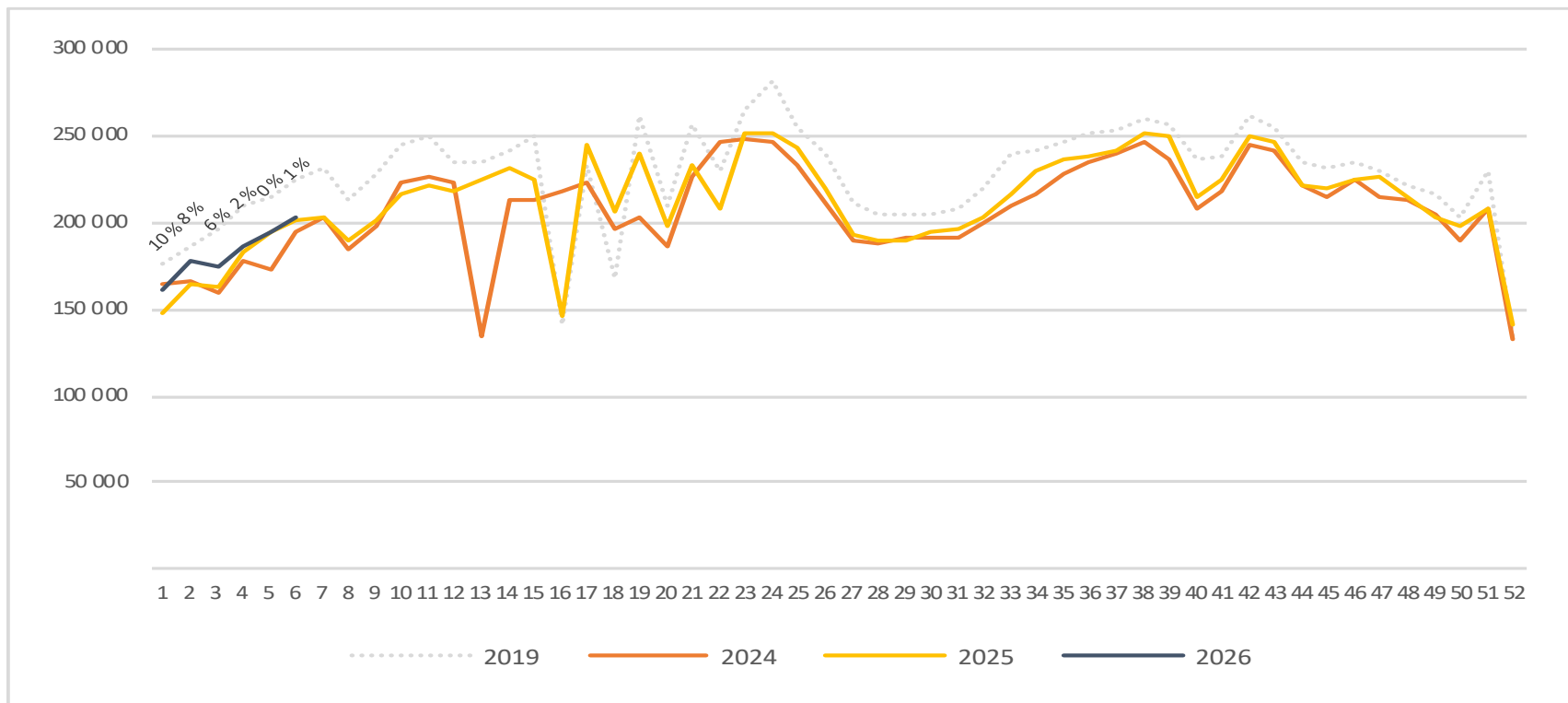
# Passengers OSL international per week

The change is measured against the same week last year

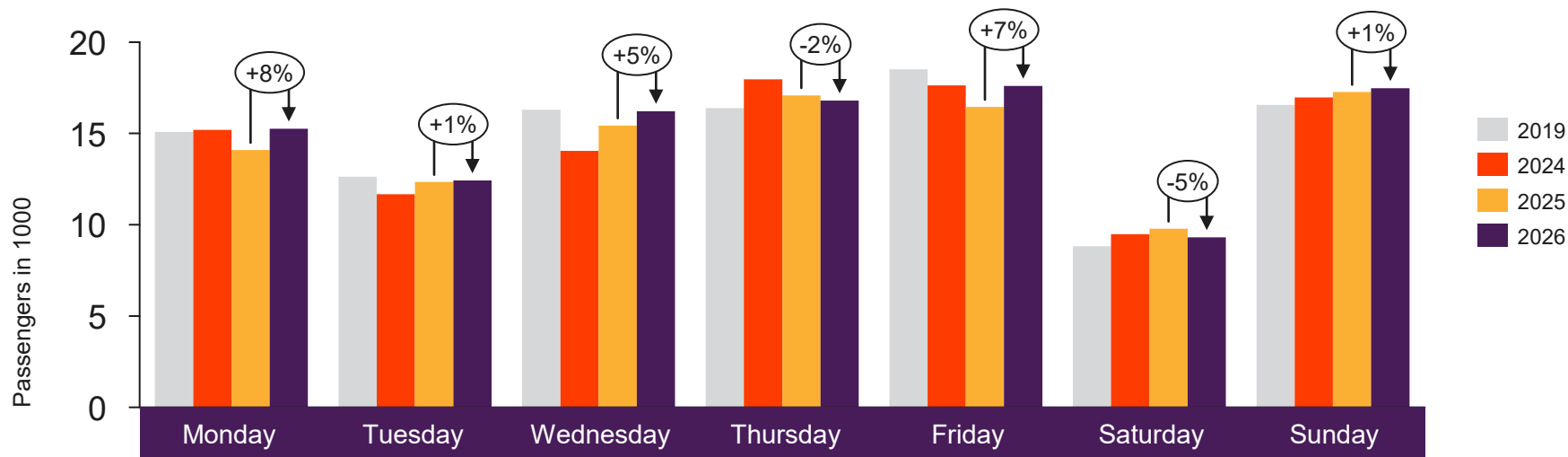


# Passengers OSL domestic per week

The change is measured against the same week last year



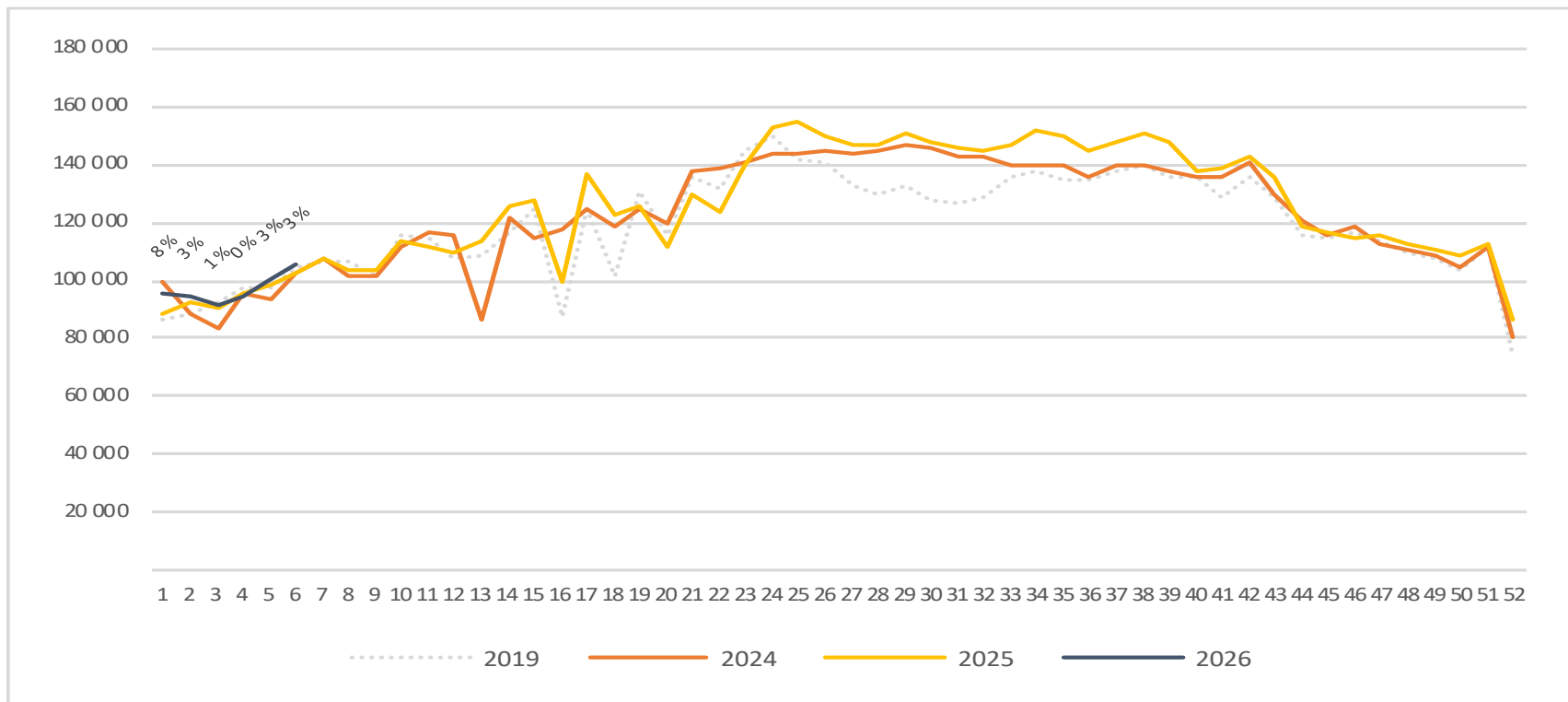
# Passengers BGO total per day week 6



	Monday	Tuesday	Wednesday	Thursday	Friday	Saturday	Sunday
2019	15 089	12 633	16 293	16 389	18 522	8 821	16 558
2024	15 191	11 678	14 048	17 962	17 639	9 478	16 977
2025	14 100	12 344	15 435	17 092	16 459	9 779	17 281
2026	15 255	12 421	16 225	16 809	17 608	9 309	17 474

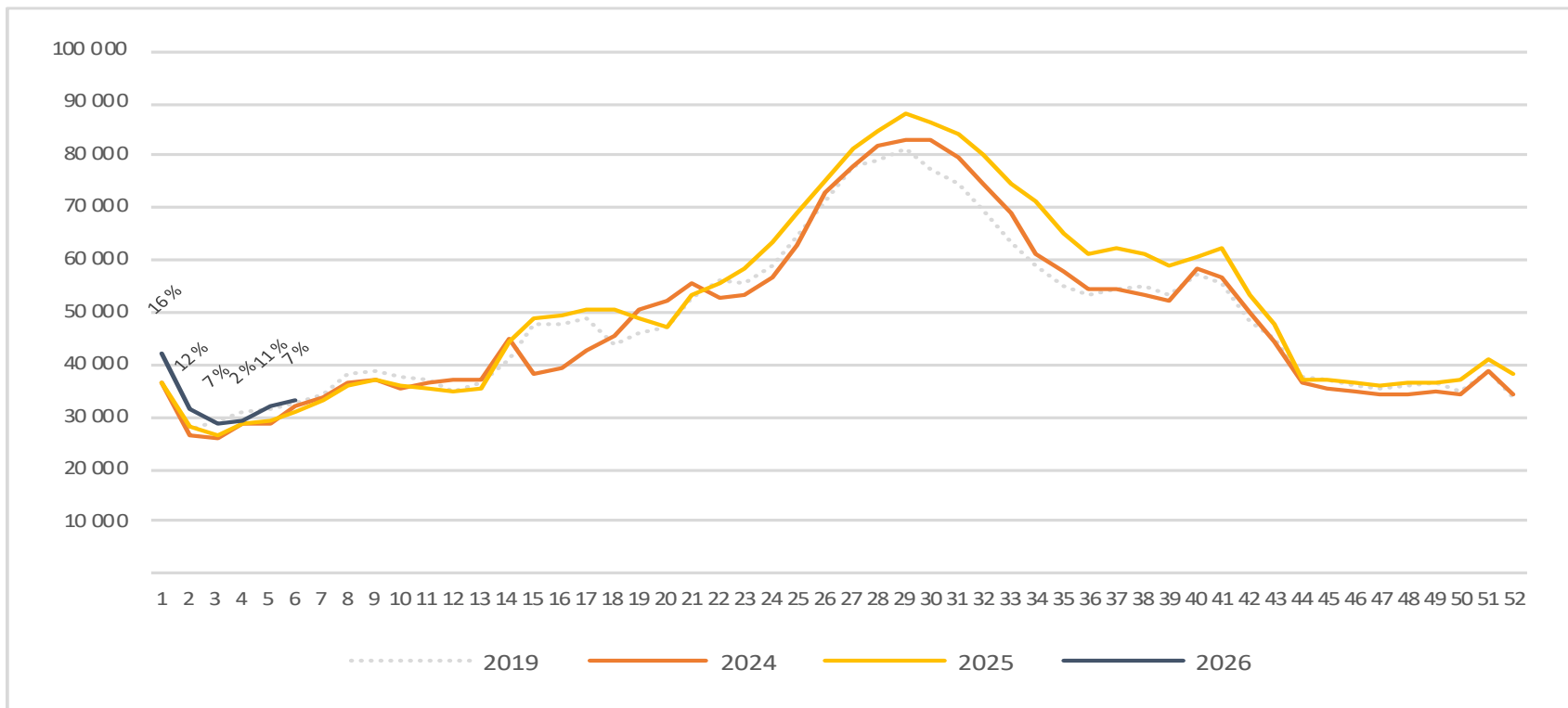
# Passengers BGO total per week

The change is measured against the same week last year



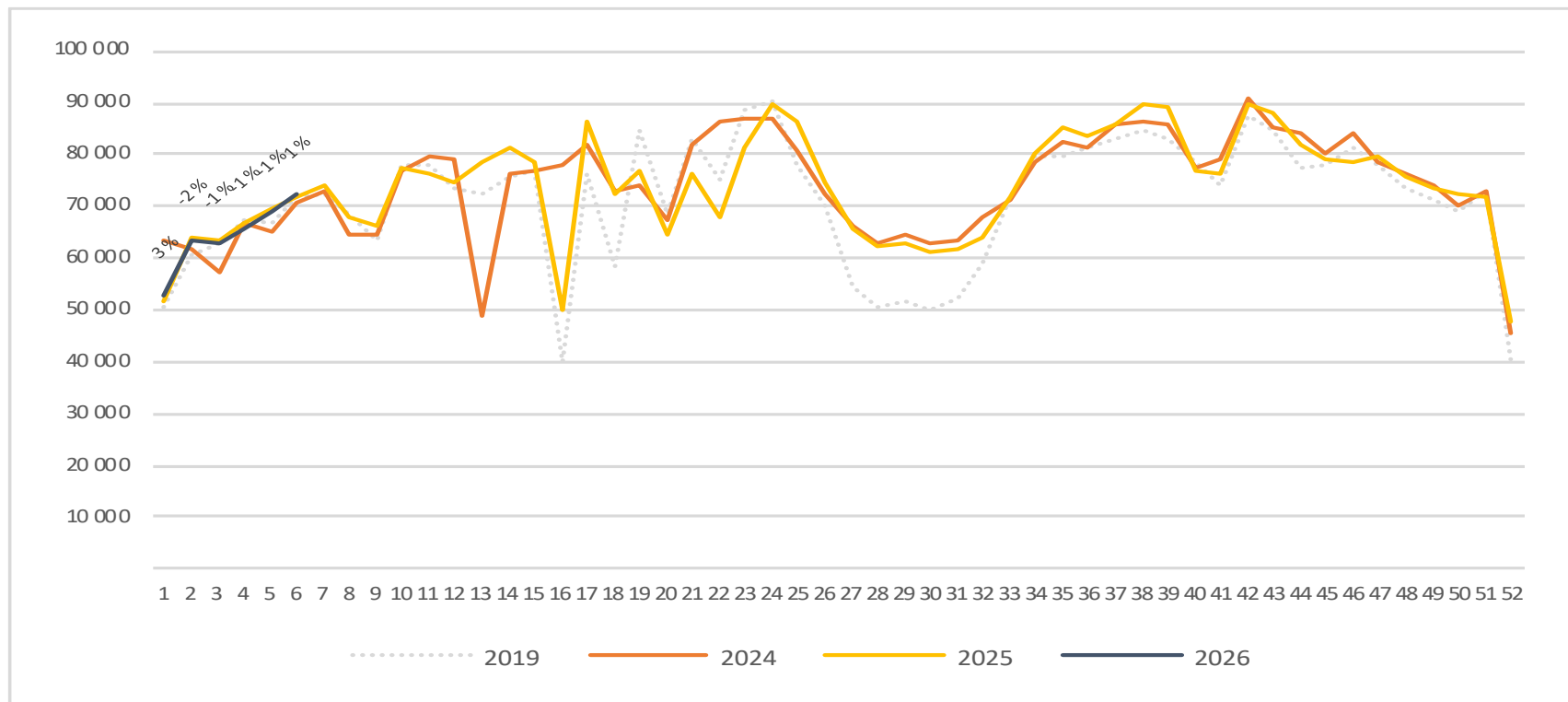
# Passengers BGO international per week

The change is measured against the same week last year

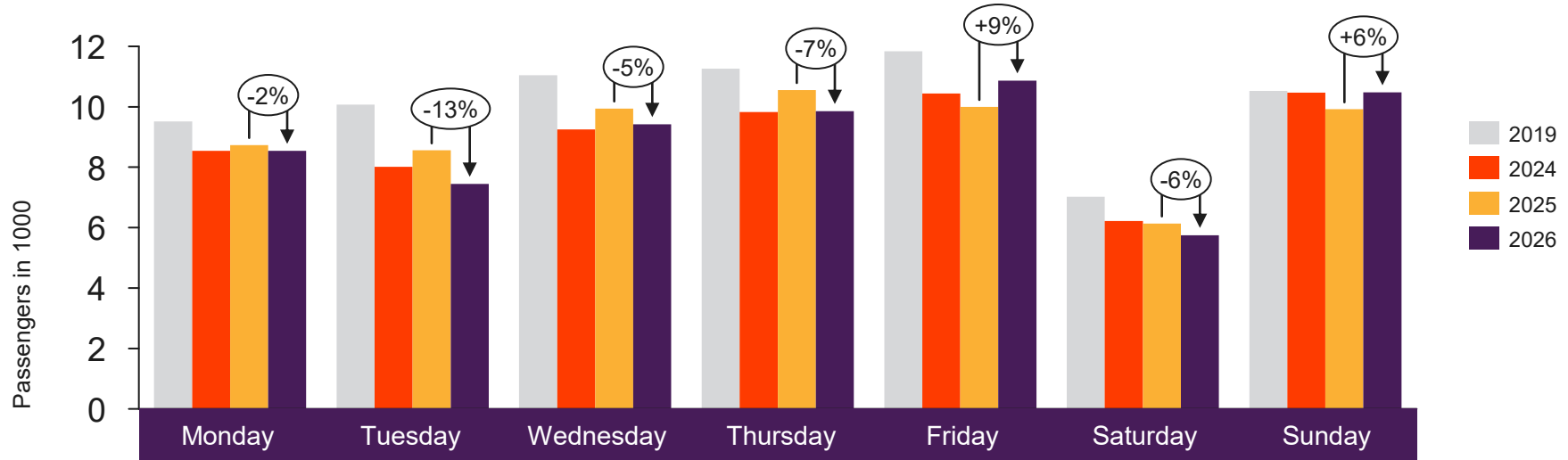


# Passengers BGO domestic per week

The change is measured against the same week last year



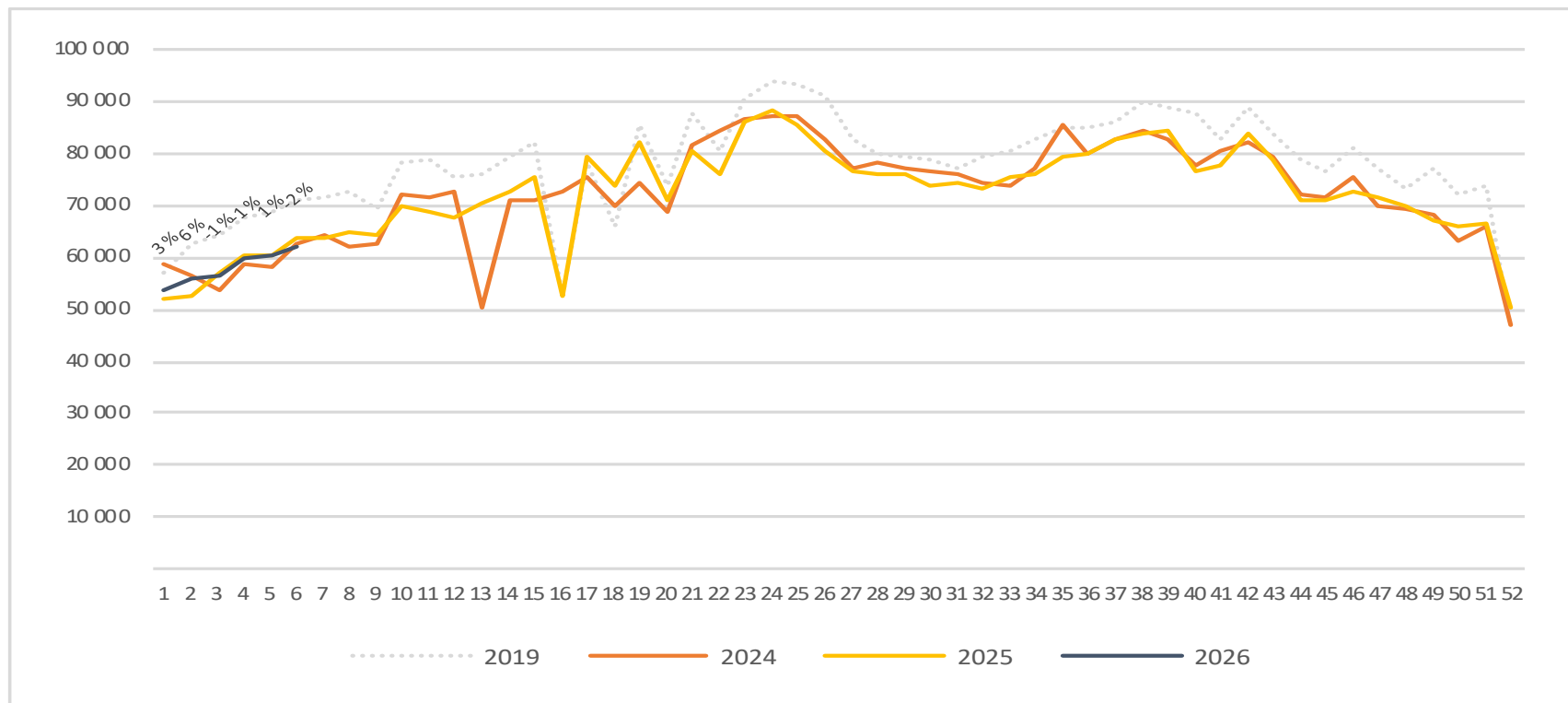
# Passengers SVG total per day week 6



2019	9 513	10 071	11 043	11 260	11 841	7 019	10 525
2024	8 543	8 017	9 249	9 823	10 441	6 222	10 467
2025	8 733	8 559	9 942	10 551	9 998	6 136	9 918
2026	8 537	7 445	9 420	9 853	10 866	5 751	10 478

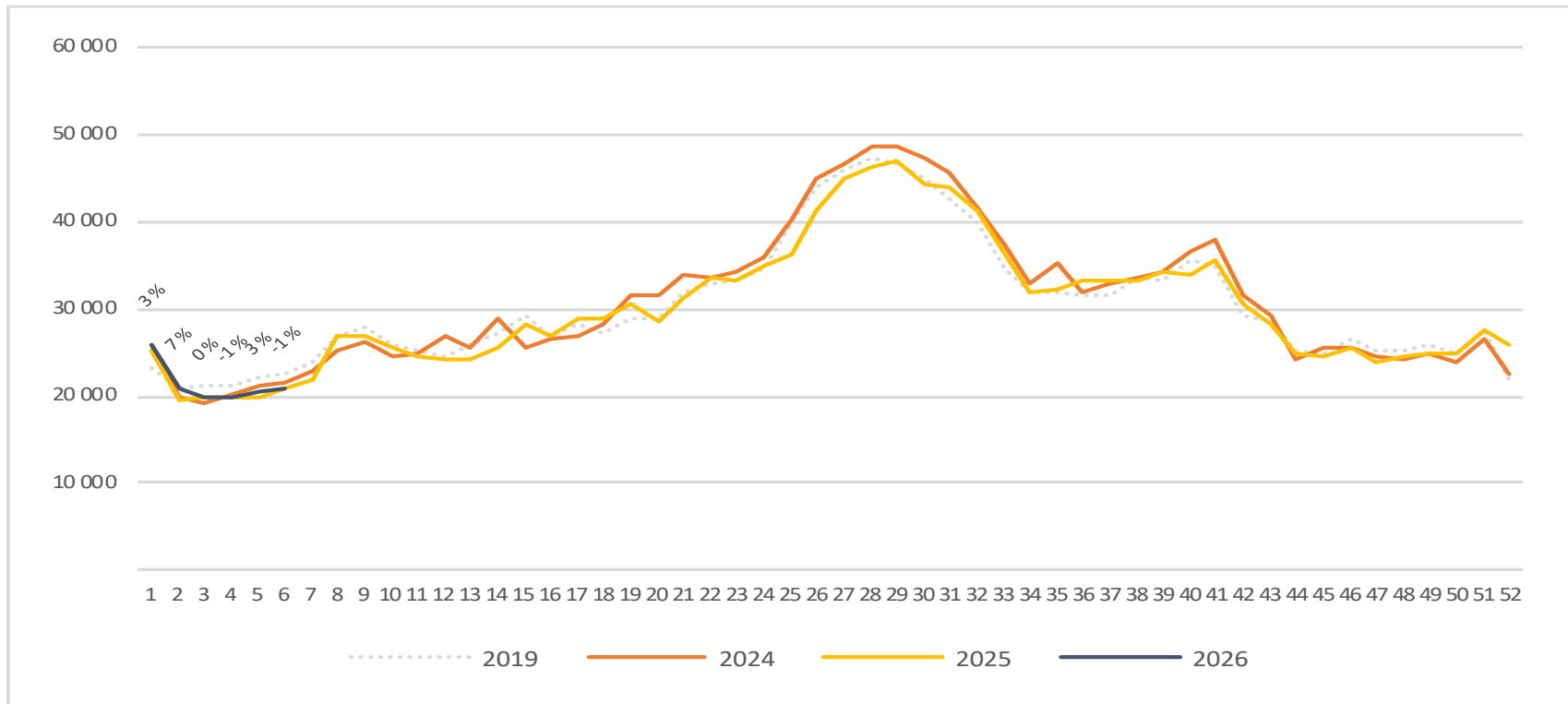
# Passengers SVG total per week

The change is measured against the same week last year



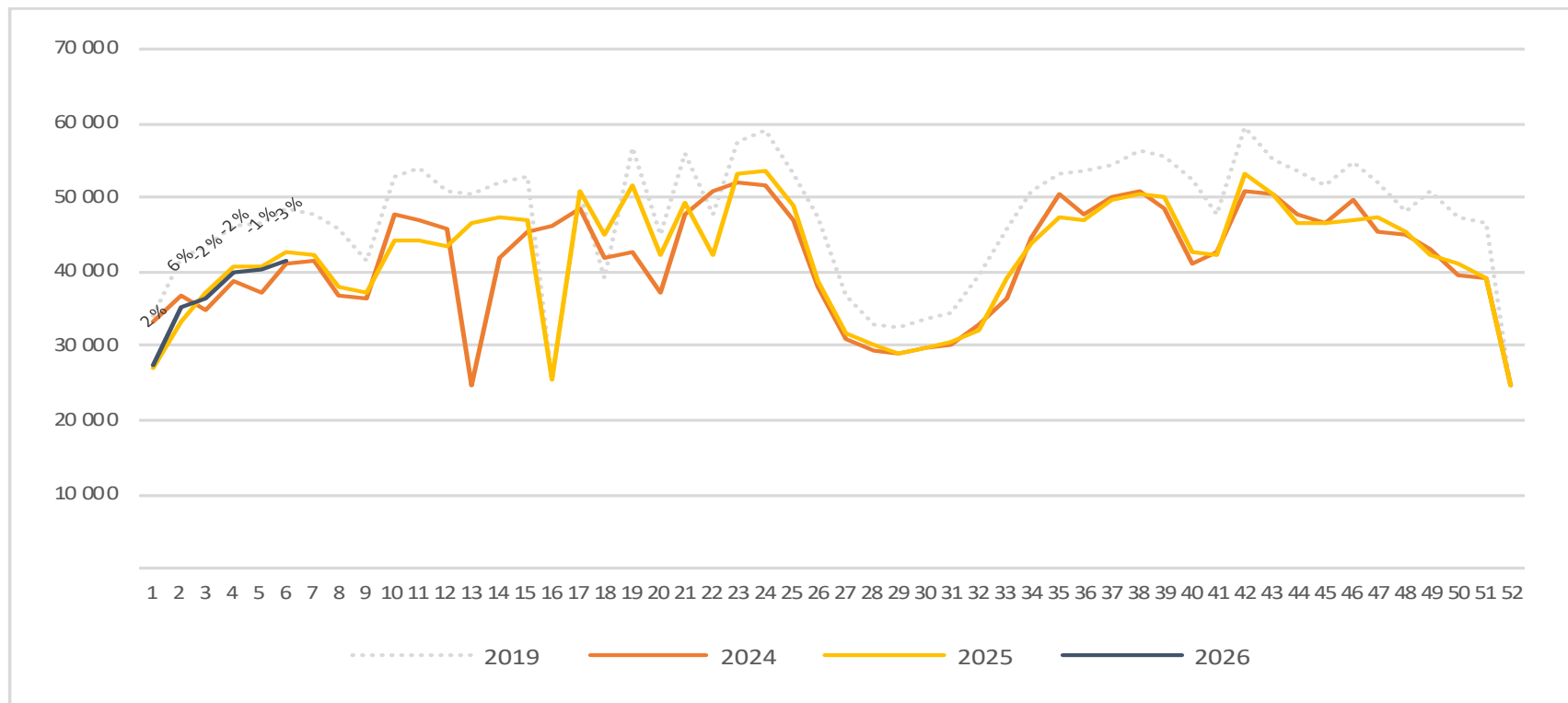
# Passengers SVG international per week

The change is measured against the same week last year

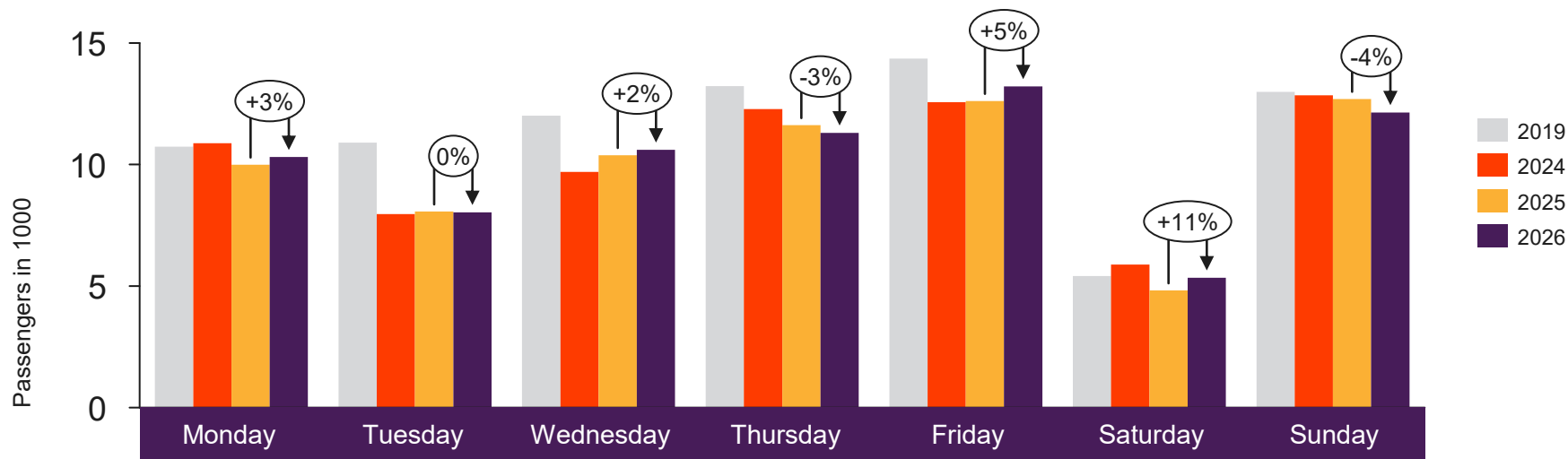


# Passengers SVG domestic per week

The change is measured against the same week last year



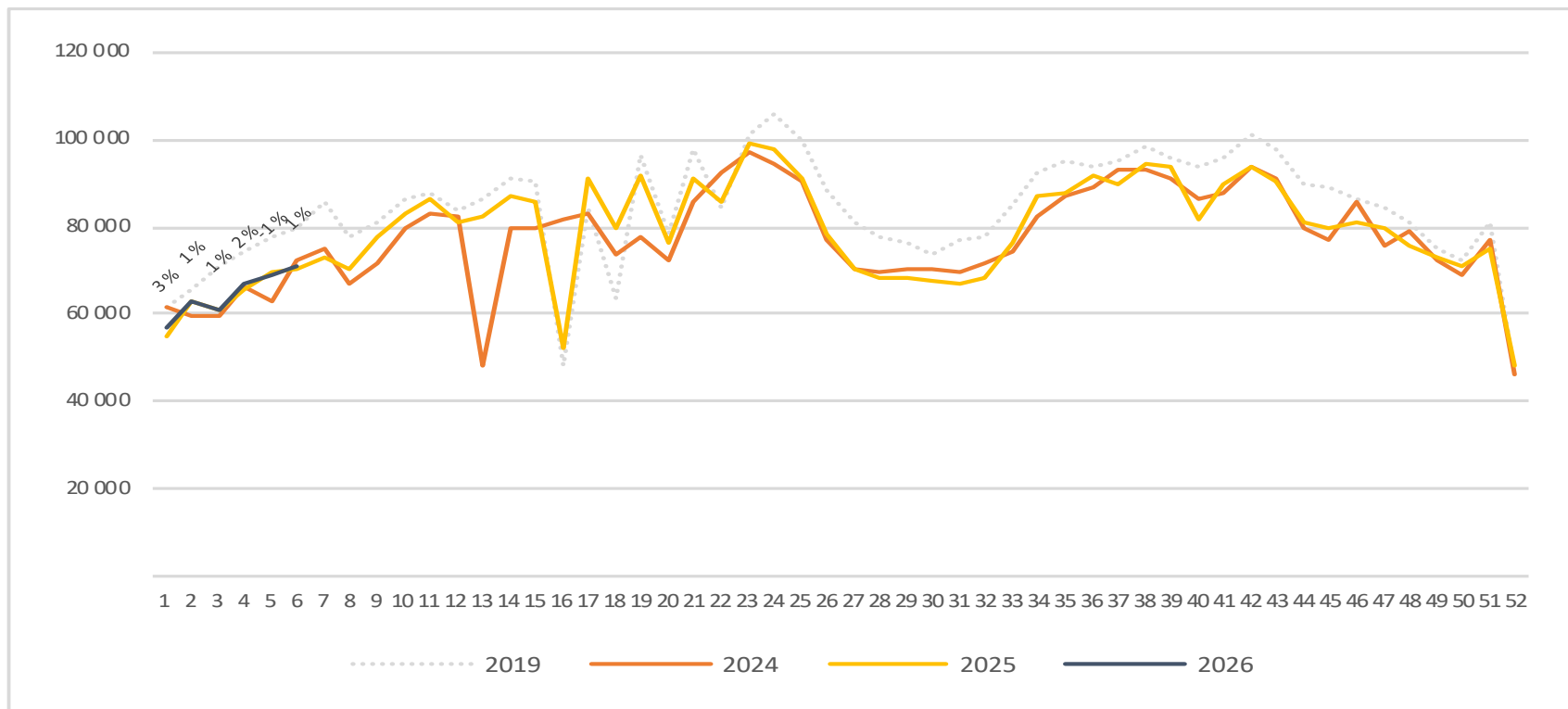
# Passengers TRD total per day week 6



	Monday	Tuesday	Wednesday	Thursday	Friday	Saturday	Sunday
2019	10 738	10 907	12 015	13 221	14 361	5 413	12 986
2024	10 878	7 961	9 692	12 287	12 568	5 890	12 846
2025	9 995	8 070	10 385	11 616	12 615	4 824	12 701
2026	10 306	8 035	10 611	11 306	13 212	5 347	12 143

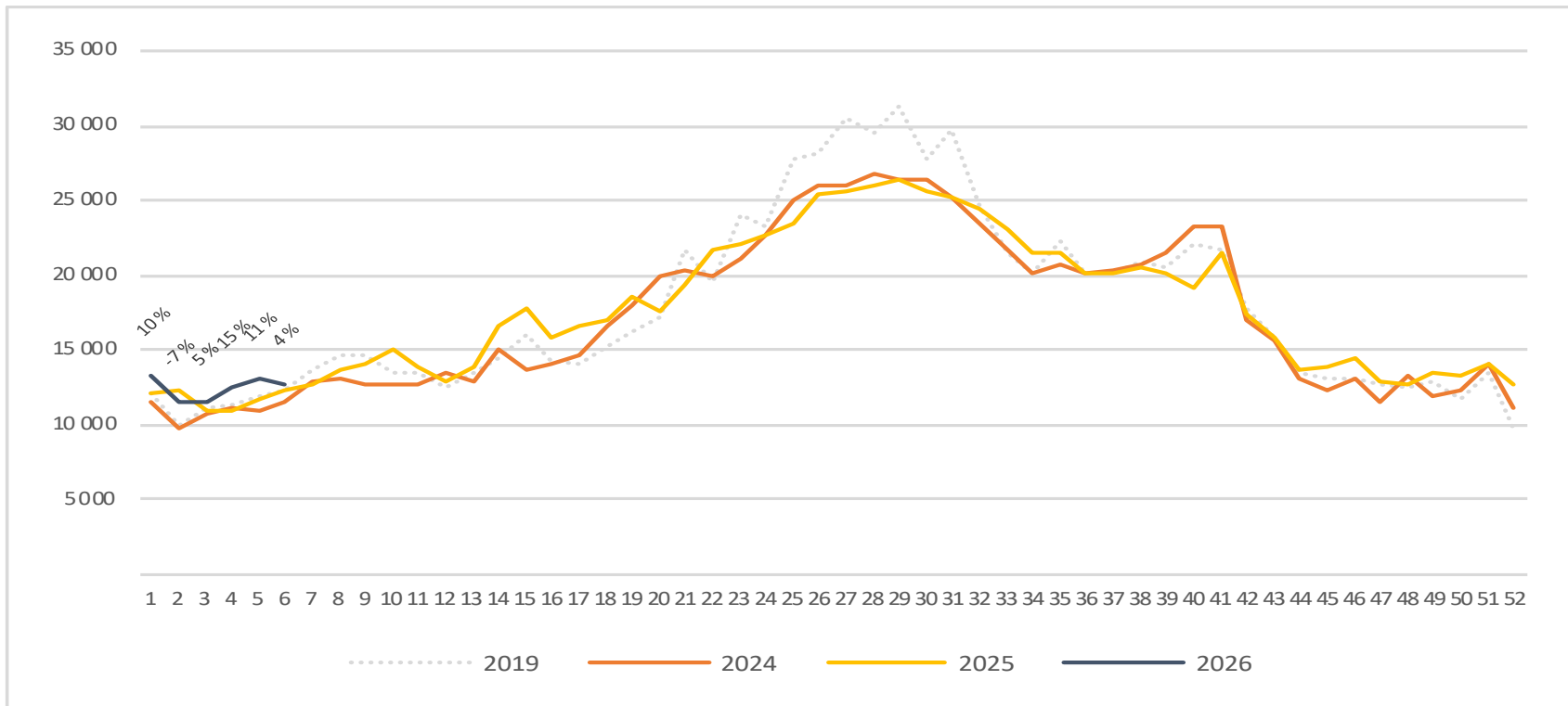
# Passengers TRD total per week

The change is measured against the same week last year



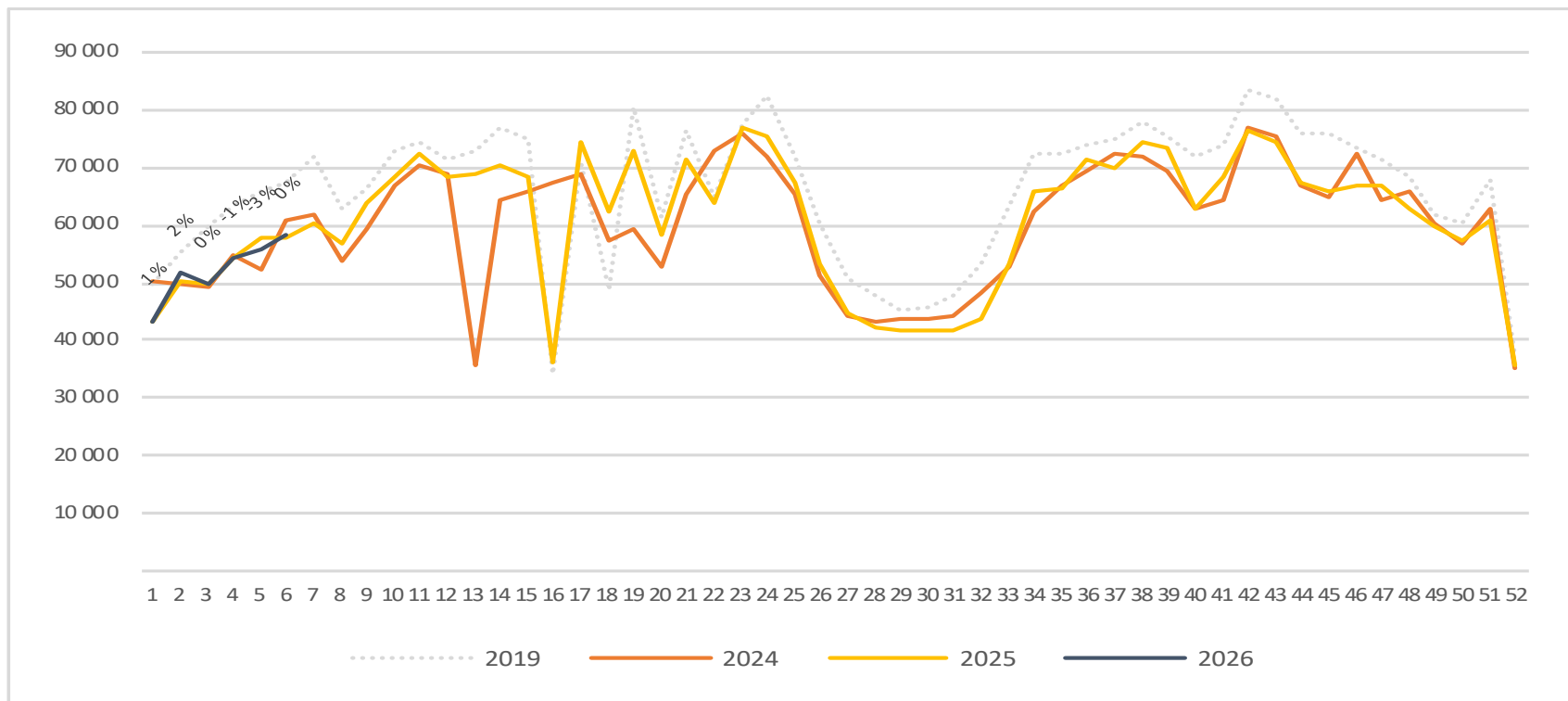
# Passengers TRD international per week

The change is measured against the same week last year

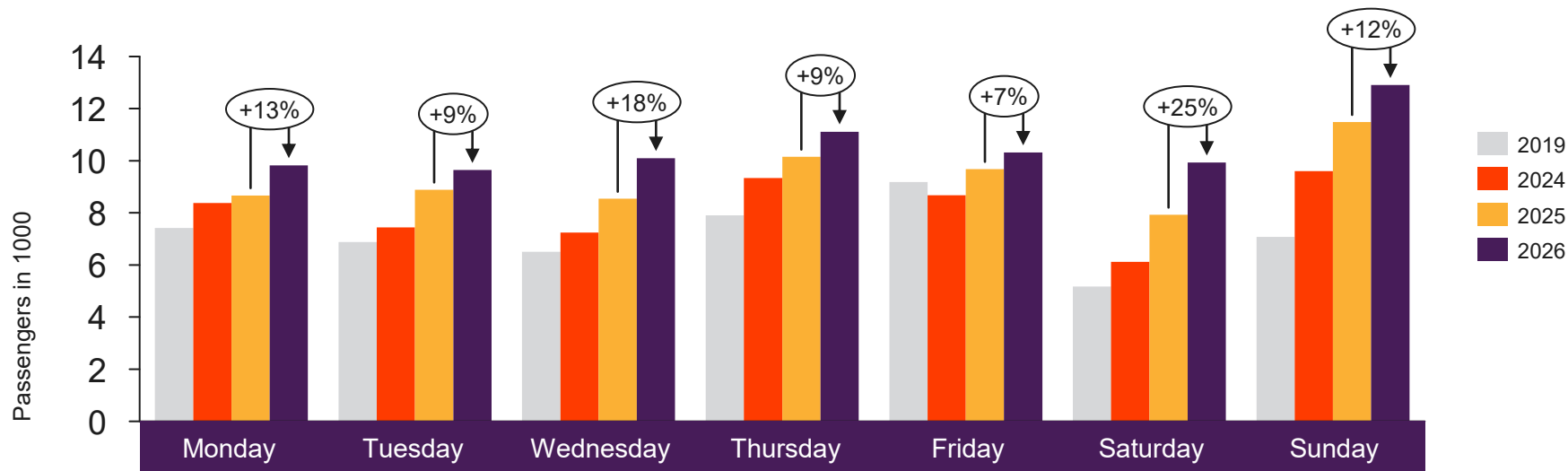


# Passengers TRD domestic per week

The change is measured against the same week last year



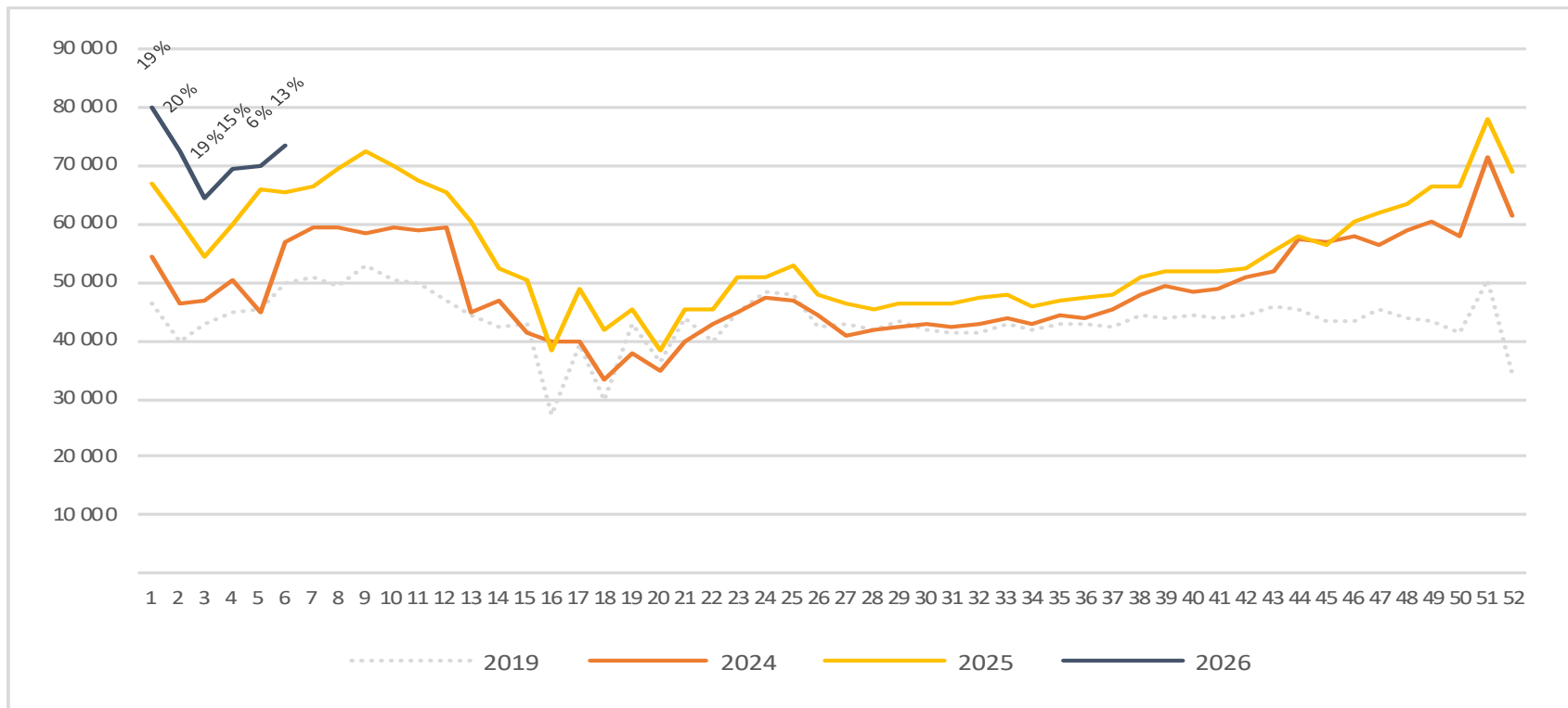
# Passengers TOS total per day week 6



	Monday	Tuesday	Wednesday	Thursday	Friday	Saturday	Sunday
2019	7 423	6 879	6 509	7 905	9 188	5 172	7 076
2024	8 377	7 437	7 240	9 339	8 680	6 119	9 597
2025	8 670	8 888	8 539	10 154	9 681	7 924	11 488
2026	9 822	9 645	10 097	11 115	10 316	9 930	12 903

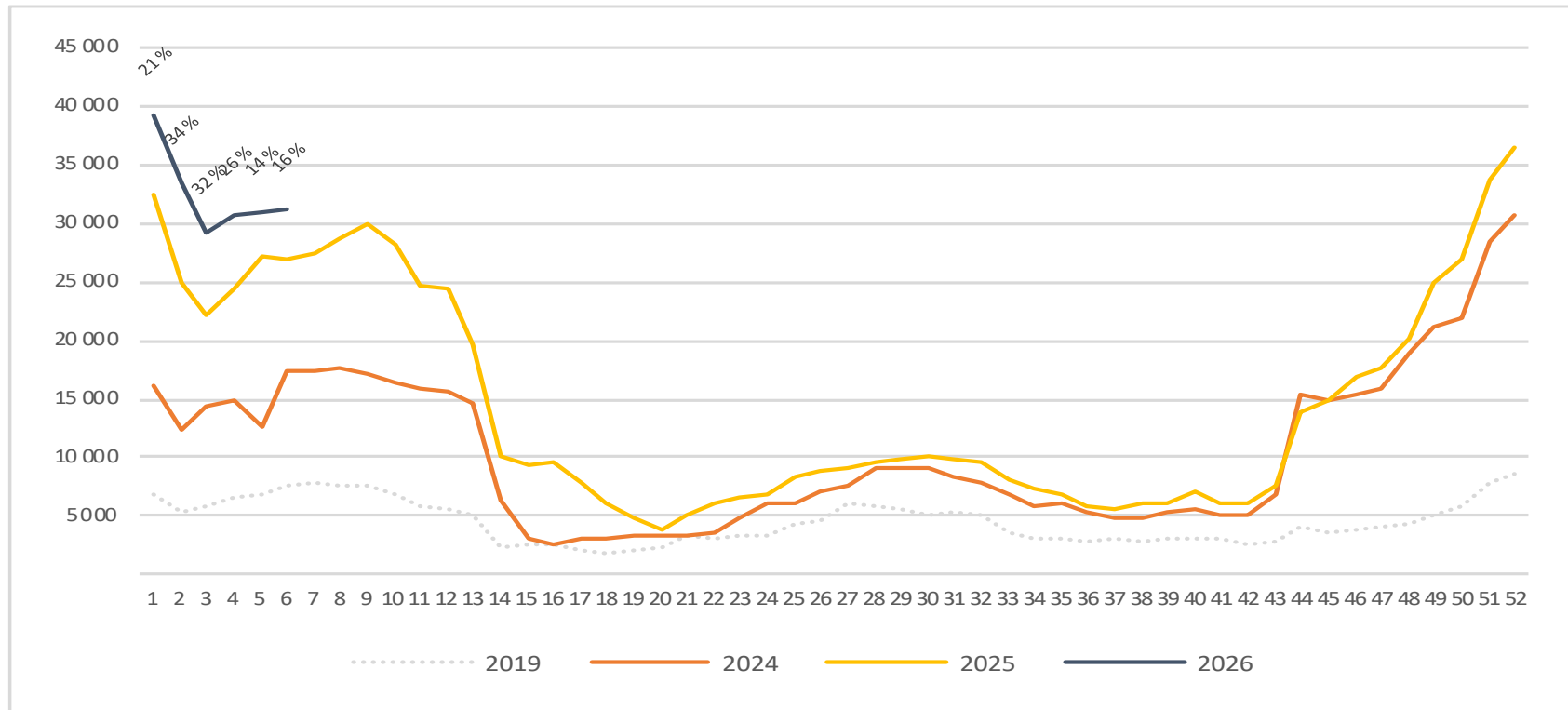
# Passengers TOS total per week

The change is measured against the same week last year



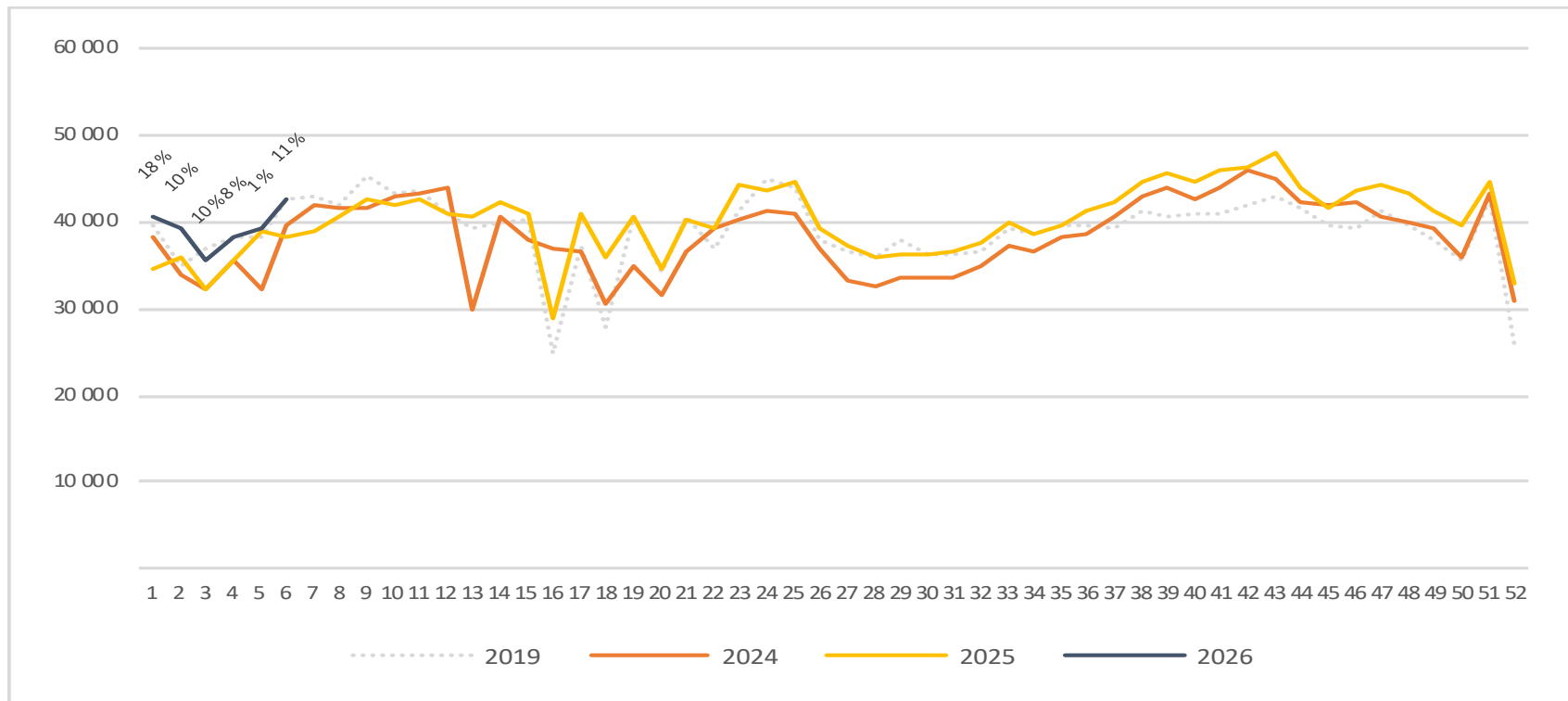
# Passengers TOS international per week

The change is measured against the same week last year



# Passengers TOS domestic per week

The change is measured against the same week last year



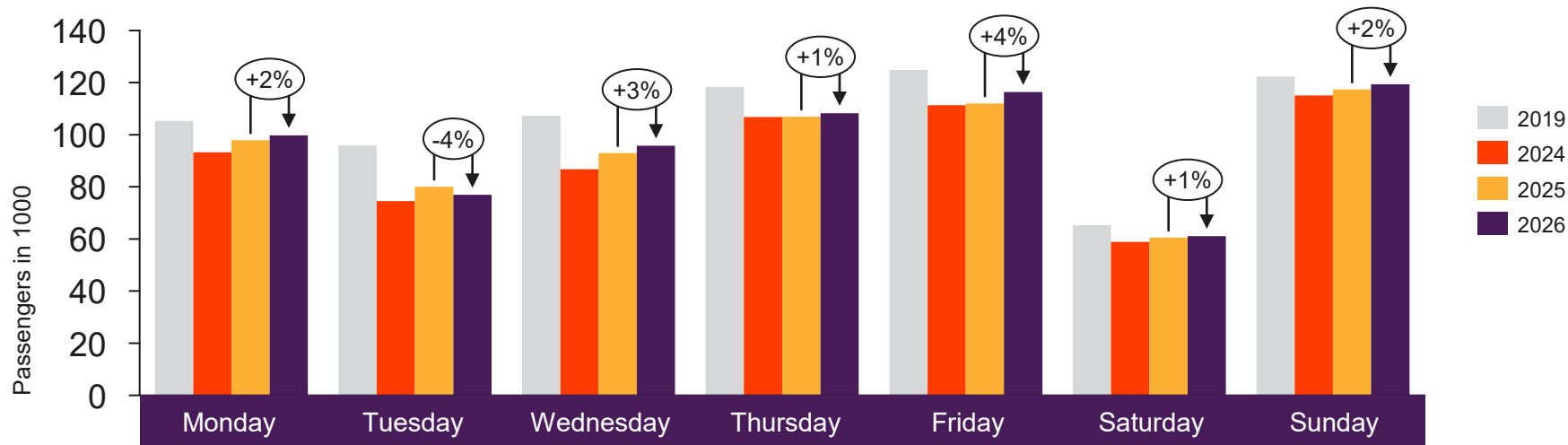


[Return to content page](#)

# Top 4 airports

Total passenger numbers from Oslo, Bergen, Stavanger and Trondheim

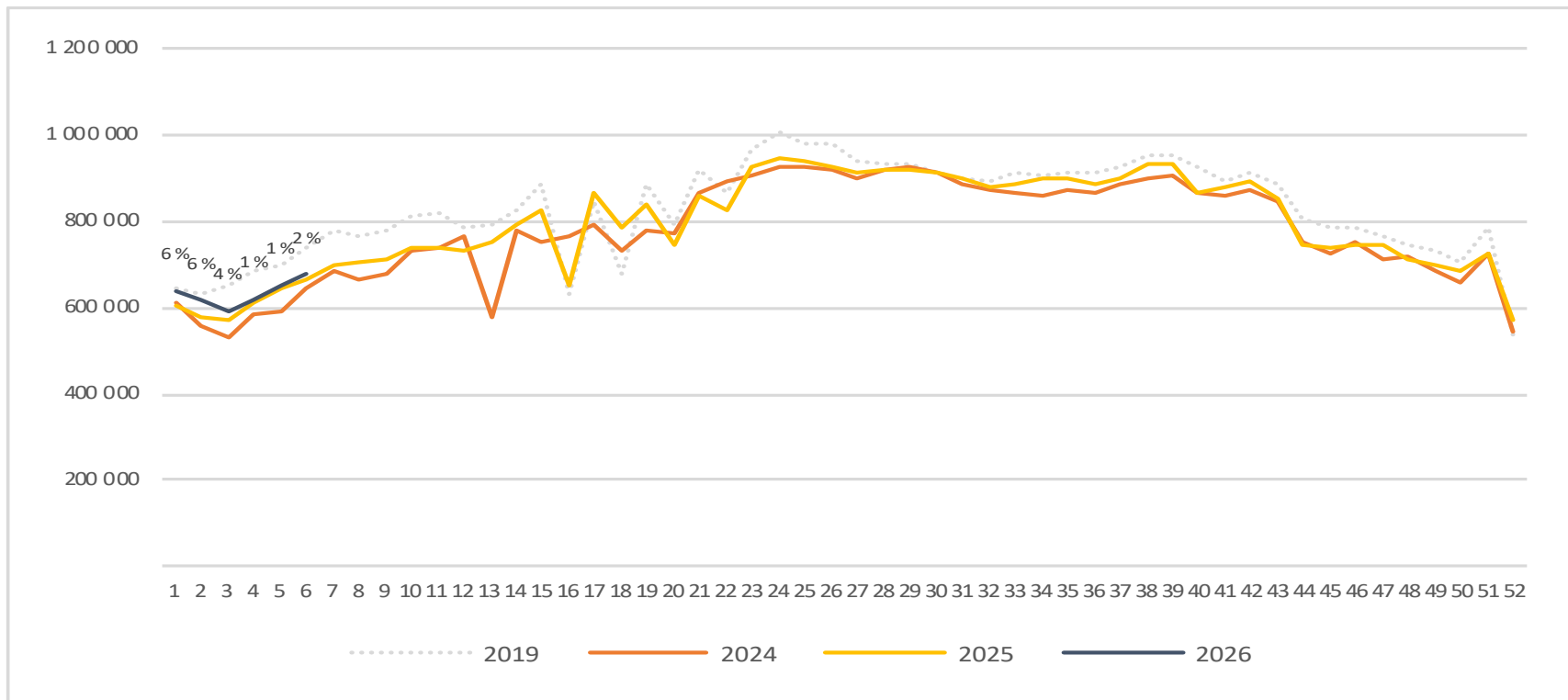
# Passengers top 4 airports total per day week 6



	Monday	Tuesday	Wednesday	Thursday	Friday	Saturday	Sunday
2019	105 264	95 923	107 251	118 368	124 879	65 296	122 294
2024	93 239	74 568	86 752	106 782	111 364	58 852	115 062
2025	97 877	80 064	92 960	106 904	112 005	60 530	117 411
2026	99 808	76 942	95 851	108 295	116 365	61 141	119 388

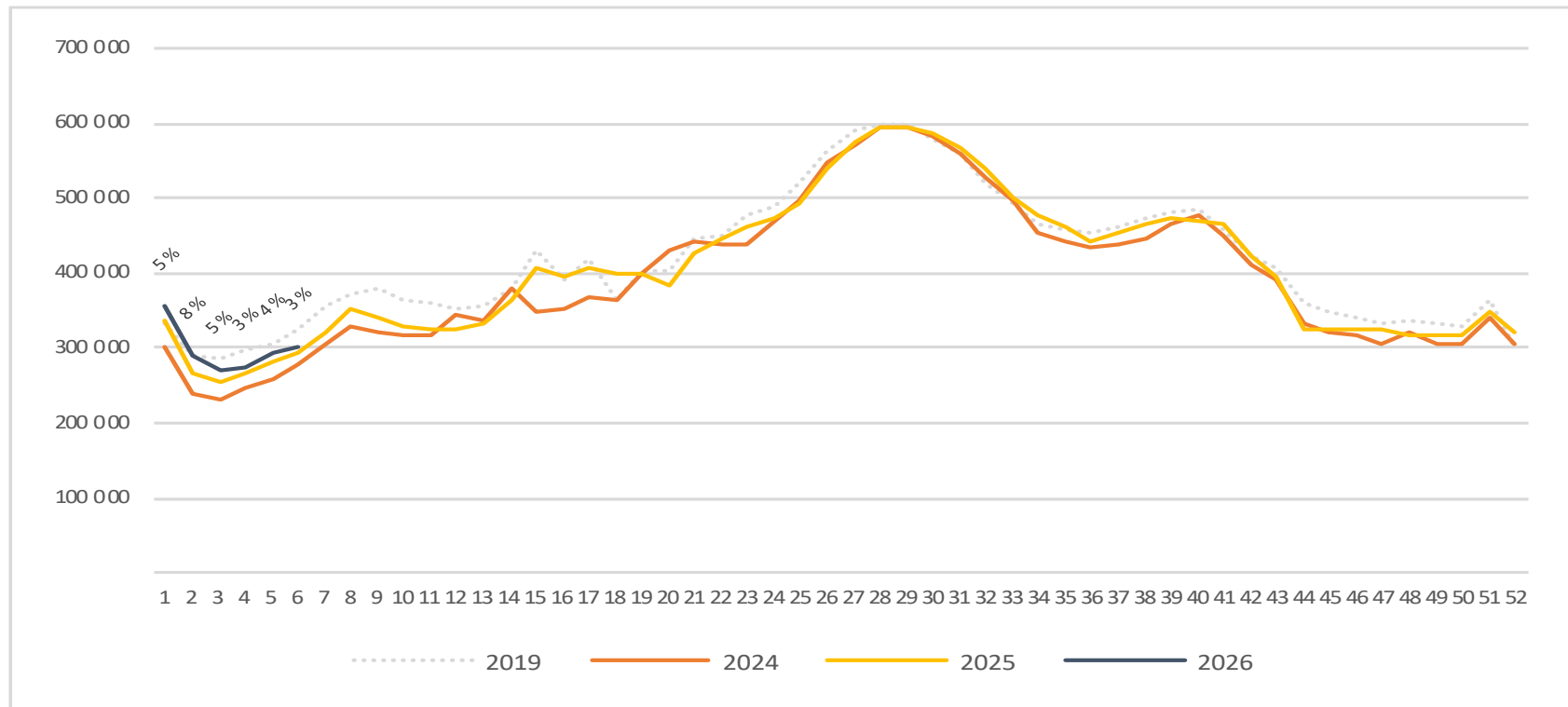
# Passengers top 4 airports total per week

The change is measured against the same week last year



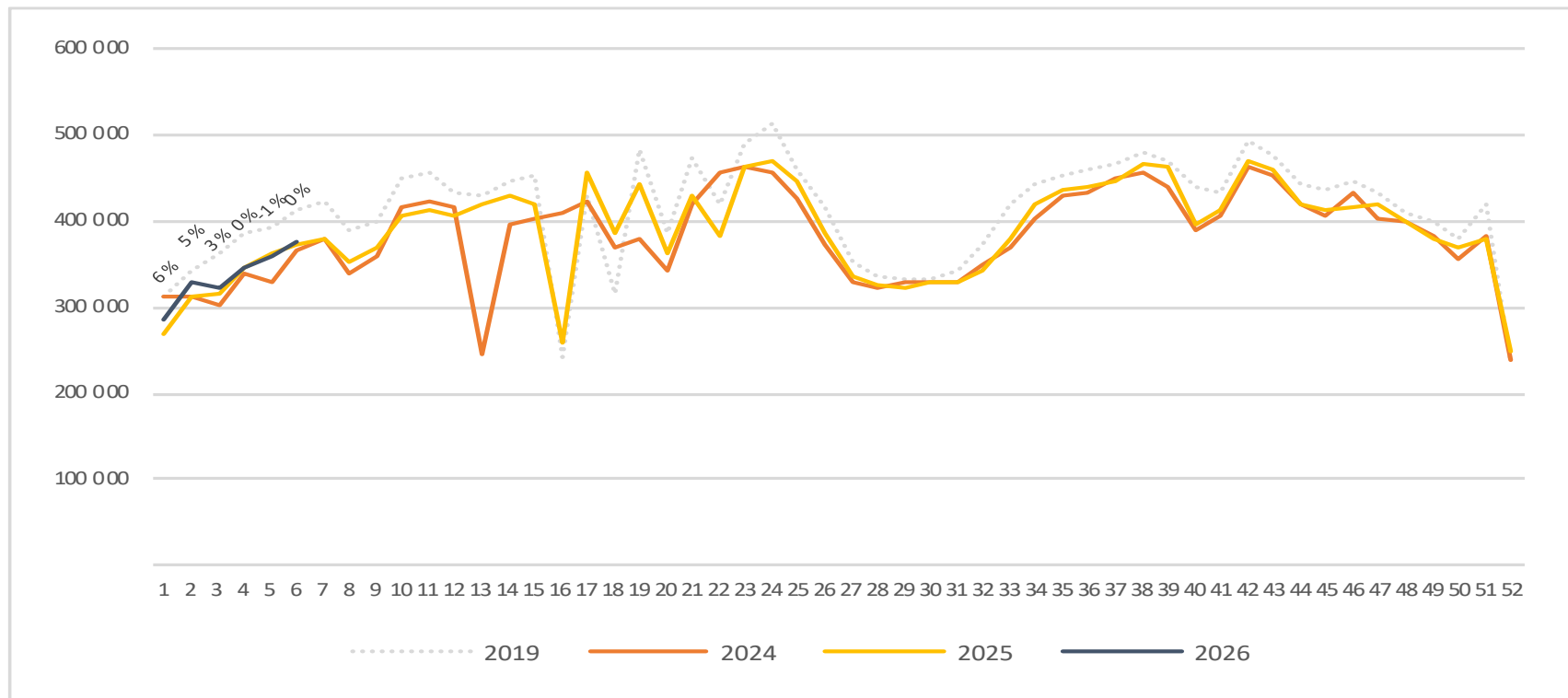
# Passengers top 4 airports international per week

The change is measured against the same week last year



# Passengers top 4 airports domestic per week

The change is measured against the same week last year



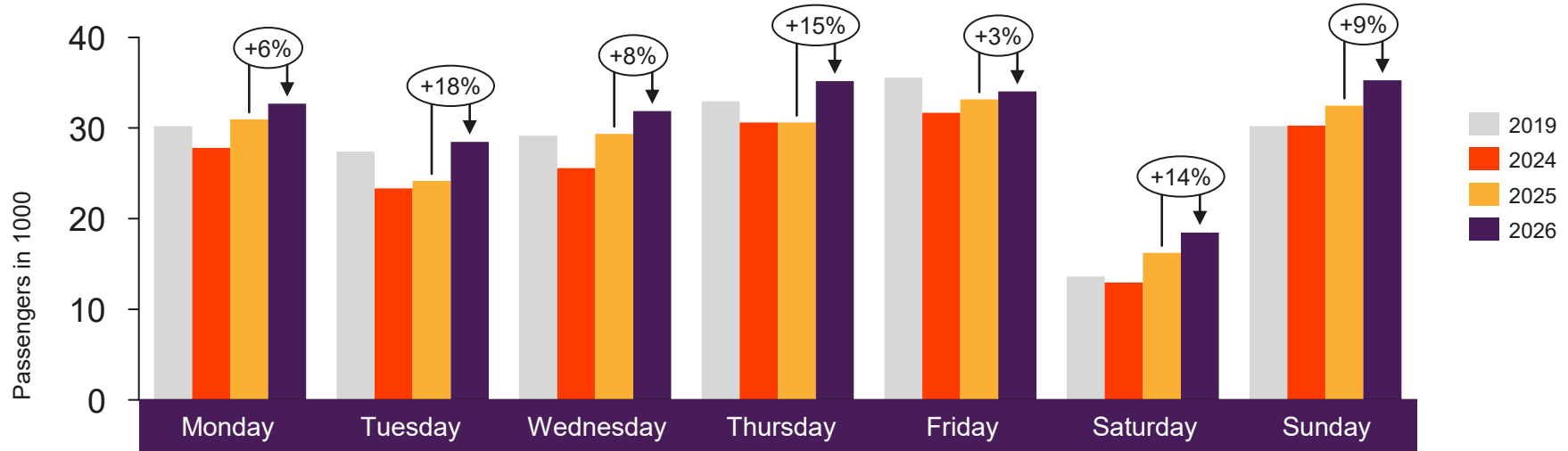


[Return to content page](#)

# Regional and local airports

Total passenger numbers from Alta, Andenes, Bardufoss, Berlevåg, Bodø, Brønnøysund, Båtsfjord, Florø, Førde, Hammerfest, Harstad/Narvik, Hasvik, Honningsvåg, Kirkenes, Kristiansand, Kristiansund, Lakselv, Leknes, Mehamn, Mo i Rana, Molde, Mosjøen, Namsos, Røros, Rørvik, Røst, Sandane, Sandnessjøen, Sogndal, Stokmarknes, Svalbard, Svolvær, Sørkjosen, Tromsø, Vadsø, Vardø, Værøy, Ørsta-Volda and Ålesund

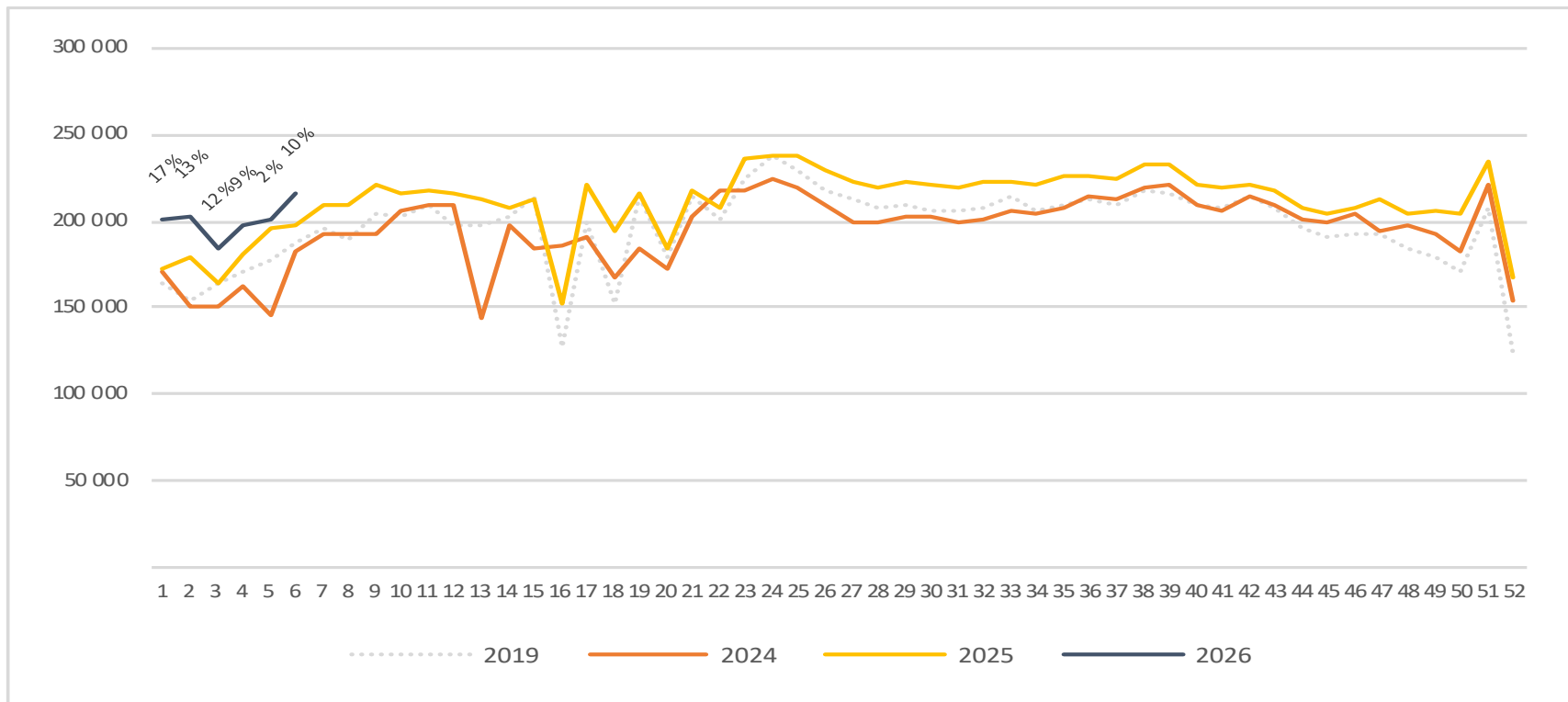
# Passengers Regional and local airports total per day week 6



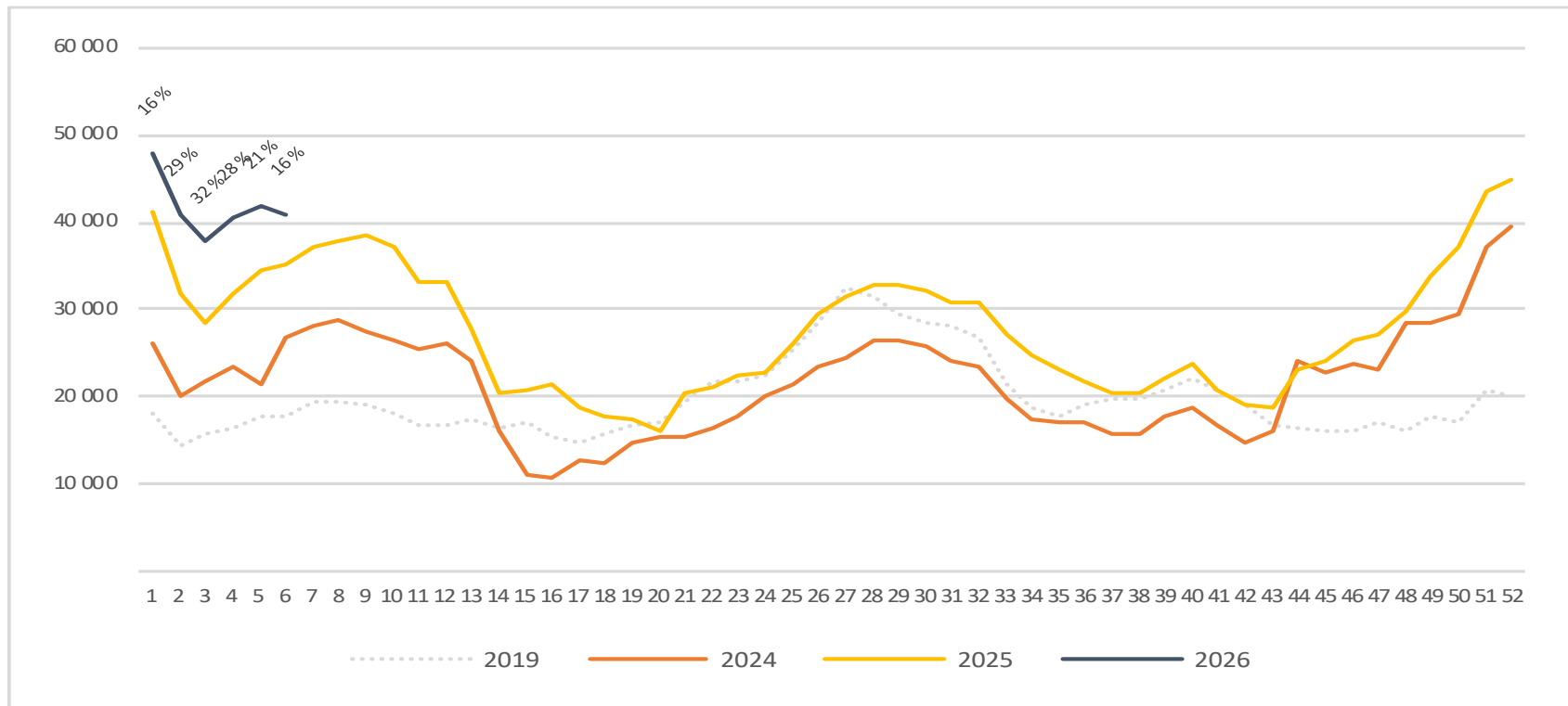
	Monday	Tuesday	Wednesday	Thursday	Friday	Saturday	Sunday
2019	30 212	27 392	29 174	32 940	35 553	13 622	30 195
2024	27 817	23 339	25 578	30 621	31 678	12 949	30 272
2025	30 966	24 174	29 368	30 600	33 166	16 237	32 485
2026	32 696	28 481	31 861	35 167	34 029	18 478	35 285

# Passengers Regional and local airports total per week

The change is measured against the same week last year

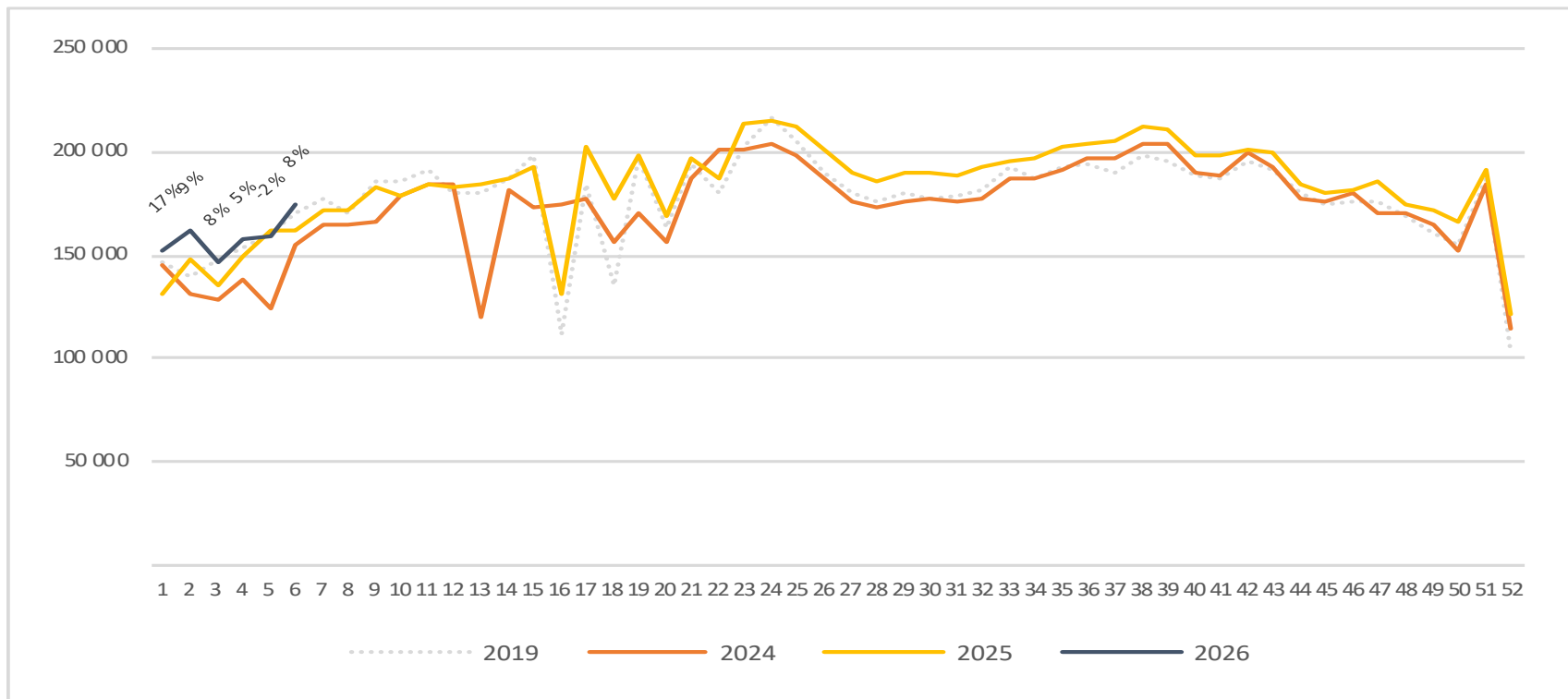


# Passengers Regional and local airports international per week



# Passengers Regional and local airports domestic per week

The change is measured against the same week last year



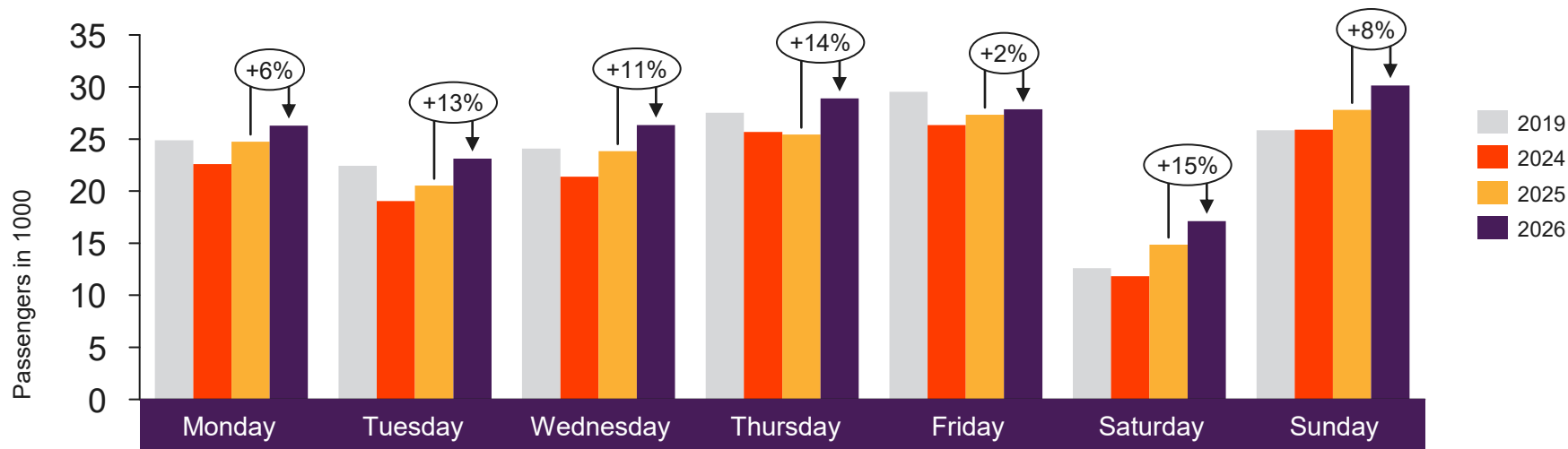


[Return to content  
page](#)

# Regional airports

Total passenger numbers from Alta, Bodø, Harstad/Narvik, Kirkenes, Kristiansand, Kristiansund, Molde, Svalbard, Tromsø and Ålesund

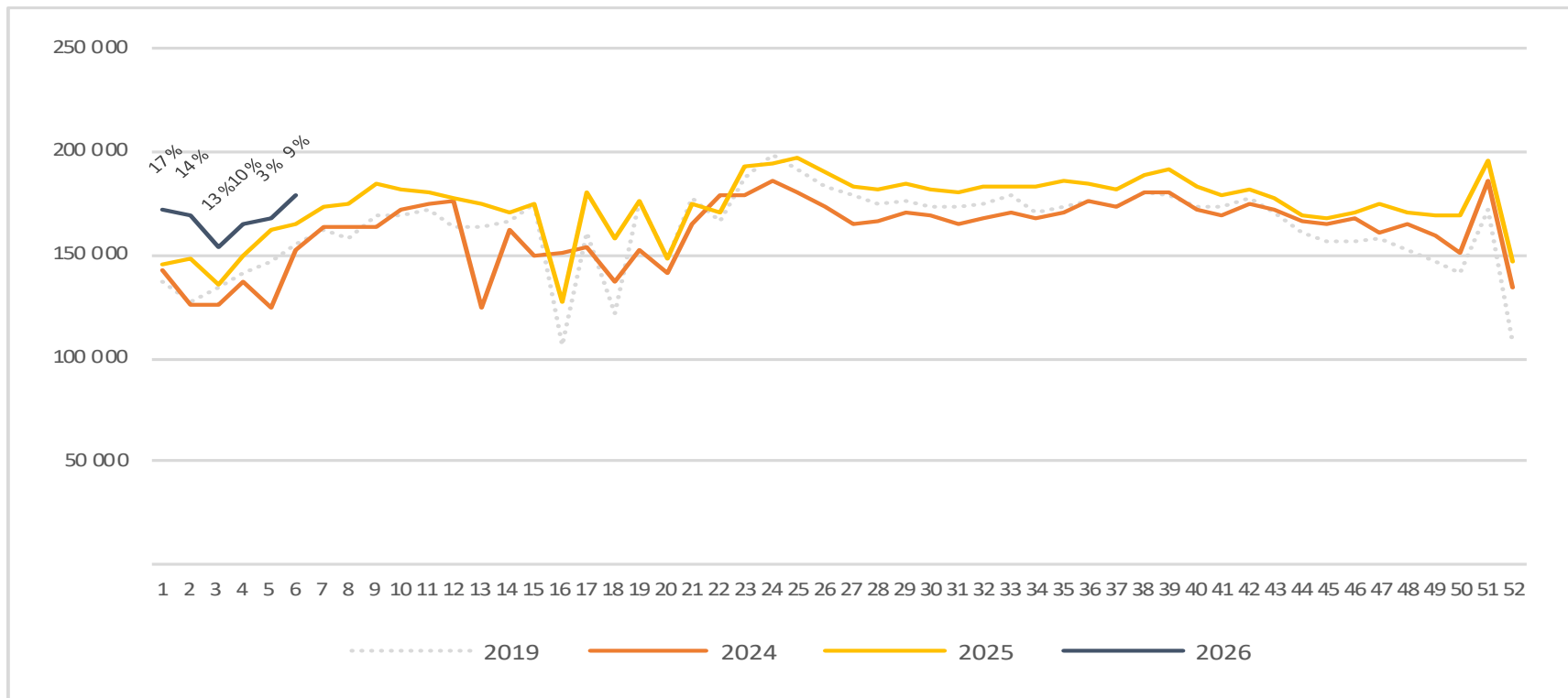
# Passengers Regional airports total per day week 6



	Monday	Tuesday	Wednesday	Thursday	Friday	Saturday	Sunday
2019	24 893	22 428	24 075	27 530	29 540	12 600	25 851
2024	22 596	19 053	21 390	25 688	26 356	11 833	25 895
2025	24 747	20 521	23 826	25 428	27 350	14 872	27 794
2026	26 287	23 119	26 356	28 896	27 850	17 122	30 148

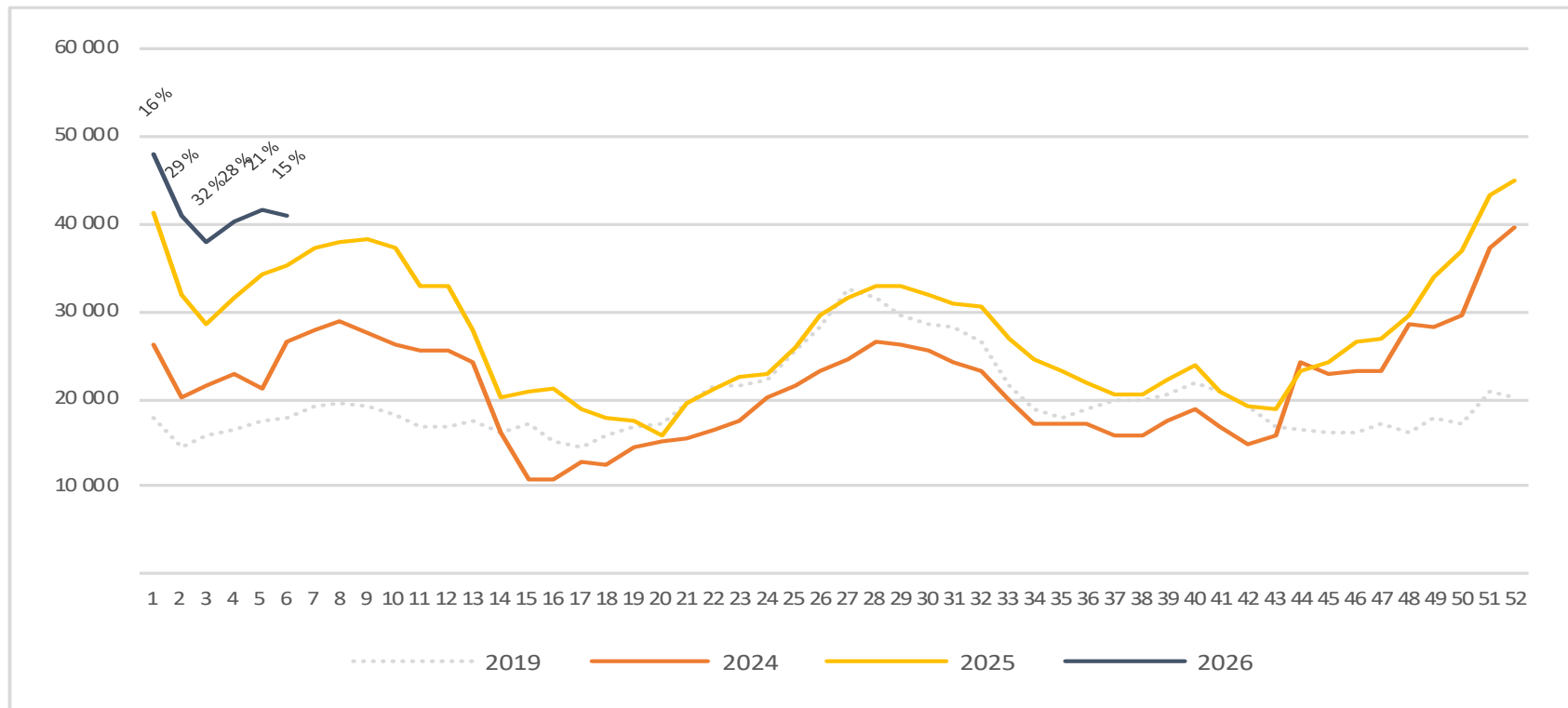
# Passengers Regional airports total per week

The change is measured against the same week last year



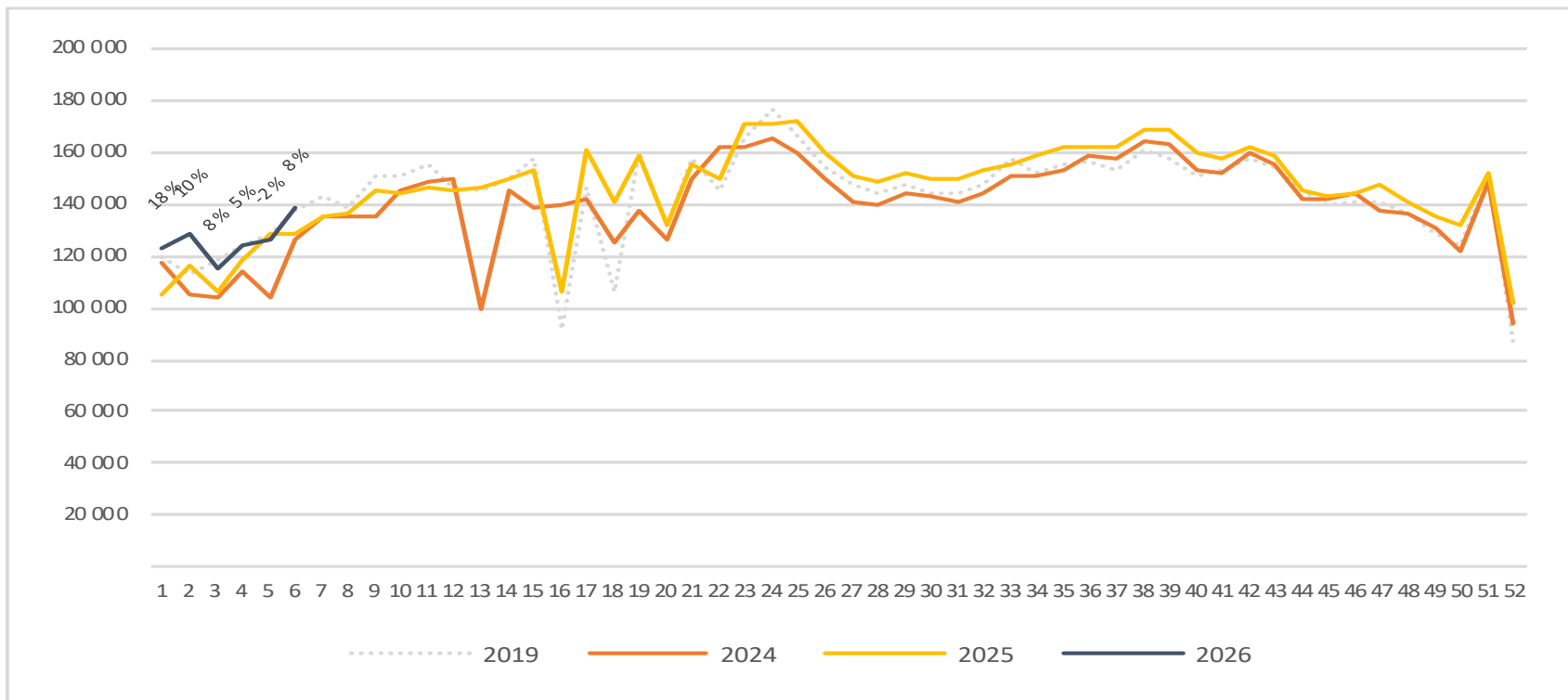
# Passengers Regional airports international per week

The change is measured against the same week last year



# Passengers Regional airports domestic per week

The change is measured against the same week last year



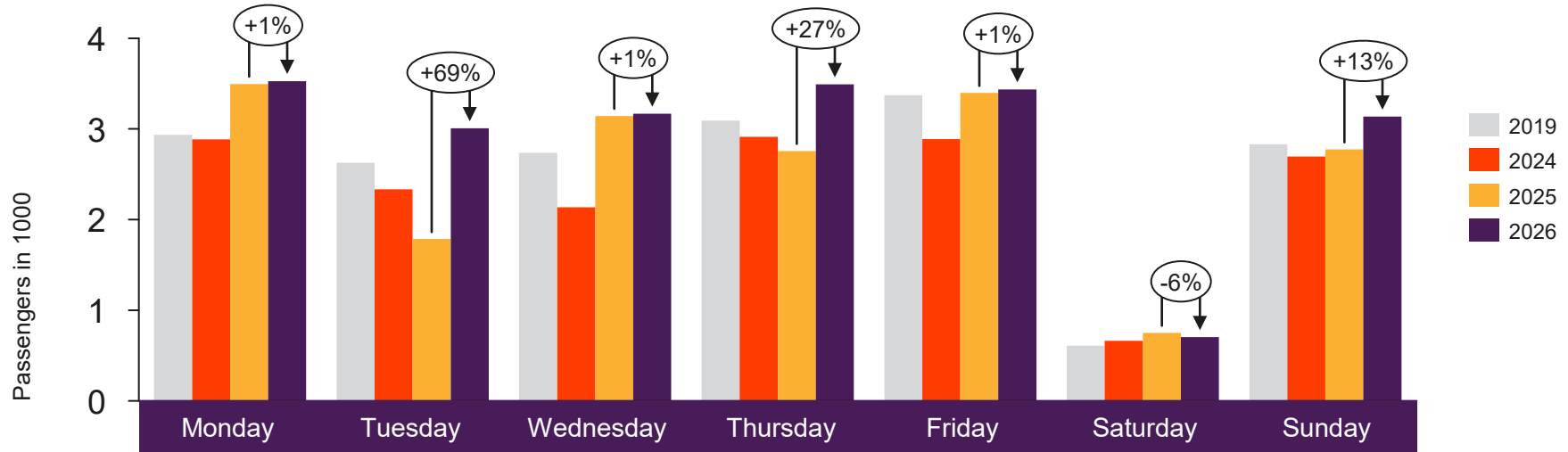


[Return to content  
page](#)

# Local Airports in Trøndelag and Nordland (Local Mid airports)

Total passenger numbers from Andenes, Bardufoss, Brønnøysund, Leknes, Mo i Rana, Mosjøen, Namsos, Rørvik, Røst, Sandnessjøen, Stokmarknes, Svolvær and Værøy

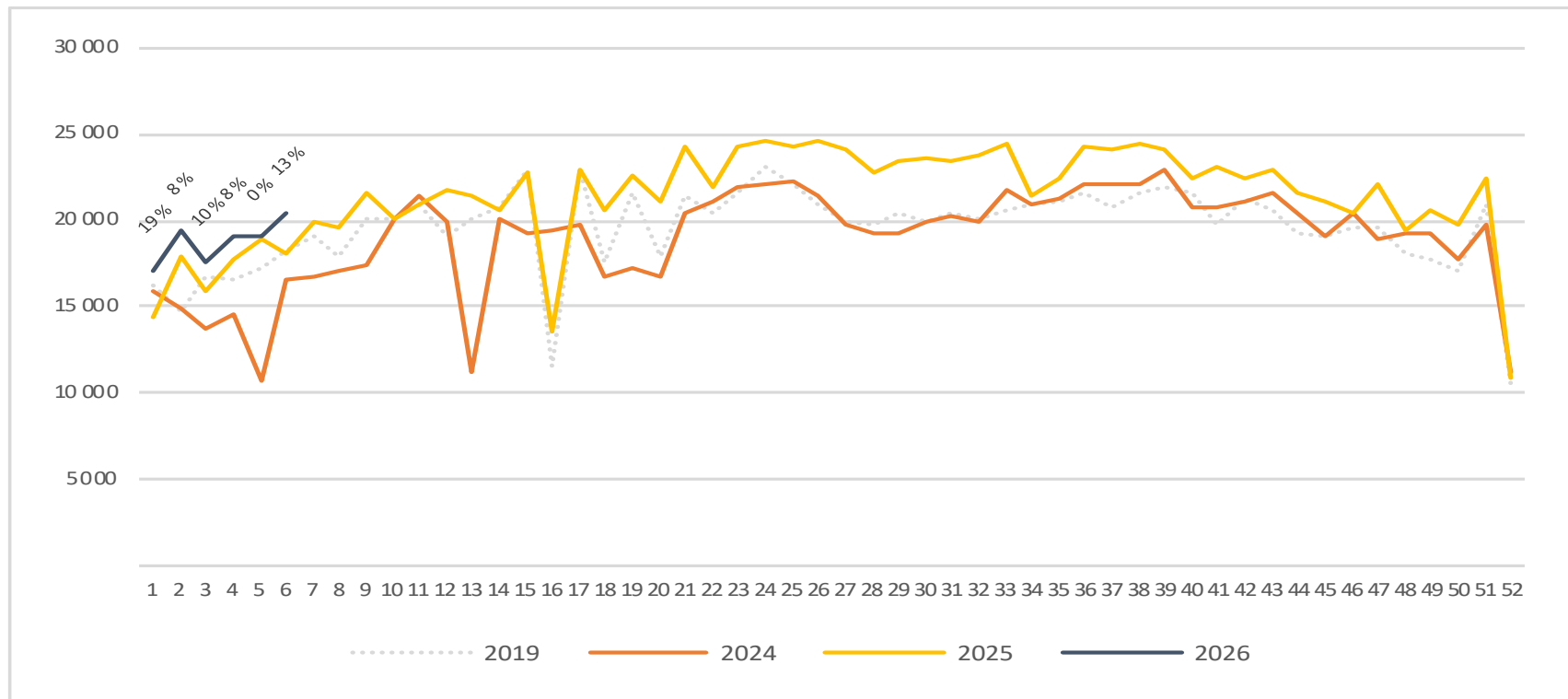
# Passengers Local Mid airports total per day week 6



2019	2 936	2 626	2 738	3 092	3 373	609	2 830
2024	2 885	2 333	2 137	2 912	2 888	662	2 697
2025	3 497	1 785	3 144	2 757	3 397	750	2 775
2026	3 528	3 008	3 167	3 493	3 437	703	3 136

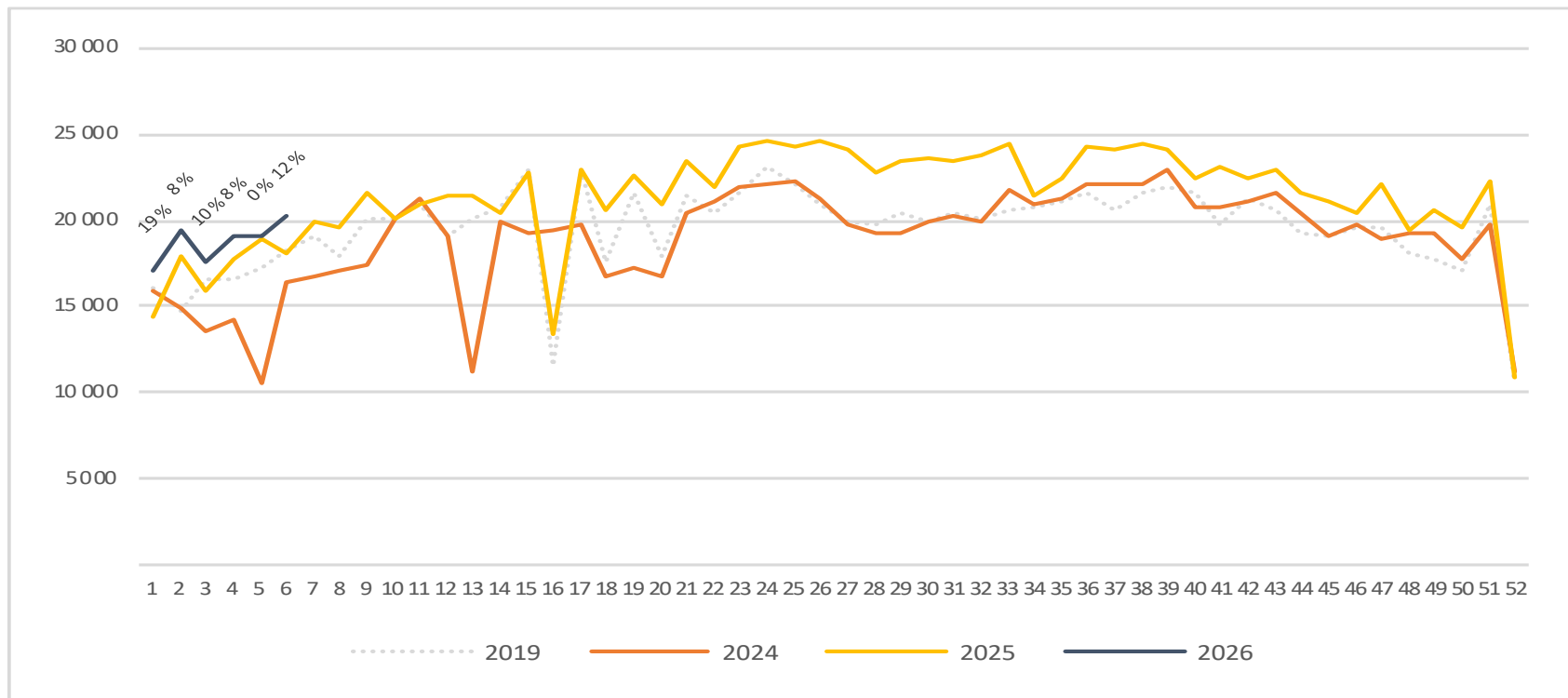
# Passengers Local Mid airports total per week

The change is measured against the same week last year



# Passengers Local Mid airports domestic per week

The change is measured against the same week last year



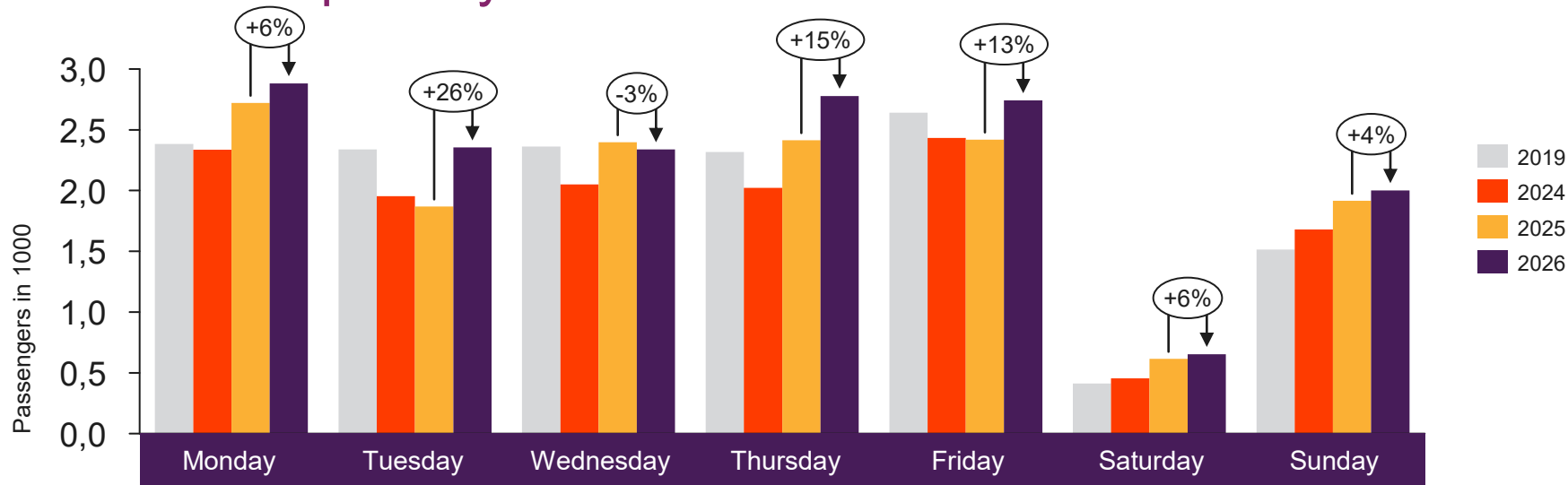


[Return to content  
page](#)

# Local airports on the West coast and in Troms and Finnmark

Total passenger numbers from Berlevåg, Båtsfjord, Florø, Førde, Hammerfest, Hasvik, Honningsvåg, Lakselv, Mehamn, Røros, Sandane, Sogndal, Sørkjosen, Vadsø, Vardø and Ørsta-Volda

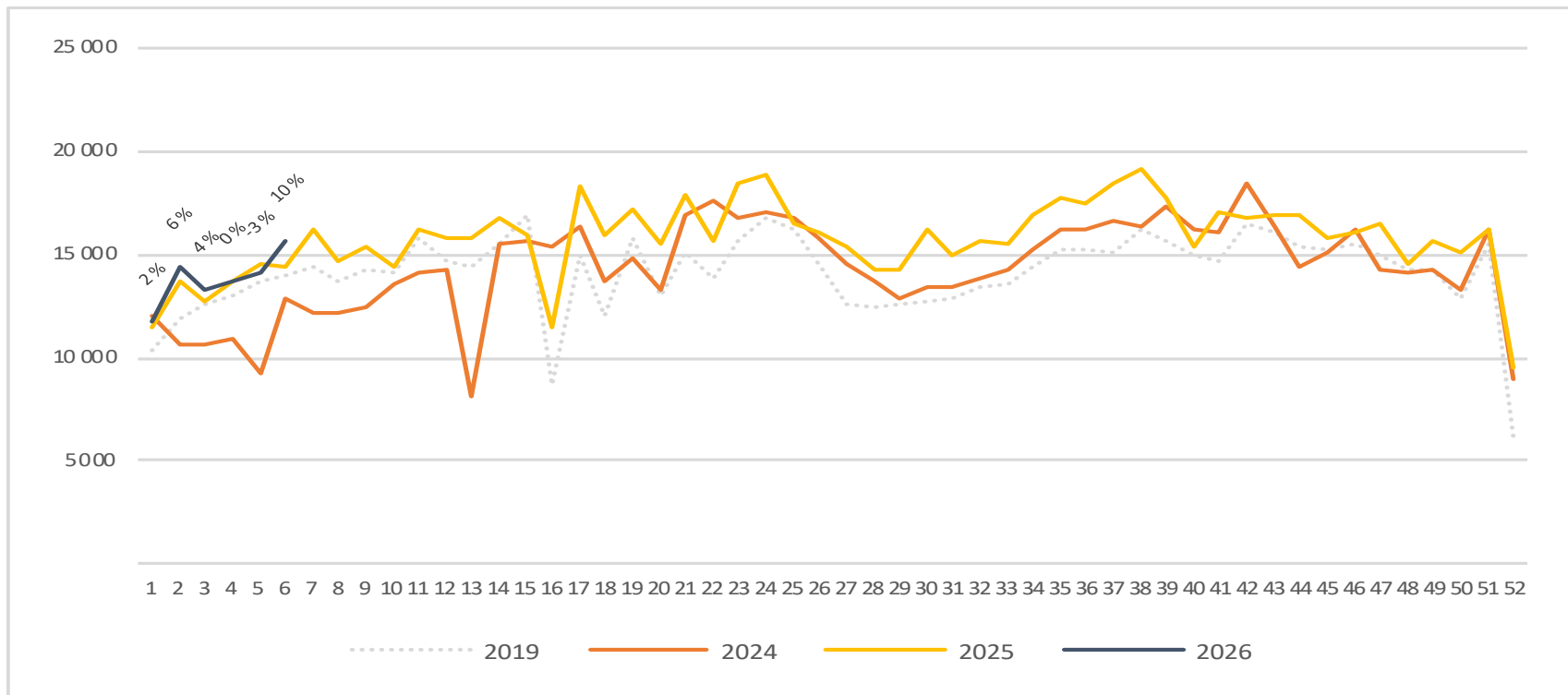
# Passengers local airports on the West coast and in Troms and Finnmark total per day week 6



2019	2 383	2 338	2 361	2 318	2 640	413	1 514
2024	2 336	1 953	2 051	2 021	2 434	454	1 680
2025	2 722	1 868	2 398	2 415	2 419	615	1 916
2026	2 881	2 354	2 338	2 778	2 742	653	2 001

# Passengers local airports on the West coast and in Troms and Finnmark total per week

The change is measured against the same week last year



# Passengers local airports on the West coast and in Troms and Finnmark domestic per week

The change is measured against the same week last year

