



Passenger numbers per week

Preliminary figures

- The figures for the previous week are preliminary. It takes some time for all passenger numbers to be reported, so the figures for the previous week may be lower than the final figures.
- The figures are from SIA, Avinor's traffic database.

Content

- Top 10 airports
- Avinor total
- Selected airports
- The 4 biggest airports
- Regional and local airports
 - Regional airports
 - Local airports in Trøndelag and Nordland
 - Local airports on the west coast of Norway and in Troms and Finnmark

Top 10 airports, total, week 51

Airport	2019	2023	2024	2025	2025 vs. 2024	
					Change	Change %
Oslo	516 740	395 114	471 806	472 325	519	0 %
Bergen	111 754	99 270	111 466	112 067	601	1 %
Tromsø	50 658	50 170	71 678	77 083	5 405	8 %
Trondheim	81 314	64 640	76 982	74 531	-2 451	-3 %
Stavanger	74 160	56 472	65 821	66 516	695	1 %
Bodø	33 409	26 772	33 432	35 692	2 260	7 %
Ålesund	22 109	18 650	19 713	18 982	-731	-4 %
Harstad/Narvik	15 607	13 010	16 100	16 911	811	5 %
Kristiansand	19 349	13 088	15 371	15 888	517	3 %
Alta	7 018	5 400	7 393	7 547	154	2 %

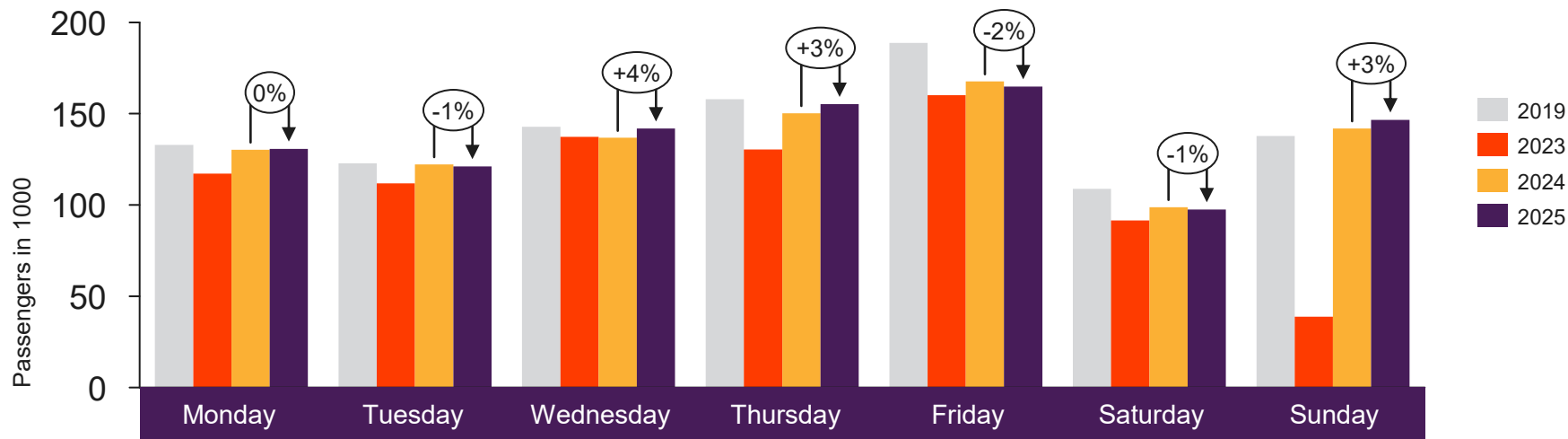


[Return to content
page](#)

Avinor total

Passenger numbers for all Avinor airports

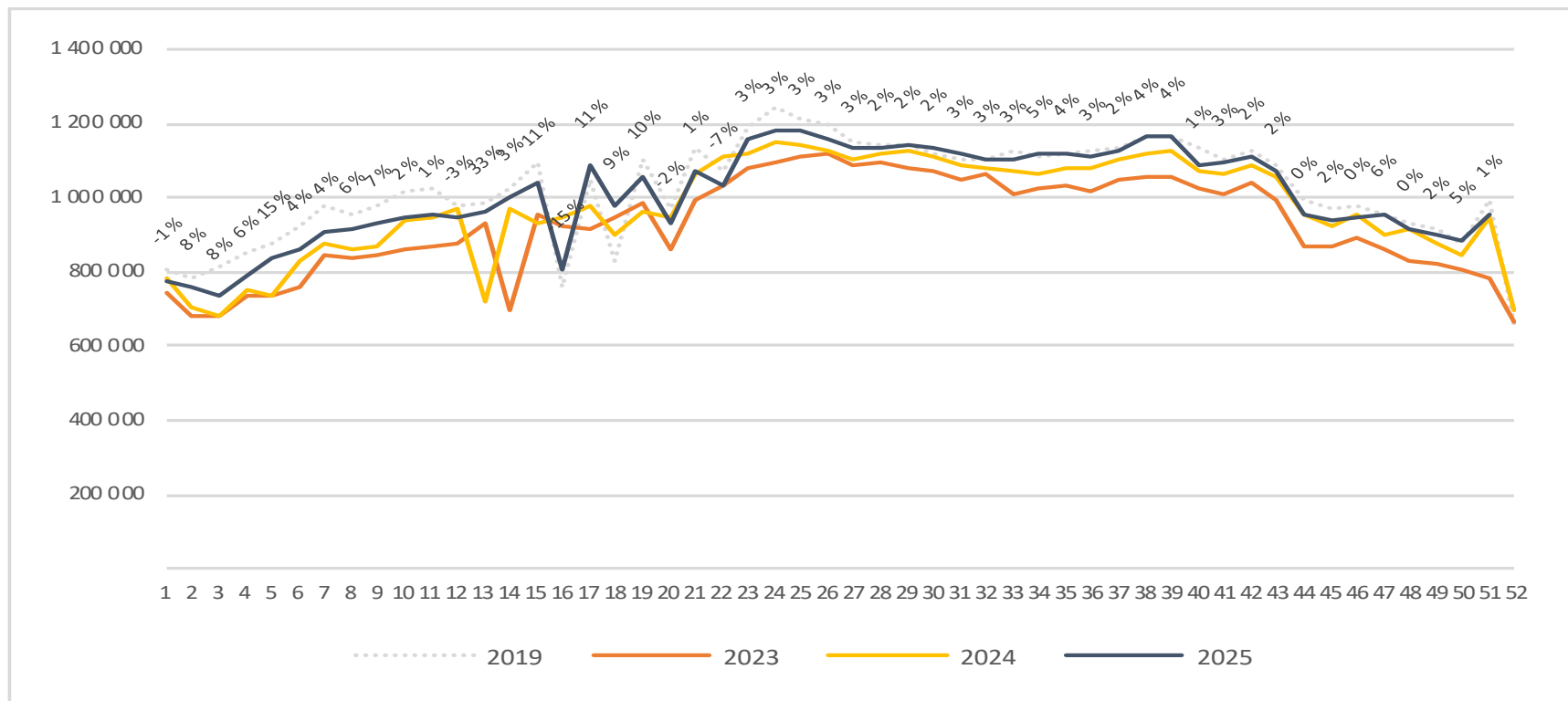
Passengers Avinor total per day week 51



2019	132 970	122 796	142 864	157 880	188 850	108 824	137 831
2023	117 186	111 765	137 373	130 389	160 140	91 484	38 742
2024	130 293	122 242	136 803	150 267	167 772	98 815	141 963
2025	130 742	121 165	141 860	155 265	164 895	97 584	146 661

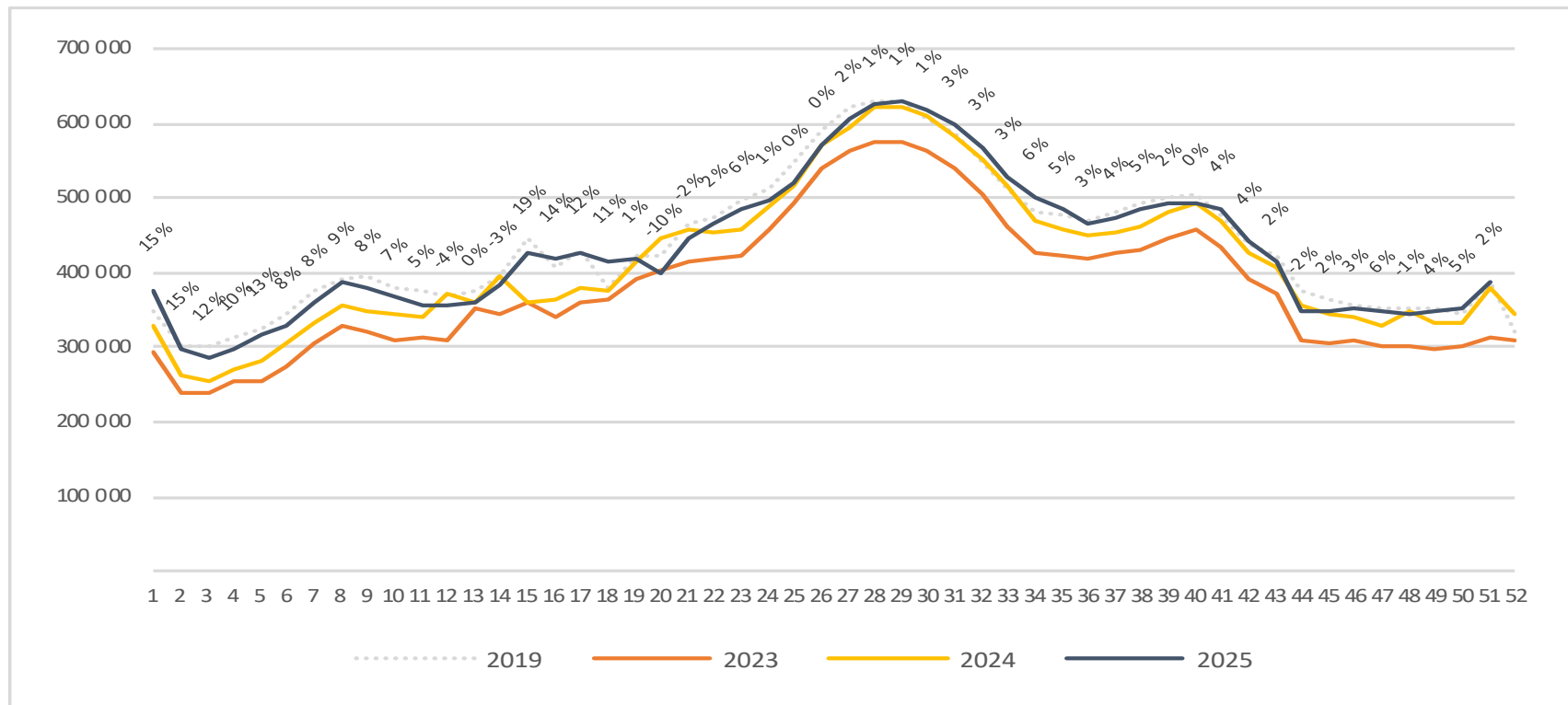
Passengers Avinor total per week

The change is measured against the same week last year



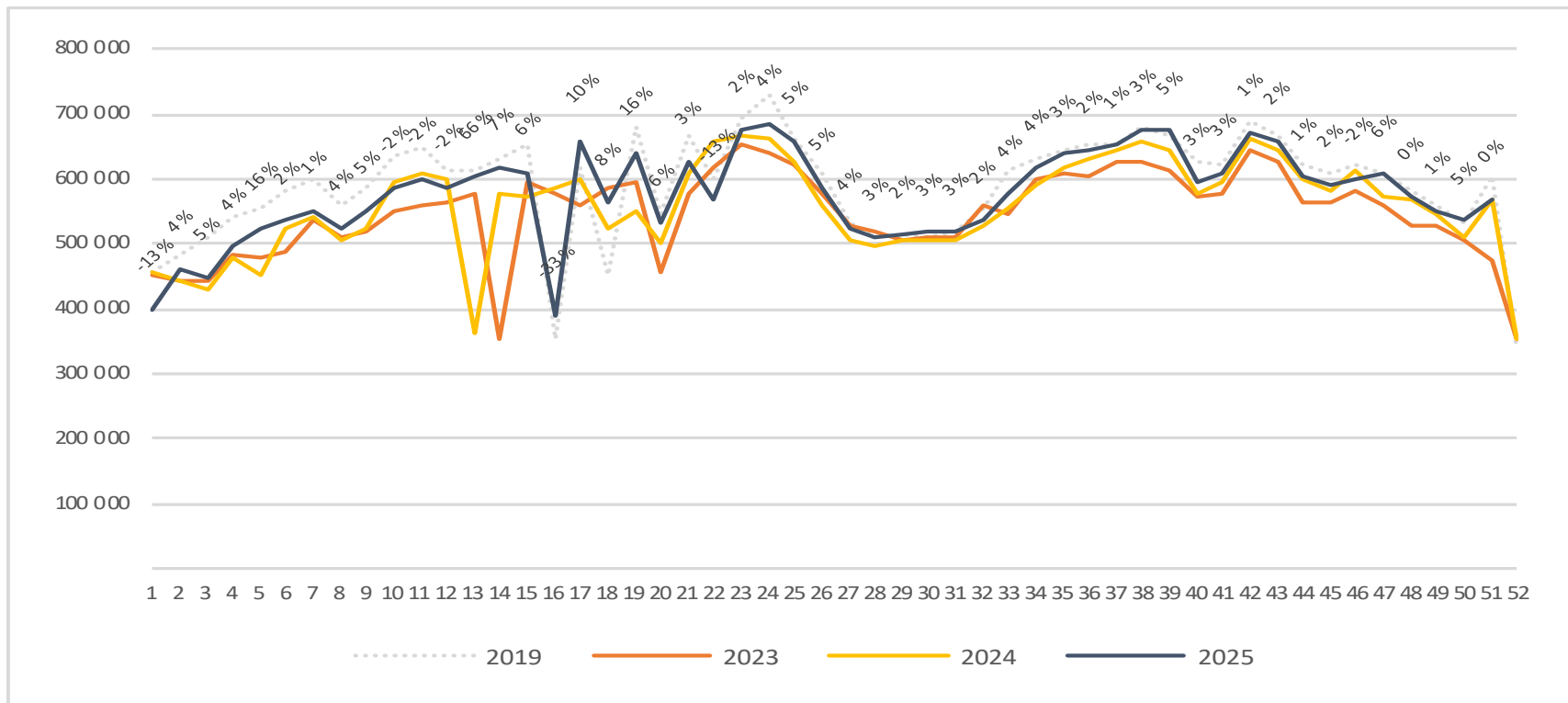
Passengers Avinor international per week

The change is measured against the same week last year



Passengers Avinor domestic per week

The change is measured against the same week last year

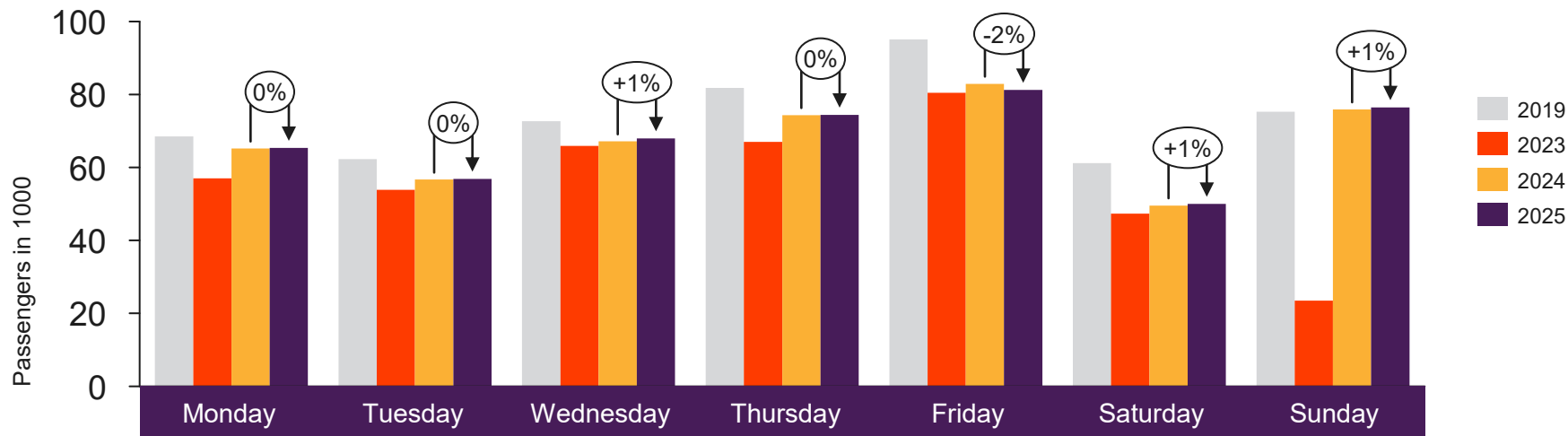




[Return to content page](#)

Selected airports

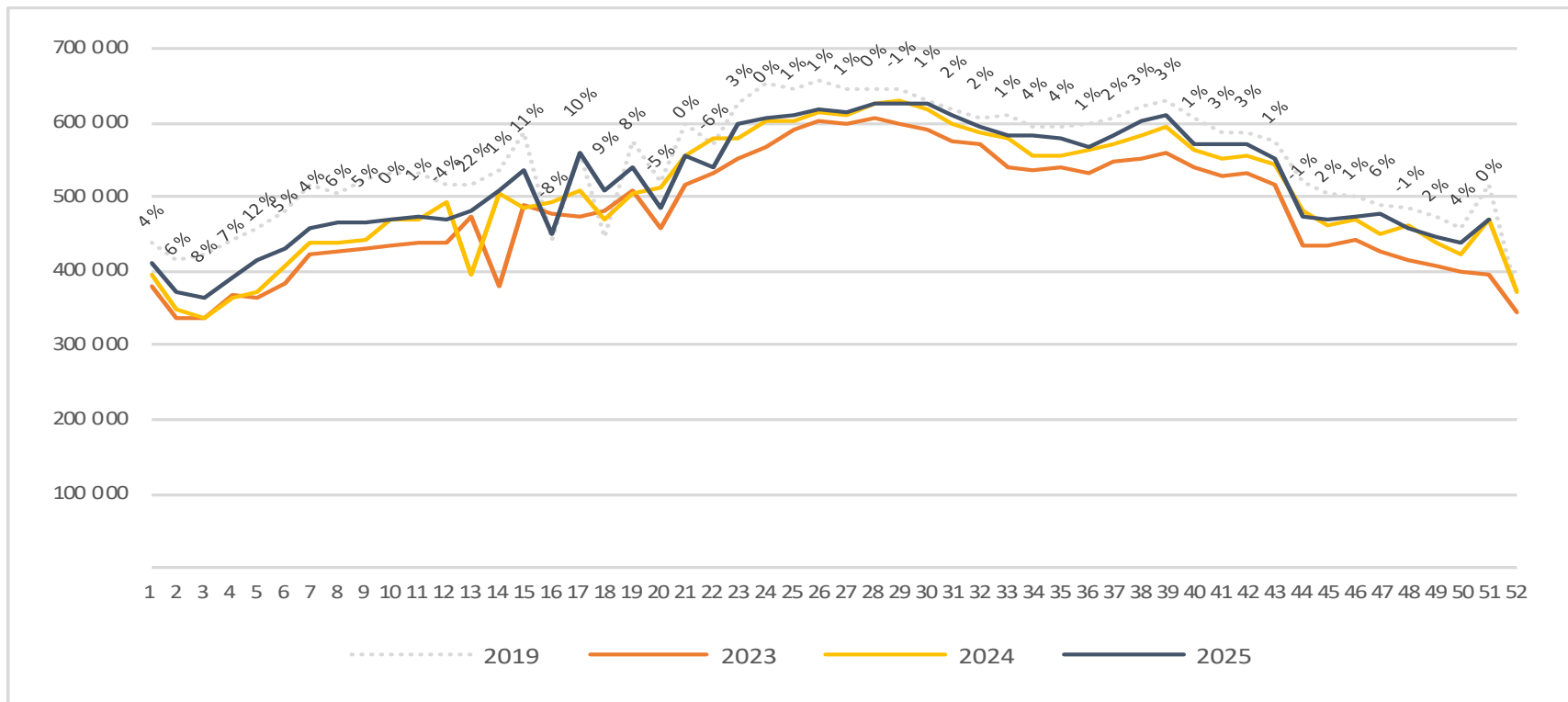
Passengers OSL total per day week 51



2019	68 476	62 294	72 650	81 775	95 099	61 163	75 283
2023	57 013	53 900	65 882	67 004	80 429	47 371	23 515
2024	65 196	56 674	67 148	74 358	82 940	49 557	75 933
2025	65 320	56 876	67 980	74 410	81 270	50 022	76 447

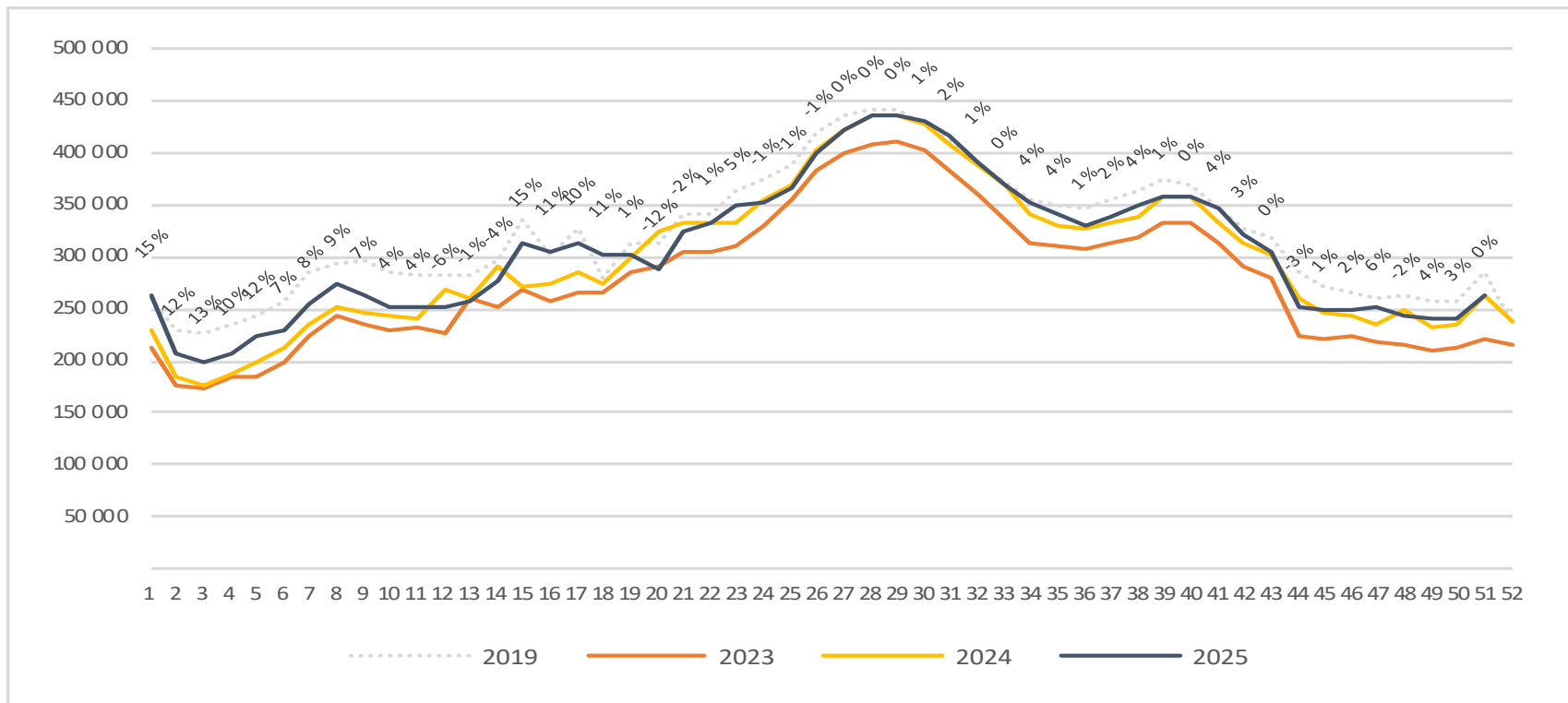
Passengers OSL total per week

The change is measured against the same week last year



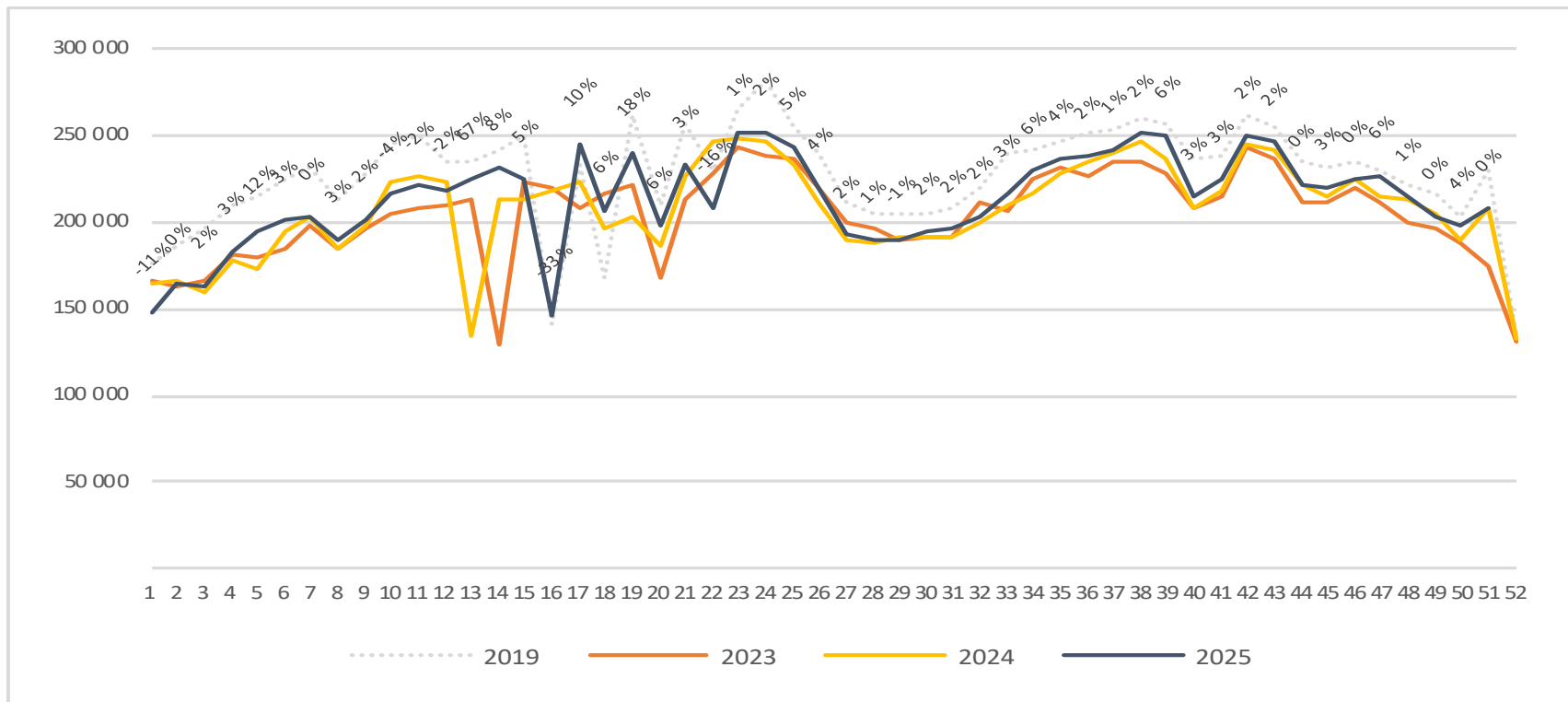
Passengers OSL international per week

The change is measured against the same week last year

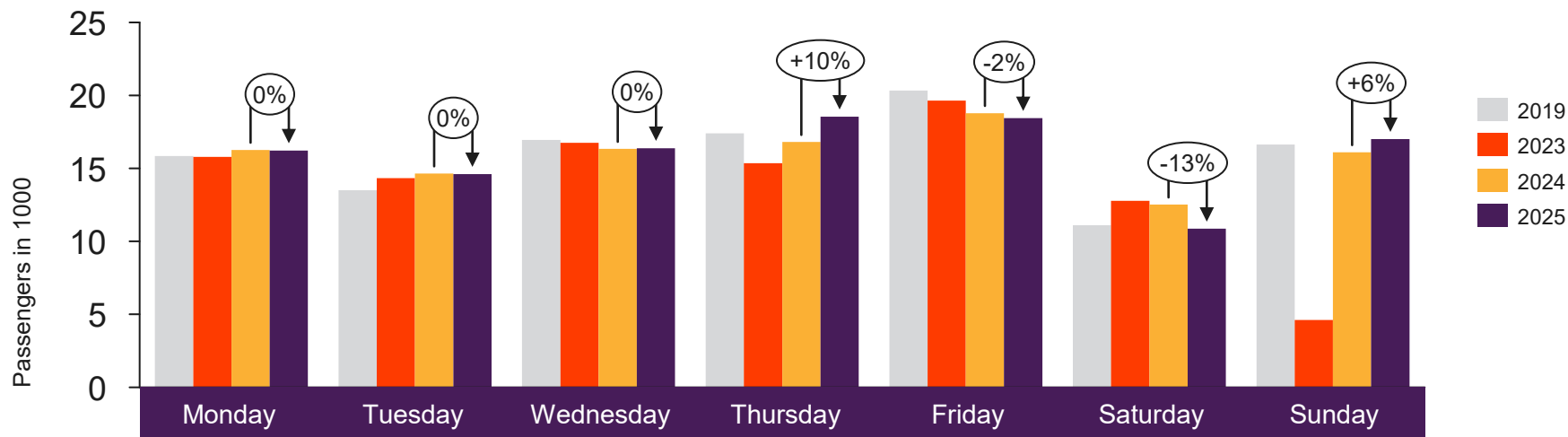


Passengers OSL domestic per week

The change is measured against the same week last year



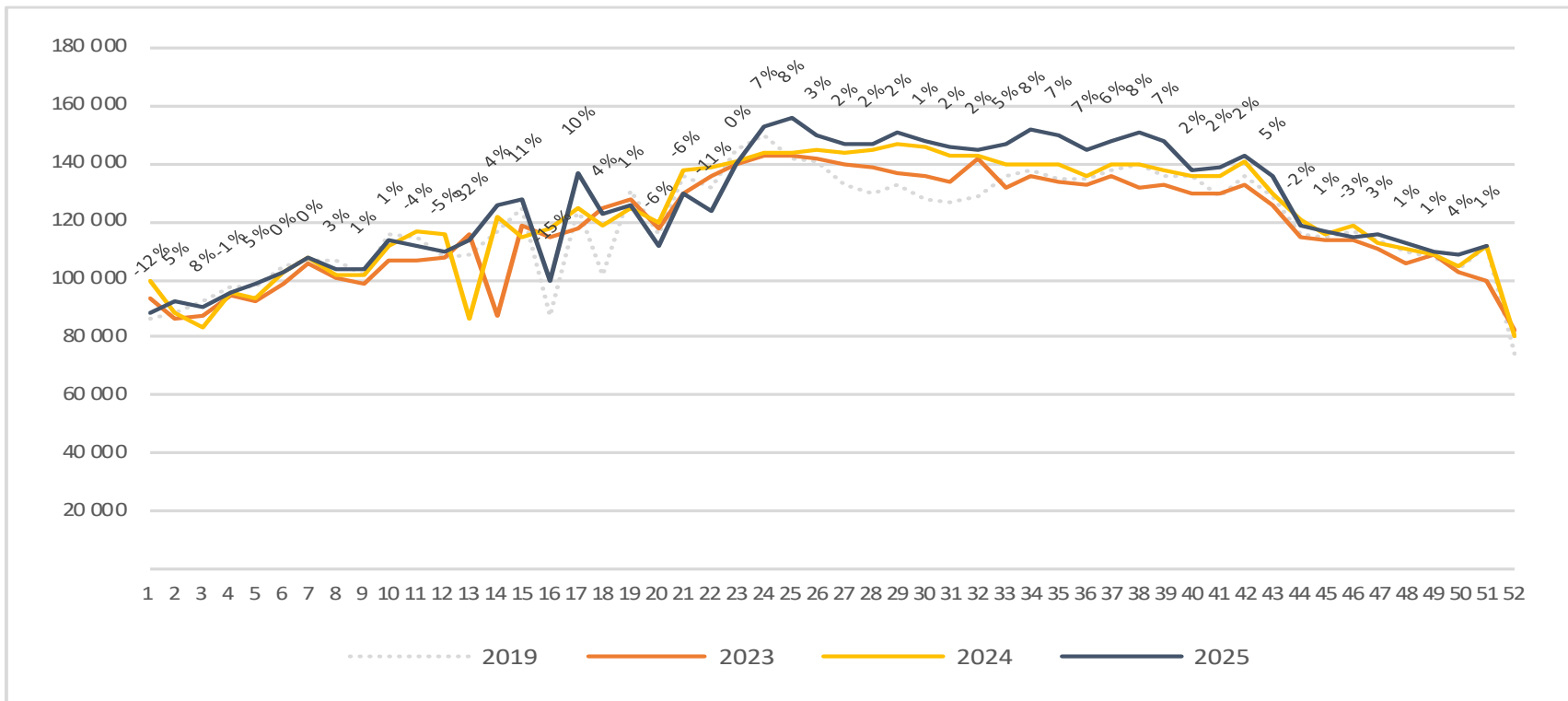
Passengers BGO total per day week 51



	Monday	Tuesday	Wednesday	Thursday	Friday	Saturday	Sunday
2019	15 839	13 507	16 941	17 394	20 327	11 104	16 642
2023	15 797	14 337	16 752	15 348	19 646	12 772	4 618
2024	16 264	14 654	16 339	16 803	18 784	12 522	16 100
2025	16 220	14 614	16 387	18 535	18 443	10 861	17 007

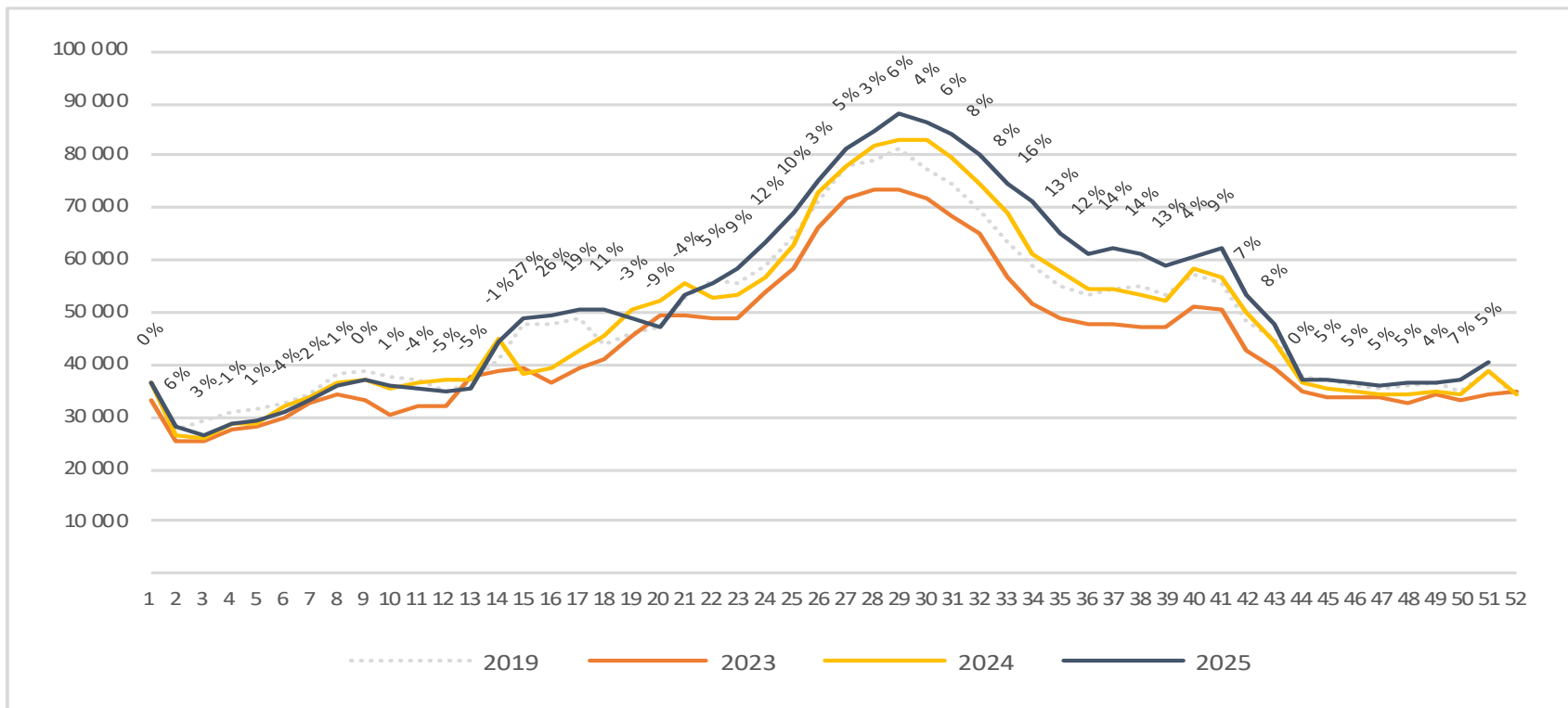
Passengers BGO total per week

The change is measured against the same week last year



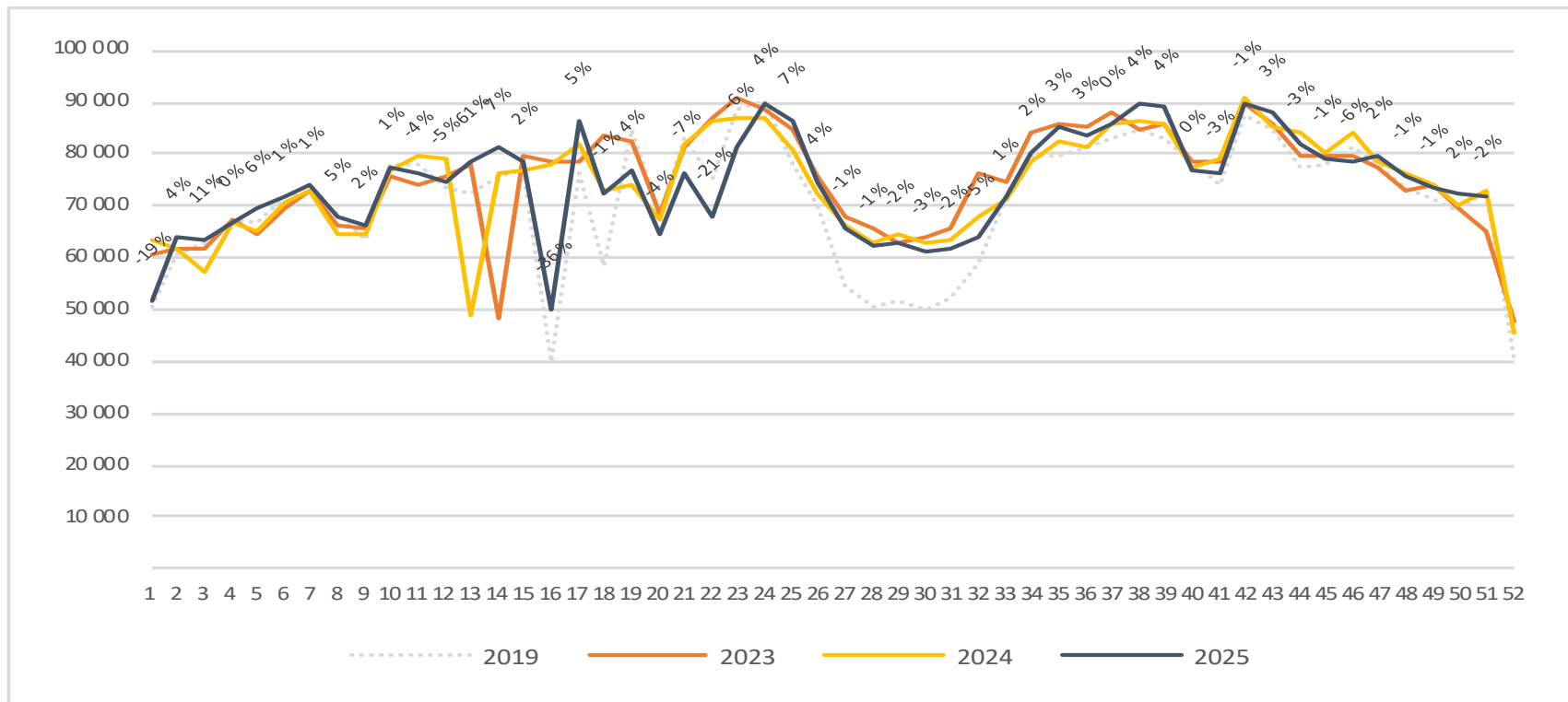
Passengers BGO international per week

The change is measured against the same week last year

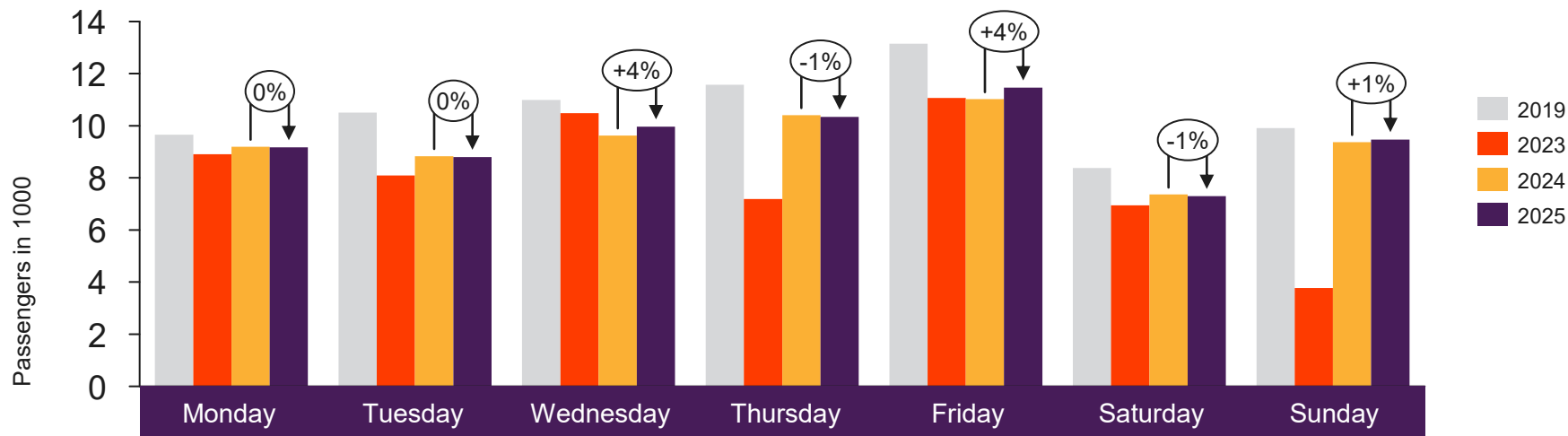


Passengers BGO domestic per week

The change is measured against the same week last year



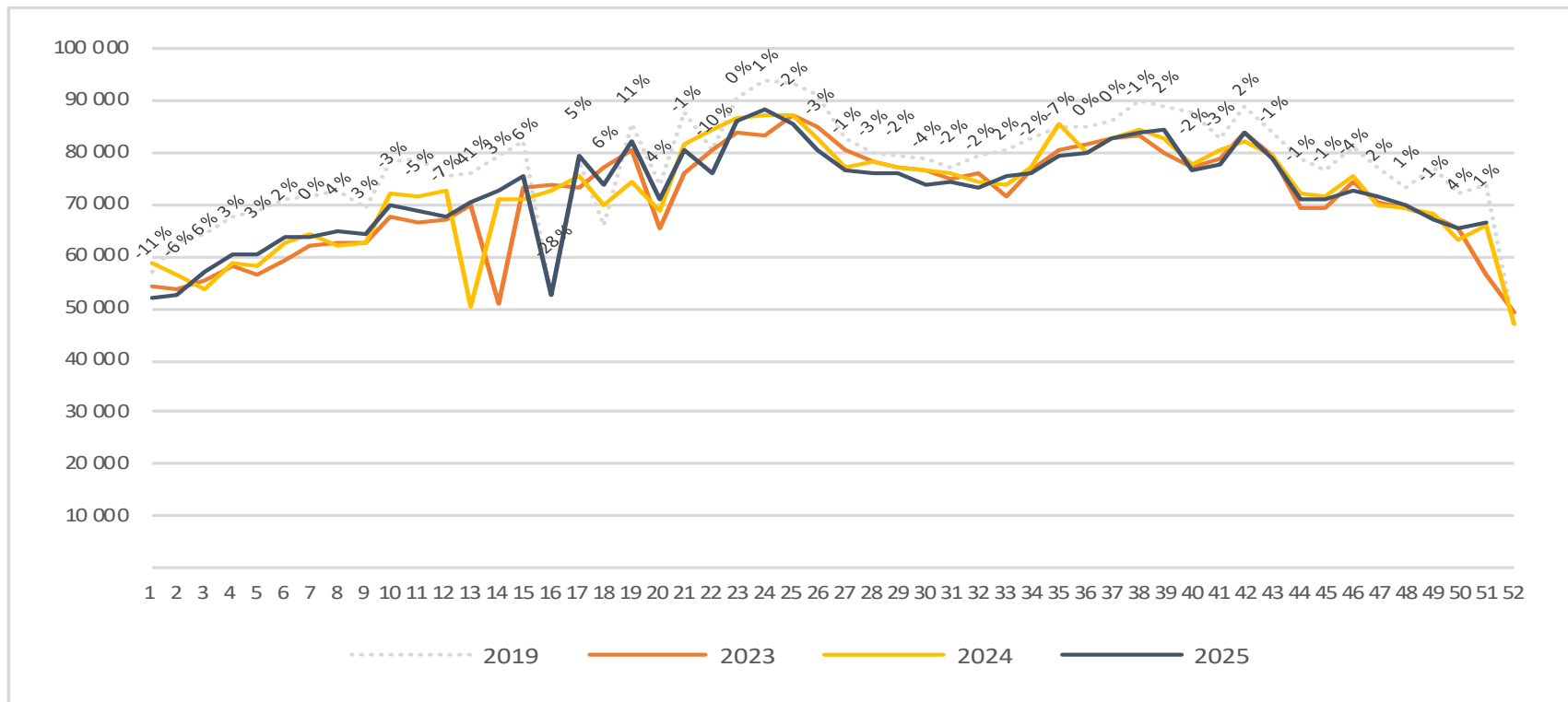
Passengers SVG total per day week 51



2019	9 659	10 505	10 985	11 572	13 147	8 379	9 913
2023	8 910	8 094	10 488	7 192	11 066	6 950	3 772
2024	9 191	8 835	9 629	10 411	11 020	7 361	9 374
2025	9 174	8 798	9 968	10 341	11 466	7 295	9 474

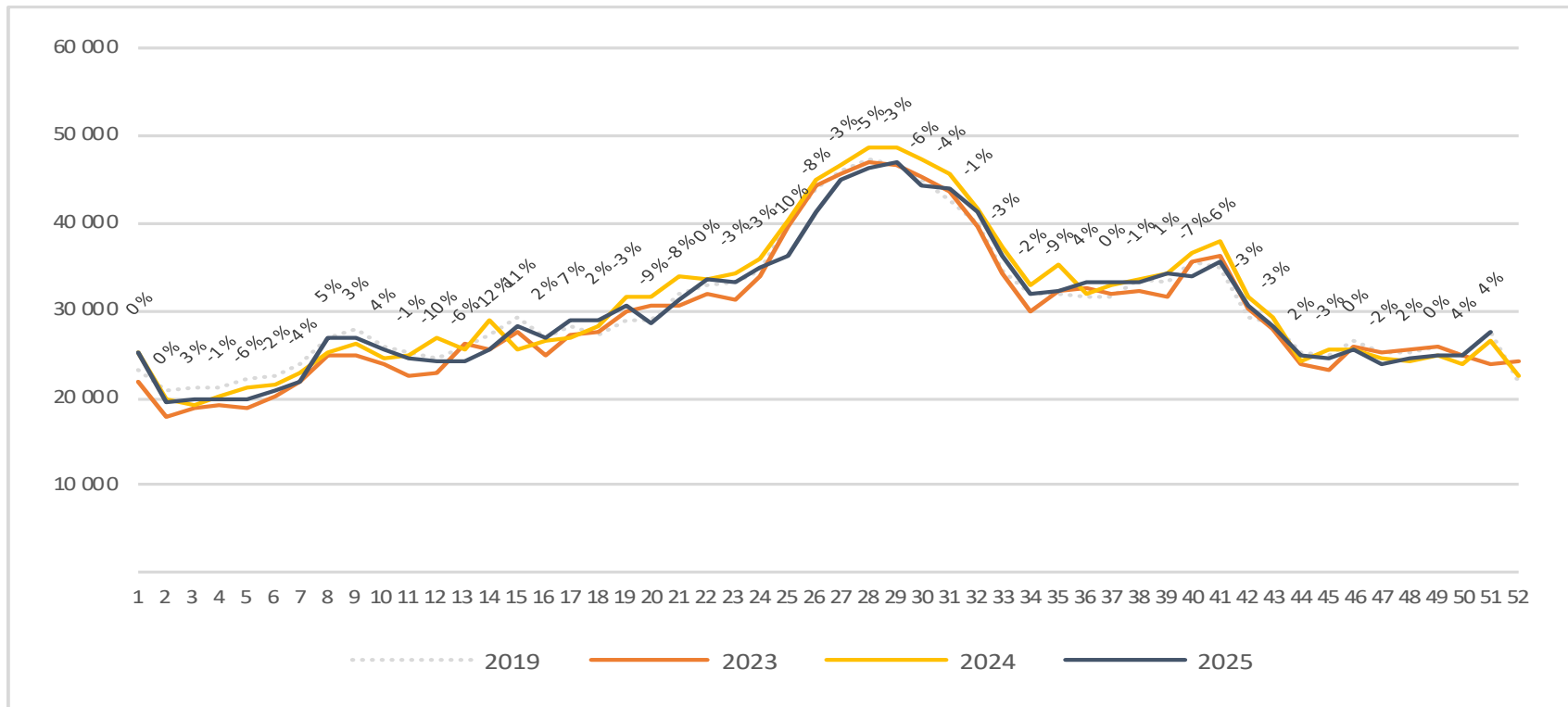
Passengers SVG total per week

The change is measured against the same week last year



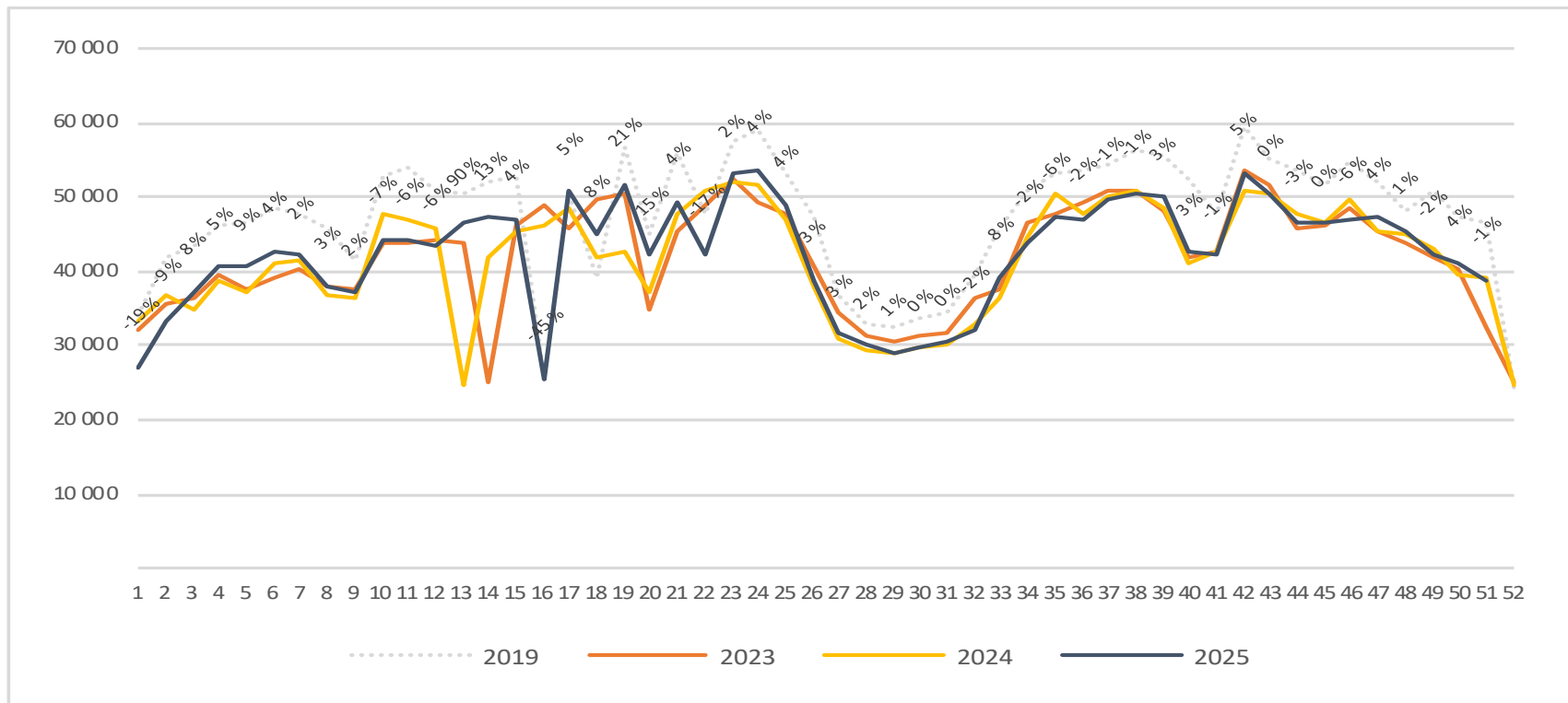
Passengers SVG international per week

The change is measured against the same week last year

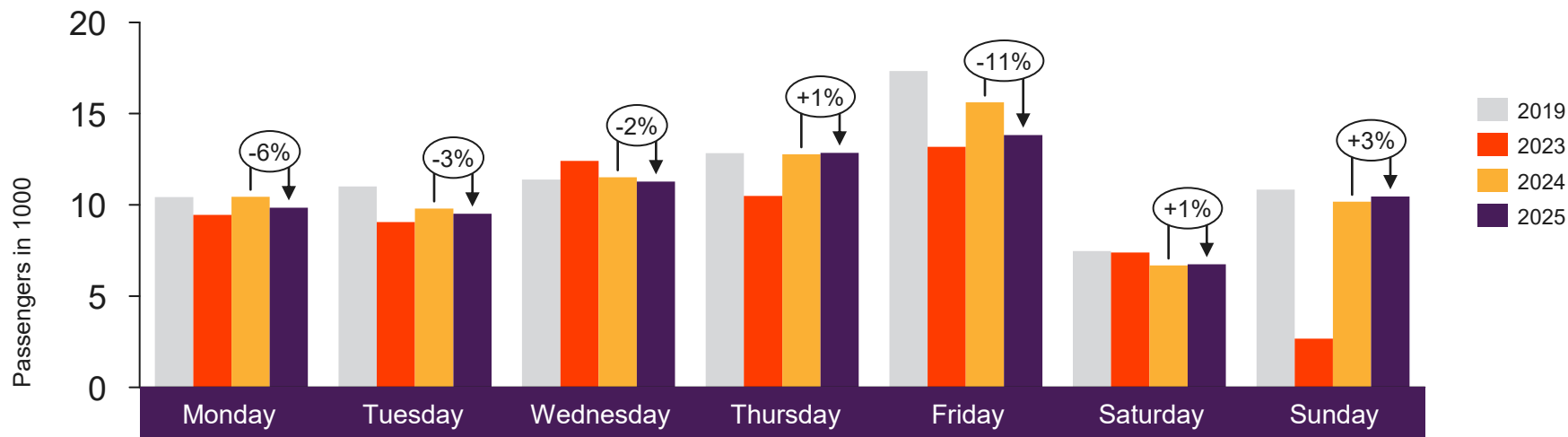


Passengers SVG domestic per week

The change is measured against the same week last year



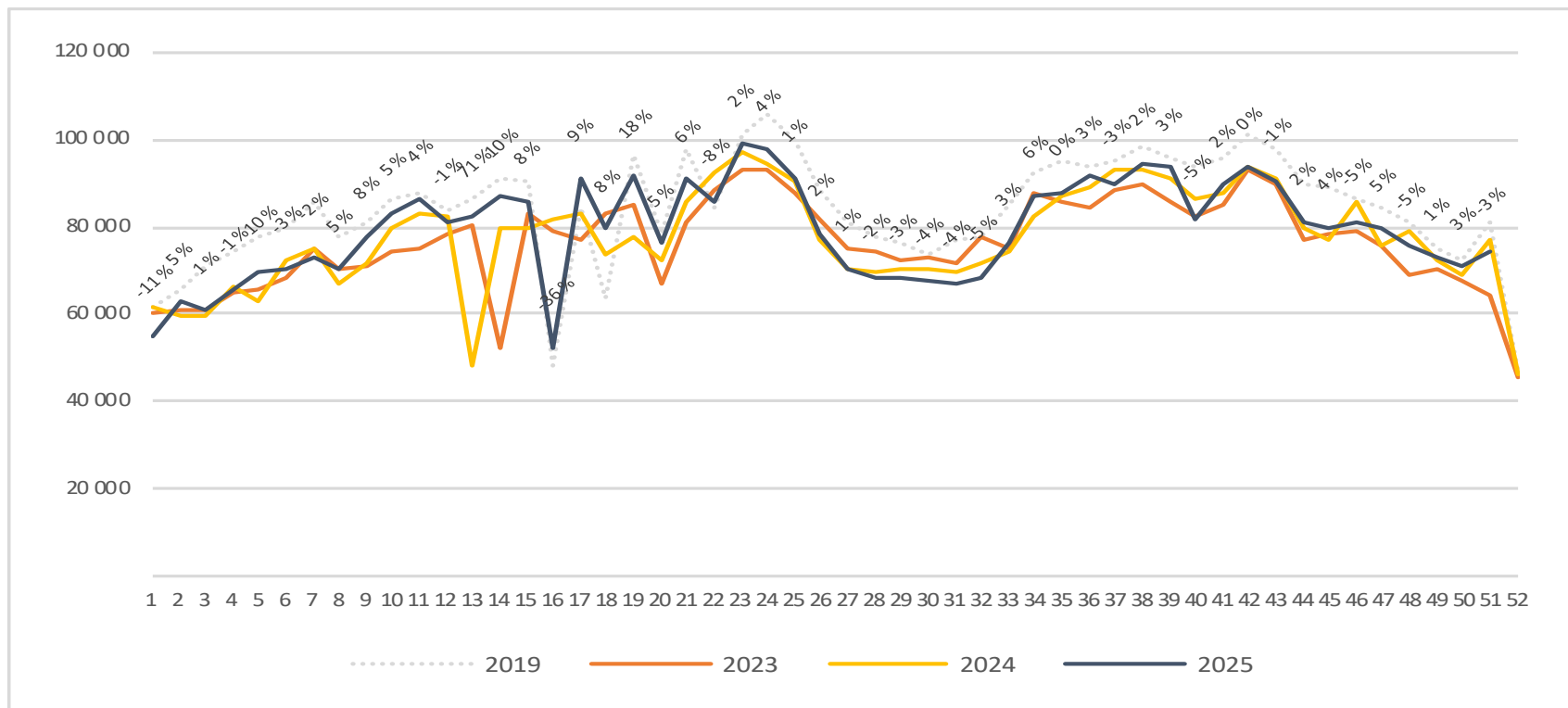
Passengers TRD total per day week 51



2019	10 424	11 009	11 383	12 840	17 342	7 475	10 841
2023	9 445	9 060	12 406	10 488	13 180	7 388	2 673
2024	10 436	9 798	11 516	12 767	15 614	6 679	10 172
2025	9 853	9 515	11 283	12 848	13 833	6 745	10 454

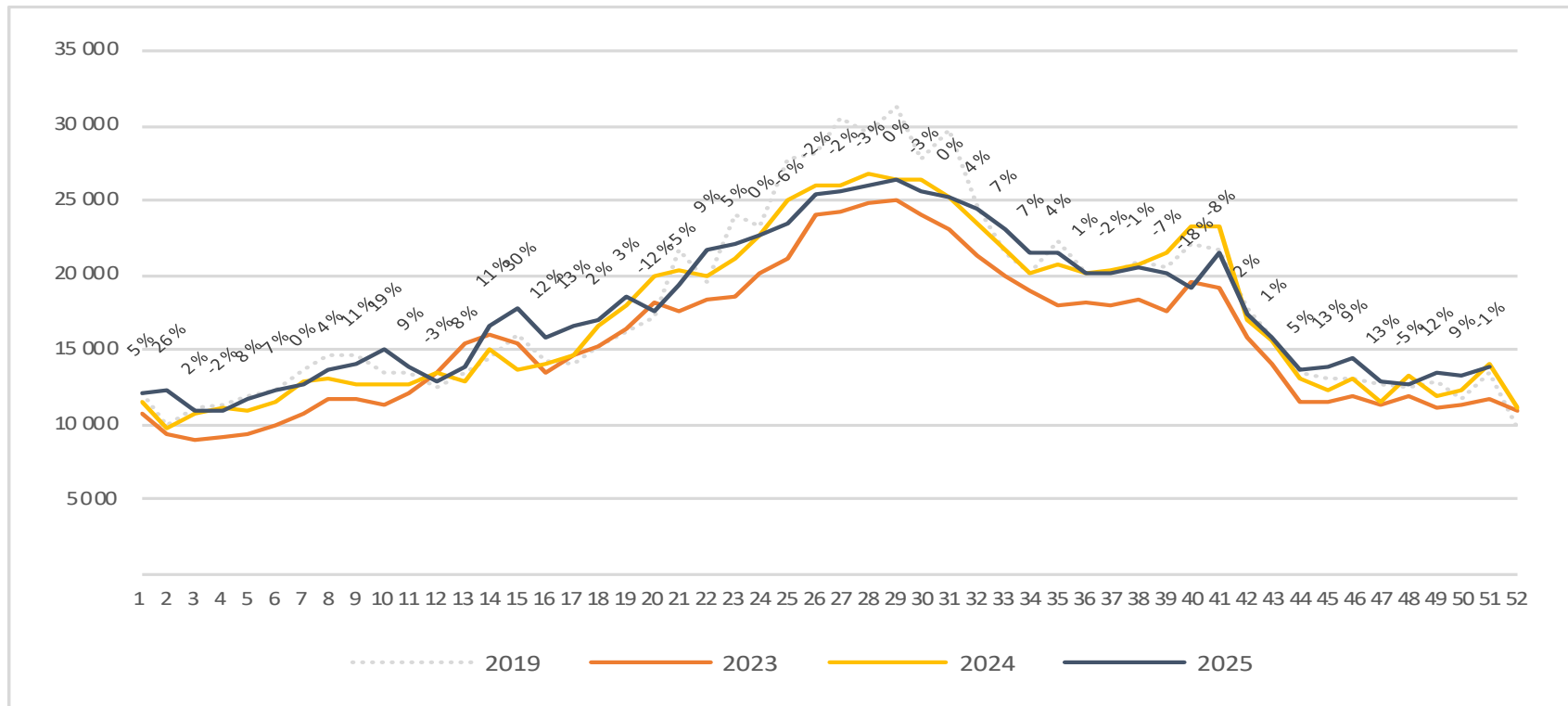
Passengers TRD total per week

The change is measured against the same week last year



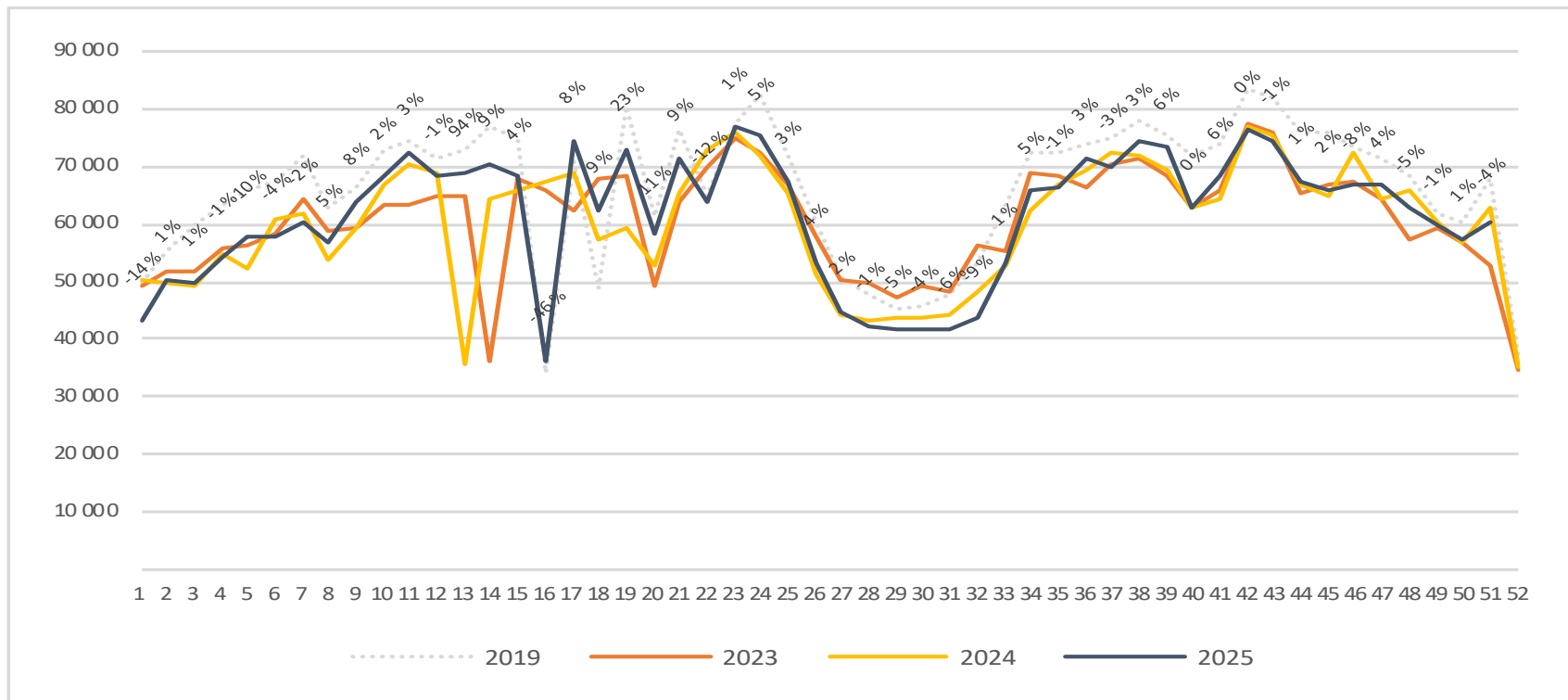
Passengers TRD international per week

The change is measured against the same week last year

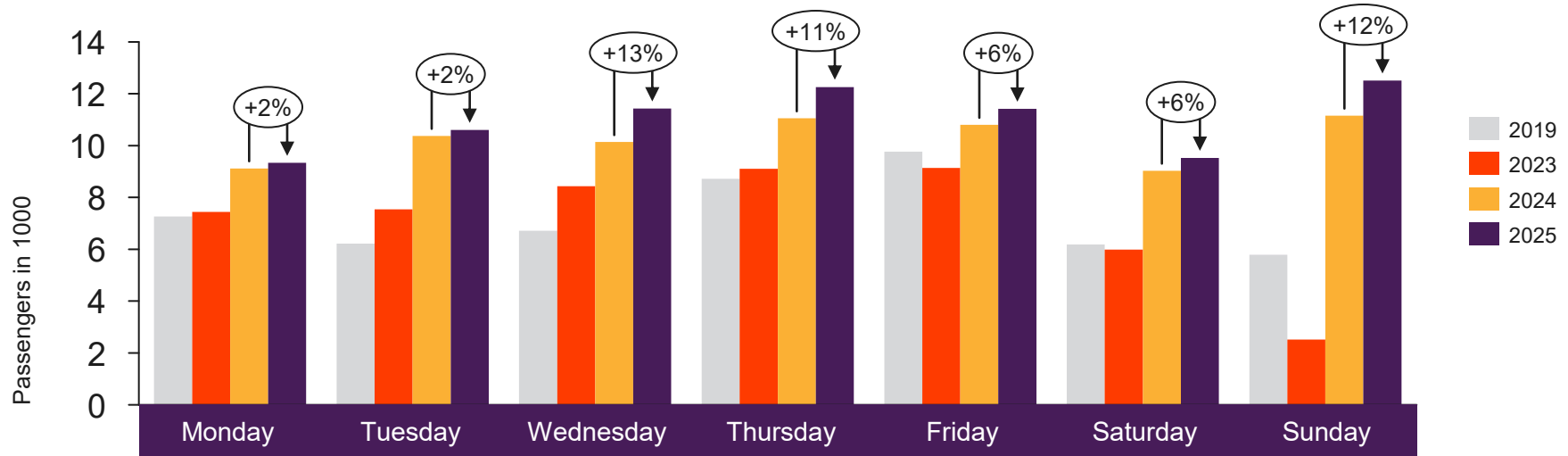


Passengers TRD domestic per week

The change is measured against the same week last year



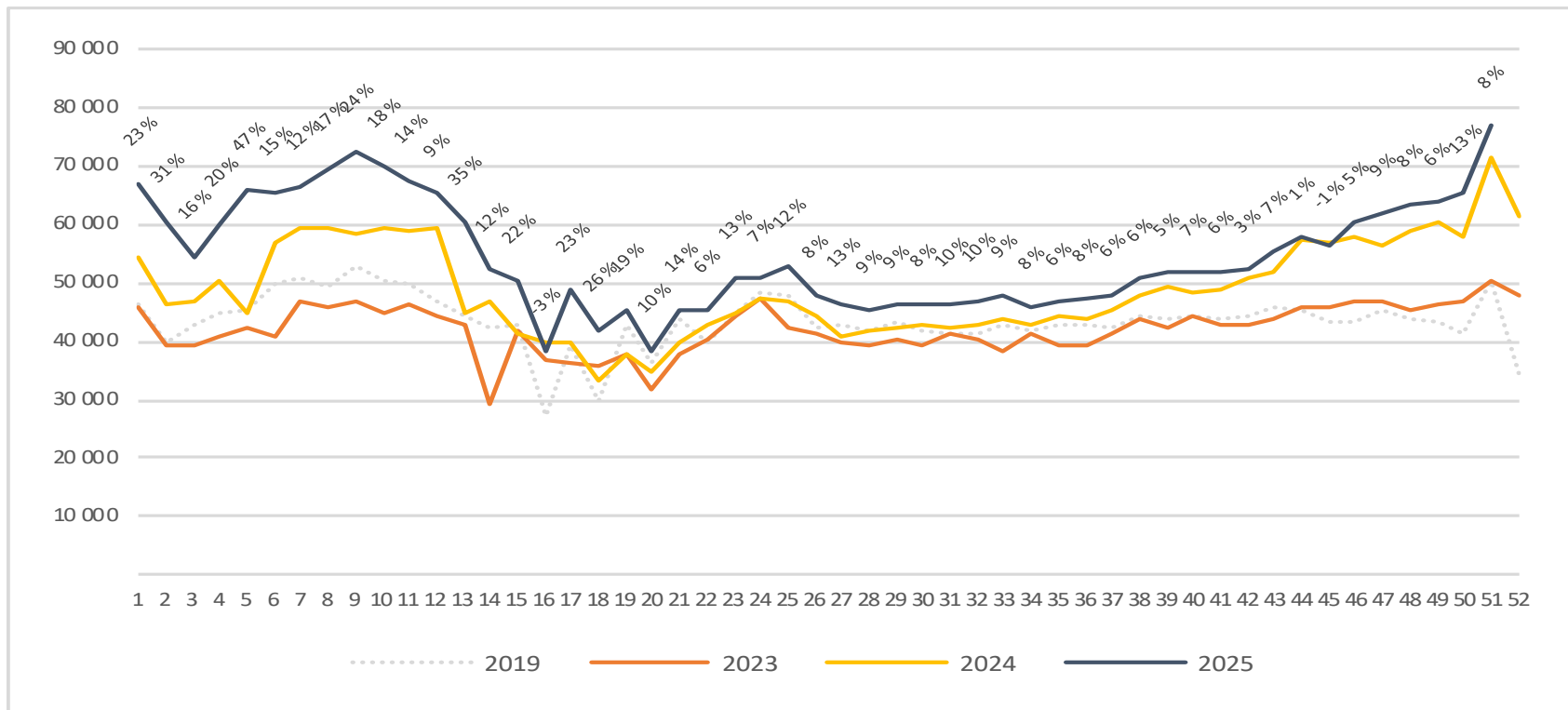
Passengers TOS total per day week 51



	Monday	Tuesday	Wednesday	Thursday	Friday	Saturday	Sunday
2019	7 268	6 216	6 715	8 719	9 765	6 189	5 786
2023	7 447	7 542	8 430	9 102	9 143	5 987	2 519
2024	9 118	10 377	10 138	11 056	10 804	9 029	11 156
2025	9 333	10 599	11 434	12 262	11 414	9 530	12 511

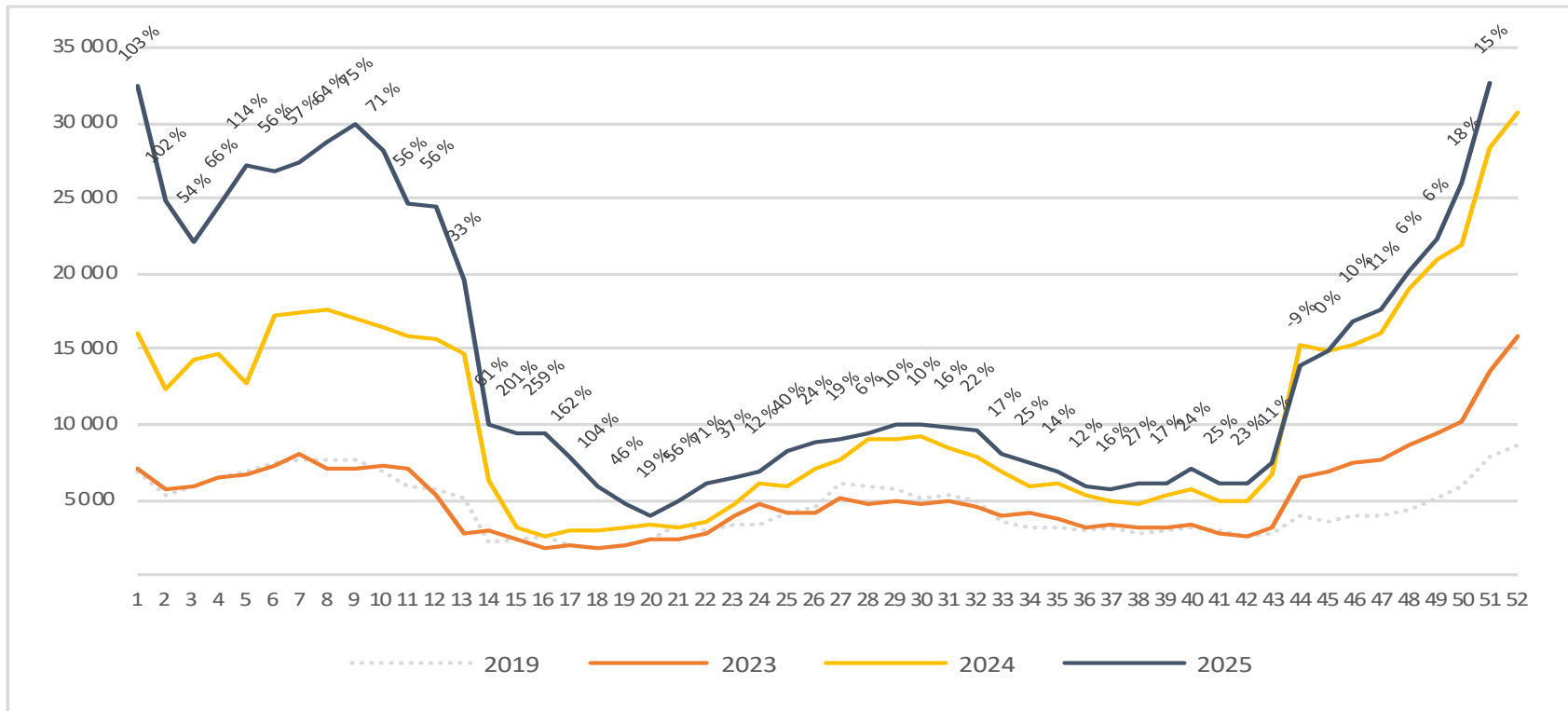
Passengers TOS total per week

The change is measured against the same week last year



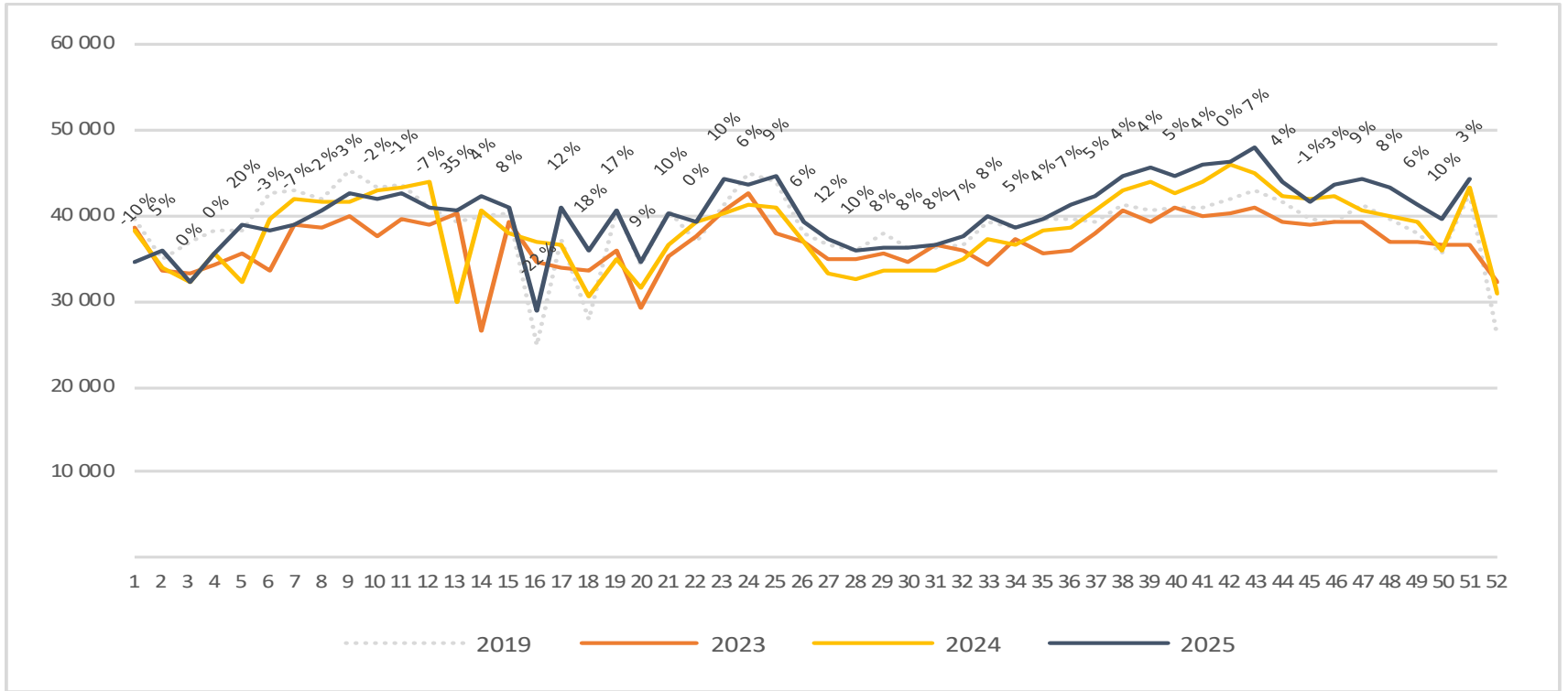
Passengers TOS international per week

The change is measured against the same week last year



Passengers TOS domestic per week

The change is measured against the same week last year



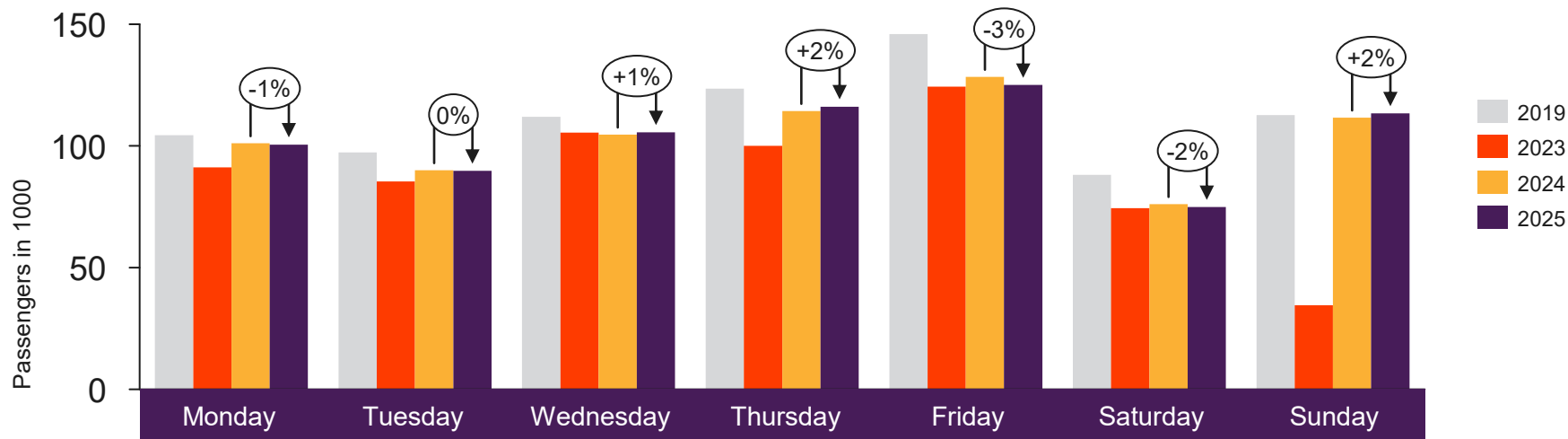


[Return to content
page](#)

Top 4 airports

Total passenger numbers from Oslo, Bergen, Stavanger and Trondheim

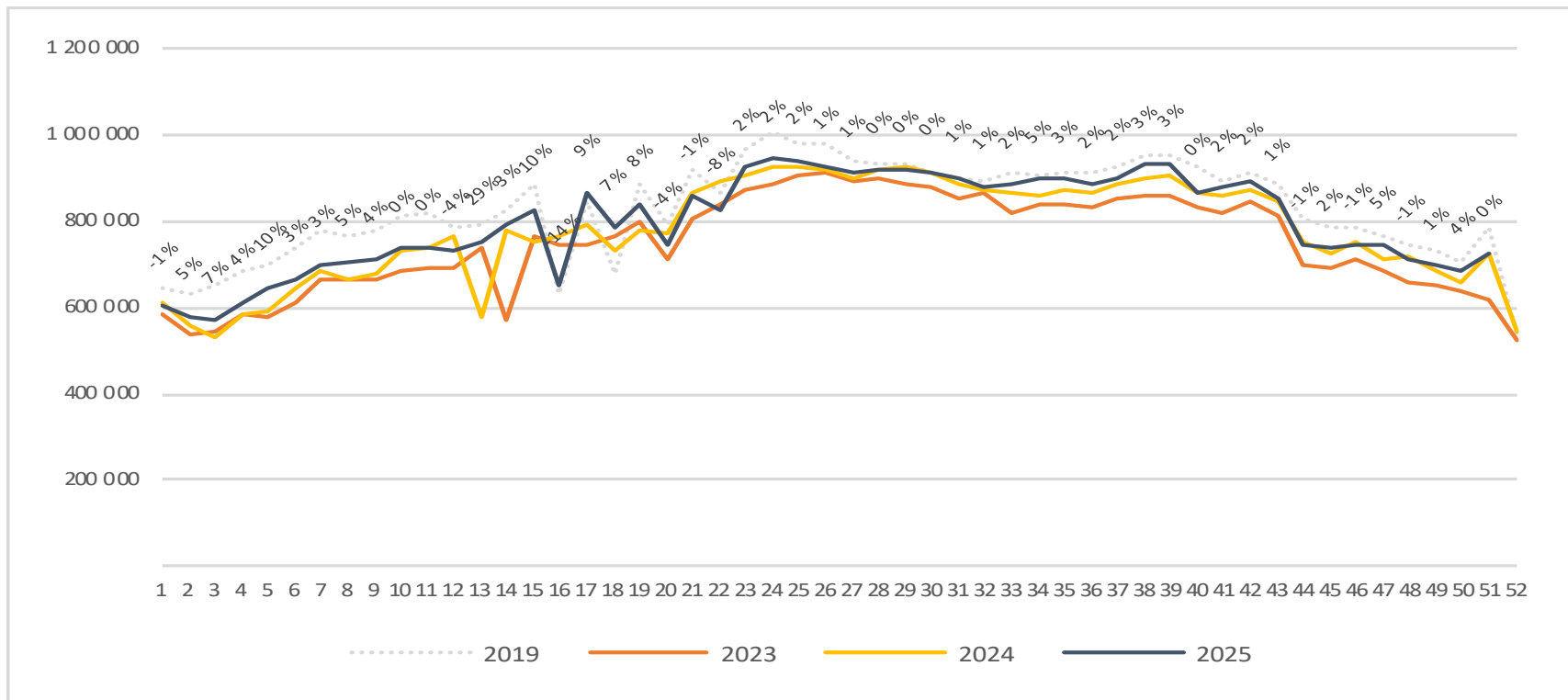
Passengers top 4 airports total per day week 51



2019	104 398	97 315	111 959	123 581	145 915	88 121	112 679
2023	91 165	85 391	105 528	100 032	124 321	74 481	34 578
2024	101 087	89 961	104 632	114 339	128 358	76 119	111 579
2025	100 567	89 803	105 618	116 134	125 012	74 923	113 382

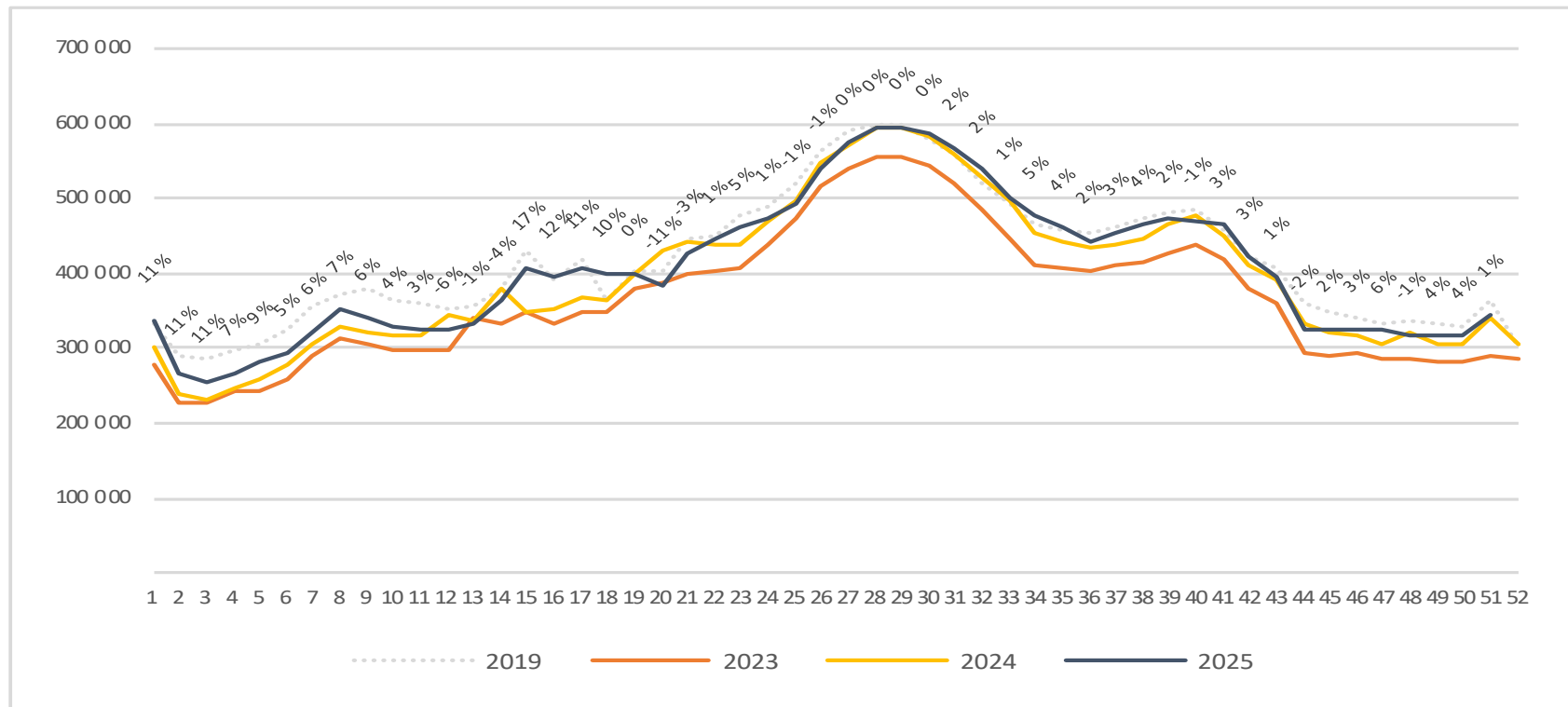
Passengers top 4 airports total per week

The change is measured against the same week last year



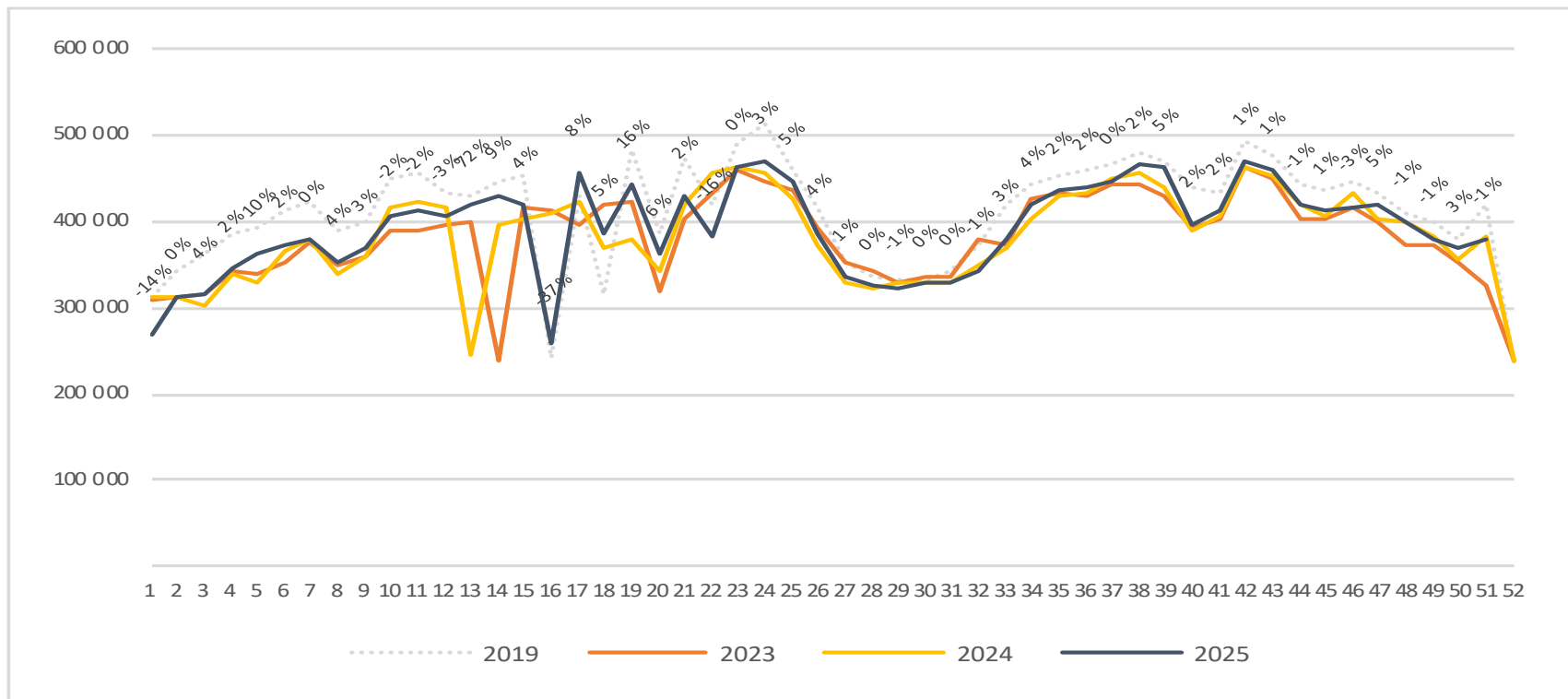
Passengers top 4 airports international per week

The change is measured against the same week last year



Passengers top 4 airports domestic per week

The change is measured against the same week last year



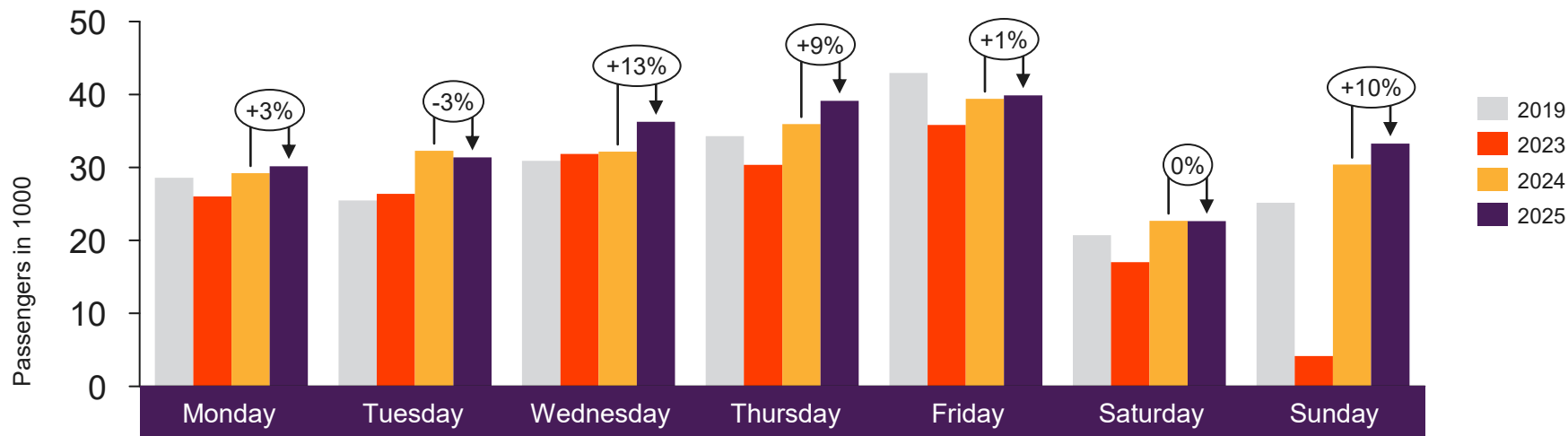


[Return to content page](#)

Regional and local airports

Total passenger numbers from Alta, Andenes, Bardufoss, Berlevåg, Bodø, Brønnøysund, Båtsfjord, Florø, Førde, Hammerfest, Harstad/Narvik, Hasvik, Honningsvåg, Kirkenes, Kristiansand, Kristiansund, Lakselv, Leknes, Mehamn, Mo i Rana, Molde, Mosjøen, Namsos, Røros, Rørvik, Røst, Sandane, Sandnessjøen, Sogndal, Stokmarknes, Svalbard, Svolvær, Sørkjosen, Tromsø, Vadsø, Vardø, Værøy, Ørsta-Volda and Ålesund

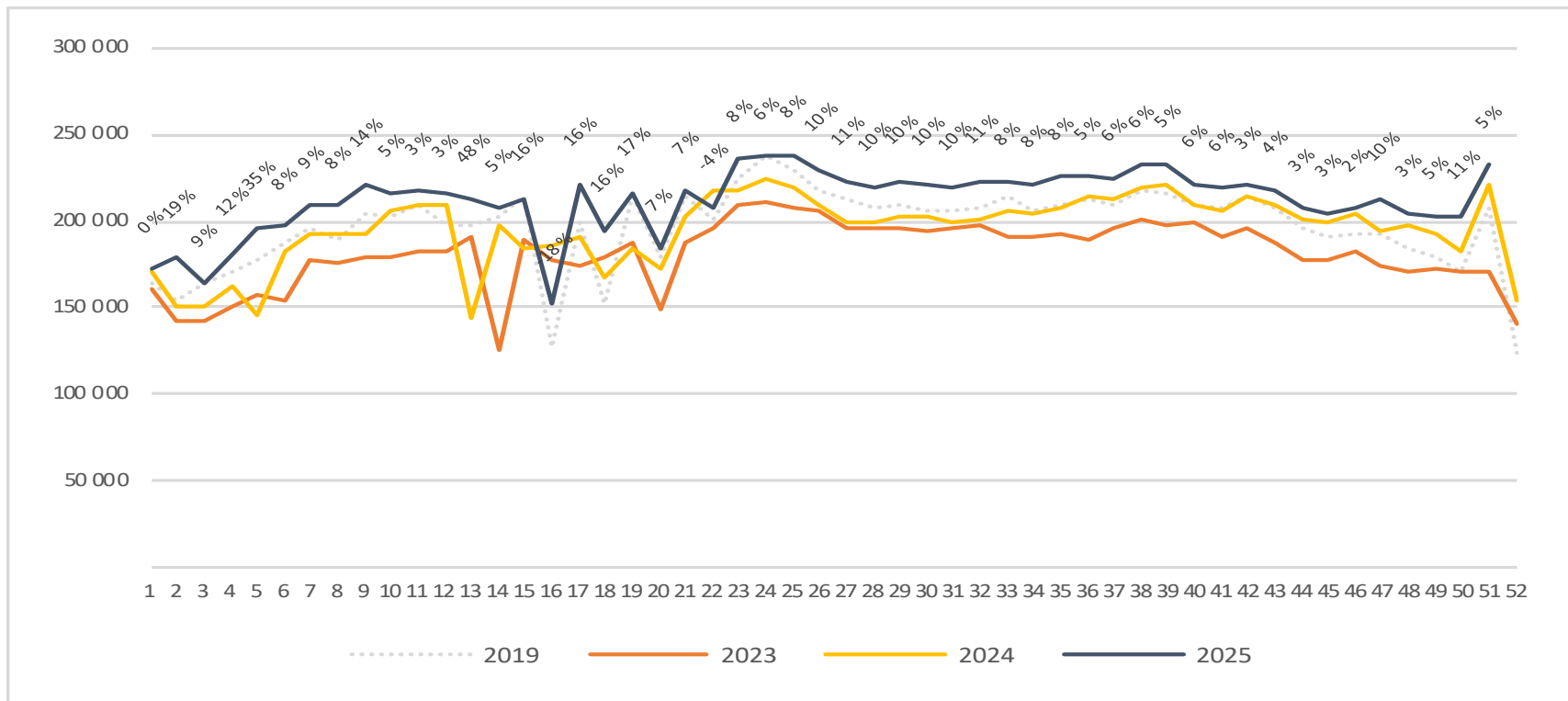
Passengers Regional and local airports total per day week 51



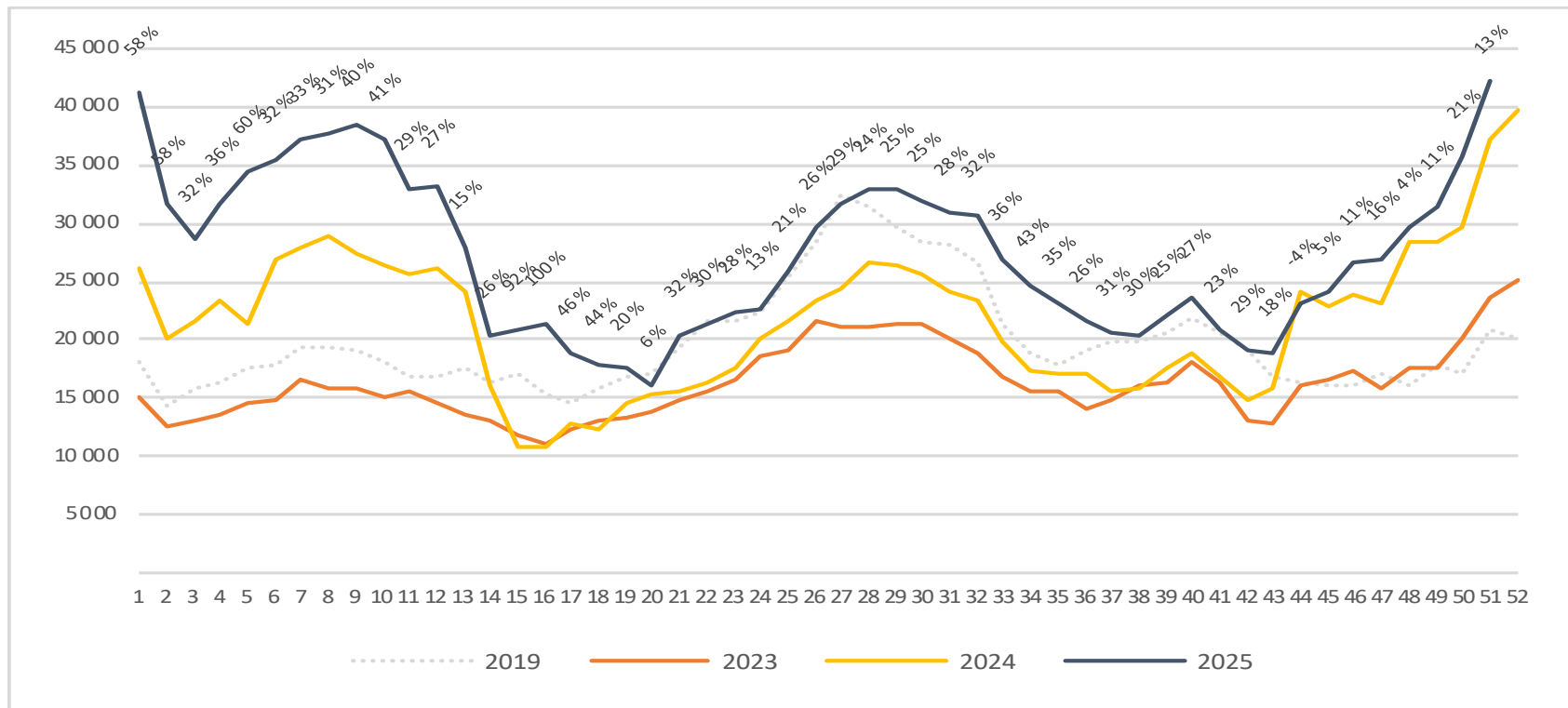
2019	28 572	25 481	30 905	34 299	42 935	20 703	25 152
2023	26 021	26 374	31 845	30 357	35 819	17 003	4 164
2024	29 206	32 281	32 171	35 928	39 414	22 696	30 384
2025	30 175	31 362	36 242	39 131	39 883	22 661	33 279

Passengers Regional and local airports total per week

The change is measured against the same week last year

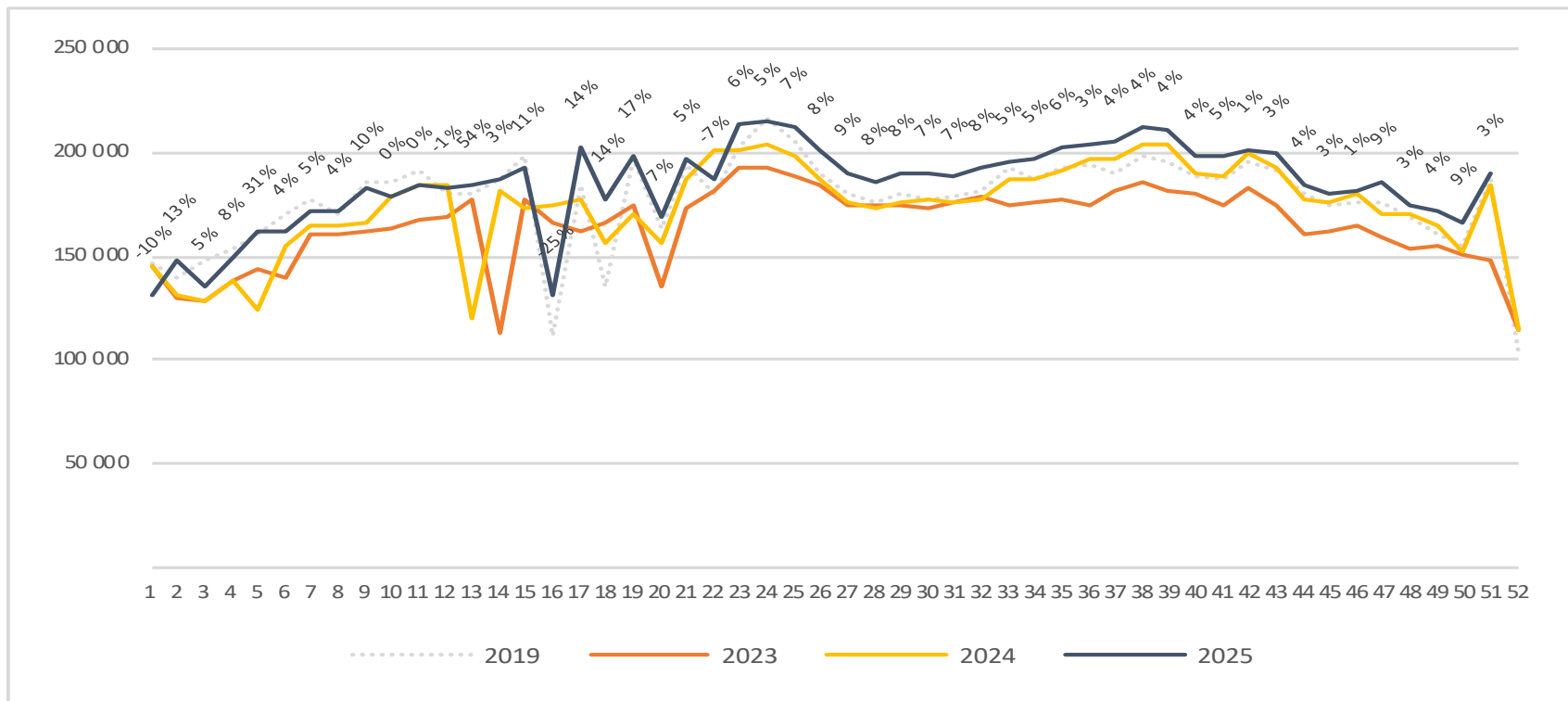


Passengers Regional and local airports international per week



Passengers Regional and local airports domestic per week

The change is measured against the same week last year



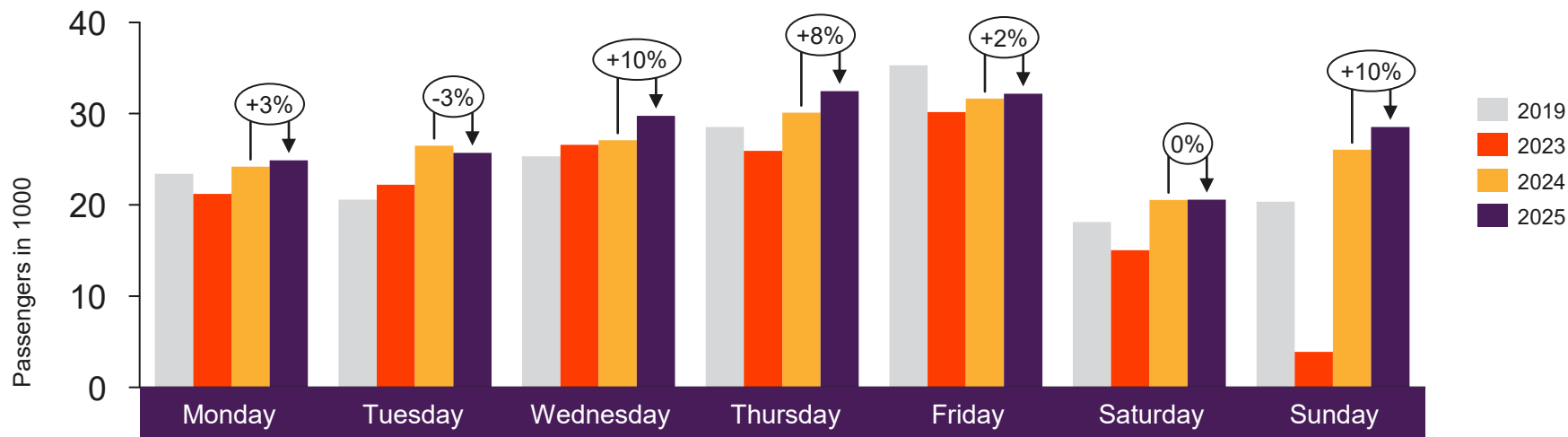


[Return to content
page](#)

Regional airports

Total passenger numbers from Alta, Bodø, Harstad/Narvik, Kirkenes, Kristiansand, Kristiansund, Molde, Svalbard, Tromsø and Ålesund

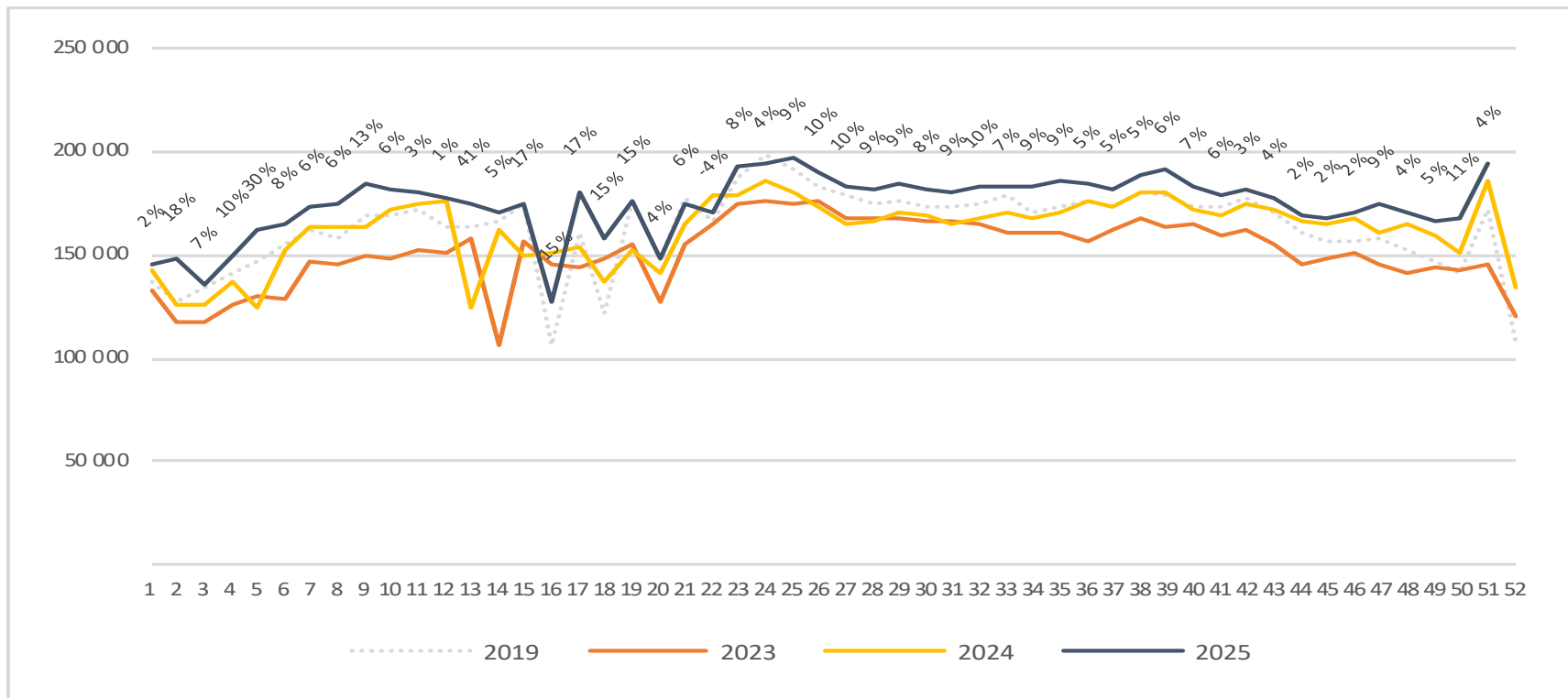
Passengers Regional airports total per day week 51



	Monday	Tuesday	Wednesday	Thursday	Friday	Saturday	Sunday
2019	23 415	20 580	25 321	28 537	35 294	18 129	20 353
2023	21 212	22 208	26 599	25 921	30 185	15 020	3 891
2024	24 201	26 481	27 077	30 109	31 646	20 541	26 043
2025	24 875	25 711	29 777	32 456	32 196	20 562	28 537

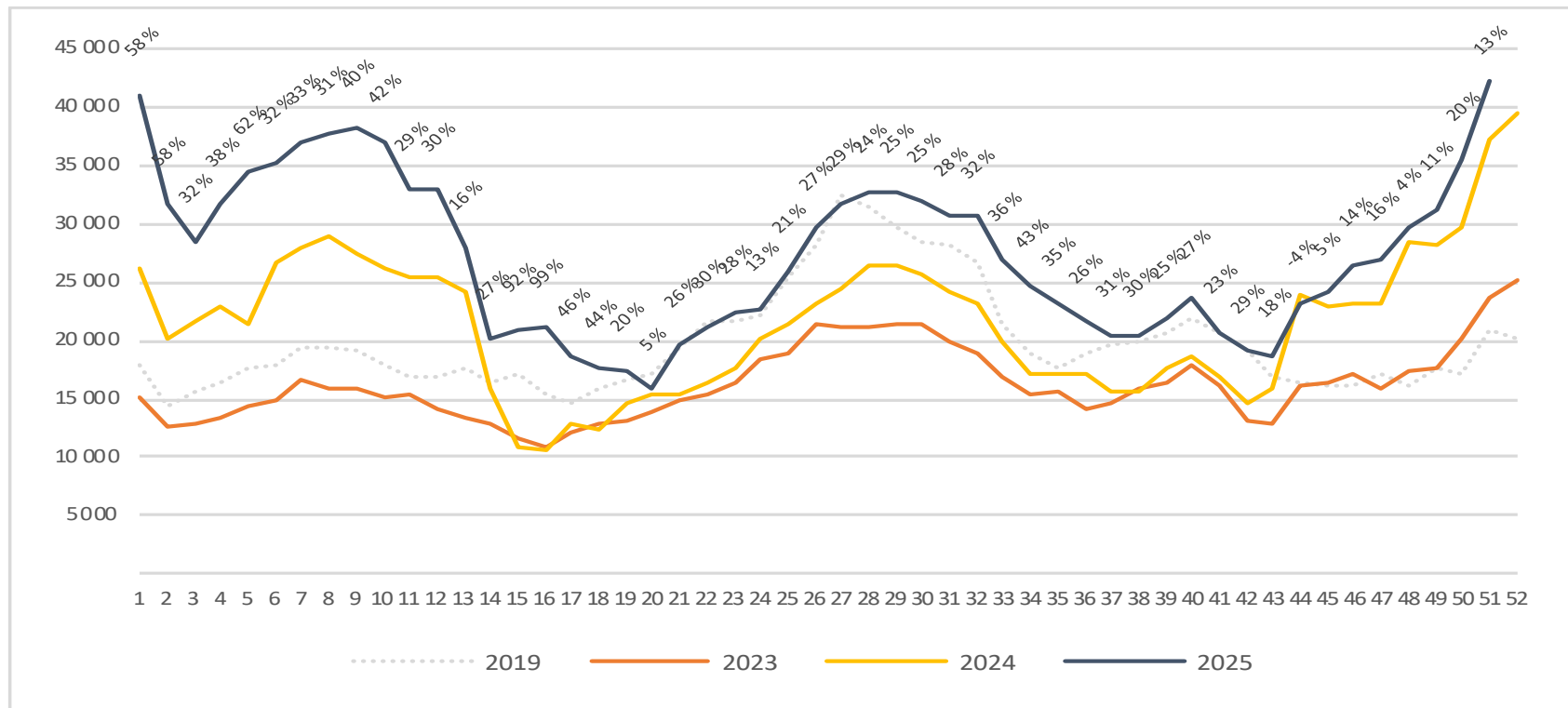
Passengers Regional airports total per week

The change is measured against the same week last year



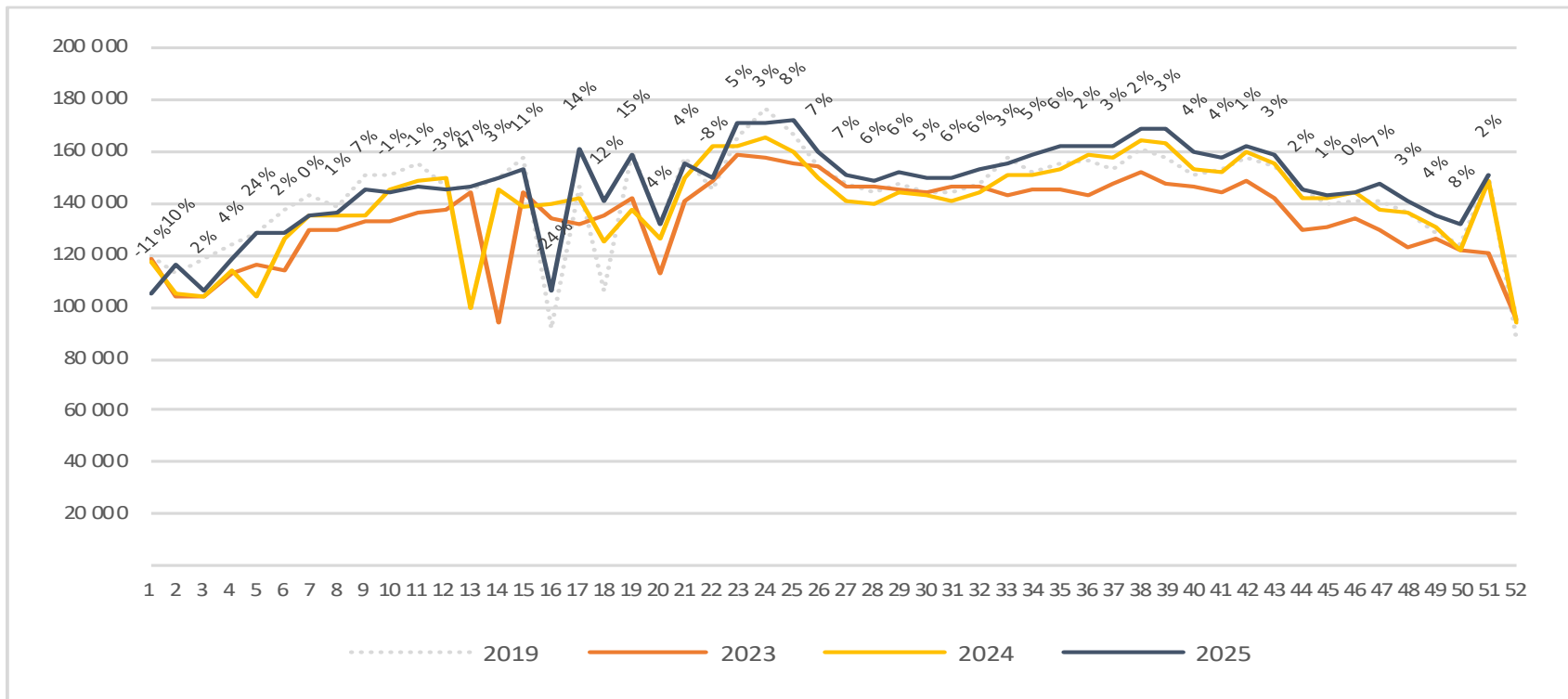
Passengers Regional airports international per week

The change is measured against the same week last year



Passengers Regional airports domestic per week

The change is measured against the same week last year



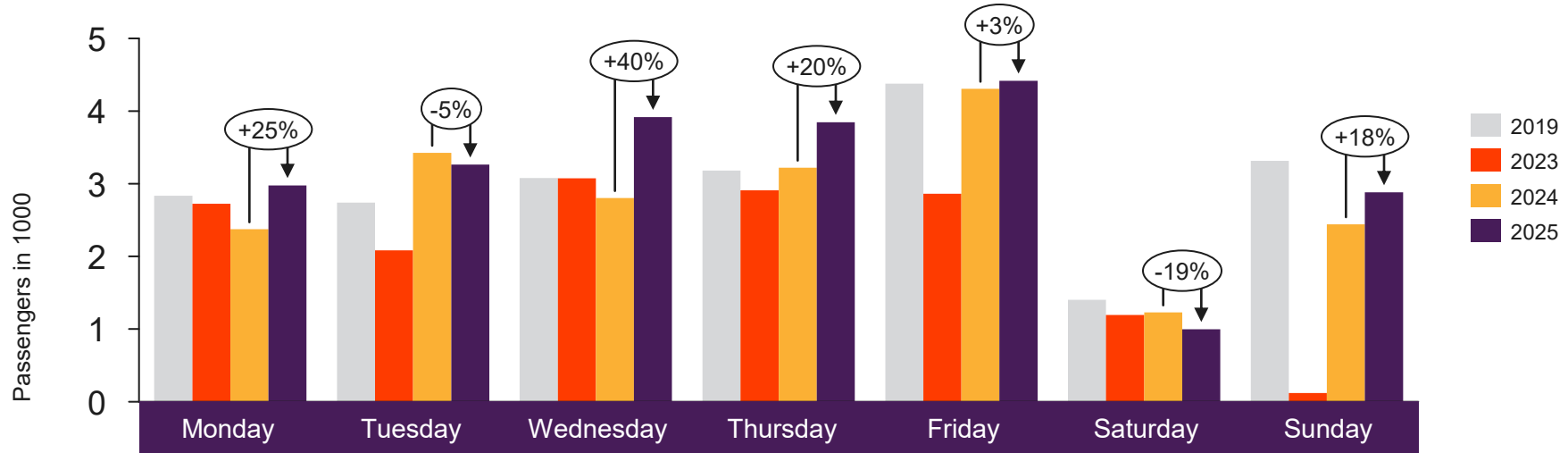


[Return to content
page](#)

Local Airports in Trøndelag and Nordland (Local Mid airports)

Total passenger numbers from Andenes, Bardufoss, Brønnøysund, Leknes, Mo i Rana, Mosjøen, Namsos, Rørvik, Røst, Sandnessjøen, Stokmarknes, Svolvær and Værøy

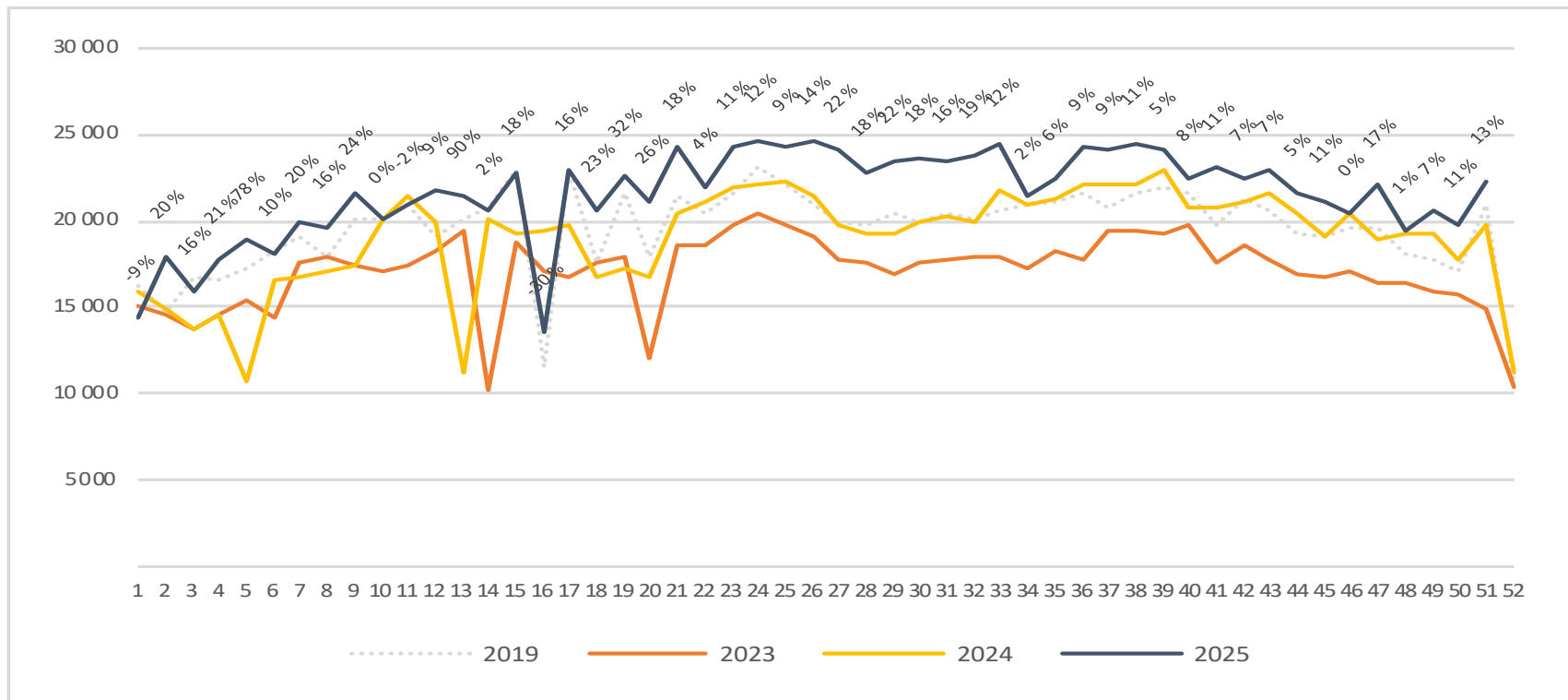
Passengers Local Mid airports total per day week 51



	Monday	Tuesday	Wednesday	Thursday	Friday	Saturday	Sunday
2019	2 834	2 739	3 079	3 181	4 379	1 404	3 315
2023	2 723	2 082	3 075	2 908	2 861	1 196	121
2024	2 375	3 427	2 802	3 220	4 308	1 228	2 441
2025	2 978	3 264	3 918	3 848	4 416	999	2 882

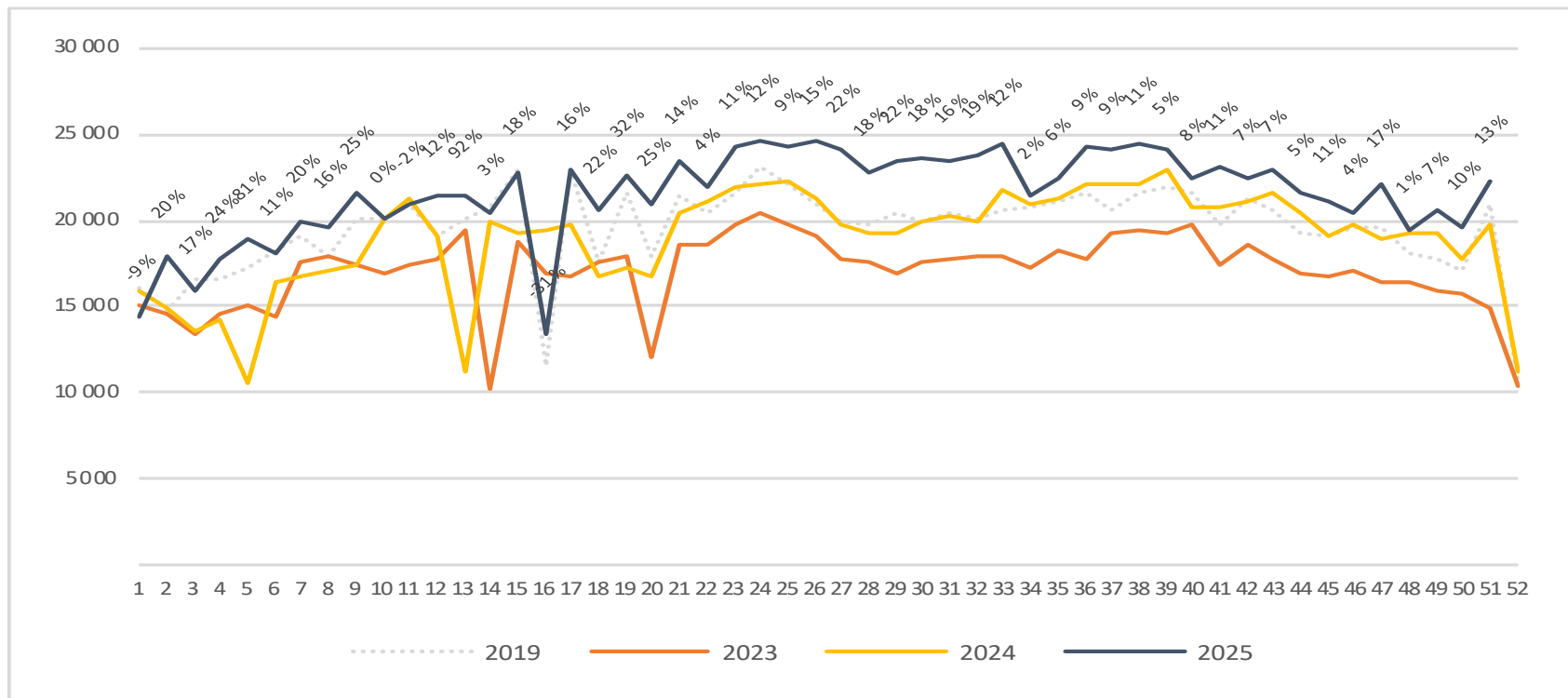
Passengers Local Mid airports total per week

The change is measured against the same week last year



Passengers Local Mid airports domestic per week

The change is measured against the same week last year



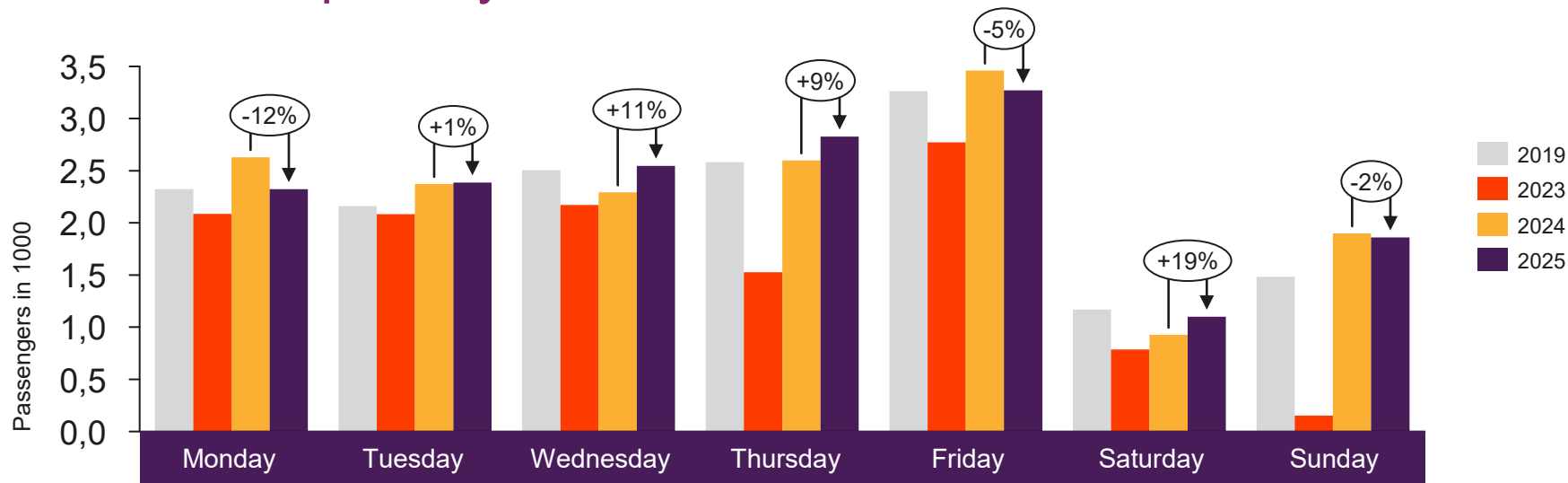


[Return to content
page](#)

Local airports on the West coast and in Troms and Finnmark

Total passenger numbers from Berlevåg, Båtsfjord, Florø, Førde, Hammerfest, Hasvik, Honningsvåg, Lakselv, Mehamn, Røros, Sandane, Sogndal, Sørkjosen, Vadsø, Vardø and Ørsta-Volda

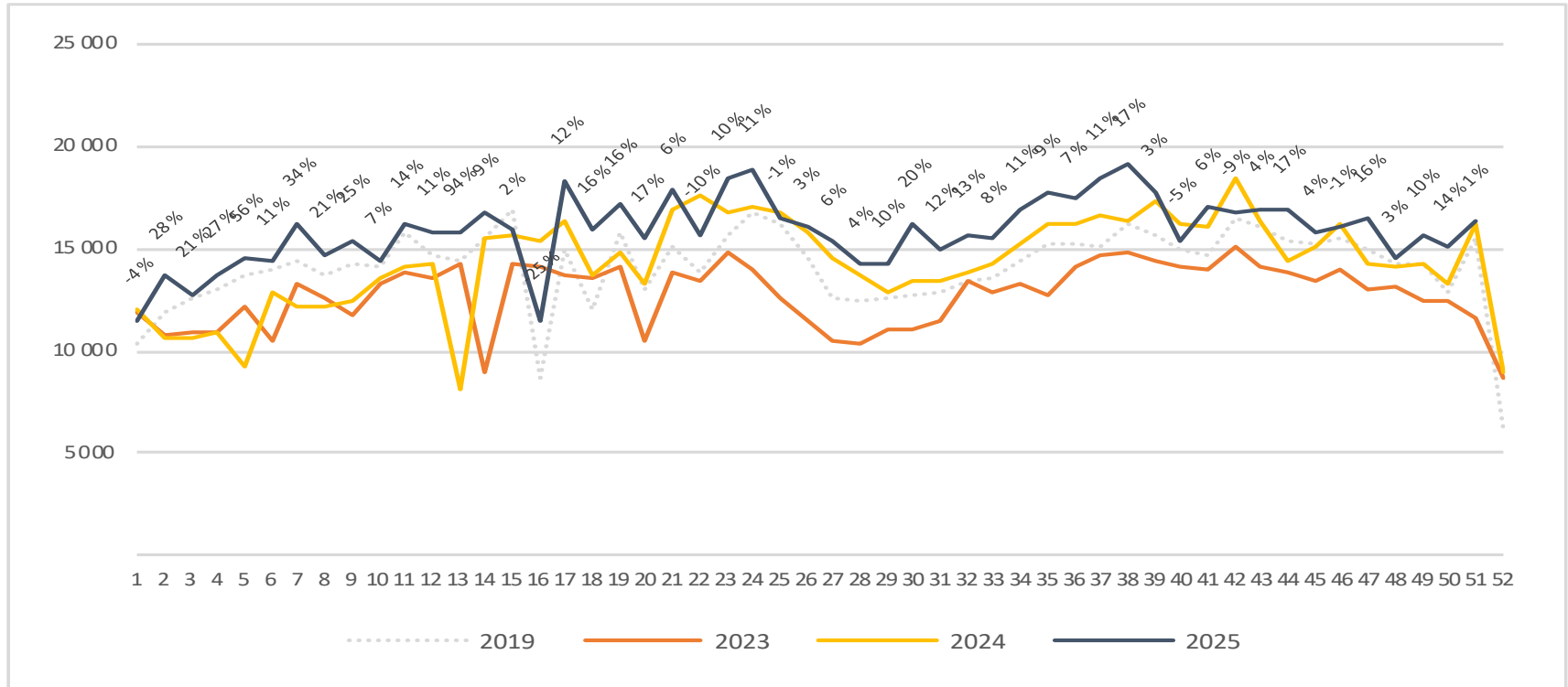
Passengers local airports on the West coast and in Troms and Finnmark total per day week 51



	Monday	Tuesday	Wednesday	Thursday	Friday	Saturday	Sunday
2019	2 323	2 162	2 505	2 581	3 262	1 170	1 484
2023	2 086	2 084	2 171	1 528	2 773	787	152
2024	2 630	2 373	2 292	2 599	3 460	927	1 900
2025	2 322	2 387	2 547	2 827	3 271	1 100	1 860

Passengers local airports on the West coast and in Troms and Finnmark total per week

The change is measured against the same week last year



Passengers local airports on the West coast and in Troms and Finnmark domestic per week

The change is measured against the same week last year

