



Passenger numbers per week

## Preliminary figures

- The figures for the previous week are preliminary. It takes some time for all passenger numbers to be reported, so the figures for the previous week may be lower than the final figures.
- The figures are from SIA, Avinor's traffic database.

# Content

- Top 10 airports
- Avinor total
- Selected airports
- The 4 biggest airports
- Regional and local airports
  - Regional airports
  - Local airports in Trøndelag and Nordland
  - Local airports on the west coast of Norway and in Troms and Finnmark

# Top 10 airports, total, week 50

Airport	2019	2023	2024	2025	2025 vs. 2024	
					Change	Change %
Oslo	460 419	401 295	424 260	439 655	15 395	4 %
Bergen	103 665	102 862	104 937	109 021	4 084	4 %
Trondheim	72 244	67 963	69 138	70 707	1 569	2 %
Tromsø	41 387	47 034	58 005	65 765	7 760	13 %
Stavanger	72 278	65 418	63 143	65 691	2 548	4 %
Bodø	28 071	28 298	28 986	33 741	4 755	16 %
Ålesund	18 678	17 544	16 260	16 310	50	0 %
Kristiansand	18 027	14 055	12 904	15 052	2 148	17 %
Harstad/Narvik	11 349	12 125	11 290	12 910	1 620	14 %
Alta	5 754	5 420	5 977	6 028	51	1 %

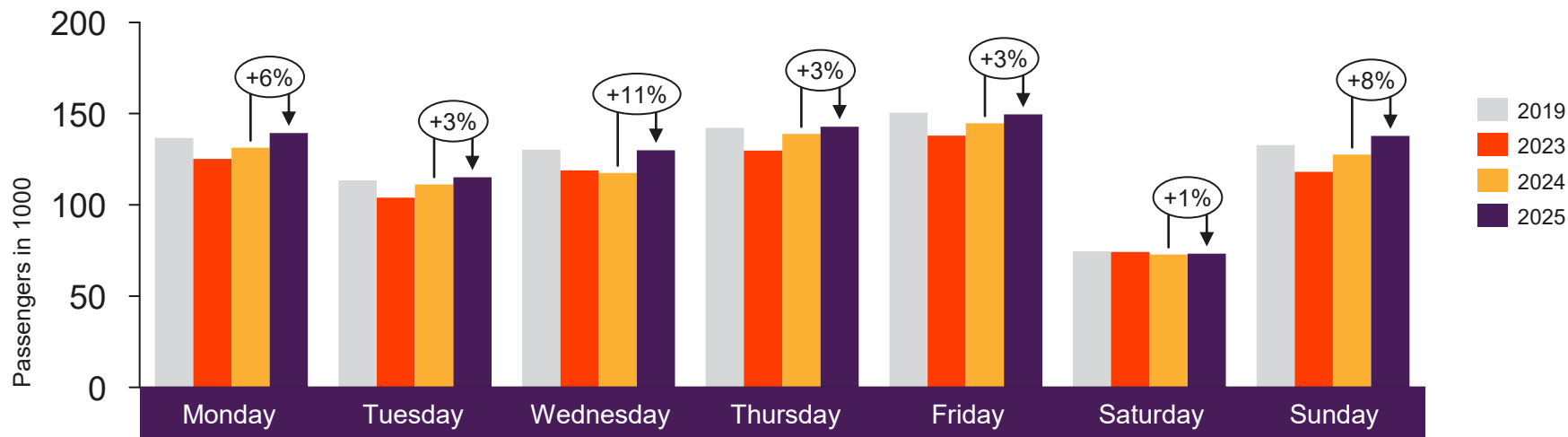


[Return to content page](#)

# Avinor total

Passenger numbers for all Avinor airports

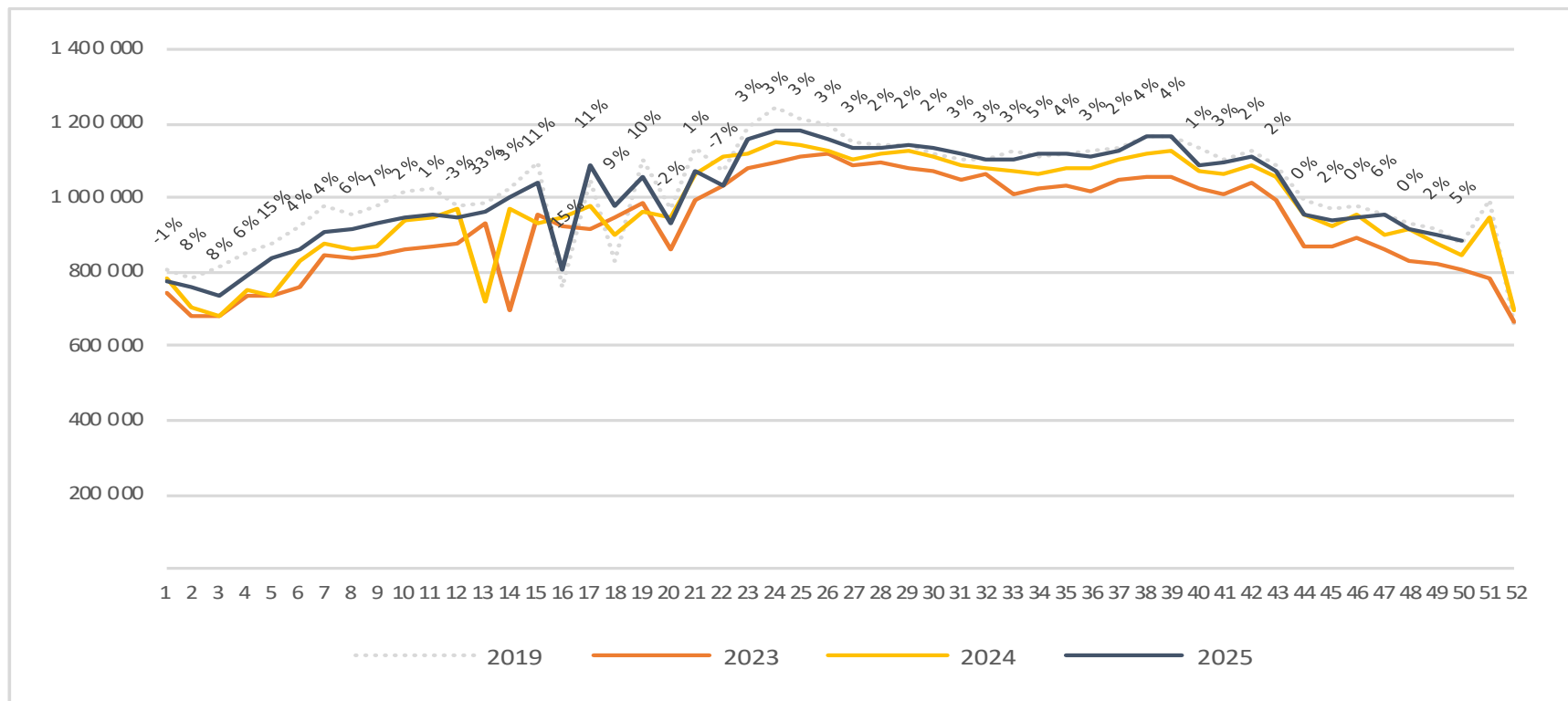
# Passengers Avinor total per day week 50



2019	136 664	113 428	130 277	142 133	150 610	74 573	132 712
2023	125 155	103 926	118 986	129 841	137 877	74 268	118 089
2024	131 281	111 256	117 548	138 842	144 703	72 851	127 559
2025	139 301	115 068	129 929	142 872	149 589	73 335	137 773

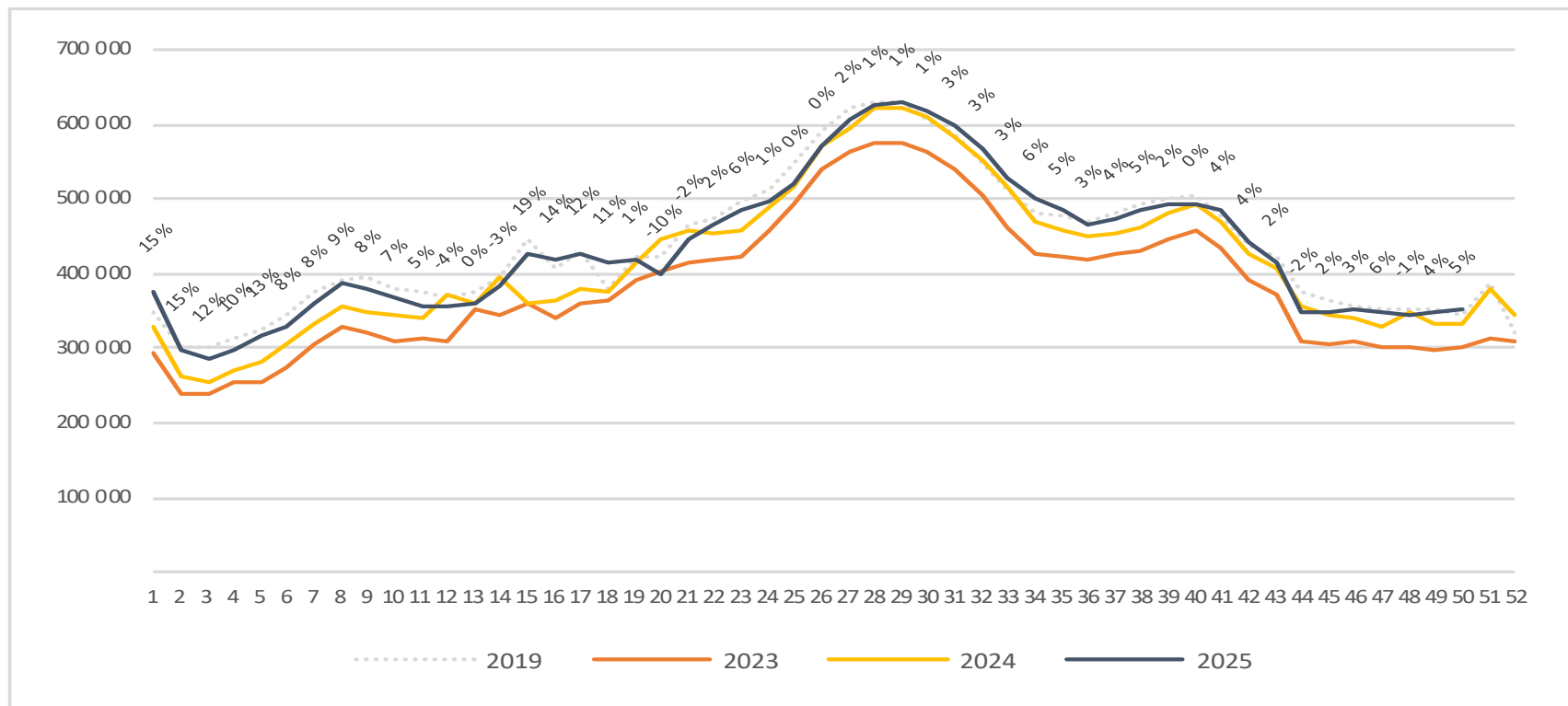
# Passengers Avinor total per week

The change is measured against the same week last year



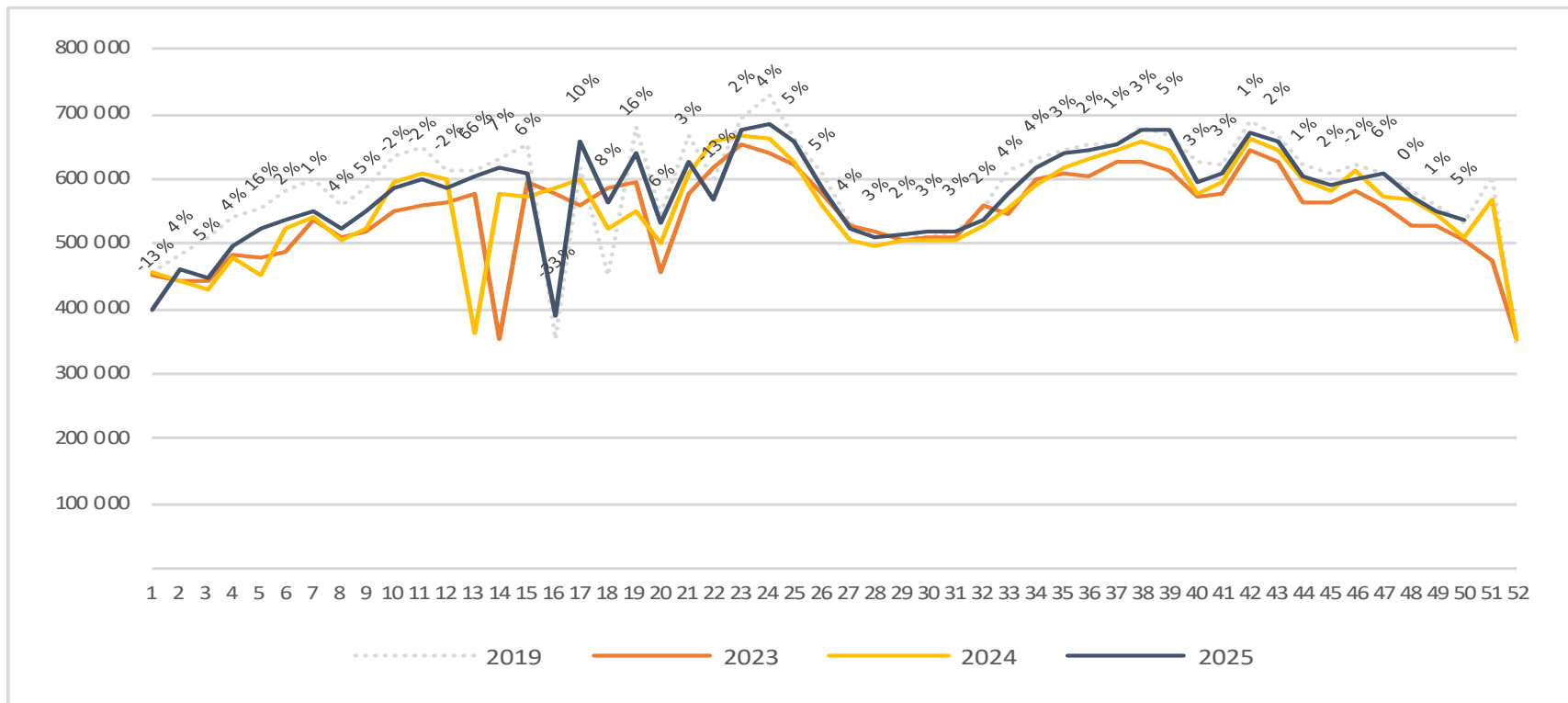
# Passengers Avinor international per week

The change is measured against the same week last year



# Passengers Avinor domestic per week

The change is measured against the same week last year

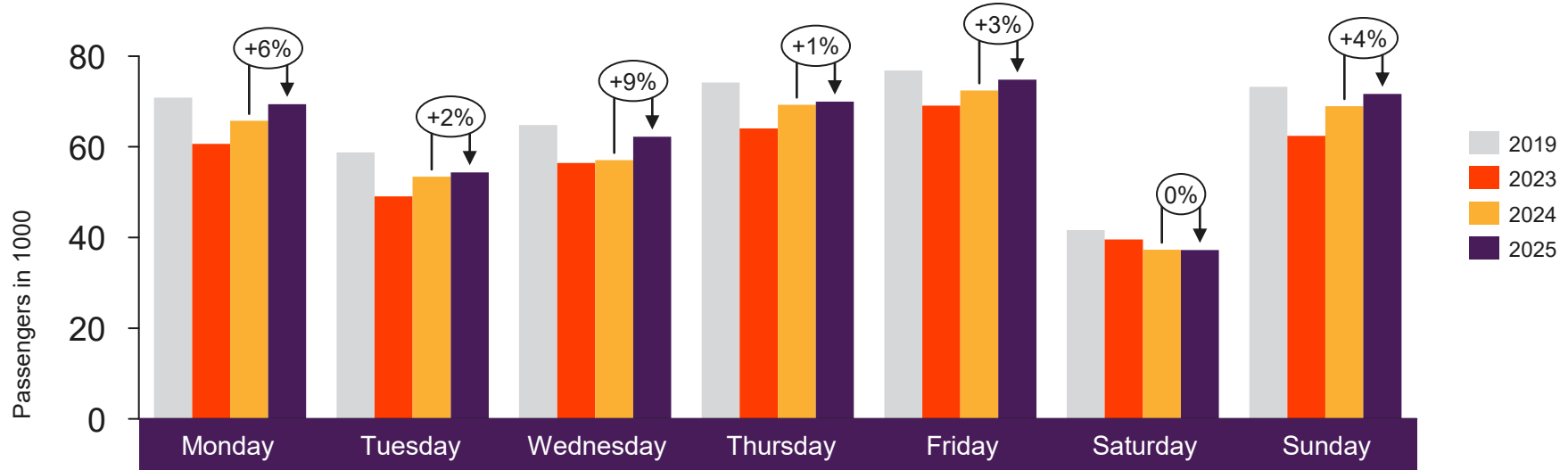




[Return to content page](#)

# Selected airports

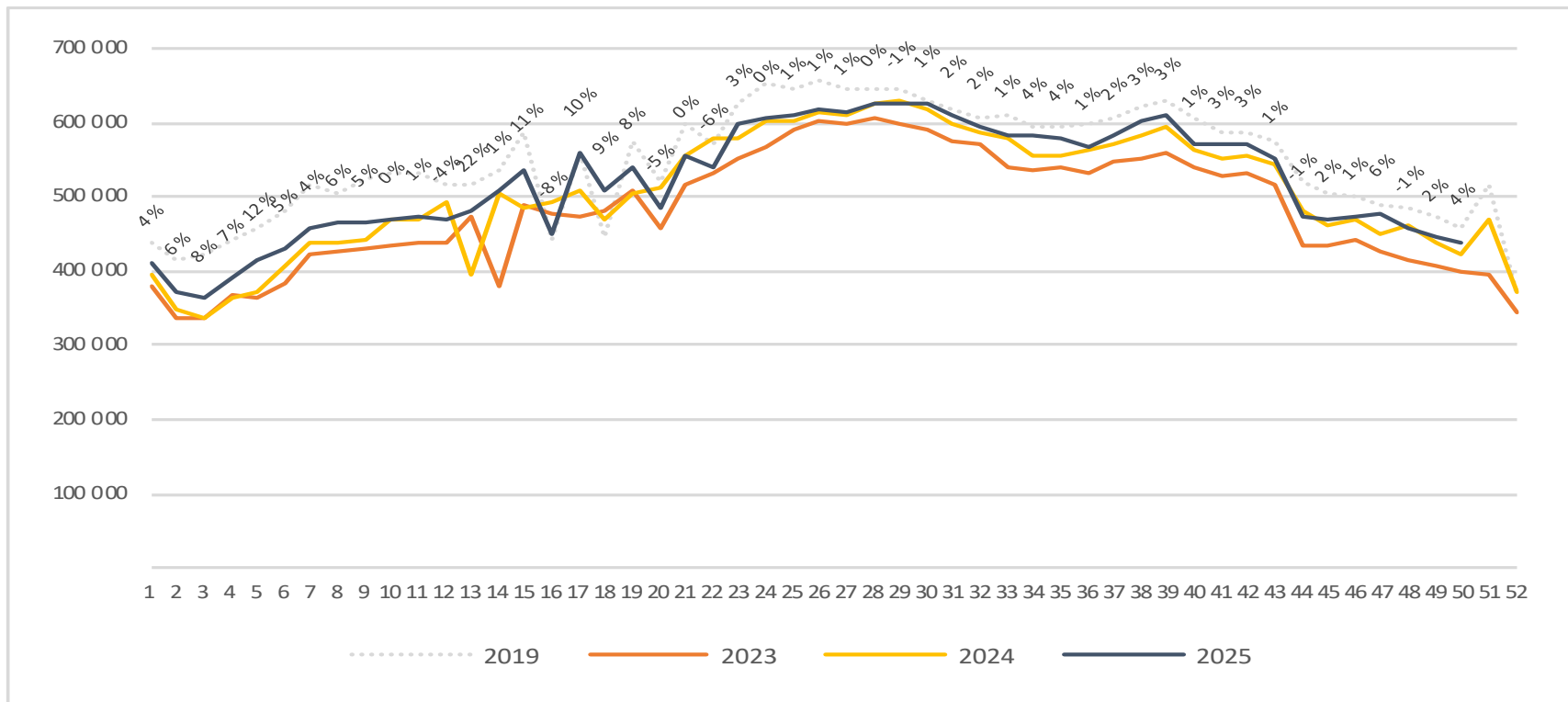
# Passengers OSL total per day week 50



2019	70 867	58 781	64 805	74 208	76 842	41 646	73 270
2023	60 681	49 053	56 427	64 055	69 115	39 558	62 406
2024	65 731	53 414	57 099	69 293	72 454	37 314	68 955
2025	69 425	54 357	62 207	69 949	74 818	37 232	71 667

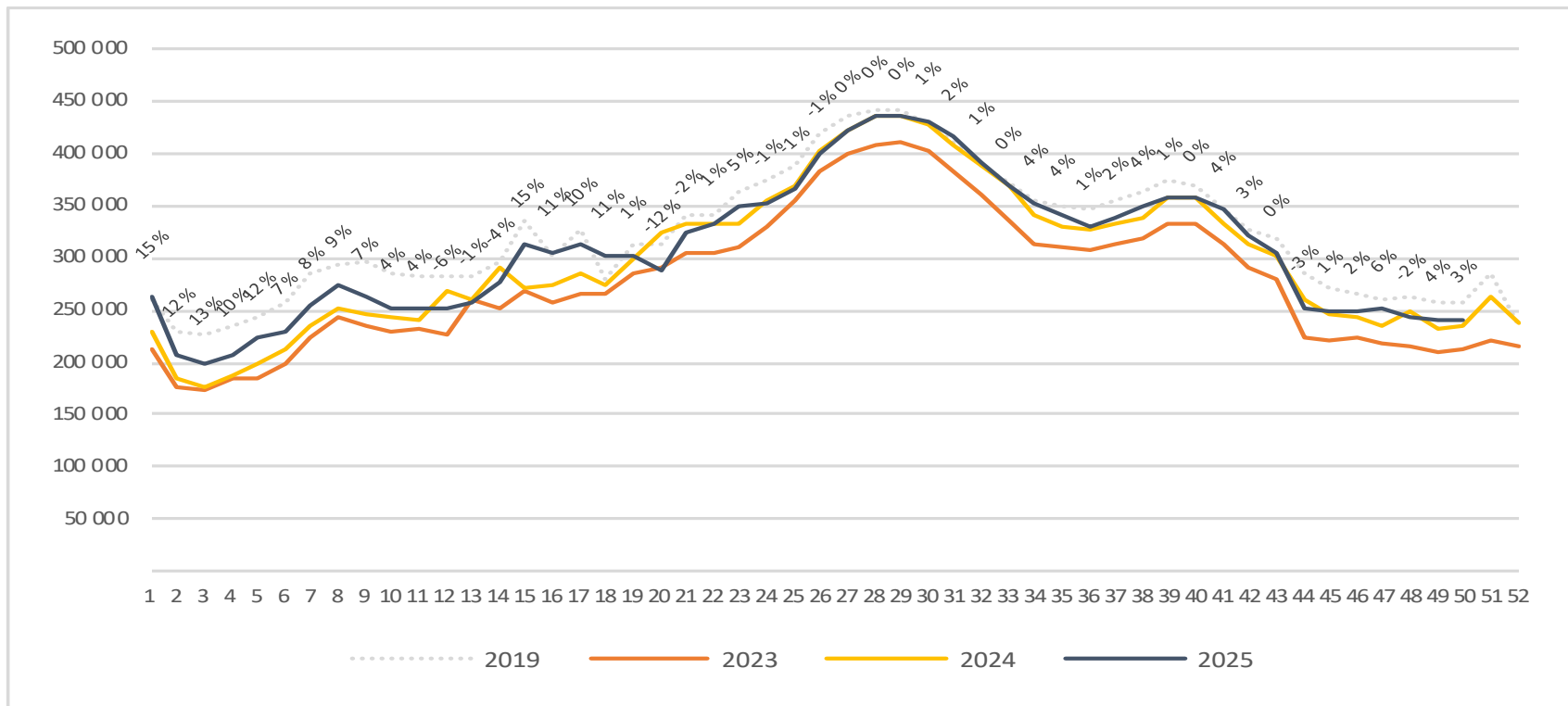
# Passengers OSL total per week

The change is measured against the same week last year



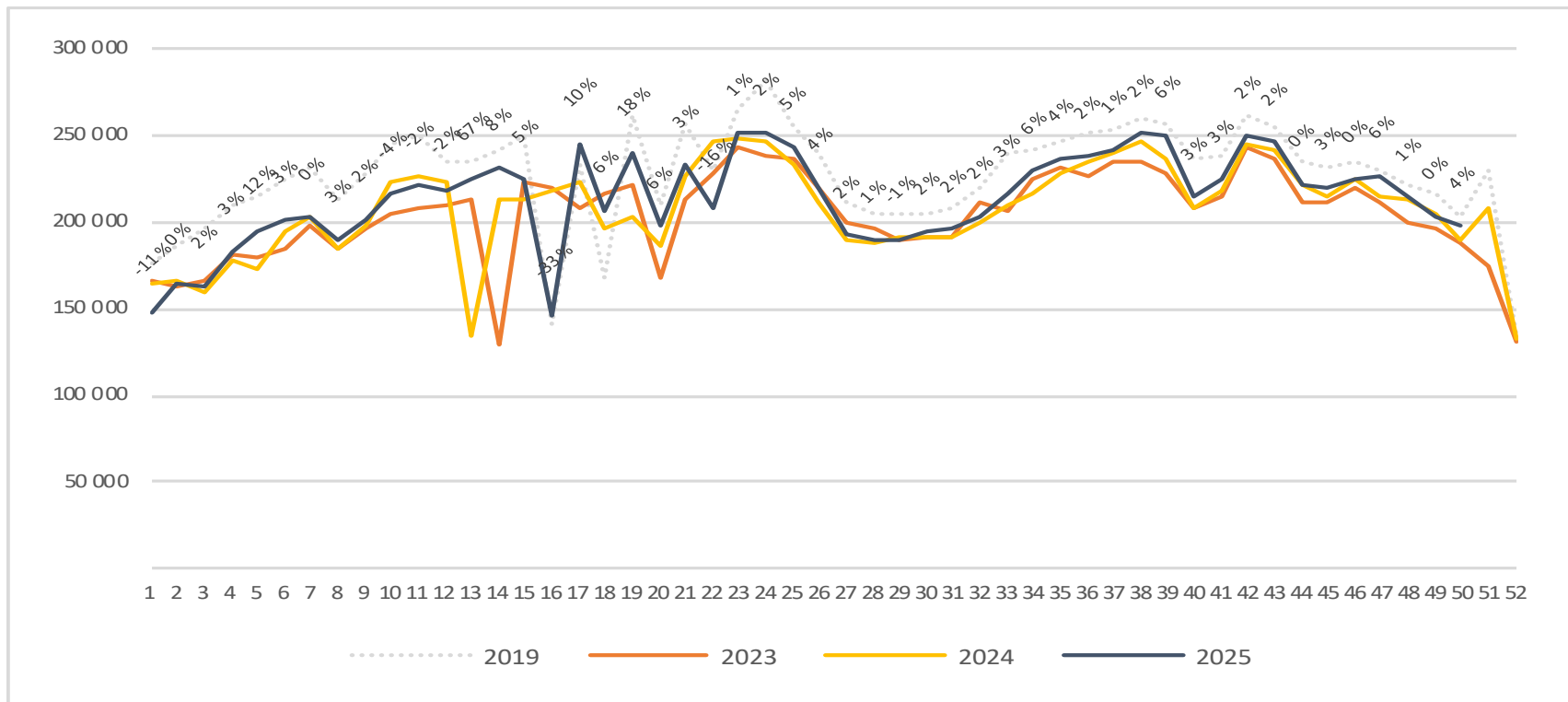
# Passengers OSL international per week

The change is measured against the same week last year

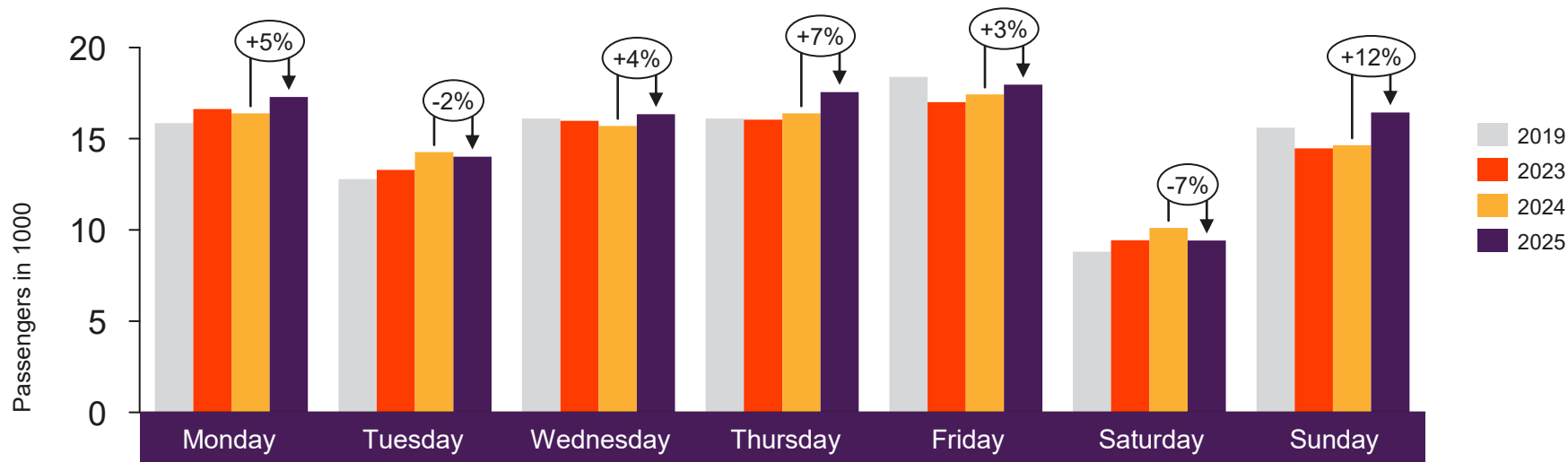


# Passengers OSL domestic per week

The change is measured against the same week last year



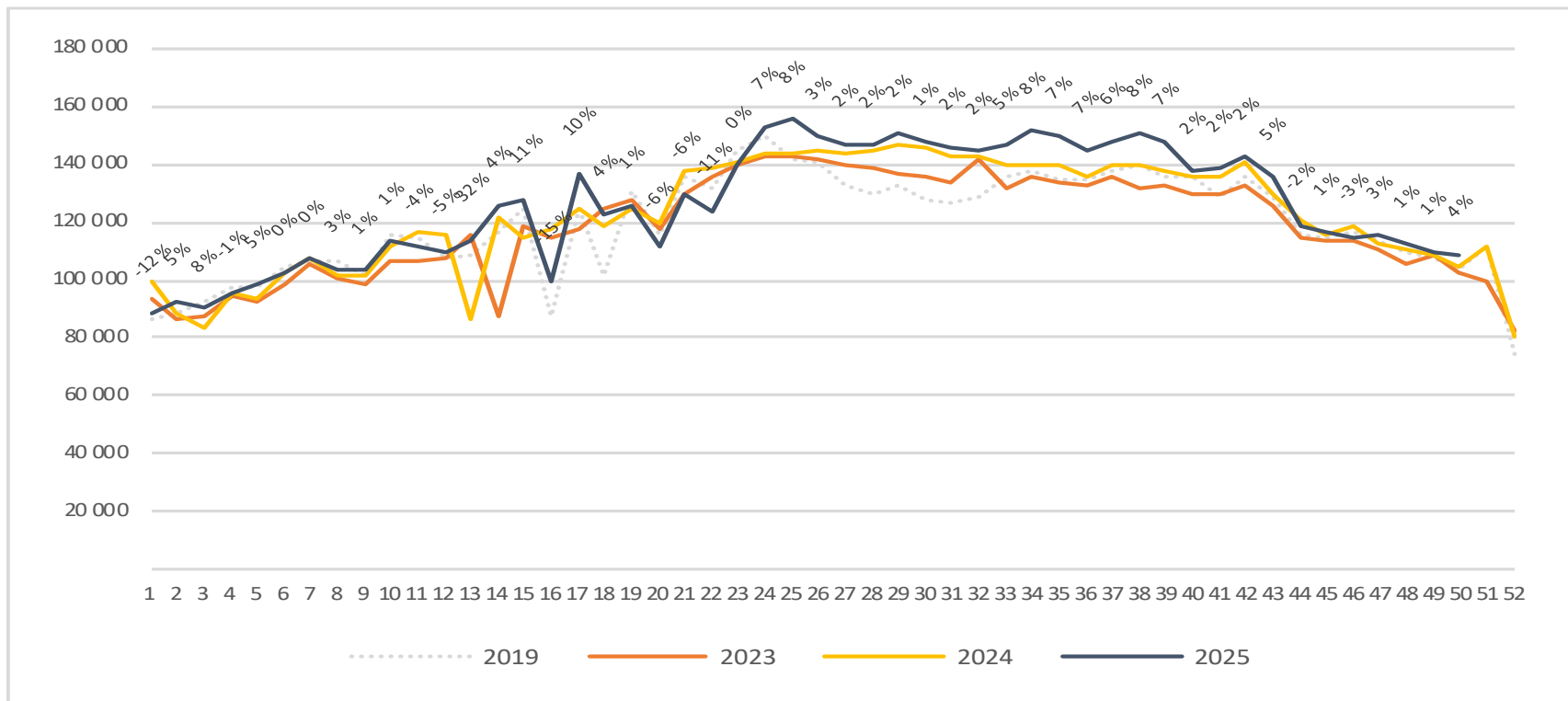
# Passengers BGO total per day week 50



	Monday	Tuesday	Wednesday	Thursday	Friday	Saturday	Sunday
2019	15 860	12 790	16 101	16 113	18 396	8 801	15 604
2023	16 625	13 297	15 977	16 053	17 001	9 431	14 478
2024	16 386	14 264	15 707	16 389	17 431	10 118	14 642
2025	17 284	14 011	16 352	17 552	17 959	9 418	16 445

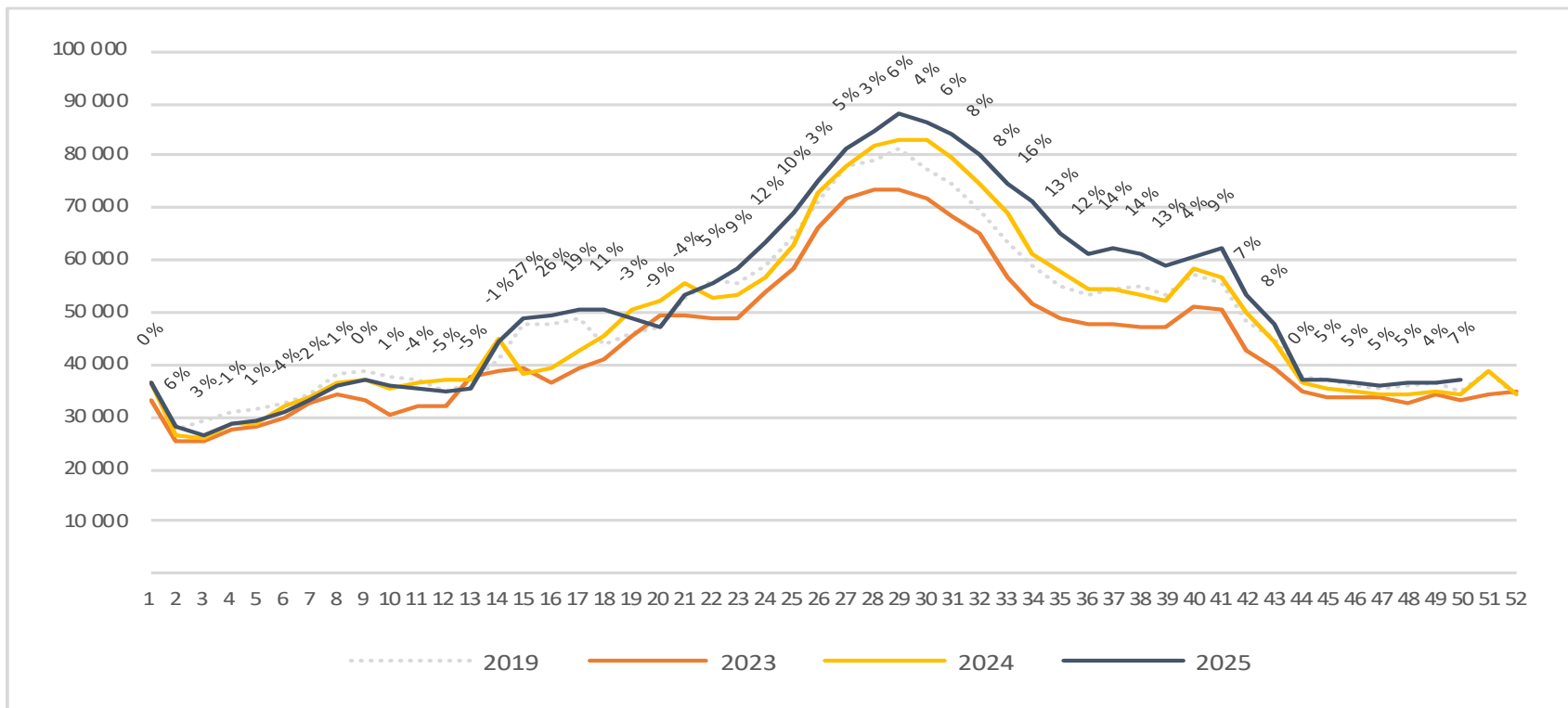
# Passengers BGO total per week

The change is measured against the same week last year



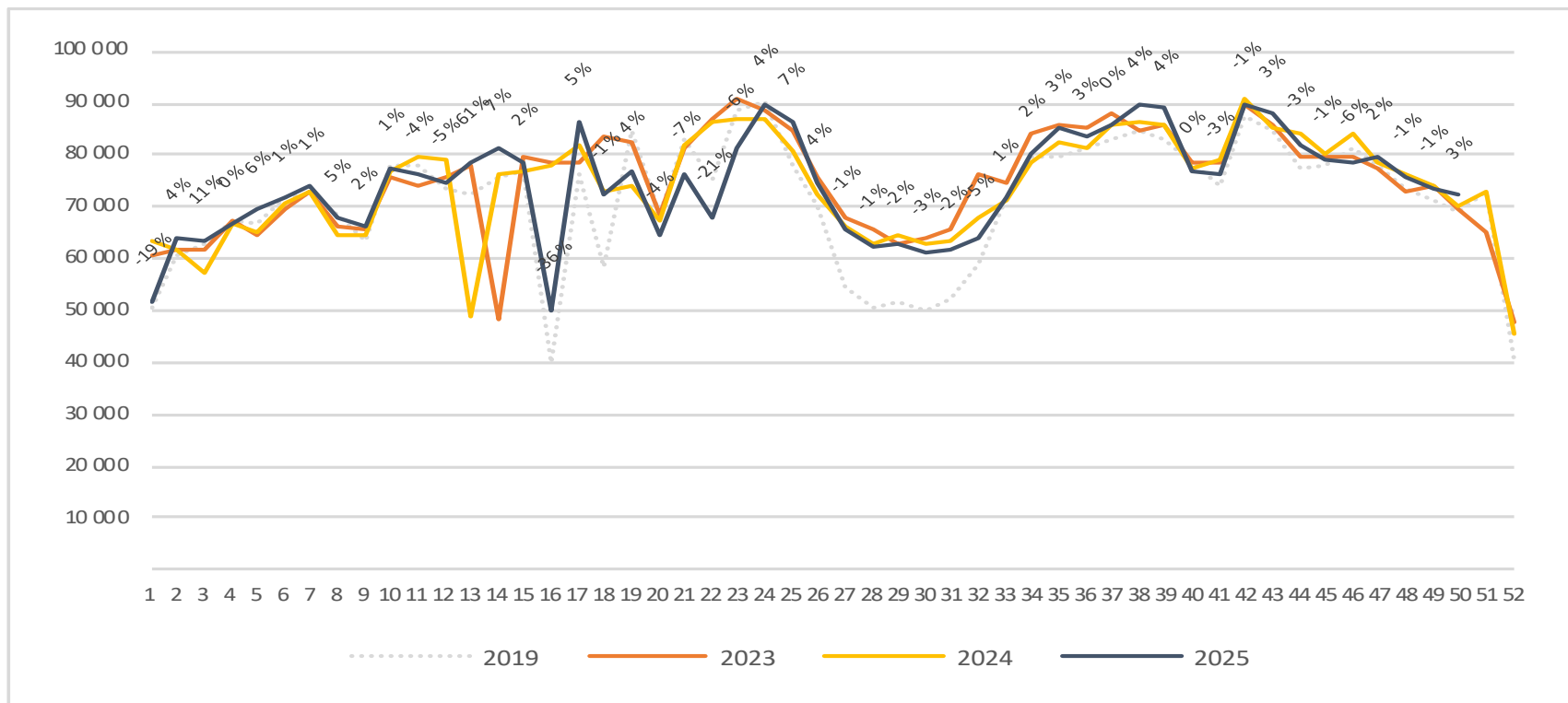
# Passengers BGO international per week

The change is measured against the same week last year

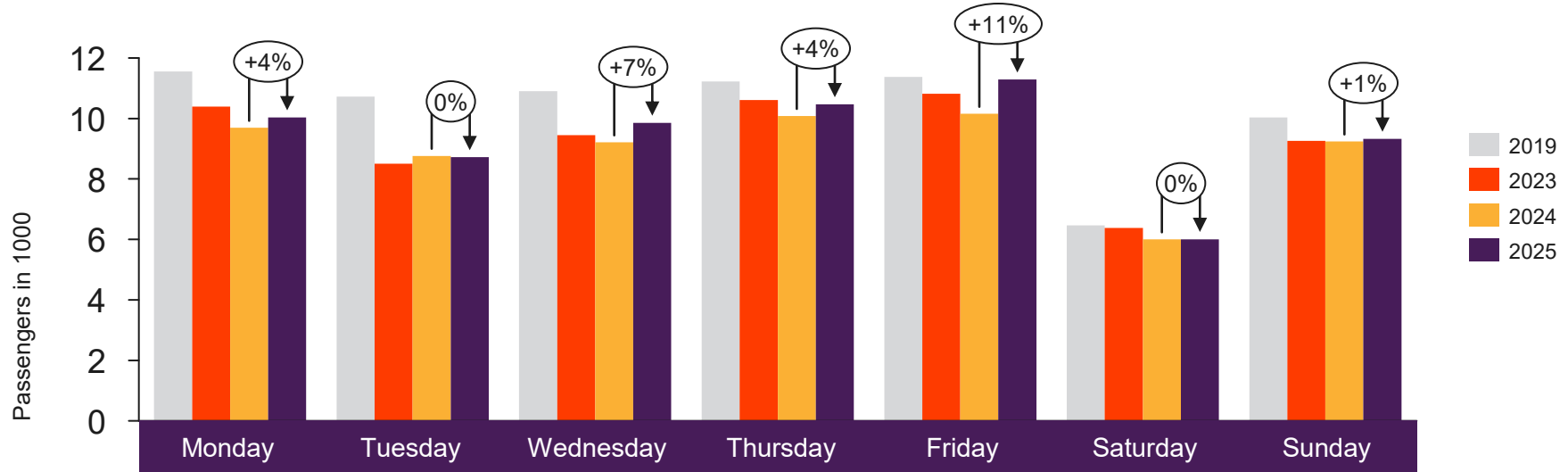


# Passengers BGO domestic per week

The change is measured against the same week last year



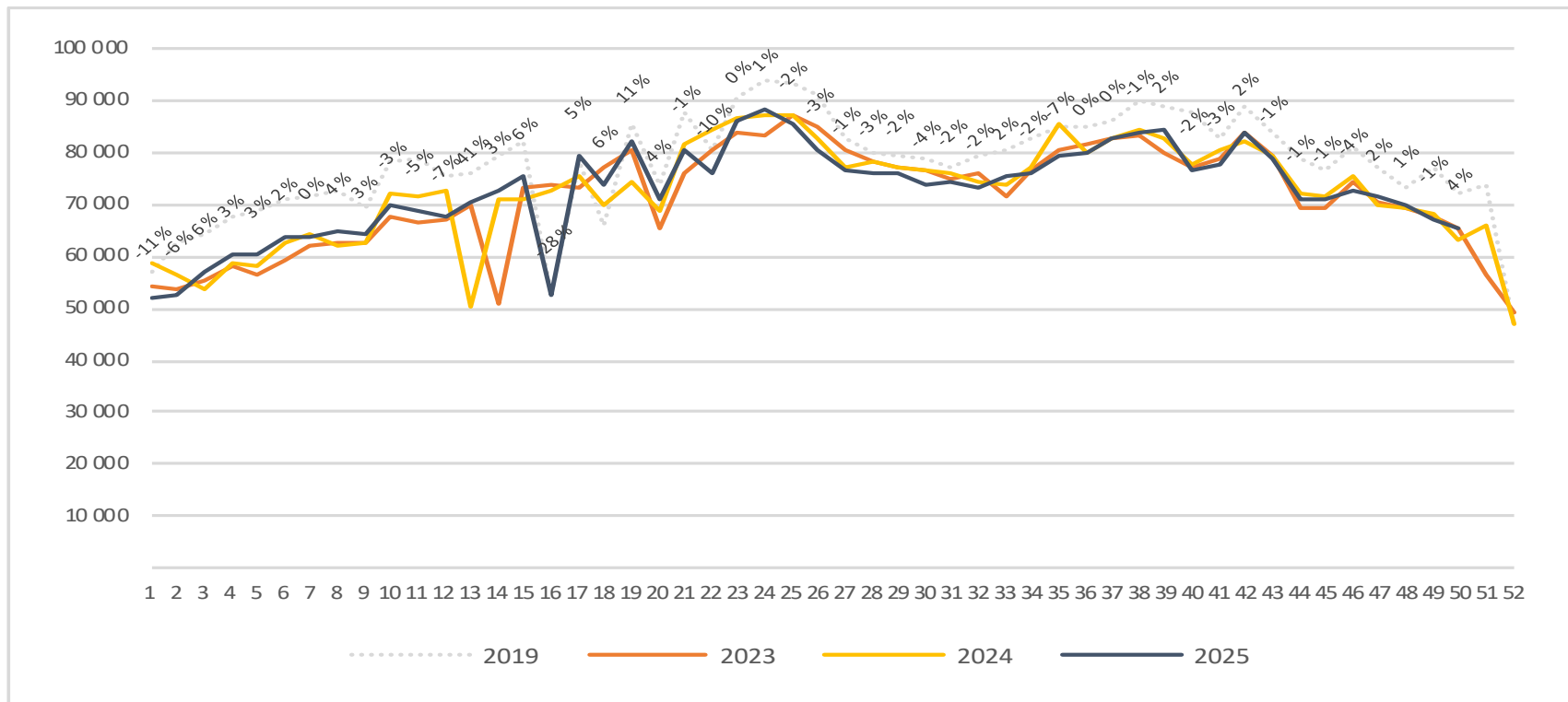
# Passengers SVG total per day week 50



	Monday	Tuesday	Wednesday	Thursday	Friday	Saturday	Sunday
2019	11 554	10 726	10 905	11 227	11 376	6 460	10 030
2023	10 397	8 504	9 448	10 609	10 822	6 383	9 255
2024	9 692	8 761	9 211	10 082	10 154	6 004	9 239
2025	10 032	8 718	9 854	10 468	11 286	6 005	9 328

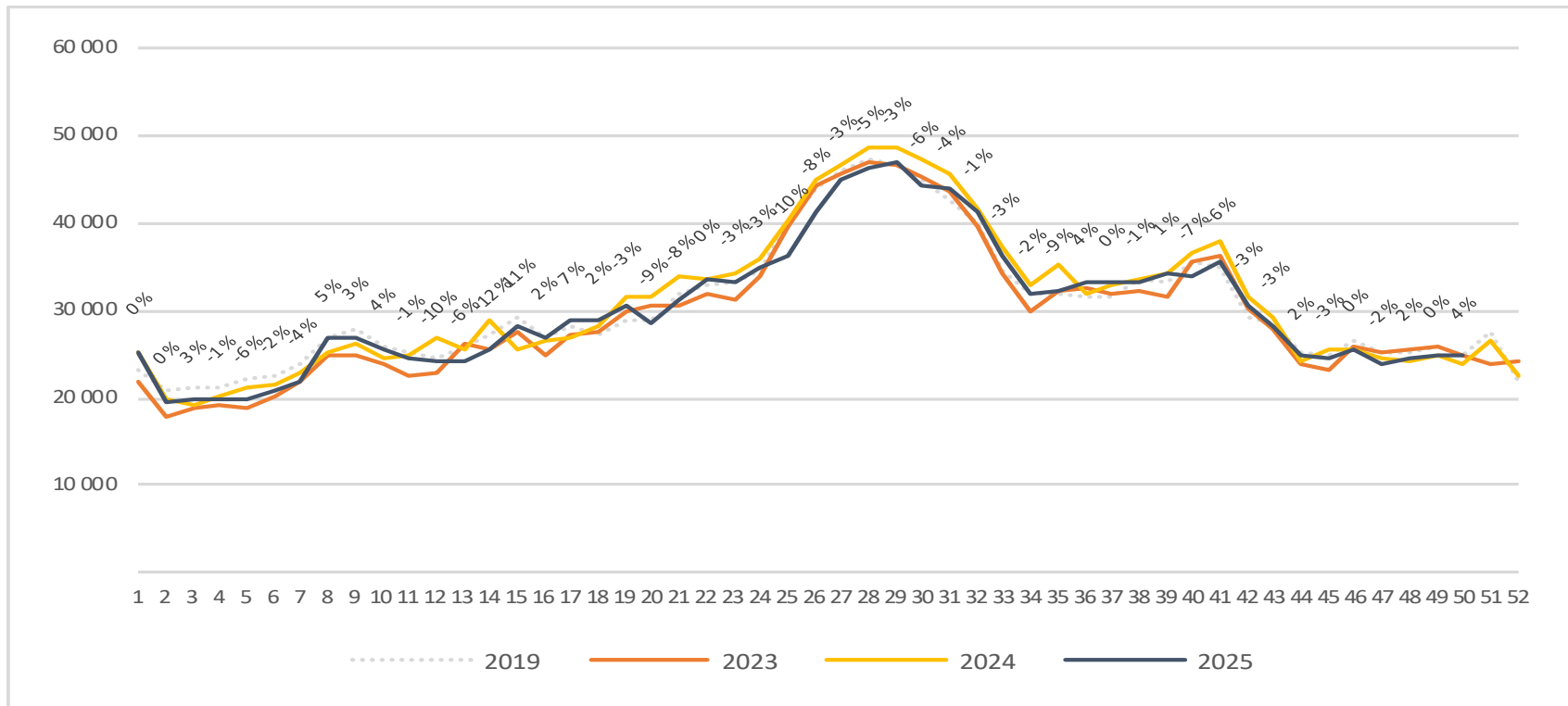
# Passengers SVG total per week

The change is measured against the same week last year



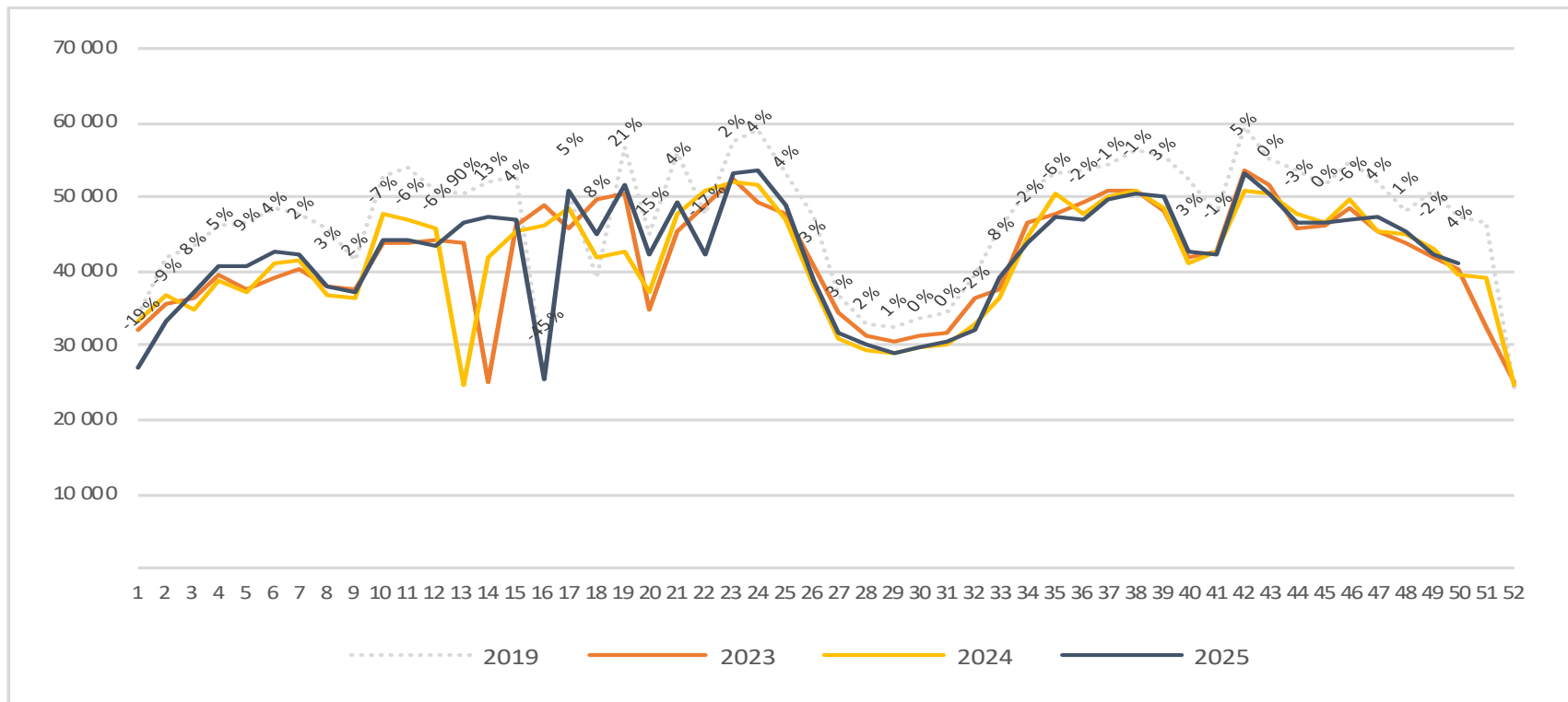
# Passengers SVG international per week

The change is measured against the same week last year

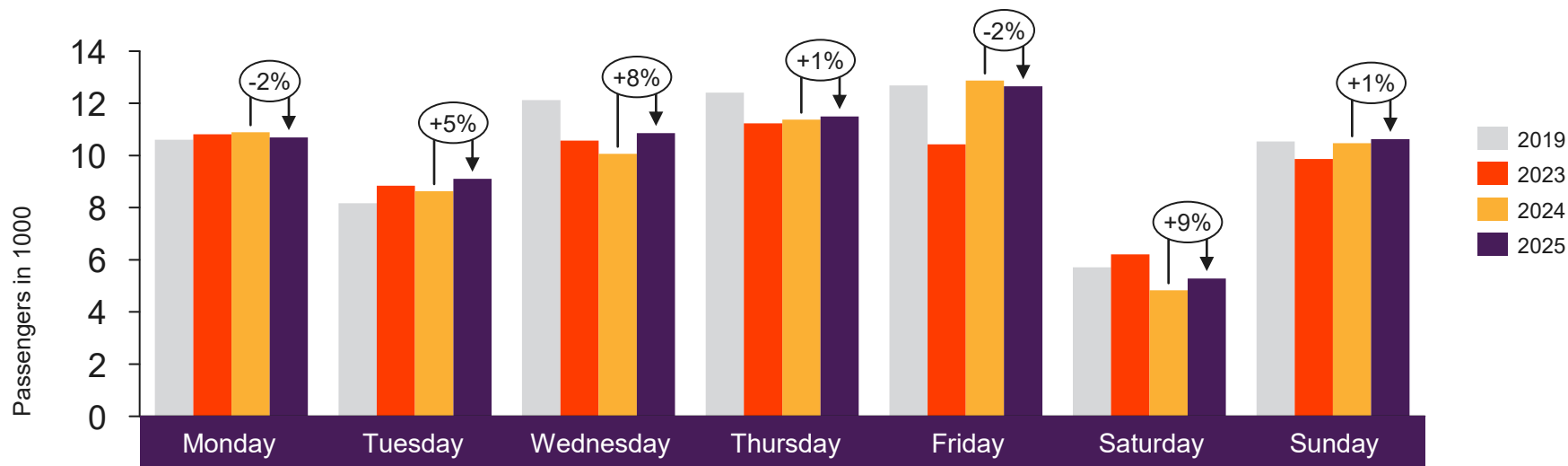


# Passengers SVG domestic per week

The change is measured against the same week last year



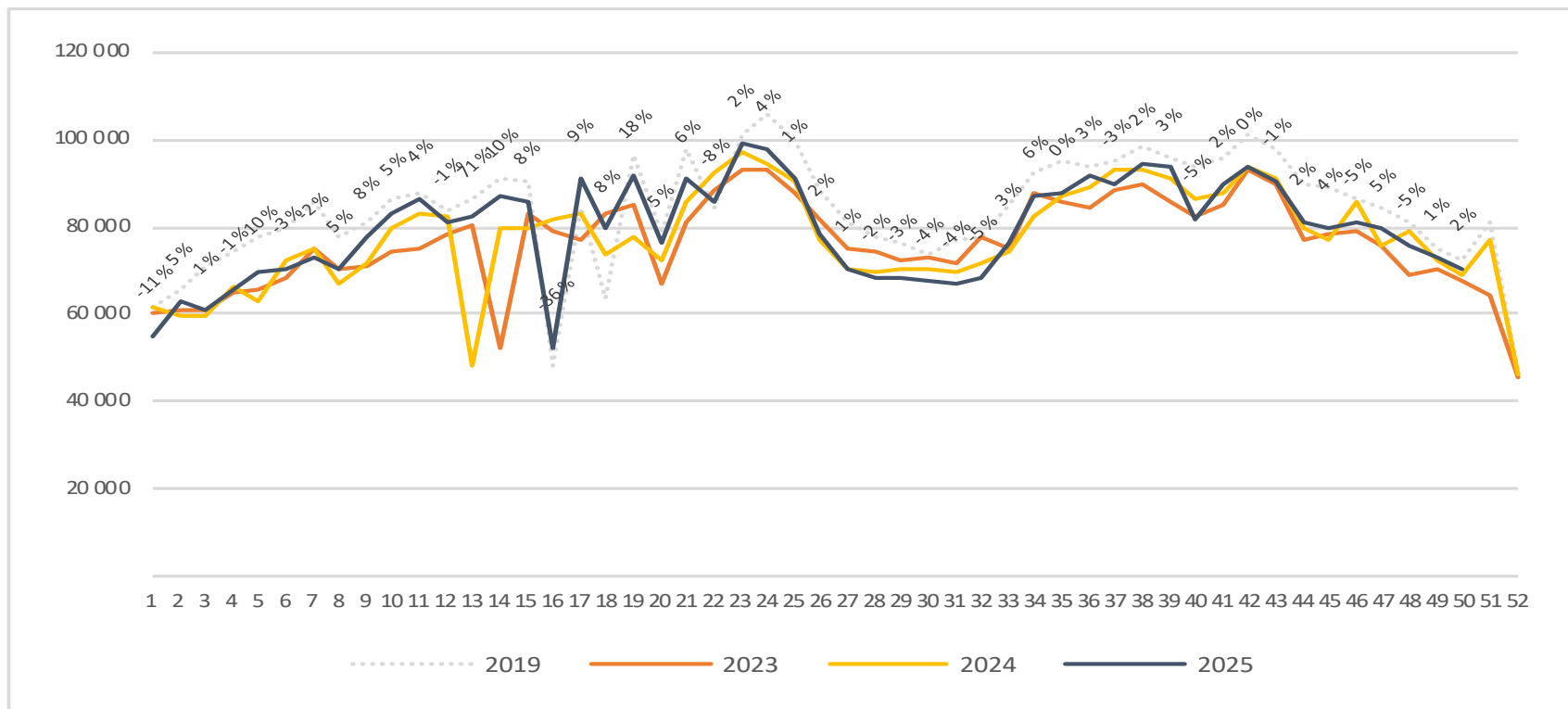
# Passengers TRD total per day week 50



2019	10 604	8 165	12 129	12 407	12 688	5 710	10 541
2023	10 817	8 838	10 572	11 233	10 424	6 209	9 870
2024	10 889	8 628	10 066	11 376	12 874	4 836	10 469
2025	10 691	9 101	10 856	11 497	12 651	5 286	10 625

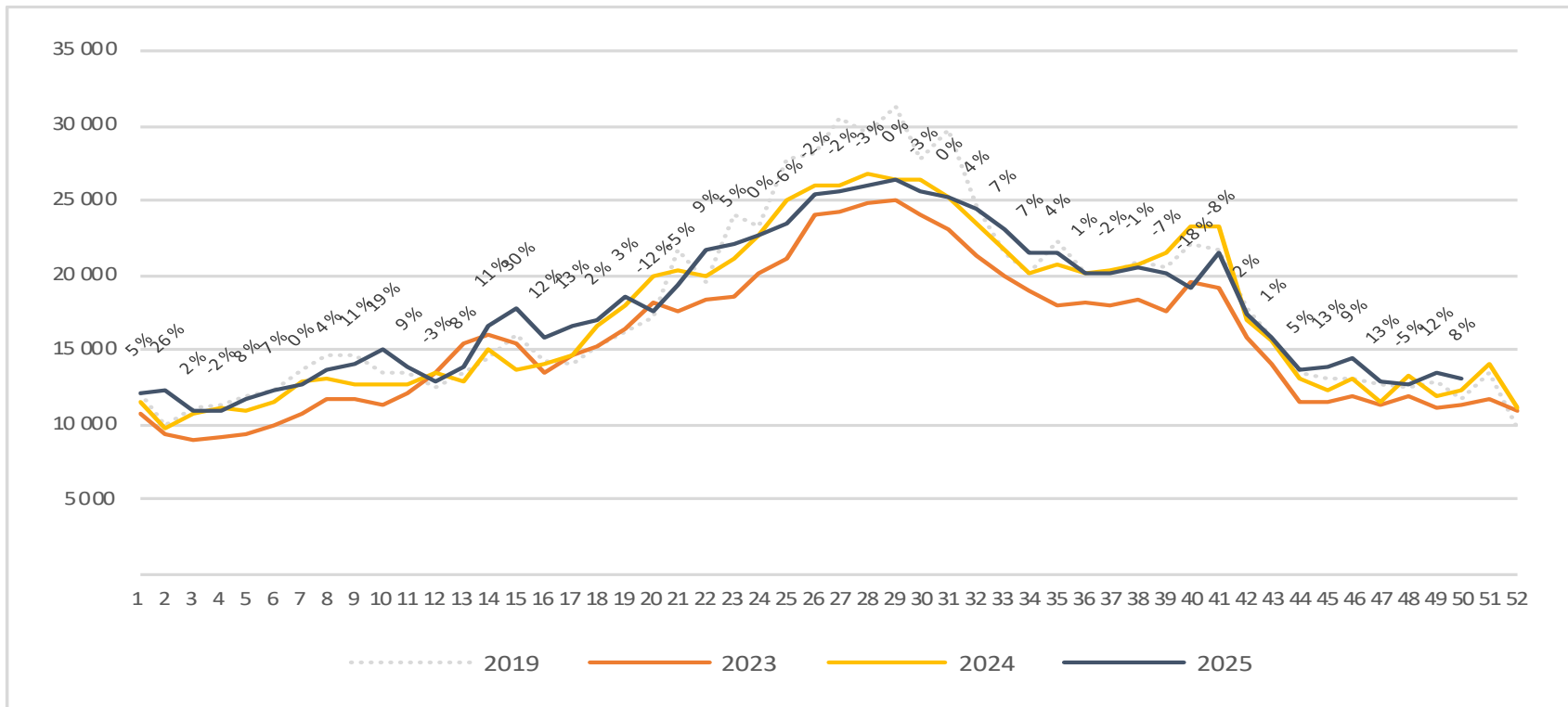
# Passengers TRD total per week

The change is measured against the same week last year



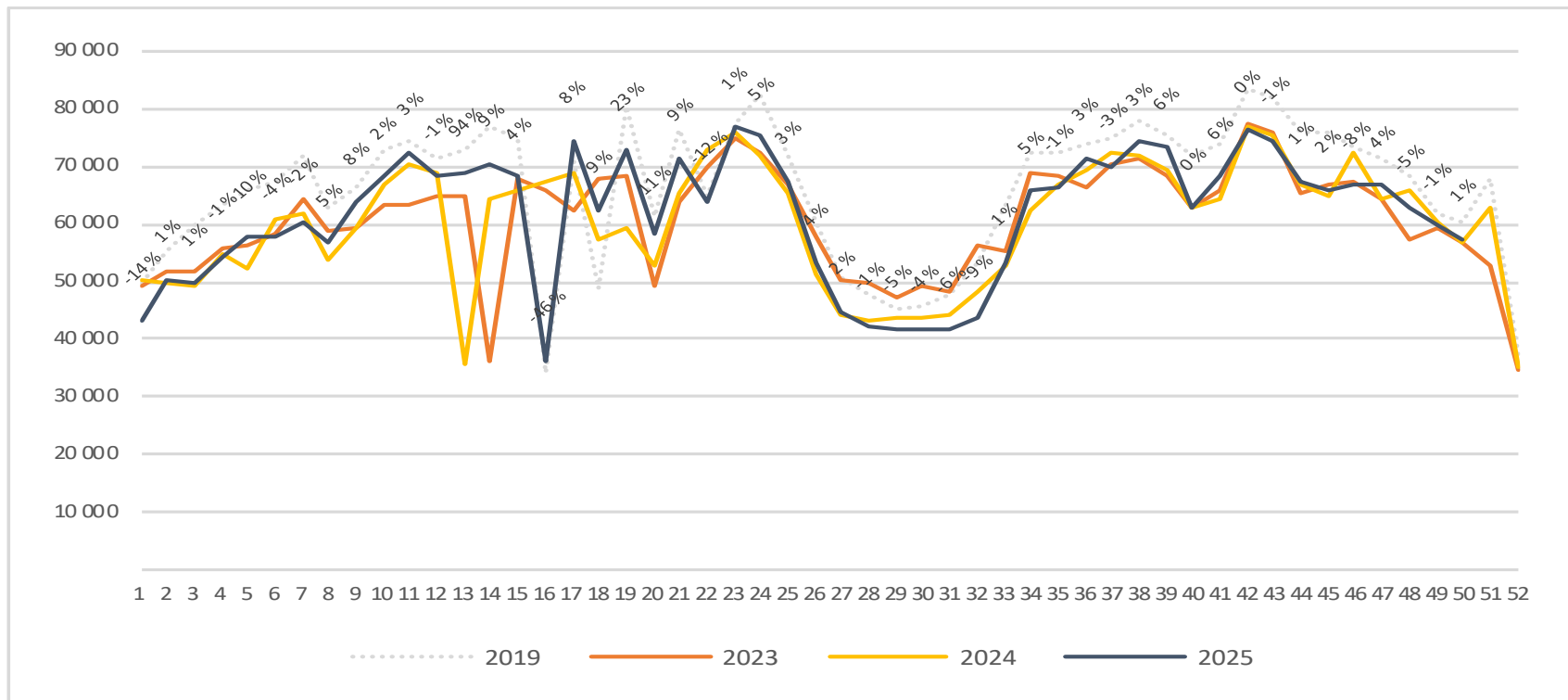
# Passengers TRD international per week

The change is measured against the same week last year

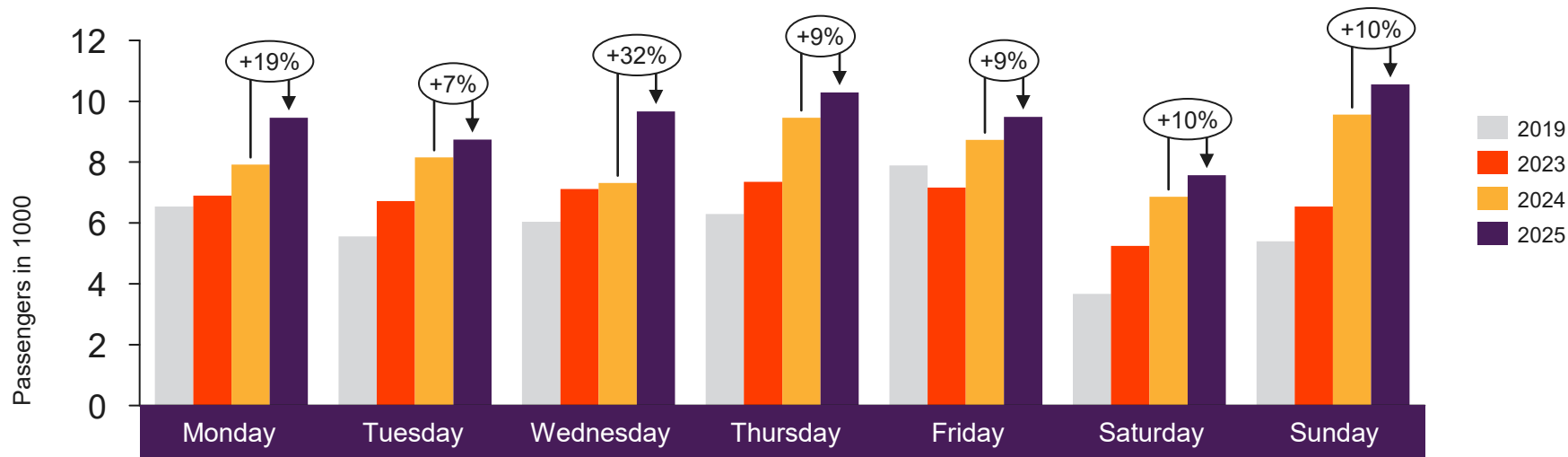


# Passengers TRD domestic per week

The change is measured against the same week last year



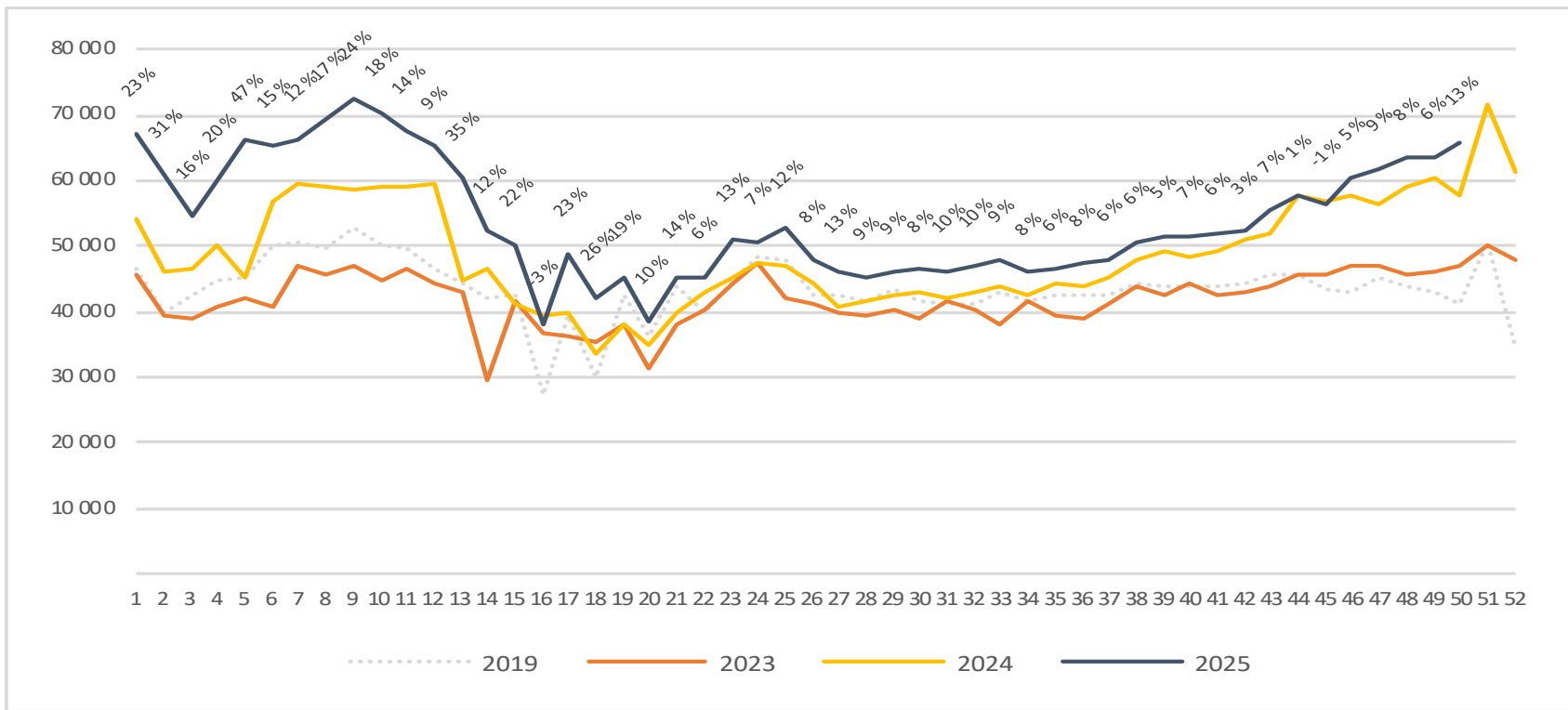
# Passengers TOS total per day week 50



	Monday	Tuesday	Wednesday	Thursday	Friday	Saturday	Sunday
2019	6 537	5 558	6 041	6 295	7 891	3 667	5 398
2023	6 897	6 715	7 116	7 354	7 164	5 250	6 538
2024	7 921	8 158	7 317	9 460	8 730	6 862	9 557
2025	9 462	8 739	9 670	10 291	9 489	7 565	10 549

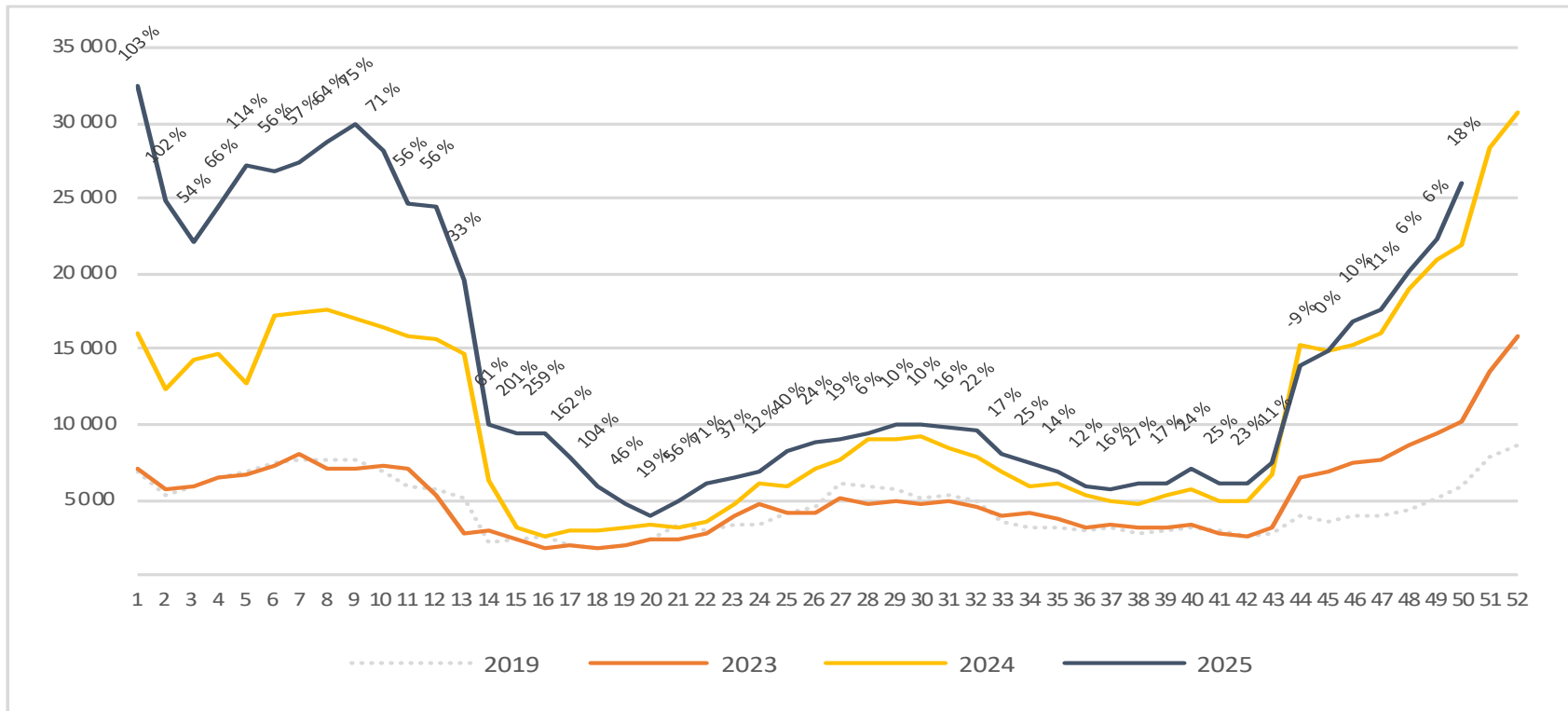
# Passengers TOS total per week

The change is measured against the same week last year



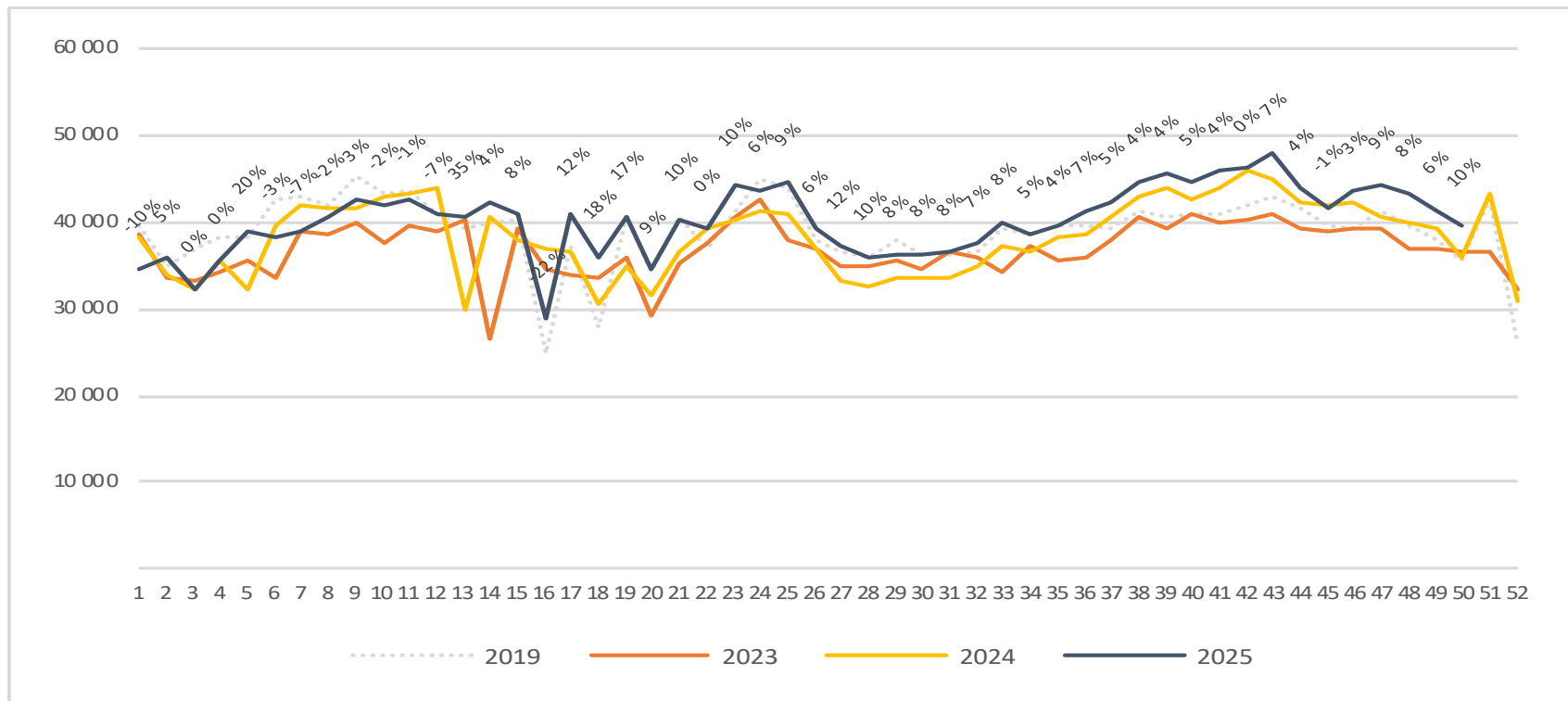
# Passengers TOS international per week

The change is measured against the same week last year



# Passengers TOS domestic per week

The change is measured against the same week last year



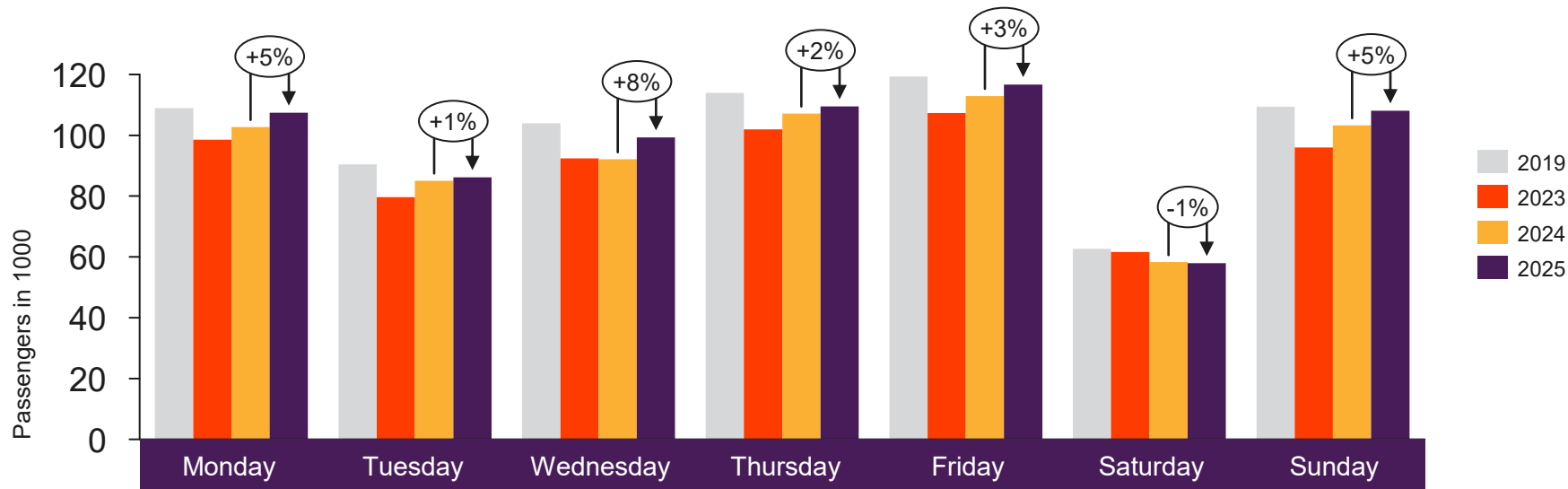


[Return to content  
page](#)

# Top 4 airports

Total passenger numbers from Oslo, Bergen, Stavanger and Trondheim

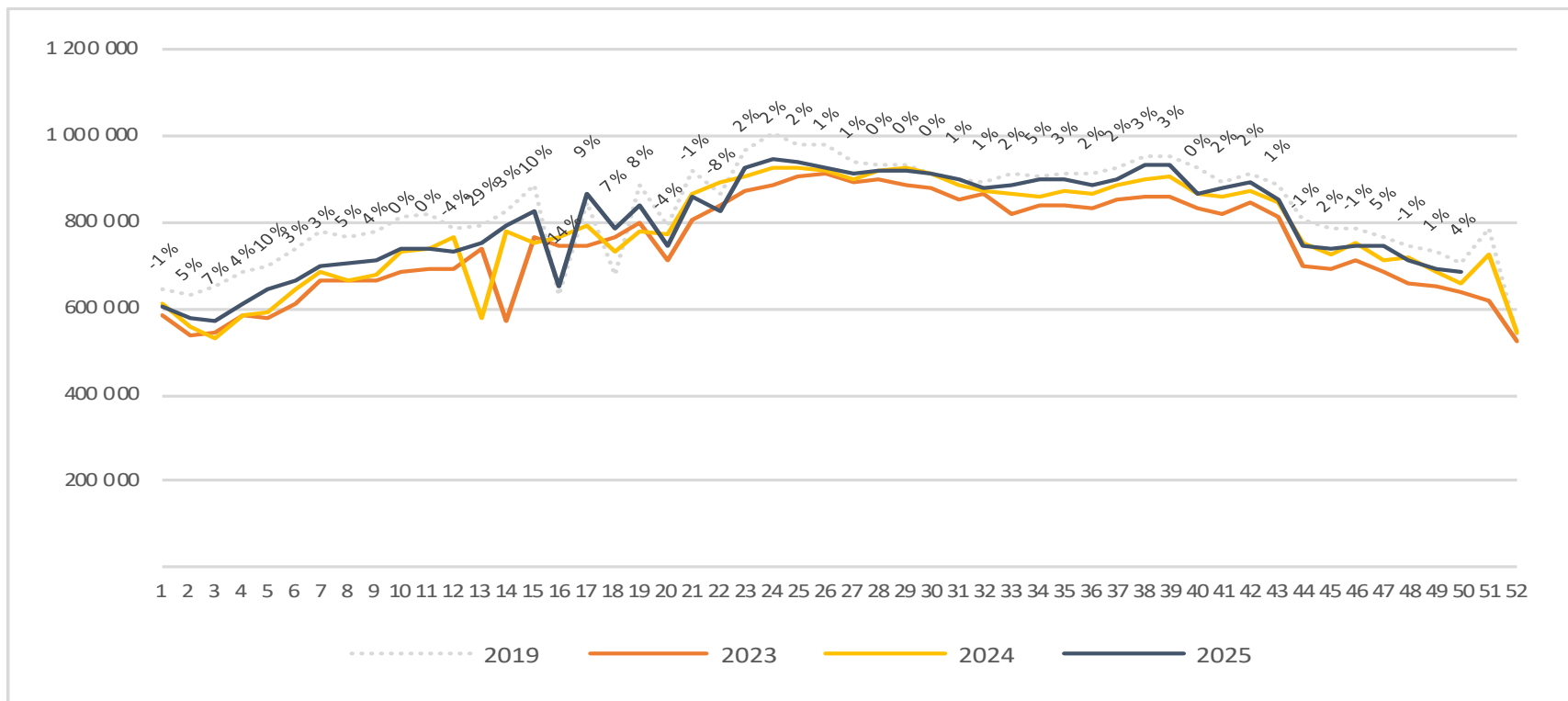
# Passengers top 4 airports total per day week 50



	Monday	Tuesday	Wednesday	Thursday	Friday	Saturday	Sunday
2019	108 885	90 462	103 940	113 955	119 302	62 617	109 445
2023	98 520	79 692	92 424	101 950	107 362	61 581	96 009
2024	102 698	85 067	92 083	107 140	112 913	58 272	103 305
2025	107 432	86 187	99 269	109 466	116 714	57 941	108 065

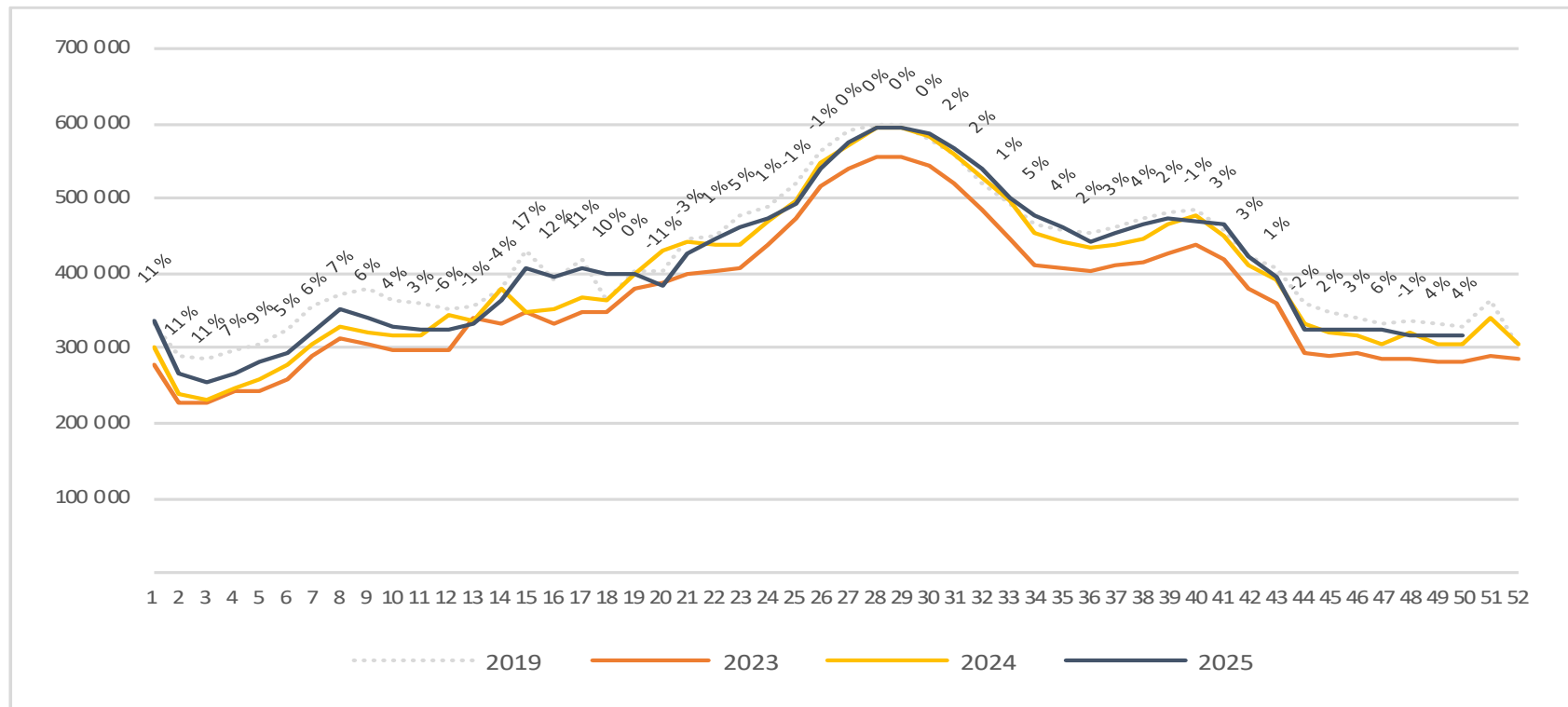
# Passengers top 4 airports total per week

The change is measured against the same week last year



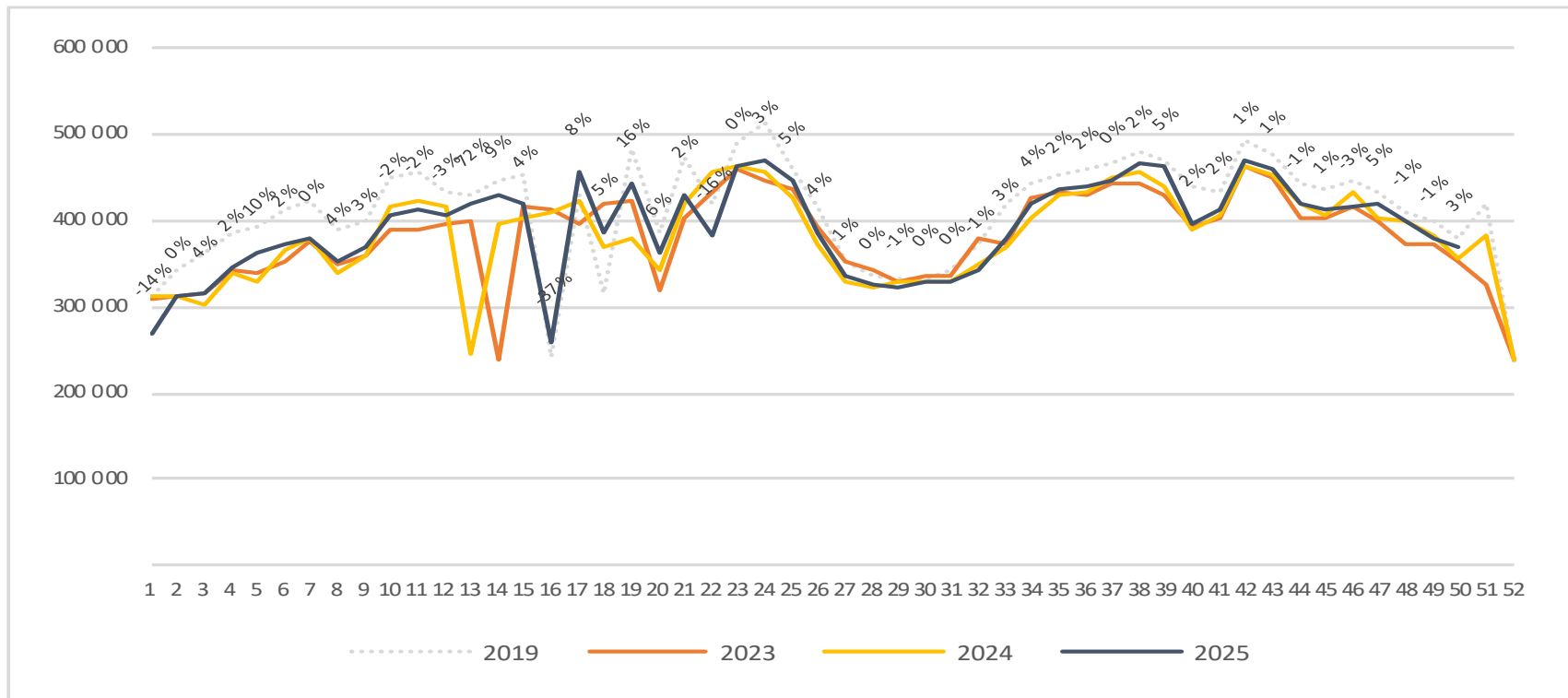
# Passengers top 4 airports international per week

The change is measured against the same week last year



# Passengers top 4 airports domestic per week

The change is measured against the same week last year



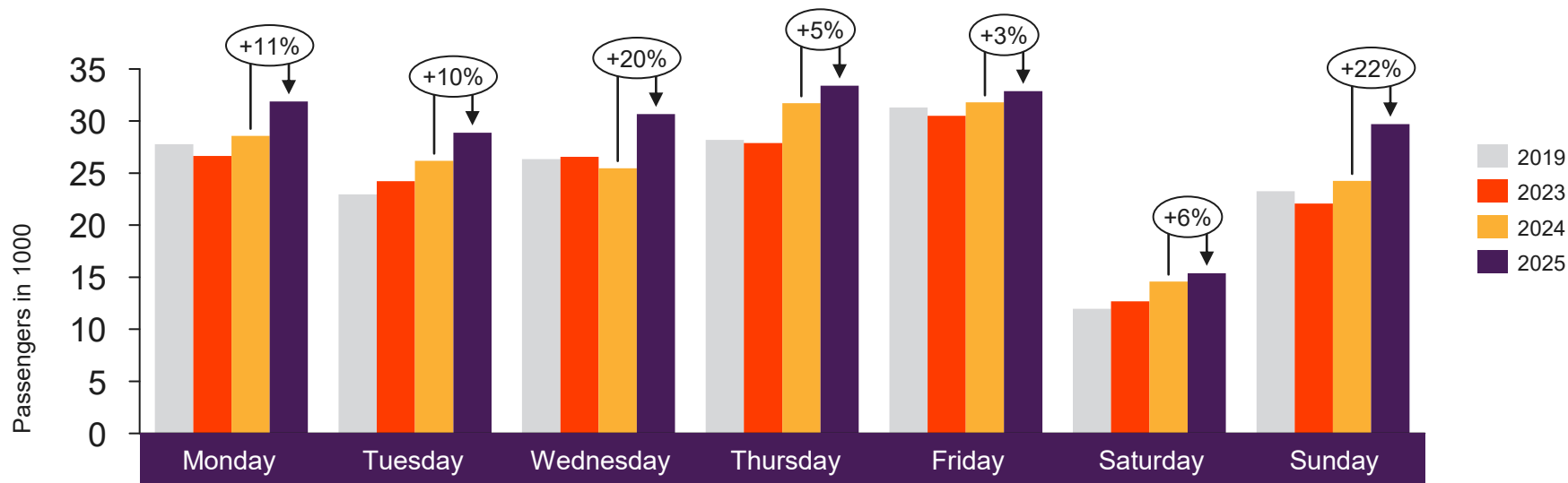


[Return to content page](#)

# Regional and local airports

Total passenger numbers from Alta, Andenes, Bardufoss, Berlevåg, Bodø, Brønnøysund, Båtsfjord, Florø, Førde, Hammerfest, Harstad/Narvik, Hasvik, Honningsvåg, Kirkenes, Kristiansand, Kristiansund, Lakselv, Leknes, Mehamn, Mo i Rana, Molde, Mosjøen, Namsos, Røros, Rørvik, Røst, Sandane, Sandnessjøen, Sogndal, Stokmarknes, Svalbard, Svolvær, Sørkjosen, Tromsø, Vadsø, Vardø, Værøy, Ørsta-Volda and Ålesund

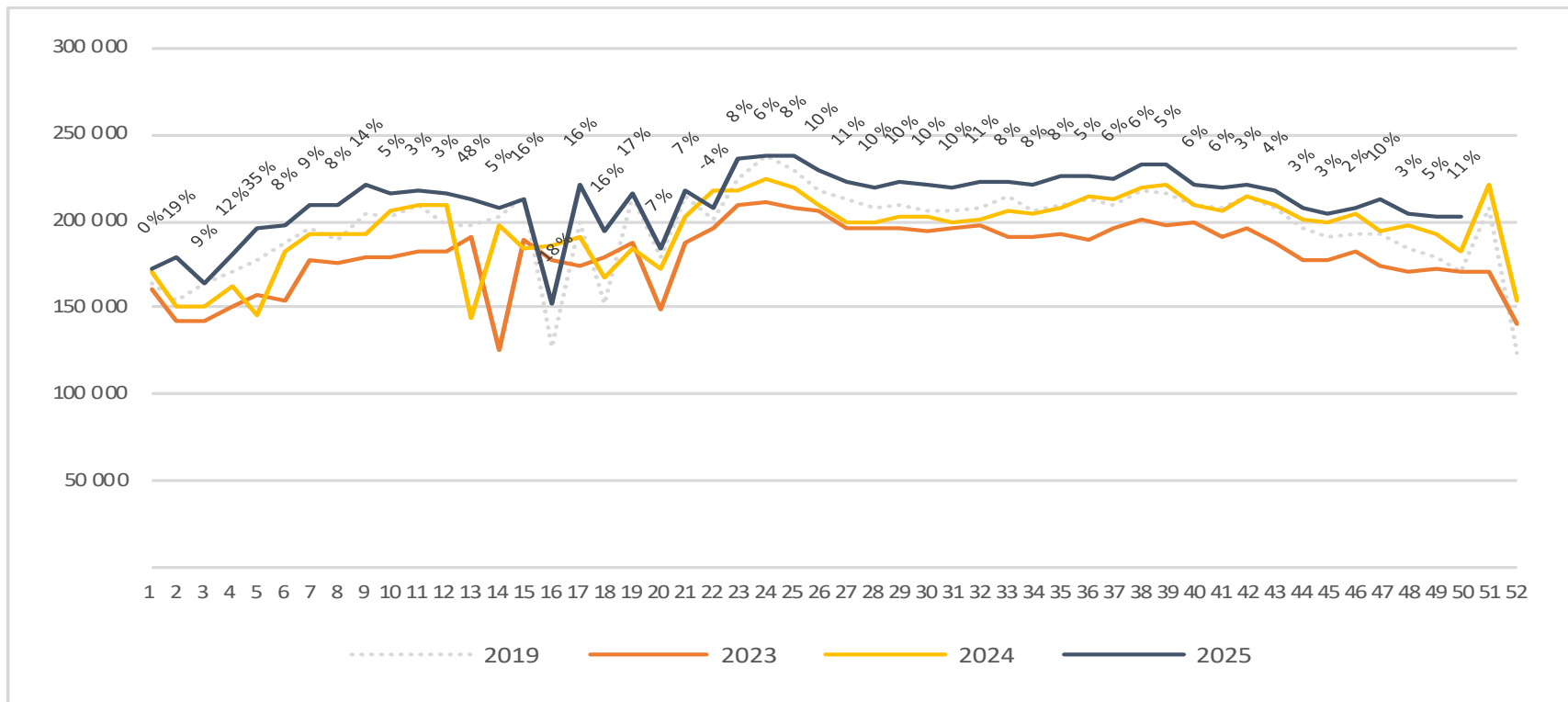
# Passengers Regional and local airports total per day week 50



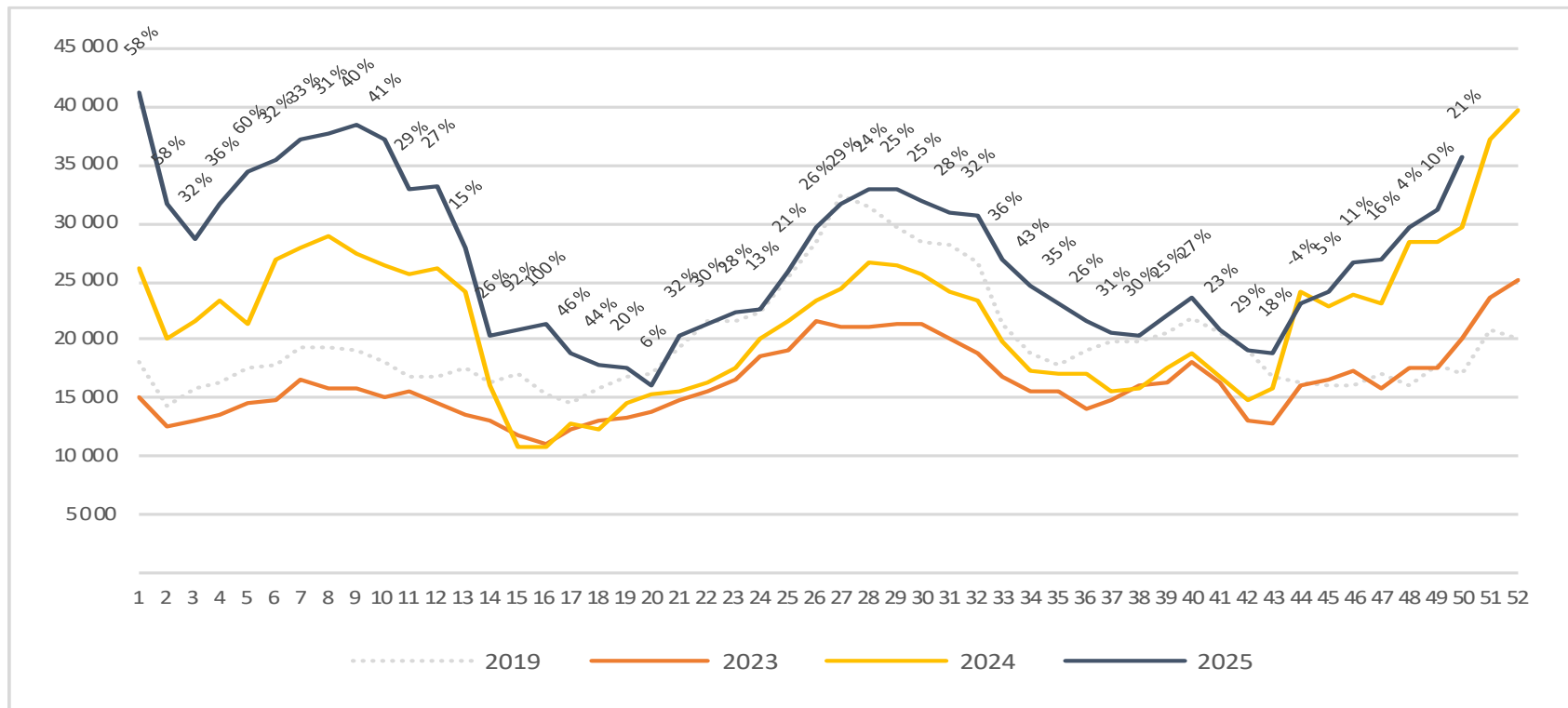
	Monday	Tuesday	Wednesday	Thursday	Friday	Saturday	Sunday
2019	27 779	22 966	26 337	28 178	31 308	11 956	23 267
2023	26 635	24 234	26 562	27 891	30 515	12 687	22 080
2024	28 583	26 189	25 465	31 702	31 790	14 579	24 254
2025	31 869	28 881	30 660	33 406	32 875	15 394	29 708

# Passengers Regional and local airports total per week

The change is measured against the same week last year

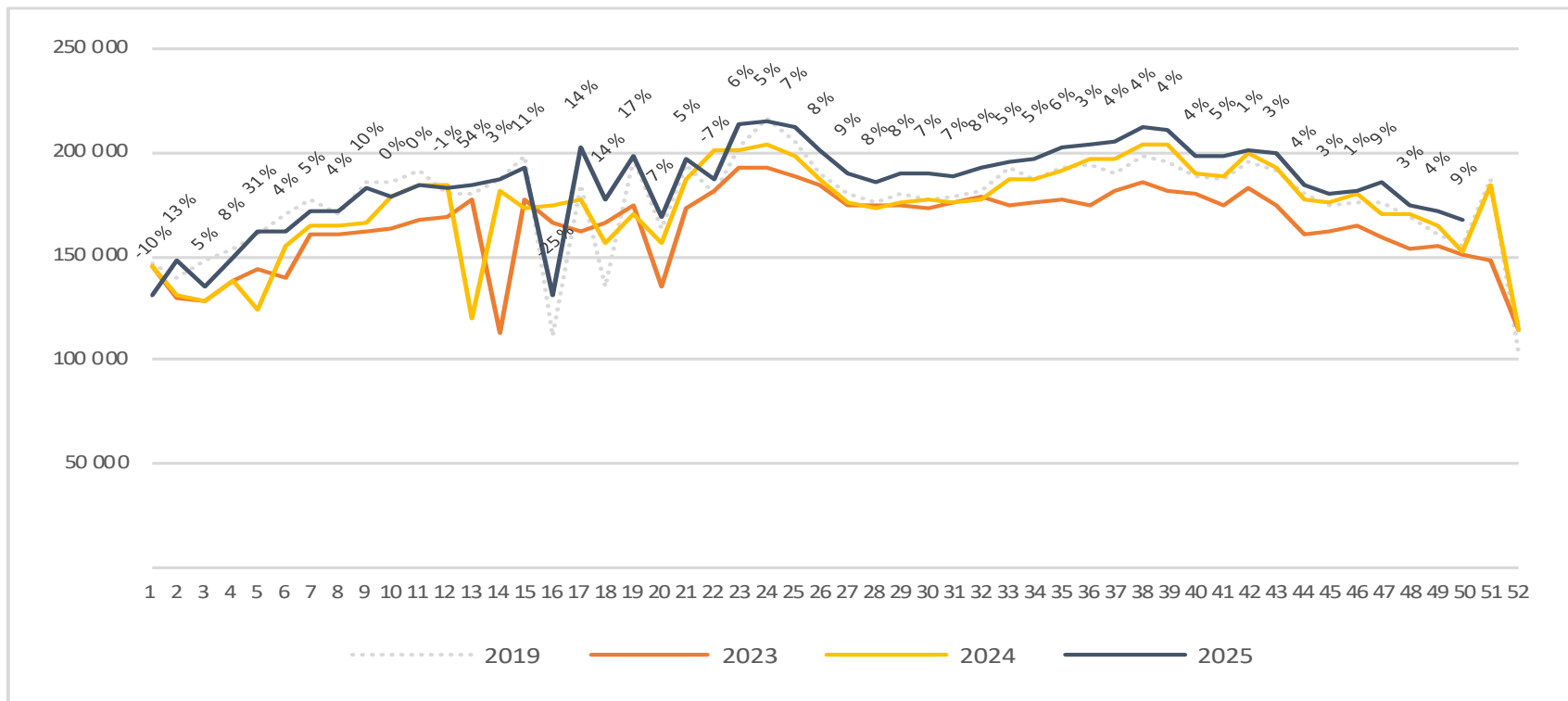


# Passengers Regional and local airports international per week



# Passengers Regional and local airports domestic per week

The change is measured against the same week last year



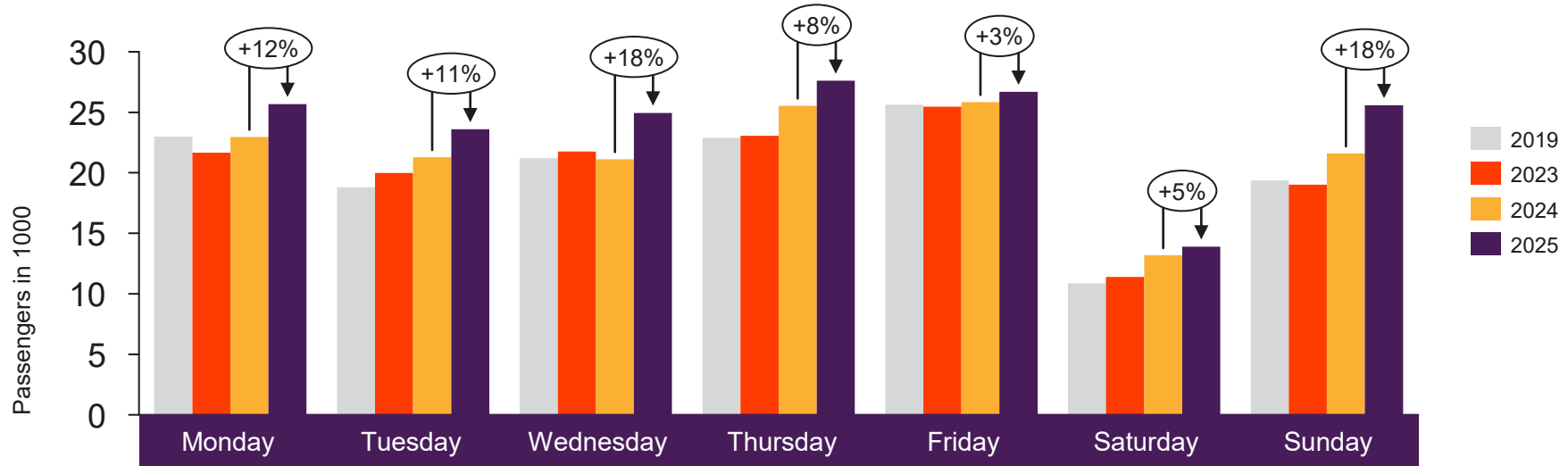


Return to content  
page

# Regional airports

Total passenger numbers from Alta, Bodø, Harstad/Narvik, Kirkenes, Kristiansand, Kristiansund, Molde, Svalbard, Tromsø and Ålesund

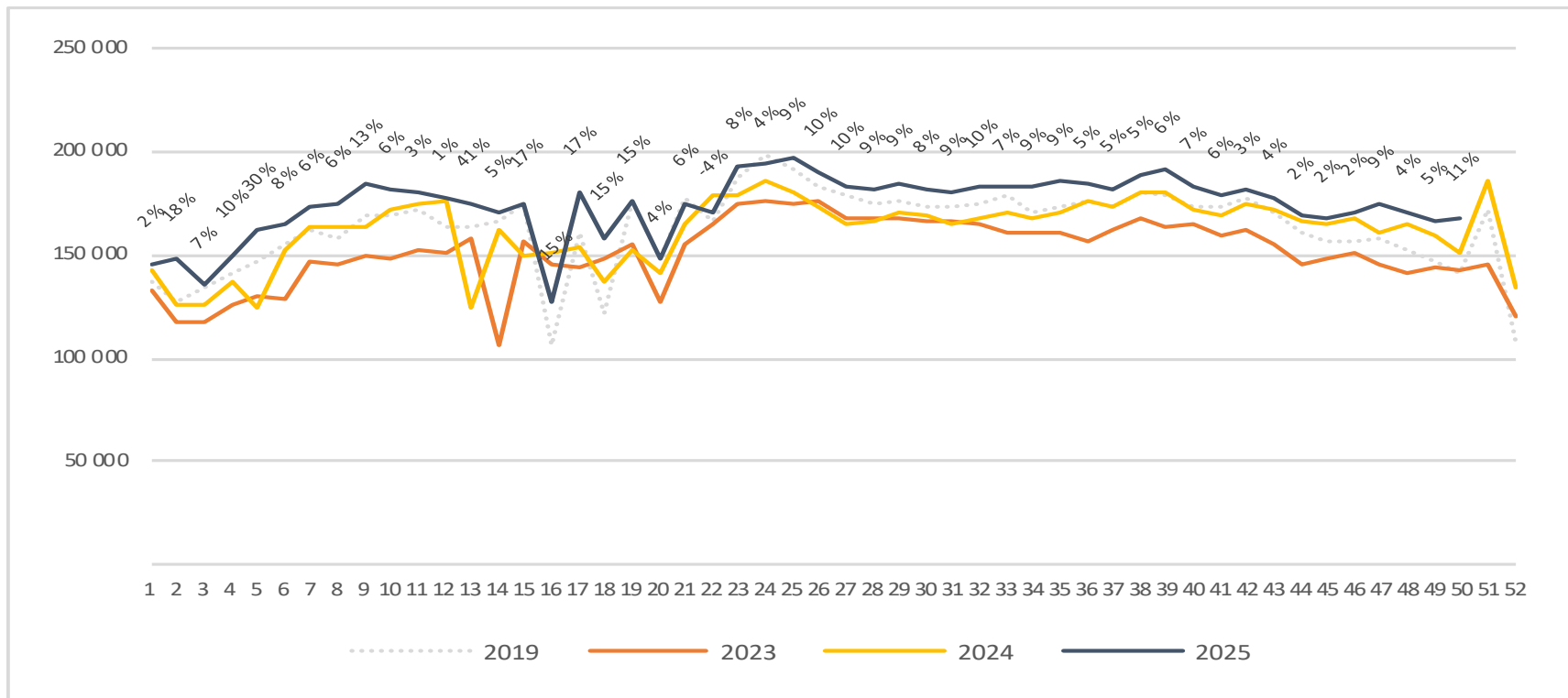
# Passengers Regional airports total per day week 50



2019	22 986	18 810	21 213	22 896	25 638	10 865	19 372
2023	21 657	19 992	21 754	23 054	25 465	11 382	19 016
2024	22 962	21 285	21 127	25 540	25 847	13 188	21 590
2025	25 665	23 585	24 947	27 599	26 682	13 896	25 570

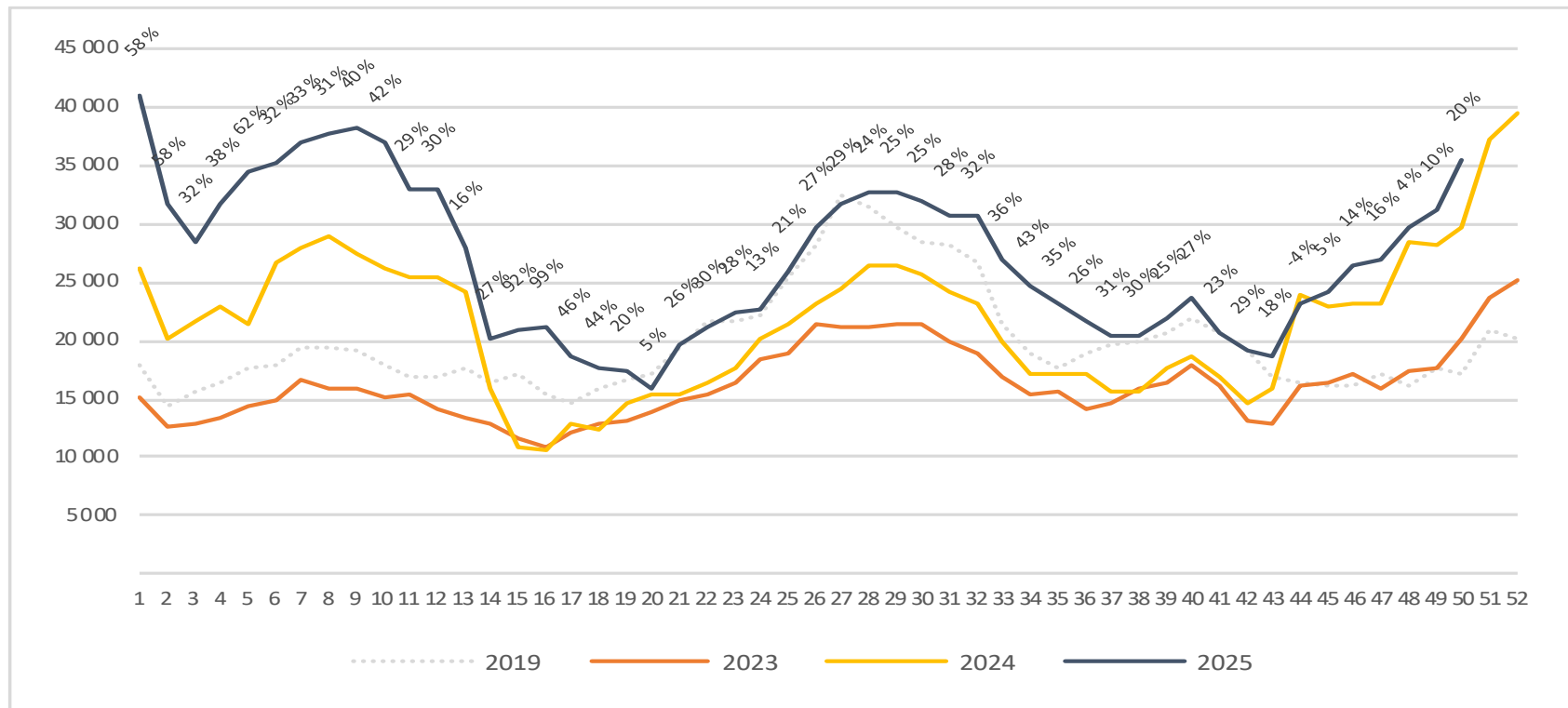
# Passengers Regional airports total per week

The change is measured against the same week last year



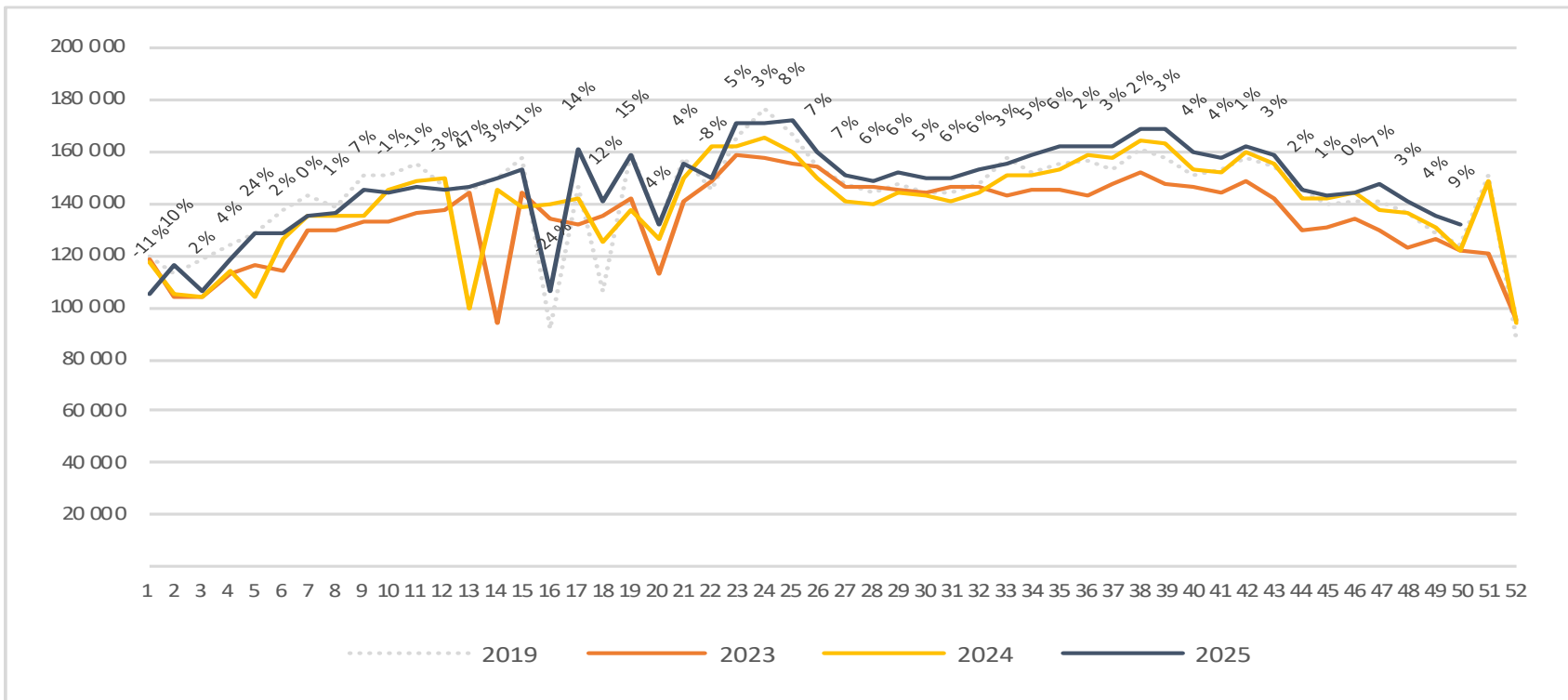
# Passengers Regional airports international per week

The change is measured against the same week last year



# Passengers Regional airports domestic per week

The change is measured against the same week last year



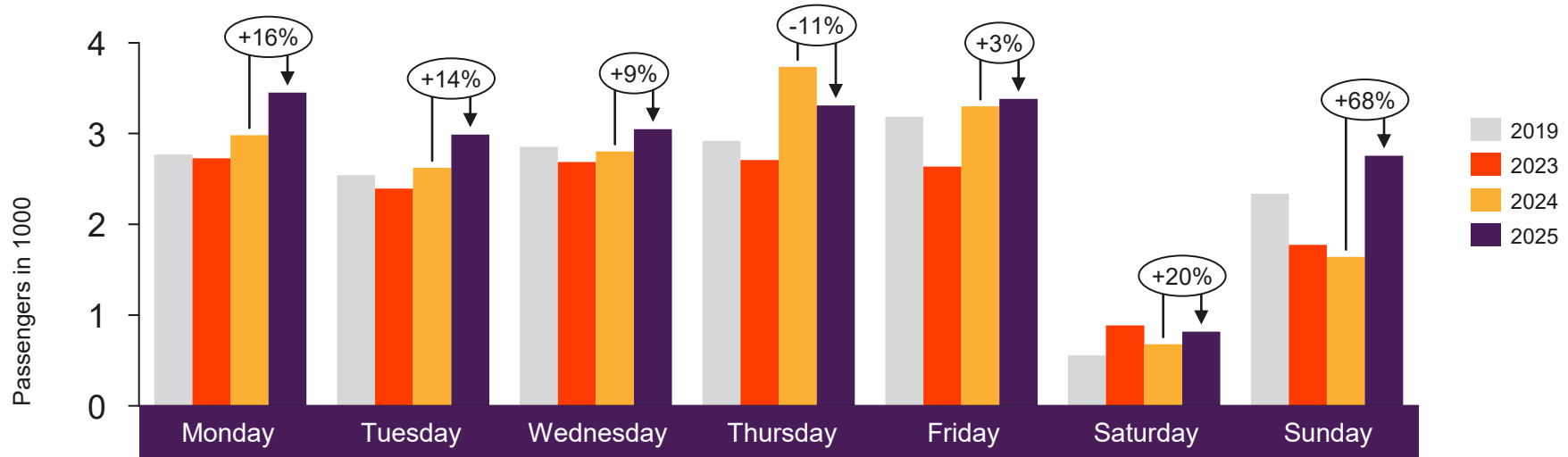


[Return to content  
page](#)

# Local Airports in Trøndelag and Nordland (Local Mid airports)

Total passenger numbers from Andenes, Bardufoss, Brønnøysund, Leknes, Mo i Rana, Mosjøen, Namsos, Rørvik, Røst, Sandnessjøen, Stokmarknes, Svolvær and Værøy

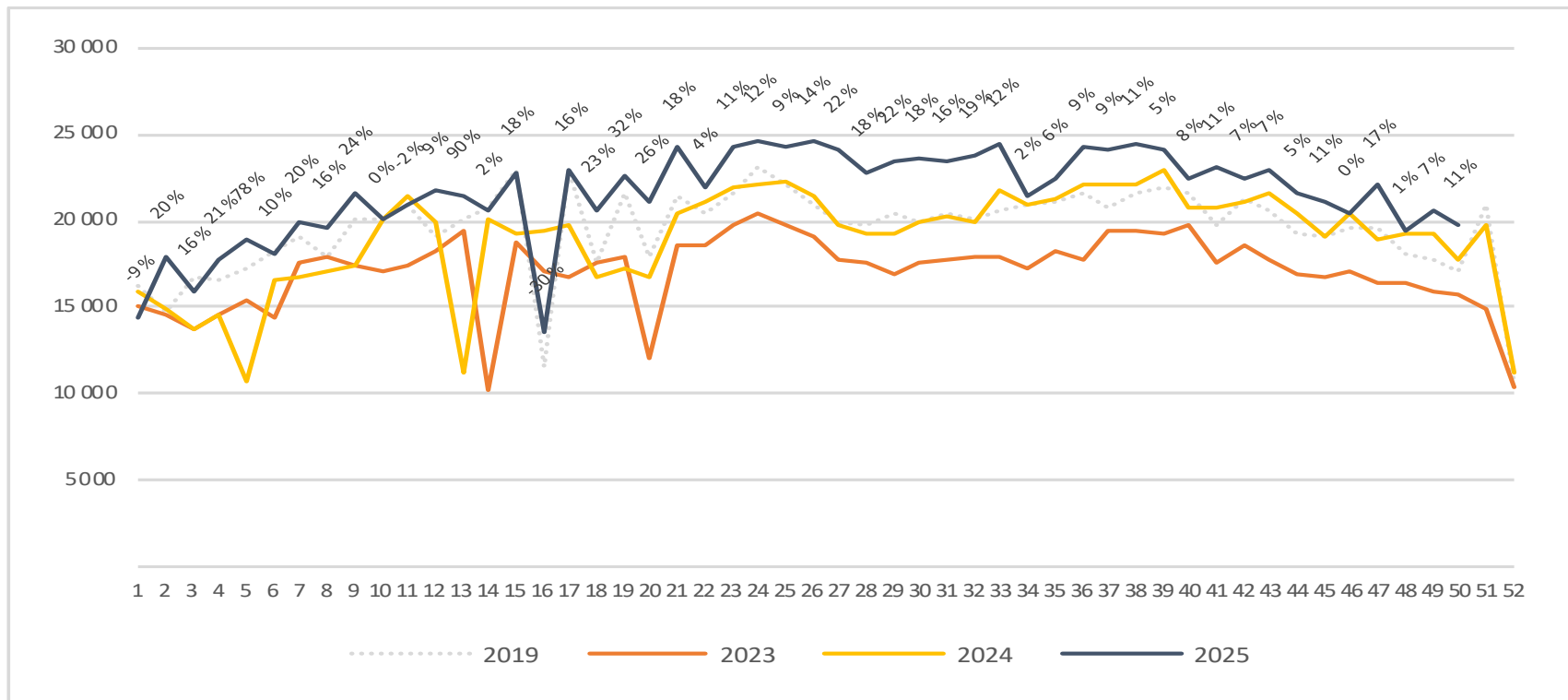
# Passengers Local Mid airports total per day week 50



2019	2 767	2 541	2 853	2 920	3 185	557	2 338
2023	2 727	2 394	2 687	2 708	2 635	885	1 774
2024	2 982	2 623	2 803	3 734	3 299	679	1 643
2025	3 450	2 989	3 050	3 311	3 382	817	2 757

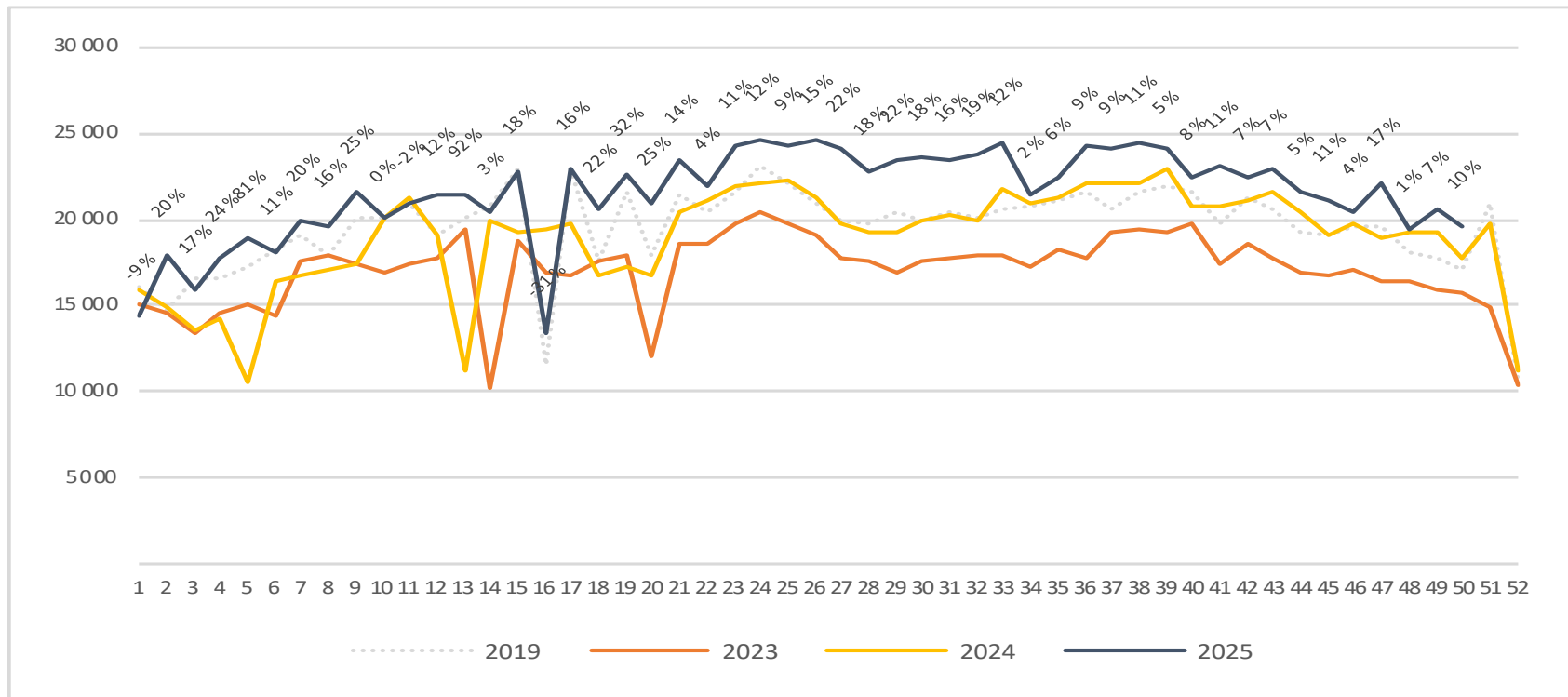
# Passengers Local Mid airports total per week

The change is measured against the same week last year



# Passengers Local Mid airports domestic per week

The change is measured against the same week last year



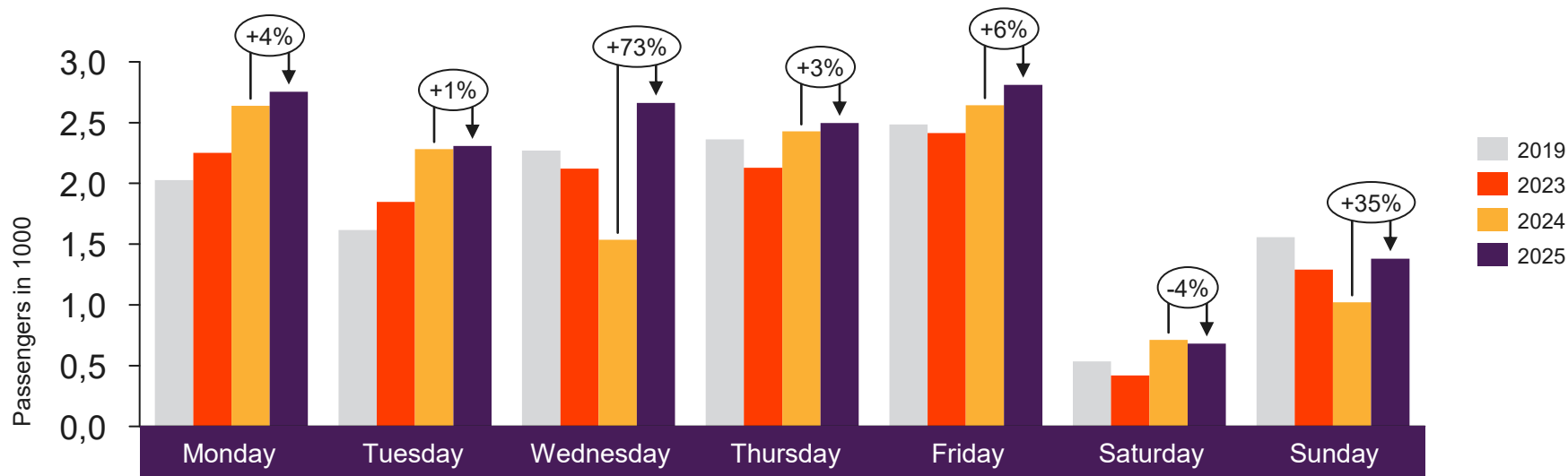


[Return to content  
page](#)

# Local airports on the West coast and in Troms and Finnmark

Total passenger numbers from Berlevåg, Båtsfjord, Florø, Førde, Hammerfest, Hasvik, Honningsvåg, Lakselv, Mehamn, Røros, Sandane, Sogndal, Sørkjosen, Vadsø, Vardø and Ørsta-Volda

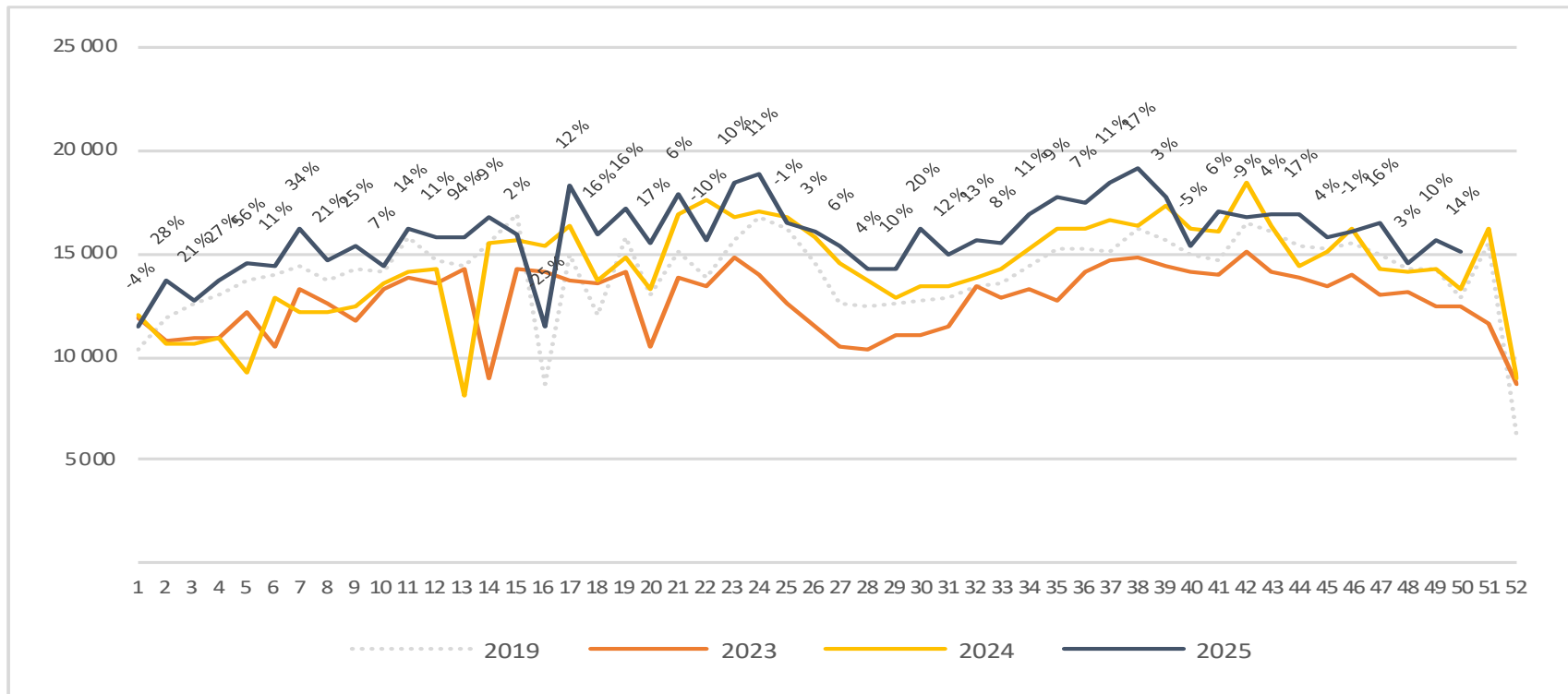
# Passengers local airports on the West coast and in Troms and Finnmark total per day week 50



2019	2 026	1 615	2 271	2 362	2 485	534	1 557
2023	2 251	1 848	2 121	2 129	2 415	420	1 290
2024	2 639	2 281	1 535	2 428	2 644	712	1 021
2025	2 754	2 307	2 663	2 496	2 811	681	1 381

# Passengers local airports on the West coast and in Troms and Finnmark total per week

The change is measured against the same week last year



# Passengers local airports on the West coast and in Troms and Finnmark domestic per week

The change is measured against the same week last year

