



Passenger numbers per week

Preliminary figures

- The figures for the previous week are preliminary. It takes some time for all passenger numbers to be reported, so the figures for the previous week may be lower than the final figures.
- The figures are from SIA, Avinor's traffic database.

Content

- Top 10 airports
- Avinor total
- Selected airports
- The 4 biggest airports
- Regional and local airports
 - Regional airports
 - Local airports in Trøndelag and Nordland
 - Local airports on the west coast of Norway and in Troms and Finnmark

Top 10 airports, total, week 49

Airport	2019	2023	2024	2025	2025 vs. 2024	
					Change	Change %
Oslo	474 612	407 999	438 005	445 188	7 183	2 %
Bergen	107 944	108 418	108 979	110 012	1 033	1 %
Trondheim	74 831	70 278	72 261	72 996	735	1 %
Stavanger	77 111	67 754	68 211	67 297	-914	-1 %
Tromsø	43 230	46 222	60 274	63 744	3 470	6 %
Bodø	28 618	29 456	31 115	32 934	1 819	6 %
Ålesund	19 496	18 312	17 124	17 173	49	0 %
Kristiansand	18 934	13 779	13 828	14 891	1 063	8 %
Harstad/Narvik	11 519	12 204	12 226	13 054	828	7 %
Alta	5 372	5 502	6 392	6 688	296	5 %

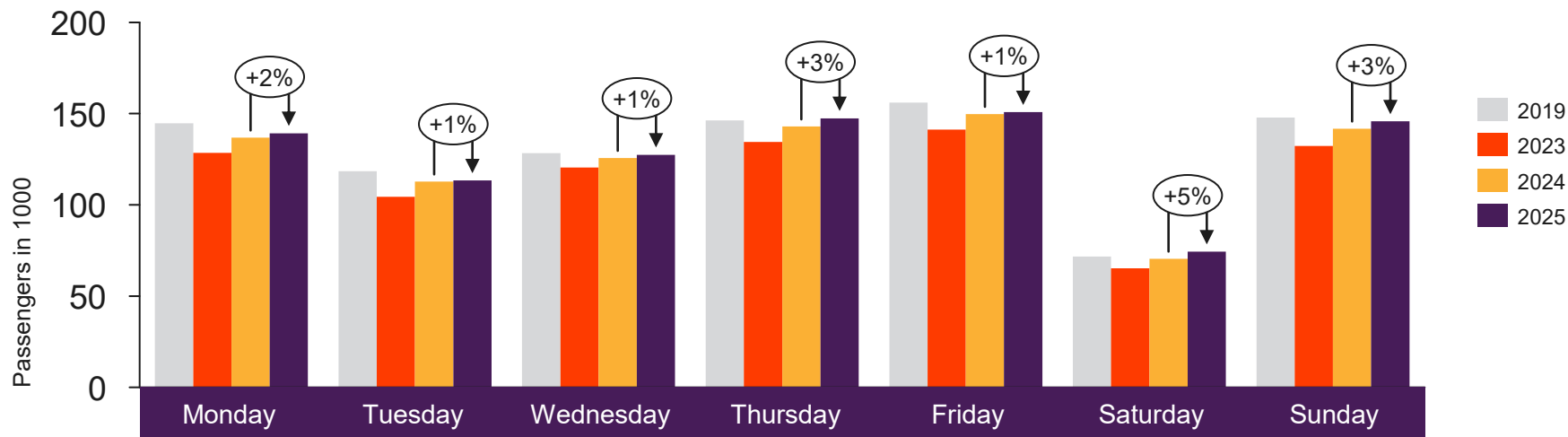


[Return to content
page](#)

Avinor total

Passenger numbers for all Avinor airports

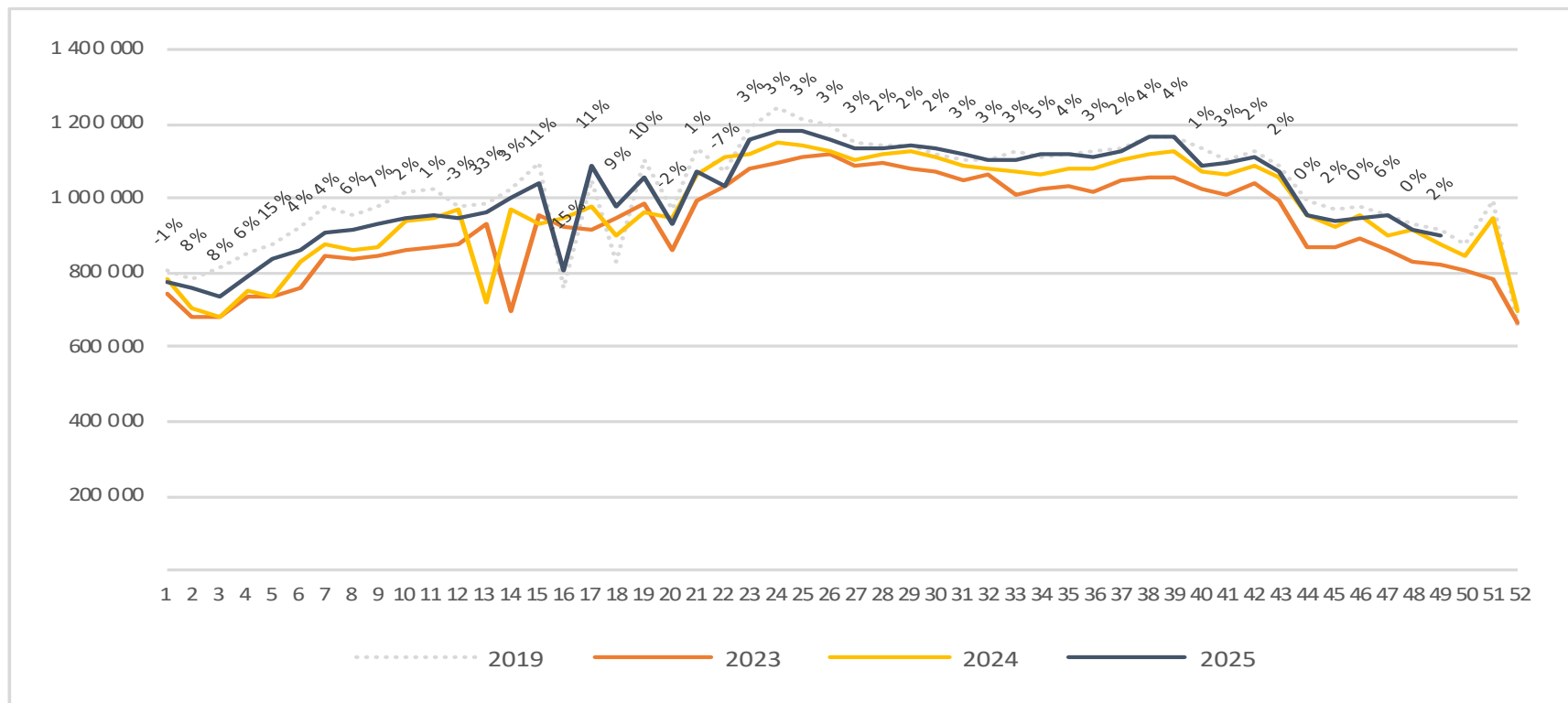
Passengers Avinor total per day week 49



	Monday	Tuesday	Wednesday	Thursday	Friday	Saturday	Sunday
2019	144 747	118 431	128 380	146 226	156 094	71 700	147 849
2023	128 532	104 382	120 439	134 489	141 207	65 203	132 272
2024	136 896	112 758	125 675	142 967	149 815	70 498	141 798
2025	139 279	113 481	127 486	147 469	150 883	74 372	145 815

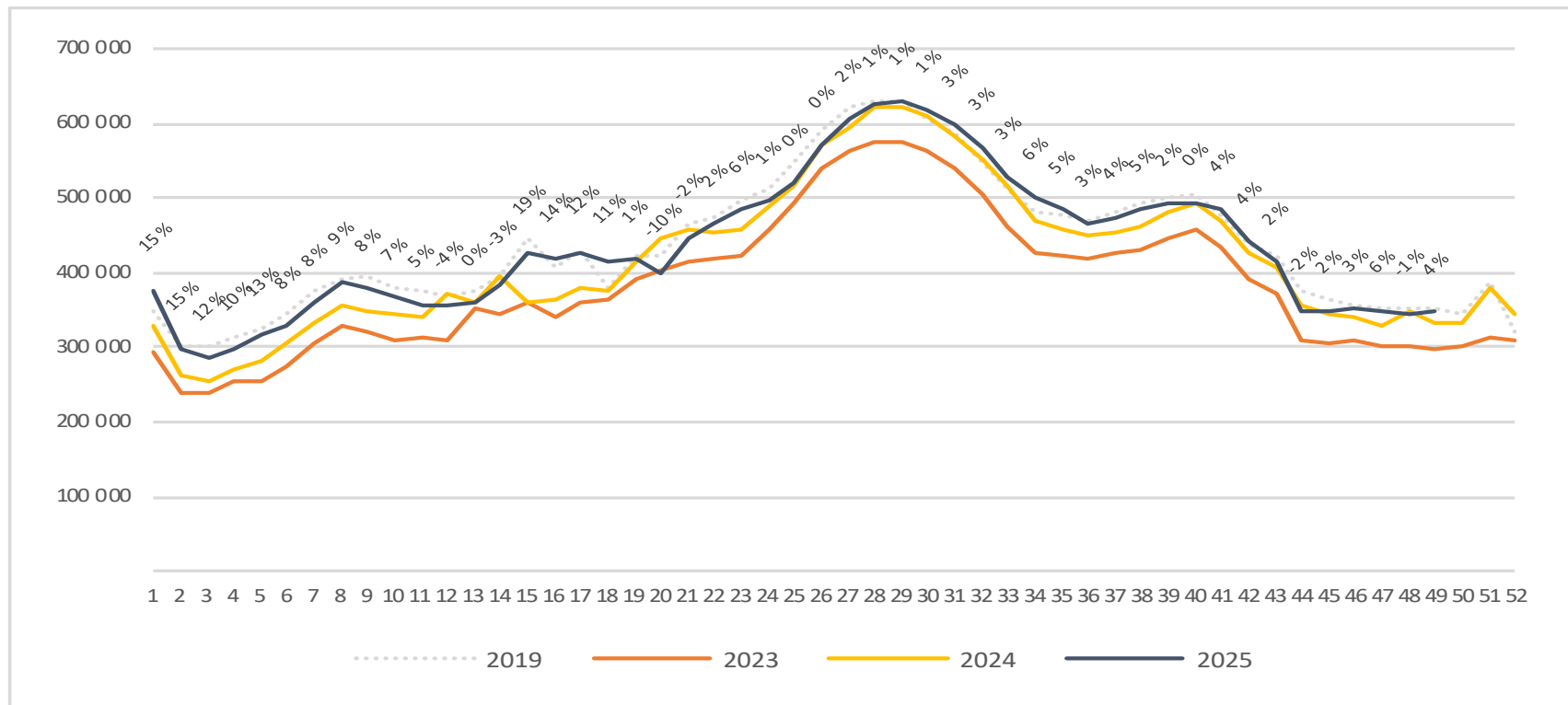
Passengers Avinor total per week

The change is measured against the same week last year



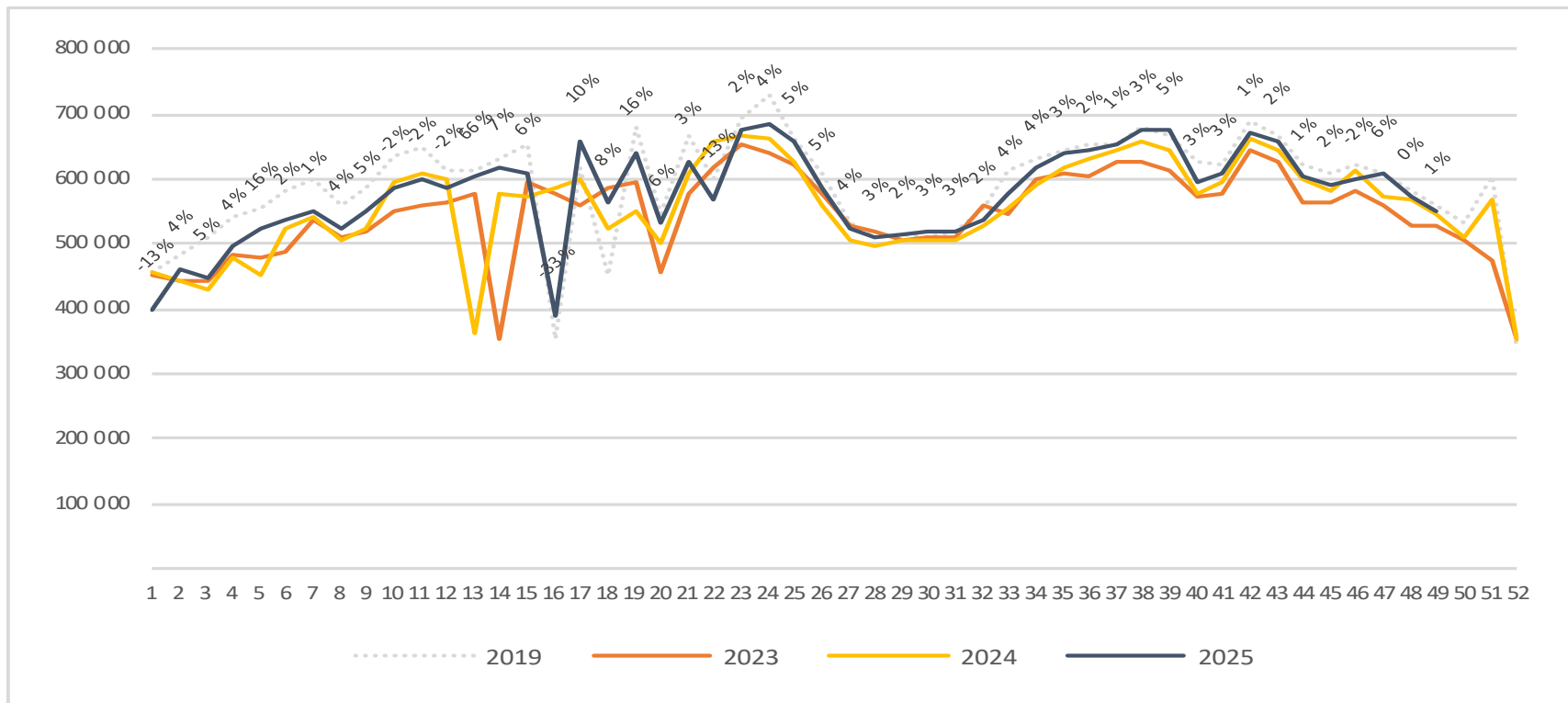
Passengers Avinor international per week

The change is measured against the same week last year



Passengers Avinor domestic per week

The change is measured against the same week last year

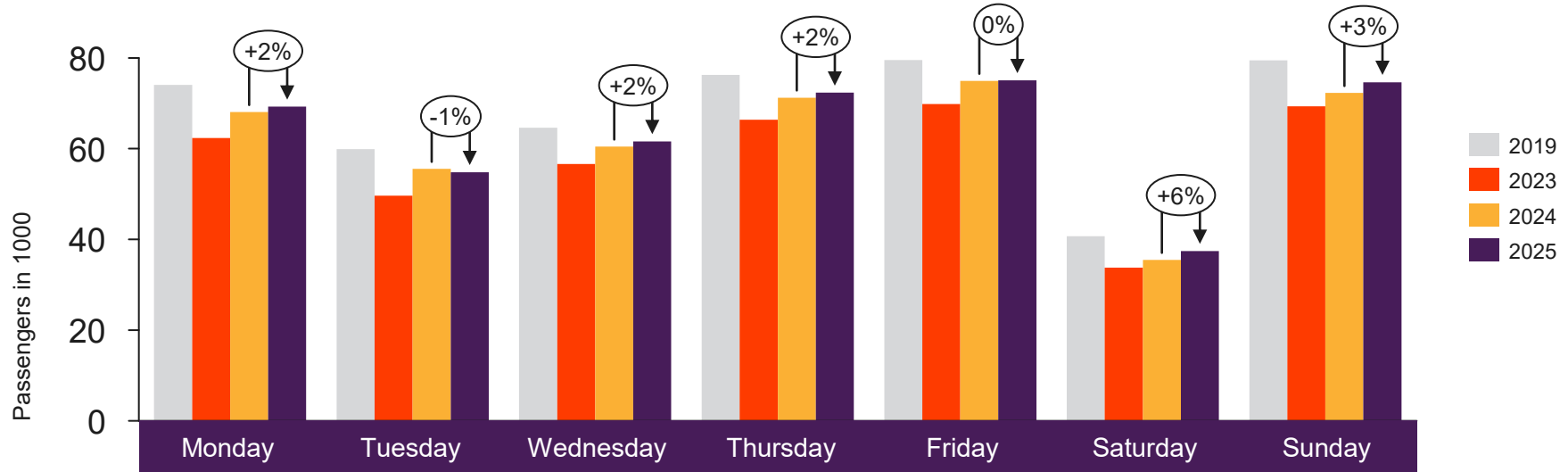




[Return to content page](#)

Selected airports

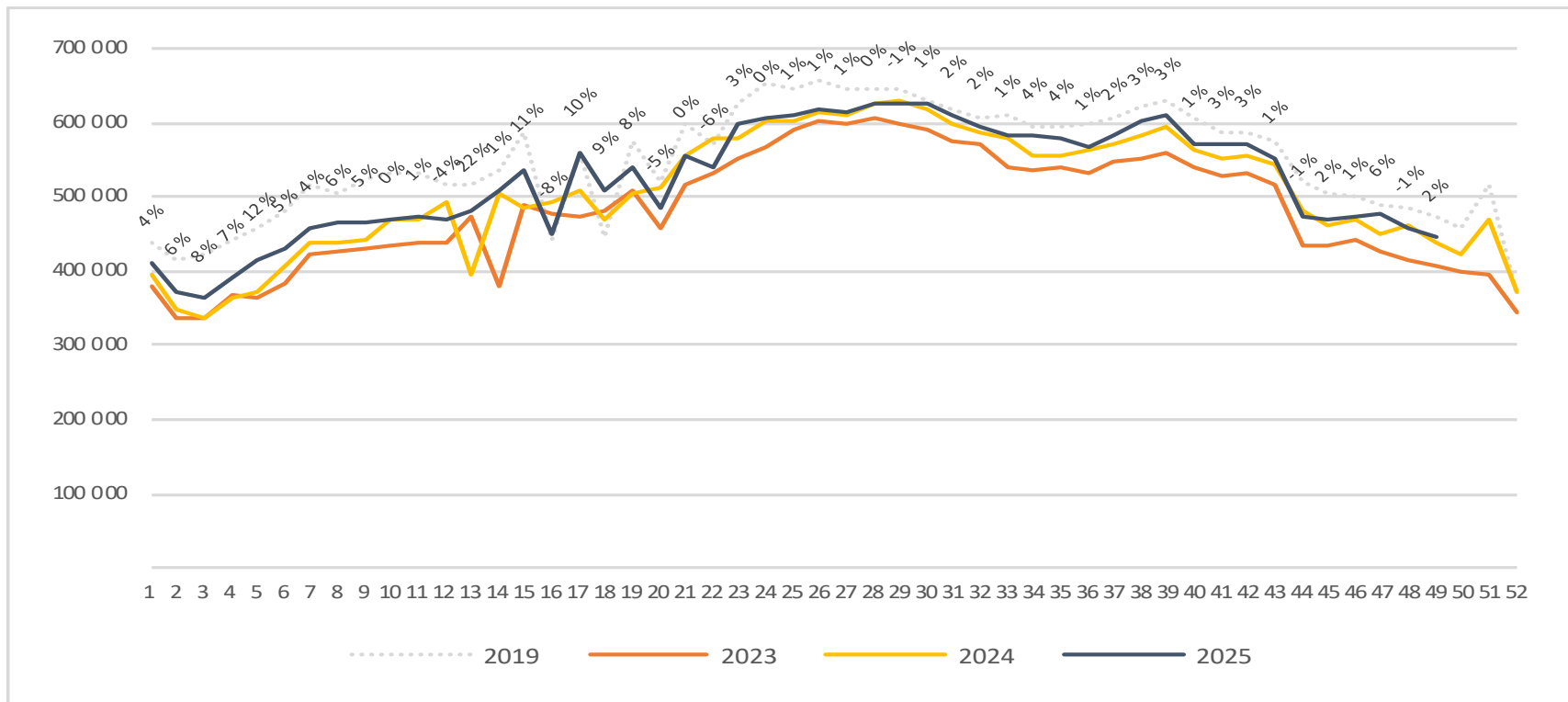
Passengers OSL total per day week 49



	Monday	Tuesday	Wednesday	Thursday	Friday	Saturday	Sunday
2019	74 046	59 898	64 651	76 277	79 514	40 719	79 507
2023	62 343	49 628	56 627	66 396	69 874	33 784	69 347
2024	68 062	55 568	60 465	71 250	74 925	35 454	72 281
2025	69 273	54 804	61 627	72 339	75 078	37 410	74 657

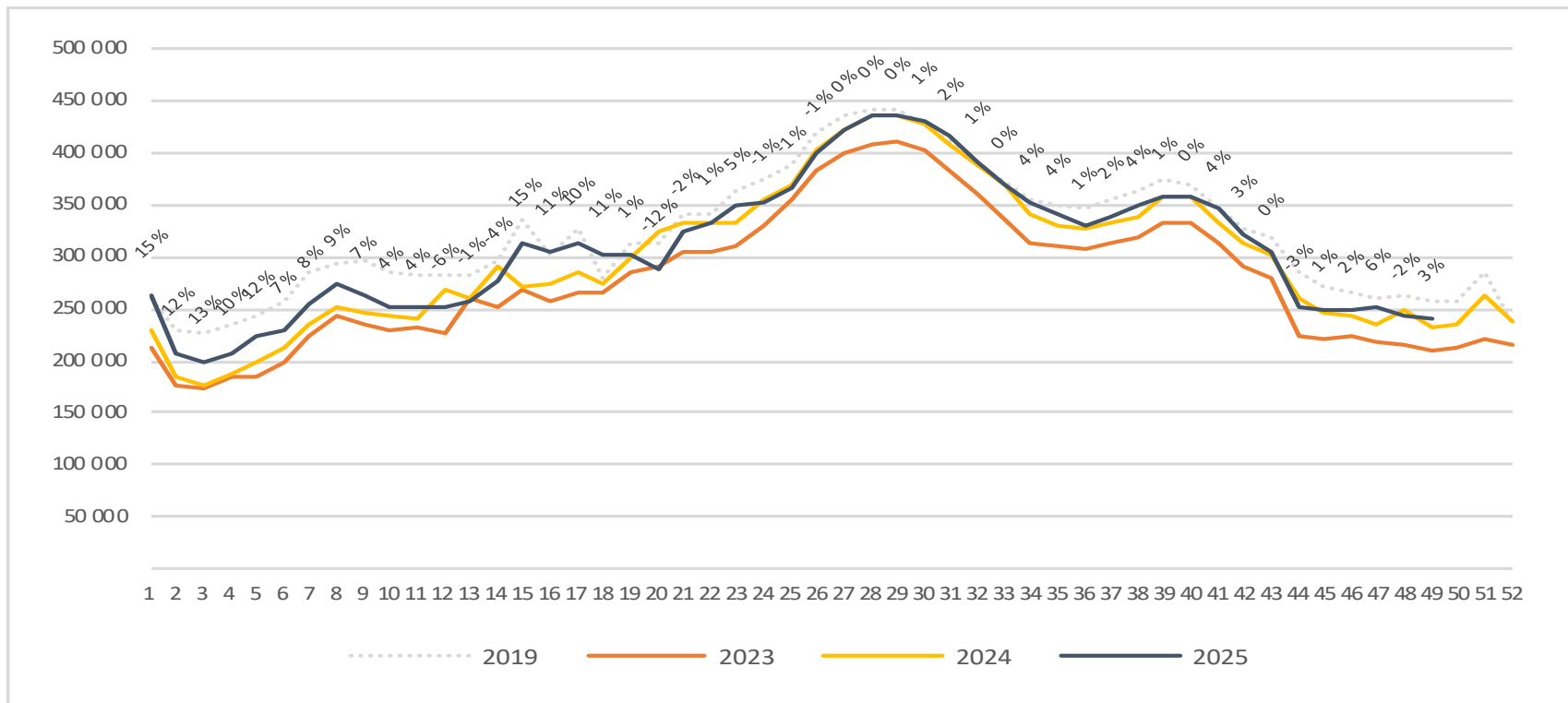
Passengers OSL total per week

The change is measured against the same week last year



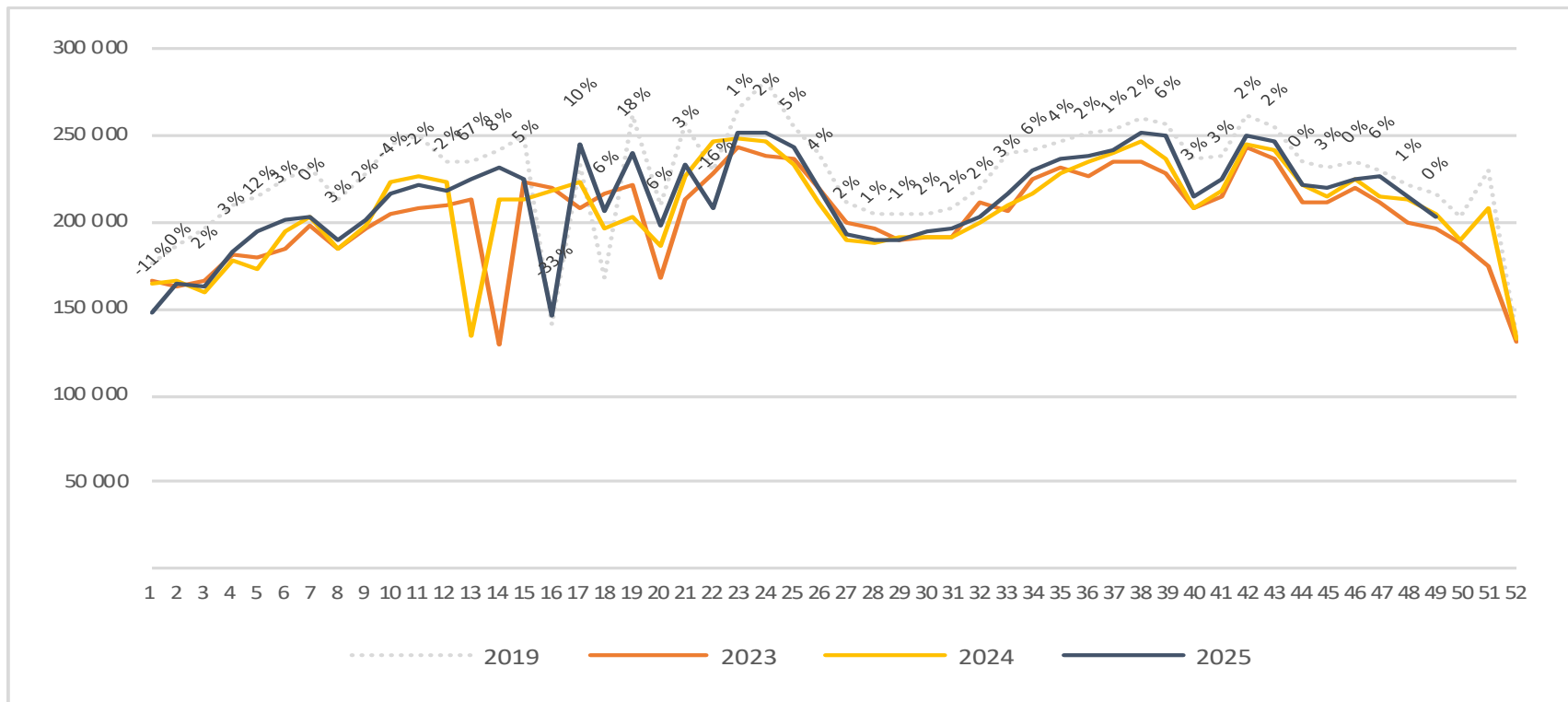
Passengers OSL international per week

The change is measured against the same week last year

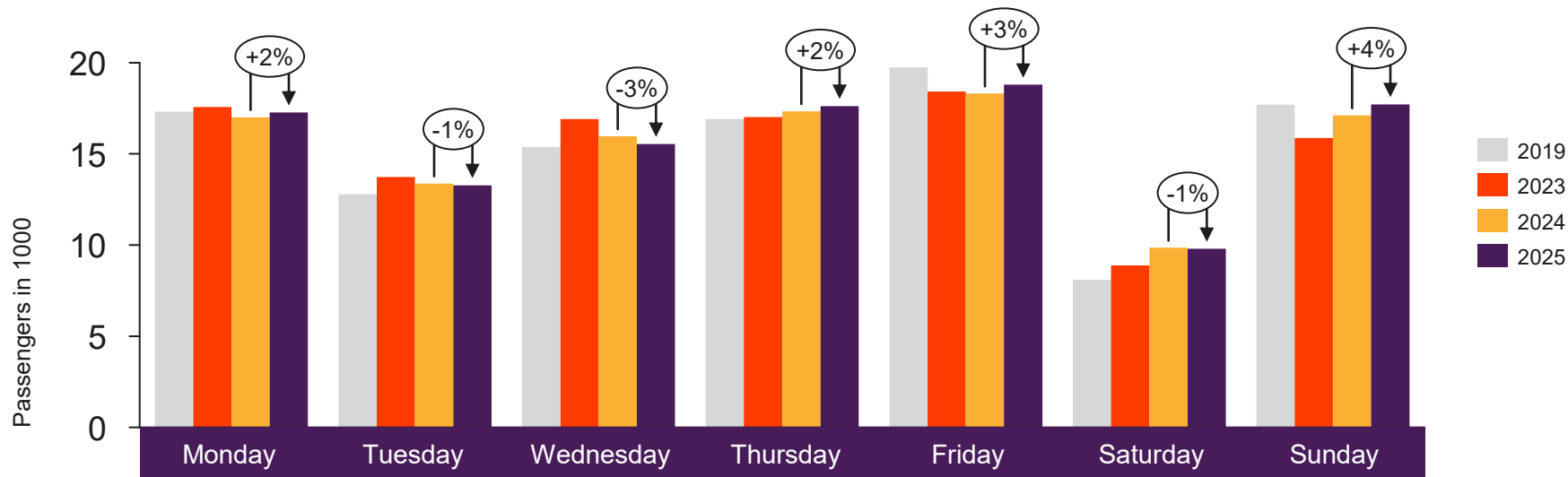


Passengers OSL domestic per week

The change is measured against the same week last year



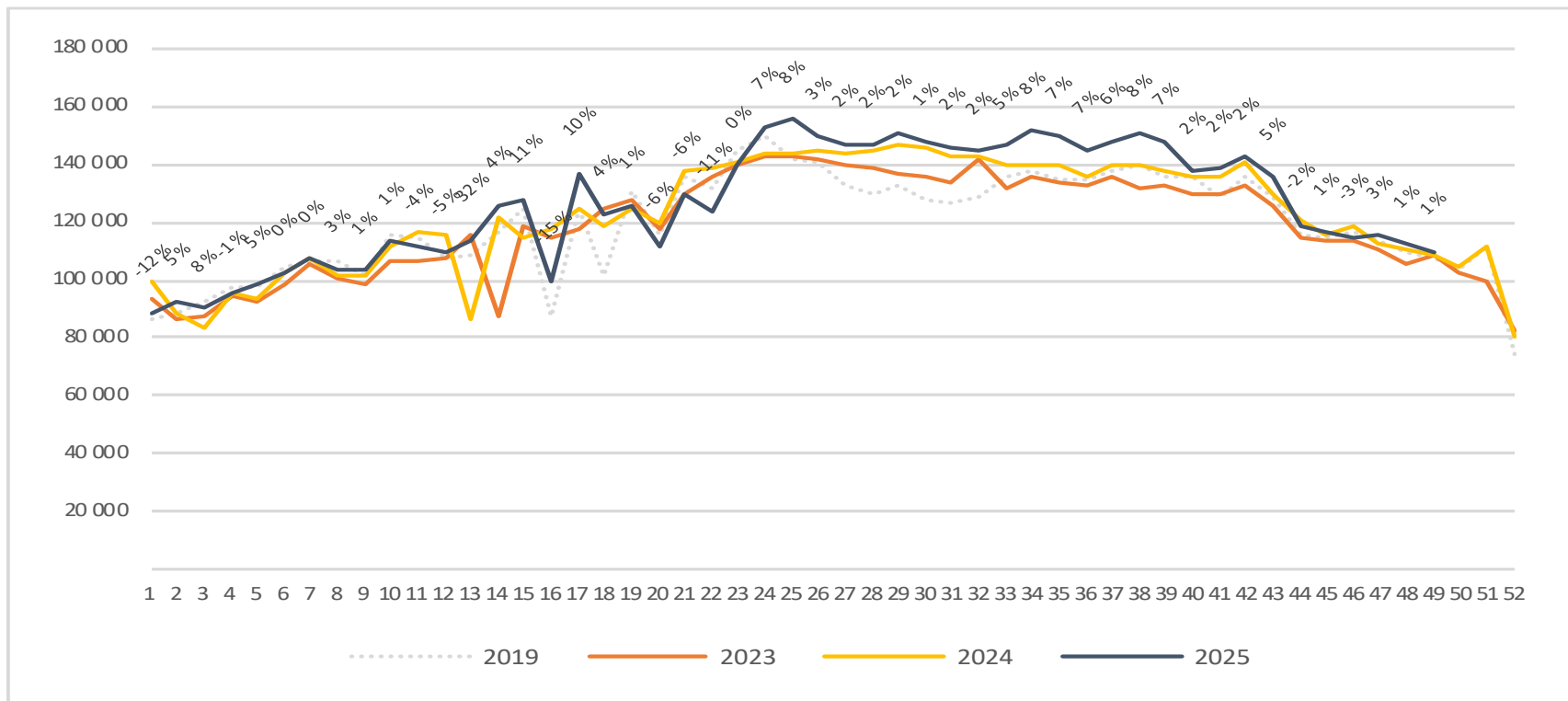
Passengers BGO total per day week 49



	Monday	Tuesday	Wednesday	Thursday	Friday	Saturday	Sunday
2019	17 325	12 782	15 388	16 907	19 749	8 094	17 699
2023	17 568	13 731	16 911	17 019	18 426	8 892	15 871
2024	17 013	13 377	15 973	17 337	18 311	9 856	17 112
2025	17 269	13 273	15 539	17 624	18 794	9 793	17 720

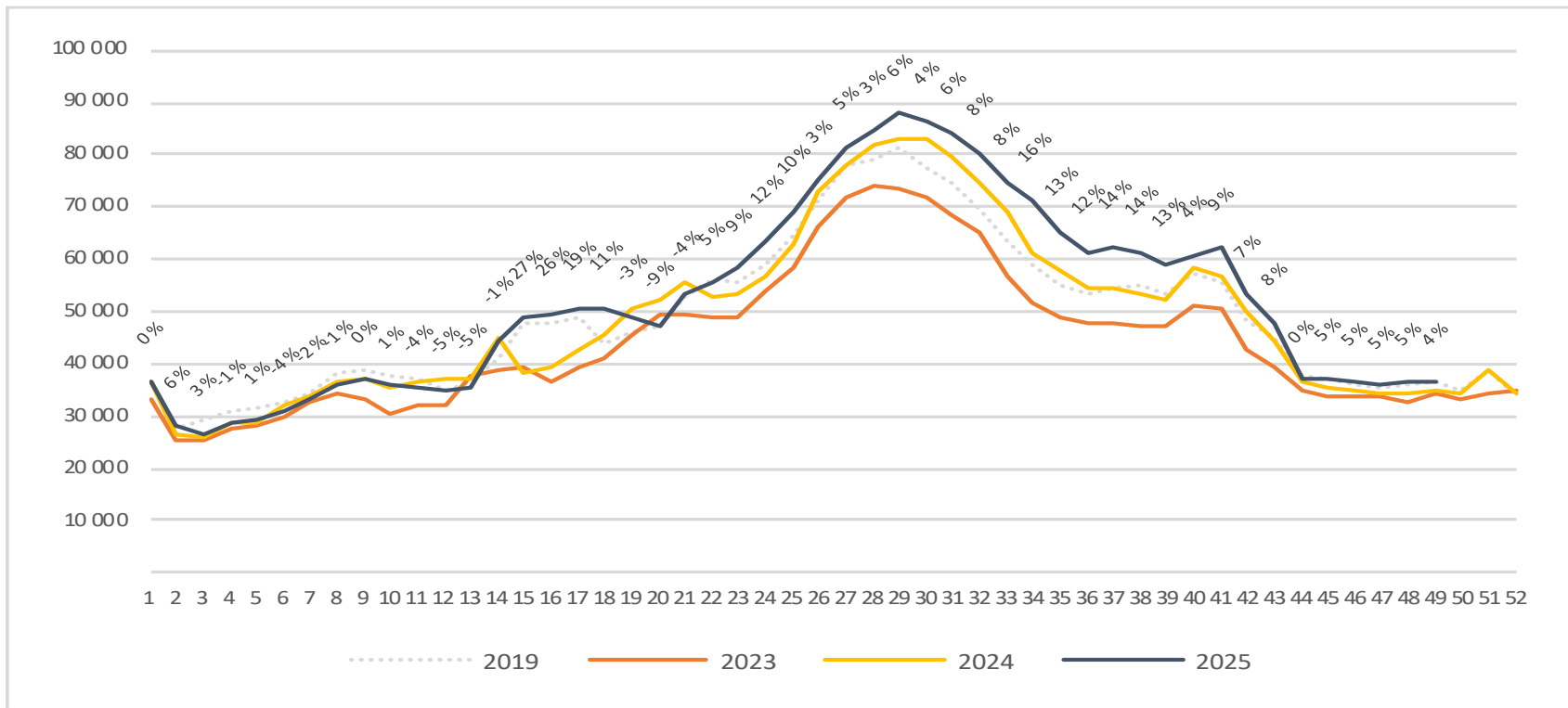
Passengers BGO total per week

The change is measured against the same week last year

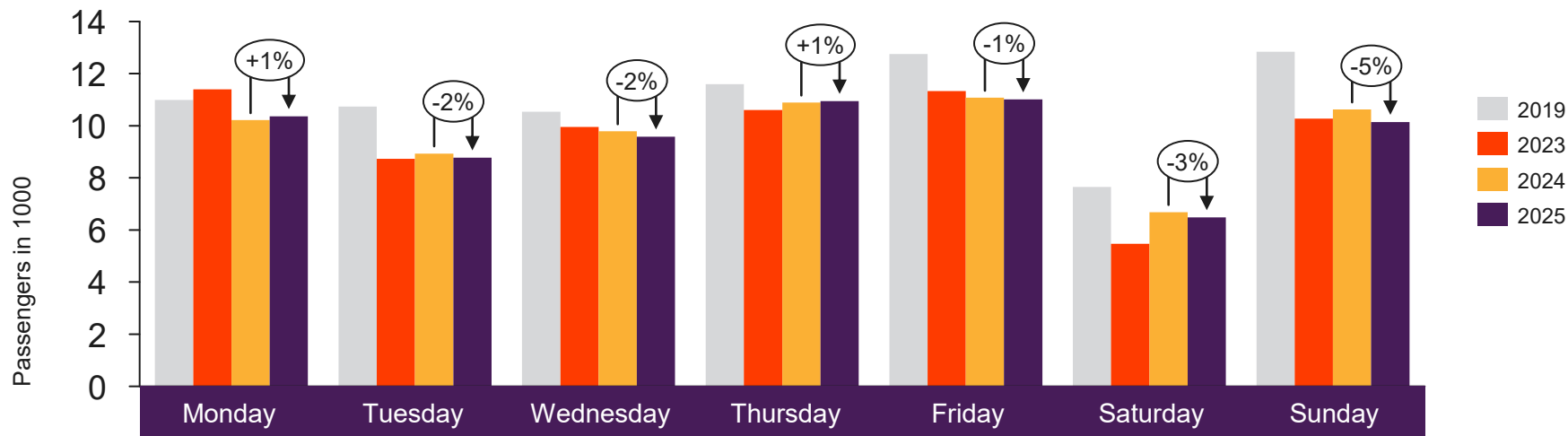


Passengers BGO international per week

The change is measured against the same week last year



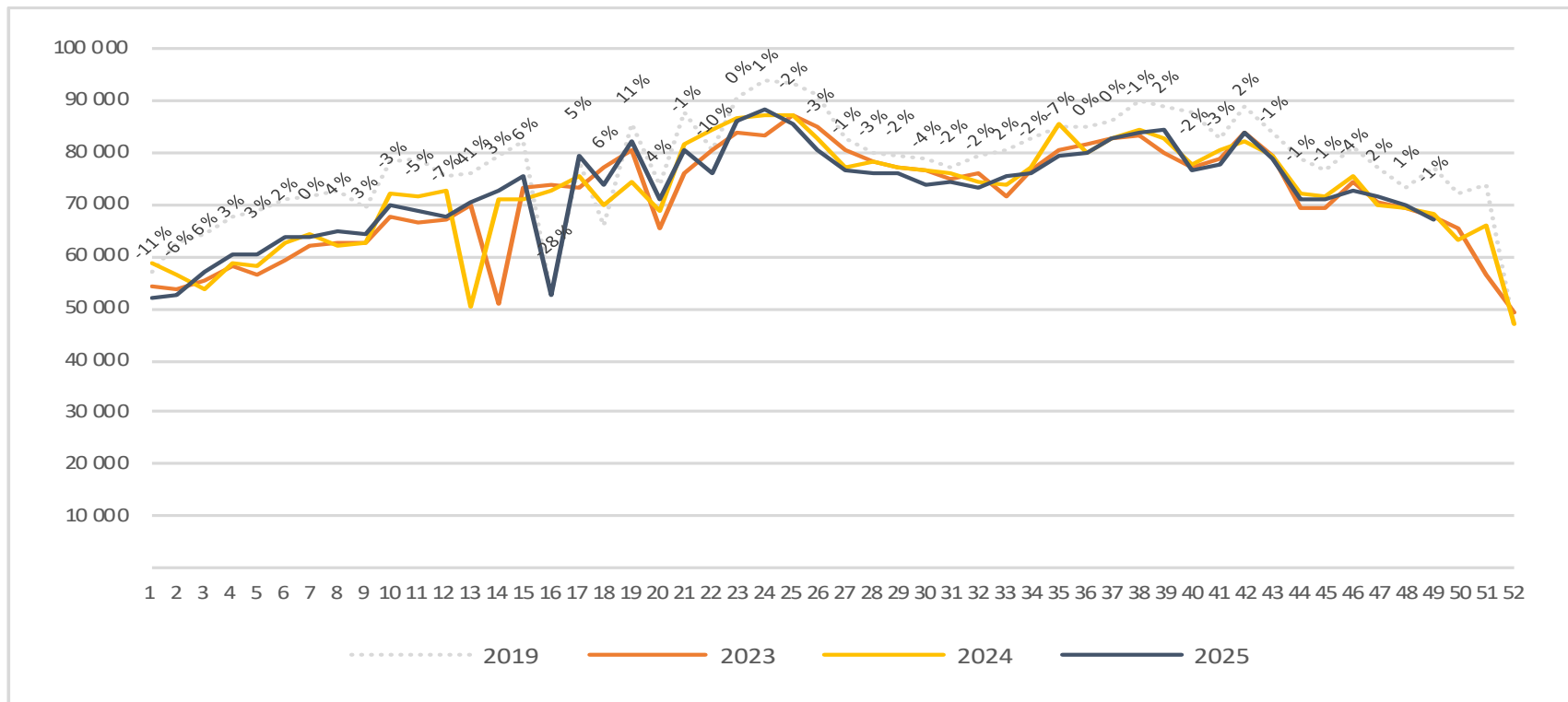
Passengers SVG total per day week 49



	Monday	Tuesday	Wednesday	Thursday	Friday	Saturday	Sunday
2019	10 993	10 741	10 533	11 600	12 748	7 653	12 843
2023	11 396	8 729	9 958	10 600	11 326	5 473	10 272
2024	10 215	8 935	9 790	10 887	11 075	6 687	10 622
2025	10 366	8 779	9 579	10 943	11 010	6 481	10 139

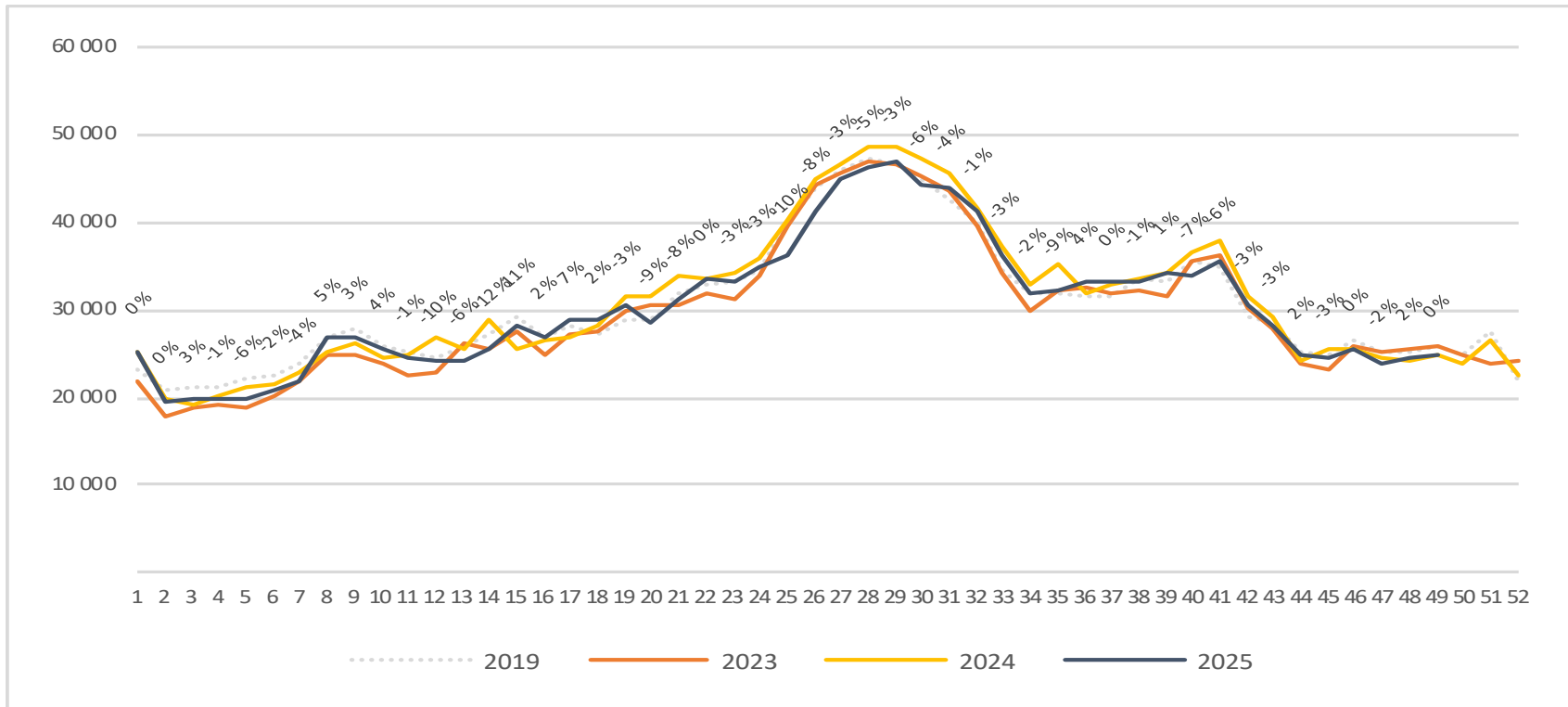
Passengers SVG total per week

The change is measured against the same week last year



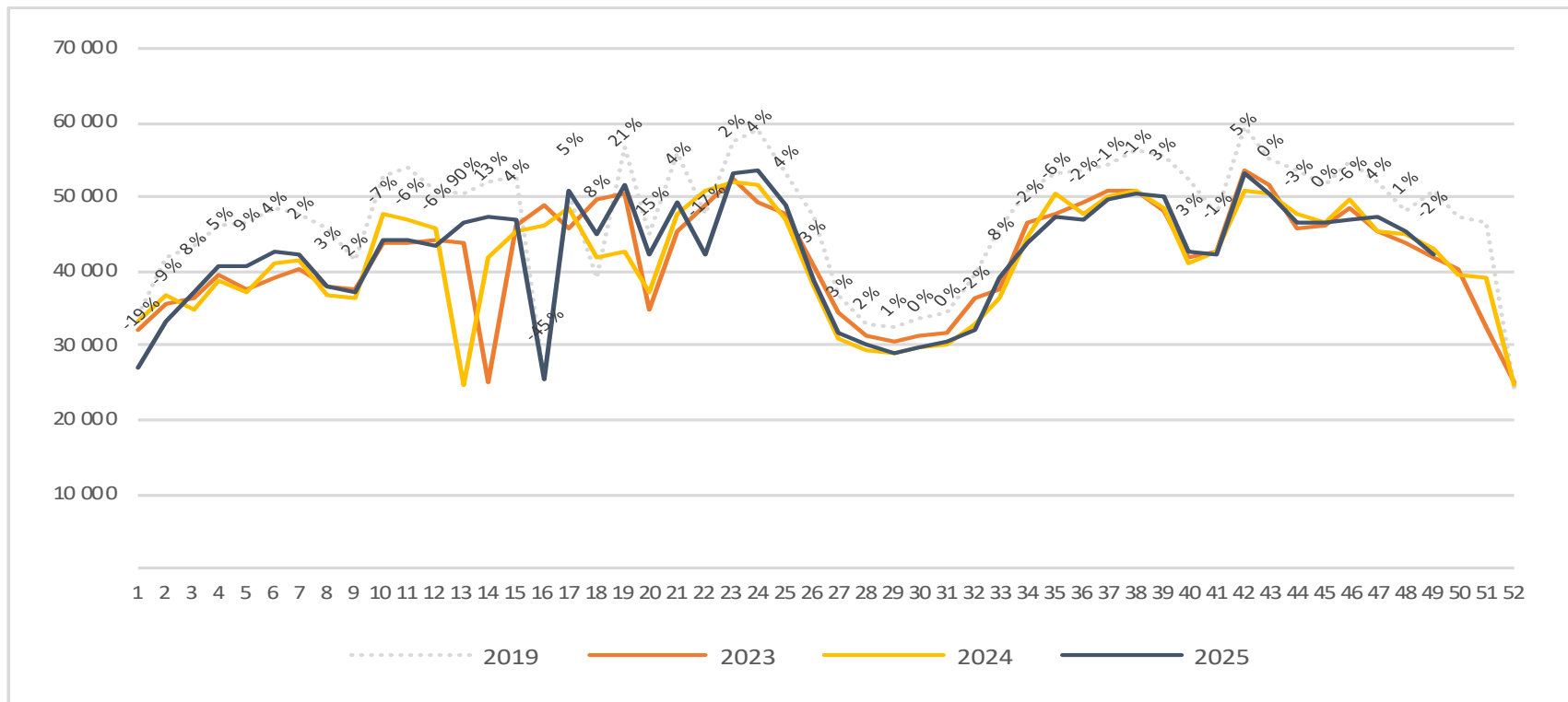
Passengers SVG international per week

The change is measured against the same week last year

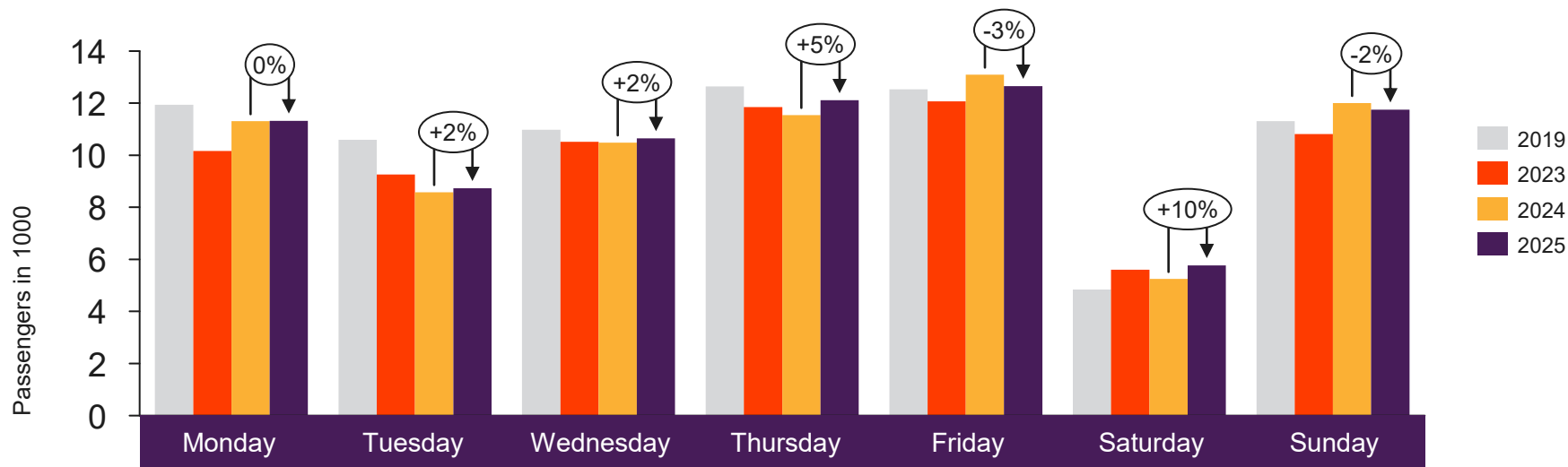


Passengers SVG domestic per week

The change is measured against the same week last year



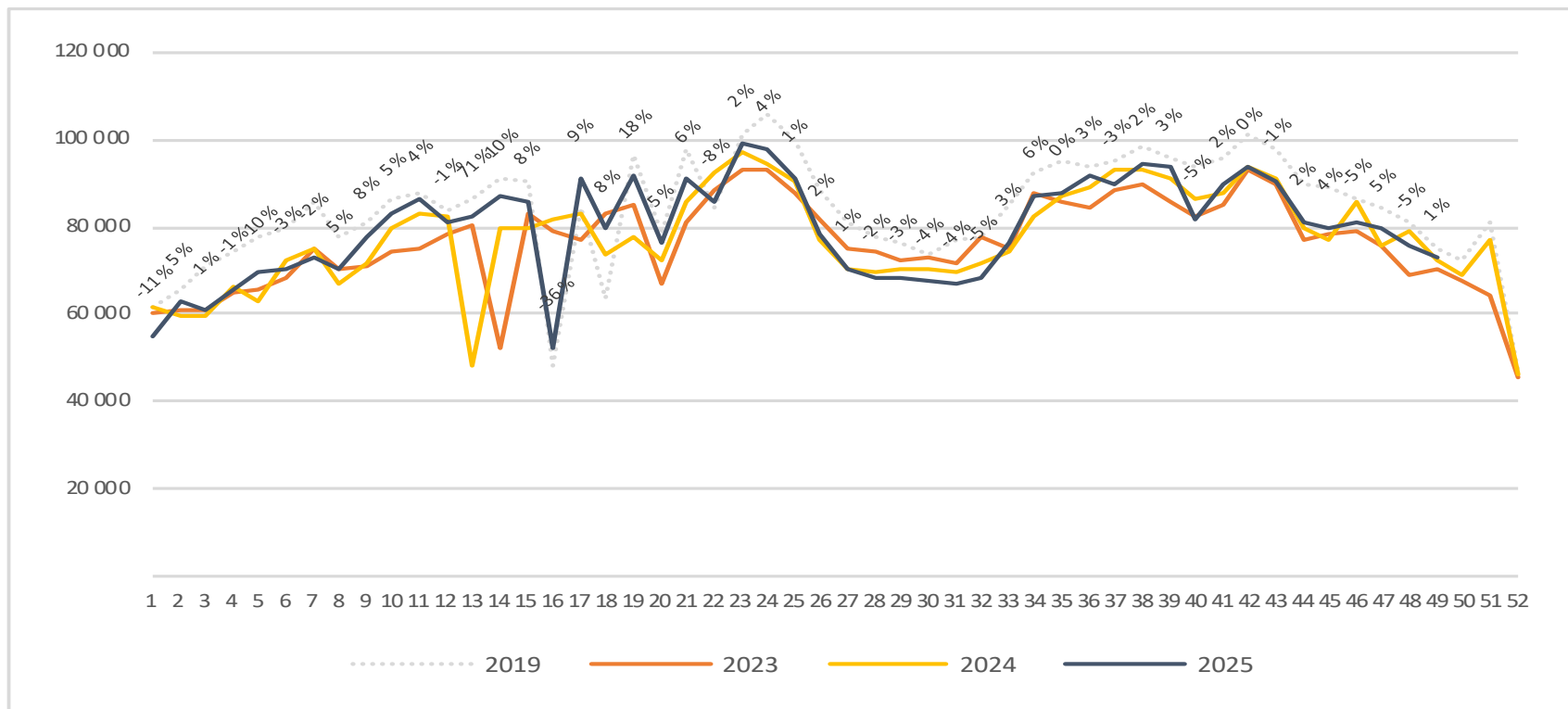
Passengers TRD total per day week 49



2019	11 940	10 589	10 981	12 640	12 531	4 841	11 309
2023	10 164	9 261	10 519	11 849	12 064	5 608	10 813
2024	11 309	8 579	10 485	11 544	13 098	5 245	12 001
2025	11 325	8 734	10 653	12 109	12 653	5 769	11 753

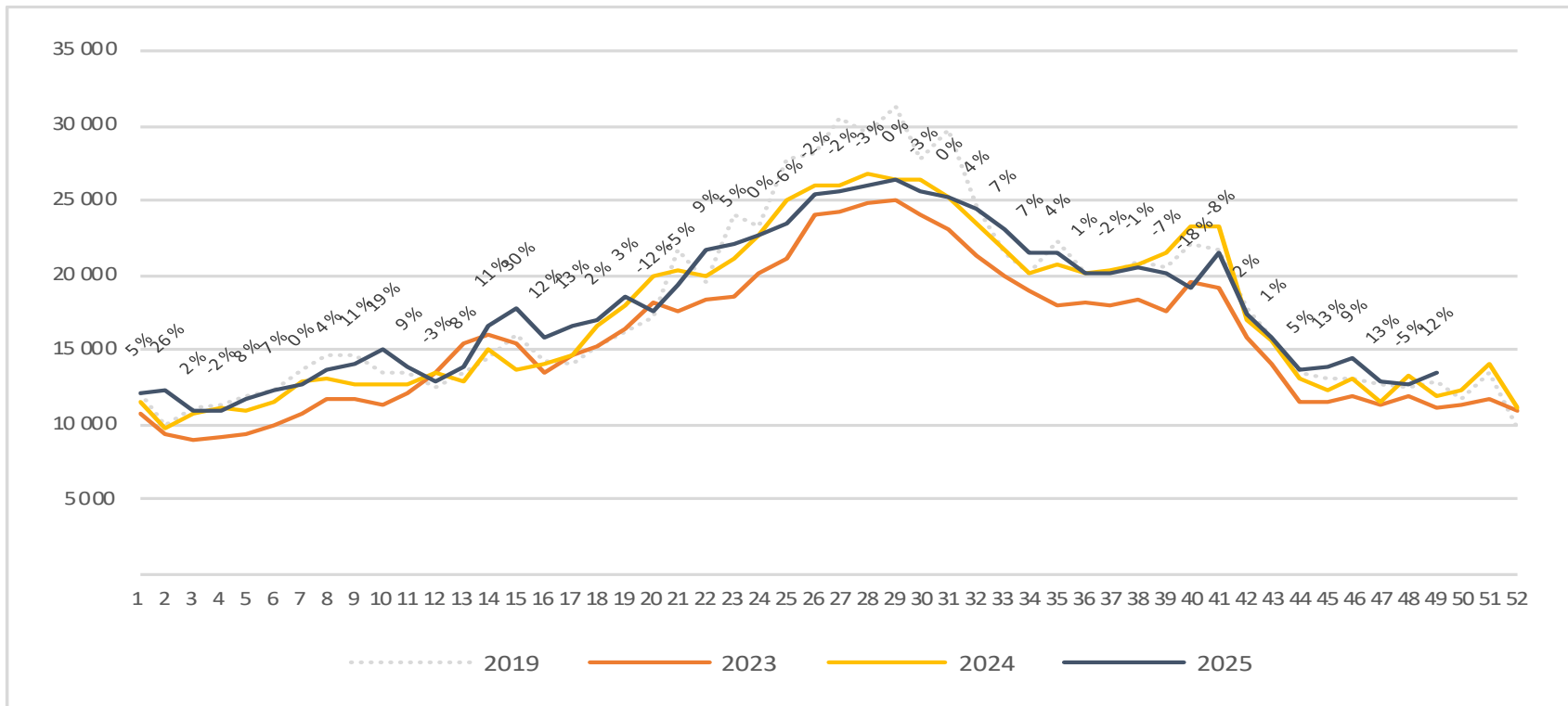
Passengers TRD total per week

The change is measured against the same week last year



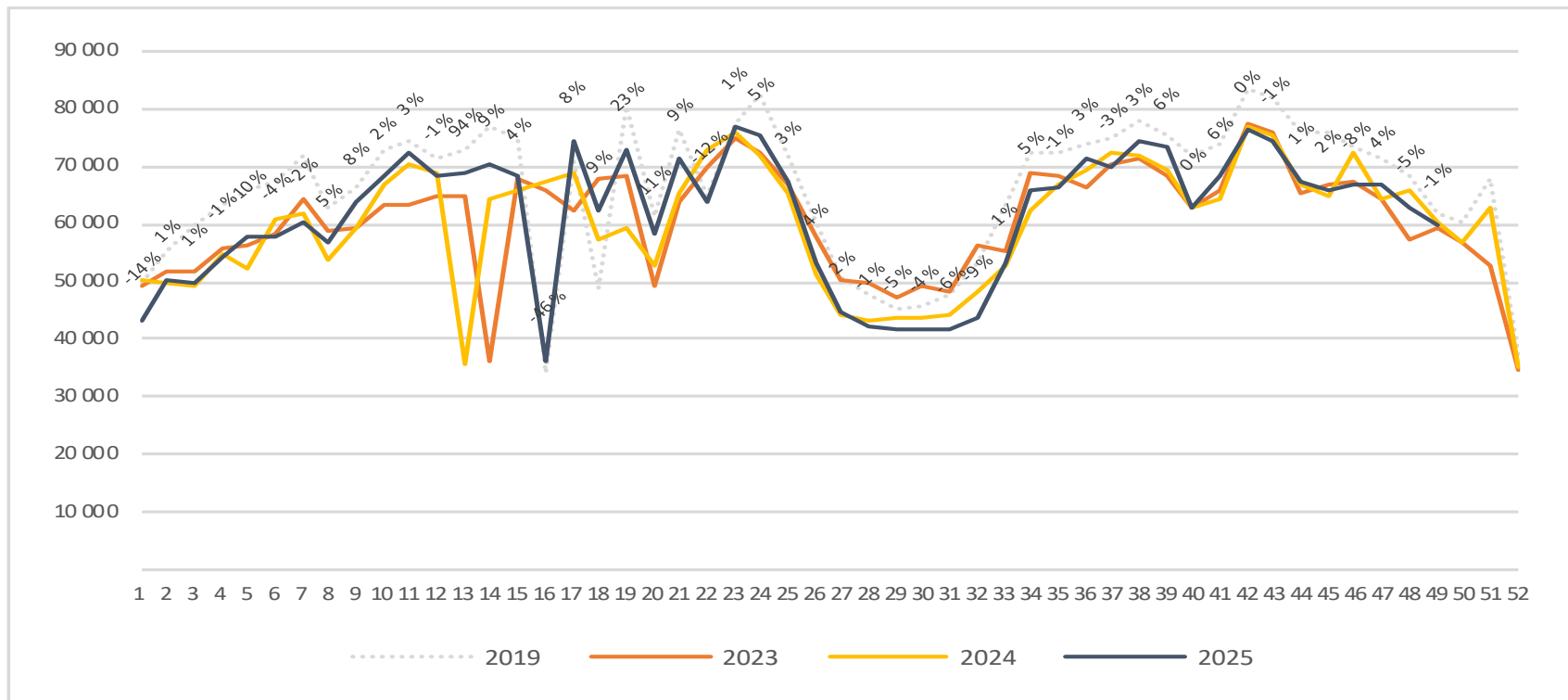
Passengers TRD international per week

The change is measured against the same week last year

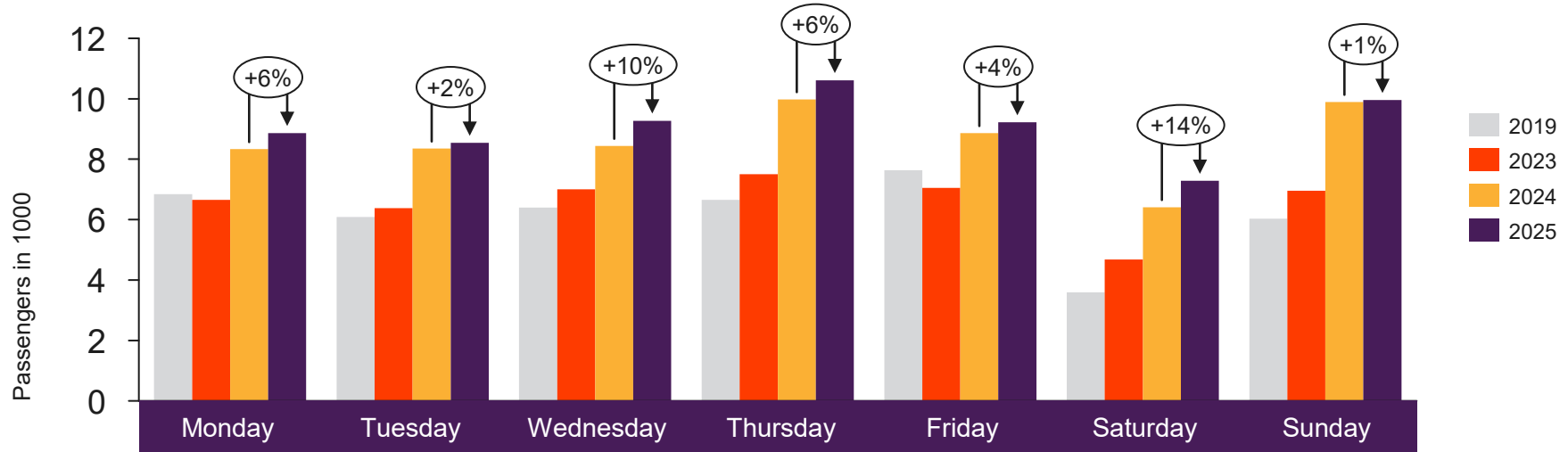


Passengers TRD domestic per week

The change is measured against the same week last year



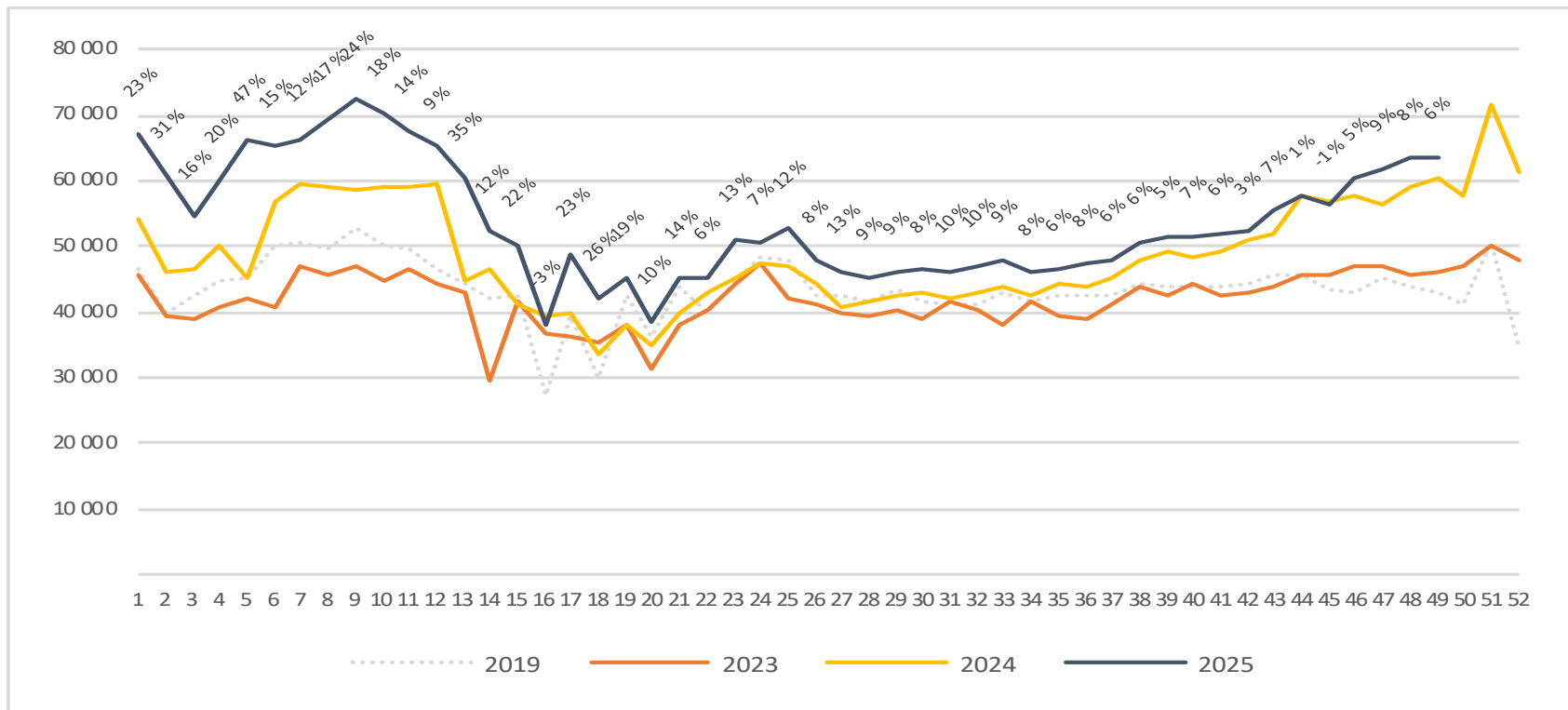
Passengers TOS total per day week 49



	Monday	Tuesday	Wednesday	Thursday	Friday	Saturday	Sunday
2019	6 841	6 088	6 396	6 652	7 632	3 589	6 032
2023	6 649	6 376	7 003	7 500	7 051	4 684	6 959
2024	8 334	8 354	8 441	9 981	8 861	6 412	9 891
2025	8 859	8 538	9 273	10 612	9 221	7 282	9 959

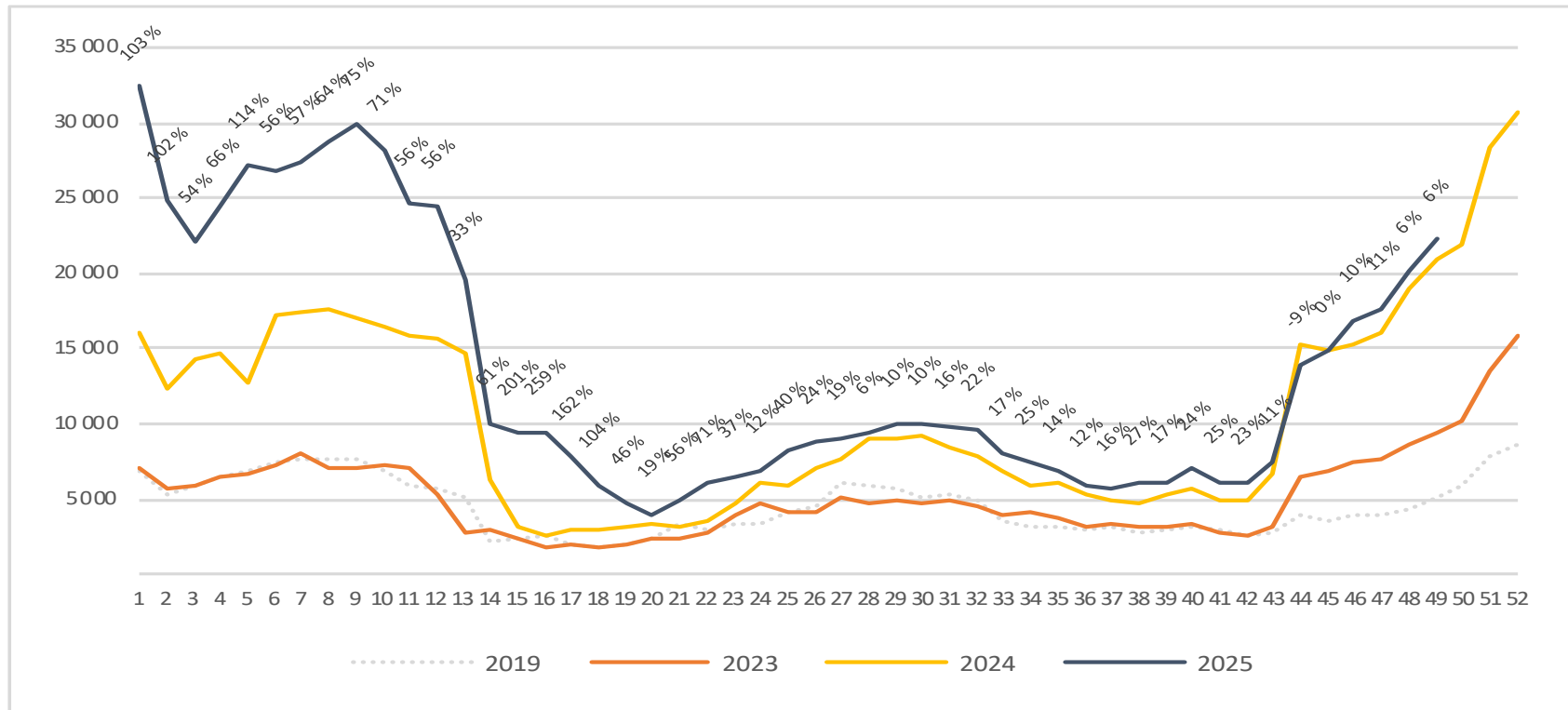
Passengers TOS total per week

The change is measured against the same week last year



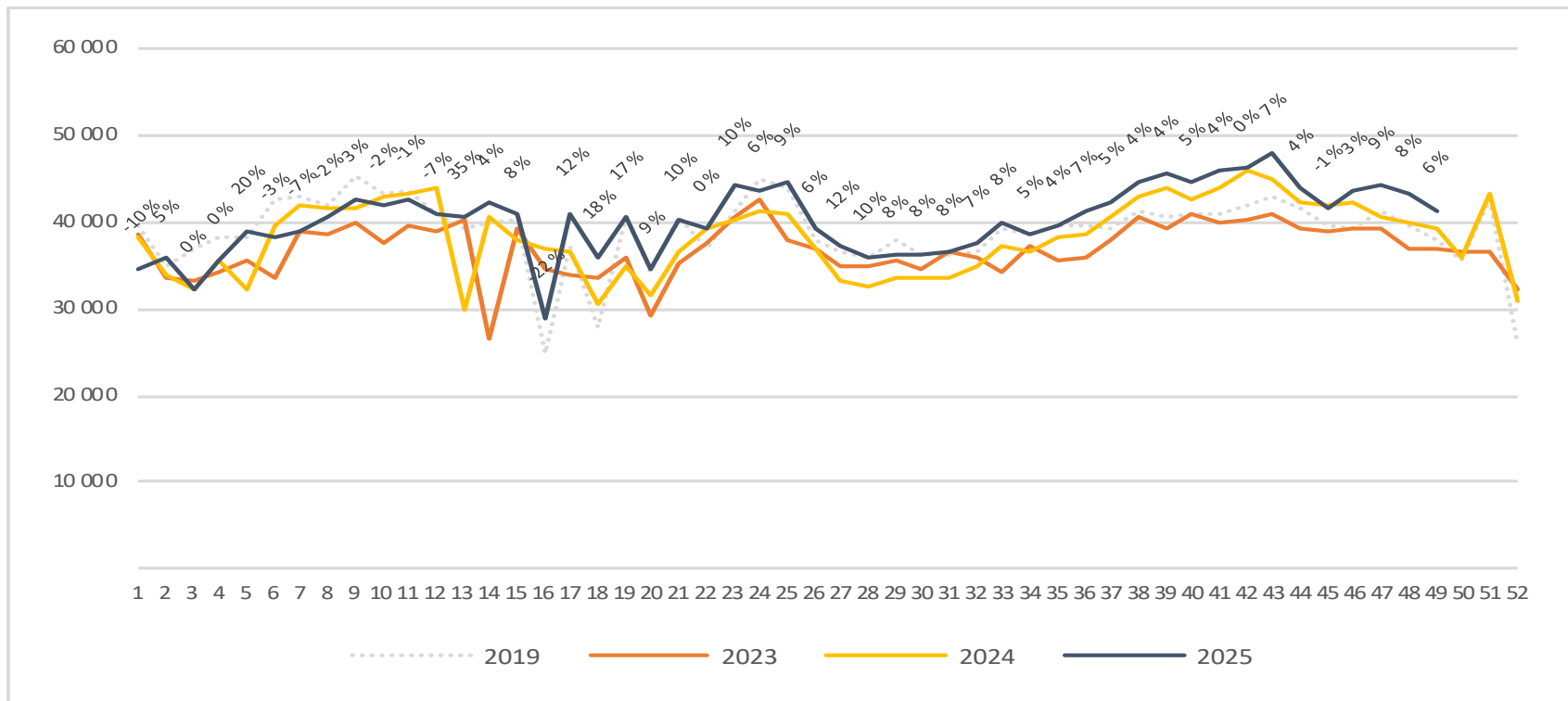
Passengers TOS international per week

The change is measured against the same week last year



Passengers TOS domestic per week

The change is measured against the same week last year



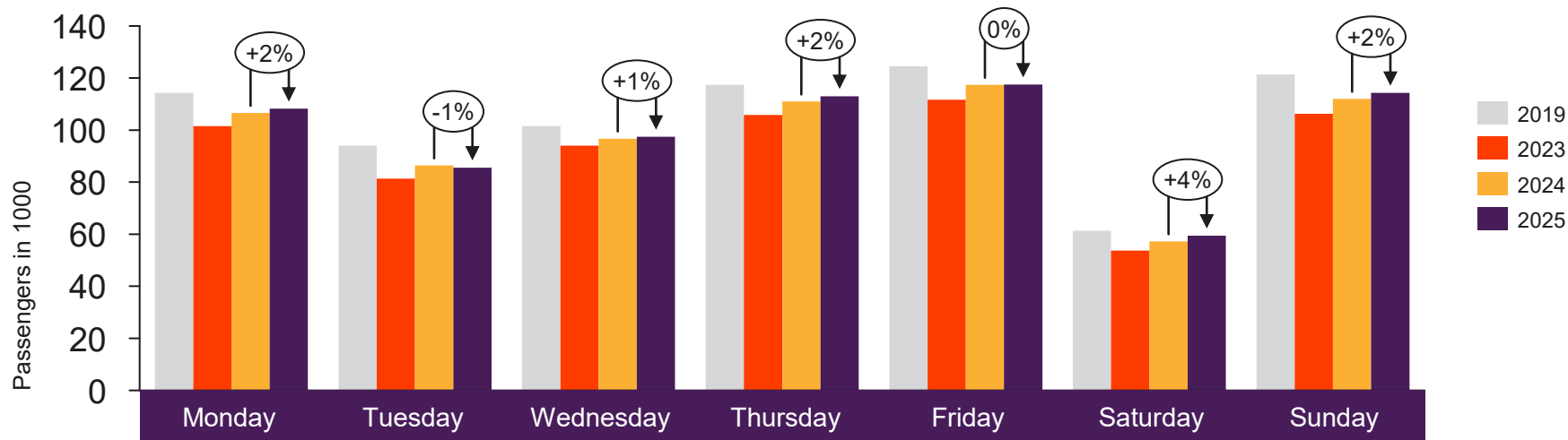


[Return to content page](#)

Top 4 airports

Total passenger numbers from Oslo, Bergen, Stavanger and Trondheim

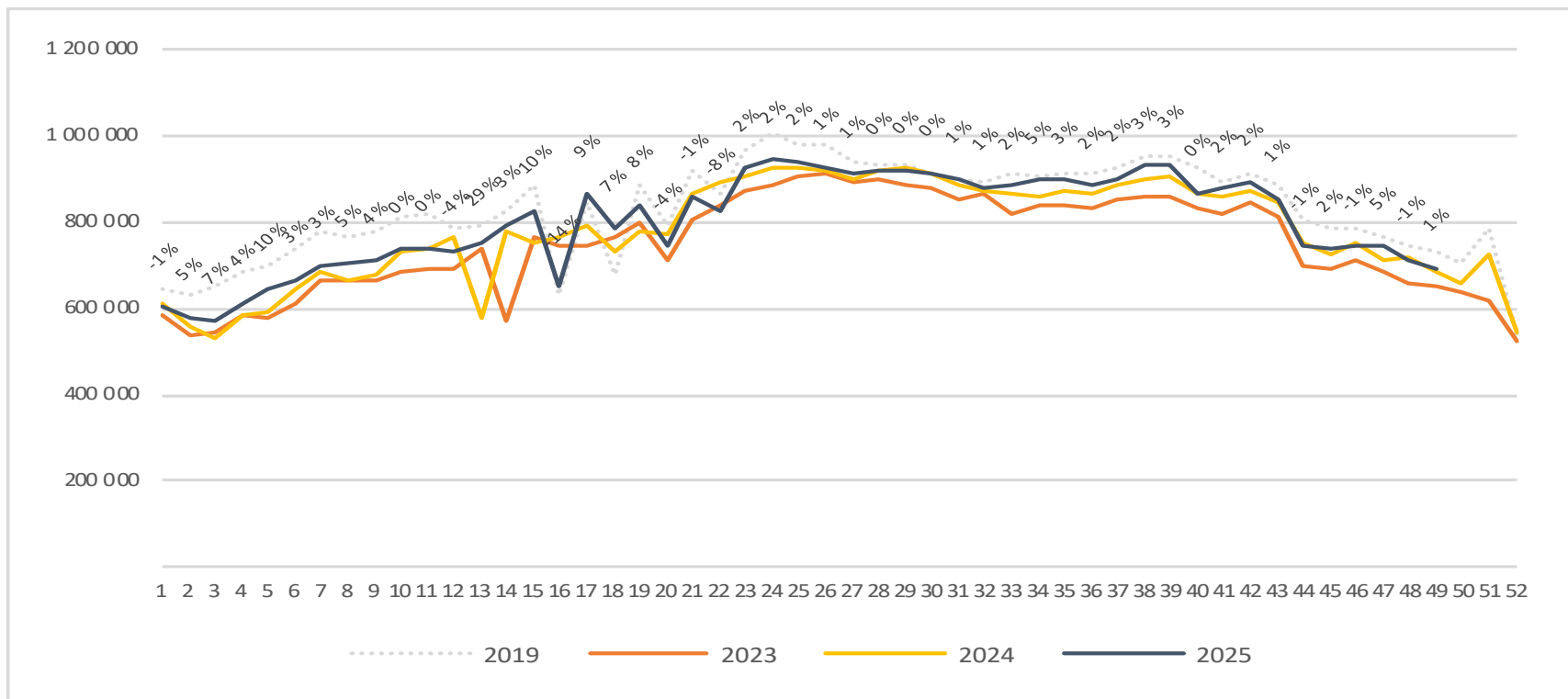
Passengers top 4 airports total per day week 49



2019	114 304	94 010	101 553	117 424	124 542	61 307	121 358
2023	101 471	81 349	94 015	105 864	111 690	53 757	106 303
2024	106 599	86 459	96 713	111 018	117 409	57 242	112 016
2025	108 233	85 590	97 398	113 015	117 535	59 453	114 269

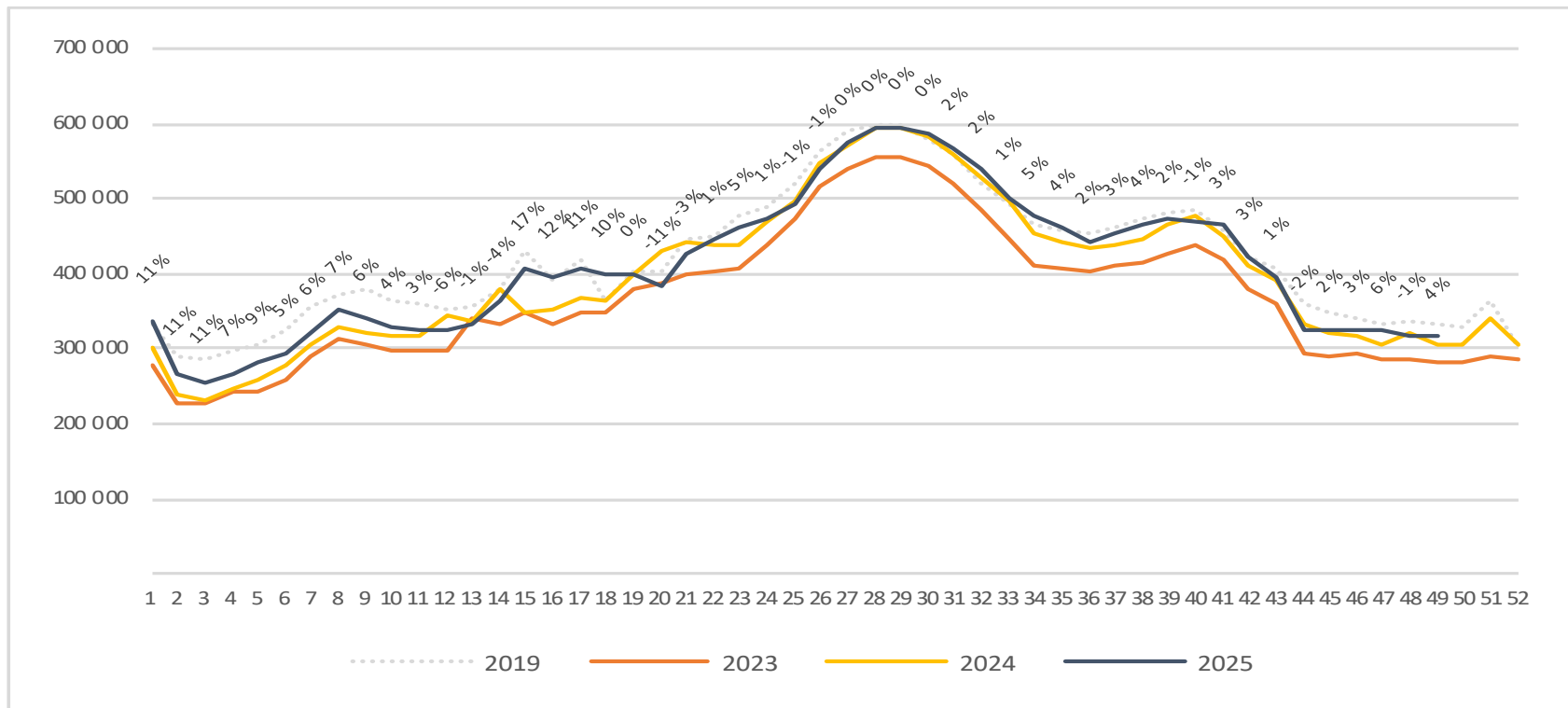
Passengers top 4 airports total per week

The change is measured against the same week last year



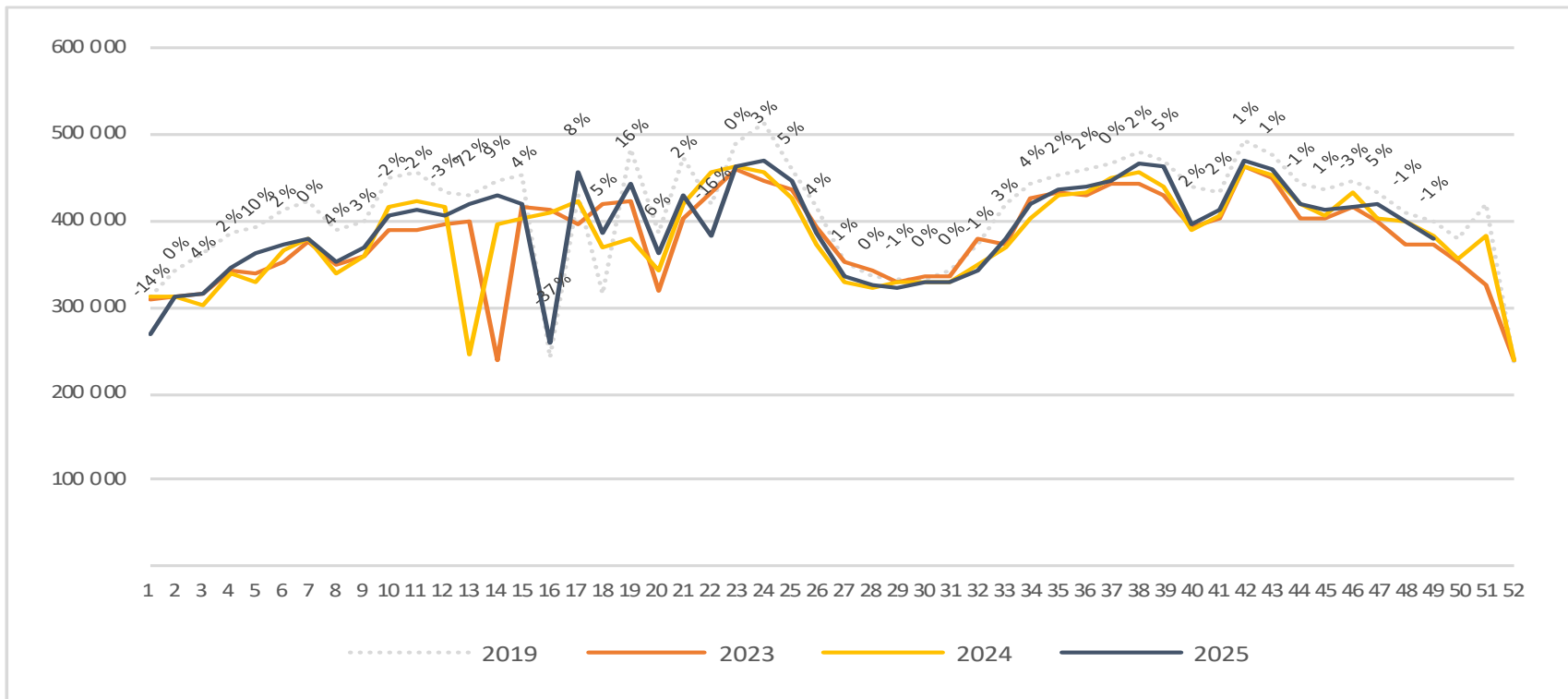
Passengers top 4 airports international per week

The change is measured against the same week last year



Passengers top 4 airports domestic per week

The change is measured against the same week last year



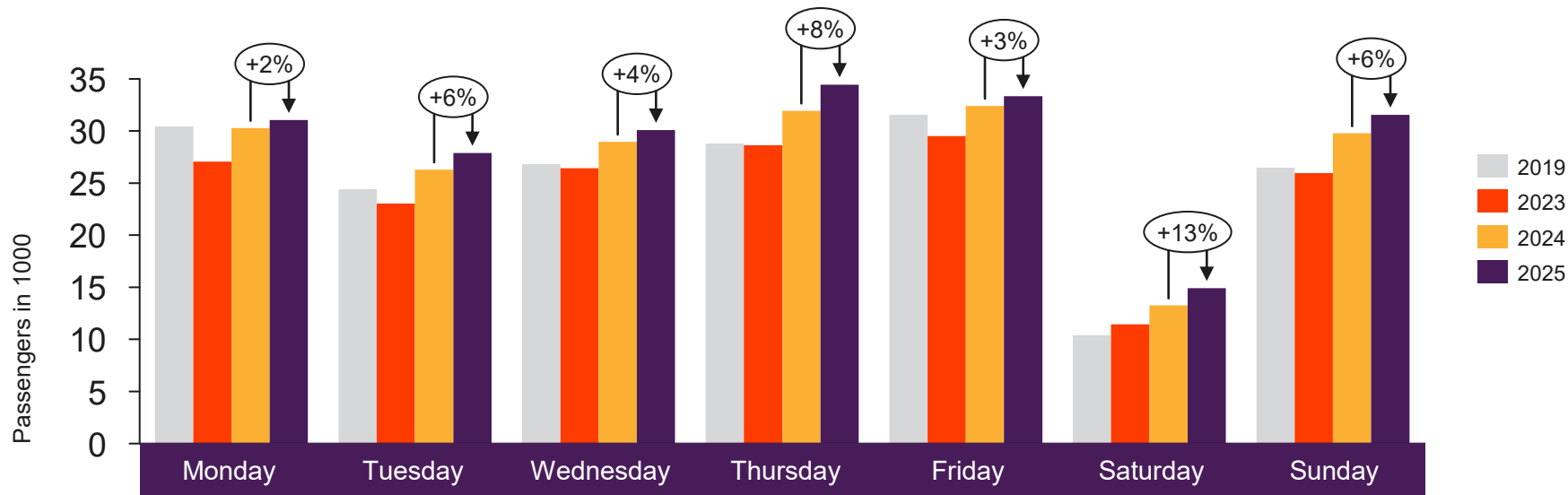


[Return to content page](#)

Regional and local airports

Total passenger numbers from Alta, Andenes, Bardufoss, Berlevåg, Bodø, Brønnøysund, Båtsfjord, Florø, Førde, Hammerfest, Harstad/Narvik, Hasvik, Honningsvåg, Kirkenes, Kristiansand, Kristiansund, Lakselv, Leknes, Mehamn, Mo i Rana, Molde, Mosjøen, Namsos, Røros, Rørvik, Røst, Sandane, Sandnessjøen, Sogndal, Stokmarknes, Svalbard, Svolvær, Sørkjosen, Tromsø, Vadsø, Vardø, Værøy, Ørsta-Volda and Ålesund

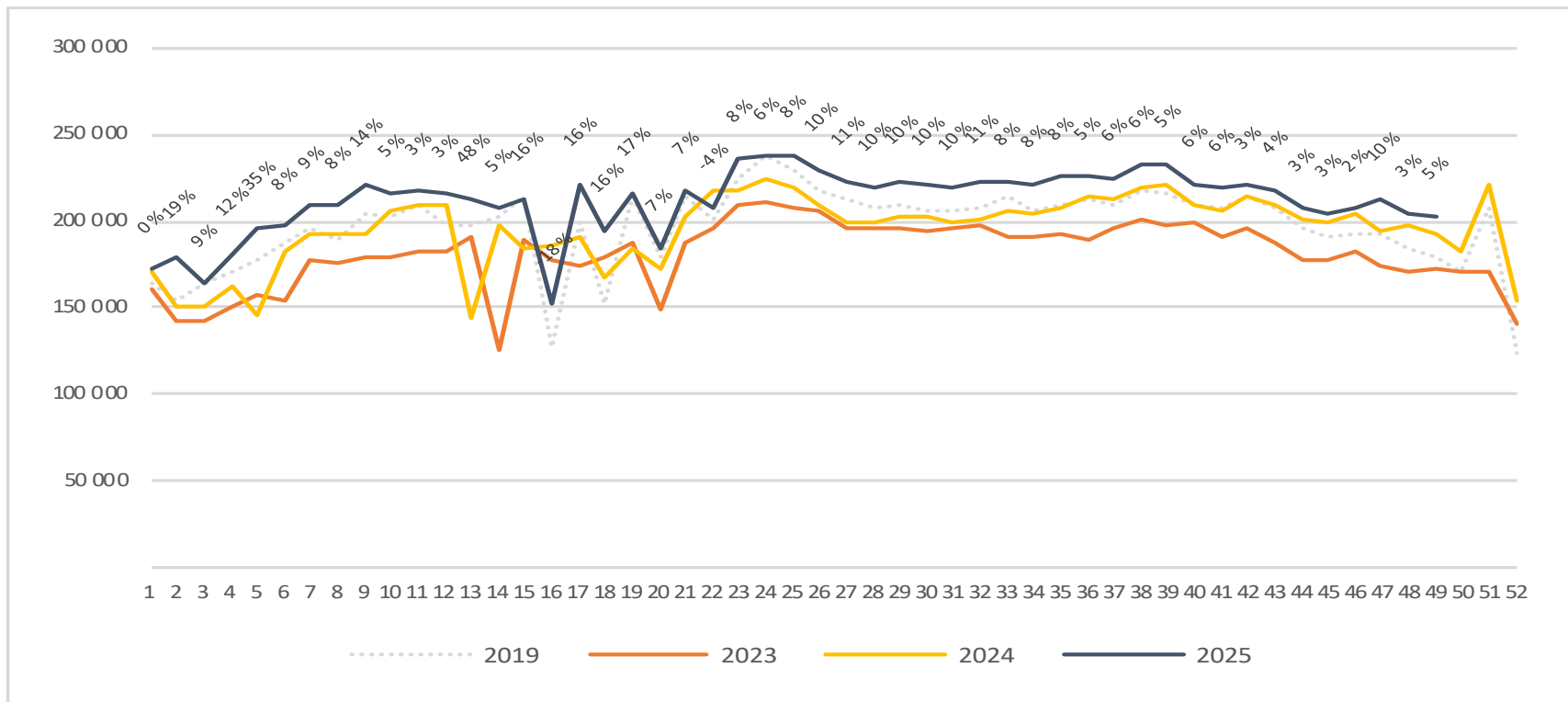
Passengers Regional and local airports total per day week 49



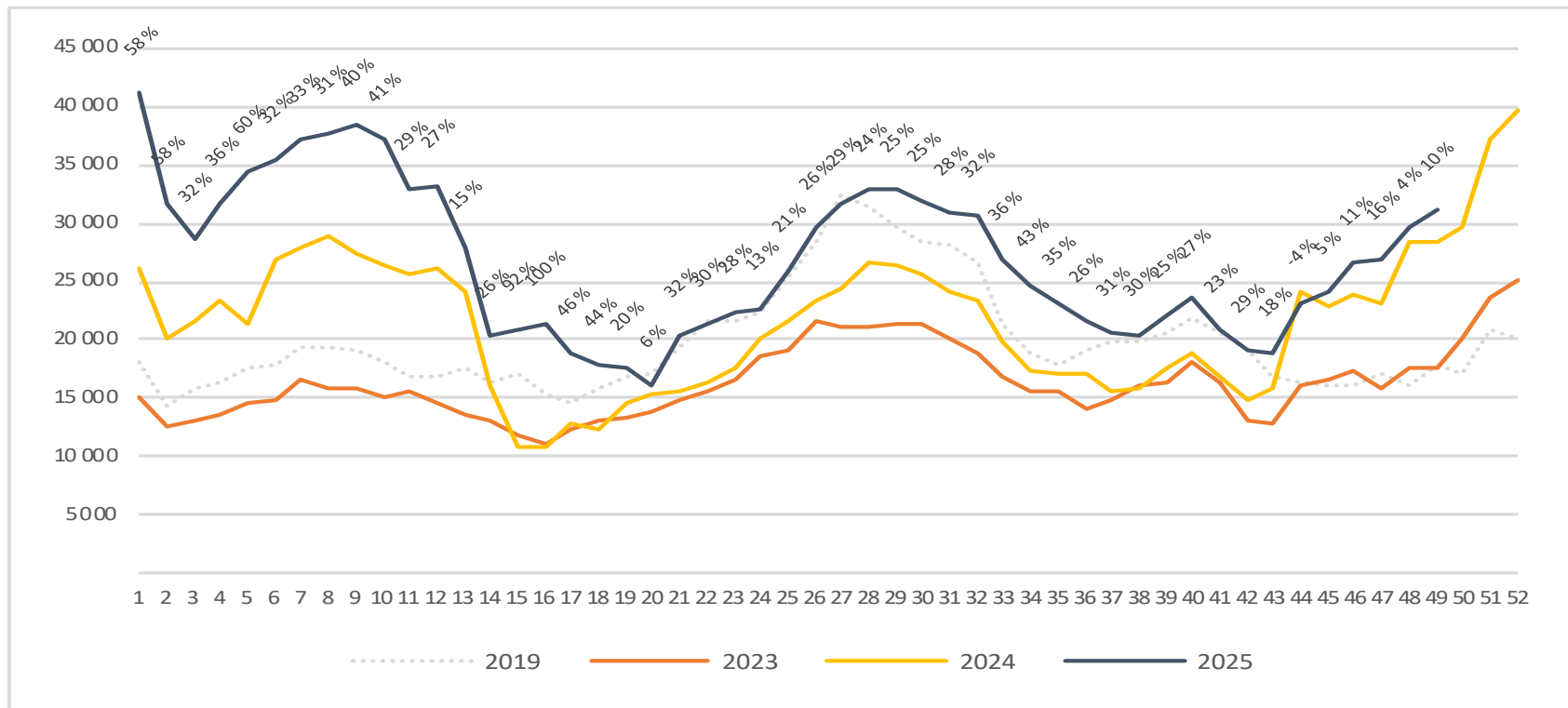
2019	30 443	24 421	26 827	28 802	31 552	10 393	26 491
2023	27 061	23 033	26 424	28 625	29 517	11 446	25 969
2024	30 297	26 299	28 962	31 949	32 406	13 256	29 782
2025	31 046	27 891	30 088	34 454	33 348	14 919	31 546

Passengers Regional and local airports total per week

The change is measured against the same week last year

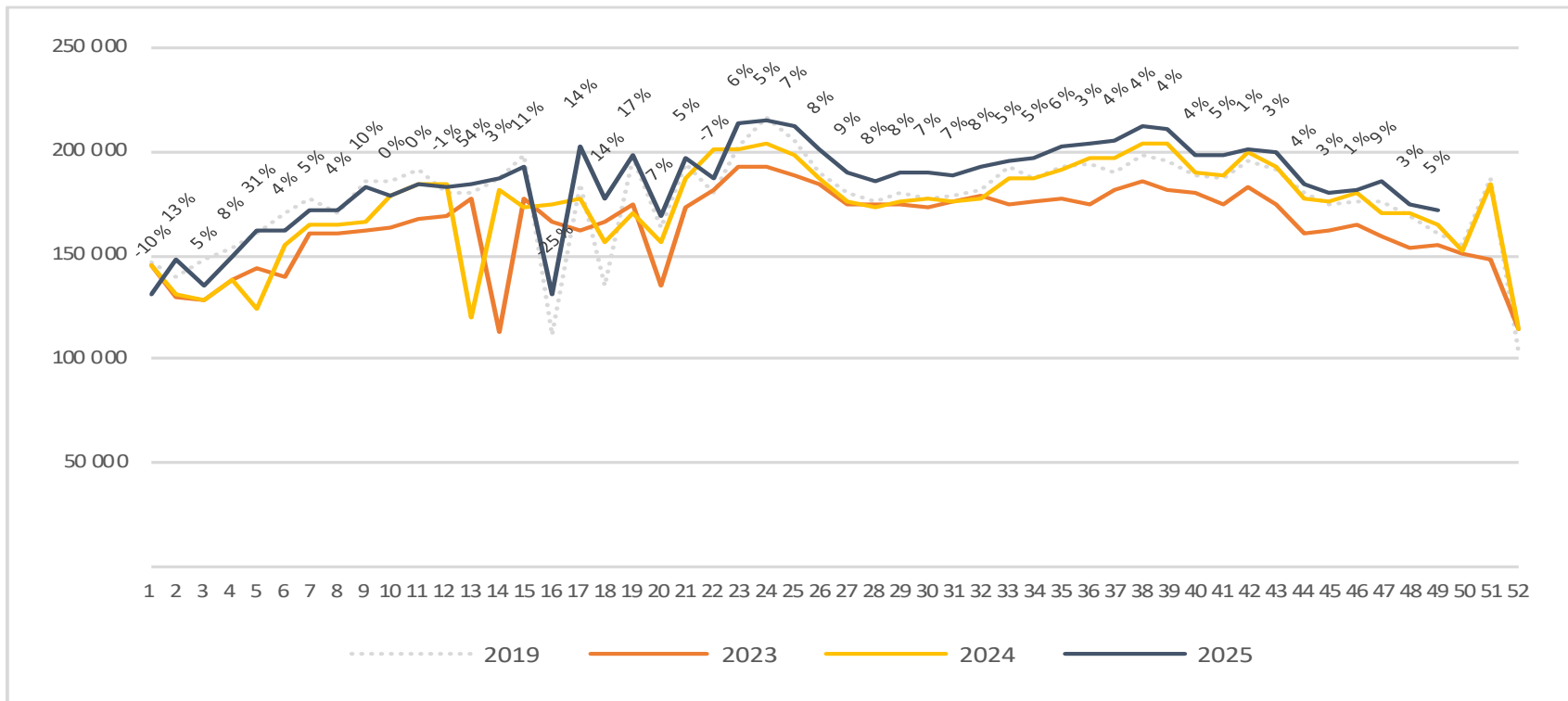


Passengers Regional and local airports international per week



Passengers Regional and local airports domestic per week

The change is measured against the same week last year



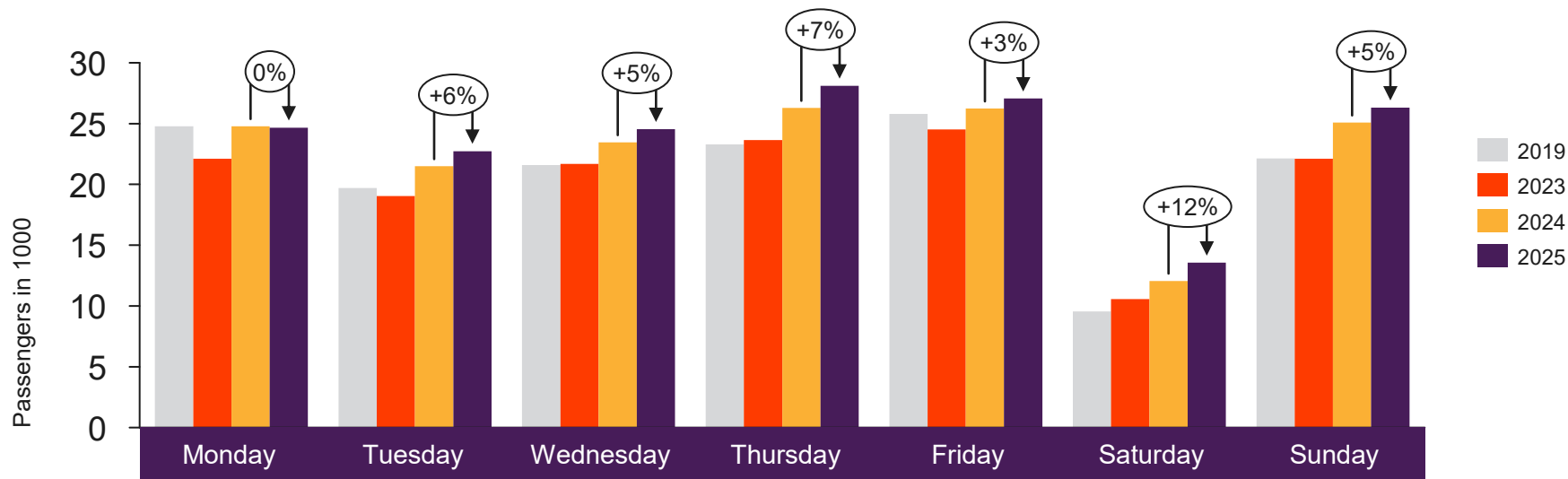


[Return to content
page](#)

Regional airports

Total passenger numbers from Alta, Bodø, Harstad/Narvik, Kirkenes, Kristiansand, Kristiansund, Molde, Svalbard, Tromsø and Ålesund

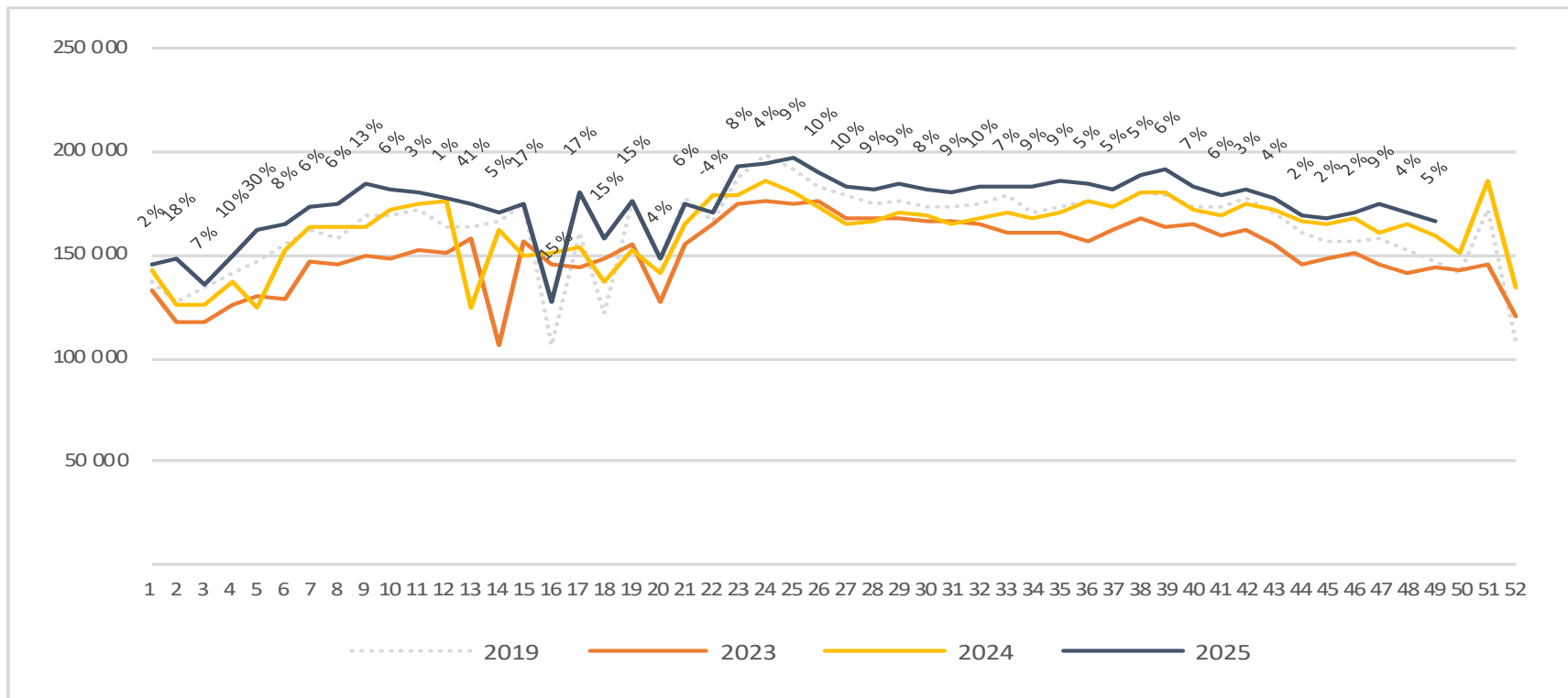
Passengers Regional airports total per day week 49



	Monday	Tuesday	Wednesday	Thursday	Friday	Saturday	Sunday
2019	24 766	19 713	21 592	23 288	25 785	9 553	22 128
2023	22 111	19 035	21 675	23 636	24 529	10 572	22 106
2024	24 786	21 492	23 455	26 279	26 239	12 063	25 082
2025	24 670	22 734	24 544	28 110	27 056	13 557	26 319

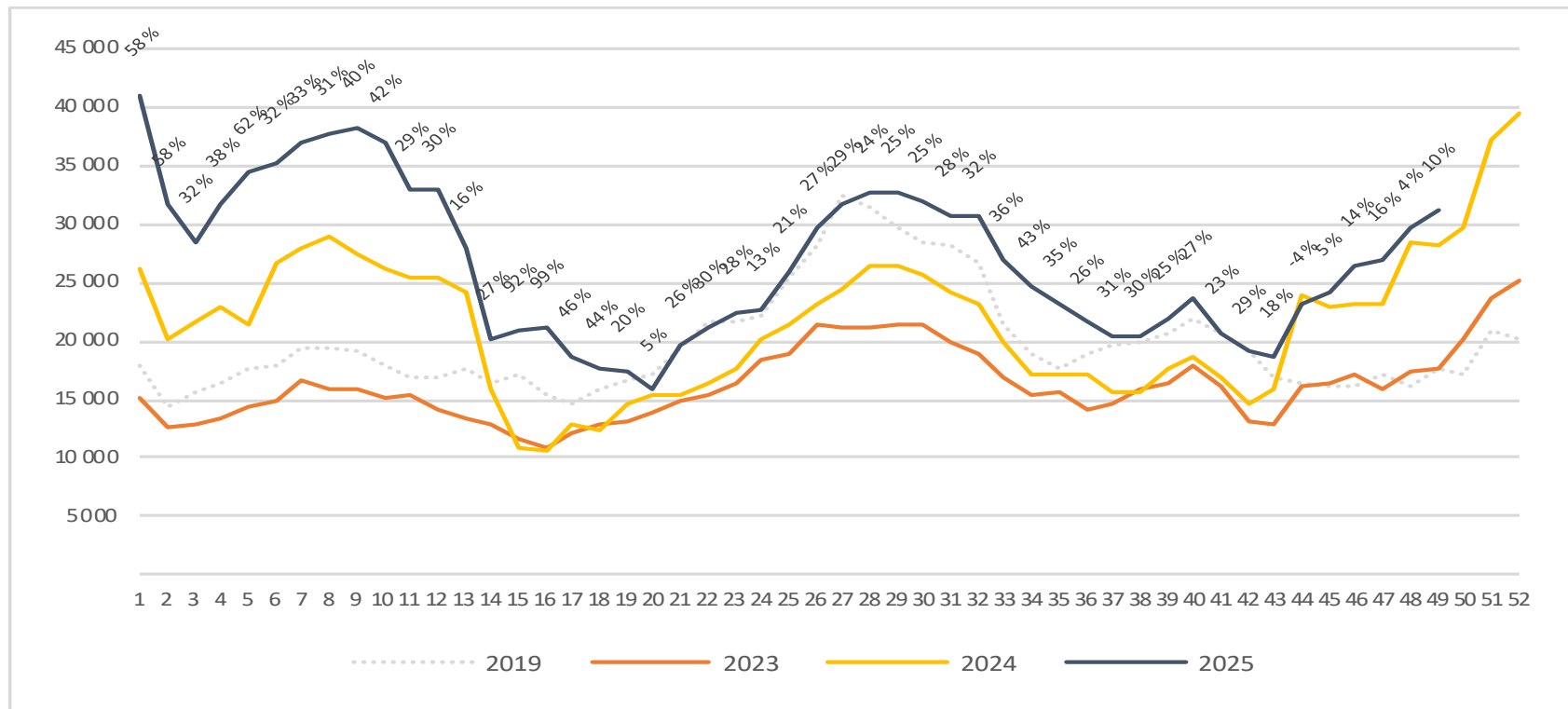
Passengers Regional airports total per week

The change is measured against the same week last year



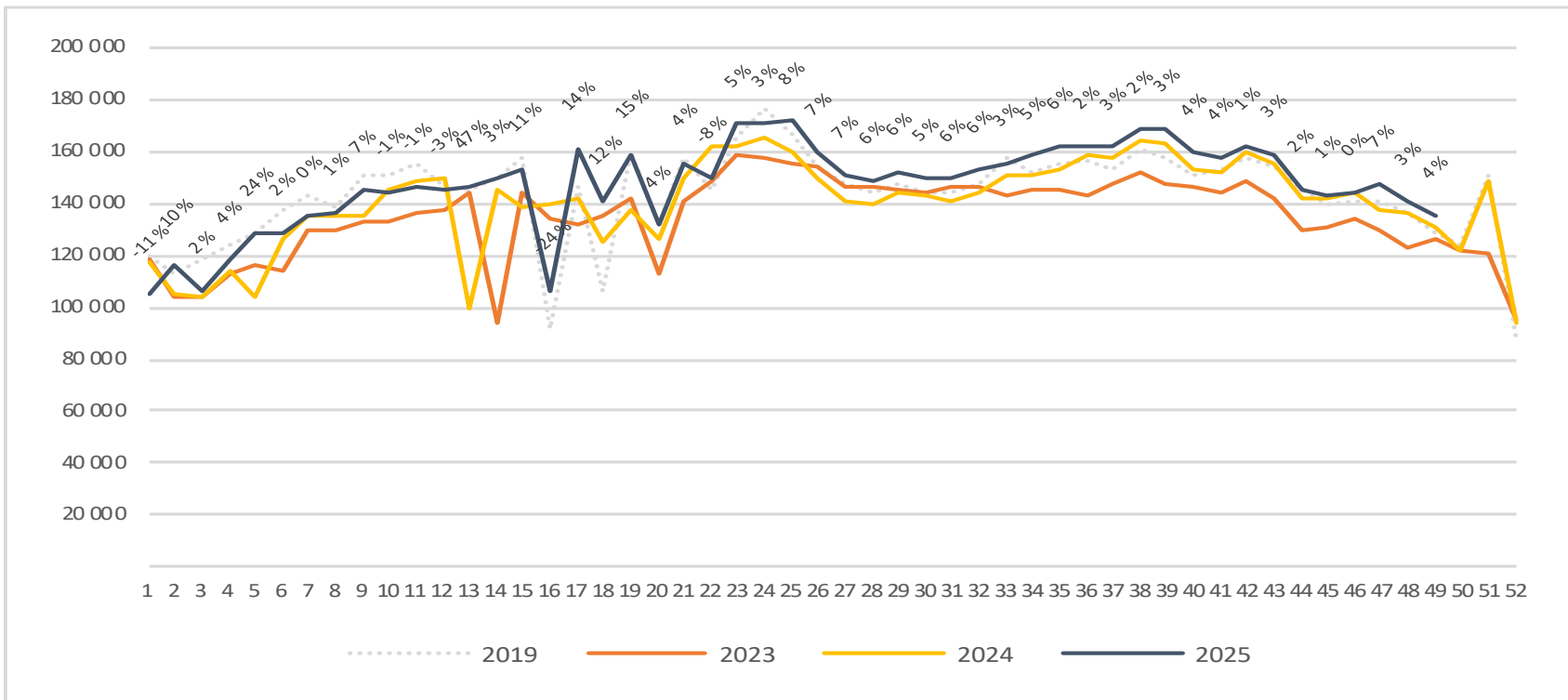
Passengers Regional airports international per week

The change is measured against the same week last year



Passengers Regional airports domestic per week

The change is measured against the same week last year



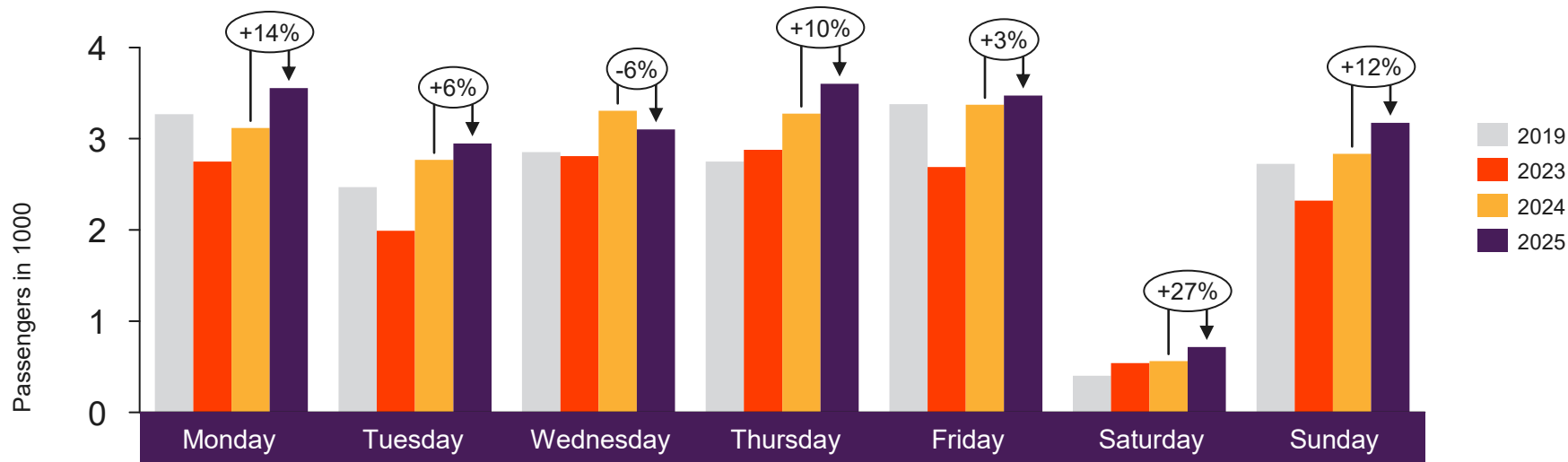


[Return to content
page](#)

Local Airports in Trøndelag and Nordland (Local Mid airports)

Total passenger numbers from Andenes, Bardufoss, Brønnøysund, Leknes, Mo i Rana, Mosjøen, Namsos, Rørvik, Røst, Sandnessjøen, Stokmarknes, Svolvær and Værøy

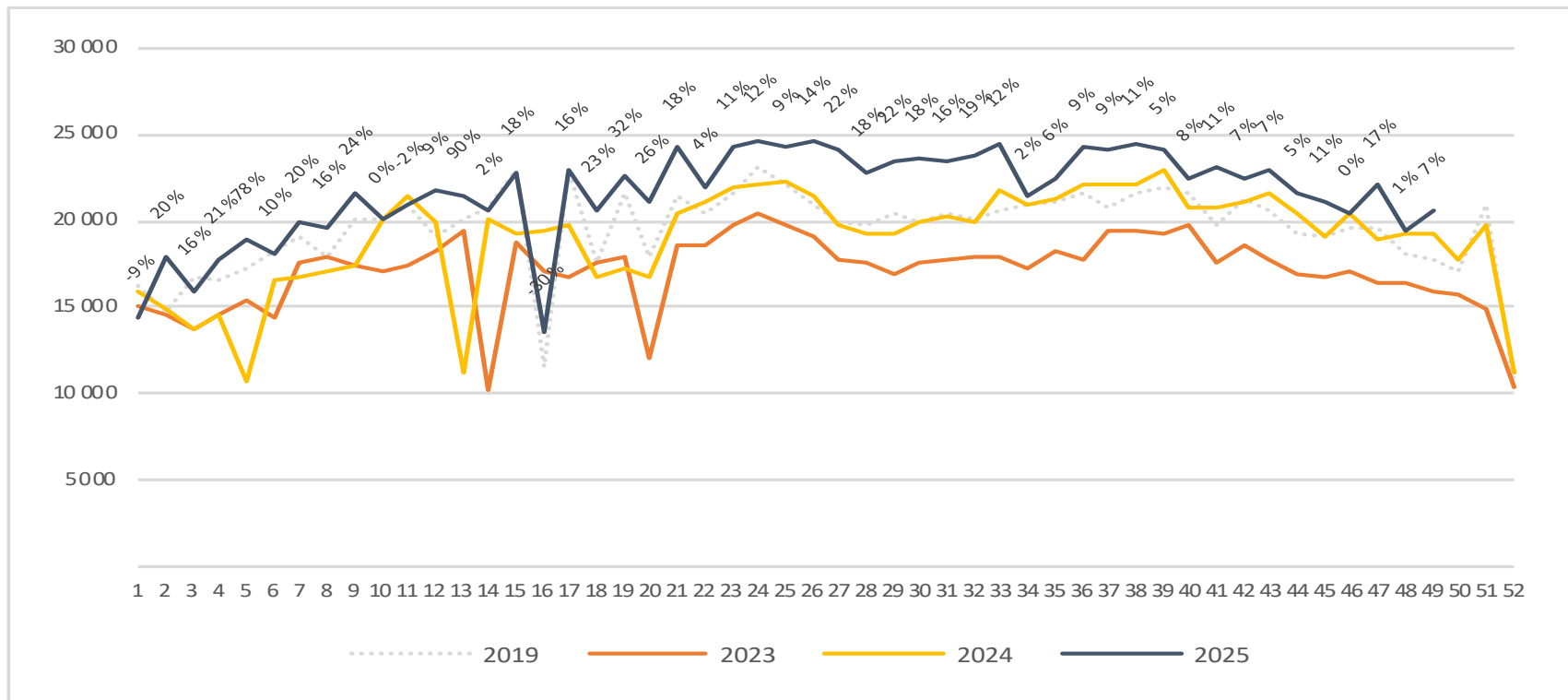
Passengers Local Mid airports total per day week 49



2019	3 268	2 470	2 855	2 749	3 378	401	2 724
2023	2 750	1 991	2 811	2 879	2 690	541	2 323
2024	3 119	2 768	3 307	3 275	3 372	562	2 835
2025	3 554	2 947	3 102	3 602	3 473	716	3 175

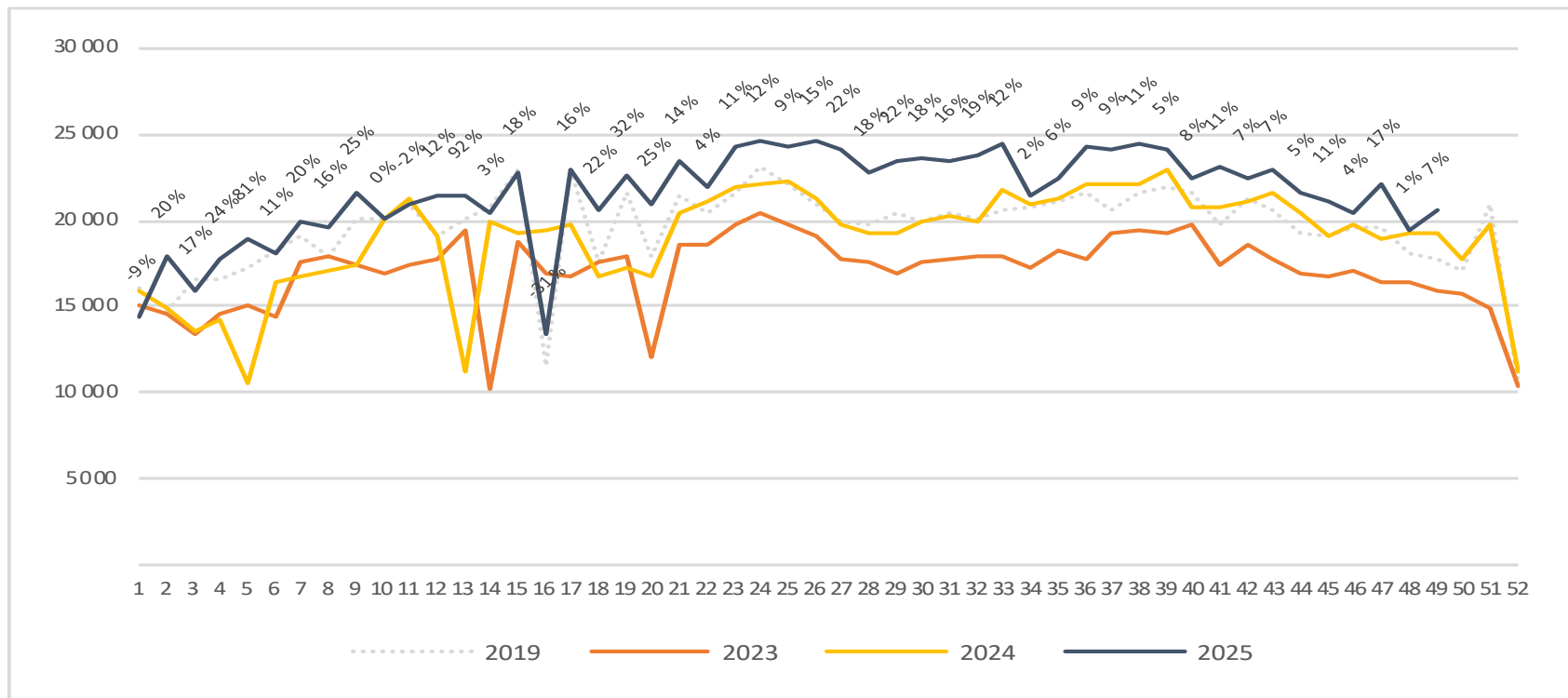
Passengers Local Mid airports total per week

The change is measured against the same week last year



Passengers Local Mid airports domestic per week

The change is measured against the same week last year



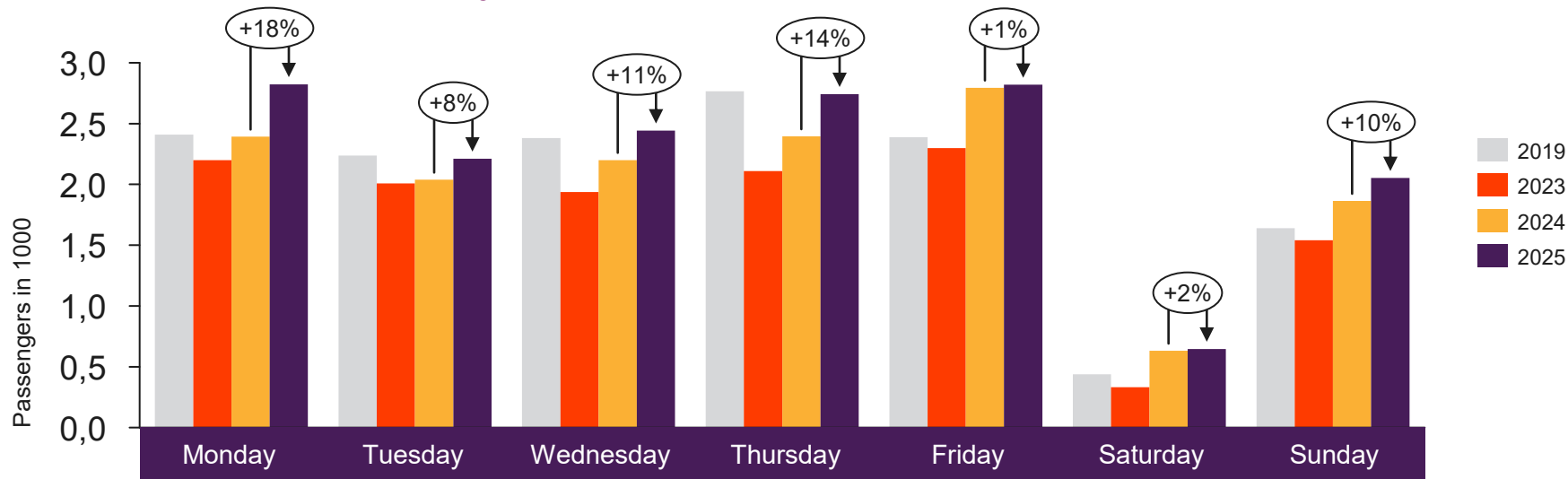


[Return to content
page](#)

Local airports on the West coast and in Troms and Finnmark

Total passenger numbers from Berlevåg, Båtsfjord, Florø, Førde, Hammerfest, Hasvik, Honningsvåg, Lakselv, Mehamn, Røros, Sandane, Sogndal, Sørkjosen, Vadsø, Vardø and Ørsta-Volda

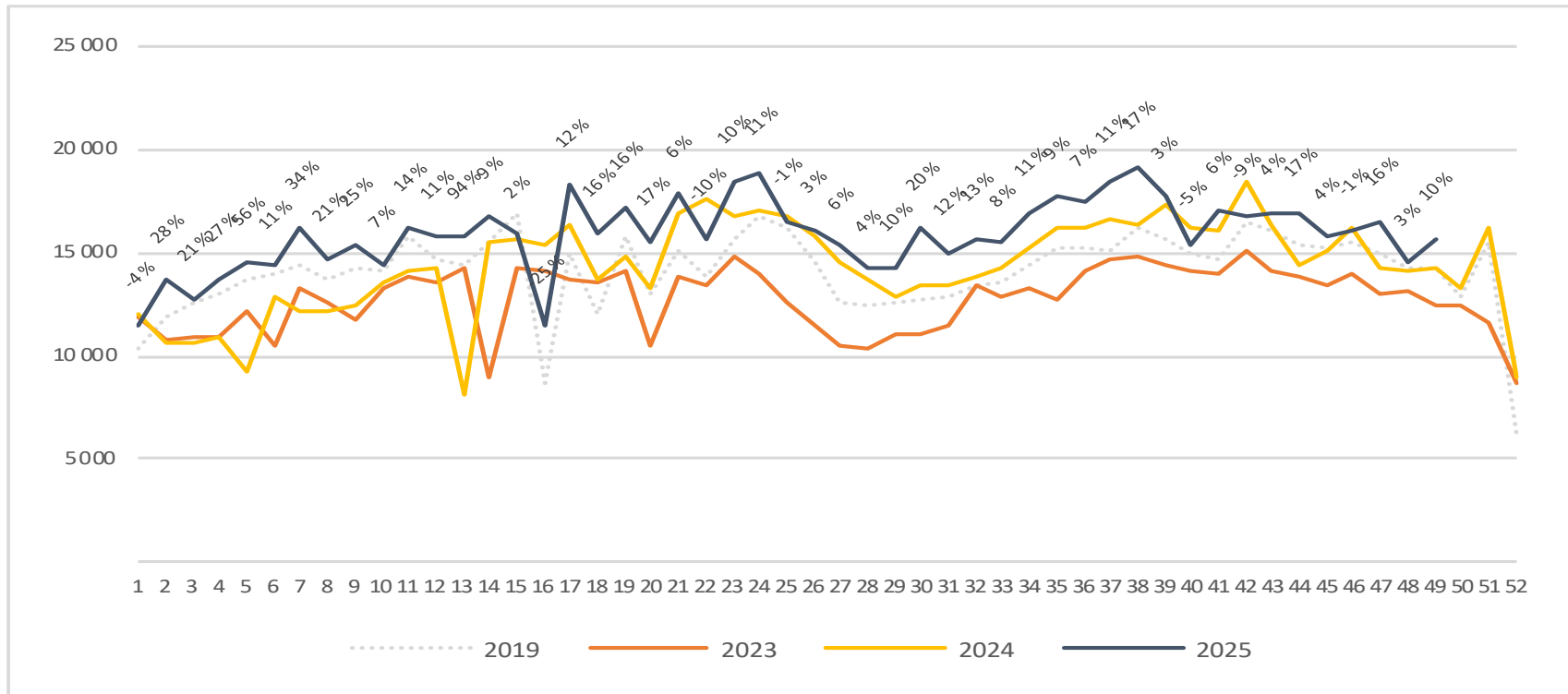
Passengers local airports on the West coast and in Troms and Finnmark total per day week 49



	Monday	Tuesday	Wednesday	Thursday	Friday	Saturday	Sunday
2019	2 409	2 238	2 380	2 765	2 389	439	1 639
2023	2 200	2 007	1 938	2 110	2 298	333	1 540
2024	2 392	2 039	2 200	2 395	2 795	631	1 865
2025	2 822	2 210	2 442	2 742	2 819	646	2 052

Passengers local airports on the West coast and in Troms and Finnmark total per week

The change is measured against the same week last year



Passengers local airports on the West coast and in Troms and Finnmark domestic per week

The change is measured against the same week last year

