

OLIVE DOWNS COMPLEX



PEMBROKE

2Q-2025 RESULTS & PRESENTATION

Barry Tudor, Chairman & CEO
Yoko Kosugi, CFO

03 September 2025

Strictly private and confidential

Important Notice and Disclaimer

THIS DOCUMENT IS NOT FOR RELEASE, PUBLICATION OR DISTRIBUTION, IN WHOLE OR IN PART, DIRECTLY OR INDIRECTLY, IN OR INTO OR FROM THE UNITED STATES OF AMERICA, ITS TERRITORIES OR POSSESSIONS, JAPAN, AUSTRALIA, CANADA, HONG KONG OR SOUTH AFRICA OR TO ANY RESIDENT THEREOF, OR ANY JURISDICTION WHERE SUCH DISTRIBUTION IS UNLAWFUL. THIS DOCUMENT IS NOT AN OFFER OR AN INVITATION TO SUBSCRIBE FOR, BUY OR SELL SECURITIES. AND NEITHER THIS PRESENTATION NOR ANYTHING CONTAINED HEREIN SHALL FORM THE BASIS OF ANY CONTRACT OR COMMITMENT WHATSOEVER.

This presentation (this "**Presentation**") has been produced by Pembroke Olive Downs Pty Ltd (the "Issuer"), solely for information purposes for use in presentations to the holders of the Issuer's senior secured bonds 2025/2030 with ISIN NO0013464792 (the "Bonds") issued on 18 February 2025.

This Presentation and its contents are strictly confidential. They shall not (in whole or in part) be reproduced, distributed or passed on, directly or indirectly, to any other person (excluding investment professionals' advisers) without the prior written consent of the Issuer. Only the Issuer is entitled to provide information in respect of matters described in this Presentation. Information obtained from other sources is not relevant to the content of this Presentation and should not be relied upon.

This Presentation is for information purposes only. We recommend that the recipient seek independent third-party legal, regulatory, accounting, tax or other professional advice regarding the contents of this presentation. This presentation does not constitute and should not be relied on or considered as and is not held out to be any form of financial, accounting, regulatory or tax advice or opinion, advice or recommendation to any person to undertake any transaction and does not purport to contain all information that may be required to evaluate the matters set out herein and does not take into account the investment objectives, financial situation or needs of any particular person.

This Presentation contains certain forward-looking statements relating to the business, financial performance and results of the Issuer and its parent and subsidiaries of the parent (together, the "Group") and/or the industry in which they operate. Forward-looking statements concern future circumstances and results and other statements that are not historical facts, sometimes identified by the words "believes", "expects", "predicts", "intends", "projects", "plans", "estimates", "anticipates", "targets", and similar expressions. The forward-looking statements contained in this Presentation, including assumptions, opinions and views of the Group or cited from third-party sources, are solely opinions and forecasts which are subject to risks, uncertainties and other factors that may cause actual events to differ materially from any anticipated development. None of the Issuer or any other member of the Group, or any of their affiliates or any such person's directors, officers, employees, advisors or representatives (collectively, the "Representatives") provides any assurance that the assumptions underlying such forward-looking statements are free from

errors, nor does any of them accept any responsibility for the future accuracy of the opinions expressed in this Presentation or the actual occurrence of the forecasted developments. Forward-looking statements are not guarantees of future performance. The actual results may differ materially from those forecast. None of the Issuer nor the Representatives assume any obligation, except as required by law, to update any forward-looking statements or to conform these forward-looking statements to the Group's actual results.

An investment in the Bonds involves a high level of risk, and several factors could cause the actual results or performance of the Issuer to be different from what may be expressed or implied by statements contained in this Presentation. Past performance is not indicative of future results.

Each recipient acknowledges that it will be solely responsible for its own assessment of the market and the market position of the Issuer, and that it will conduct its own analysis and be solely responsible for forming its own view of the potential future performance of the Issuer and the Group's respective businesses.

Recipients of this presentation should inform themselves about and observe any applicable legal requirements in their jurisdictions. In particular, the distribution of this presentation may, in certain jurisdictions, be restricted by law. Accordingly, recipients represent that they are able to receive this presentation without contravention of any applicable legal or regulatory restrictions in the jurisdiction in which they reside or conduct business. Any investment or investment activity to which this presentation relates is subject to all applicable legal requirements.

Unless stated therein, the information contained in this Presentation has been obtained by the Issuer, other members of the Group and/or their Representatives. While the information herein is believed to be in all material respects correct, neither Issuer, any other member of the Group, nor any of their respective Representatives (the "Covered Persons"), makes any representation or warranty, expressed or implied, as to the fairness, accuracy or completeness of the information contained in this Presentation, or regarding any other additional information which has or will be made available to the recipients in connection with any investment in the Bonds. To the maximum extent permitted by law, no liability is accepted by the Covered Persons and the Group and its Representatives disclaim any and all liability for direct or indirect loss, liability, damage, cost, charge or expense suffered or incurred by any person, directly or indirectly, as a result of or in connection with the provision, use of, or reliance on the information provided in this presentation, or for any errors, omissions or misstatements contained in it.

This Presentation reflects the conditions and views as of the date set out on the front page of this Presentation. The information contained herein is subject to change, completion, or amendment without notice. In furnishing this Presentation, no Covered Person undertakes any obligation to provide the recipients with access to any additional information.

This Presentation will be governed by, and construed in accordance with, the laws of Australia. The courts of Australia will have exclusive jurisdiction to settle any dispute arising out of or in connection with this Presentation.

By receiving this Presentation, each recipient agrees to be bound by the terms and conditions set forth above and represents that it is a qualified institutional or other professional investor who is sufficiently experienced to understand the aspects and risks related to an investment in the Bonds, and who will obtain additional expert advice where and when needed.

This Presentation does not create any legally binding obligations on the Issuer or any member of the Group.



PEMBROKE

STEELMAKING COAL

Table of contents

- 1. Operational Performance
- 2. Health, Safety, Environment & Community
- 3. Financials update
- 4. Priorities

Appendices

- 1. 2Q 2025 Management Accounts
- 2. Olive Downs HCC Coal Quality & Market
- 3. Olive Downs Complex At A Glance
- 4. Reserves and Resources



1. Operational Performance



PEMBROKE

1H-2025⁽¹⁾

Key Highlights

Operations

Steady operations despite weather impact early in period

560Kt per month (average 6 month)	Covenanted ROM Production⁽²⁾
--	--

3.4Mt	ROM Production
--------------	-----------------------

2.0Mt	Product Sold
--------------	---------------------

>94%	CHPP Average Availability⁽³⁾
----------------	--

Financials

Uncertain pricing environment, focus on cost management.

USD251M	Revenue
----------------	----------------

USD128/t	Average of steelmaking & Industrial Coal Price
-----------------	---

~75%	Term Contracts
-------------	-----------------------

USD201m	Cash Balance as at 30 June 2025⁽⁴⁾
----------------	--



PEMBROKE

STEELMAKING COAL

- 1) 1H-2025 = 01 January 2025 to 30 June 2025
- 2) Satisfaction of clause 13.10(c) of the Bond terms
- 3) Average January 2025 to 30 June 2025

- 4) Cash balance includes collateralized cash that support bank guarantees of US\$20m.

© Pembroke Olive Downs Pty Ltd

Sales and Marketing Highlights

Olive Downs successfully executing its marketing strategy

Olive Downs Brands⁽¹⁾ are well established and in demand

HCC sales transitioned from 100% spot sales in 2024 to approximately 75% Term Contracts⁽²⁾

Consistent quality well received

Realised full value of the HCCAU00 index

Unallocated spot cargos being sold strategically for trials with the aim of diversifying our customer base

Industrial Coal – Vietnam remains the key market



STEELMAKING COAL

(1) Both steelmaking coal and industrial coal

(2) Base, buyers and mutual option tonnages contracted, vis a vis forecast HCC production tonnages

Steelmaking Coal



Marketing and Price

Receiving price relative equal to its peers within a Year

- In its first quarter, 2Q-2025, term contracted business, Olive Downs HCC achieved an average of 99.3% relative to the HCCAU00 index across its term contracts.
- Long term average relative between HCCAU00 and PLVHA00 index is 88%⁽¹⁾.
- HCCAU00 index dropped to USD132.3/t in June 2025
 - reflecting weakness in steel demand globally;
 - current ample supply of HCC;
 - oversupply of domestic Chinese coking coal;
- Steel industry is experiencing significant disruption, largely due to uncertainty over US tariffs, anti-dumping measures and global economic weakness.
- As momentum in green steel initiatives slow down and demand for cost efficient iron and steel to support development and infrastructure continues, the demand-supply dynamics for hard coking coal are expected to remain strong.



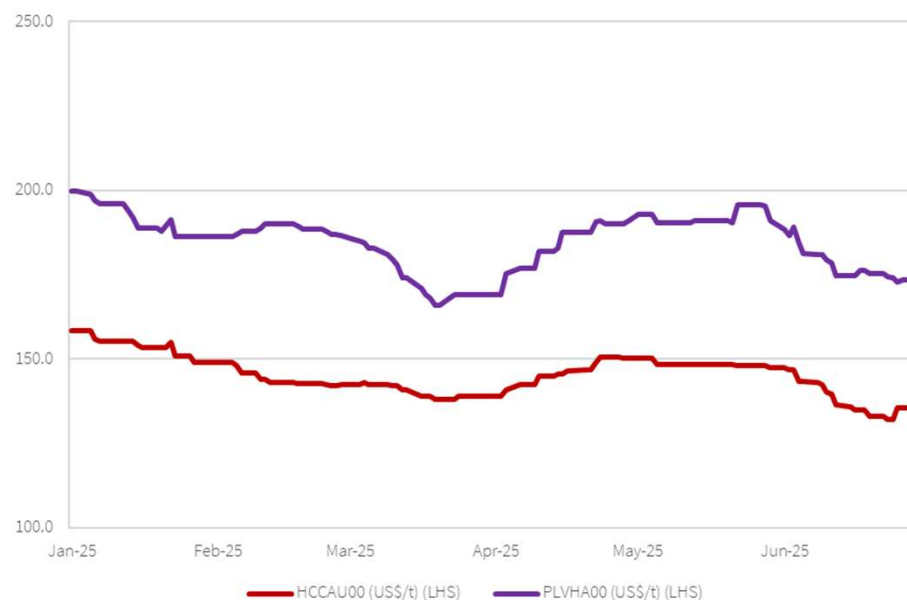
PEMBROKE

STEELMAKING COAL

(1) Period between 1 Jan 2011 and 31 Jul 2025

Metallurgical Coal Price Indices (USD/t)

The price relative for the HCCAU00 index to the PLVHA00 index during the January – June 2025 period ranged from 75.2% to 83.1%.

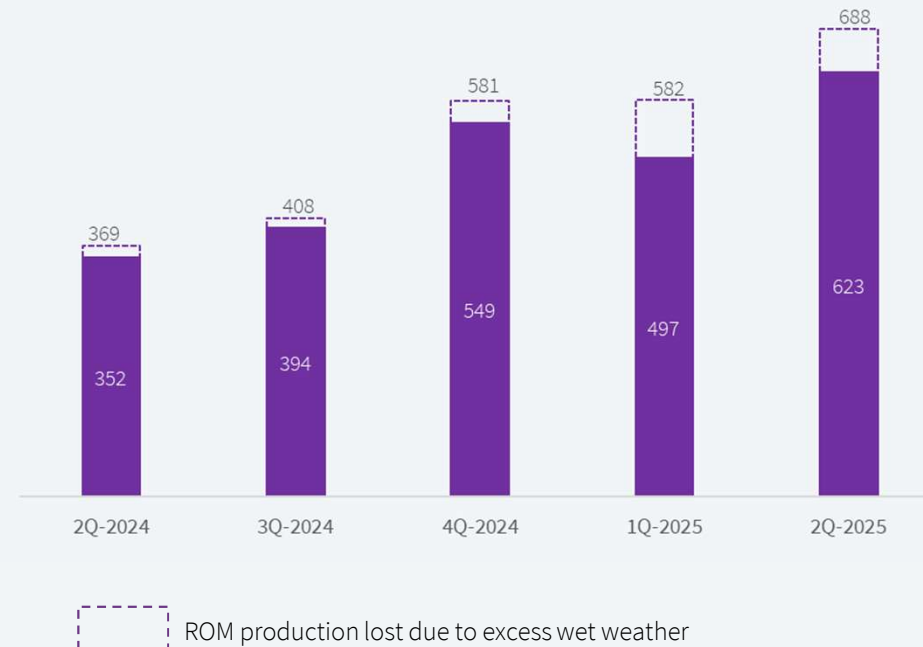


Operational Performance

12 month ramp up now complete

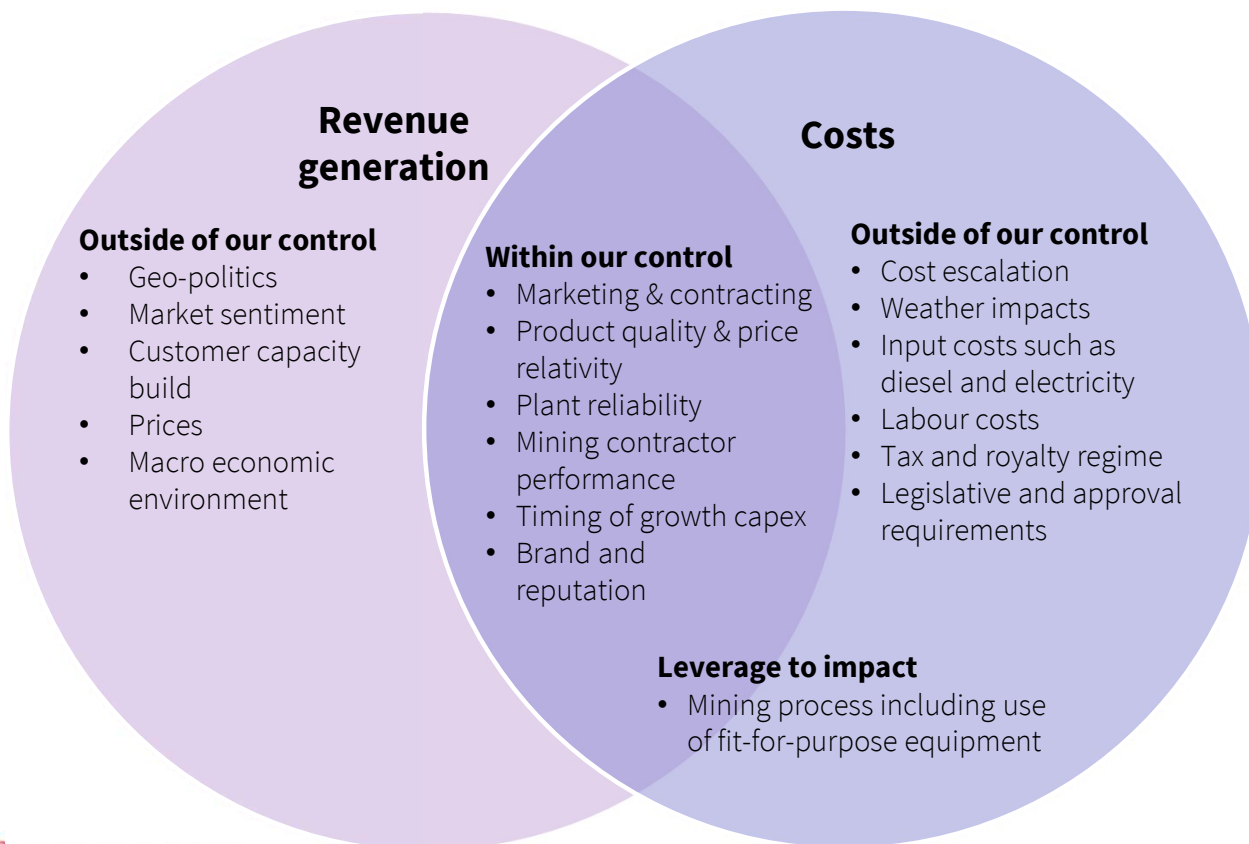
- Average monthly ROM production increased by ~30% from FY24 to 1H-2025.
- Rolling 12 months average monthly ROM production increased from ~432Kt/month in FY2024 to ~516Kt/month.
 - Delivered strong production in 2Q/2025 despite a slow start in April caused by severe rainfall.
- Reaching a **steady operating stage**, ROM production continued to improve.
- Continued focus on ROM **quality** alongside production quantity.

Average Monthly ROM Production by Quarter



Production Cost

Operational Discipline: Controlling the Controllables



Pembroke initiatives with the mining contractor:

- Coal mining trials to increase yield
- Reduce mining terrace widths
- Advancing in pit dumping
- Increase double bench heights
- Increase blast depth
- Reduce coal loss and dilution
- Larger excavator for coal preparation
- Resource blast crew scheduling
- Drive transparency and benchmarking on productivity improvement
- Involve equipment provider



Operational Performance

Planned yield and production achieved with quality feed

- The CHPP consistently achieving nameplate throughput, operating at ~90% plant utilisation.
- Achieved up to 81% yield when the target ROM blend is fed.
- Suboptimal ROM feed reduced by >70% compare with 1Q-25.
- Effective yield improved to 68% from 59%.
- Focus remains on ensuring the mining contractor delivers quality ROM and adopts improved high-quality ROM mining practices to minimise loss and dilution, further improving the effective yield.
- Shipped quantities increased by 32% since 4Q-2024 as production reaches steady state.
- Ongoing optimisation of feed proportions to balance plant operations, yield performance and ROM stock availability.
- Secured additional 1mtpa port capacity.



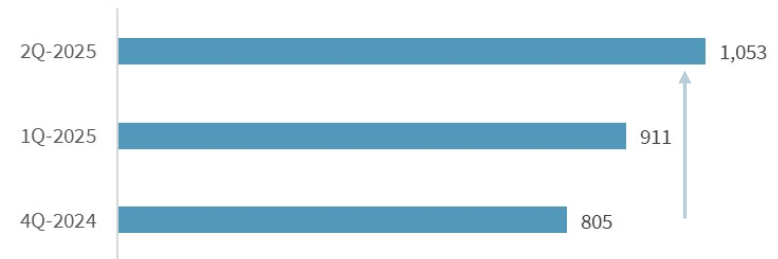
PEMBROKE

STEELMAKING COAL (1) (record-breaking rainfall in more than 3 decades) and Cyclone Alfred caused widespread serve damage across QLD

Plant Feed and Production



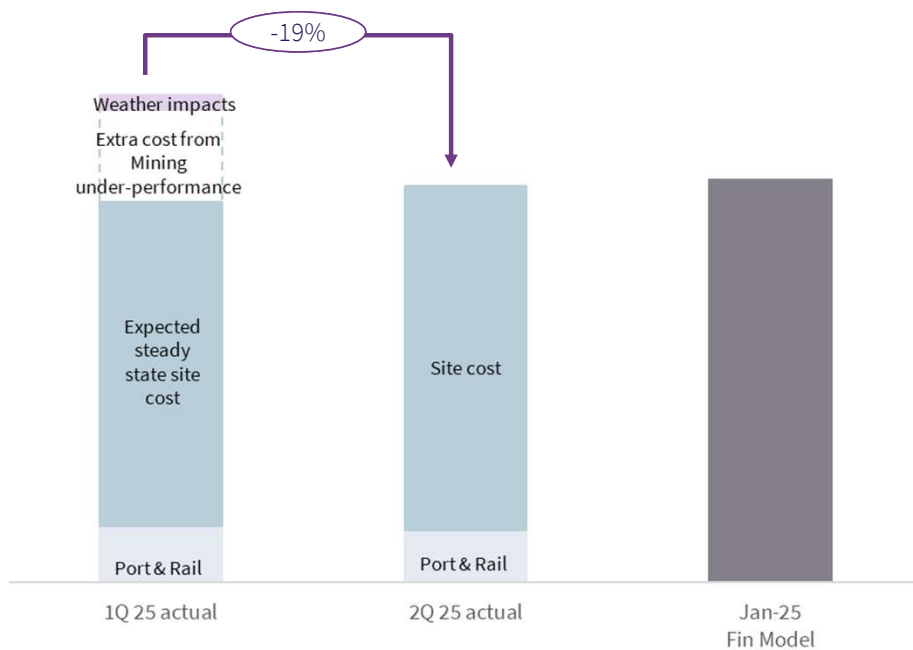
Product Shipped



Production Cost

Focus on high productivity and production cost reduction

C1 Cash Cost Per Tonne⁽¹⁾



- 2Q-2025 production cost has improved from 1Q-2025 mainly driven by:
 - Improved mining practices
 - Reduced wet weather impacts due to strong recovery post wet weather early in the quarter
- Overall mining at a steady state, but ongoing priorities include :
 - Continuing pit development
 - Improving sub-optimal ROM quality
 - Maintaining focus on quality ROM to reduce coal loss and dilution
- Ongoing contractor performance monitoring and guidance discussion



PEMBROKE

STEELMAKING COAL

(1) C1 Cash Costs includes costs associated with Mining, Onsite, Processing and Logistics, replicating net direct costs associated with production on per tonne basis. It excludes Marketing, Royalties and Offsite corporate costs. Individual cost per stage of production is calculated individually before being summed up. This ensures the cost reflects all costs incurred in production during the period.

© Pembroke Olive Downs Pty Ltd

Operations Summary

Achieving stable production

Achieved

- 12 month ramp up period to 1Q-2025, reaching stable production from 2Q-2025 onwards.
- Improved coal mining practice and improved yield.
- Remain focused on :
 - Efficient mining including assist the contractor improve the coal mining practice;
 - Maximise the processing plant;
 - Maintain competitive production cost.



STEELMAKING COAL



A photograph of a koala and its joey climbing a tree trunk. The koala is in the foreground, looking towards the camera, with its joey clinging to its back. The background is a blurred forest scene.

2. Health, Safety, Environment & Community



PEMBROKE

Health & Safety

Safety of our people and community is a core focus for Pembroke



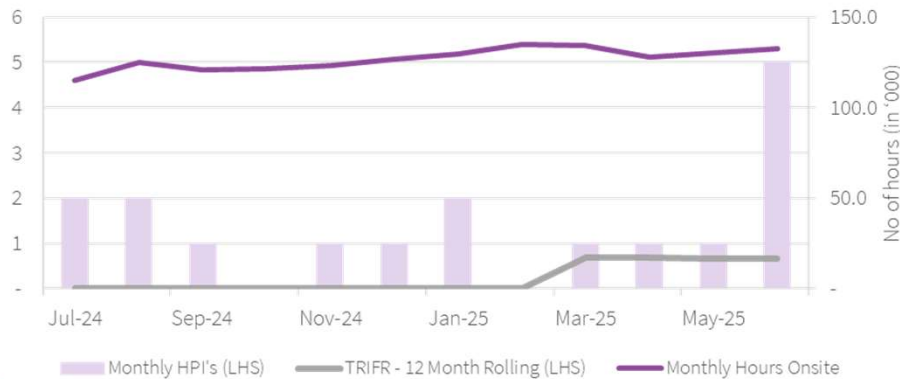
0.7

TRIFR⁽¹⁾ for employees and contractors in 2Q-2025.

0

LTIFR⁽¹⁾ for employees and contractors in 2Q-2025.

Monthly TRIFR & HPI's⁽²⁾ – Jul 2024 to Jun 2025



PEMBROKE

STEELMAKING COAL

- (1) TRIFR (rolling 12 months): Total Recordable Injury Frequency Rate and LTIFR: lost Time Injury Frequency Rate.
 (2) HPI's = High Potential Incidents. 1st injury in Olive Downs due to improper Thiess administrative procedure.
 (3) Pembroke is committed to pay under the ILUA.

Community

ILUA – Indigenous Land Use Agreement

(Traditional Owner partnership between Barada Barna Aboriginal Corporation And Olive Downs 2018)



37 (>6%)

Indigenous employees at the Olive Downs Complex

A\$250,000

Following commencement of mining operations, ongoing annual payment under ILUA⁽³⁾.

SIMP – Social Impact Management Plan update

(Developed in 2018 to meet regulatory approvals under Strong and Sustainable Communities Act Qld (2017))

- Social Impact Assessment (SIA) with local community to capture stakeholders' data for SIMP update
- Isaac Regional Council (IRC) #1 stakeholder and focussed efforts have enhanced IRC relationship, which will enable delivery of the Eco Village
- Eco Village = site-based accommodation which increases productivity for current operations and growth plans.

Environmental Update

Environment & Biodiversity

Environment

Water Management

- Recovery from prolonged wet season holdings underway, strategic use of excess mining water through the CHPP.
- Building wet weather resilience through increasing Mine Affected Water (MAW) storage capacity and planning for water release structures.

Climate: Fugitive Emissions (Methane) reduction assessment

- Commenced site-wide reduction fugitive emissions assessment, surveying 100+ holes to improve accuracy of annual greenhouse gas and climate reporting.



Bushfire Management

- Rapid fuel load assessment conducted for bushfire mitigation strategy and planning. Proactive backburning programs completed.

Biodiversity

Koala Clinic

- Successful Koala clinic operation providing health checks to Koalas and their joeys.
- Koala fence construction underway to stop koala's wandering onto mine access road.



Greater Gliders

- Nest box installation continues with a total of 854 installed throughout the river conservation area.
- In a **world first**, over 10% occupancy of nesting boxes with an increase in local population numbers in these areas.
- Active monitoring and health care of these shy and rare species ongoing.



PEMBROKE

STEELMAKING COAL

3. Financial Update



PEMBROKE

Financials

Highlights 2Q-2025 Results

(USD in millions)	2Q-2025	1Q-2025	Change
Revenue ⁽¹⁾	133	118	16
EBITDA	3	-	3
Interest expense	(18)	(34)	16
Net Operational CF	(36)	(31)	(5)
Net Investing CF	(11)	(30)	19
Net Financing CF	(12)	282	(294)
(USD in millions)	Jun-25	Mar-25	Change
Total assets	1,172	1,241	(61)
PP&E & development assets	830	836	(6)
Total debt ⁽²⁾	530	531	(1)
Total equity	378	413	(27)

2Q2025 Highlights

- USD133m Revenue from coal sales including steelmaking coal (USD118m) and industrial coal (USD16m).
- Average realised price USD126/t (1H: USD128/t)
 - Steelmaking coal USD142/t (1H: USD145/t)
 - Industrial coal USD68/t (1H: USD80/t)
- Total assets decreased mainly due to a reduction in Cash on hand from USD USD260m to USD201m.⁽⁴⁾

Capital Management

- The first coupon payment was paid on 18 August 2025.
- The Bank Guarantee facility is collateralized with cash of ~USD20m.



PEMBROKE

STEELMAKING COAL

(1) Revenue excluding interest revenue.

(2) Net of USD550m bond including bond discount establishment costs as at 31 March 2025.

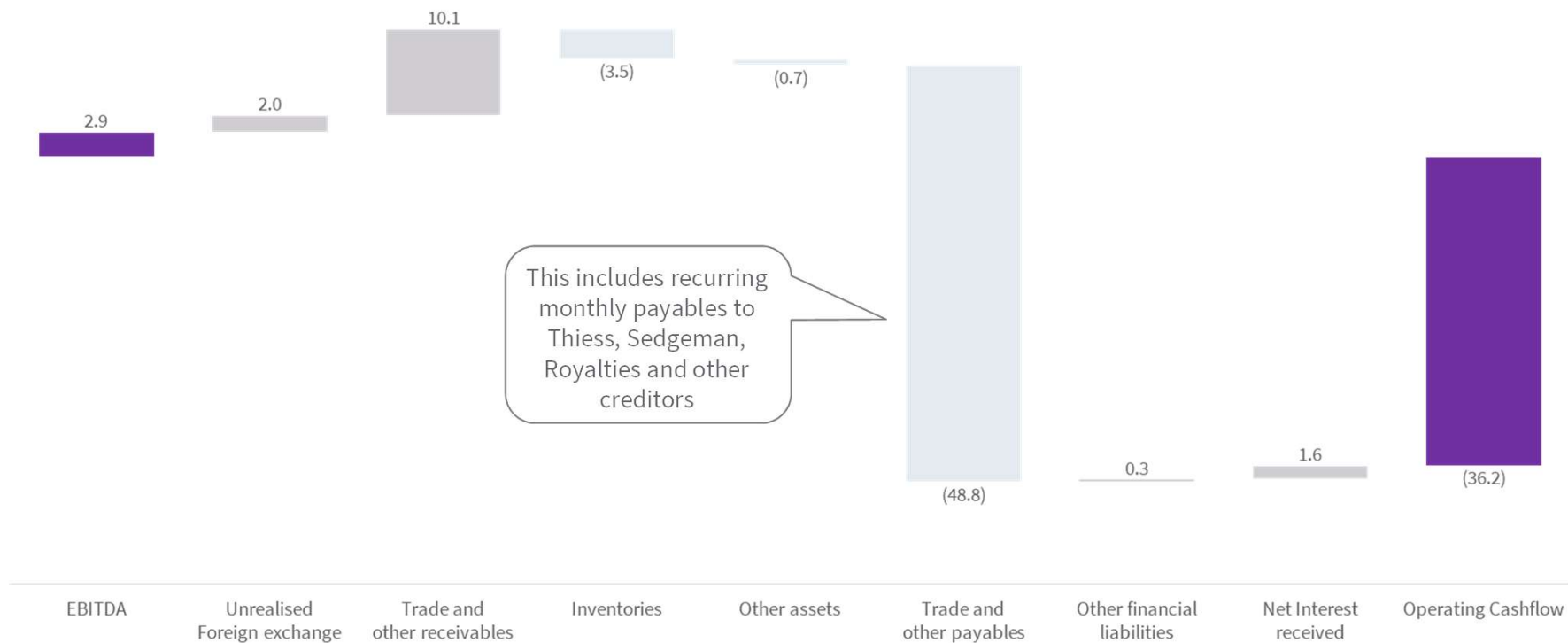
(3) Volume weighted average realised price for steelmaking coal and industrial coal

(4) Cash balance includes collateralized cash that support bank guarantees of ~USD20m.

© Pembroke Resources Pty Ltd

Operating Cash flow

2Q-2025 EBITDA to Operating Cash Flow



4. Priorities



PEMBROKE

FY2025 Priorities

Priorities Remain: Reliable, steady, efficient and productive operations



6 to 7 Mt

6 to 7 million tonnes of ROM

Despite the first three months impacted by weather events



4.5 Mt

4.5 million tonnes to be sold to Customers based on maximum utilization of CHPP



Price relativity Range

The expected average price relativity to the HCCAU00 Index is 99%+



Settlement of Contingent liabilities

Confidential settlement achieved with EPC contractor

Partial settlement of claim and commercial discussions remain ongoing with Mining contractor



Grow capacity

Enhance capacity of existing plant and materially progress second plant feasibility
Land compensation for Expansion progressing per expectation



Long term customer relationships

~75% of steelmaking coal production to be sold under Term contracts for JFY2025/26.



PEMBROKE

STEELMAKING COAL

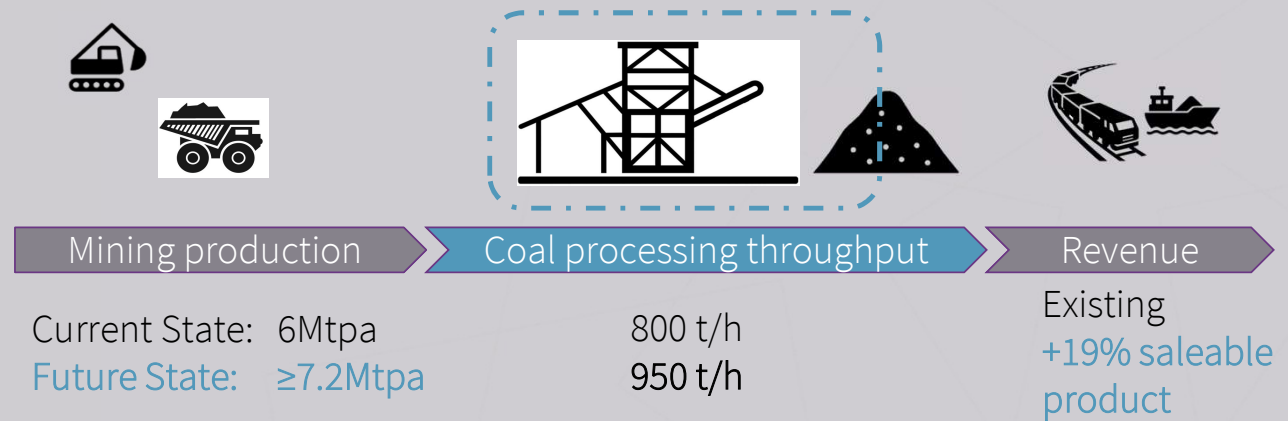
Growth Project Update

Monitoring Market Signals for Capacity FID and Drive Operational Optimisation



Growing Capacity

Optimisation / Expansion (de-bottlenecking) of the existing plant



Benefits

- Leverage knowledge to second plant
- Efficiency gains from economies of scale
- Revenue growth

Considerations

- Mining performance as ROM production increase is required
- Need and timing of ancillary facilities expansion

Questions



PEMBROKE

Appendices

- 1) 2Q-2025 Management Accounts
- 2) Olive Downs HCC Coal Quality & Market
- 3) Olive Downs Complex At A Glance
- 4) Reserves and Resources



PEMBROKE

1) 2Q-2025 Management Accounts

Profit or Loss and other comprehensive income

(USD in millions)	2Q-2025	1Q-2025	1H-2025
Revenue ⁽¹⁾	133	118	252
Operating costs	(98)	(92)	(191)
Royalties	(16)	(14)	(29)
Other expenses	(17)	(12)	(29)
EBITDA	3	-	3
Depreciation	(20)	(18)	(38)
EBIT	(17)	(18)	(35)
Finance cost (net)	(18)	(34)	(53)
Profit before tax	(35)	(52)	(87)
Income tax benefit	-	16	16
Profit after tax	(35)	(37)	(72)

- Revenue excludes interest revenue, which is included as Net finance costs below EBIT
- Majority of the Royalties are the Queensland State royalties, but also includes private royalties
- Other expenses include:
 - inventory movement reflects inventory produced during the period that has not been sold as at the end of the period
 - minor amount of coal purchased from third parties to supplement shipments
 - FX movements
 - administrative expenses
- Recognition of tax losses has ceased due to uncertainty of current coal price environment.
- Conversion from AUD to USD functional currency is as follows:
 - assets and liabilities have been converted using spot rate as at the balance date
 - equity have been converted at historical rates that applied at the time of the transaction
 - Profit and loss using the average rate over the relevant period.

1) 2Q-2025 Management Accounts

Statement of Financial Position

(USD in millions)		Jun-25	Mar-25
Current assets	Cash	182	241
	Receivables	33	44
	Inventory	40	37
	Other assets	7	5
	Total	262	327
Non-current assets	PP&E	169	177
	Mine properties	661	659
	Deferred tax assets	73	70
	Other assets	6	7
	Total	910	916
Total assets		1,172	1,241

(USD in millions)		Jun-25	Mar-25
Current liabilities	Payables	95	128
	Loans & borrowings	-	-
	Lease liabilities	45	38
	Other	1	-
	Total	141	166
Non-current liabilities	Loans & borrowings	530	531
	Lease liabilities	94	102
	Rehabilitation provision	29	28
	Total	654	661
Equity	Share capital	652	652
	Reserves	(52)	(51)
	Accumulated losses	(223)	(188)
	Total	378	413
Total liabilities + equity		1,172	1,241

- PP&E includes lease accounted mining equipment
- Mine properties includes tenement, mine construction, box cut development and capitalized costs & interest
- Deferred tax assets is tax losses net of deferred tax liability relating to temporary differences
- Payables include accruals and provisioning for invoices received and unpaid with contractors and royalties
- Lease liabilities associated with the lease accounted equipment

1) 2Q-2025 Management Accounts

Statement of Cash Flows

- Payments to suppliers included:
 - 'Catch up' payment made to Mining Contractor for payments withheld during FY24 in 1Q-2025
- Investing activities for the period included:
 - A portion of the EPC Contract settlement for the CHPP agreed during 1Q-2025
 - Balance paid in April and June 2025
- Movements in borrowings during the year include:
 - Replacement of term debt facilities with the USD550m bond proceeds
- Lease payments relate mainly to payments made under the mining services contract for the mining equipment

(USD in millions)	2Q-2025	1Q-2025	1H-2025
Receipts from customers ⁽¹⁾	142	135	277
Payments to suppliers	(180)	(147)	(334)
Net interest received/(paid)	2	(19)	(11)
Net cashflows from operating activities	(36)	(31)	(67)
Net cashflows from investing activities	(11)	(30)	(40)
Funding from related parties	-	-	-
Net proceeds/repayment of borrowings	(3)	291	288
Lease payments	(10)	(9)	(19)
Net cashflows from financing activities	(12)	282	269
Net decrease in cash and cash equivalents	(59)	221	161
Cash & cash equivalents at end of period	182	241	182



STEELMAKING COAL

(1) Coal sales and other receipts.
Numbers on this page may not add up due to rounding.

2) Olive Downs HCC Quality & Market

Receiving price relativity equal to its peers within a Year

- Olive Downs Hard Coking Coal (ODHCC) is a Rangal Coal which is a long-established coal type with neighbouring mines producing from the same coal seams
 - Low volatile matter content
 - High Coke Strength
 - Low sulphur content
 - Low wall oven pressure < 0.5 psi
- Additional qualities of ODHCC includes:
 - Higher coke yield
 - Higher CSR
 - High cold coke strength
 - Lower Phosphorous
- ODHCC is now accepted in the market as akin to HCCAU00
- Both PLVHA00 and HCCAU00 quality coals are essential to make coke and therefore hot iron.
- Blast furnace iron production remains the lowest cost and most efficient route to iron production and expected to be preferred for next several decades

Quality Parameters ADB	Olive Downs HCC	PLV HCC	HCC
Also known as:	Hard Coking Coal; Qld Rangals	Premium Low Vol, PLV, PMV	Hard Coking, 2nd Tier, Qld Rangals
Platts Code		PLVHA00	HCCAU00
CSR	62 – 64	70	62
Volatiles	19.5%	20%	21.5%
Ash	9.8% + 0.5%	10.5%	8%
Sulphur	0.45%	0.65%	0.45%
Historical Price Relativity to PLVHA00 ⁽¹⁾	87-88%	100%	88%

3) Olive Downs Complex at a Glance

A world class independent & large-scale producer of steelmaking coal.

Strategically Located

Bowen Basin, Queensland

Existing mature basin

Surrounded by established infrastructure

Mining friendly jurisdiction

Two Domains

Olive Downs

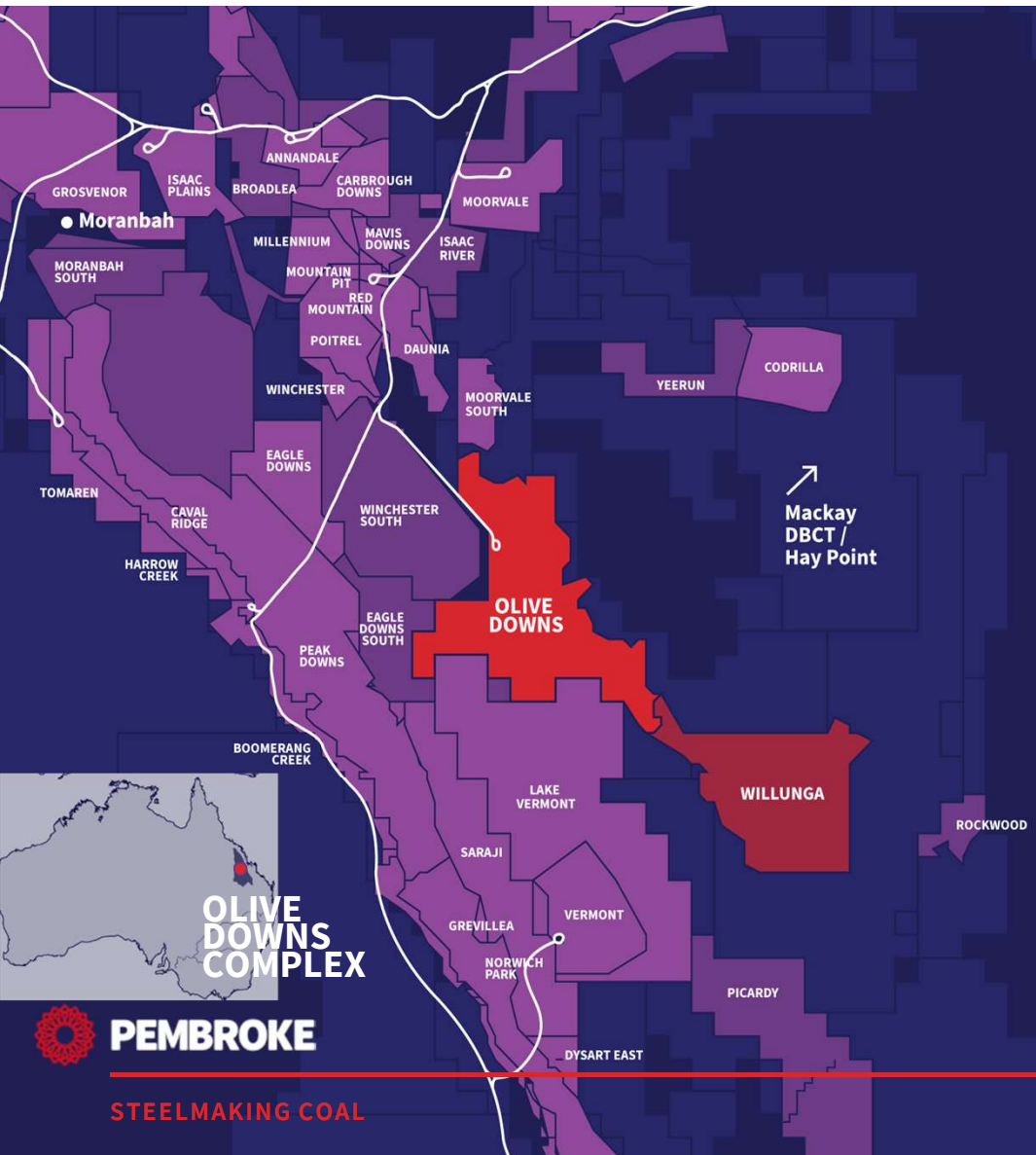
6 Mtpa -12/15 Mtpa ROM

Willunga

5-8 Mtpa ROM

Three Mining Leases Granted

EA Approval covers Life of Mine of >75 years



3) Olive Downs Complex at a Glance

A World Class and Rare Asset



Strategically Located

Bowen Basin, Queensland

Existing mature basin

Surrounded by established infrastructure

Mining friendly jurisdiction



Large Size & Scale

527Mt OC JORC Reserve

843Mt OC JORC resource

2 Billion+ tonne underground target

First quartile cash cost



High Volume & Long Life

Stage 1 6 Mtpa ROM capacity

**Stage 1.1
Plant enhancement
1.5Mtpa ROM**
Additional capacity

**Stage 2
Expansion
7.5 Mtpa ROM**
Additional capacity



Approved

Three mining leases granted

EA approval covers life of mine of >75 years

EA granted (2019)

EPBC granted (2020)



90%

Steelmaking coal

LV HCC (Stage 1 & 2) and ULV PCI (Stage 3)



Construction & Operations

Phase 1

Commenced coal extraction 2023

First sales January 2024



1,000+ Workforce

>1,000 people at 20Mtpa production

The fleet of 21 autonomous CAT 794AC/ 793F haul trucks results in increased operating productivity & efficiency, reduced risks and improved on-site safety as run-rate production is achieved



ESG

Leading edge

Fully embedded ESG approach recognized as ESG best practice

ILUA and safety management plans in place

30,000-hectare conservation area

Compliant with equator principles

3) Olive Downs Complex at a Glance

Key Operational Contracts with Investment Grade Counterparties

SEDGMAN

CHPP Operations & Maintenance

Best in Class Designer and Operator of CHPP's

Built and operates several similar plants in the Bowen Basin

Initial three-year contract with ability to extend

BBB- rated (S&P)

THIESS

Mining Services

Tier 1, globally recognised Mining Contractor

Operating onsite since early 2023

Contracted to 2028

CAT Autonomous fleet operational

BBB- rated (S&P)



Rail

Contracted with Aurizon (access and haulage)

Currently active on take or pay basis

Covers Stage 1 production volumes (ten year agreement to 30 June 2030)

BBB+ rated (S&P)



Port

Contract with DBCT (lowest cost, common user facility)

Currently active on take or pay basis

Covers Stage 1 production volumes

Evergreen options to extend

3) Olive Downs Complex at a Glance

The Integrated Complex

OLIVE DOWNS COMPLEX

STEELMAKING COAL



PEMBROKE



4) Reserves and Resources

527 Mt of JORC Coal ROM Reserves

Coal reserves – Olive Downs Project

Mining location	Ownership (%)	Method	Coal Type	Reserves			Marketable Reserves				
				Proved	Probable	Total	Proved	Probable	Total	Moisture Basis	Ash
				(Mt)	(Mt)	(Mt)	(Mt)	(Mt)	(Mt)	(%)	% (ad moisture)
Olive Downs South	100	OC	Met / Industrial	218.2	85.0	303.2	177.9	68.1	246.0	10	Met 10-10.5% Indus 22-24%
Willunga	100	OC	PCI / Industrial	0	224	224	0	163	163	10	PCI 10% Indus 17%
Total				218.2	309.0	527.2	177.9	231.1	409	10	

Resources (<300m Depth)

Lease	Measured Insitu Tonnes (Mt)	Indicated Insitu Tonnes (Mt)	Inferred Insitu Tonnes (Mt)	Totals
Olive Downs South	256	114	76	446
Willunga	157	120	76	353
Totals	413	234	152	799

JORC Resources reporting by:

Olive Downs South: Lyndon Pass – Encompass, 2024
Willunga: Mal Blaik - JB Mining Services, 2016

JORC Reserves reporting by:

Olive Downs South: Vaughan Peake – Encompass, 2024
Willunga: Mat Fitzsimmons – Encompass, 2017



PEMBROKE

STEELMAKING COAL



Thank you

**OLIVE
DOWNS
COMPLEX**



PEMBROKE

STEELMAKING COAL