



Passenger numbers per week

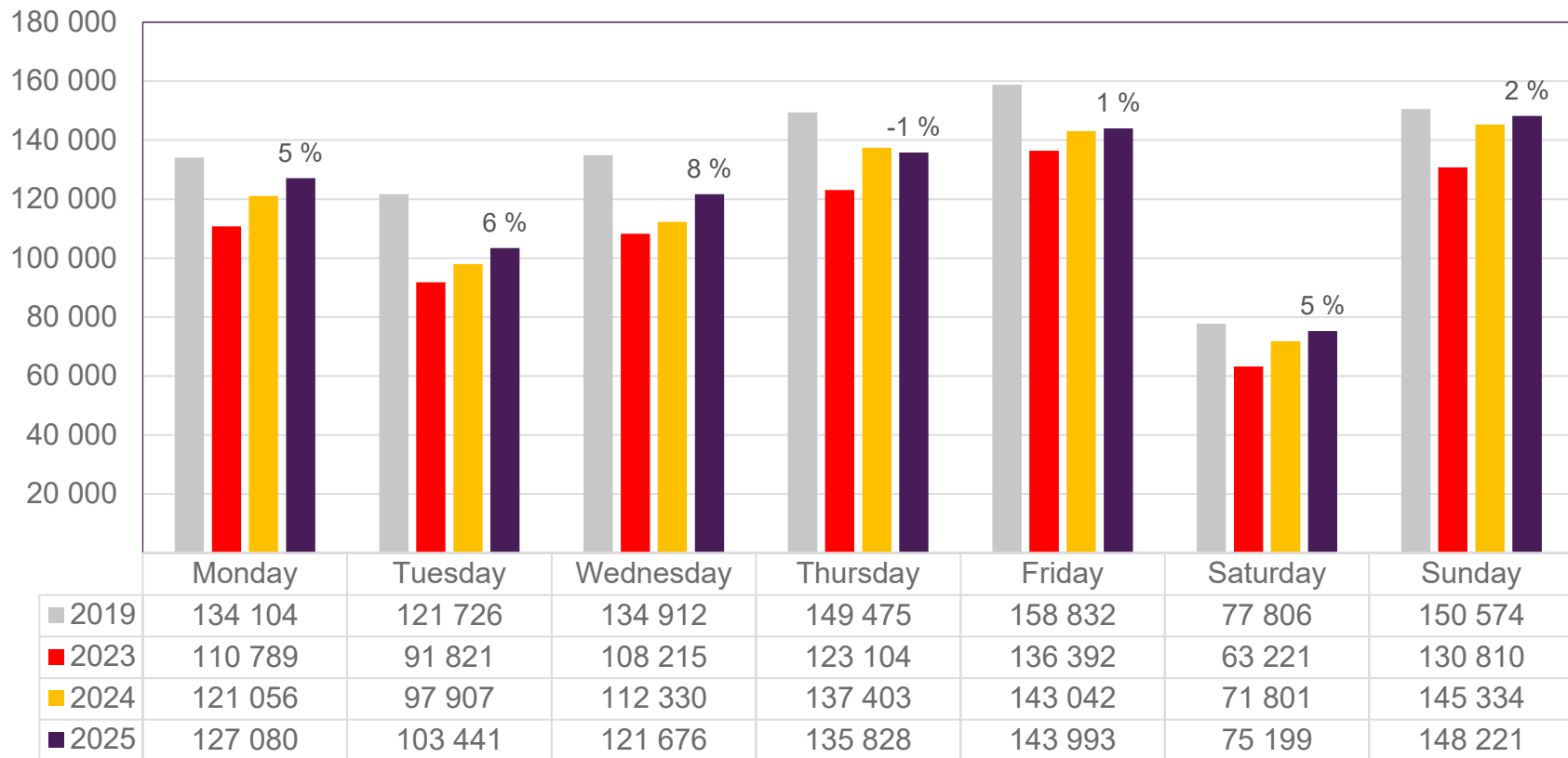
Preliminary figures

- The figures for the previous week are preliminary. It takes some time for all passenger numbers to be reported, so the figures for the previous week may be lower than the final figures.
- The figures are taken from SIA, Avinor's traffic database.

Top 10 airports, total week 6

Airport	2019	2023	2024	2025	2025 vs. 2024	
					Change	Change %
Oslo/Gardermoen	484 057	383 834	408 762	427 961	19 199	5 %
Bergen/Flesland	104 305	99 021	102 973	102 245	-728	-1 %
Trondheim/Værnes	79 641	68 408	72 122	70 008	-2 114	-3 %
Stavanger/Sola	71 272	59 281	62 762	63 591	829	1 %
Tromsø/Langnes	50 152	40 649	56 789	60 985	4 196	7 %
Bodø	29 233	27 369	29 352	30 007	655	2 %
Ålesund/Vigra	19 046	16 131	16 589	16 077	-512	-3 %
Harstad/Narvik/Evenes	12 337	10 558	13 424	13 517	93	1 %
Kristiansand/Kjevik	18 776	13 279	13 149	12 802	-347	-3 %
Bardufoss	3 758	3 424	3 536	3 535	-1	0 %

Passengers Avinor total per day, week 6

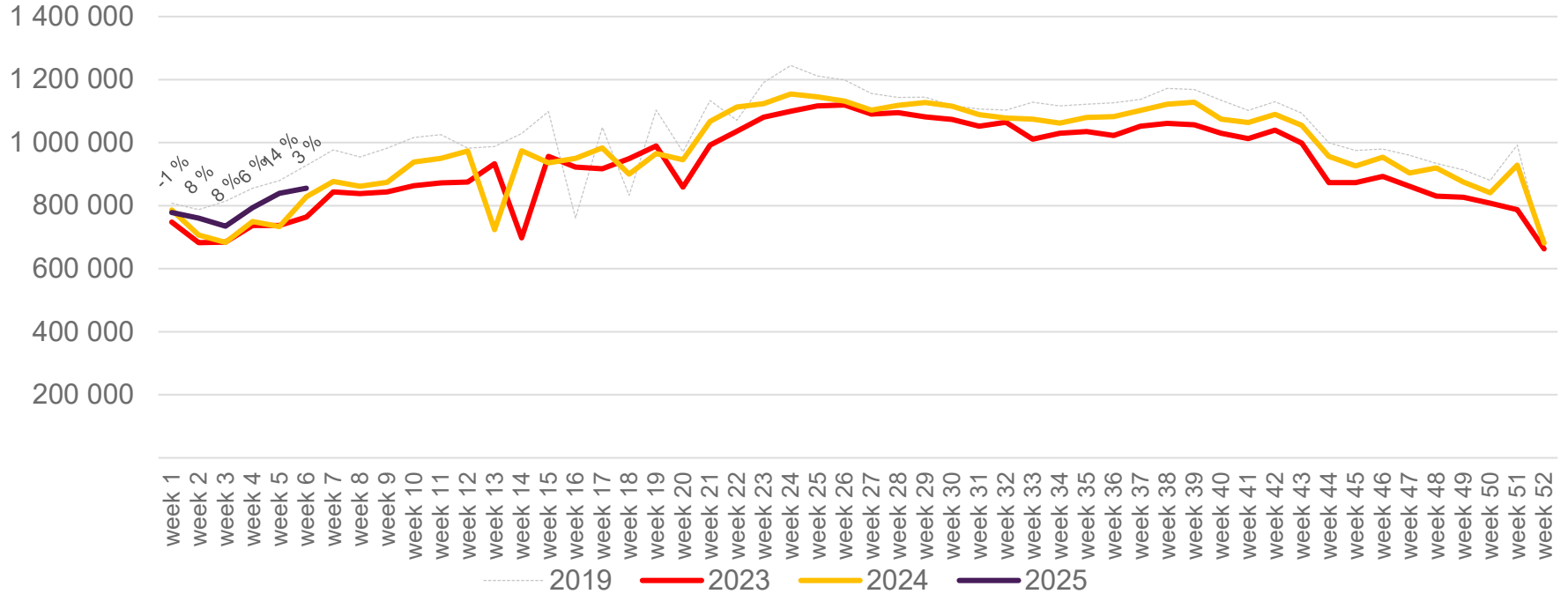


The change is measured against the same week in 2024

Source: SIA, Avinor Statistics

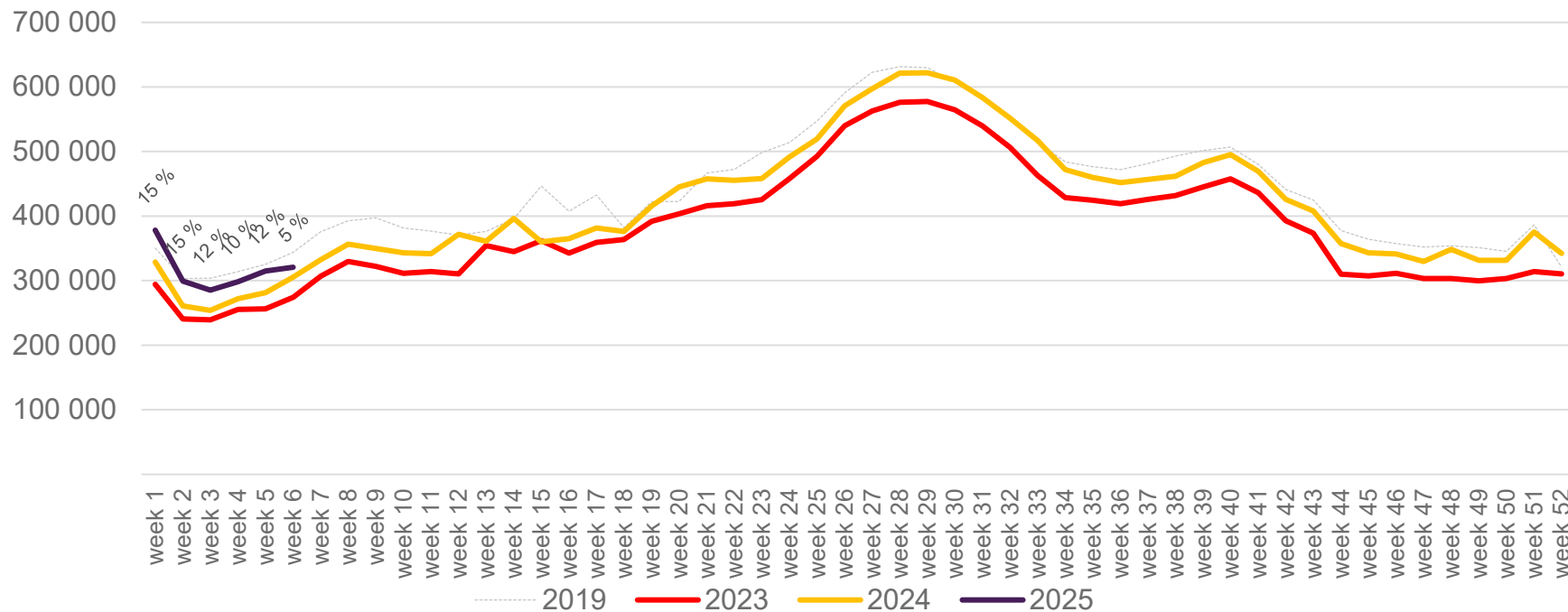
Passengers Avinor total per week

The change is measured against the same week in 2024



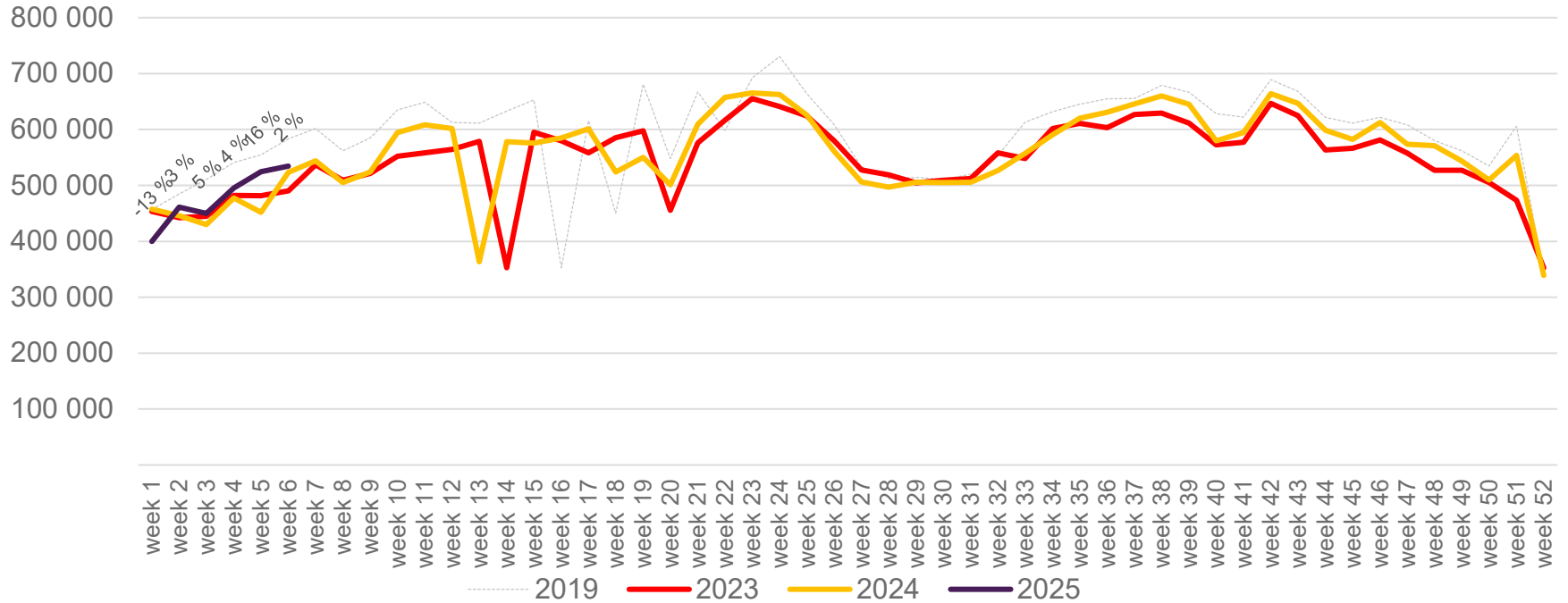
Passengers Avinor international per week

The change is measured against the same week in 2024

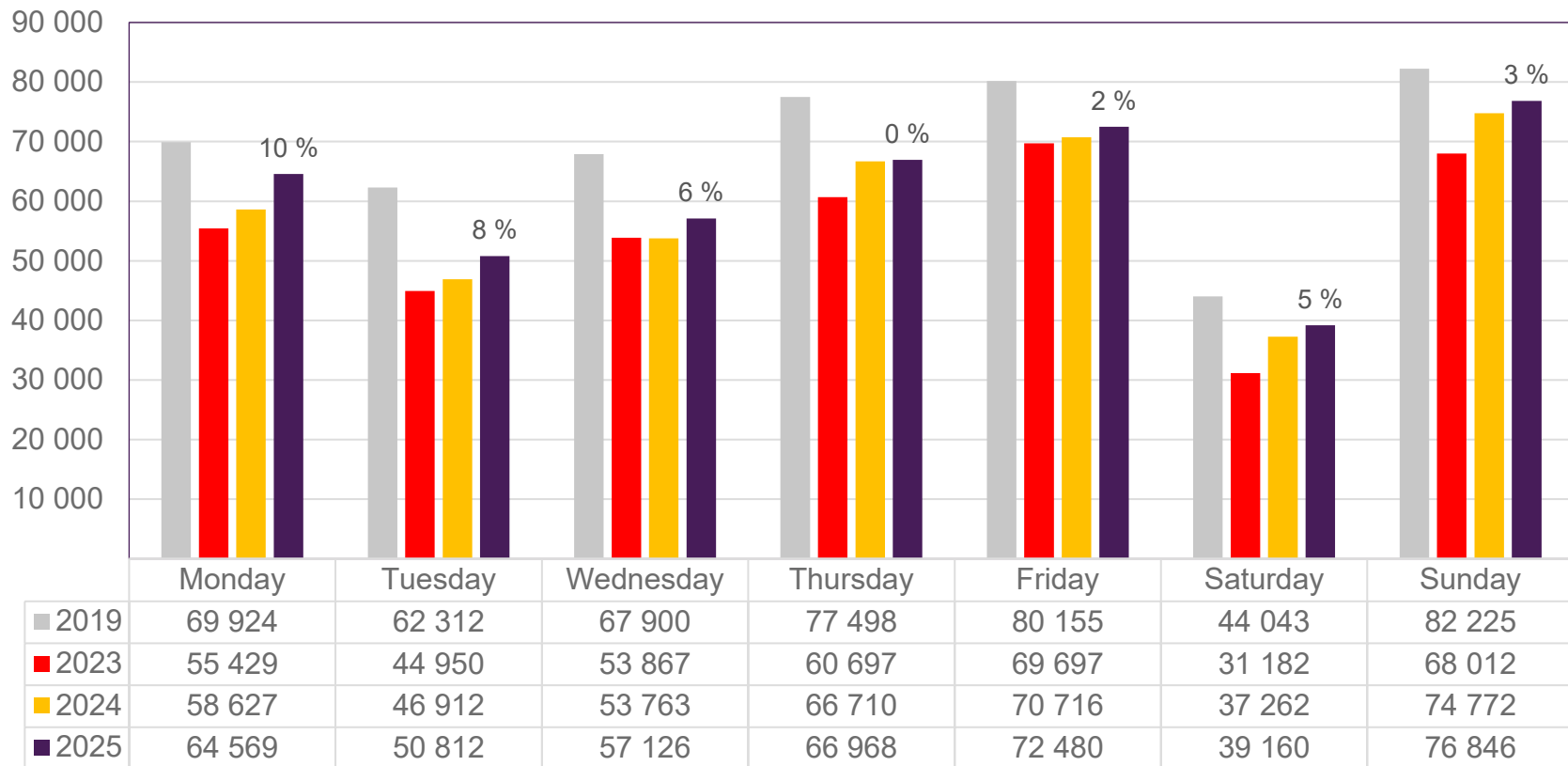


Passengers Avinor domestic per week

The change is measured against the same week in 2024



Passengers OSL total per day, week 6

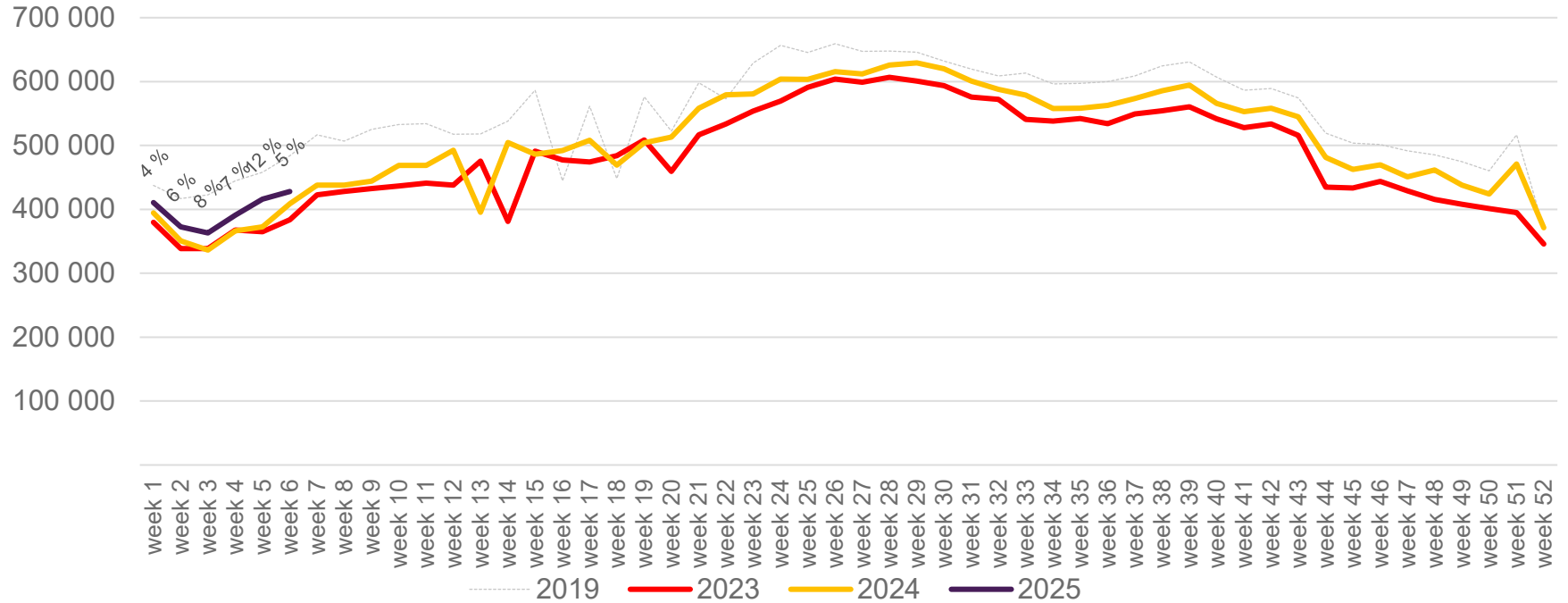


The change is measured against the same week in 2024

Source: SIA, Avinor Statistics

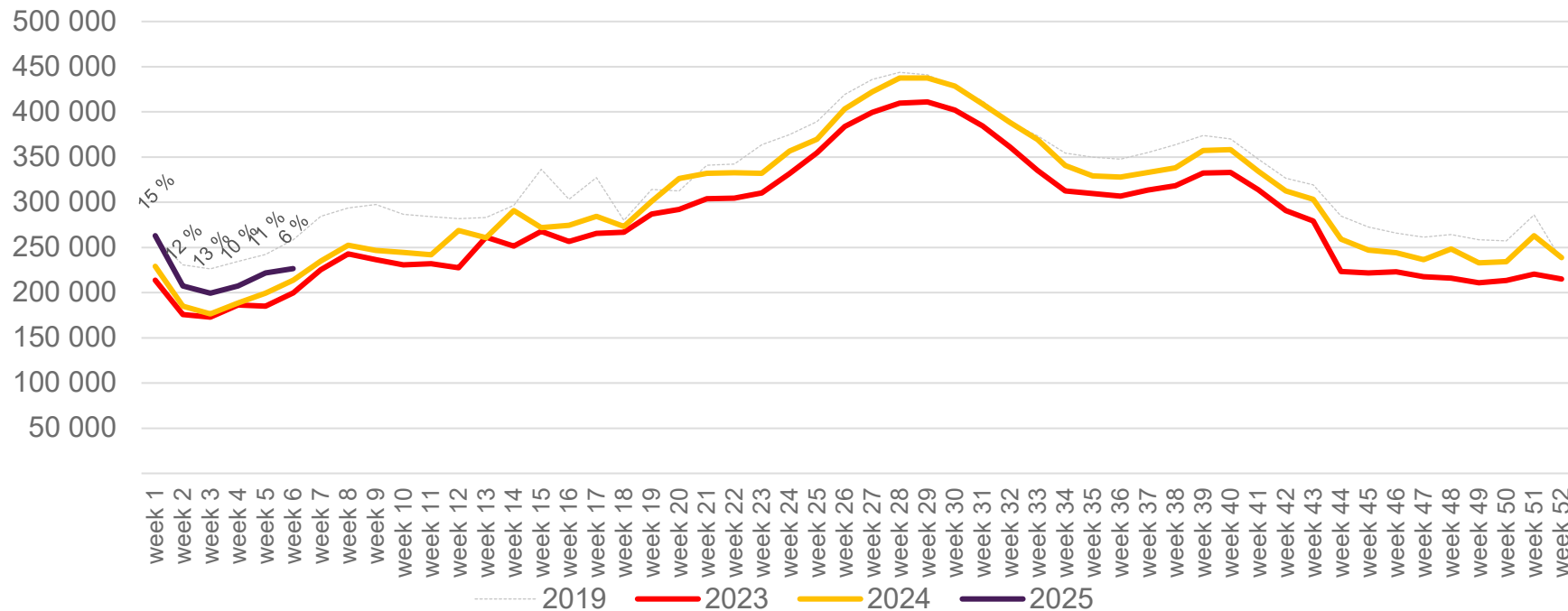
Passengers OSL total per week

The change is measured against the same week in 2024



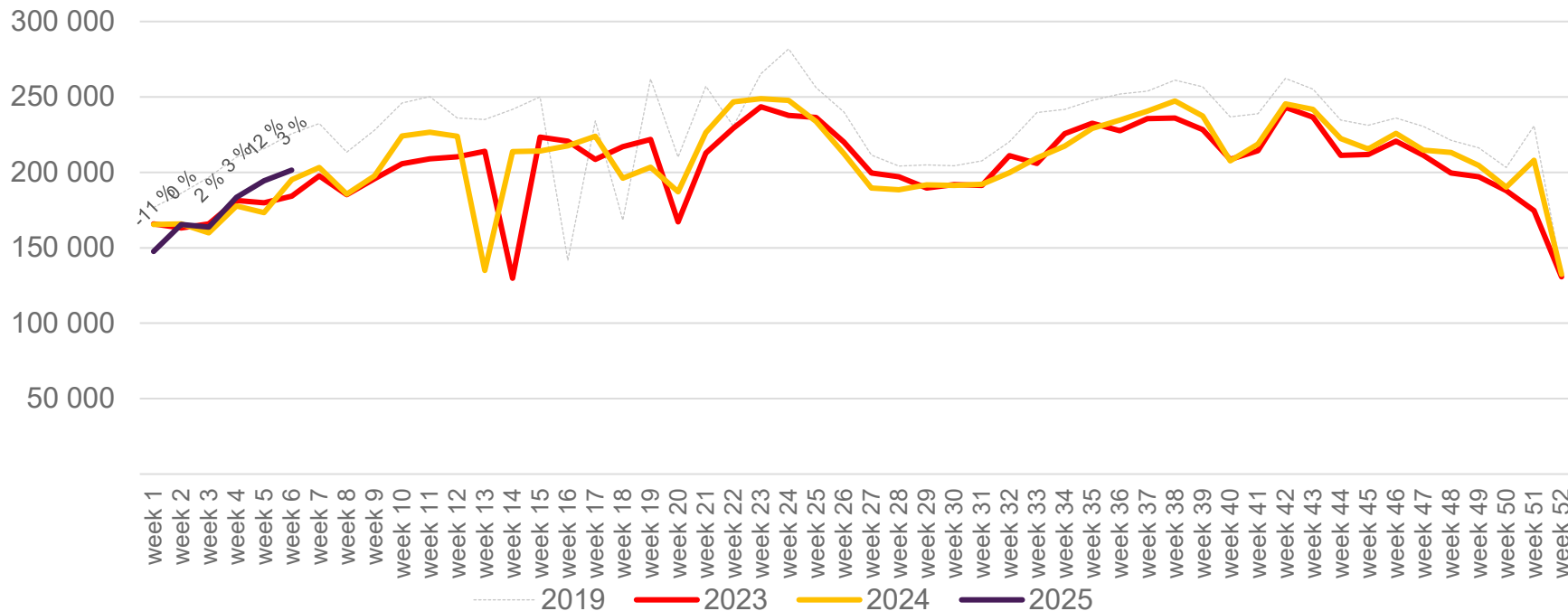
Passengers OSL international per week

The change is measured against the same week in 2024

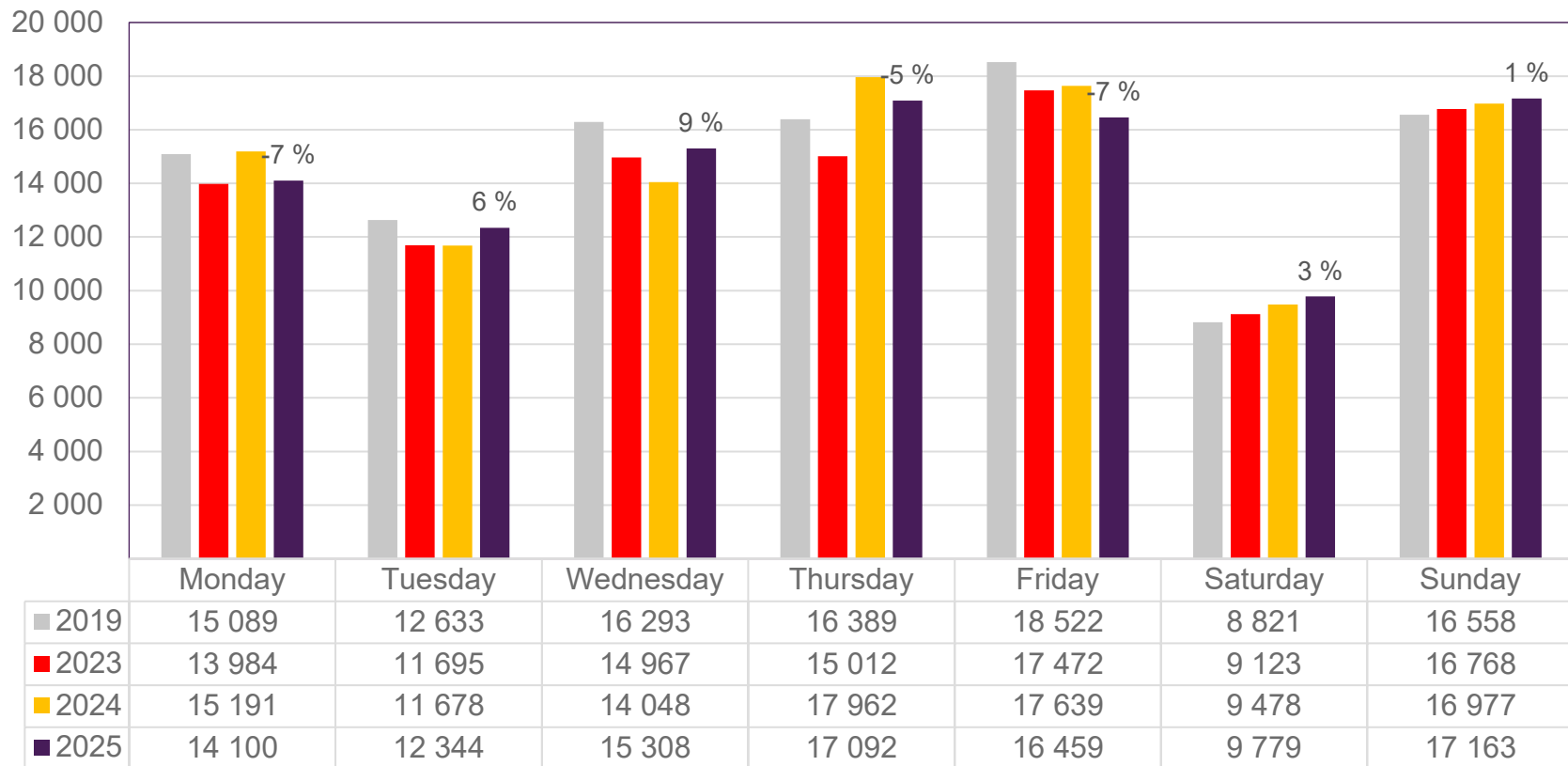


Passengers OSL domestic per week

The change is measured against the same week in 2024



Passengers BGO total per day, week 6

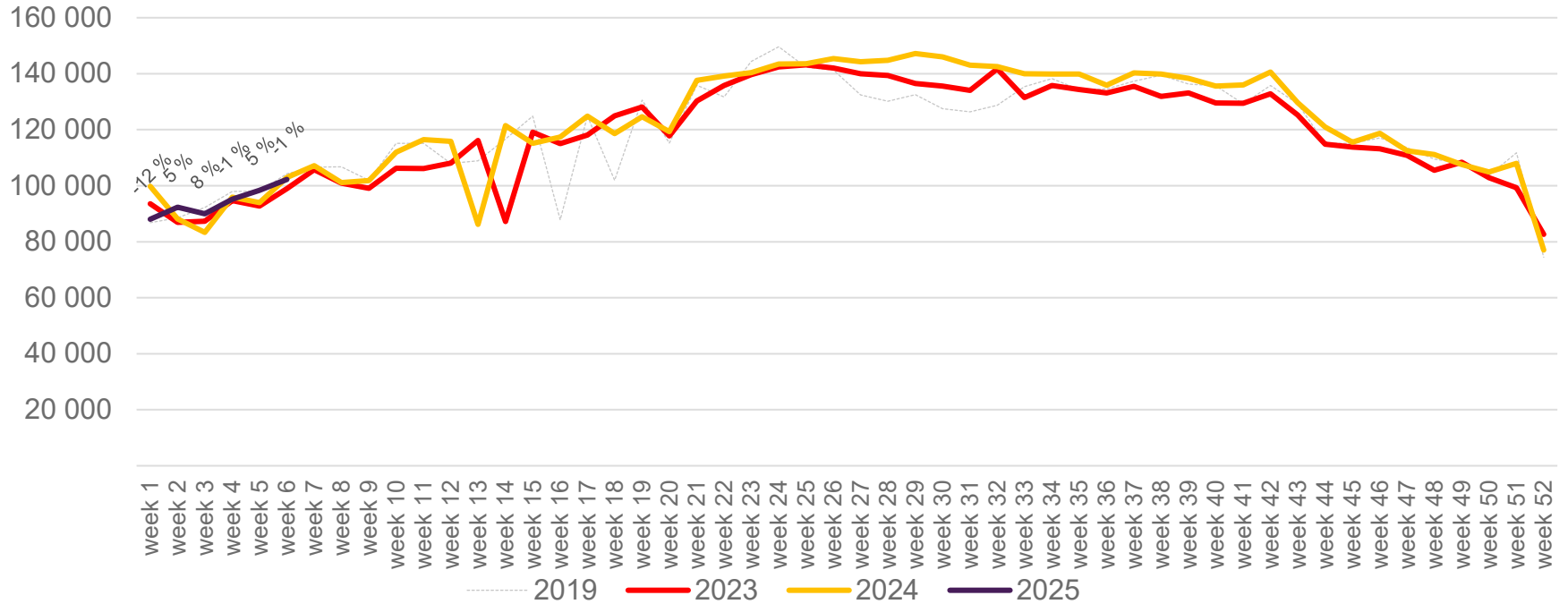


The change is measured against the same week in 2024

Source: SIA, Avinor Statistics

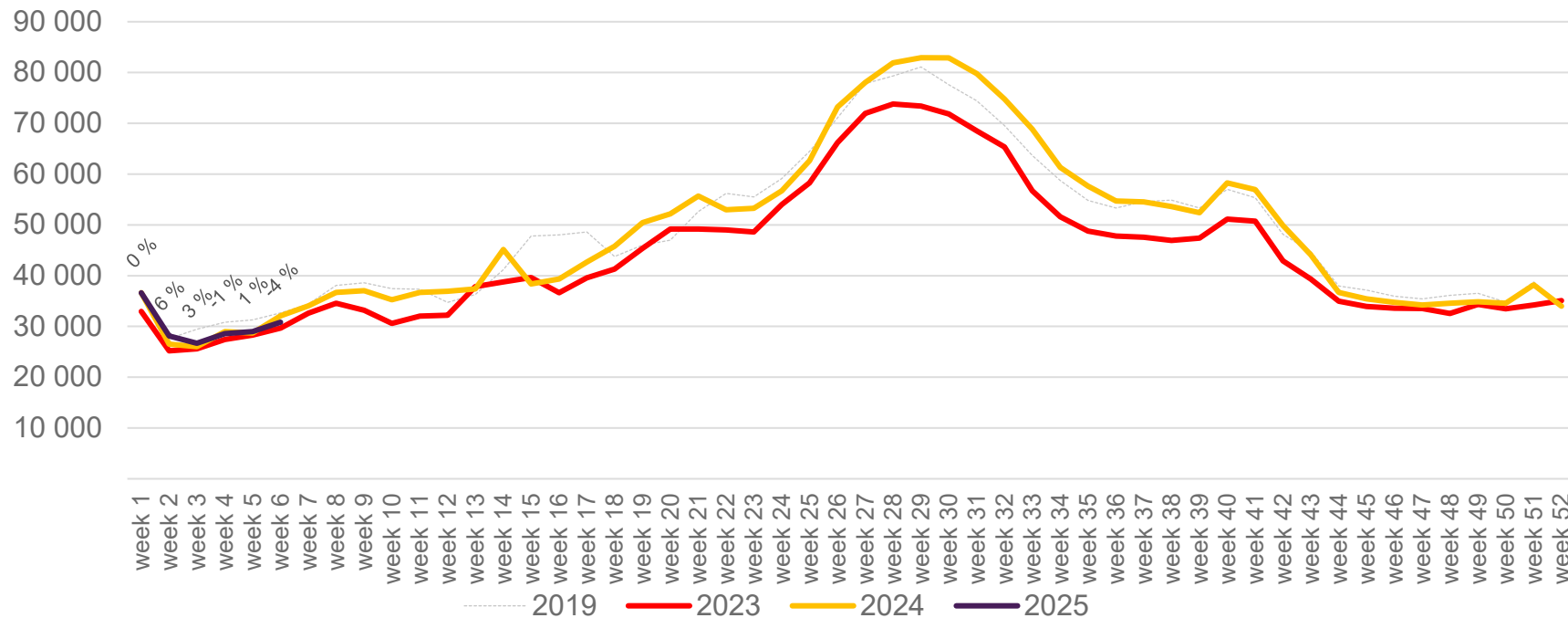
Passengers BGO total per week

The change is measured against the same week in 2024



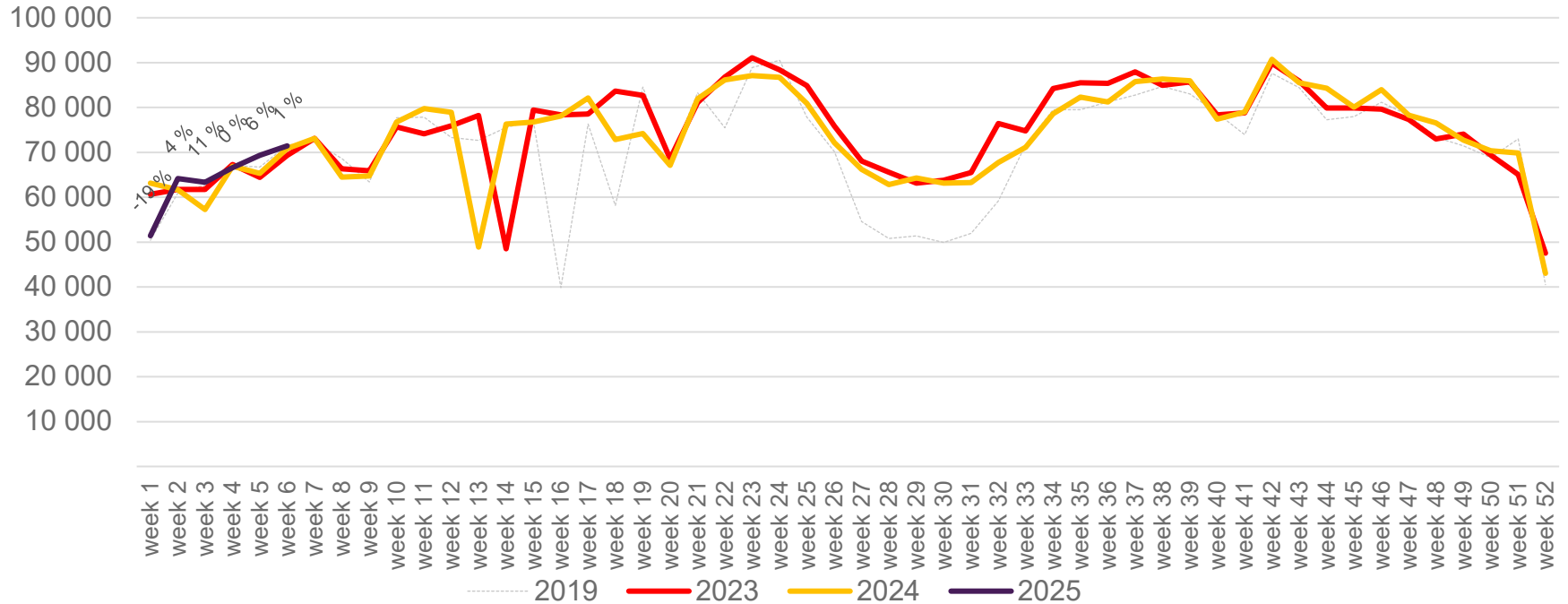
Passengers BGO international per week

The change is measured against the same week in 2024

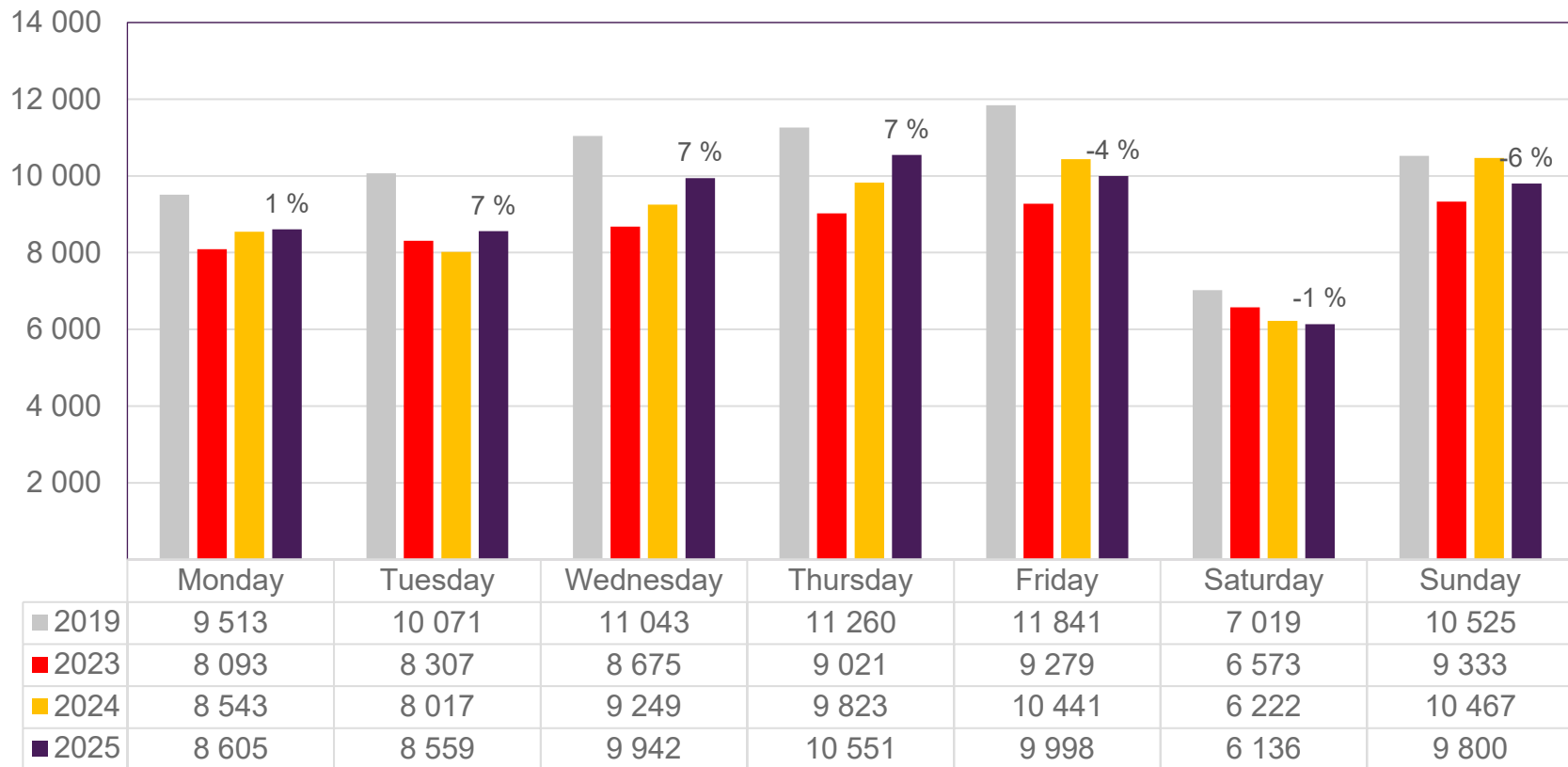


Passengers BGO domestic per week

The change is measured against the same week in 2024



Passengers SVG total per day, week 6

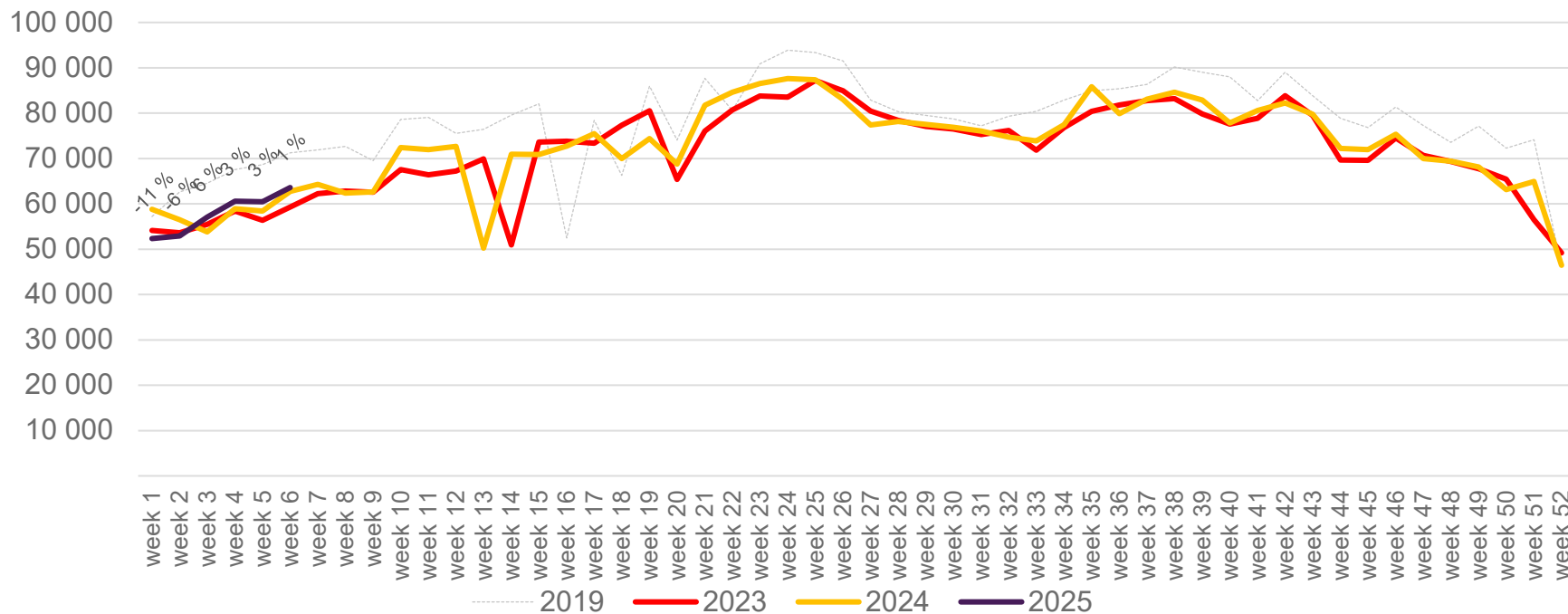


The change is measured against the same week in 2024

Source: SIA, Avinor Statistics

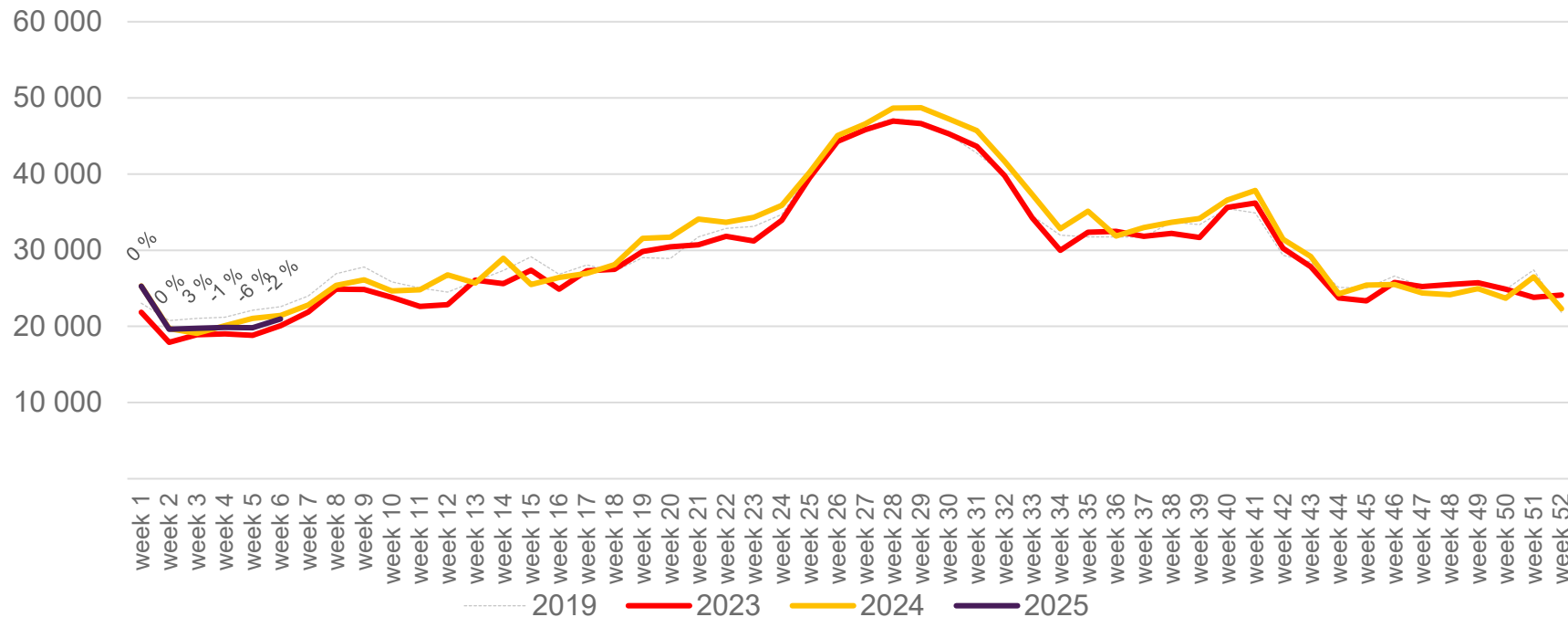
Passengers SVG total per week

The change is measured against the same week in 2024



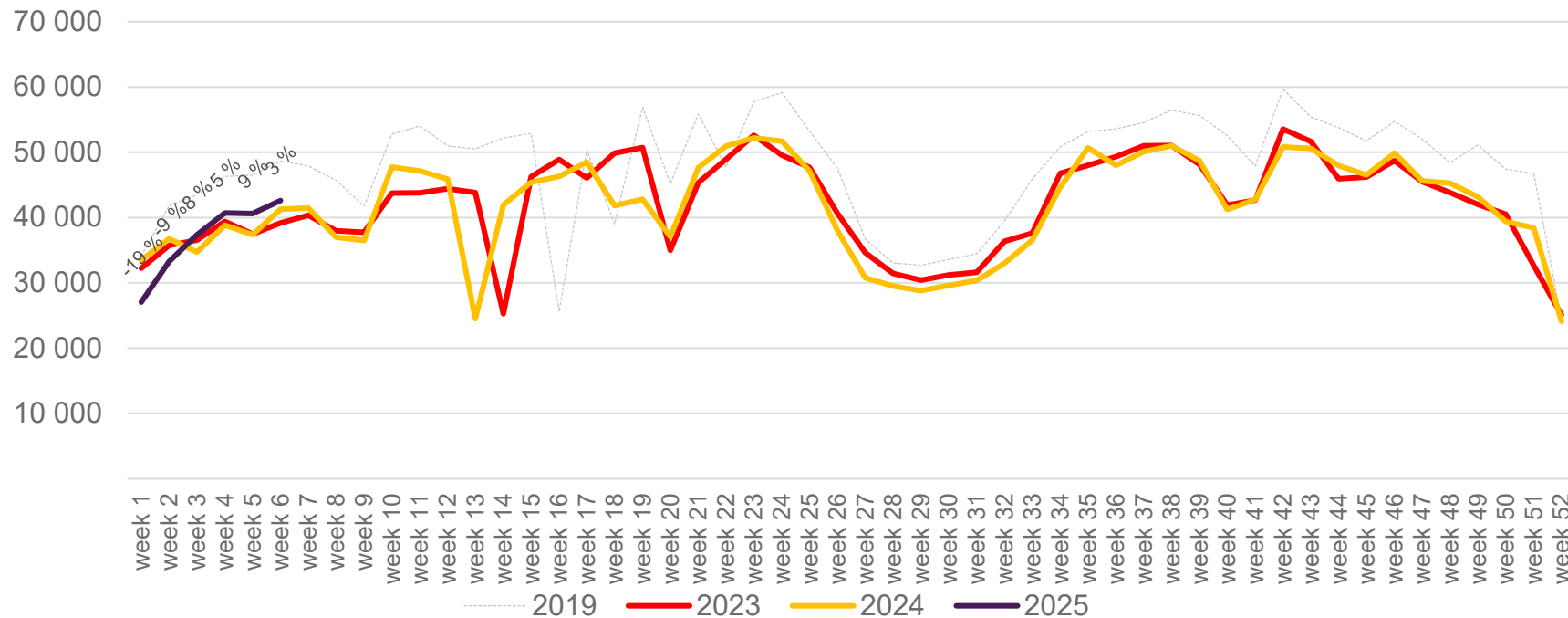
Passengers SVG international per week

The change is measured against the same week in 2024

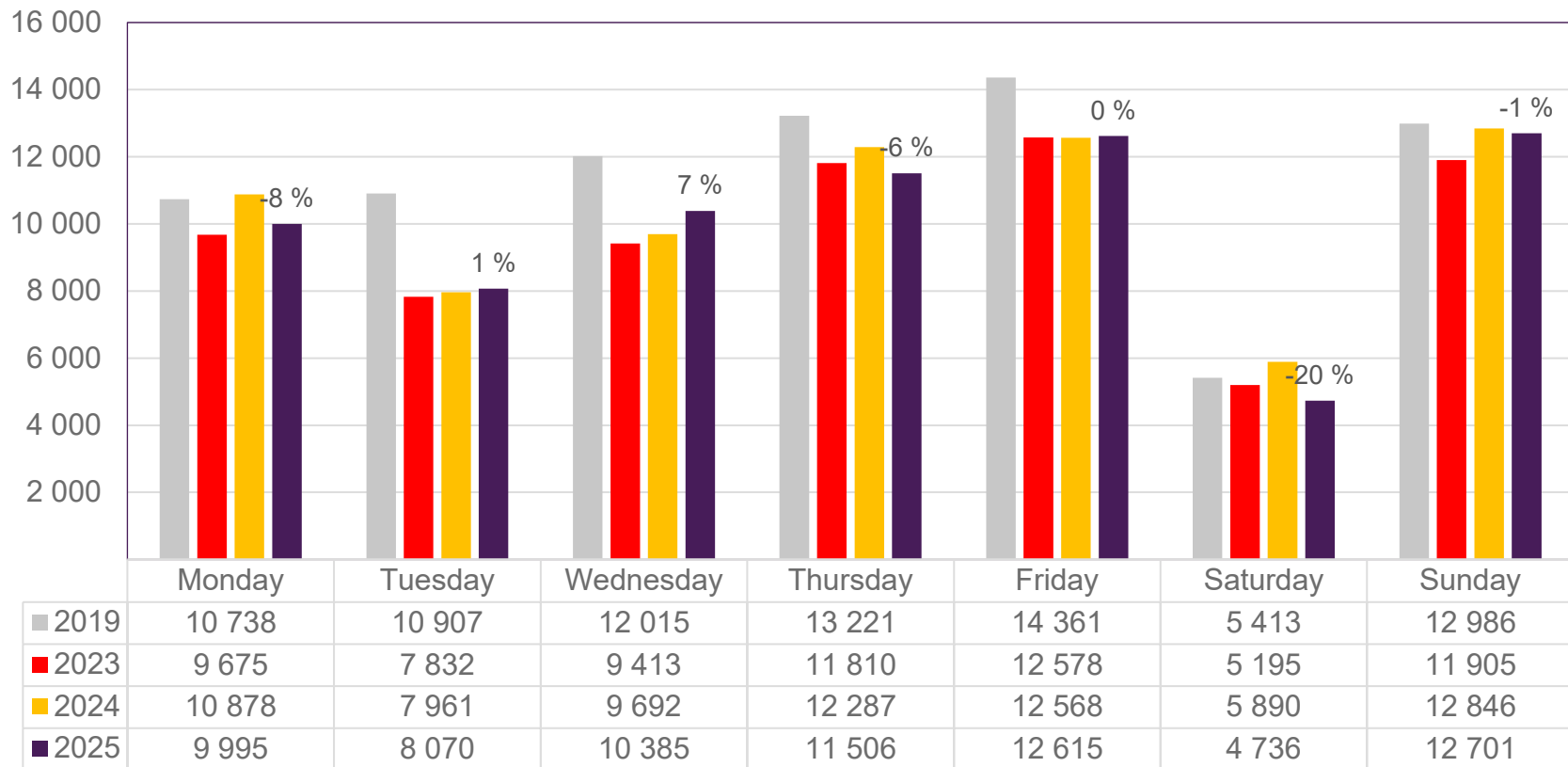


Passengers SVG domestic per week

The change is measured against the same week in 2024



Passengers TRD total per day, week 6

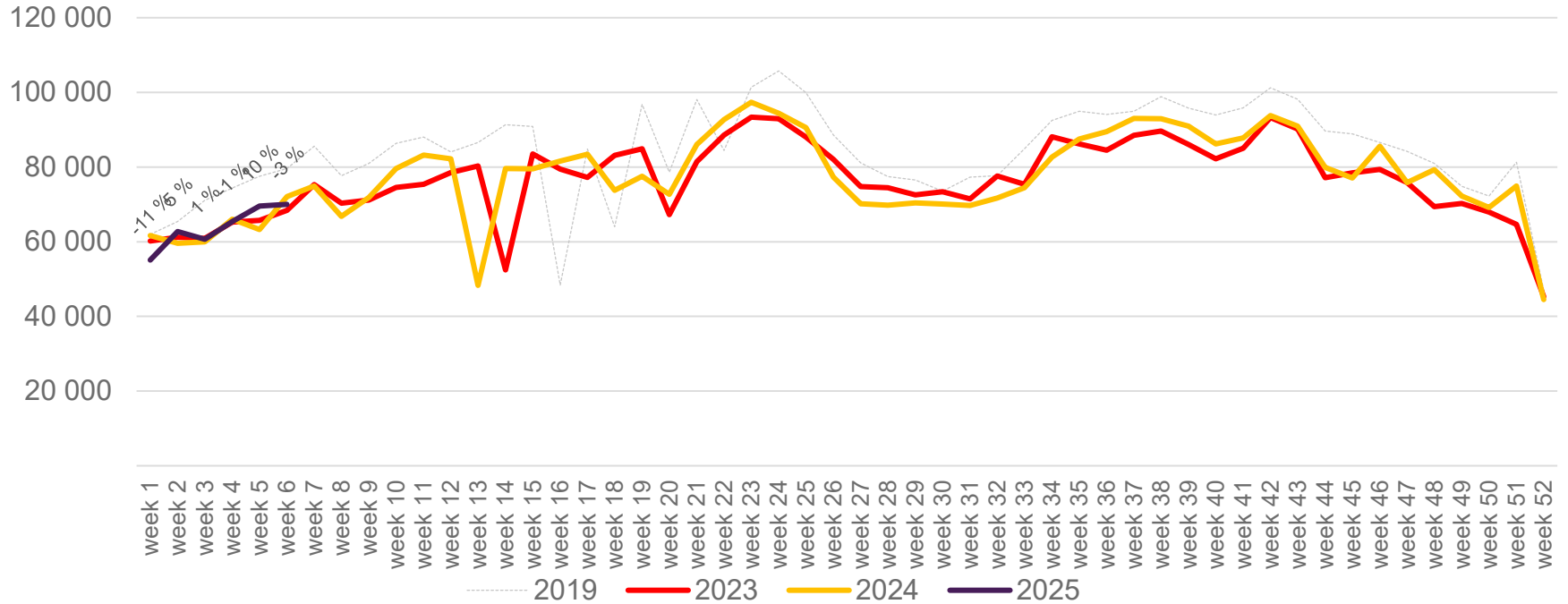


The change is measured against the same week in 2024

Source: SIA, Avinor Statistics

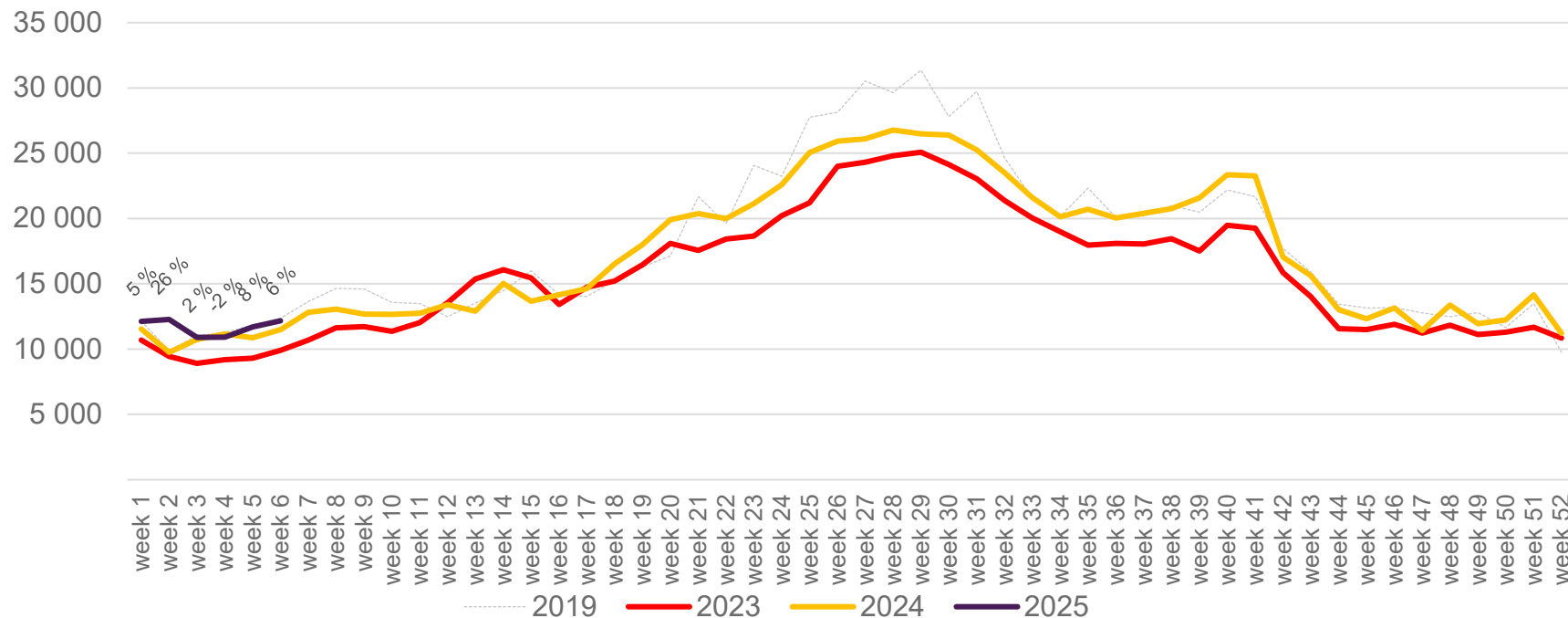
Passengers TRD total per week

The change is measured against the same week in 2024



Passengers TRD international per week

The change is measured against the same week in 2024



Passengers TRD domestic per week

The change is measured against the same week in 2024

