



Passenger numbers per week

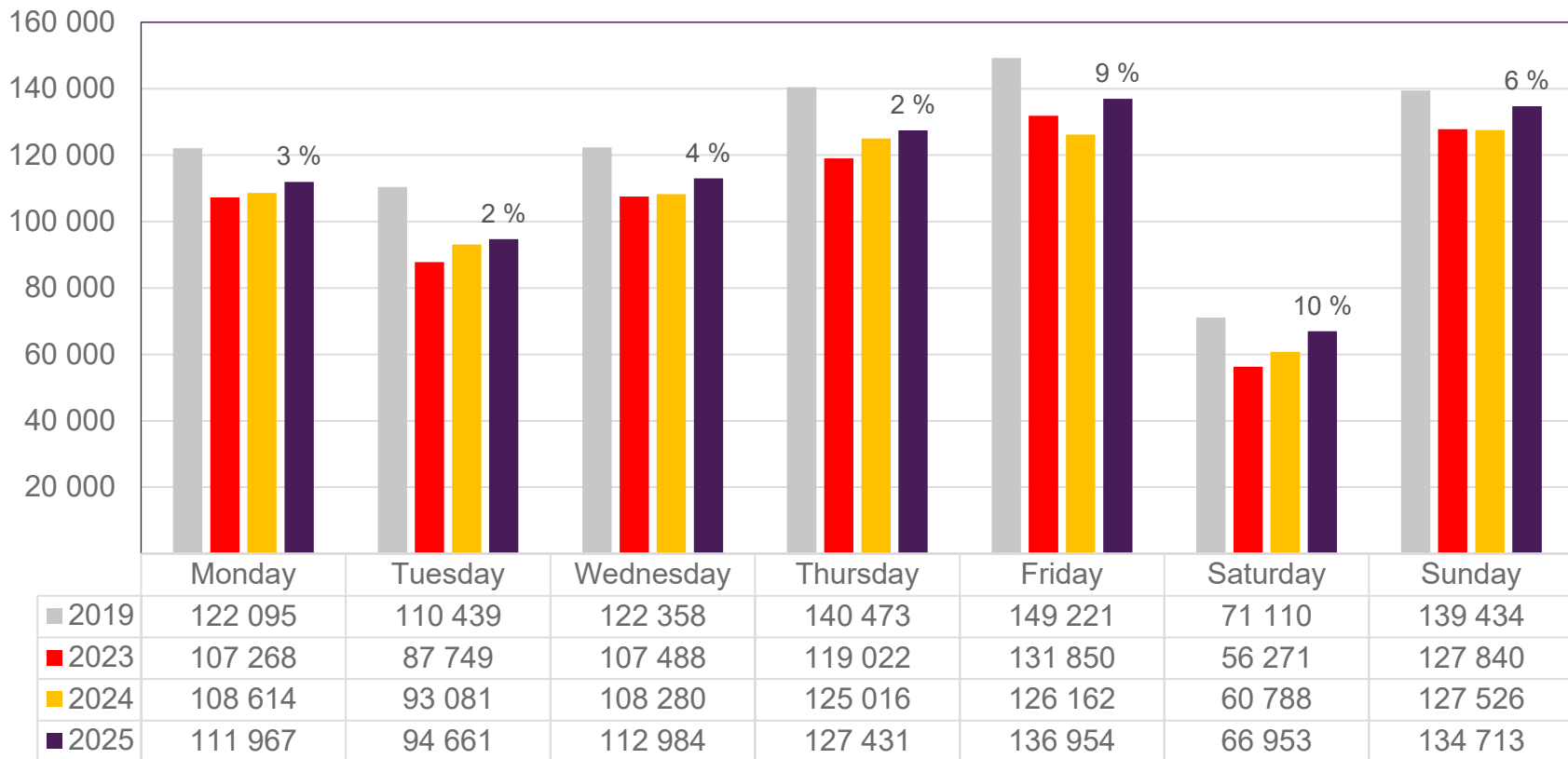
Preliminary figures

- The figures for the previous week are preliminary. It takes some time for all passenger numbers to be reported, so the figures for the previous week may be lower than the final figures.
- The figures are taken from SIA, Avinor's traffic database.

Top 10 airports, total week 4

Airport	2019	2023	2024	2025	2025 vs. 2024	
					Change	Change %
Oslo/Gardermoen	444 565	367 536	366 328	385 413	19 085	5 %
Bergen/Flesland	97 949	94 700	95 905	94 849	-1 056	-1 %
Trondheim/Værnes	74 417	65 258	66 059	65 020	-1 039	-2 %
Stavanger/Sola	67 524	58 435	58 911	60 470	1 559	3 %
Tromsø/Langnes	44 690	40 711	50 249	58 542	8 293	17 %
Bodø	27 166	24 749	25 487	28 434	2 947	12 %
Ålesund/Vigra	18 387	15 436	16 027	14 542	-1 485	-9 %
Kristiansand/Kjevik	17 327	13 099	12 664	12 389	-275	-2 %
Harstad/Narvik/Evenes	10 432	10 482	11 065	11 437	372	3 %
Bardufoss	3 700	3 555	3 545	3 257	-288	-8 %

Passengers Avinor total per day, week 4

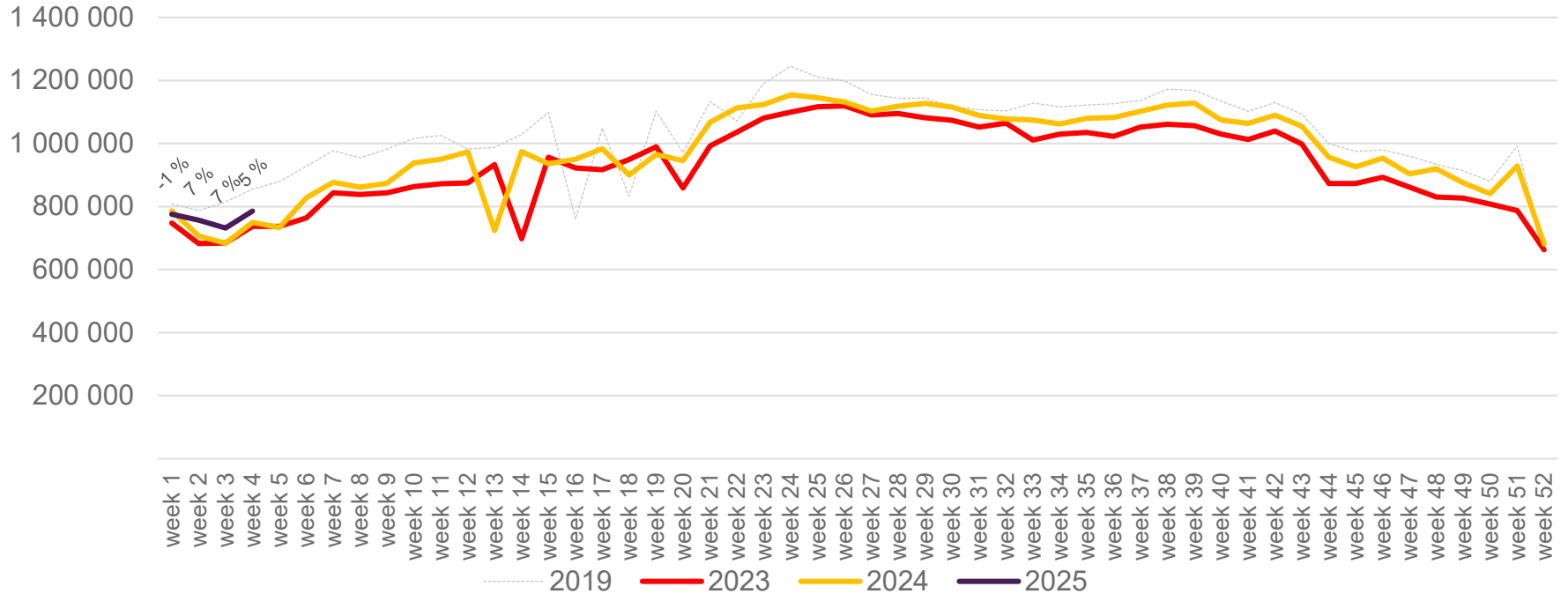


The change is measured against the same week in 2024

Source: SIA, Avinor Statistics

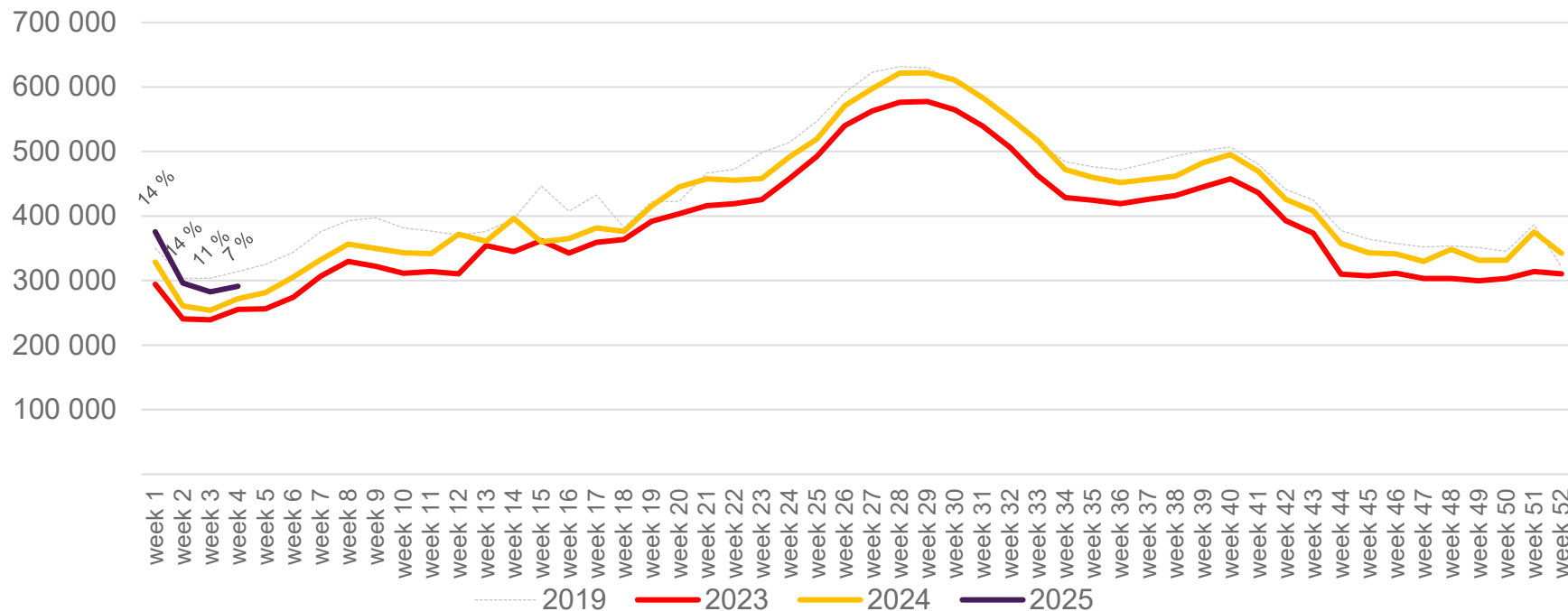
Passengers Avinor total per week

The change is measured against the same week in 2024



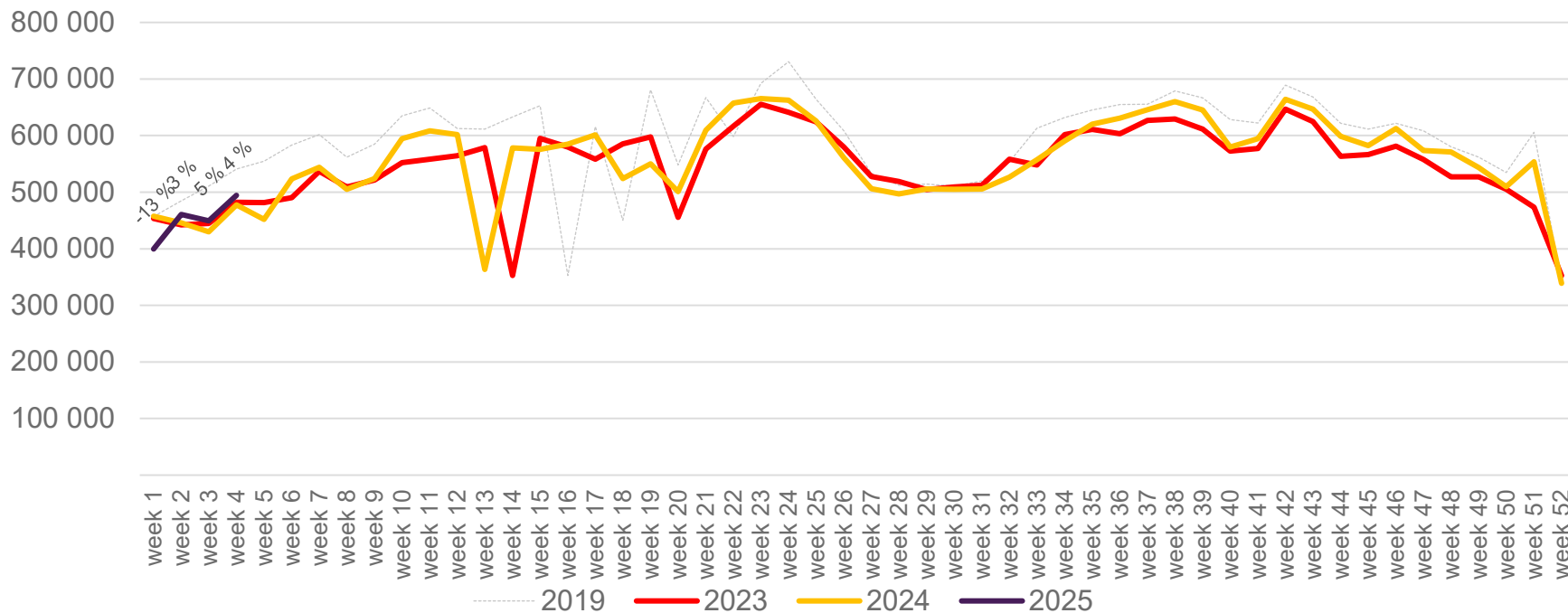
Passengers Avinor international per week

The change is measured against the same week in 2024

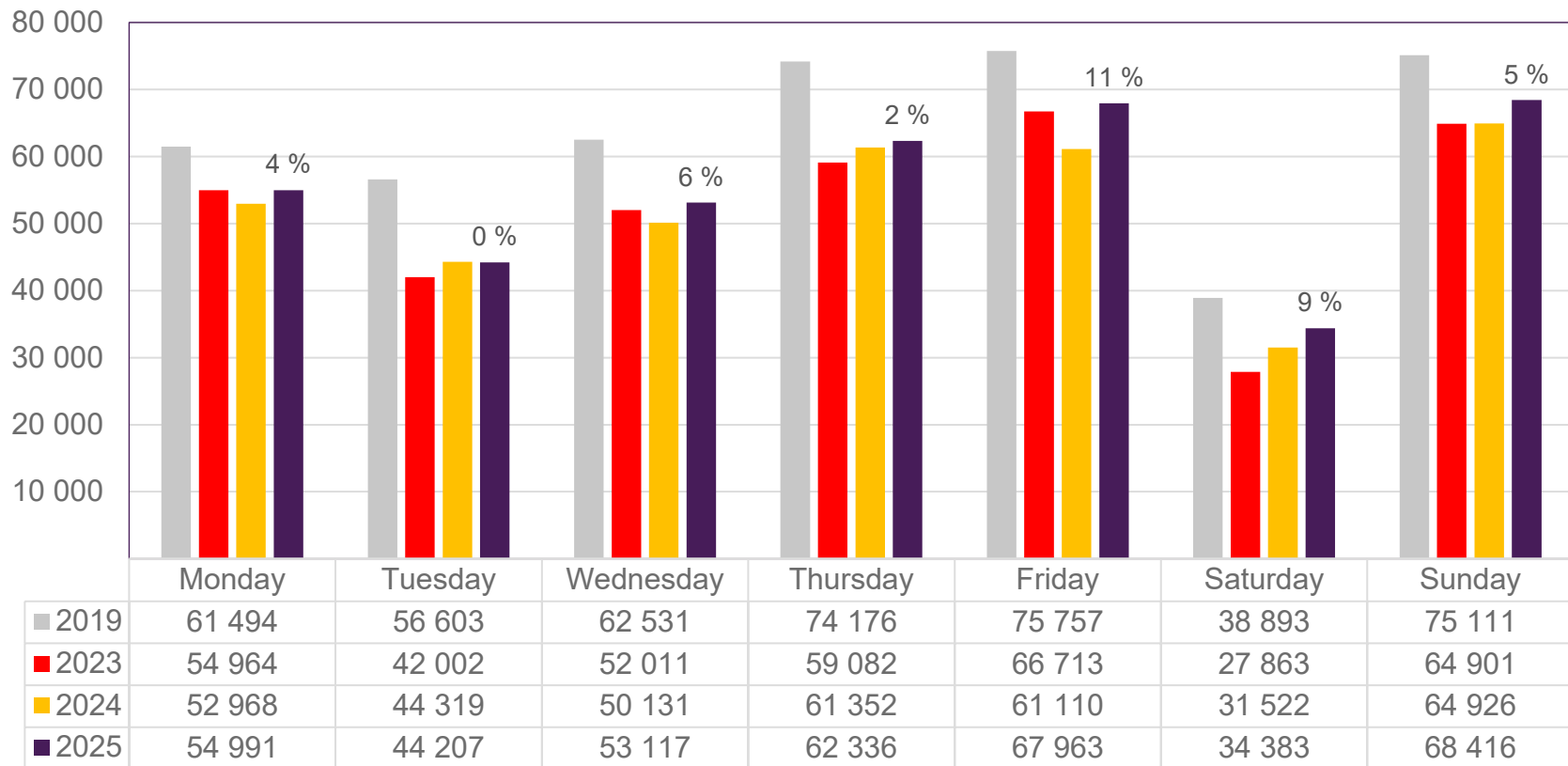


Passengers Avinor domestic per week

The change is measured against the same week in 2024



Passengers OSL total per day, week 4

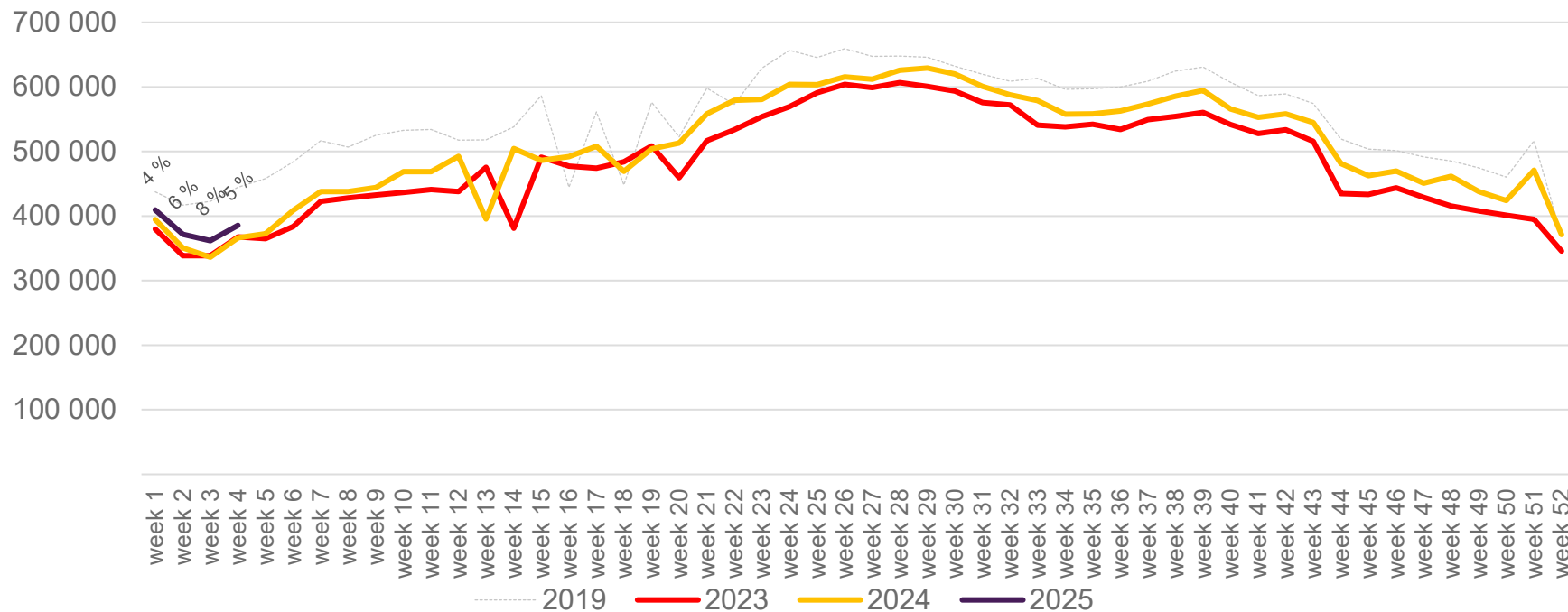


The change is measured against the same week in 2024

Source: SIA, Avinor Statistics

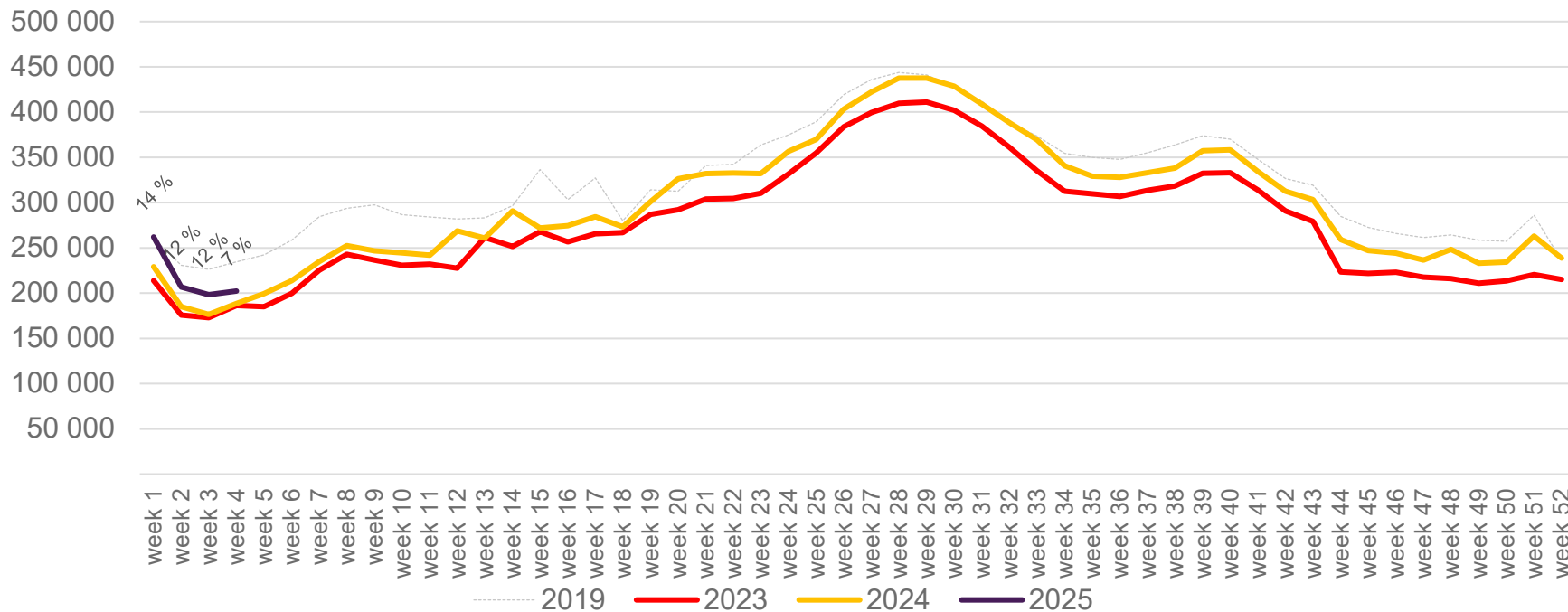
Passengers OSL total per week

The change is measured against the same week in 2024



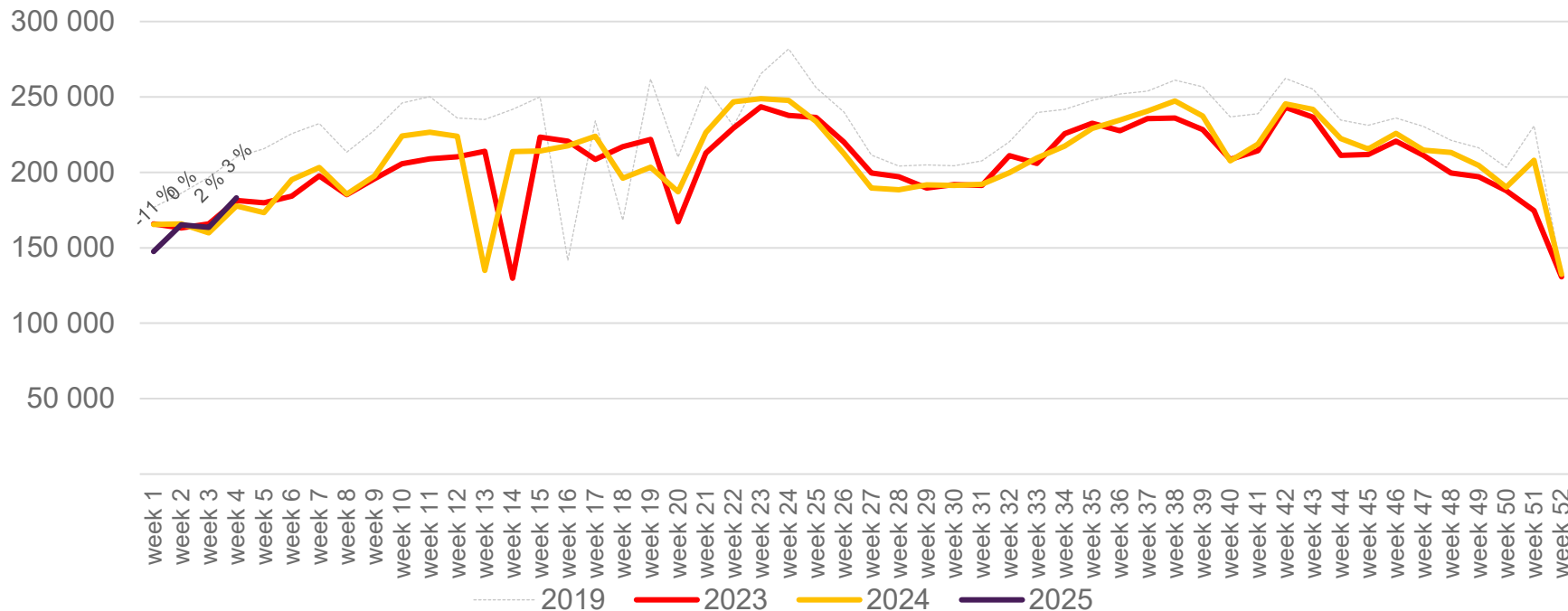
Passengers OSL international per week

The change is measured against the same week in 2024

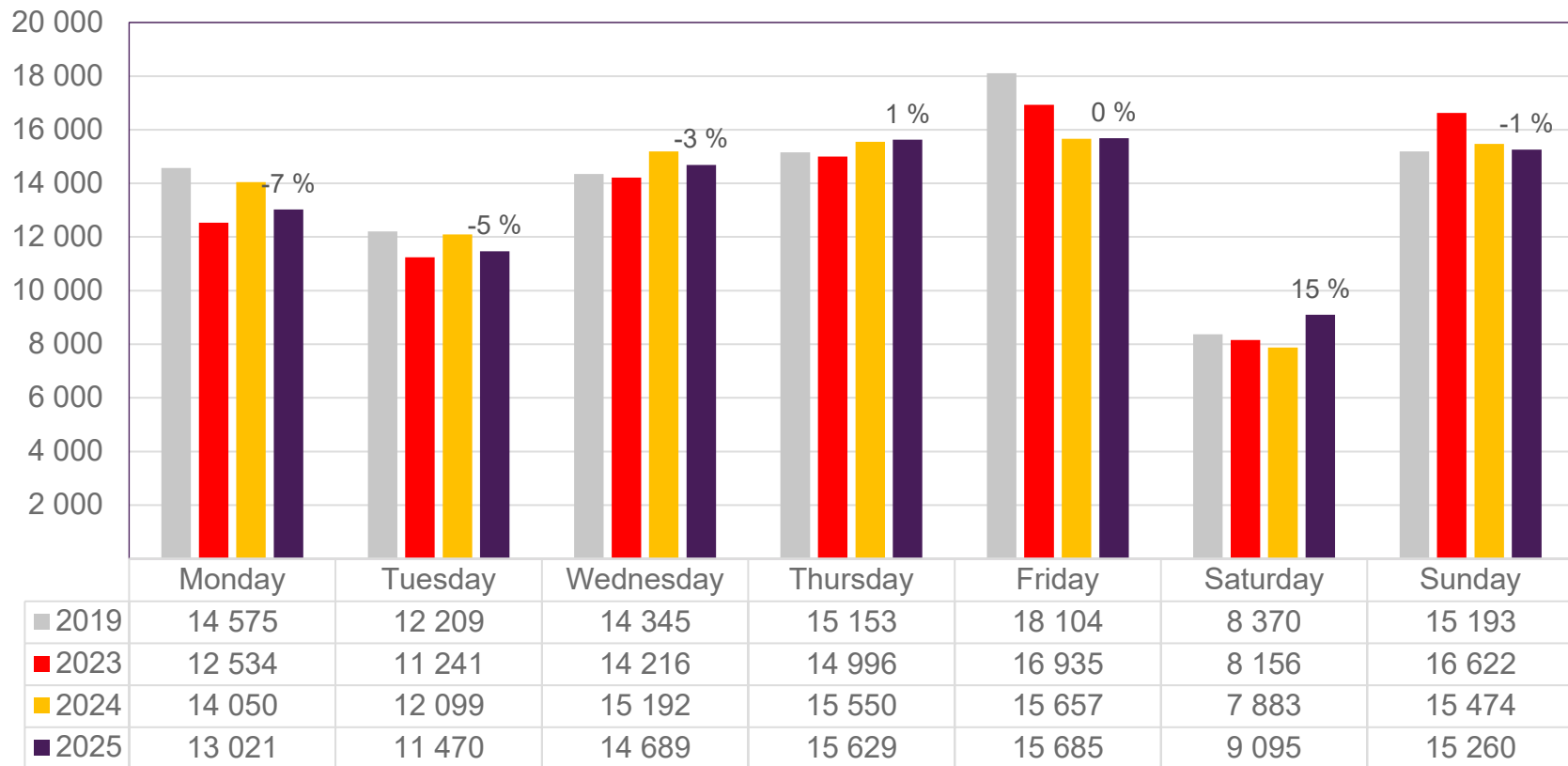


Passengers OSL domestic per week

The change is measured against the same week in 2024



Passengers BGO total per day, week 4

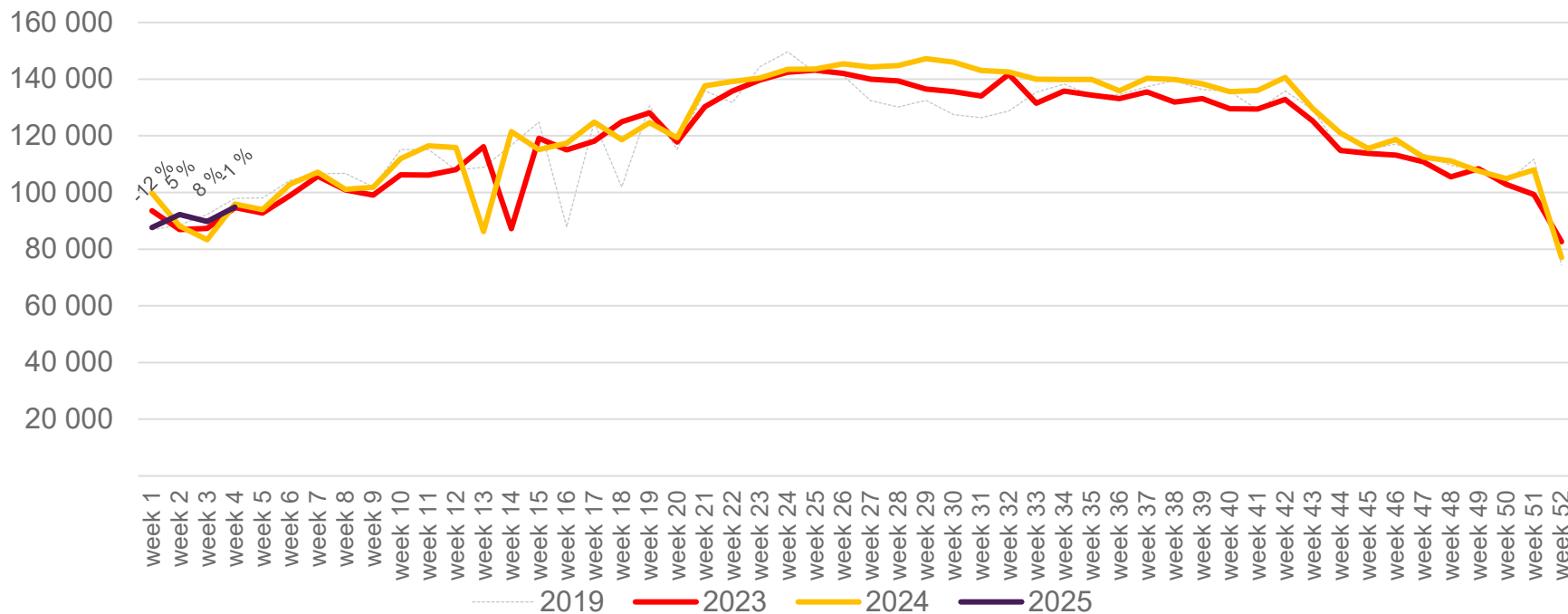


The change is measured against the same week in 2024

Source: SIA, Avinor Statistics

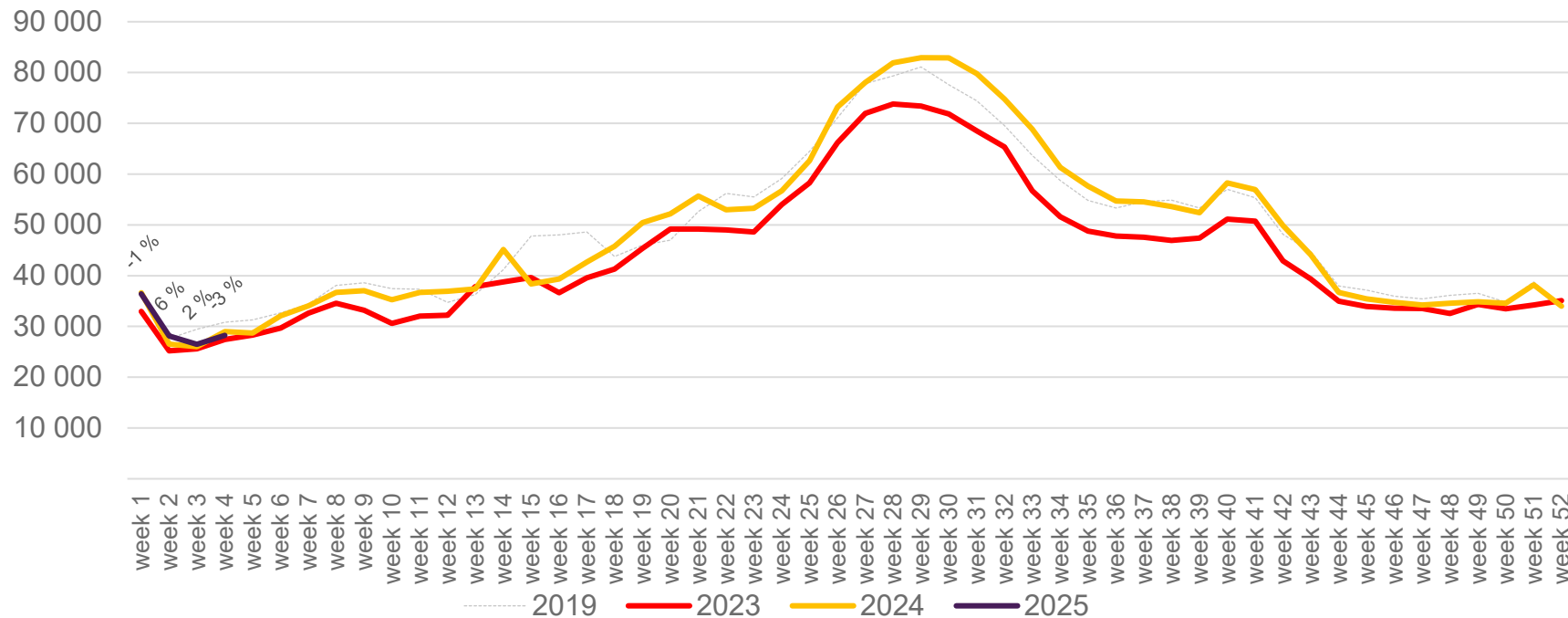
Passengers BGO total per week

The change is measured against the same week in 2024



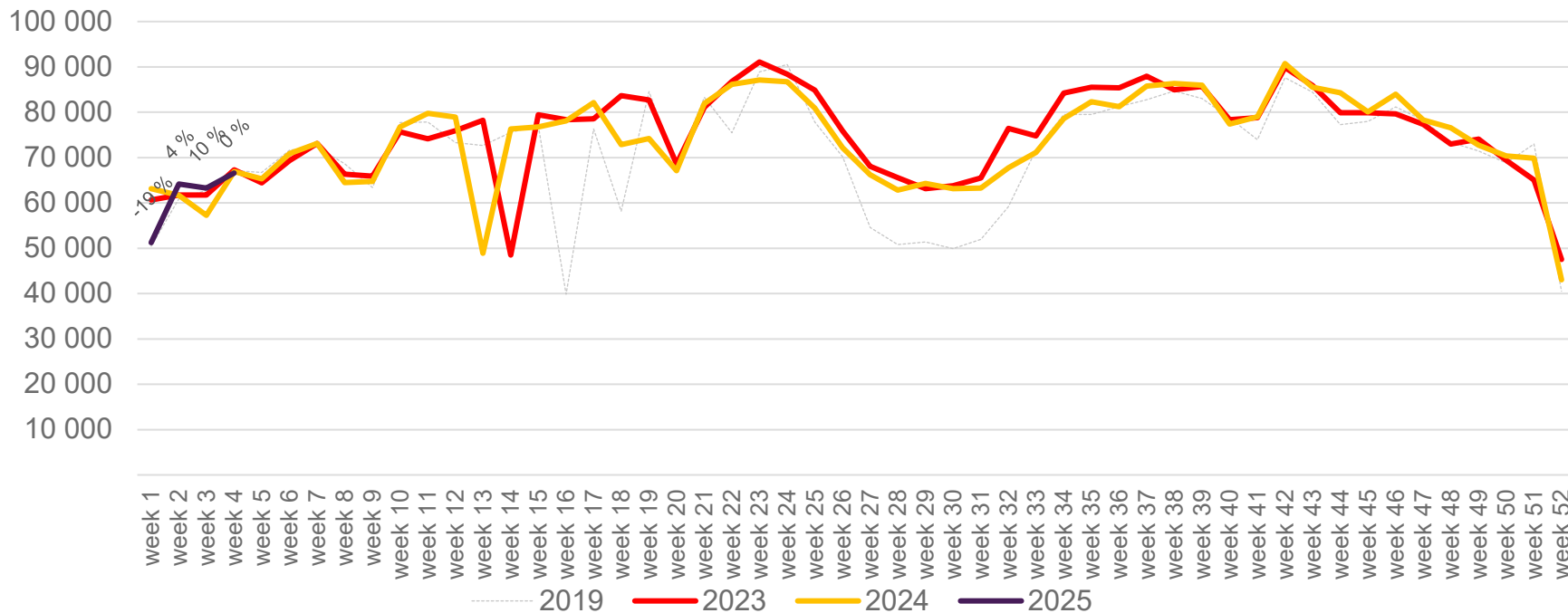
Passengers BGO international per week

The change is measured against the same week in 2024

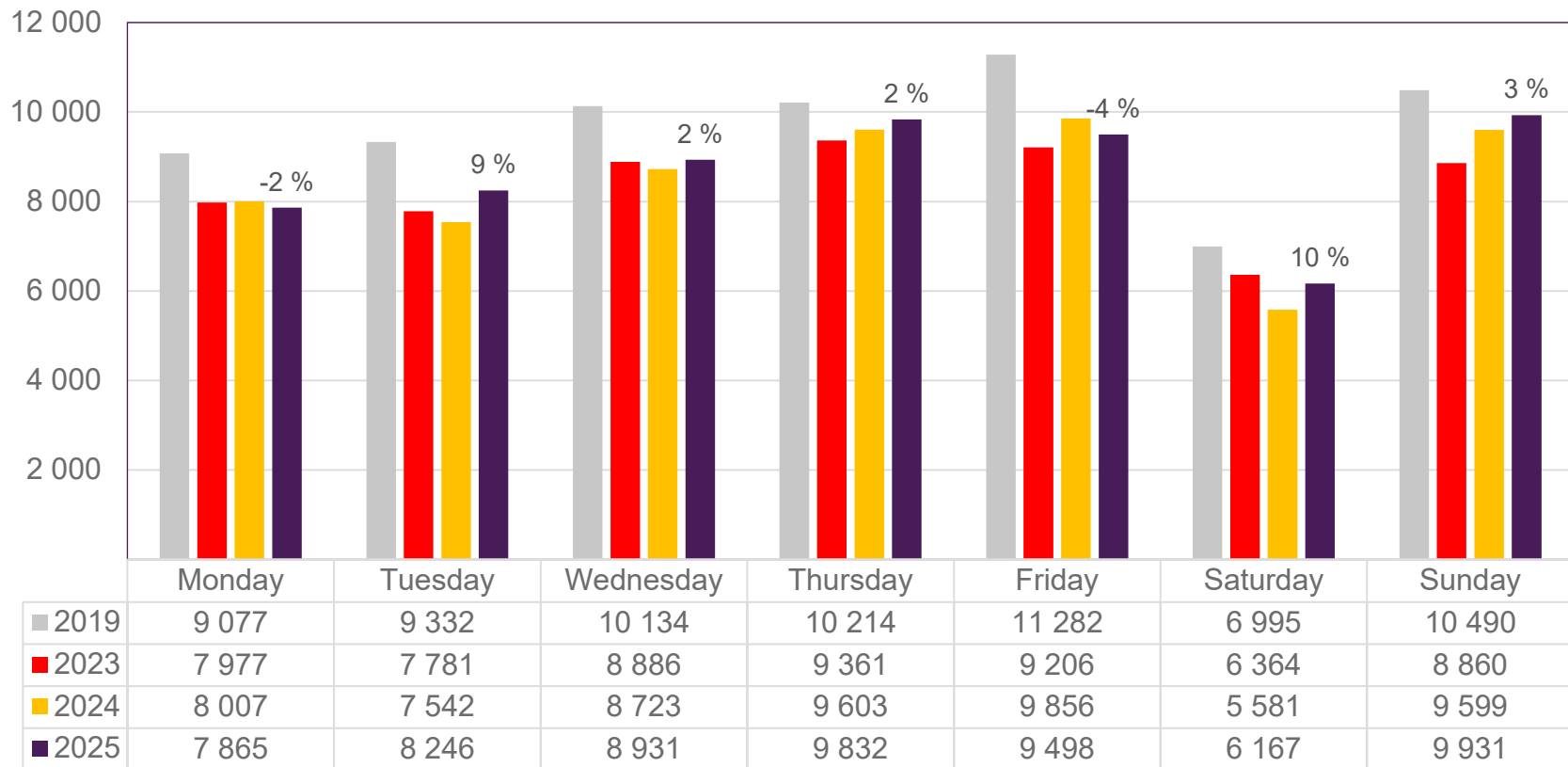


Passengers BGO domestic per week

The change is measured against the same week in 2024



Passengers SVG total per day, week 4

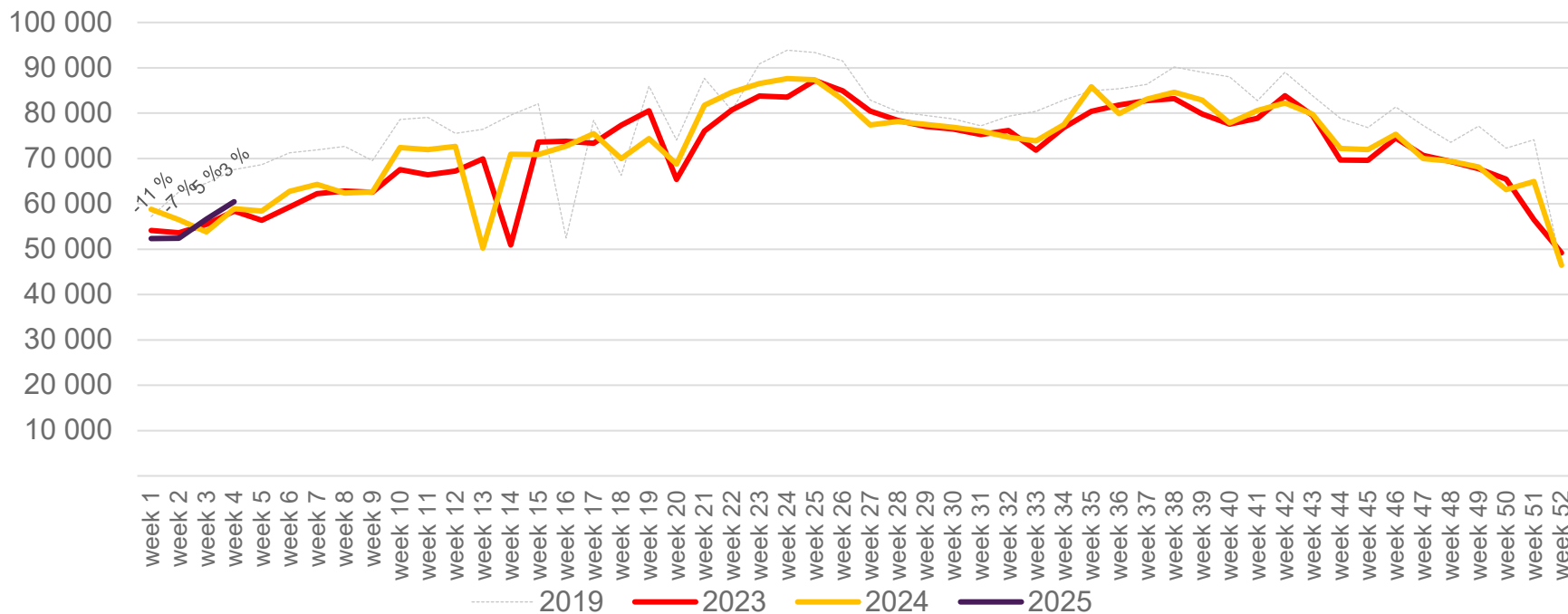


The change is measured against the same week in 2024

Source: SIA, Avinor Statistics

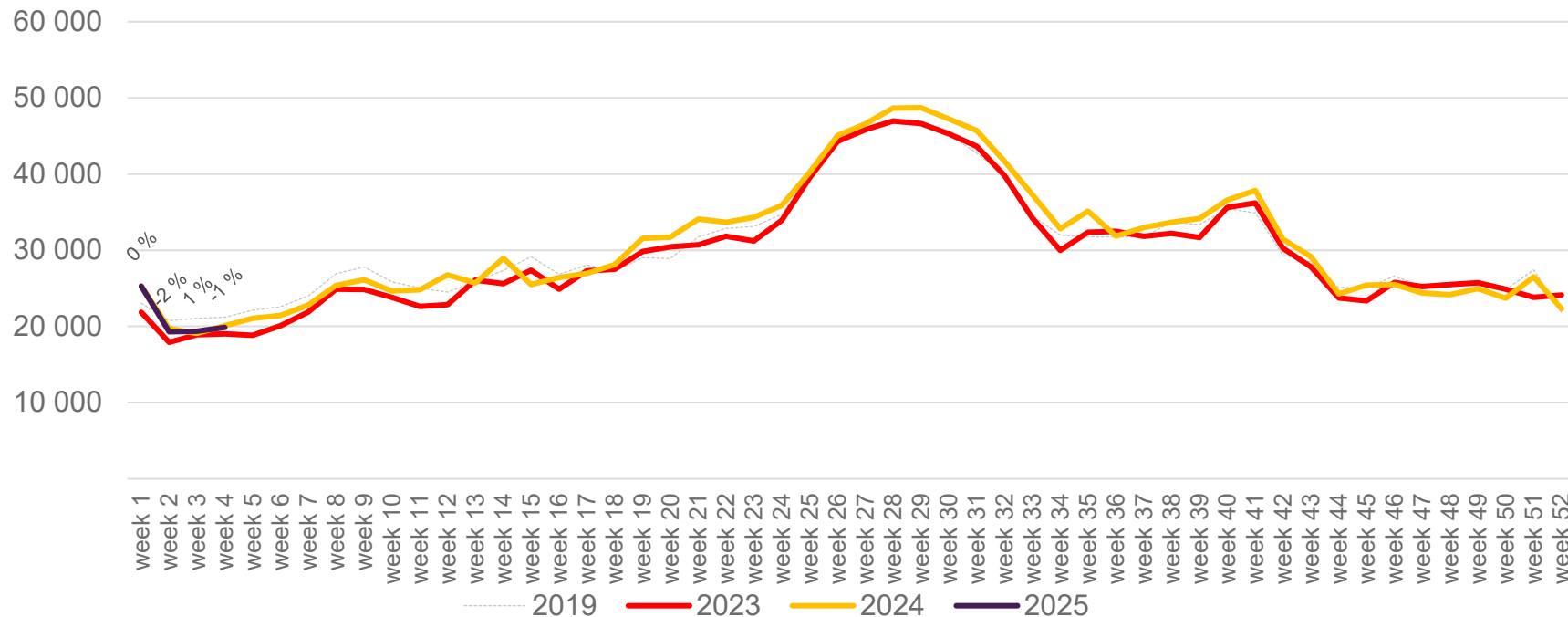
Passengers SVG total per week

The change is measured against the same week in 2024



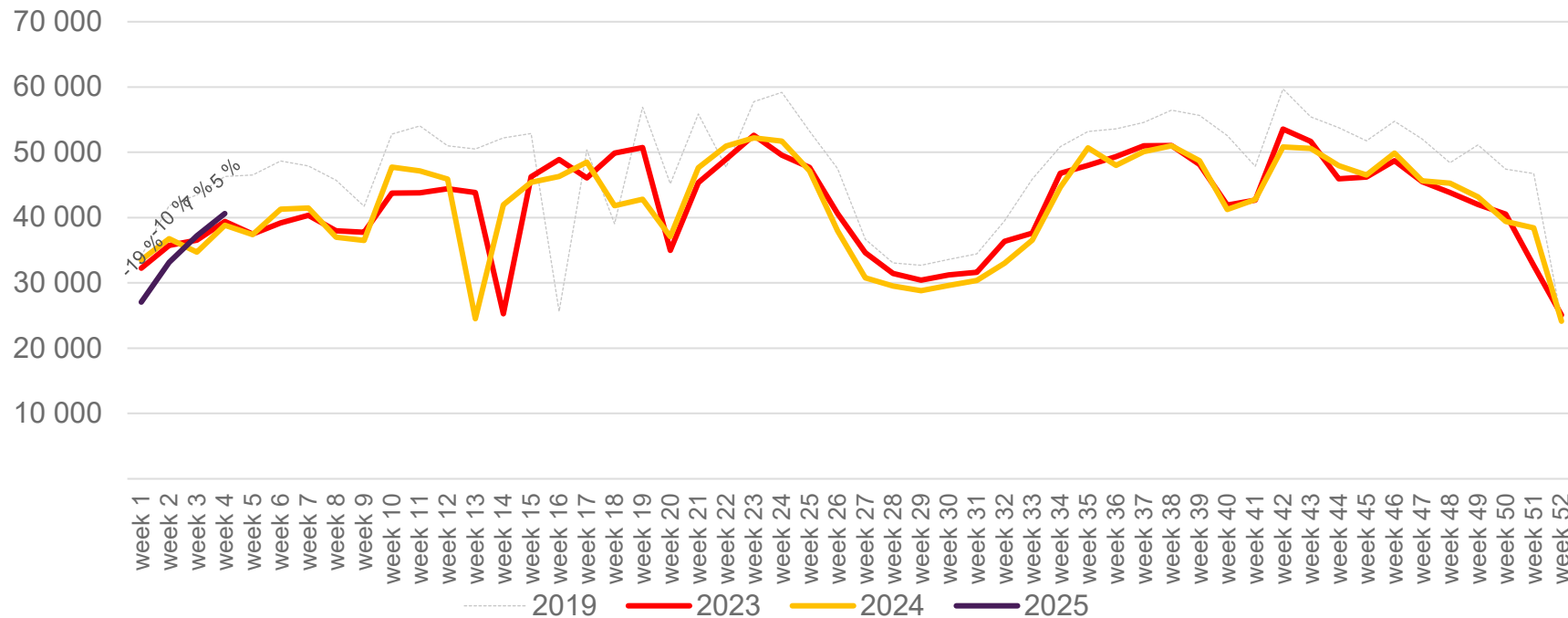
Passengers SVG international per week

The change is measured against the same week in 2024

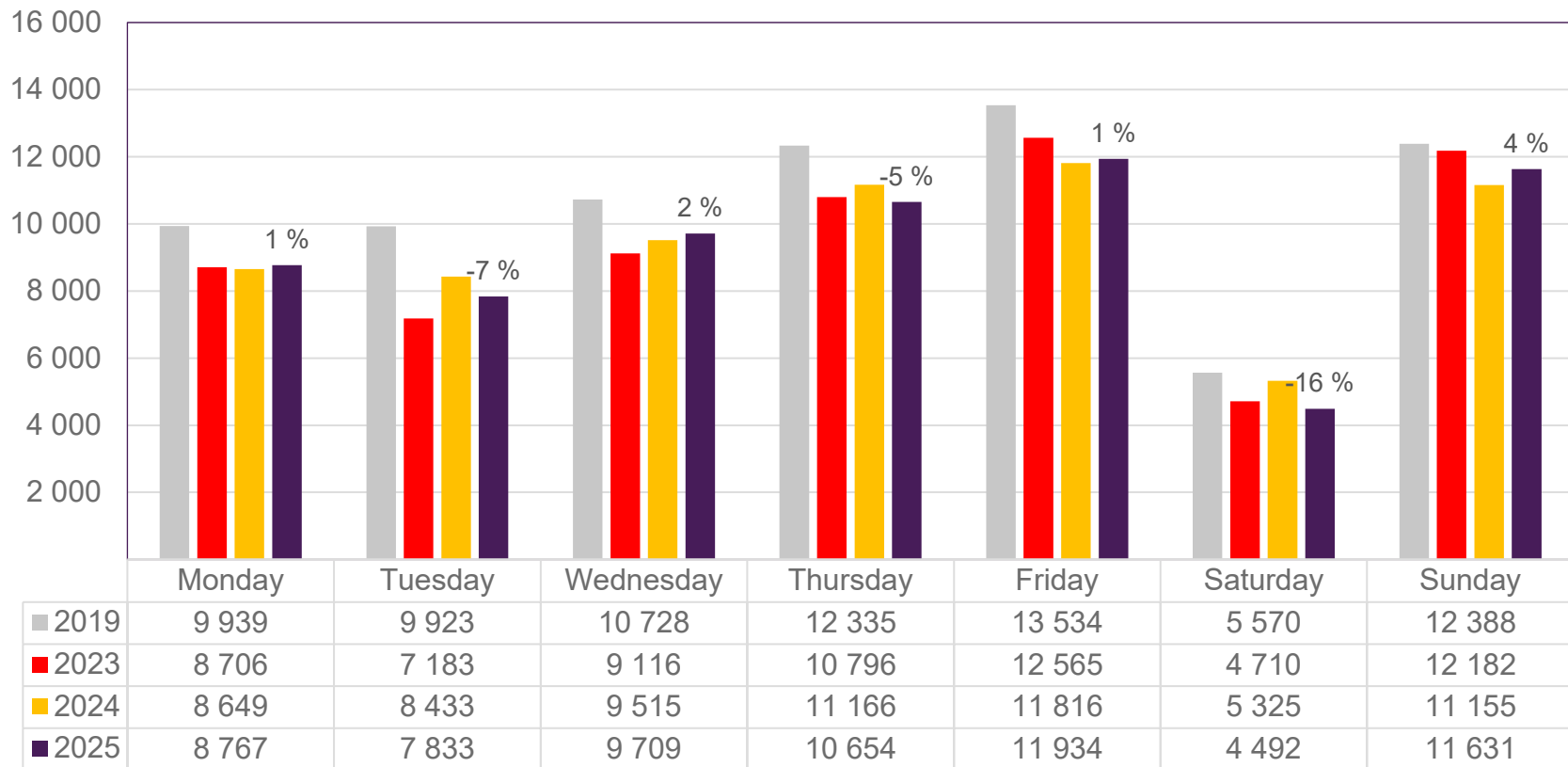


Passengers SVG domestic per week

The change is measured against the same week in 2024



Passengers TRD total per day, week 4

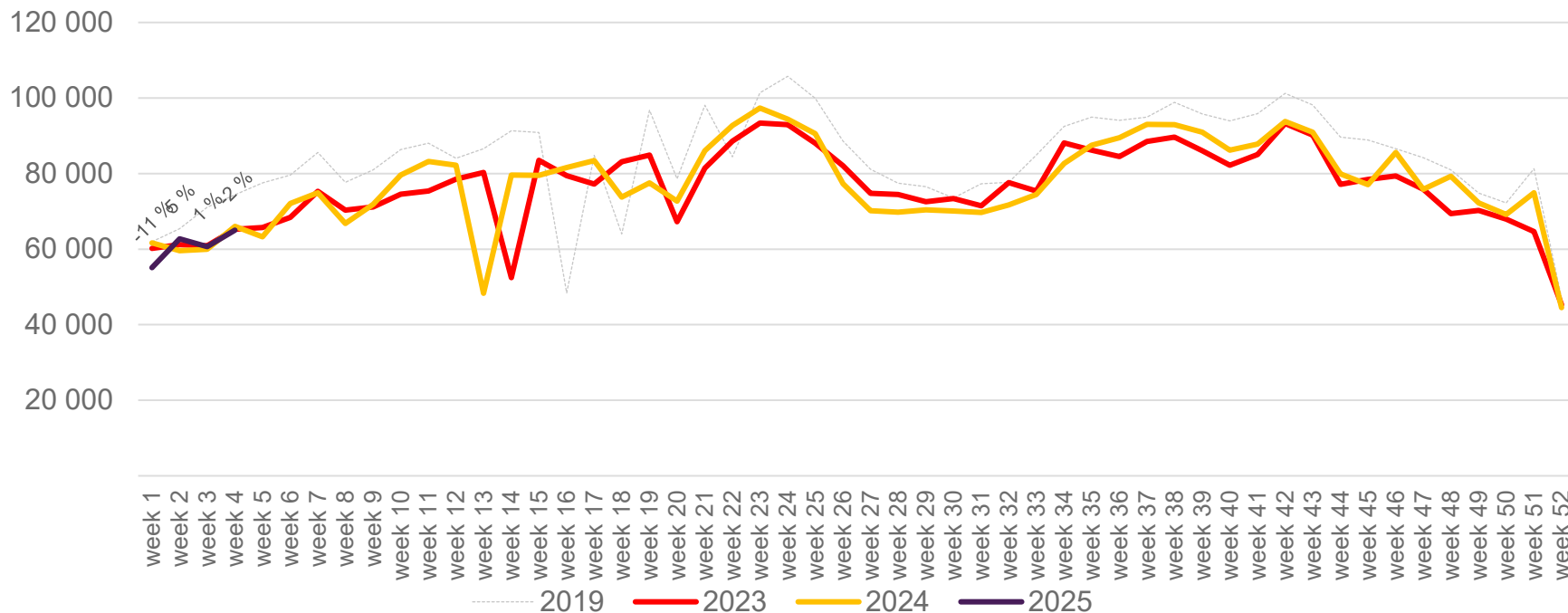


The change is measured against the same week in 2024

Source: SIA, Avinor Statistics

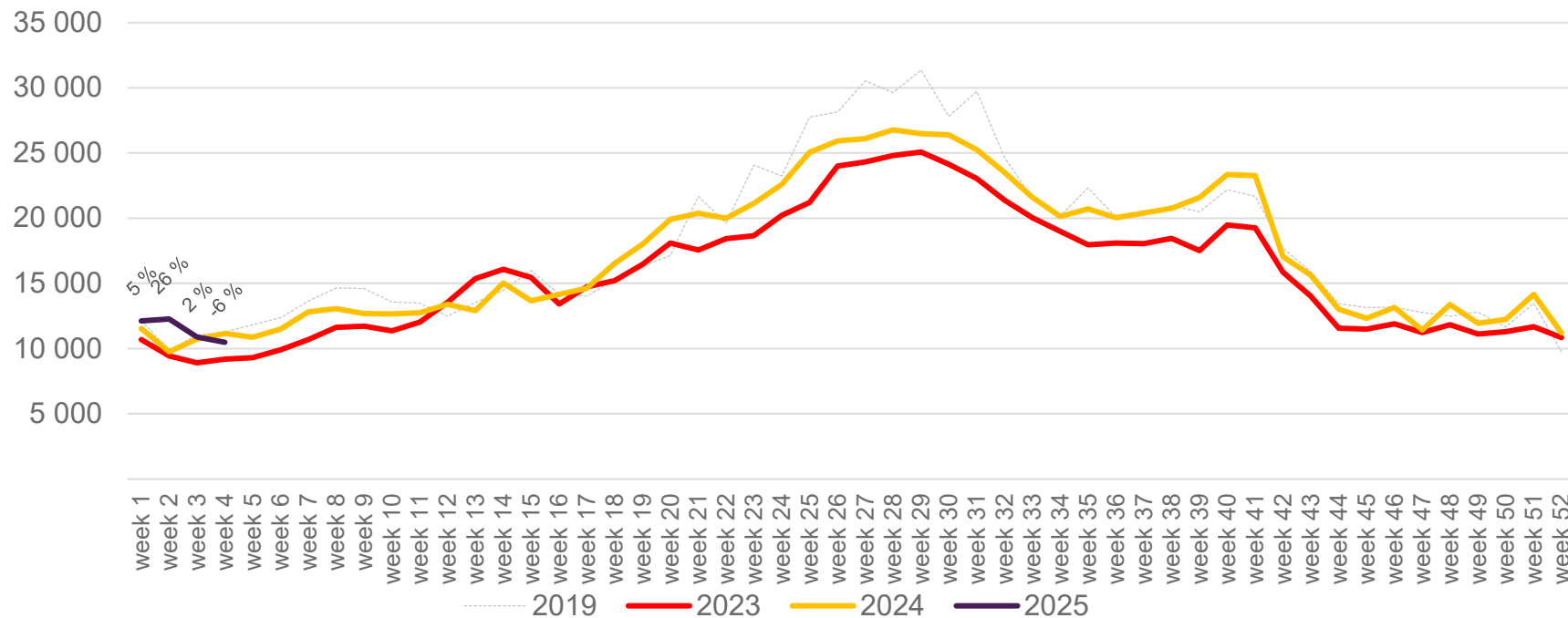
Passengers TRD total per week

The change is measured against the same week in 2024



Passengers TRD international per week

The change is measured against the same week in 2024



Passengers TRD domestic per week

The change is measured against the same week in 2024

