



Passenger numbers per week

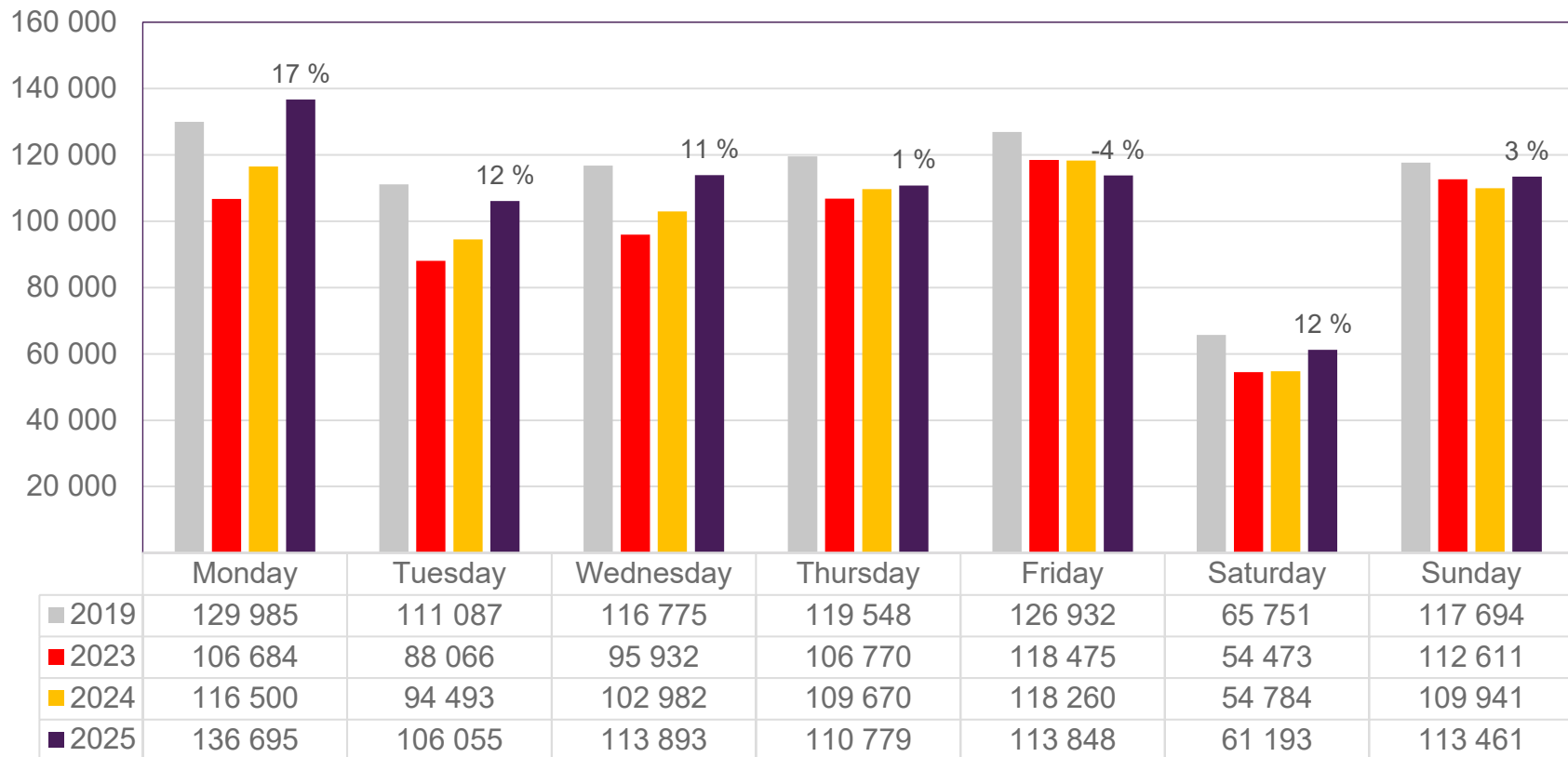
## Preliminary figures

- The figures for the previous week are preliminary. It takes some time for all passenger numbers to be reported, so the figures for the previous week may be lower than the final figures.
- The figures are taken from SIA, Avinor's traffic database.

# Top 10 airports, total week 2

| Airport               | 2019    | 2023    | 2024    | 2025    | 2025 vs. 2024 |          |
|-----------------------|---------|---------|---------|---------|---------------|----------|
|                       |         |         |         |         | Change        | Change % |
| Oslo/Gardermoen       | 416 828 | 338 747 | 350 789 | 371 215 | 20 426        | 6 %      |
| Bergen/Flesland       | 88 501  | 86 900  | 88 157  | 92 280  | 4 123         | 5 %      |
| Trondheim/Værnes      | 65 386  | 61 220  | 59 610  | 62 748  | 3 138         | 5 %      |
| Tromsø/Langnes        | 40 069  | 39 434  | 46 370  | 58 469  | 12 099        | 26 %     |
| Stavanger/Sola        | 62 604  | 53 636  | 56 469  | 52 419  | -4 050        | -7 %     |
| Bodø                  | 23 219  | 22 966  | 23 677  | 26 840  | 3 163         | 13 %     |
| Ålesund/Vigra         | 16 411  | 13 752  | 13 782  | 14 130  | 348           | 3 %      |
| Harstad/Narvik/Evenes | 10 109  | 9 839   | 10 696  | 11 606  | 910           | 9 %      |
| Kristiansand/Kjevik   | 16 821  | 11 868  | 12 023  | 11 342  | -681          | -6 %     |
| Bardufoss             | 3 538   | 3 631   | 4 260   | 4 037   | -223          | -5 %     |

# Passengers Avinor total per day, week 2

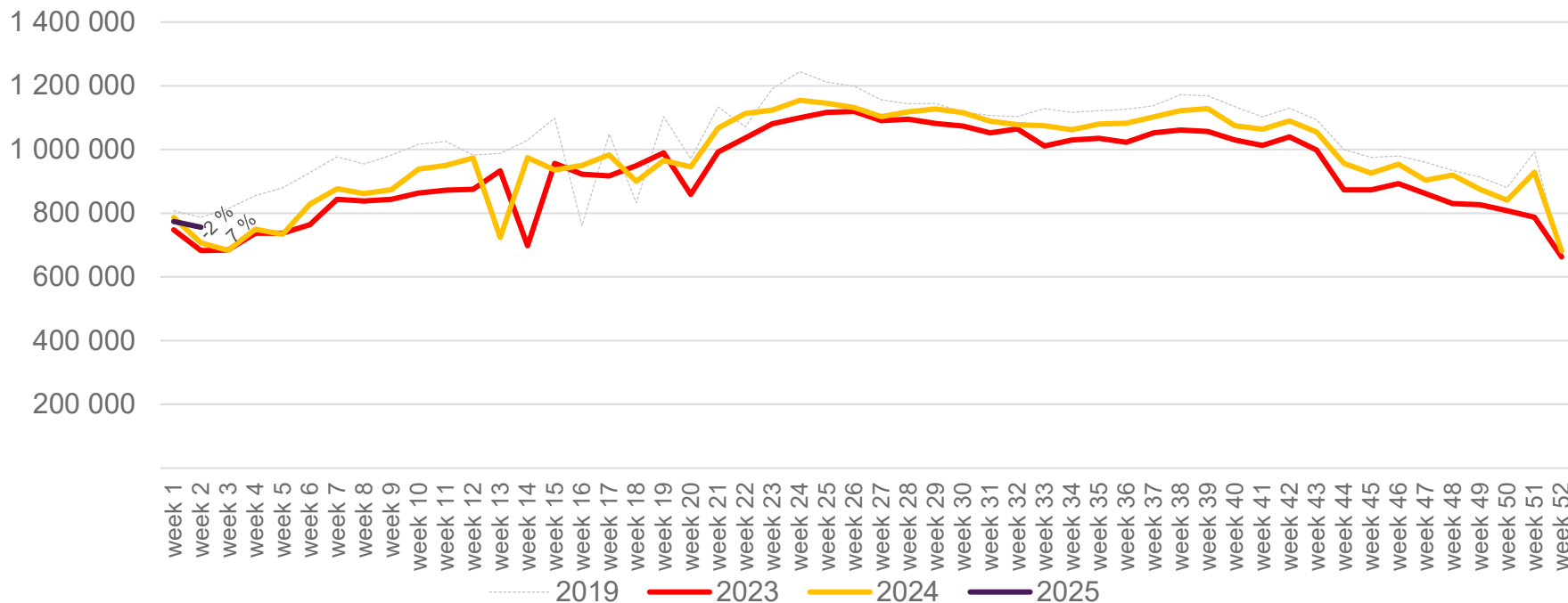


The change is measured against the same week in 2024

Source: SIA, Avinor Statistics

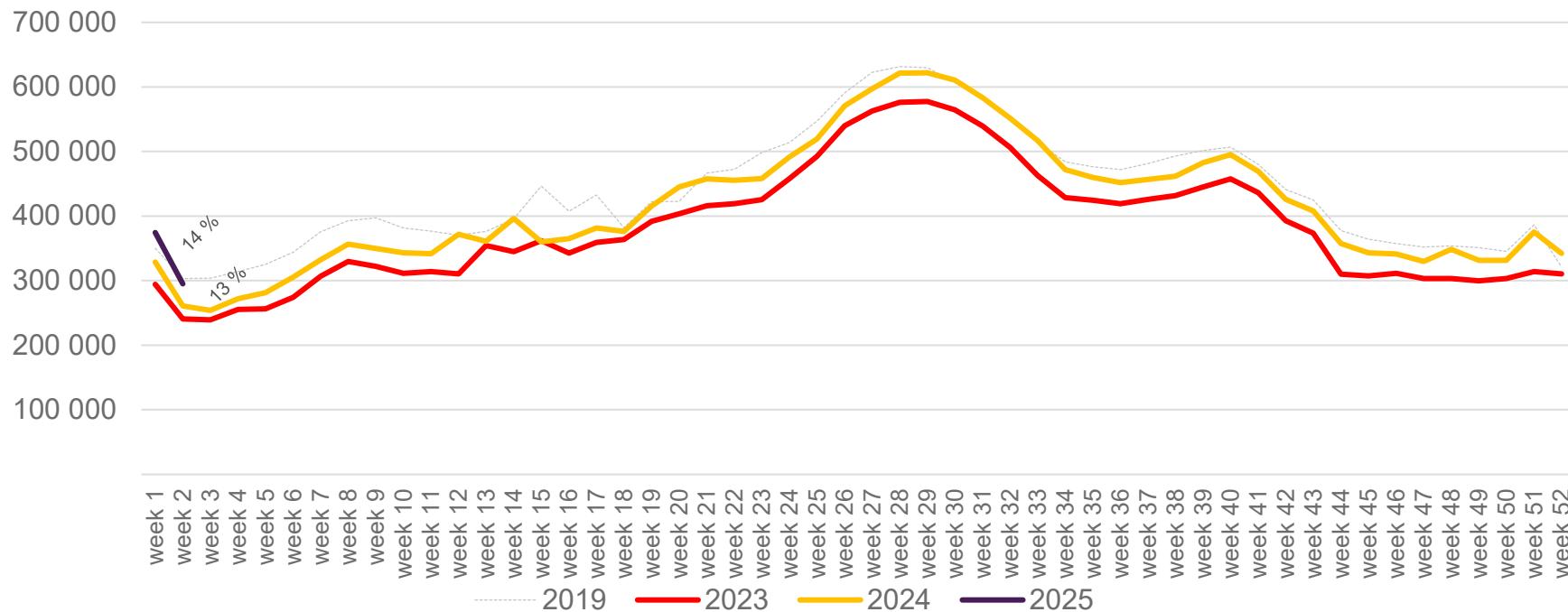
# Passengers Avinor total per week

The change is measured against the same week in 2024



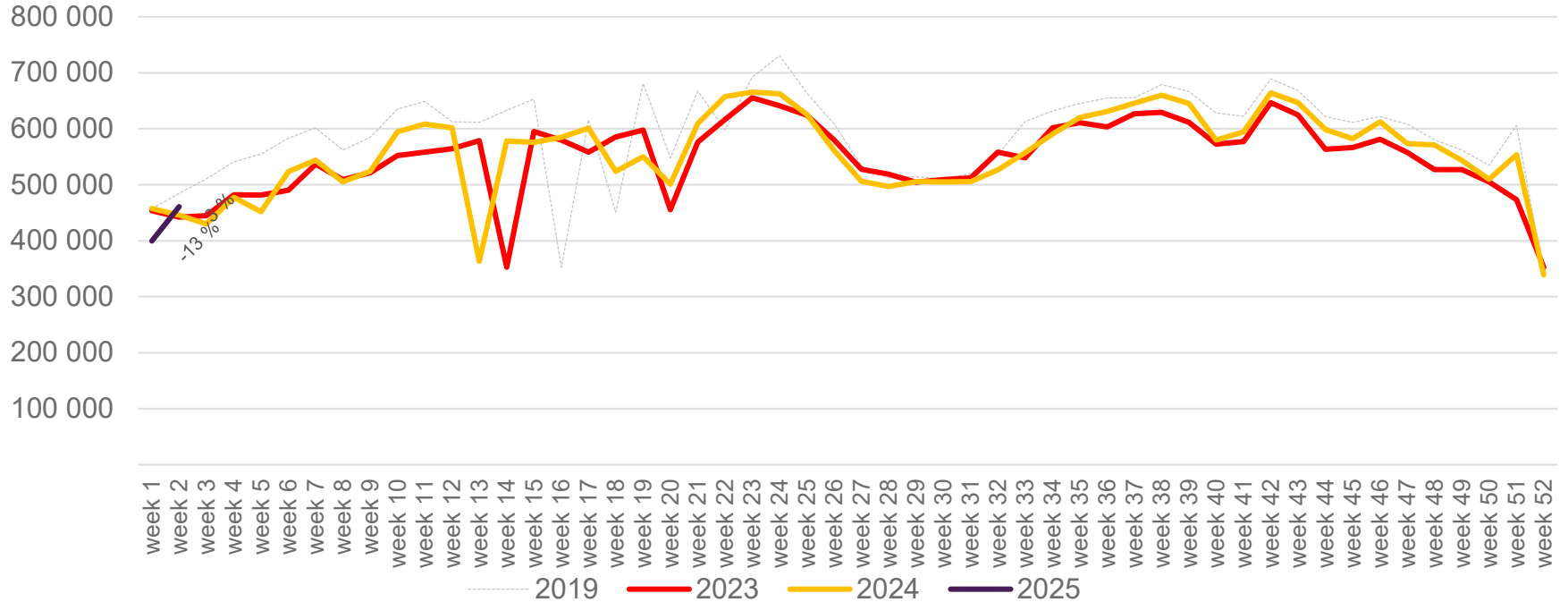
# Passengers Avinor international per week

The change is measured against the same week in 2024

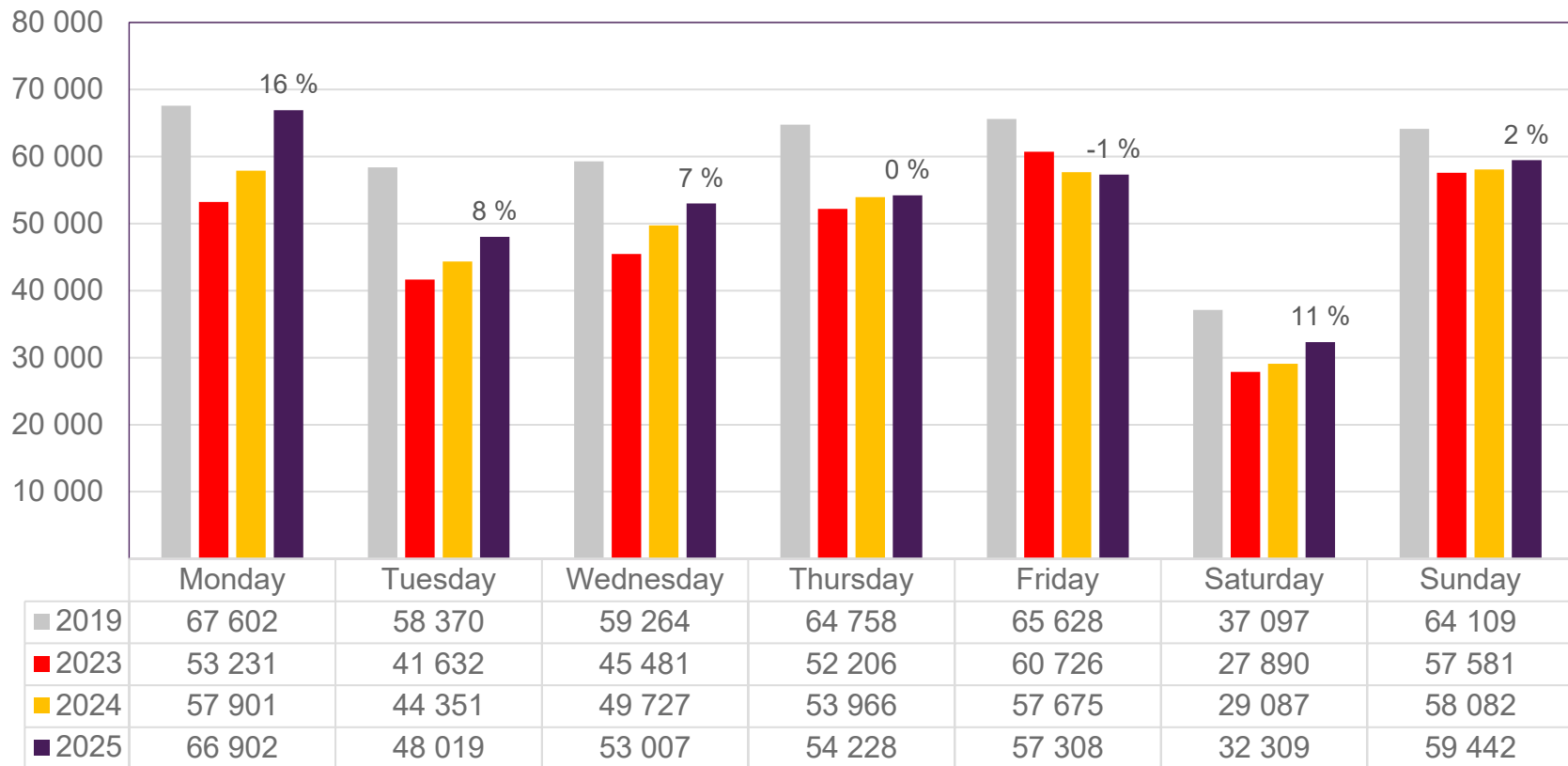


# Passengers Avinor domestic per week

The change is measured against the same week in 2024



# Passengers OSL total per day, week 2

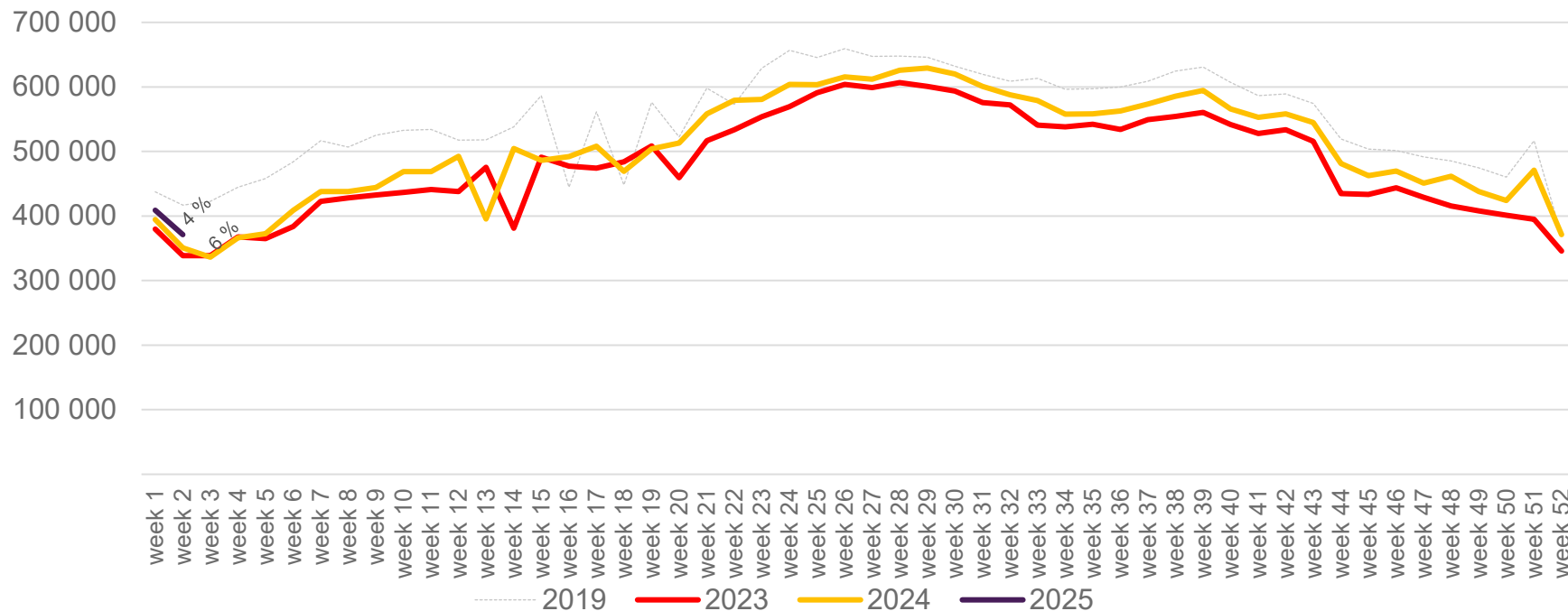


The change is measured against the same week in 2024

Source: SIA, Avinor Statistics

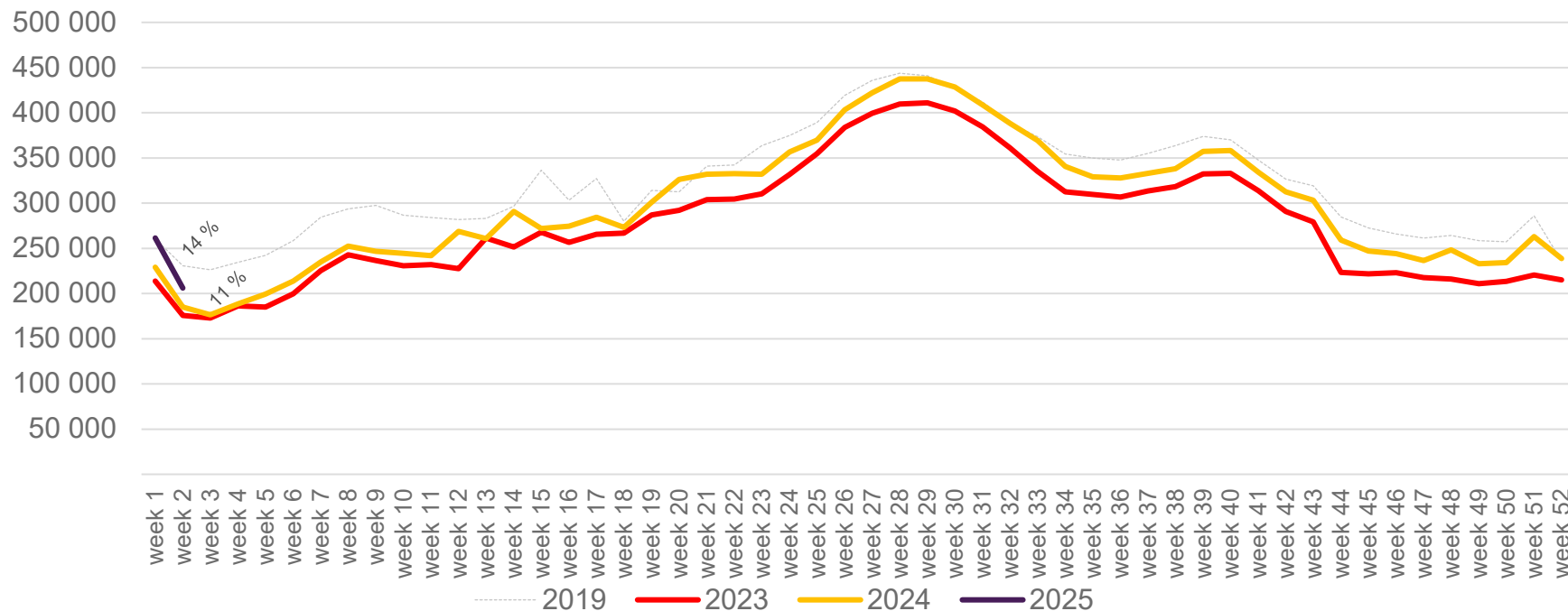
# Passengers OSL total per week

The change is measured against the same week in 2024



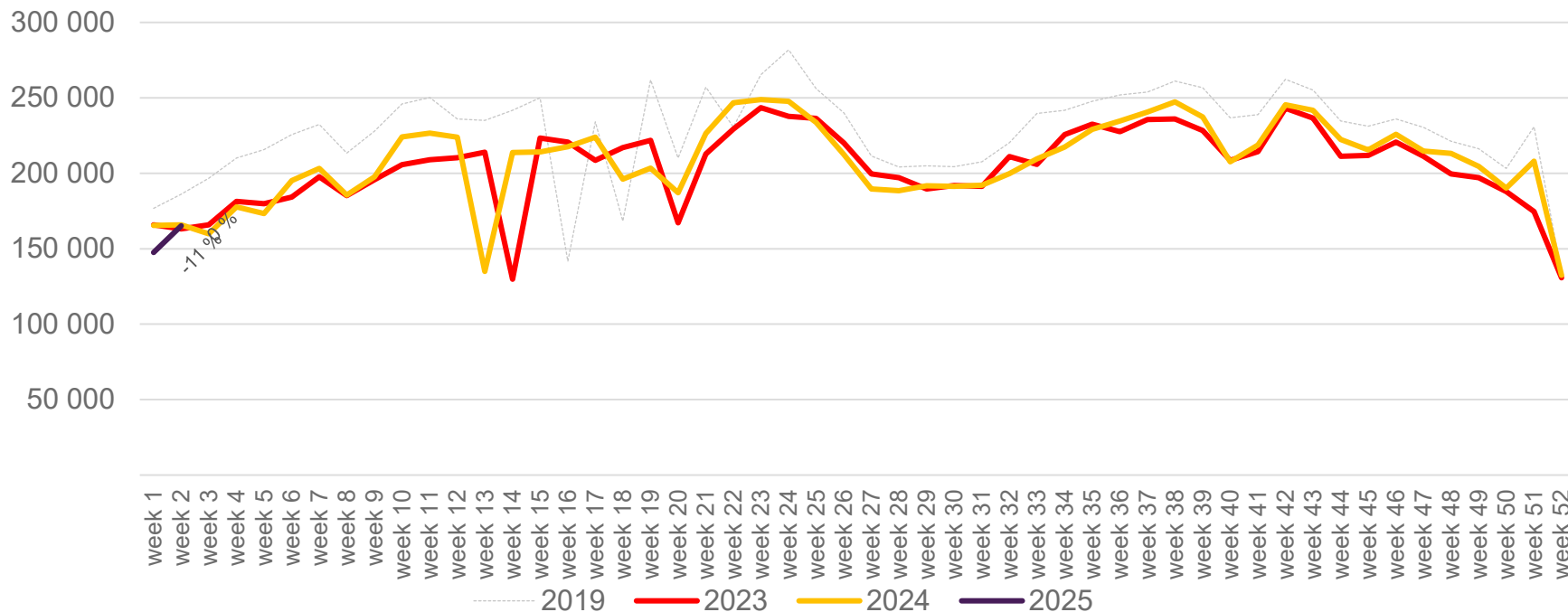
# Passengers OSL international per week

The change is measured against the same week in 2024

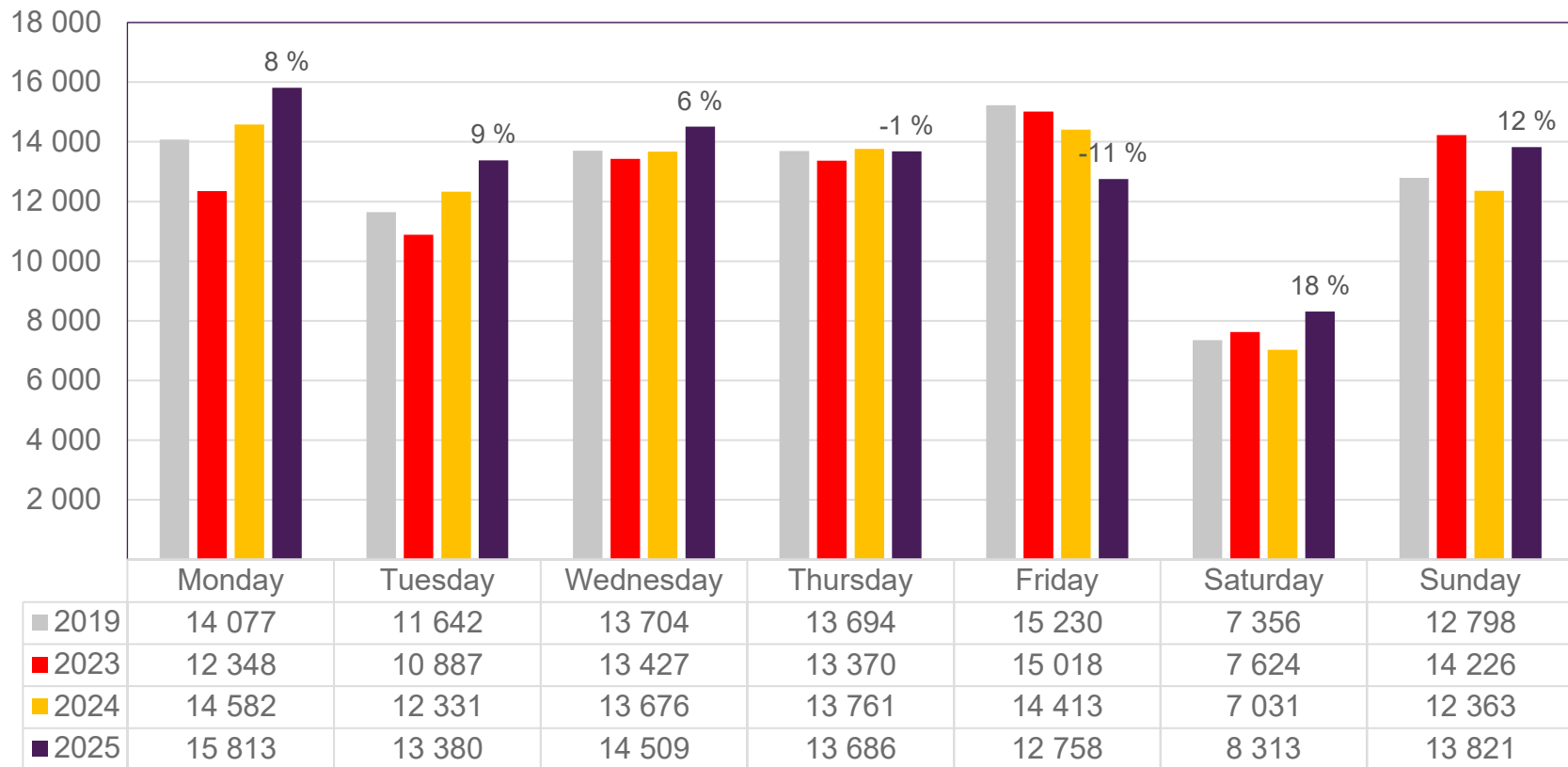


# Passengers OSL domestic per week

The change is measured against the same week in 2024



# Passengers BGO total per day, week 2

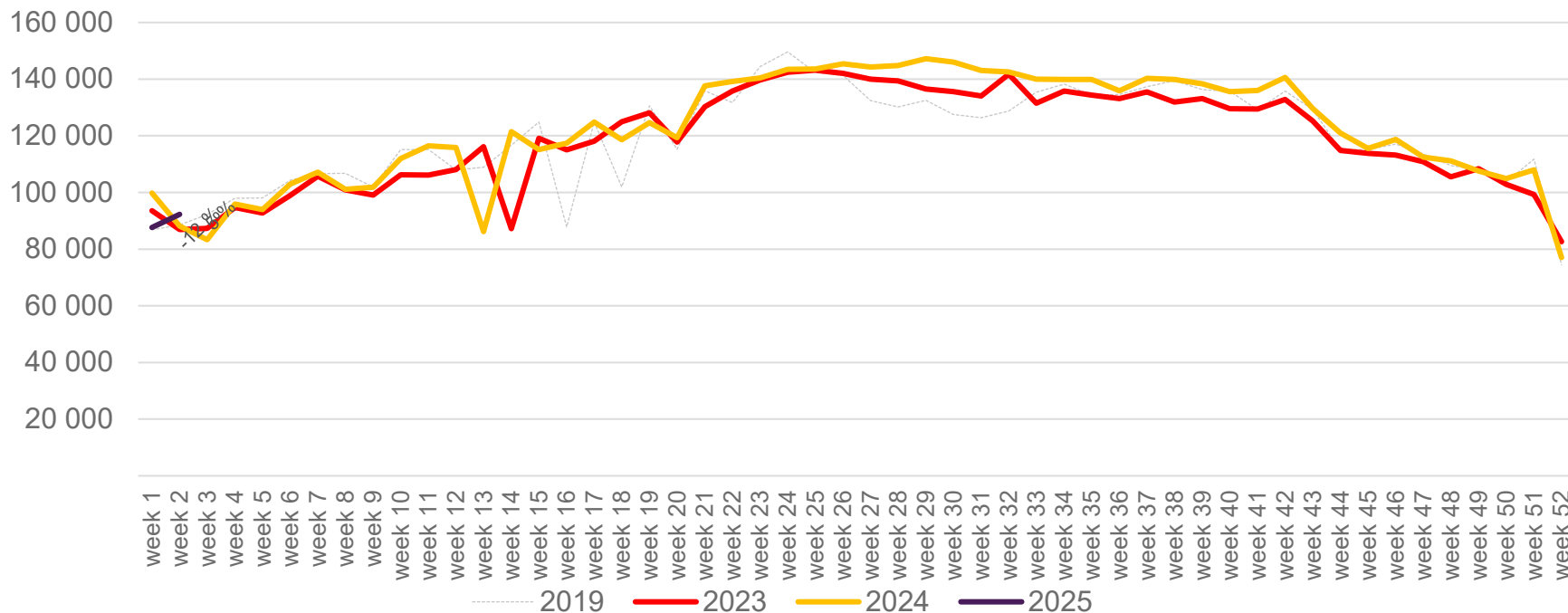


The change is measured against the same week in 2024

Source: SIA, Avinor Statistics

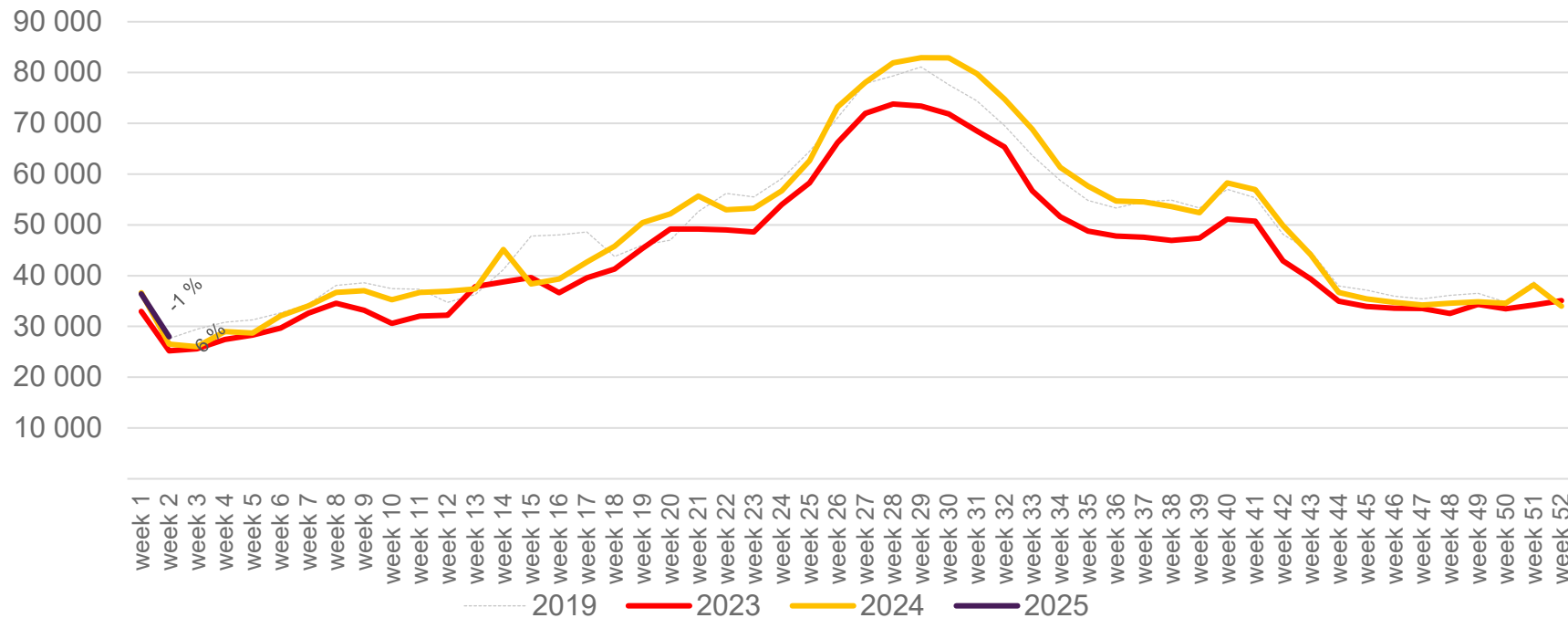
# Passengers BGO total per week

The change is measured against the same week in 2024



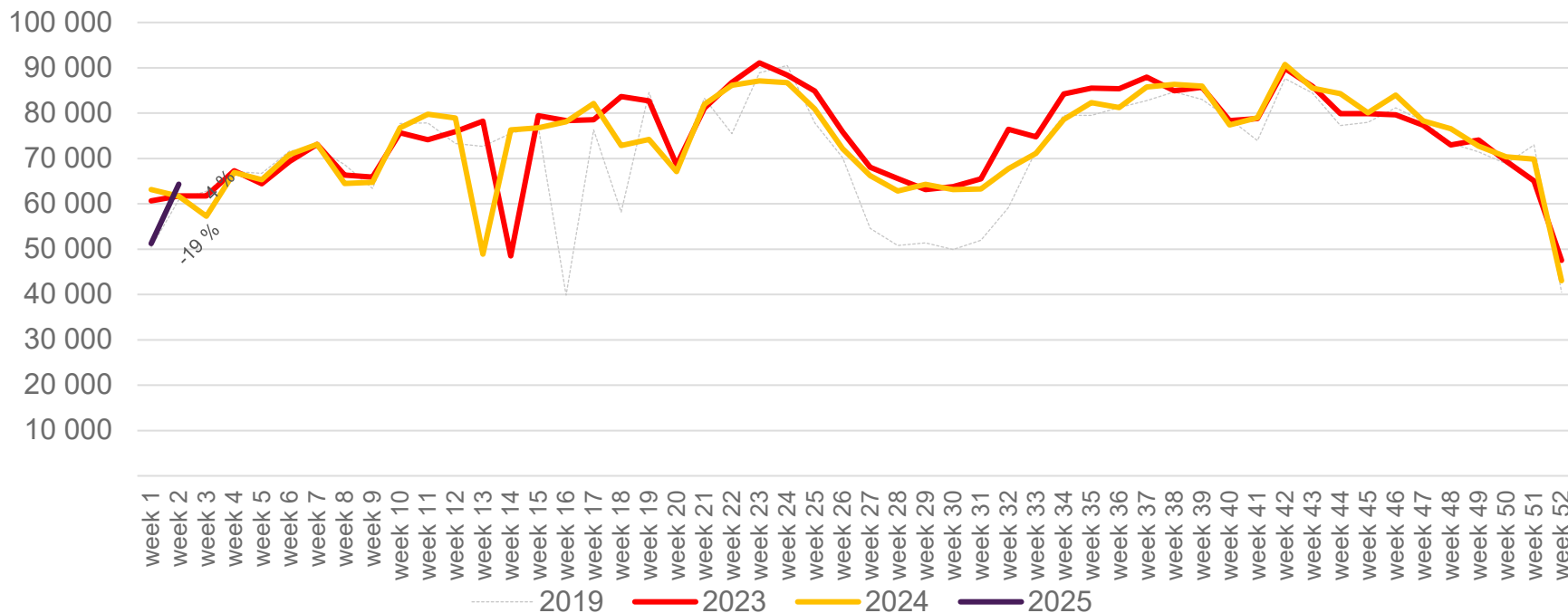
# Passengers BGO international per week

The change is measured against the same week in 2024

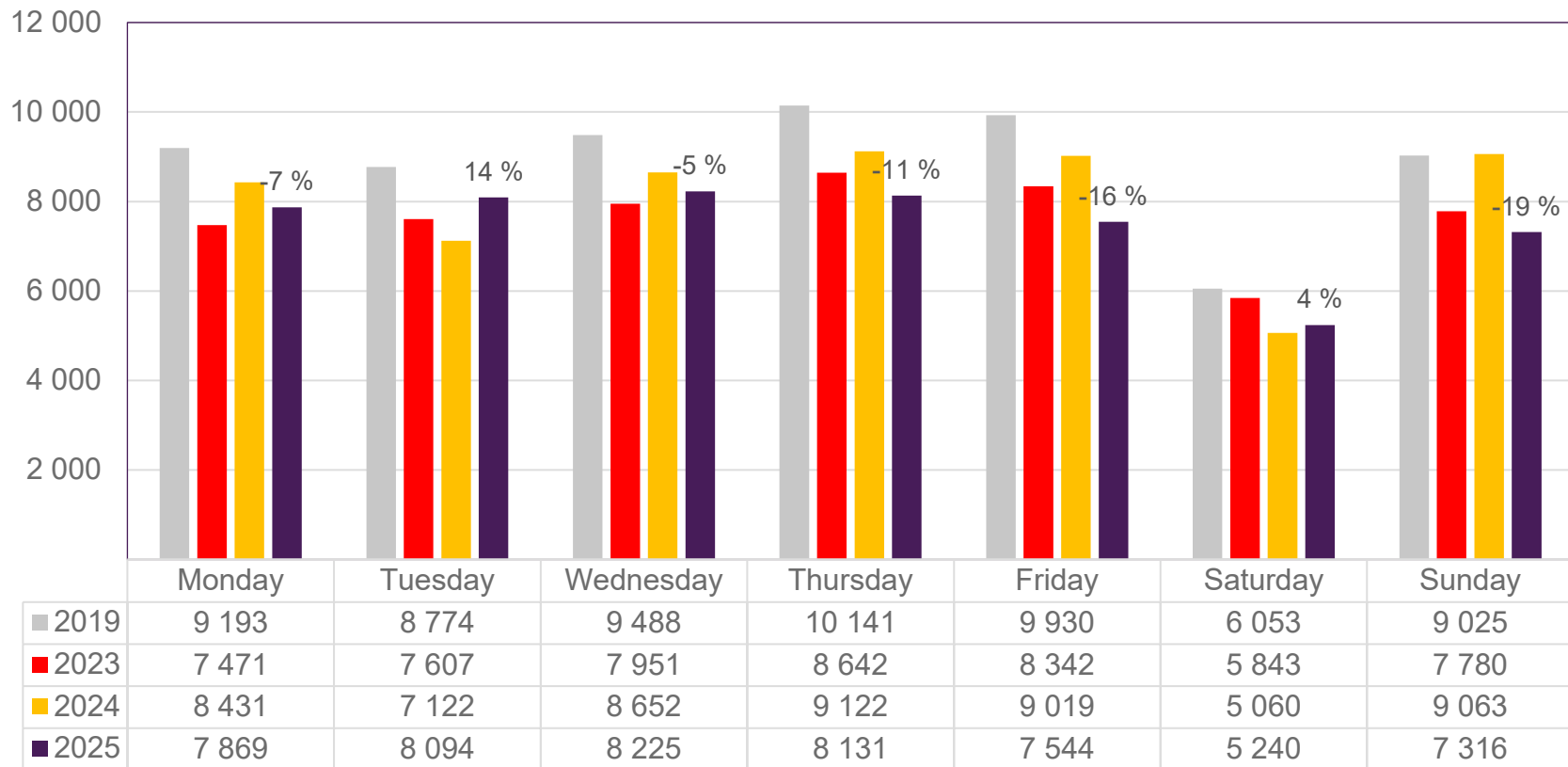


# Passengers BGO domestic per week

The change is measured against the same week in 2024



# Passengers SVG total per day, week 2

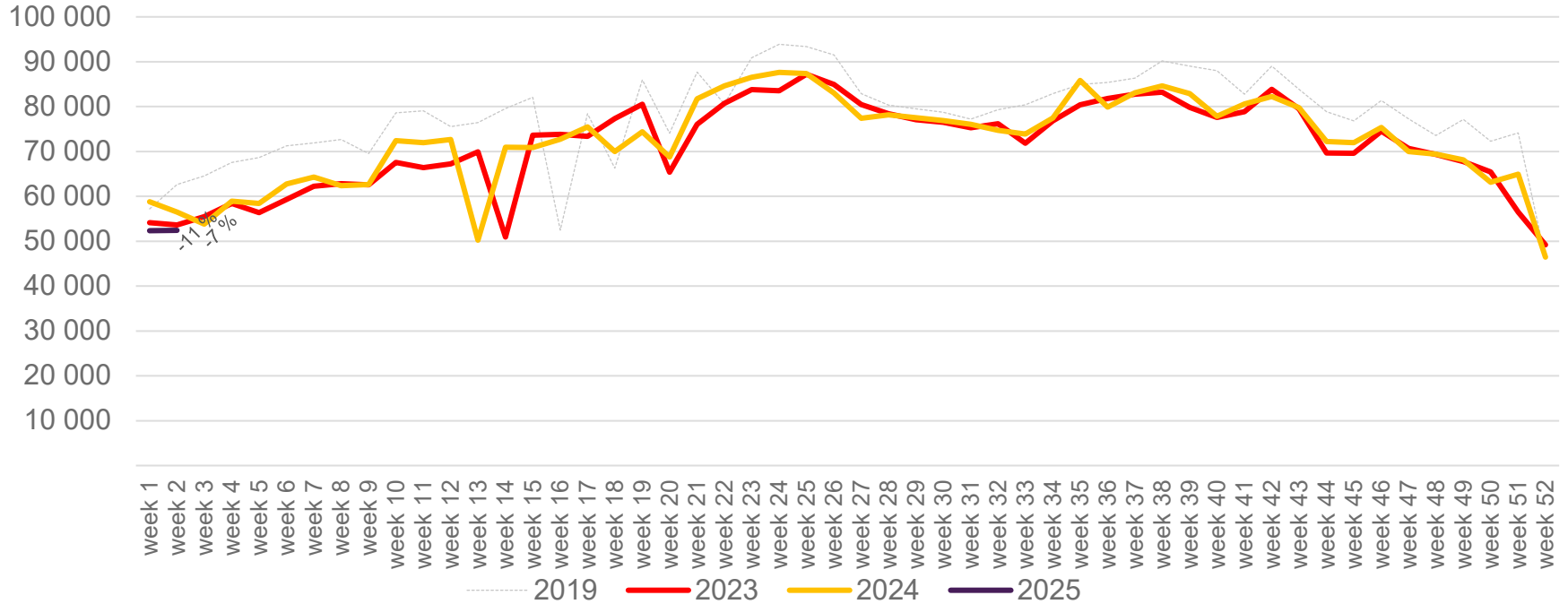


The change is measured against the same week in 2024

Source: SIA, Avinor Statistics

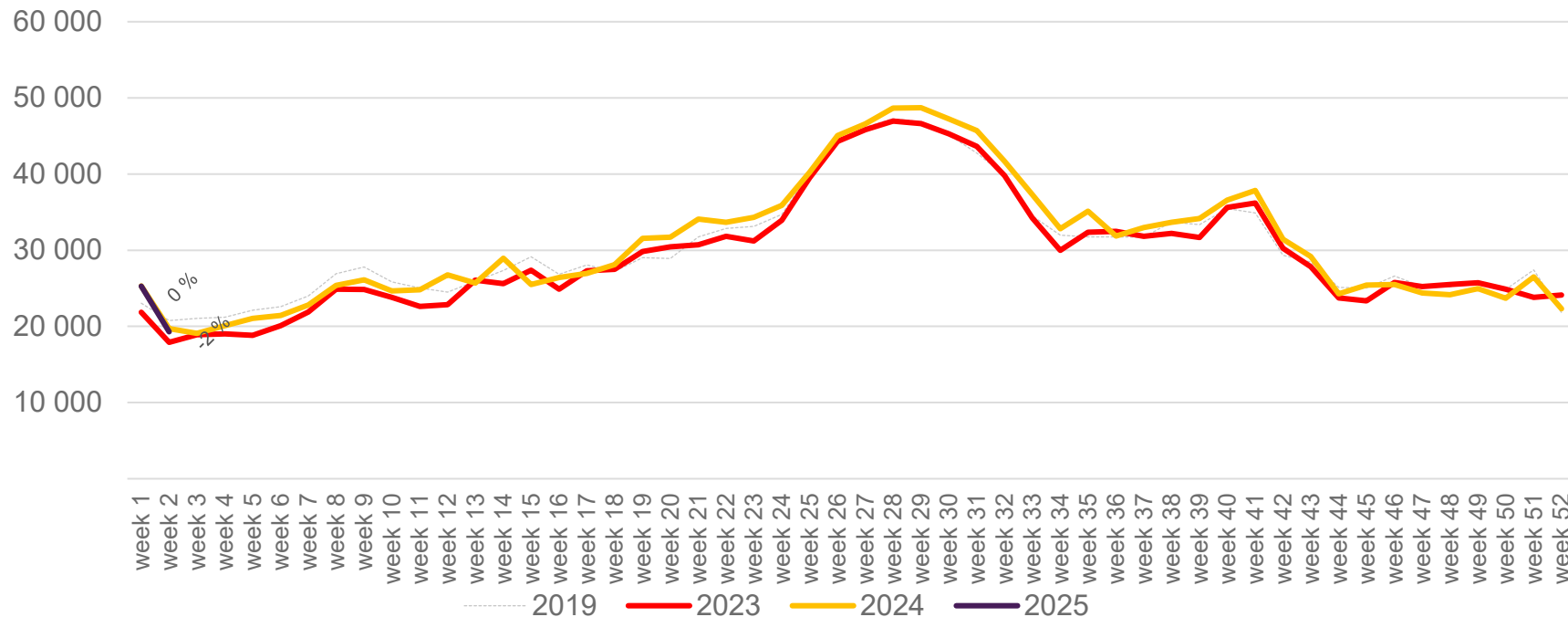
# Passengers SVG total per week

The change is measured against the same week in 2024



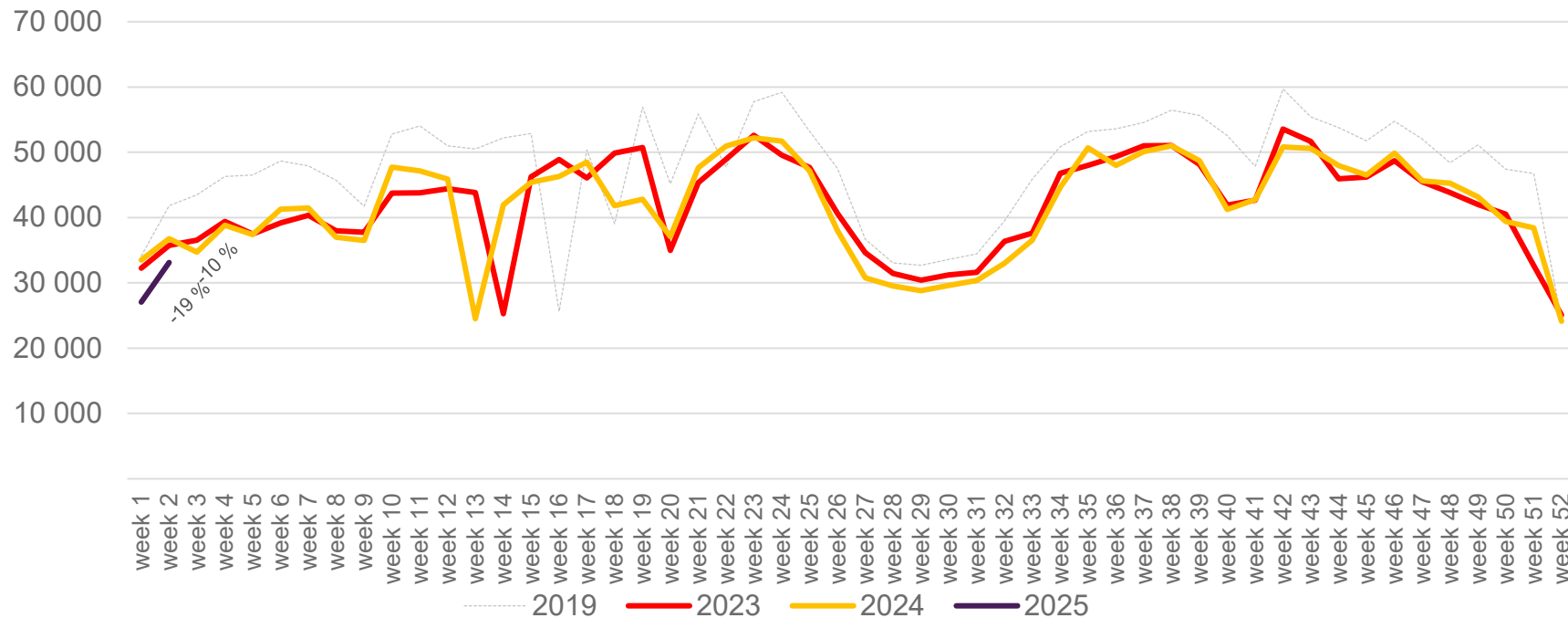
# Passengers SVG international per week

The change is measured against the same week in 2024

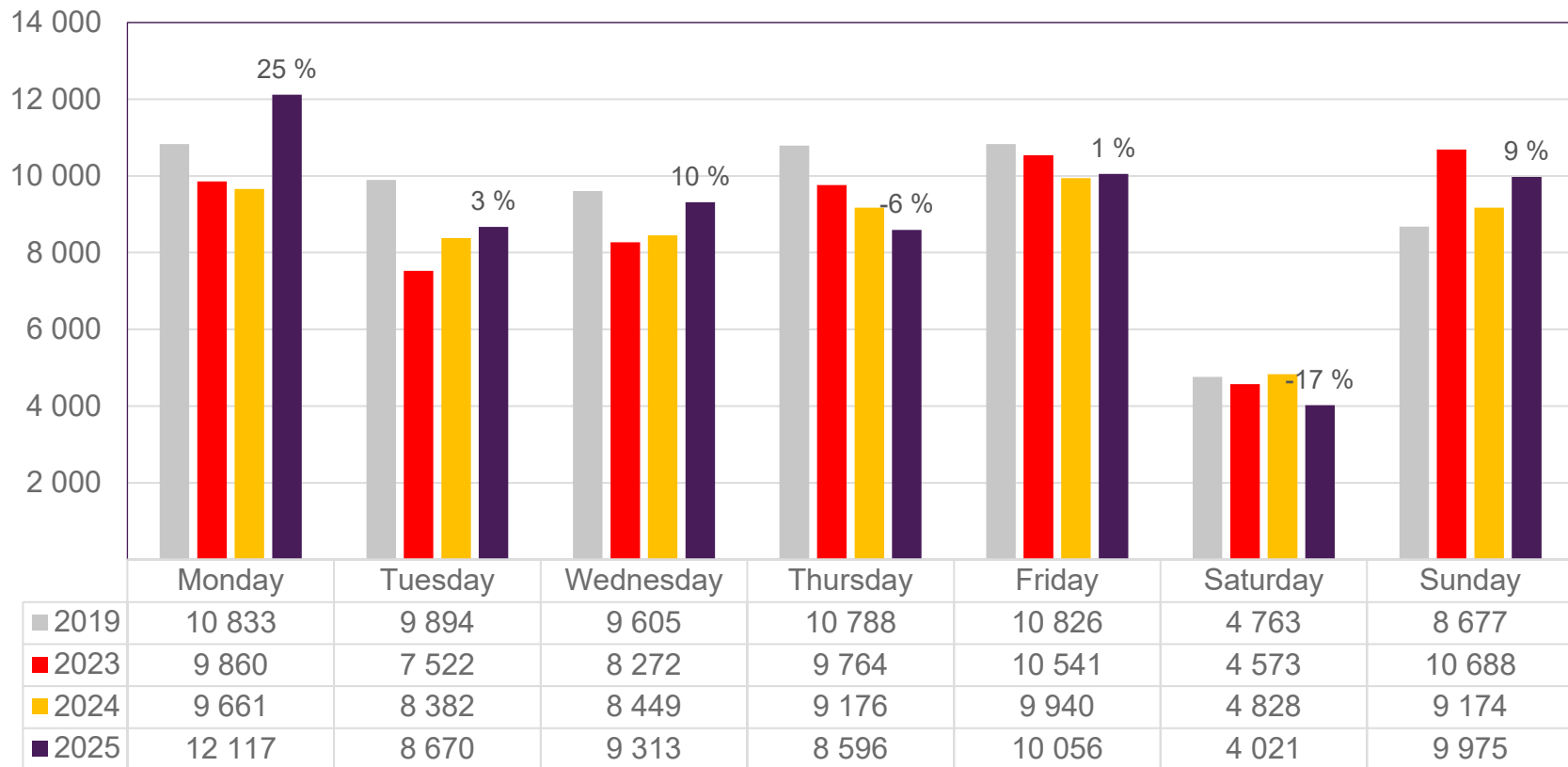


# Passengers SVG domestic per week

The change is measured against the same week in 2024



# Passengers TRD total per day, week 2

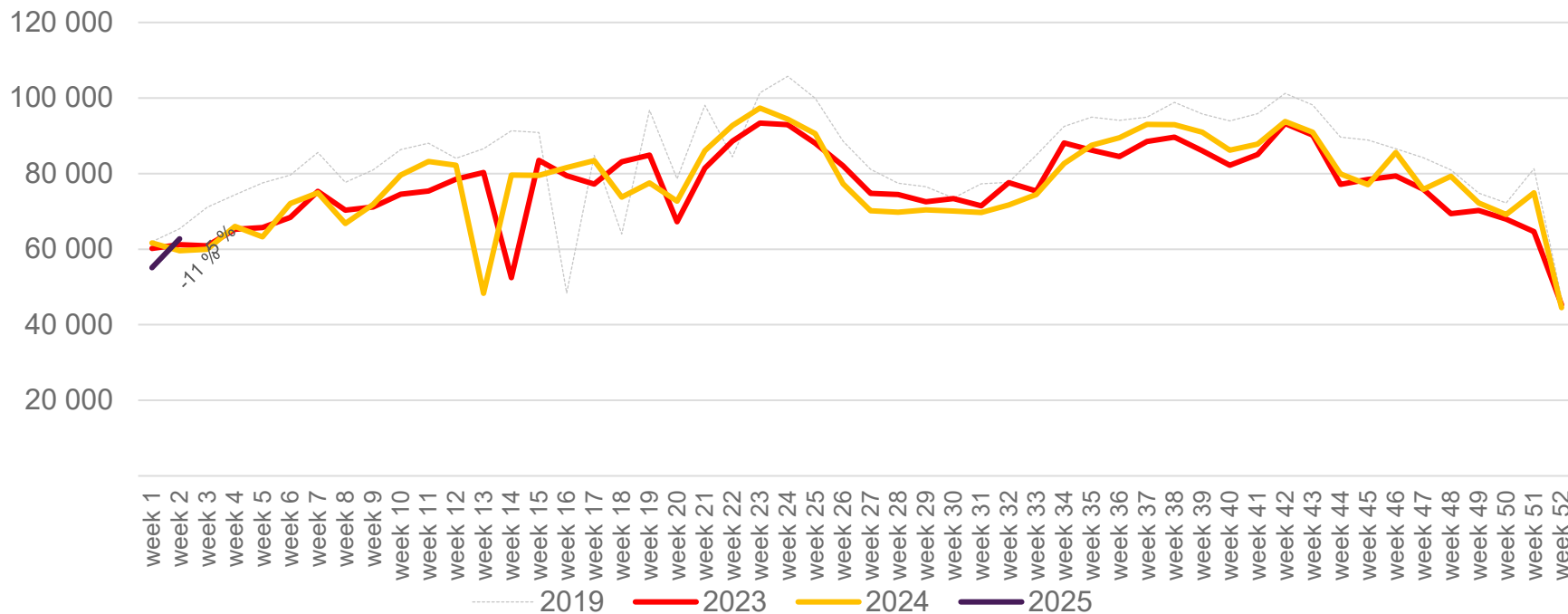


The change is measured against the same week in 2024

Source: SIA, Avinor Statistics

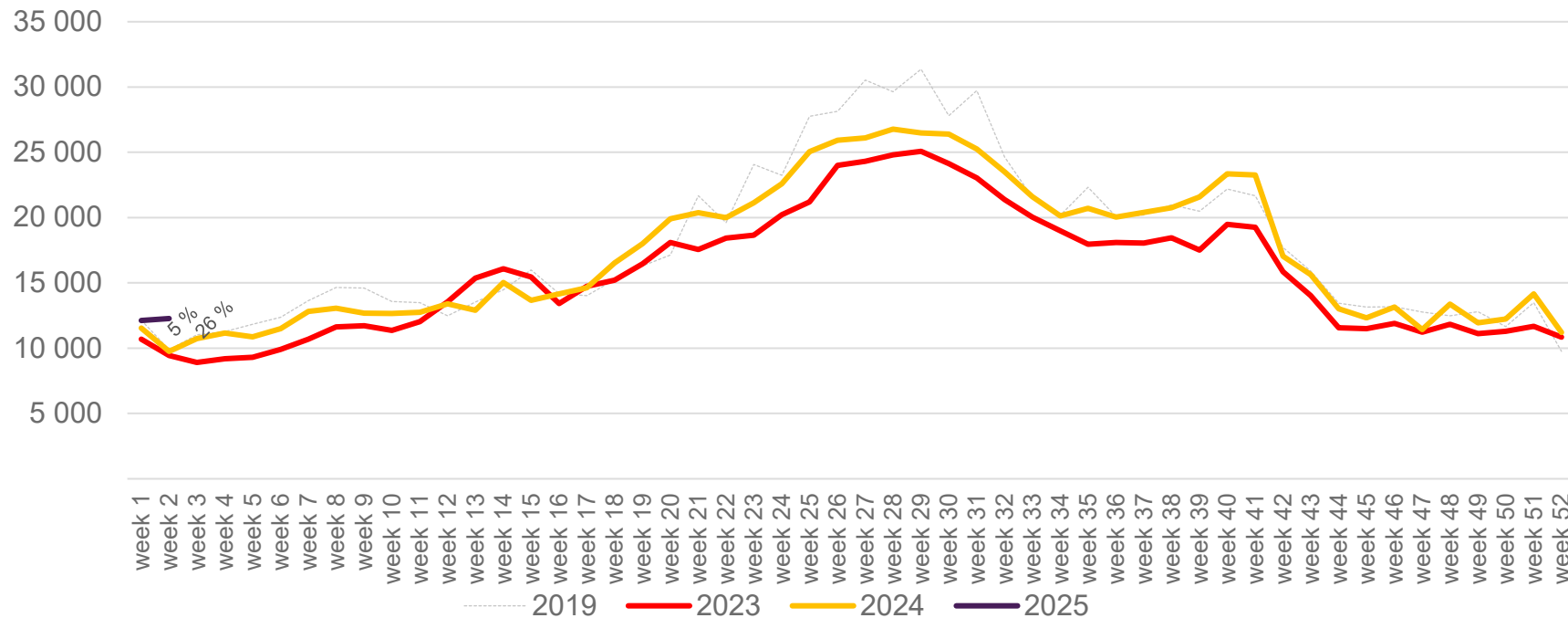
# Passengers TRD total per week

The change is measured against the same week in 2024



# Passengers TRD international per week

The change is measured against the same week in 2024



# Passengers TRD domestic per week

The change is measured against the same week in 2024

