



Passenger numbers per week

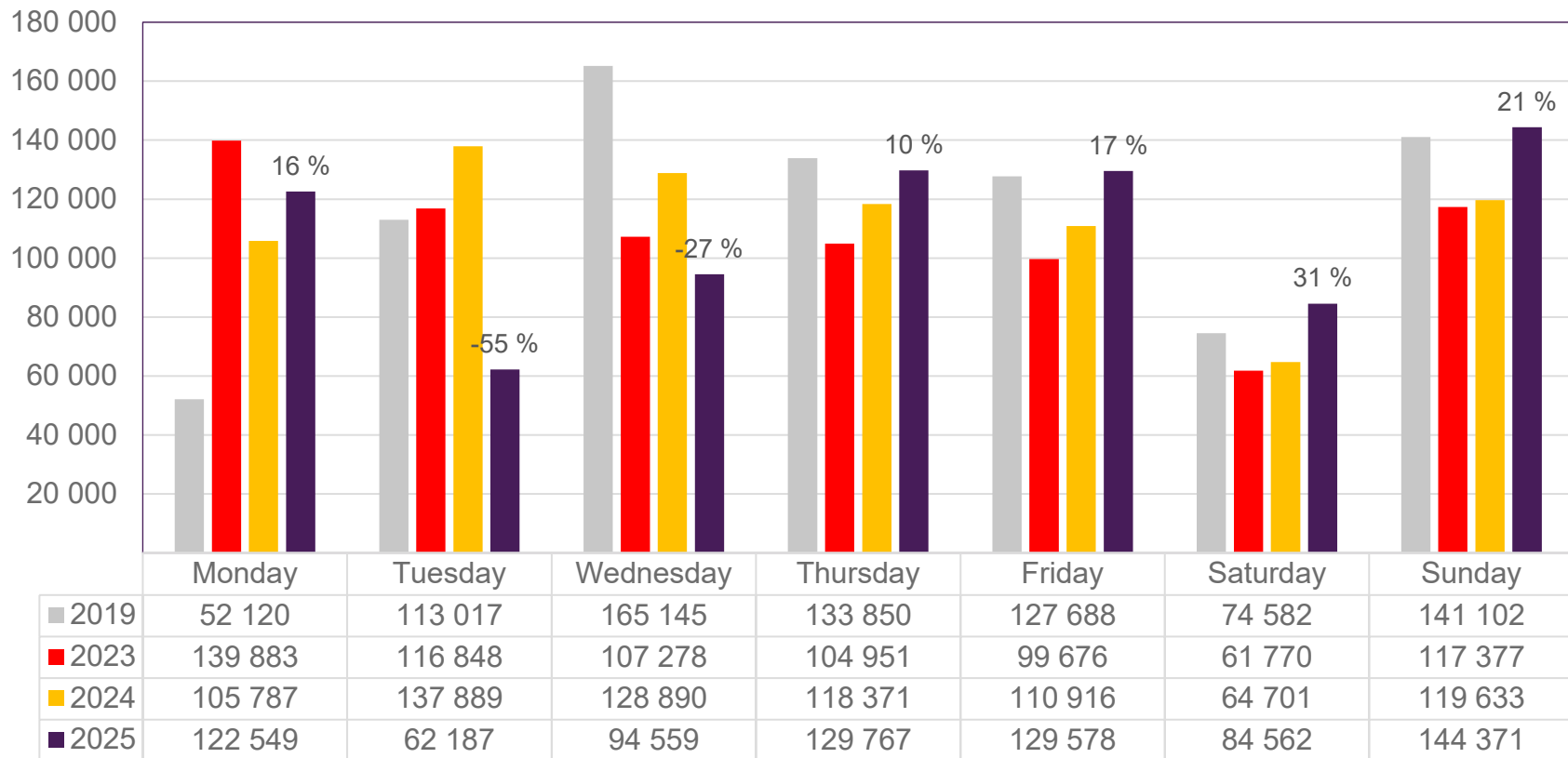
Preliminary figures

- The figures for the previous week are preliminary. It takes some time for all passenger numbers to be reported, so the figures for the previous week may be lower than the final figures.
- The figures are taken from SIA, Avinor's traffic database.

Top 10 airports, total week 1

Airport	2019	2023	2024	2025	2025 vs. 2024	
					Change	Change %
Oslo/Gardermoen	437 317	379 719	394 590	408 632	14 042	4 %
Bergen/Flesland	86 851	93 573	99 768	86 331	-13 437	-13 %
Tromsø/Langnes	46 452	45 748	54 419	61 411	6 992	13 %
Trondheim/Værnes	61 963	60 185	61 690	54 490	-7 200	-12 %
Stavanger/Sola	57 184	54 114	58 819	52 567	-6 252	-11 %
Bodø	23 980	24 787	25 350	22 118	-3 232	-13 %
Ålesund/Vigra	17 802	16 073	17 311	14 269	-3 042	-18 %
Harstad/Narvik/Evenes	12 355	12 078	12 541	12 002	-539	-4 %
Kristiansand/Kjevik	14 898	13 134	11 619	9 670	-1 949	-17 %
Bardufoss	5 143	3 954	4 817	3 165	-1 652	-34 %

Passengers Avinor total per day, week 1

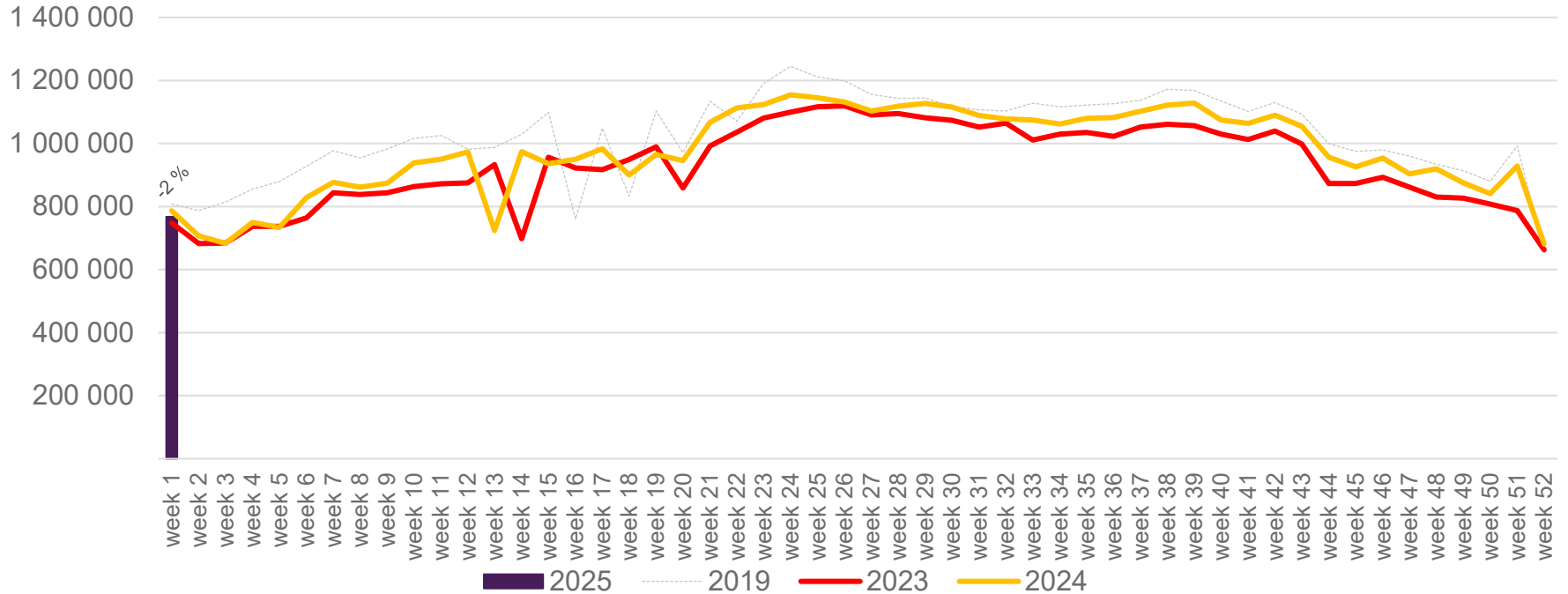


The change is measured against the same week in 2024

Source: SIA, Avinor Statistics

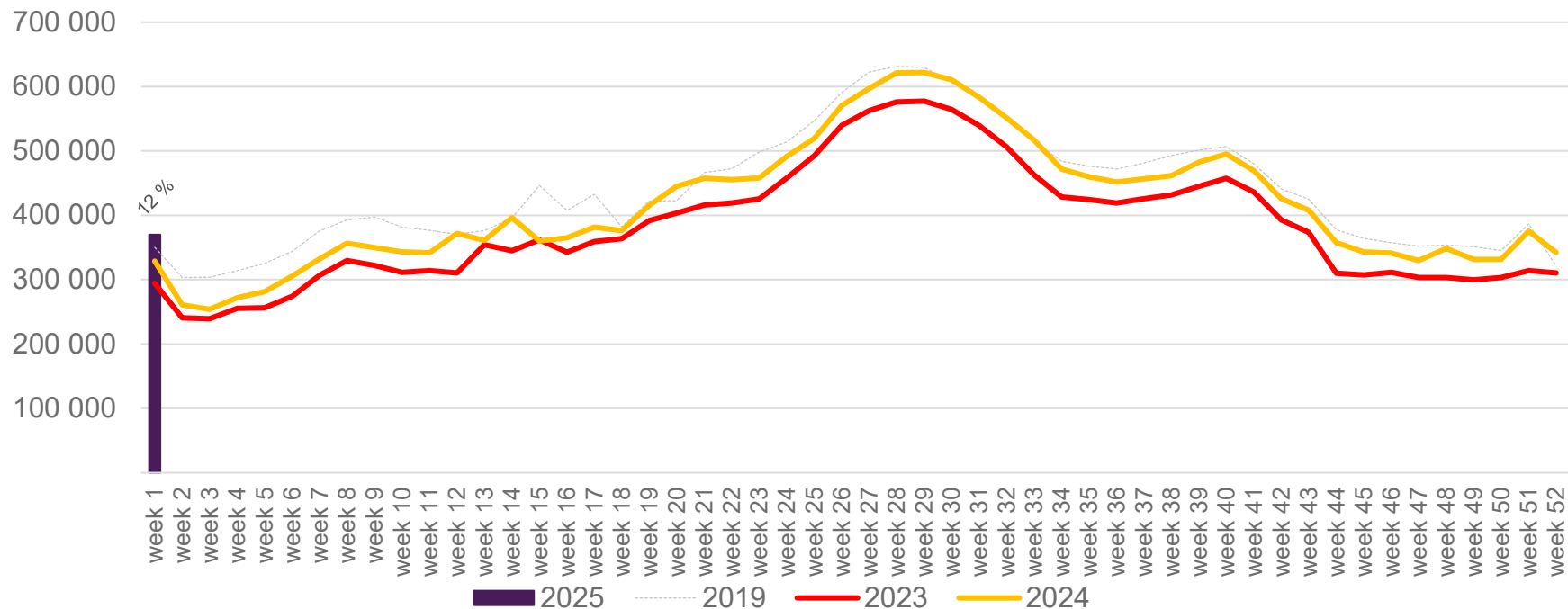
Passengers Avinor total per week

The change is measured against the same week in 2024



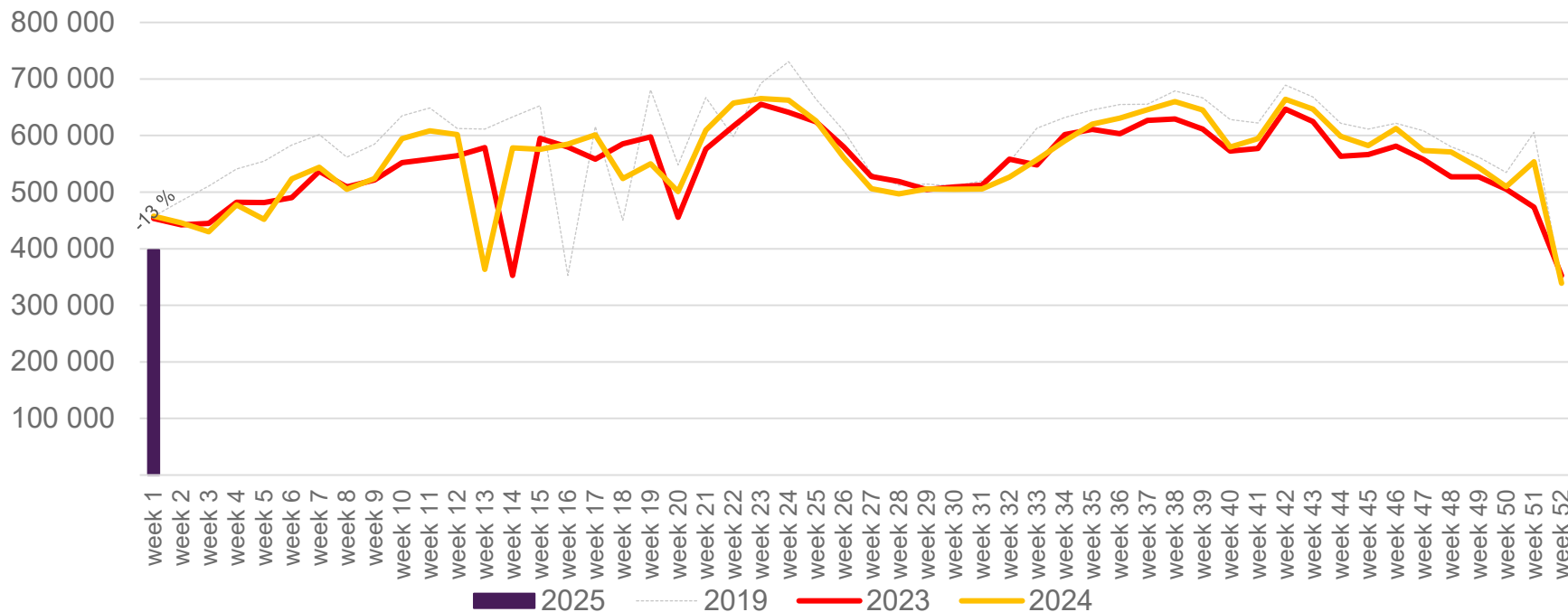
Passengers Avinor international per week

The change is measured against the same week in 2024

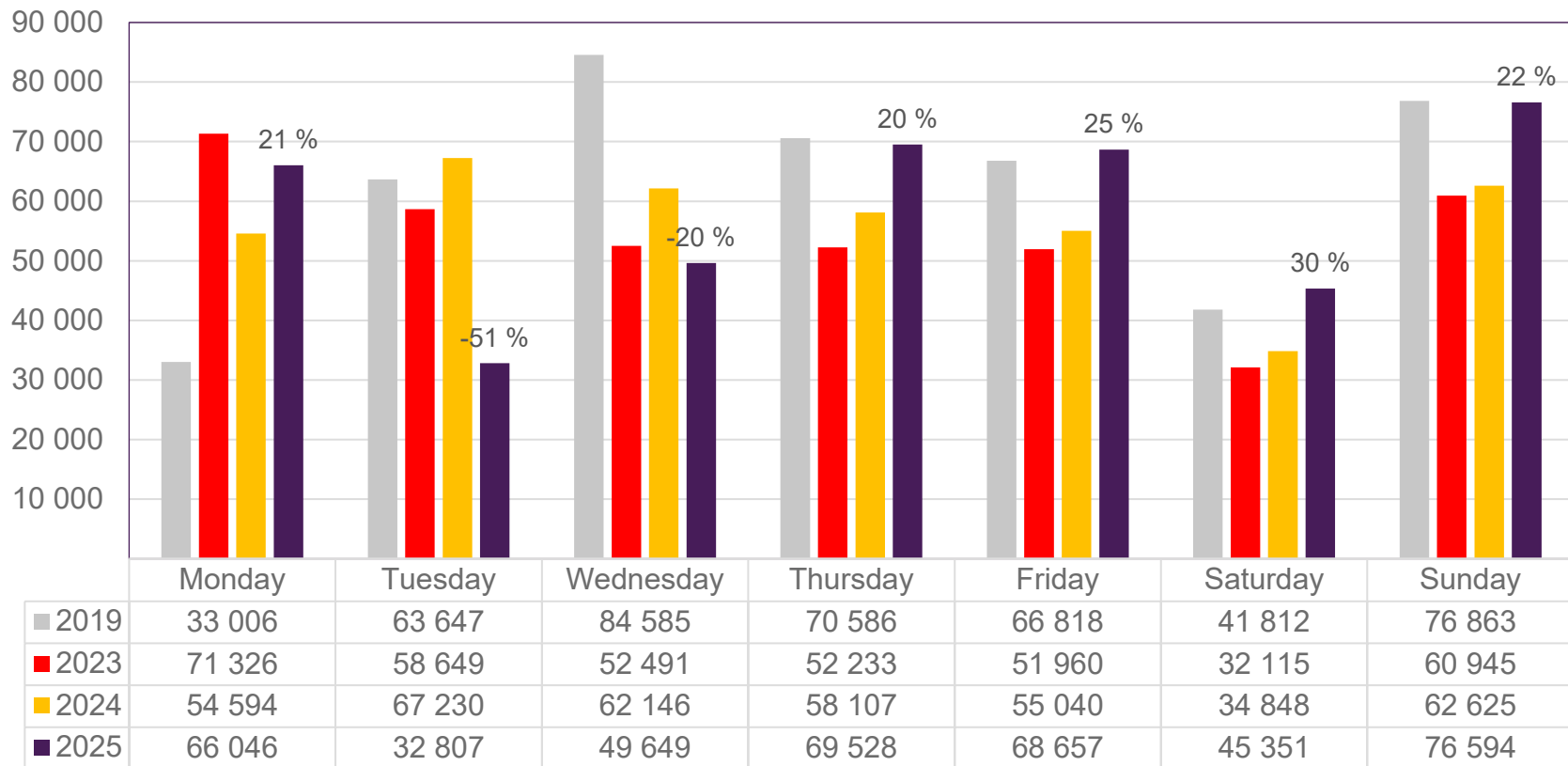


Passengers Avinor domestic per week

The change is measured against the same week in 2024



Passengers OSL total per day, week 1

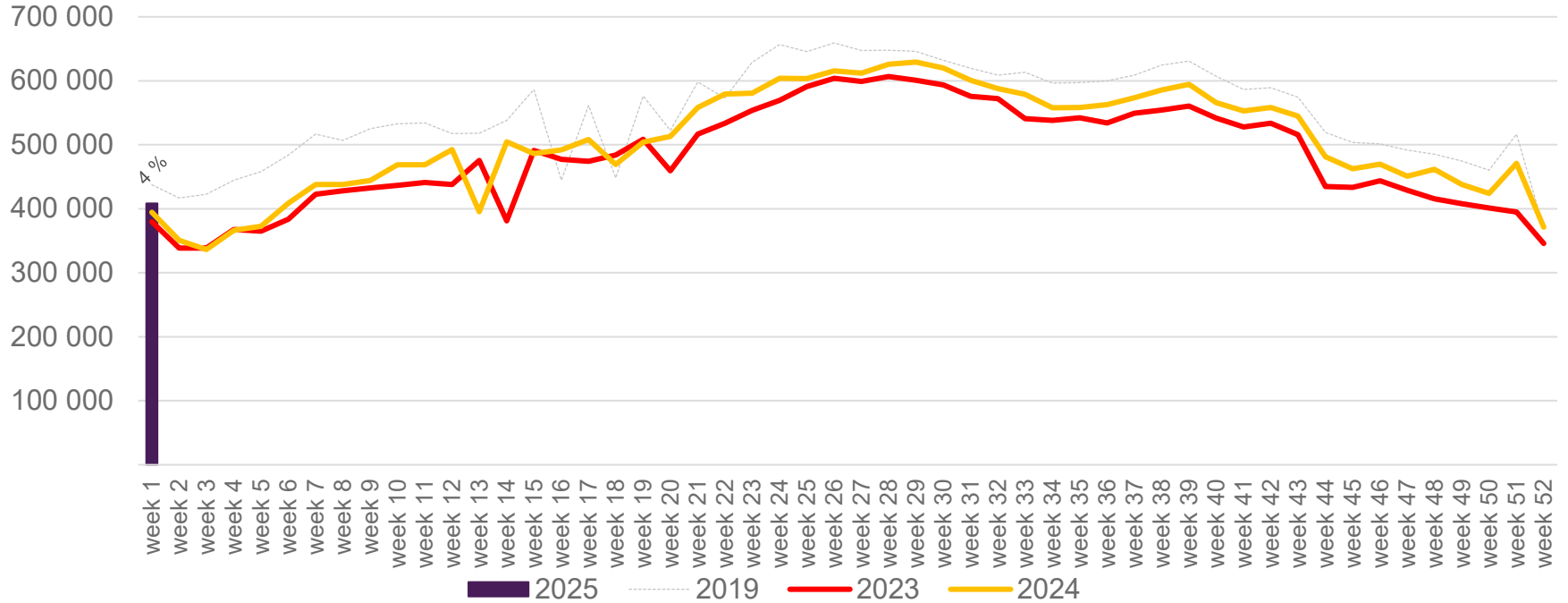


The change is measured against the same week in 2024

Source: SIA, Avinor Statistics

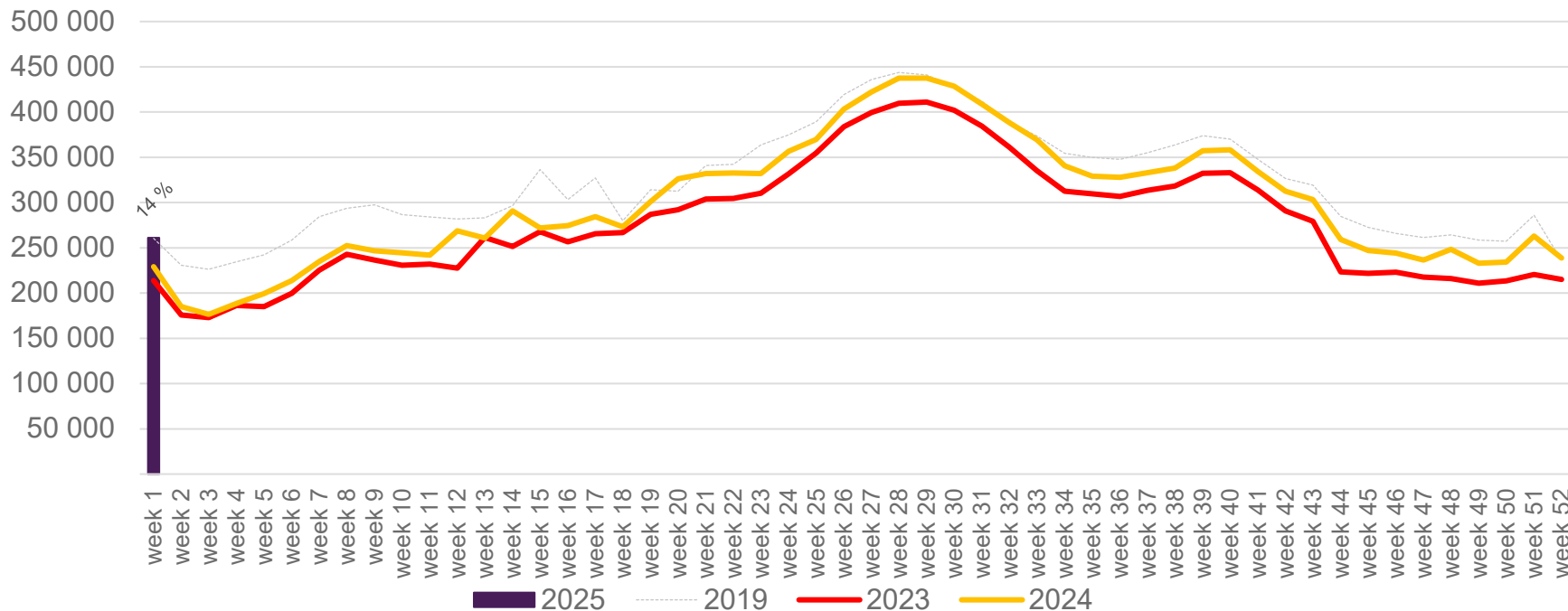
Passengers OSL total per week

The change is measured against the same week in 2024



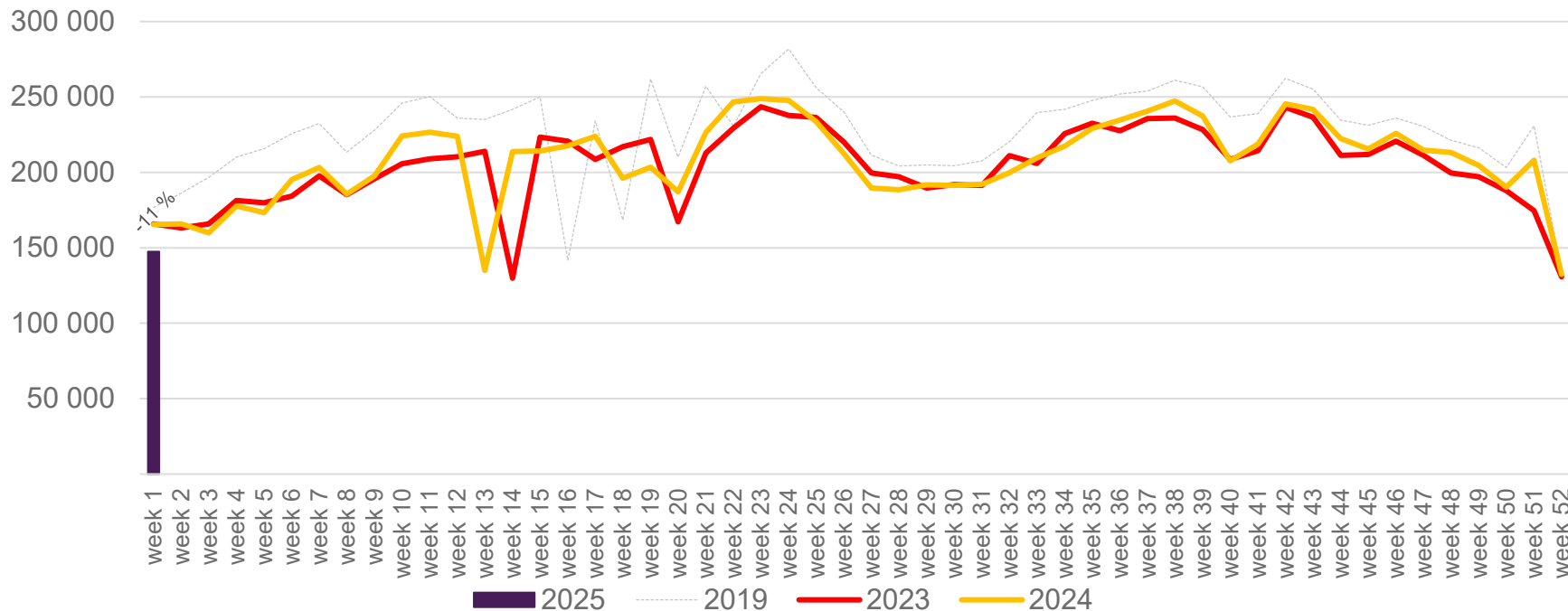
Passengers OSL international per week

The change is measured against the same week in 2024

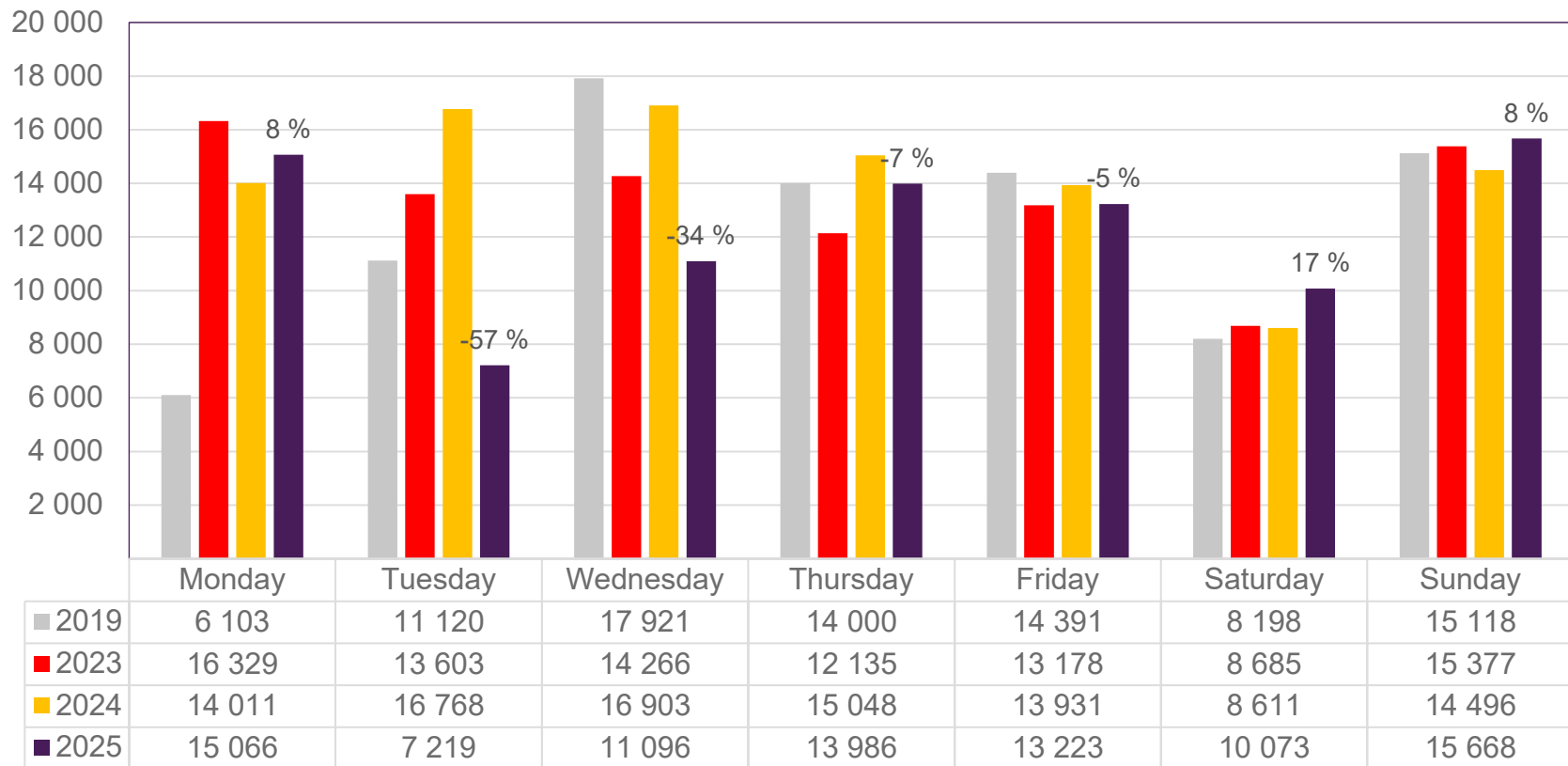


Passengers OSL domestic per week

The change is measured against the same week in 2024



Passengers BGO total per day, week 1

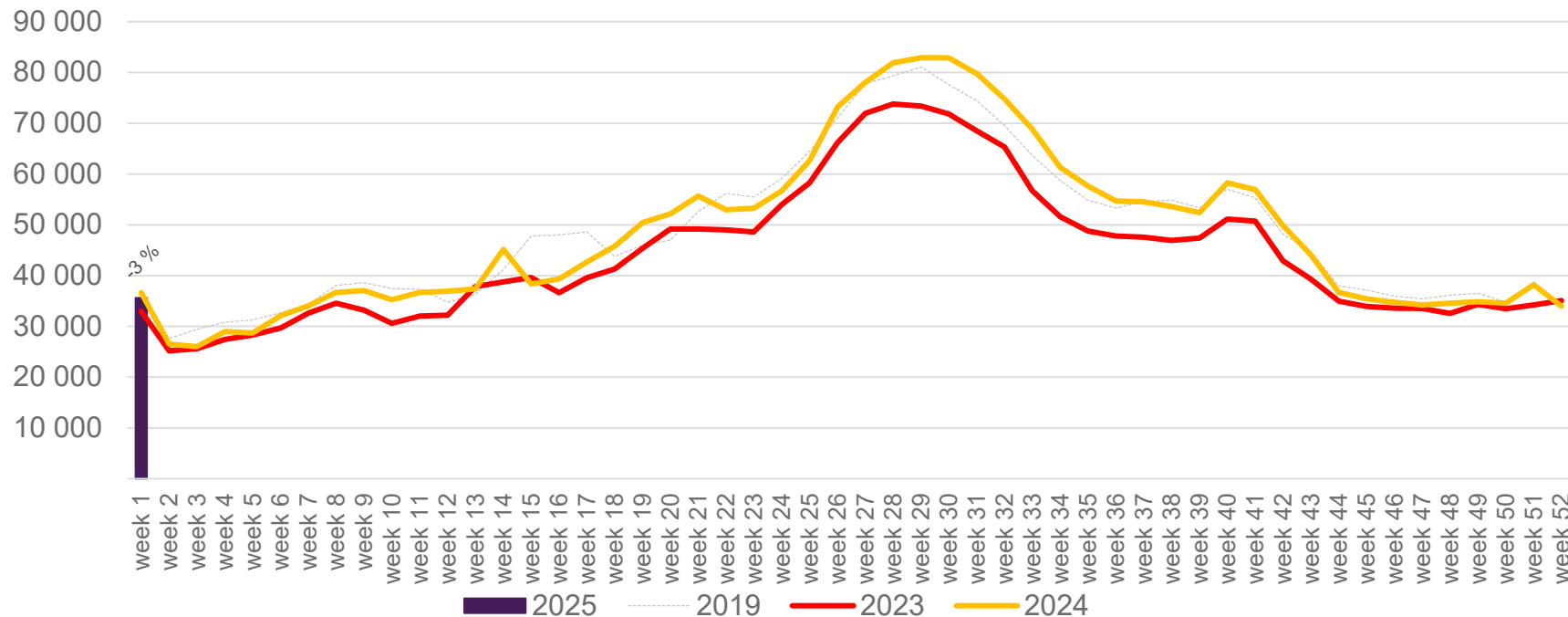


The change is measured against the same week in 2024

Source: SIA, Avinor Statistics

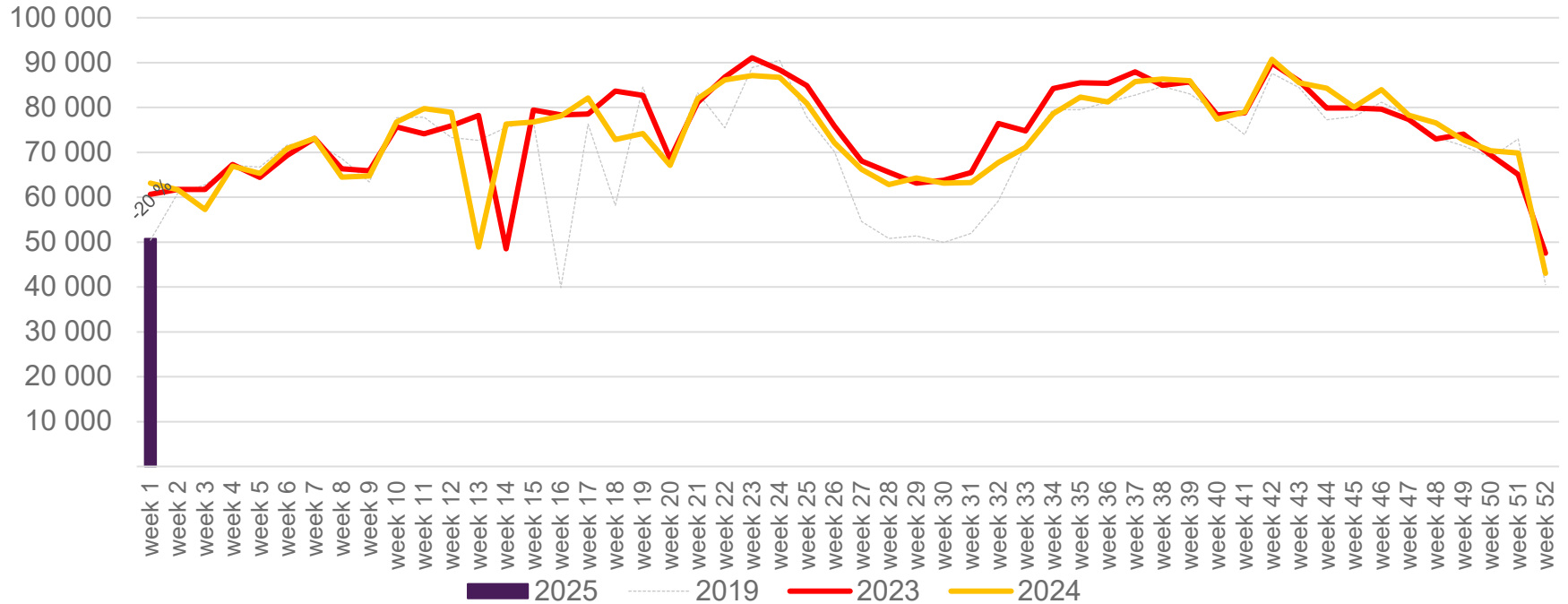
Passengers BGO international per week

The change is measured against the same week in 2024

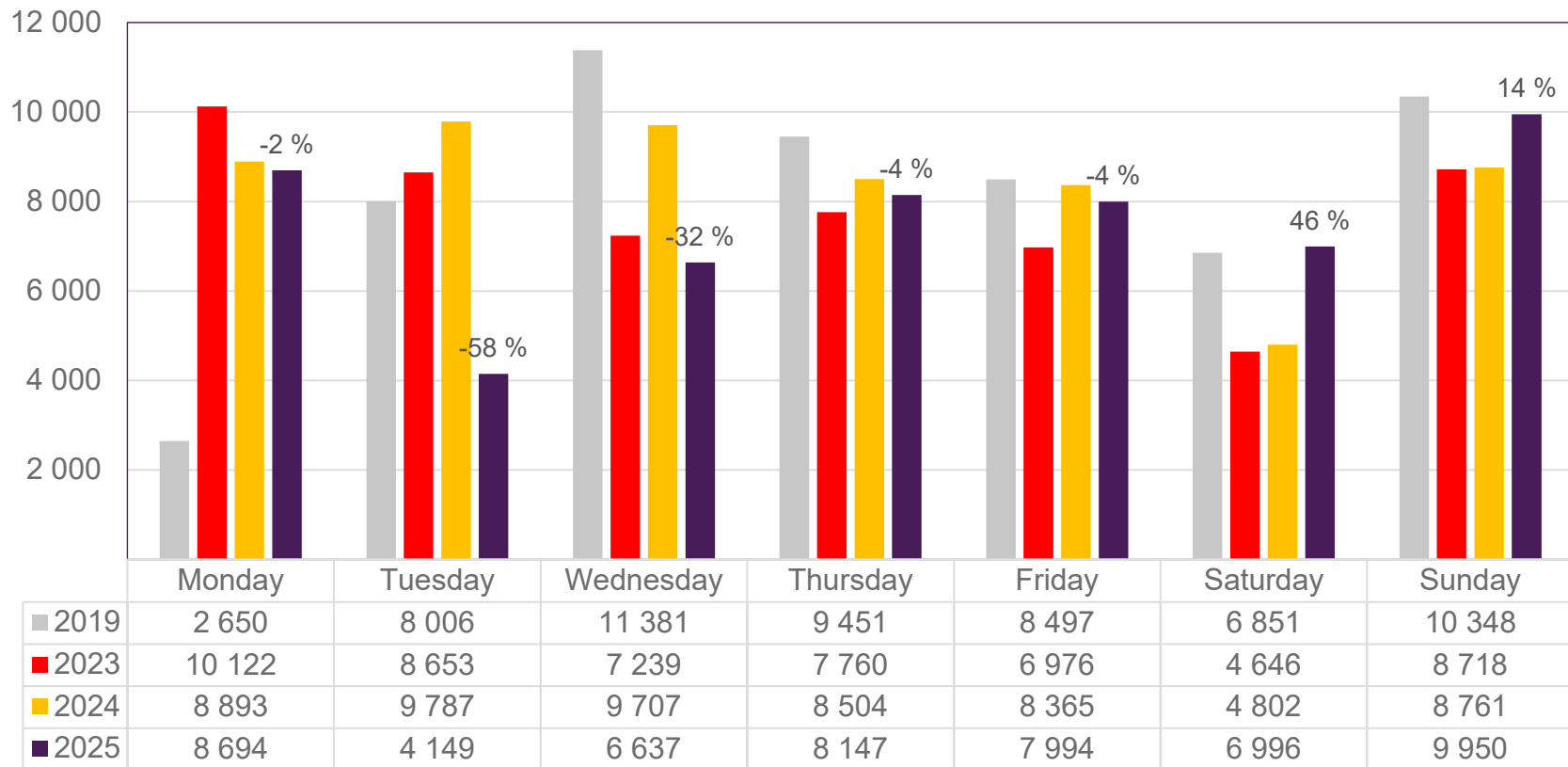


Passengers BGO domestic per week

The change is measured against the same week in 2024



Passengers SVG total per day, week 1

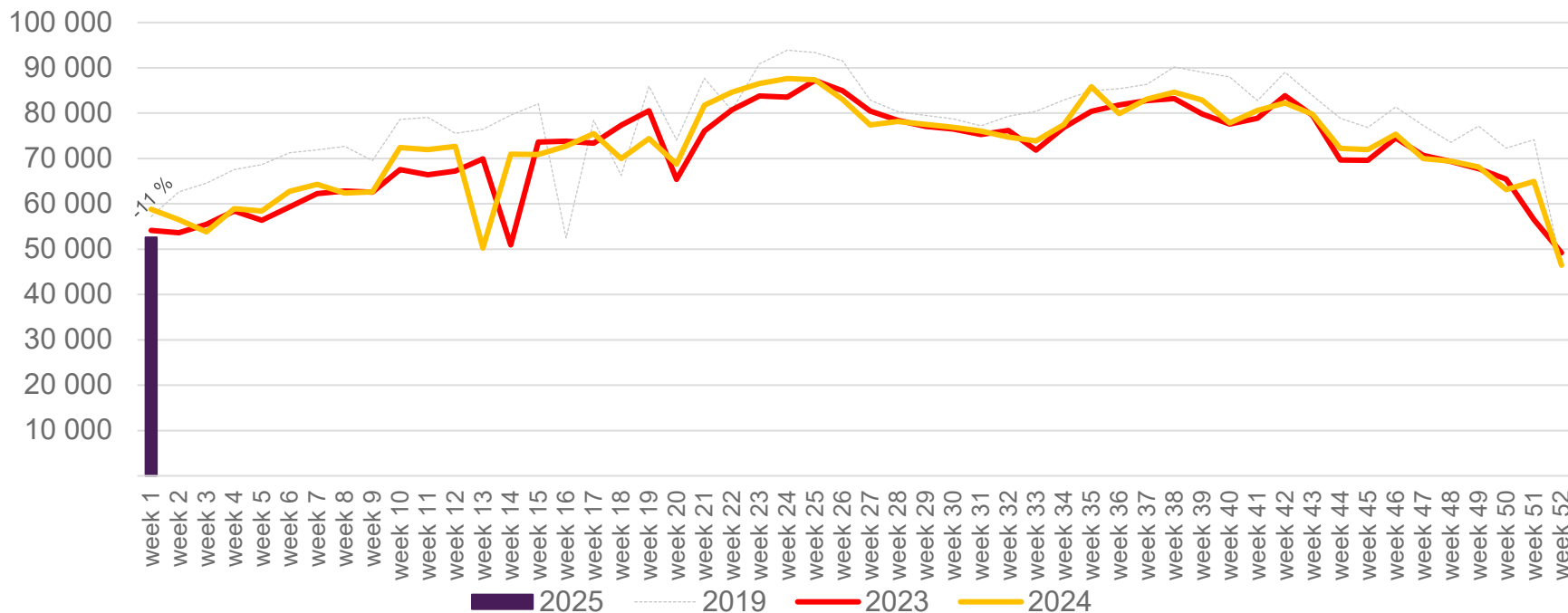


The change is measured against the same week in 2024

Source: SIA, Avinor Statistics

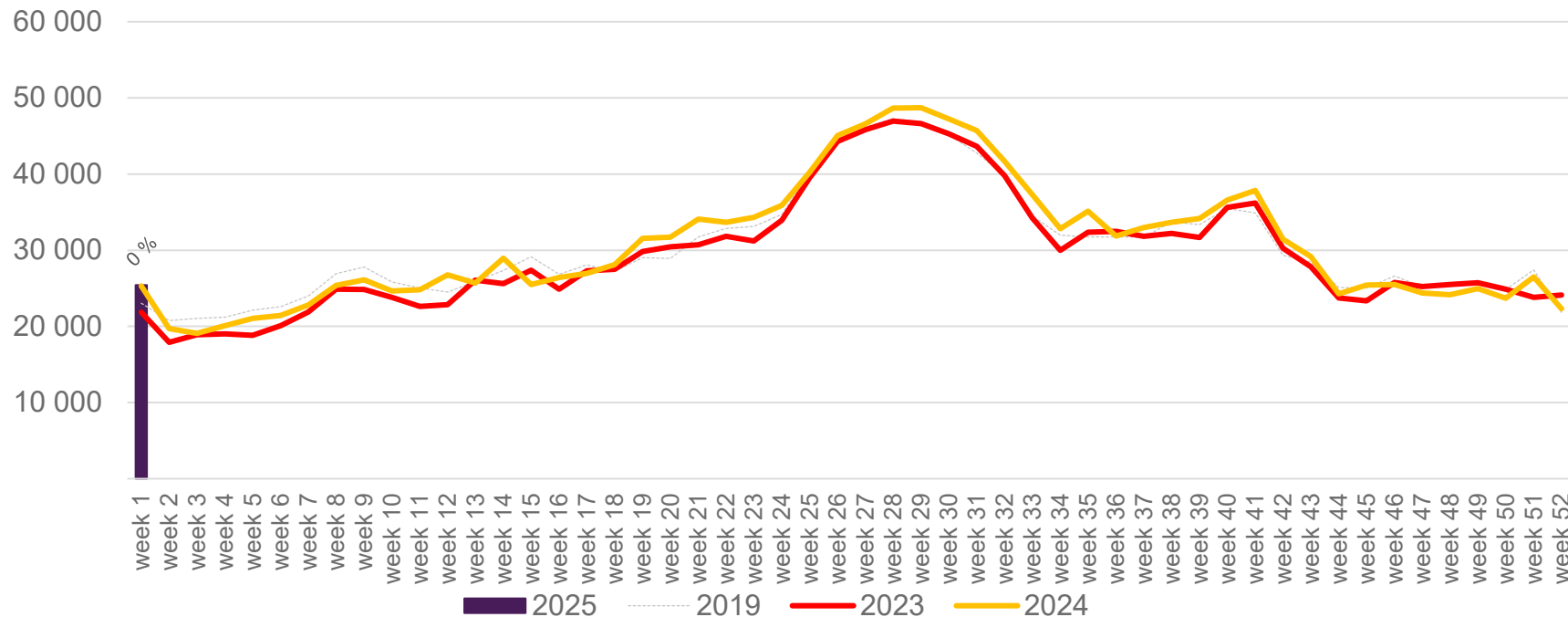
Passengers SVG total per week

The change is measured against the same week in 2024



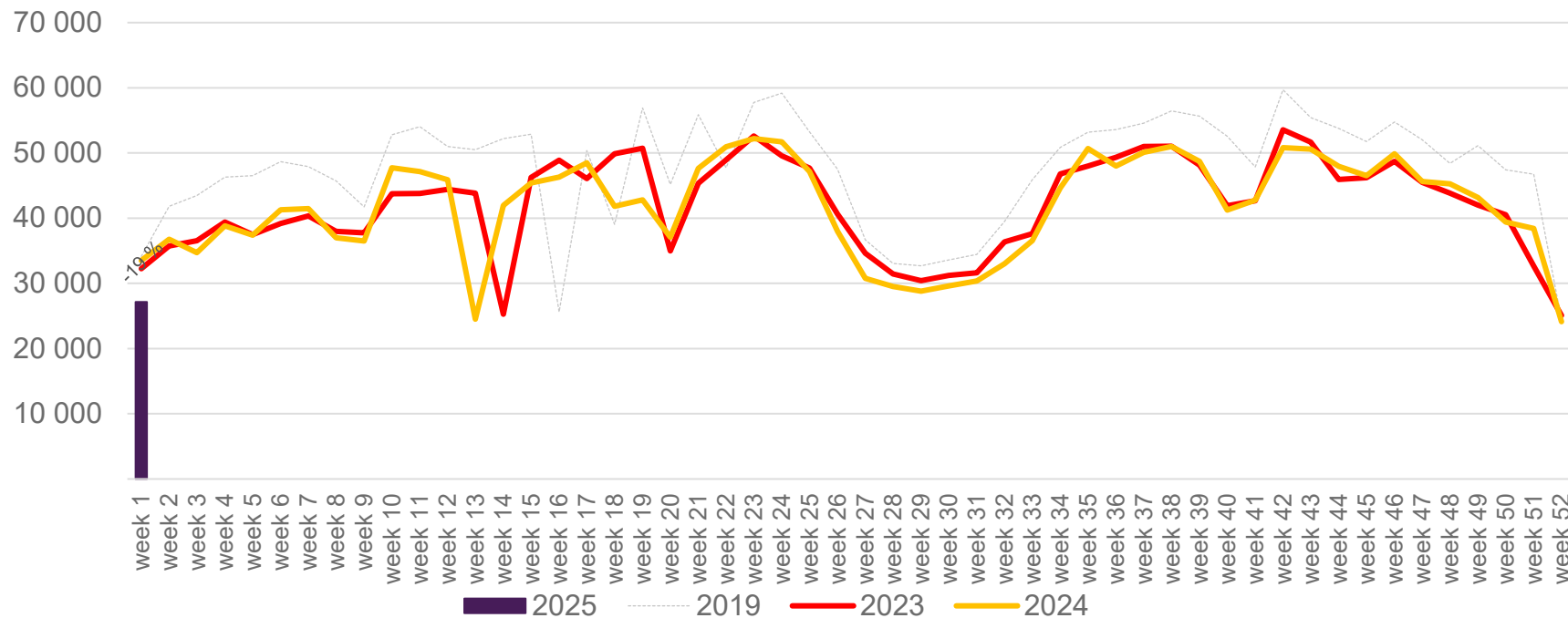
Passengers SVG international per week

The change is measured against the same week in 2024

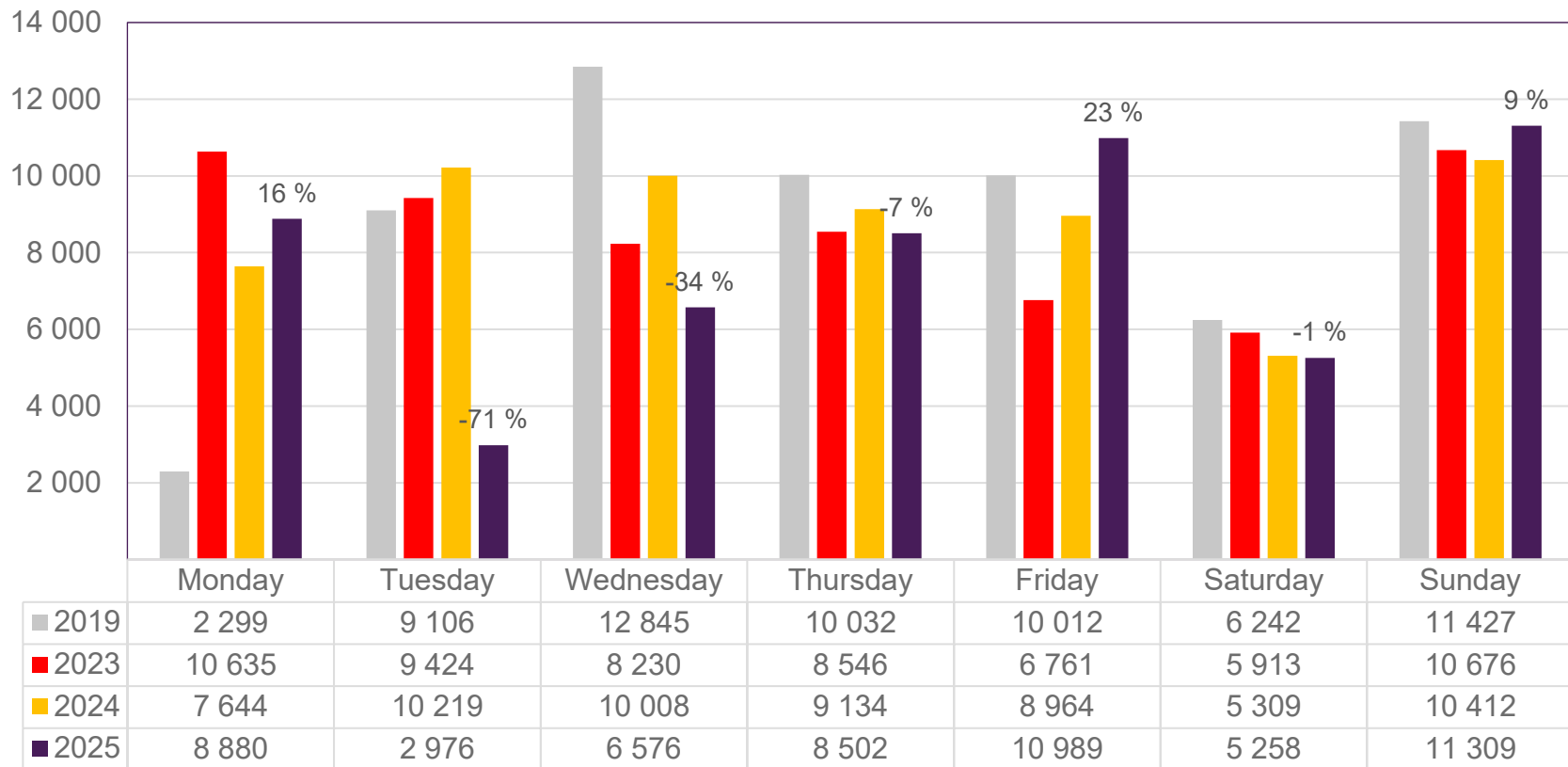


Passengers SVG domestic per week

The change is measured against the same week in 2024



Passengers TRD total per day, week 1

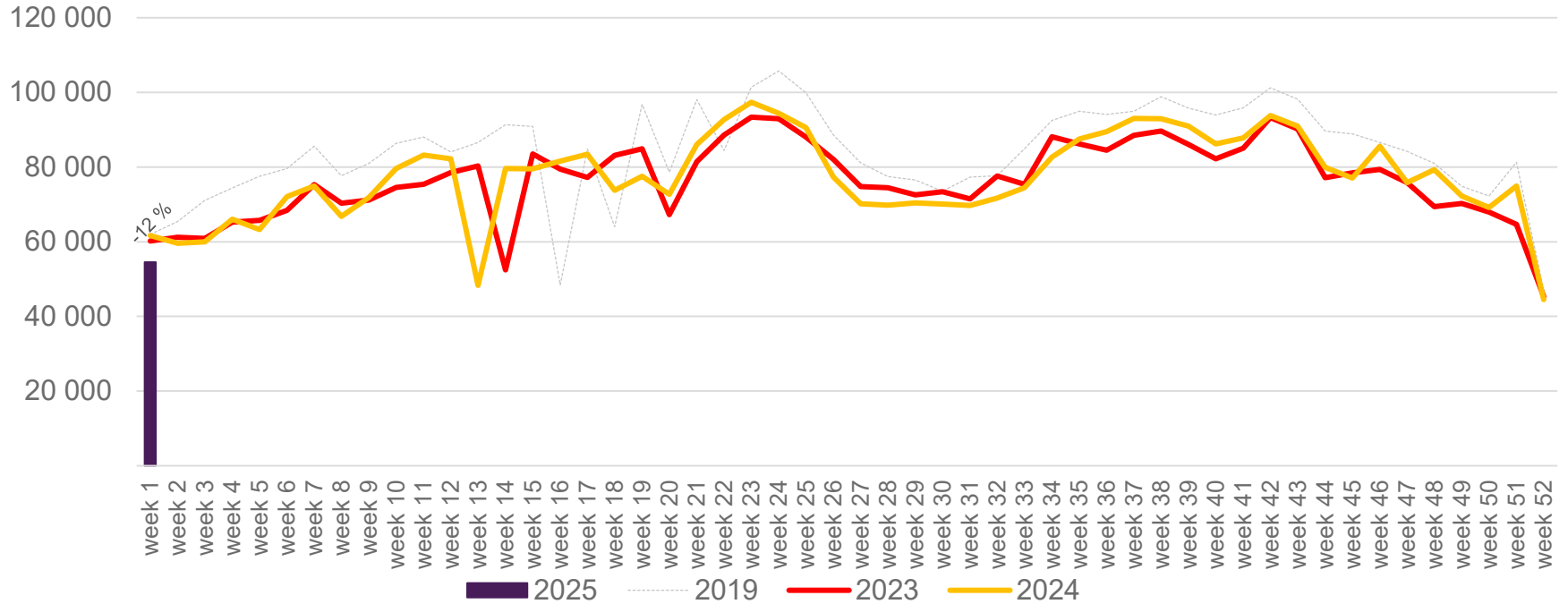


The change is measured against the same week in 2024

Source: SIA, Avinor Statistics

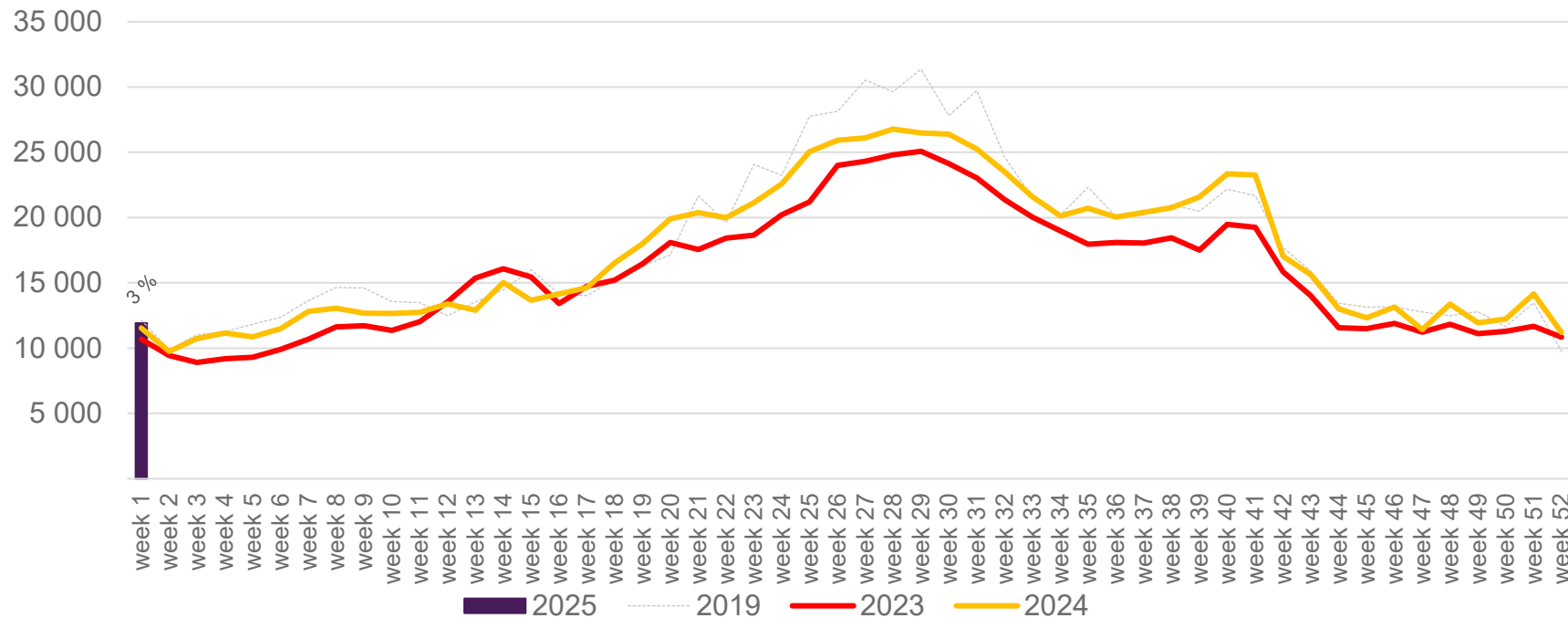
Passengers TRD total per week

The change is measured against the same week in 2024



Passengers TRD international per week

The change is measured against the same week in 2024



Passengers TRD domestic per week

The change is measured against the same week in 2024

