



Passenger numbers per week

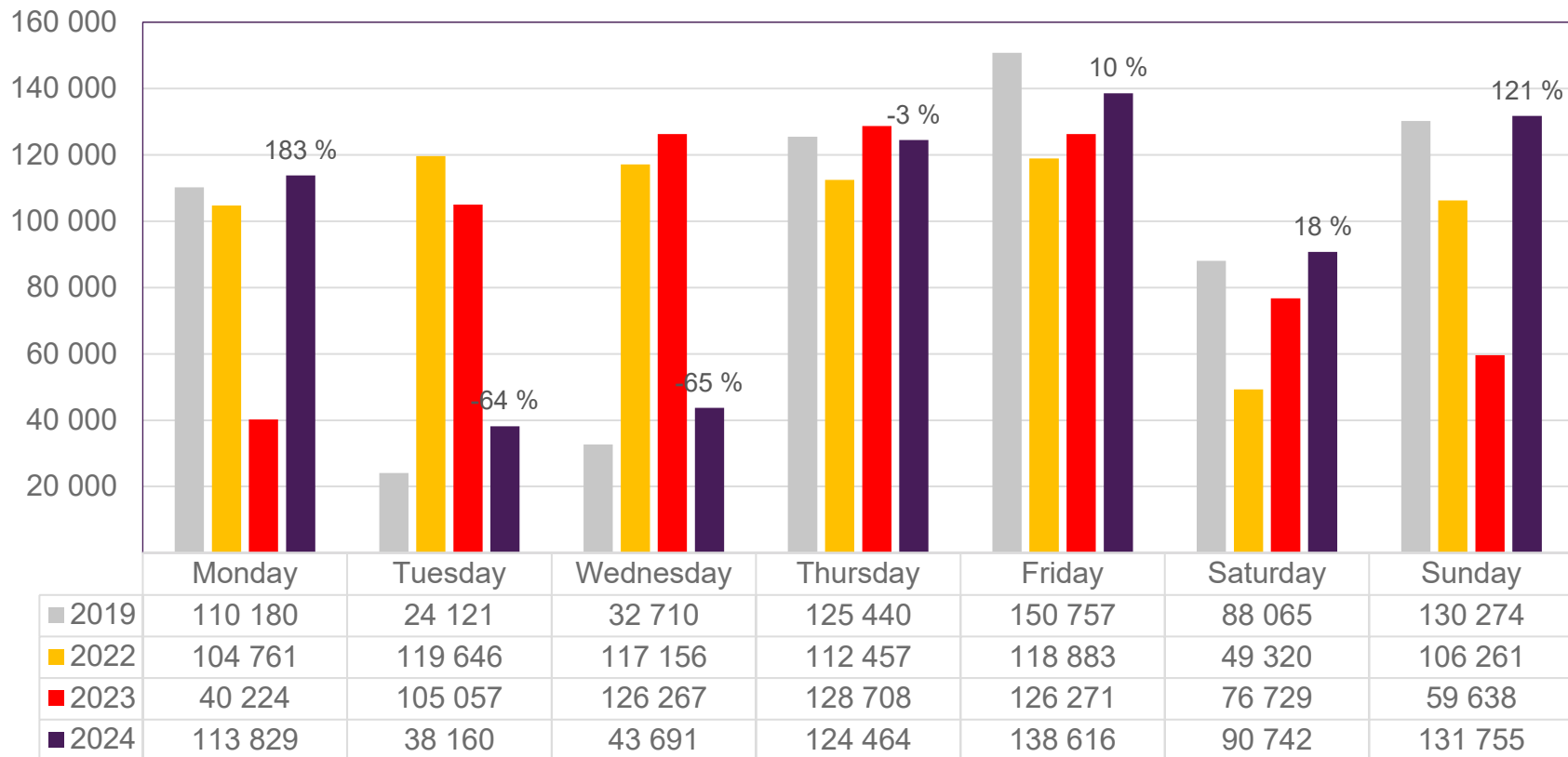
Preliminary figures

- The figures for the previous week are preliminary. It takes some time for all passenger numbers to be reported, so the figures for the previous week may be lower than the final figures.
- The figures are taken from SIA, Avinor's traffic database.

Top 10 airports, total week 52

Airport	2019	2022	2023	2024	2024 vs. 2023	
					Change	Change %
Oslo/Gardermoen	369 703	378 966	345 868	362 409	16 541	5 %
Bergen/Flesland	74 448	88 385	82 634	78 763	-3 871	-5 %
Tromsø/Langnes	34 487	48 269	48 038	56 277	8 239	17 %
Stavanger/Sola	46 218	51 059	49 192	46 934	-2 258	-5 %
Trondheim/Værnes	47 040	55 585	45 307	45 616	309	1 %
Bodø	19 374	24 121	19 073	18 642	-431	-2 %
Ålesund/Vigra	13 986	14 829	14 440	13 348	-1 092	-8 %
Harstad/Narvik/Evenes	9 597	12 643	11 057	11 479	422	4 %
Kristiansand/Kjevik	10 932	10 860	9 412	9 107	-305	-3 %
Bardufoss	3 817	3 359	2 744	2 295	-449	-16 %

Passengers Avinor total per day, week 52

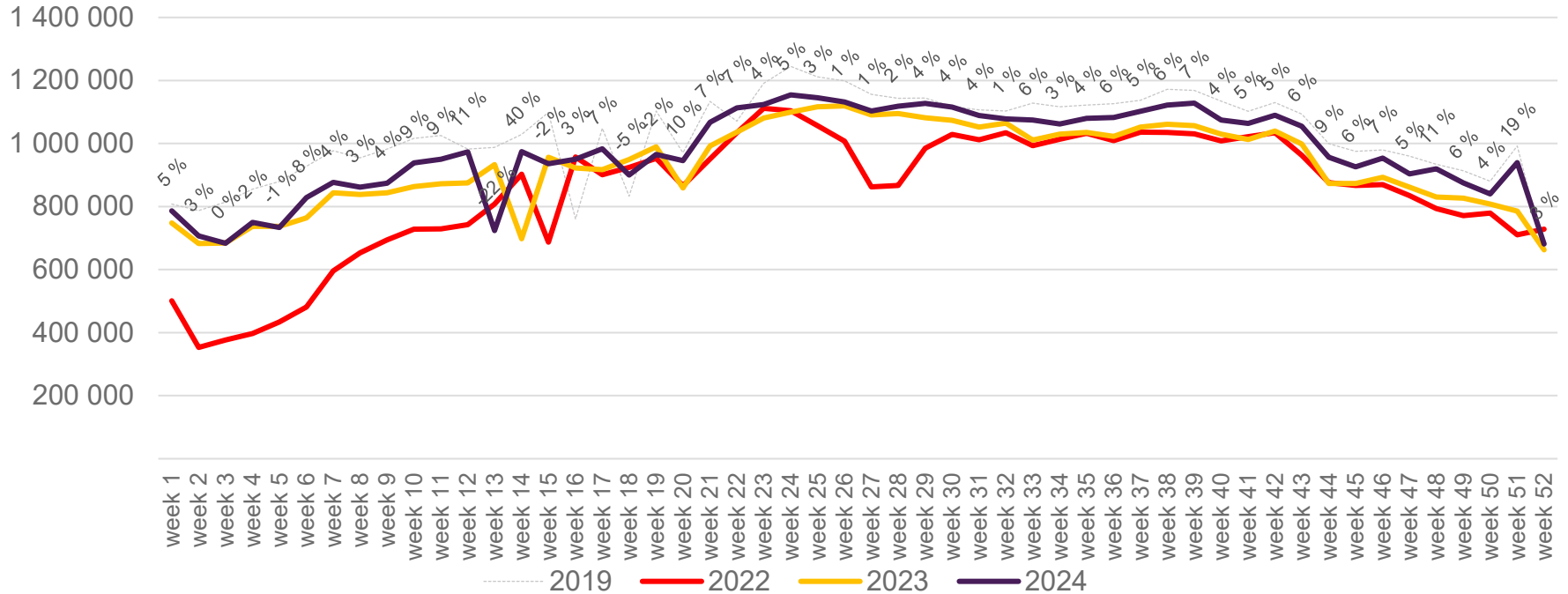


The change is measured against the same week in 2023

Source: SIA, Avinor Statistics

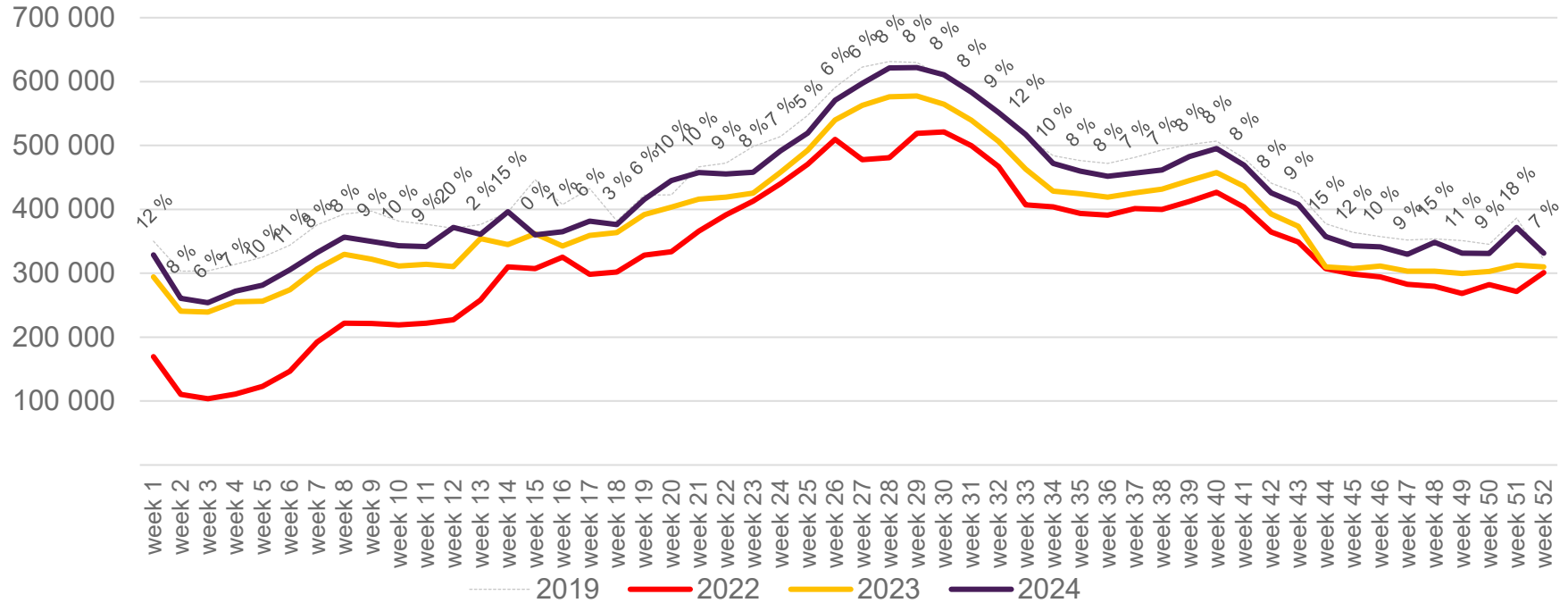
Passengers Avinor total per week

The change is measured against the same week in 2023



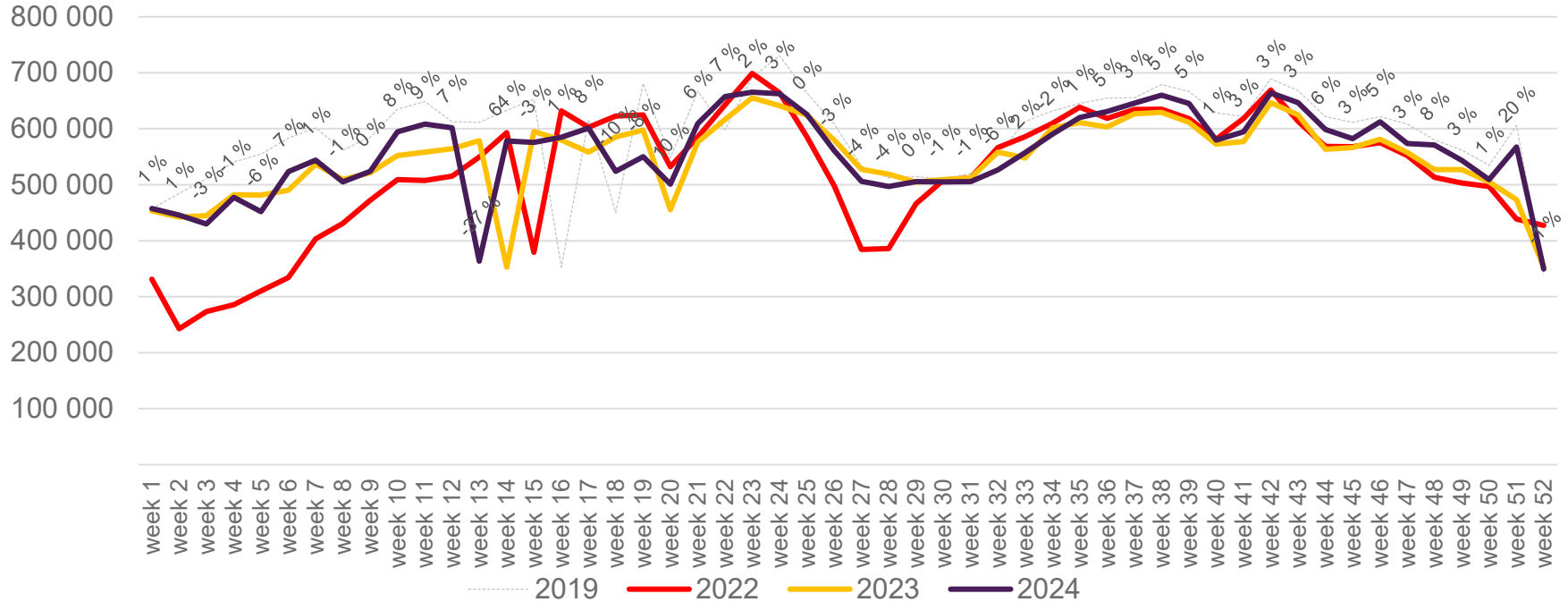
Passengers Avinor international per week

The change is measured against the same week in 2023

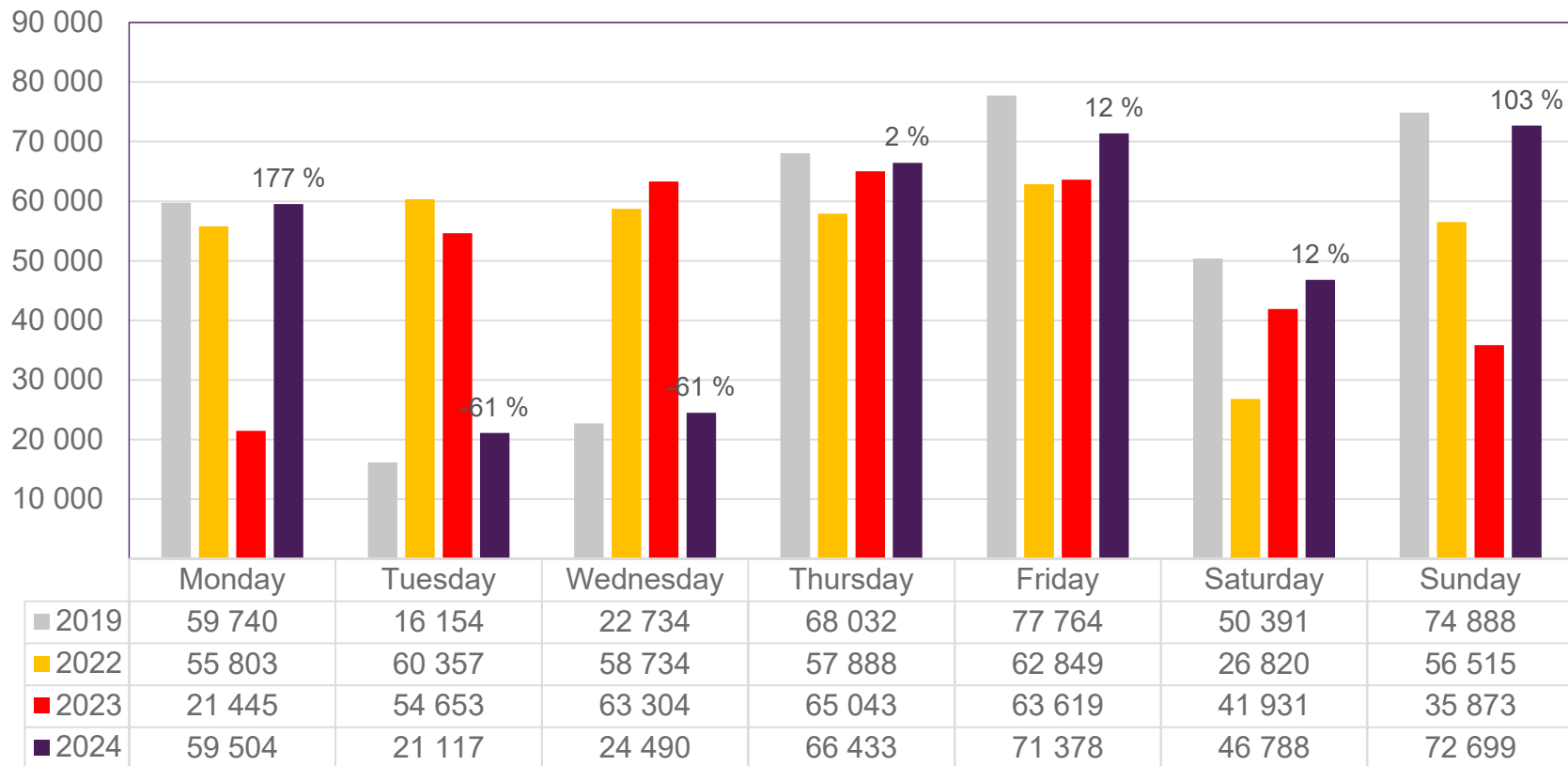


Passengers Avinor domestic per week

The change is measured against the same week in 2023



Passengers OSL total per day, week 52

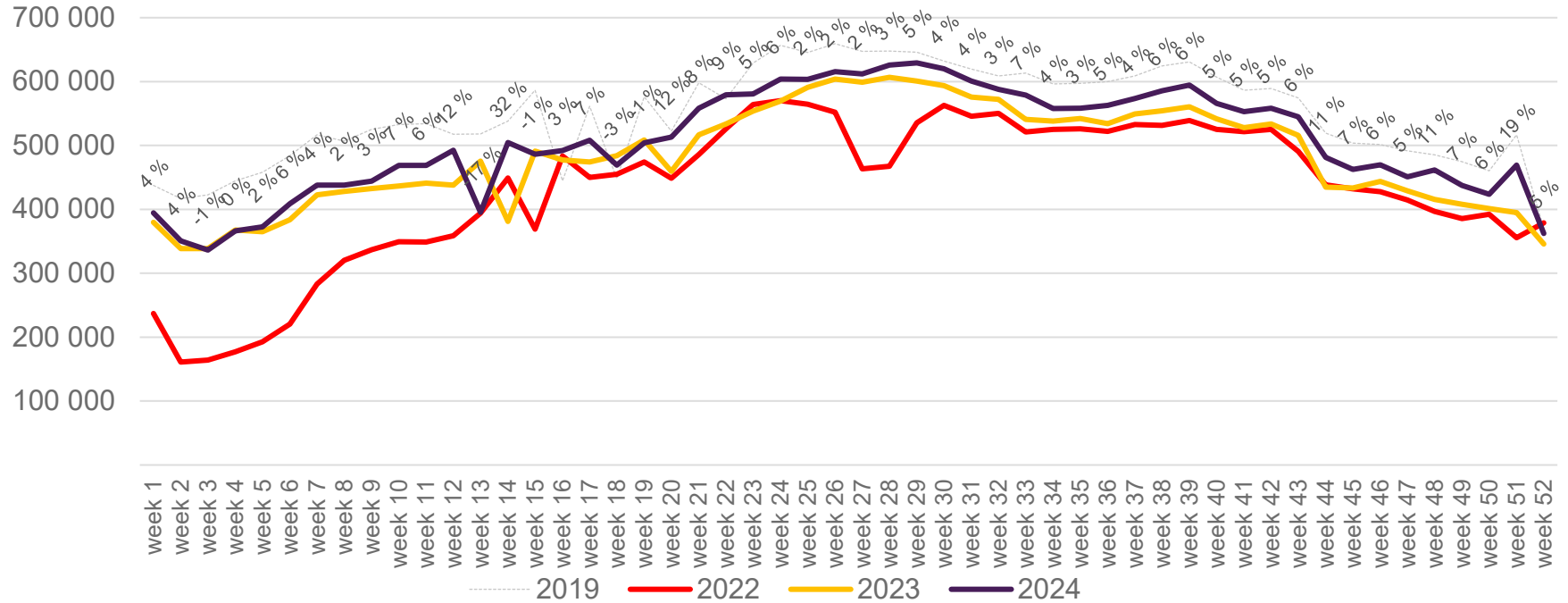


The change is measured against the same week in 2023

Source: SIA, Avinor Statistics

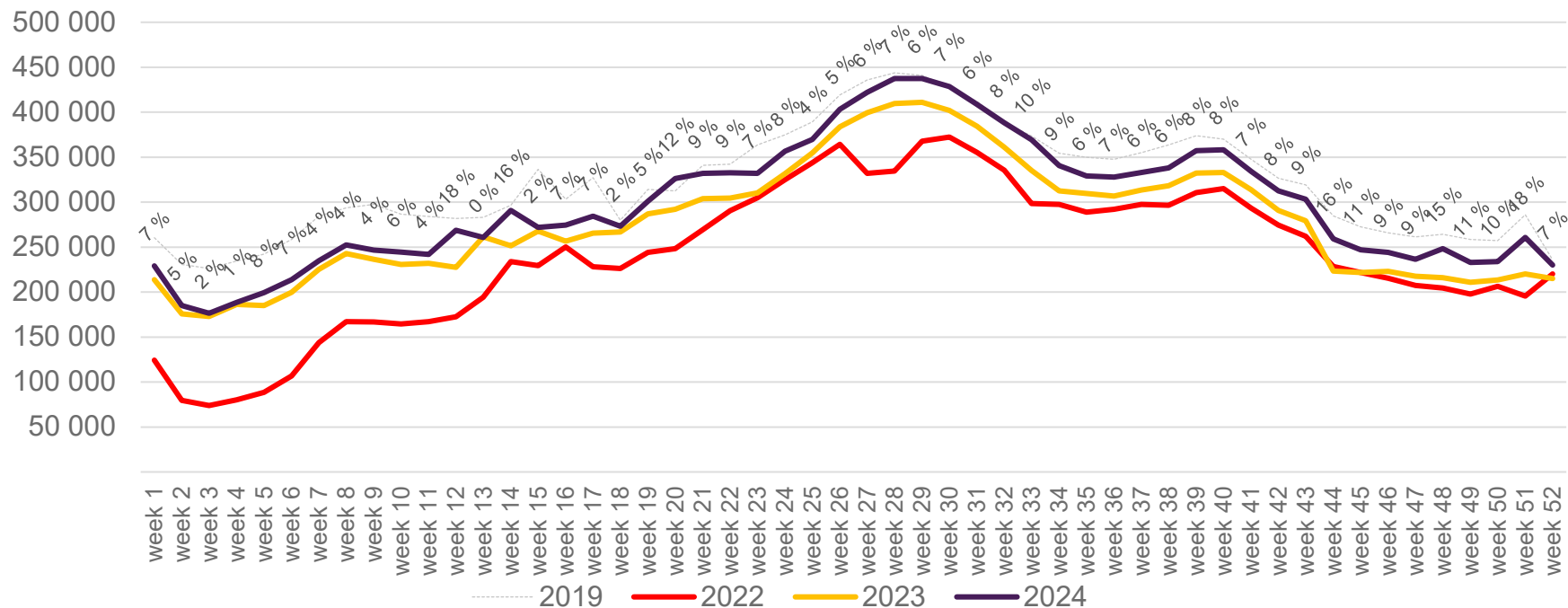
Passengers OSL total per week

The change is measured against the same week in 2023



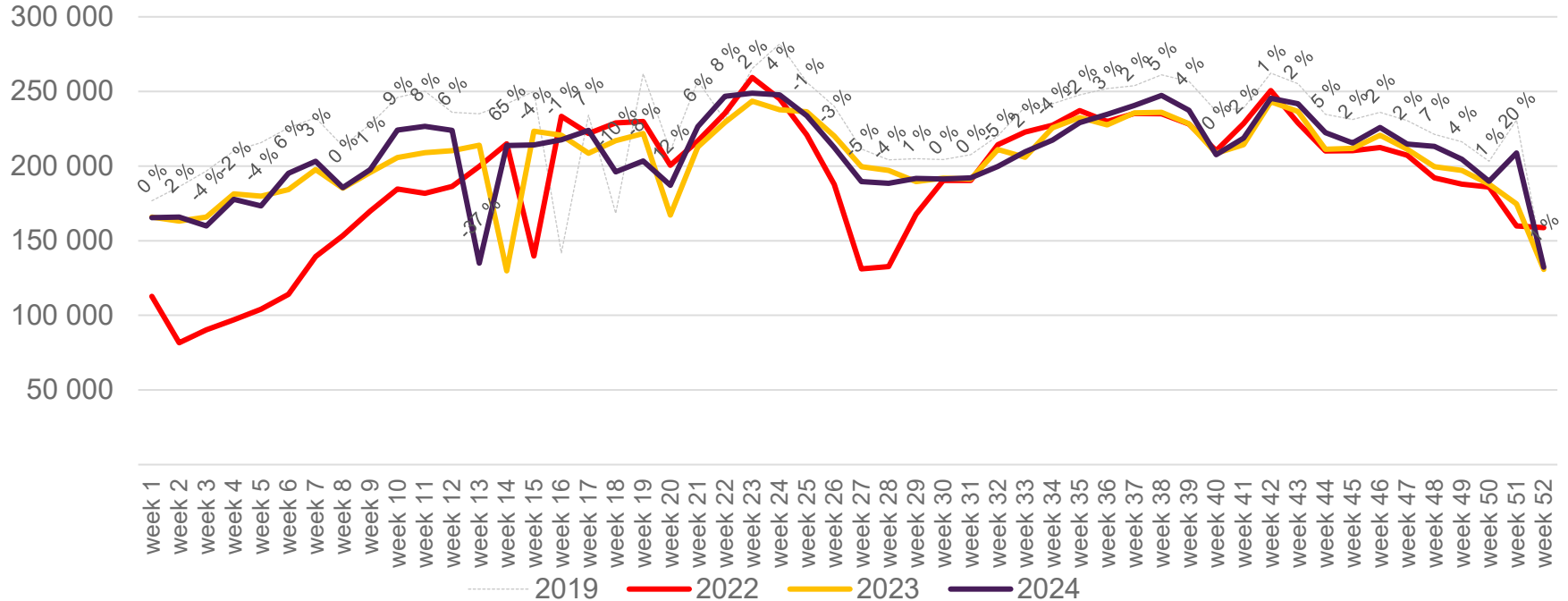
Passengers OSL international per week

The change is measured against the same week in 2023

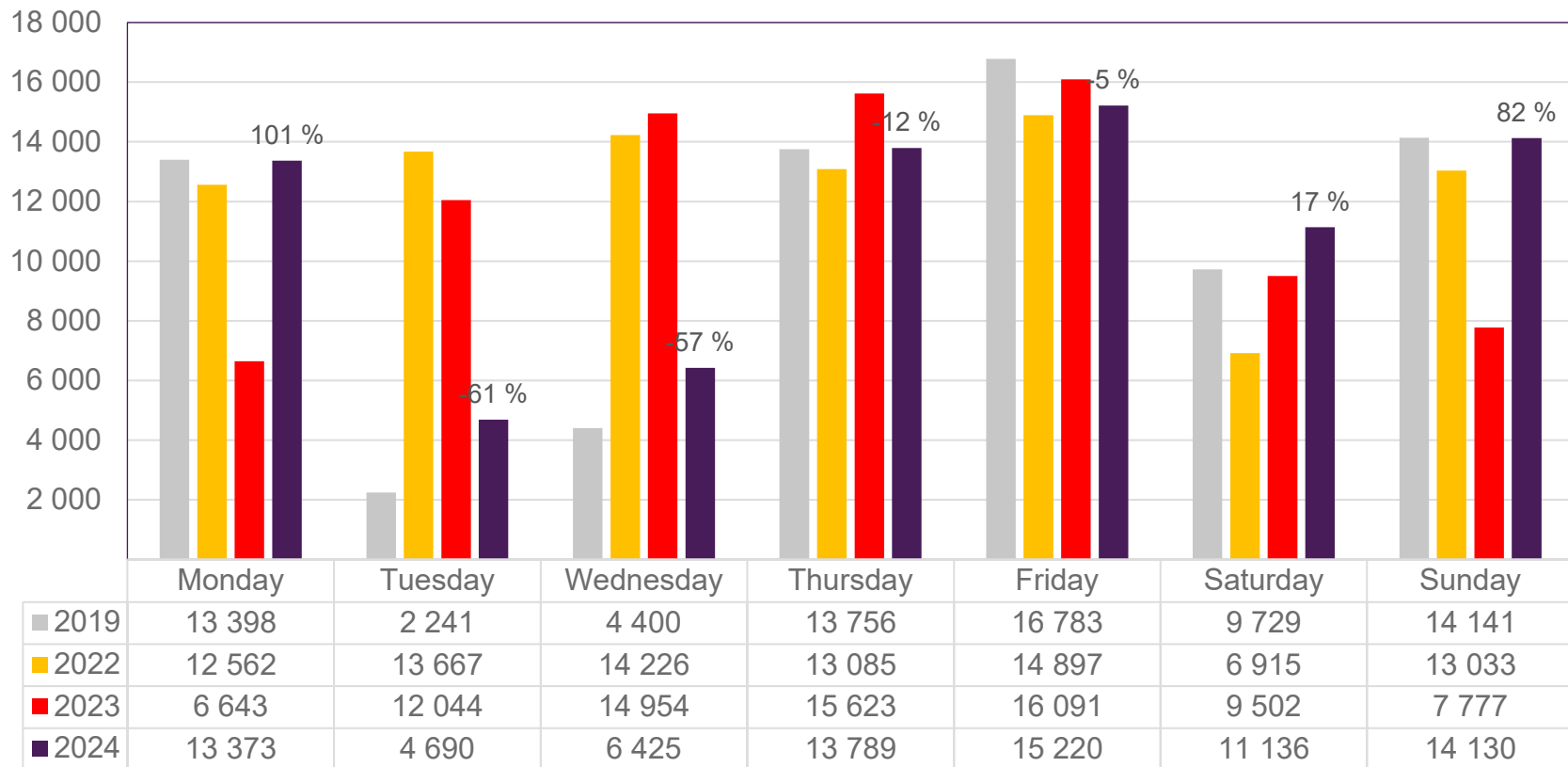


Passengers OSL domestic per week

The change is measured against the same week in 2023



Passengers BGO total per day, week 52

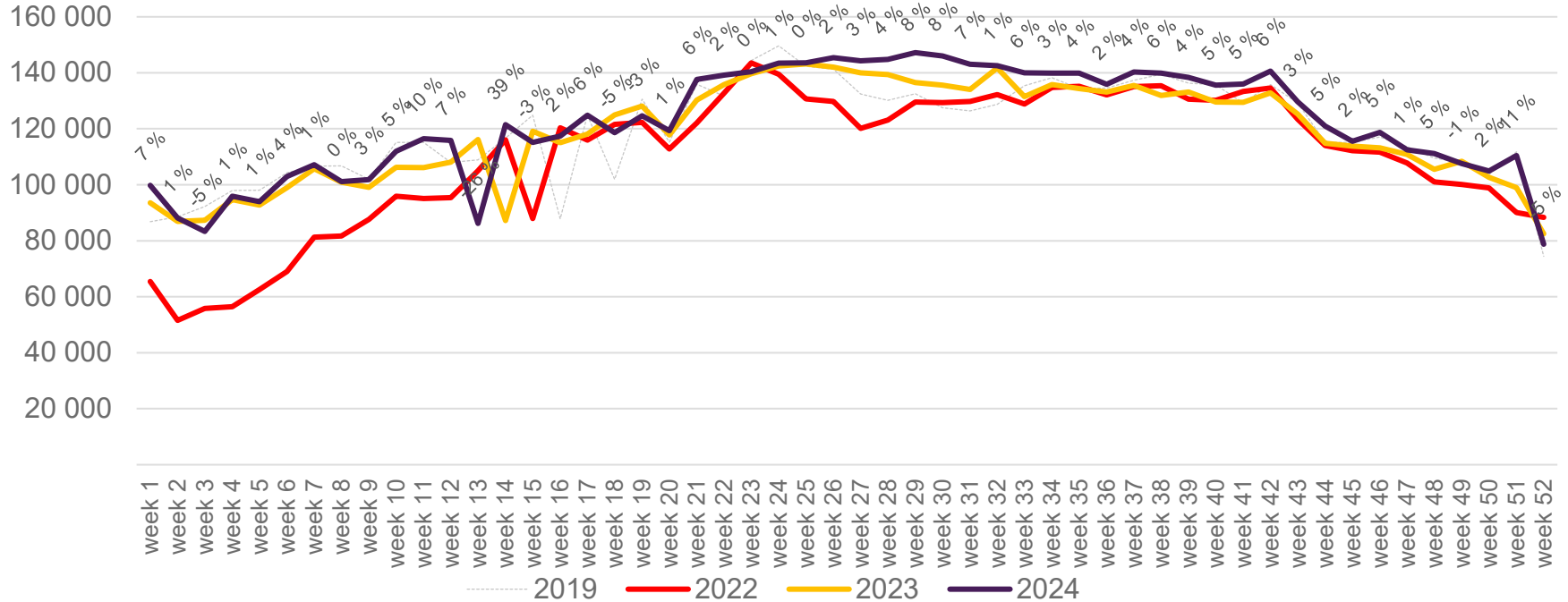


The change is measured against the same week in 2023

Source: SIA, Avinor Statistics

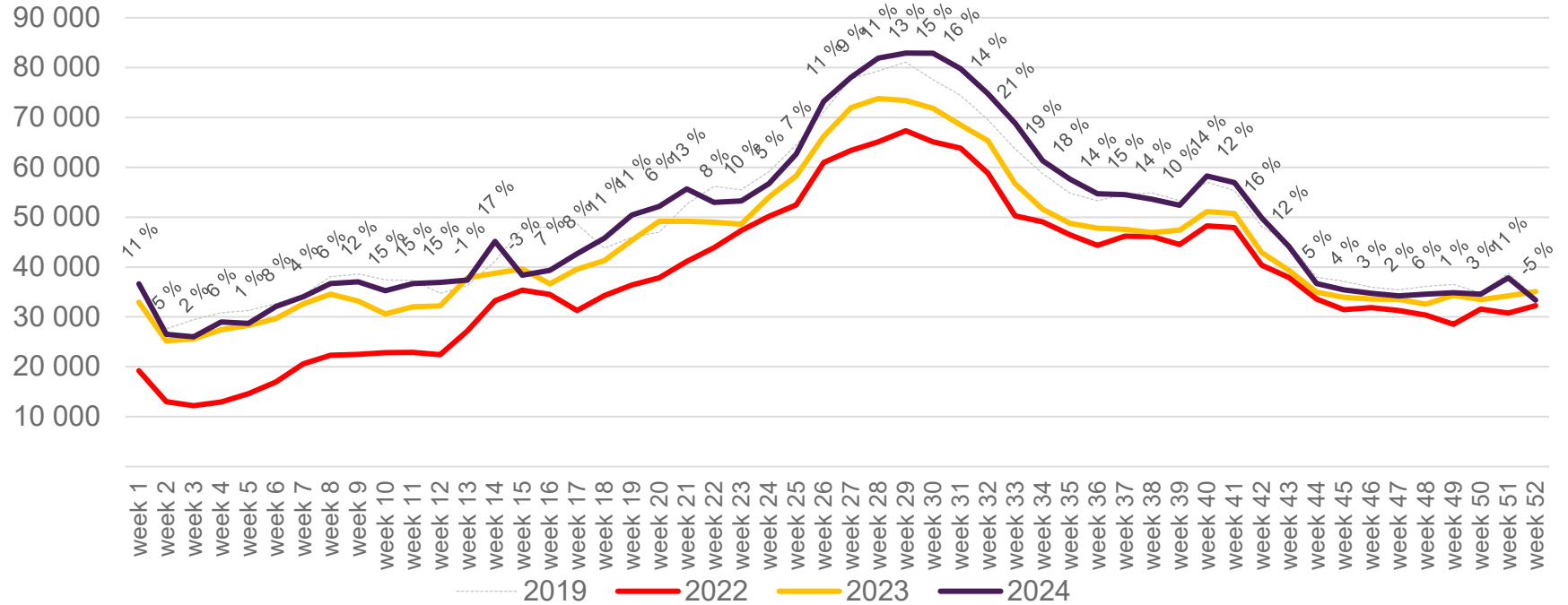
Passengers BGO total per week

The change is measured against the same week in 2023



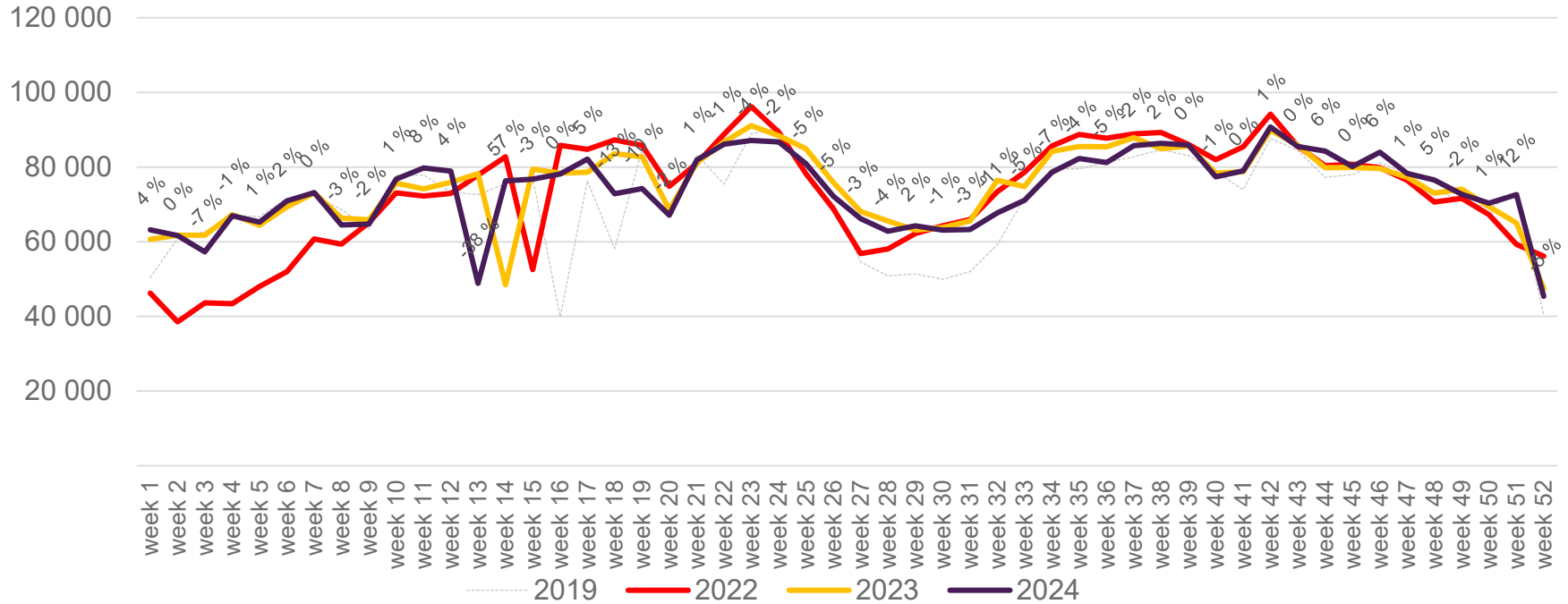
Passengers BGO international per week

The change is measured against the same week in 2023

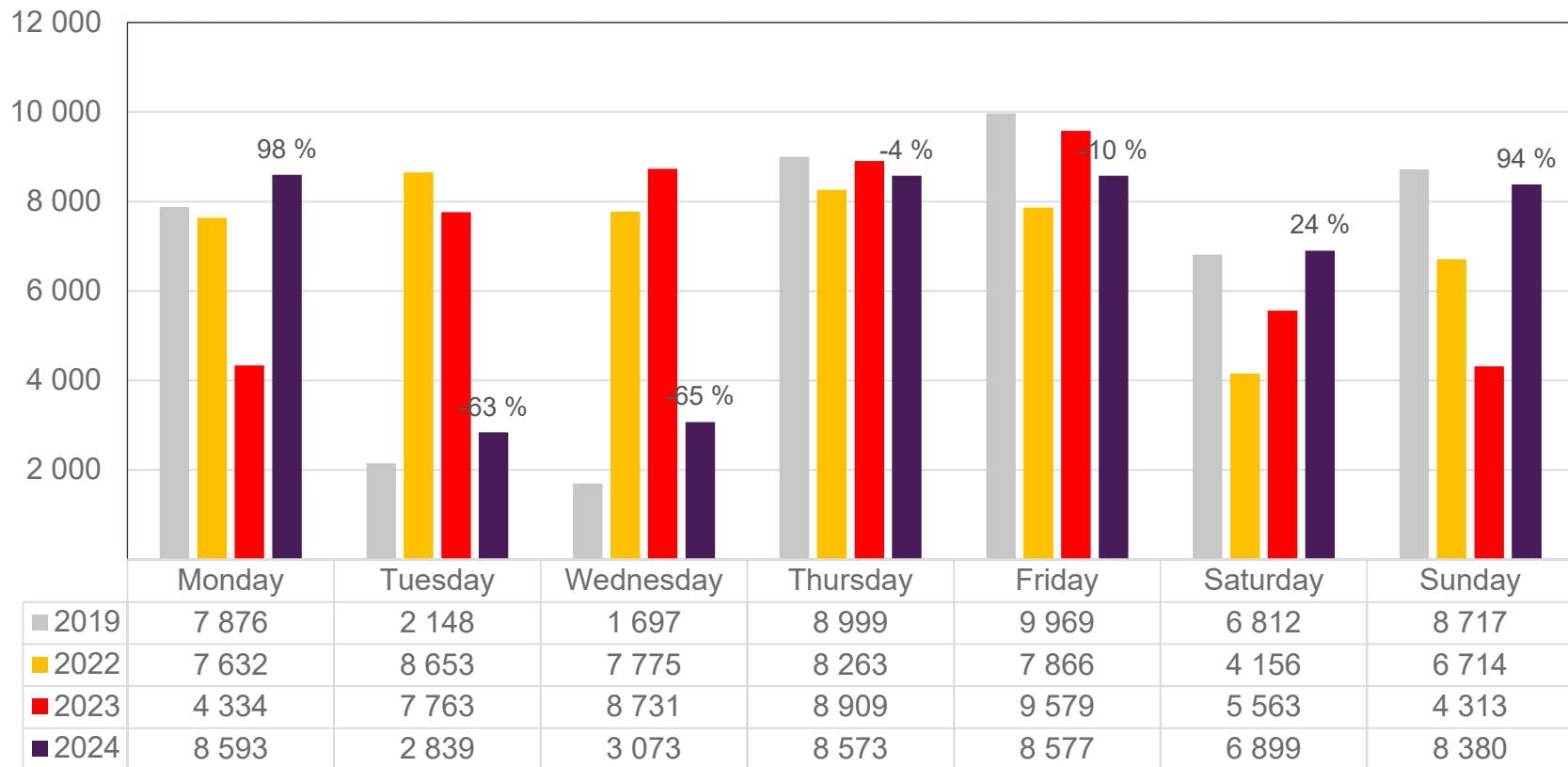


Passengers BGO domestic per week

The change is measured against the same week in 2023



Passengers SVG total per day, week 52

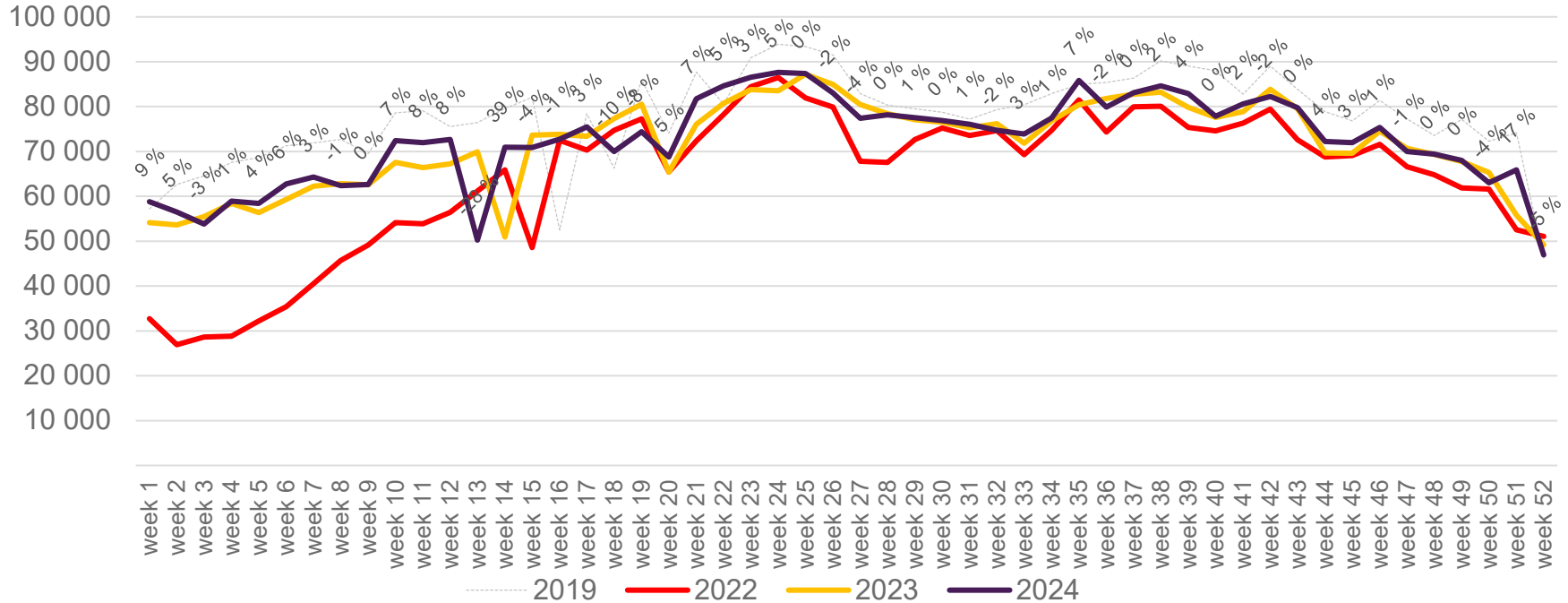


The change is measured against the same week in 2023

Source: SIA, Avinor Statistics

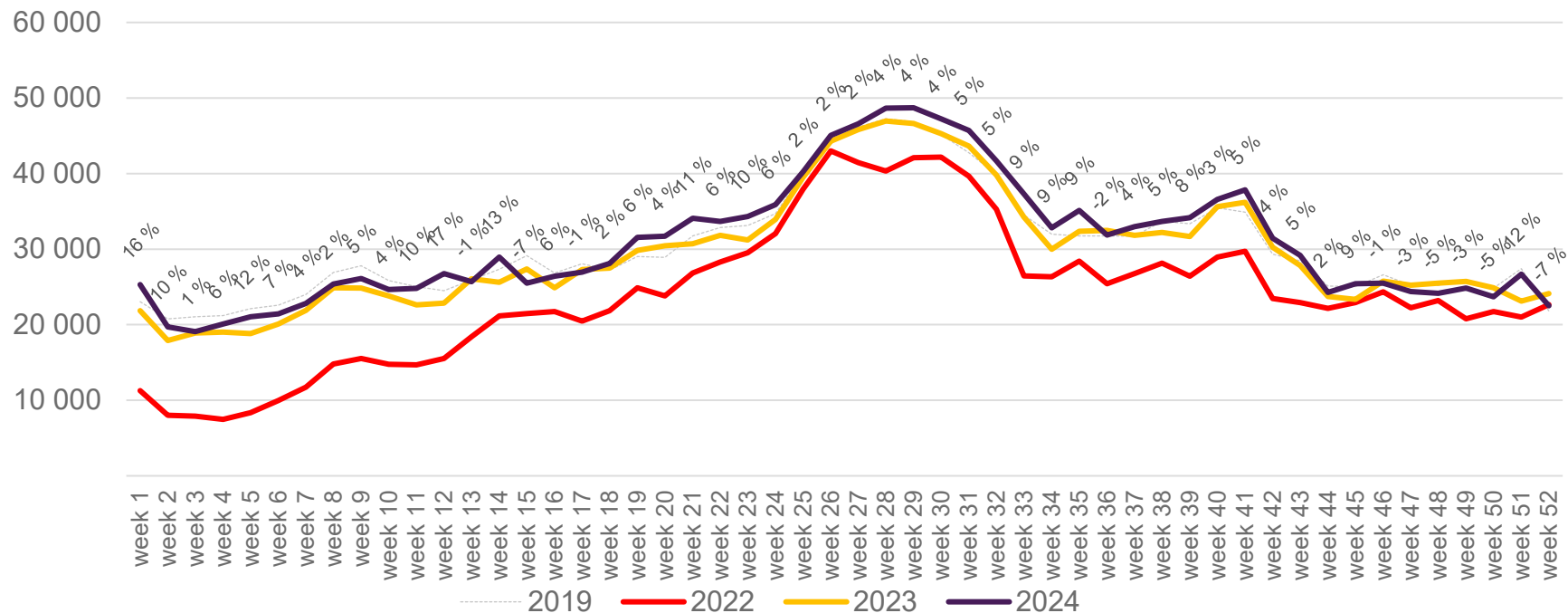
Passengers SVG total per week

The change is measured against the same week in 2023



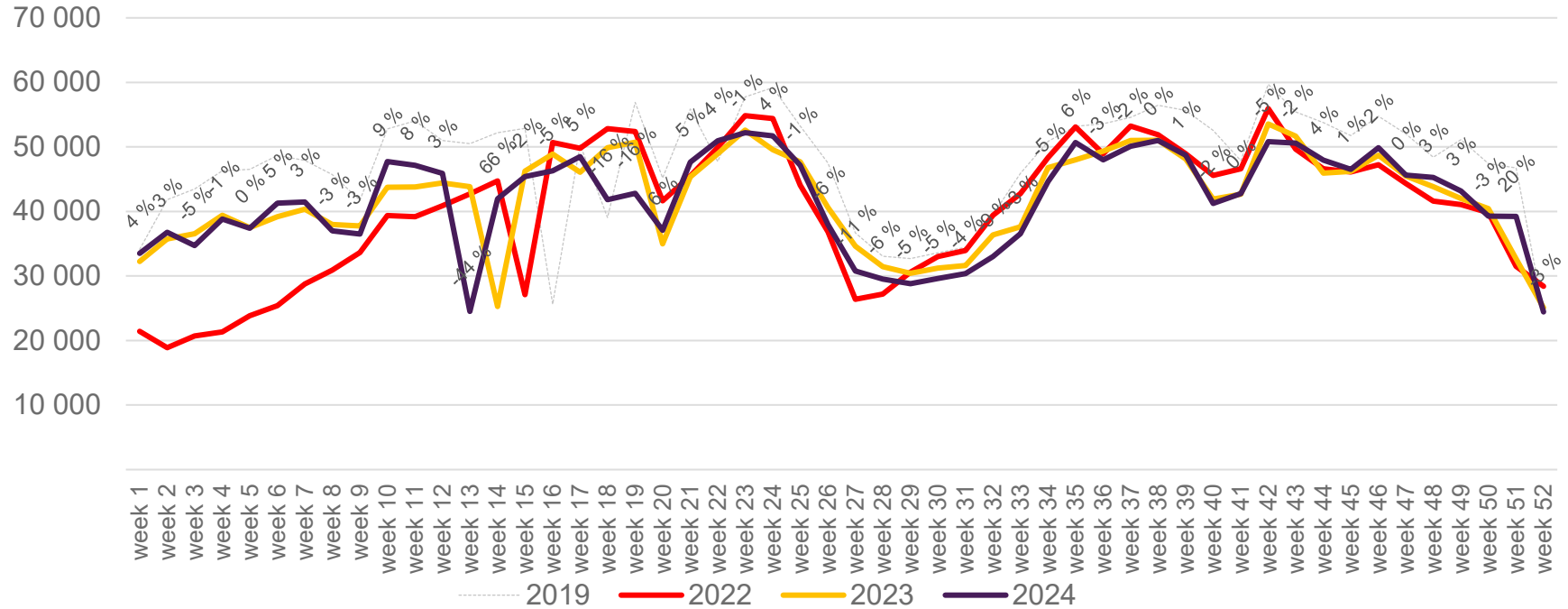
Passengers SVG international per week

The change is measured against the same week in 2023

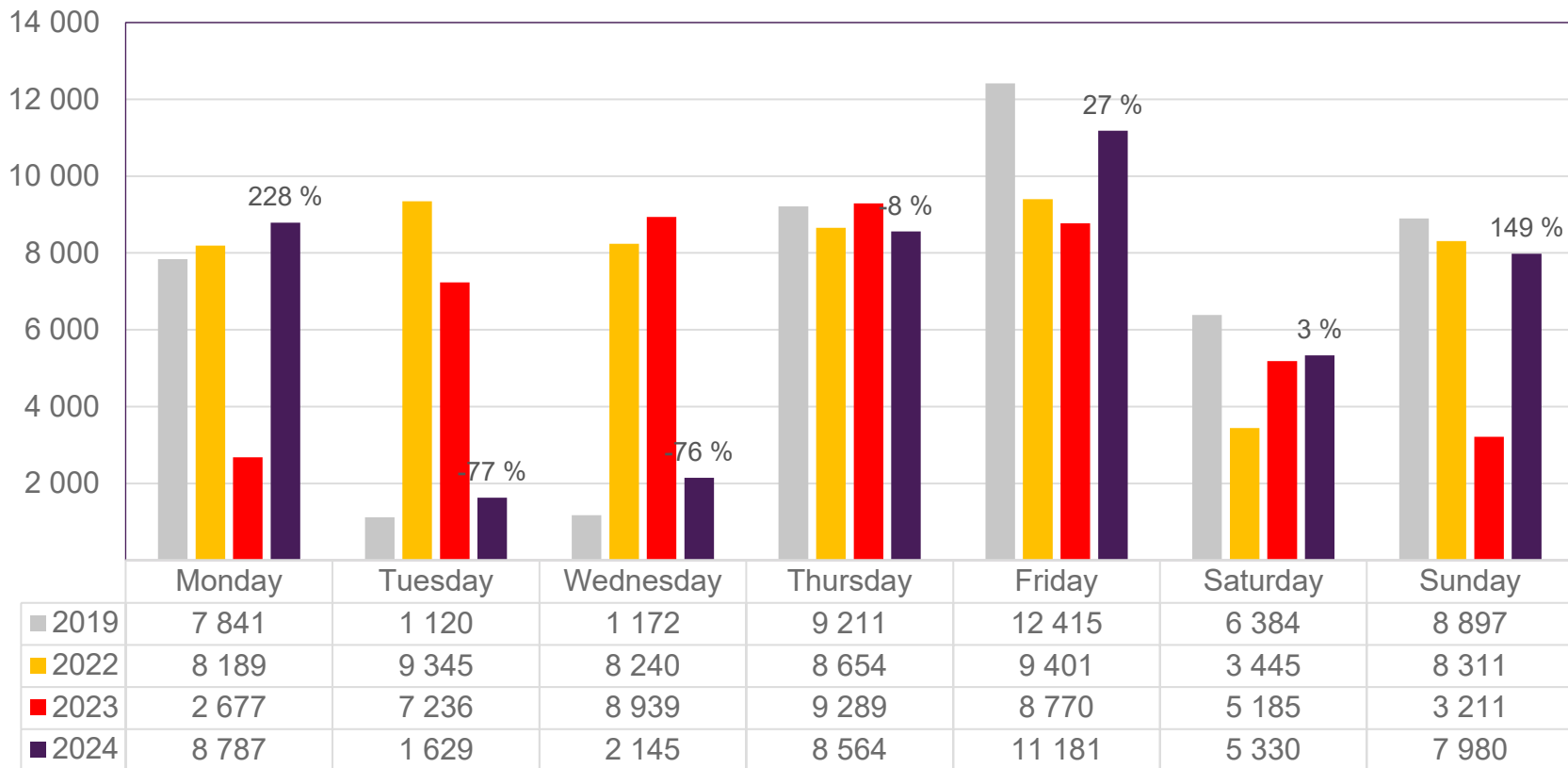


Passengers SVG domestic per week

The change is measured against the same week in 2023



Passengers TRD total per day, week 52

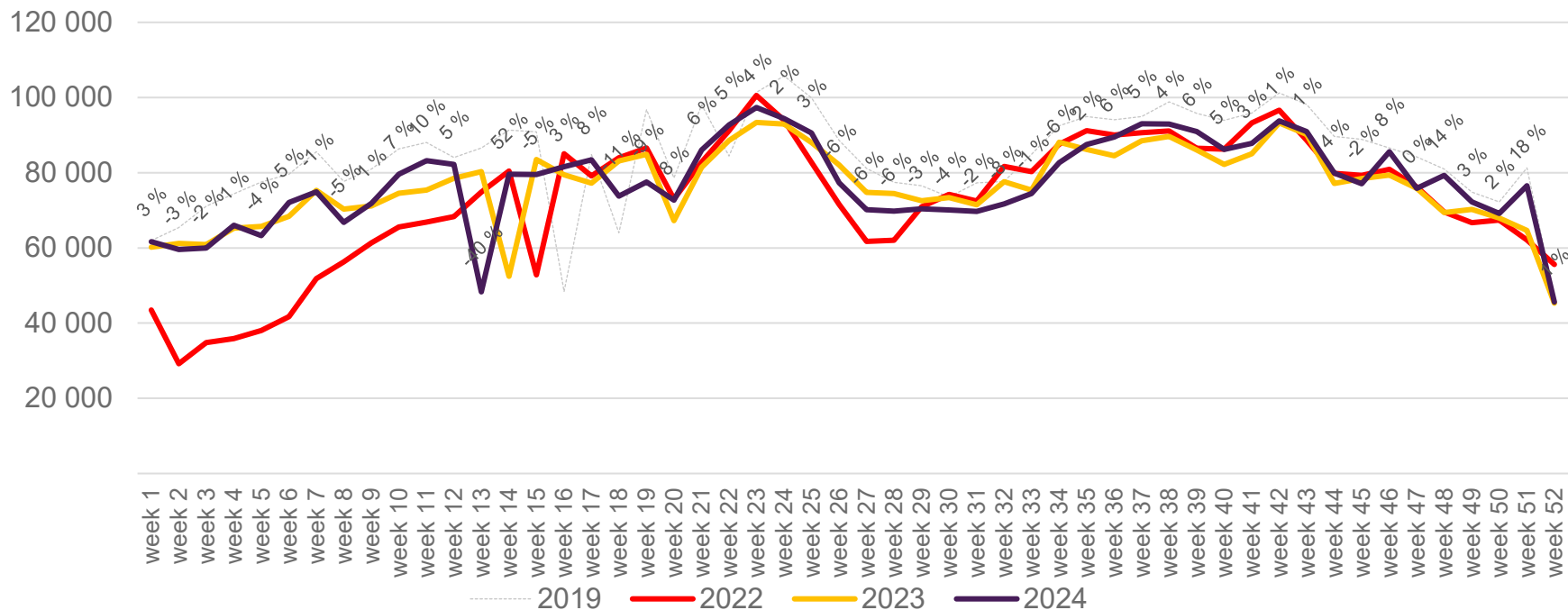


The change is measured against the same week in 2023

Source: SIA, Avinor Statistics

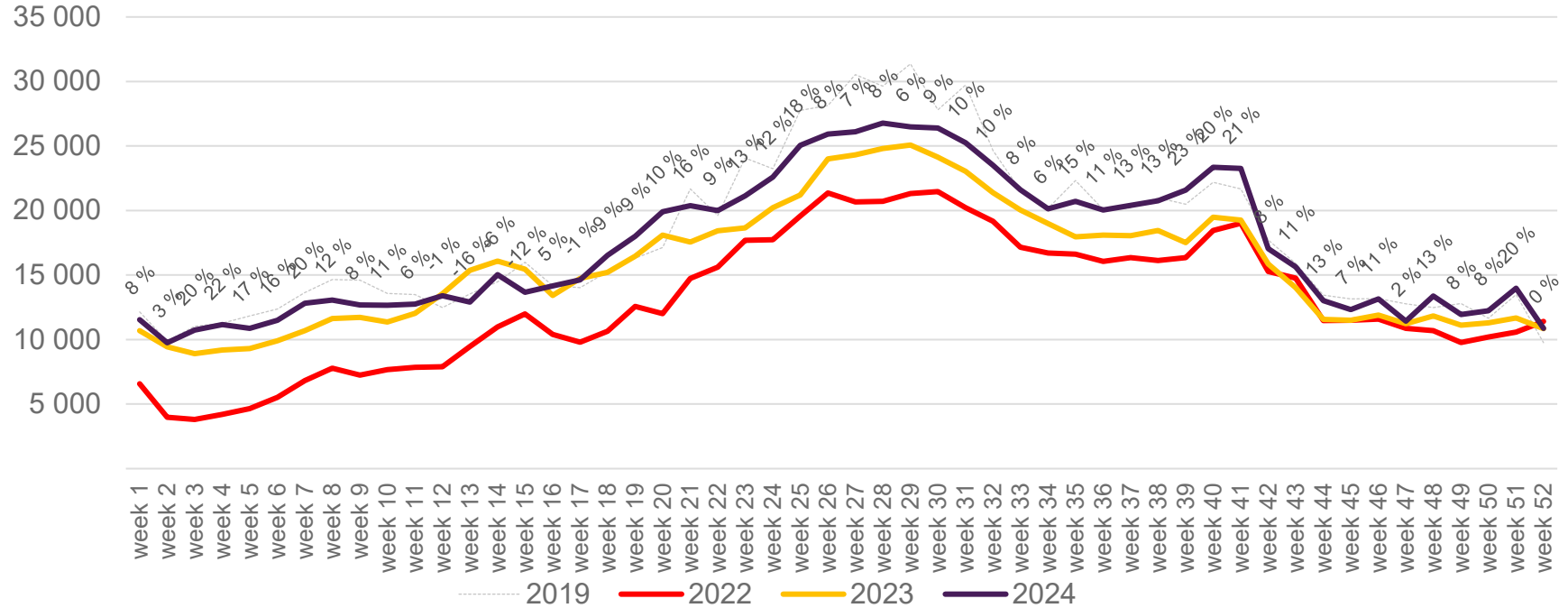
Passengers TRD total per week

The change is measured against the same week in 2023



Passengers TRD international per week

The change is measured against the same week in 2023



Passengers TRD domestic per week

The change is measured against the same week in 2023

