



Passenger numbers per week

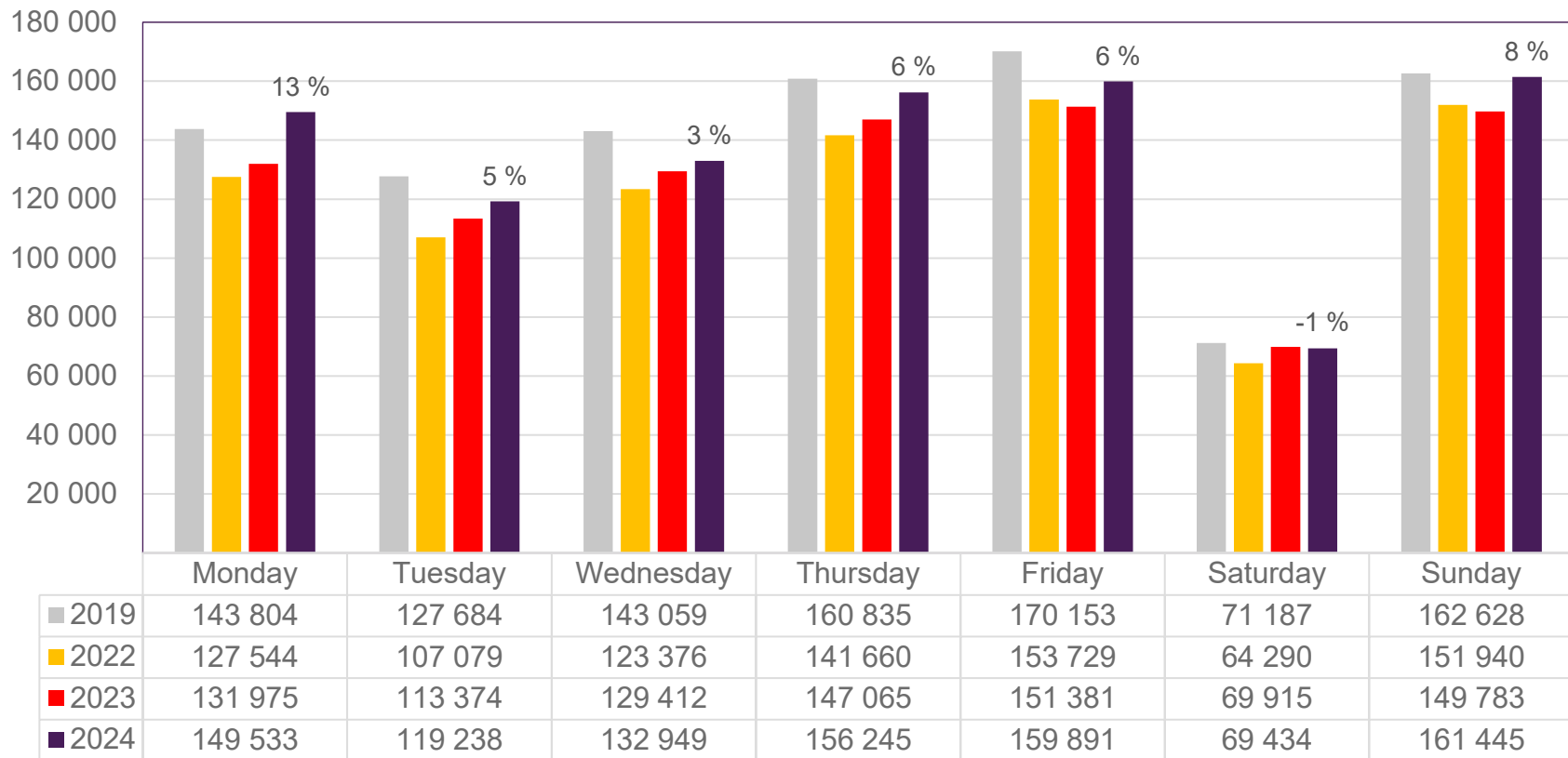
Preliminary figures

- The figures for the previous week are preliminary. It takes some time for all passenger numbers to be reported, so the figures for the previous week may be lower than the final figures.
- The figures are taken from SIA, Avinor's traffic database.

Top 10 airports, total week 46

Airport	2019	2022	2023	2024	2024 vs. 2023	
					Change	Change %
Oslo/Gardermoen	501 656	427 657	443 554	467 805	24 251	5 %
Bergen/Flesland	117 090	111 672	113 207	118 035	4 828	4 %
Trondheim/Værnes	86 561	80 885	79 360	84 784	5 424	7 %
Stavanger/Sola	81 356	71 599	74 493	75 200	707	1 %
Tromsø/Langnes	43 217	42 607	46 885	56 918	10 033	21 %
Bodø	31 855	30 743	31 086	35 393	4 307	14 %
Ålesund/Vigra	21 900	18 490	19 059	19 102	43	0 %
Kristiansand/Kjevik	20 109	15 282	16 544	15 408	-1 136	-7 %
Harstad/Narvik/Evenes	12 639	12 576	13 039	13 137	98	1 %
Bardufoss	4 750	4 042	3 664	4 405	741	20 %

Passengers Avinor total per day, week 46

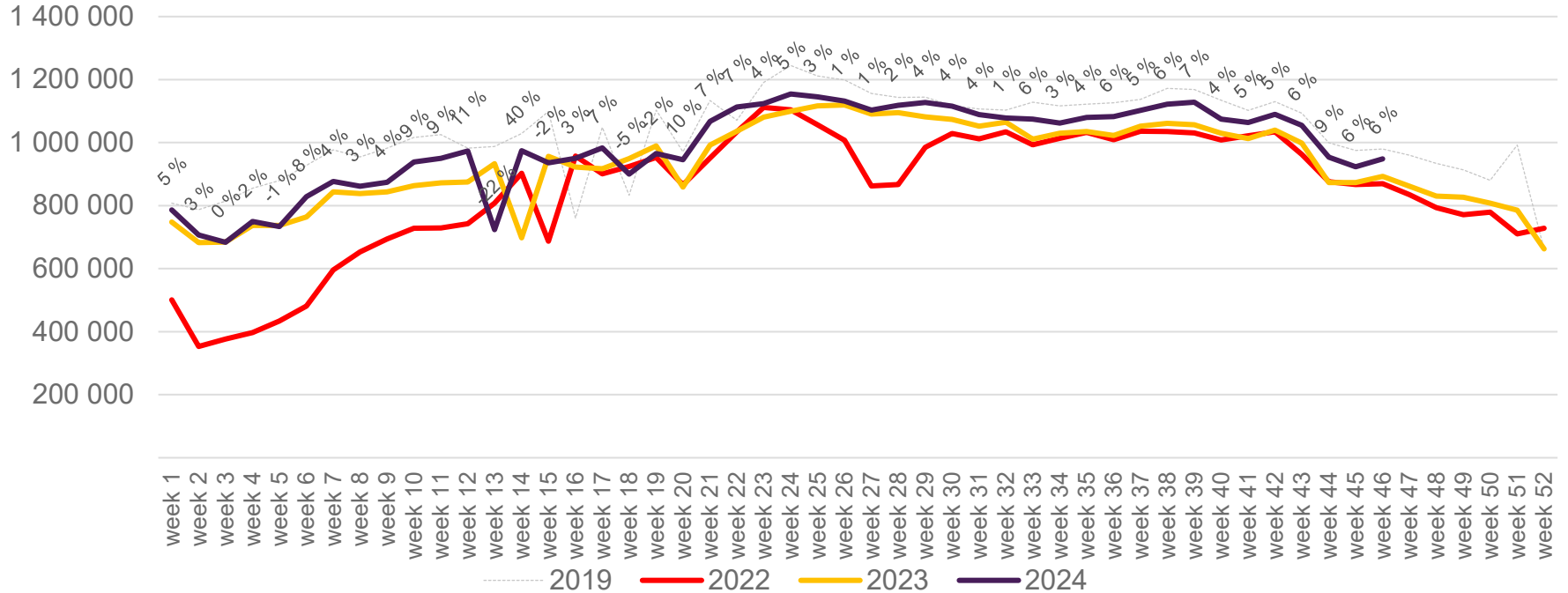


The change is measured against the same week in 2023

Source: SIA, Avinor Statistics

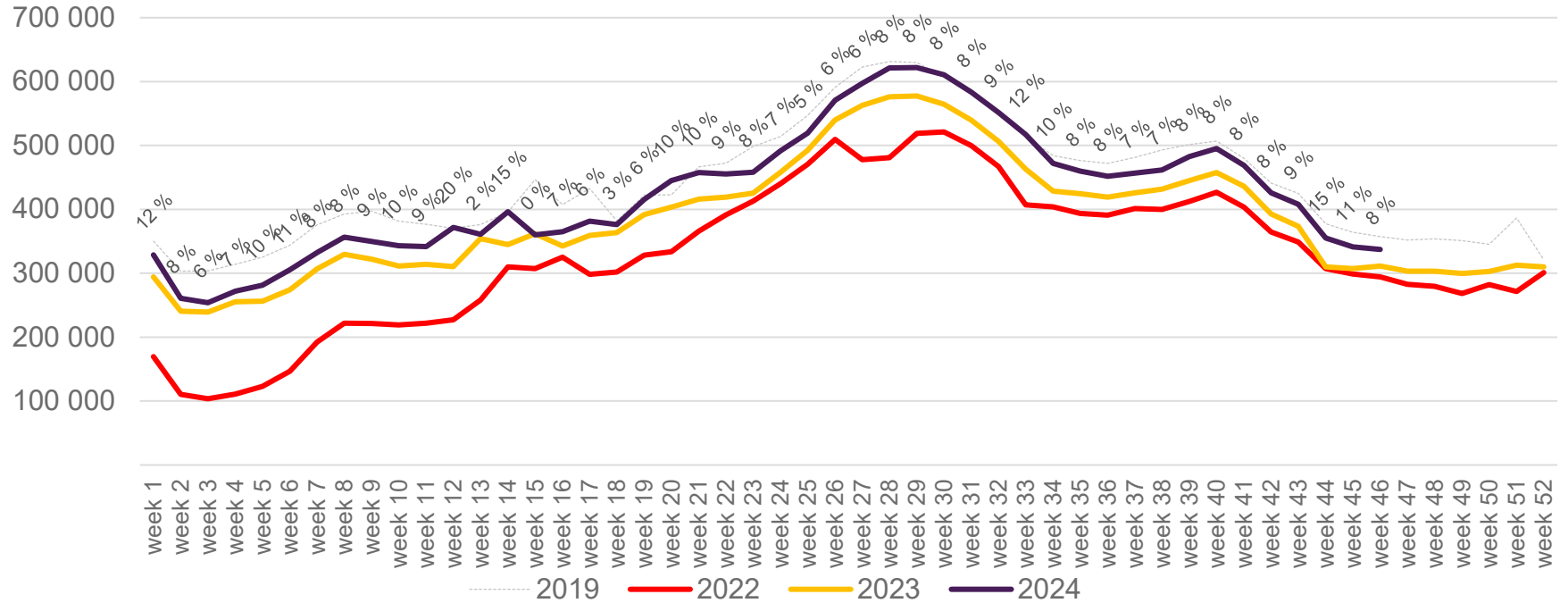
Passengers Avinor total per week

The change is measured against the same week in 2023



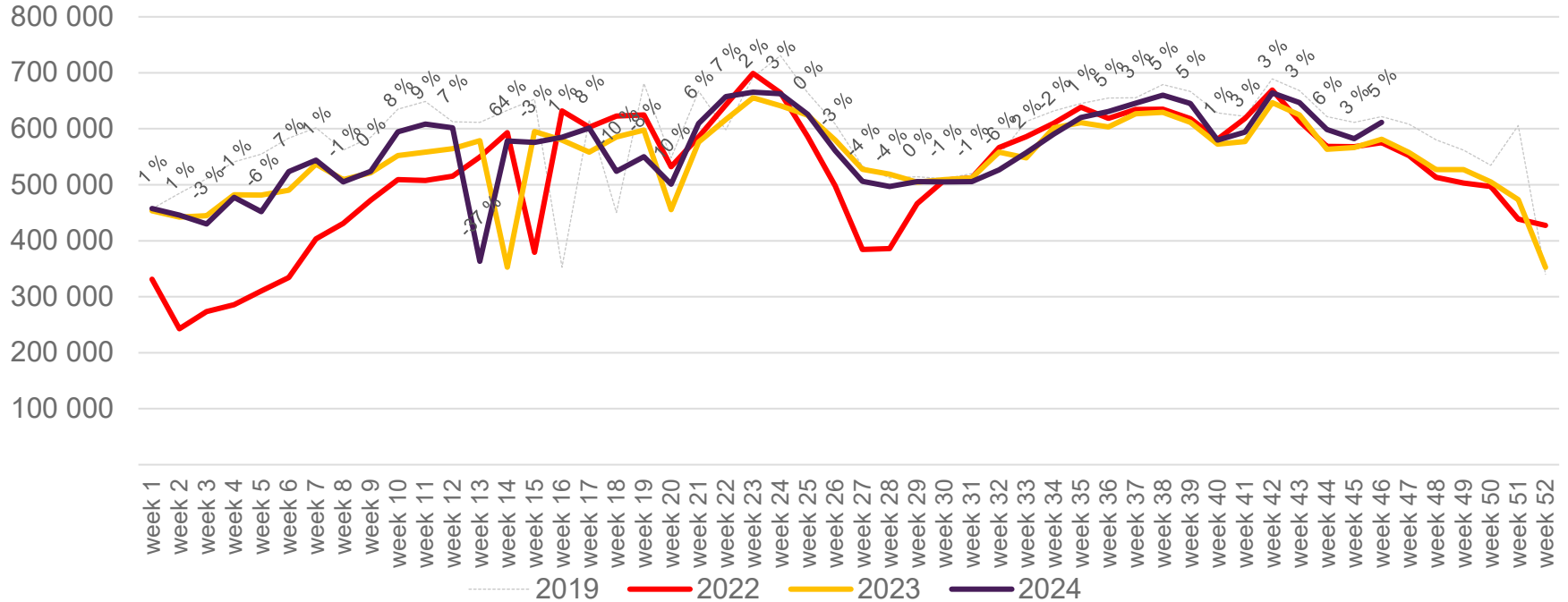
Passengers Avinor international per week

The change is measured against the same week in 2023

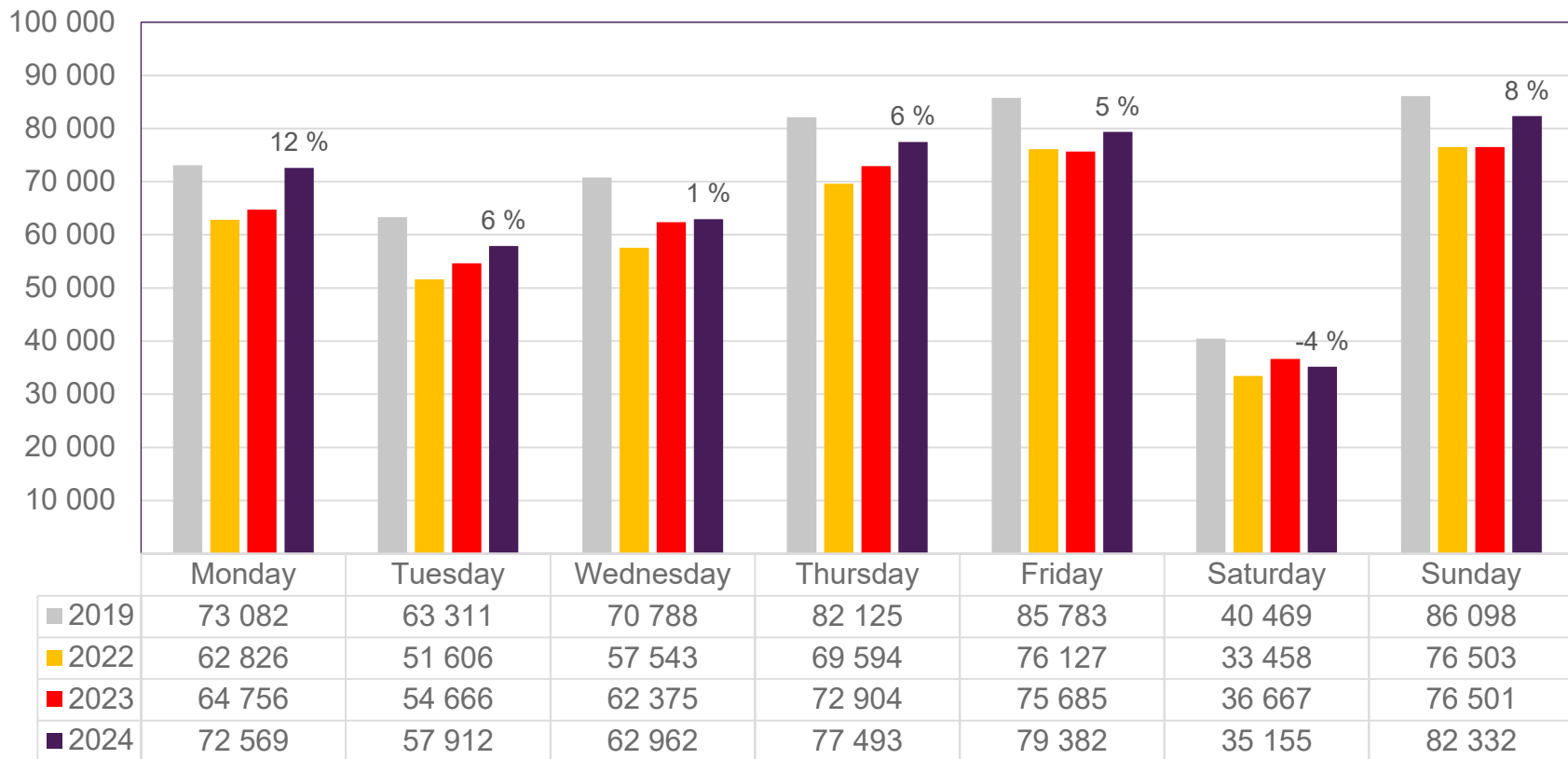


Passengers Avinor domestic per week

The change is measured against the same week in 2023



Passengers OSL total per day, week 46

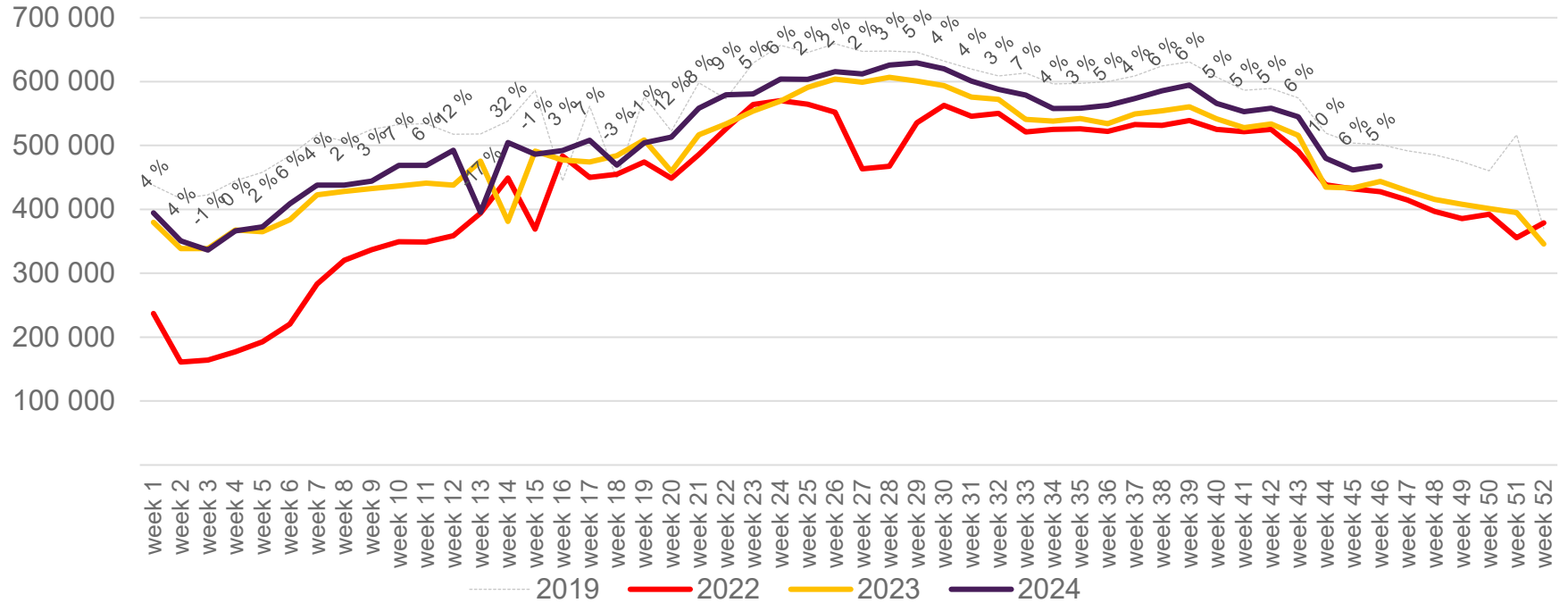


The change is measured against the same week in 2023

Source: SIA, Avinor Statistics

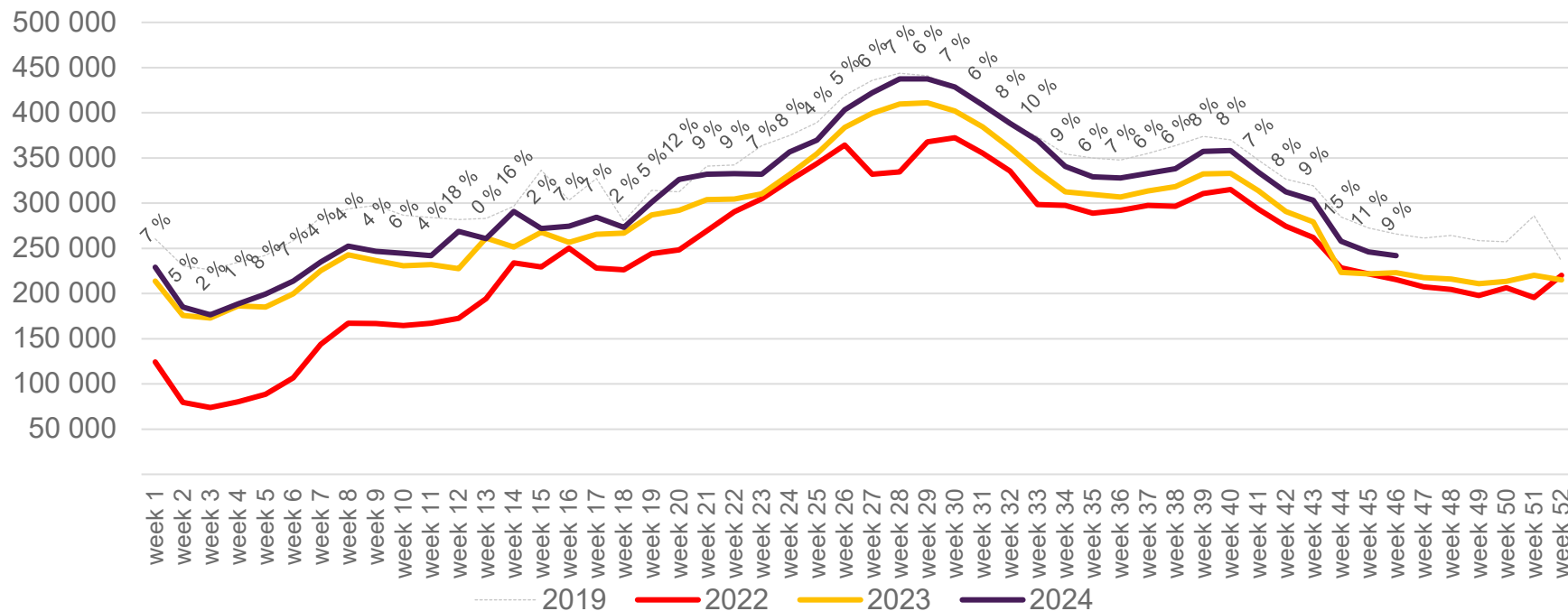
Passengers OSL total per week

The change is measured against the same week in 2023



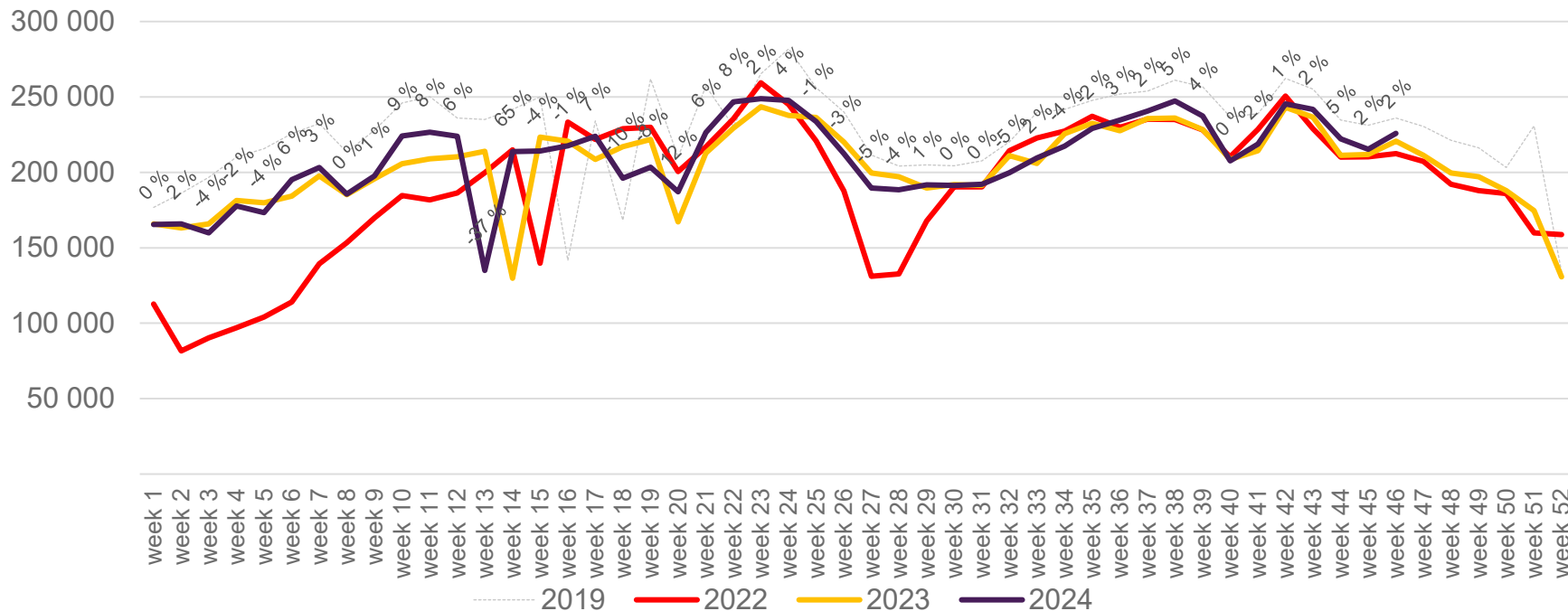
Passengers OSL international per week

The change is measured against the same week in 2023

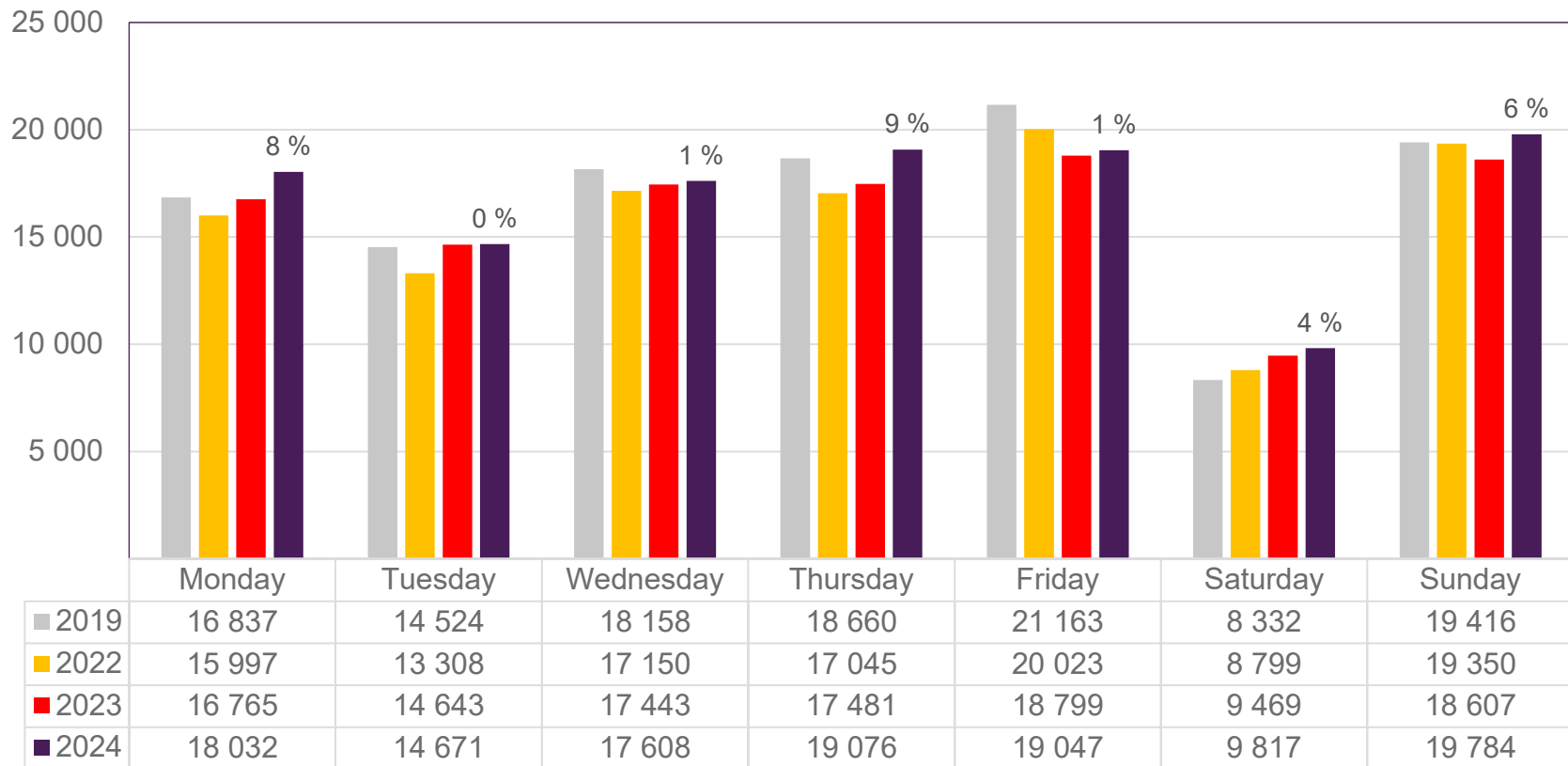


Passengers OSL domestic per week

The change is measured against the same week in 2023



Passengers BGO total per day, week 46

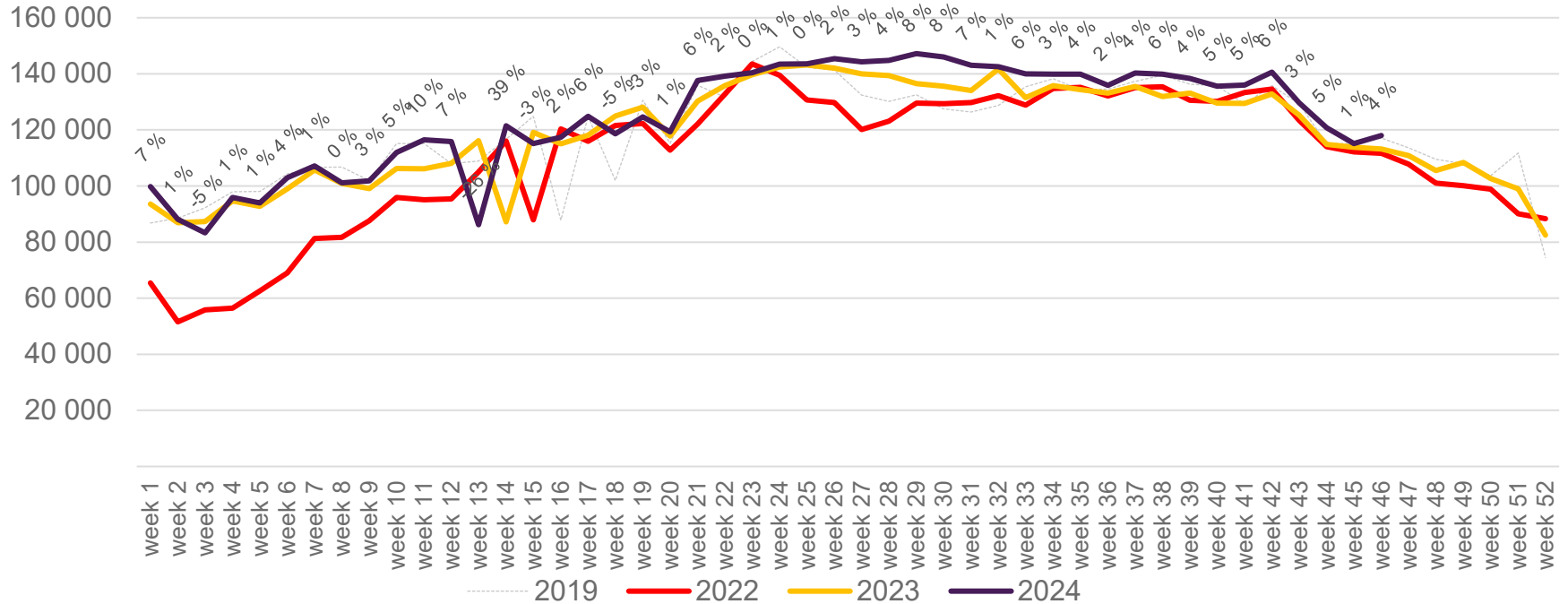


The change is measured against the same week in 2023

Source: SIA, Avinor Statistics

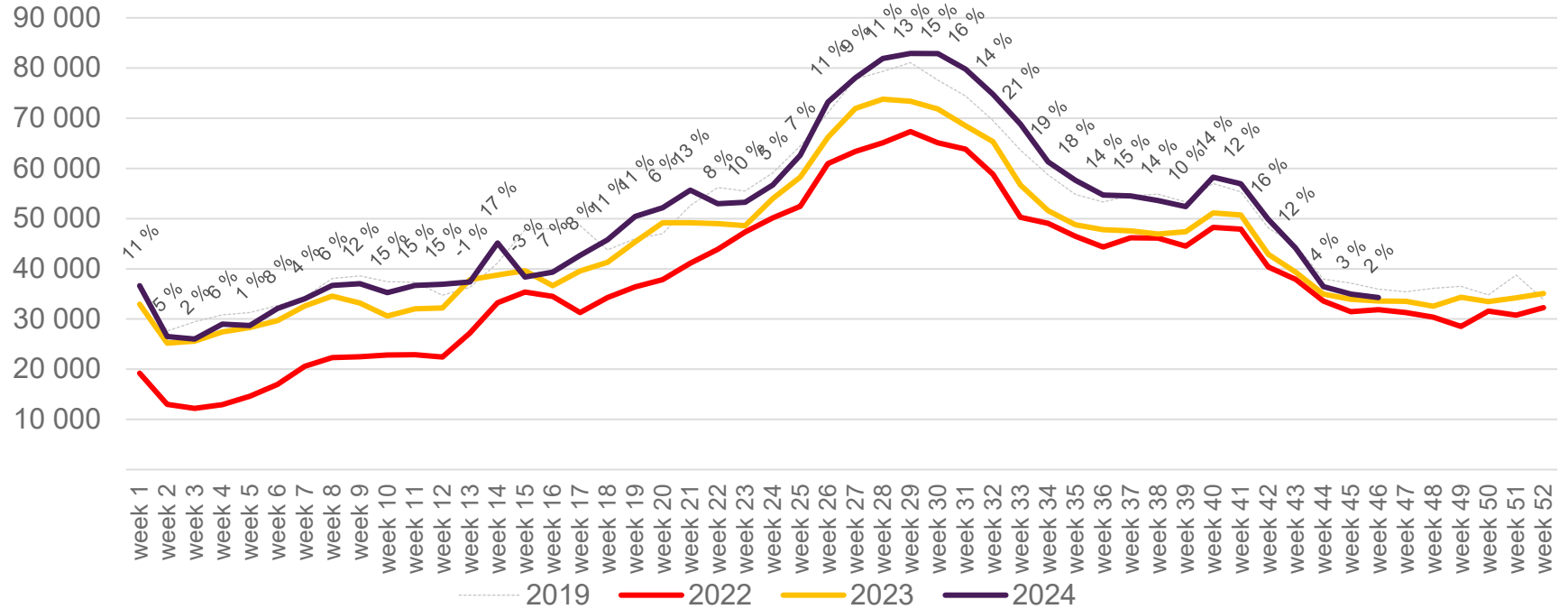
Passengers BGO total per week

The change is measured against the same week in 2023



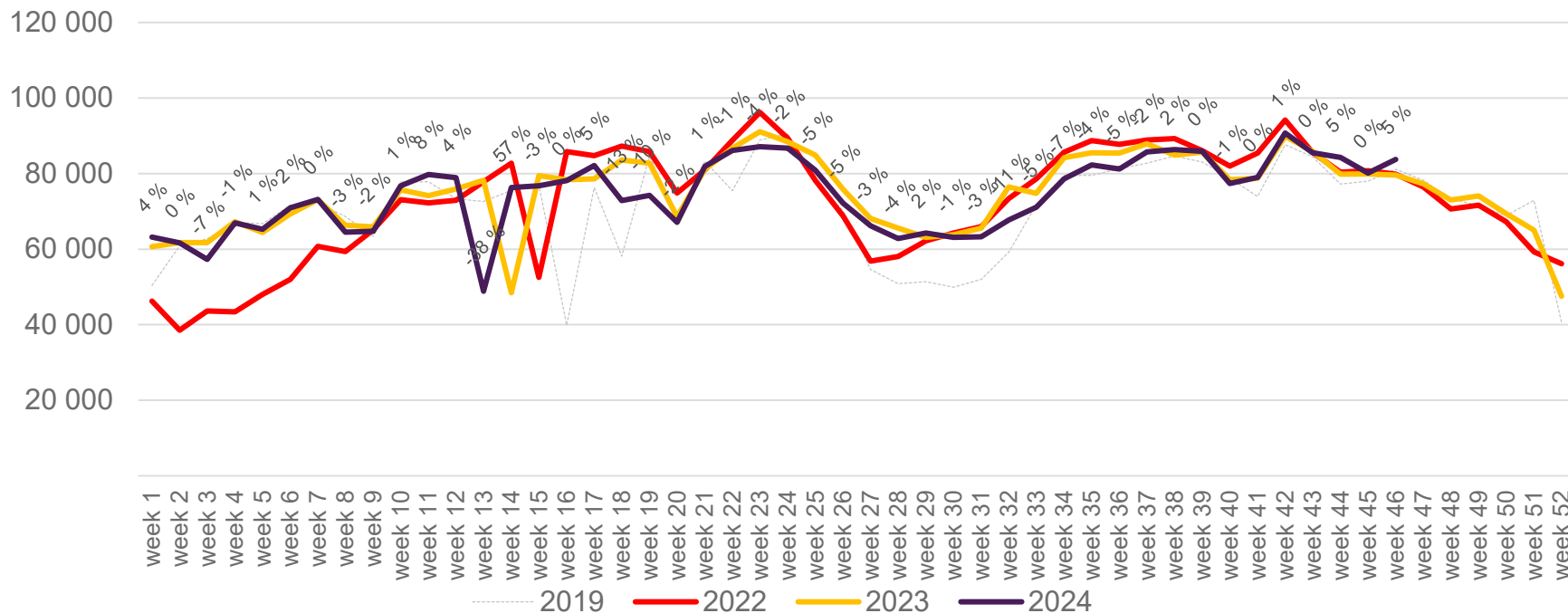
Passengers BGO international per week

The change is measured against the same week in 2023

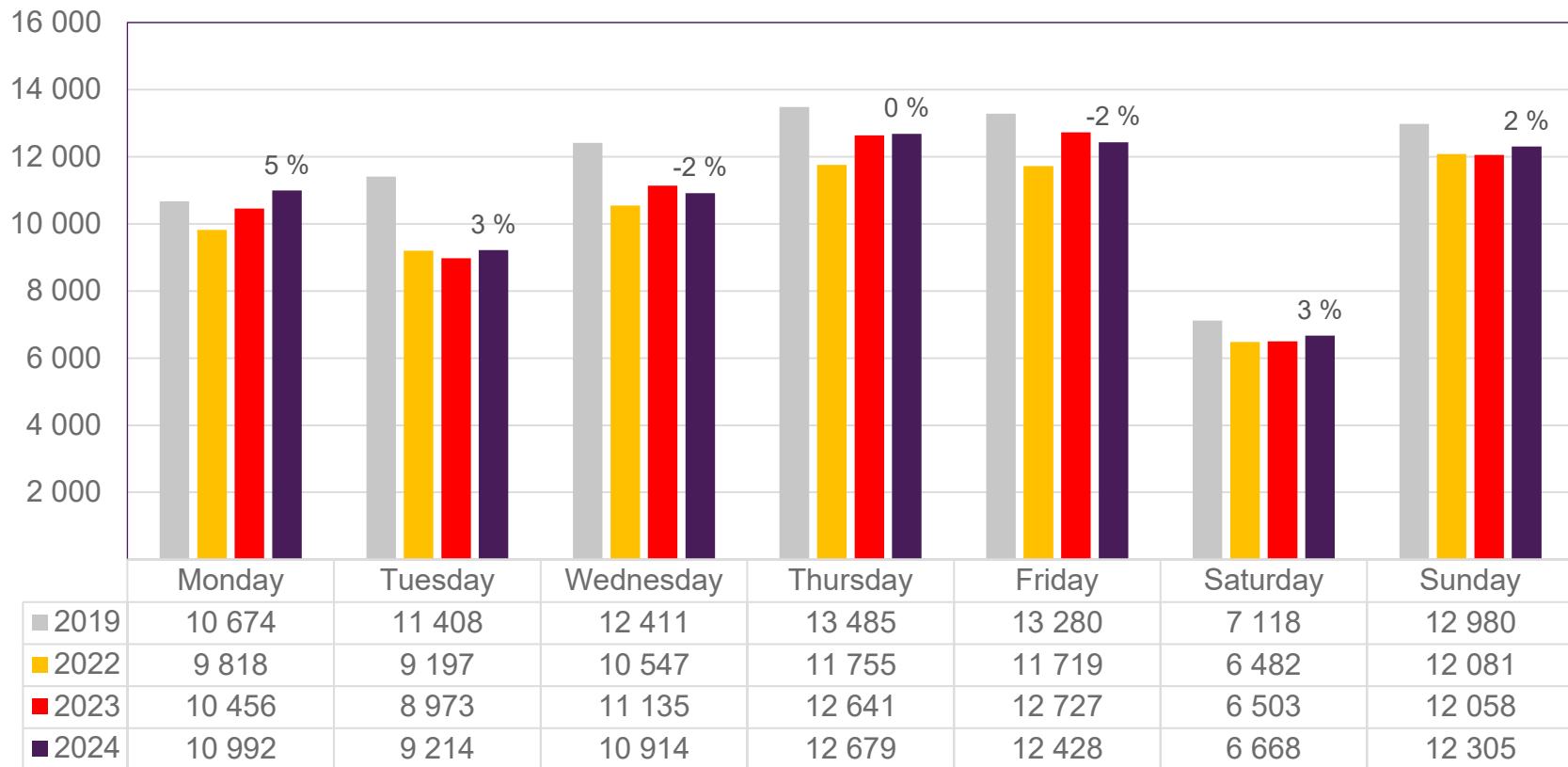


Passengers BGO domestic per week

The change is measured against the same week in 2023



Passengers SVG total per day, week 46

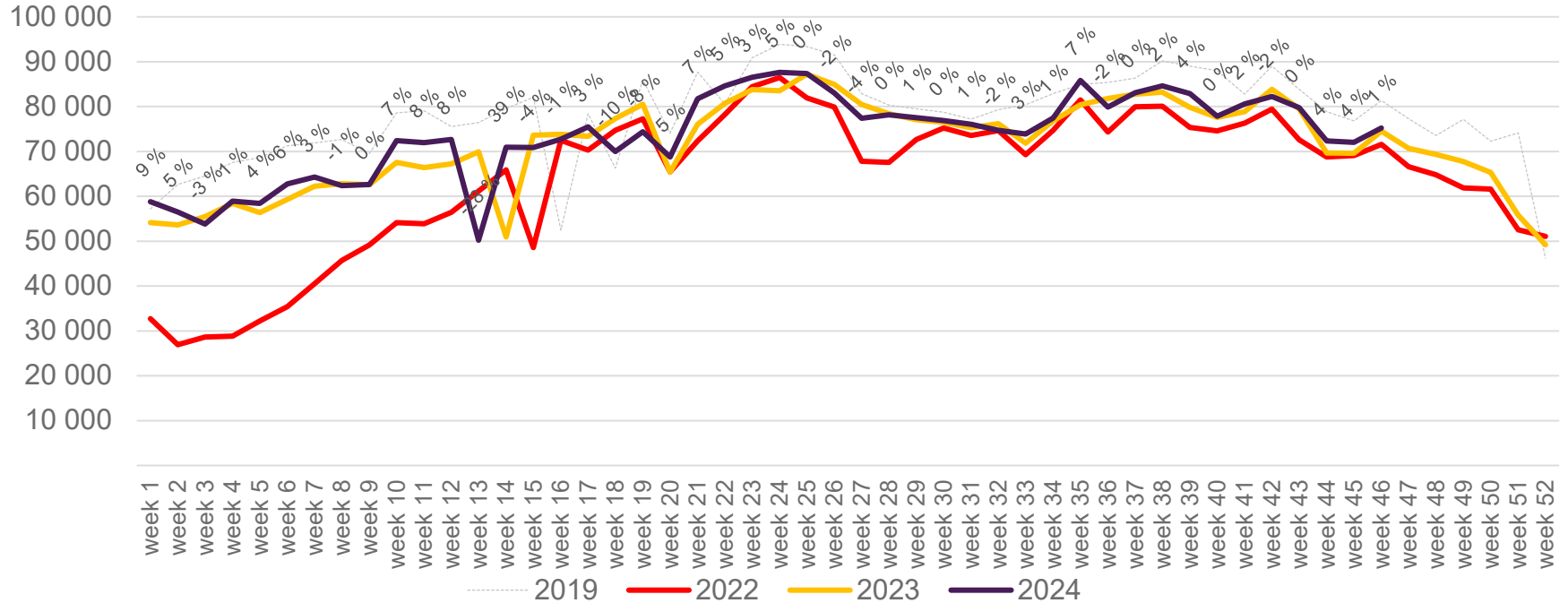


The change is measured against the same week in 2023

Source: SIA, Avinor Statistics

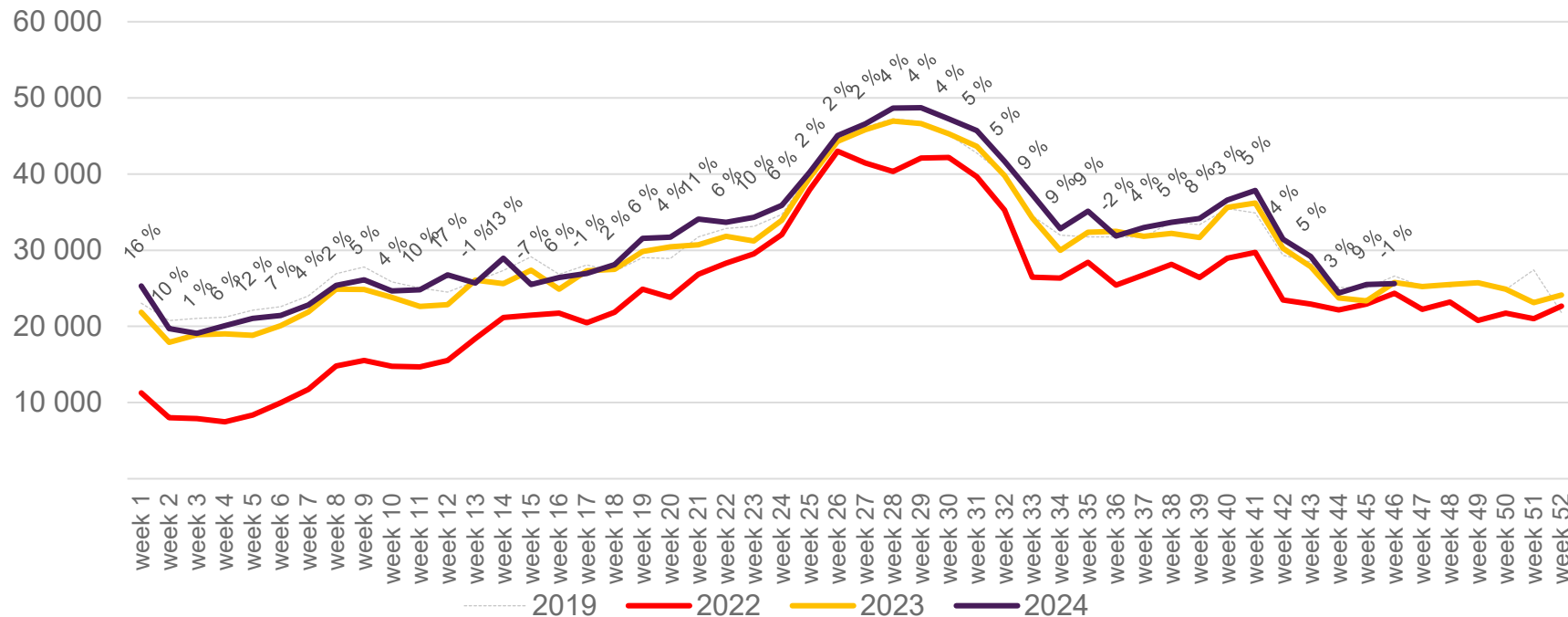
Passengers SVG total per week

The change is measured against the same week in 2023



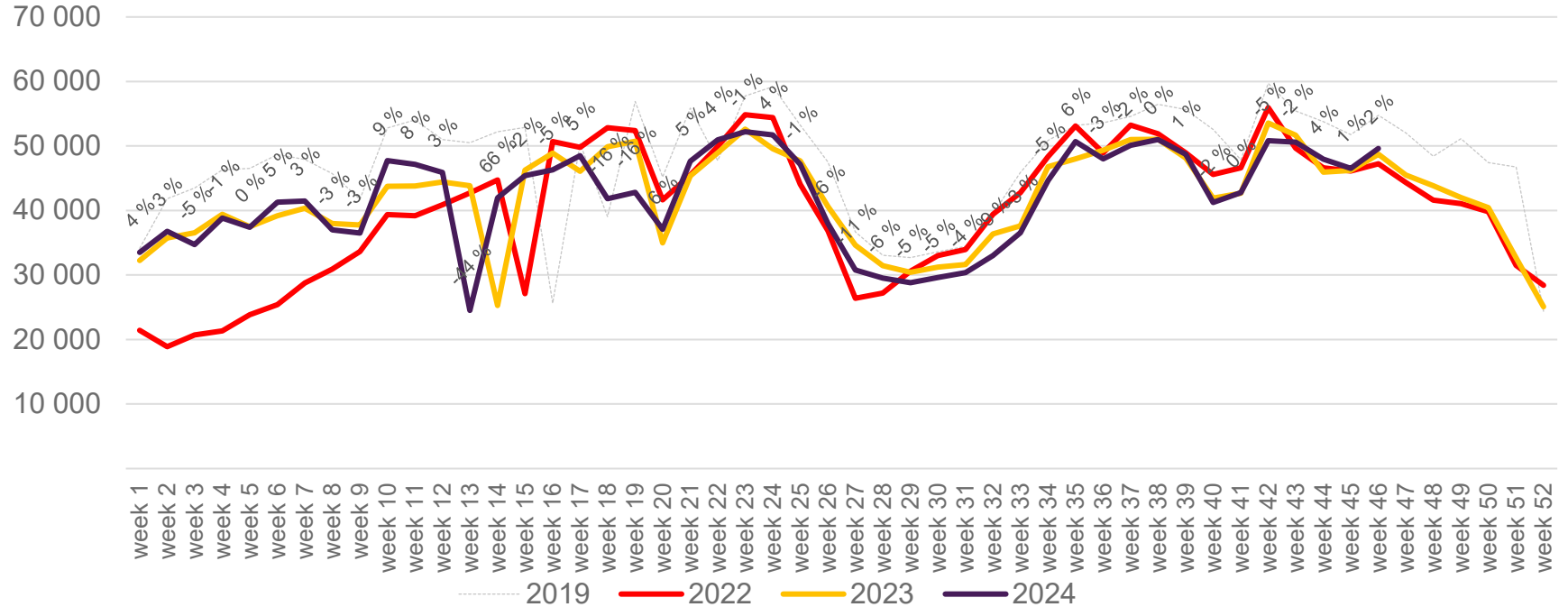
Passengers SVG international per week

The change is measured against the same week in 2023

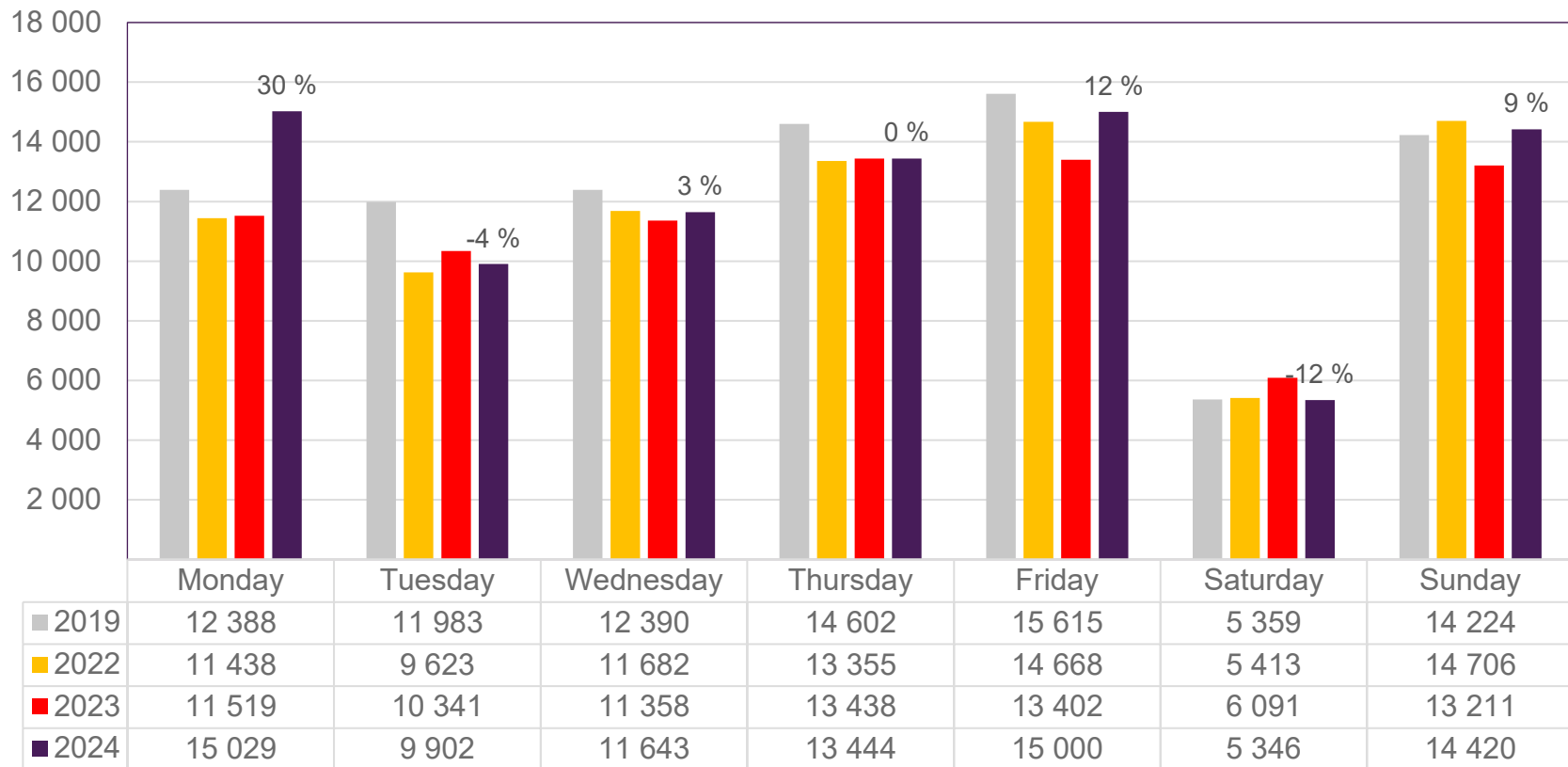


Passengers SVG domestic per week

The change is measured against the same week in 2023



Passengers TRD total per day, week 46

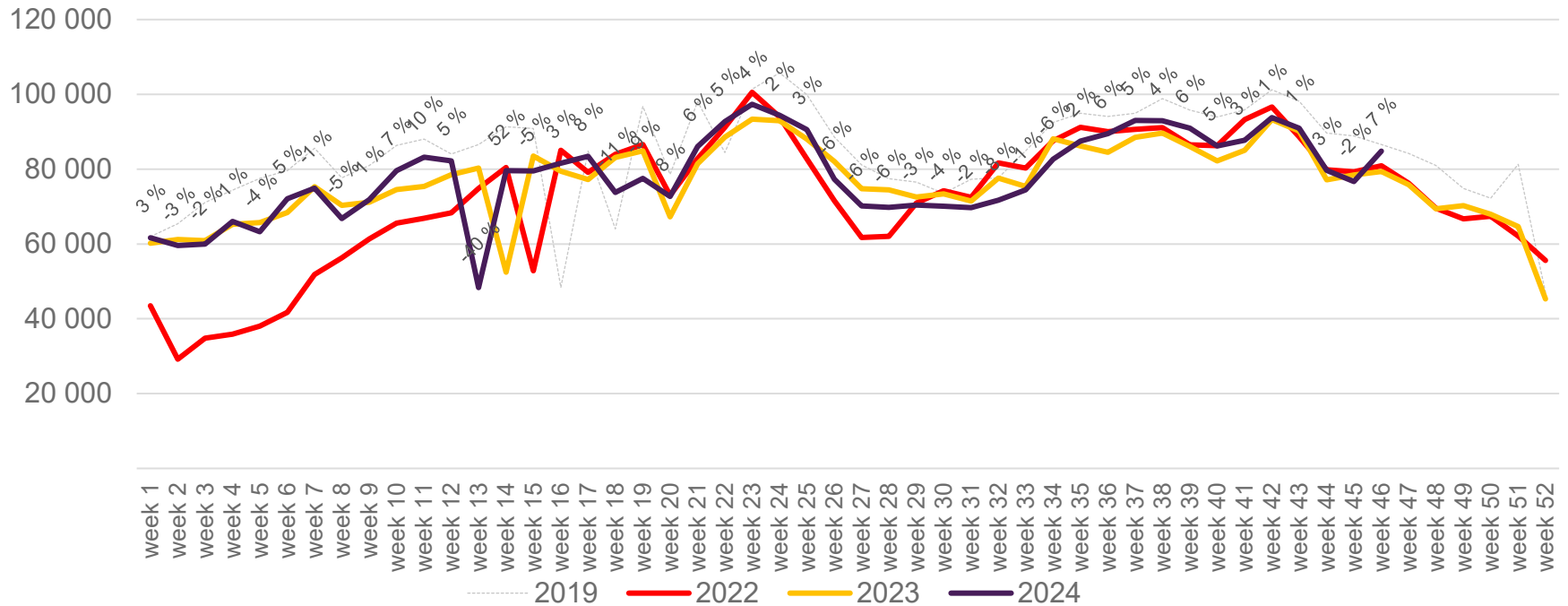


The change is measured against the same week in 2023

Source: SIA, Avinor Statistics

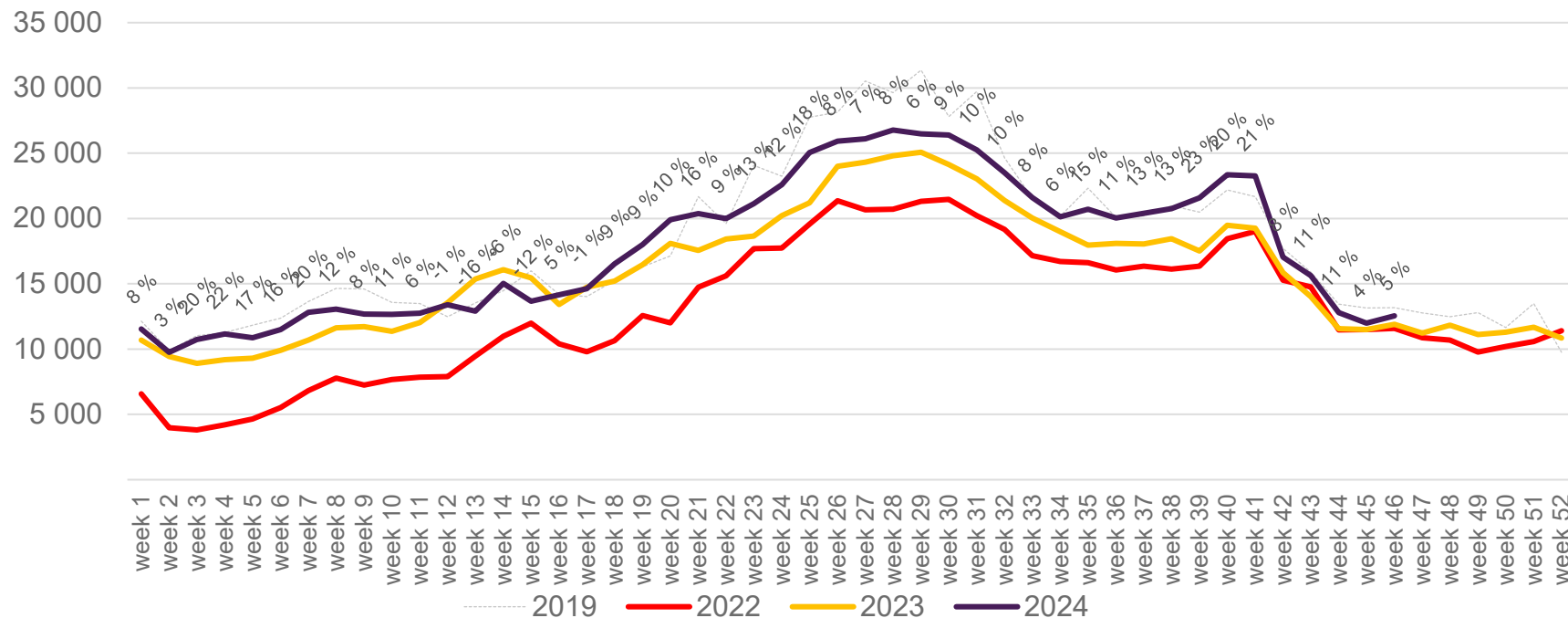
Passengers TRD total per week

The change is measured against the same week in 2023



Passengers TRD international per week

The change is measured against the same week in 2023



Passengers TRD domestic per week

The change is measured against the same week in 2023

