



Passenger numbers per week

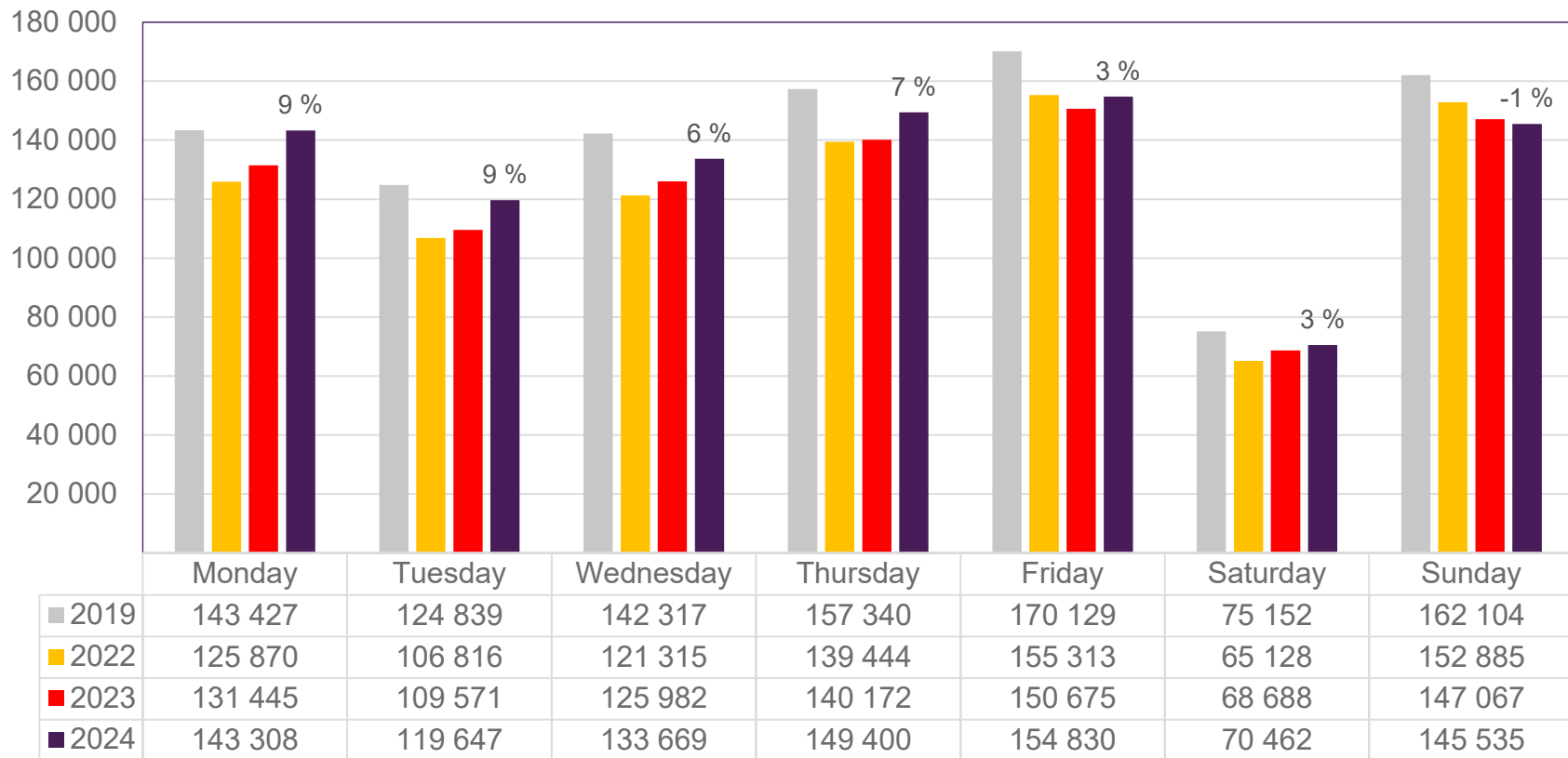
## Preliminary figures

- The figures for the previous week are preliminary. It takes some time for all passenger numbers to be reported, so the figures for the previous week may be lower than the final figures.
- The figures are taken from SIA, Avinor's traffic database.

# Top 10 airports, total week 45

Airport	2019	2022	2023	2024	2024 vs. 2023	
					Change	Change %
Oslo/Gardermoen	503 843	432 000	433 643	461 068	27 425	6 %
Bergen/Flesland	115 123	112 169	113 837	112 921	-916	-1 %
Trondheim/Værnes	88 880	79 317	78 469	76 548	-1 921	-2 %
Stavanger/Sola	76 800	69 068	69 589	71 938	2 349	3 %
Tromsø/Langnes	43 395	41 401	45 664	56 088	10 424	23 %
Bodø	31 434	29 323	30 486	34 164	3 678	12 %
Ålesund/Vigra	21 764	18 280	19 182	18 924	-258	-1 %
Kristiansand/Kjevik	19 862	15 674	16 295	13 121	-3 174	-19 %
Harstad/Narvik/Evenes	12 148	12 323	12 534	12 745	211	2 %
Bardufoss	4 548	3 848	3 488	3 615	127	4 %

# Passengers Avinor total per day, week 45

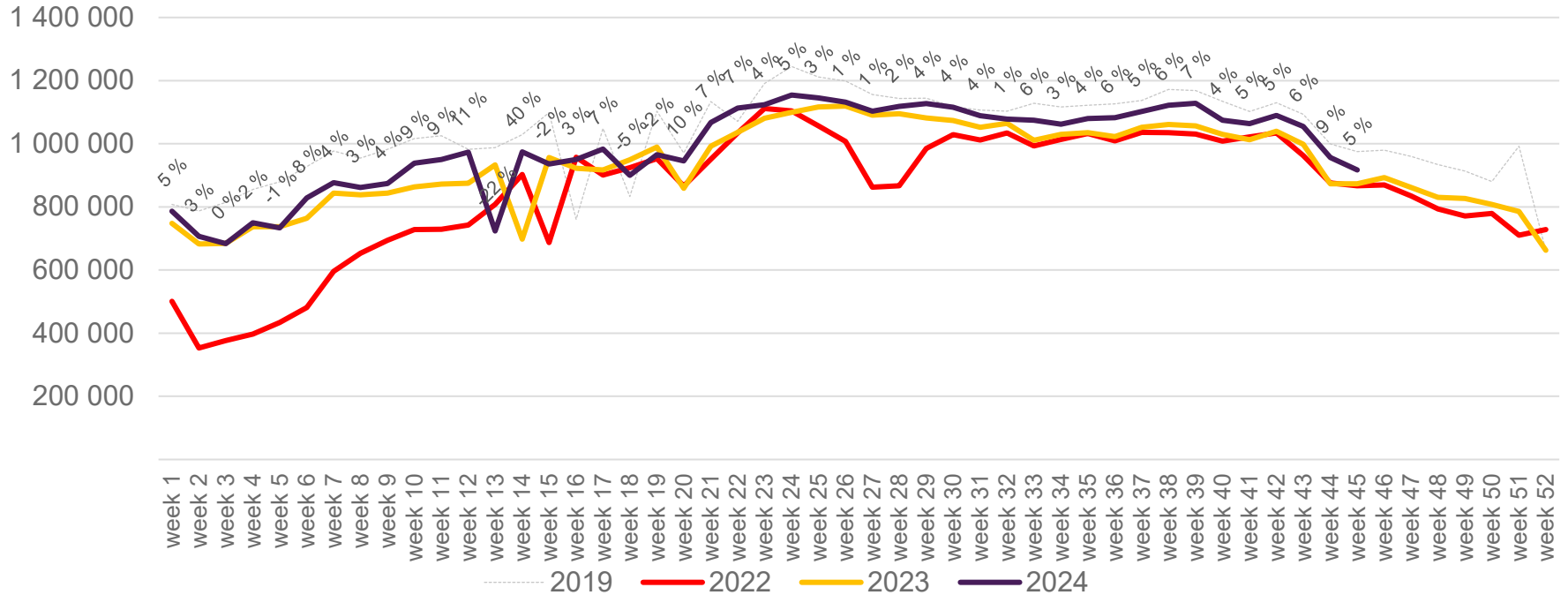


The change is measured against the same week in 2023

Source: SIA, Avinor Statistics

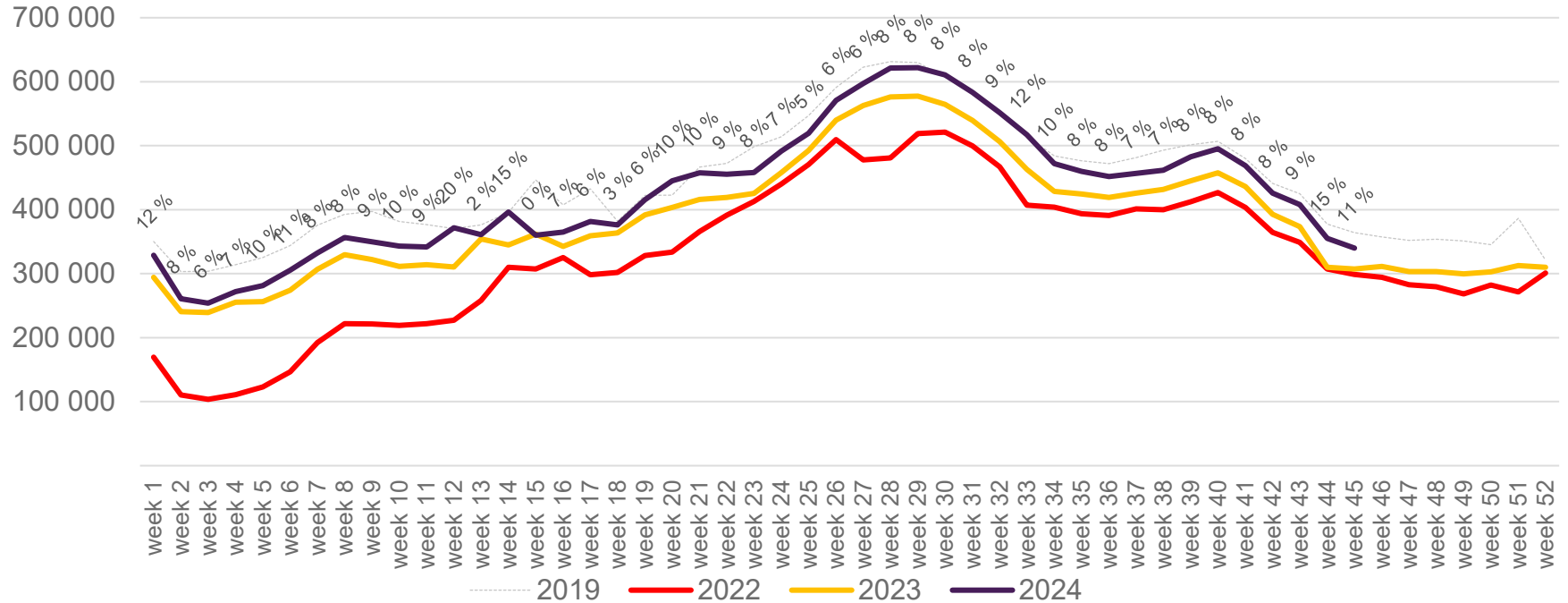
# Passengers Avinor total per week

The change is measured against the same week in 2023



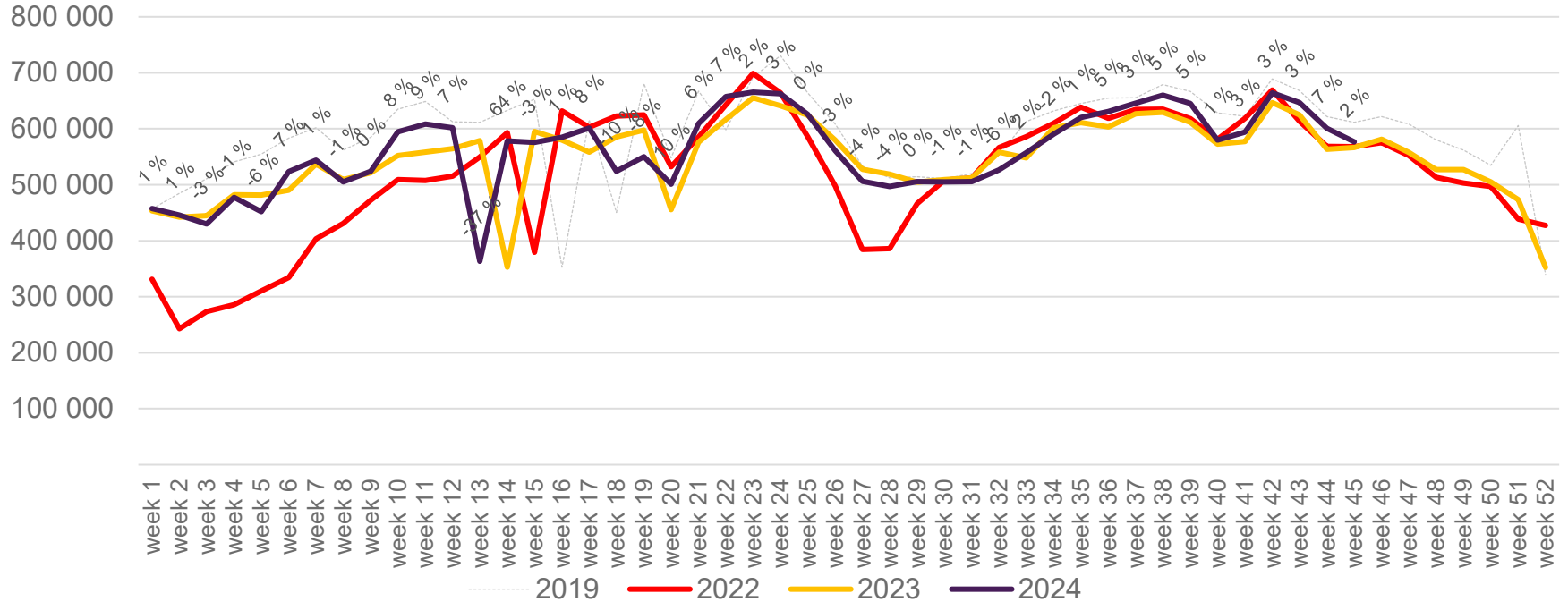
# Passengers Avinor international per week

The change is measured against the same week in 2023

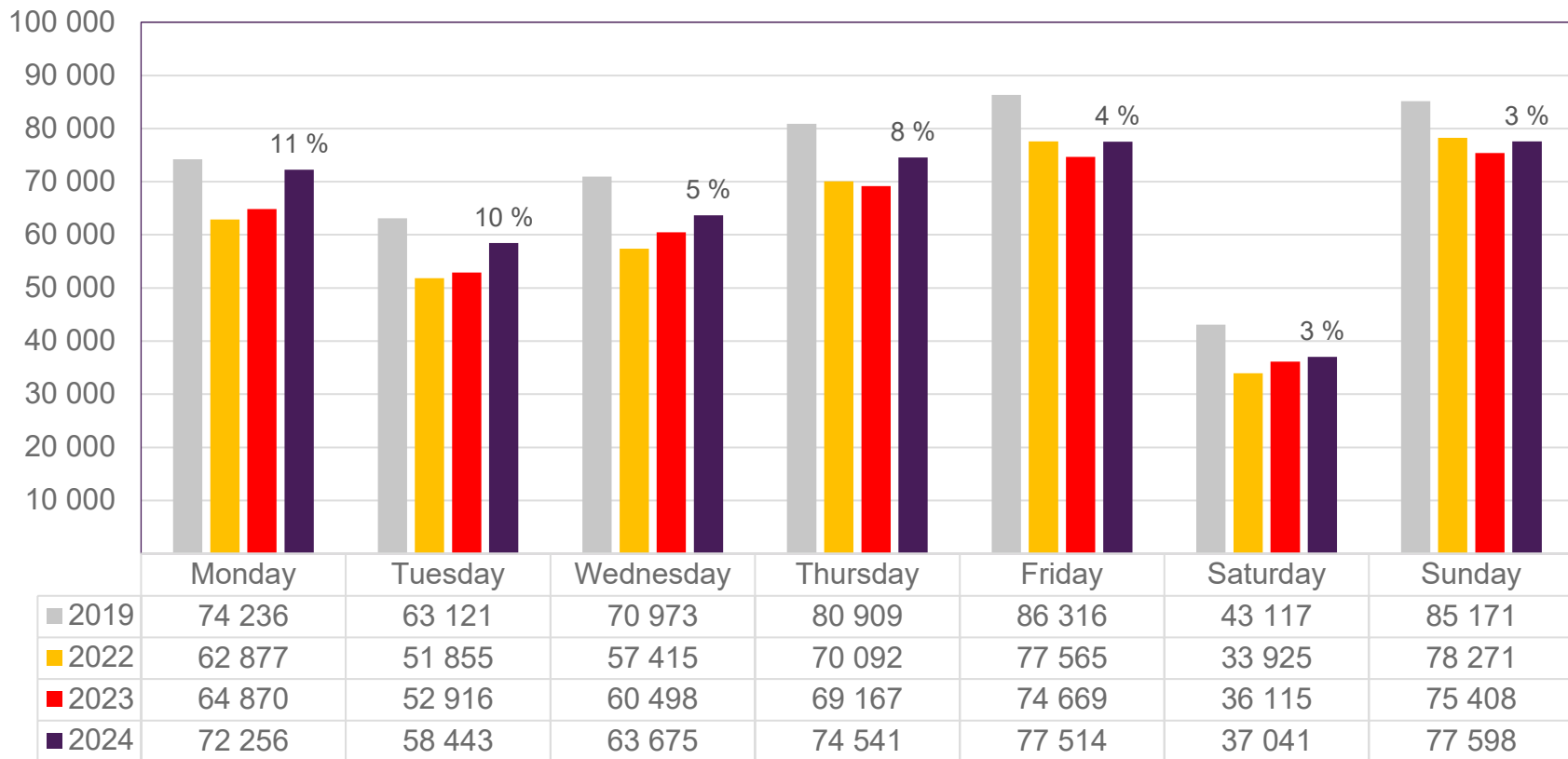


# Passengers Avinor domestic per week

The change is measured against the same week in 2023



# Passengers OSL total per day, week 45



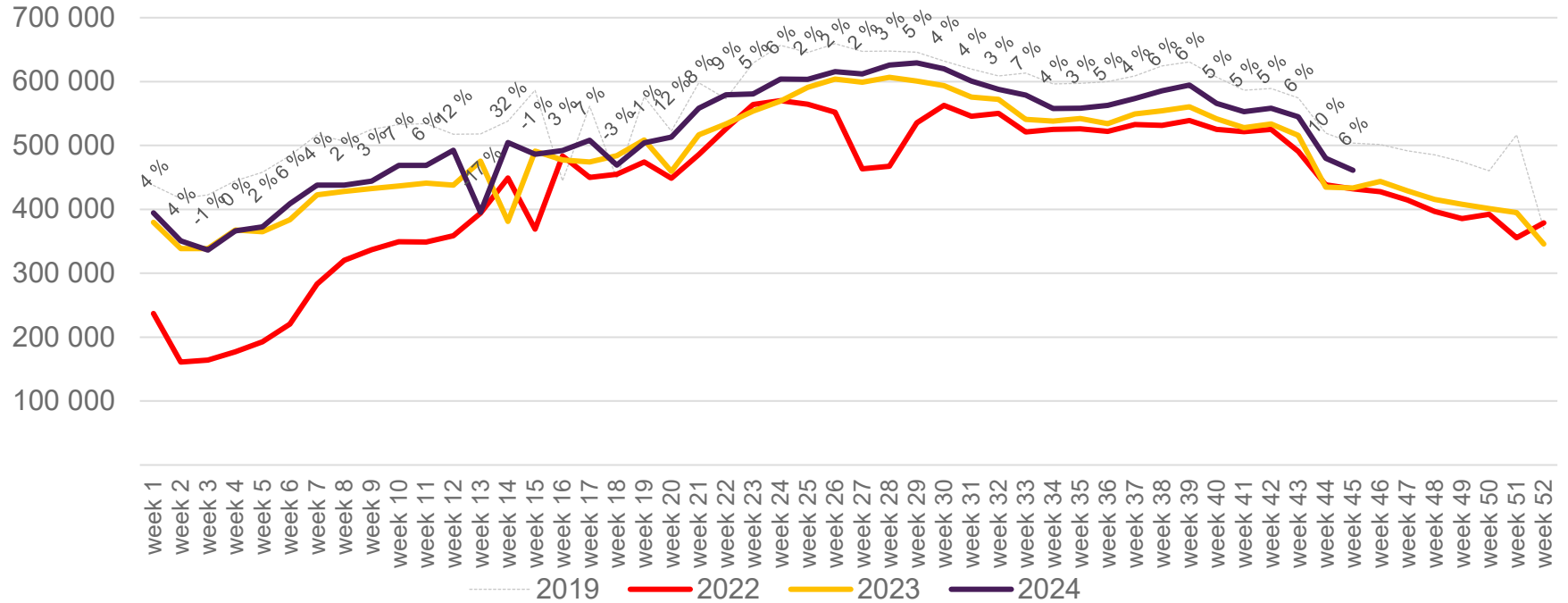
The change is measured against the same week in 2023

Source: SIA, Avinor Statistics



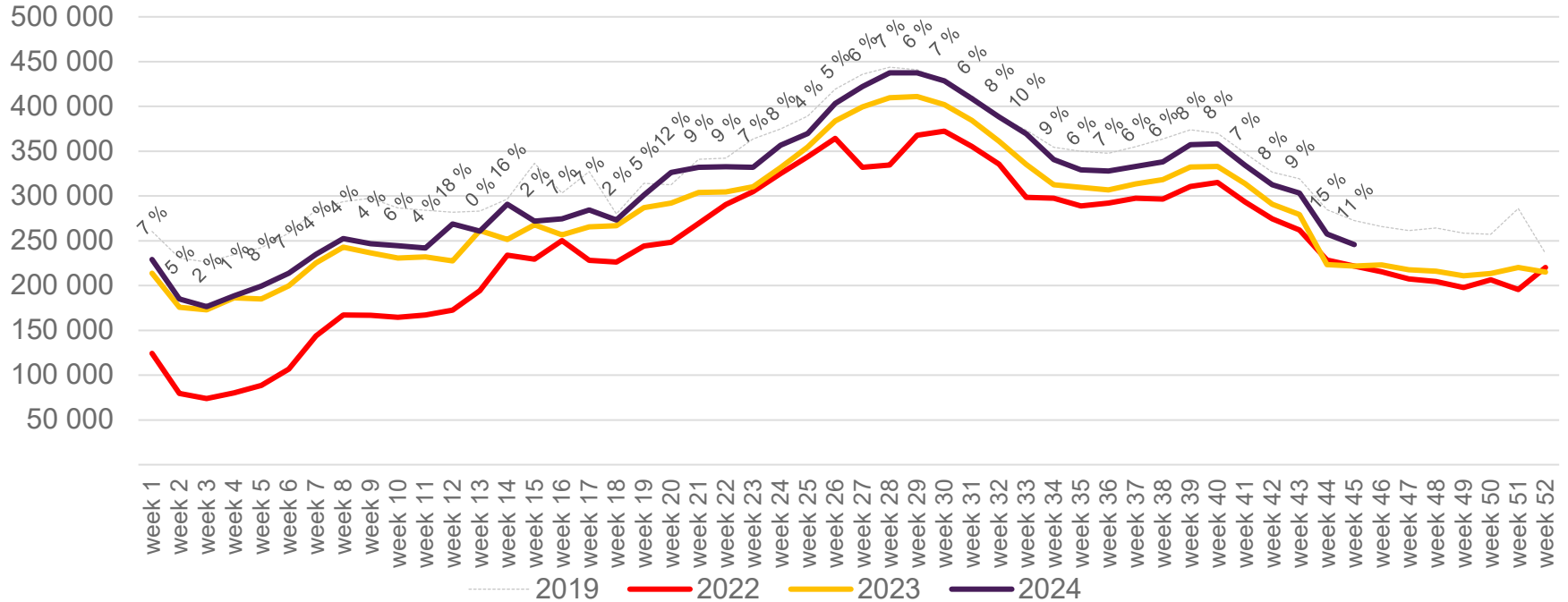
# Passengers OSL total per week

The change is measured against the same week in 2023



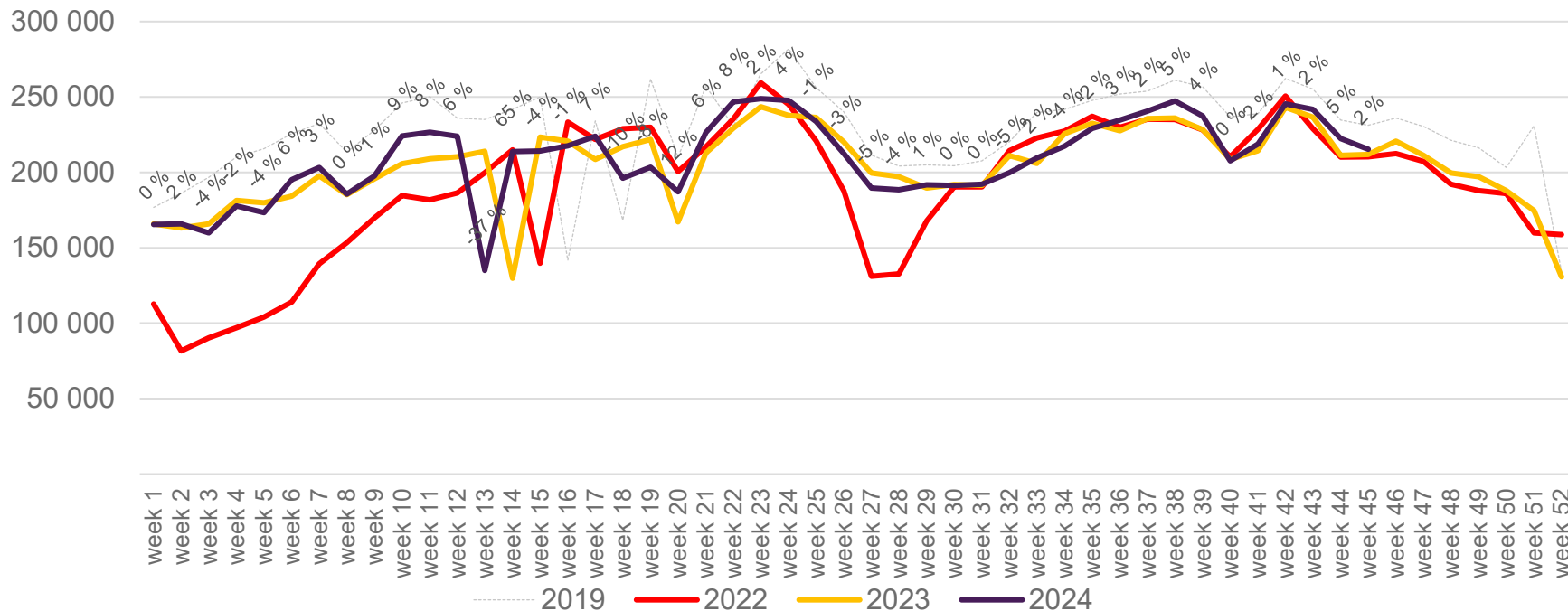
# Passengers OSL international per week

The change is measured against the same week in 2023

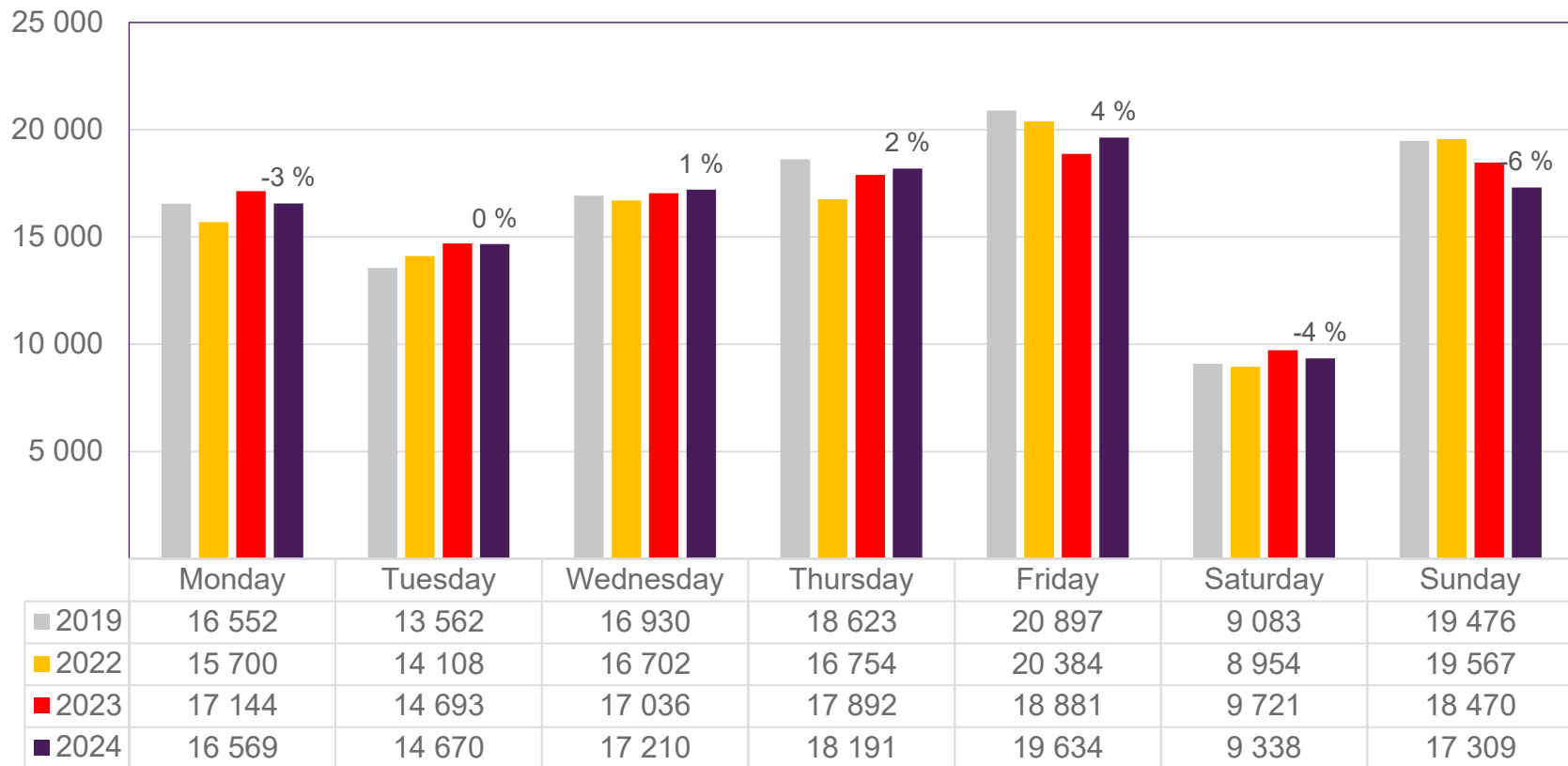


# Passengers OSL domestic per week

The change is measured against the same week in 2023



# Passengers BGO total per day, week 45

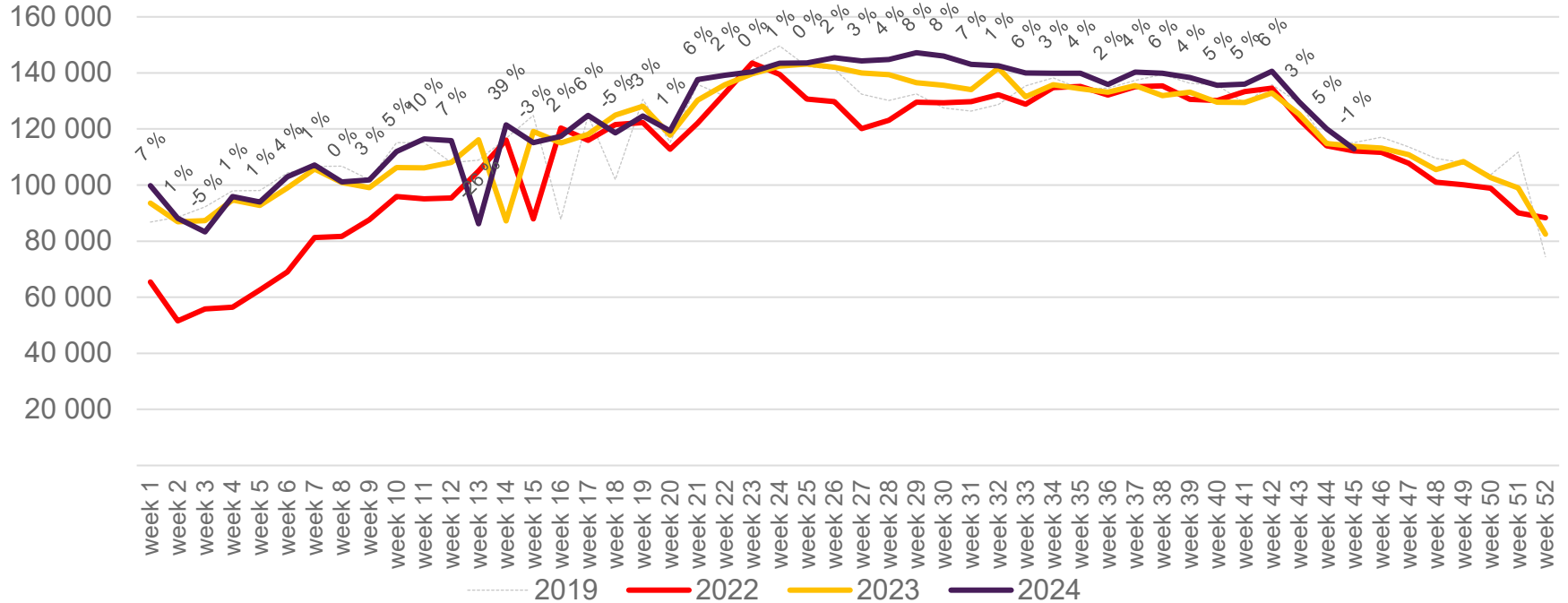


The change is measured against the same week in 2023

Source: SIA, Avinor Statistics

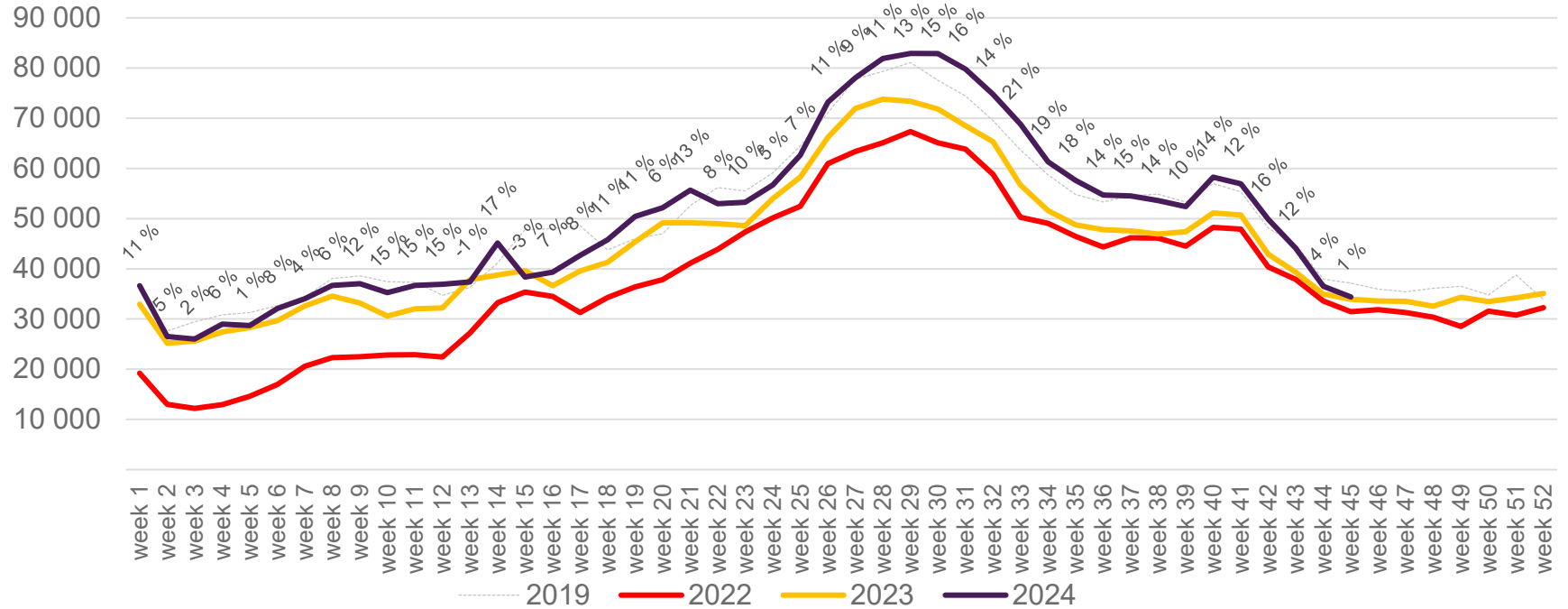
# Passengers BGO total per week

The change is measured against the same week in 2023



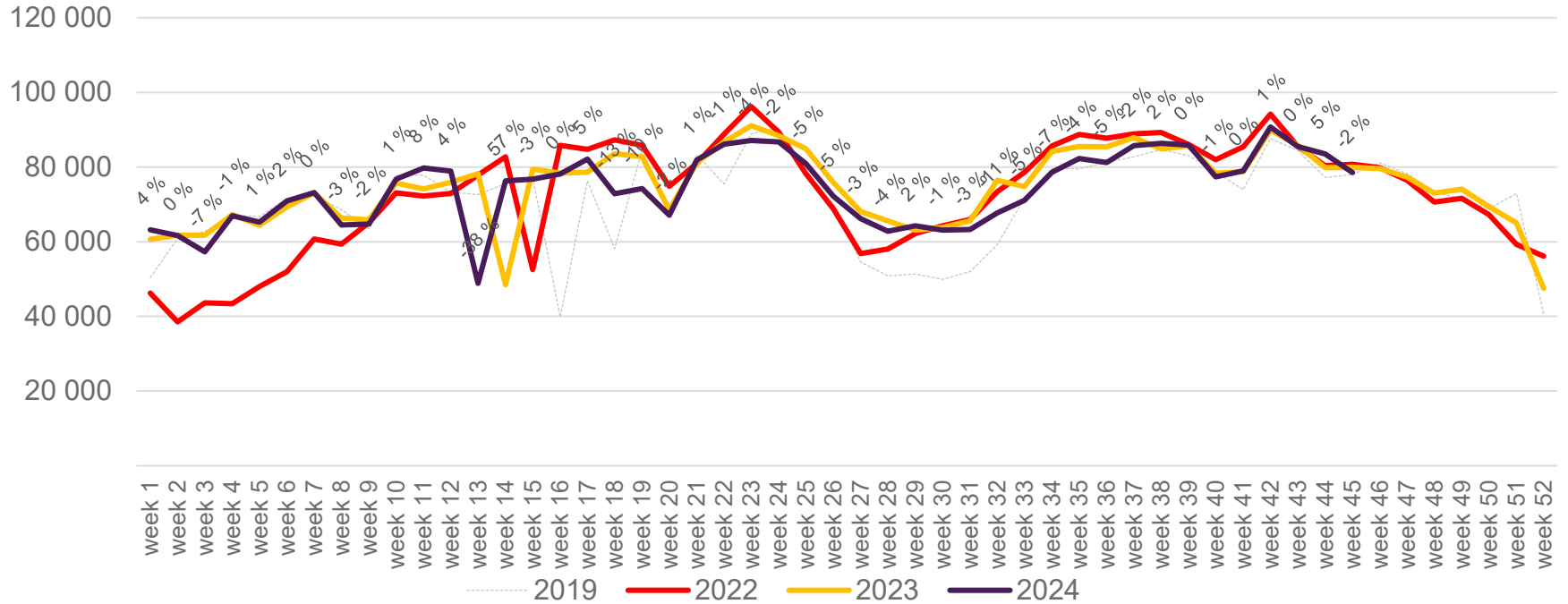
# Passengers BGO international per week

The change is measured against the same week in 2023

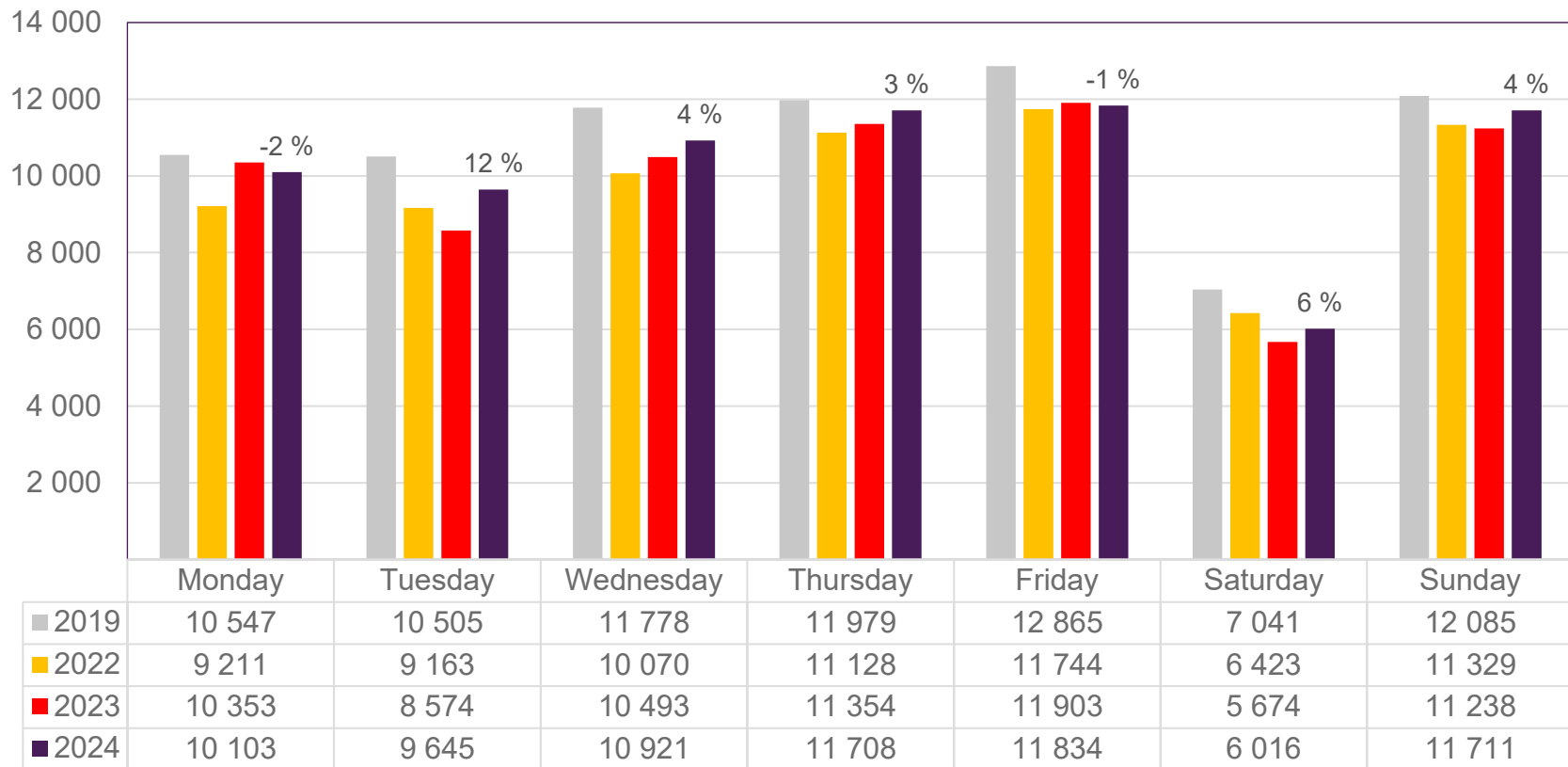


# Passengers BGO domestic per week

The change is measured against the same week in 2023



# Passengers SVG total per day, week 45



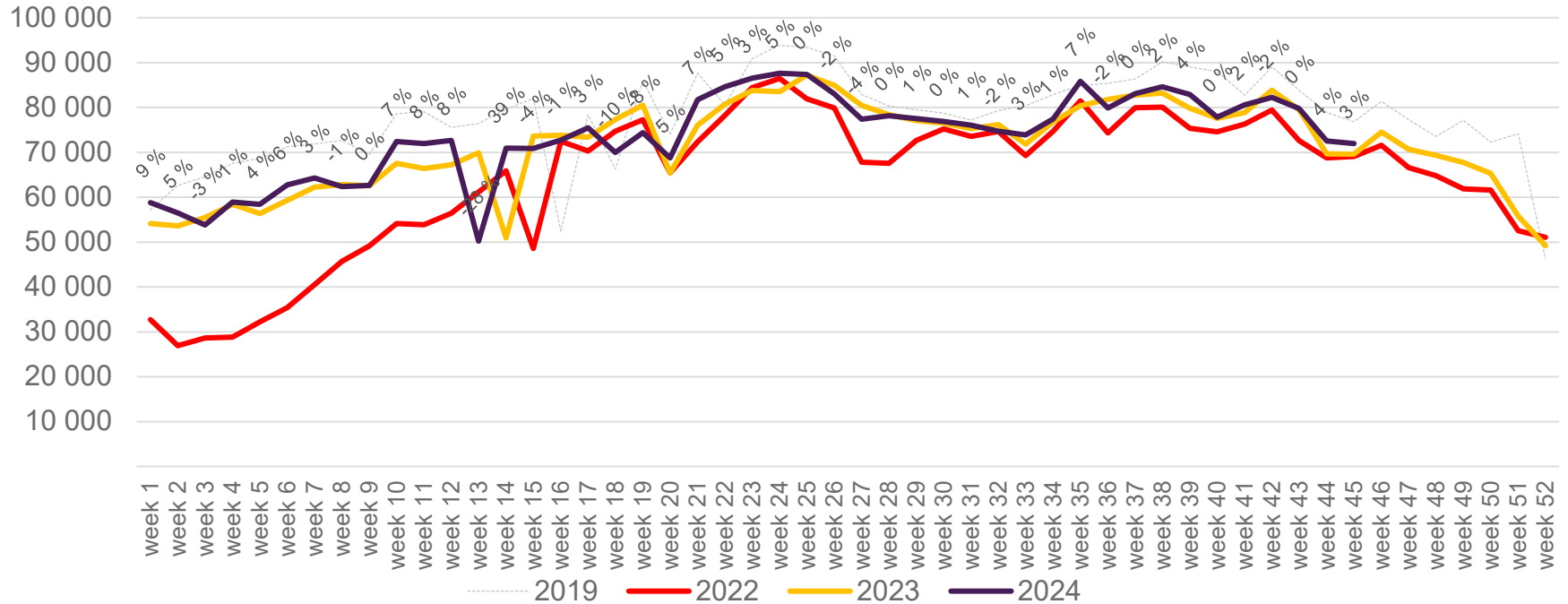
The change is measured against the same week in 2023

Source: SIA, Avinor Statistics



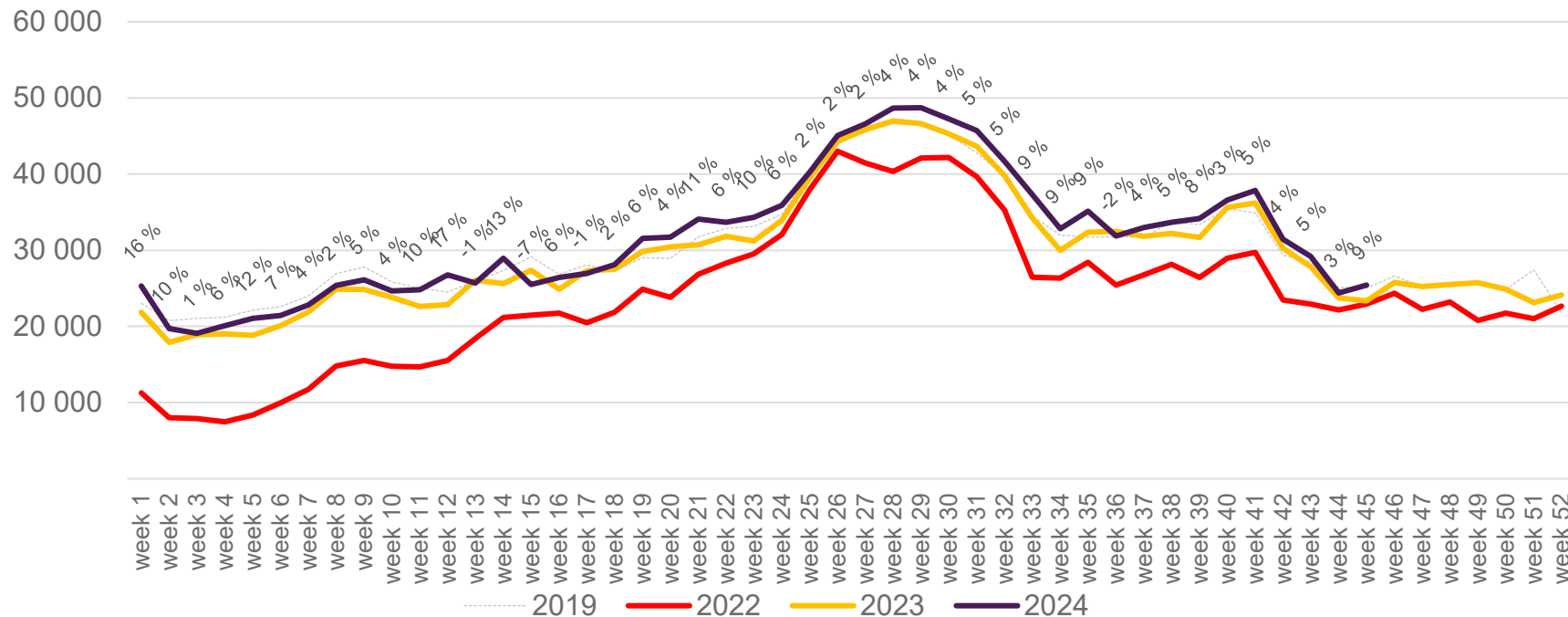
# Passengers SVG total per week

The change is measured against the same week in 2023



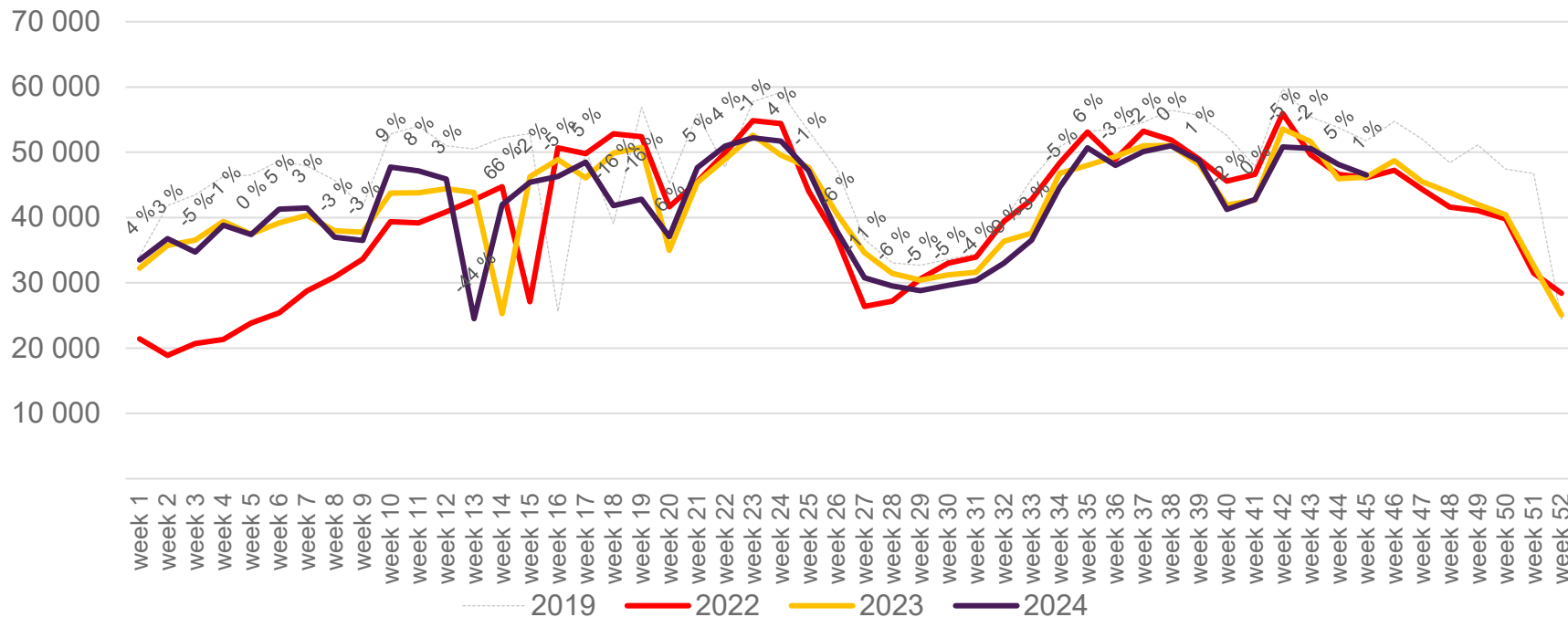
# Passengers SVG international per week

The change is measured against the same week in 2023

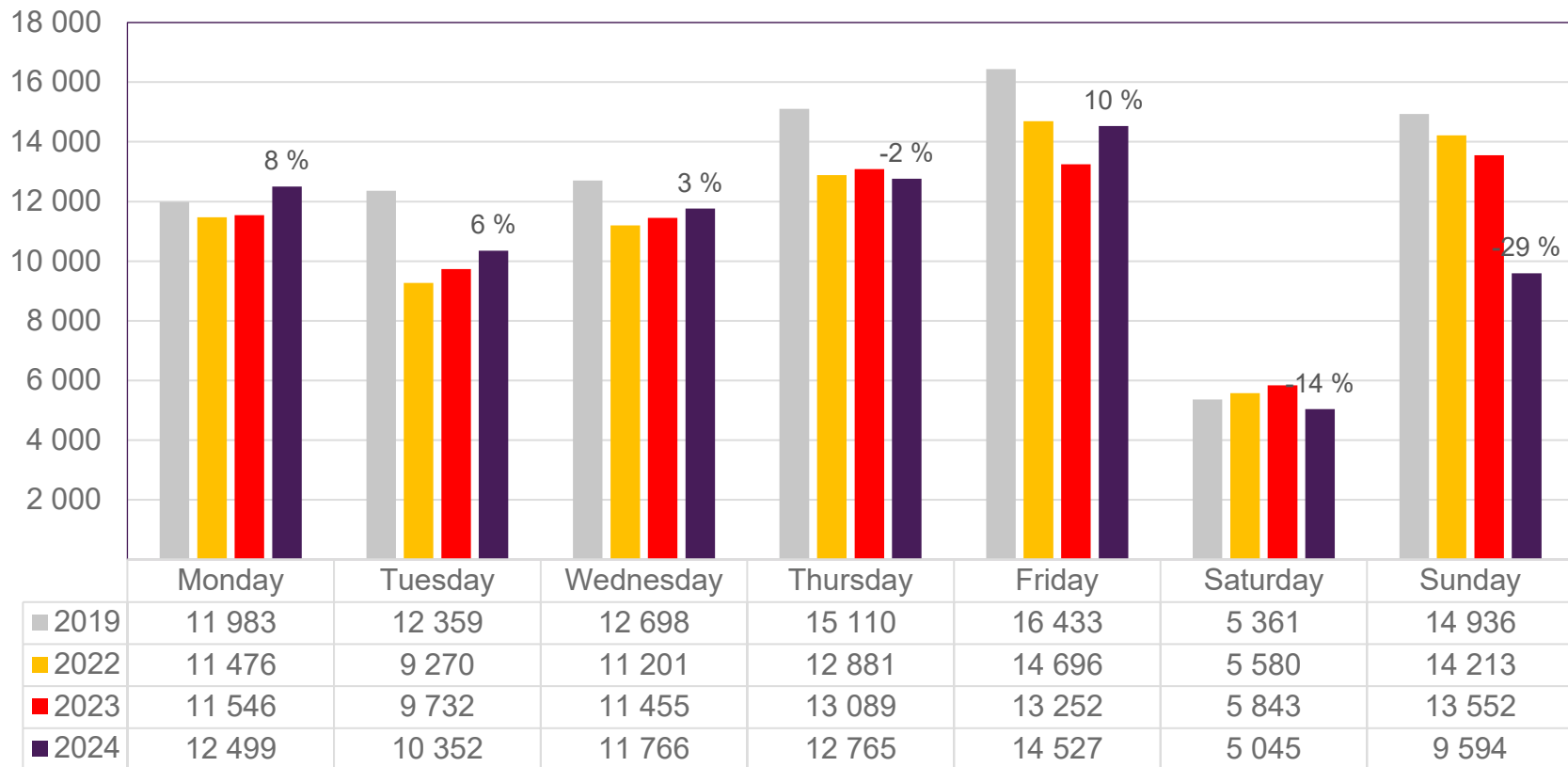


# Passengers SVG domestic per week

The change is measured against the same week in 2023



# Passengers TRD total per day, week 45

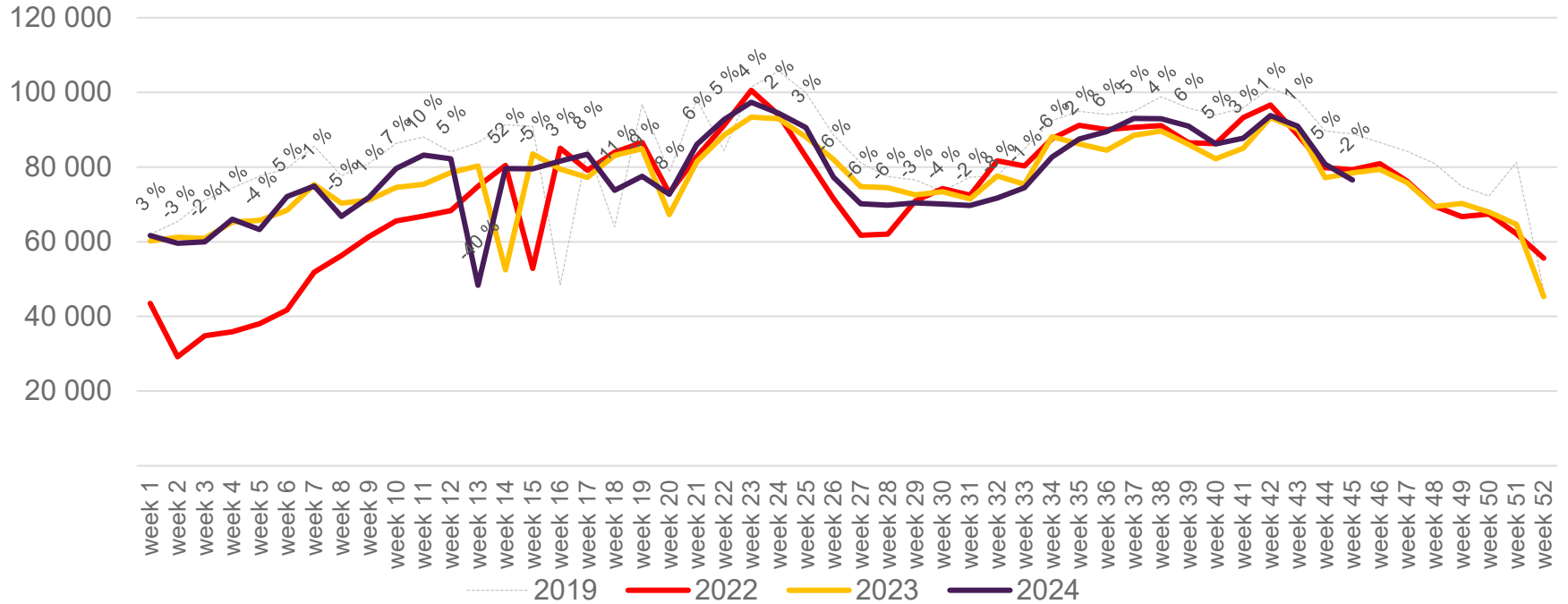


The change is measured against the same week in 2023

Source: SIA, Avinor Statistics

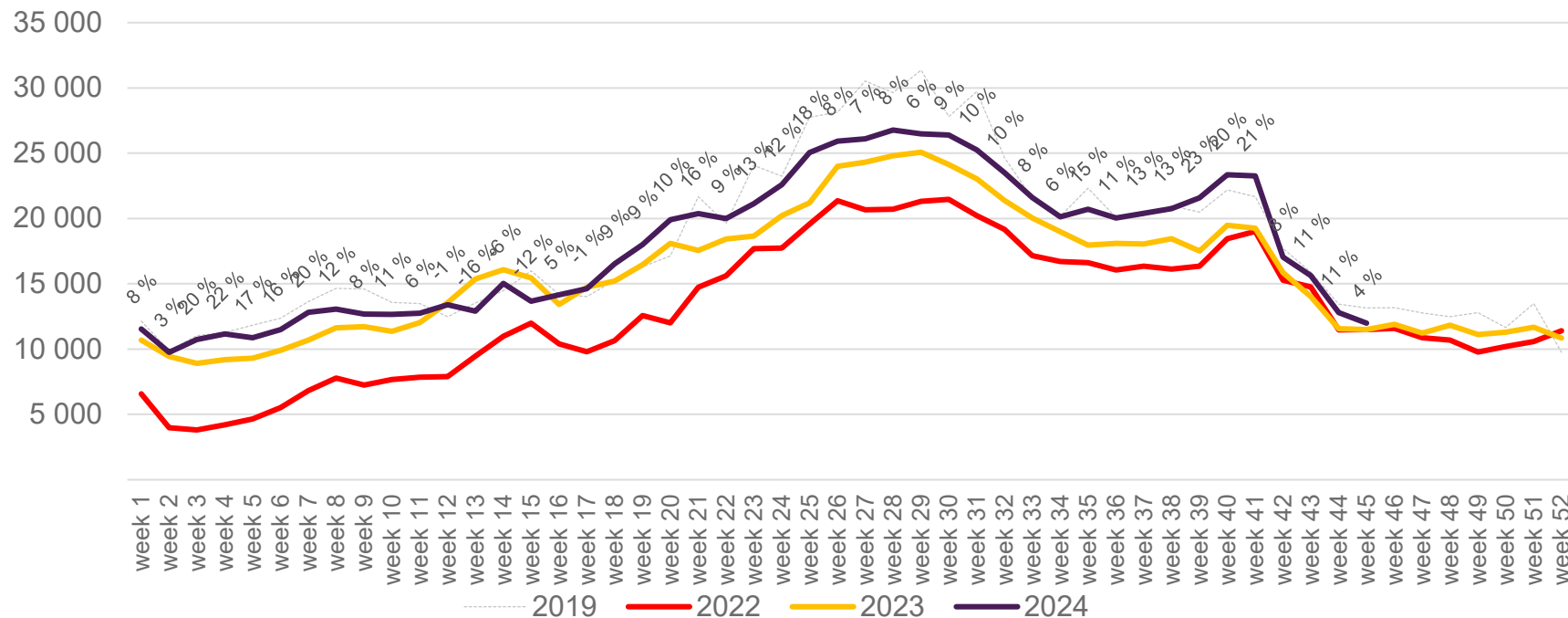
# Passengers TRD total per week

The change is measured against the same week in 2023



# Passengers TRD international per week

The change is measured against the same week in 2023



# Passengers TRD domestic per week

The change is measured against the same week in 2023

