



Passenger numbers per week

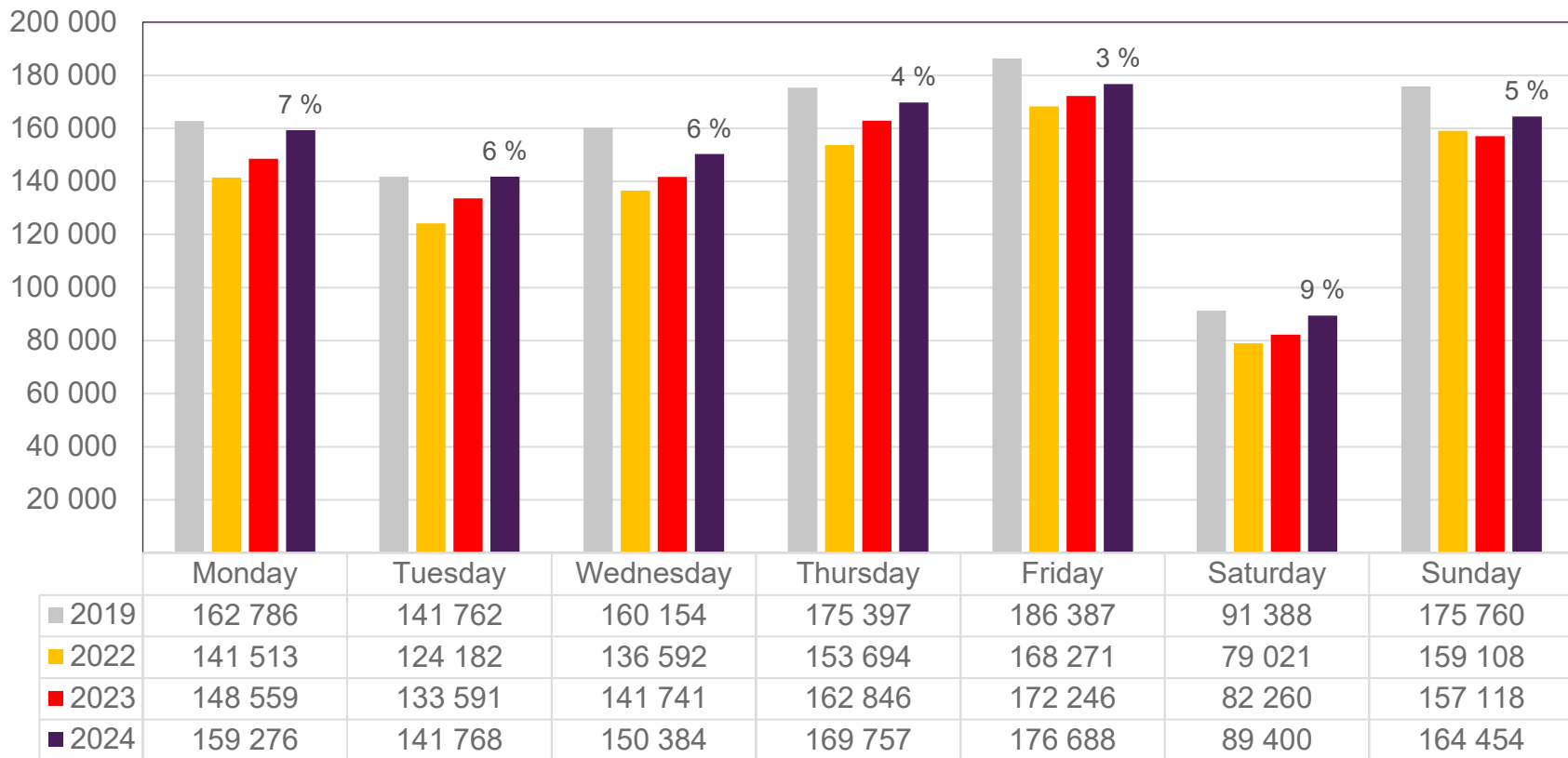
Preliminary figures

- The figures for the previous week are preliminary. It takes some time for all passenger numbers to be reported, so the figures for the previous week may be lower than the final figures.
- The figures are taken from SIA, Avinor's traffic database.

Top 10 airports, total week 43

Airport	2019	2022	2023	2024	2024 vs. 2023	
					Change	Change %
Oslo/Gardermoen	574 478	490 843	515 855	542 917	27 062	5 %
Bergen/Flesland	129 222	123 439	125 271	129 043	3 772	3 %
Trondheim/Værnes	98 139	88 637	90 217	90 850	633	1 %
Stavanger/Sola	83 852	72 620	79 509	79 751	242	0 %
Tromsø/Langnes	45 734	43 965	44 003	51 788	7 785	18 %
Bodø	35 503	32 438	33 559	38 322	4 763	14 %
Ålesund/Vigra	23 778	20 082	20 722	20 506	-216	-1 %
Kristiansand/Kjevik	22 896	17 276	16 702	17 471	769	5 %
Harstad/Narvik/Evenes	13 325	13 190	13 937	14 671	734	5 %
Bardufoss	4 596	3 699	3 498	3 600	102	3 %

Passengers Avinor total per day, week 43

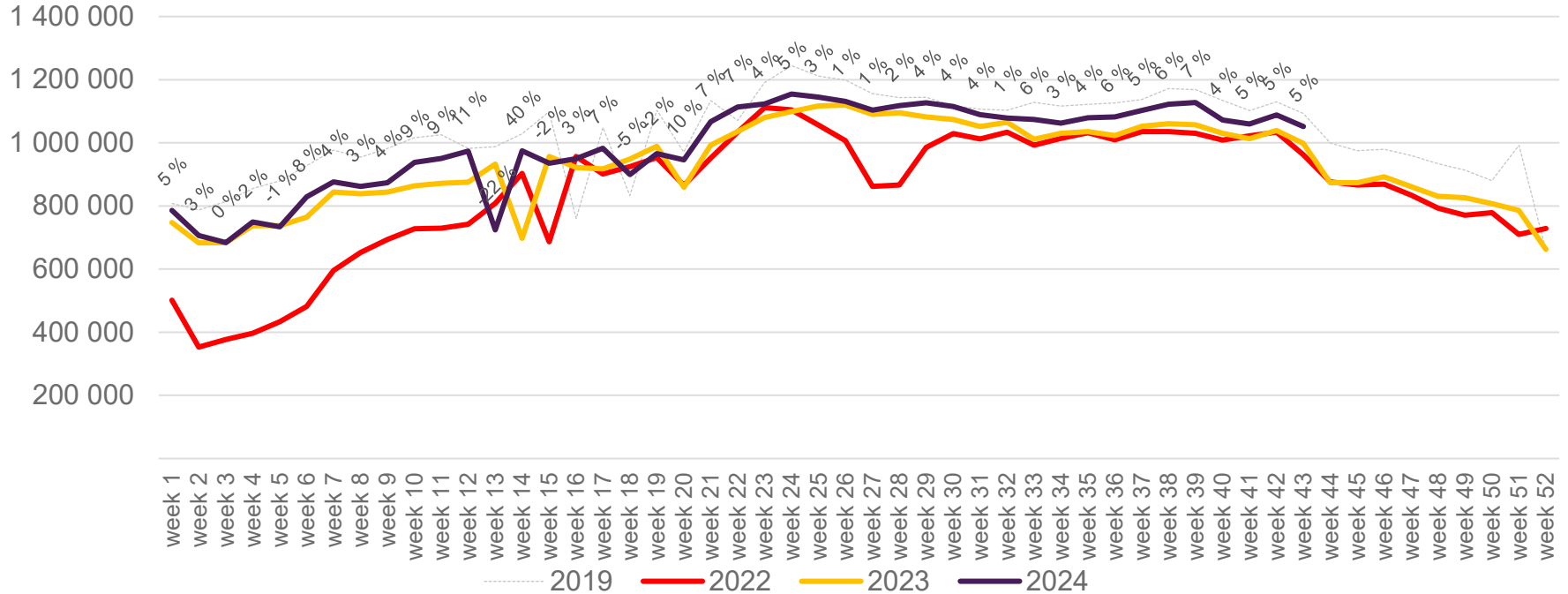


The change is measured against the same week in 2023

Source: SIA, Avinor Statistics

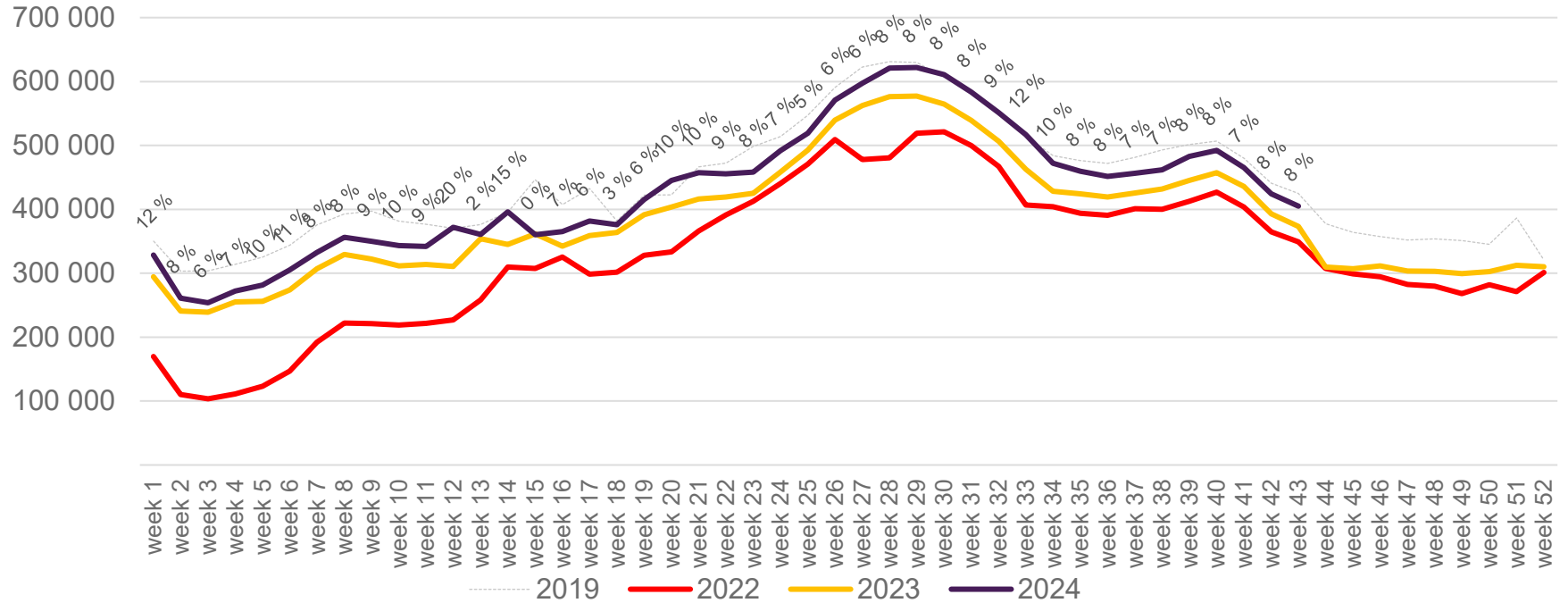
Passengers Avinor total per week

The change is measured against the same week in 2023



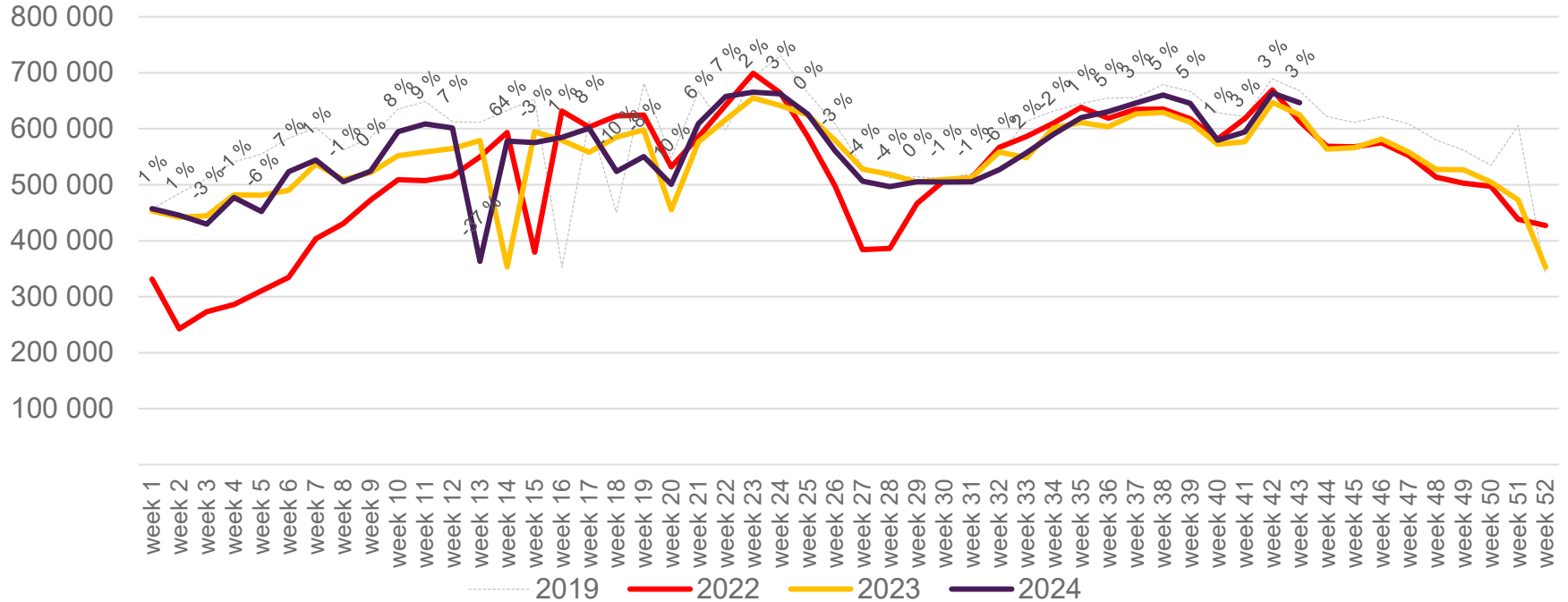
Passengers Avinor international per week

The change is measured against the same week in 2023

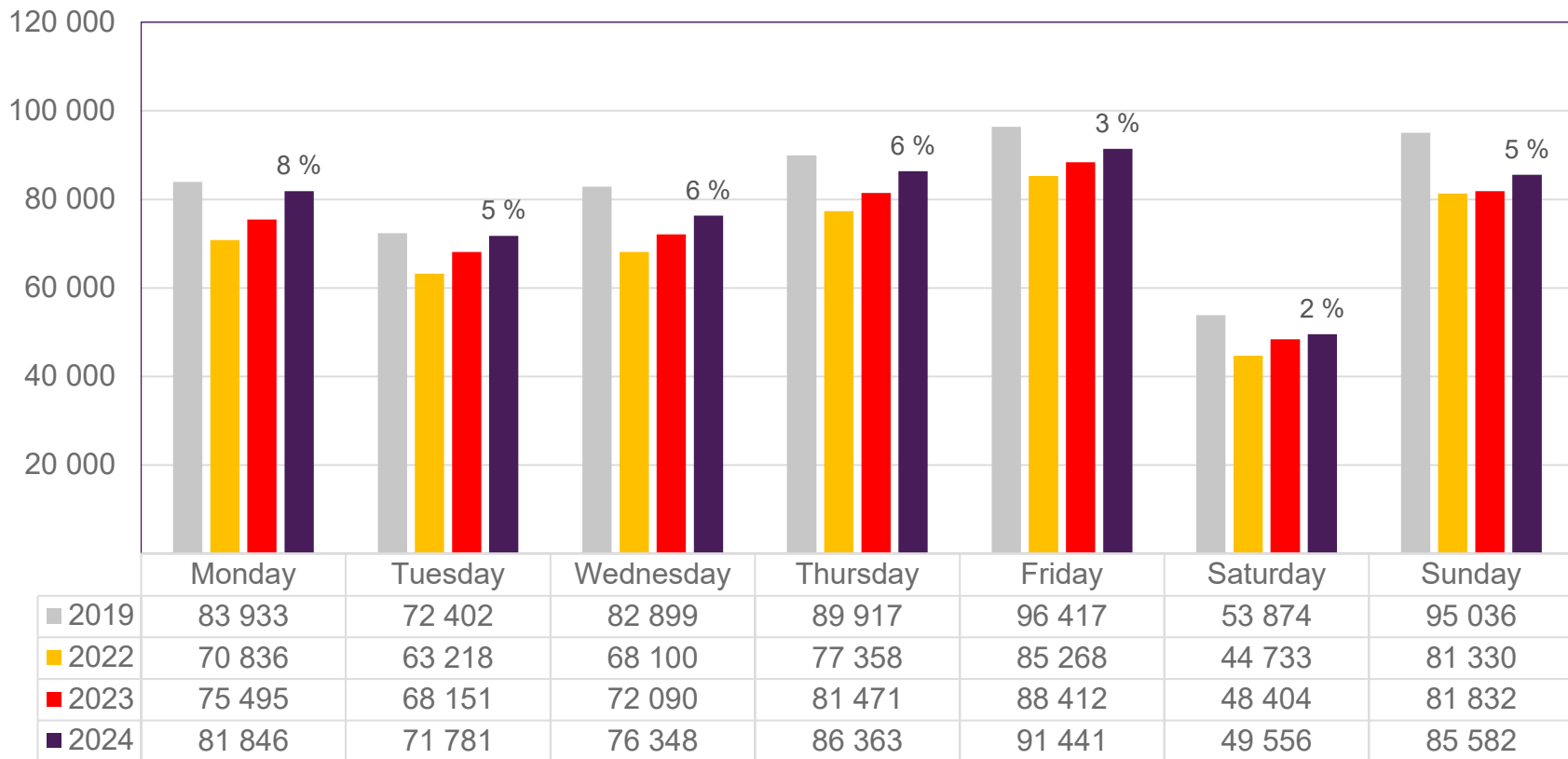


Passengers Avinor domestic per week

The change is measured against the same week in 2023



Passengers OSL total per day, week 43

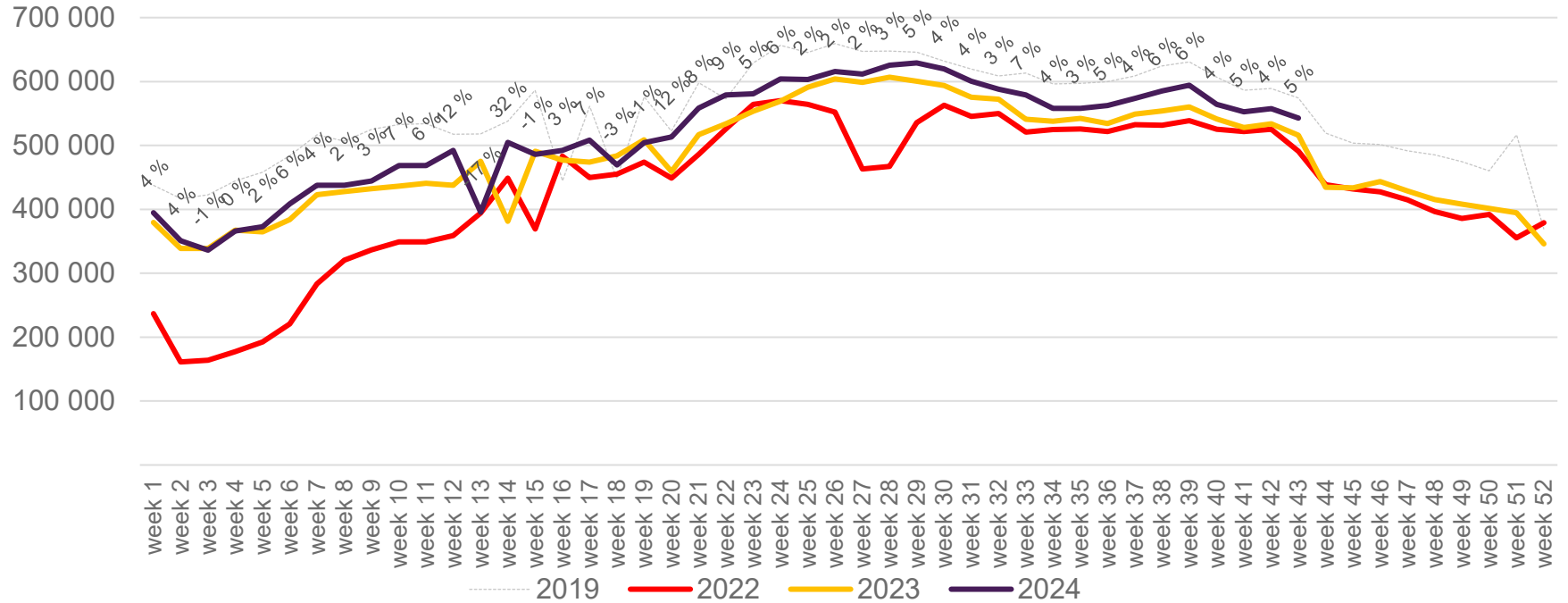


The change is measured against the same week in 2023

Source: SIA, Avinor Statistics

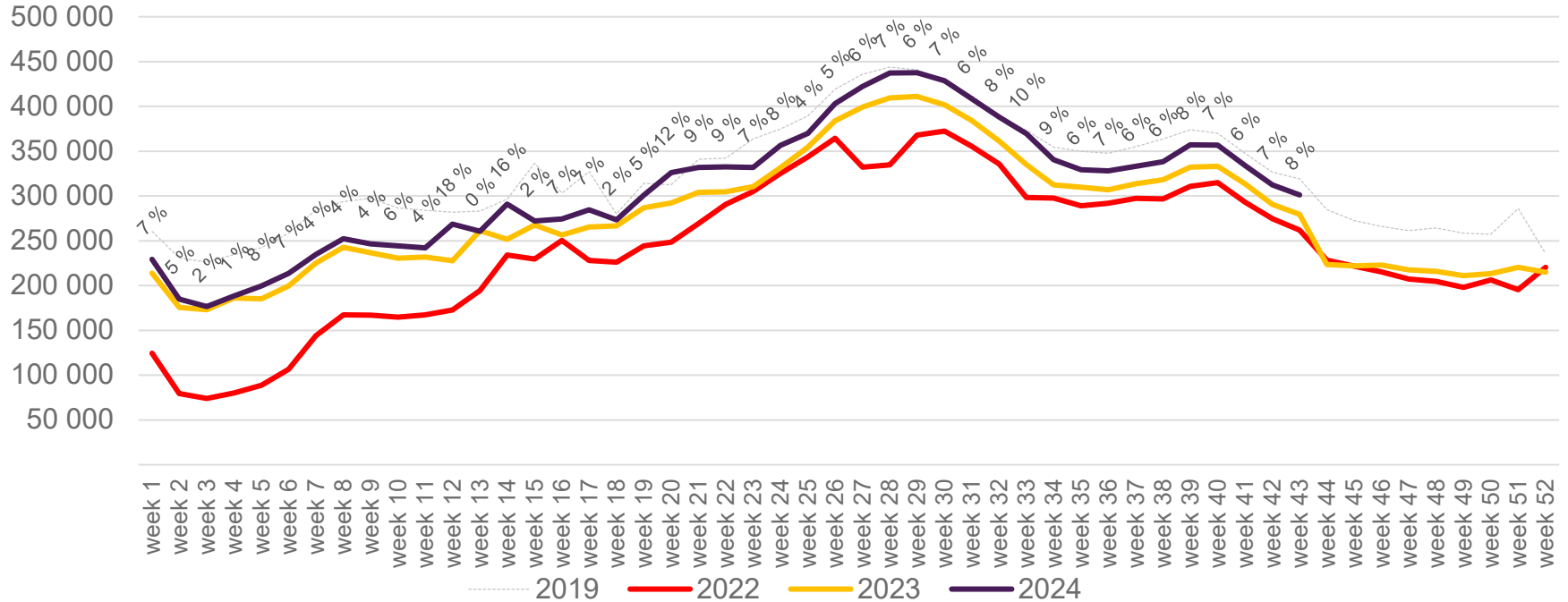
Passengers OSL total per week

The change is measured against the same week in 2023



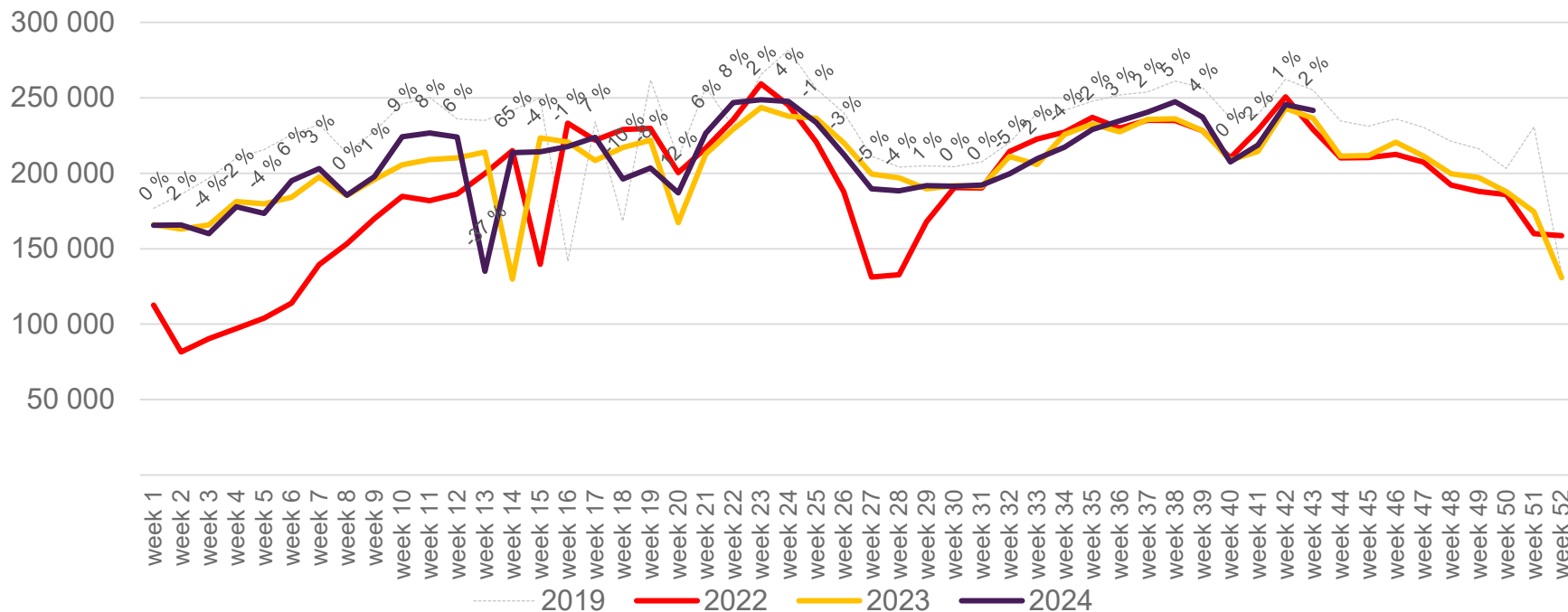
Passengers OSL international per week

The change is measured against the same week in 2023

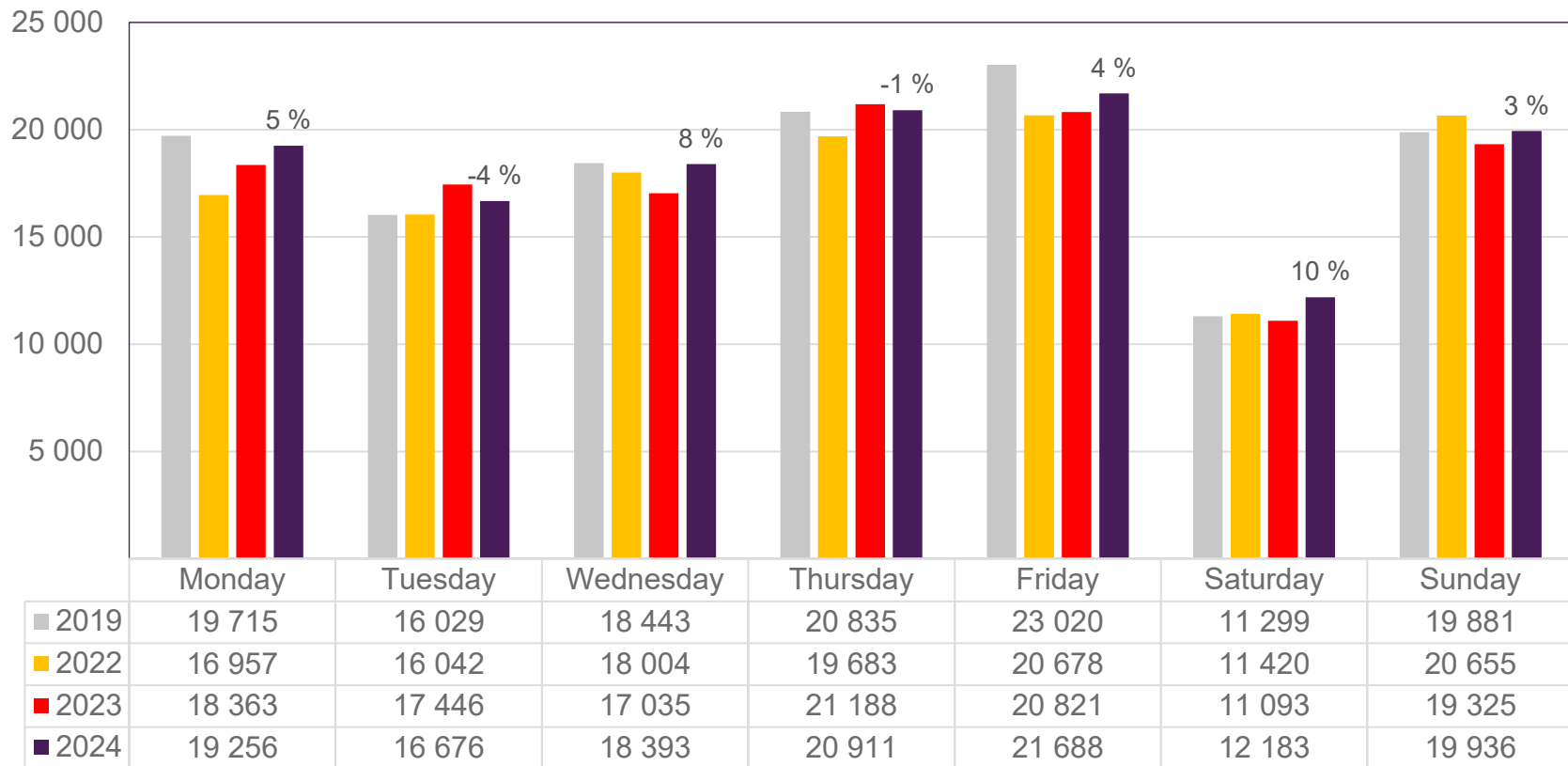


Passengers OSL domestic per week

The change is measured against the same week in 2023



Passengers BGO total per day, week 43

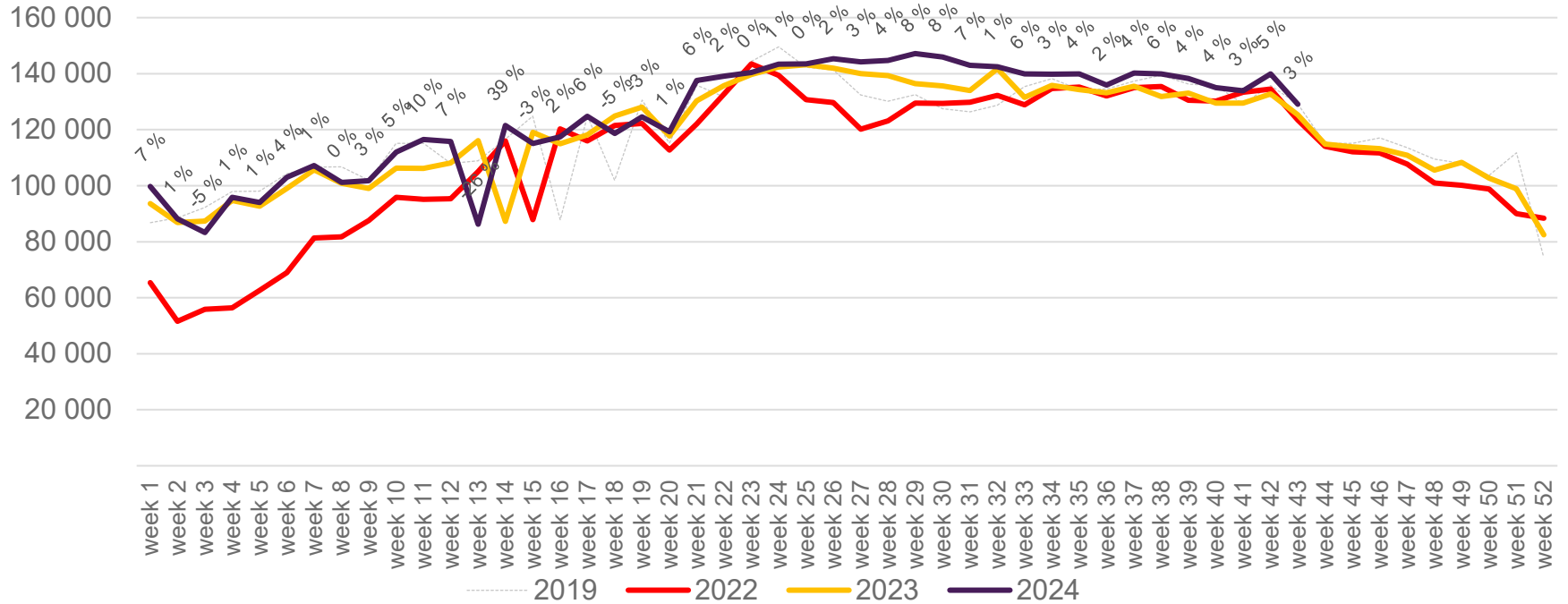


The change is measured against the same week in 2023

Source: SIA, Avinor Statistics

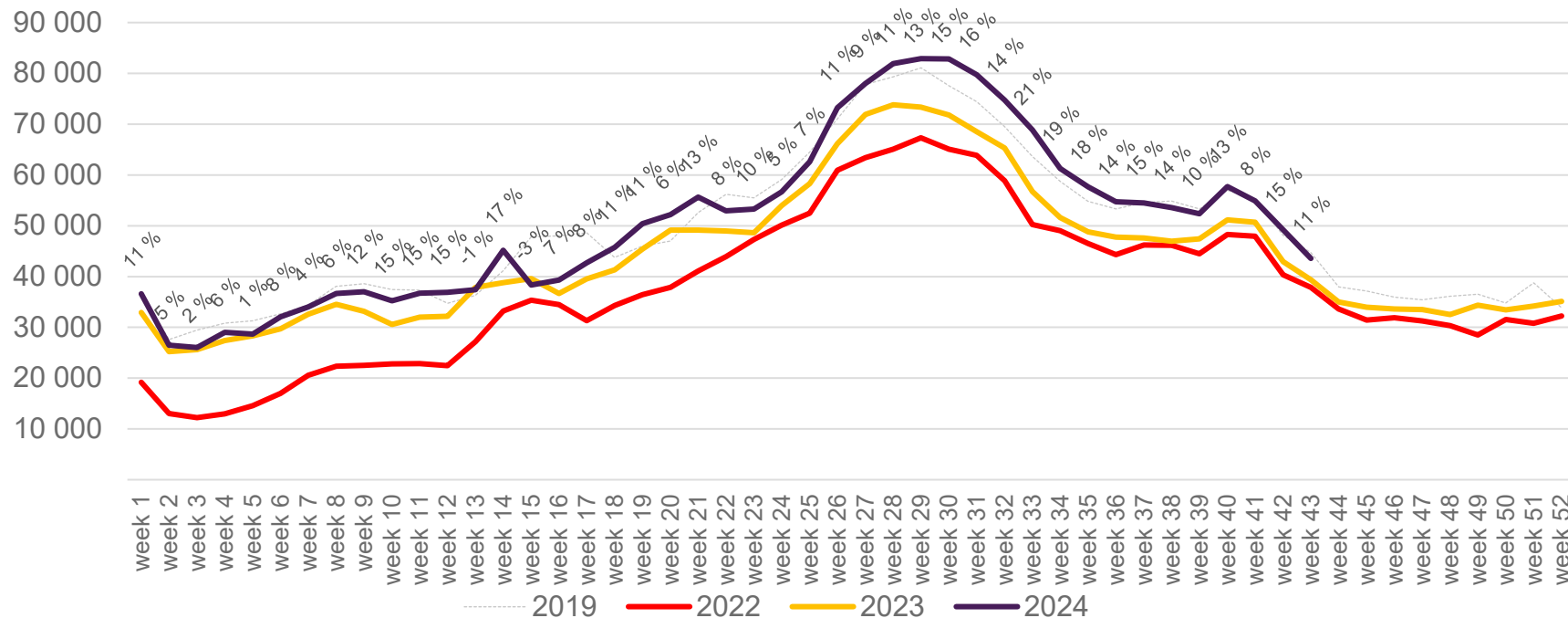
Passengers BGO total per week

The change is measured against the same week in 2023



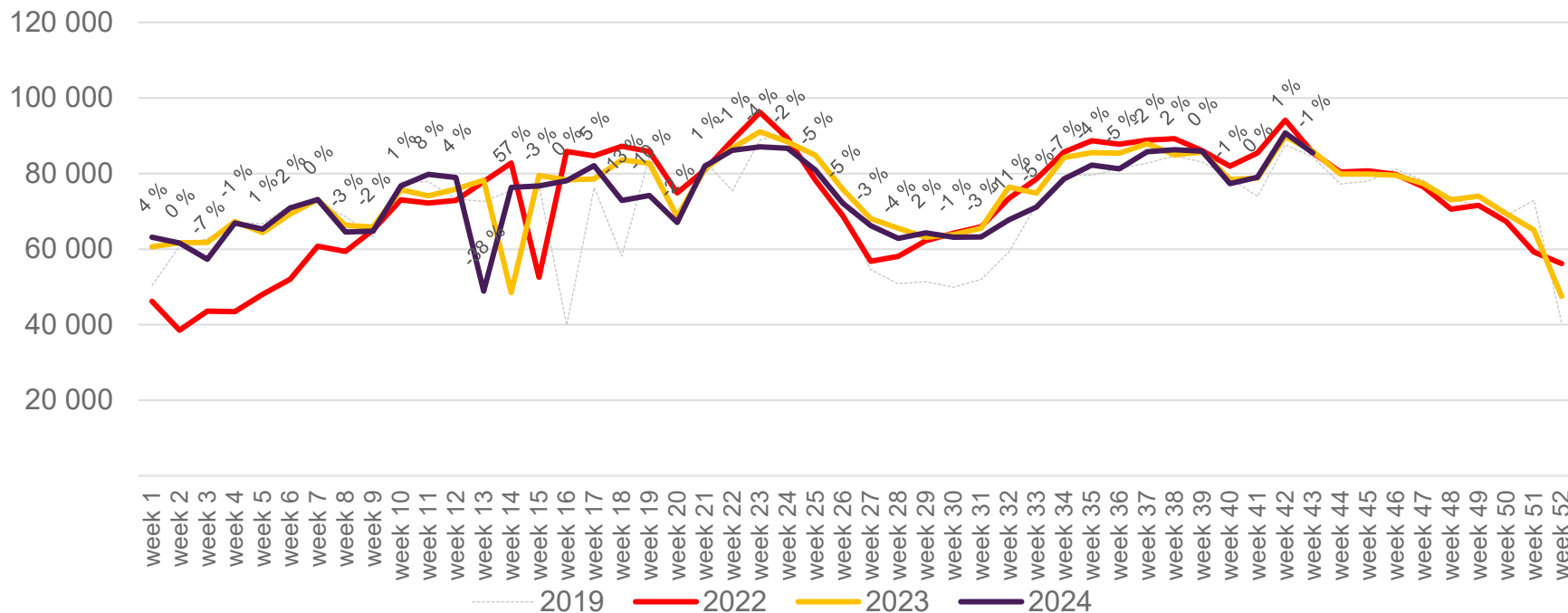
Passengers BGO international per week

The change is measured against the same week in 2023

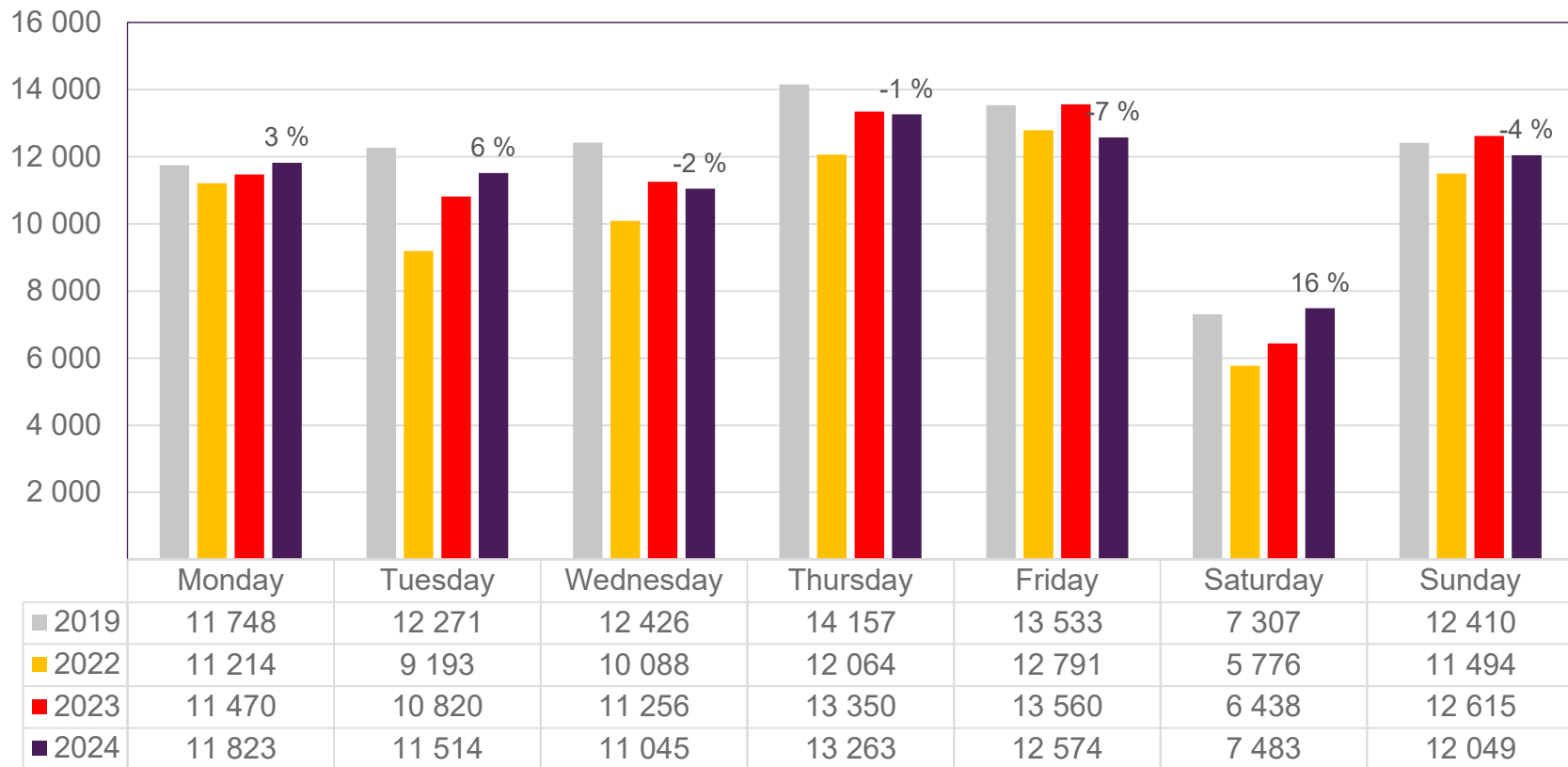


Passengers BGO domestic per week

The change is measured against the same week in 2023



Passengers SVG total per day, week 43

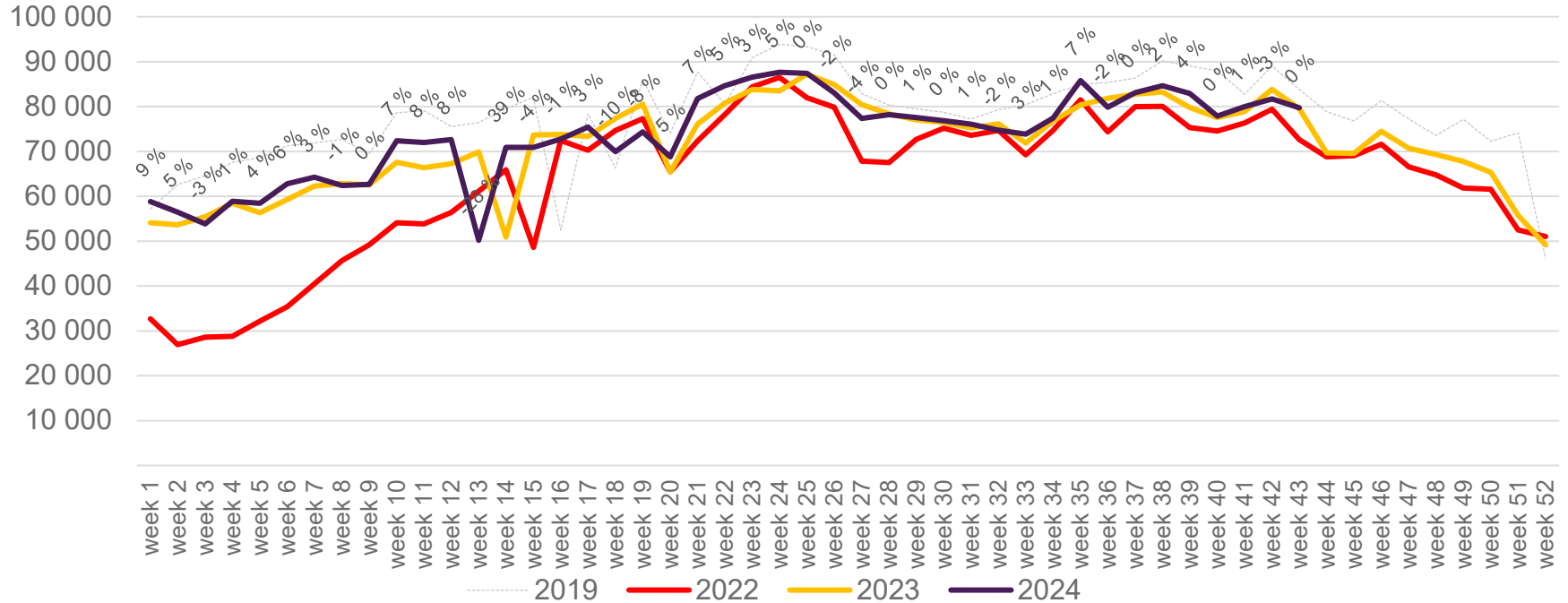


The change is measured against the same week in 2023

Source: SIA, Avinor Statistics

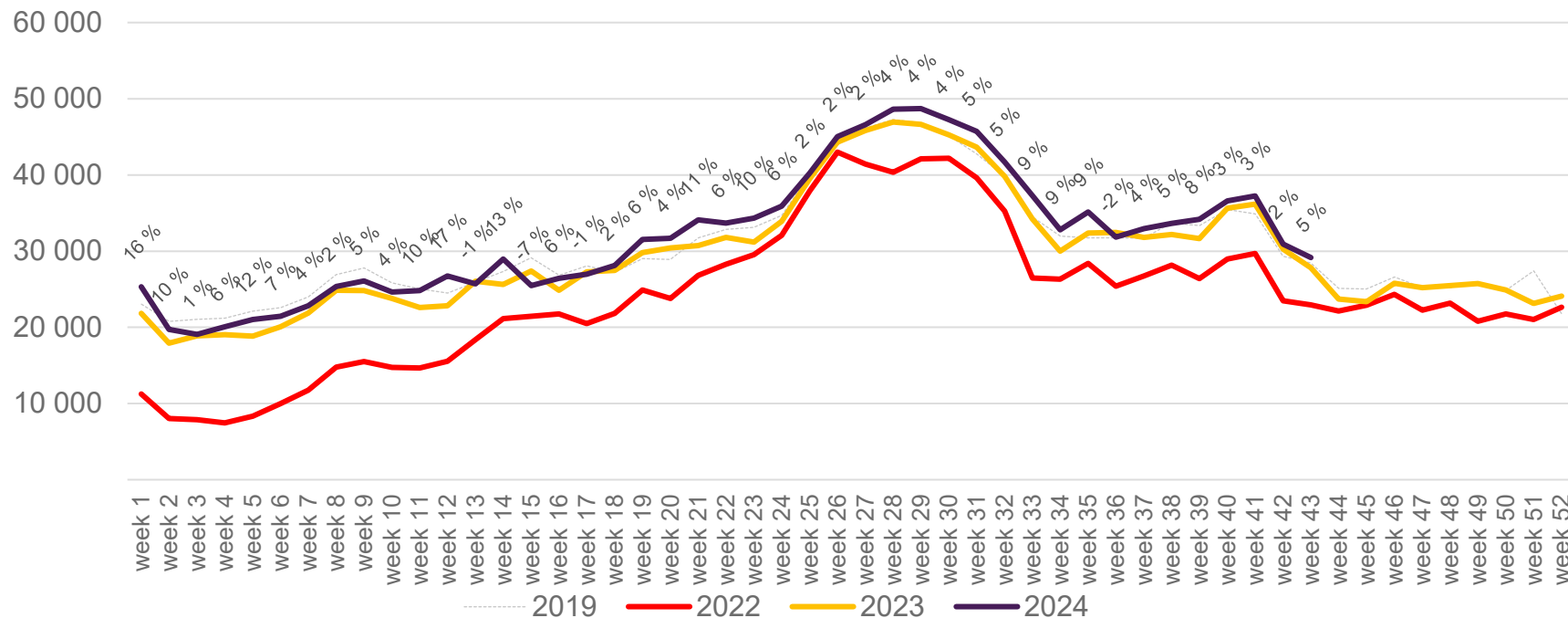
Passengers SVG total per week

The change is measured against the same week in 2023



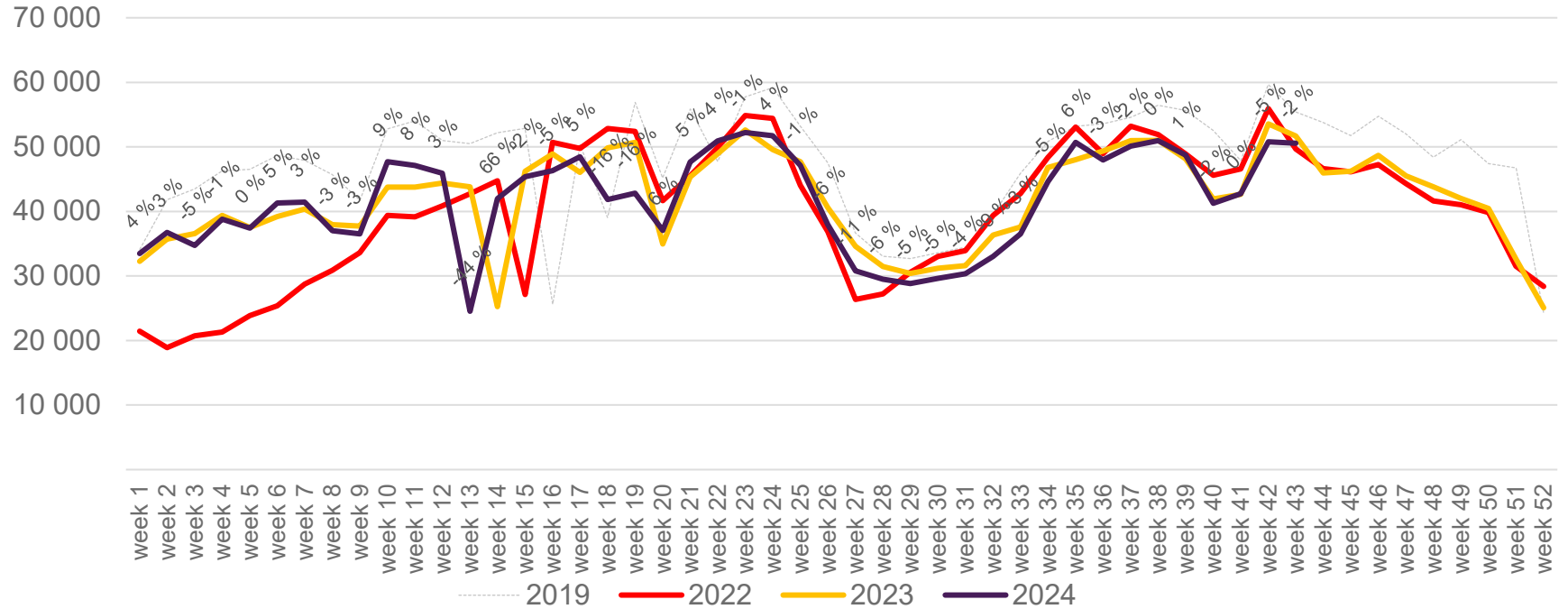
Passengers SVG international per week

The change is measured against the same week in 2023

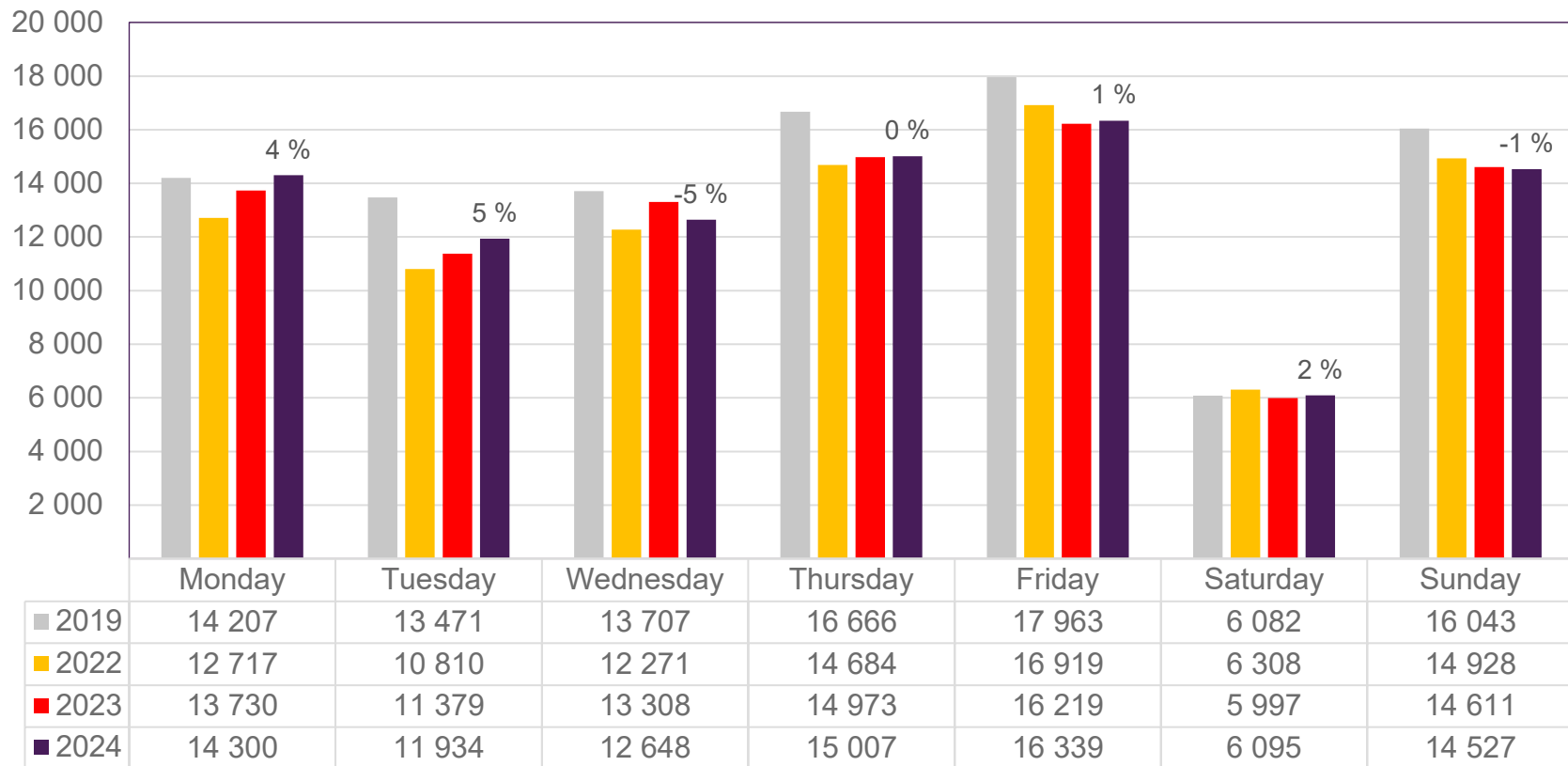


Passengers SVG domestic per week

The change is measured against the same week in 2023



Passengers TRD total per day, week 43

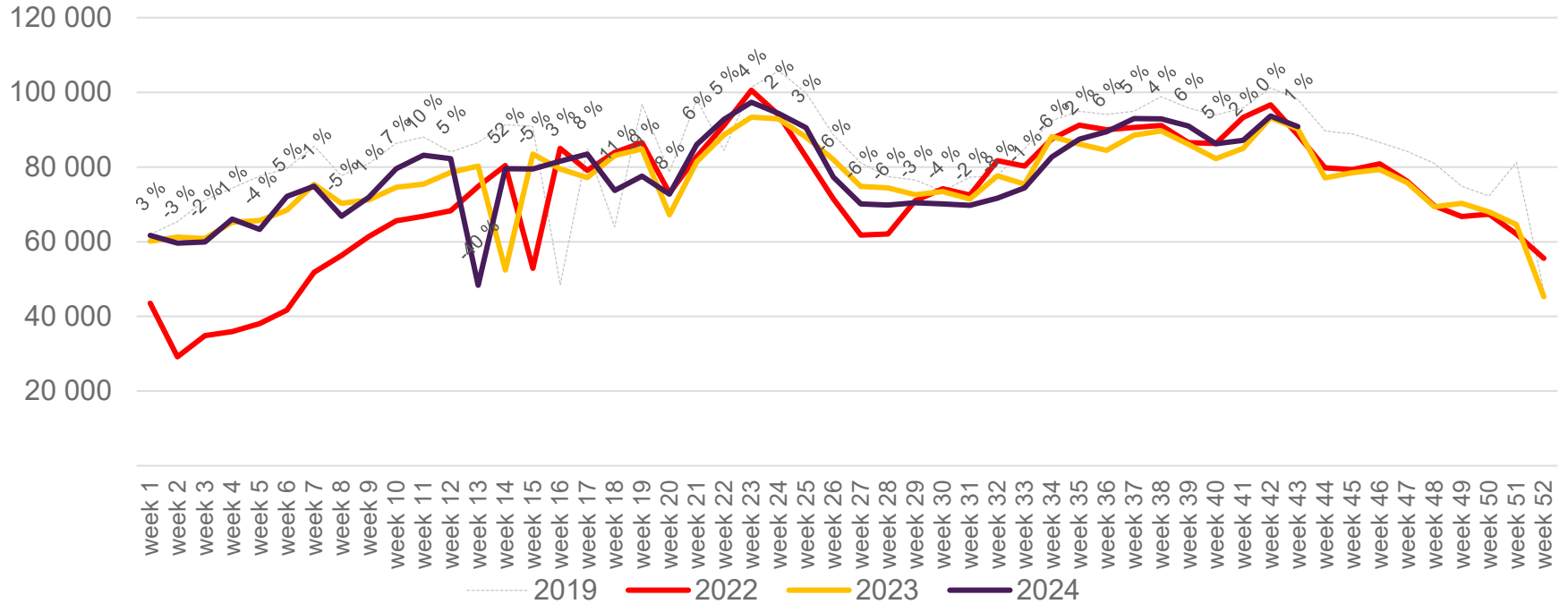


The change is measured against the same week in 2023

Source: SIA, Avinor Statistics

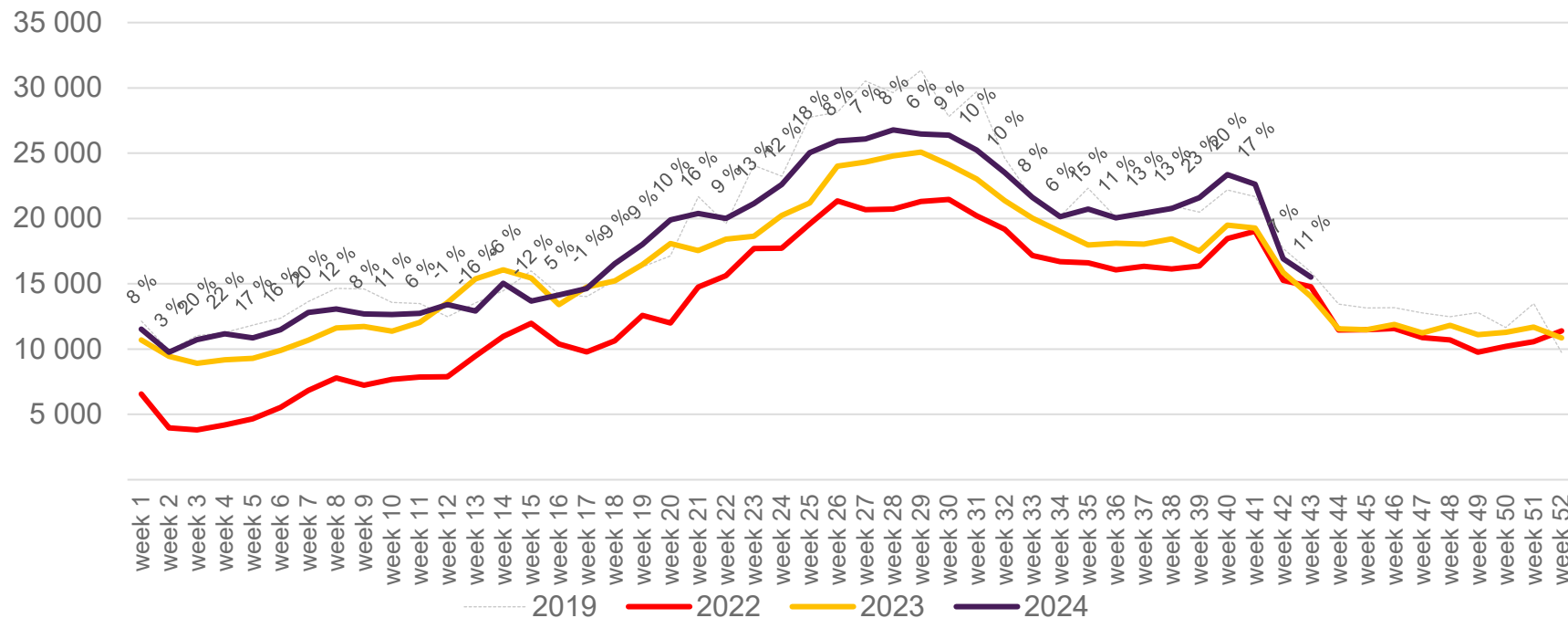
Passengers TRD total per week

The change is measured against the same week in 2023



Passengers TRD international per week

The change is measured against the same week in 2023



Passengers TRD domestic per week

The change is measured against the same week in 2023

