



Passenger numbers per week

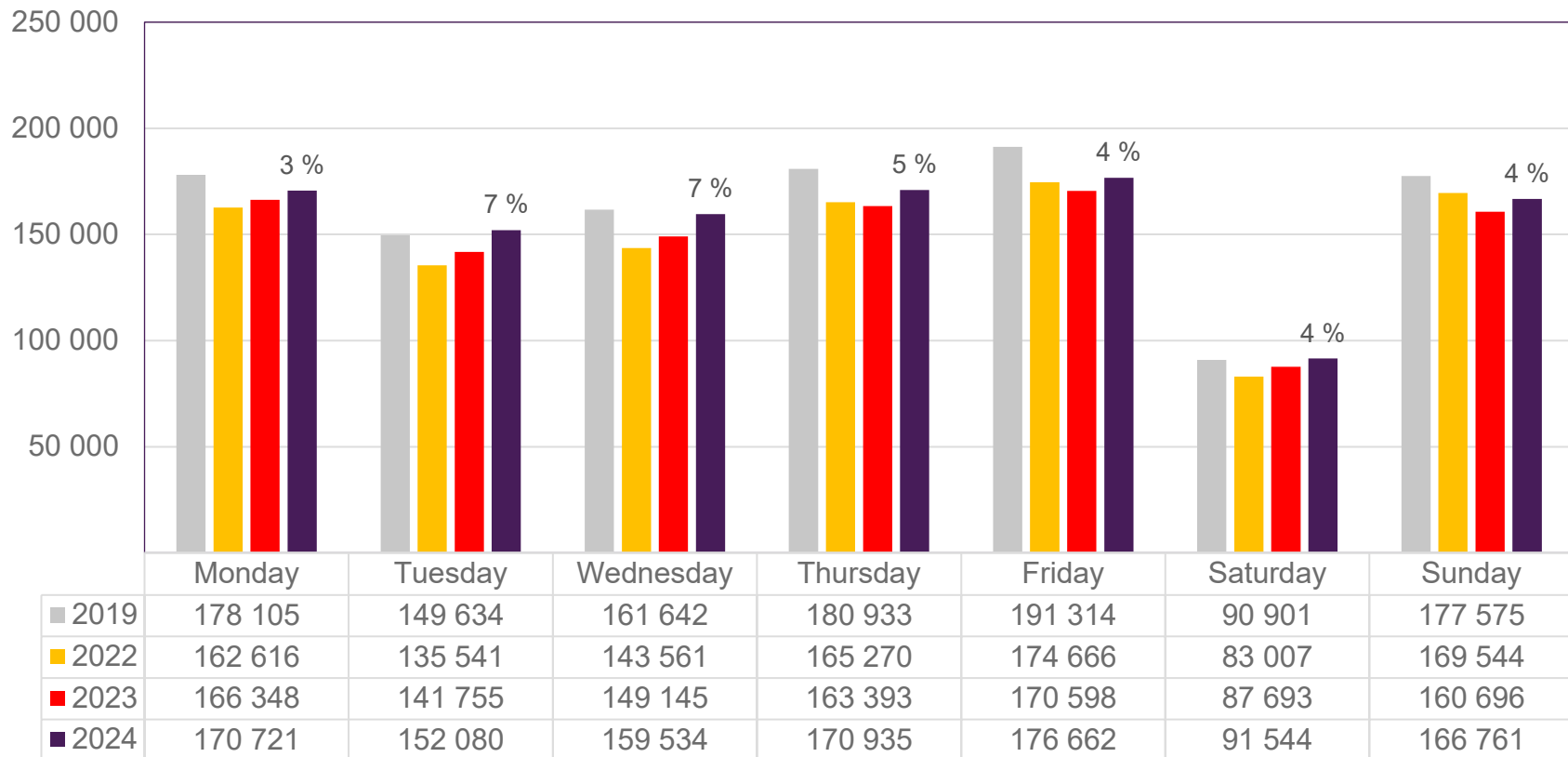
Preliminary figures

- The figures for the previous week are preliminary. It takes some time for all passenger numbers to be reported, so the figures for the previous week may be lower than the final figures.
- The figures are taken from SIA, Avinor's traffic database.

Top 10 airports, total week 42

Airport	2019	2022	2023	2024	2024 vs. 2023	
					Change	Change %
Oslo/Gardermoen	588 962	525 235	533 828	557 753	23 925	4 %
Bergen/Flesland	135 746	134 523	132 810	139 936	7 126	5 %
Trondheim/Værnes	101 238	96 642	93 236	93 813	577	1 %
Stavanger/Sola	89 023	79 429	83 825	81 721	-2 104	-3 %
Tromsø/Langnes	44 444	43 263	42 961	50 982	8 021	19 %
Bodø	37 624	36 409	34 611	38 533	3 922	11 %
Ålesund/Vigra	25 799	22 074	22 704	21 669	-1 035	-5 %
Kristiansand/Kjevik	24 480	19 116	18 388	18 873	485	3 %
Harstad/Narvik/Evenes	14 063	15 470	15 436	16 086	650	4 %
Bardufoss	4 431	3 508	3 875	3 606	-269	-7 %

Passengers Avinor total per day, week 42

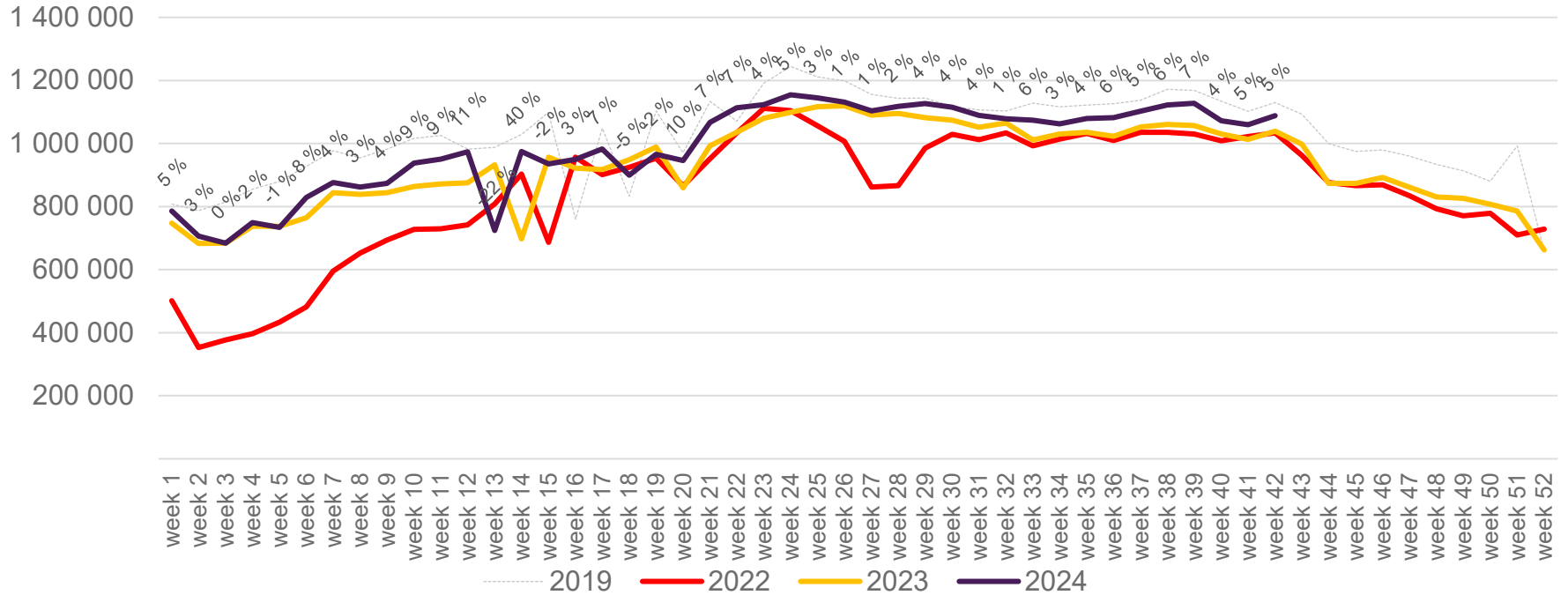


The change is measured against the same week in 2023

Source: SIA, Avinor Statistics

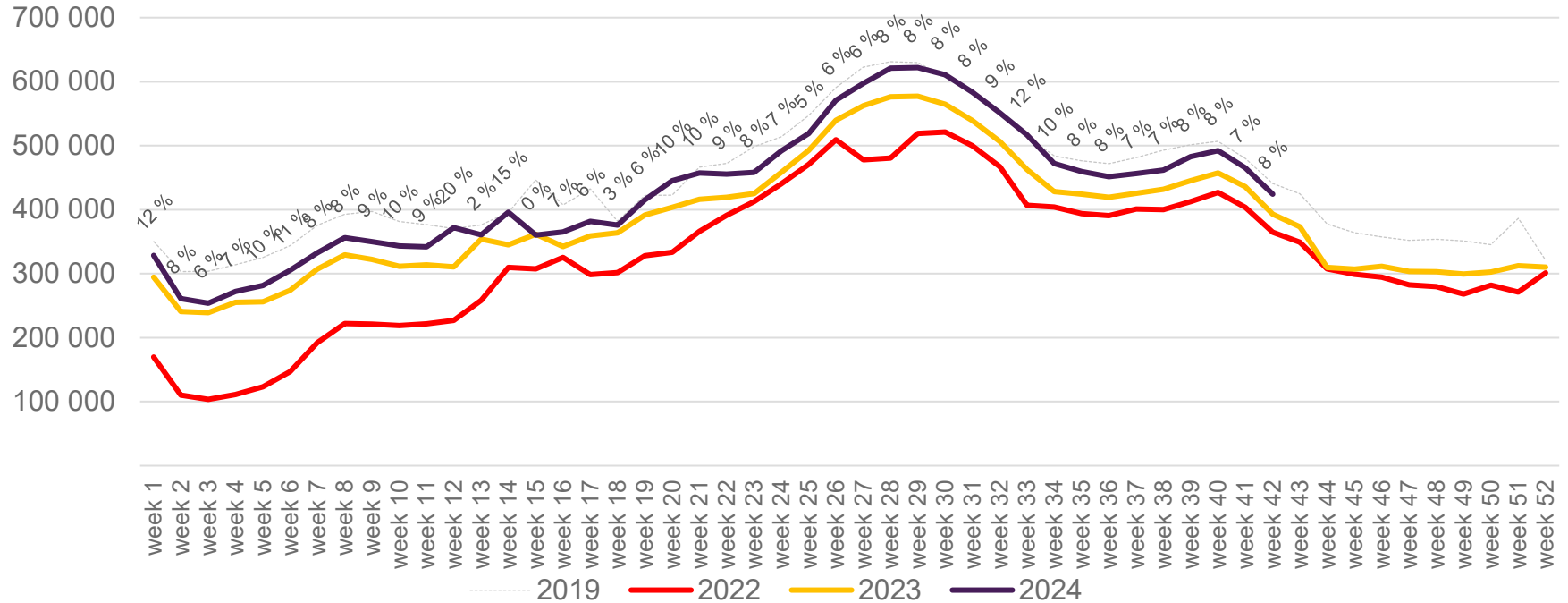
Passengers Avinor total per week

The change is measured against the same week in 2023



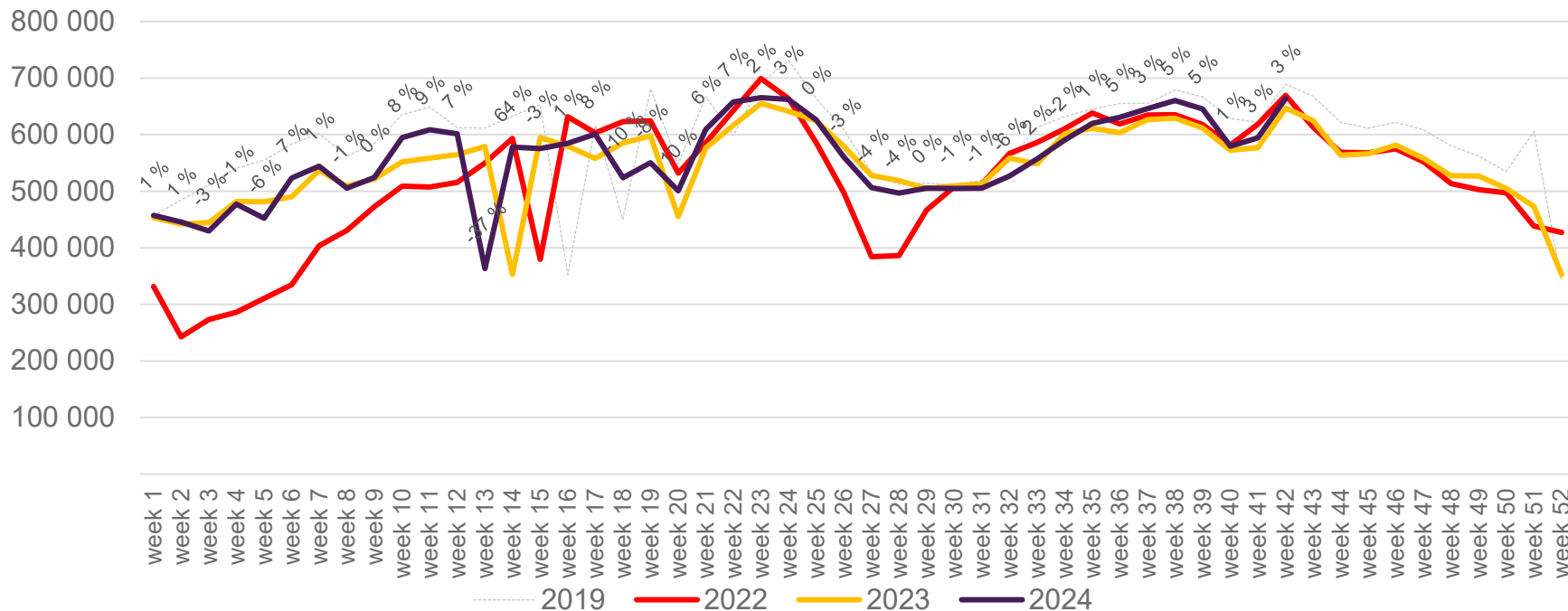
Passengers Avinor international per week

The change is measured against the same week in 2023

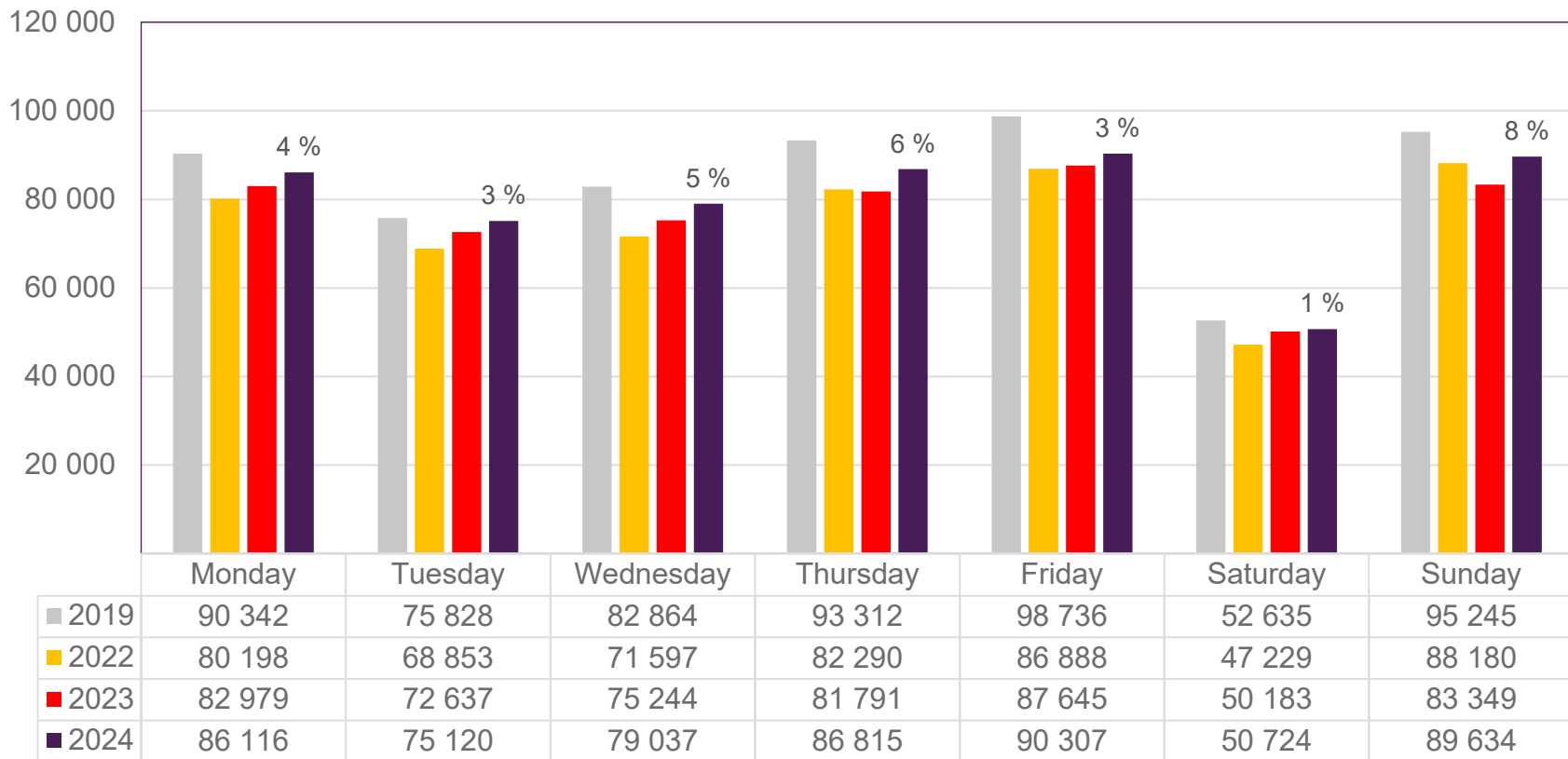


Passengers Avinor domestic per week

The change is measured against the same week in 2023



Passengers OSL total per day, week 42

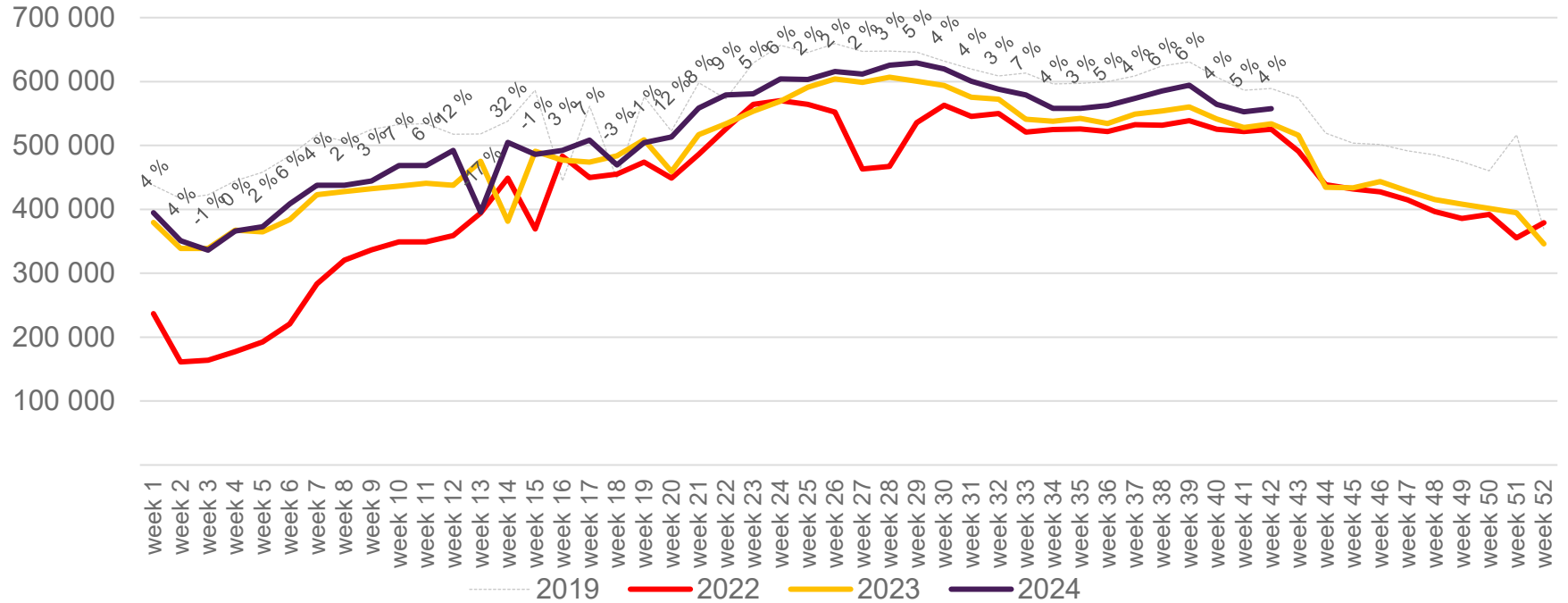


The change is measured against the same week in 2023

Source: SIA, Avinor Statistics

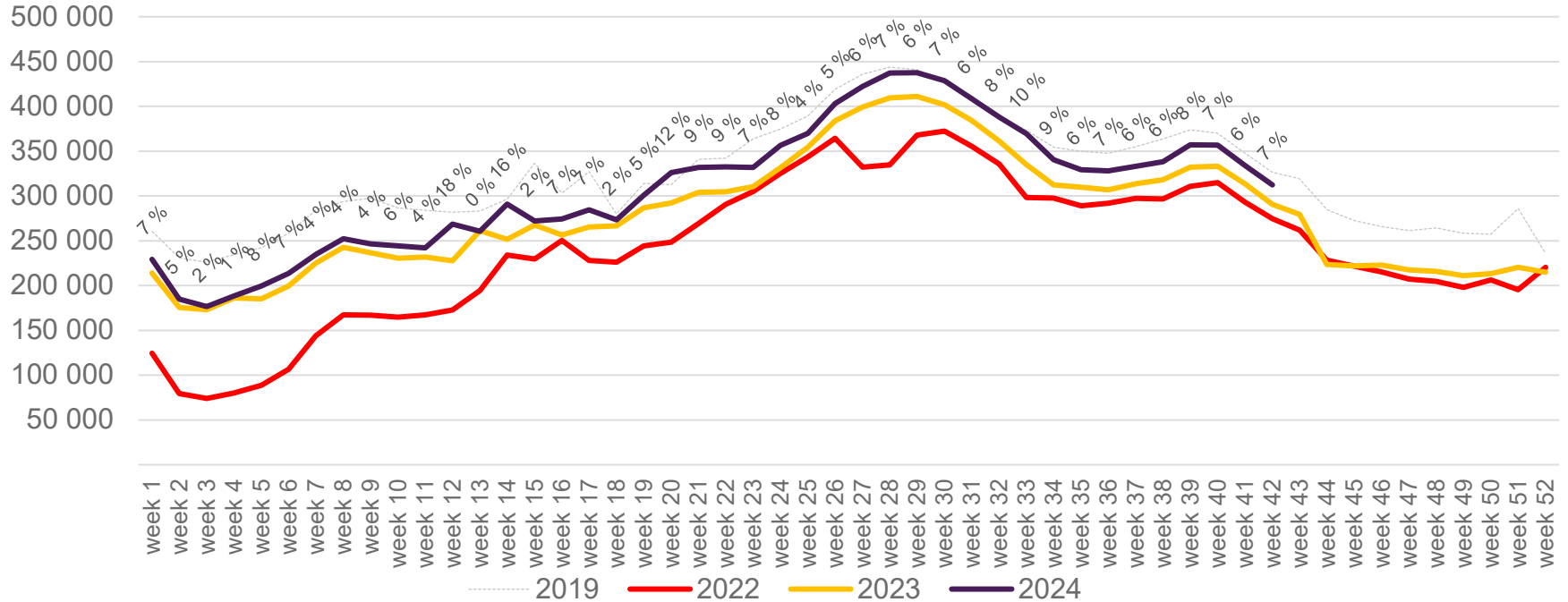
Passengers OSL total per week

The change is measured against the same week in 2023



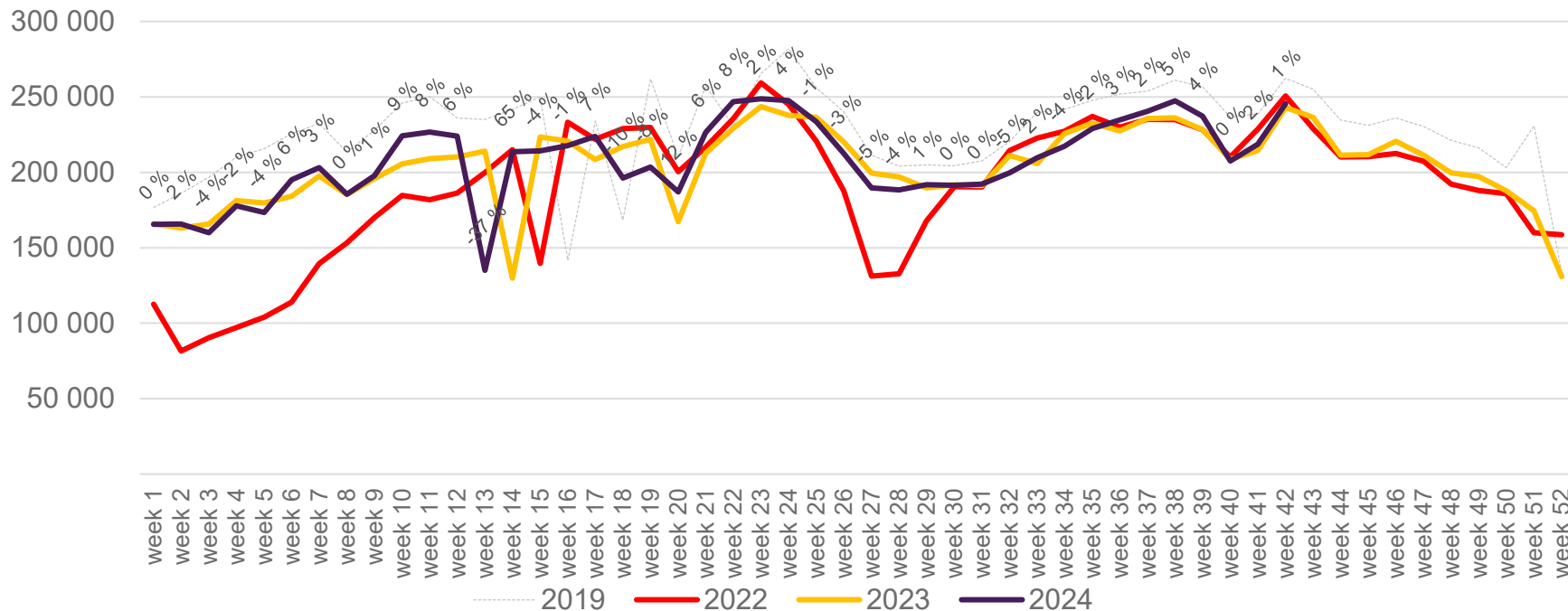
Passengers OSL international per week

The change is measured against the same week in 2023

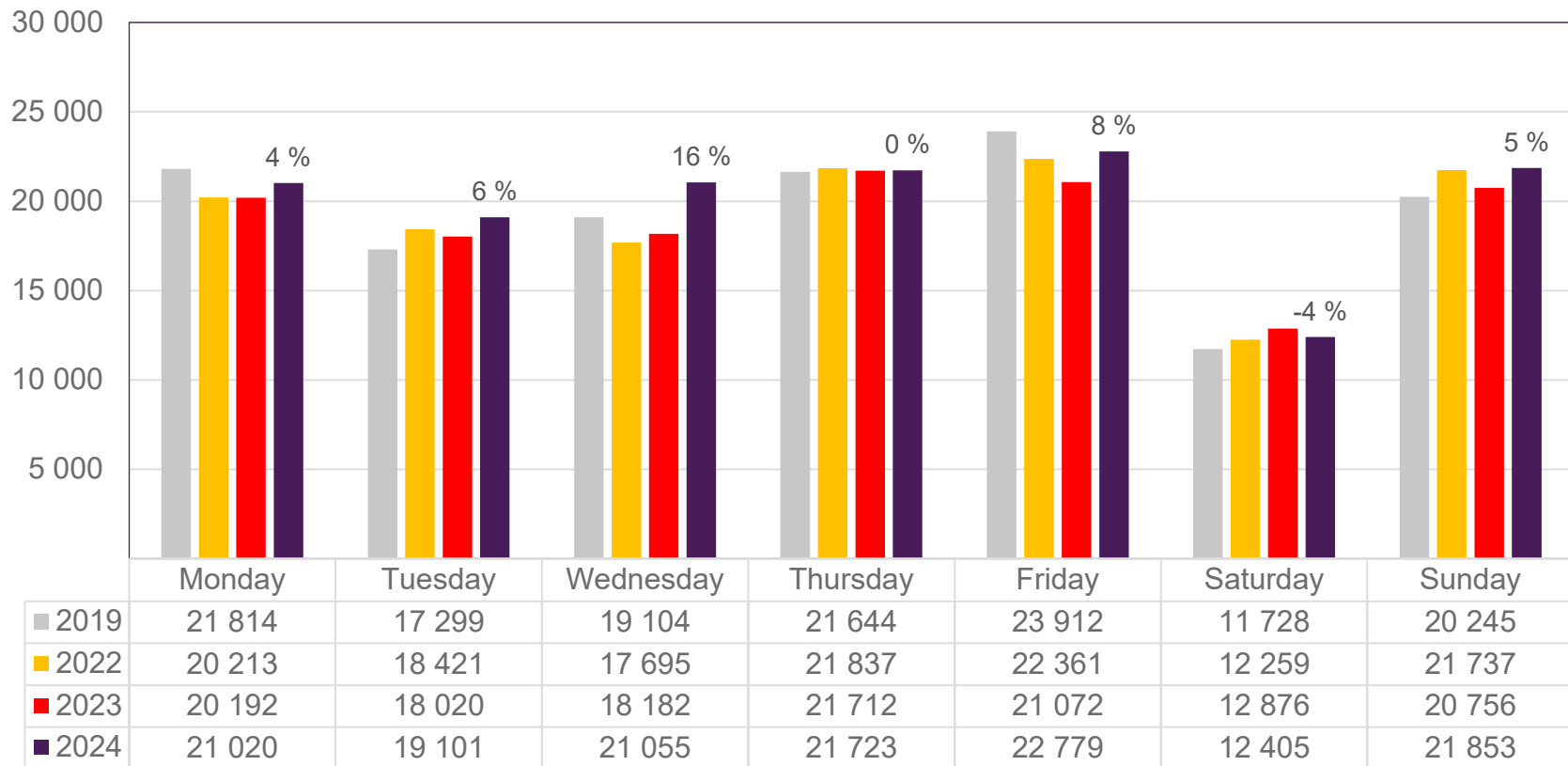


Passengers OSL domestic per week

The change is measured against the same week in 2023



Passengers BGO total per day, week 42

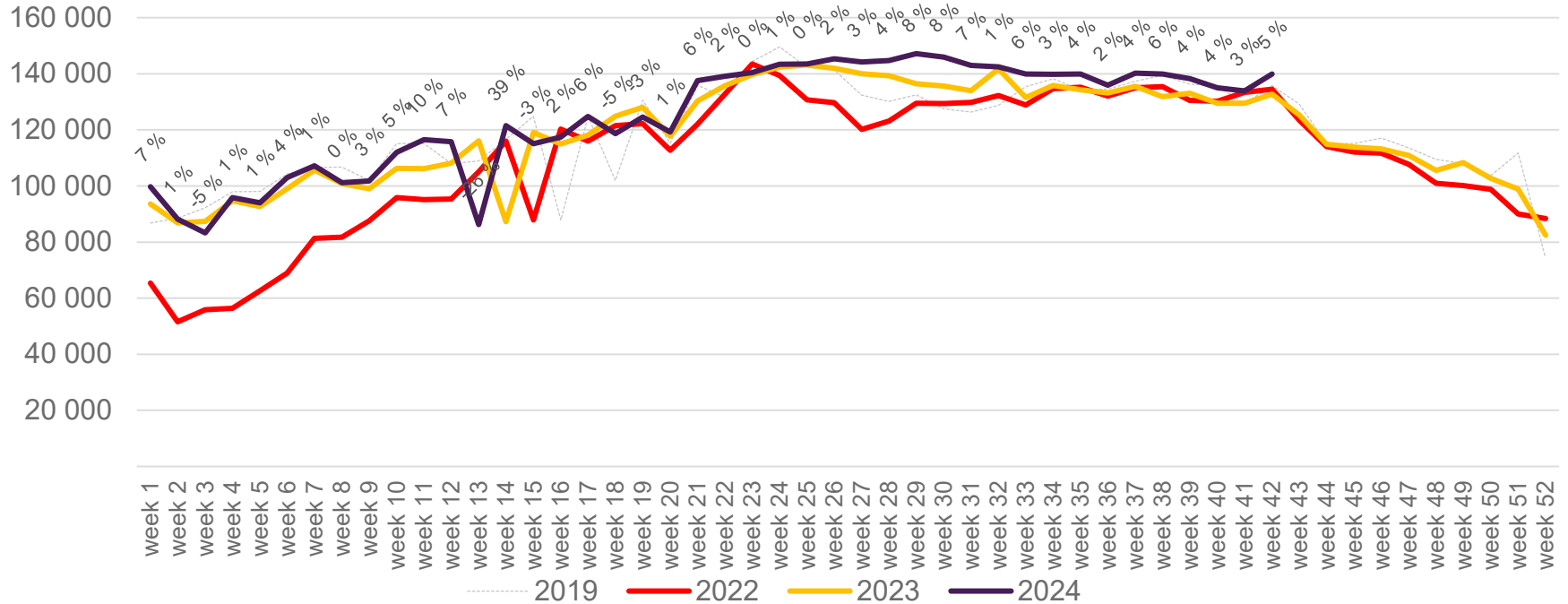


The change is measured against the same week in 2023

Source: SIA, Avinor Statistics

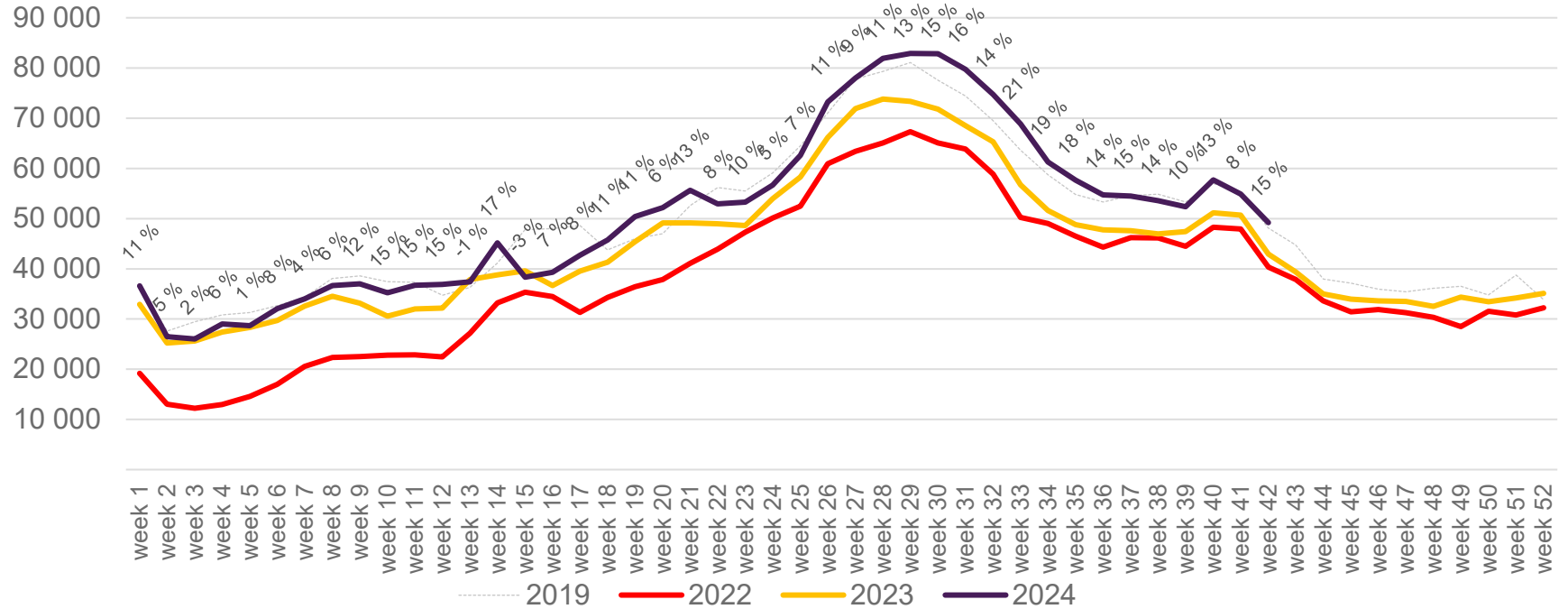
Passengers BGO total per week

The change is measured against the same week in 2023



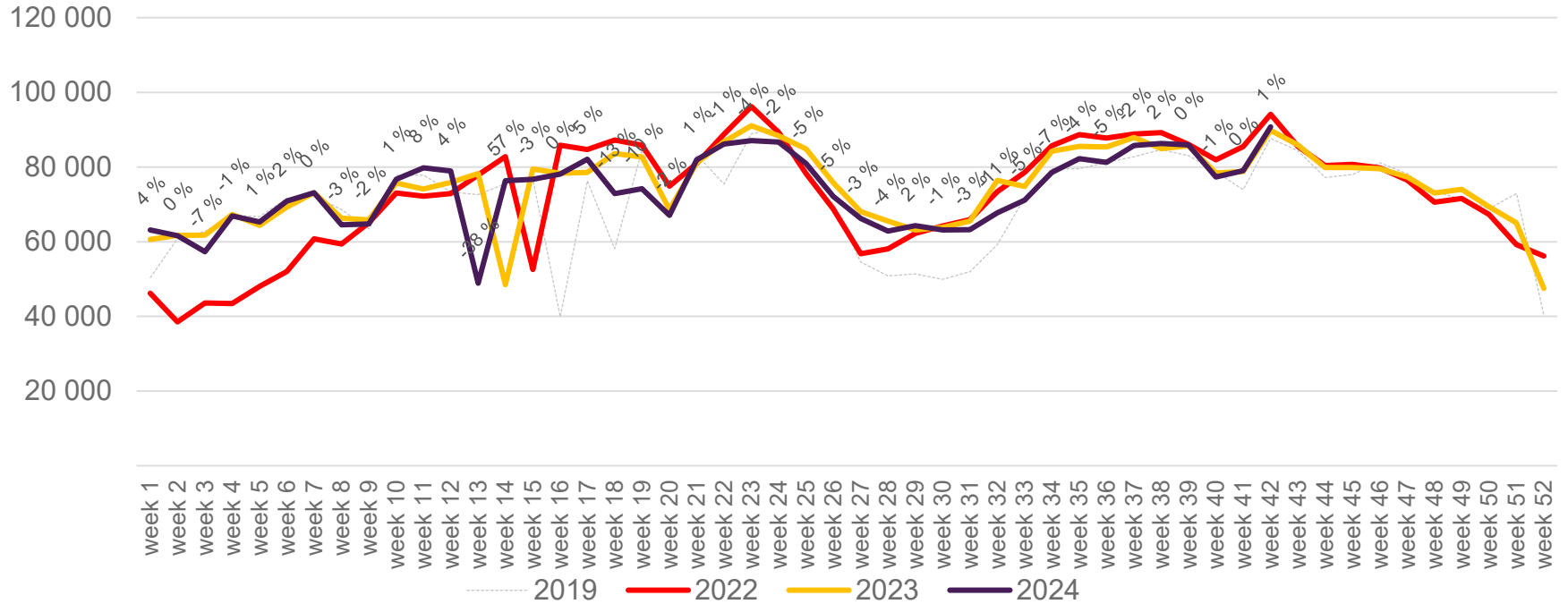
Passengers BGO international per week

The change is measured against the same week in 2023

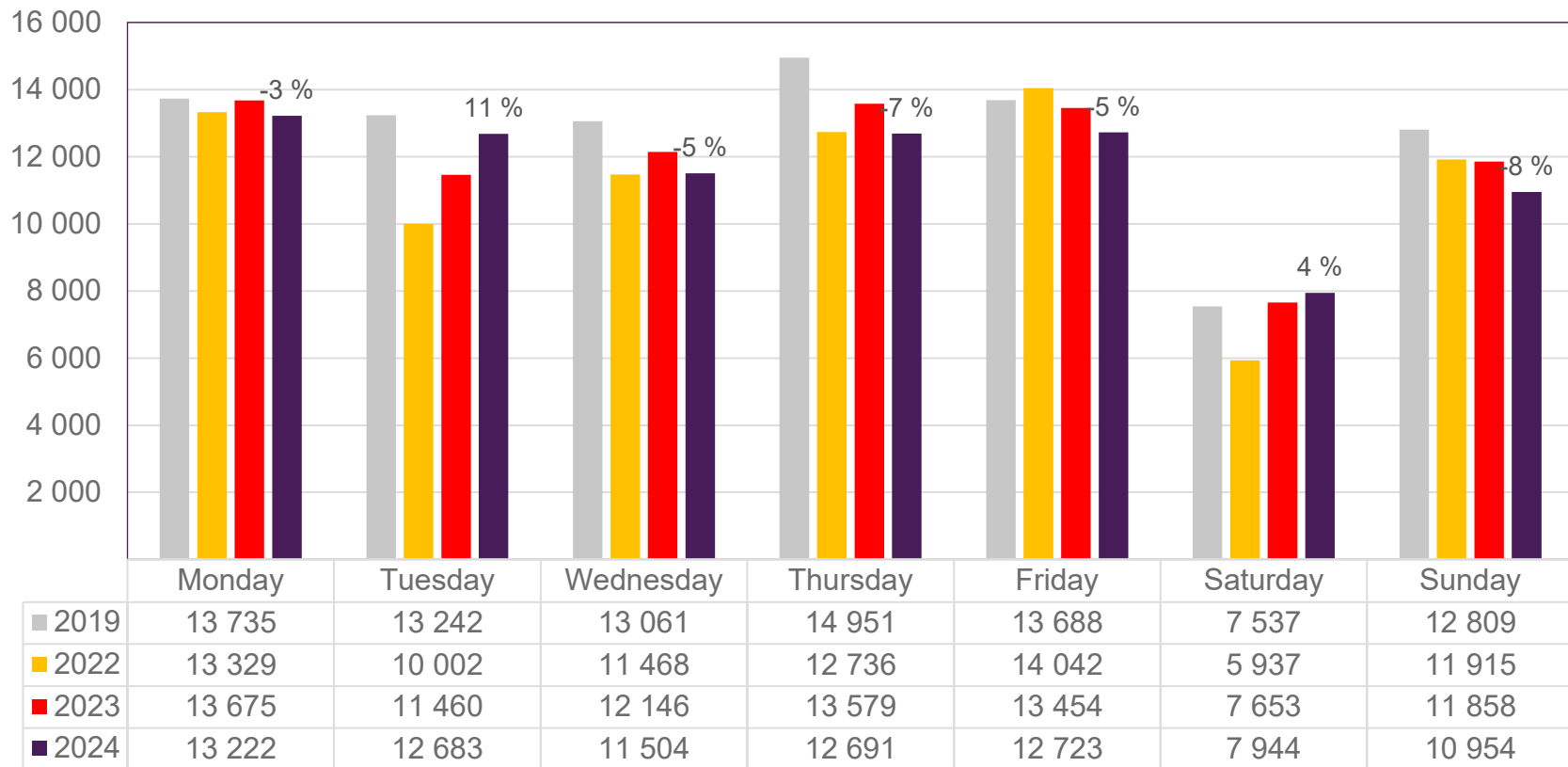


Passengers BGO domestic per week

The change is measured against the same week in 2023



Passengers SVG total per day, week 42

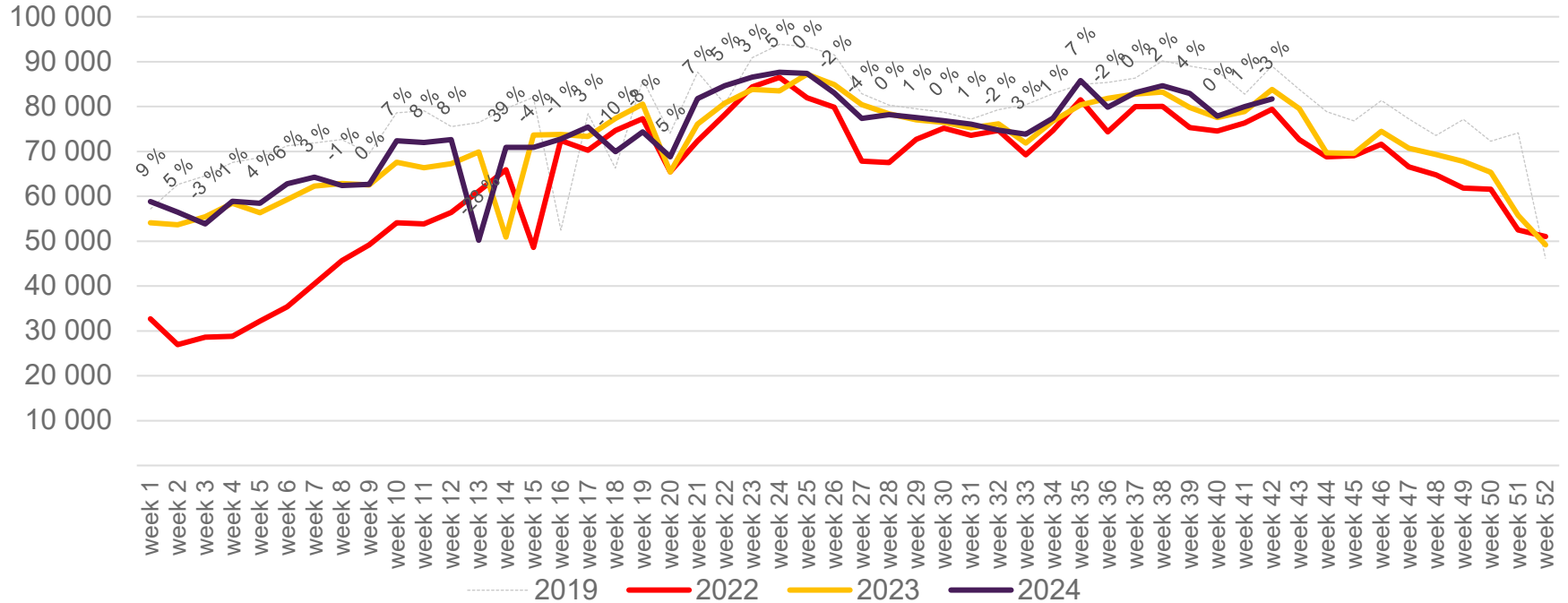


The change is measured against the same week in 2023

Source: SIA, Avinor Statistics

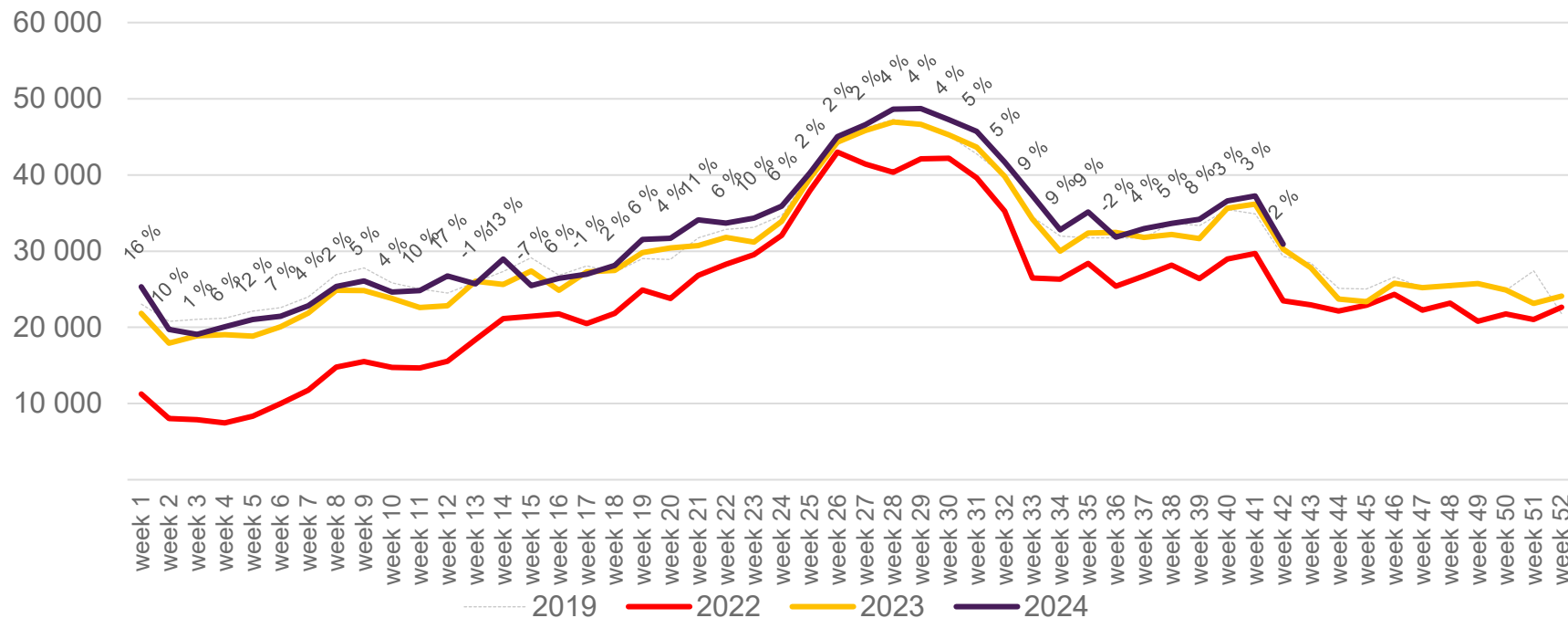
Passengers SVG total per week

The change is measured against the same week in 2023



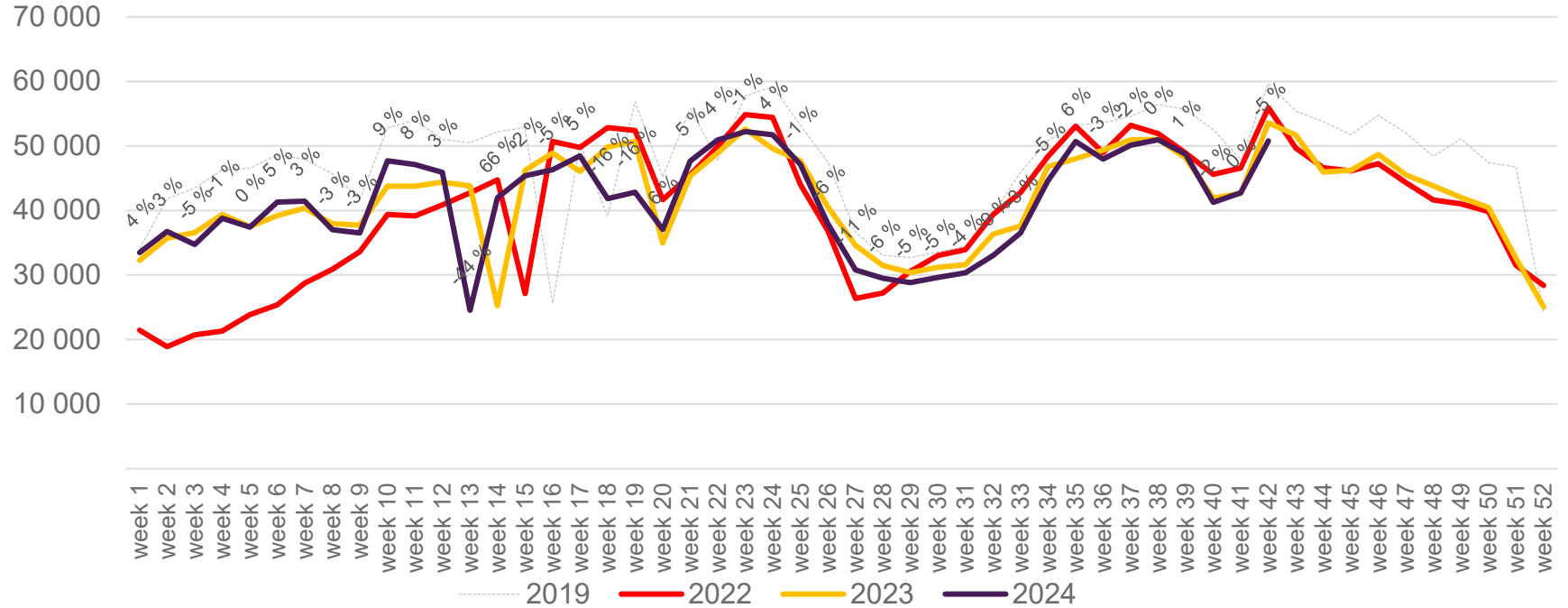
Passengers SVG international per week

The change is measured against the same week in 2023

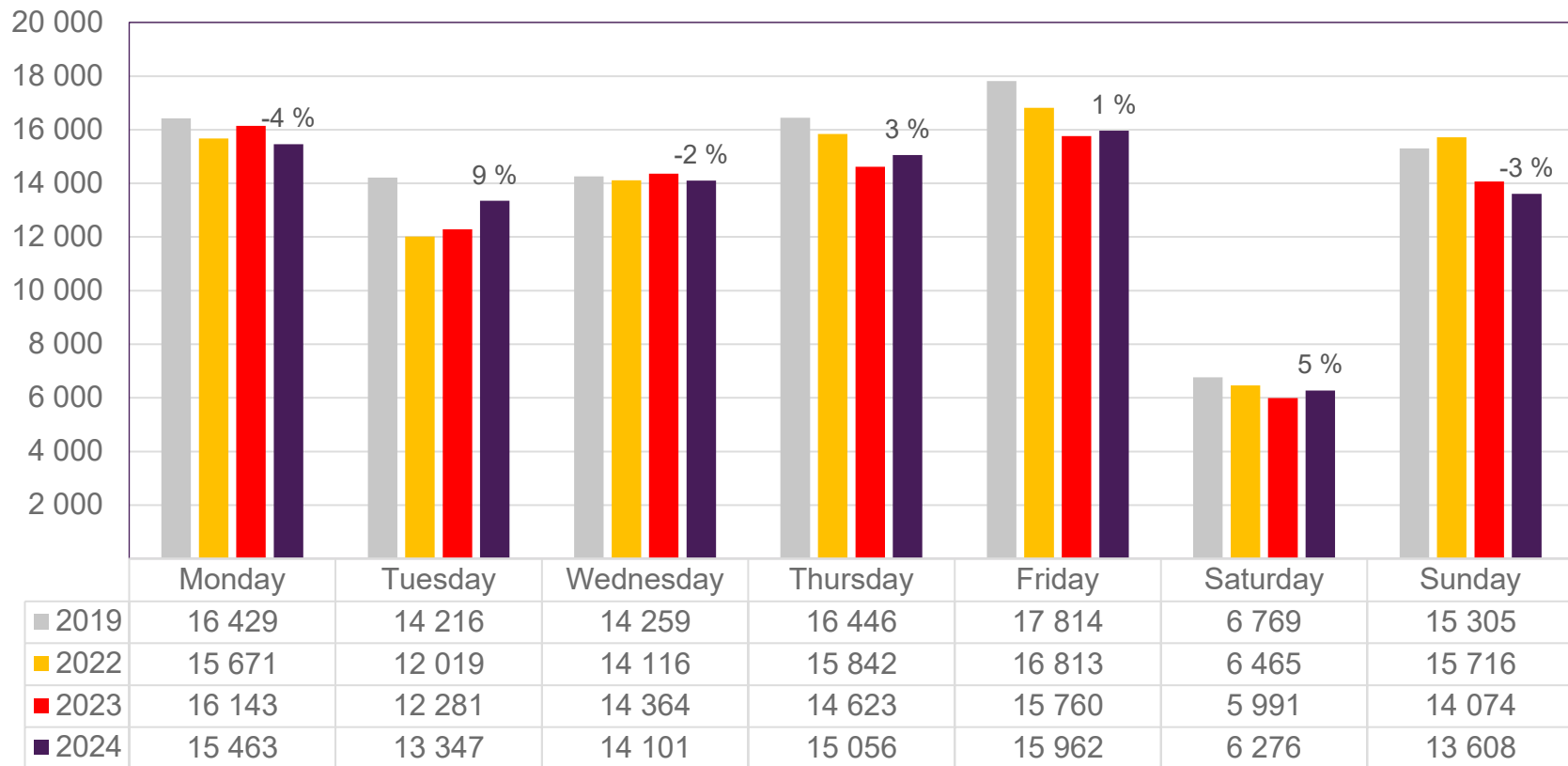


Passengers SVG domestic per week

The change is measured against the same week in 2023



Passengers TRD total per day, week 42

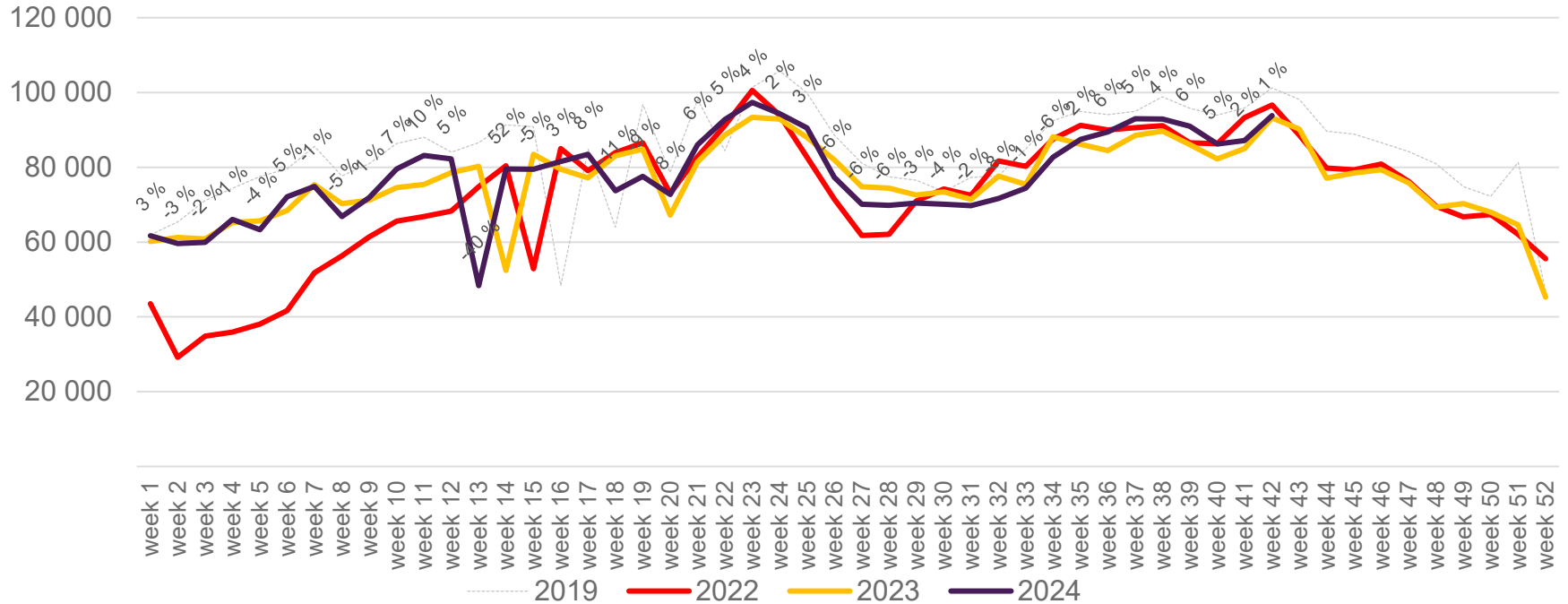


The change is measured against the same week in 2023

Source: SIA, Avinor Statistics

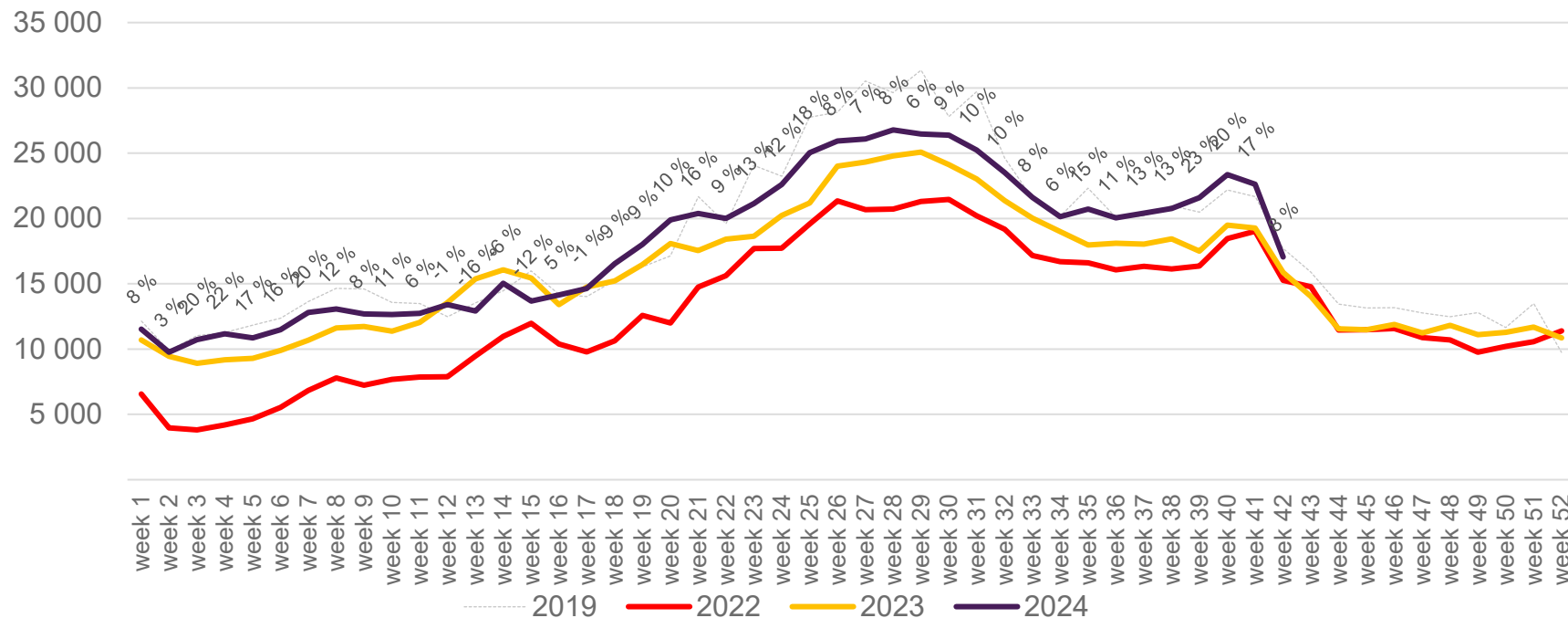
Passengers TRD total per week

The change is measured against the same week in 2023



Passengers TRD international per week

The change is measured against the same week in 2023



Passengers TRD domestic per week

The change is measured against the same week in 2023

