



Passenger numbers per week

## Preliminary figures

- The figures for the previous week are preliminary. It takes some time for all passenger numbers to be reported, so the figures for the previous week may be lower than the final figures.
- The figures are taken from SIA, Avinor's traffic database.

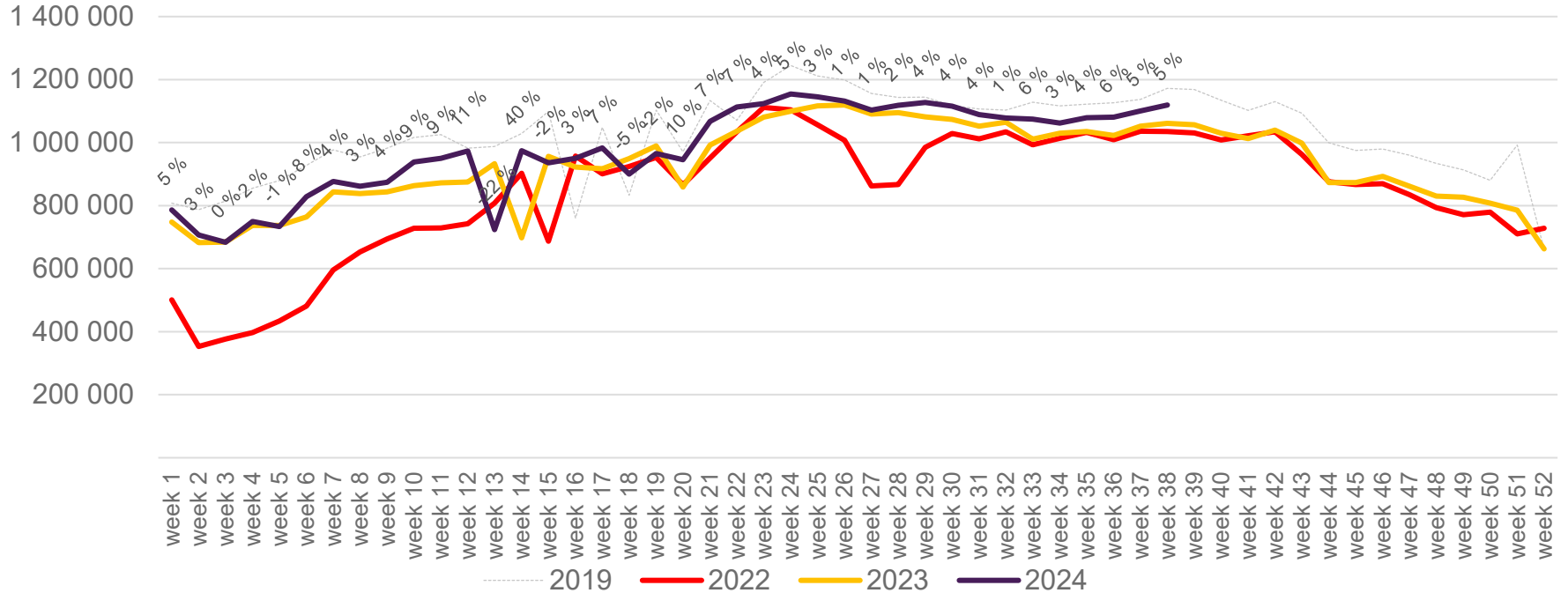
# Top 10 airports, total week 38

Airport	2019	2022	2023	2024	2024 vs. 2023	
					Change	Change %
Oslo/Gardermoen	624 654	531 673	554 249	584 481	30 232	5 %
Bergen/Flesland	139 514	135 392	131 868	139 377	7 509	6 %
Trondheim/Værnes	98 877	91 142	89 672	92 535	2 863	3 %
Stavanger/Sola	90 185	80 064	83 233	83 937	704	1 %
Tromsø/Langnes	44 174	43 684	43 811	47 814	4 003	9 %
Bodø	38 594	35 396	36 577	42 481	5 904	16 %
Ålesund/Vigra	25 292	21 209	23 058	22 818	-240	-1 %
Kristiansand/Kjevik	25 097	18 225	19 040	18 799	-241	-1 %
Harstad/Narvik/Evenes	14 685	15 847	16 784	17 918	1 134	7 %
Bardufoss	4 868	4 263	4 019	4 210	191	5 %



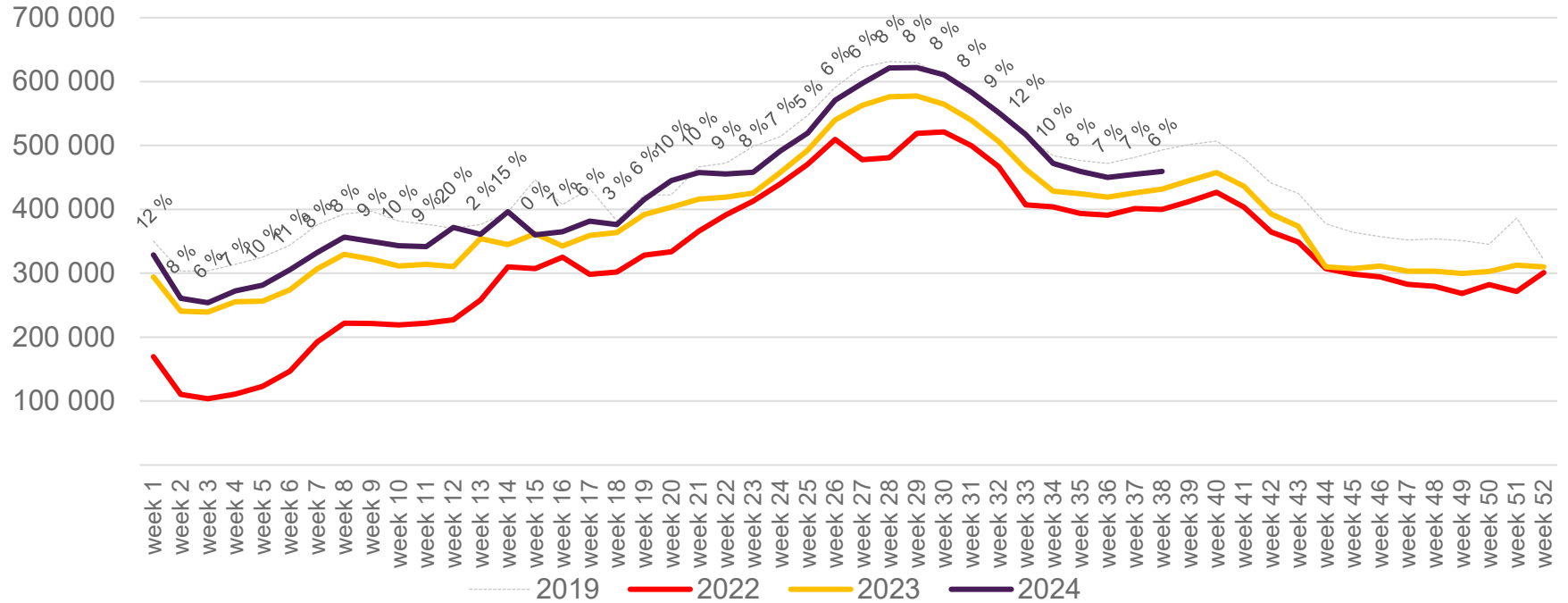
# Passengers Avinor total per week

The change is measured against the same week in 2023



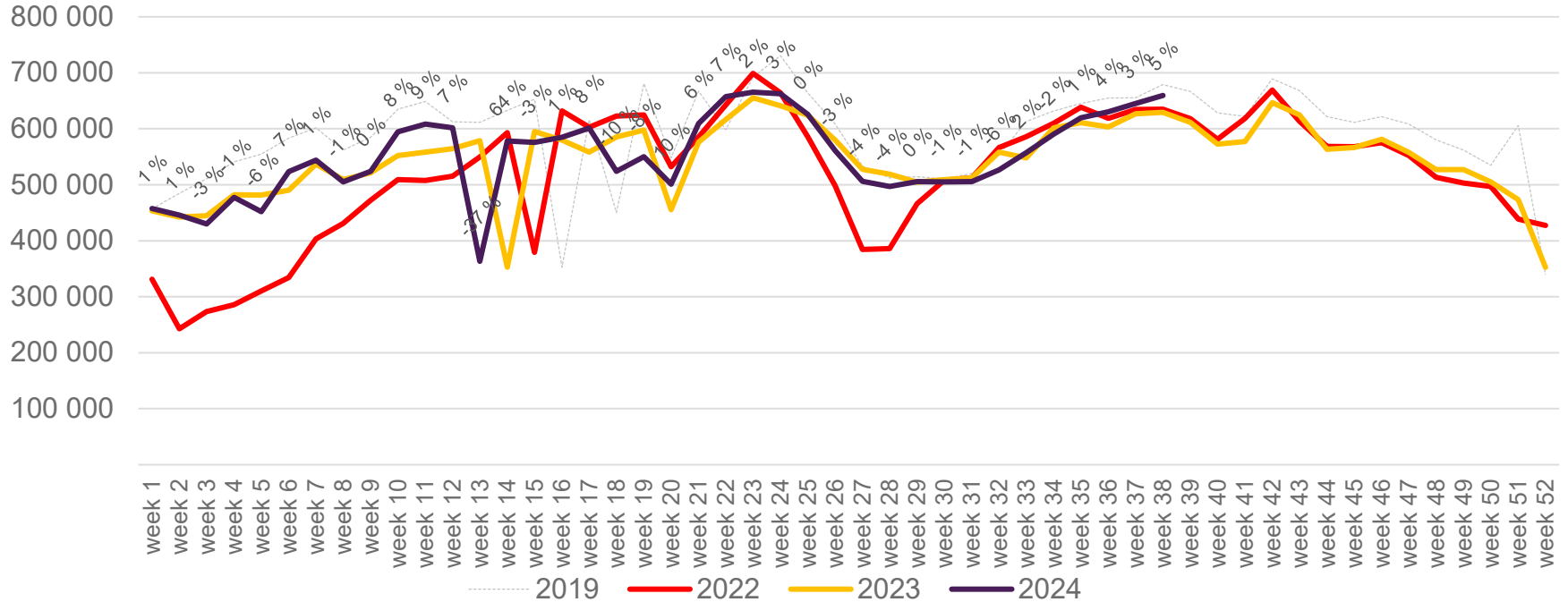
# Passengers Avinor international per week

The change is measured against the same week in 2023

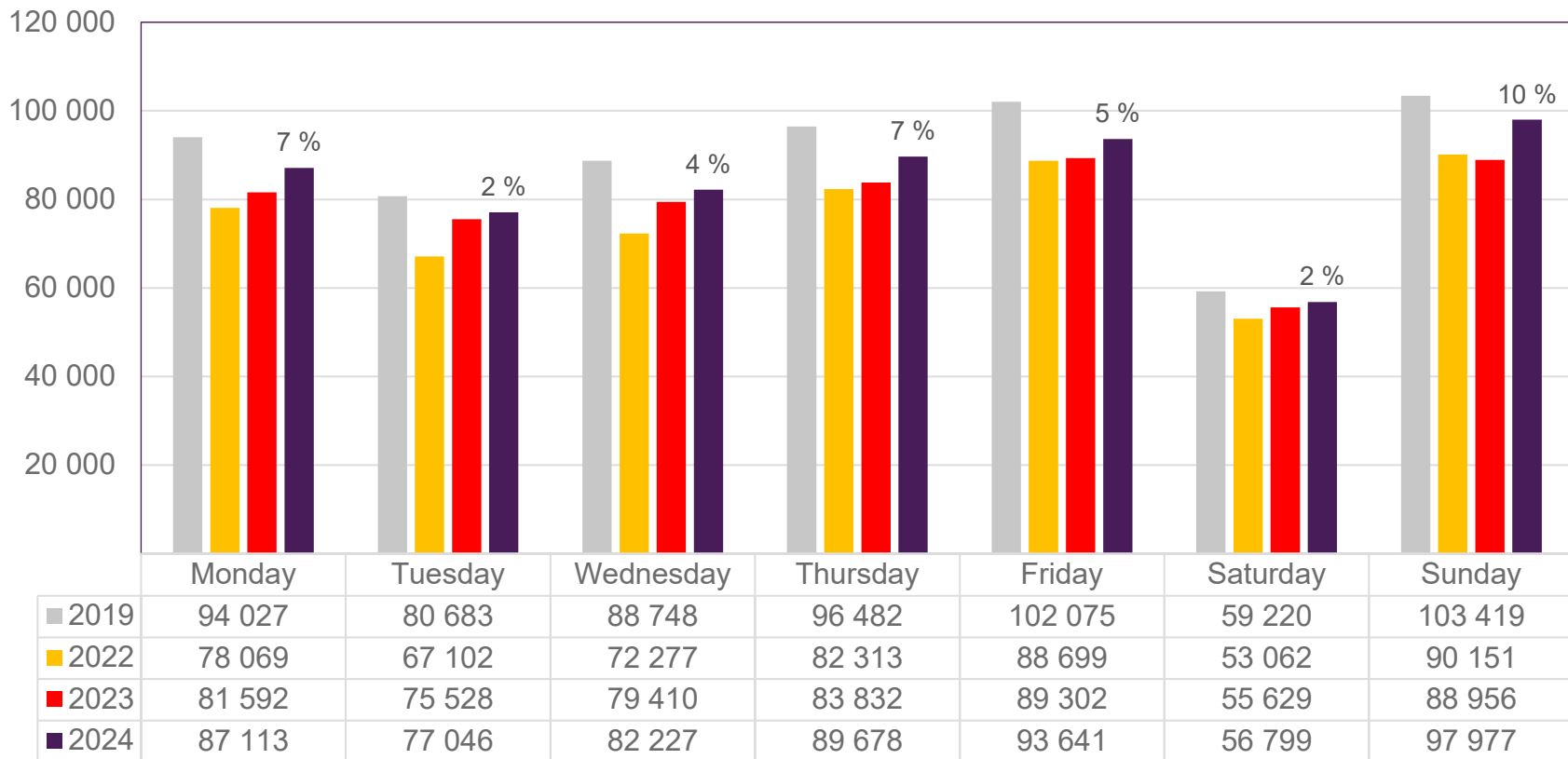


# Passengers Avinor domestic per week

The change is measured against the same week in 2023



# Passengers OSL total per day, week 38



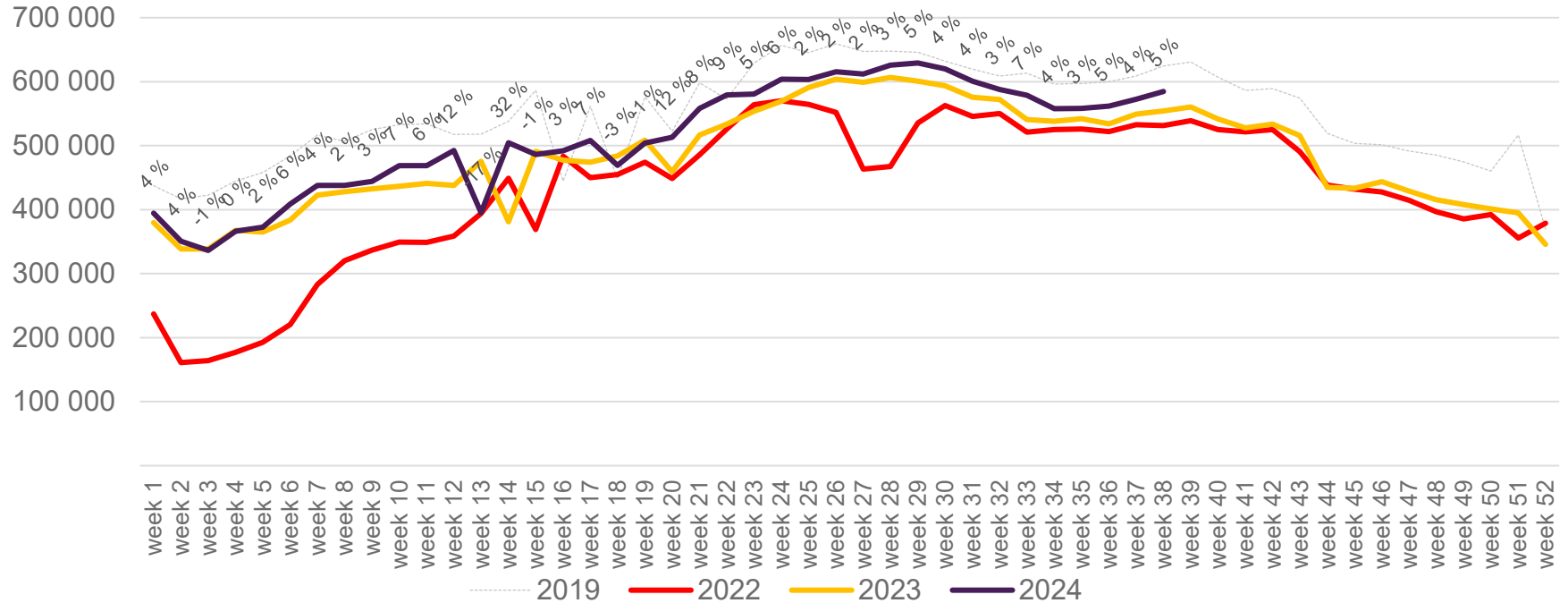
The change is measured against the same week in 2023

Source: SIA, Avinor Statistics



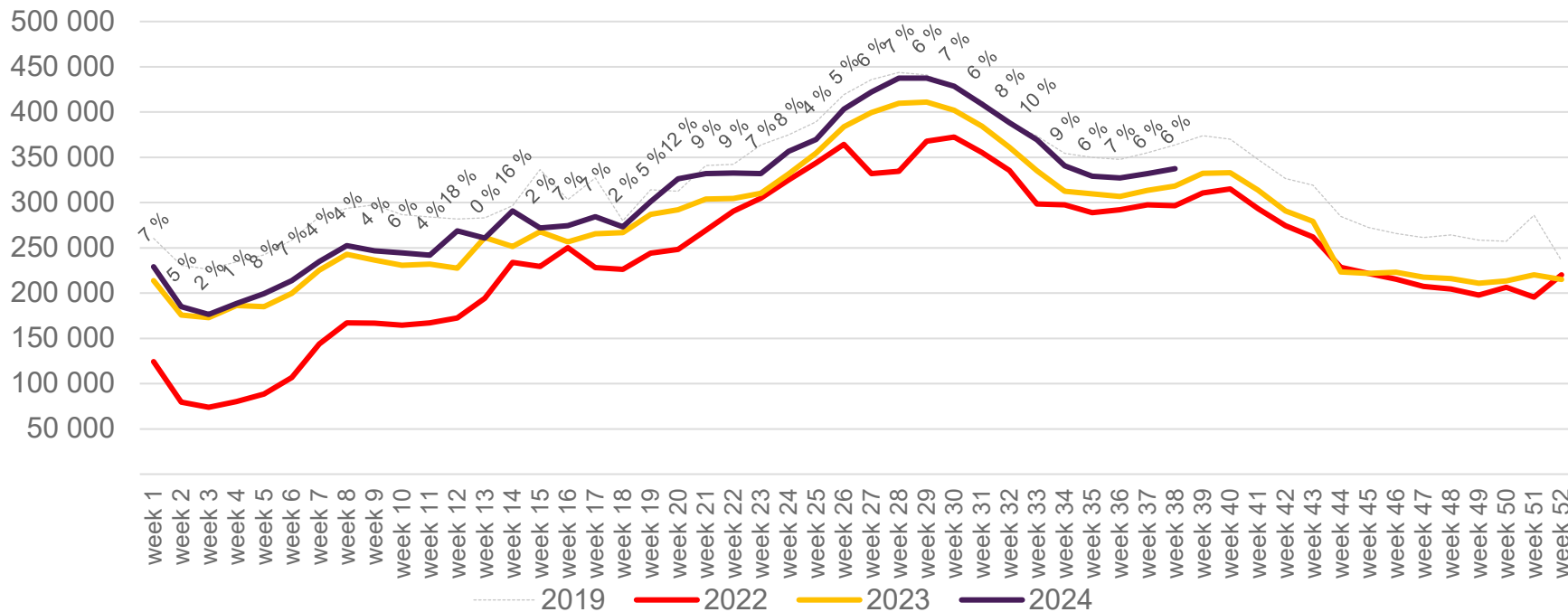
# Passengers OSL total per week

The change is measured against the same week in 2023



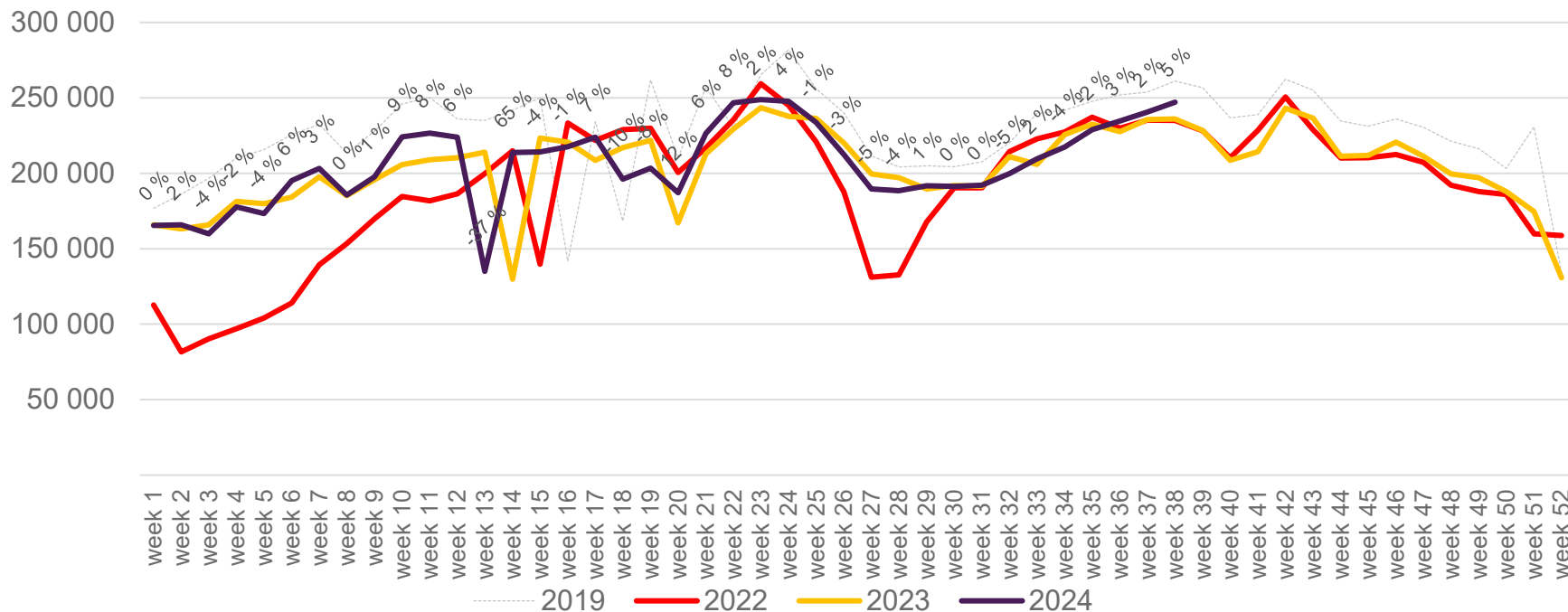
# Passengers OSL international per week

The change is measured against the same week in 2023

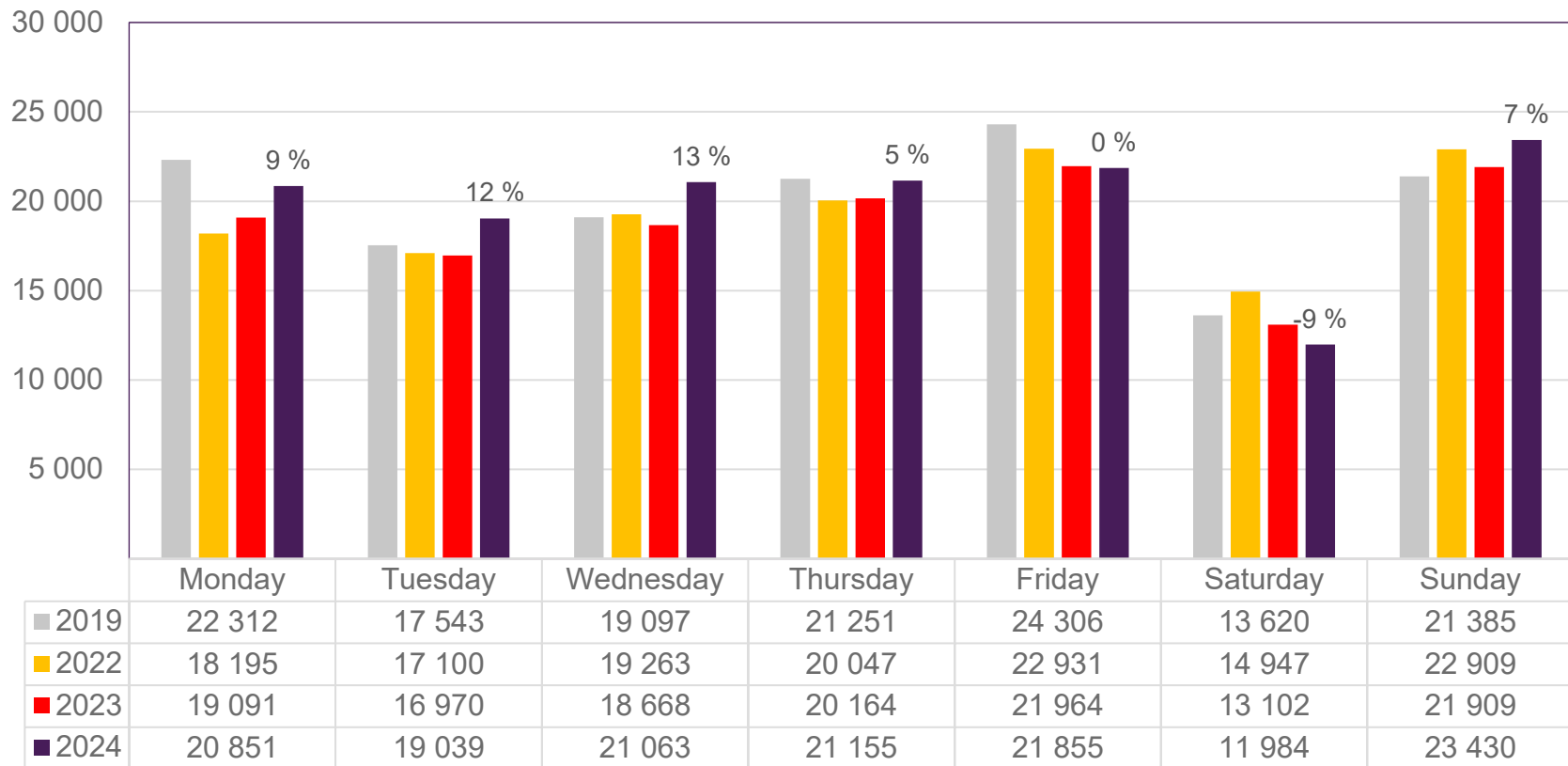


# Passengers OSL domestic per week

The change is measured against the same week in 2023



# Passengers BGO total per day, week 38

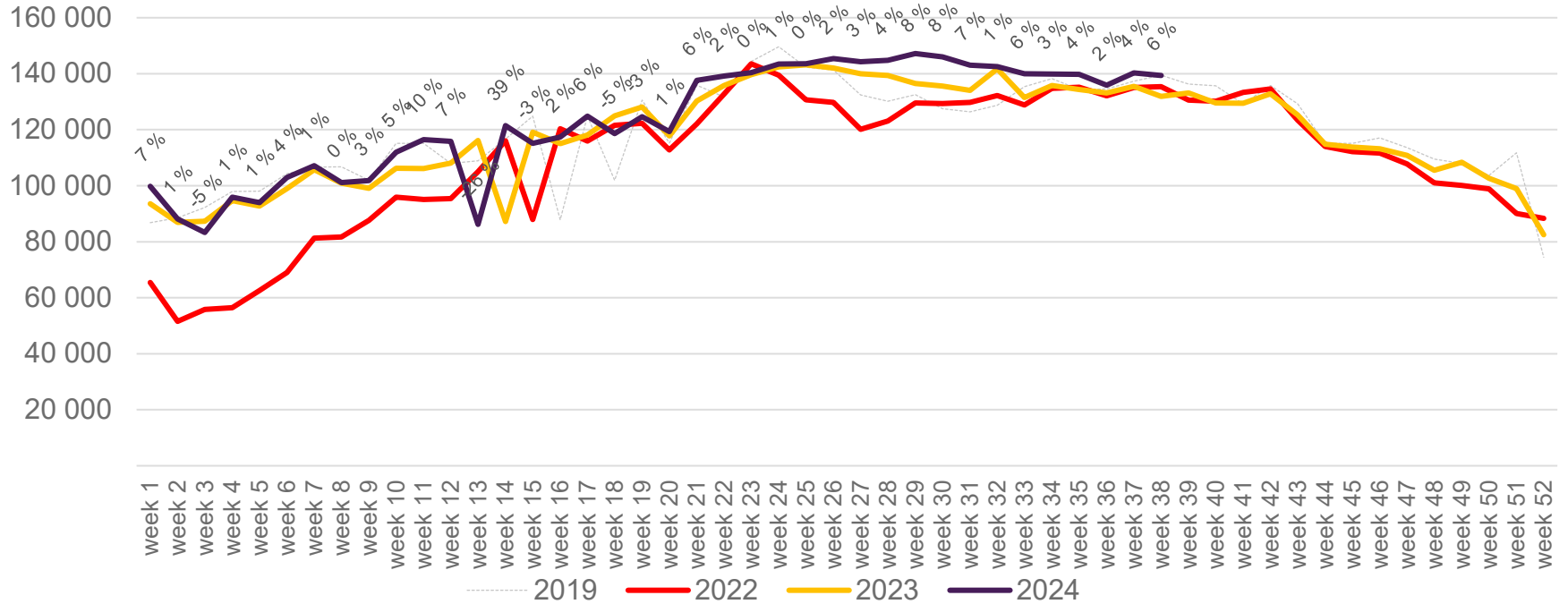


The change is measured against the same week in 2023

Source: SIA, Avinor Statistics

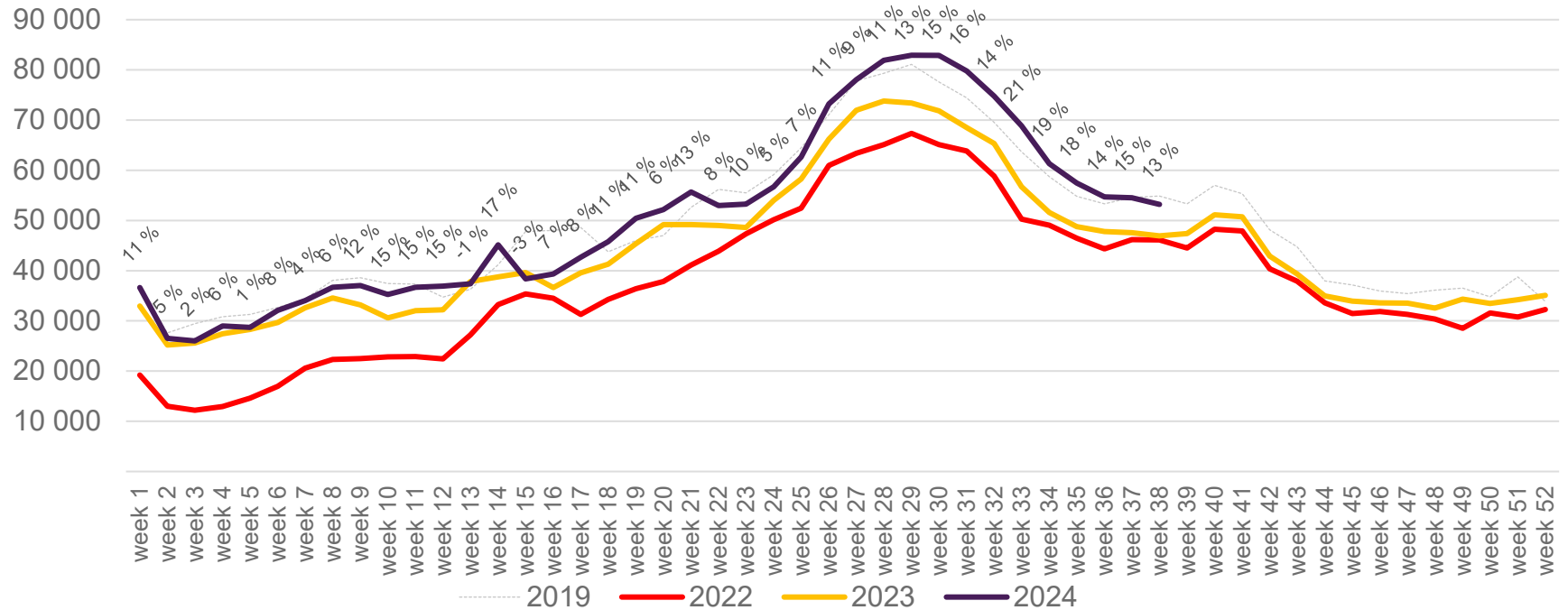
# Passengers BGO total per week

The change is measured against the same week in 2023



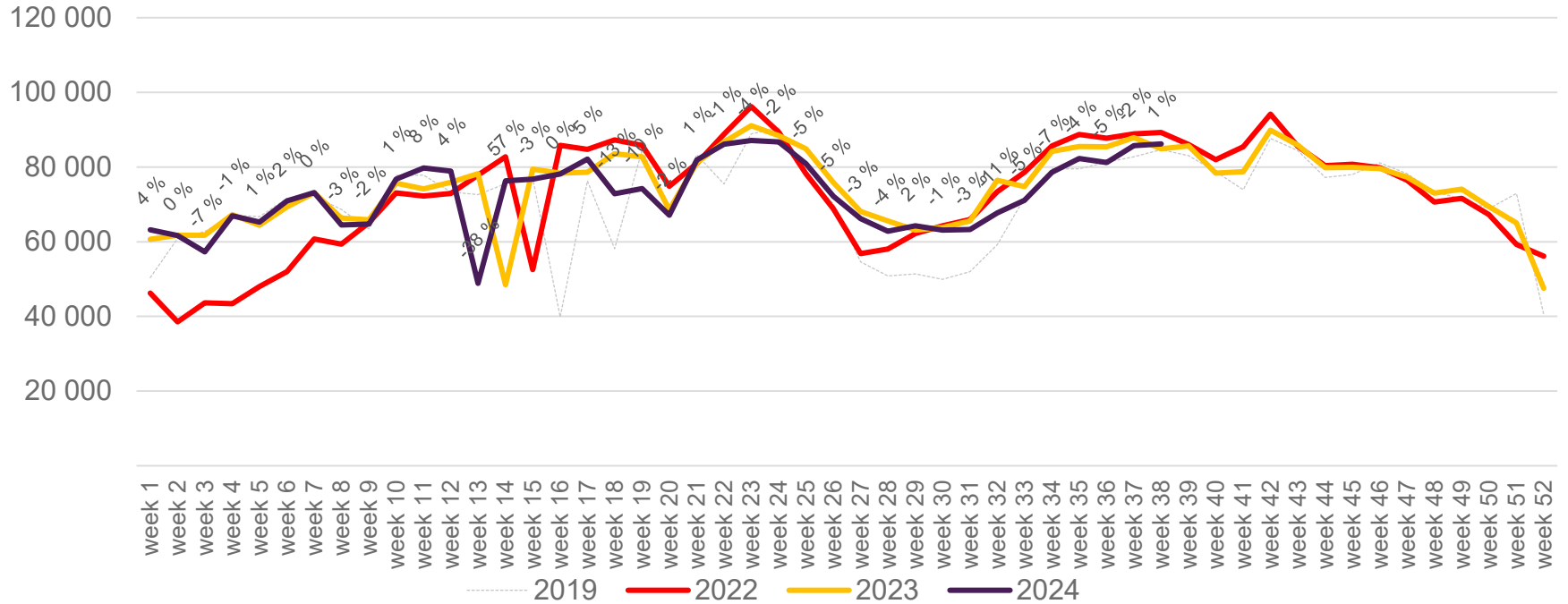
# Passengers BGO international per week

The change is measured against the same week in 2023

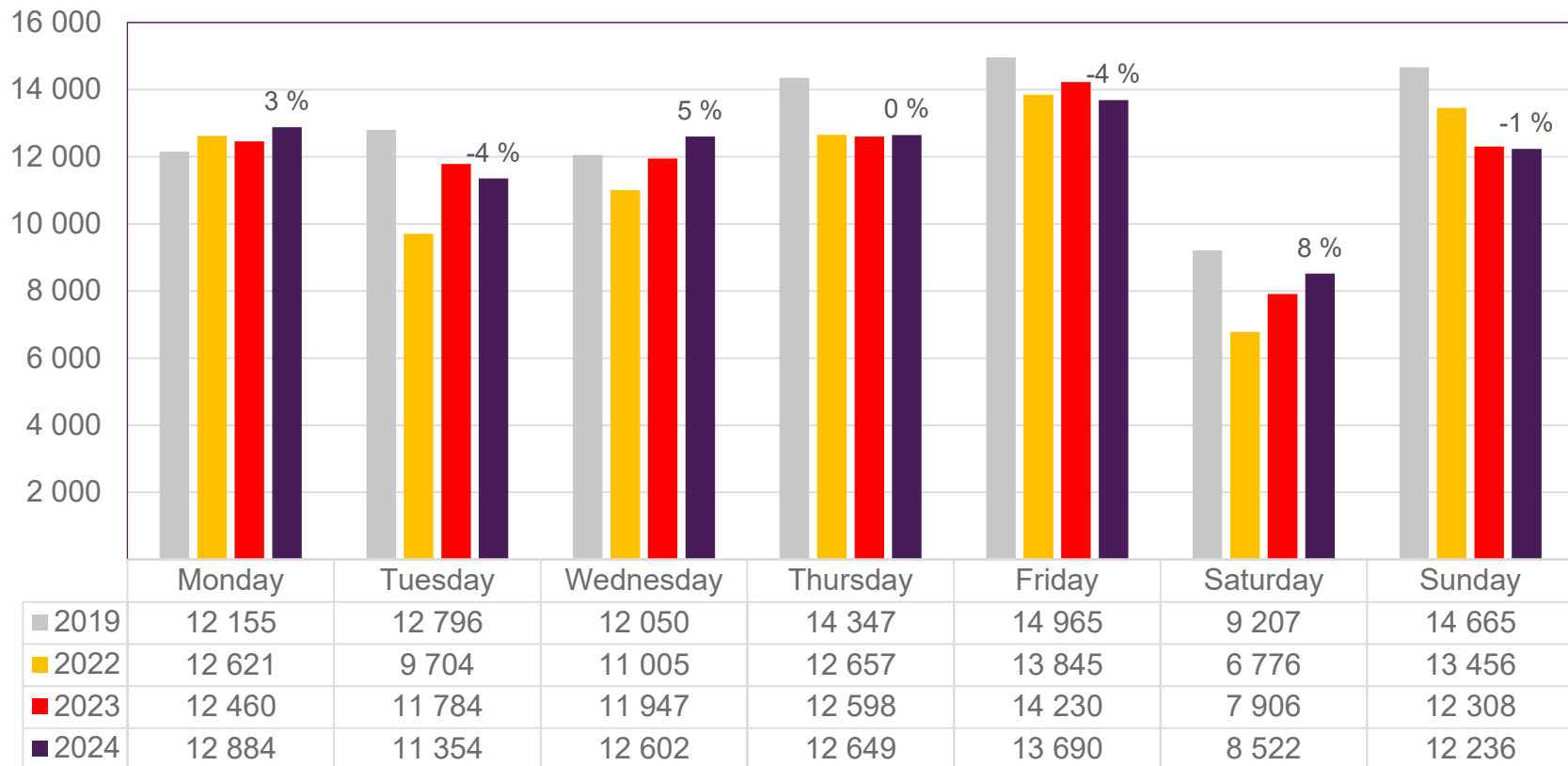


# Passengers BGO domestic per week

The change is measured against the same week in 2023



# Passengers SVG total per day, week 38



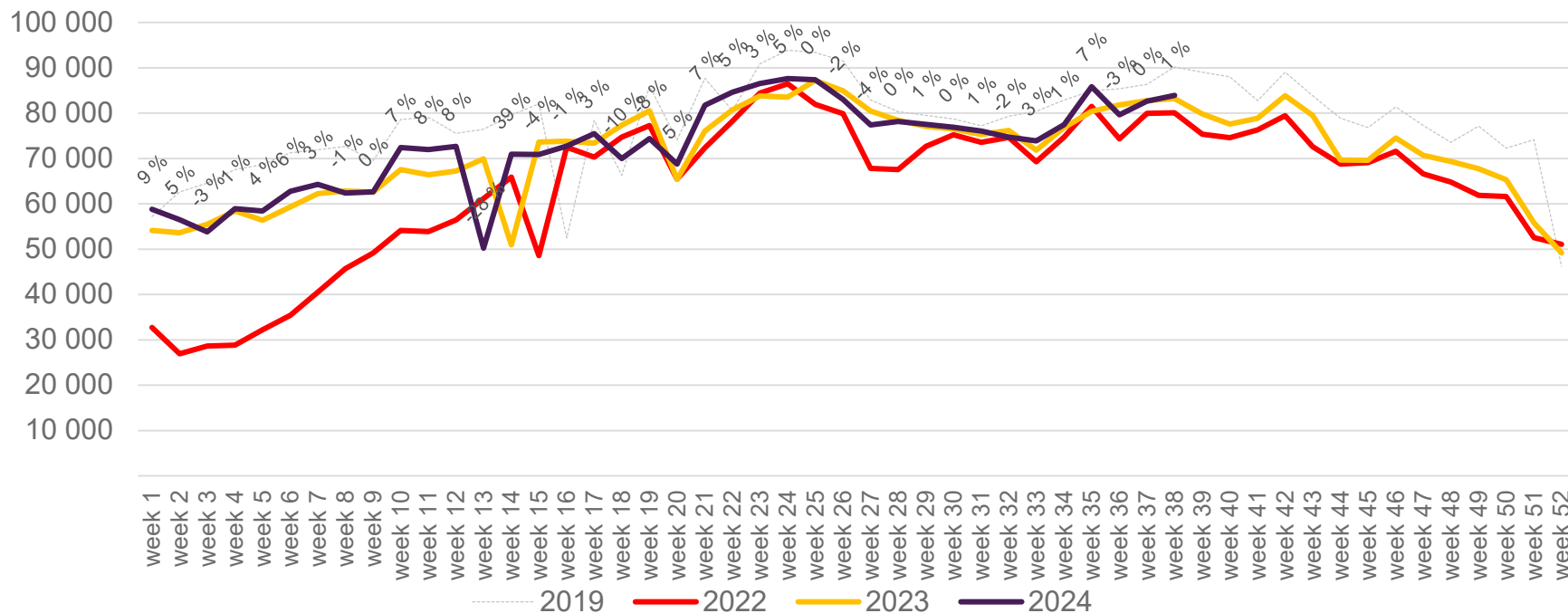
The change is measured against the same week in 2023

Source: SIA, Avinor Statistics



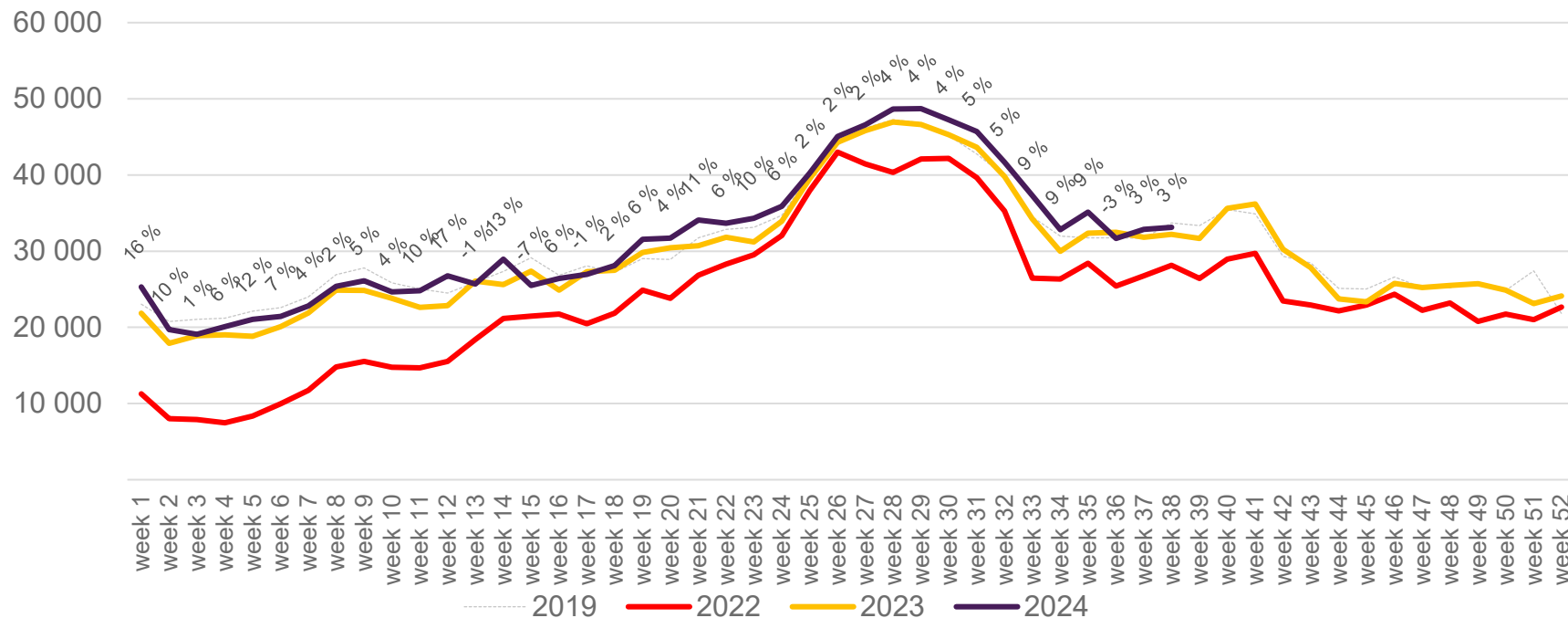
# Passengers SVG total per week

The change is measured against the same week in 2023



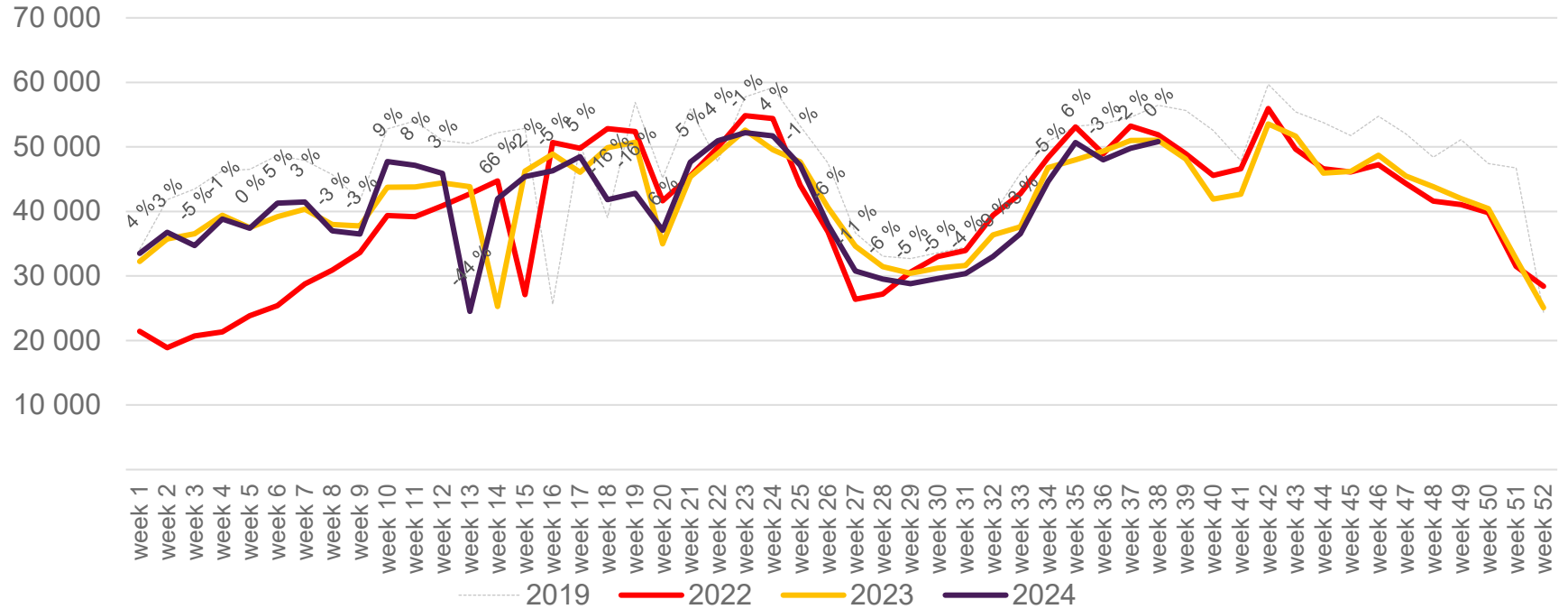
# Passengers SVG international per week

The change is measured against the same week in 2023

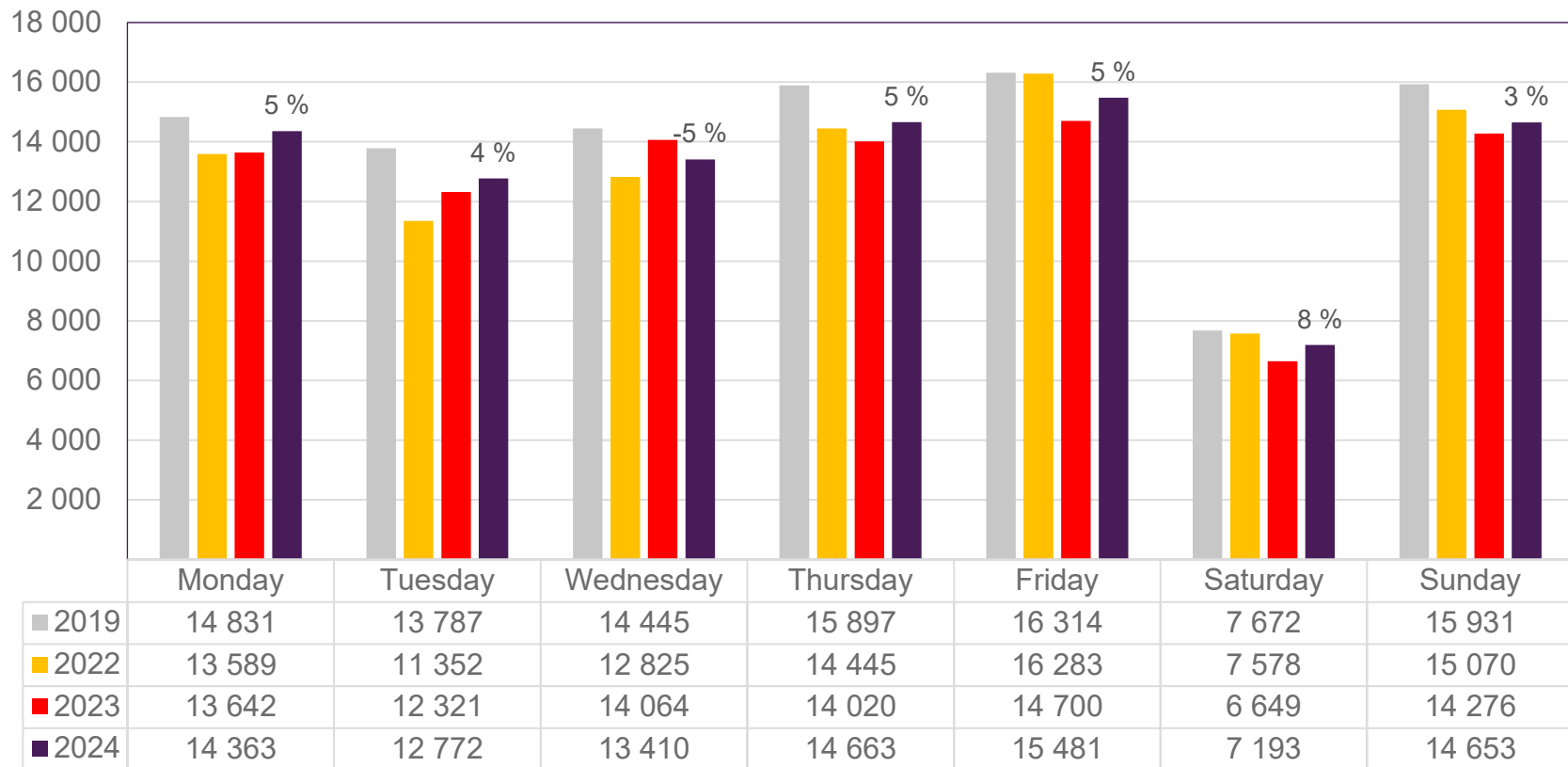


# Passengers SVG domestic per week

The change is measured against the same week in 2023



# Passengers TRD total per day, week 38

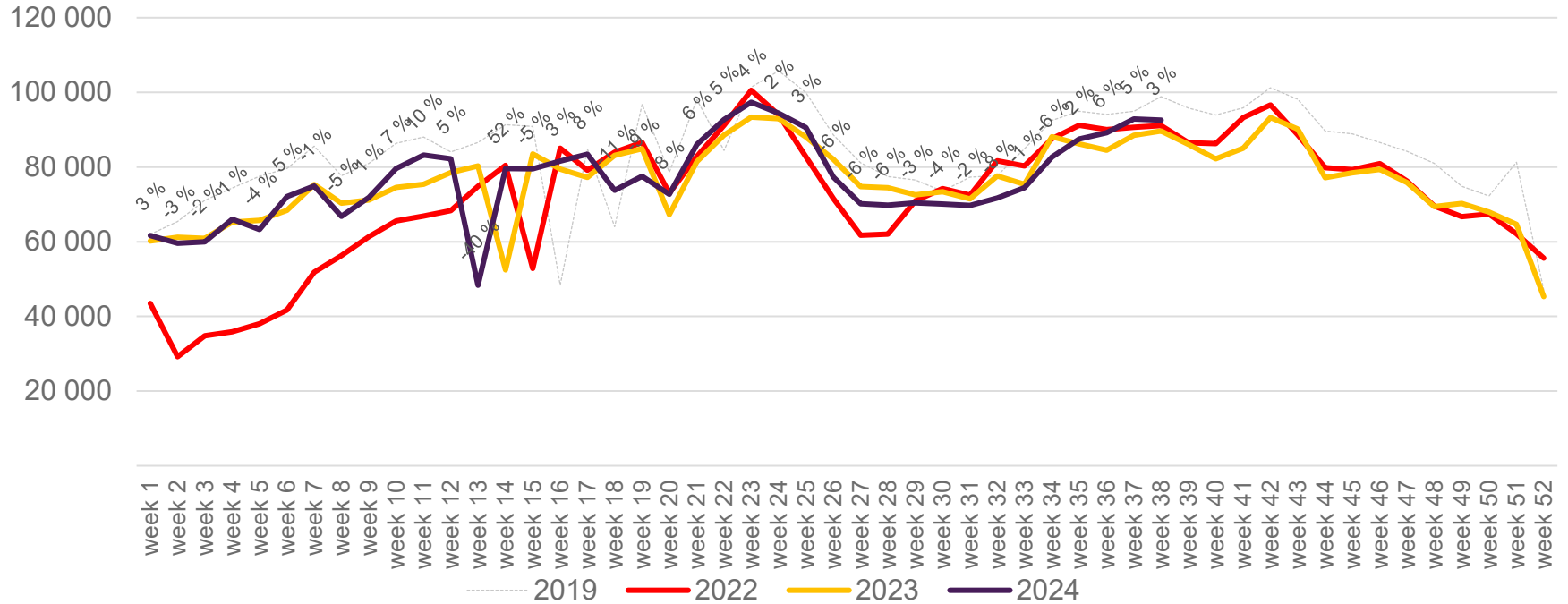


The change is measured against the same week in 2023

Source: SIA, Avinor Statistics

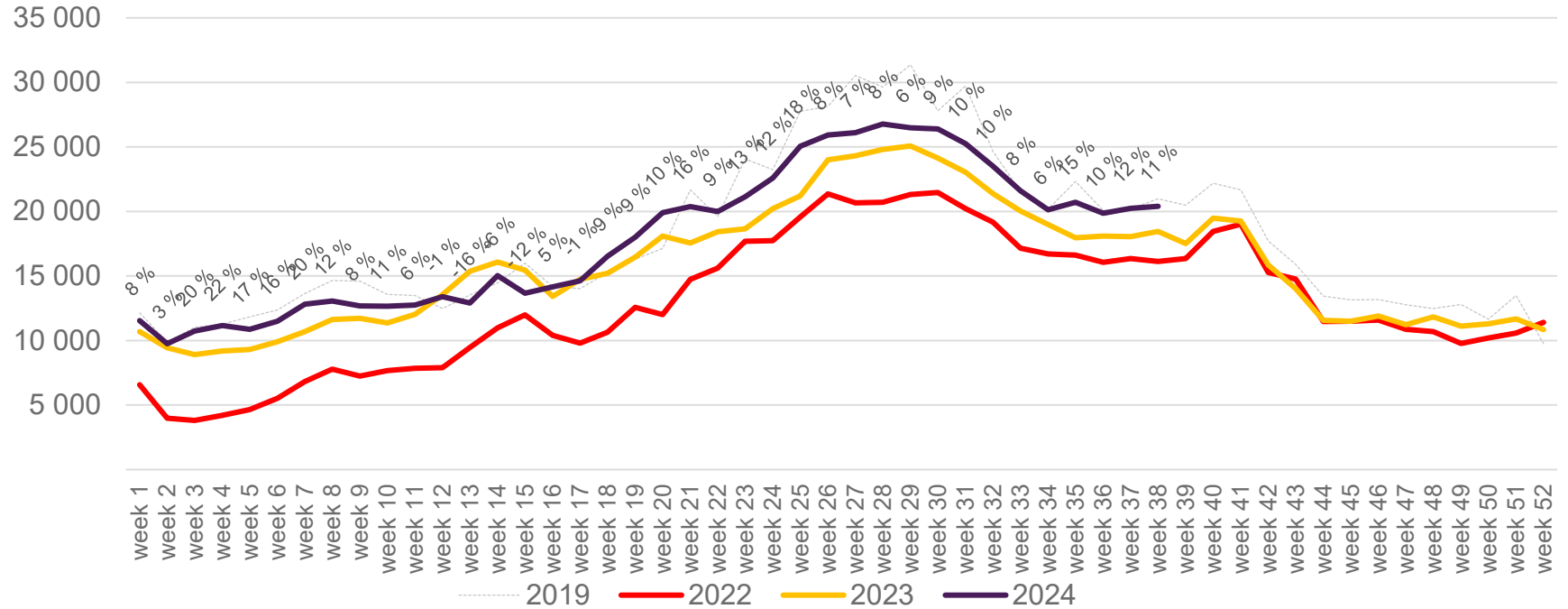
# Passengers TRD total per week

The change is measured against the same week in 2023



# Passengers TRD international per week

The change is measured against the same week in 2023



# Passengers TRD domestic per week

The change is measured against the same week in 2023

