



Passenger numbers per week

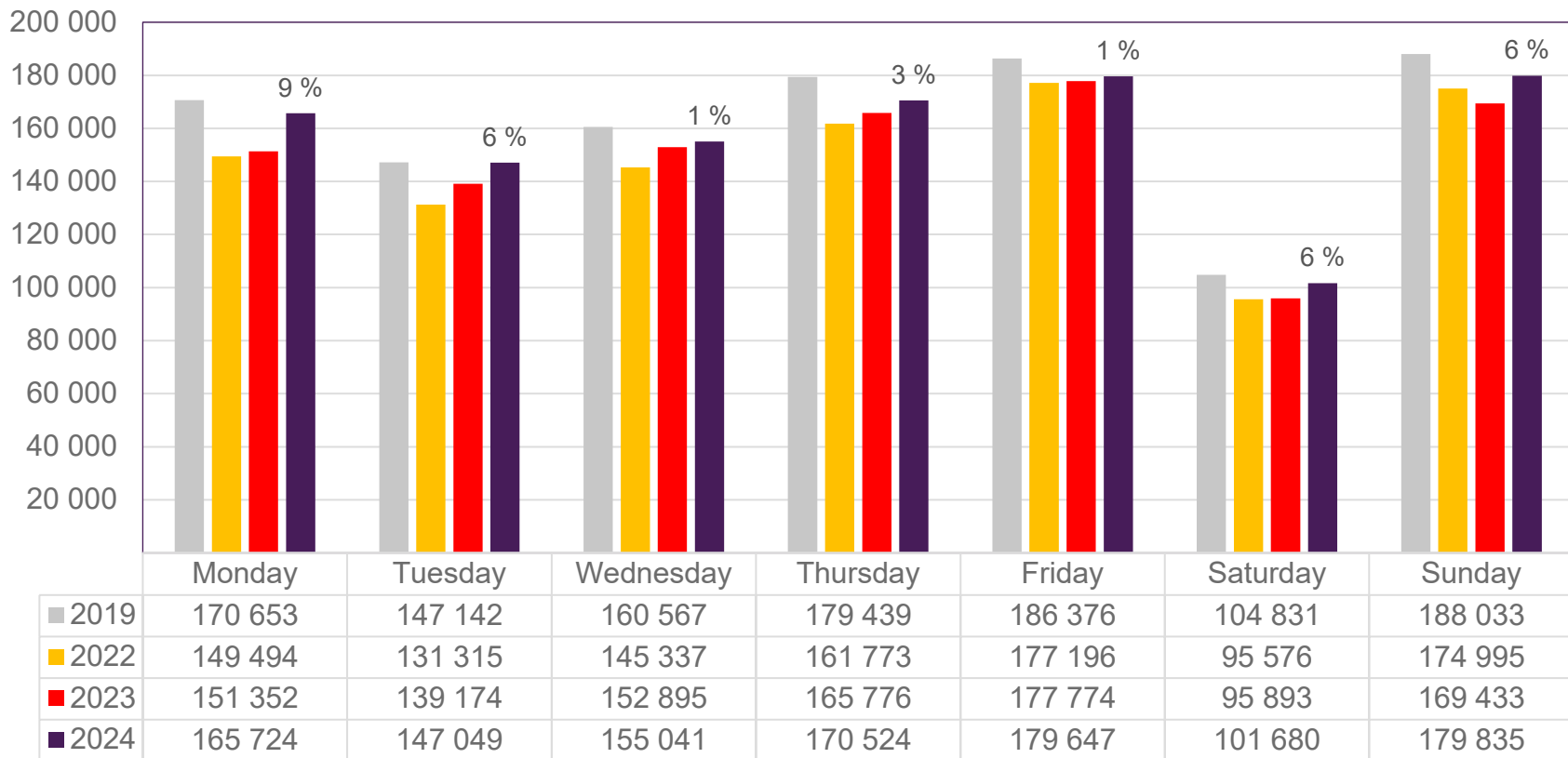
Preliminary figures

- The figures for the previous week are preliminary. It takes some time for all passenger numbers to be reported, so the figures for the previous week may be lower than the final figures.
- The figures are taken from SIA, Avinor's traffic database.

Top 10 airports, total week 37

Airport	2019	2022	2023	2024	2024 vs. 2023	
					Change	Change %
Oslo/Gardermoen	608 976	532 638	549 164	572 072	22 908	4 %
Bergen/Flesland	137 354	135 043	135 509	140 147	4 638	3 %
Trondheim/Værnes	94 942	90 643	88 504	92 680	4 176	5 %
Stavanger/Sola	86 316	79 969	82 788	82 497	-291	0 %
Tromsø/Langnes	42 350	42 108	41 152	45 370	4 218	10 %
Bodø	36 798	35 928	35 624	40 820	5 196	15 %
Ålesund/Vigra	24 612	22 211	22 485	21 909	-576	-3 %
Kristiansand/Kjevik	24 242	18 732	17 971	17 722	-249	-1 %
Harstad/Narvik/Evenes	14 650	16 316	16 888	17 689	801	5 %
Bardufoss	4 833	3 514	4 283	3 734	-549	-13 %

Passengers Avinor total per day, week 37

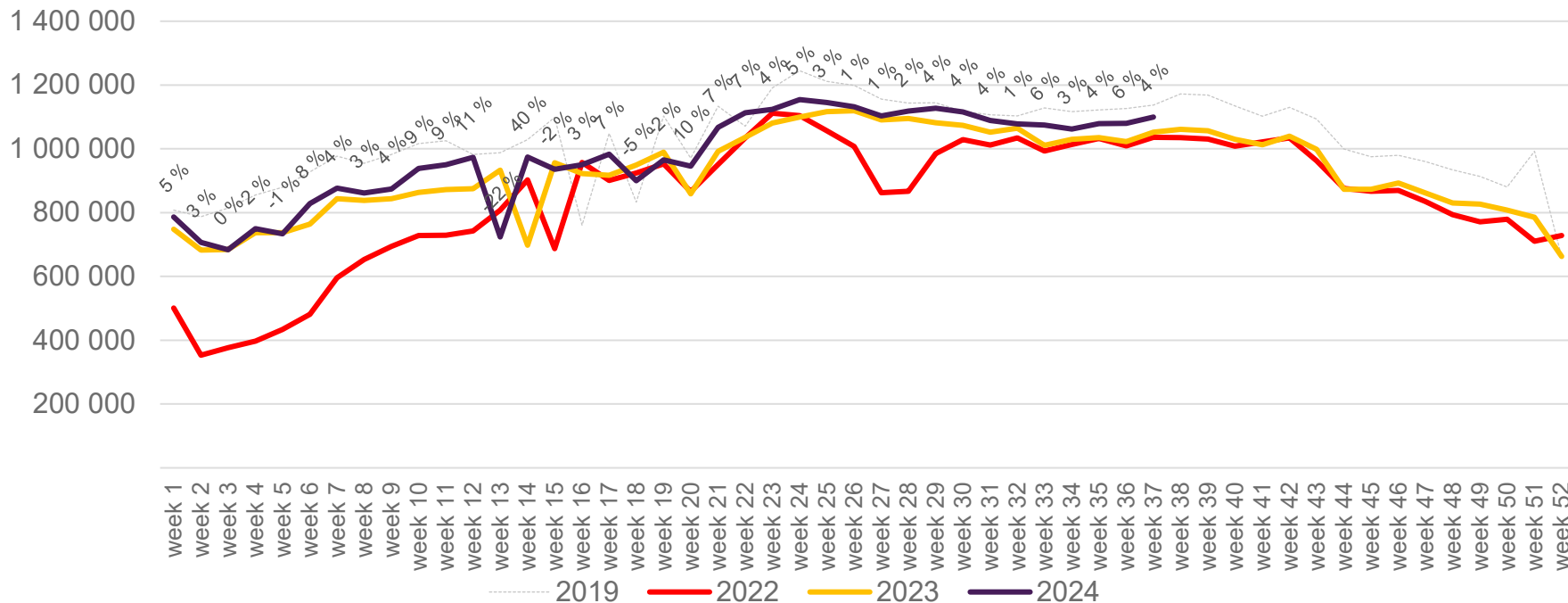


The change is measured against the same week in 2023

Source: SIA, Avinor Statistics

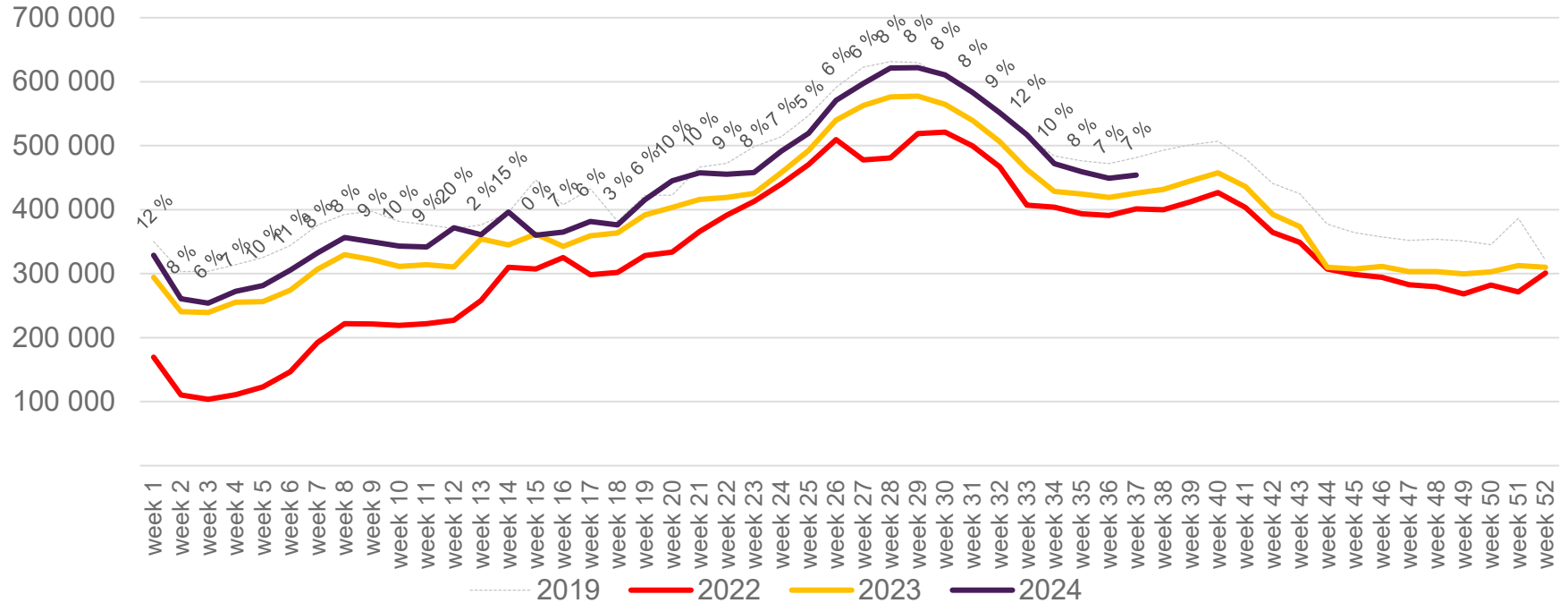
Passengers Avinor total per week

The change is measured against the same week in 2023



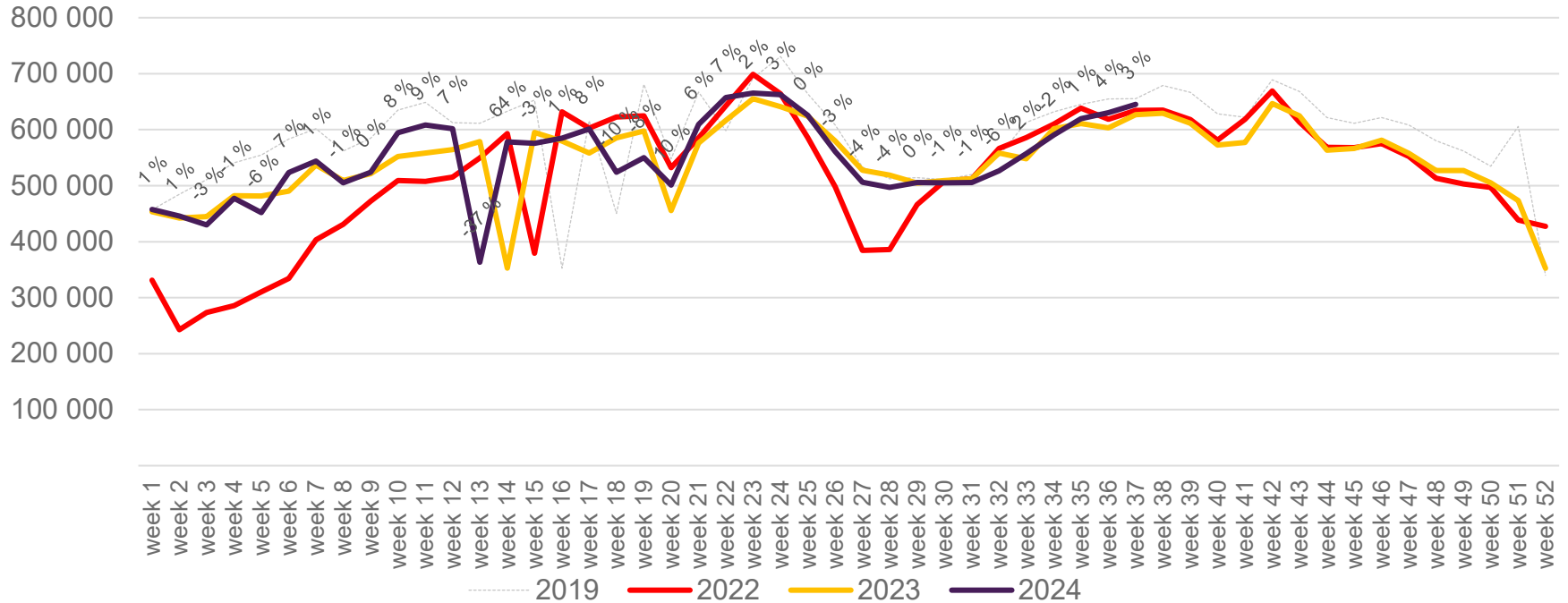
Passengers Avinor international per week

The change is measured against the same week in 2023

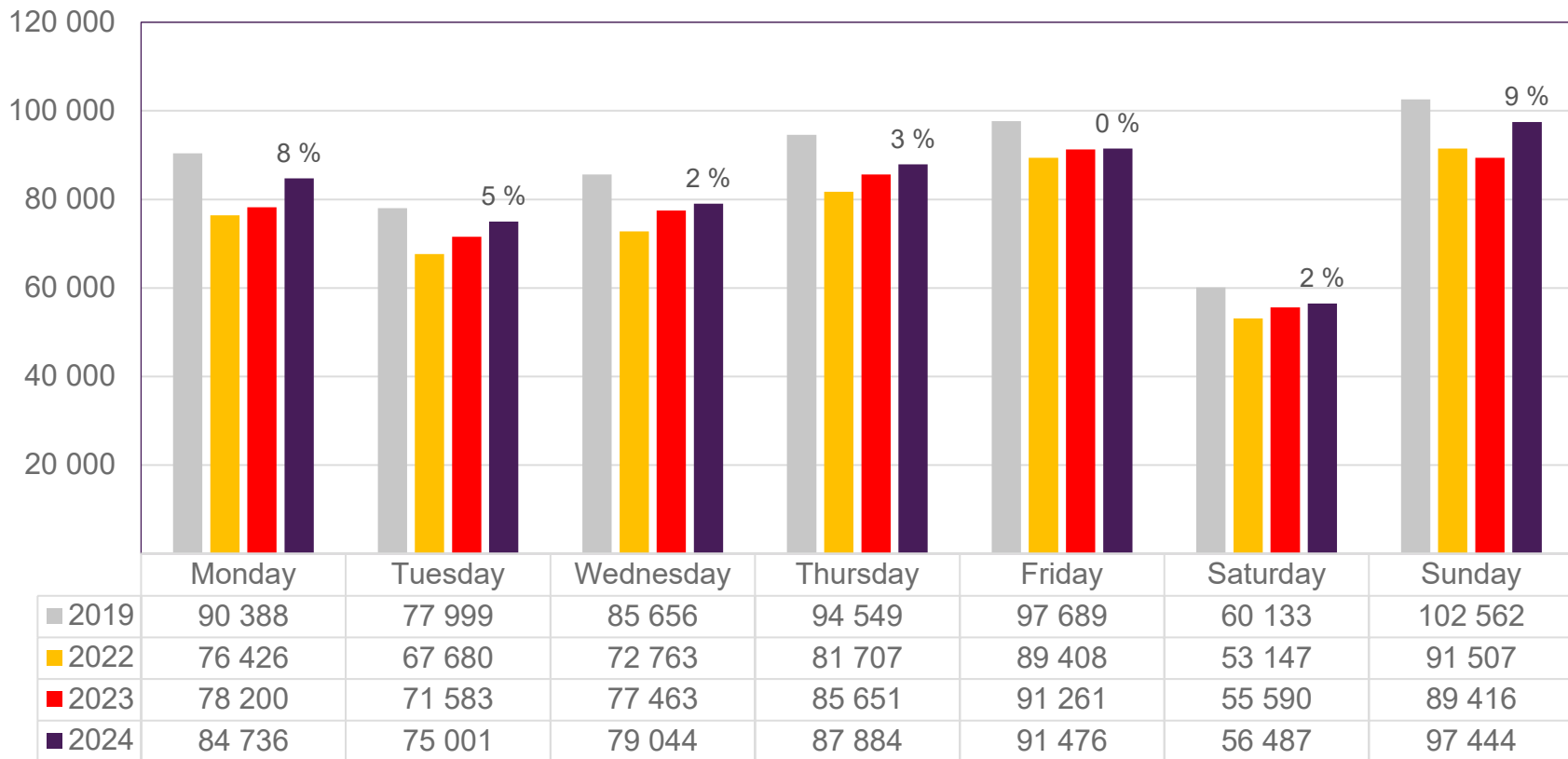


Passengers Avinor domestic per week

The change is measured against the same week in 2023



Passengers OSL total per day, week 37

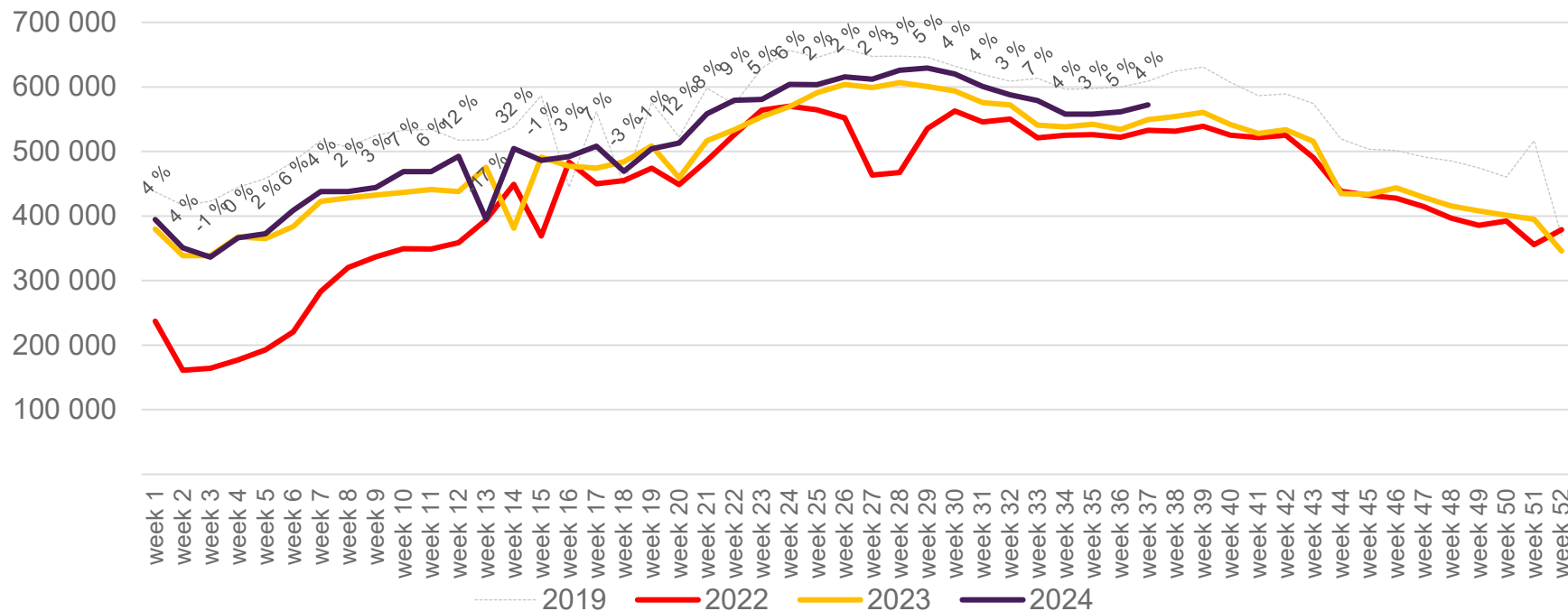


The change is measured against the same week in 2023

Source: SIA, Avinor Statistics

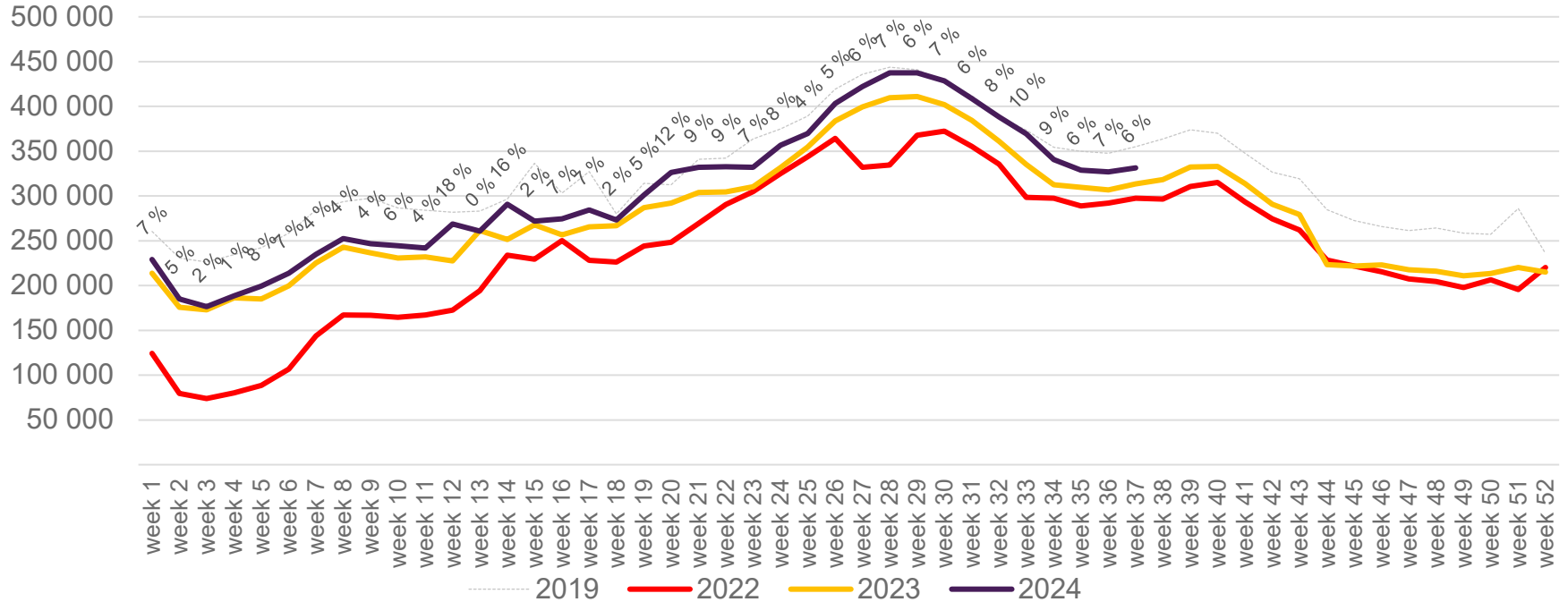
Passengers OSL total per week

The change is measured against the same week in 2023



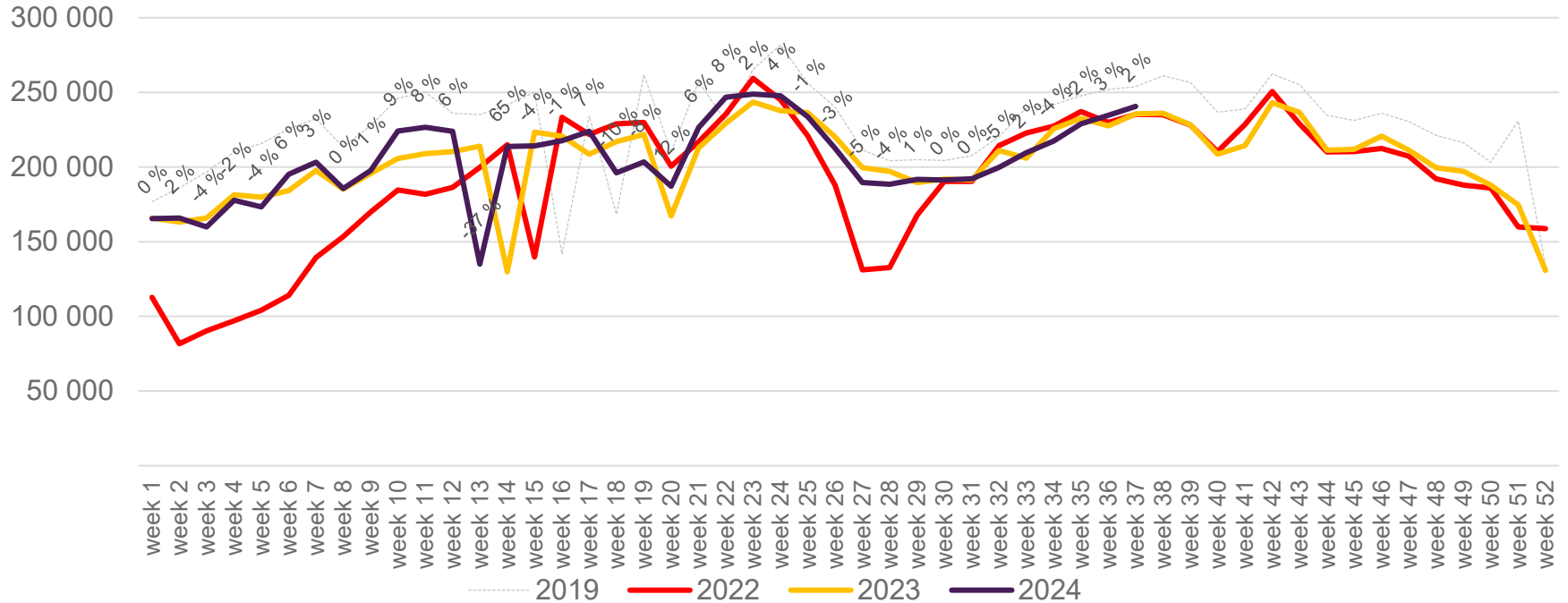
Passengers OSL international per week

The change is measured against the same week in 2023

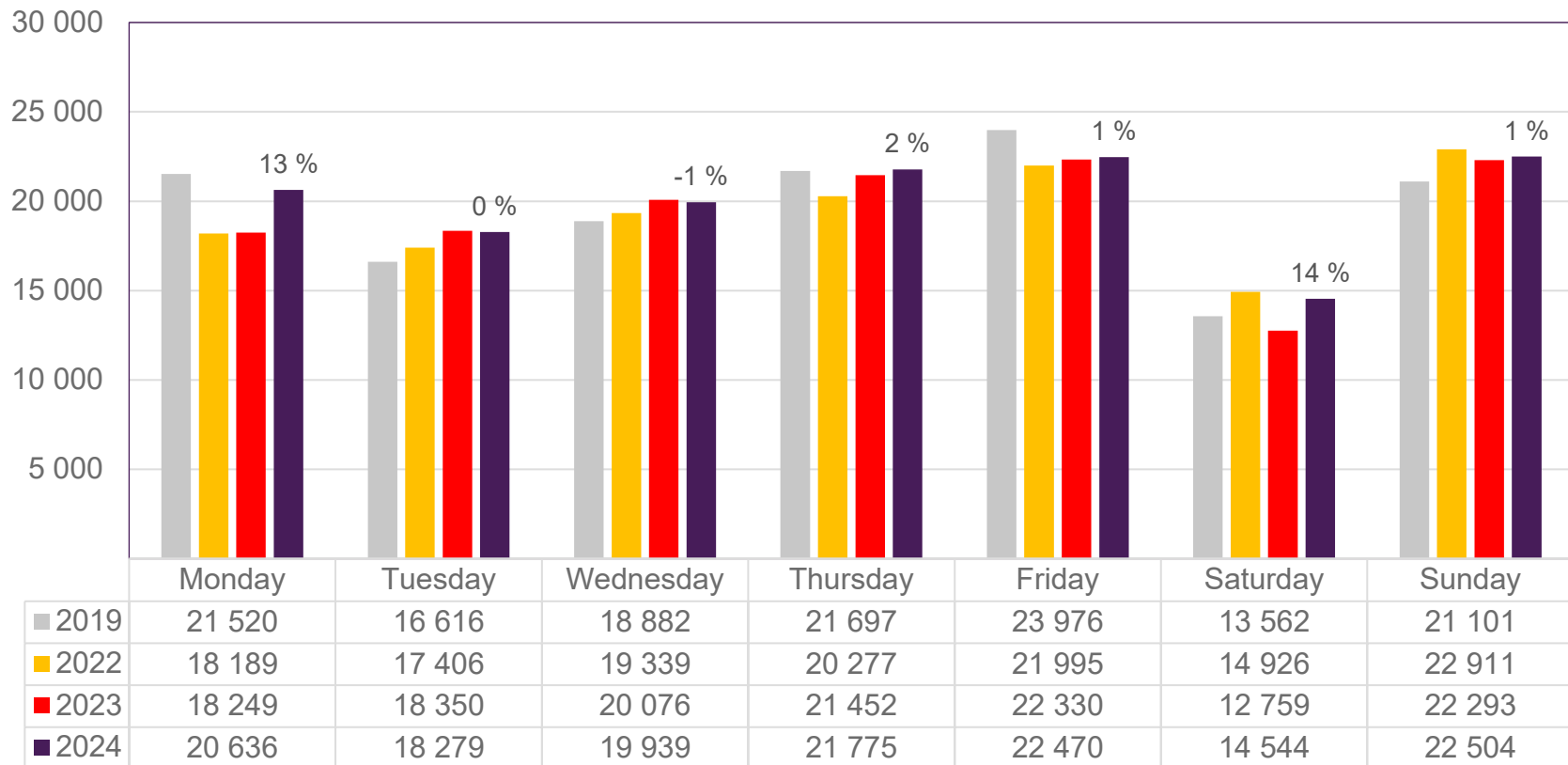


Passengers OSL domestic per week

The change is measured against the same week in 2023



Passengers BGO total per day, week 37

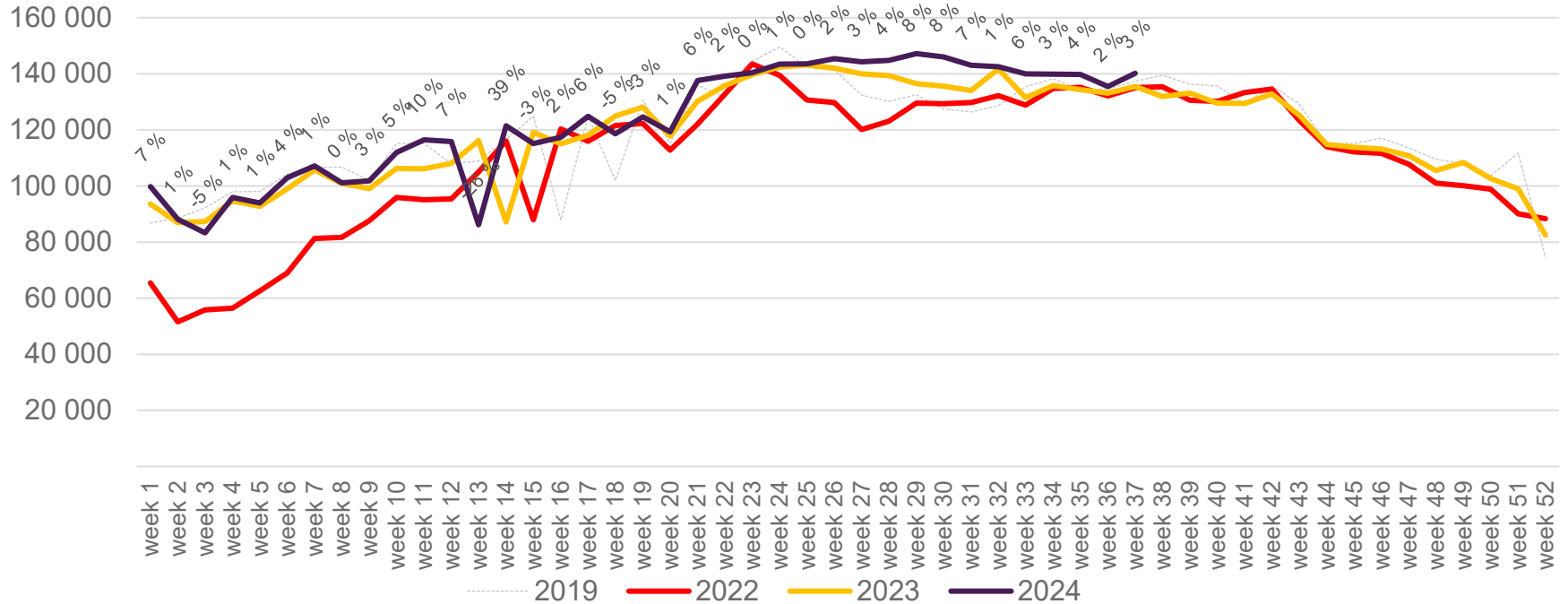


The change is measured against the same week in 2023

Source: SIA, Avinor Statistics

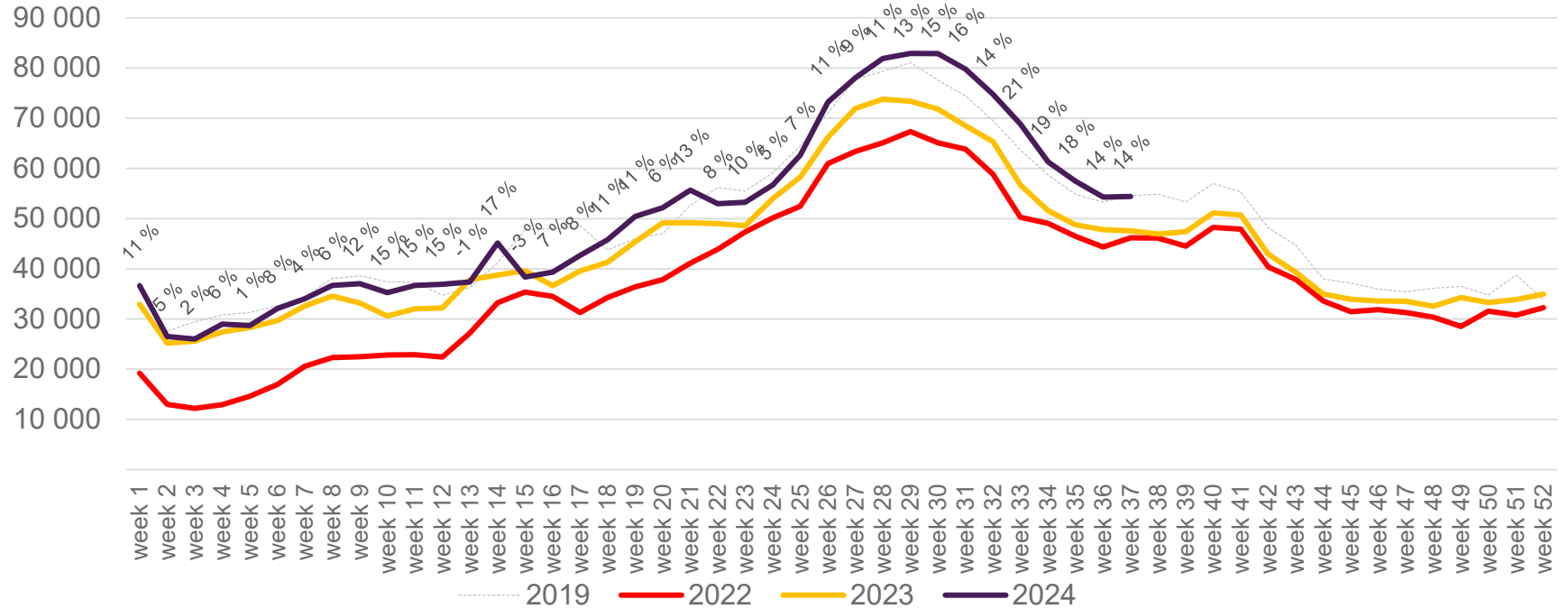
Passengers BGO total per week

The change is measured against the same week in 2023



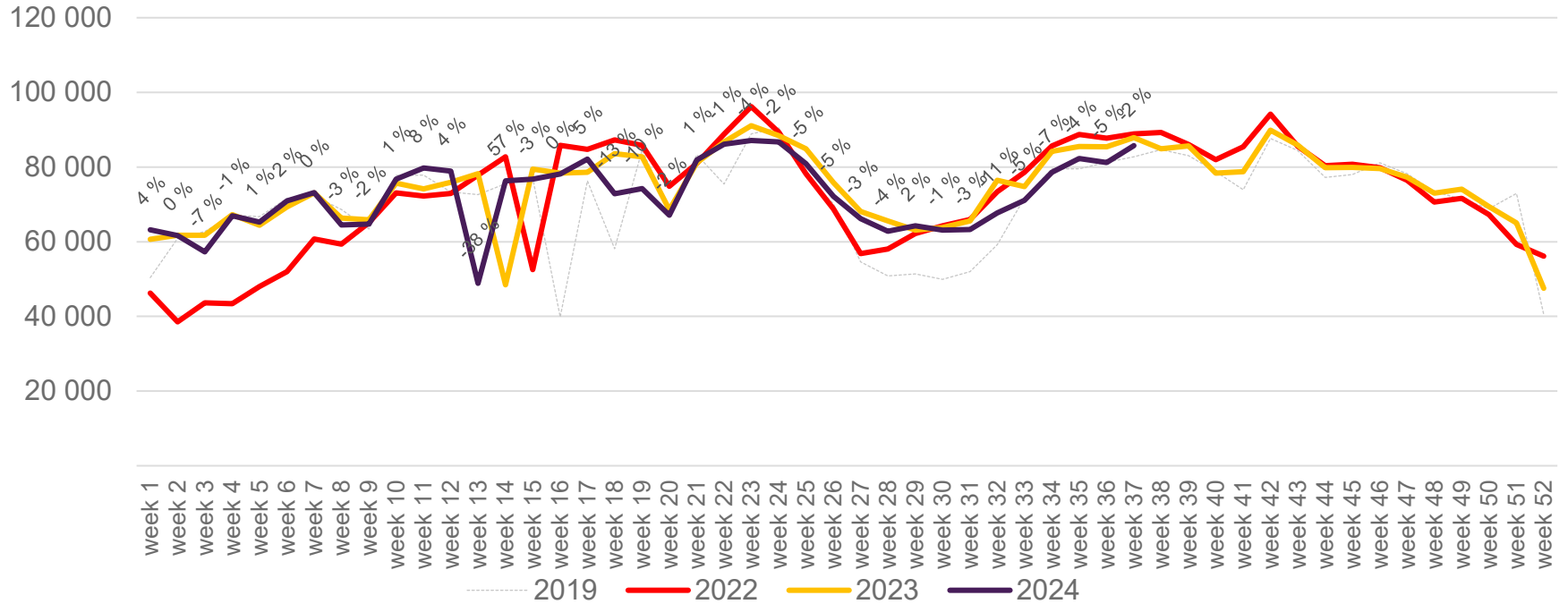
Passengers BGO international per week

The change is measured against the same week in 2023

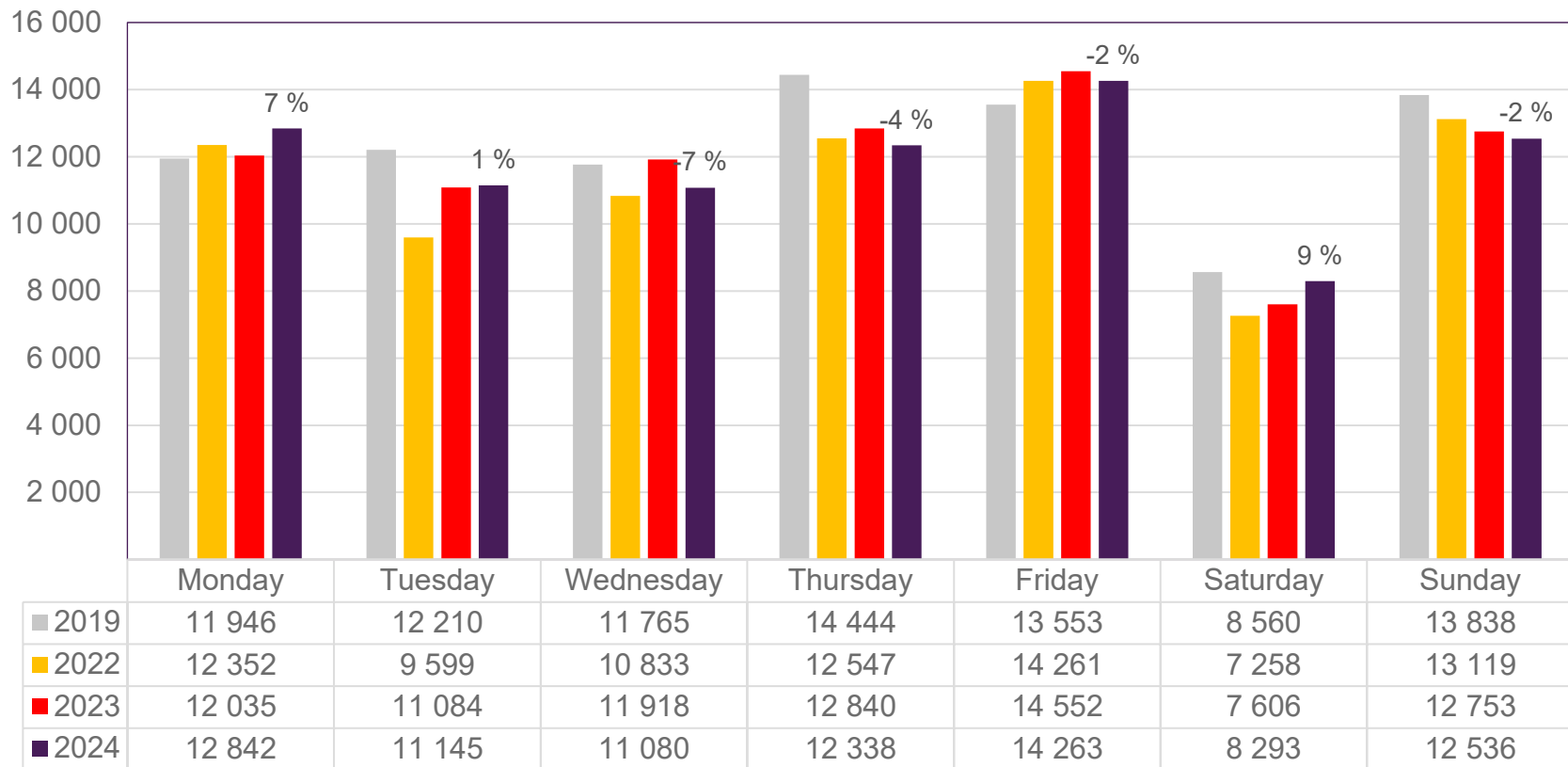


Passengers BGO domestic per week

The change is measured against the same week in 2023



Passengers SVG total per day, week 37

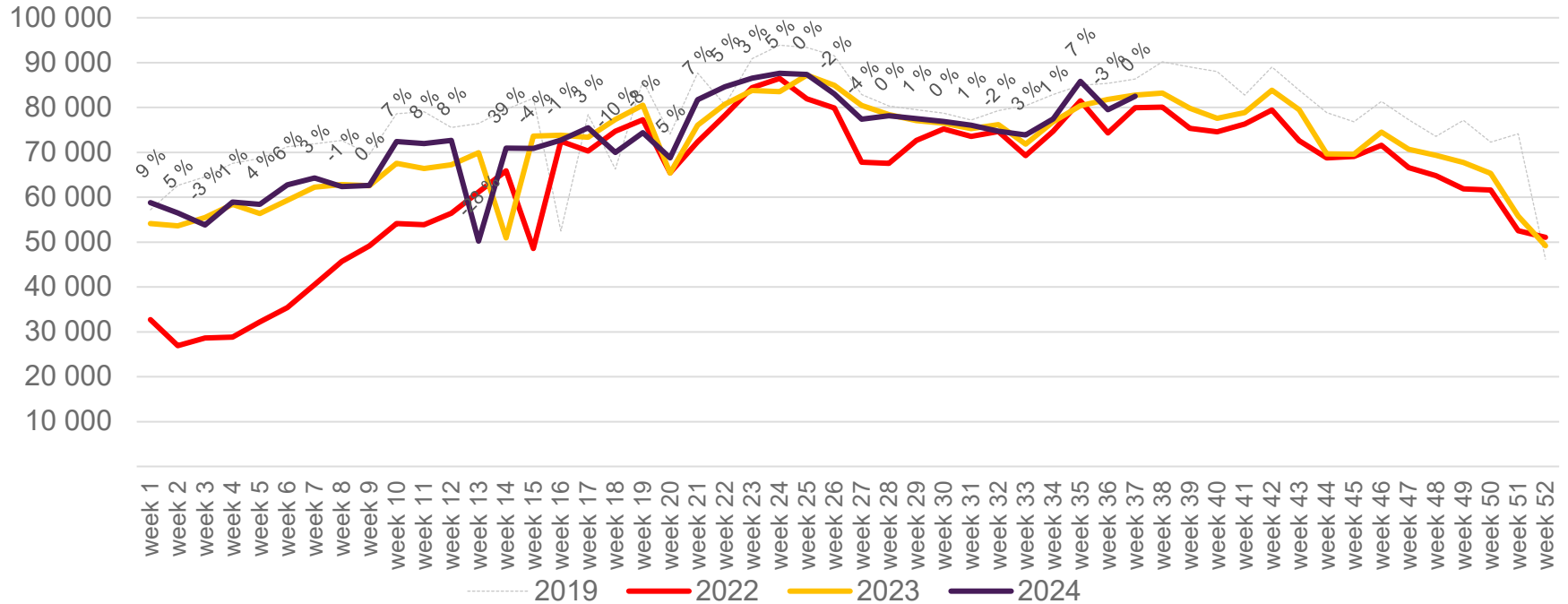


The change is measured against the same week in 2023

Source: SIA, Avinor Statistics

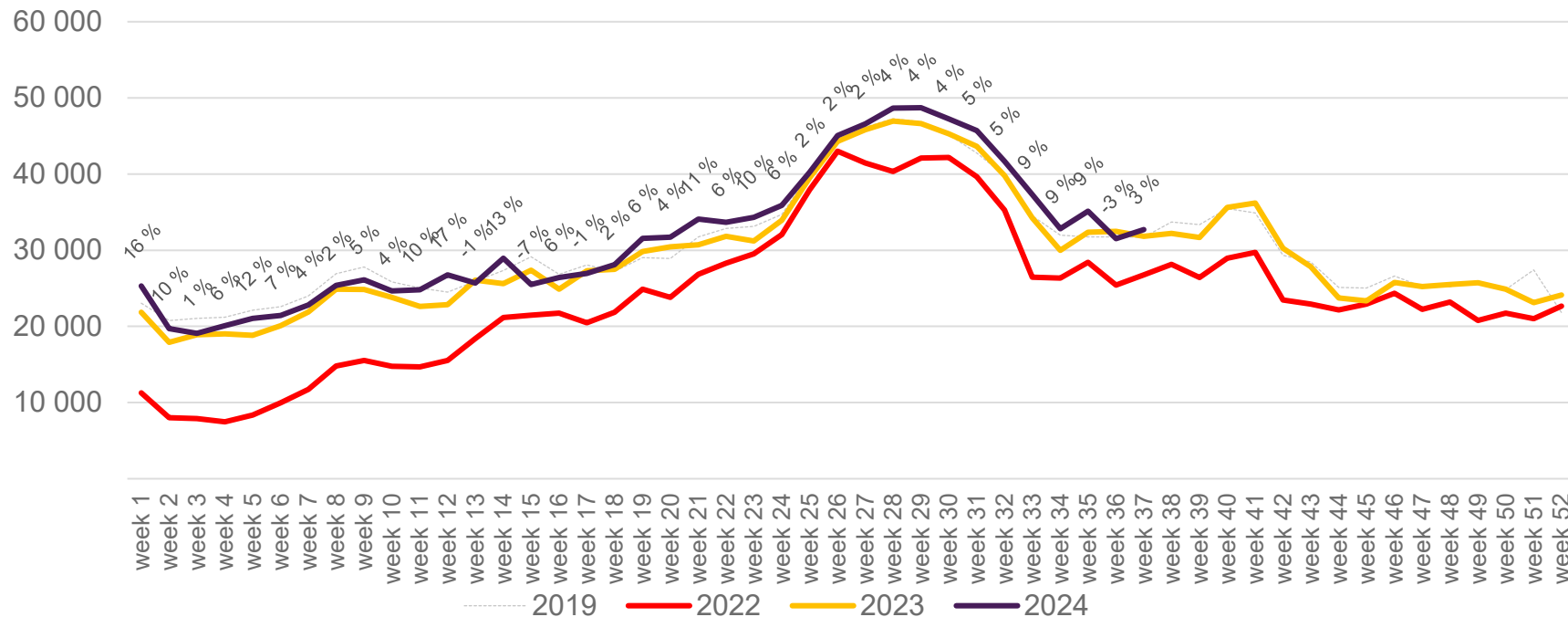
Passengers SVG total per week

The change is measured against the same week in 2023



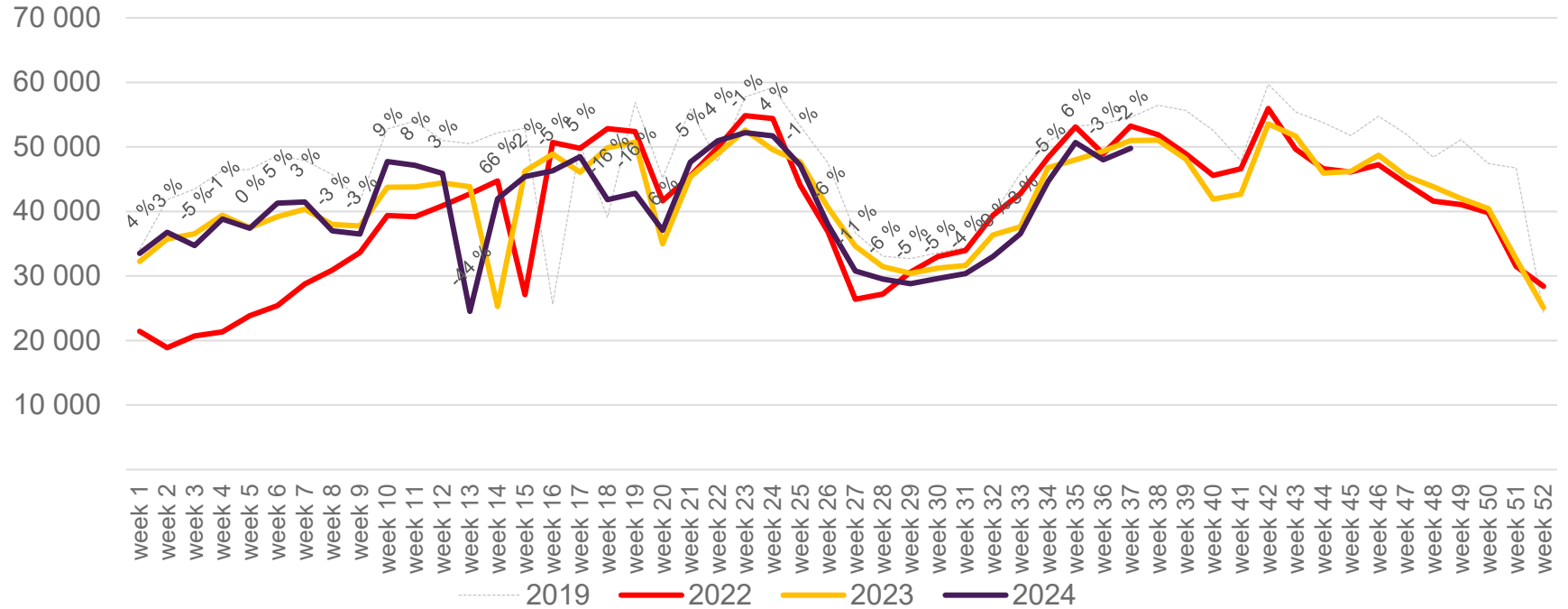
Passengers SVG international per week

The change is measured against the same week in 2023

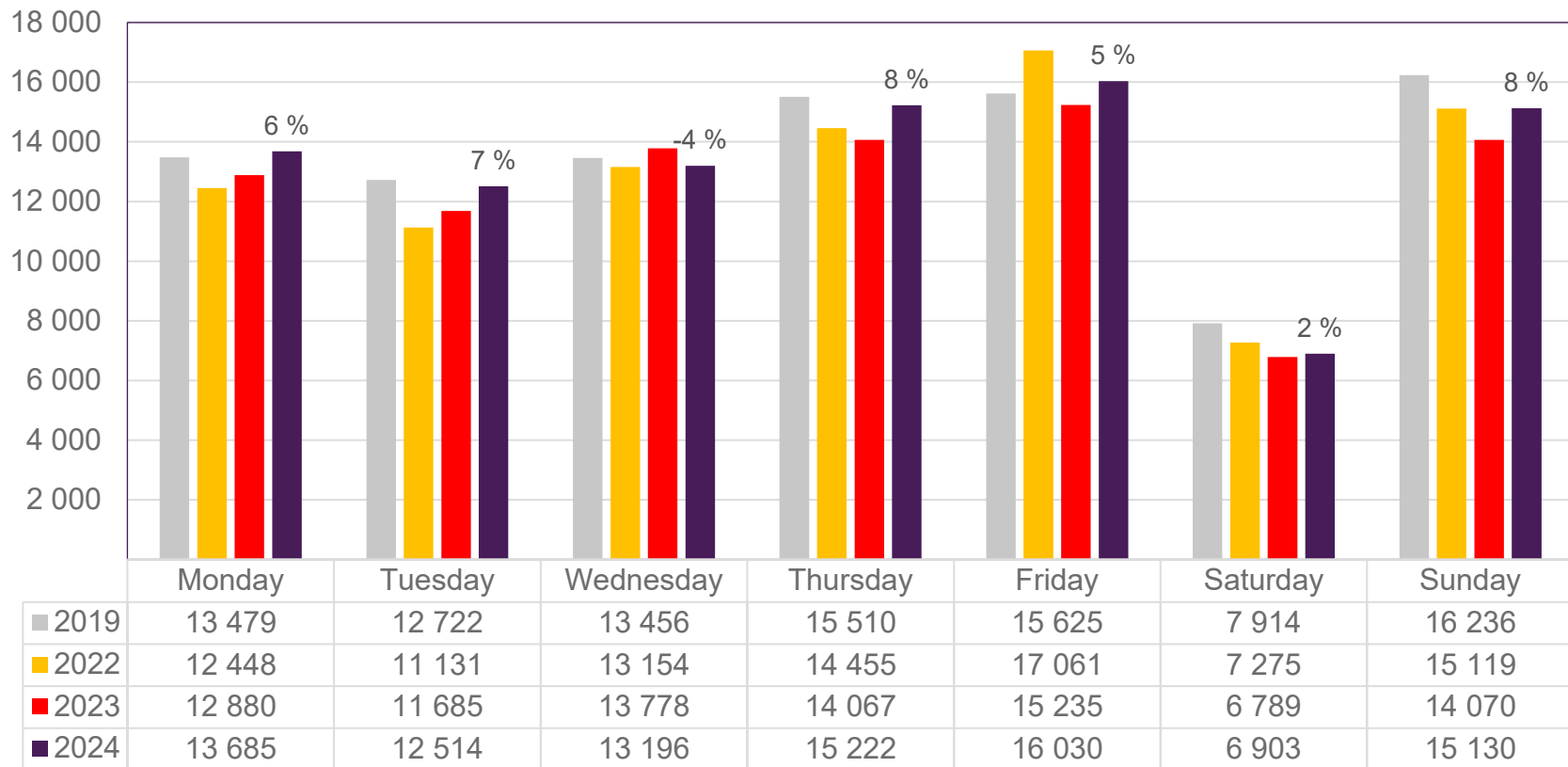


Passengers SVG domestic per week

The change is measured against the same week in 2023



Passengers TRD total per day, week 37

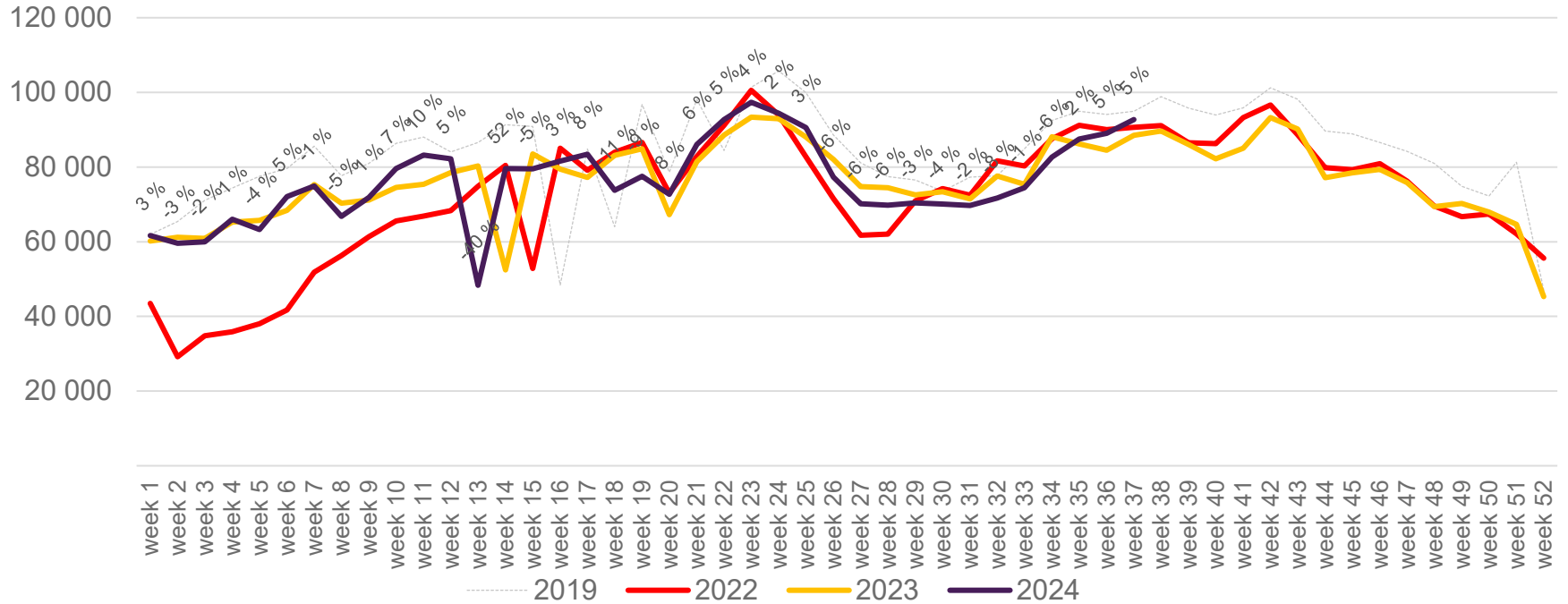


The change is measured against the same week in 2023

Source: SIA, Avinor Statistics

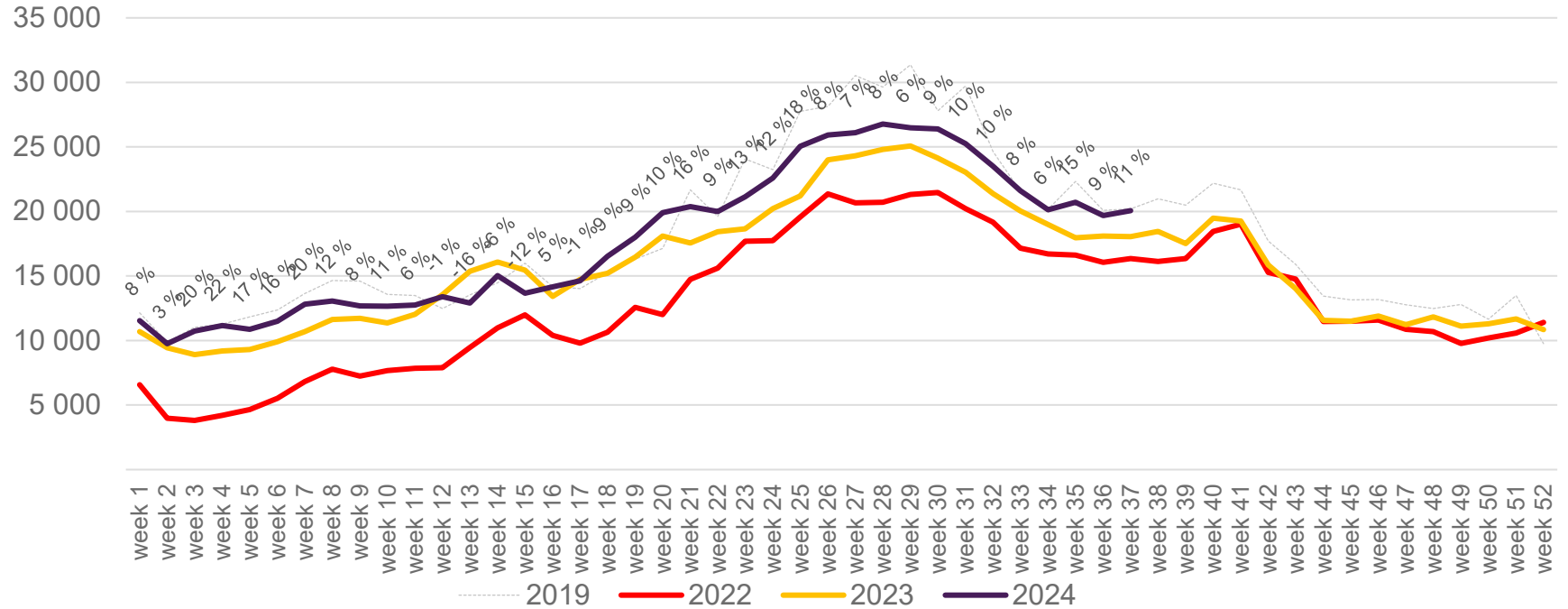
Passengers TRD total per week

The change is measured against the same week in 2023



Passengers TRD international per week

The change is measured against the same week in 2023



Passengers TRD domestic per week

The change is measured against the same week in 2023

