



Passenger numbers per week

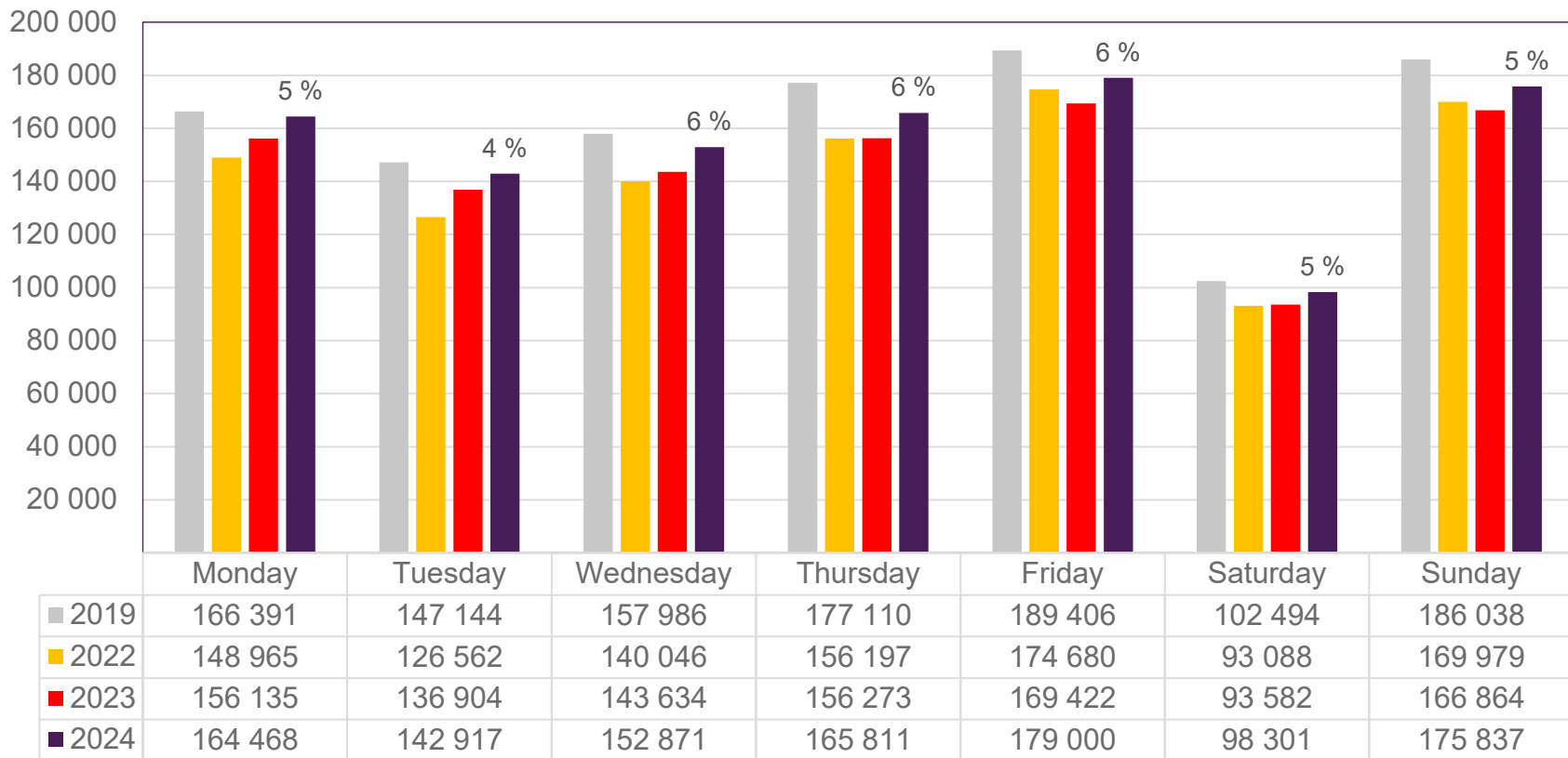
## Preliminary figures

- The figures for the previous week are preliminary. It takes some time for all passenger numbers to be reported, so the figures for the previous week may be lower than the final figures.
- The figures are taken from SIA, Avinor's traffic database.

# Top 10 airports, total week 36

Airport	2019	2022	2023	2024	2024 vs. 2023	
					Change	Change %
Oslo/Gardermoen	599 735	521 923	534 357	561 474	27 117	5 %
Bergen/Flesland	134 560	132 081	133 180	135 456	2 276	2 %
Trondheim/Værnes	94 114	90 019	84 511	89 046	4 535	5 %
Stavanger/Sola	85 350	74 351	81 825	79 503	-2 322	-3 %
Tromsø/Langnes	42 608	39 758	39 121	43 950	4 829	12 %
Bodø	37 871	35 741	34 232	42 215	7 983	23 %
Ålesund/Vigra	23 835	20 255	21 985	22 478	493	2 %
Harstad/Narvik/Evenes	14 582	16 640	16 556	18 937	2 381	14 %
Kristiansand/Kjevik	23 523	18 055	17 546	17 733	187	1 %
Bardufoss	4 300	3 476	3 717	3 886	169	5 %

# Passengers Avinor total per day, week 36

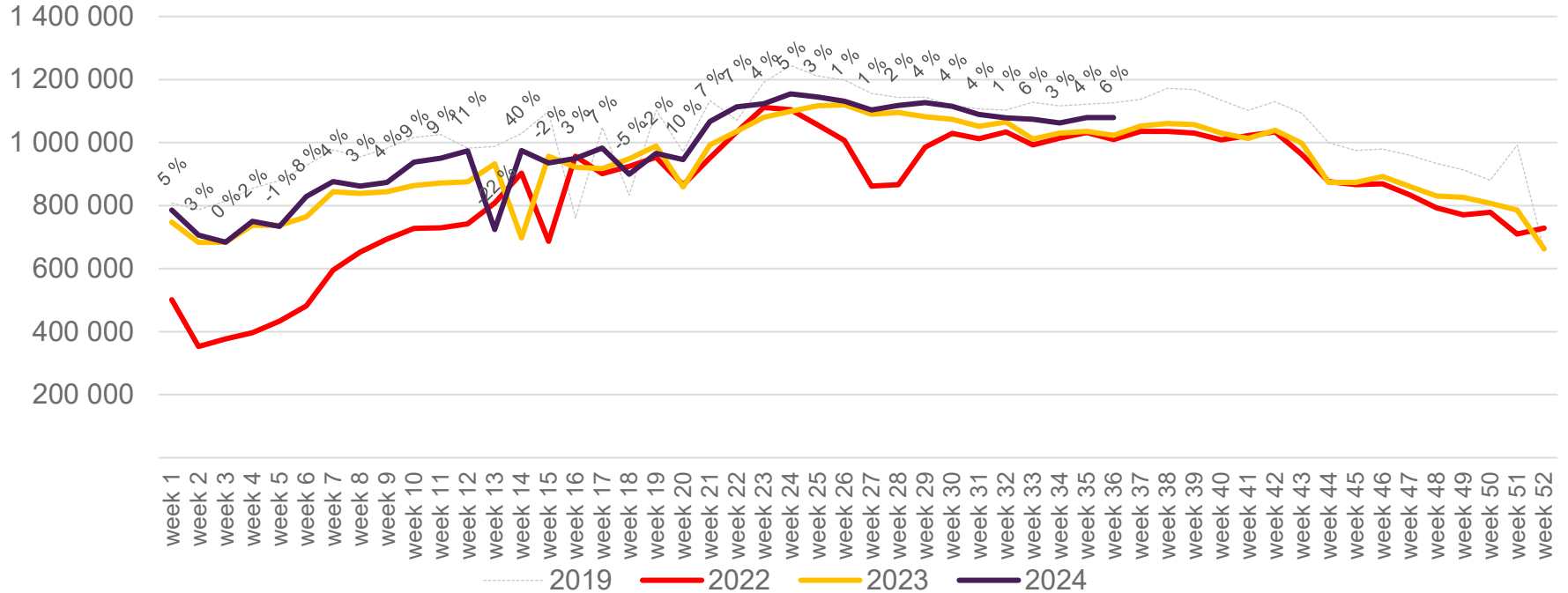


The change is measured against the same week in 2023

Source: SIA, Avinor Statistics

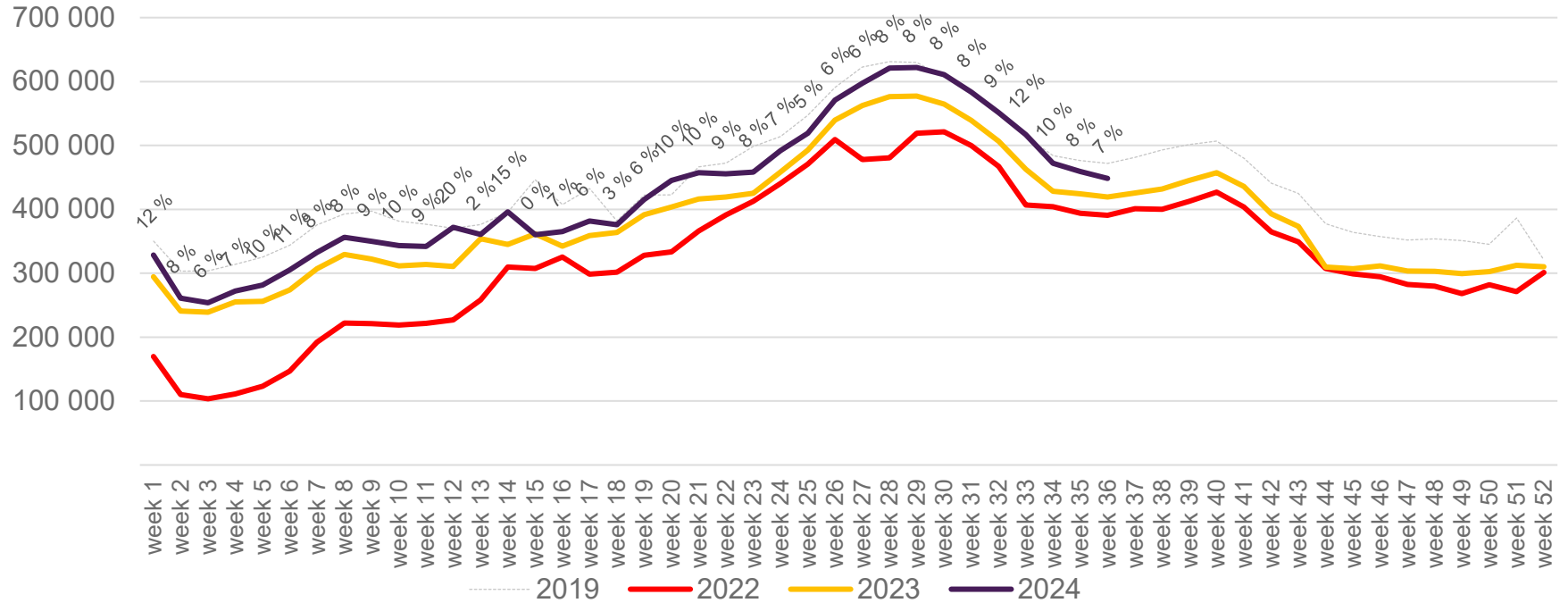
# Passengers Avinor total per week

The change is measured against the same week in 2023



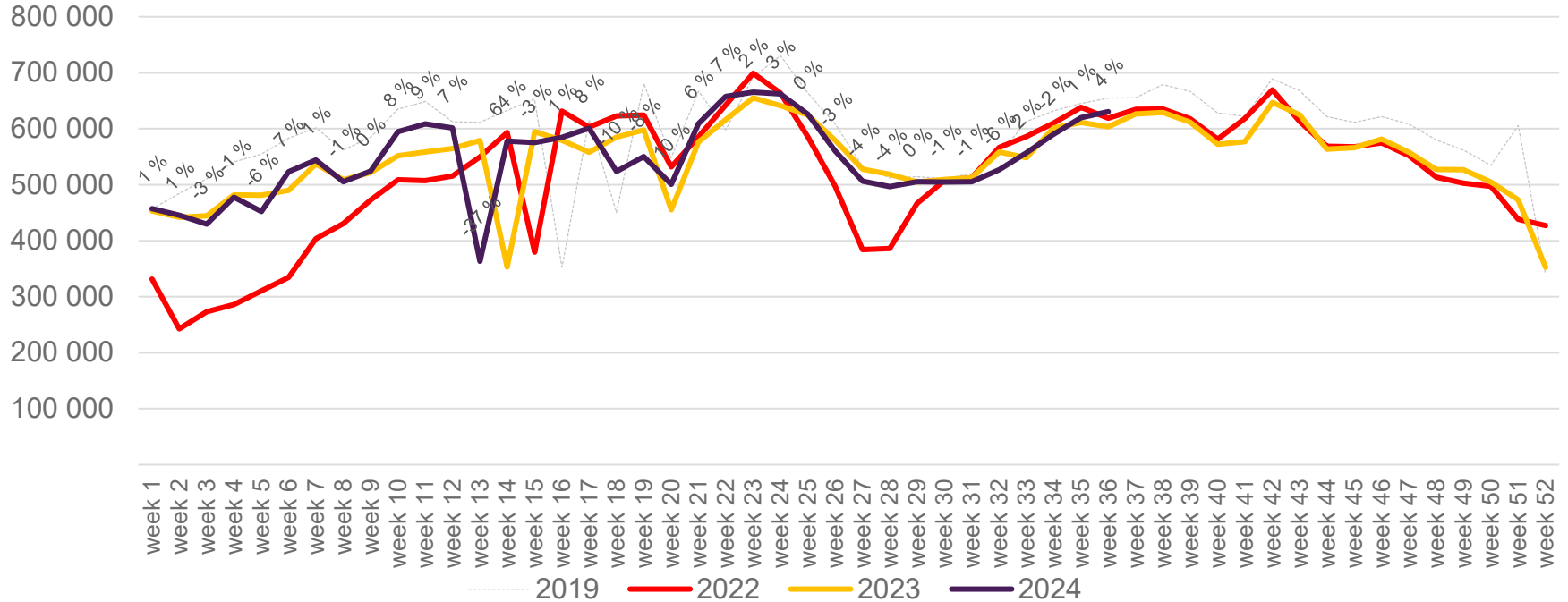
# Passengers Avinor international per week

The change is measured against the same week in 2023

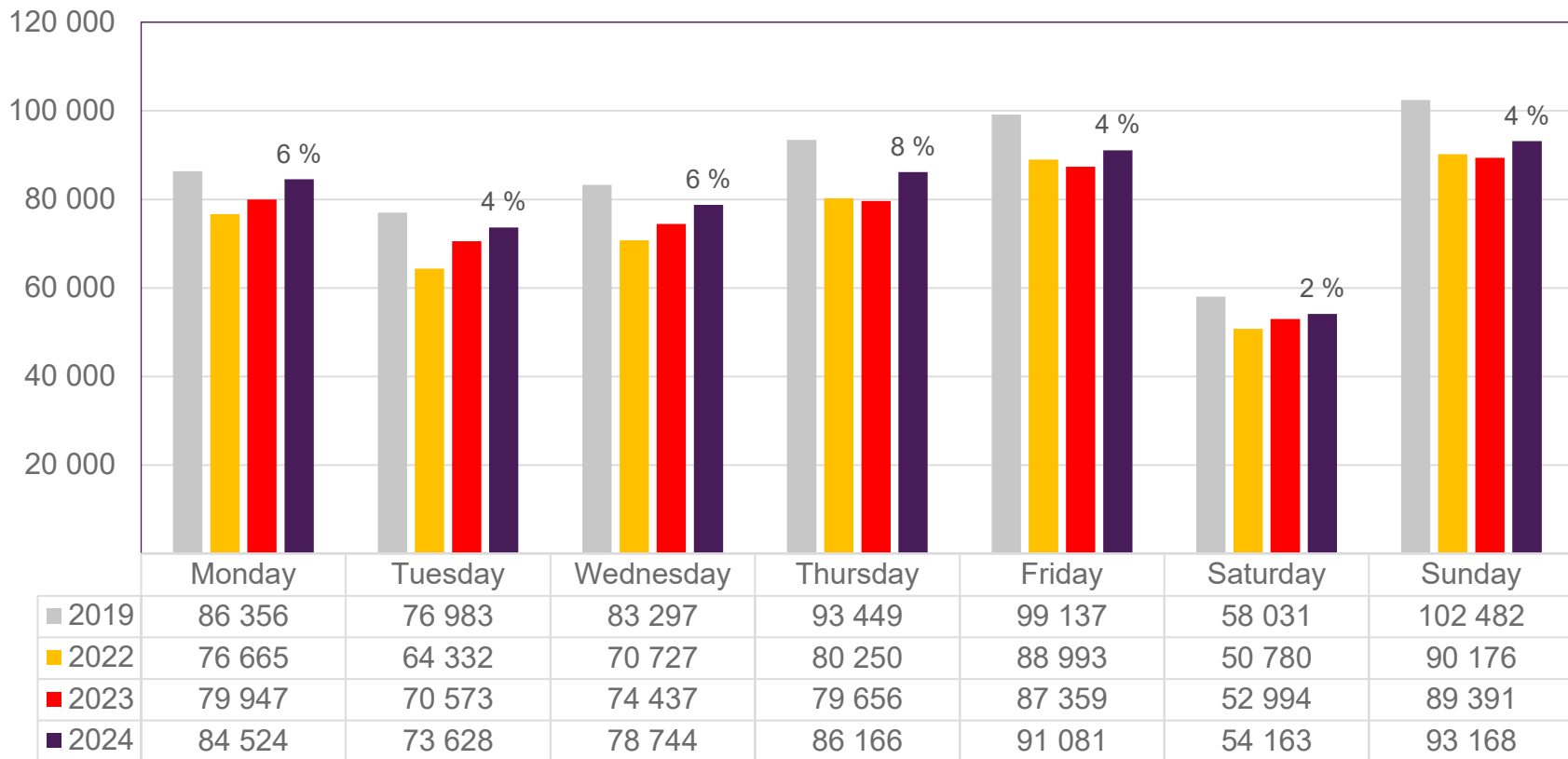


# Passengers Avinor domestic per week

The change is measured against the same week in 2023



# Passengers OSL total per day, week 36



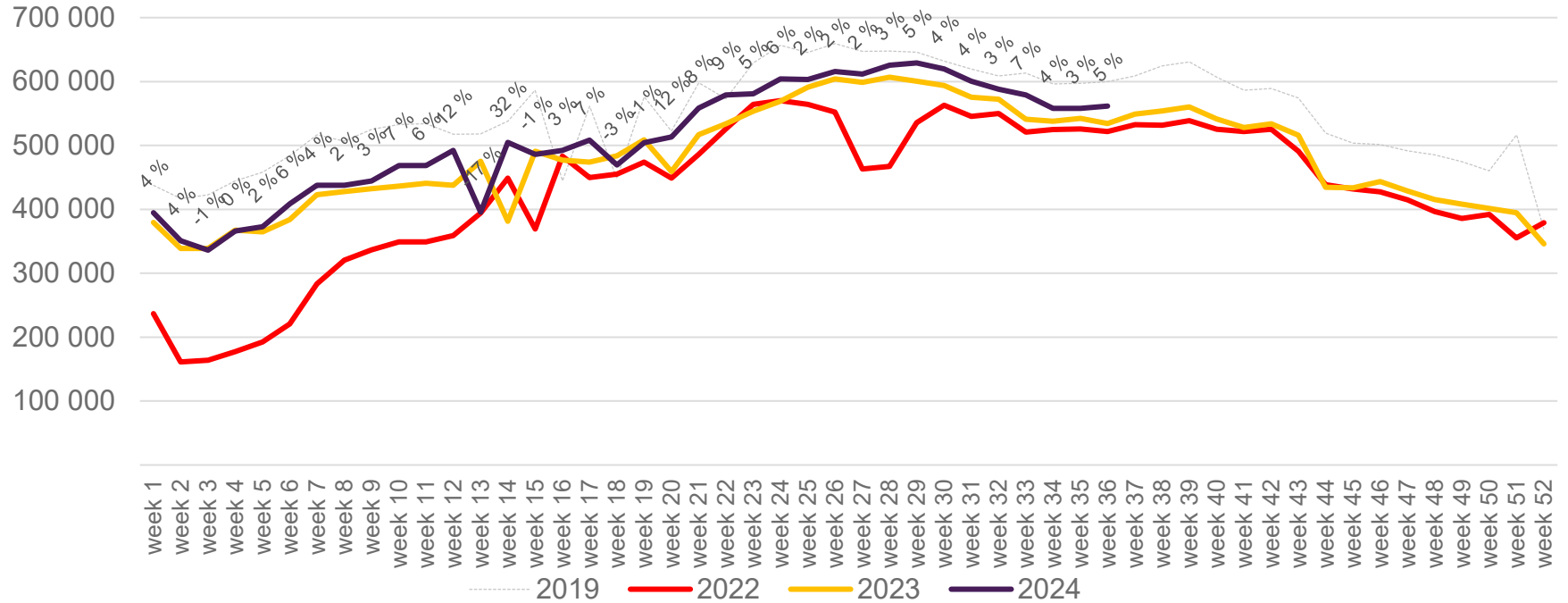
The change is measured against the same week in 2023

Source: SIA, Avinor Statistics



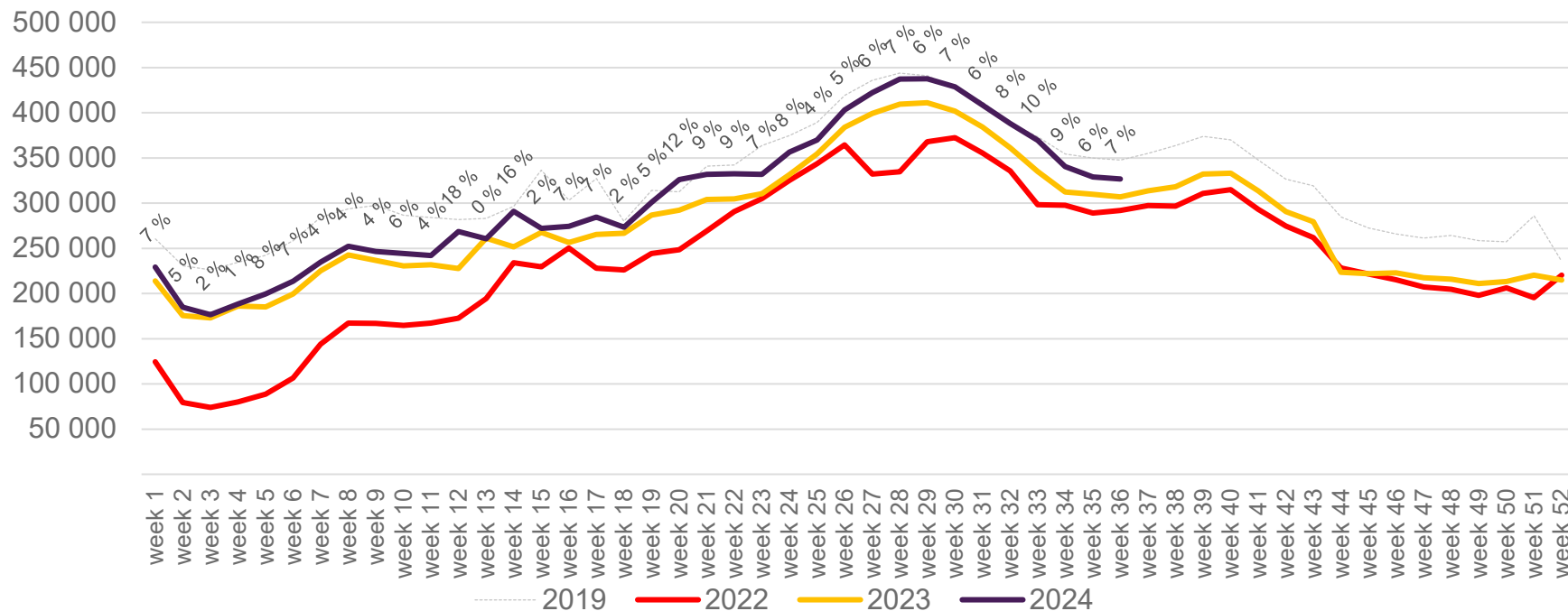
# Passengers OSL total per week

The change is measured against the same week in 2023



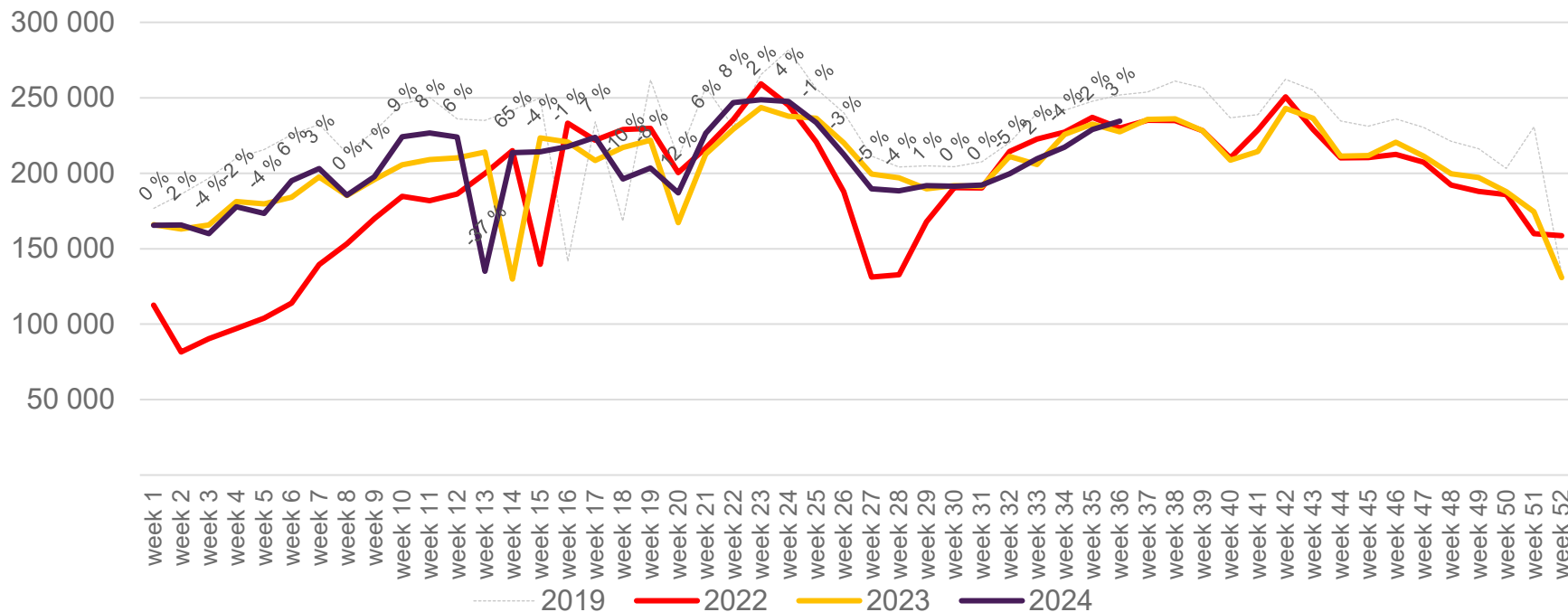
# Passengers OSL international per week

The change is measured against the same week in 2023

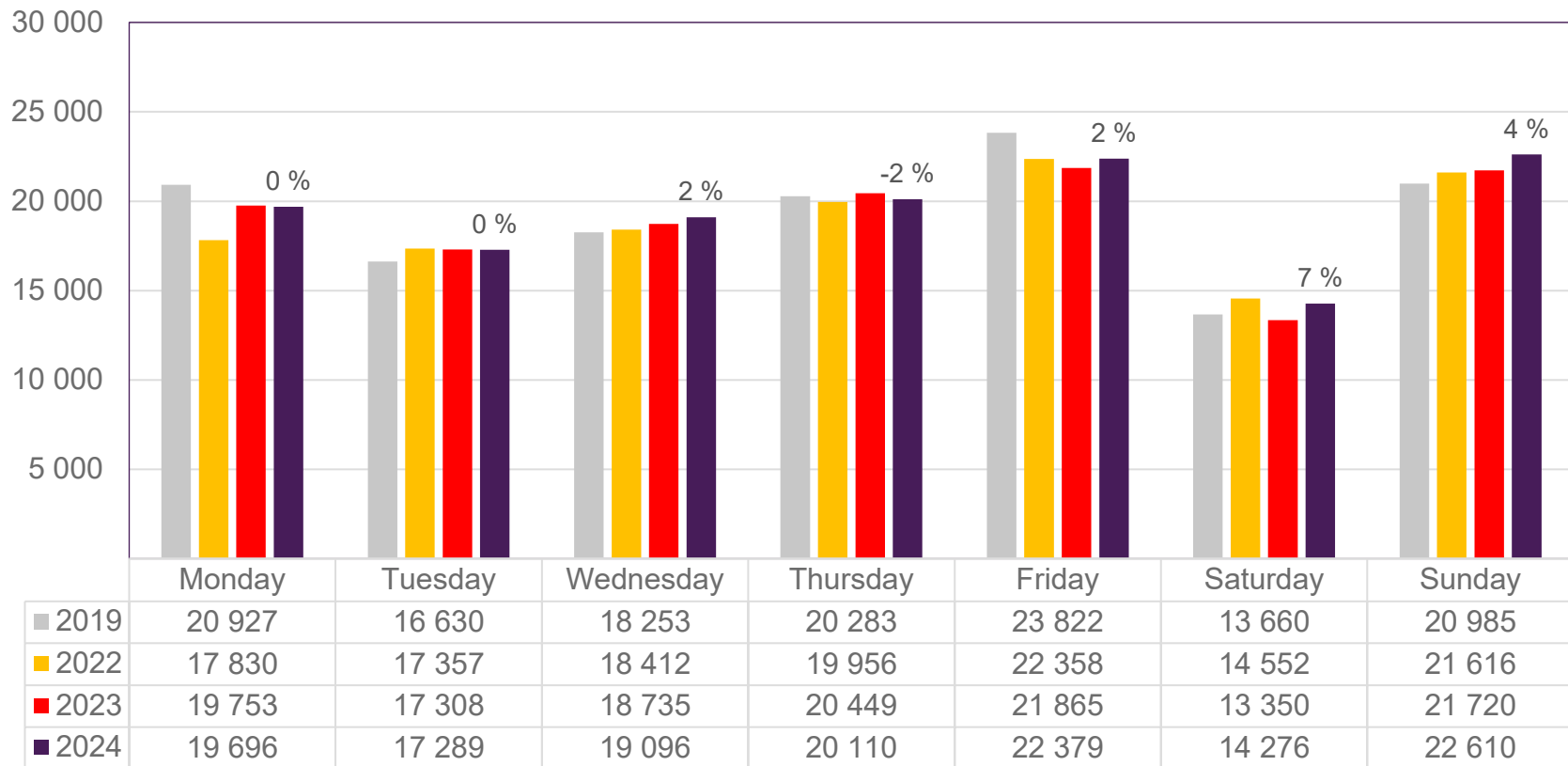


# Passengers OSL domestic per week

The change is measured against the same week in 2023



# Passengers BGO total per day, week 36

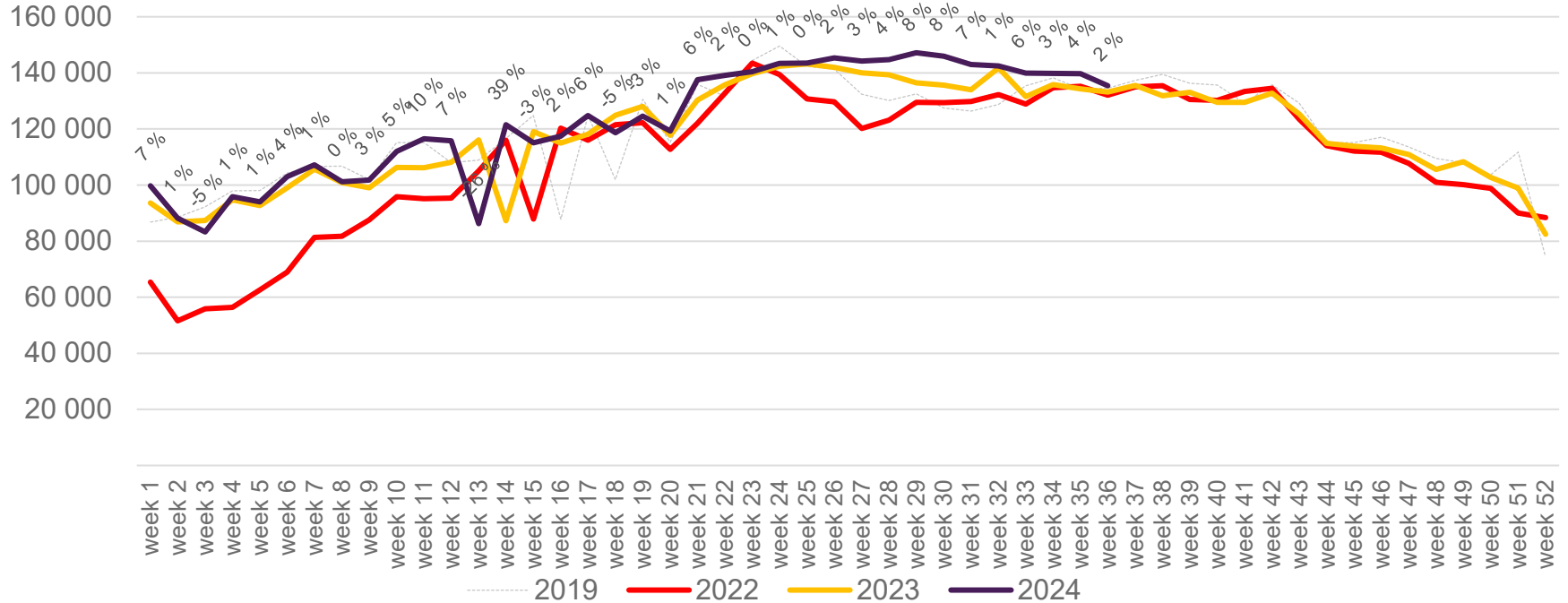


The change is measured against the same week in 2023

Source: SIA, Avinor Statistics

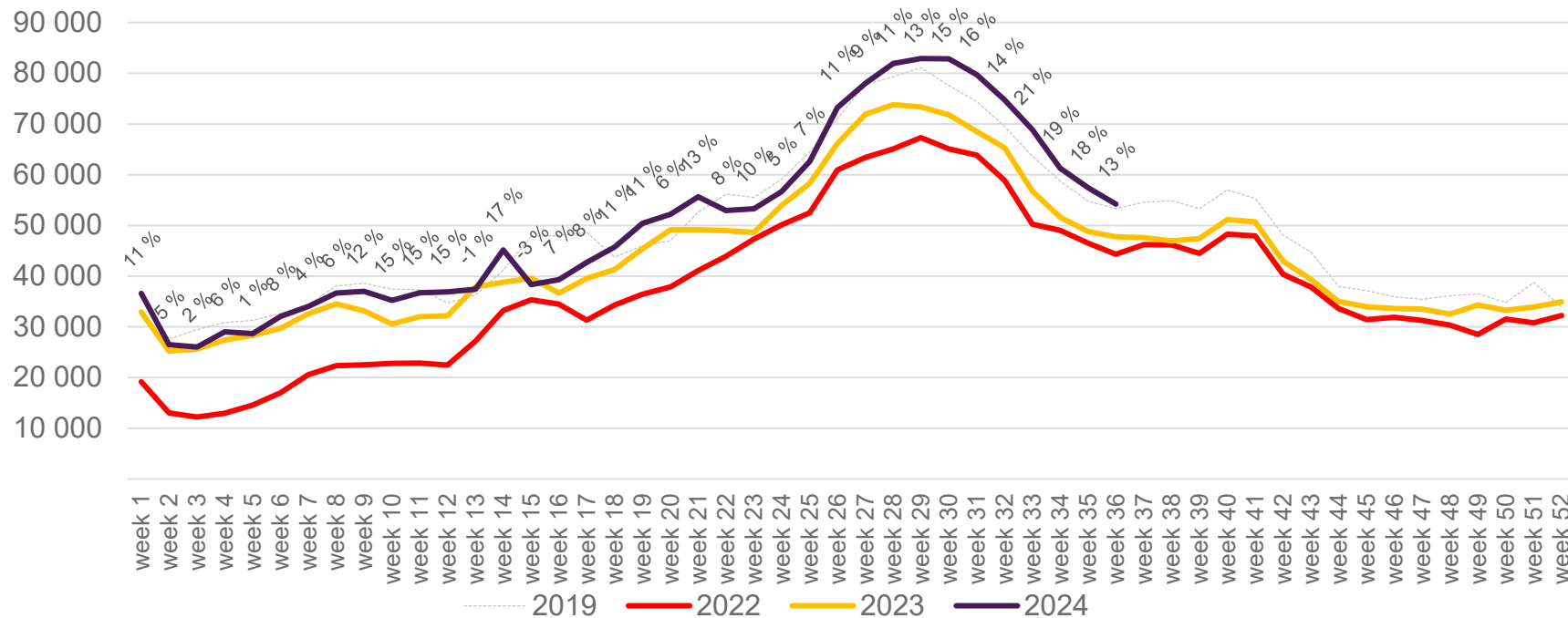
# Passengers BGO total per week

The change is measured against the same week in 2023



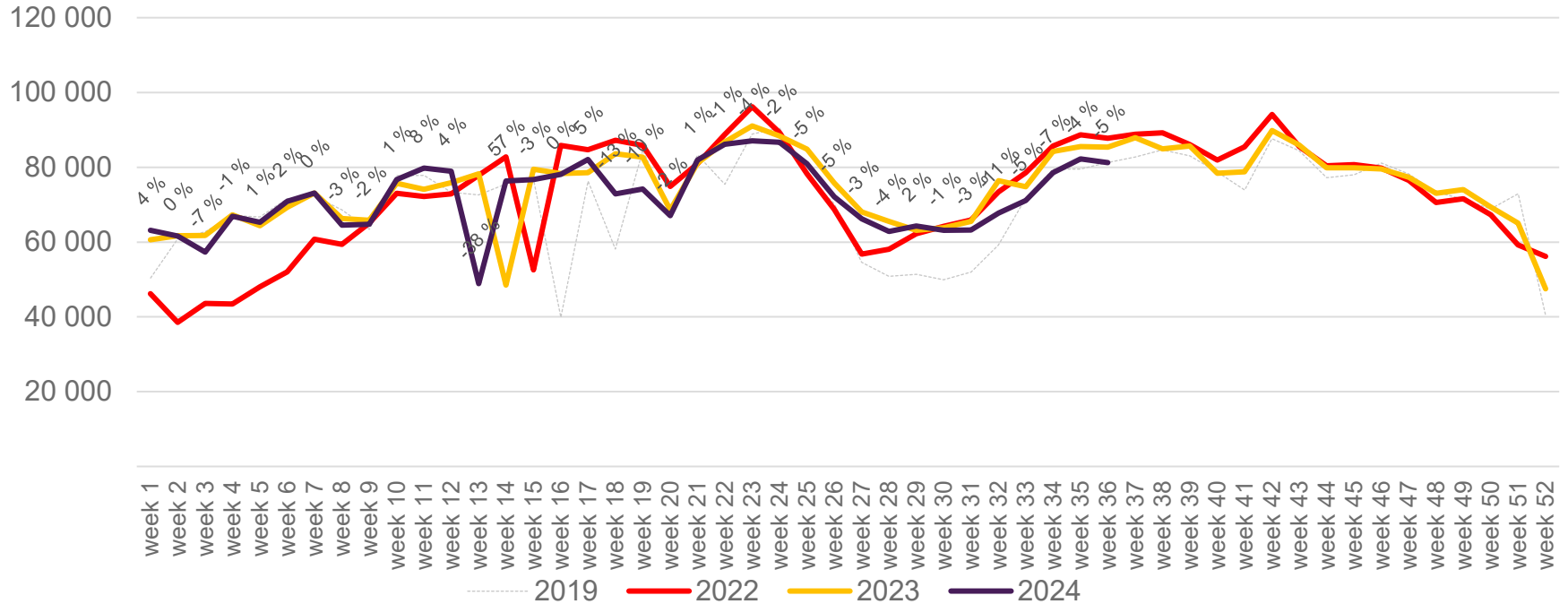
# Passengers BGO international per week

The change is measured against the same week in 2023

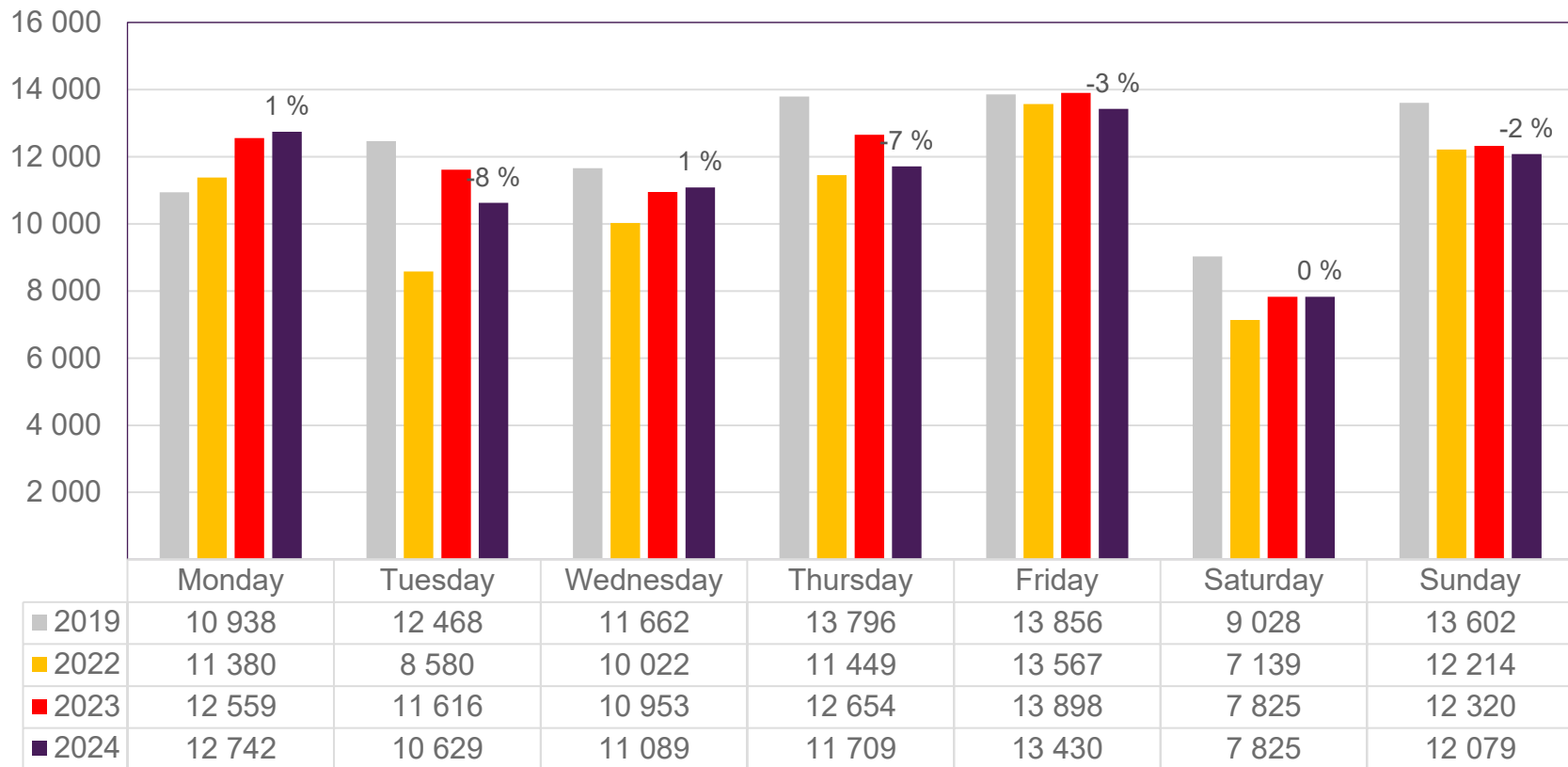


# Passengers BGO domestic per week

The change is measured against the same week in 2023



# Passengers SVG total per day, week 36



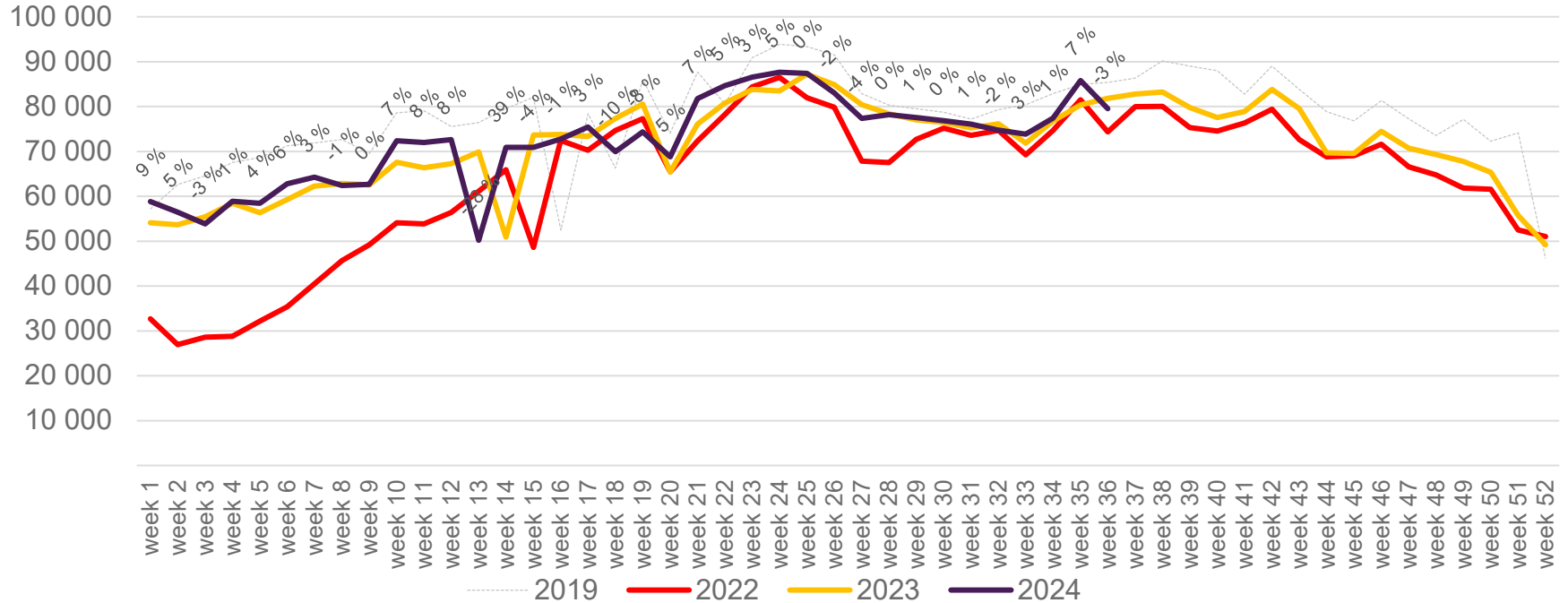
The change is measured against the same week in 2023

Source: SIA, Avinor Statistics



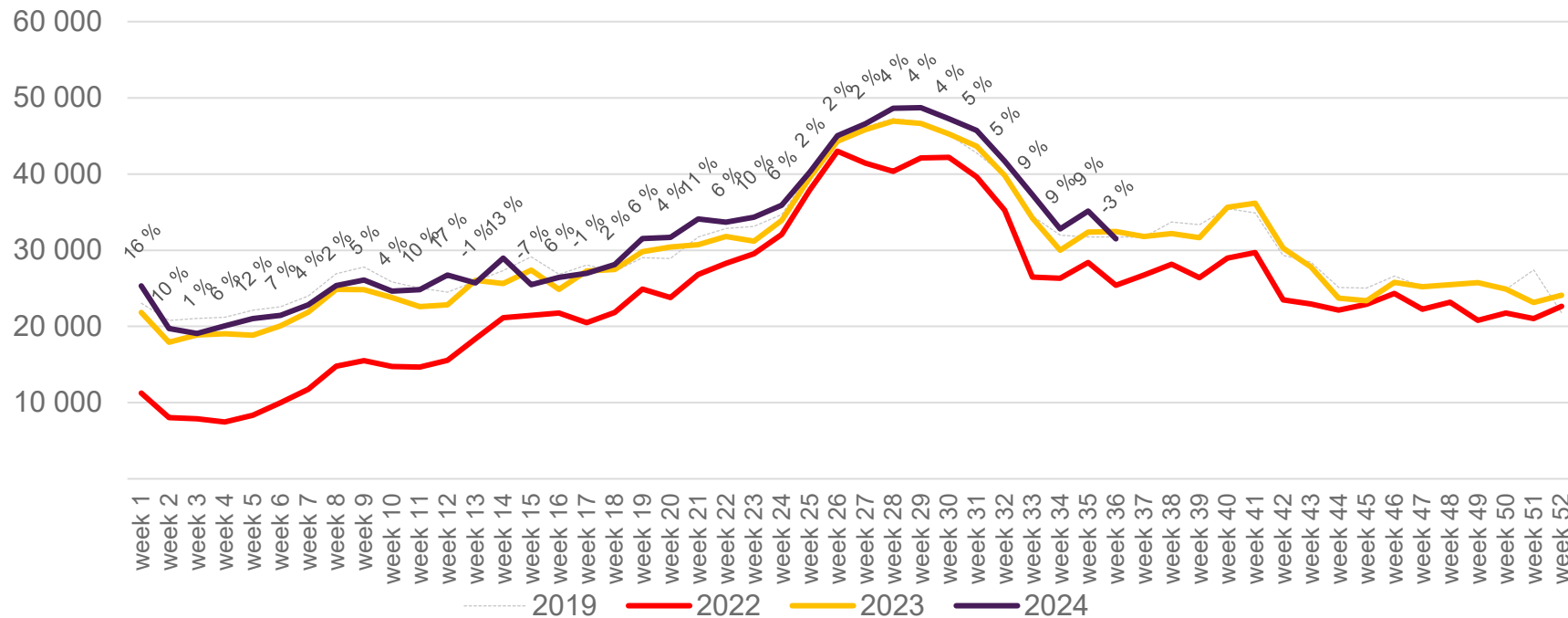
# Passengers SVG total per week

The change is measured against the same week in 2023



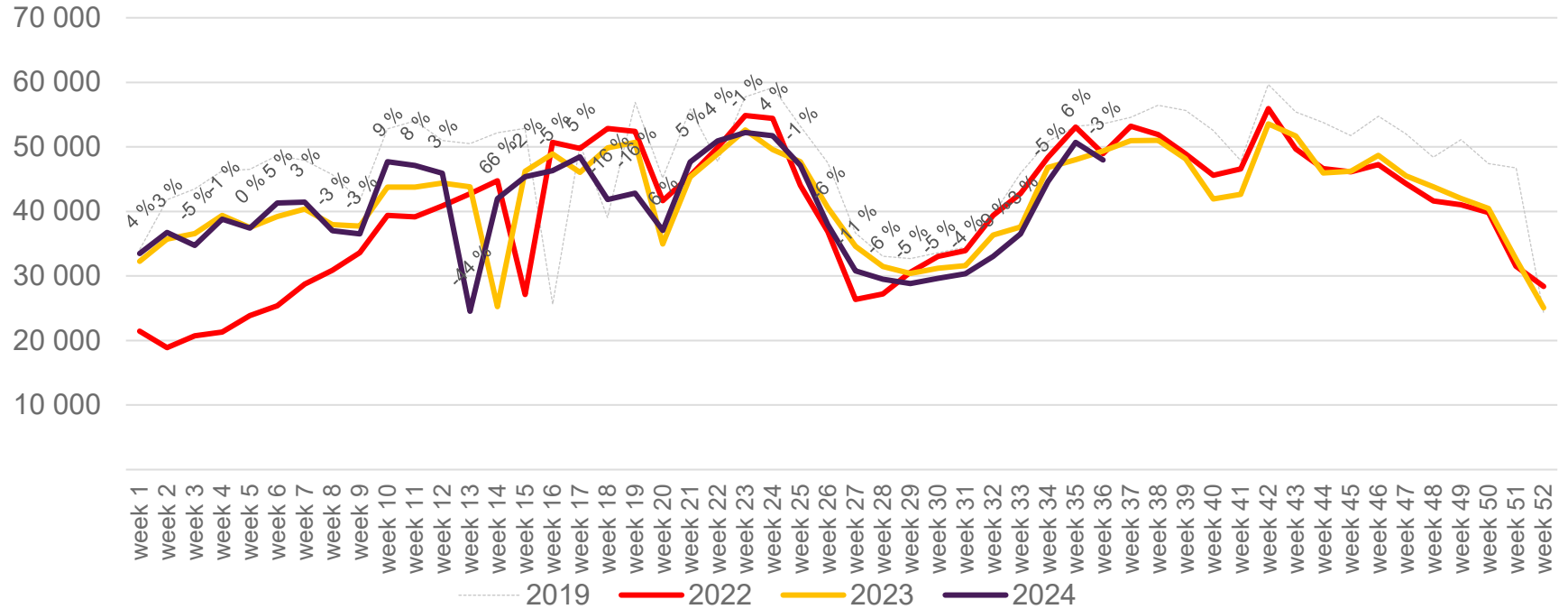
# Passengers SVG international per week

The change is measured against the same week in 2023

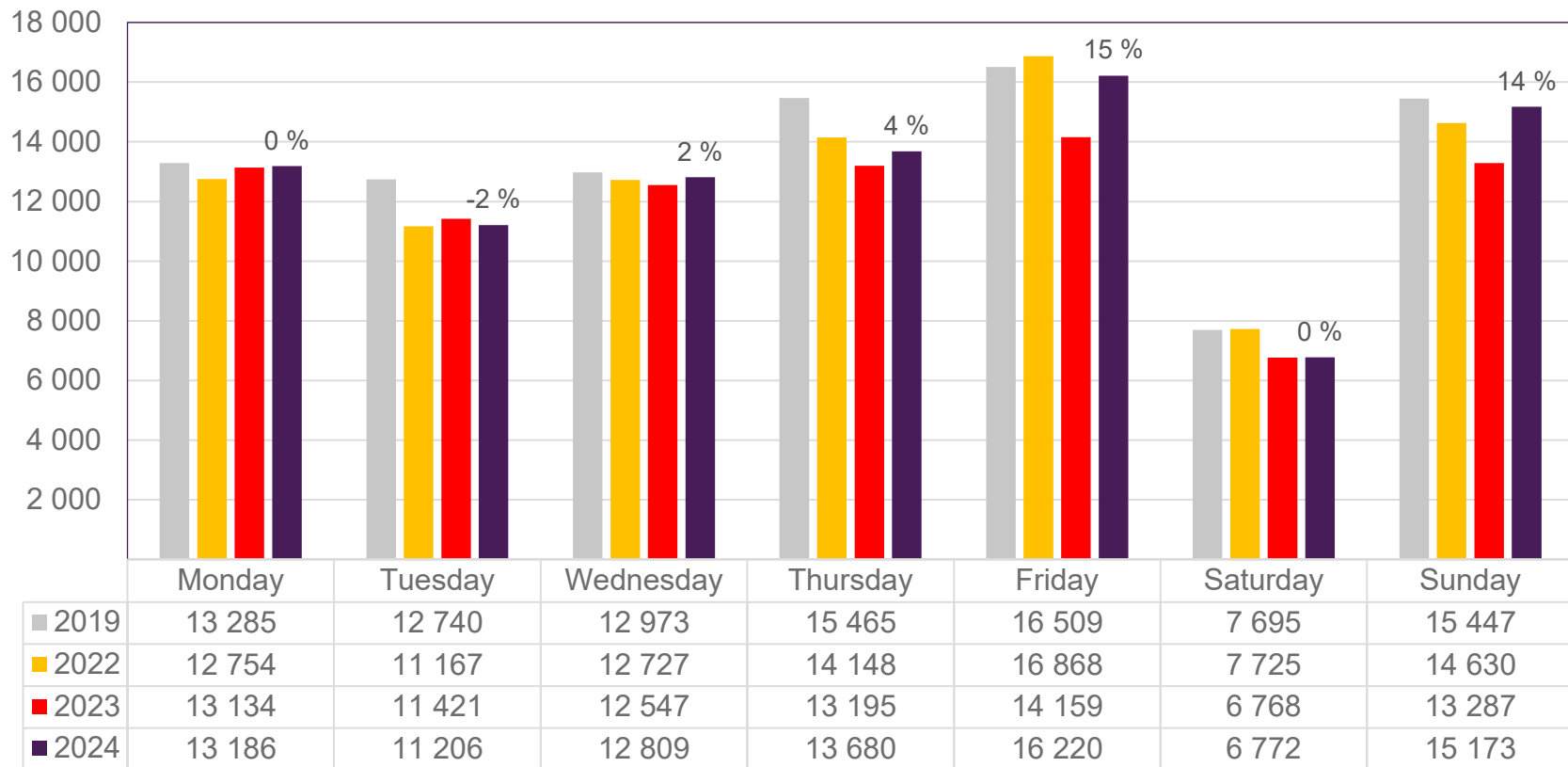


# Passengers SVG domestic per week

The change is measured against the same week in 2023



# Passengers TRD total per day, week 36

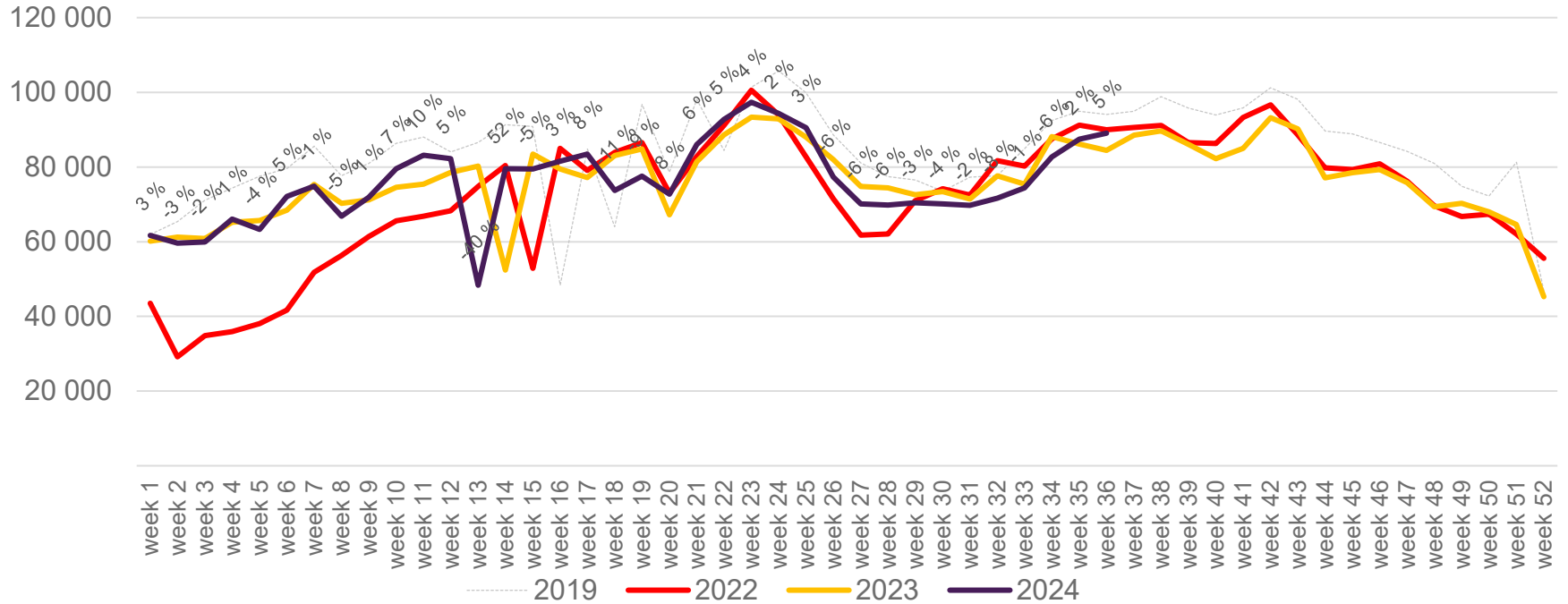


The change is measured against the same week in 2023

Source: SIA, Avinor Statistics

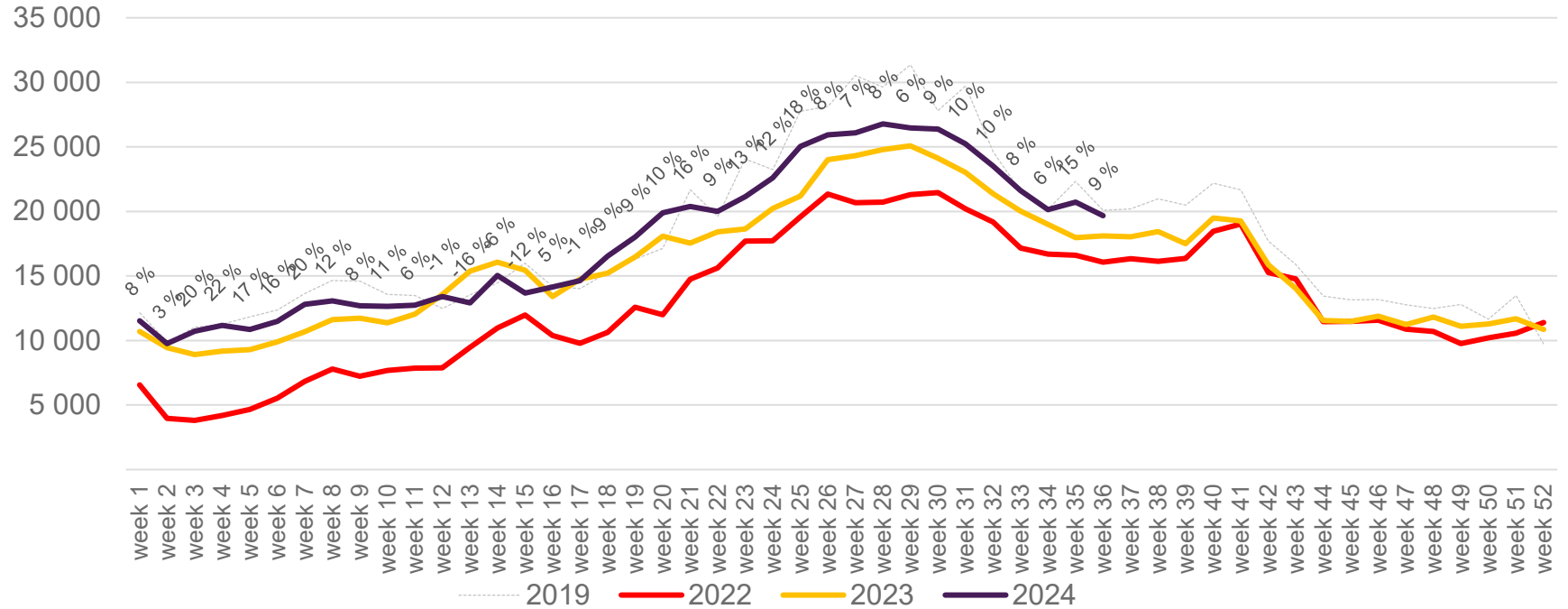
# Passengers TRD total per week

The change is measured against the same week in 2023



# Passengers TRD international per week

The change is measured against the same week in 2023



# Passengers TRD domestic per week

The change is measured against the same week in 2023

