



Passenger numbers per week

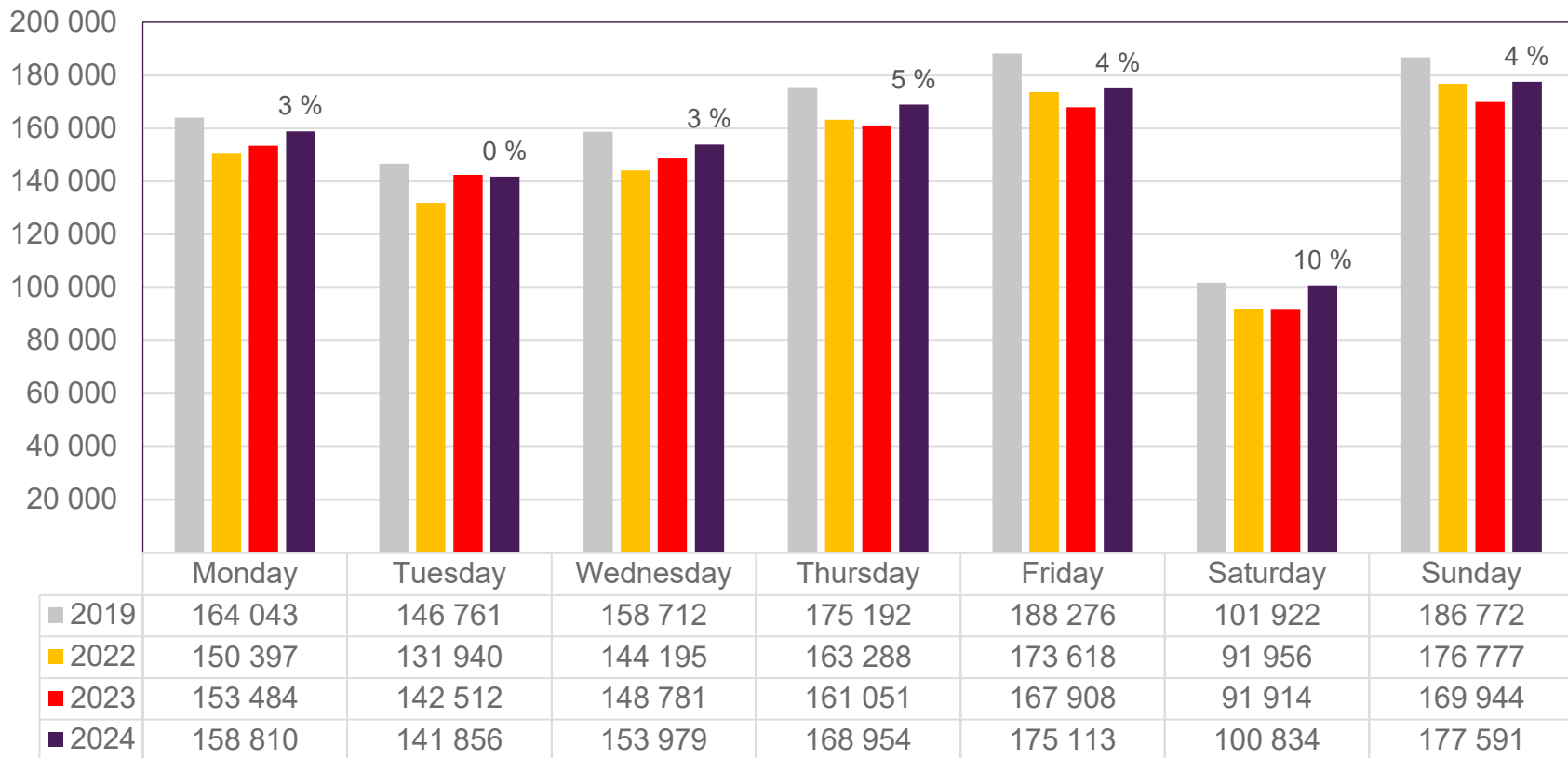
Preliminary figures

- The figures for the previous week are preliminary. It takes some time for all passenger numbers to be reported, so the figures for the previous week may be lower than the final figures.
- The figures are taken from SIA, Avinor's traffic database.

Top 10 airports, total week 35

Airport	2019	2022	2023	2024	2024 vs. 2023	
					Change	Change %
Oslo/Gardermoen	597 433	526 019	542 317	557 107	14 790	3 %
Bergen/Flesland	134 334	135 226	134 315	139 193	4 878	4 %
Trondheim/Værnes	94 946	91 193	86 175	87 335	1 160	1 %
Stavanger/Sola	84 958	81 494	80 379	85 700	5 321	7 %
Tromsø/Langnes	42 726	42 149	39 553	44 192	4 639	12 %
Bodø	37 937	37 237	36 004	39 782	3 778	10 %
Ålesund/Vigra	23 196	21 903	22 335	22 508	173	1 %
Harstad/Narvik/Evenes	15 381	17 715	16 642	17 458	816	5 %
Kristiansand/Kjevik	22 208	17 747	17 683	16 550	-1 133	-6 %
Bardufoss	4 674	2 939	3 767	3 814	47	1 %

Passengers Avinor total per day, week 35

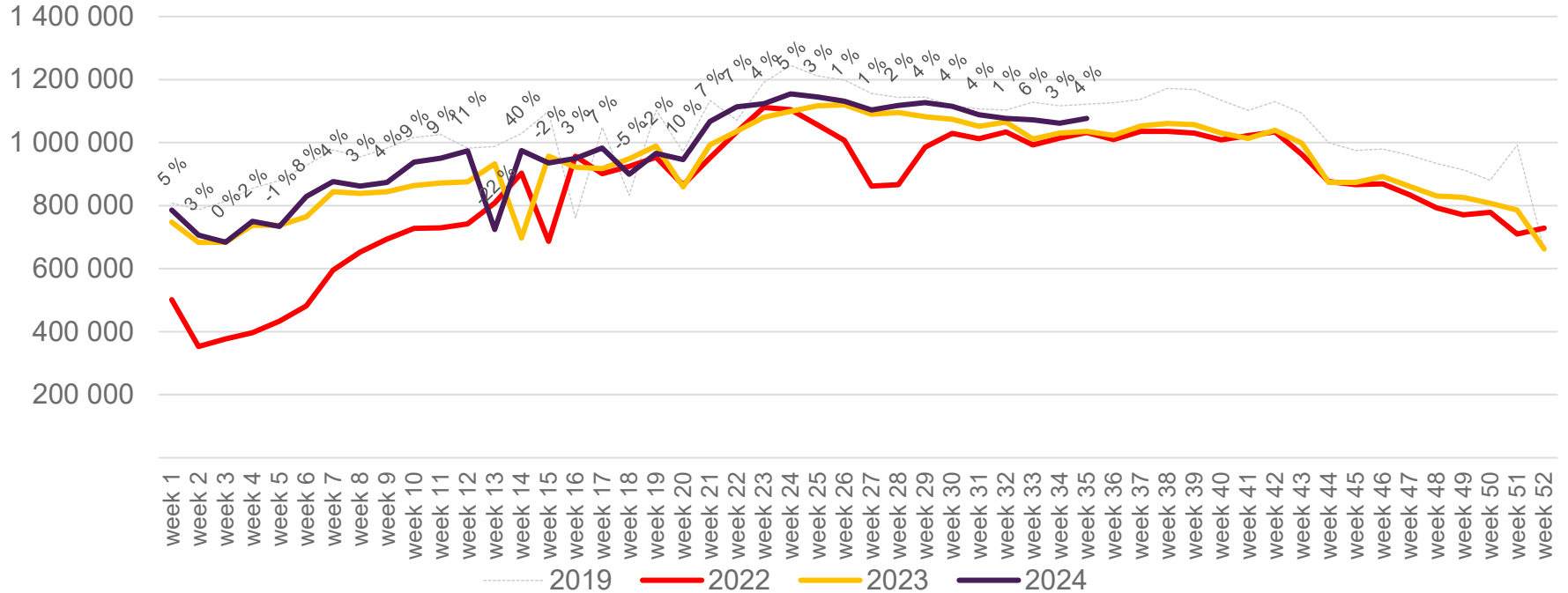


The change is measured against the same week in 2023

Source: SIA, Avinor Statistics

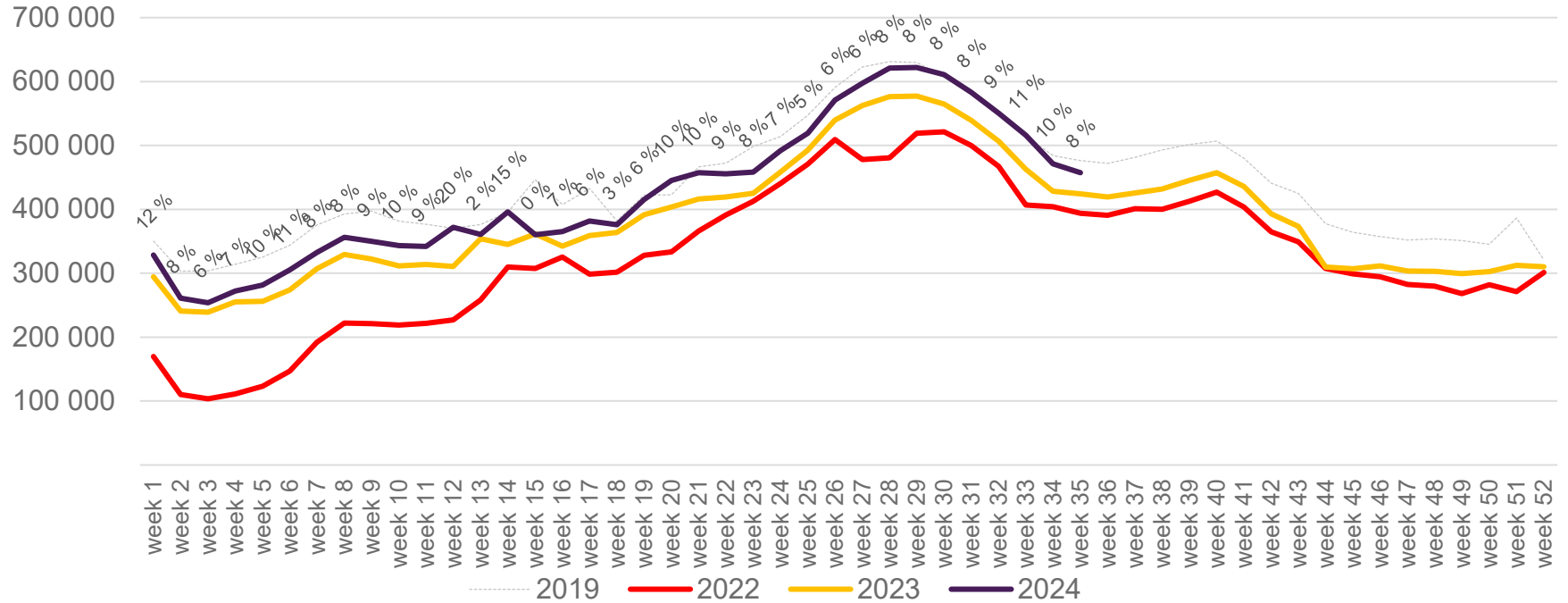
Passengers Avinor total per week

The change is measured against the same week in 2023



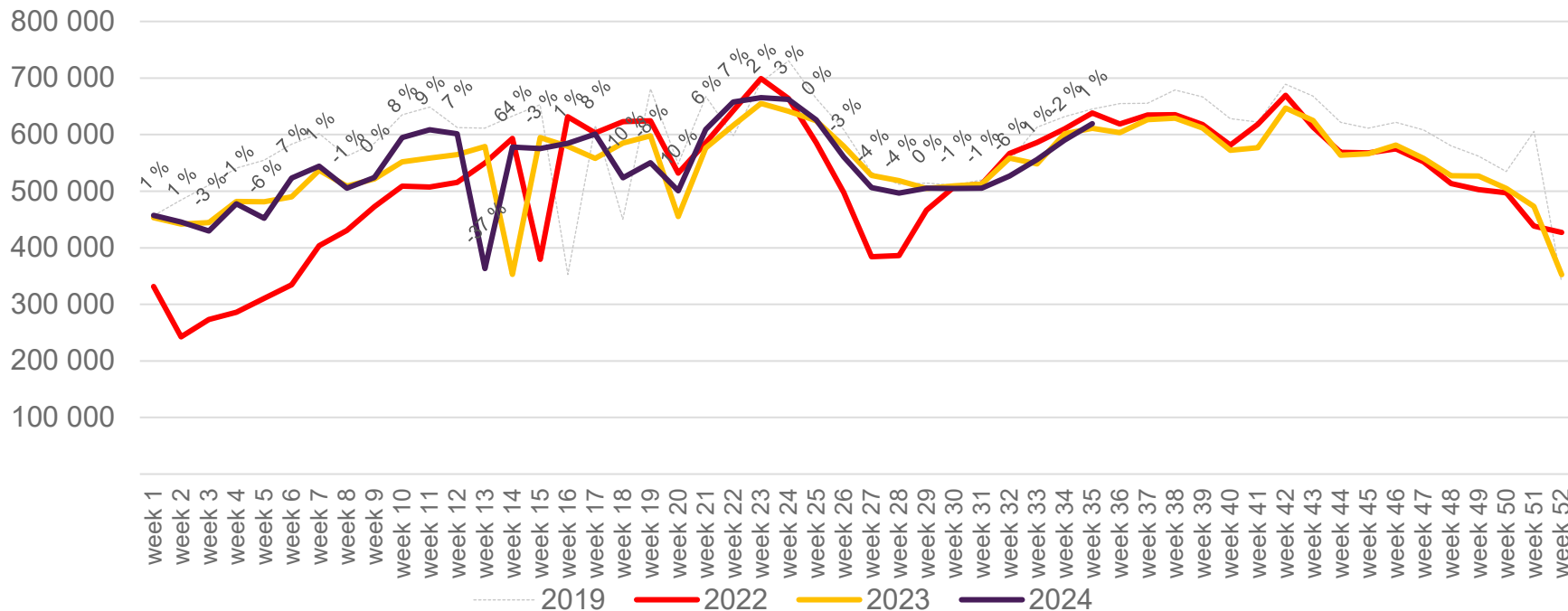
Passengers Avinor international per week

The change is measured against the same week in 2023

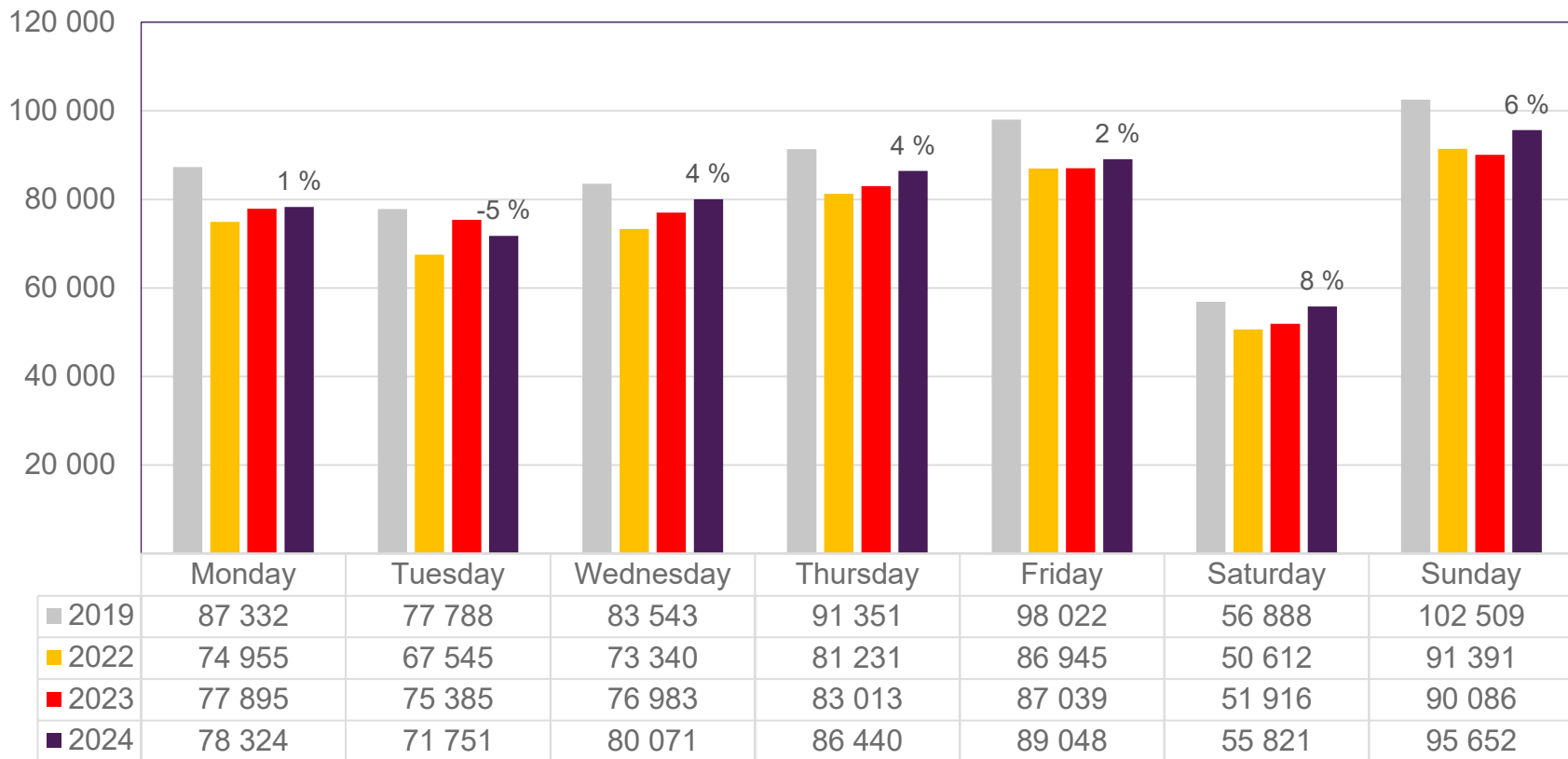


Passengers Avinor domestic per week

The change is measured against the same week in 2023



Passengers OSL total per day, week 35

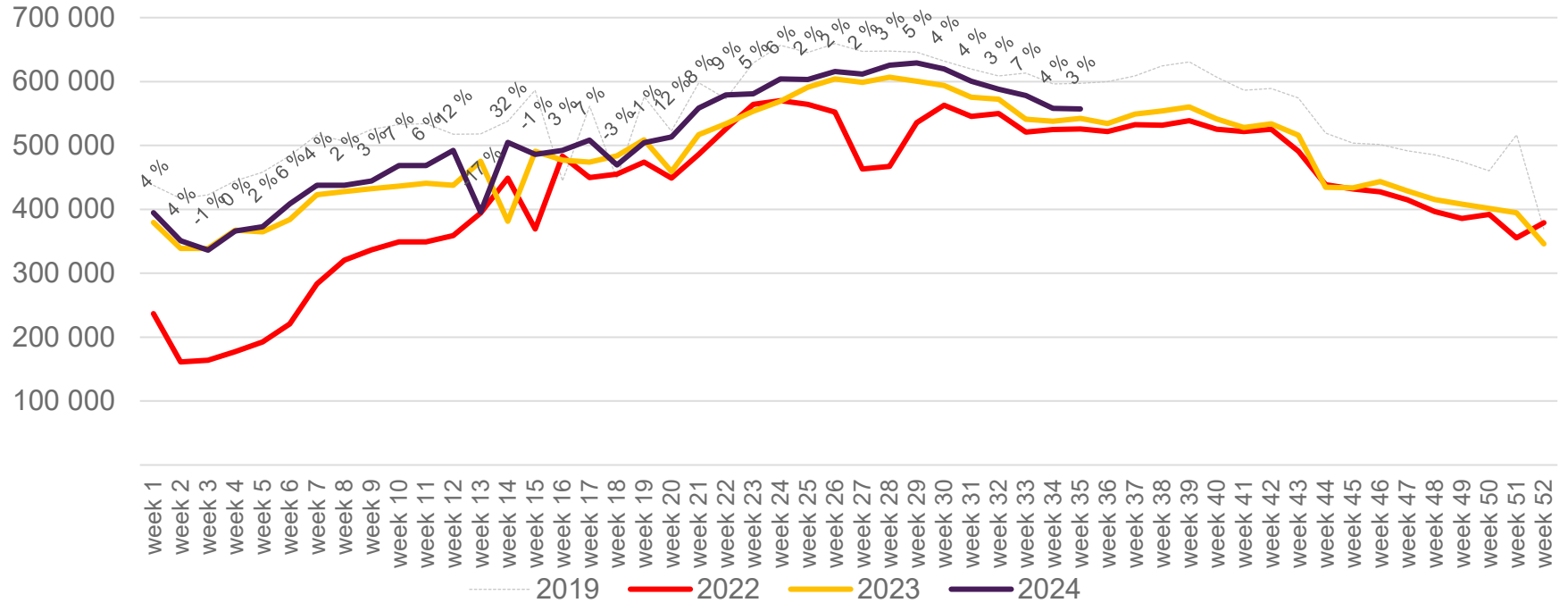


The change is measured against the same week in 2023

Source: SIA, Avinor Statistics

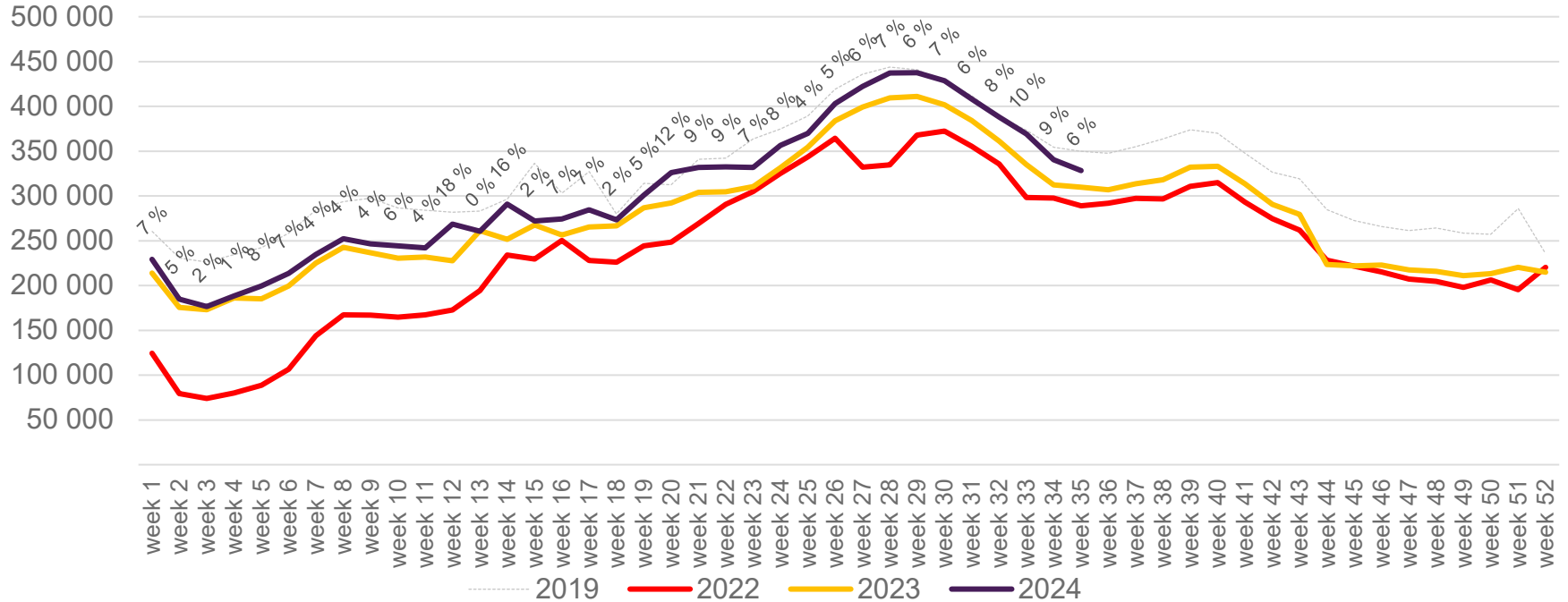
Passengers OSL total per week

The change is measured against the same week in 2023



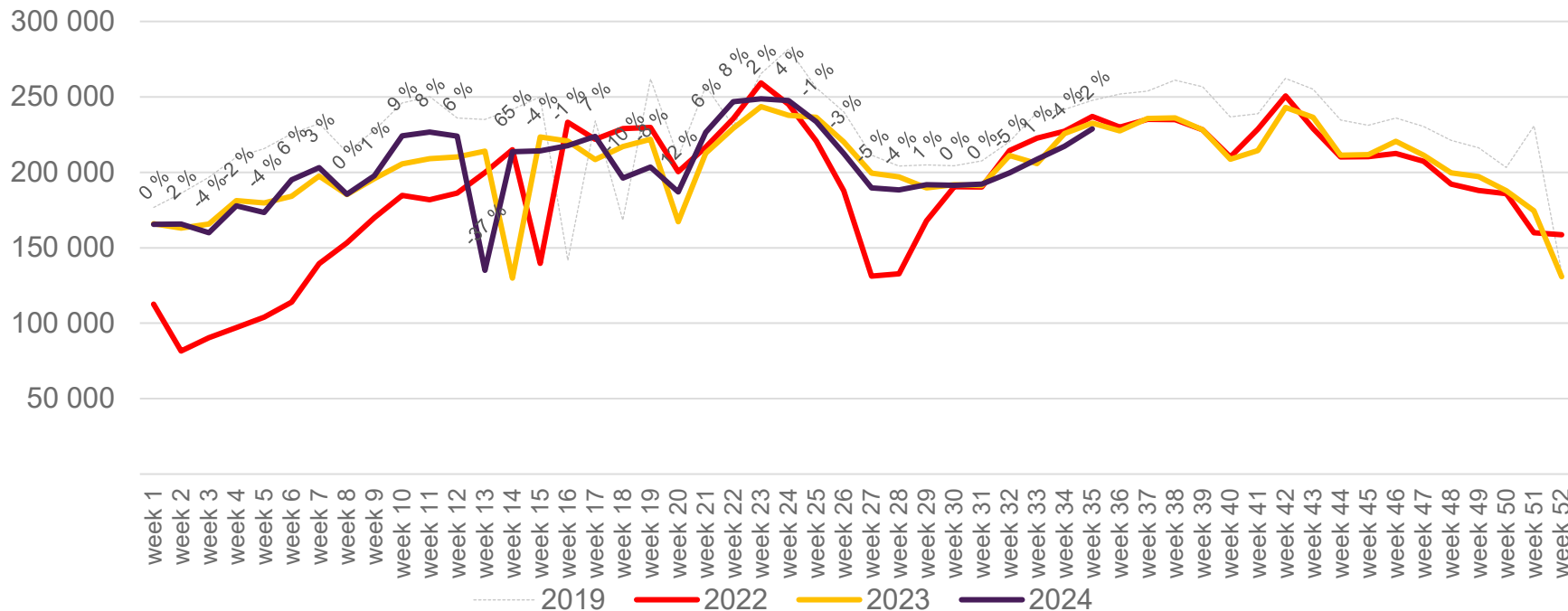
Passengers OSL international per week

The change is measured against the same week in 2023

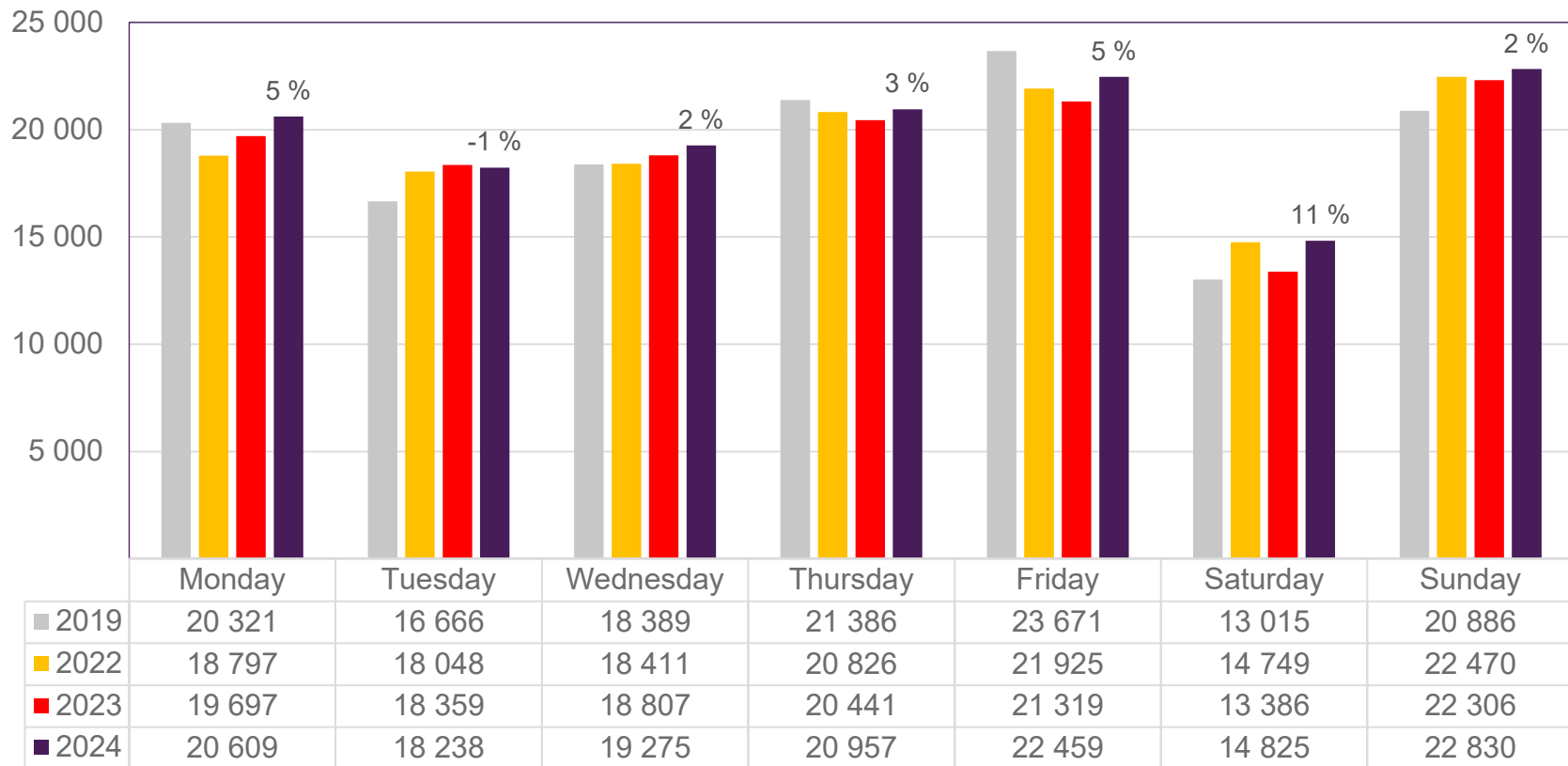


Passengers OSL domestic per week

The change is measured against the same week in 2023



Passengers BGO total per day, week 35

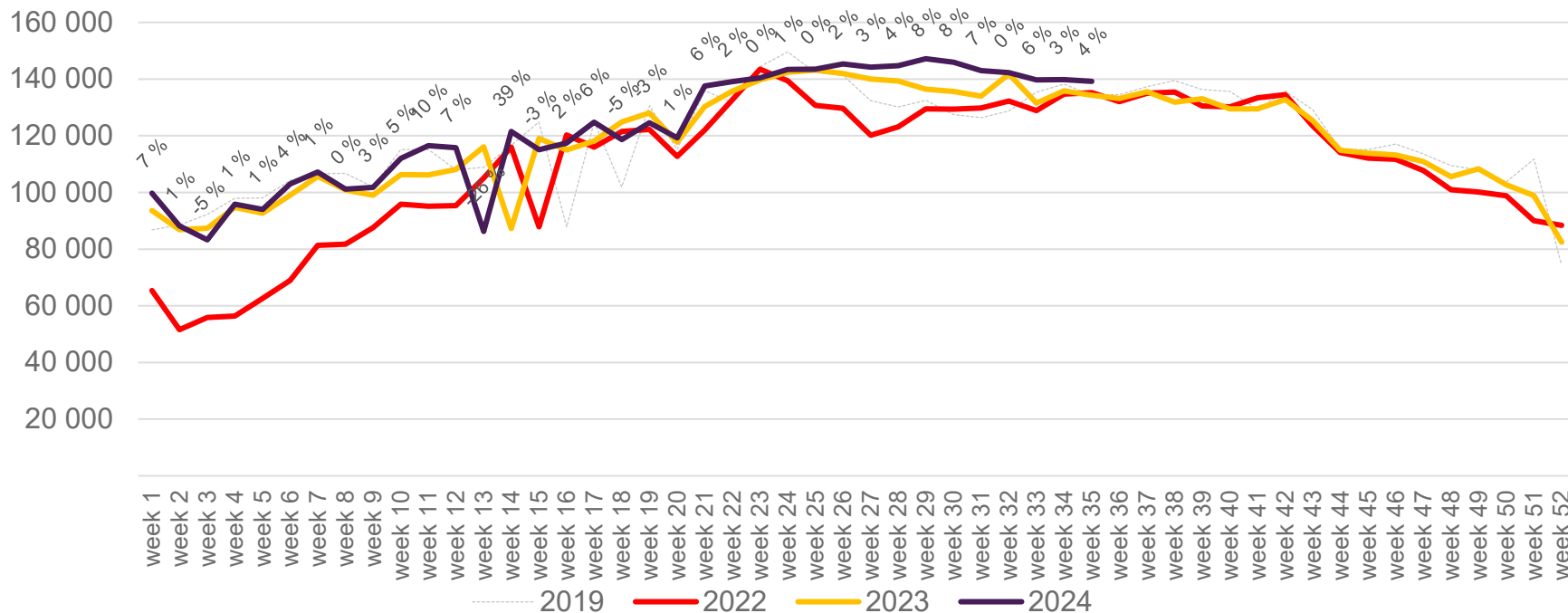


The change is measured against the same week in 2023

Source: SIA, Avinor Statistics

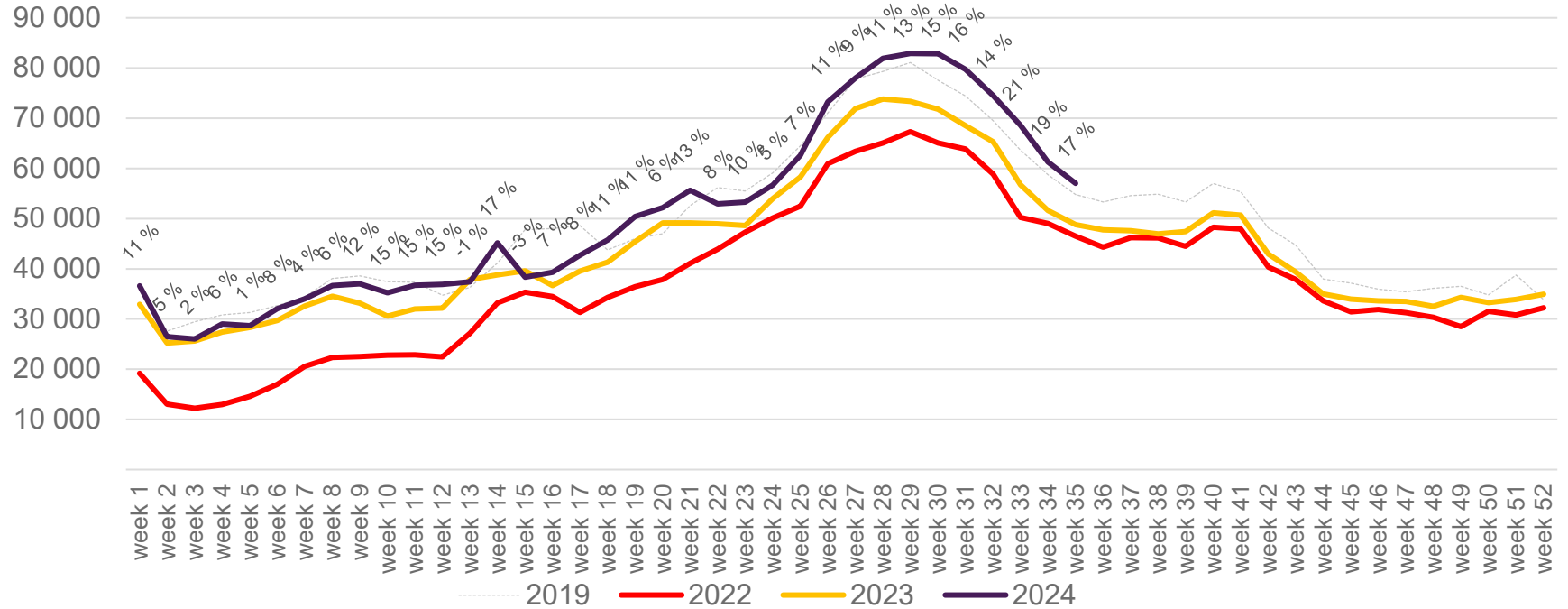
Passengers BGO total per week

The change is measured against the same week in 2023



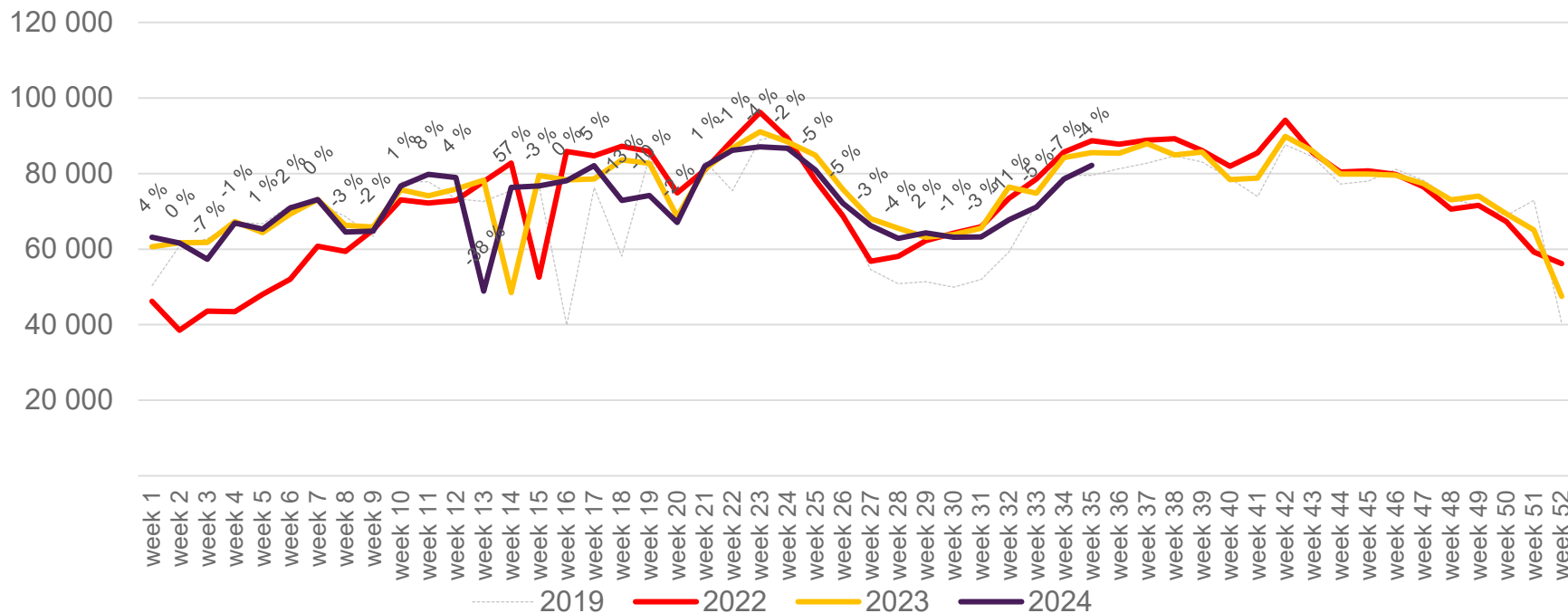
Passengers BGO international per week

The change is measured against the same week in 2023

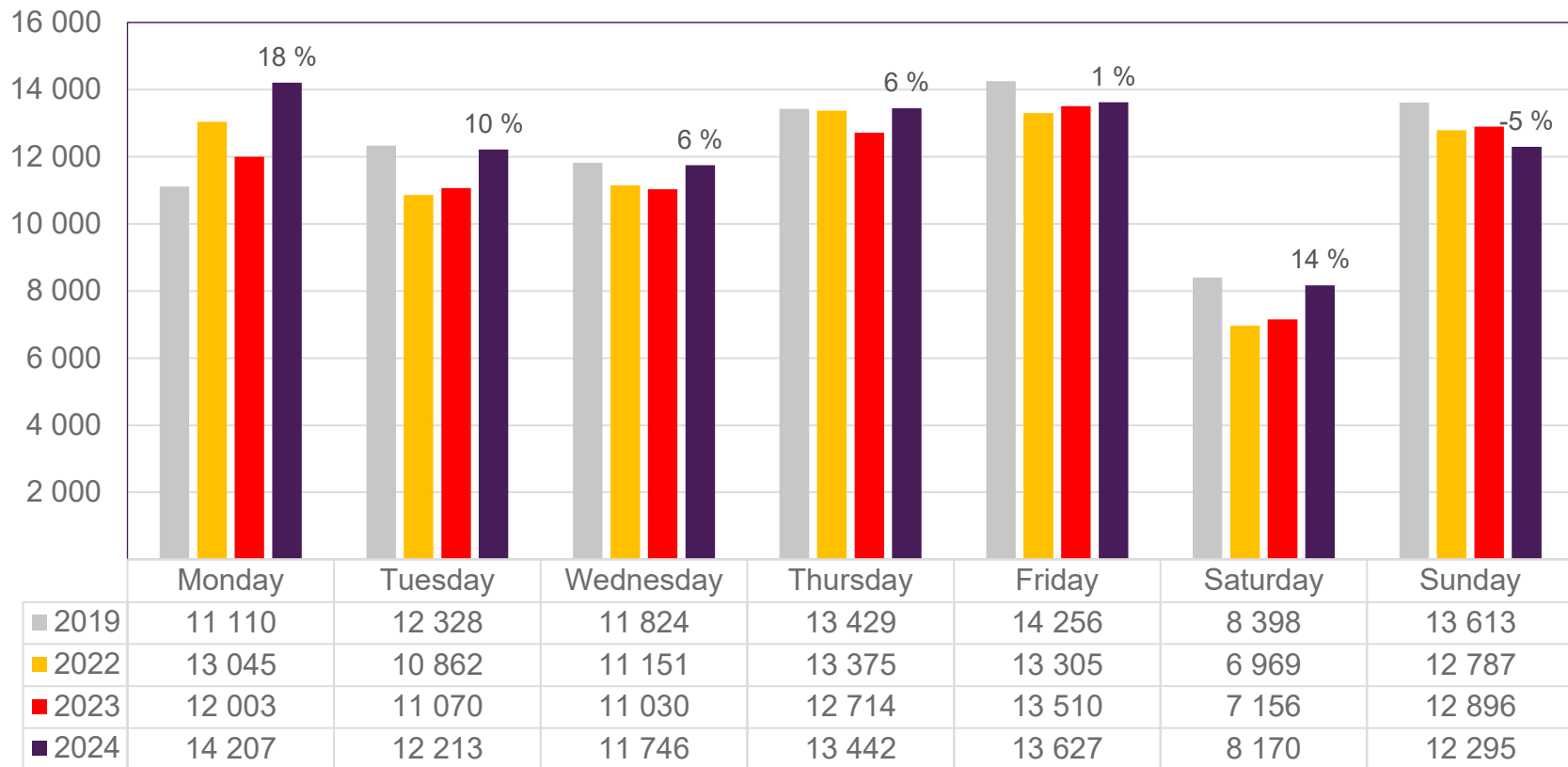


Passengers BGO domestic per week

The change is measured against the same week in 2023



Passengers SVG total per day, week 35

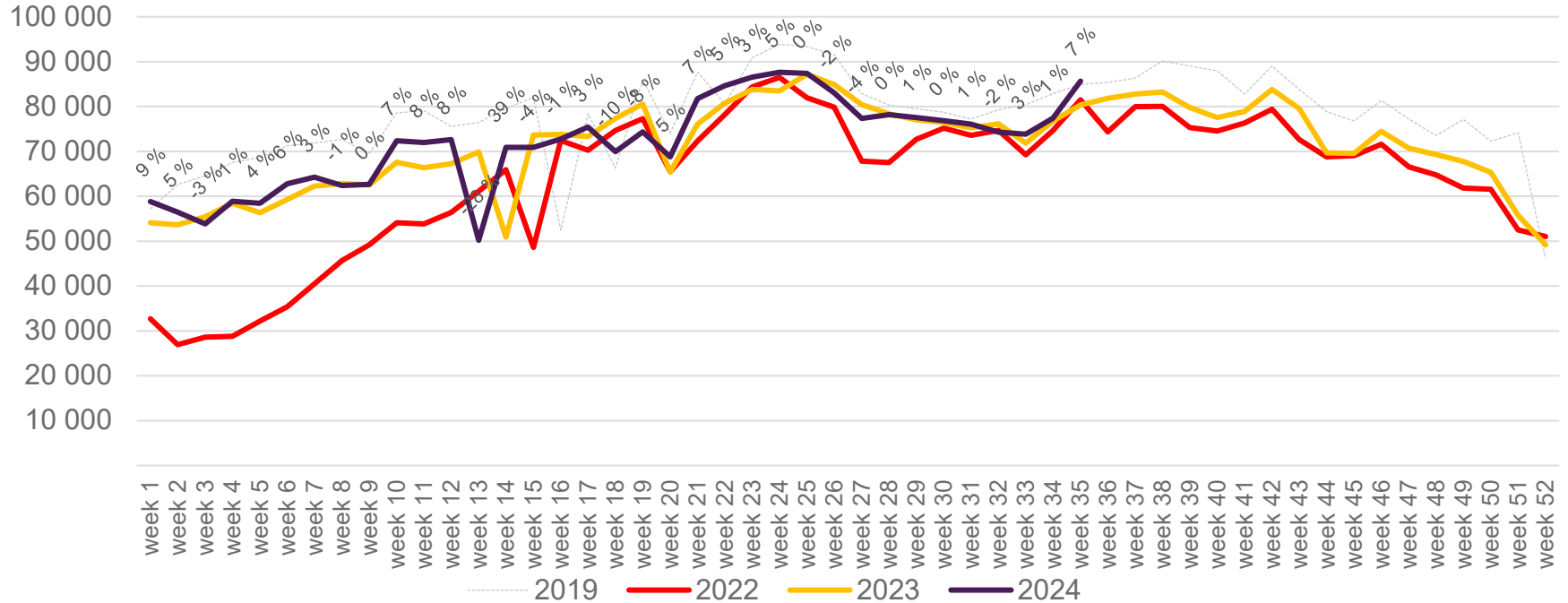


The change is measured against the same week in 2023

Source: SIA, Avinor Statistics

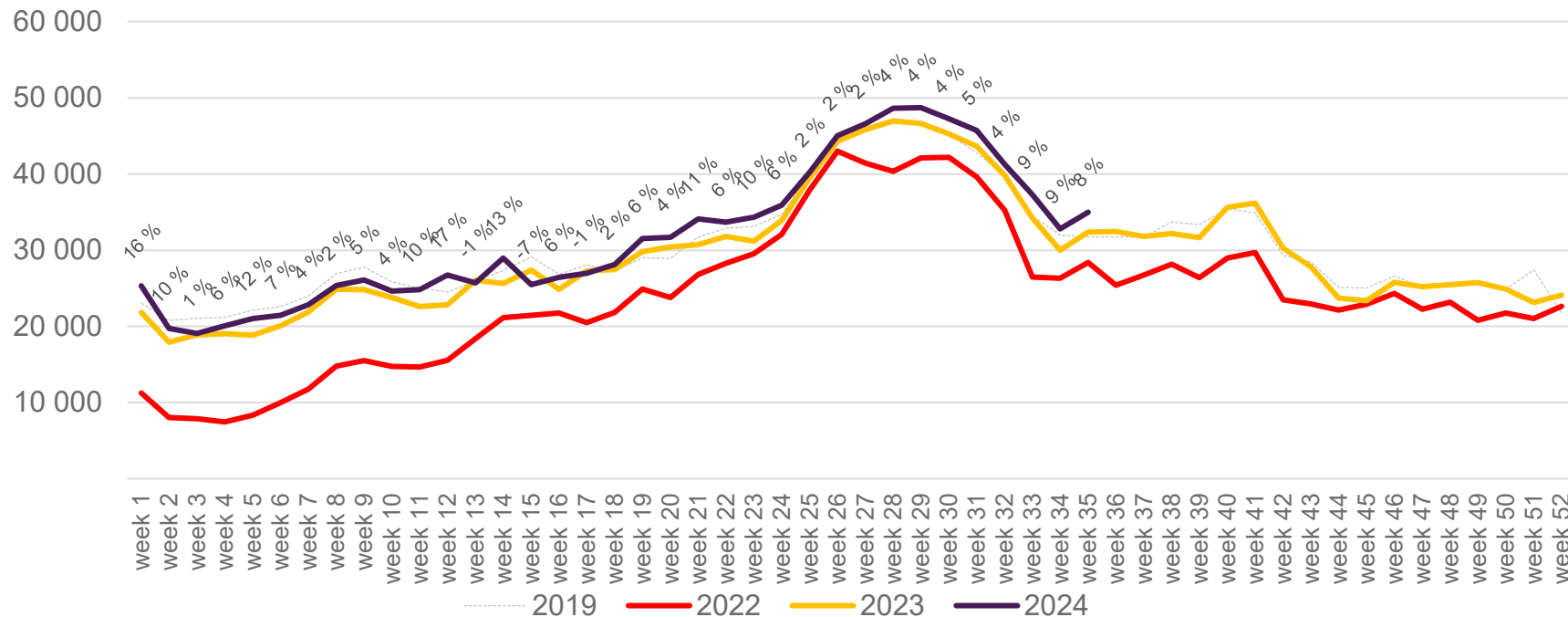
Passengers SVG total per week

The change is measured against the same week in 2023



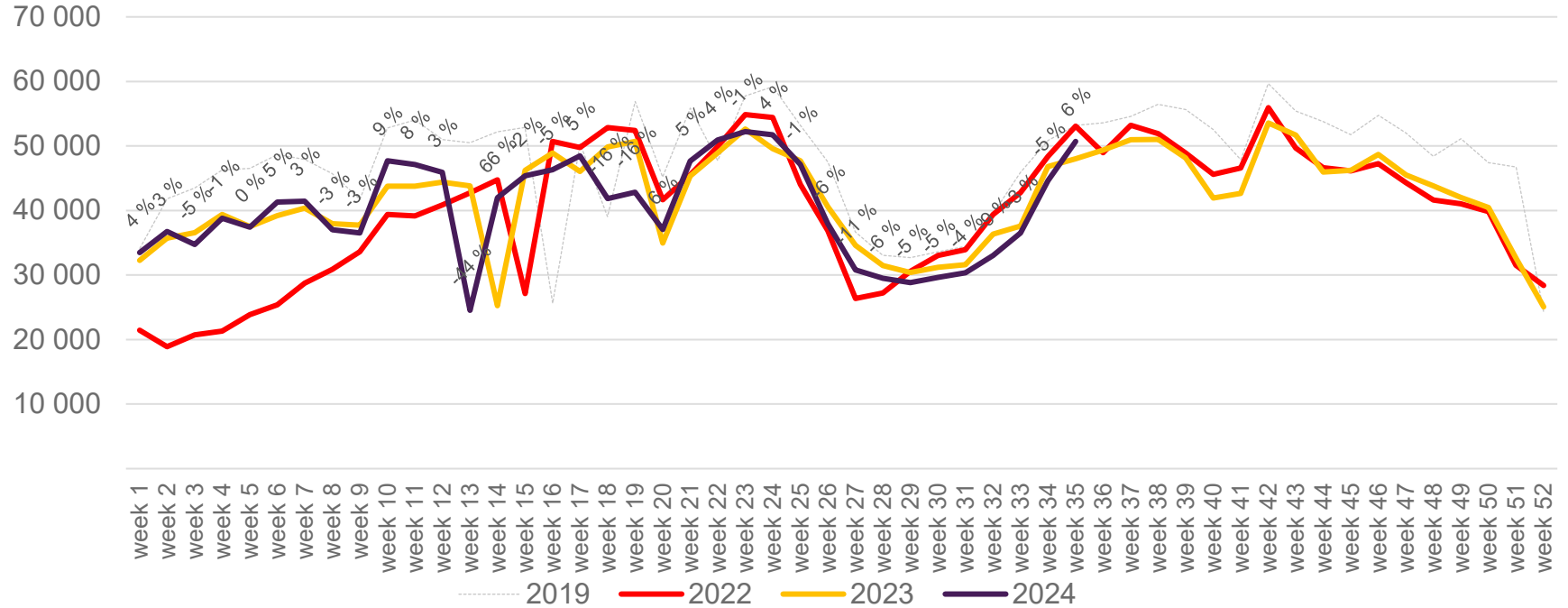
Passengers SVG international per week

The change is measured against the same week in 2023

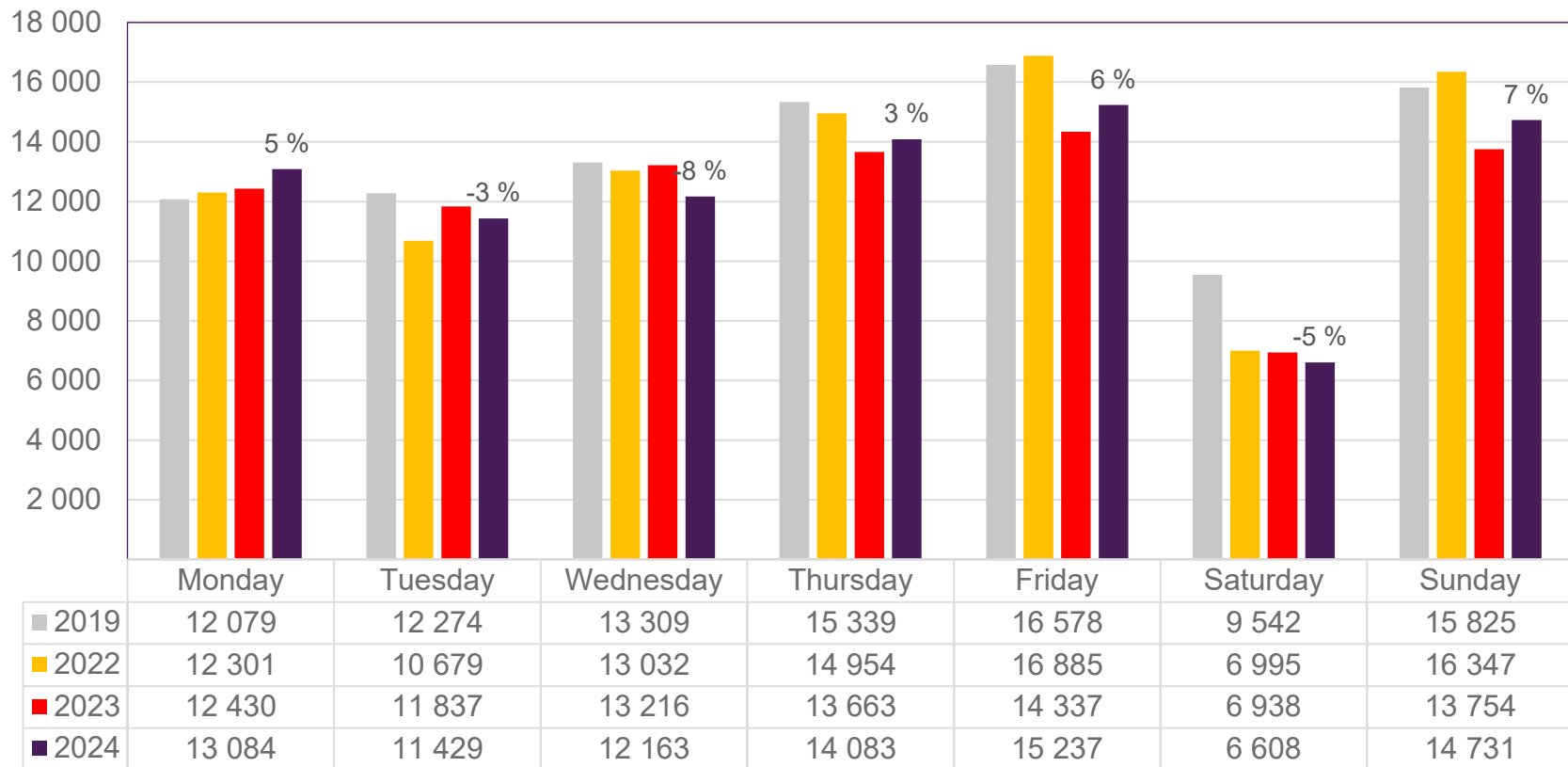


Passengers SVG domestic per week

The change is measured against the same week in 2023



Passengers TRD total per day, week 35

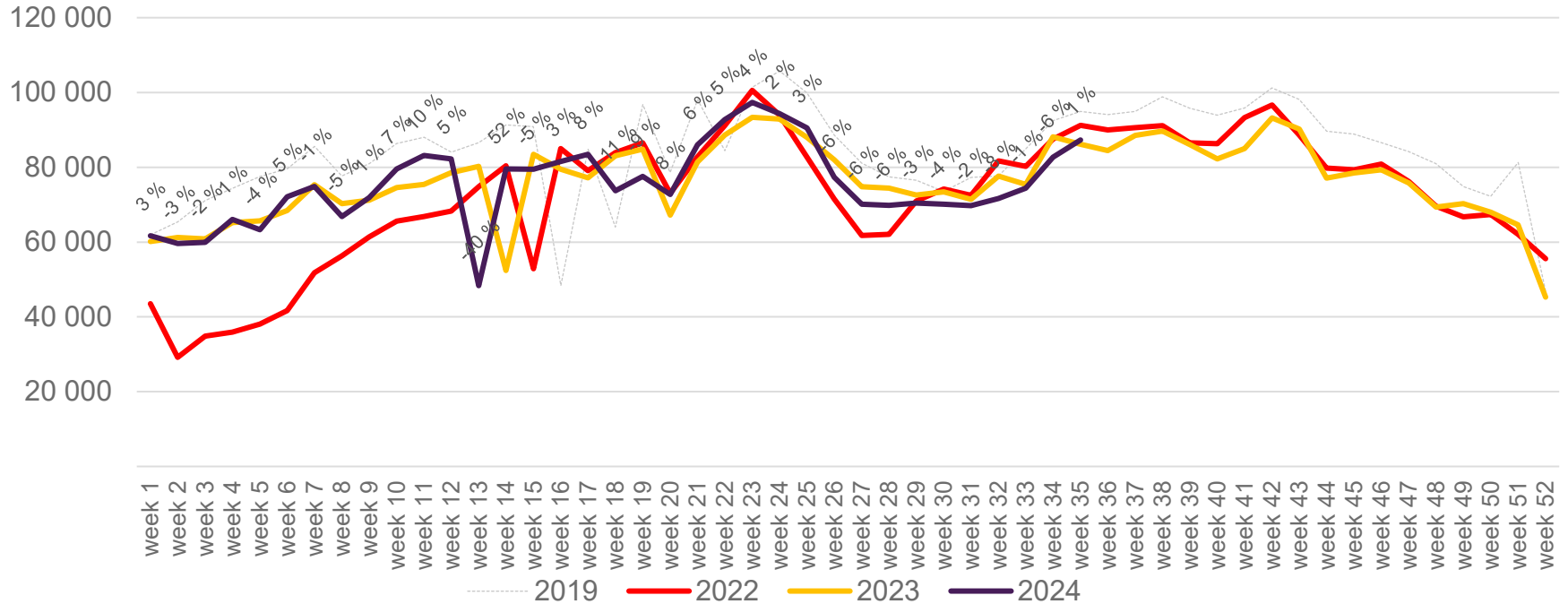


The change is measured against the same week in 2023

Source: SIA, Avinor Statistics

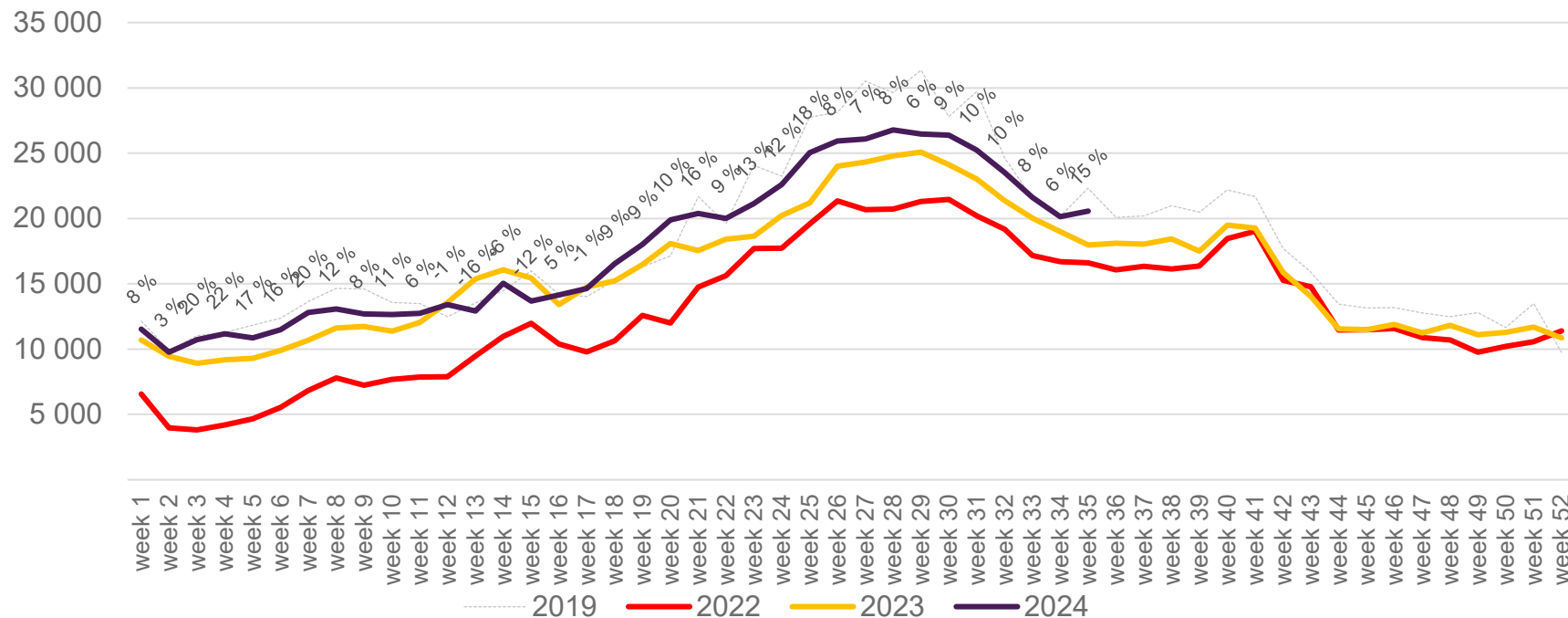
Passengers TRD total per week

The change is measured against the same week in 2023



Passengers TRD international per week

The change is measured against the same week in 2023



Passengers TRD domestic per week

The change is measured against the same week in 2023

