



Passenger numbers per week

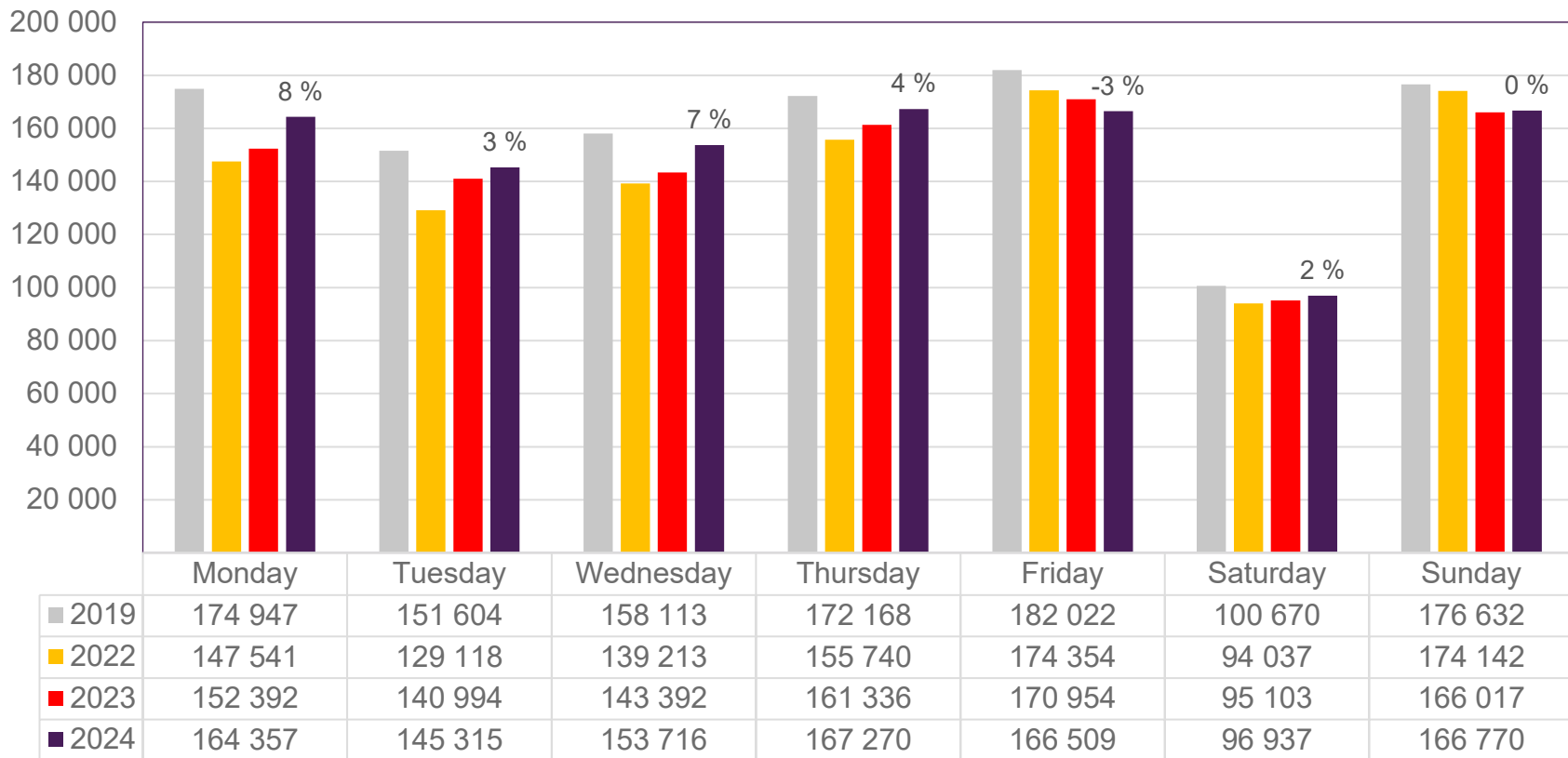
Preliminary figures

- The figures for the previous week are preliminary. It takes some time for all passenger numbers to be reported, so the figures for the previous week may be lower than the final figures.
- The figures are taken from SIA, Avinor's traffic database.

Top 10 airports, total week 34

Airport	2019	2022	2023	2024	2024 vs. 2023	
					Change	Change %
Oslo/Gardermoen	596 120	524 999	538 153	557 640	19 487	4 %
Bergen/Flesland	138 218	134 733	135 835	139 598	3 763	3 %
Trondheim/Værnes	92 523	87 549	88 119	82 678	-5 441	-6 %
Stavanger/Sola	82 882	74 688	76 815	77 230	415	1 %
Tromsø/Langnes	41 730	41 451	41 467	42 662	1 195	3 %
Bodø	38 063	35 231	34 820	39 600	4 780	14 %
Ålesund/Vigra	23 844	21 189	21 678	21 557	-121	-1 %
Harstad/Narvik/Evenes	15 793	17 078	16 643	19 133	2 490	15 %
Kristiansand/Kjevik	20 968	16 999	16 026	15 464	-562	-4 %
Bardufoss	4 676	3 107	3 524	3 582	58	2 %

Passengers Avinor total per day, week 34

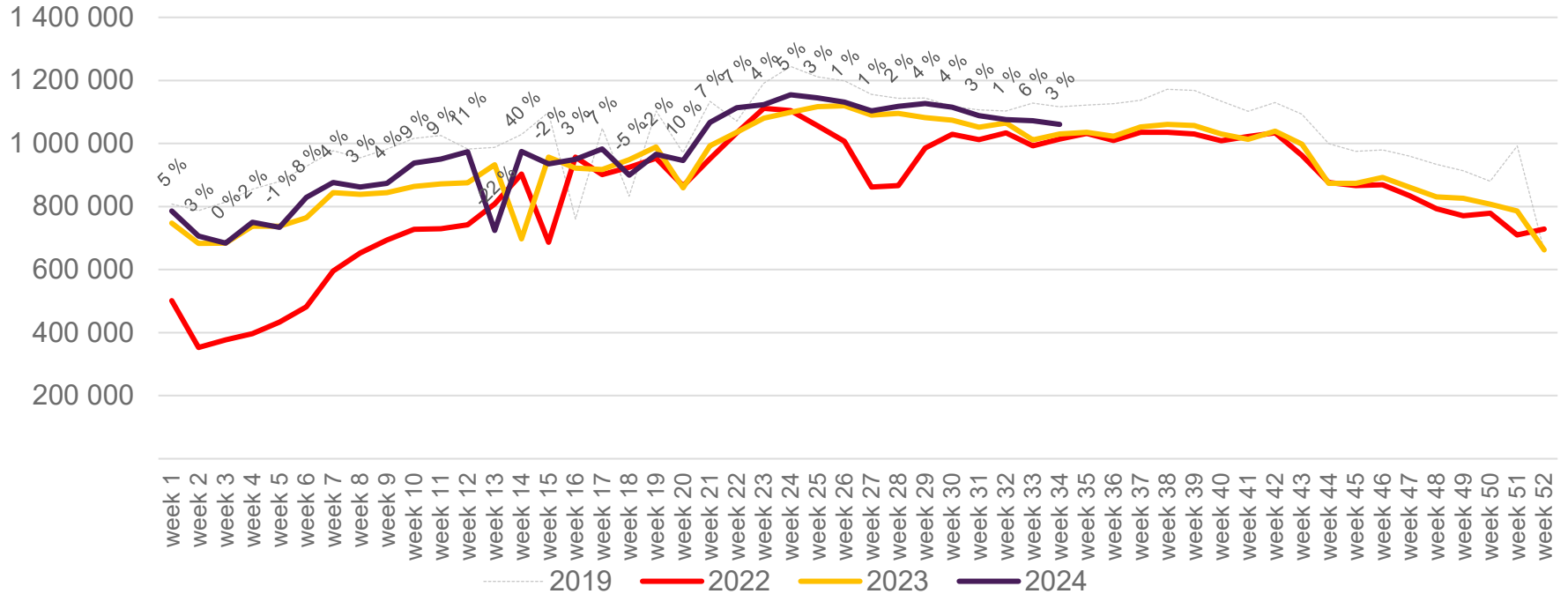


The change is measured against the same week in 2023

Source: SIA, Avinor Statistics

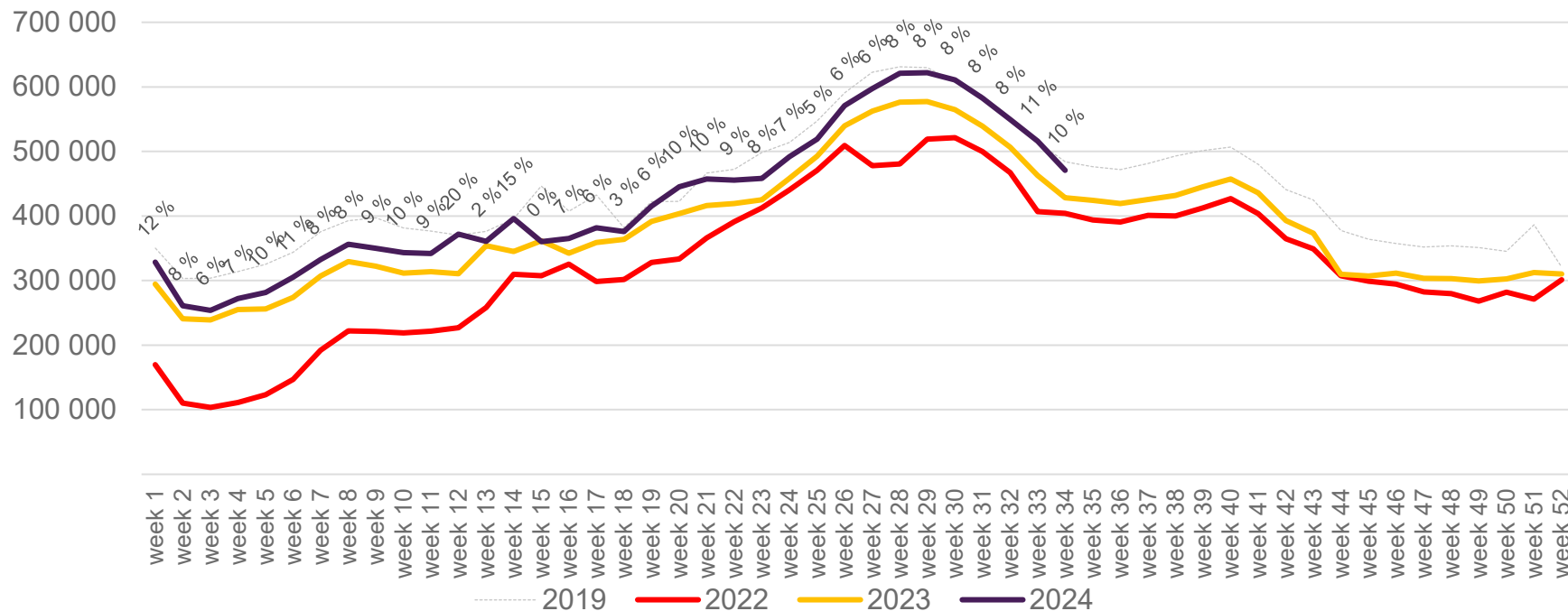
Passengers Avinor total per week

The change is measured against the same week in 2023



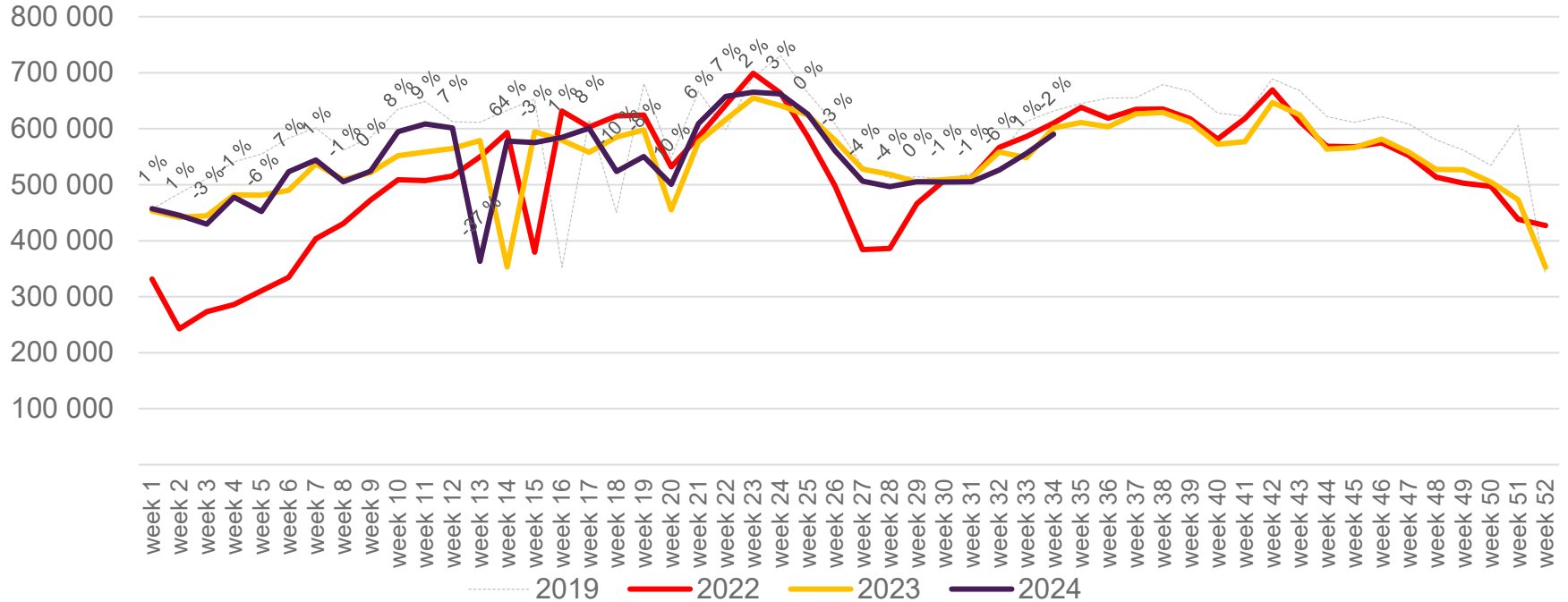
Passengers Avinor international per week

The change is measured against the same week in 2023

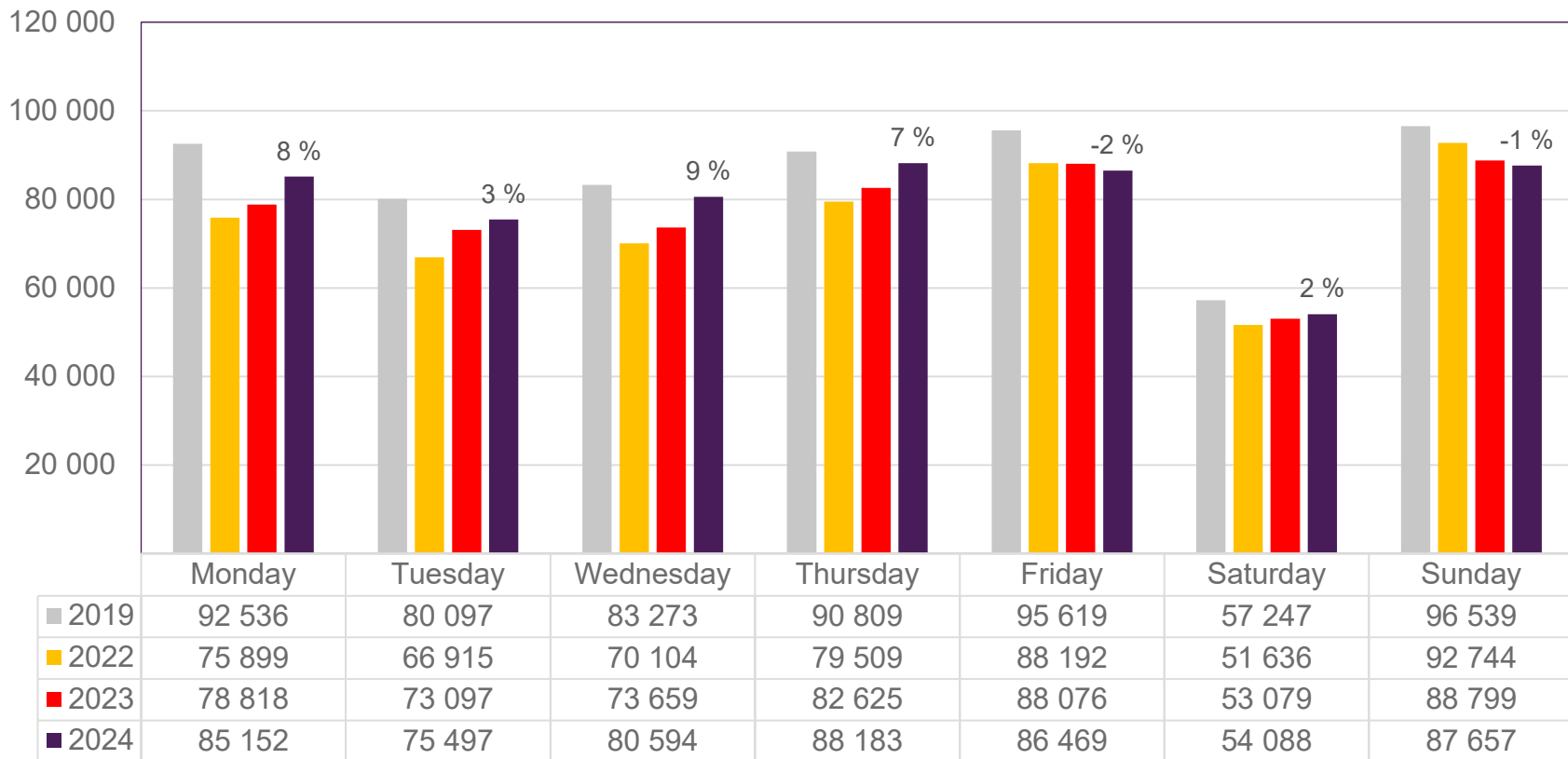


Passengers Avinor domestic per week

The change is measured against the same week in 2023



Passengers OSL total per day, week 34

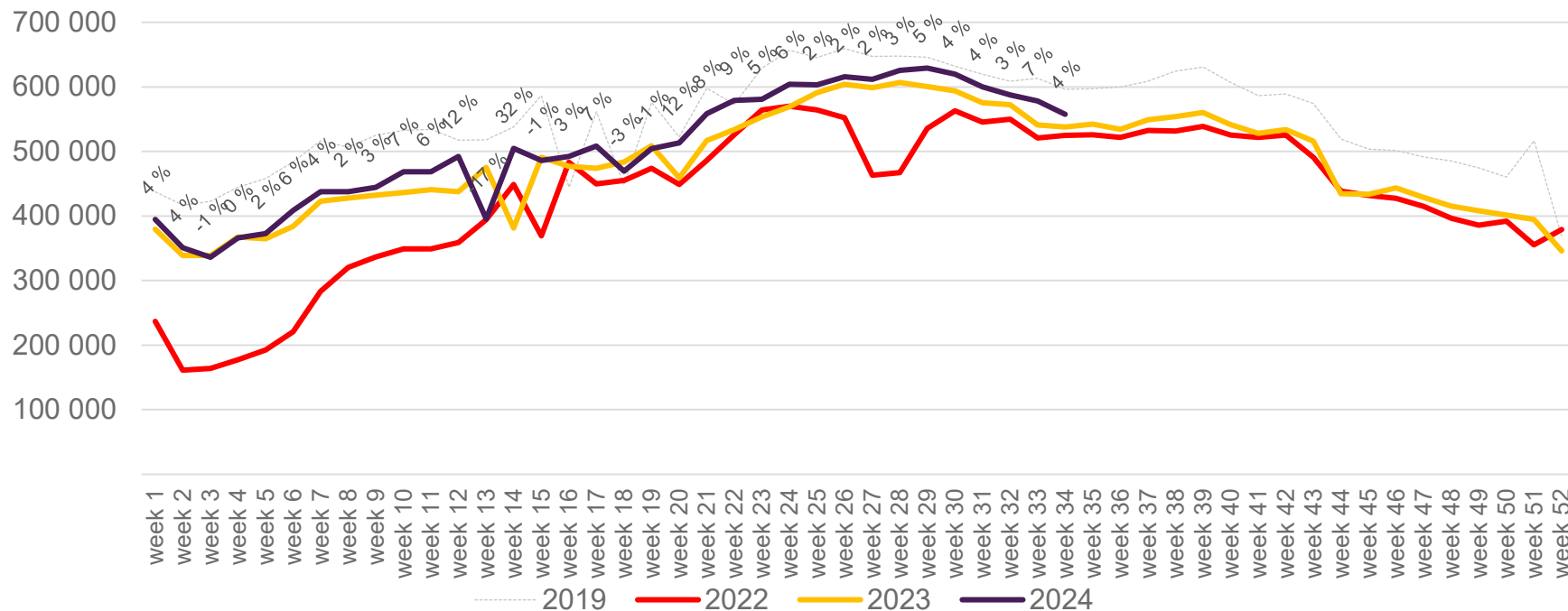


The change is measured against the same week in 2023

Source: SIA, Avinor Statistics

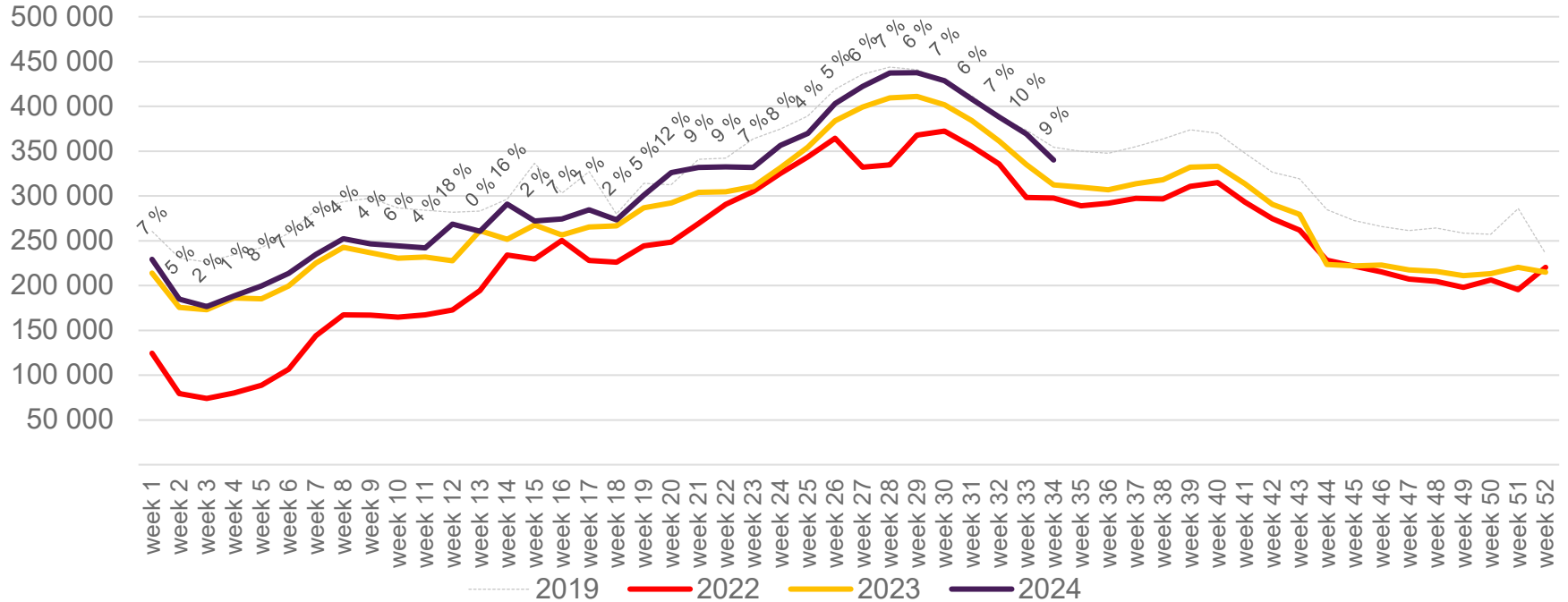
Passengers OSL total per week

The change is measured against the same week in 2023



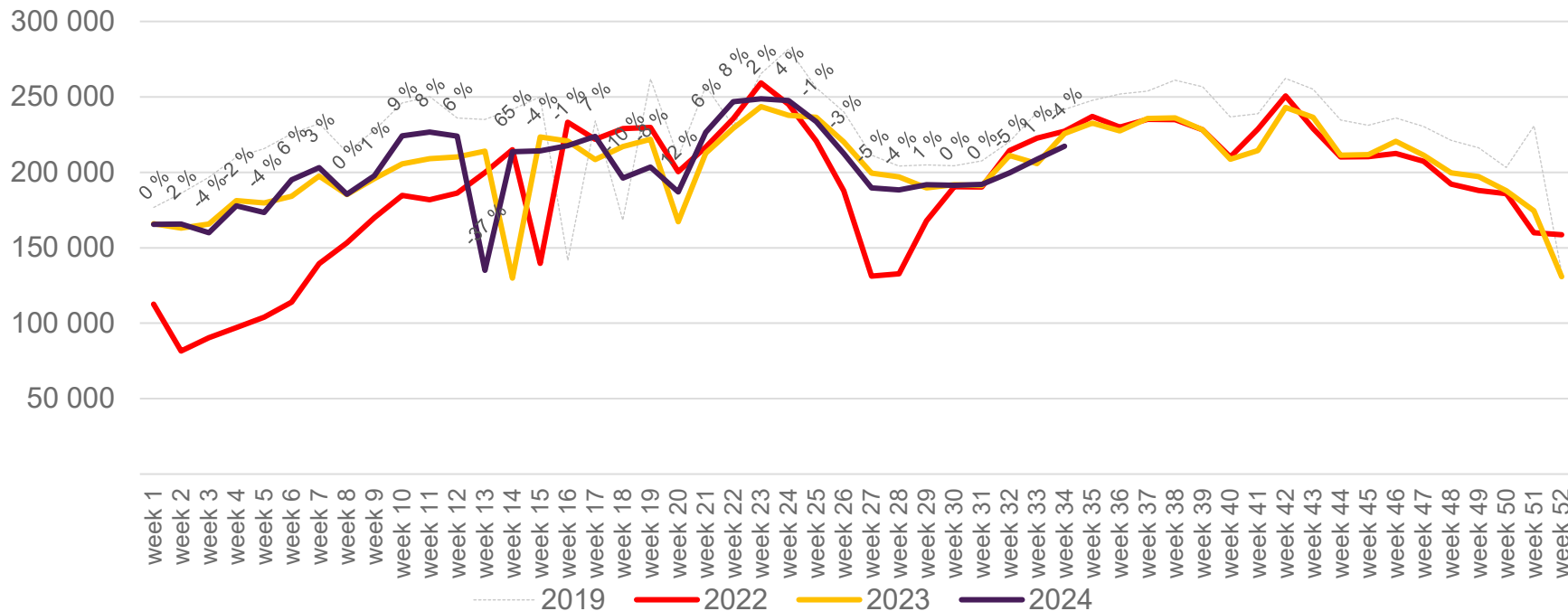
Passengers OSL international per week

The change is measured against the same week in 2023

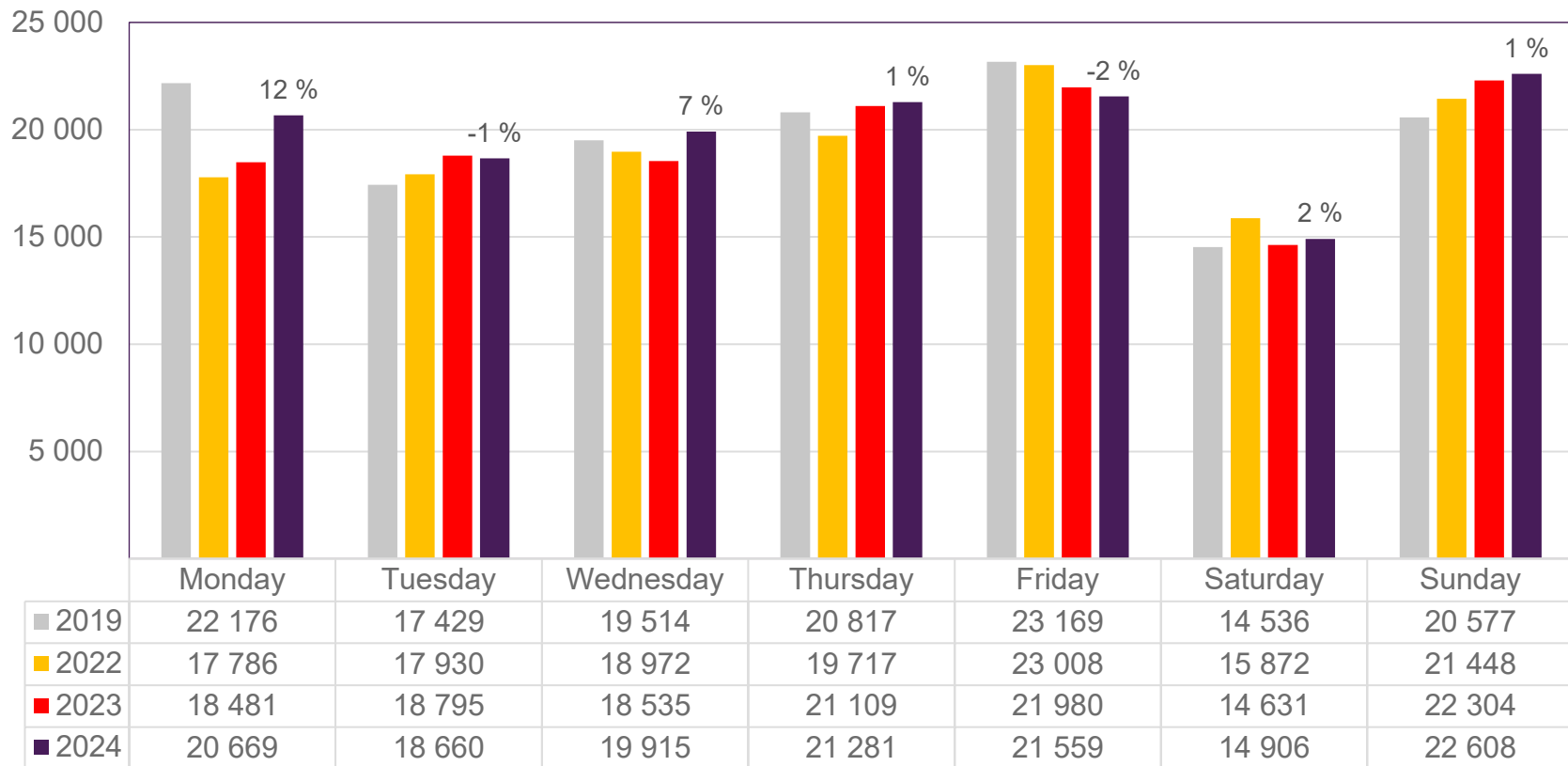


Passengers OSL domestic per week

The change is measured against the same week in 2023



Passengers BGO total per day, week 34

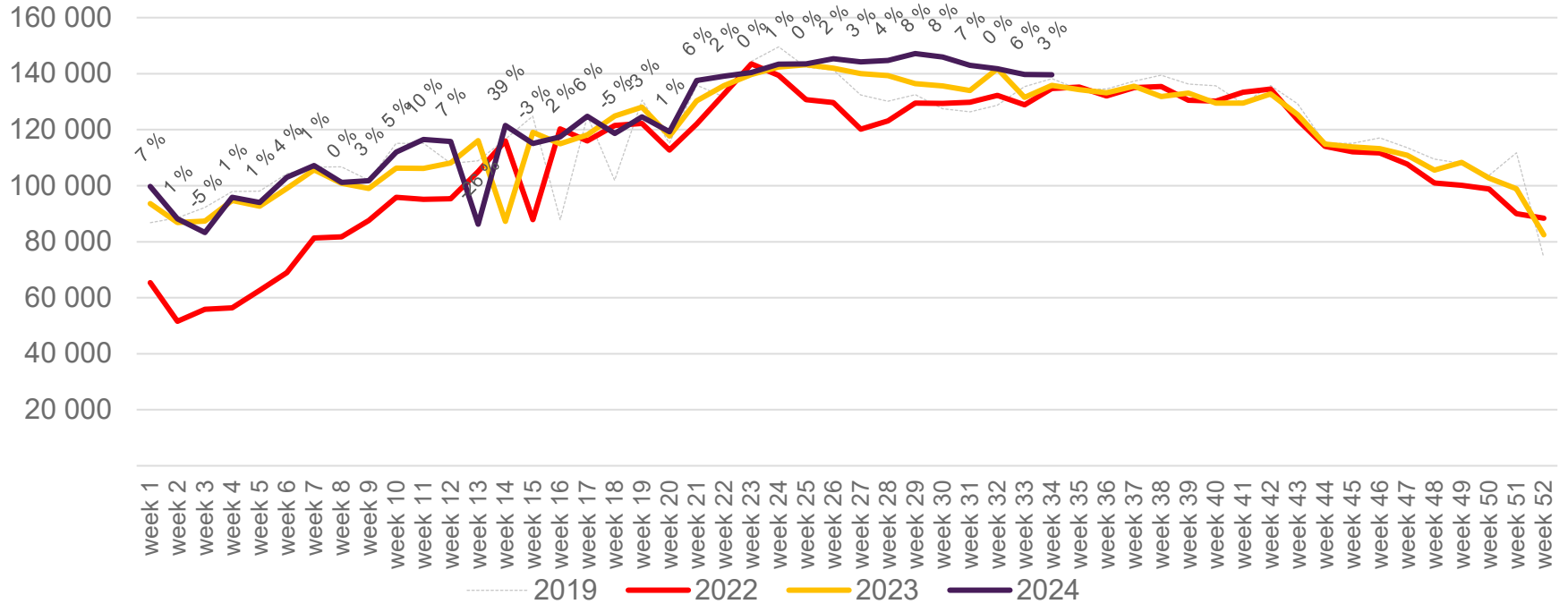


The change is measured against the same week in 2023

Source: SIA, Avinor Statistics

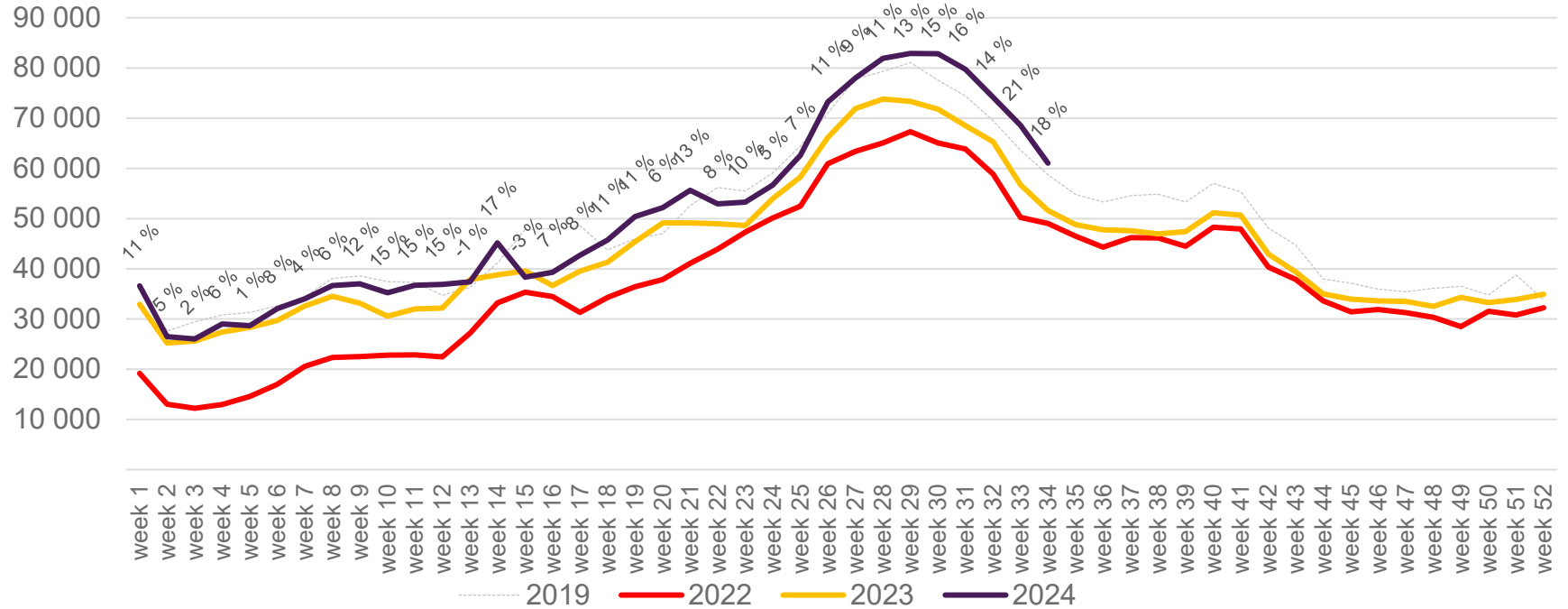
Passengers BGO total per week

The change is measured against the same week in 2023



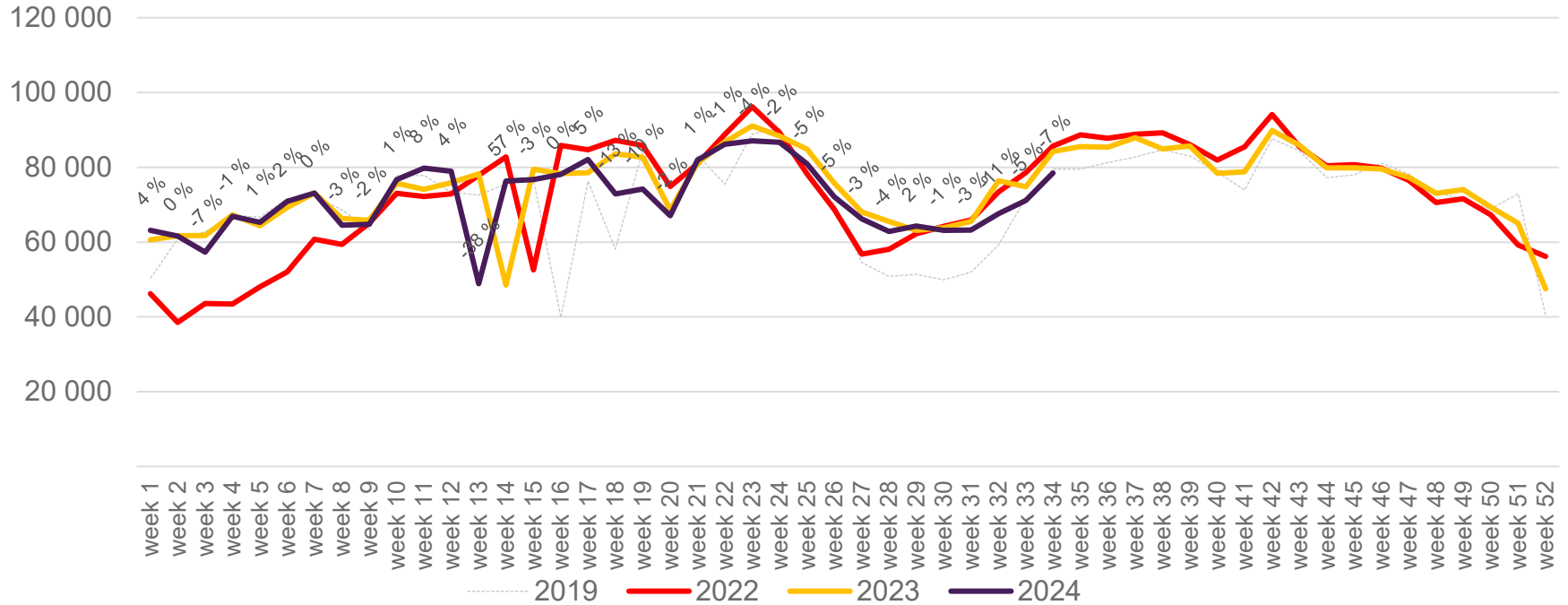
Passengers BGO international per week

The change is measured against the same week in 2023

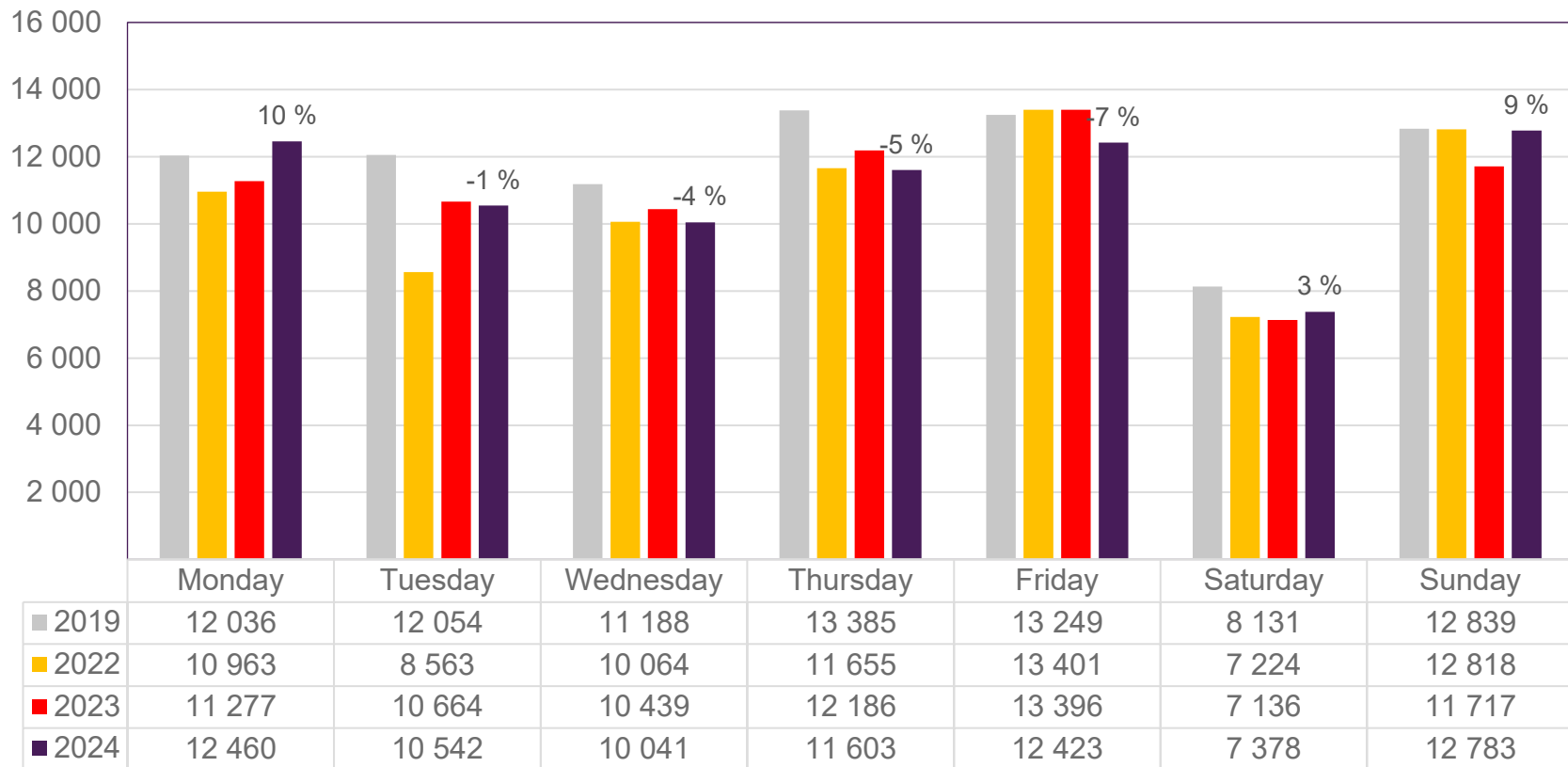


Passengers BGO domestic per week

The change is measured against the same week in 2023



Passengers SVG total per day, week 34

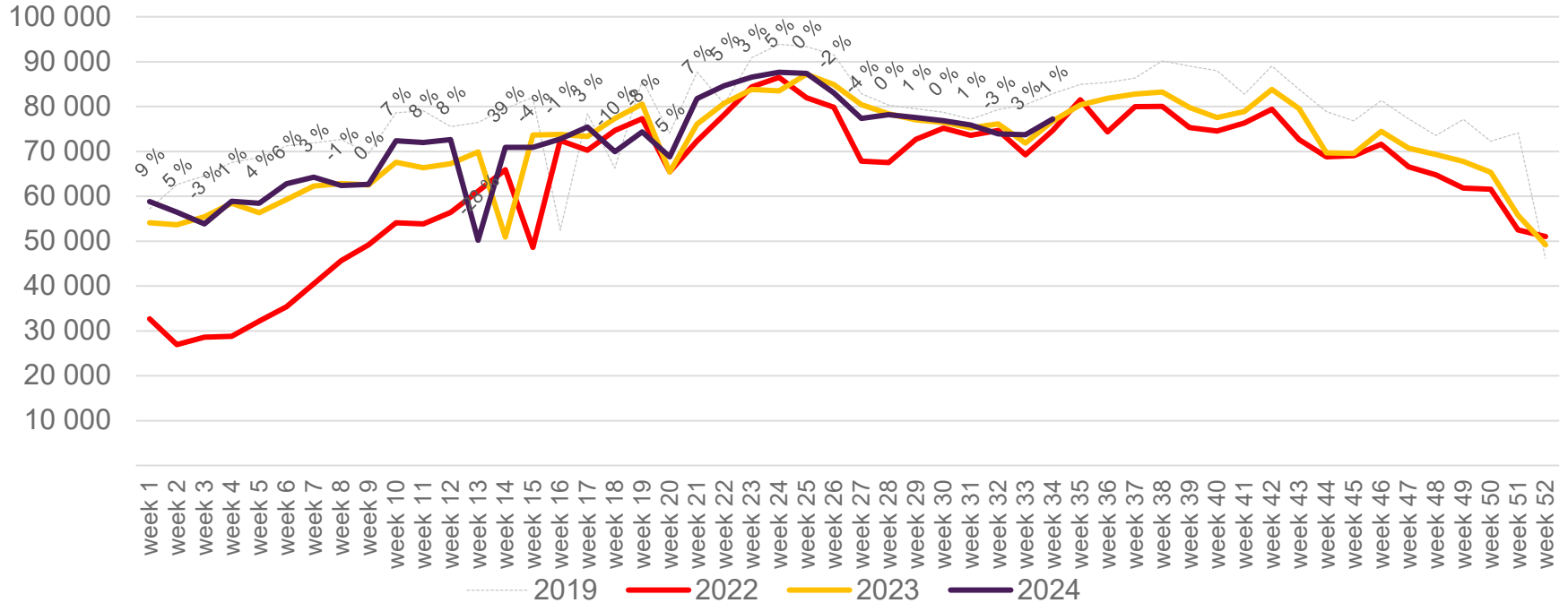


The change is measured against the same week in 2023

Source: SIA, Avinor Statistics

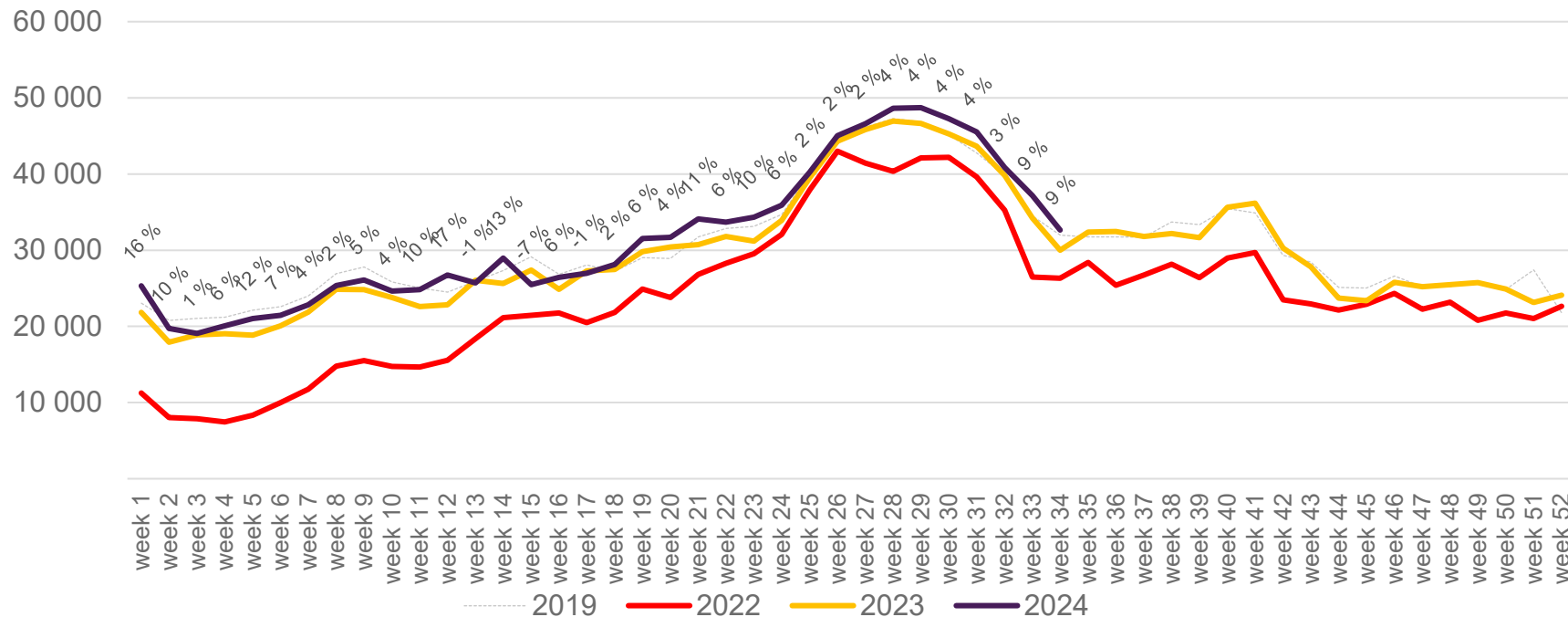
Passengers SVG total per week

The change is measured against the same week in 2023



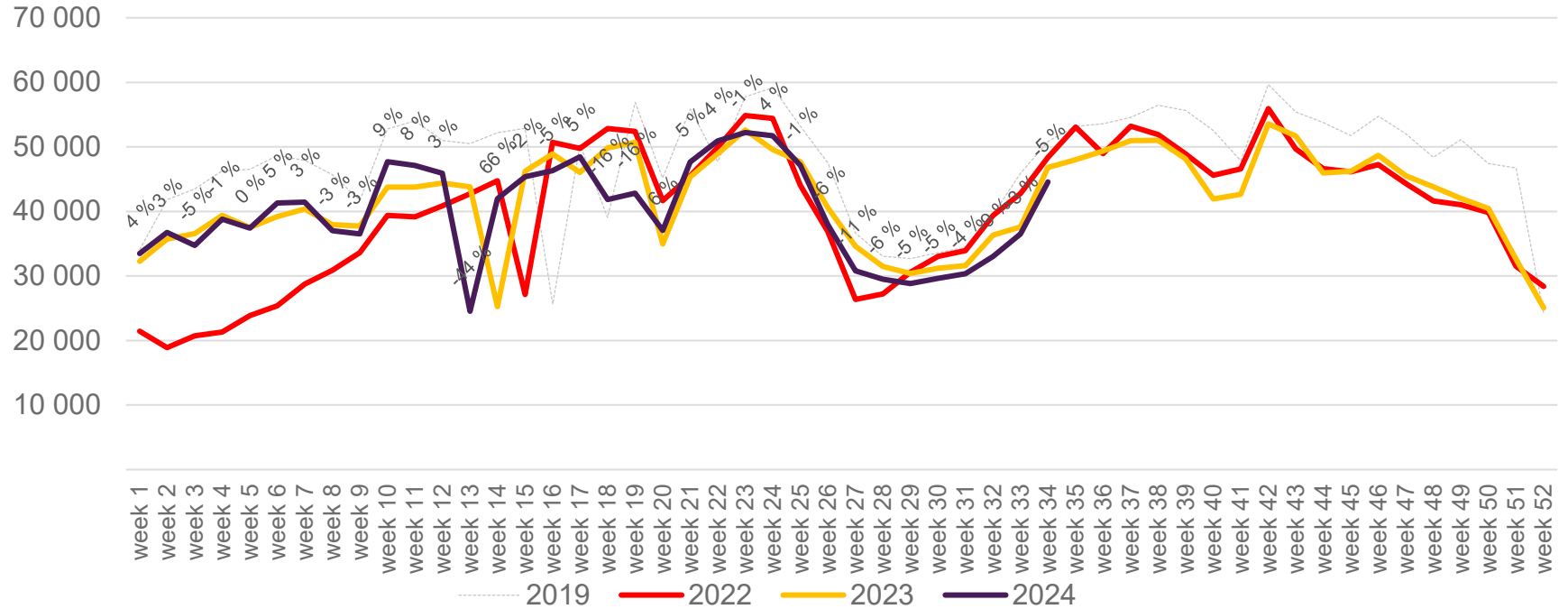
Passengers SVG international per week

The change is measured against the same week in 2023

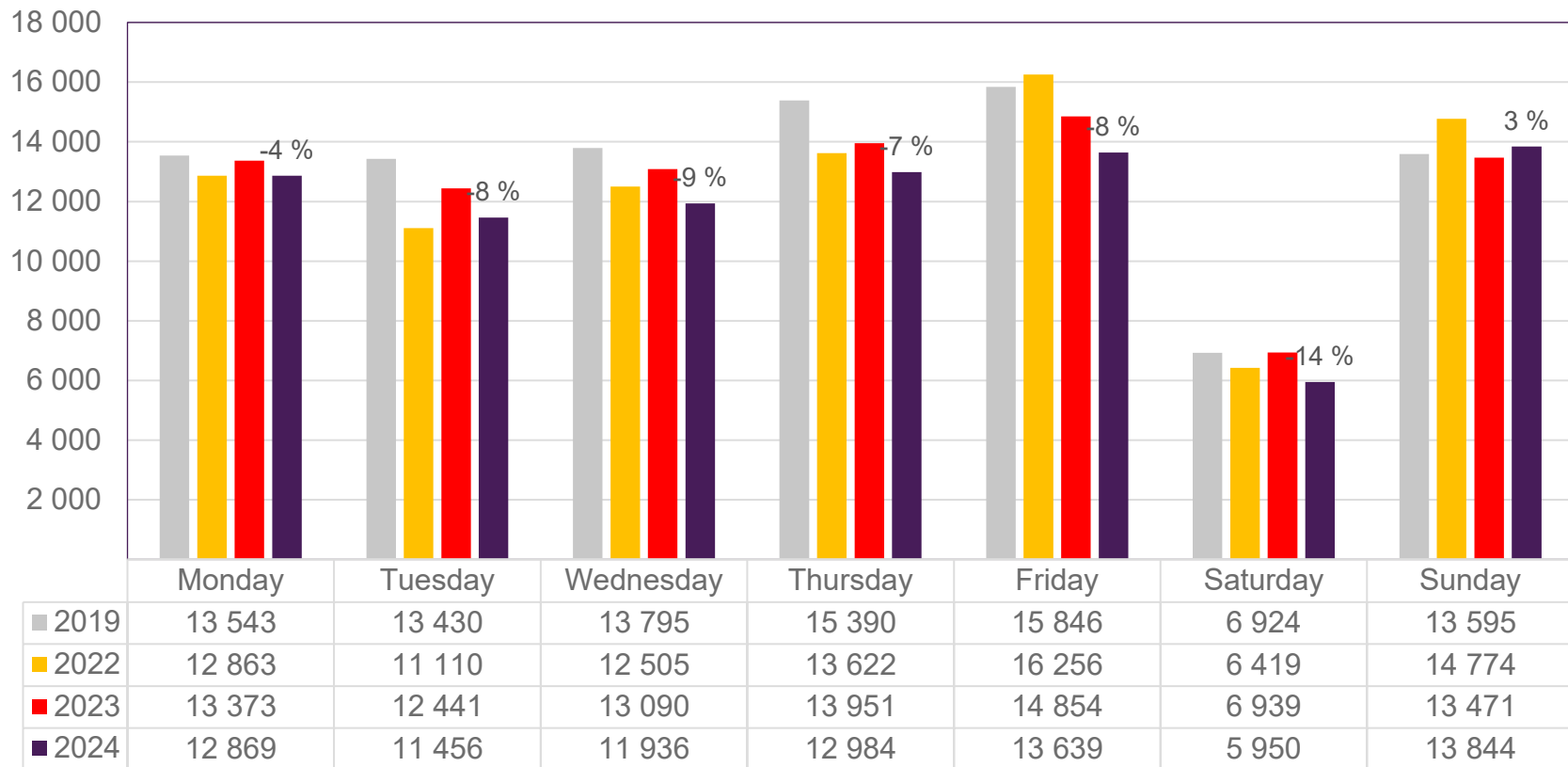


Passengers SVG domestic per week

The change is measured against the same week in 2023



Passengers TRD total per day, week 34

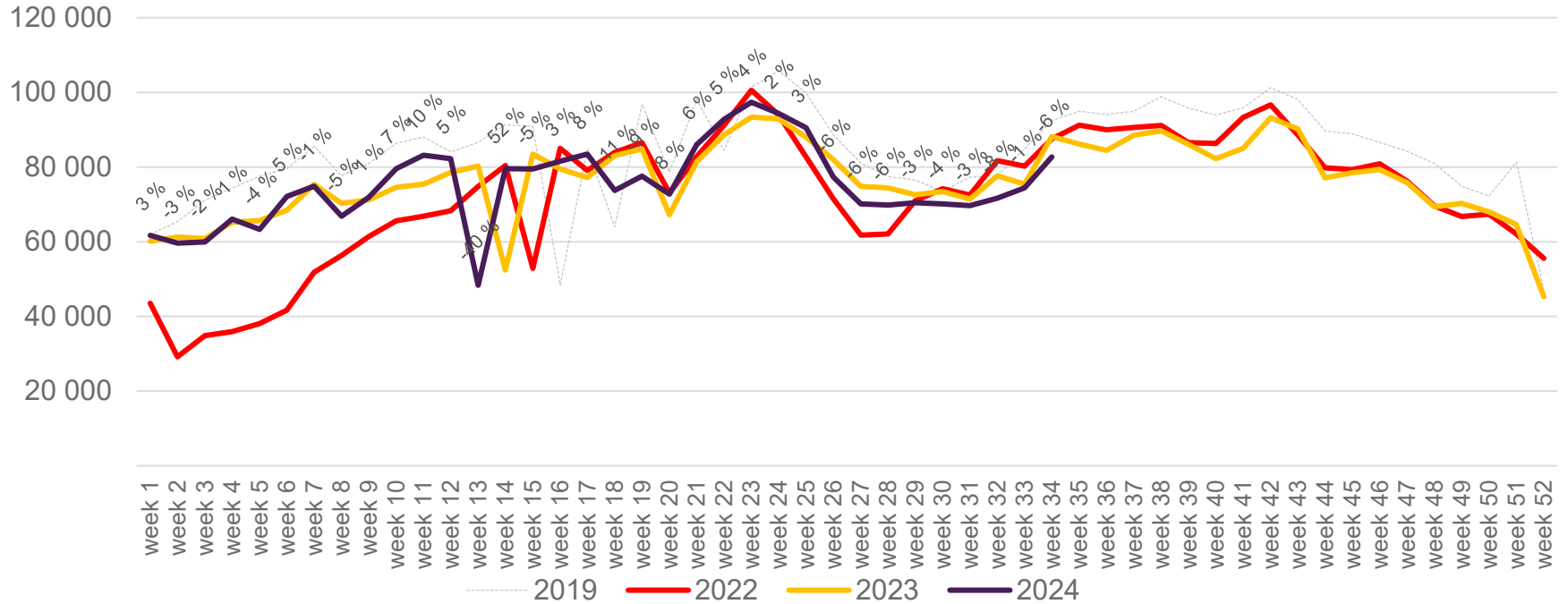


The change is measured against the same week in 2023

Source: SIA, Avinor Statistics

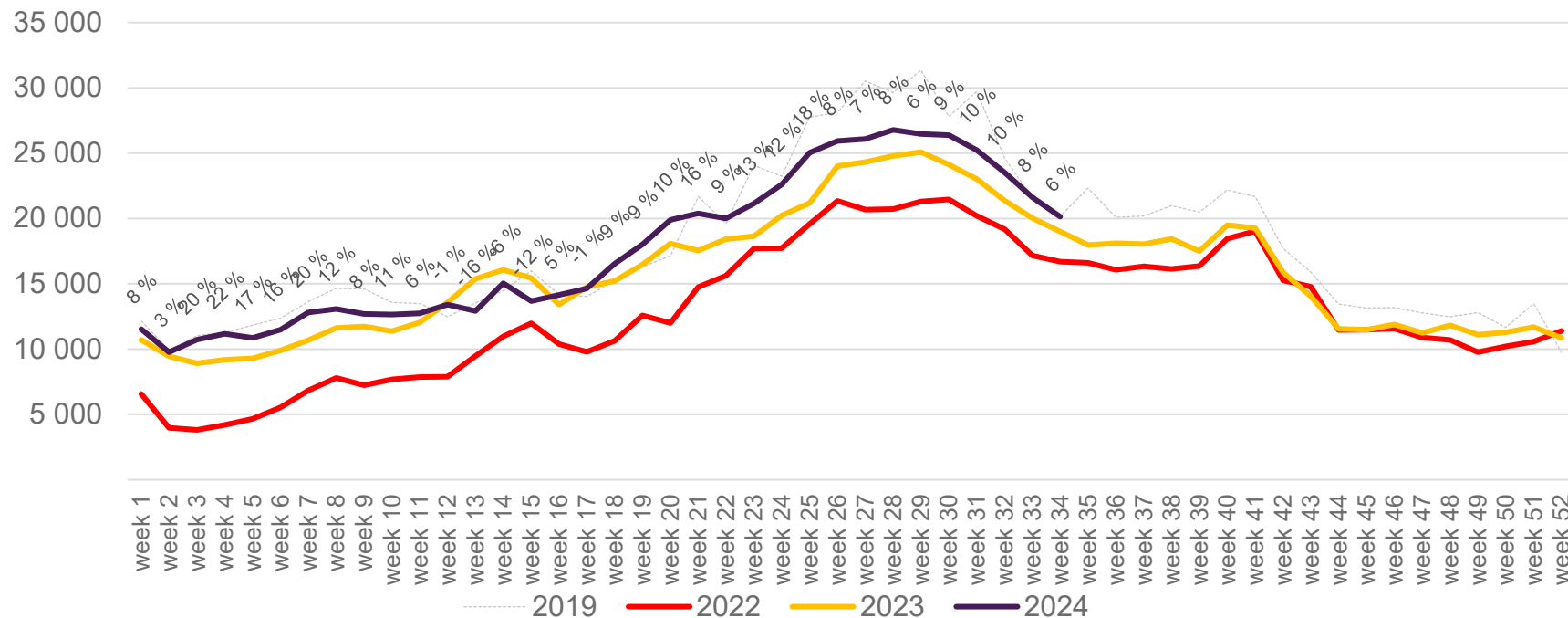
Passengers TRD total per week

The change is measured against the same week in 2023



Passengers TRD international per week

The change is measured against the same week in 2023



Passengers TRD domestic per week

The change is measured against the same week in 2023

