



Passenger numbers per week

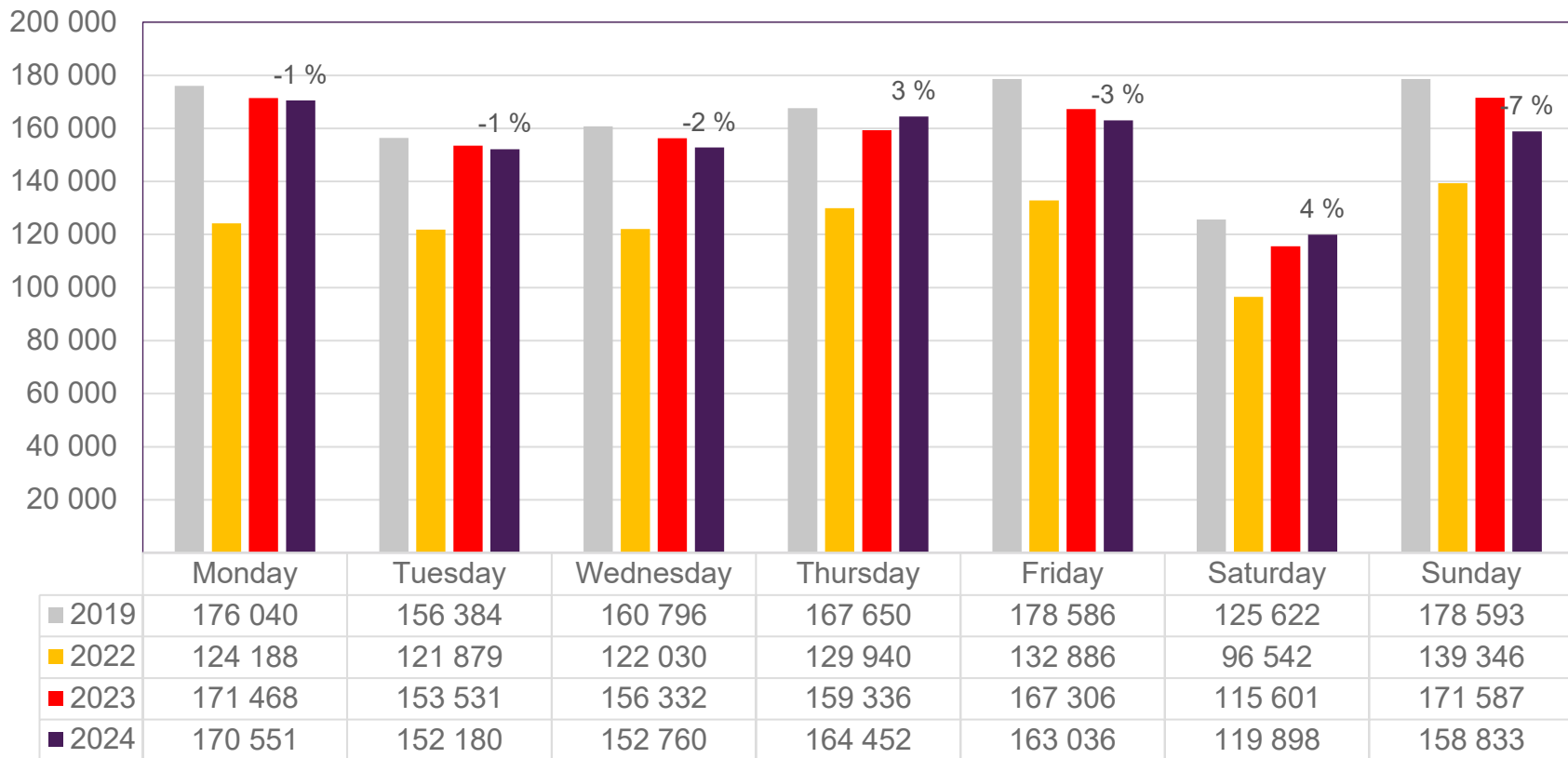
## Preliminary figures

- The figures for the previous week are preliminary. It takes some time for all passenger numbers to be reported, so the figures for the previous week may be 1-2% lower than the final figures.
- The figures are taken from SIA, Avinor's traffic database.

# Top 10 airports, total week 28

Airport	2019	2022	2023	2024	2024 vs. 2023	
					Change	Change %
Oslo/Gardermoen	647 984	467 395	606 665	609 237	2 572	0 %
Bergen/Flesland	130 160	123 158	139 340	138 104	-1 236	-1 %
Stavanger/Sola	80 336	67 549	78 409	74 707	-3 702	-5 %
Trondheim/Værnes	77 462	62 048	74 435	67 841	-6 594	-9 %
Tromsø/Langnes	41 765	29 143	39 527	40 358	831	2 %
Bodø	36 901	26 546	36 205	36 957	752	2 %
Harstad/Narvik/Evenes	20 731	19 321	20 485	21 049	564	3 %
Ålesund/Vigra	21 719	16 829	23 078	19 353	-3 725	-16 %
Kristiansand/Kjevik	20 147	11 864	15 034	13 806	-1 228	-8 %
Bardufoss	5 622		3 859	4 114	255	7 %

# Passengers Avinor total per day, week 28

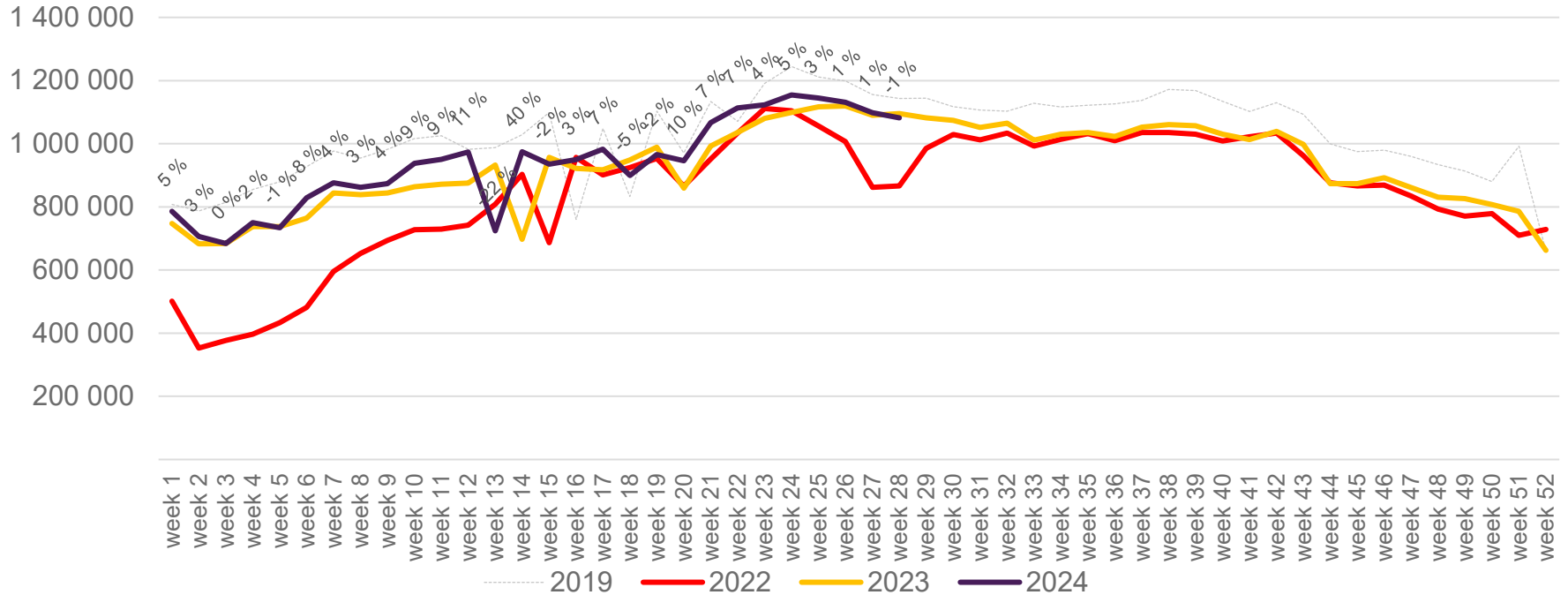


The change is measured against the same week in 2023

Source: SIA, Avinor Statistics

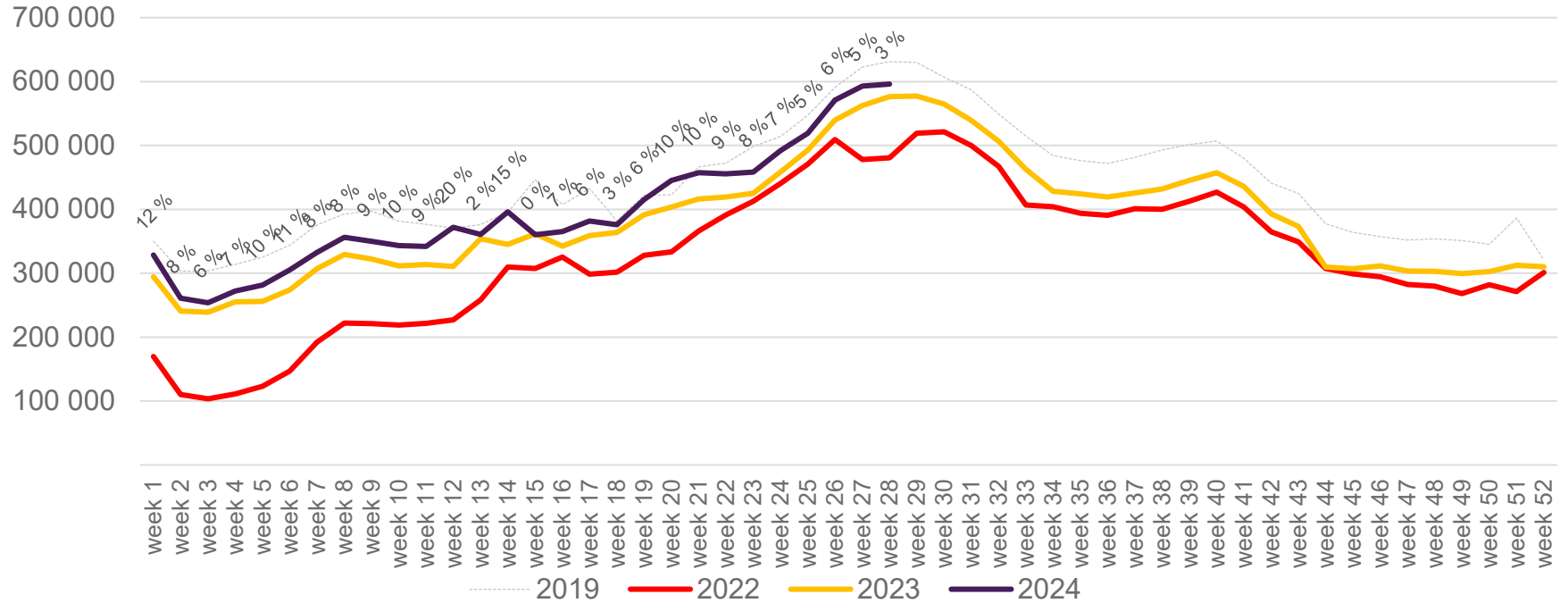
# Passengers Avinor total per week

The change is measured against the same week in 2023



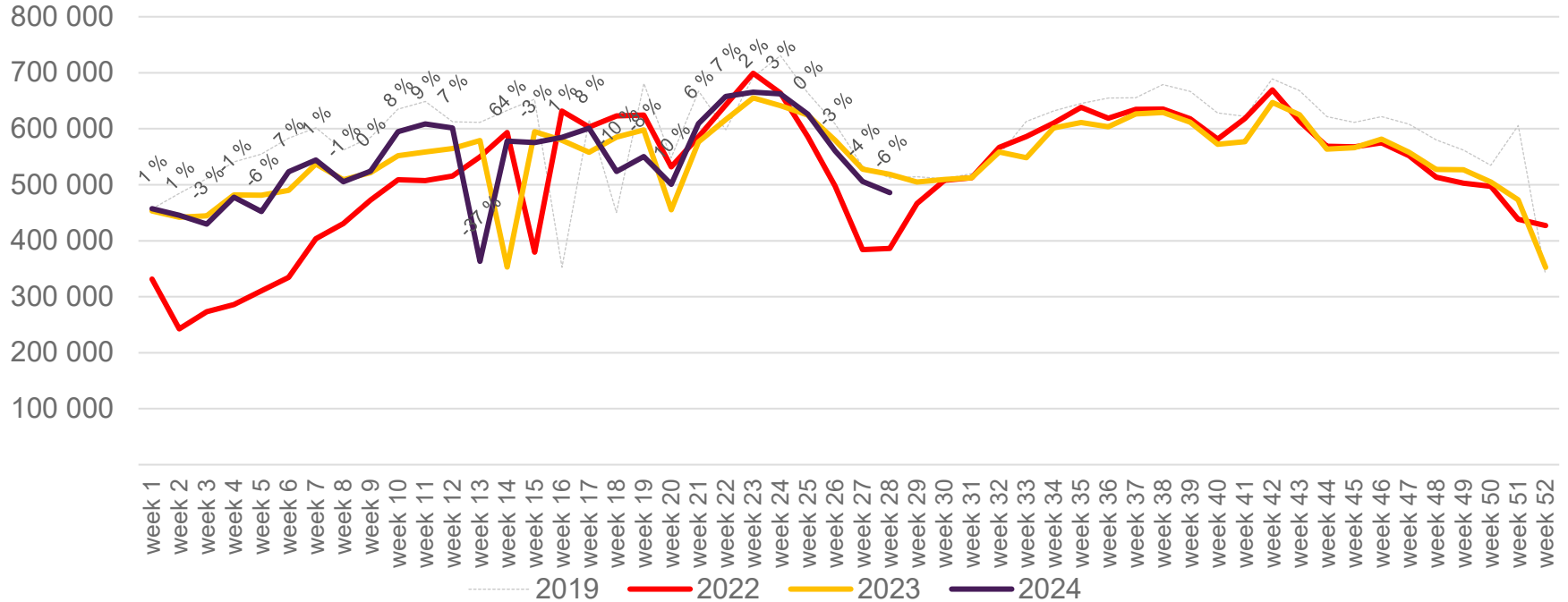
# Passengers Avinor international per week

The change is measured against the same week in 2023

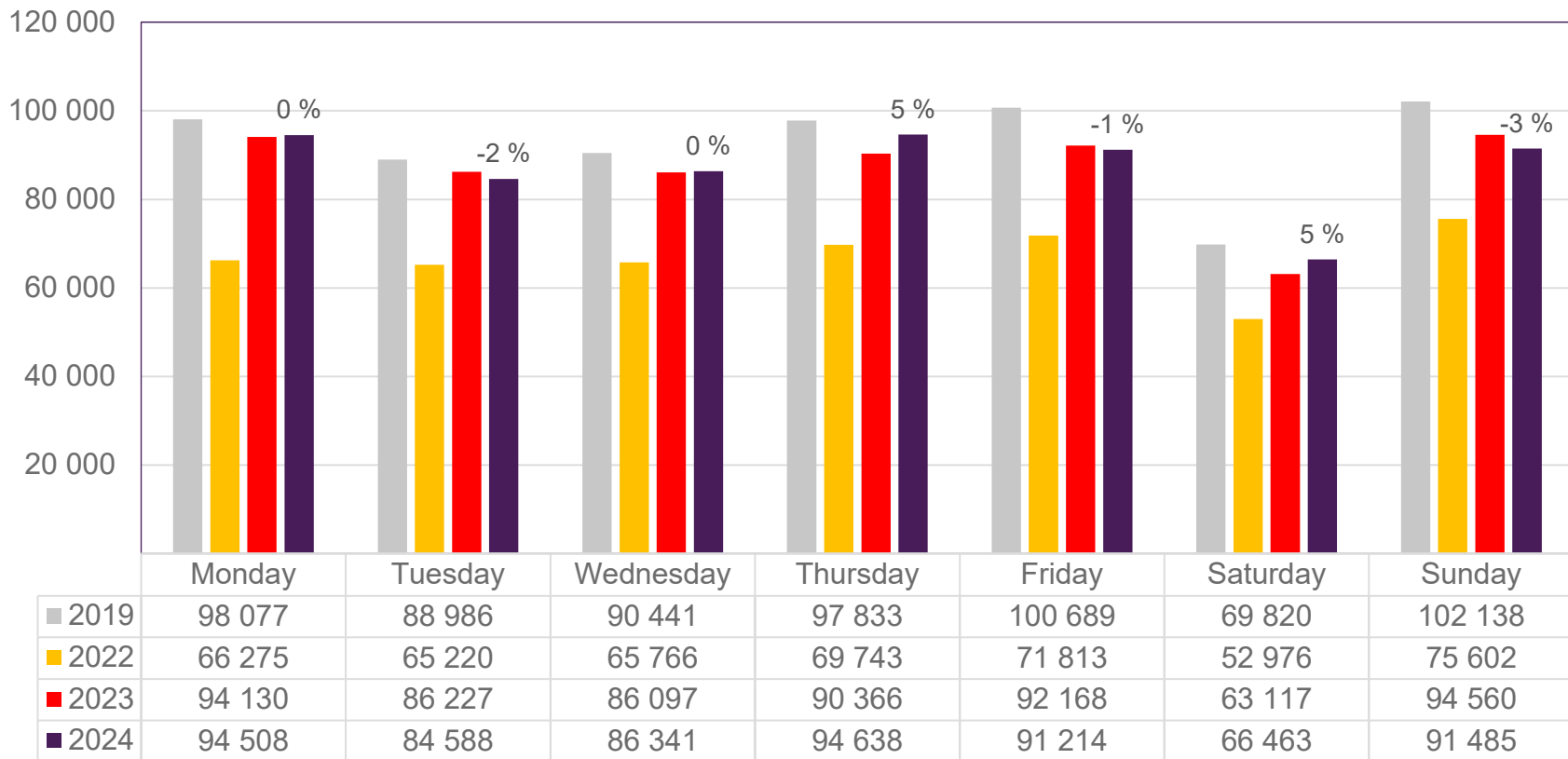


# Passengers Avinor domestic per week

The change is measured against the same week in 2023



# Passengers OSL total per day, week 28



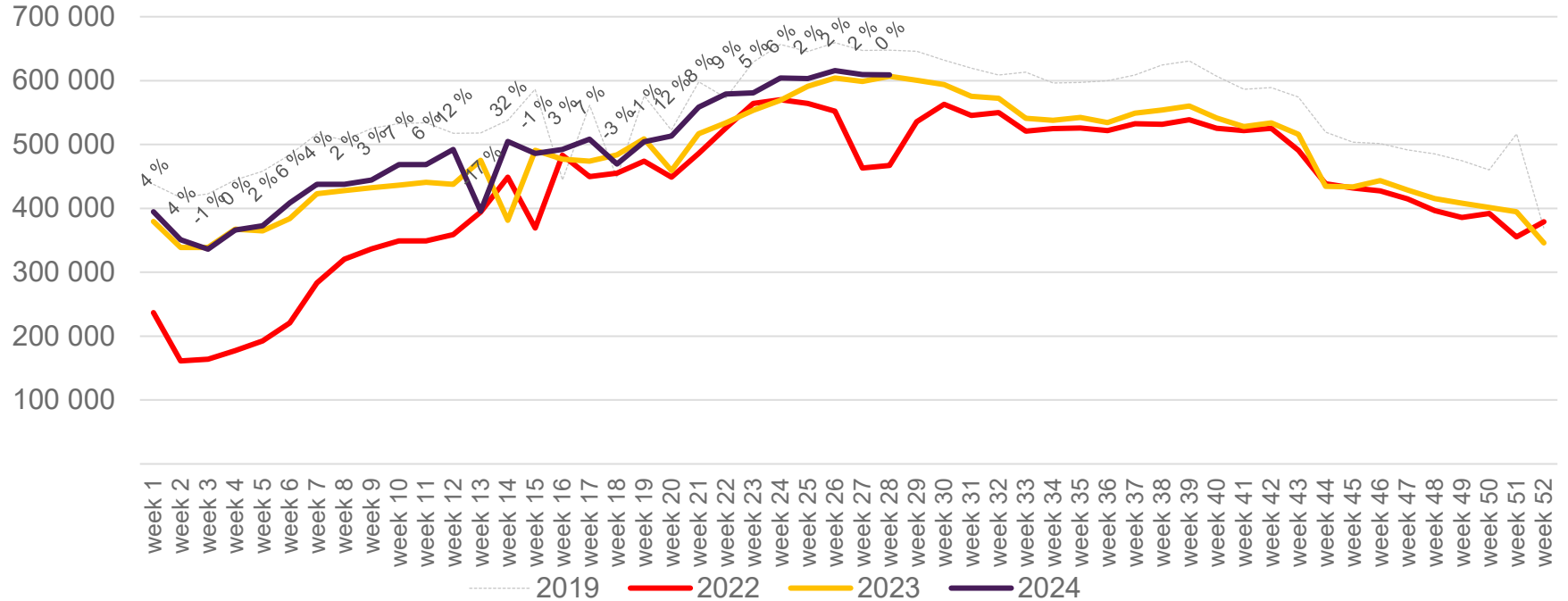
The change is measured against the same week in 2023

Source: SIA, Avinor Statistics



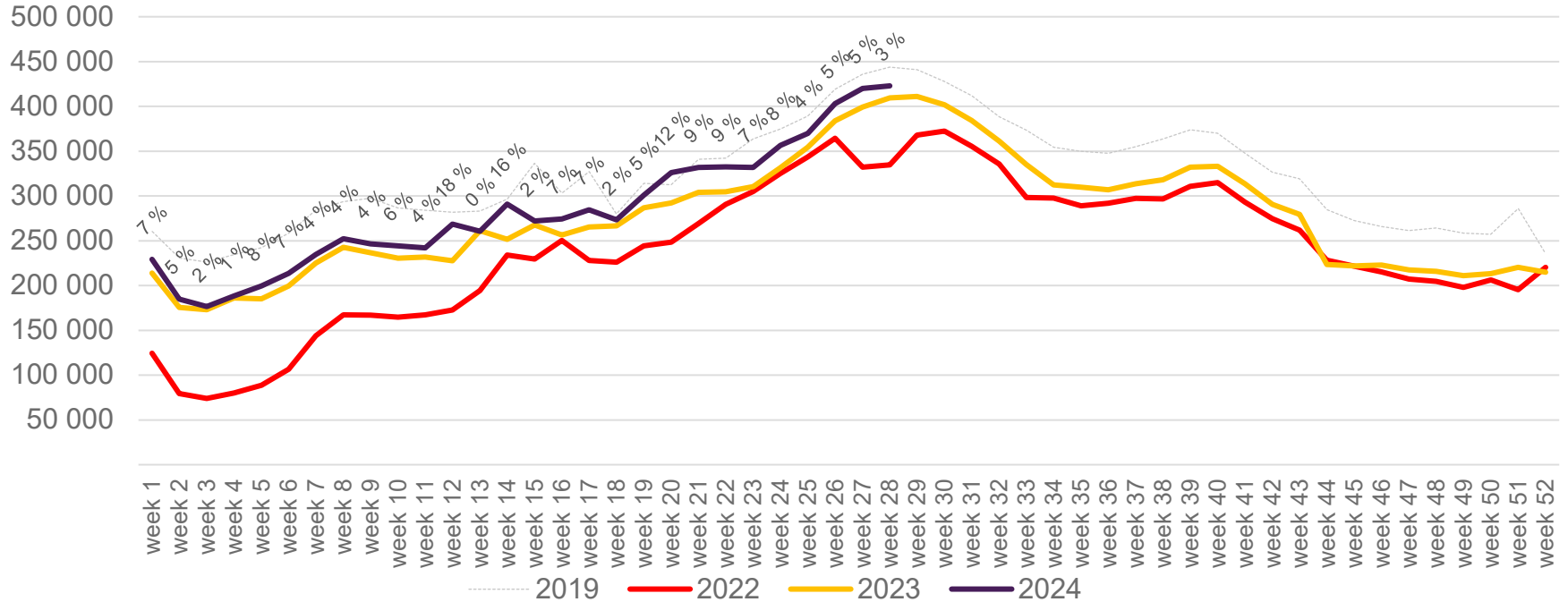
# Passengers OSL total per week

The change is measured against the same week in 2023



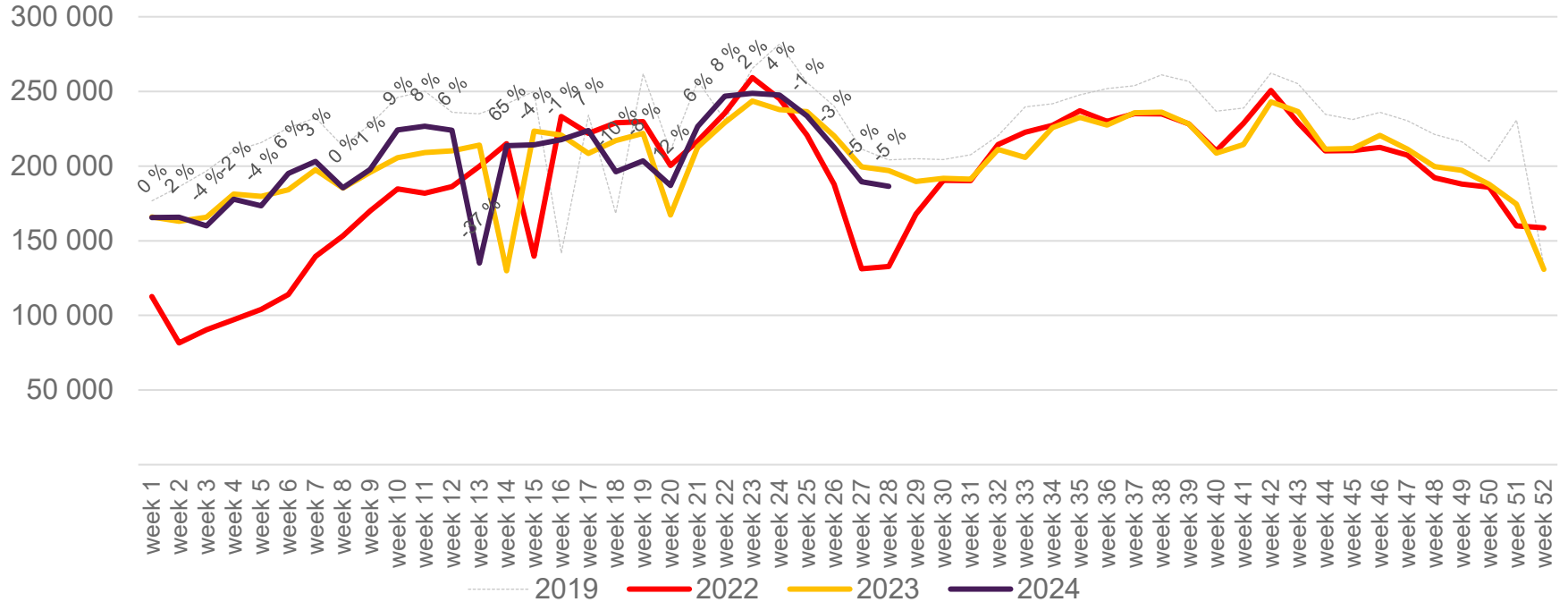
# Passengers OSL international per week

The change is measured against the same week in 2023

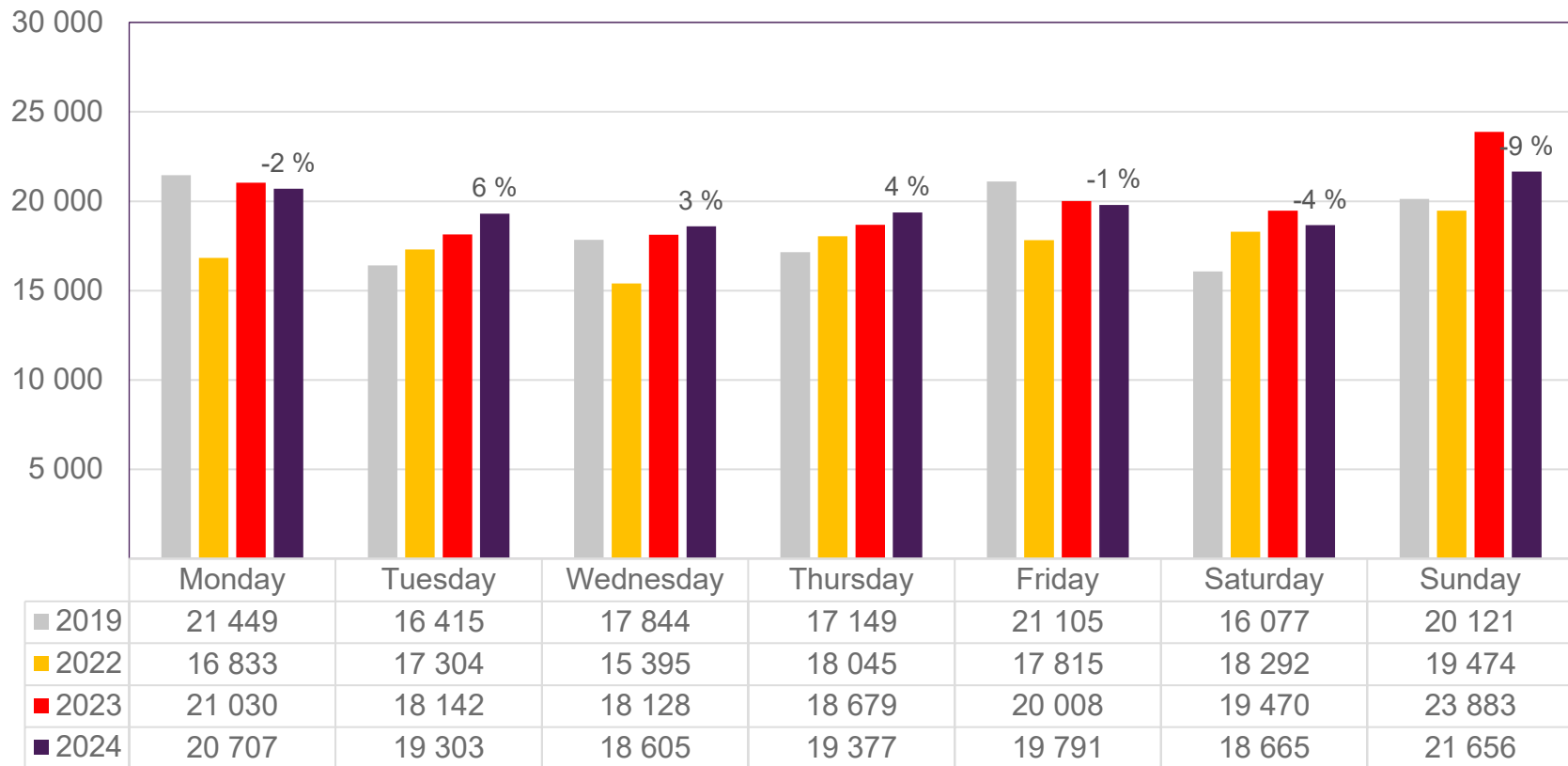


# Passengers OSL domestic per week

The change is measured against the same week in 2023



# Passengers BGO total per day, week 28

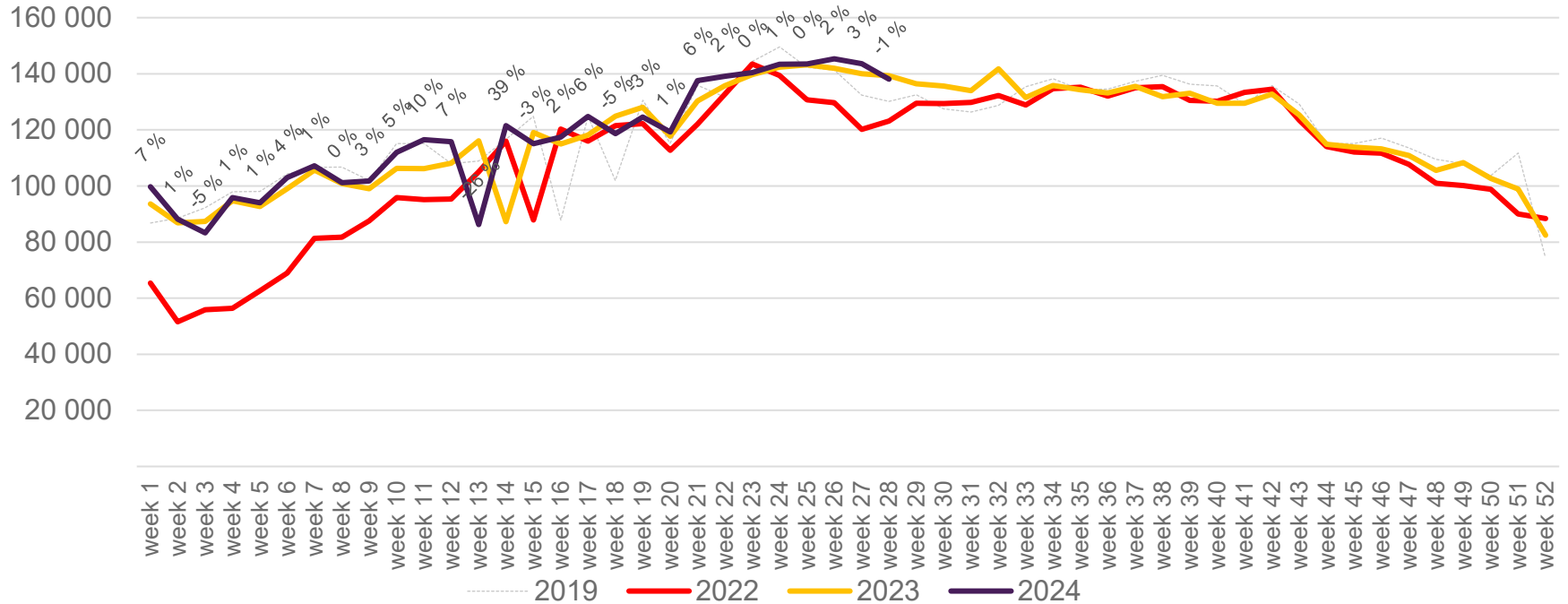


The change is measured against the same week in 2023

Source: SIA, Avinor Statistics

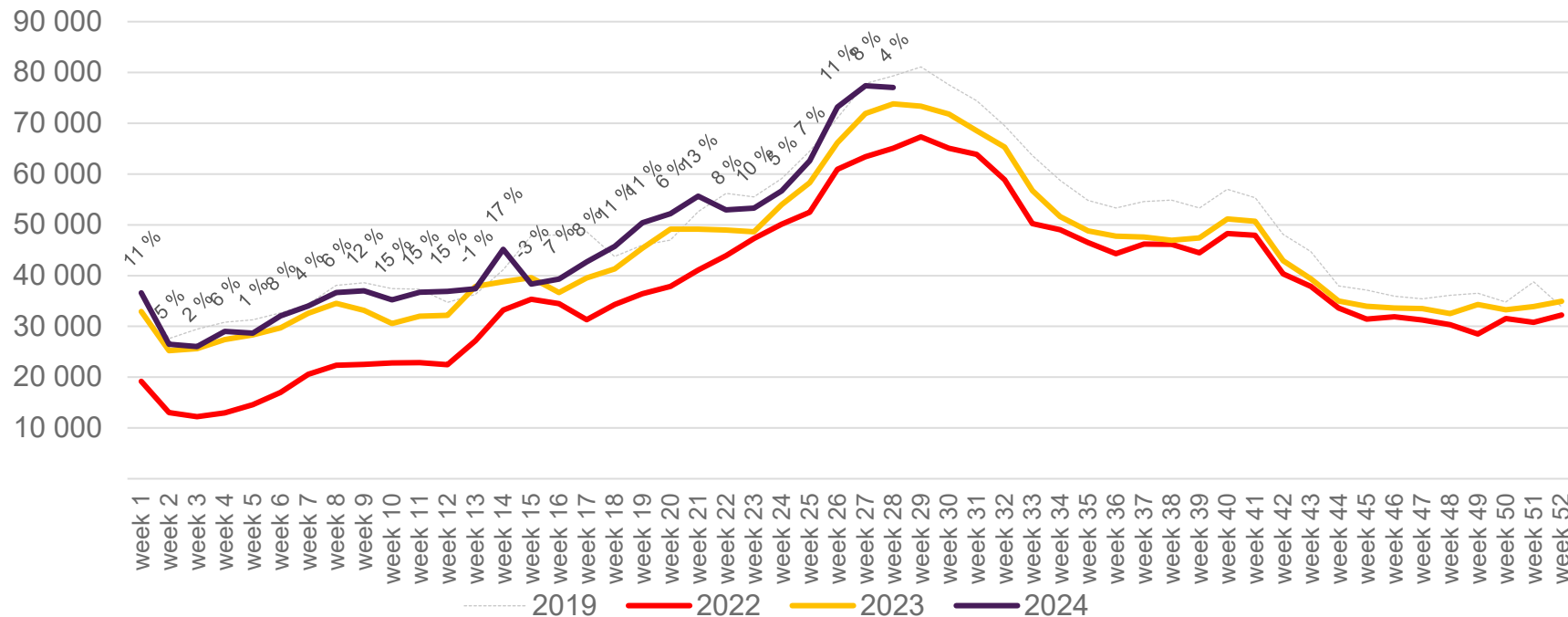
# Passengers BGO total per week

The change is measured against the same week in 2023



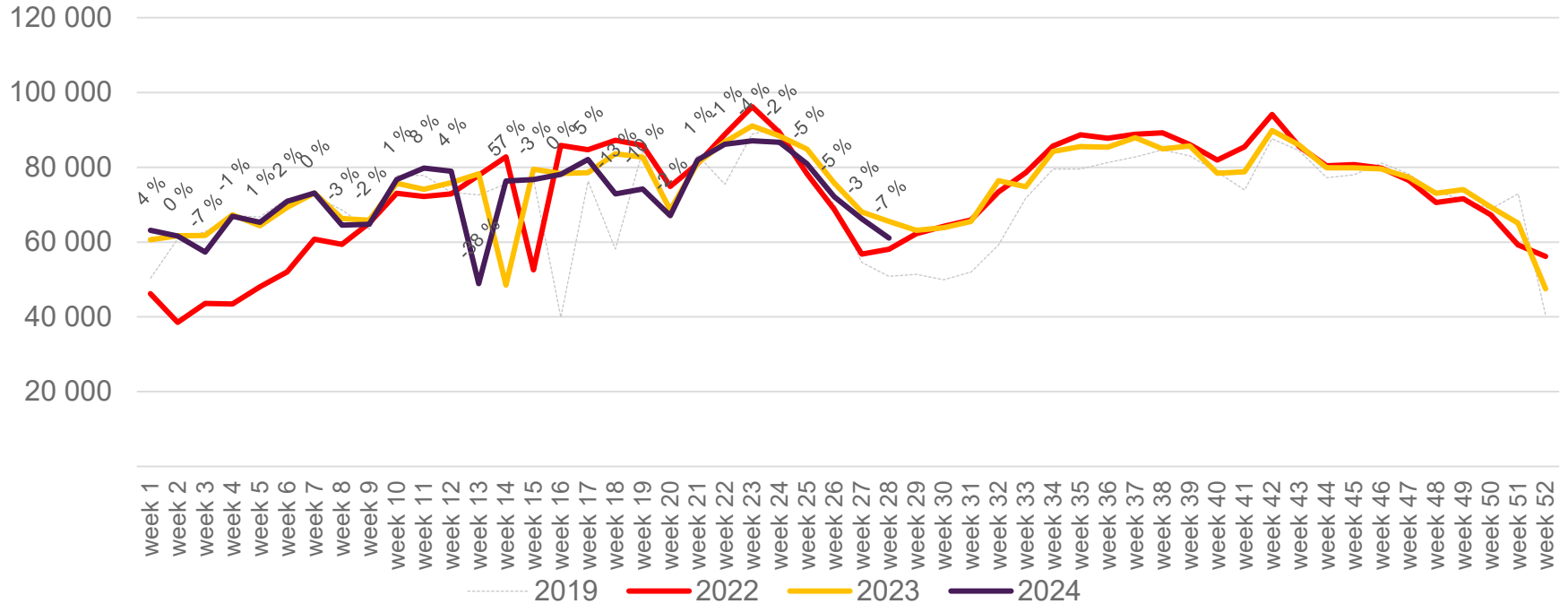
# Passengers BGO international per week

The change is measured against the same week in 2023



# Passengers BGO domestic per week

The change is measured against the same week in 2023

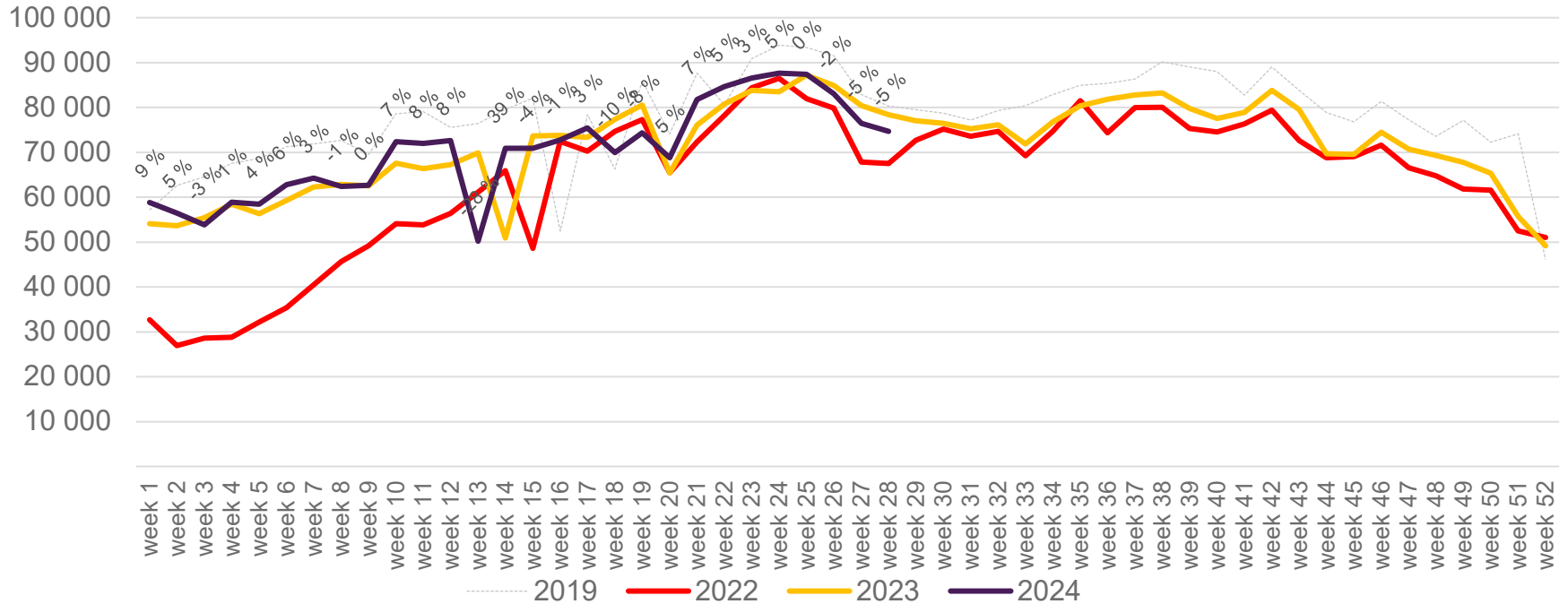






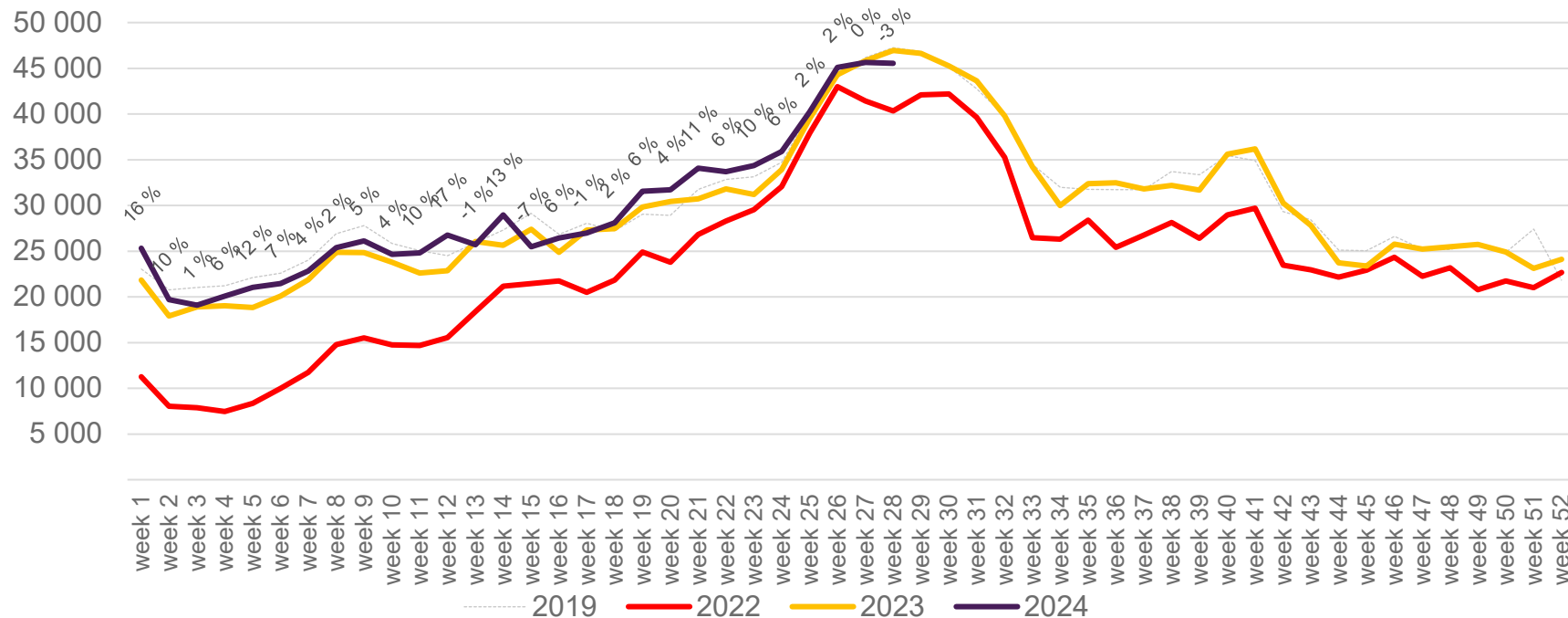
# Passengers SVG total per week

The change is measured against the same week in 2023



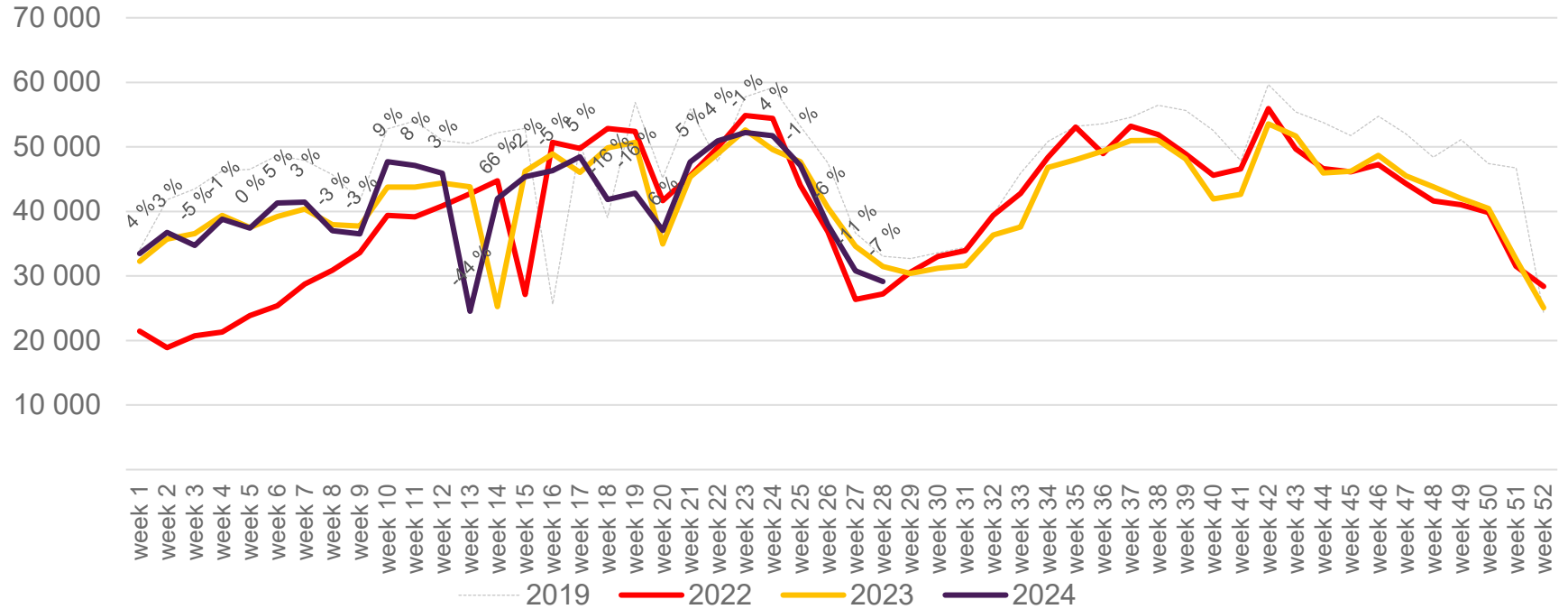
# Passengers SVG international per week

The change is measured against the same week in 2023

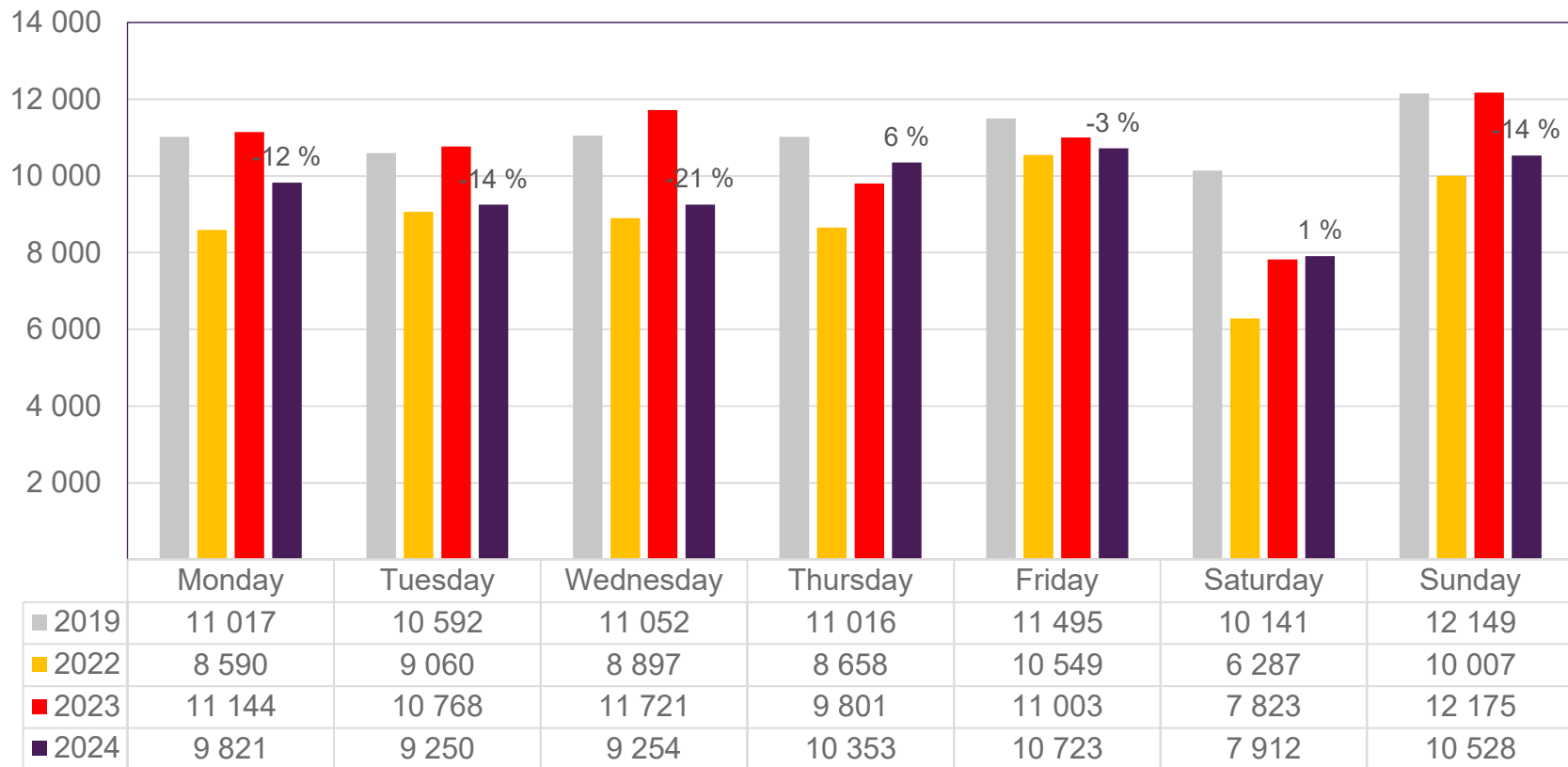


# Passengers SVG domestic per week

The change is measured against the same week in 2023



# Passengers TRD total per day, week 28

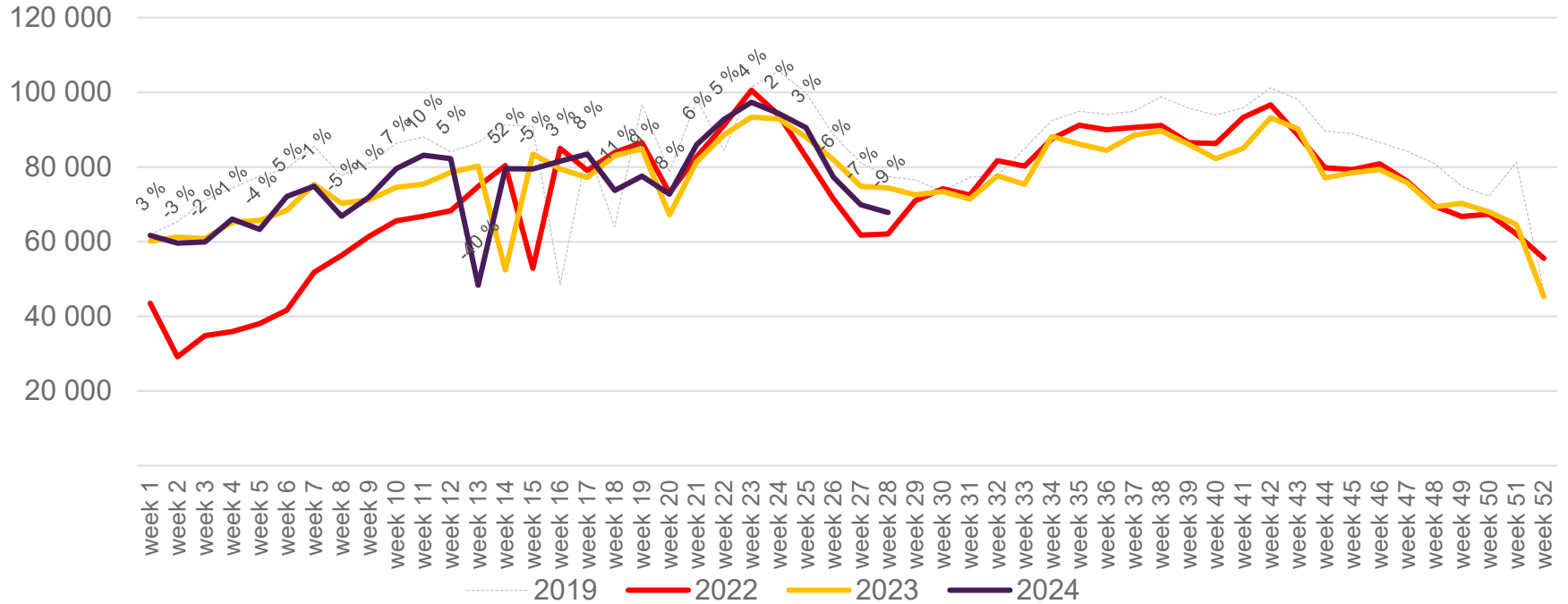


The change is measured against the same week in 2023

Source: SIA, Avinor Statistics

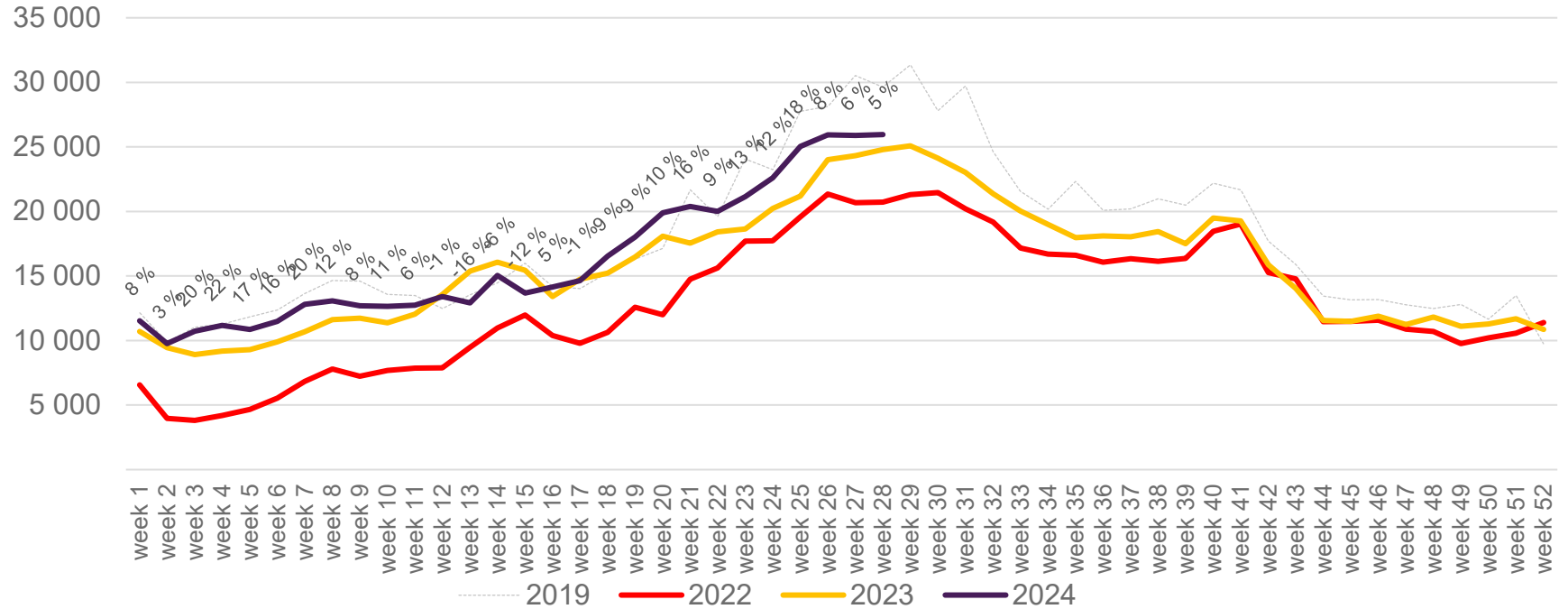
# Passengers TRD total per week

The change is measured against the same week in 2023



# Passengers TRD international per week

The change is measured against the same week in 2023



# Passengers TRD domestic per week

The change is measured against the same week in 2023

