



Passenger numbers per week

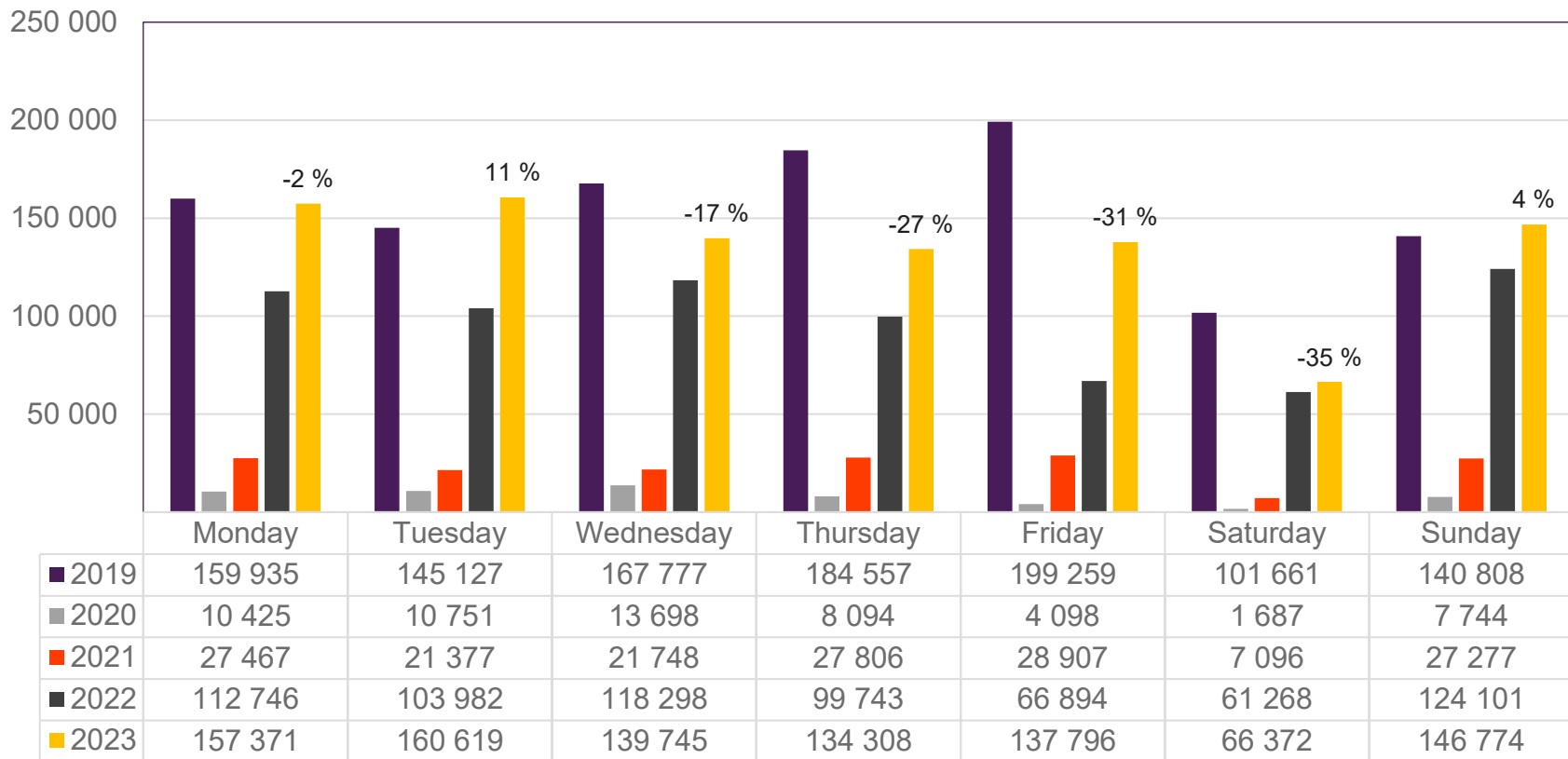
Preliminary figures

- The figures for the previous week are preliminary. It takes some time for all passenger numbers to be reported, so the figures for the previous week may be 1-2% lower than the final figures.
- The figures are taken from Avinor's traffic database.
- Week 1 2019 include numbers from 2018 (31/12 2018)
Week 1 2020 include numbers from 2019 (30-31/12 2019)
Week 52 2021 include numbers from 2022 (1-2/1 2022)
Week 52 2022 include numbers from 2023 (1/1 2023)

Top 10 airports, total week 15

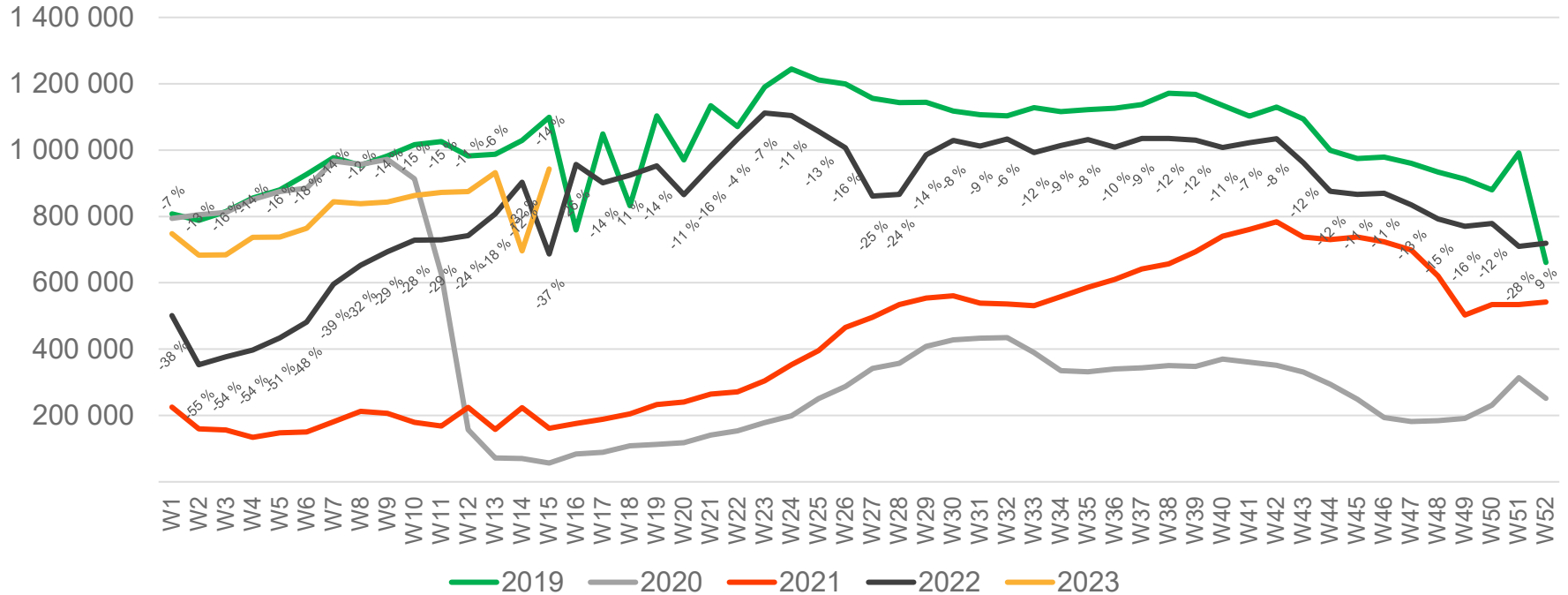
Airport	2019	2020	2021	2022	2023	2023 vs. 2019		2023 vs. 2022	
						Change	Change %	Change	Change %
Oslo/Gardermoen	586 503	20 312	51 479	369 166	484 715	-101 788	-17 %	115 549	31 %
Bergen/Flesland	124 849	10 370	27 447	87 903	116 389	-8 460	-7 %	28 486	32 %
Trondheim/Værnes	90 878	5 445	14 705	52 854	82 980	-7 898	-9 %	30 126	57 %
Stavanger/Sola	82 049	5 022	12 659	48 592	72 561	-9 488	-12 %	23 969	49 %
Tromsø/Langnes	42 783	3 391	12 878	30 622	41 191	-1 592	-4 %	10 569	35 %
Bodø	35 919	2 051	9 397	20 770	32 239	-3 680	-10 %	11 469	55 %
Ålesund/Vigra	24 192	1 543	3 593	14 765	20 922	-3 270	-14 %	6 157	42 %
Kristiansand/Kjevik	23 283	1 302	3 077	9 745	15 978	-7 305	-31 %	6 233	64 %
Harstad/Narvik/Evenes	15 431	966	3 288	12 105	14 605	-826	-5 %	2 500	21 %
Bardufoss	5 847	397	1 236	2 610	5 525	-322	-6 %	2 915	112 %

Passengers Avinor total per day, week 15



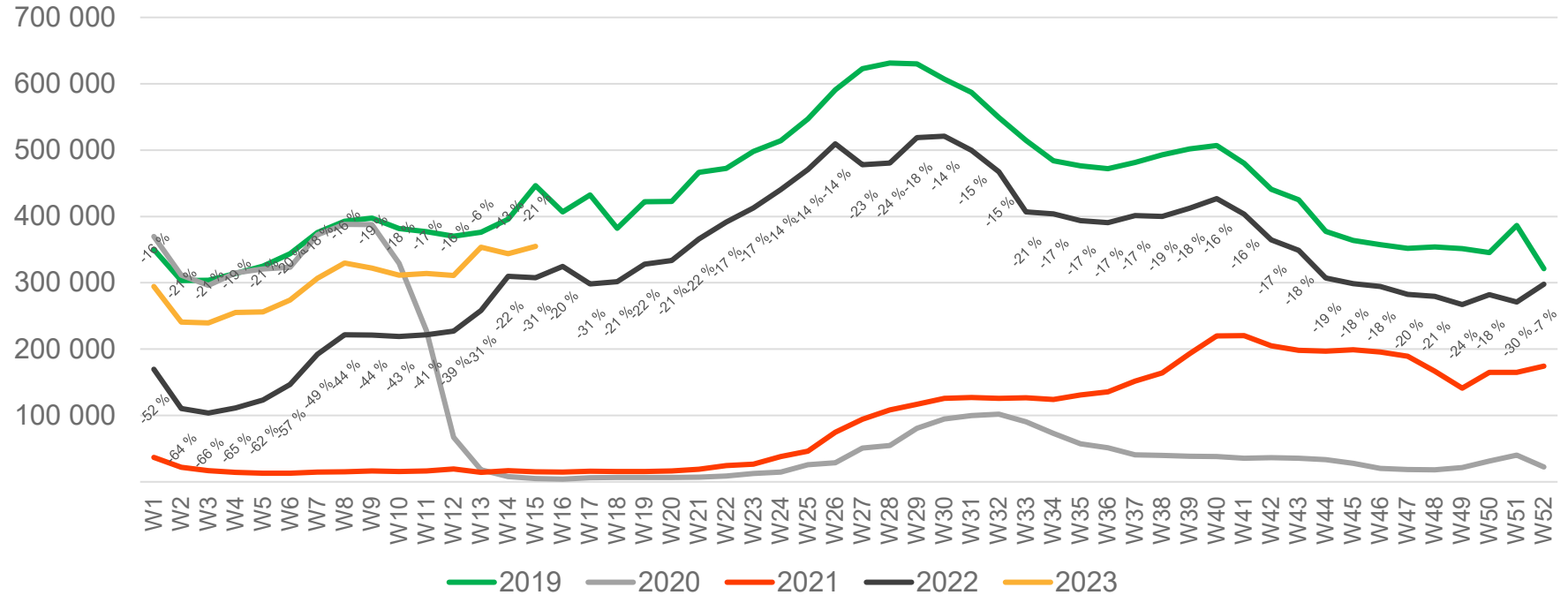
The change is measured from 2019.

Passengers Avinor total per week



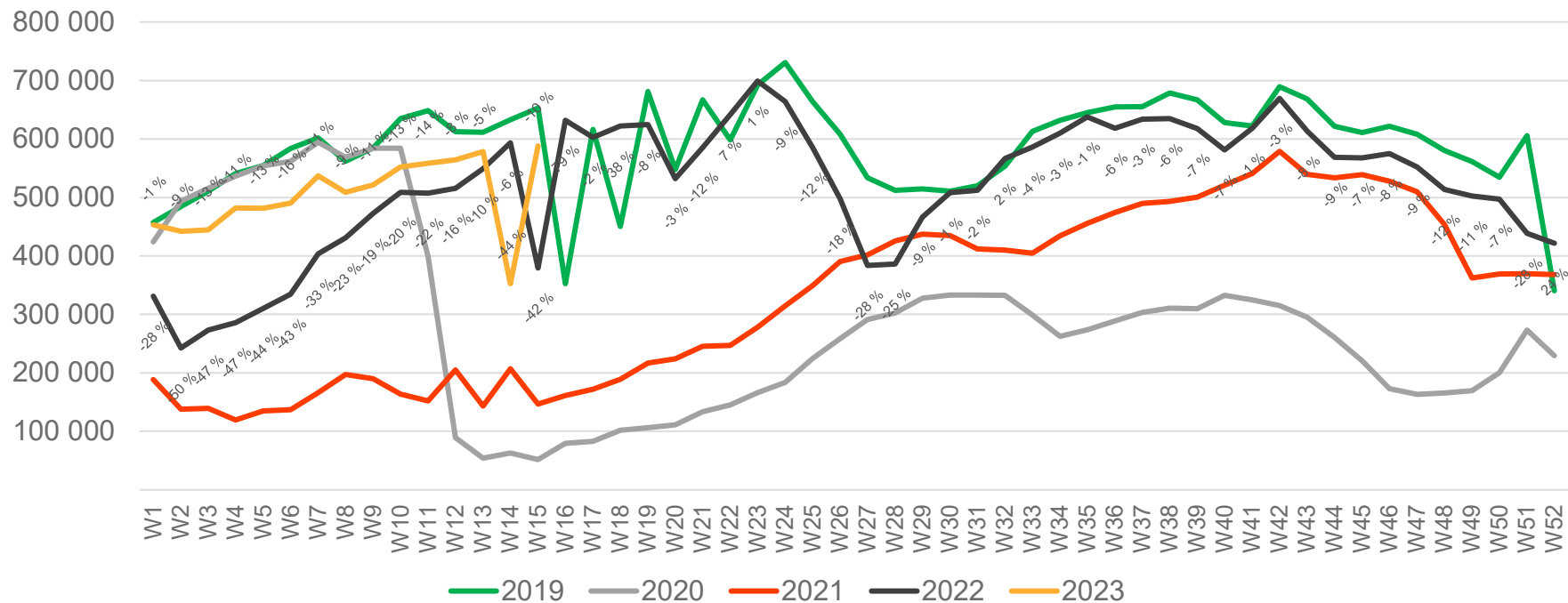
• Week 1 2019 is 31/12-18 – 6/1-19. week 1 2020 is 30/12-19 – 5/1-20. Week 52 2021 is 27/12-21 – 2/1-22. Week 52 2022 is 26/12-22 – 1/1-23.

Passengers Avinor international per week



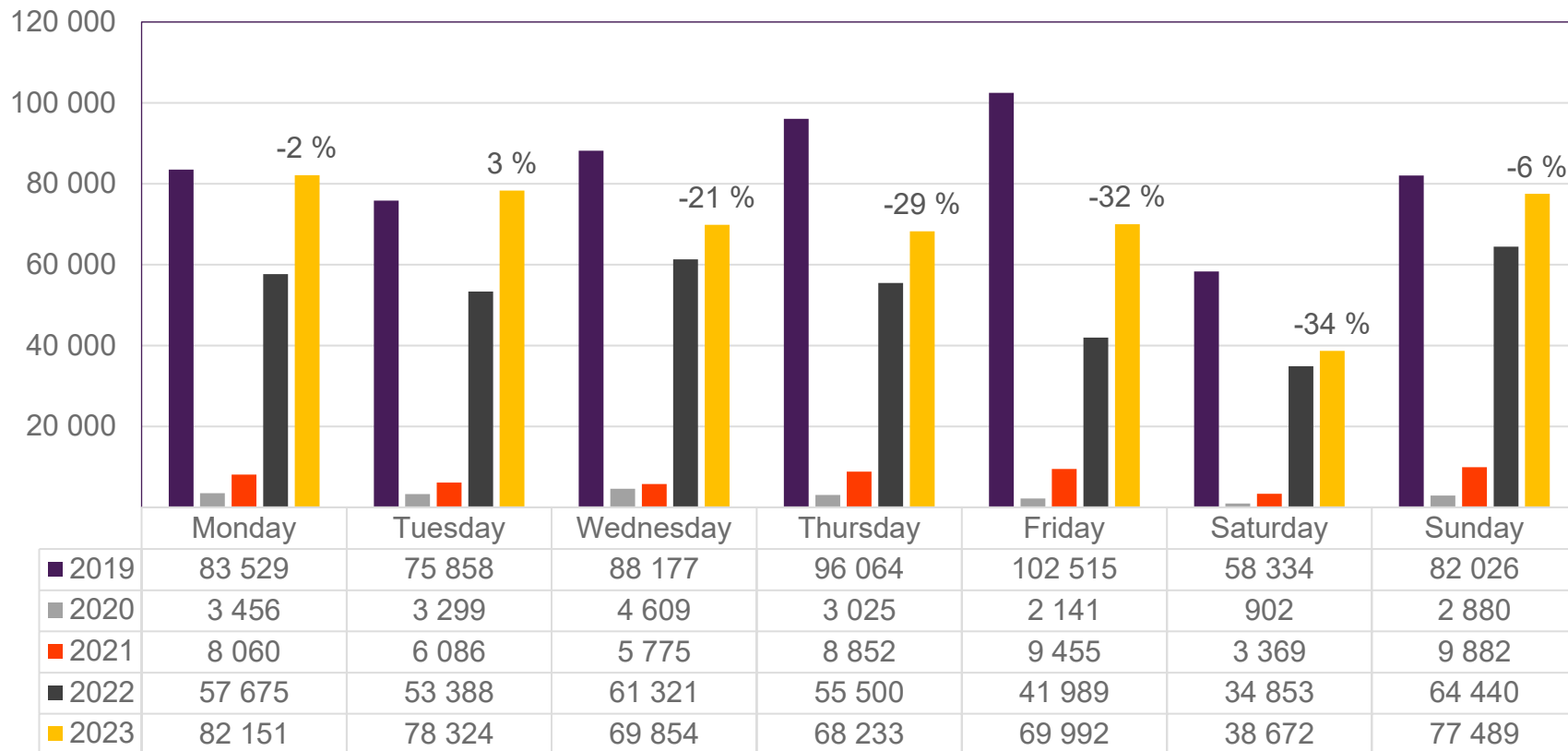
• Week 1 2019 is 31/12-18 – 6/1-19. week 1 2020 is 30/12-19 – 5/1-20. Week 52 2021 is 27/12-21 – 2/1-22. Week 52 2022 is 26/12-22 – 1/1-23.

Passengers Avinor domestic per week



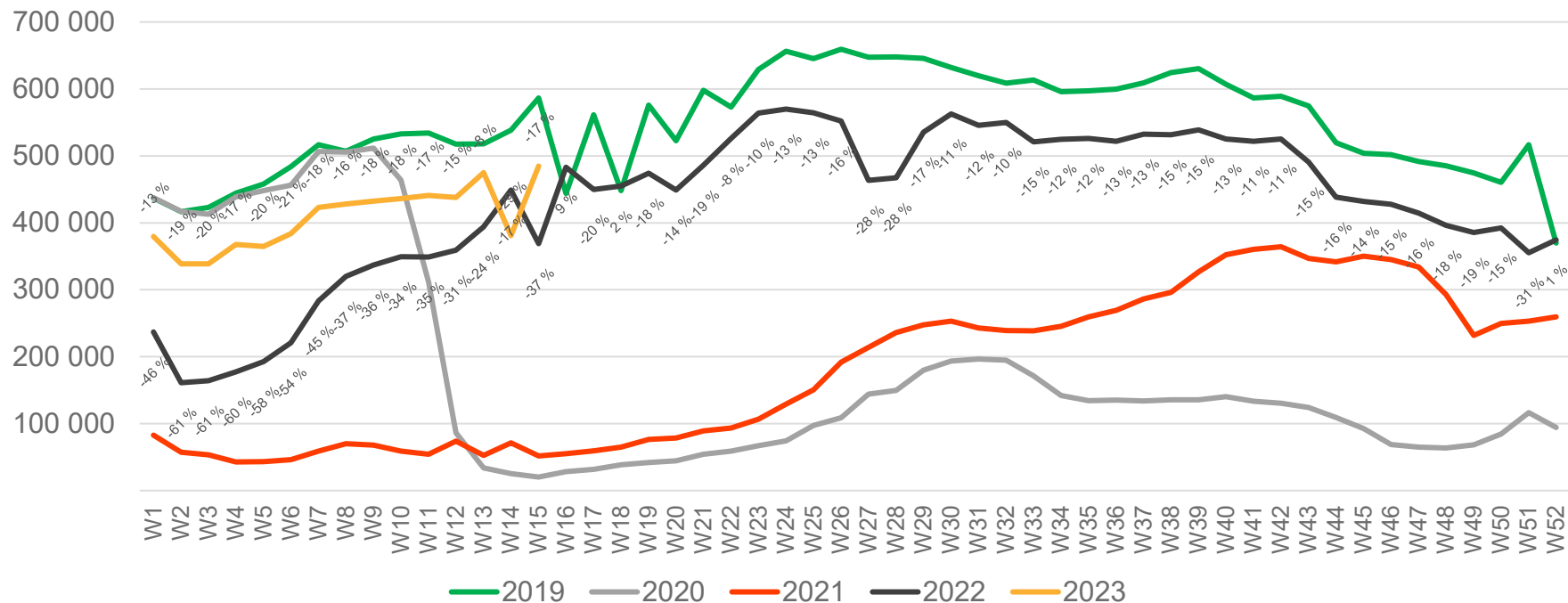
• Week 1 2019 is 31/12-18 – 6/1-19. week 1 2020 is 30/12-19 – 5/1-20. Week 52 2021 is 27/12-21 – 2/1-22. Week 52 2022 is 26/12-22 – 1/1-23.

Passengers OSL total per day, week 15



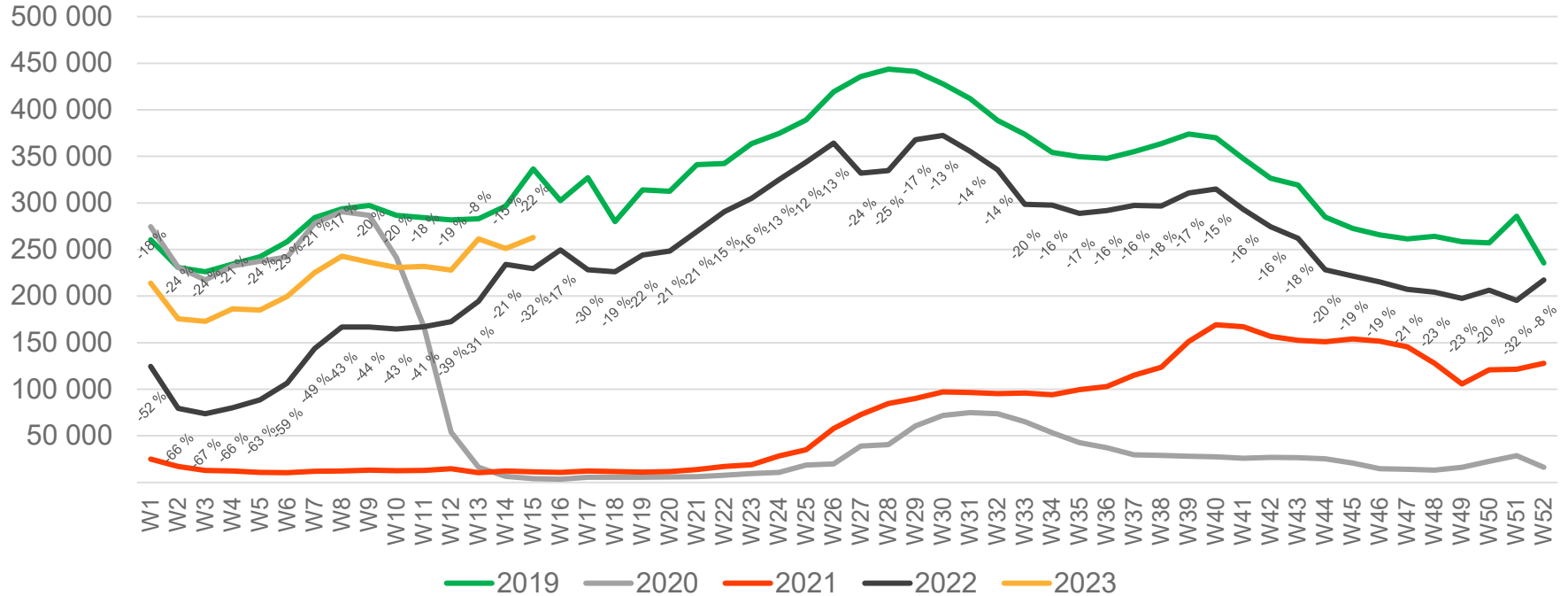
The change is measured from 2019.

Passengers OSL total per week



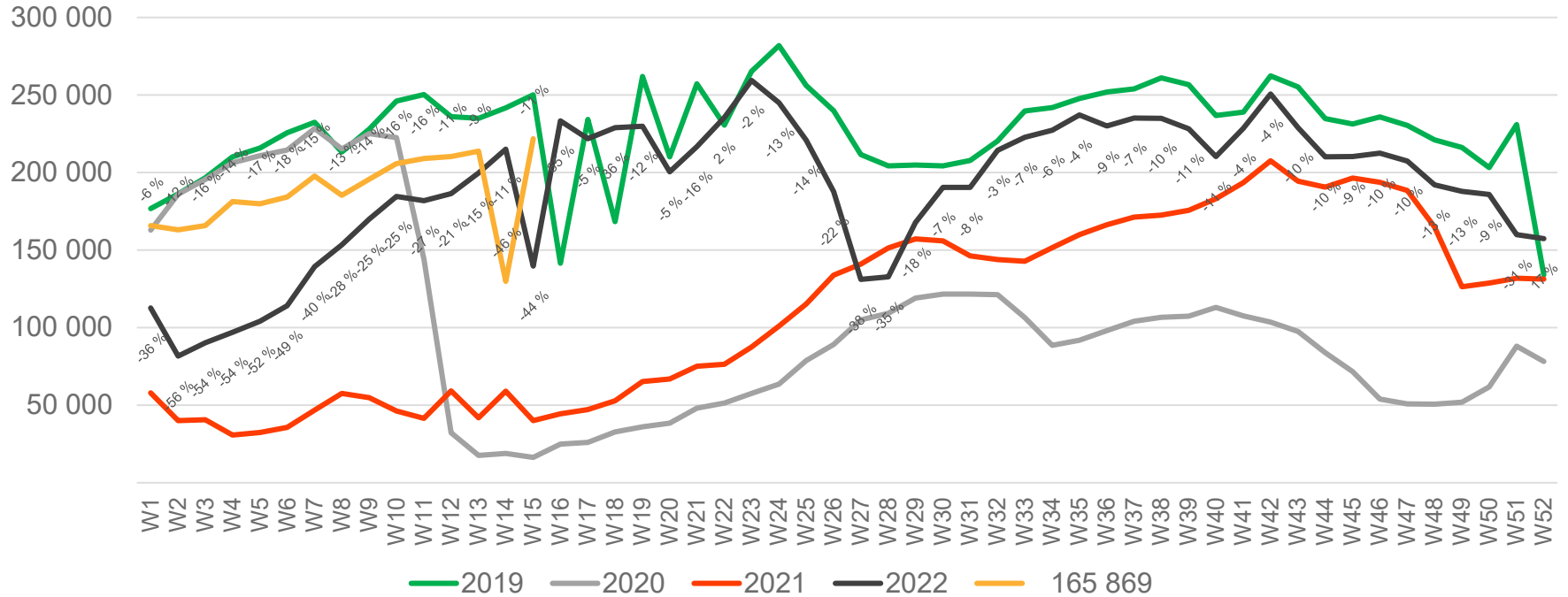
• Week 1 2019 is 31/12-18 – 6/1-19. week 1 2020 is 30/12-19 – 5/1-20. Week 52 2021 is 27/12-21 – 2/1-22. Week 52 2022 is 26/12-22 – 1/1-23.

Passengers OSL international per week



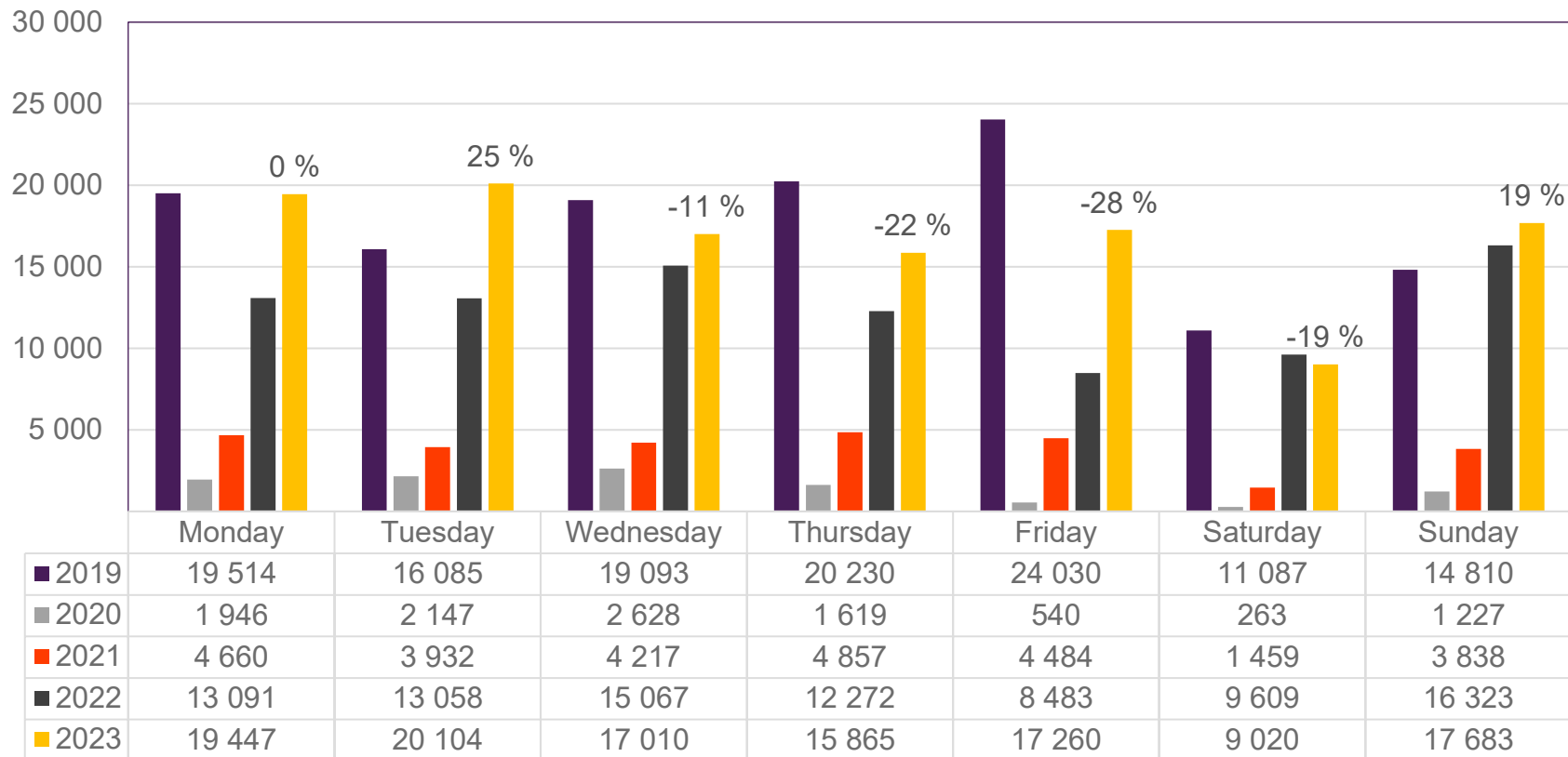
• Week 1 2019 is 31/12-18 – 6/1-19. week 1 2020 is 30/12-19 – 5/1-20. Week 52 2021 is 27/12-21 – 2/1-22. Week 52 2022 is 26/12-22 – 1/1-23.

Passengers OSL domestic per week



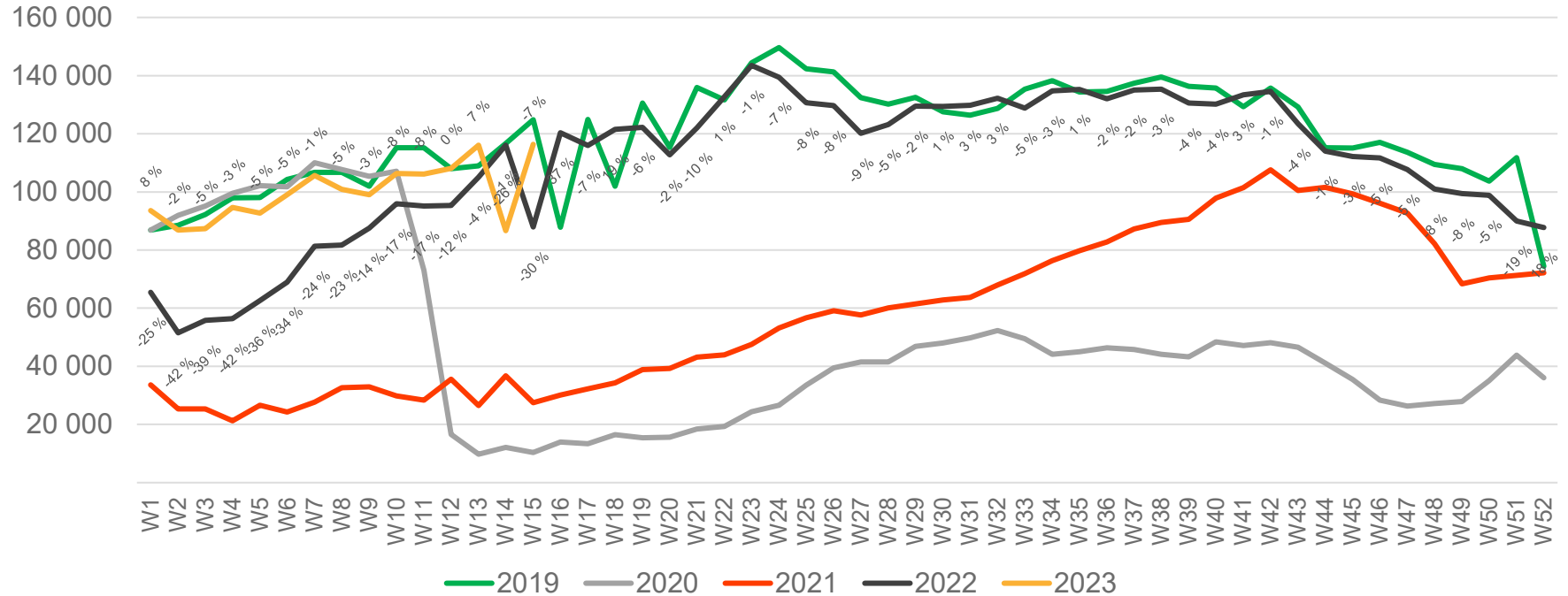
• Week 1 2019 is 31/12-18 – 6/1-19. week 1 2020 is 30/12-19 – 5/1-20. Week 52 2021 is 27/12-21 – 2/1-22. Week 52 2022 is 26/12-22 – 1/1-23.

Passengers BGO total per day, week 15



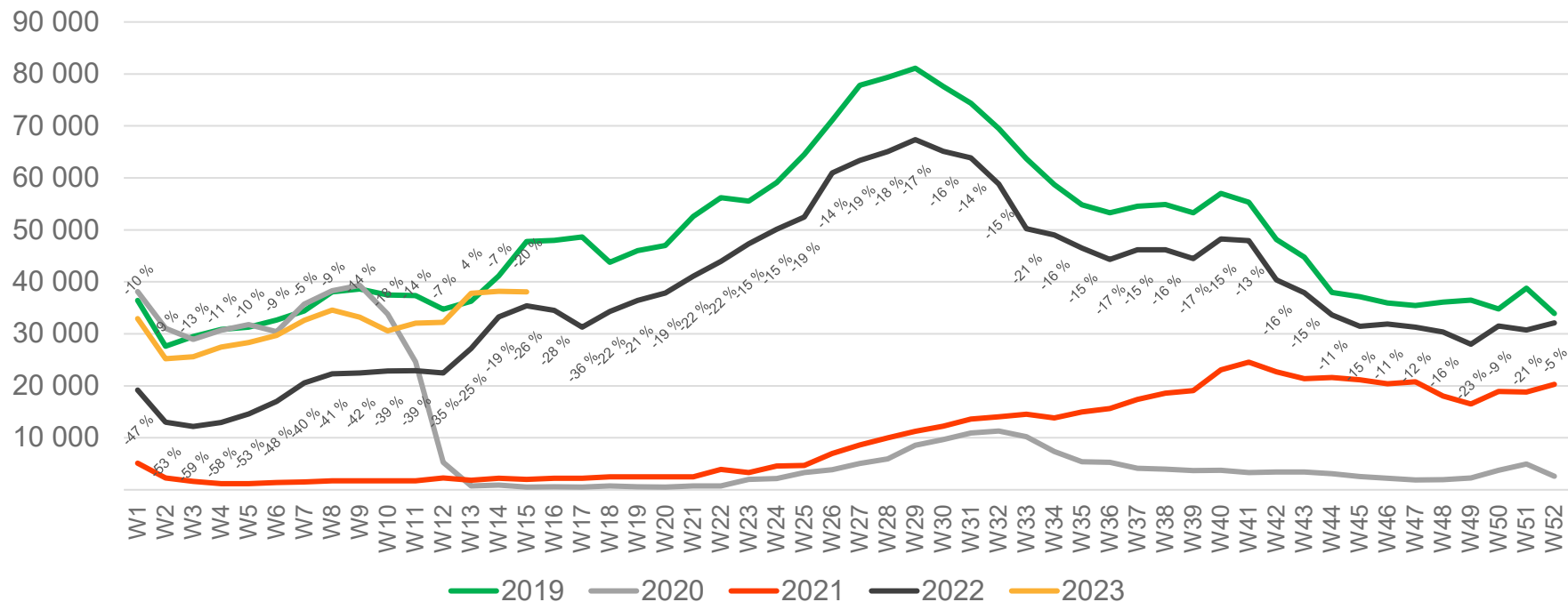
The change is measured from 2019.

Passengers BGO total per week



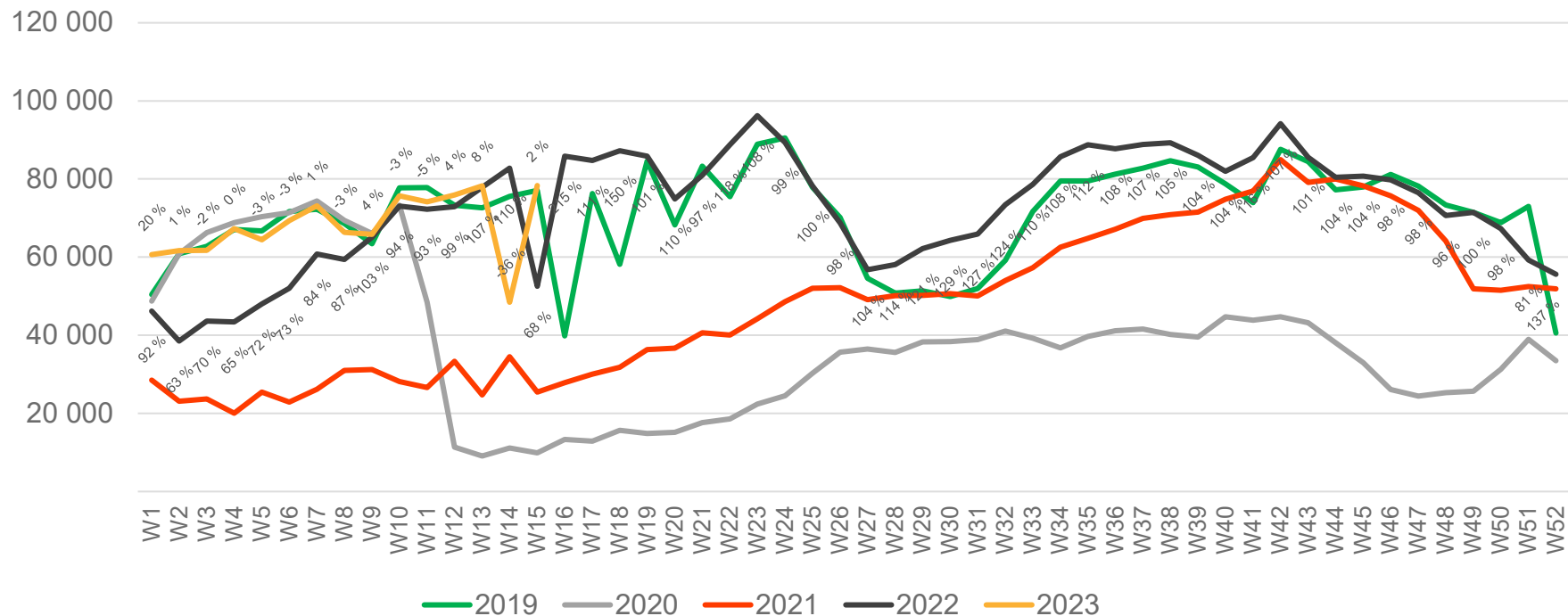
• Week 1 2019 is 31/12-18 – 6/1-19. week 1 2020 is 30/12-19 – 5/1-20. Week 52 2021 is 27/12-21 – 2/1-22. Week 52 2022 is 26/12-22 – 1/1-23.

Passengers BGO international per week



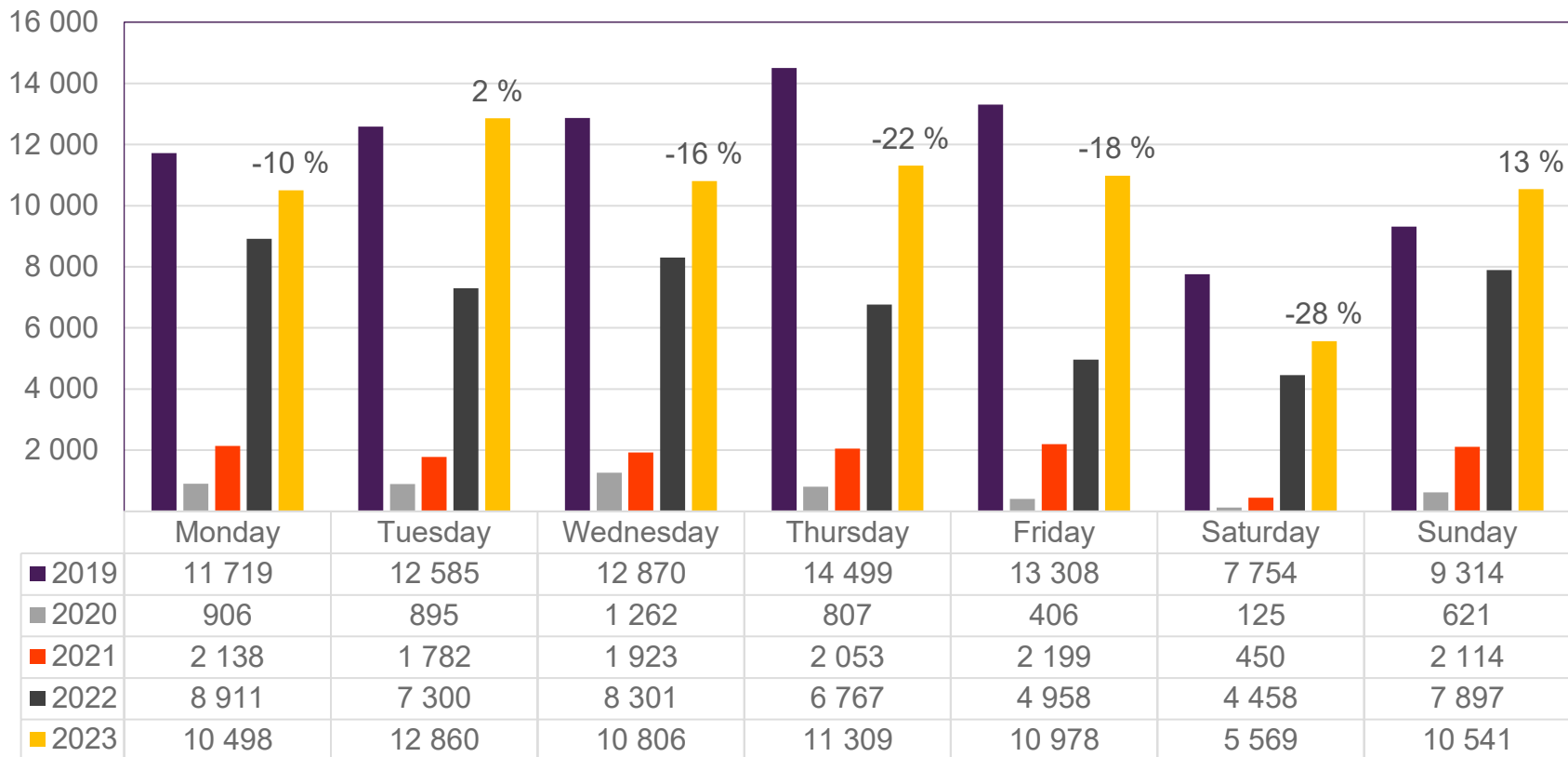
• Week 1 2019 is 31/12-18 – 6/1-19. week 1 2020 is 30/12-19 – 5/1-20. Week 52 2021 is 27/12-21 – 2/1-22. Week 52 2022 is 26/12-22 – 1/1-23.

Passengers BGO domestic per week



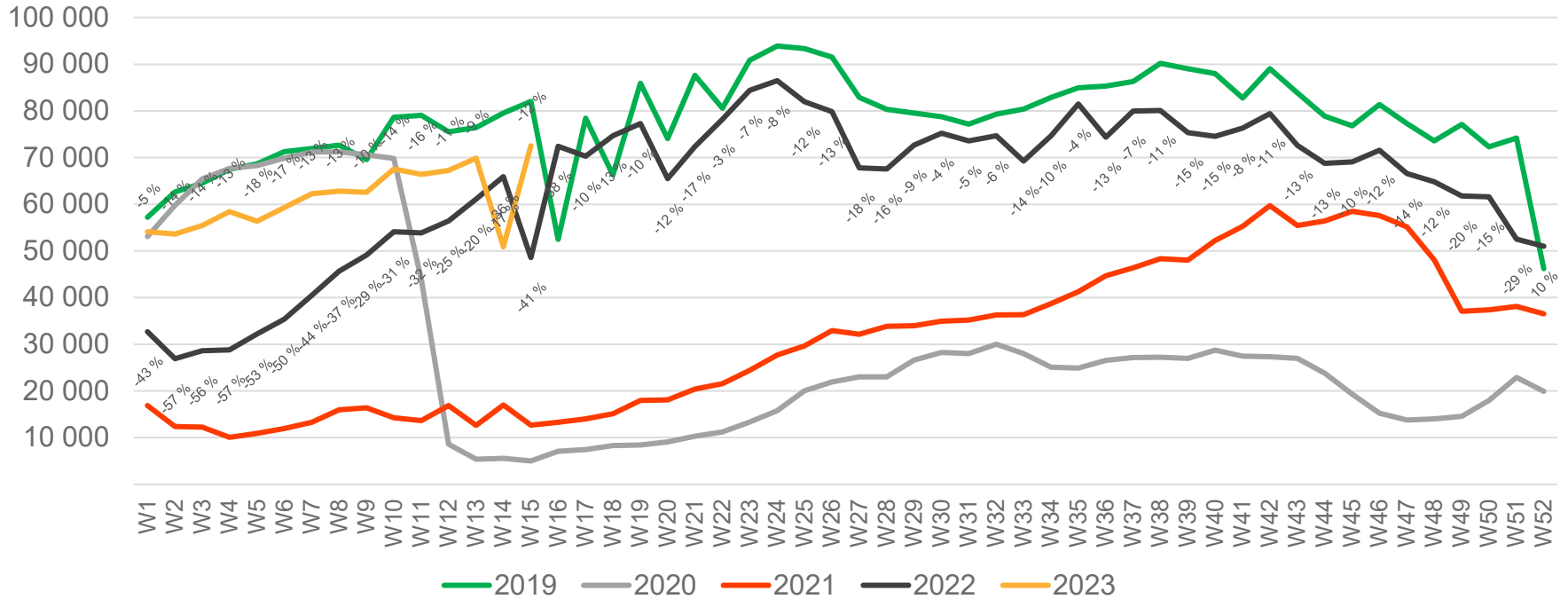
• Week 1 2019 is 31/12-18 – 6/1-19. week 1 2020 is 30/12-19 – 5/1-20. Week 52 2021 is 27/12-21 – 2/1-22. Week 52 2022 is 26/12-22 – 1/1-23.

Passengers SVG total per day, week 15



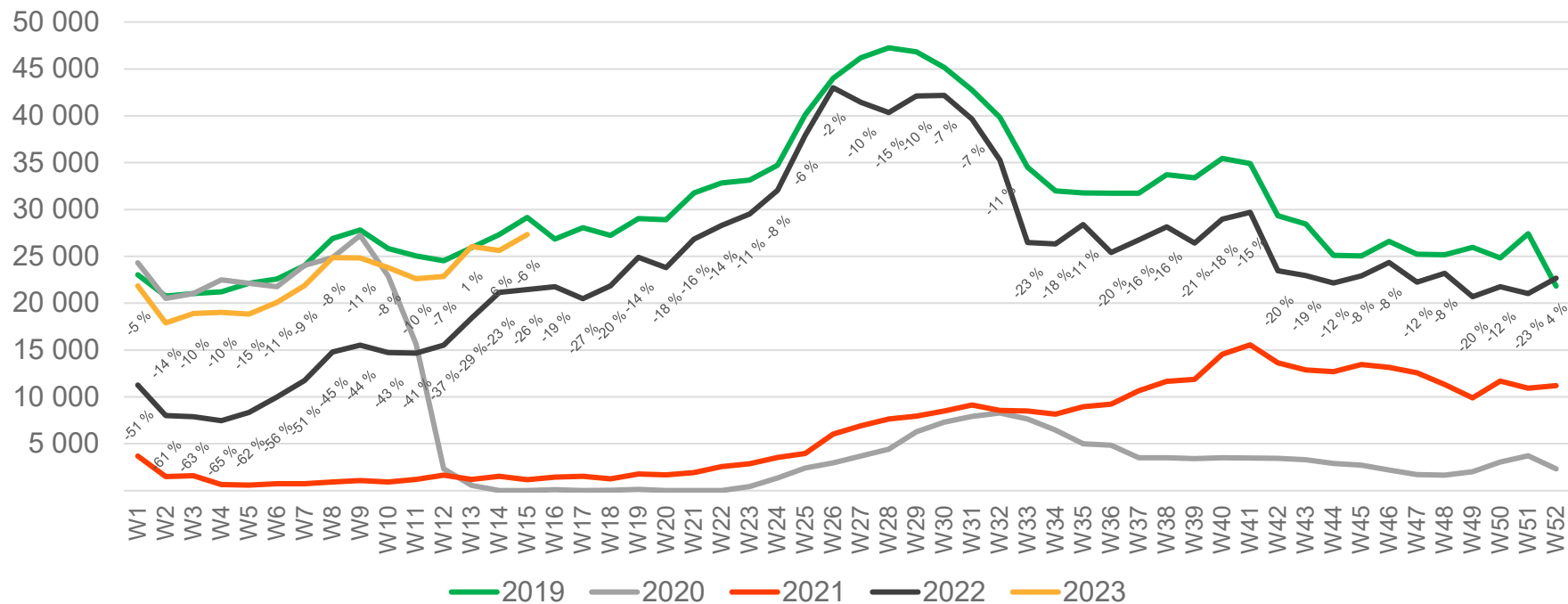
The change is measured from 2019.

Passengers SVG total per week



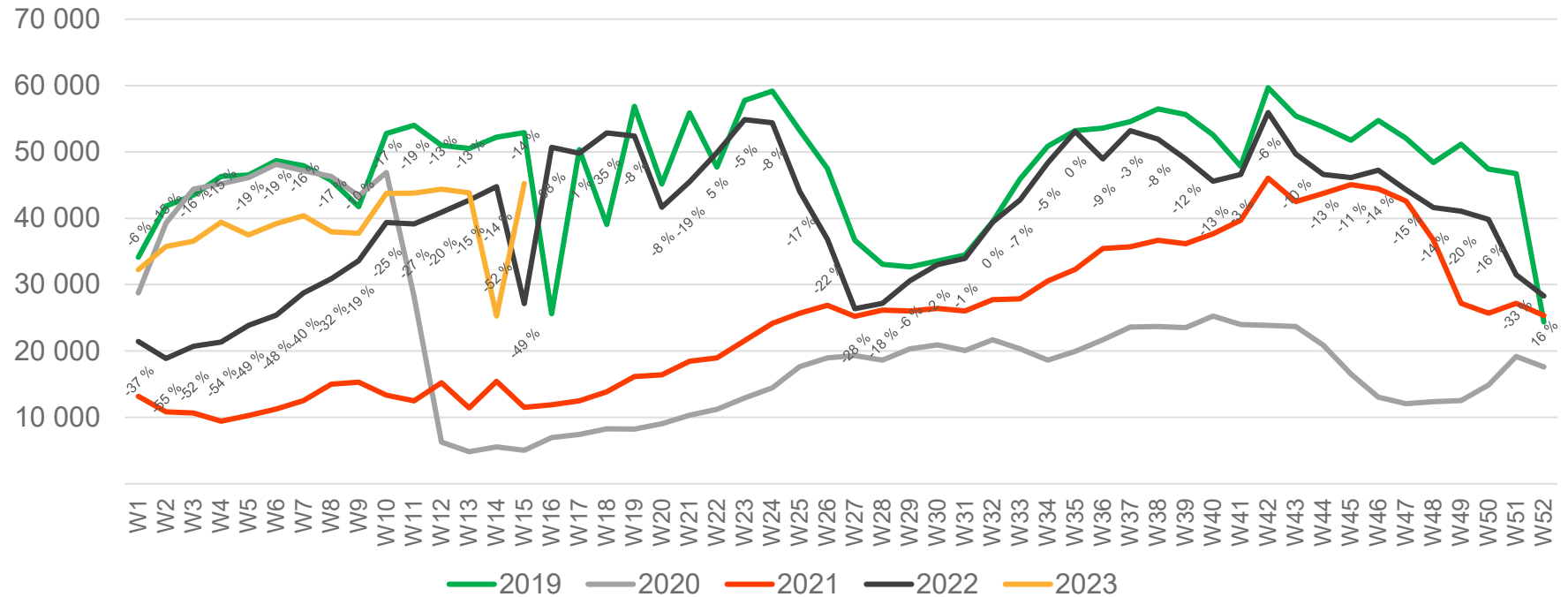
• Week 1 2019 is 31/12-18 – 6/1-19. week 1 2020 is 30/12-19 – 5/1-20. Week 52 2021 is 27/12-21 – 2/1-22. Week 52 2022 is 26/12-22 – 1/1-23.

Passengers SVG international per week



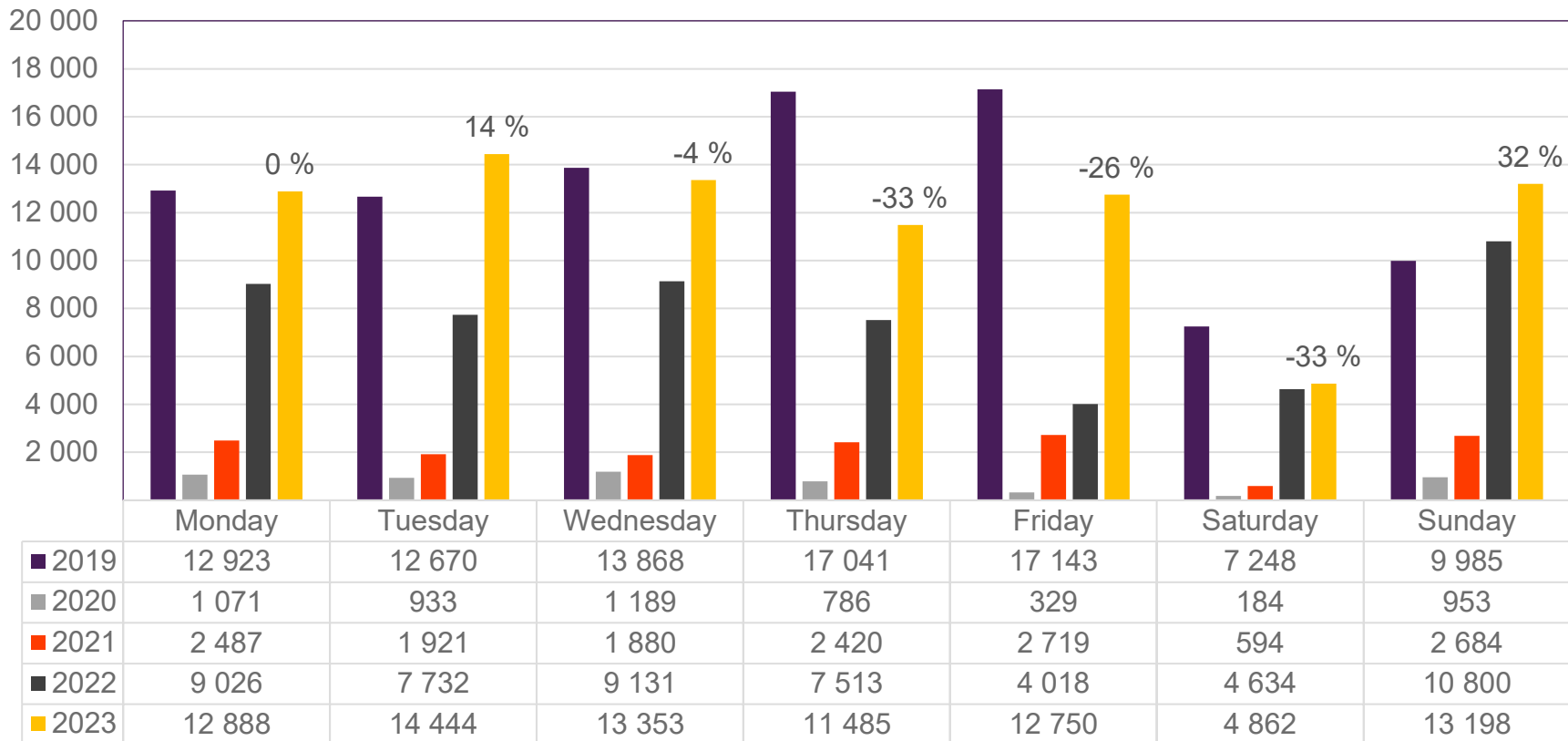
• Week 1 2019 is 31/12-18 – 6/1-19. week 1 2020 is 30/12-19 – 5/1-20. Week 52 2021 is 27/12-21 – 2/1-22. Week 52 2022 is 26/12-22 – 1/1-23.

Passengers SVG domestic per week



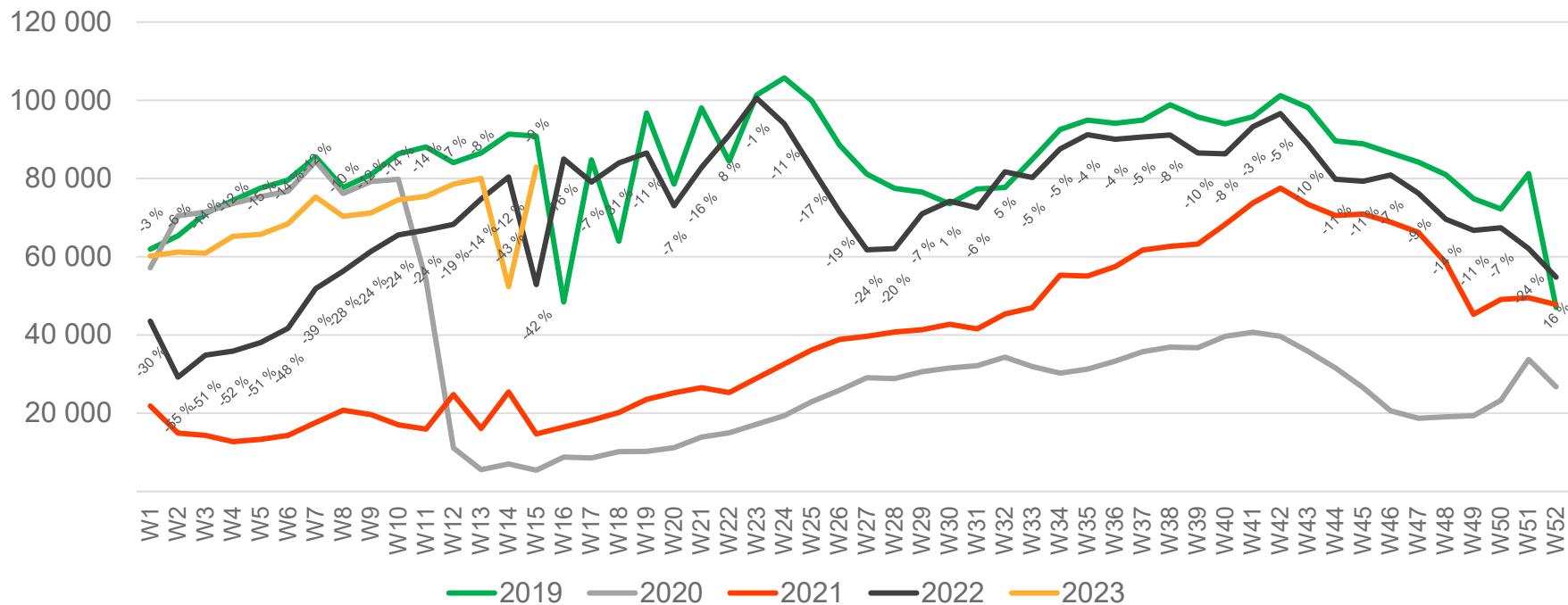
• Week 1 2019 is 31/12-18 – 6/1-19. week 1 2020 is 30/12-19 – 5/1-20. Week 52 2021 is 27/12-21 – 2/1-22. Week 52 2022 is 26/12-22 – 1/1-23.

Passengers TRD total per day, week 15



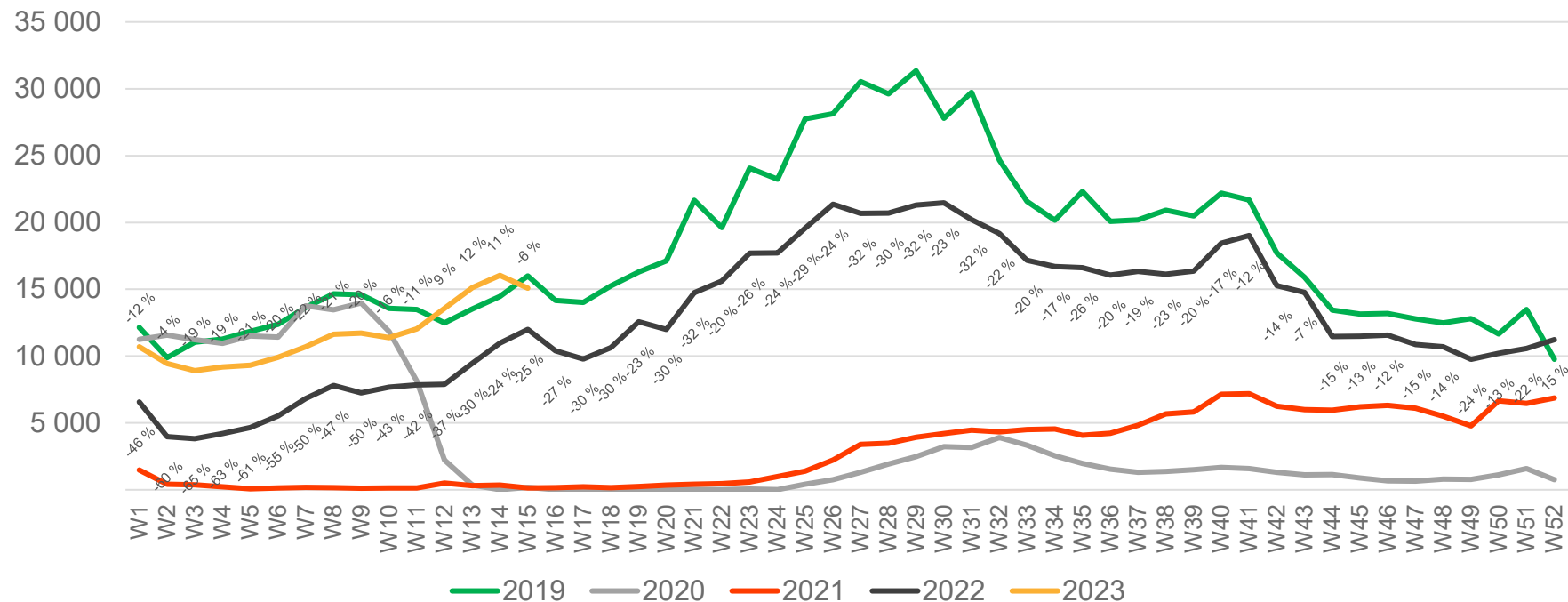
The change is measured from 2019.

Passengers TRD total per week



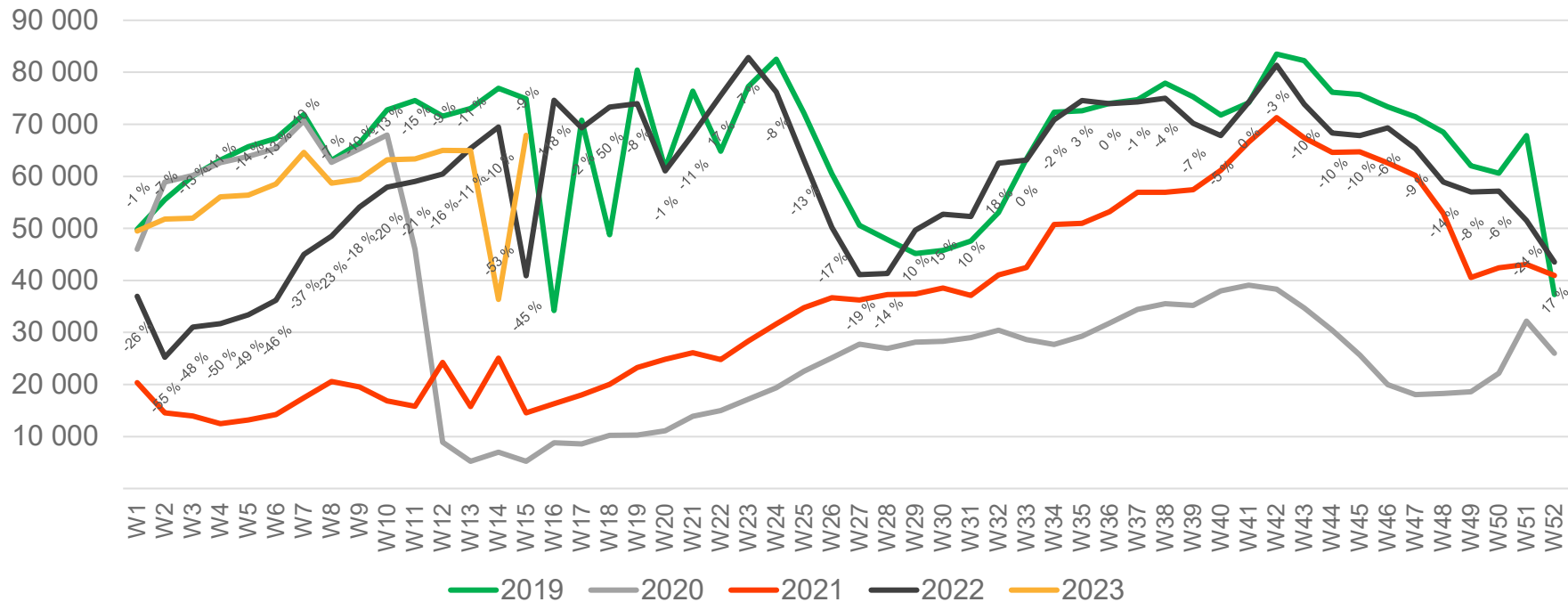
• Week 1 2019 is 31/12-18 – 6/1-19. week 1 2020 is 30/12-19 – 5/1-20. Week 52 2021 is 27/12-21 – 2/1-22. Week 52 2022 is 26/12-22 – 1/1-23.

Passengers TRD international per week



• Week 1 2019 is 31/12-18 – 6/1-19. week 1 2020 is 30/12-19 – 5/1-20. Week 52 2021 is 27/12-21 – 2/1-22. Week 52 2022 is 26/12-22 – 1/1-23.

Passengers TRD domestic per week



• Week 1 2019 is 31/12-18 – 6/1-19. week 1 2020 is 30/12-19 – 5/1-20. Week 52 2021 is 27/12-21 – 2/1-22. Week 52 2022 is 26/12-22 – 1/1-23.