



Passenger numbers per week

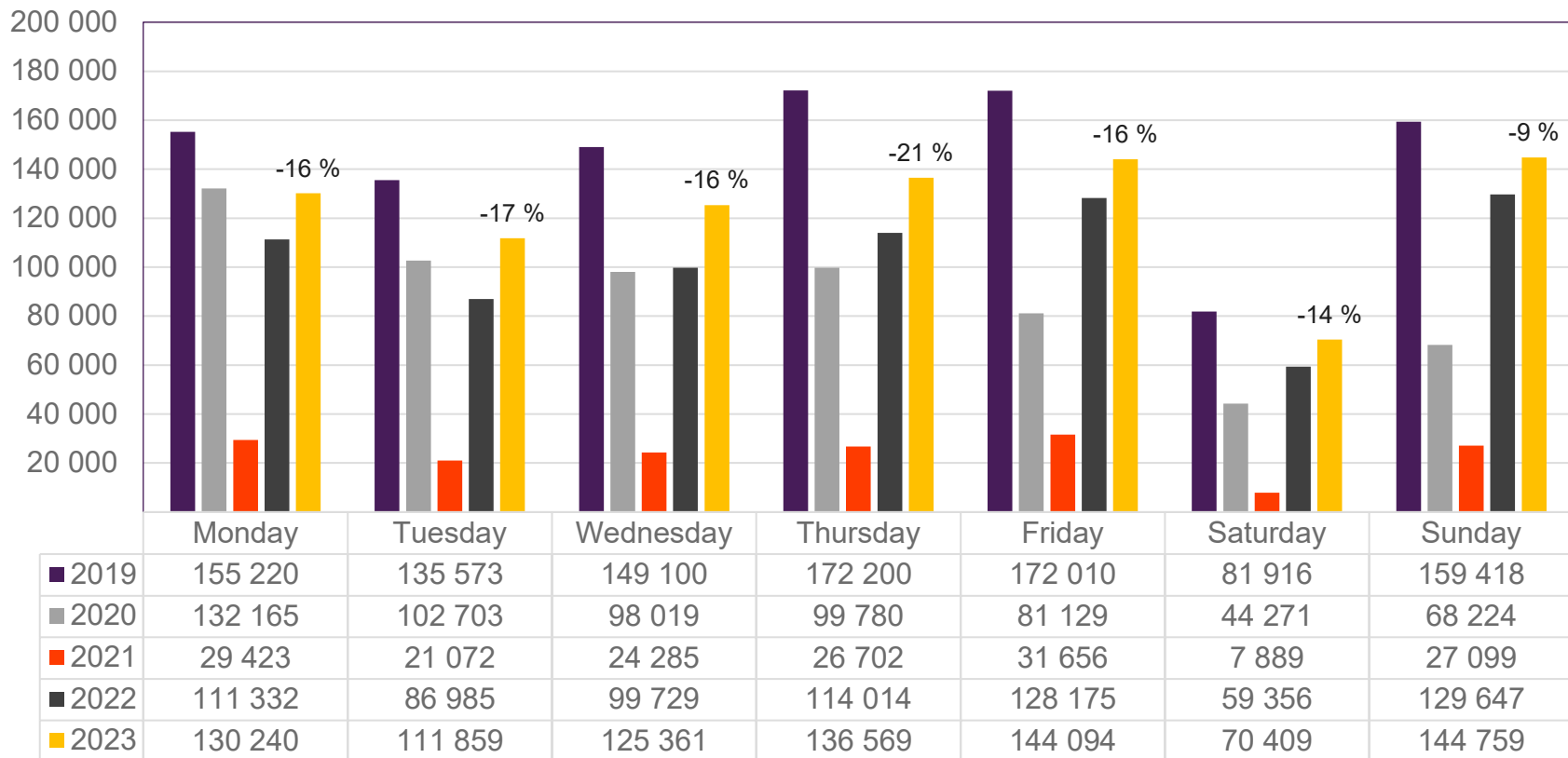
Preliminary figures

- The figures for the previous week are preliminary. It takes some time for all passenger numbers to be reported, so the figures for the previous week may be 1-2% lower than the final figures.
- The figures are taken from Avinor's traffic database.
- Week 1 2019 include numbers from 2018 (31/12 2018)
Week 1 2020 include numbers from 2019 (30-31/12 2019)
Week 52 2021 include numbers from 2022 (1-2/1 2022)
Week 52 2022 include numbers from 2023 (1/1 2023)

Top 10 airports, total week 11

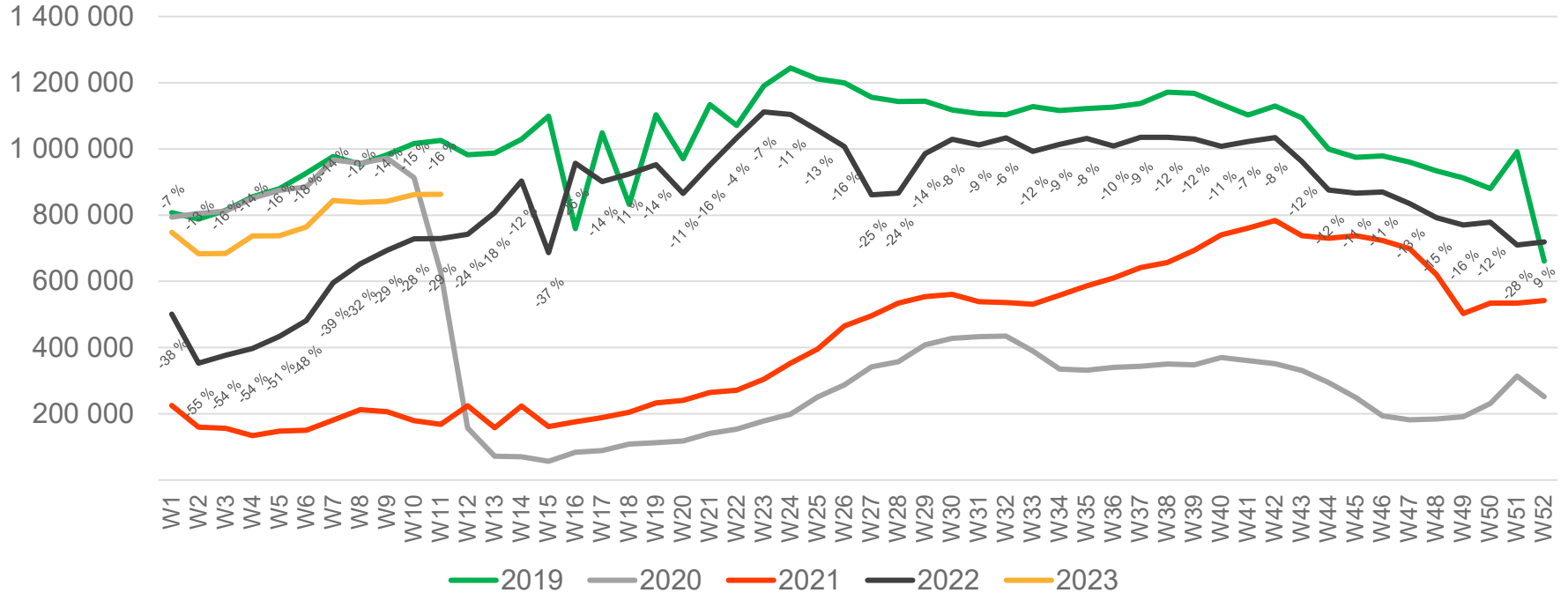
Airport	2019	2020	2021	2022	2023	2023 vs. 2019		2023 vs. 2022	
						Change	Change %	Change	Change %
Oslo/Gardermoen	534 350	311 270	54 427	349 102	436 928	-97 422	-18 %	87 826	25 %
Bergen/Flesland	115 169	73 022	28 362	95 107	105 377	-9 792	-9 %	10 270	11 %
Trondheim/Værnes	88 051	54 102	15 928	66 846	74 442	-13 609	-15 %	7 596	11 %
Stavanger/Sola	79 077	43 859	13 678	53 847	66 173	-12 904	-16 %	12 326	23 %
Tromsø/Langnes	49 665	35 984	13 307	41 418	45 678	-3 987	-8 %	4 260	10 %
Bodø	35 156	25 483	8 962	28 739	31 223	-3 933	-11 %	2 484	9 %
Ålesund/Vigra	21 407	12 678	3 860	15 708	17 892	-3 515	-16 %	2 184	14 %
Kristiansand/Kjevik	20 403	12 014	3 157	11 908	14 909	-5 494	-27 %	3 001	25 %
Harstad/Narvik/Evenes	14 580	11 120	3 442	13 100	14 709	129	1 %	1 609	12 %
Bardufoss	4 070	2 563	1 567	3 334	3 826	-244	-6 %	492	15 %

Passengers Avinor total per day, week 11



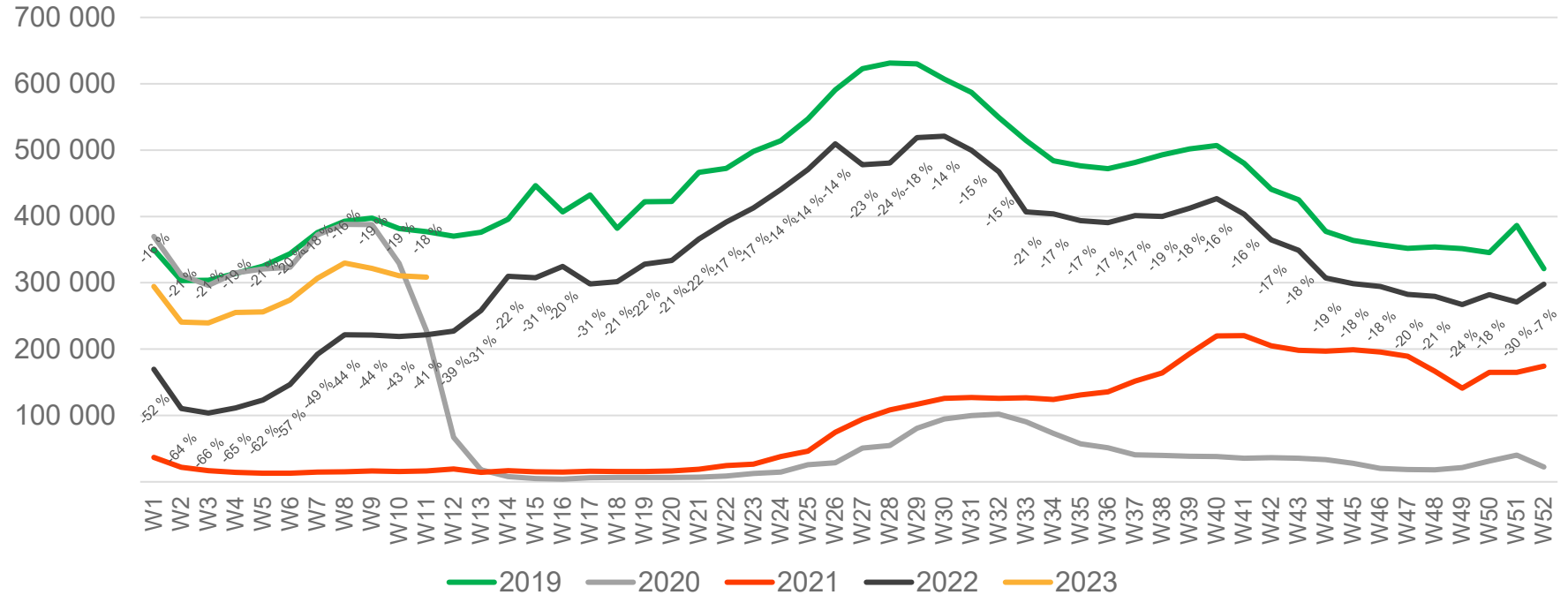
The change is measured from 2019.

Passengers Avinor total per week



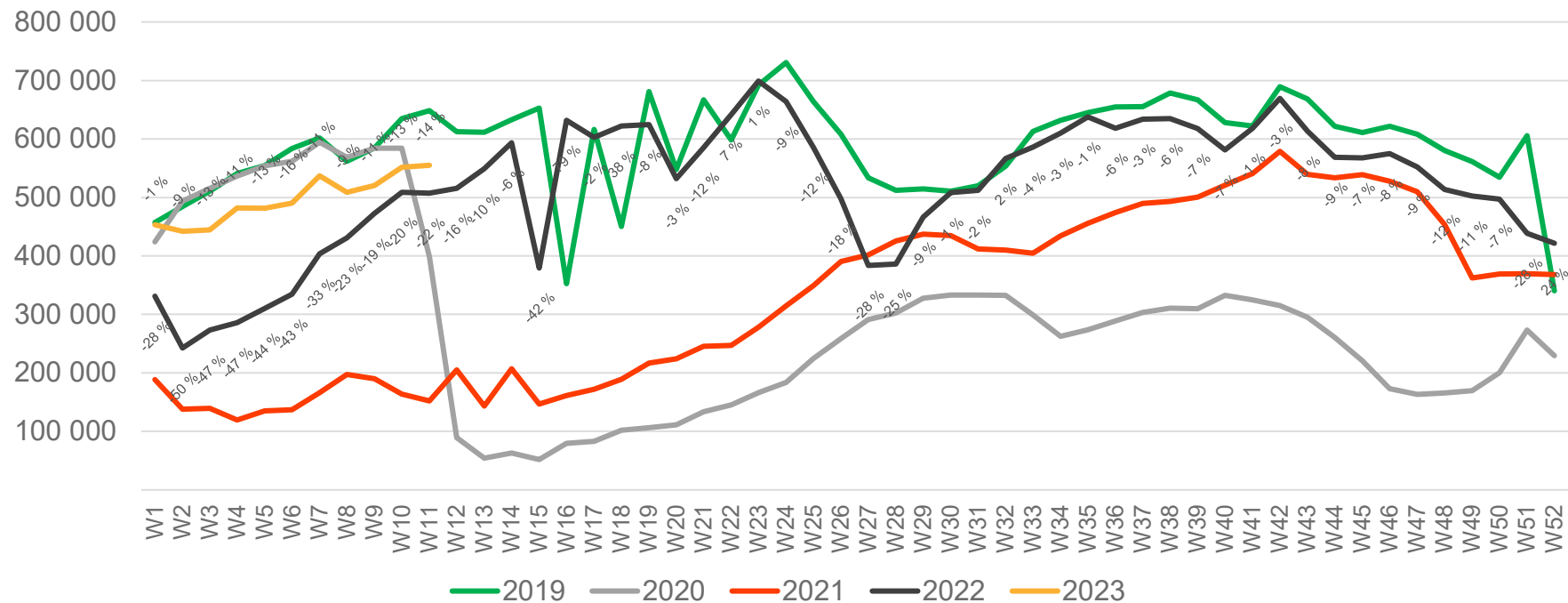
• Week 1 2019 is 31/12-18 – 6/1-19. week 1 2020 is 30/12-19 – 5/1-20. Week 52 2021 is 27/12-21 – 2/1-22. Week 52 2022 is 26/12-22 – 1/1-23.

Passengers Avinor international per week



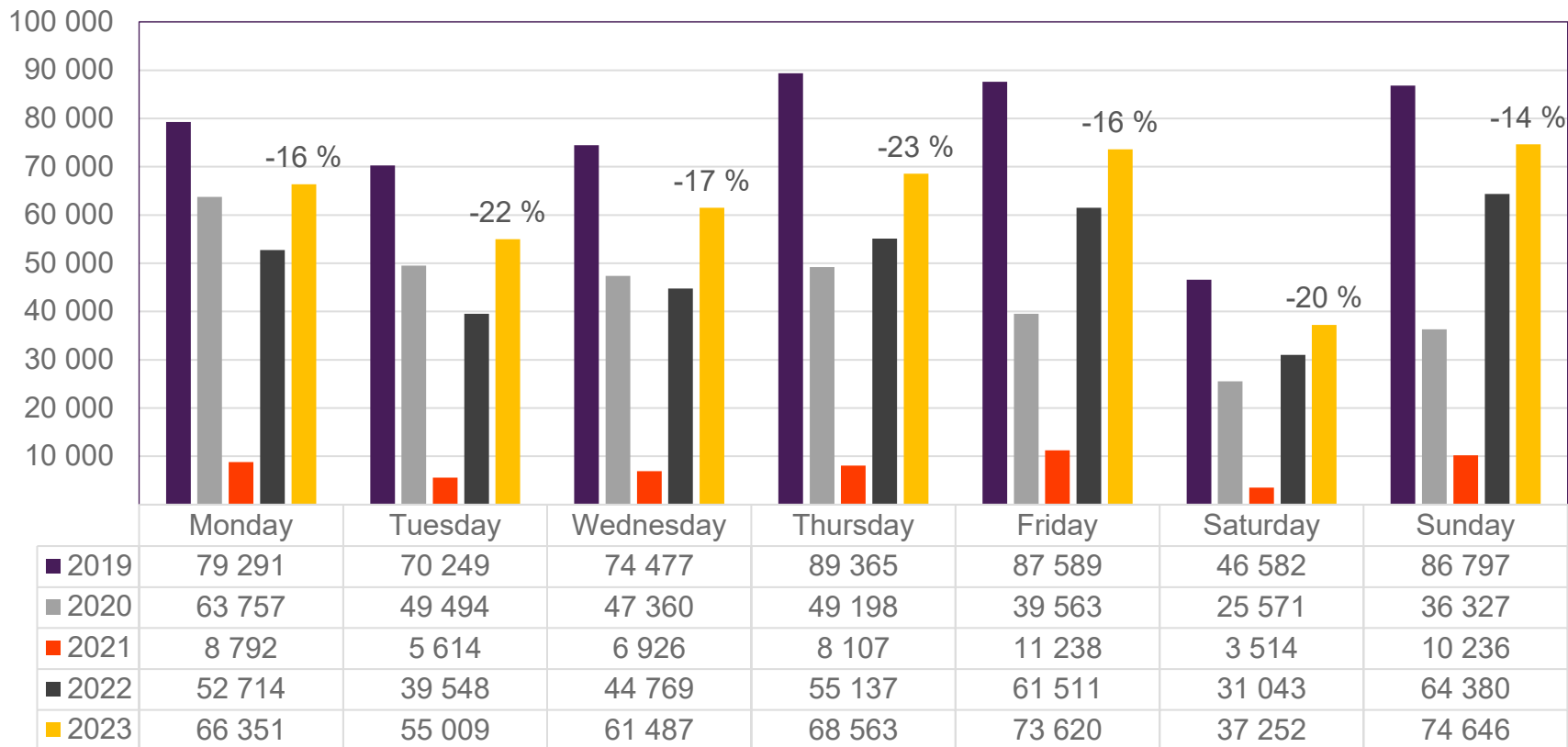
• Week 1 2019 is 31/12-18 – 6/1-19. week 1 2020 is 30/12-19 – 5/1-20. Week 52 2021 is 27/12-21 – 2/1-22. Week 52 2022 is 26/12-22 – 1/1-23.

Passengers Avinor domestic per week



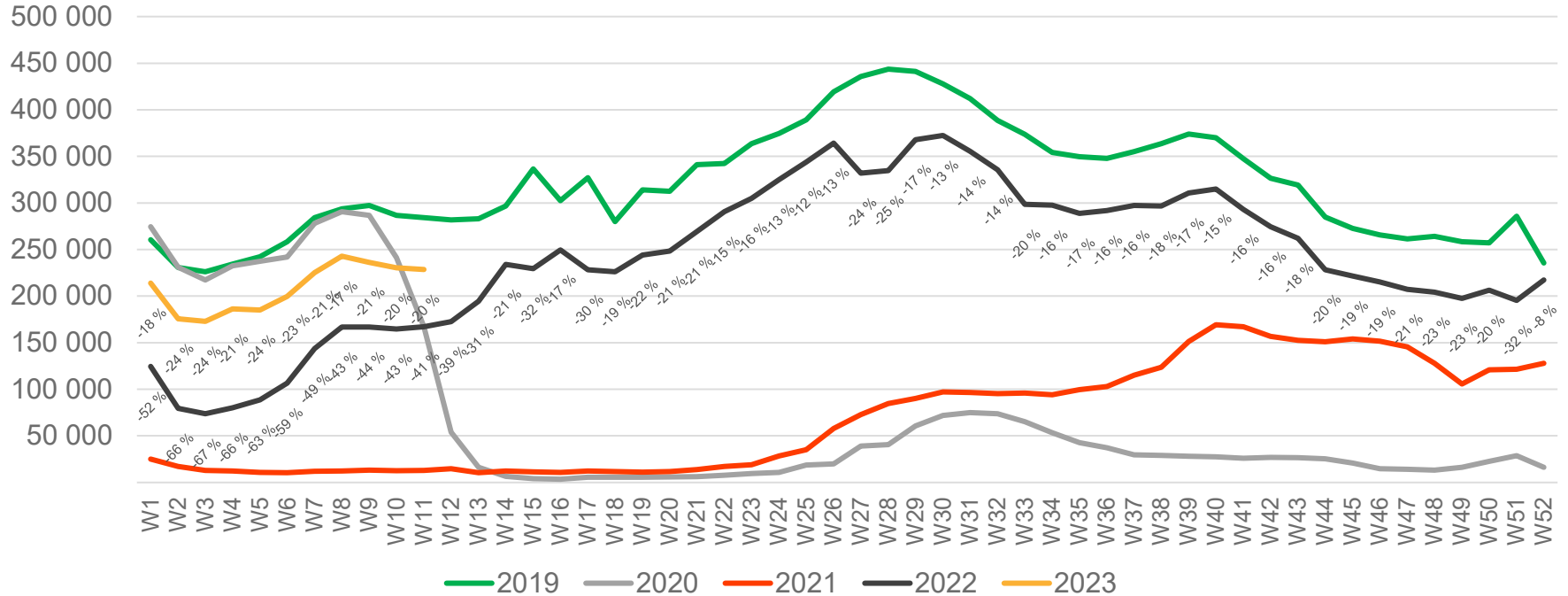
• Week 1 2019 is 31/12-18 – 6/1-19. week 1 2020 is 30/12-19 – 5/1-20. Week 52 2021 is 27/12-21 – 2/1-22. Week 52 2022 is 26/12-22 – 1/1-23.

Passengers OSL total per day, week 11



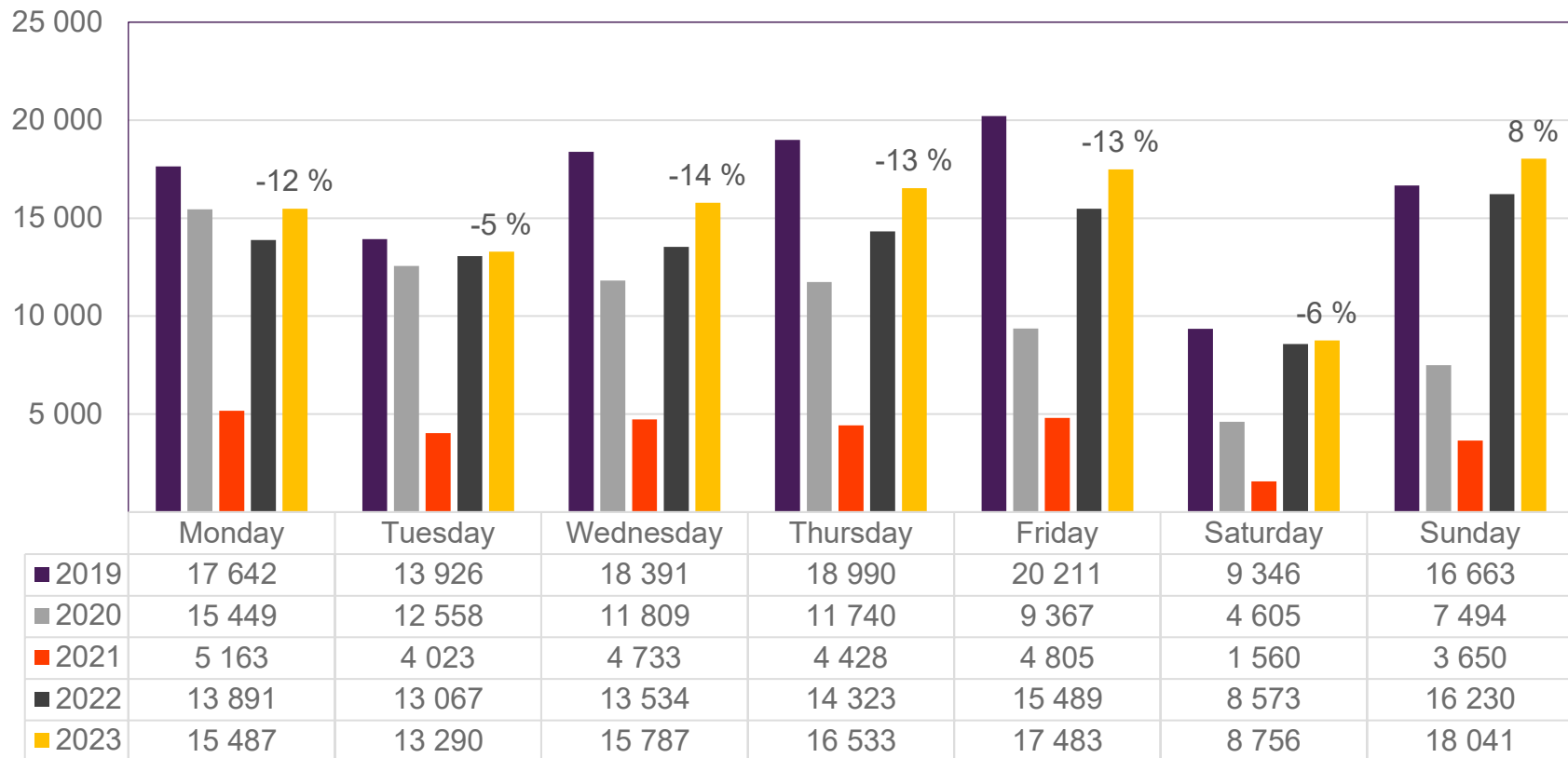
The change is measured from 2019.

Passengers OSL international per week



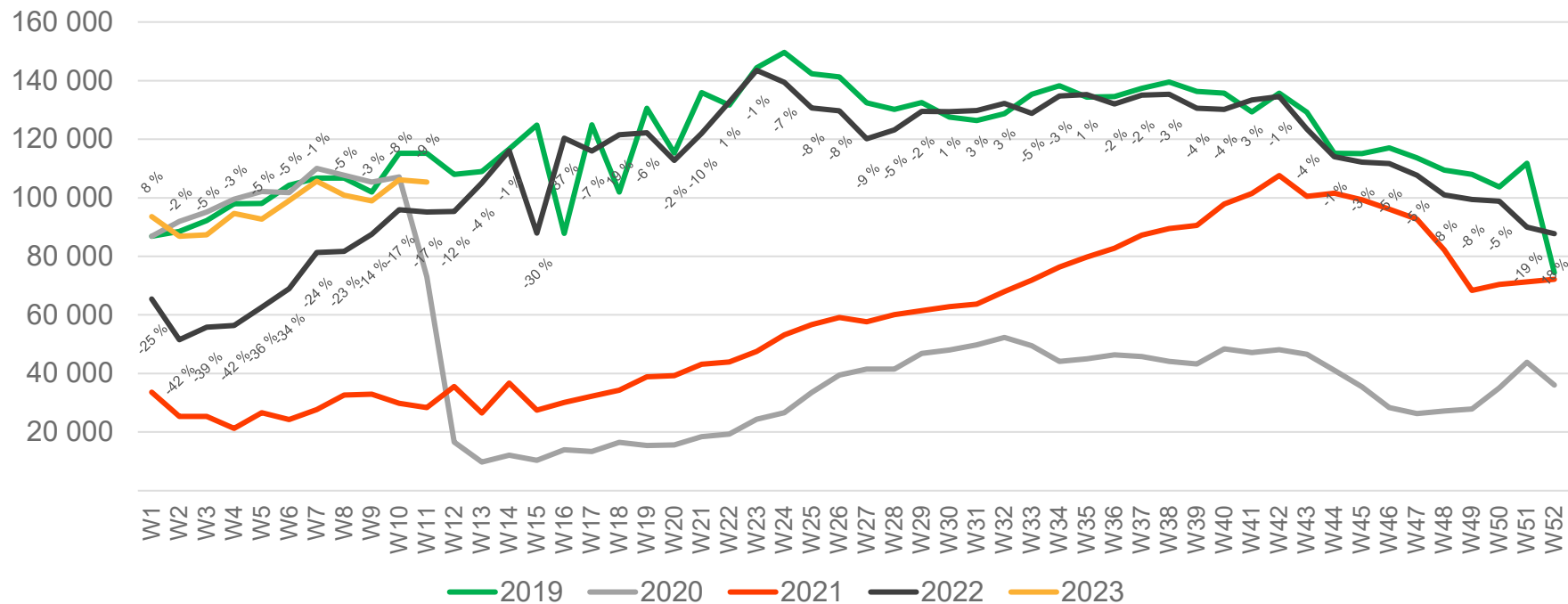
• Week 1 2019 is 31/12-18 – 6/1-19. week 1 2020 is 30/12-19 – 5/1-20. Week 52 2021 is 27/12-21 – 2/1-22. Week 52 2022 is 26/12-22 – 1/1-23.

Passengers BGO total per day, week 11



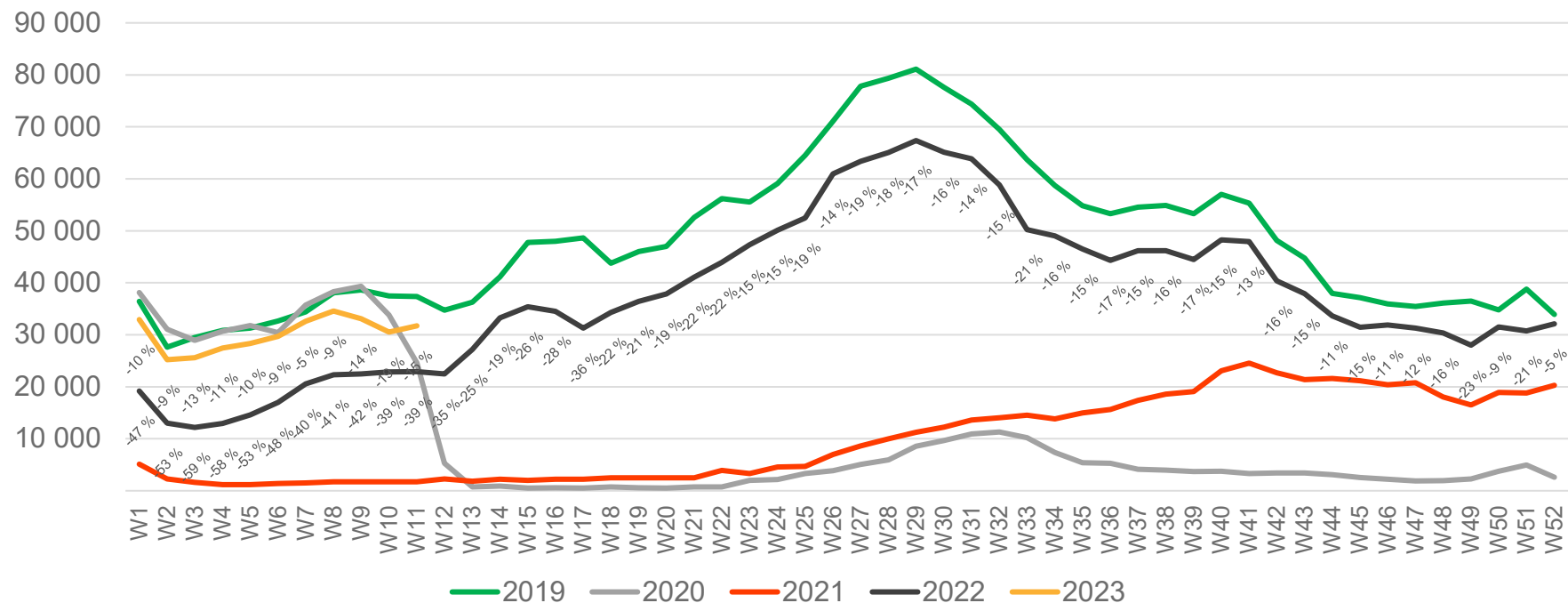
The change is measured from 2019.

Passengers BGO total per week



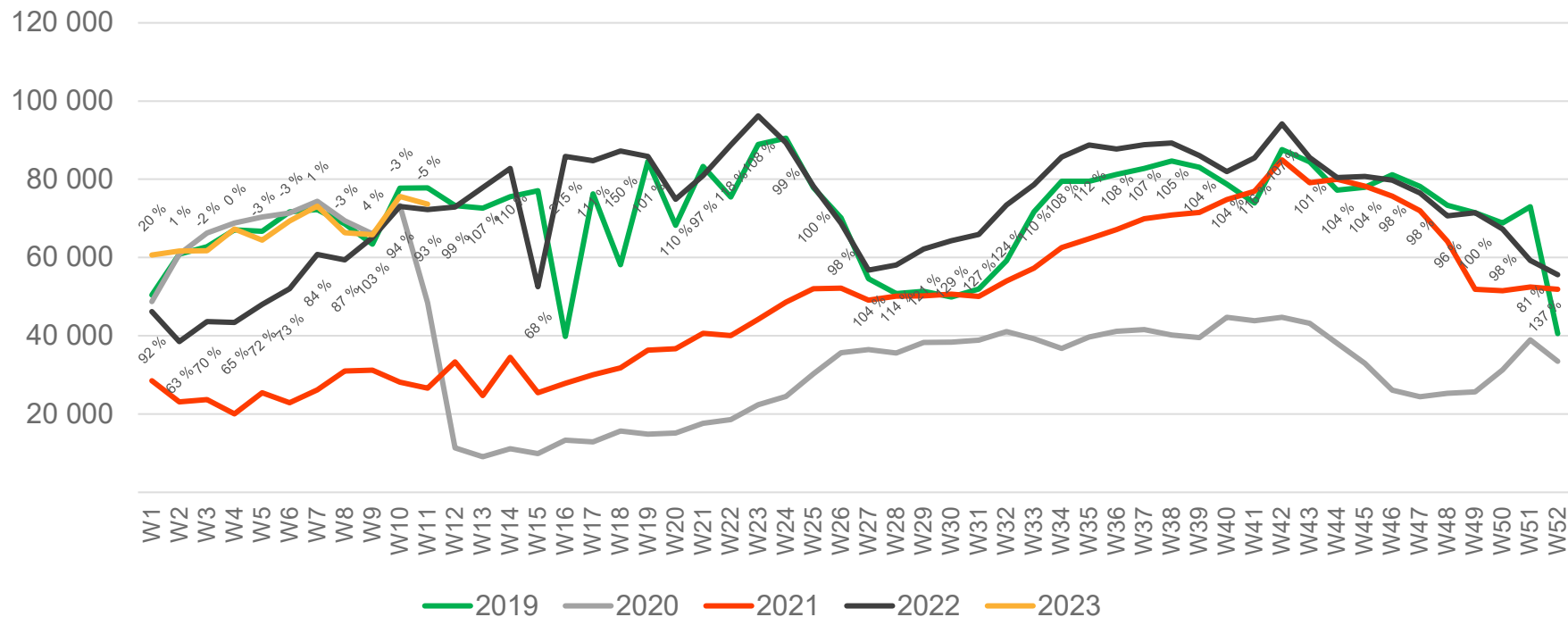
• Week 1 2019 is 31/12-18 – 6/1-19. week 1 2020 is 30/12-19 – 5/1-20. Week 52 2021 is 27/12-21 – 2/1-22. Week 52 2022 is 26/12-22 – 1/1-23.

Passengers BGO international per week



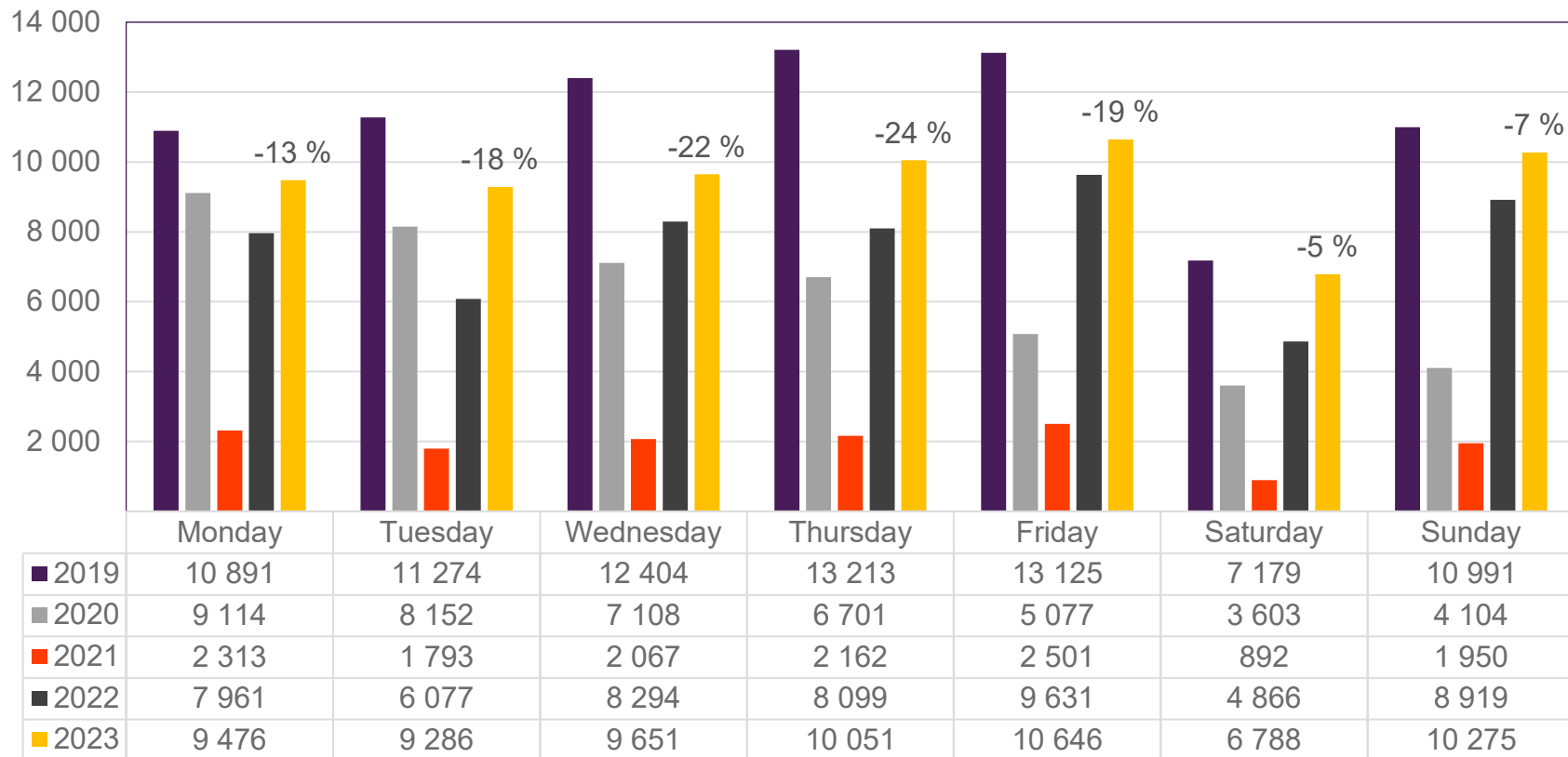
• Week 1 2019 is 31/12-18 – 6/1-19. week 1 2020 is 30/12-19 – 5/1-20. Week 52 2021 is 27/12-21 – 2/1-22. Week 52 2022 is 26/12-22 – 1/1-23.

Passengers BGO domestic per week



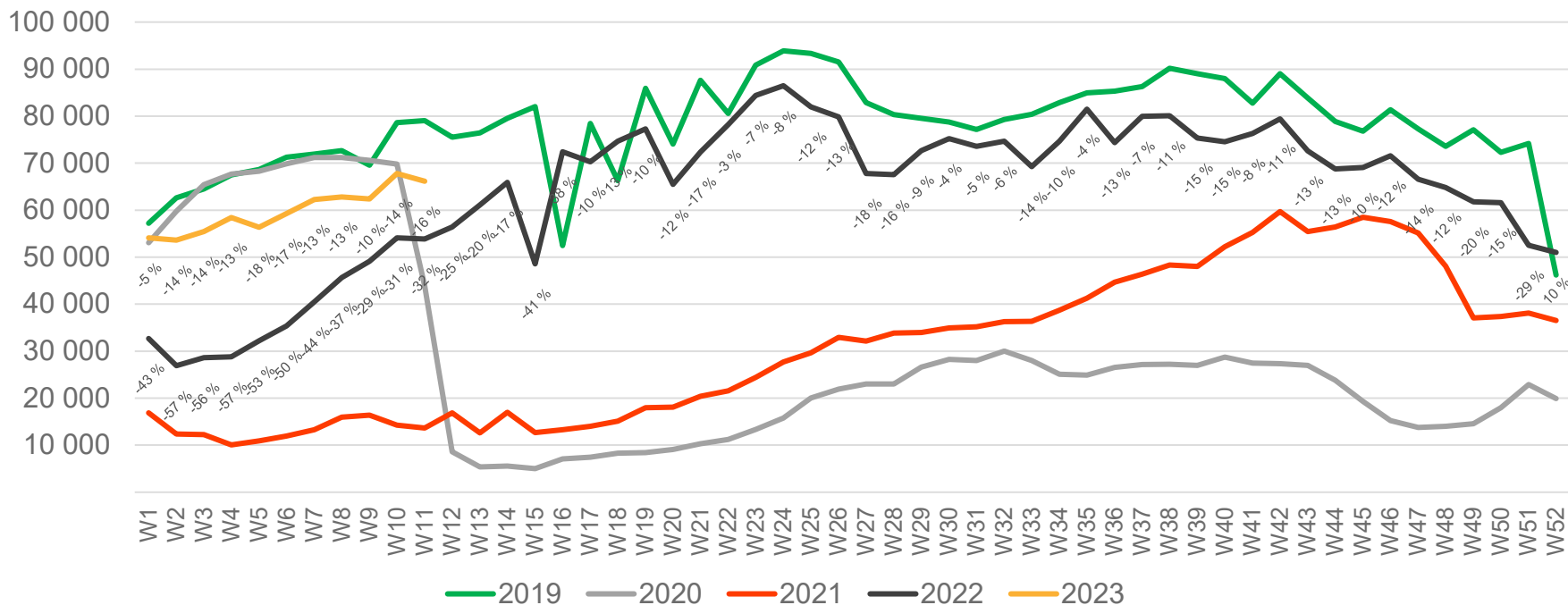
• Week 1 2019 is 31/12-18 – 6/1-19. week 1 2020 is 30/12-19 – 5/1-20. Week 52 2021 is 27/12-21 – 2/1-22. Week 52 2022 is 26/12-22 – 1/1-23.

Passengers SVG total per day, week 11



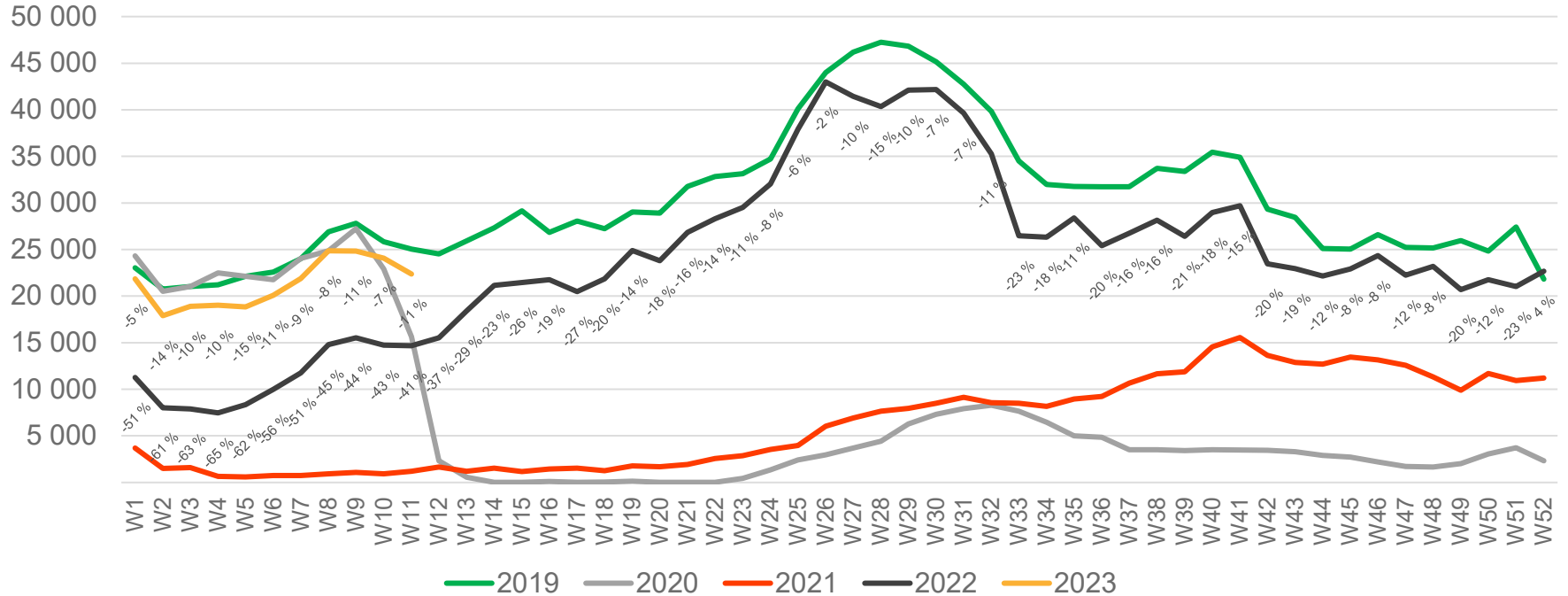
The change is measured from 2019.

Passengers SVG total per week



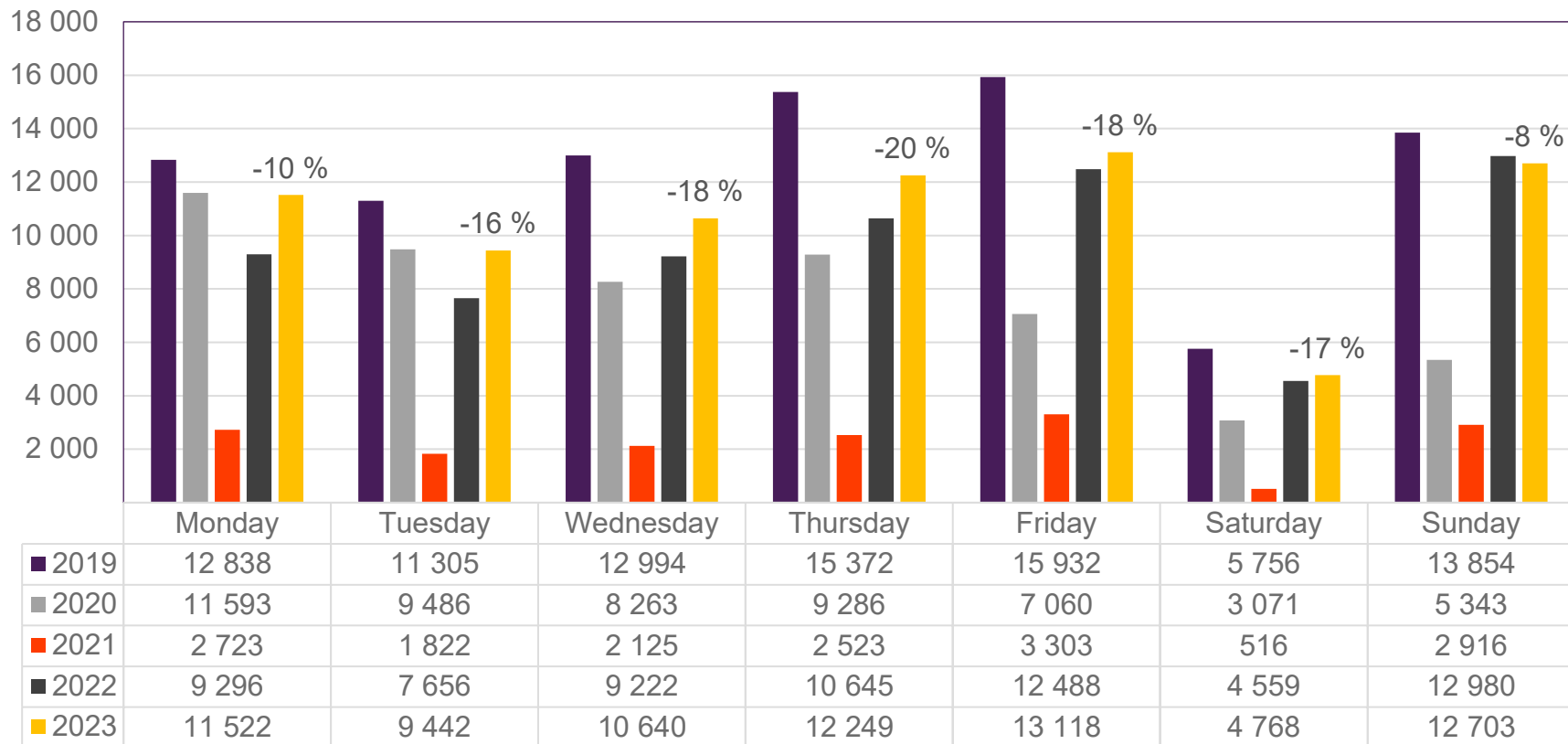
• Week 1 2019 is 31/12-18 – 6/1-19. week 1 2020 is 30/12-19 – 5/1-20. Week 52 2021 is 27/12-21 – 2/1-22. Week 52 2022 is 26/12-22 – 1/1-23.

Passengers SVG international per week



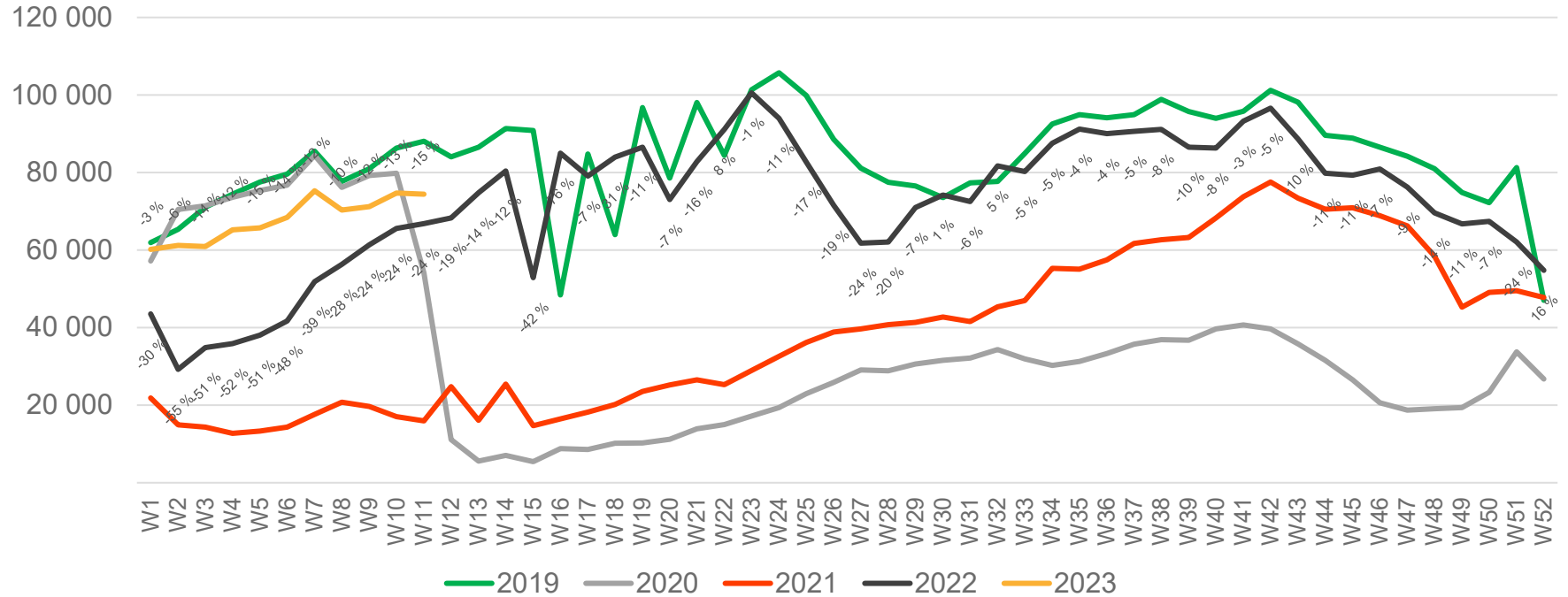
• Week 1 2019 is 31/12-18 – 6/1-19. week 1 2020 is 30/12-19 – 5/1-20. Week 52 2021 is 27/12-21 – 2/1-22. Week 52 2022 is 26/12-22 – 1/1-23.

Passengers TRD total per day, week 11



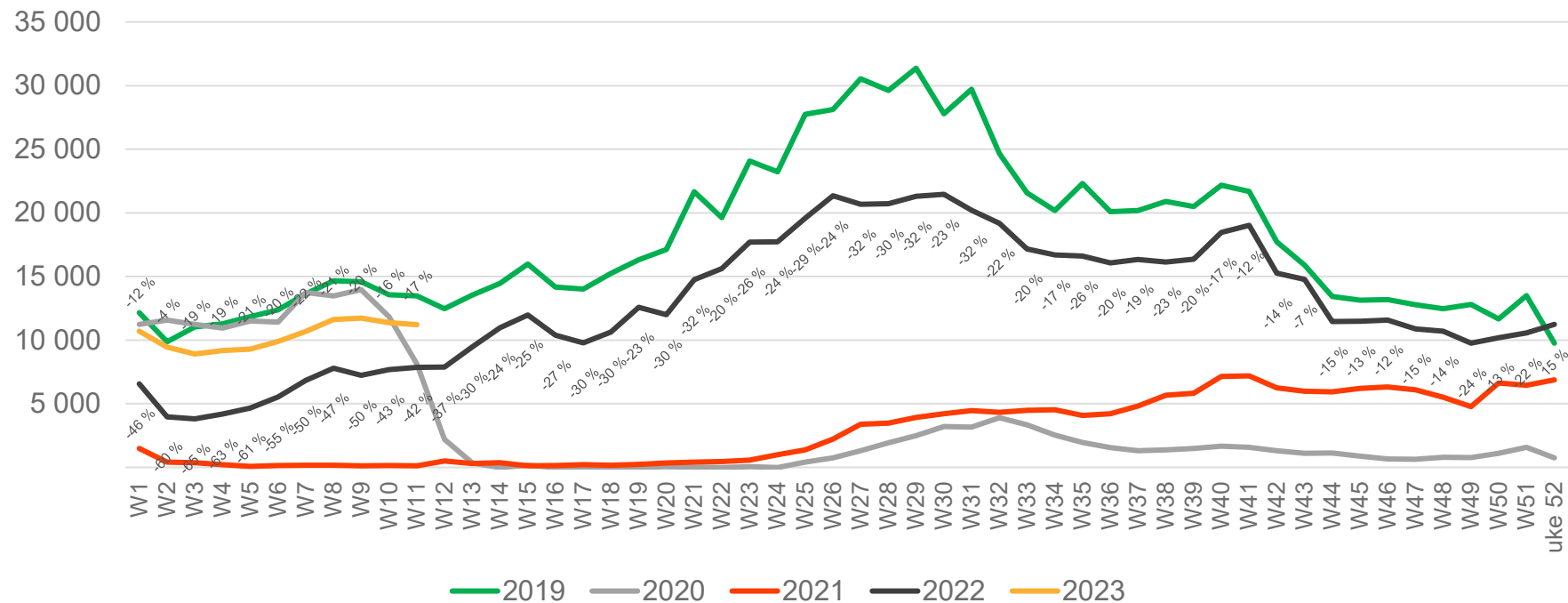
The change is measured from 2019.

Passengers TRD total per week



• Week 1 2019 is 31/12-18 – 6/1-19. week 1 2020 is 30/12-19 – 5/1-20. Week 52 2021 is 27/12-21 – 2/1-22. Week 52 2022 is 26/12-22 – 1/1-23.

Passengers TRD international per week



• Week 1 2019 is 31/12-18 – 6/1-19. week 1 2020 is 30/12-19 – 5/1-20. Week 52 2021 is 27/12-21 – 2/1-22. Week 52 2022 is 26/12-22 – 1/1-23.

