



Passenger numbers per week

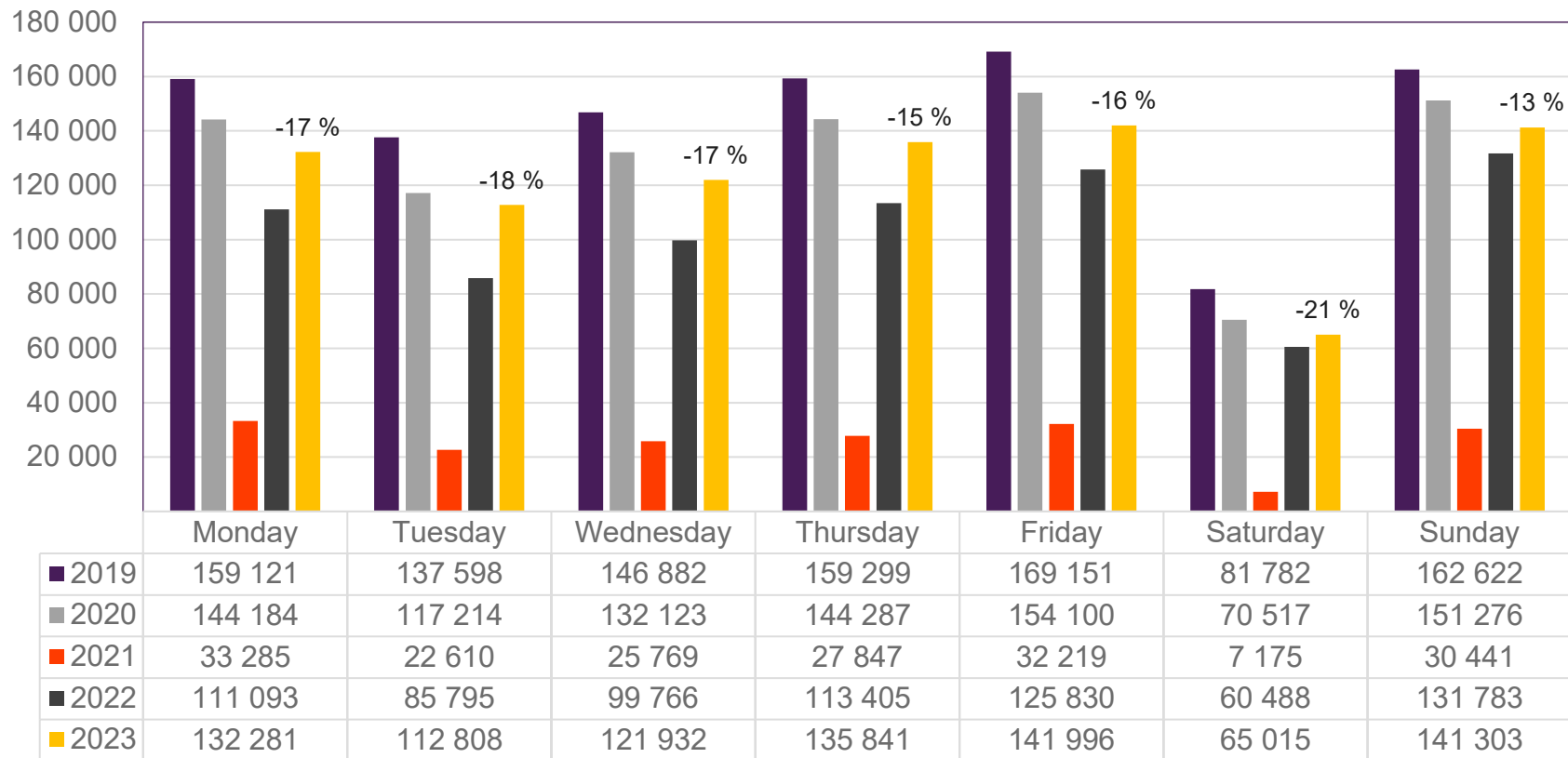
## Preliminary figures

- The figures for the previous week are preliminary. It takes some time for all passenger numbers to be reported, so the figures for the previous week may be 1-2% lower than the final figures.
- The figures are taken from Avinor's traffic database.
- Week 1 2019 include numbers from 2018 (31/12 2018)  
Week 1 2020 include numbers from 2019 (30-31/12 2019)  
Week 52 2021 include numbers from 2022 (1-2/1 2022)  
Week 52 2022 include numbers from 2023 (1/1 2023)

# Top 10 airports, total week 10

Airport	2019	2020	2021	2022	2023	2023 vs. 2019		2023 vs. 2022	
						Change	Change %	Change	Change %
Oslo/Gardermoen	532 758	463 996	58 790	349 281	430 263	-102 495	-19 %	80 982	23 %
Bergen/Flesland	115 181	107 076	29 854	95 891	104 509	-10 672	-9 %	8 618	9 %
Trondheim/Værnes	86 327	79 812	17 006	65 595	74 507	-11 820	-14 %	8 912	14 %
Stavanger/Sola	78 618	69 807	14 260	54 121	67 102	-11 516	-15 %	12 981	24 %
Tromsø/Langnes	50 176	49 375	14 125	43 744	43 867	-6 309	-13 %	123	0 %
Bodø	32 188	30 871	10 471	27 439	29 975	-2 213	-7 %	2 536	9 %
Ålesund/Vigra	21 594	19 502	4 036	15 235	17 417	-4 177	-19 %	2 182	14 %
Kristiansand/Kjevik	20 171	17 270	3 182	11 547	14 692	-5 479	-27 %	3 145	27 %
Harstad/Narvik/Evenes	14 904	14 765	3 946	13 044	13 894	-1 010	-7 %	850	7 %
Bardufoss	4 867	4 827	1 314	3 386	3 742	-1 125	-23 %	356	11 %

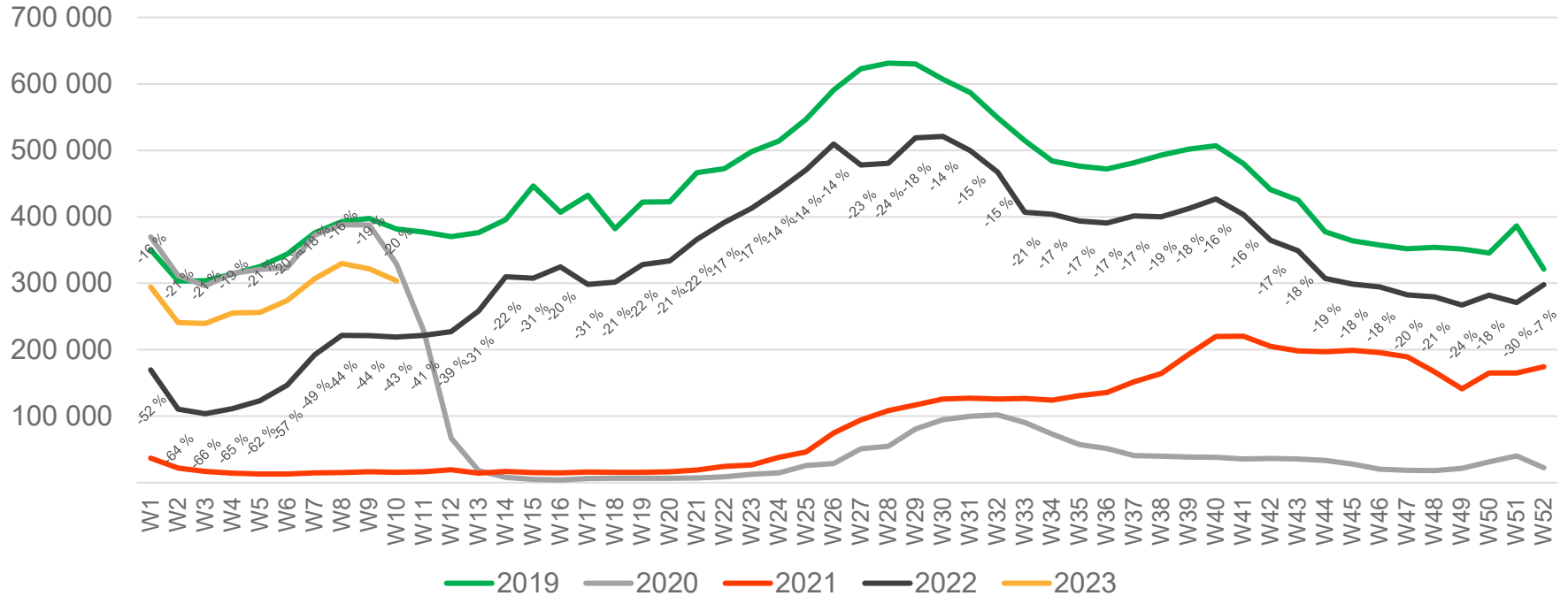
# Passengers Avinor total per day, week 10



The change is measured from 2019.

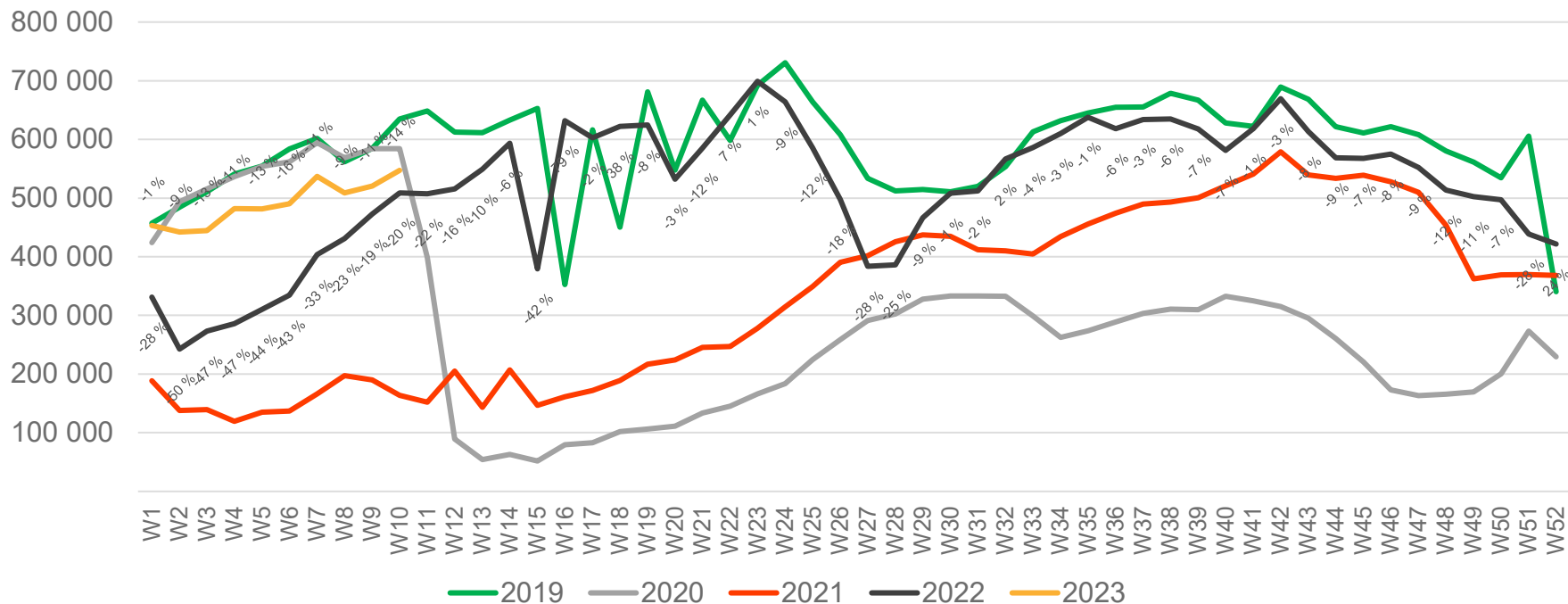


# Passengers Avinor international per week



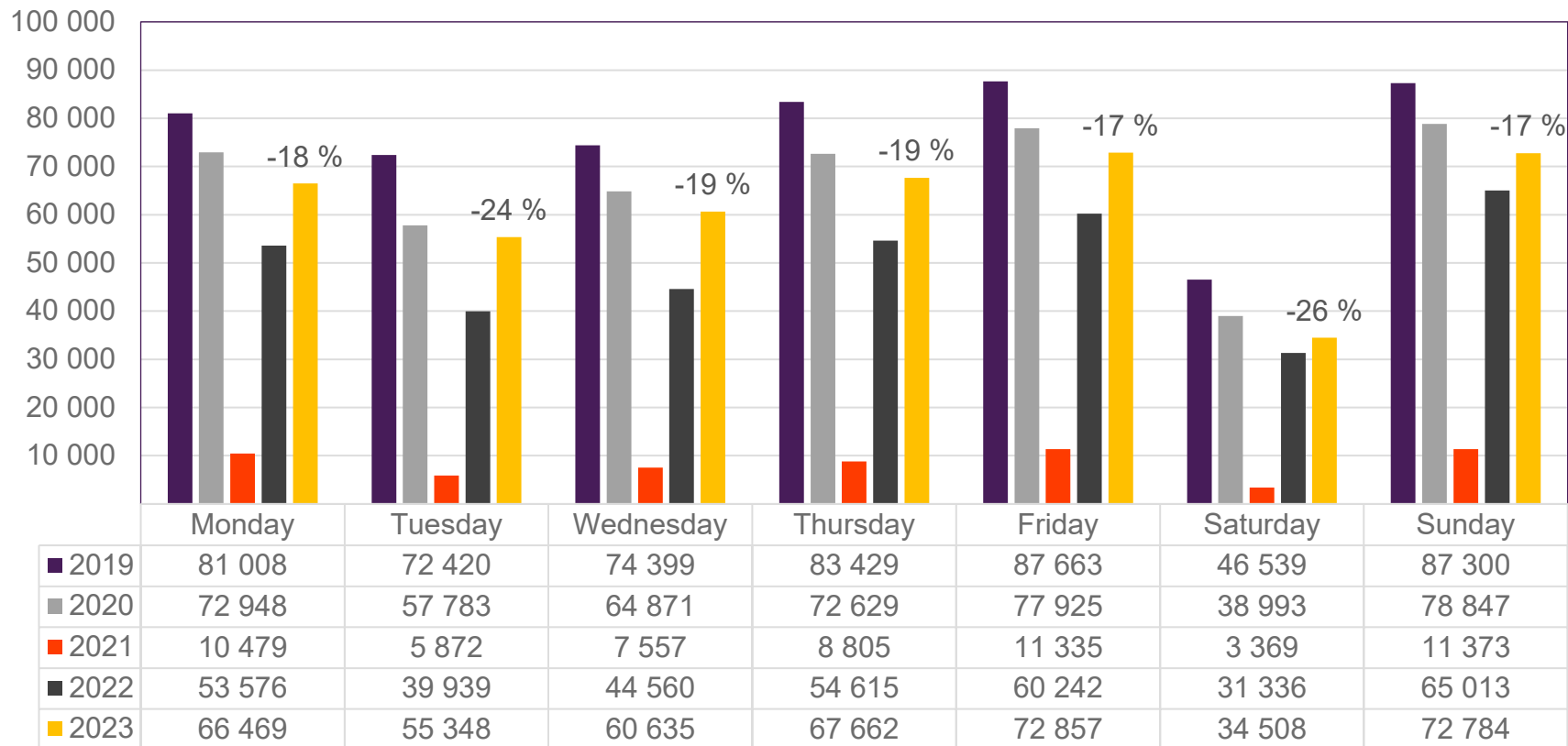
• Week 1 2019 is 31/12-18 – 6/1-19. week 1 2020 is 30/12-19 – 5/1-20. Week 52 2021 is 27/12-21 – 2/1-22. Week 52 2022 is 26/12-22 – 1/1-23.

# Passengers Avinor domestic per week



• Week 1 2019 is 31/12-18 – 6/1-19. week 1 2020 is 30/12-19 – 5/1-20. Week 52 2021 is 27/12-21 – 2/1-22. Week 52 2022 is 26/12-22 – 1/1-23.

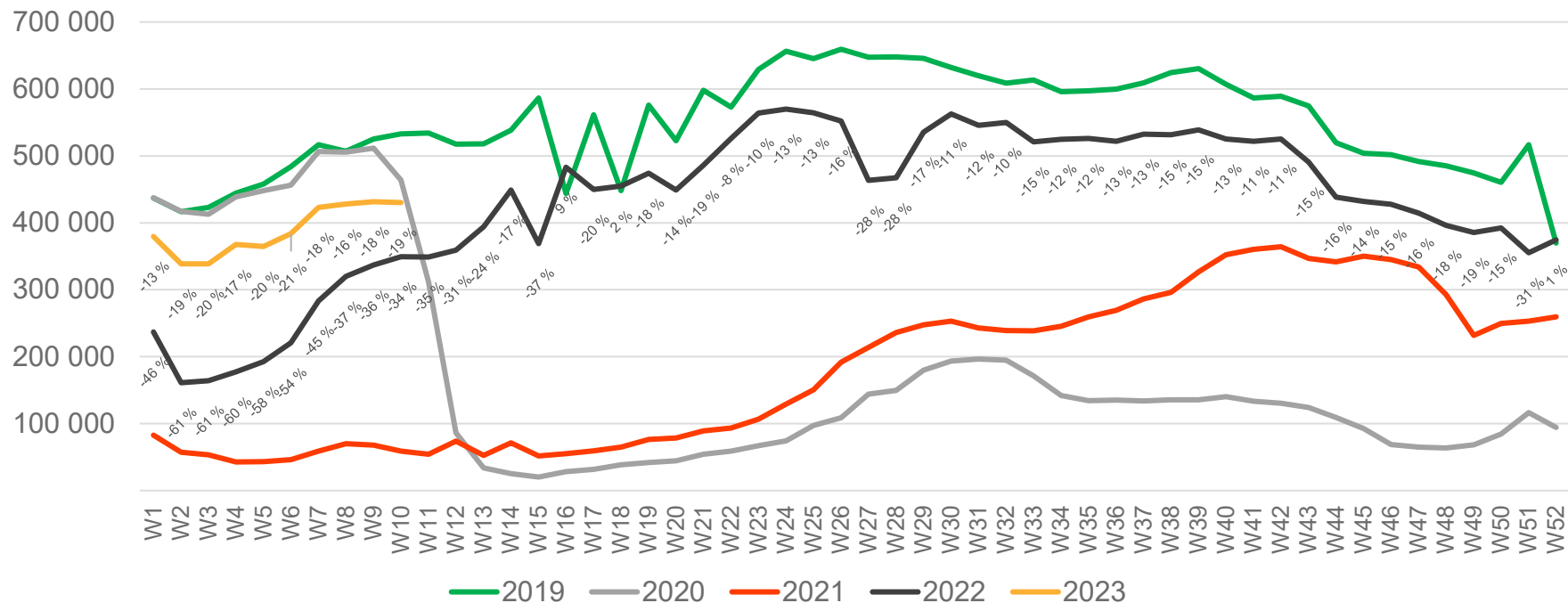
# Passengers OSL total per day, week 10



The change is measured from 2019.

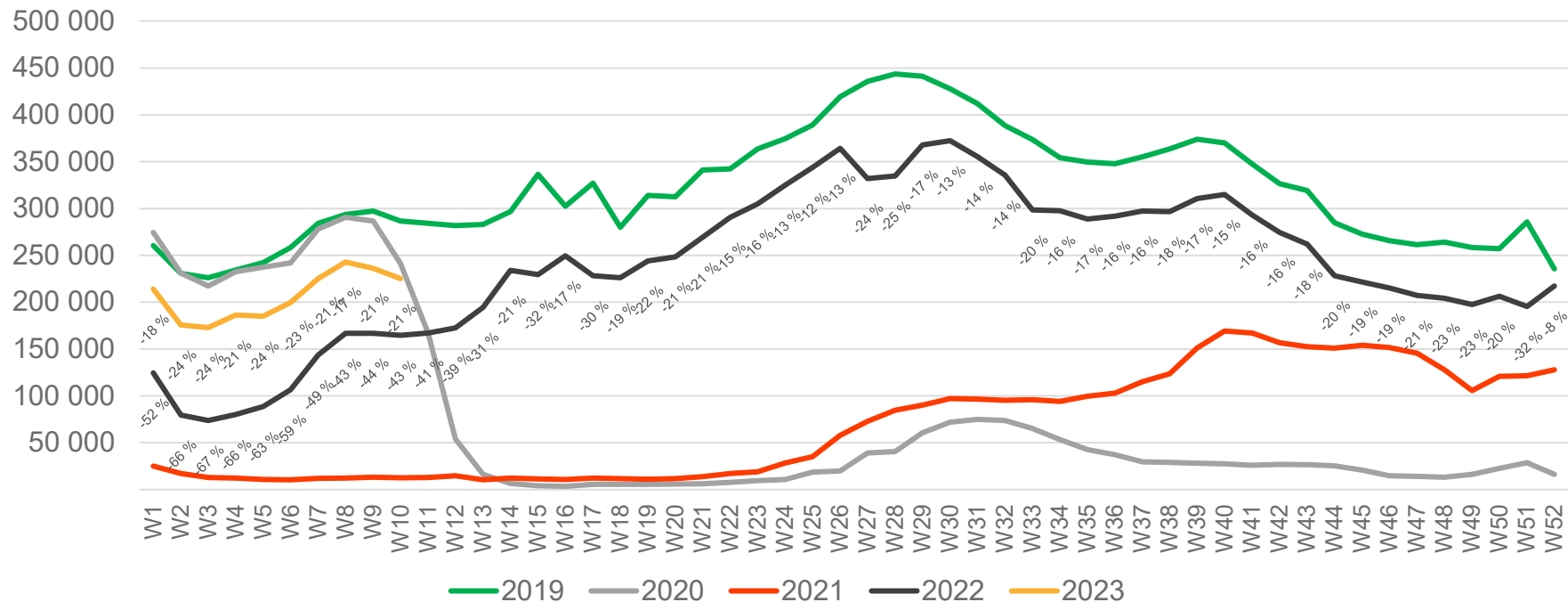


# Passengers OSL total per week



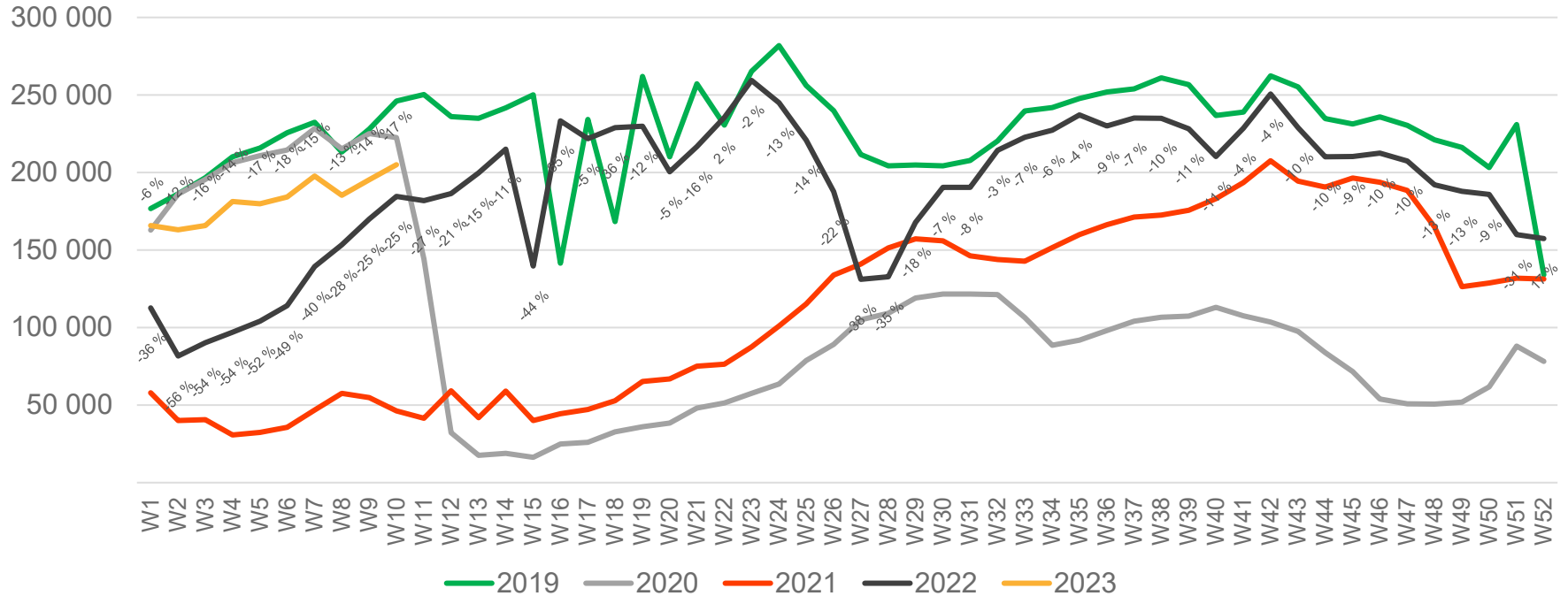
• Week 1 2019 is 31/12-18 – 6/1-19. week 1 2020 is 30/12-19 – 5/1-20. Week 52 2021 is 27/12-21 – 2/1-22. Week 52 2022 is 26/12-22 – 1/1-23.

# Passengers OSL international per week



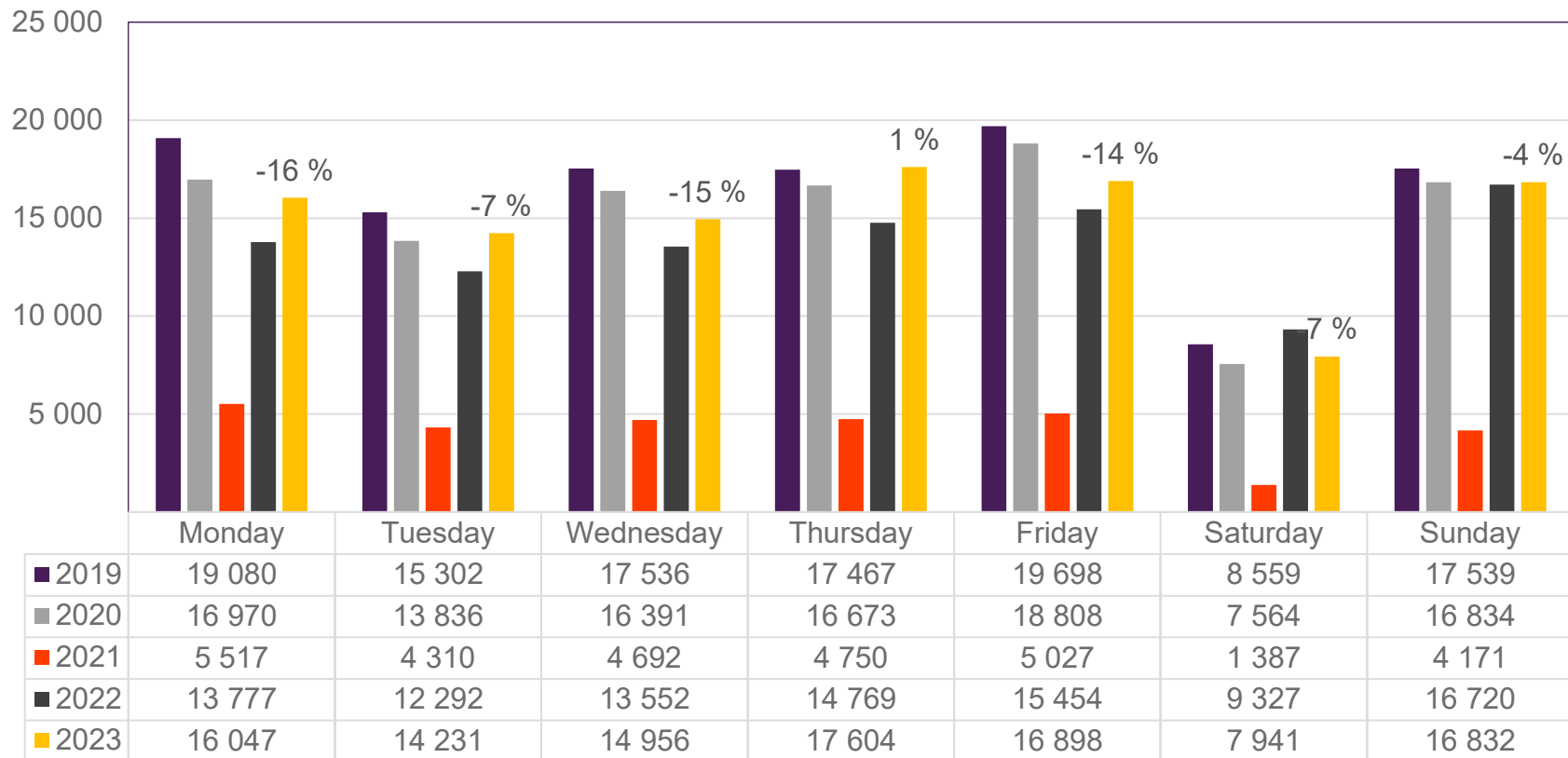
• Week 1 2019 is 31/12-18 – 6/1-19. week 1 2020 is 30/12-19 – 5/1-20. Week 52 2021 is 27/12-21 – 2/1-22. Week 52 2022 is 26/12-22 – 1/1-23.

# Passengers OSL domestic per week



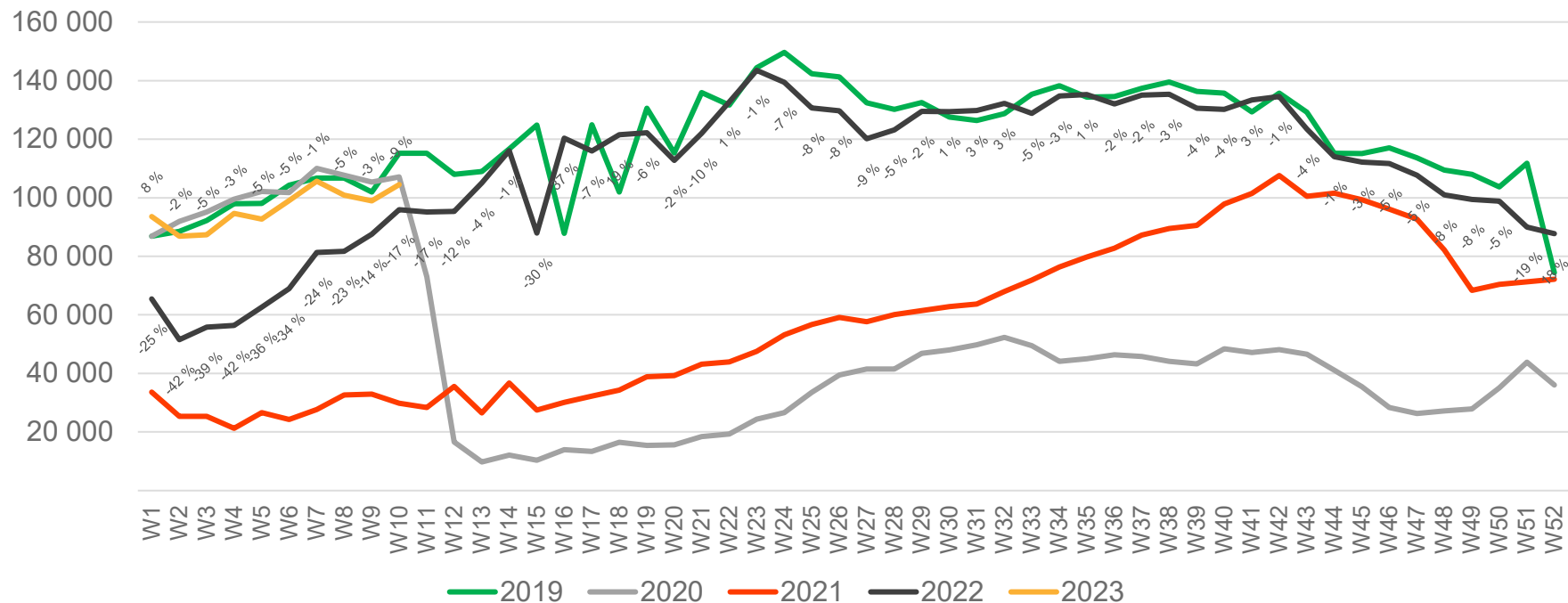
• Week 1 2019 is 31/12-18 – 6/1-19. week 1 2020 is 30/12-19 – 5/1-20. Week 52 2021 is 27/12-21 – 2/1-22. Week 52 2022 is 26/12-22 – 1/1-23.

# Passengers BGO total per day, week 10



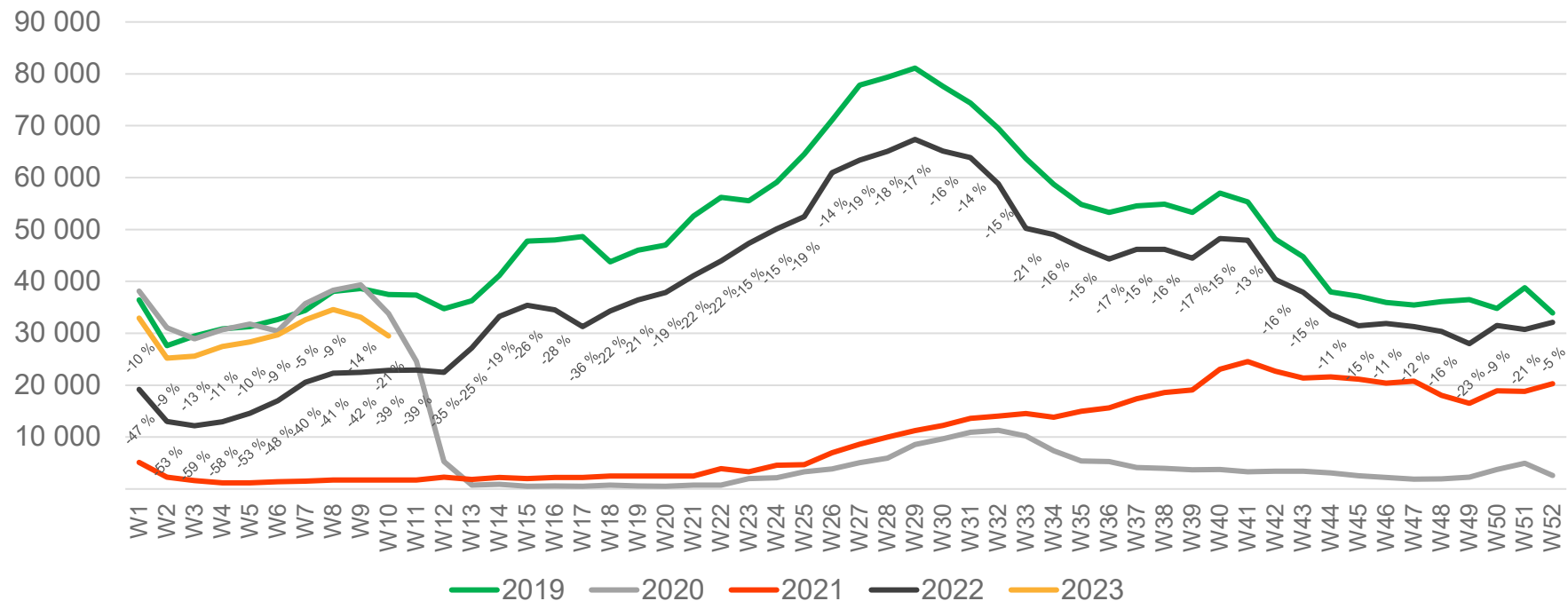
The change is measured from 2019.

# Passengers BGO total per week



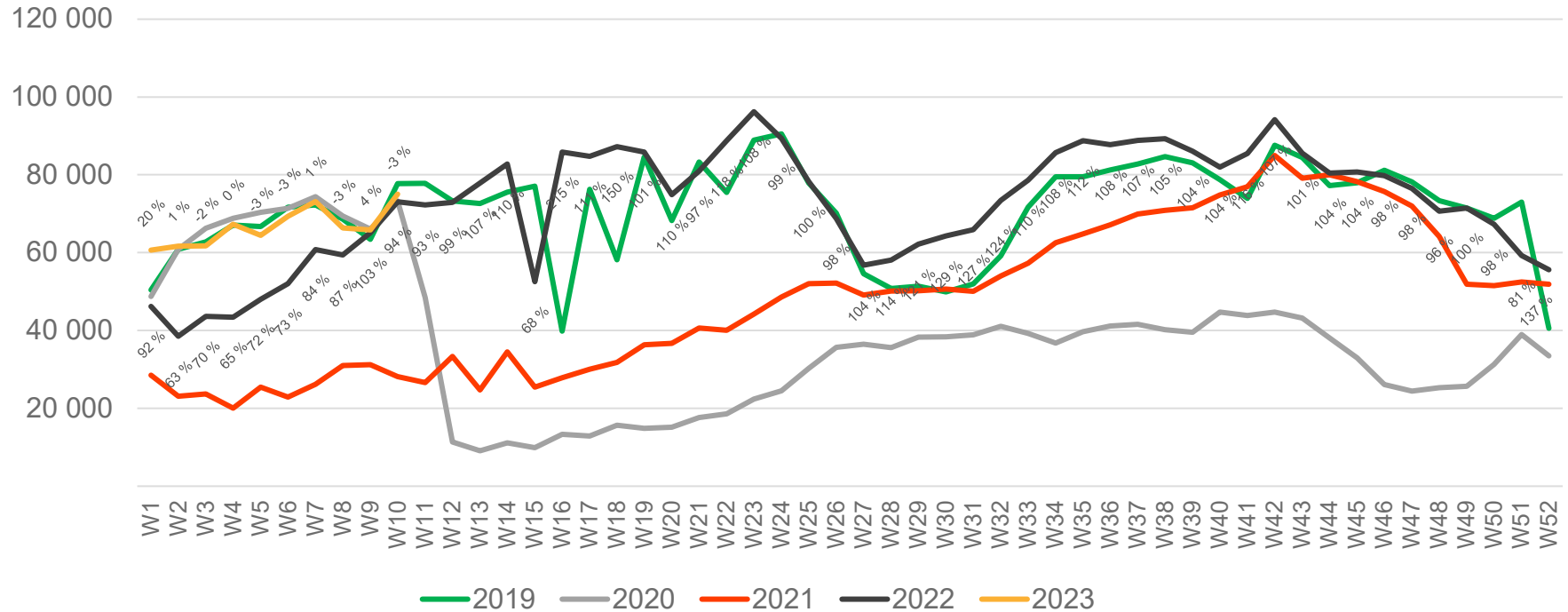
• Week 1 2019 is 31/12-18 – 6/1-19. week 1 2020 is 30/12-19 – 5/1-20. Week 52 2021 is 27/12-21 – 2/1-22. Week 52 2022 is 26/12-22 – 1/1-23.

# Passengers BGO international per week



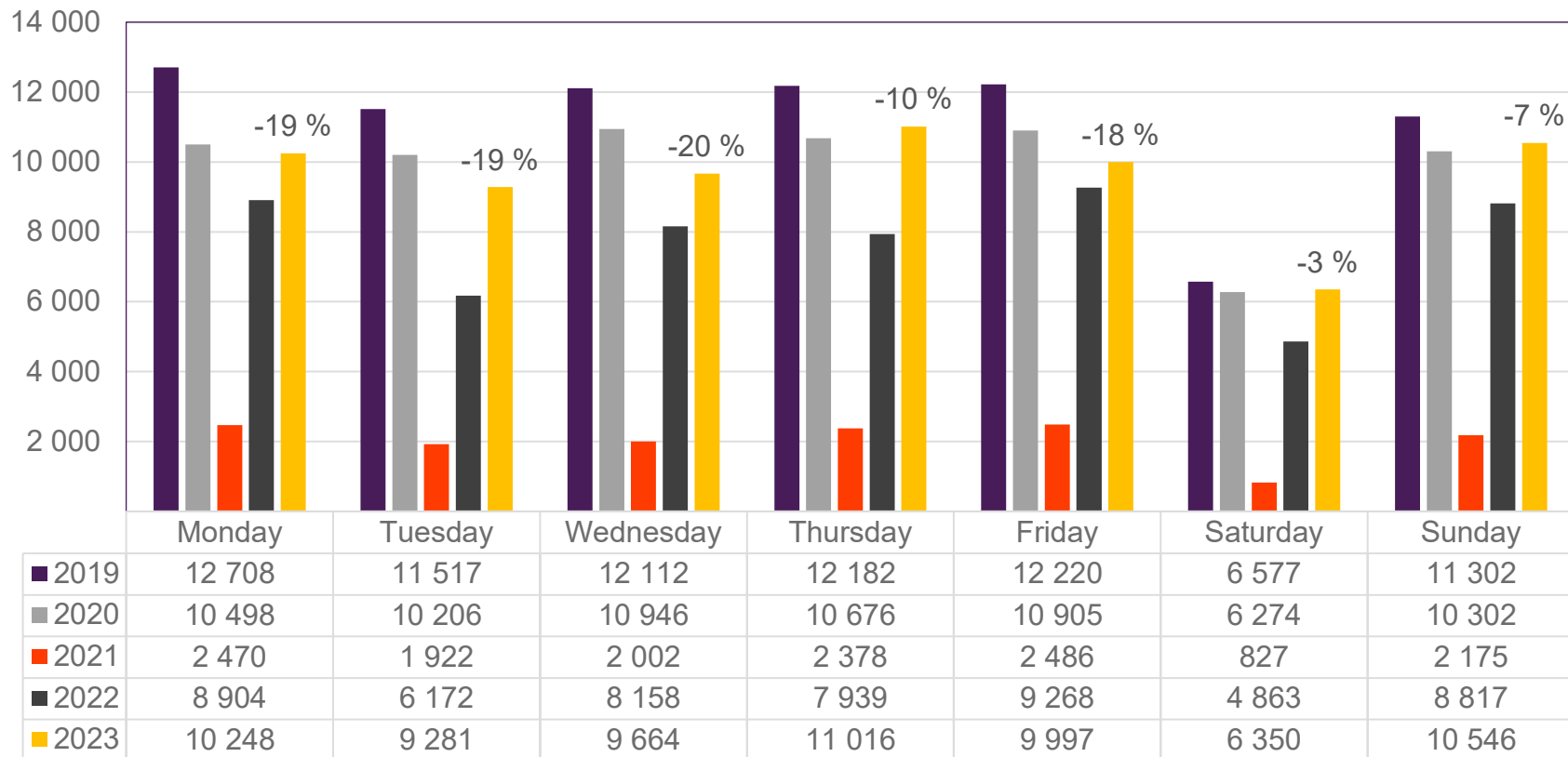
• Week 1 2019 is 31/12-18 – 6/1-19. week 1 2020 is 30/12-19 – 5/1-20. Week 52 2021 is 27/12-21 – 2/1-22. Week 52 2022 is 26/12-22 – 1/1-23.

# Passengers BGO domestic per week



• Week 1 2019 is 31/12-18 – 6/1-19. week 1 2020 is 30/12-19 – 5/1-20. Week 52 2021 is 27/12-21 – 2/1-22. Week 52 2022 is 26/12-22 – 1/1-23.

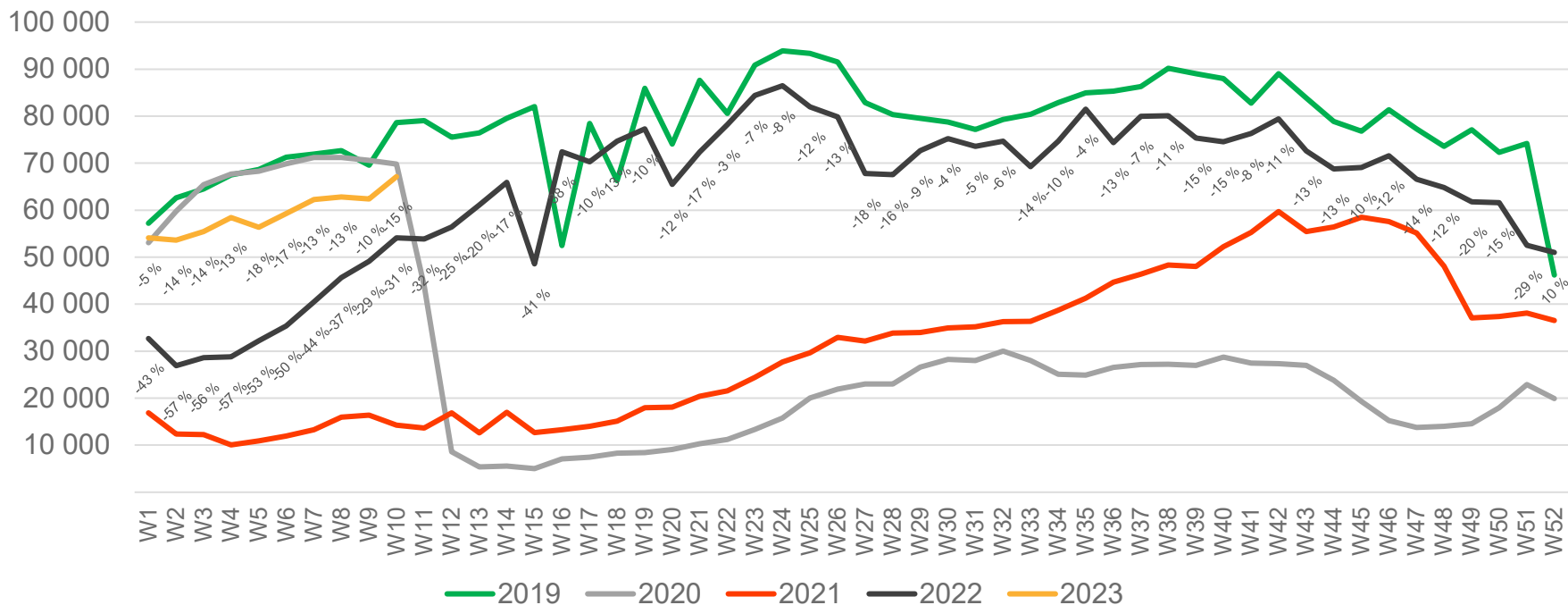
# Passengers SVG total per day, week 10



The change is measured from 2019.

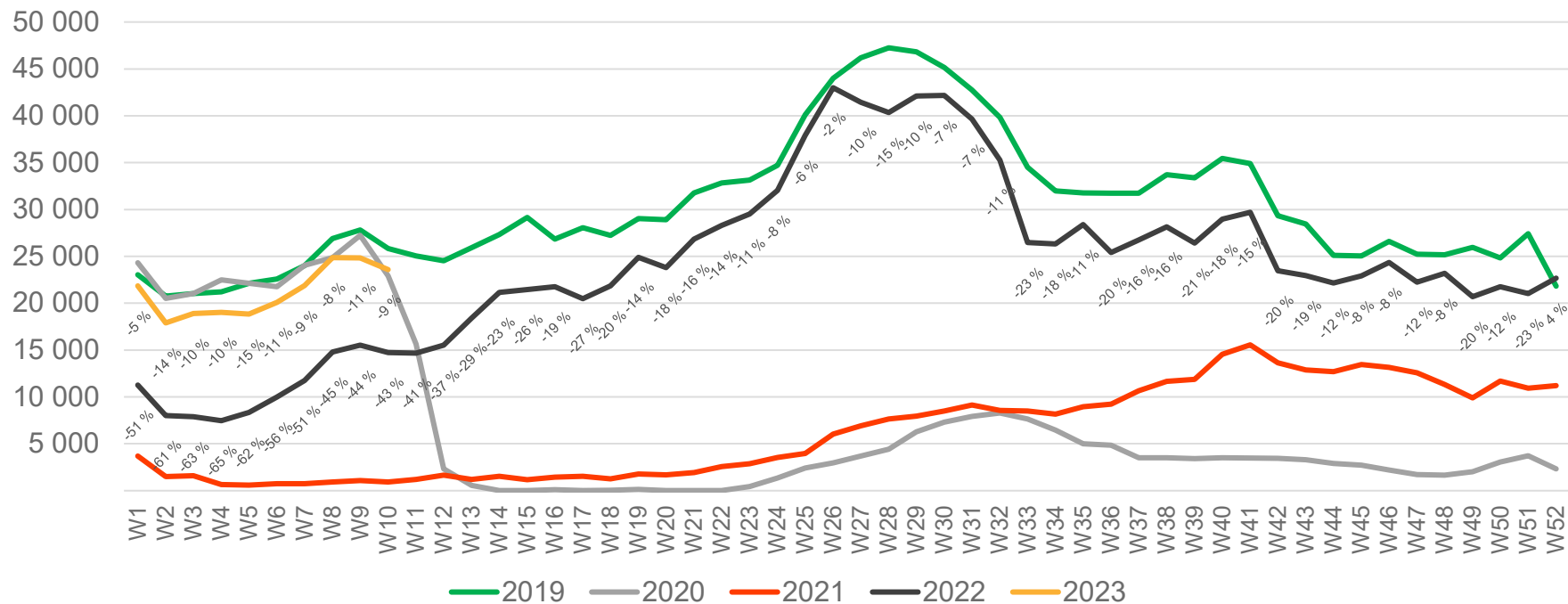


# Passengers SVG total per week



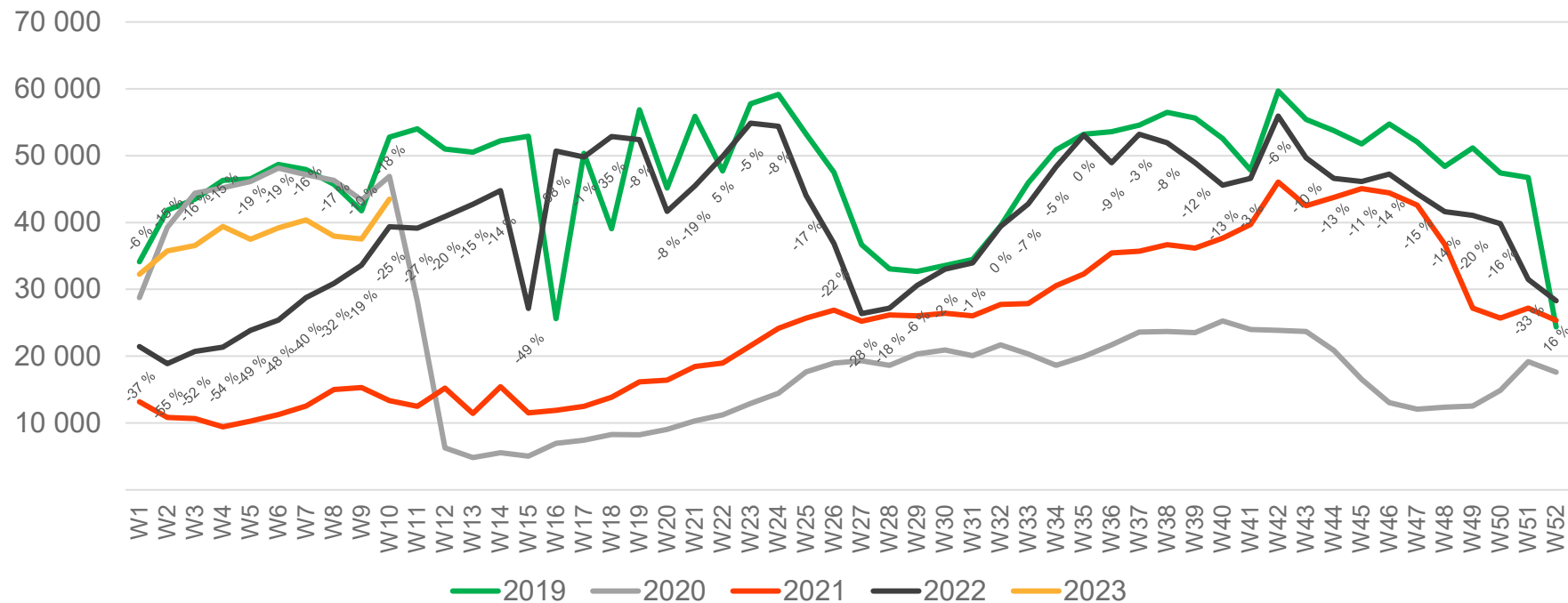
• Week 1 2019 is 31/12-18 – 6/1-19. week 1 2020 is 30/12-19 – 5/1-20. Week 52 2021 is 27/12-21 – 2/1-22. Week 52 2022 is 26/12-22 – 1/1-23.

# Passengers SVG international per week



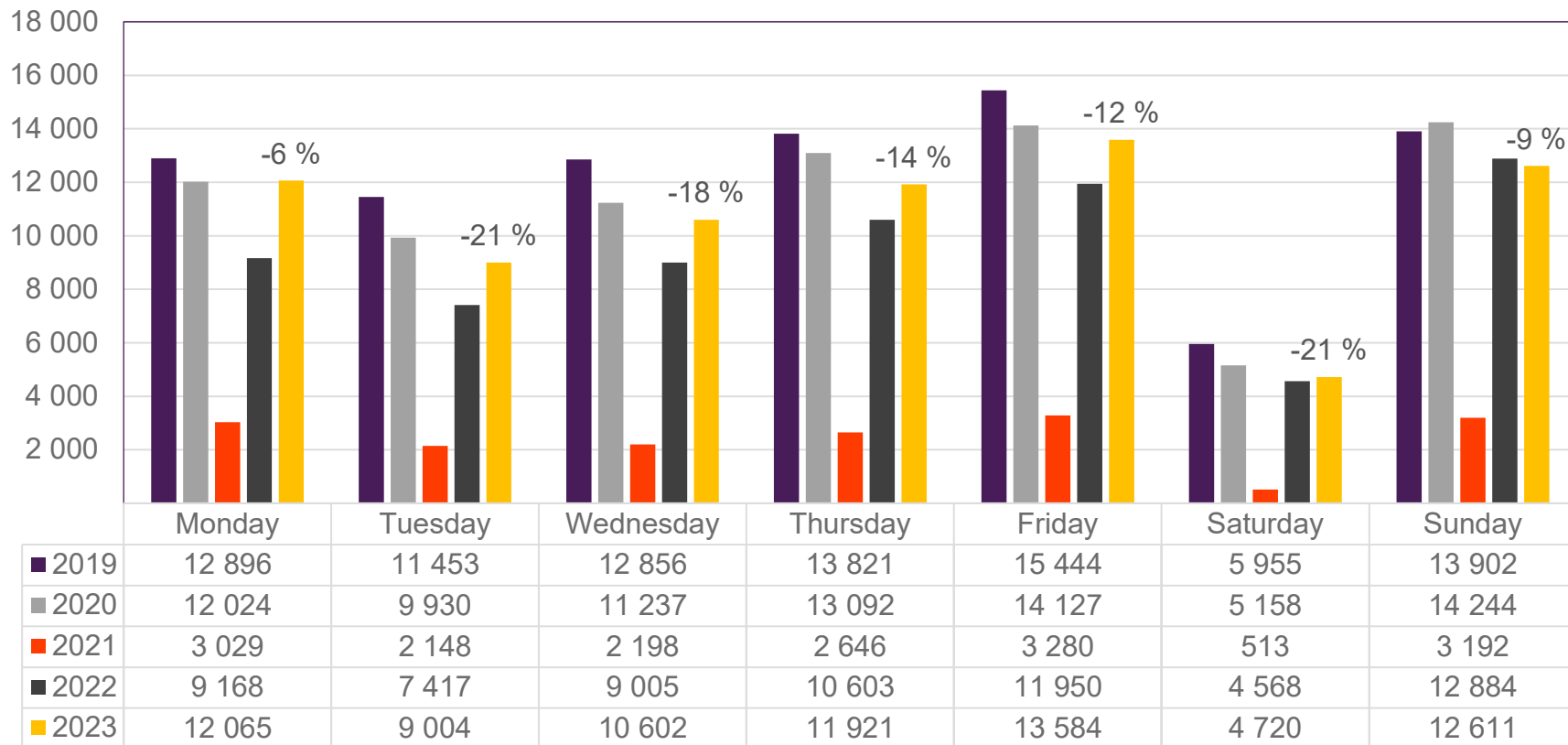
• Week 1 2019 is 31/12-18 – 6/1-19. week 1 2020 is 30/12-19 – 5/1-20. Week 52 2021 is 27/12-21 – 2/1-22. Week 52 2022 is 26/12-22 – 1/1-23.

# Passengers SVG domestic per week



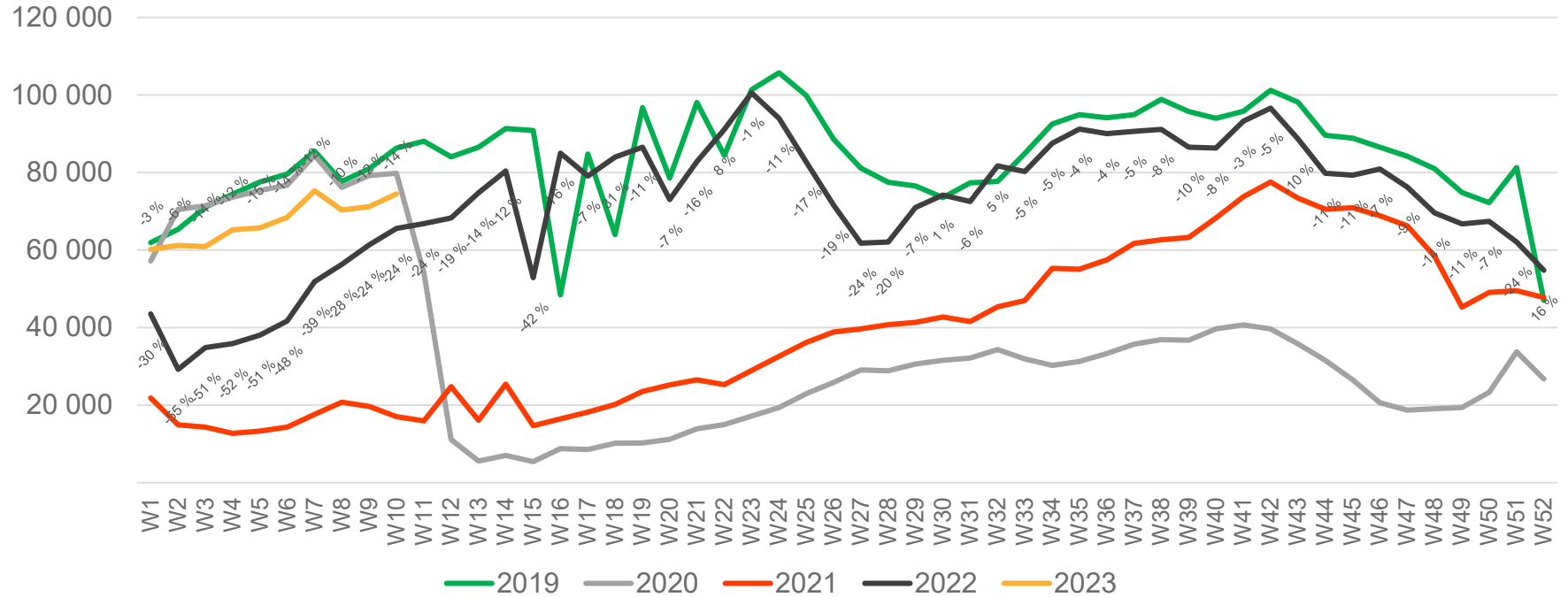
• Week 1 2019 is 31/12-18 – 6/1-19. week 1 2020 is 30/12-19 – 5/1-20. Week 52 2021 is 27/12-21 – 2/1-22. Week 52 2022 is 26/12-22 – 1/1-23.

# Passengers TRD total per day, week 10



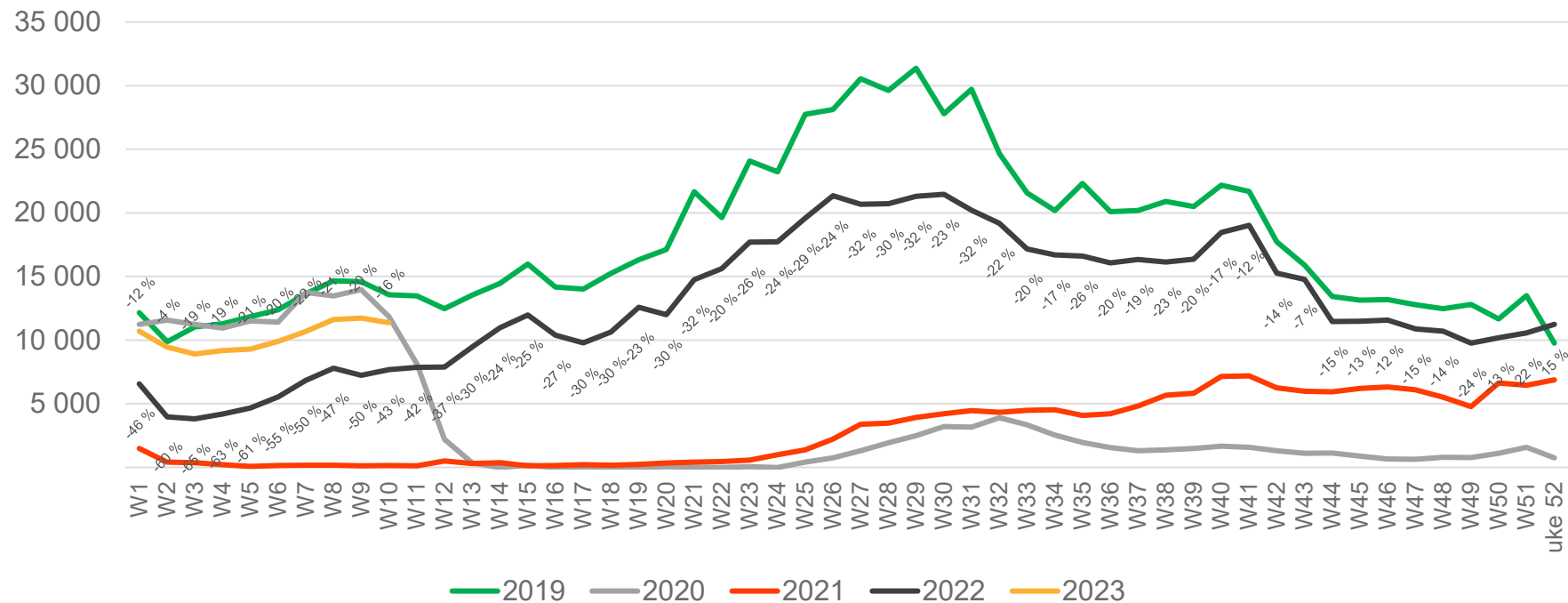
The change is measured from 2019.

# Passengers TRD total per week



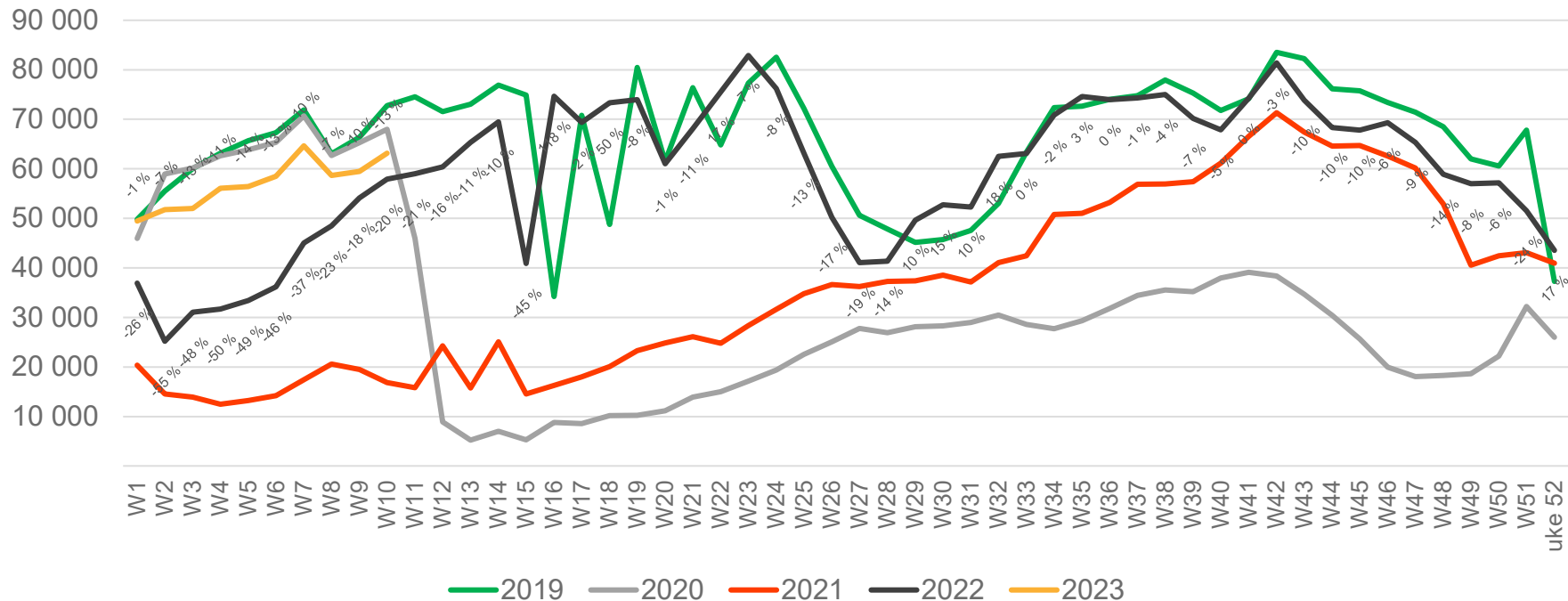
• Week 1 2019 is 31/12-18 – 6/1-19. week 1 2020 is 30/12-19 – 5/1-20. Week 52 2021 is 27/12-21 – 2/1-22. Week 52 2022 is 26/12-22 – 1/1-23.

# Passengers TRD international per week



• Week 1 2019 is 31/12-18 – 6/1-19. week 1 2020 is 30/12-19 – 5/1-20. Week 52 2021 is 27/12-21 – 2/1-22. Week 52 2022 is 26/12-22 – 1/1-23.

# Passengers TRD domestic per week



• Week 1 2019 is 31/12-18 – 6/1-19. week 1 2020 is 30/12-19 – 5/1-20. Week 52 2021 is 27/12-21 – 2/1-22. Week 52 2022 is 26/12-22 – 1/1-23.