



Passenger numbers per week

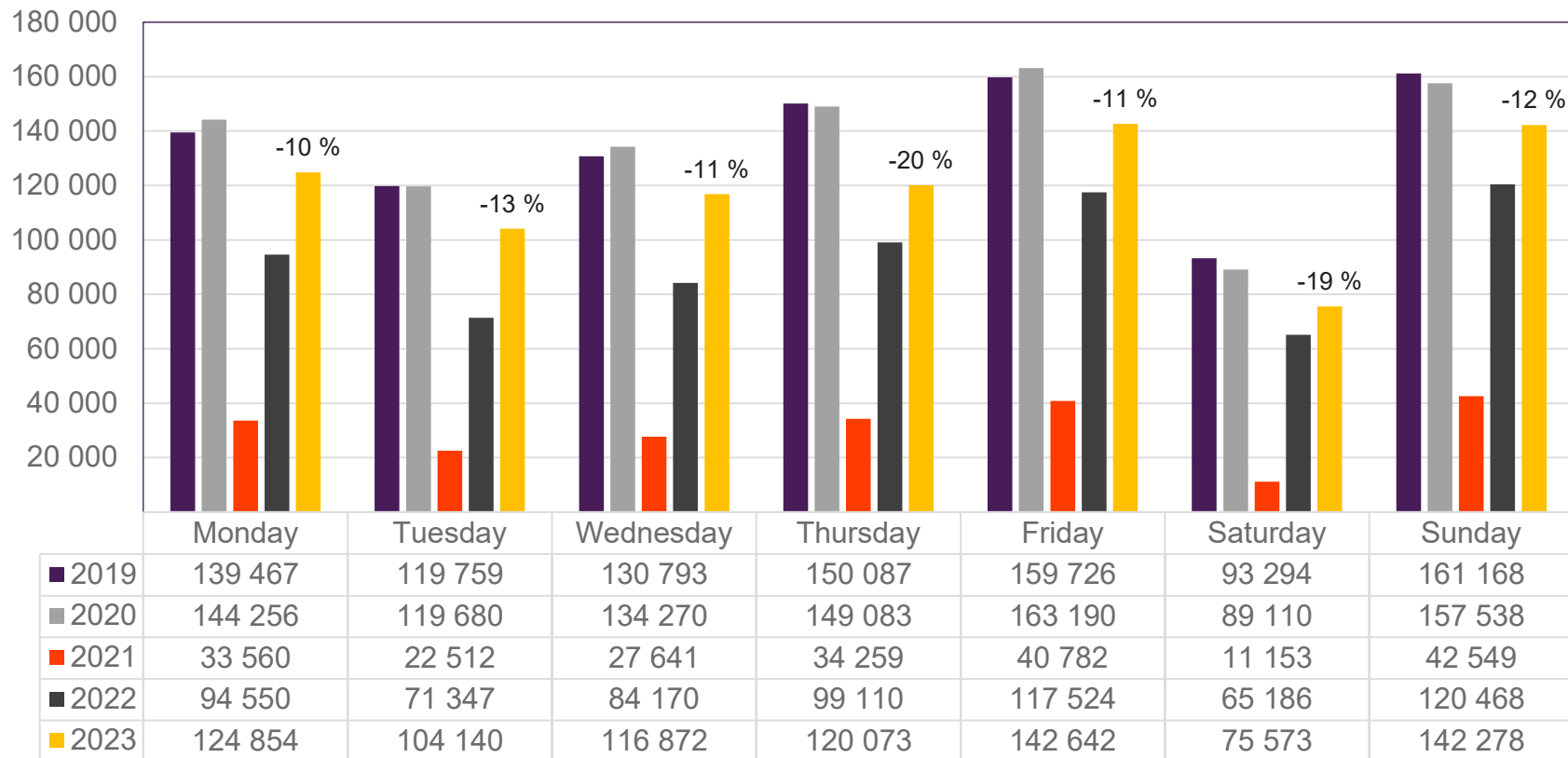
Preliminary figures

- The figures for the previous week are preliminary. It takes some time for all passenger numbers to be reported, so the figures for the previous week may be 1-2% lower than the final figures.
- The figures are taken from Avinor's traffic database.
- Week 1 2019 include numbers from 2018 (31/12 2018)
Week 1 2020 include numbers from 2019 (30-31/12 2019)
Week 52 2021 include numbers from 2022 (1-2/1 2022)
Week 52 2022 include numbers from 2023 (1/1 2023)

Top 10 airports, total week 8

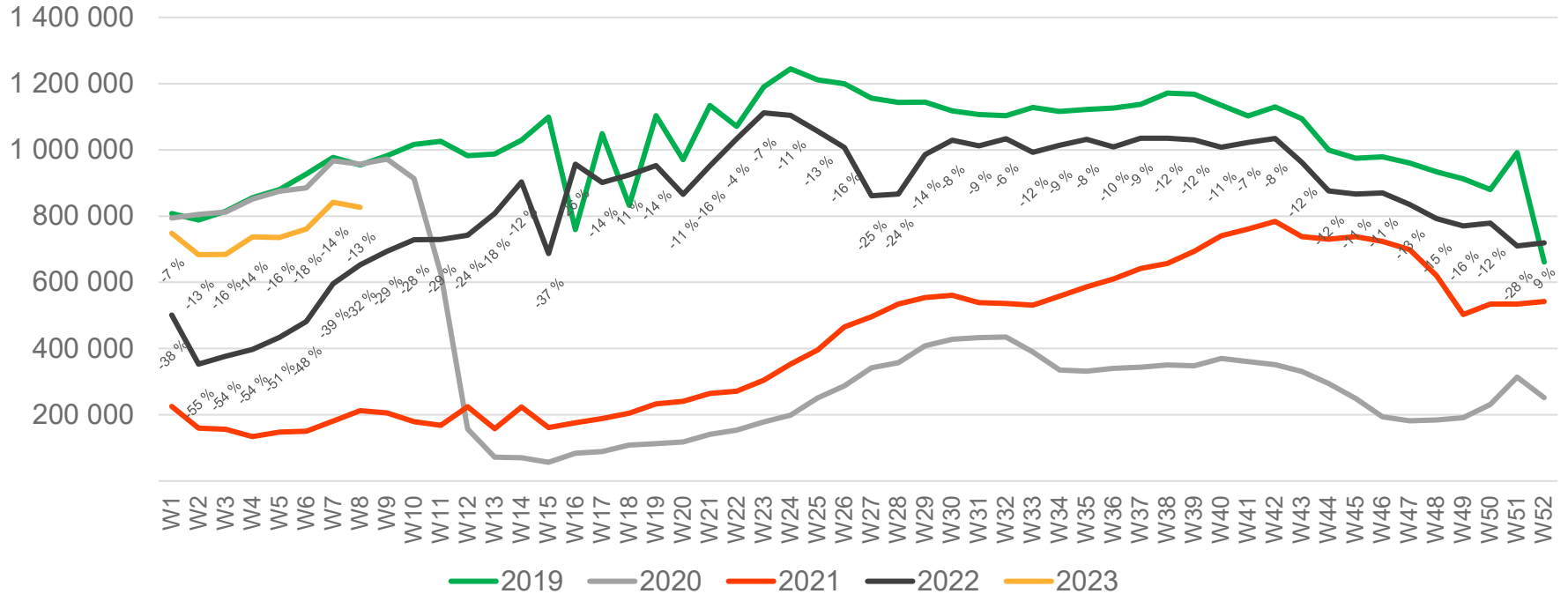
Airport	2019	2020	2021	2022	2023	2023 vs. 2019		2023 vs. 2022	
						Change	Change %	Change	Change %
Bardufoss	4 318	4 194	2 251	3 871	4 347	29	1 %	476	12 %
Bergen/Flesland	106 738	107 746	32 692	81 704	99 079	-7 659	-7 %	17 375	21 %
Bodø	29 052	31 299	12 770	26 185	30 023	971	3 %	3 838	15 %
Harstad/Narvik/Evenes	12 677	14 440	4 525	11 130	13 257	580	5 %	2 127	19 %
Kristiansand/Kjevik	17 691	16 338	3 853	9 911	12 817	-4 874	-28 %	2 906	29 %
Oslo/Gardermoen	506 981	505 732	69 802	320 036	422 276	-84 705	-17 %	102 240	32 %
Stavanger/Sola	72 639	71 191	15 934	45 681	61 849	-10 790	-15 %	16 168	35 %
Tromsø/Langnes	49 553	52 302	18 350	40 470	45 187	-4 366	-9 %	4 717	12 %
Trondheim/Værnes	77 712	76 167	20 765	56 298	70 005	-7 707	-10 %	13 707	24 %
Ålesund/Vigra	19 886	20 307	4 657	13 409	17 334	-2 552	-13 %	3 925	29 %

Passengers Avinor total per day, week 8



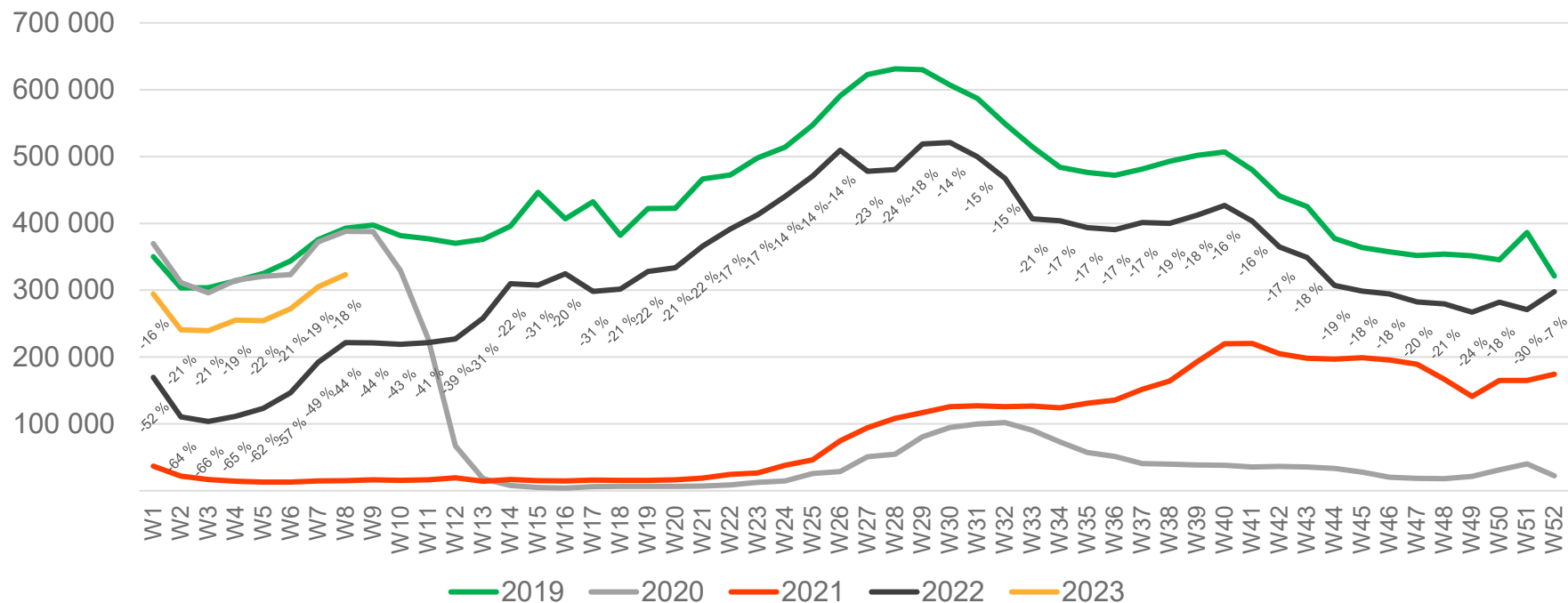
The change is measured from 2019.

Passengers Avinor total per week



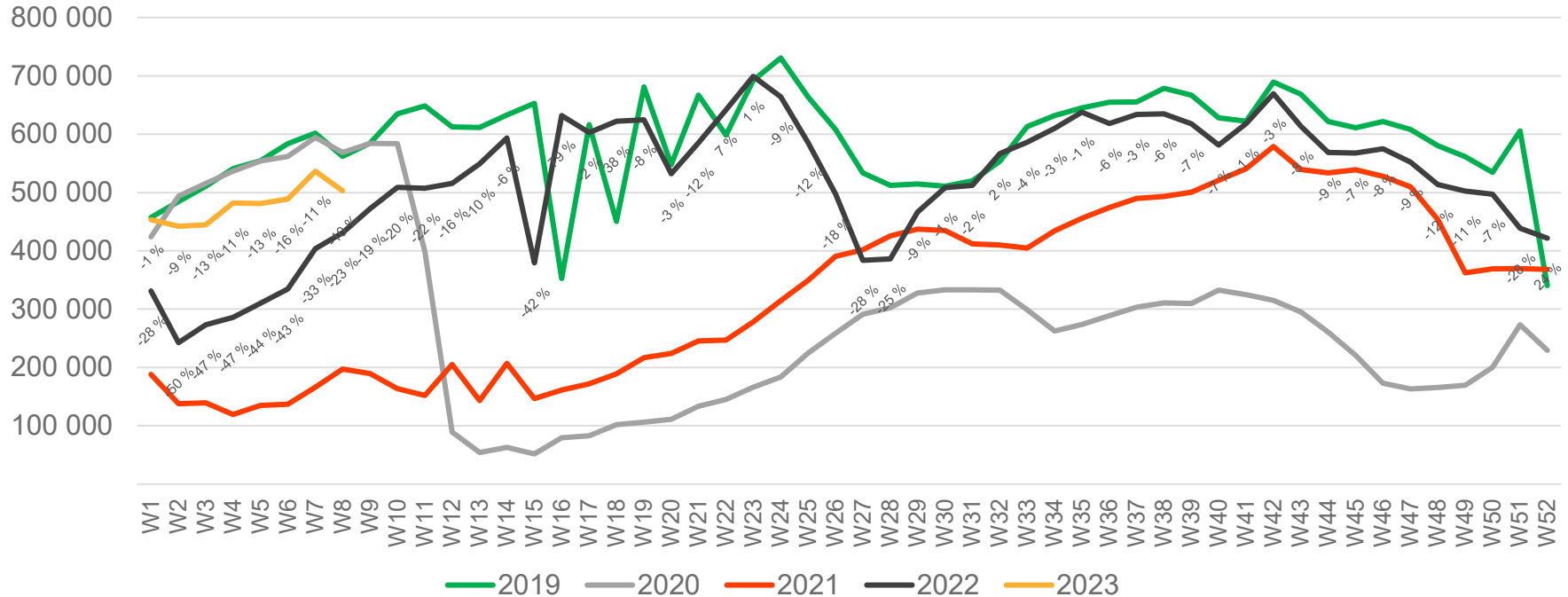
• Week 1 2019 is 31/12-18 – 6/1-19. week 1 2020 is 30/12-19 – 5/1-20. Week 52 2021 is 27/12-21 – 2/1-22. Week 52 2022 is 26/12-22 – 1/1-23.

Passengers Avinor international per week



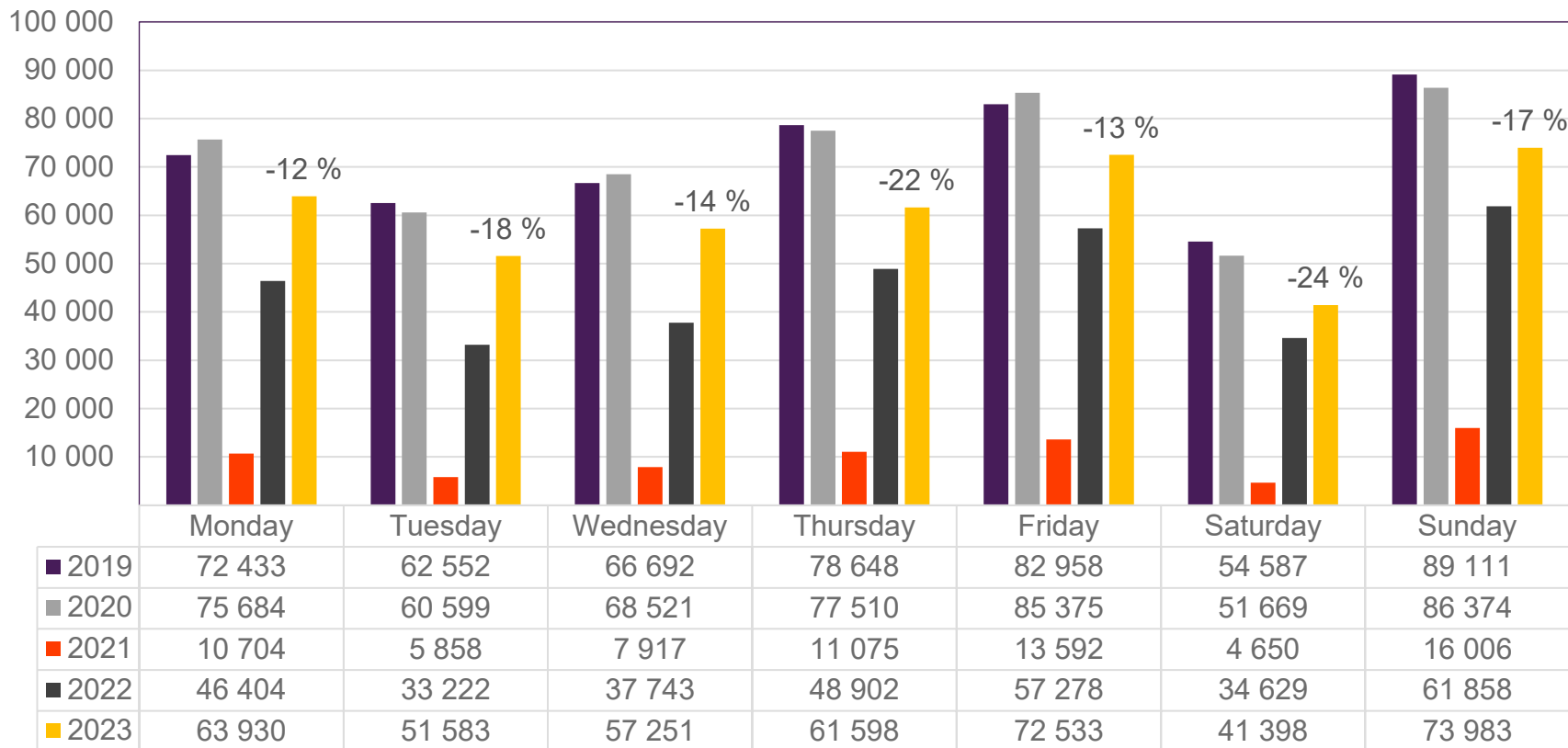
• Week 1 2019 is 31/12-18 – 6/1-19. week 1 2020 is 30/12-19 – 5/1-20. Week 52 2021 is 27/12-21 – 2/1-22. Week 52 2022 is 26/12-22 – 1/1-23.

Passengers Avinor domestic per week



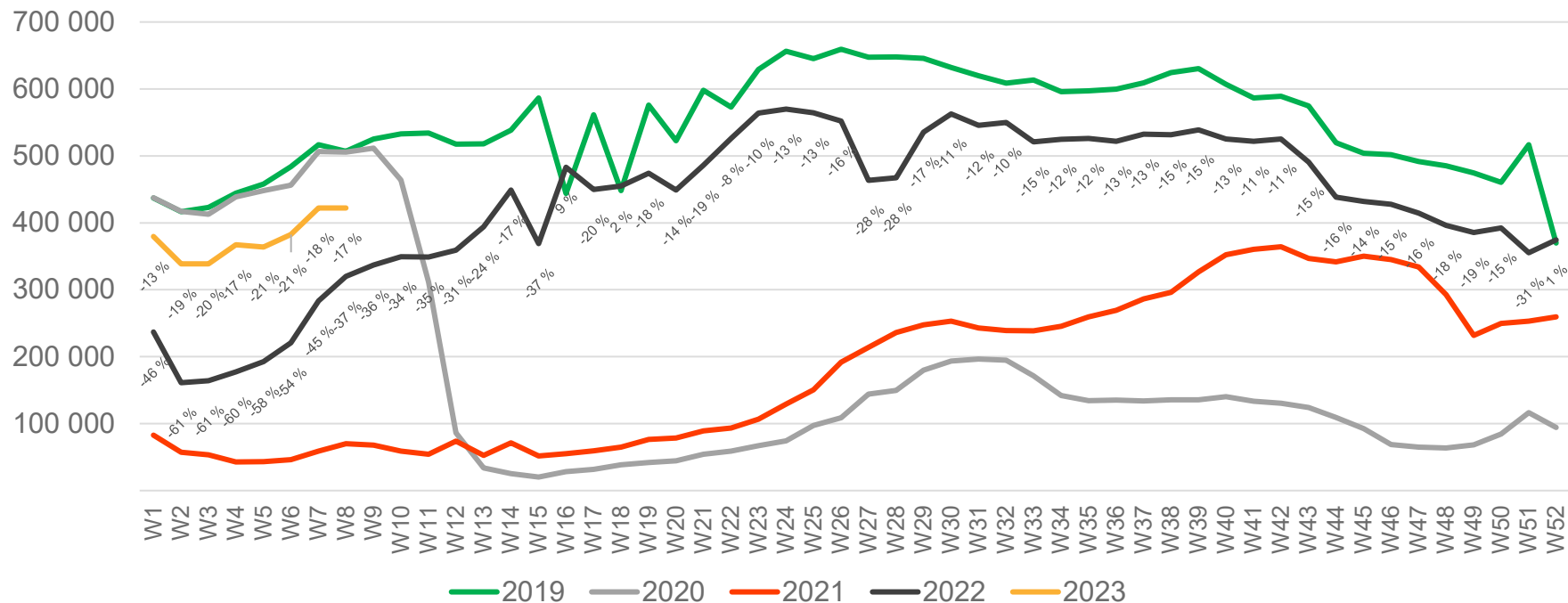
• Week 1 2019 is 31/12-18 – 6/1-19. week 1 2020 is 30/12-19 – 5/1-20. Week 52 2021 is 27/12-21 – 2/1-22. Week 52 2022 is 26/12-22 – 1/1-23.

Passengers OSL total per day, week 8



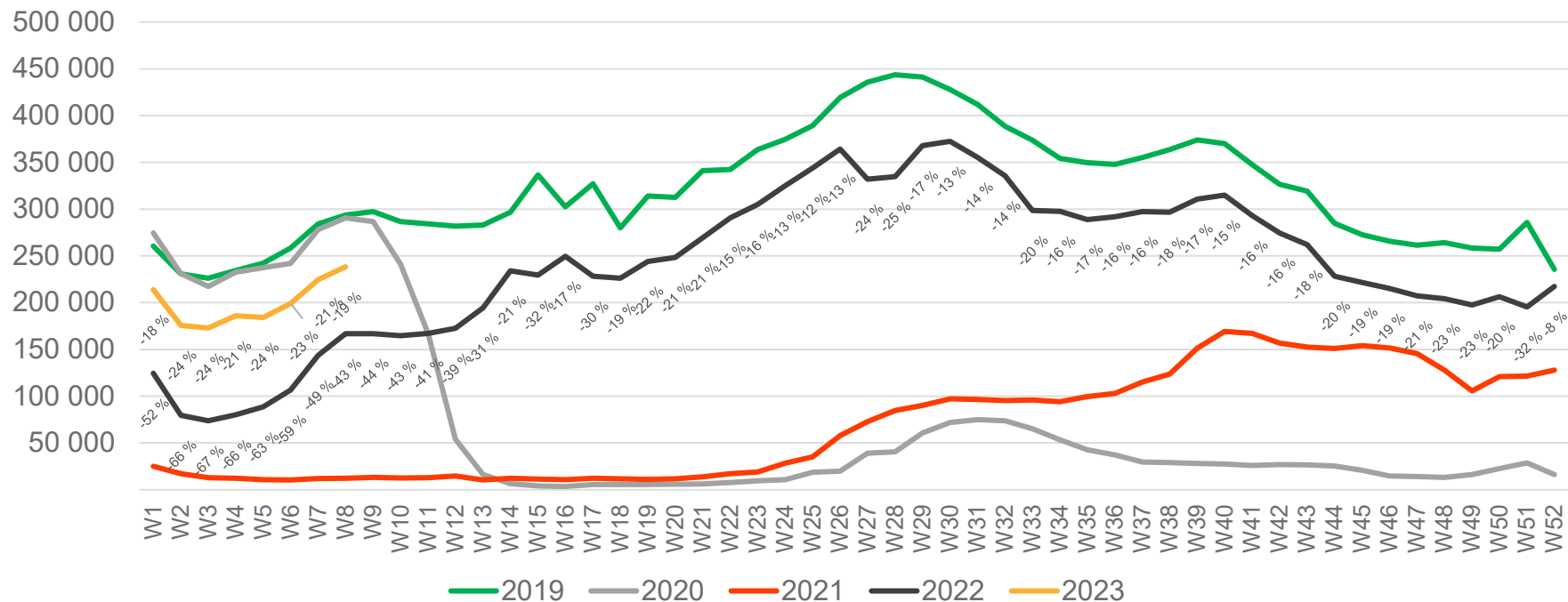
The change is measured from 2019.

Passengers OSL total per week



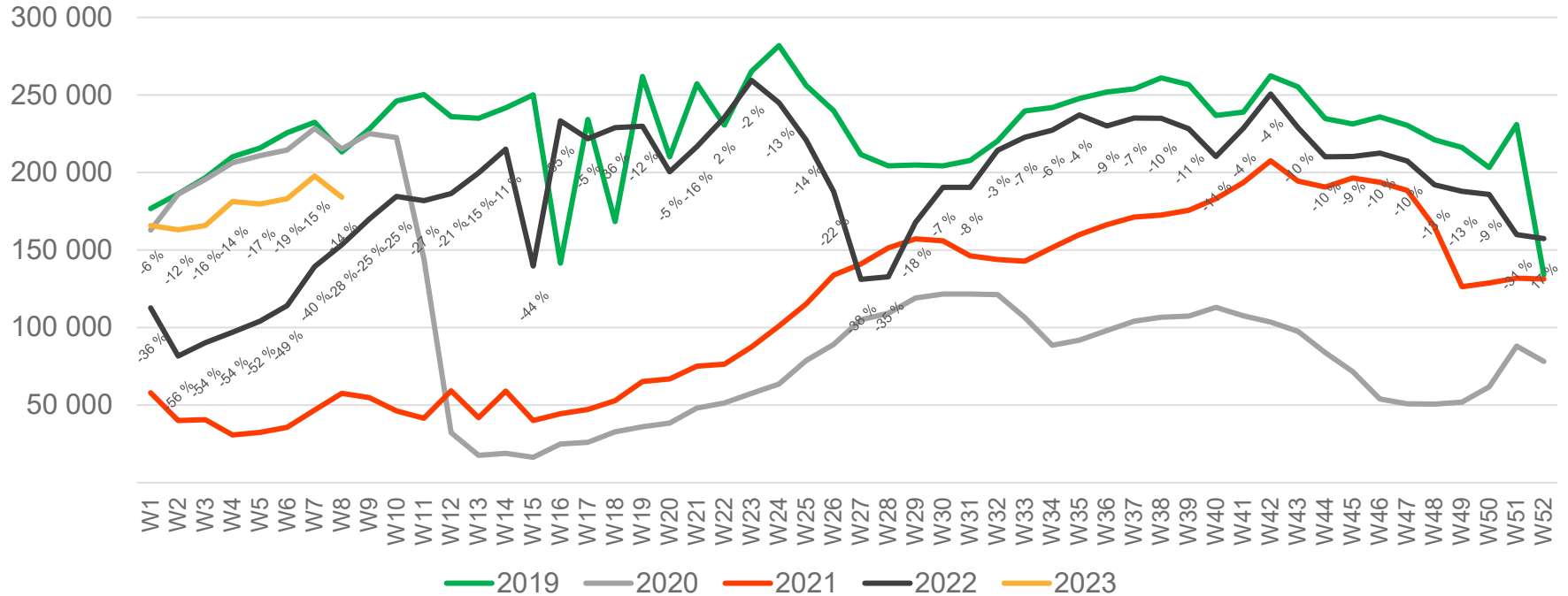
• Week 1 2019 is 31/12-18 – 6/1-19. week 1 2020 is 30/12-19 – 5/1-20. Week 52 2021 is 27/12-21 – 2/1-22. Week 52 2022 is 26/12-22 – 1/1-23.

Passengers OSL international per week



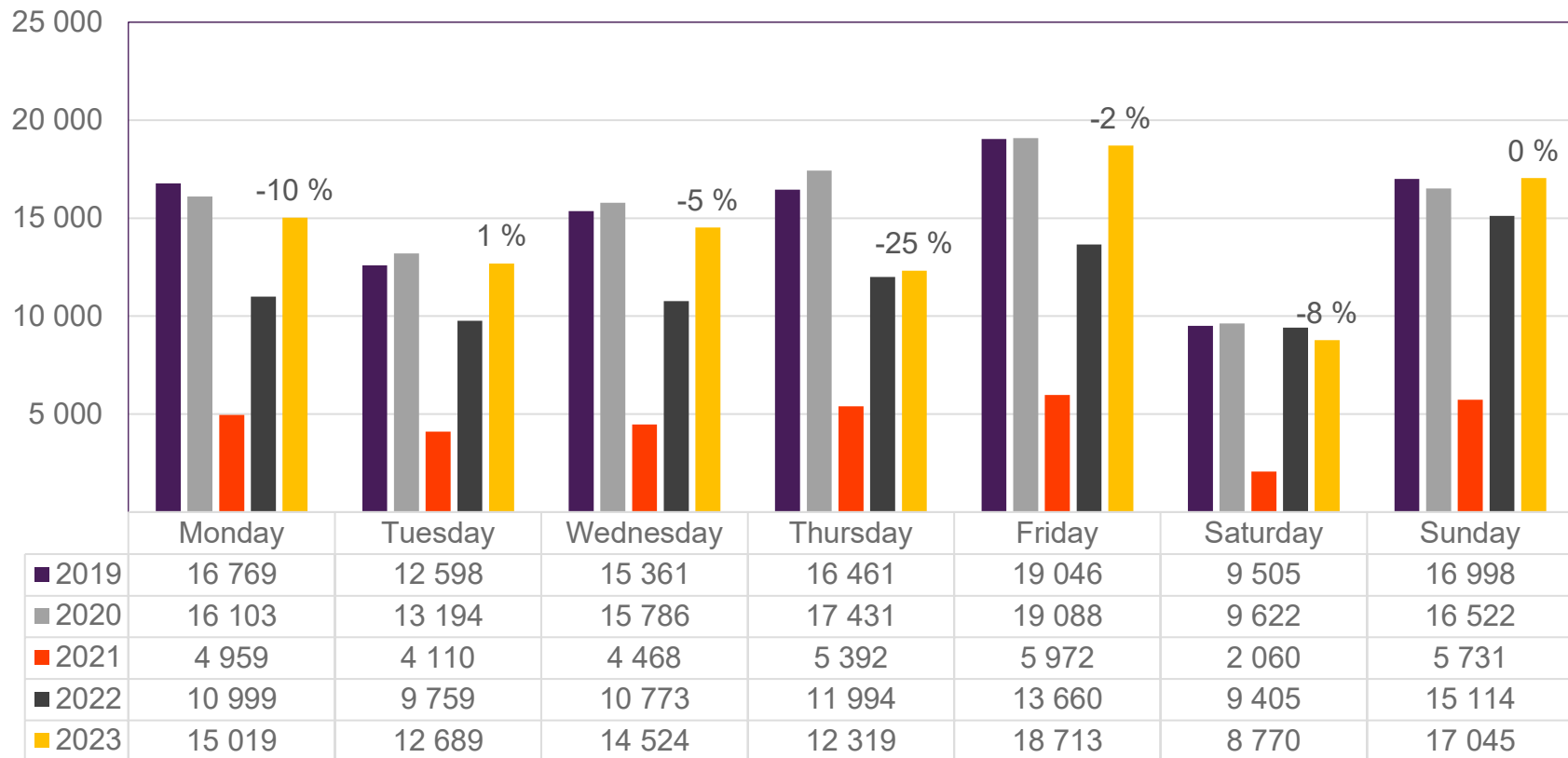
• Week 1 2019 is 31/12-18 – 6/1-19. week 1 2020 is 30/12-19 – 5/1-20. Week 52 2021 is 27/12-21 – 2/1-22. Week 52 2022 is 26/12-22 – 1/1-23.

Passengers OSL domestic per week



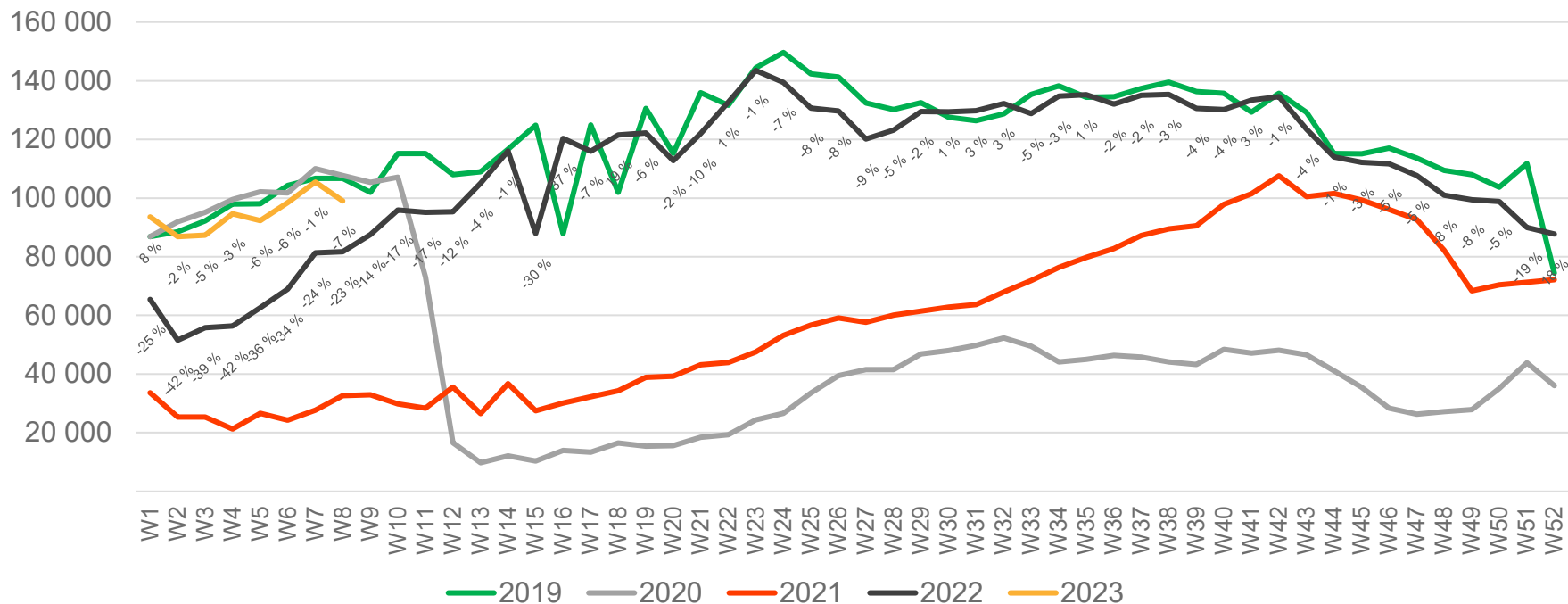
• Week 1 2019 is 31/12-18 – 6/1-19. week 1 2020 is 30/12-19 – 5/1-20. Week 52 2021 is 27/12-21 – 2/1-22. Week 52 2022 is 26/12-22 – 1/1-23.

Passengers BGO total per day, week 8



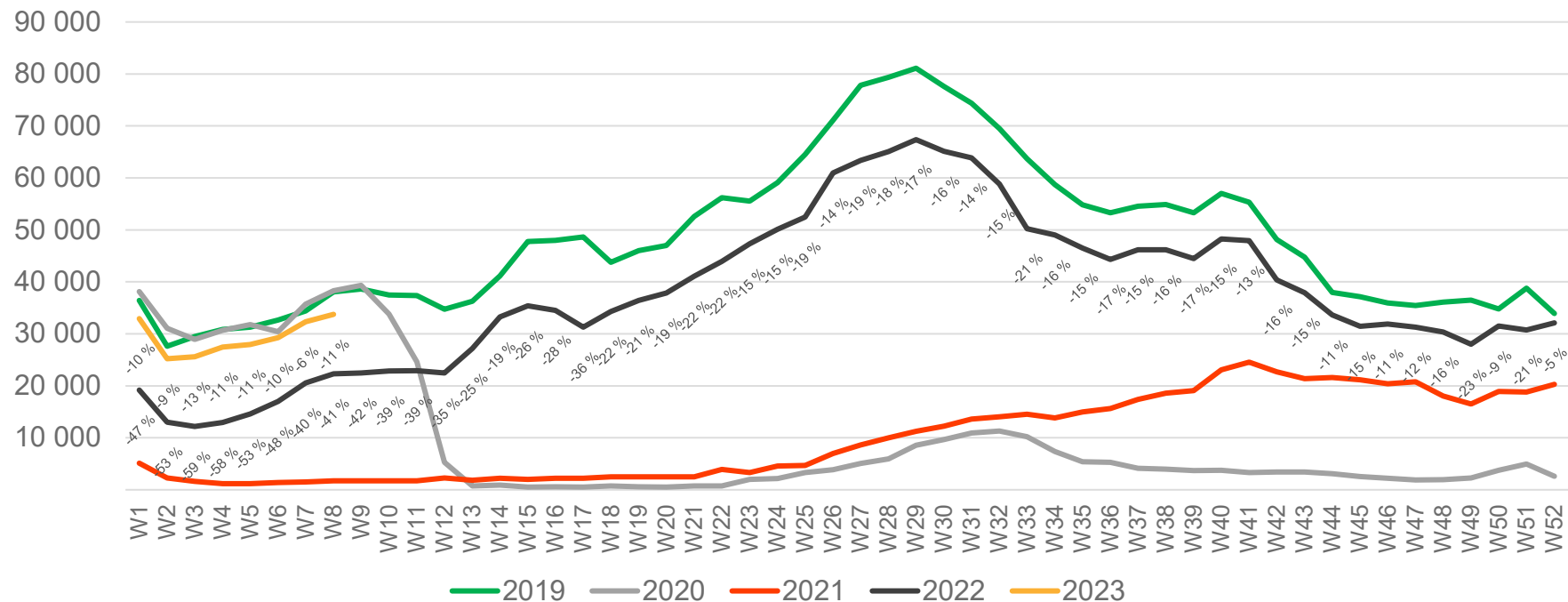
The change is measured from 2019.

Passengers BGO total per week



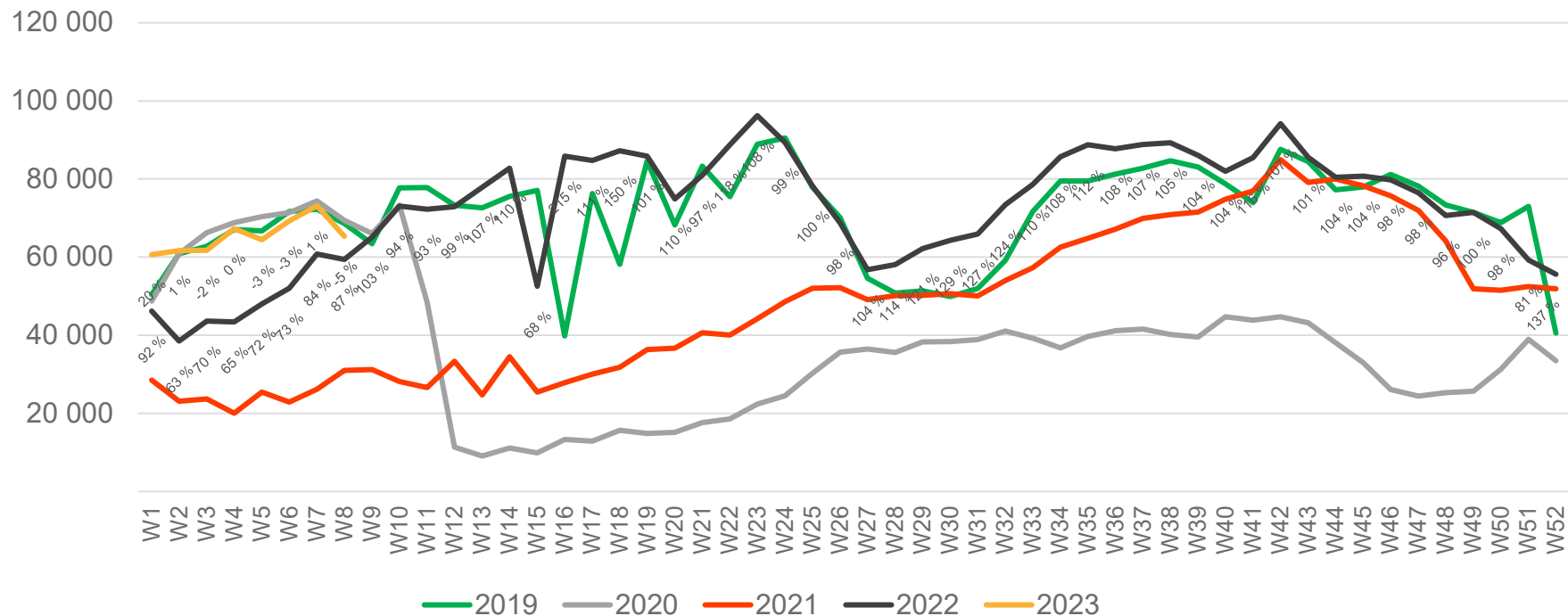
• Week 1 2019 is 31/12-18 – 6/1-19. week 1 2020 is 30/12-19 – 5/1-20. Week 52 2021 is 27/12-21 – 2/1-22. Week 52 2022 is 26/12-22 – 1/1-23.

Passengers BGO international per week



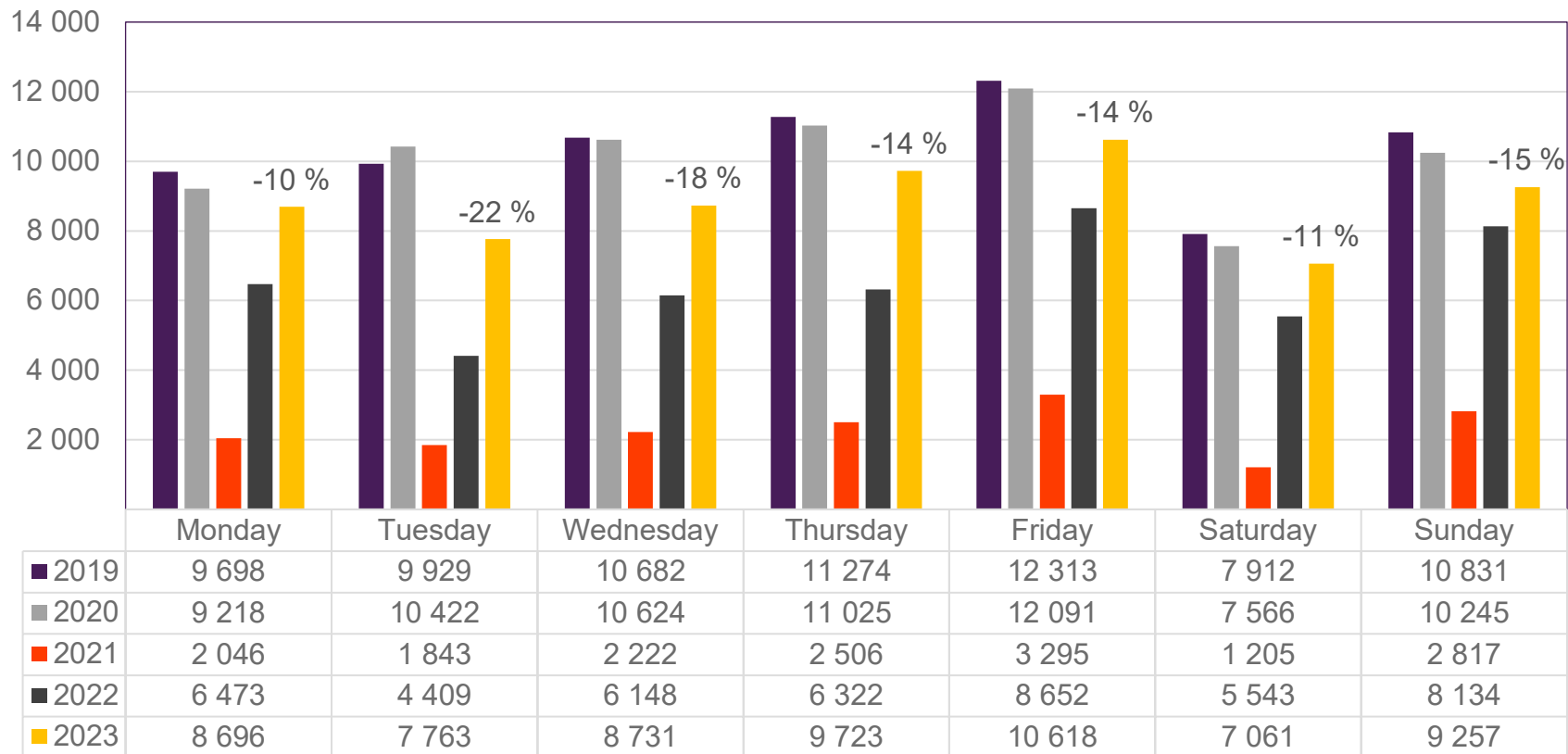
• Week 1 2019 is 31/12-18 – 6/1-19. week 1 2020 is 30/12-19 – 5/1-20. Week 52 2021 is 27/12-21 – 2/1-22. Week 52 2022 is 26/12-22 – 1/1-23.

Passengers BGO domestic per week



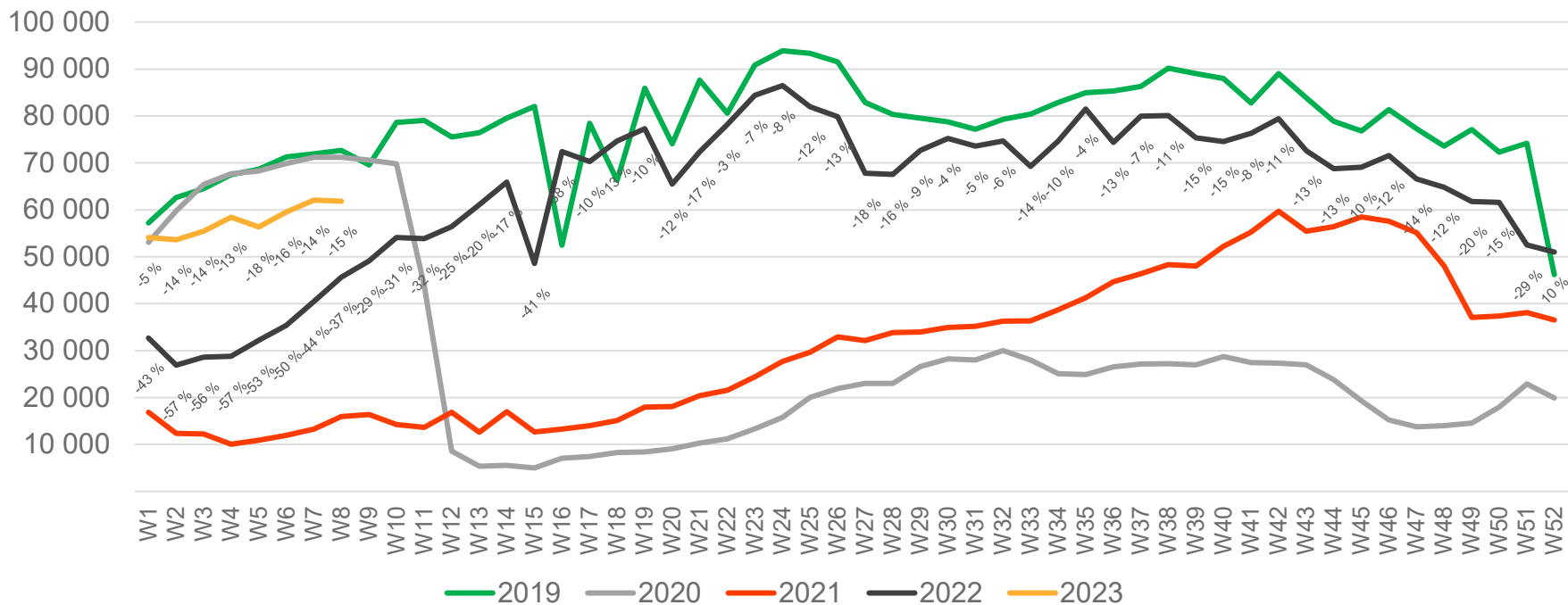
• Week 1 2019 is 31/12-18 – 6/1-19. week 1 2020 is 30/12-19 – 5/1-20. Week 52 2021 is 27/12-21 – 2/1-22. Week 52 2022 is 26/12-22 – 1/1-23.

Passengers SVG total per day, week 8



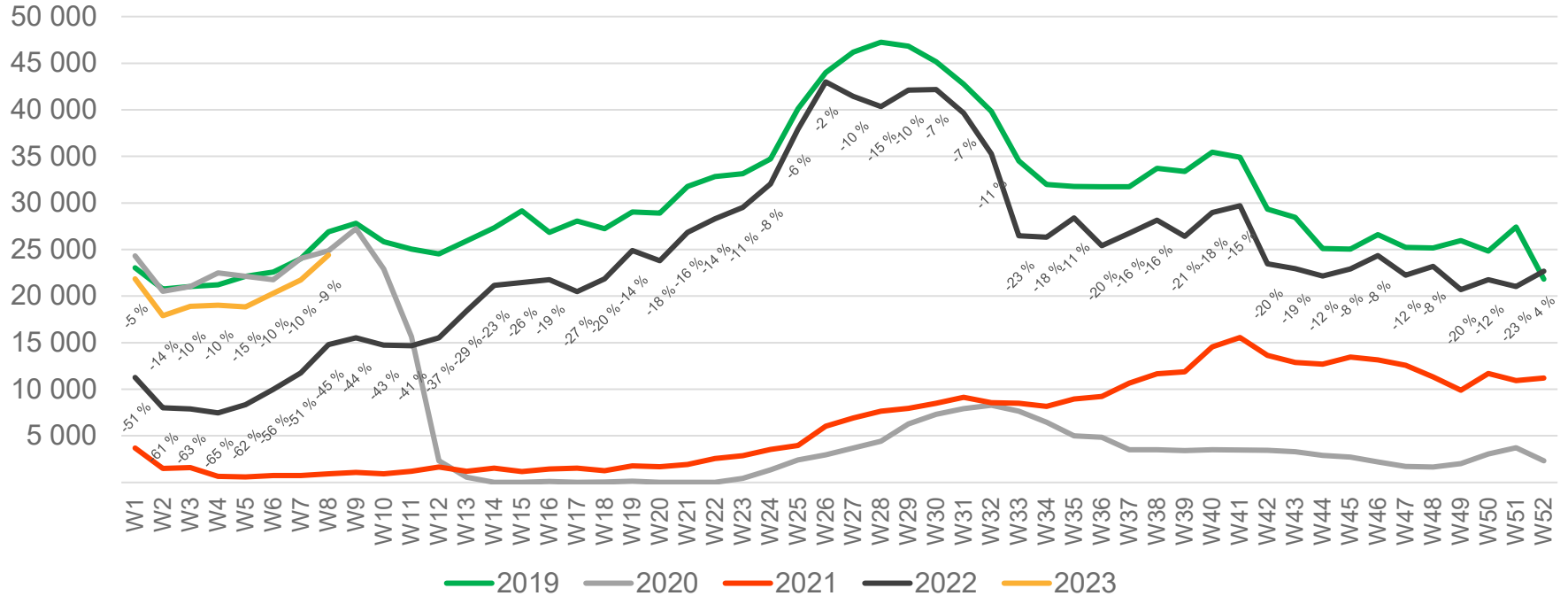
The change is measured from 2019.

Passengers SVG total per week



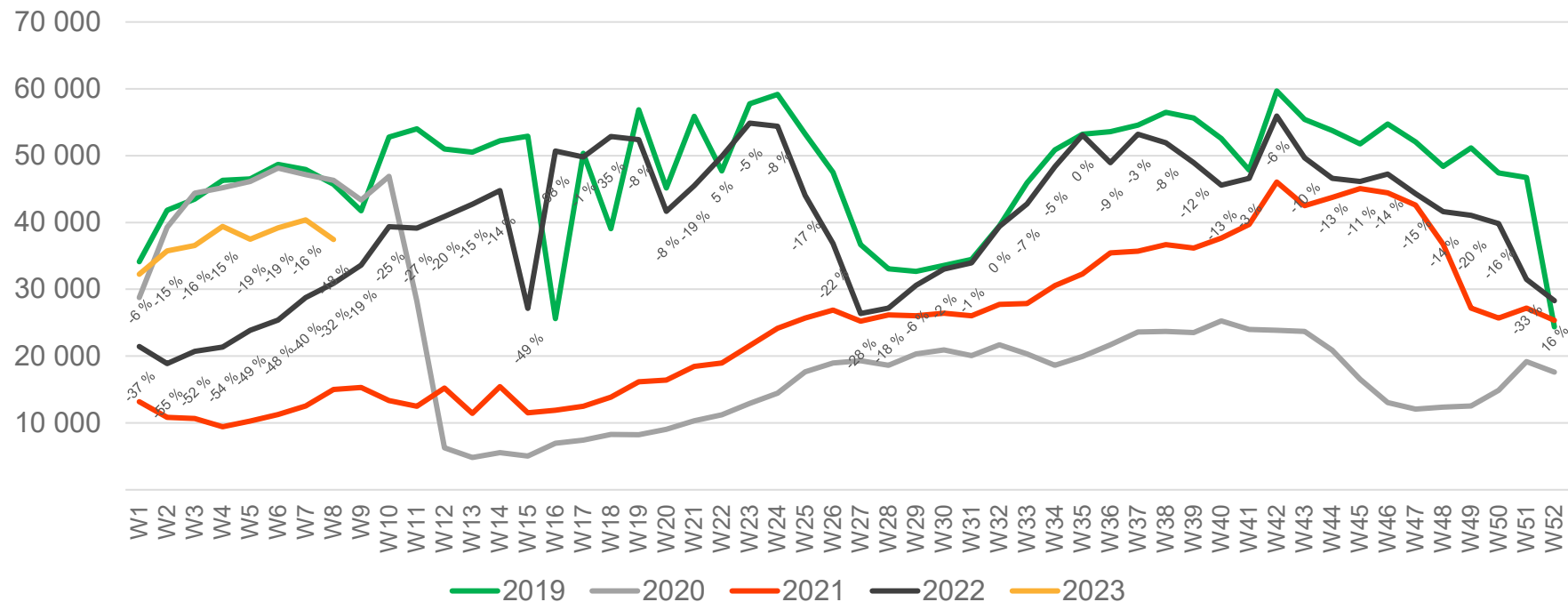
• Week 1 2019 is 31/12-18 – 6/1-19. week 1 2020 is 30/12-19 – 5/1-20. Week 52 2021 is 27/12-21 – 2/1-22. Week 52 2022 is 26/12-22 – 1/1-23.

Passengers SVG international per week



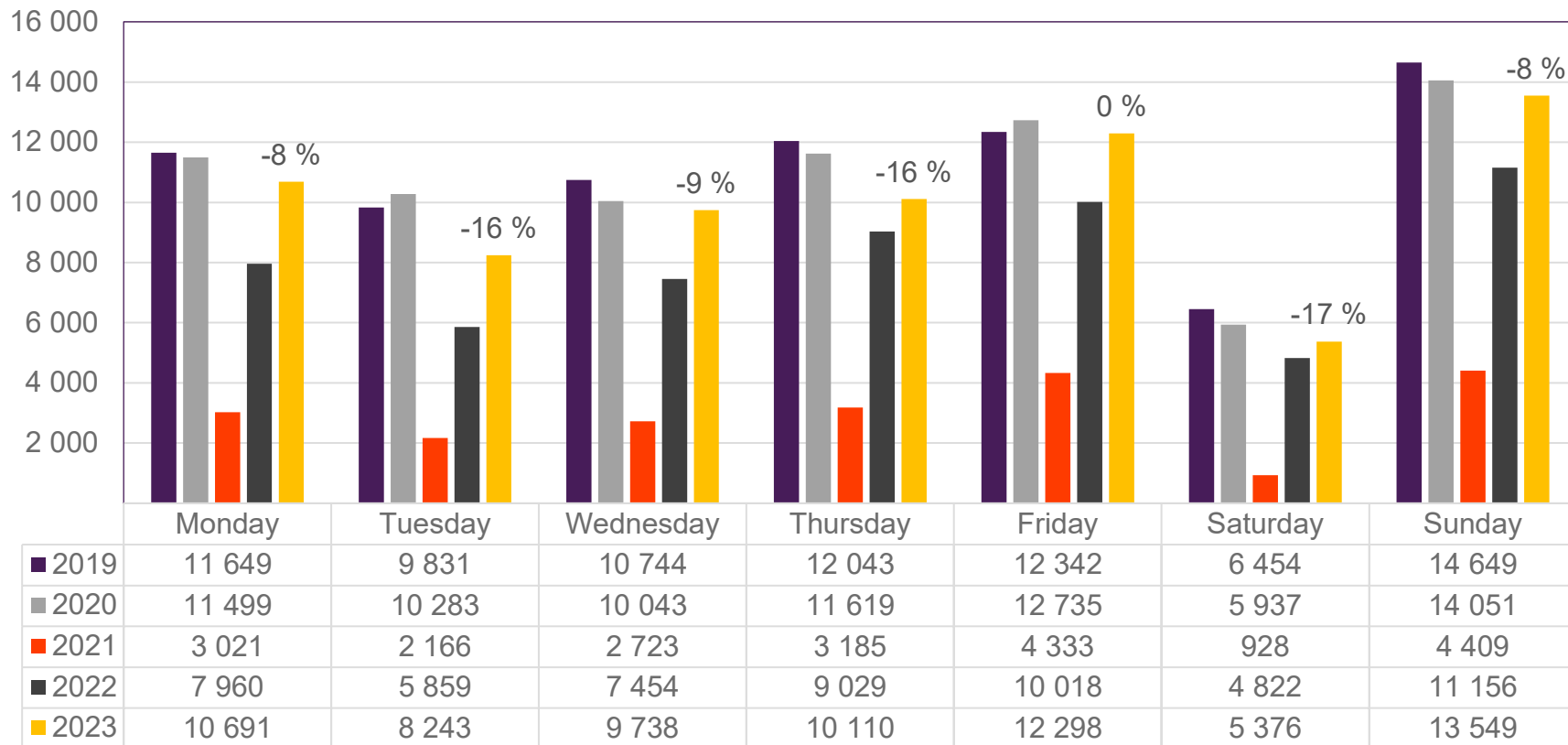
• Week 1 2019 is 31/12-18 – 6/1-19. week 1 2020 is 30/12-19 – 5/1-20. Week 52 2021 is 27/12-21 – 2/1-22. Week 52 2022 is 26/12-22 – 1/1-23.

Passengers SVG domestic per week



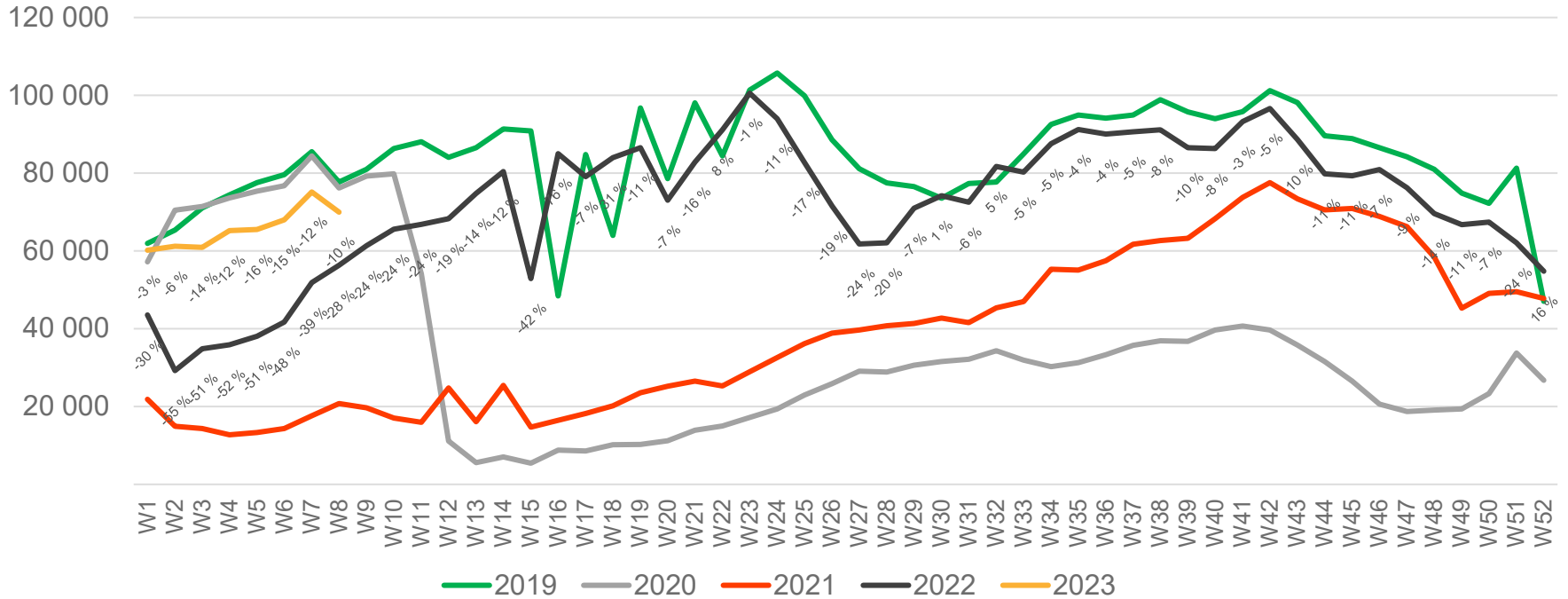
• Week 1 2019 is 31/12-18 – 6/1-19. week 1 2020 is 30/12-19 – 5/1-20. Week 52 2021 is 27/12-21 – 2/1-22. Week 52 2022 is 26/12-22 – 1/1-23.

Passengers TRD total per day, week 8



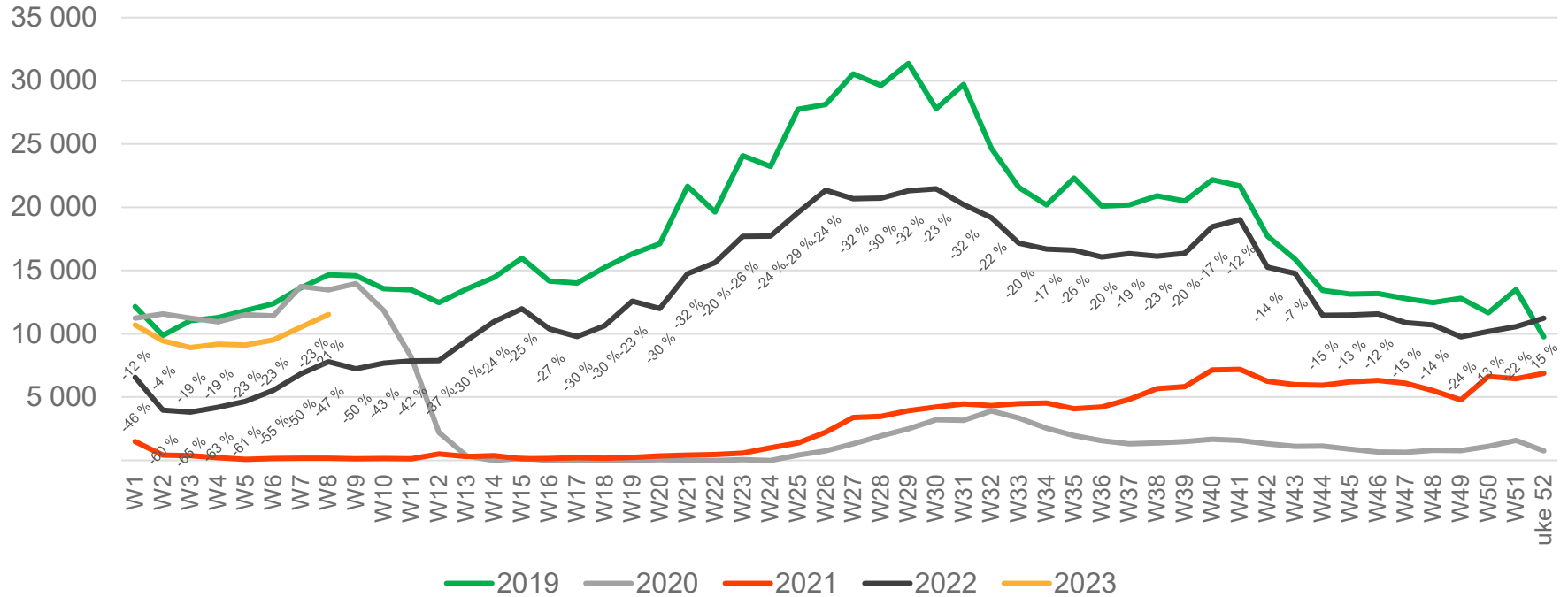
The change is measured from 2019.

Passengers TRD total per week



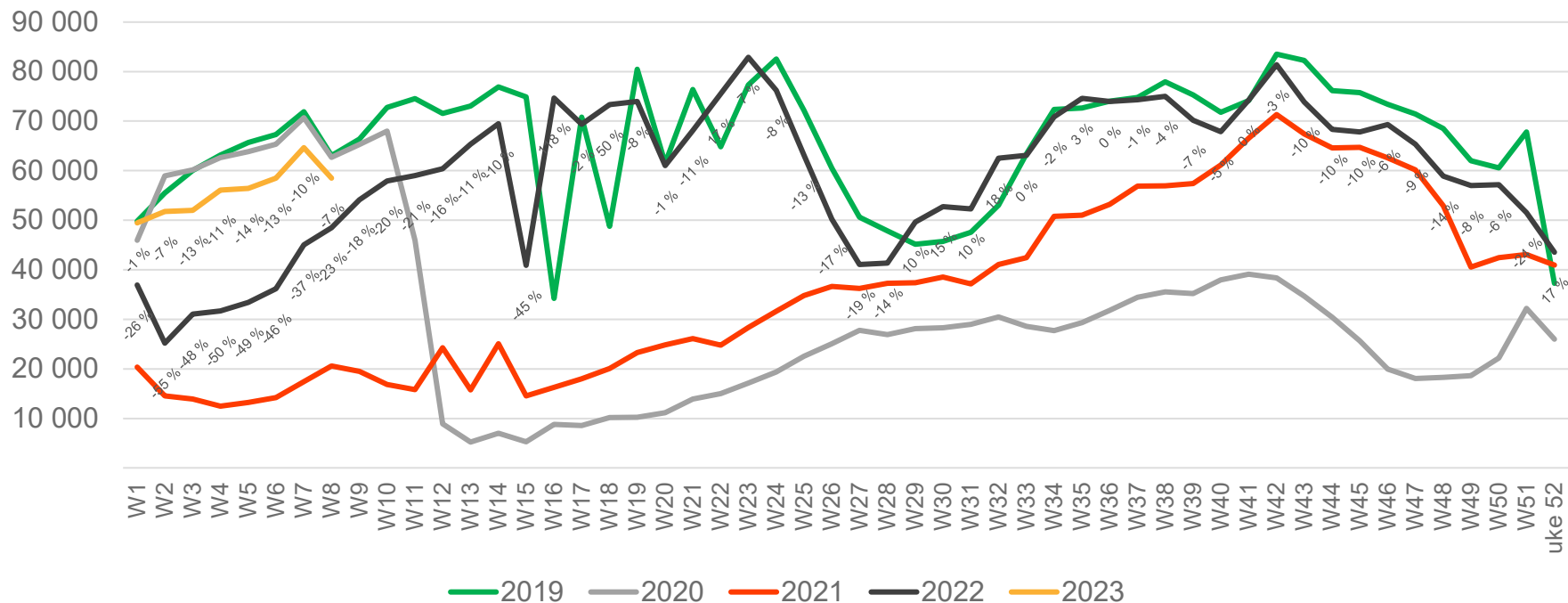
• Week 1 2019 is 31/12-18 – 6/1-19. week 1 2020 is 30/12-19 – 5/1-20. Week 52 2021 is 27/12-21 – 2/1-22. Week 52 2022 is 26/12-22 – 1/1-23.

Passengers TRD international per week



• Week 1 2019 is 31/12-18 – 6/1-19. week 1 2020 is 30/12-19 – 5/1-20. Week 52 2021 is 27/12-21 – 2/1-22. Week 52 2022 is 26/12-22 – 1/1-23.

Passengers TRD domestic per week



• Week 1 2019 is 31/12-18 – 6/1-19. week 1 2020 is 30/12-19 – 5/1-20. Week 52 2021 is 27/12-21 – 2/1-22. Week 52 2022 is 26/12-22 – 1/1-23.