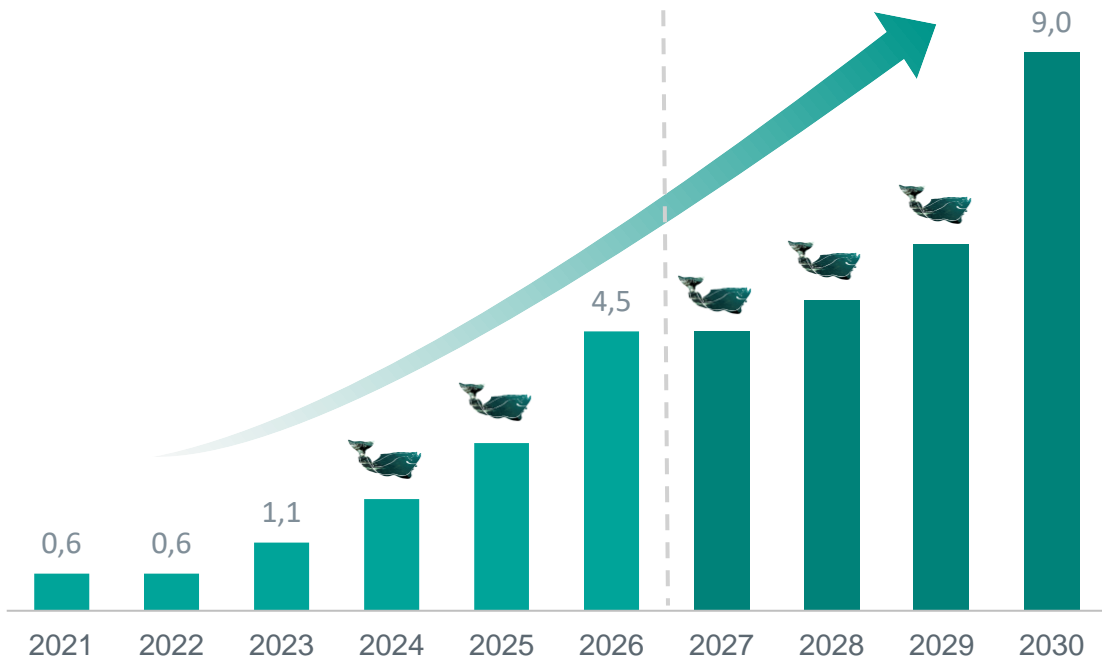




NORDIC HALIBUT

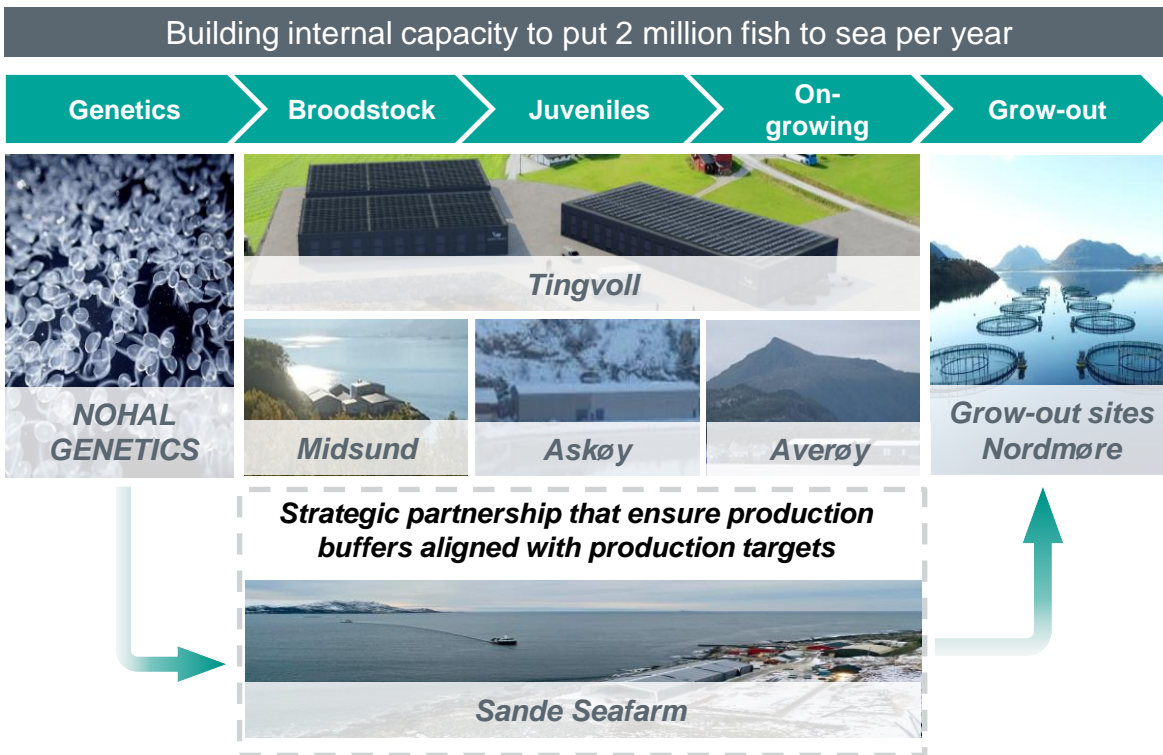
NORDIC HALIBUT

# Realizing 9.000 tonnes HOG within 2030




-  Biological development reached predictability and scale potential
-  Technological solutions proven and accessible using 100% flow-through systems
-  Market demand and willingness-to-pay for premium fish products

# Fully integrated value chain enables flexibility in ramp-up of production



Full biological and operational control throughout the value chain a key success factor



Long-term strategic partnership with Sande Seafarm to establish production buffers in land-phase



Value chain builds on cross-industry collaboration that secures capacity and de-risks future production volumes

# New fully integrated land-based facility located in our core production HUB in Nordmøre



Strategically located in NOHAL core production HUB in Nordmøre enabling capacity for 9.000 tonnes HOG



Proven technology and based on a 100% flow-through system yielding low kwh/kg



Fit-for-purpose and designed for Halibut farming specifically



Production capacity of 1.25 million juveniles p.a.



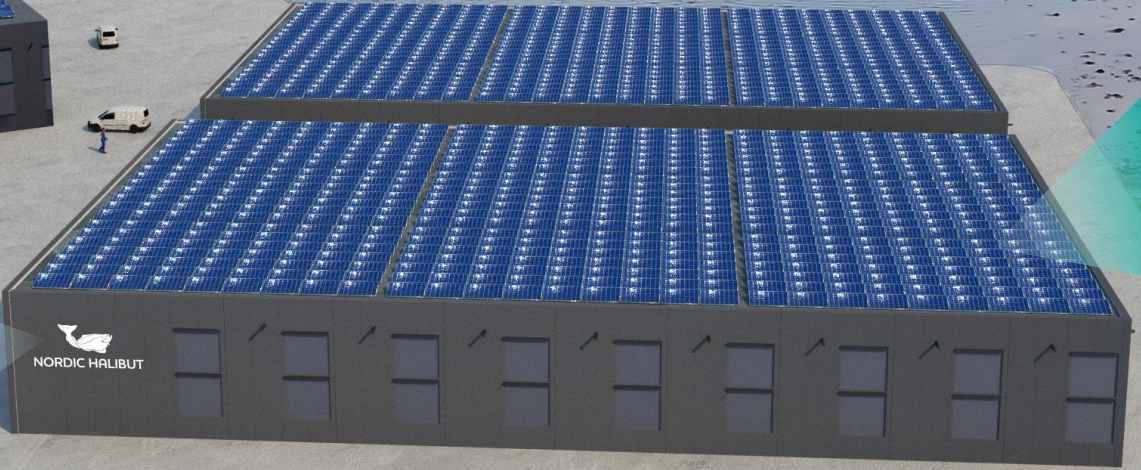
Perfect water conditions for Halibut farming



Close to self-sufficient by utilizing its own renewable solar power



NOHAL's first fully fledged land-based Halibut facility





Broodstock and juvenile production unit



On-growing production units