



Passenger numbers per week

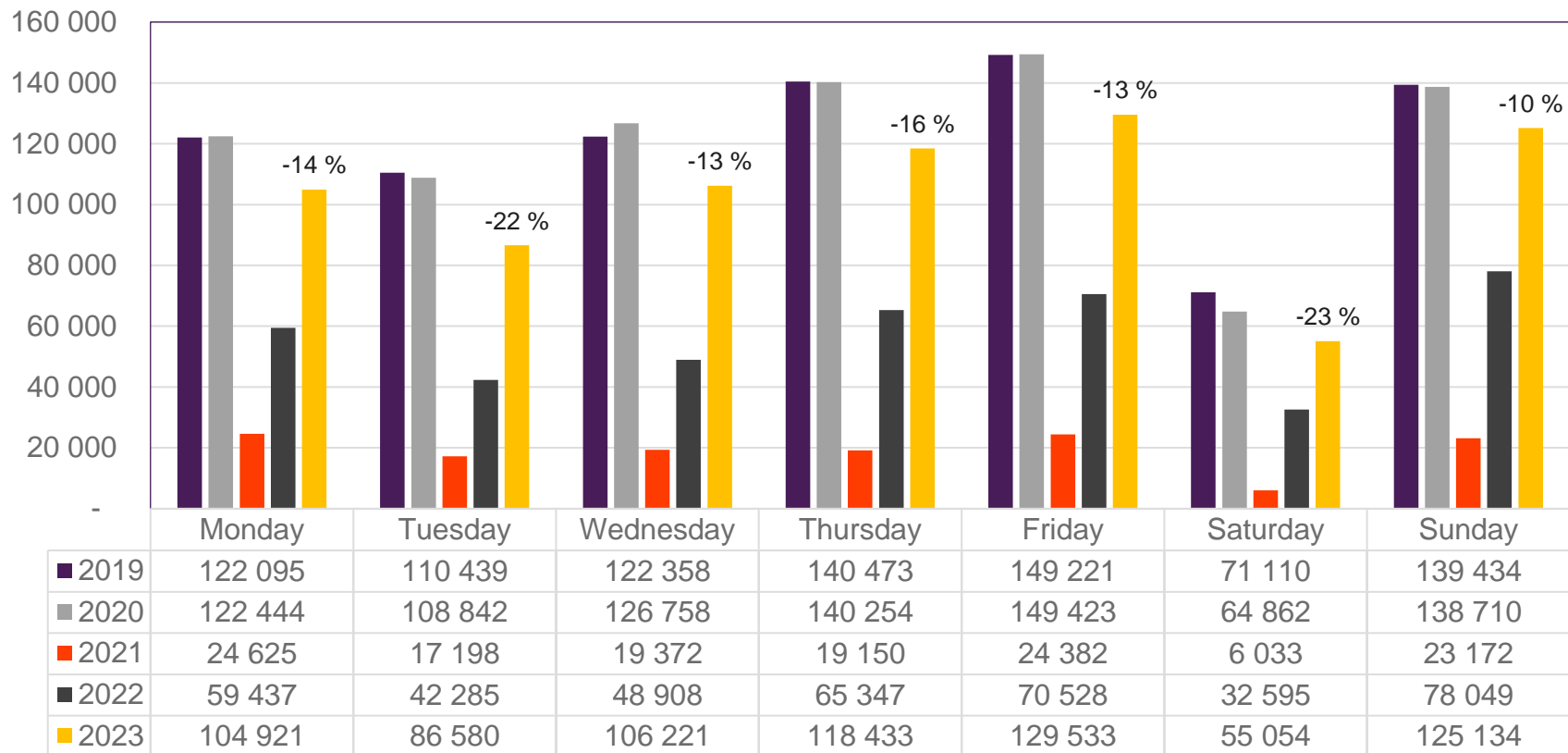
Preliminary figures

- The figures for the previous week are preliminary. It takes some time for all passenger numbers to be reported, so the figures for the previous week may be 1-2% lower than the final figures.
- The figures are taken from Avinor's traffic database.
- Week 1 2019 include numbers from 2018 (31/12 2018)
Week 1 2020 include numbers from 2019 (30-31/12 2019)
Week 52 2021 include numbers from 2022 (1-2/1 2022)
Week 52 2022 include numbers from 2023 (1/1 2023)

Top 10 airports, total week 4

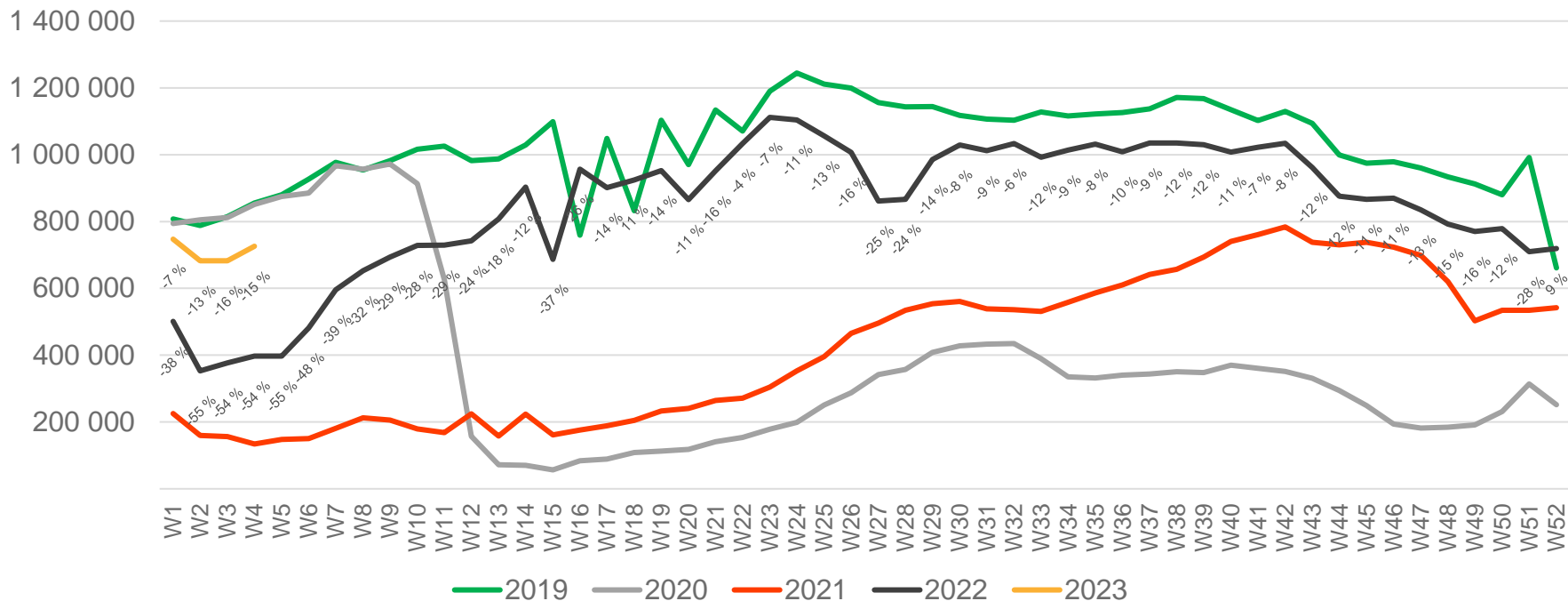
Airport	2019	2020	2021	2022	2023	2023 vs. 2019		2023 vs. 2022	
						Change	Change %	Change	Change %
Oslo/Gardermoen	444 565	438 808	42 914	177 233	362 863	-81 702	-18 %	185 630	105 %
Bergen/Flesland	97 949	99 486	21 210	56 400	93 225	-4 724	-5 %	36 825	65 %
Trondheim/Værnes	74 417	73 588	12 693	35 899	64 008	-10 409	-14 %	28 109	78 %
Stavanger/Sola	67 524	67 668	10 081	28 804	58 322	-9 202	-14 %	29 518	102 %
Tromsø/Langnes	44 690	44 705	12 252	27 523	39 639	-5 051	-11 %	12 116	44 %
Bodø	27 166	27 717	8 334	15 938	24 151	-3 015	-11 %	8 213	52 %
Ålesund/Vigra	18 387	17 990	2 856	8 772	15 165	-3 222	-18 %	6 393	73 %
Kristiansand/Kjevik	17 327	16 944	2 688	6 634	13 018	-4 309	-25 %	6 384	96 %
Harstad/Narvik/Evenes	10 432	10 558	2 553	7 259	10 413	-19	0 %	3 154	43 %
Bardufoss	3 700	4 243	933	2 100	3 514	-186	-5 %	1 414	67 %

Passengers Avinor total per day, week 4



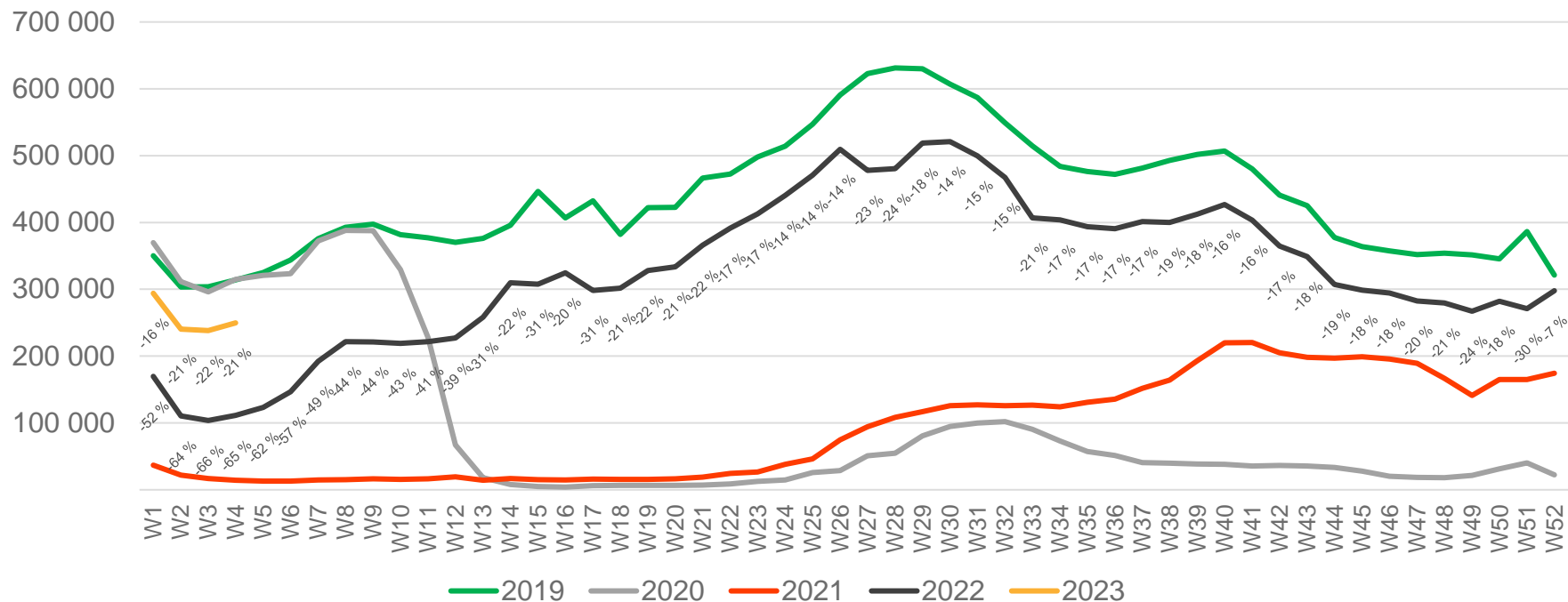
The change is measured from 2019.

Passengers Avinor total per week



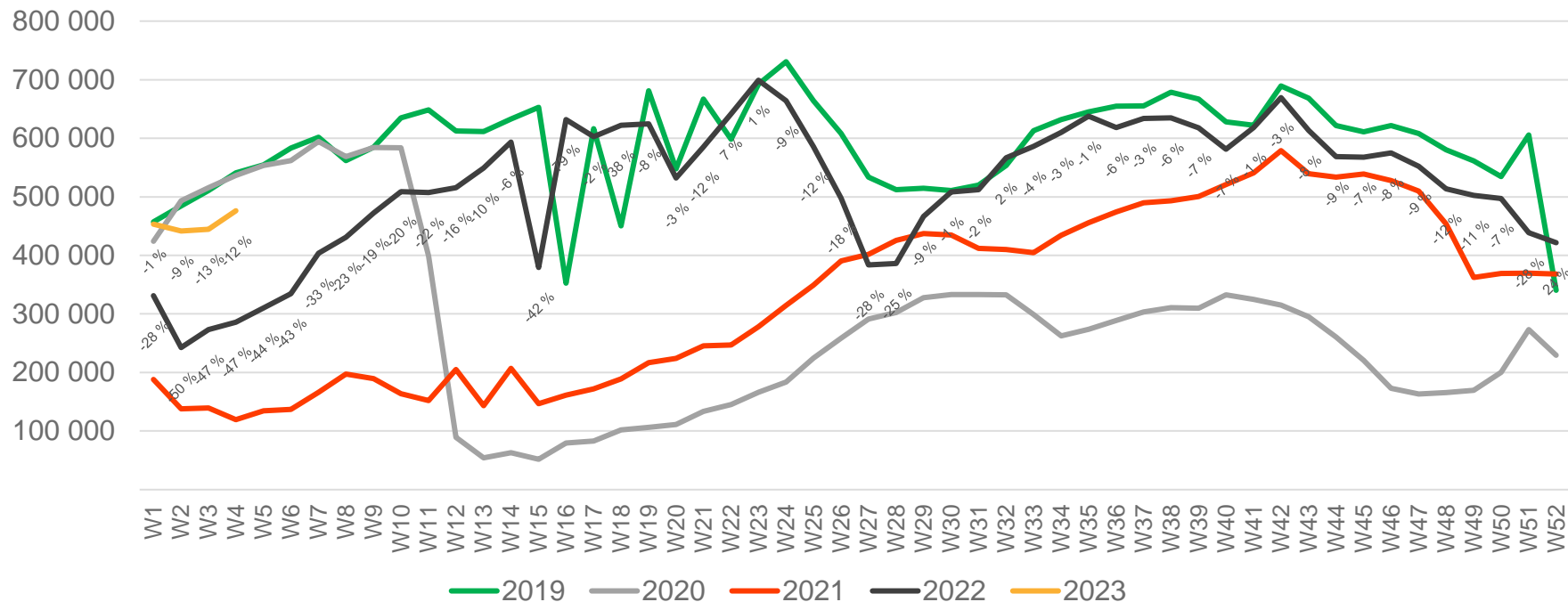
• Week 1 2019 is 31/12-18 – 6/1-19. Week 1 2020 is 30/12-19 – 5/1-20. Week 52 2021 is 27/12-21 – 2/1-22. Week 52 2022 is 26/12-22 – 1/1-23.

Passengers Avinor international per week



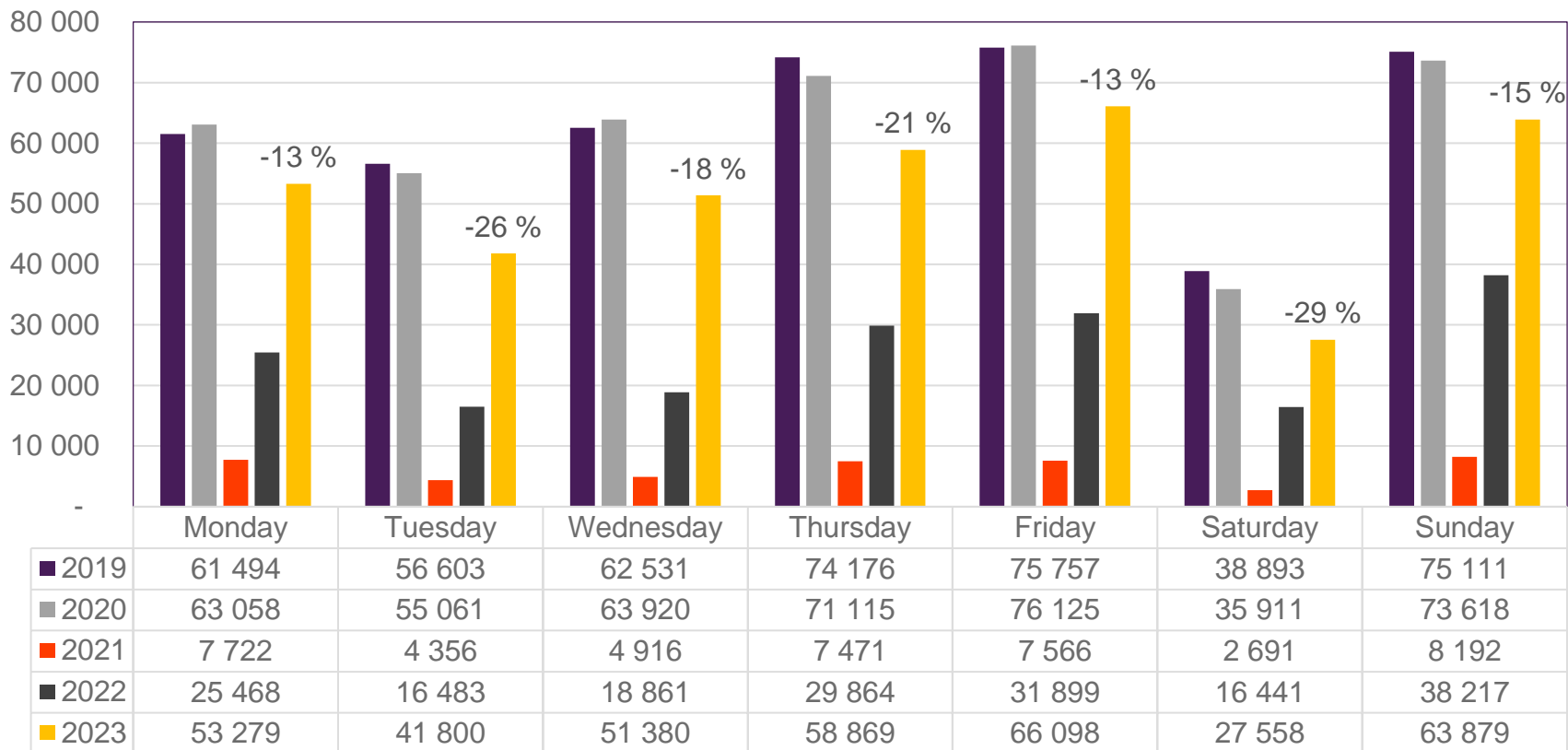
• Week 1 2019 is 31/12-18 – 6/1-19. Week 1 2020 is 30/12-19 – 5/1-20. Week 52 2021 is 27/12-21 – 2/1-22. Week 52 2022 is 26/12-22 – 1/1-23.

Passengers Avinor domestic per week



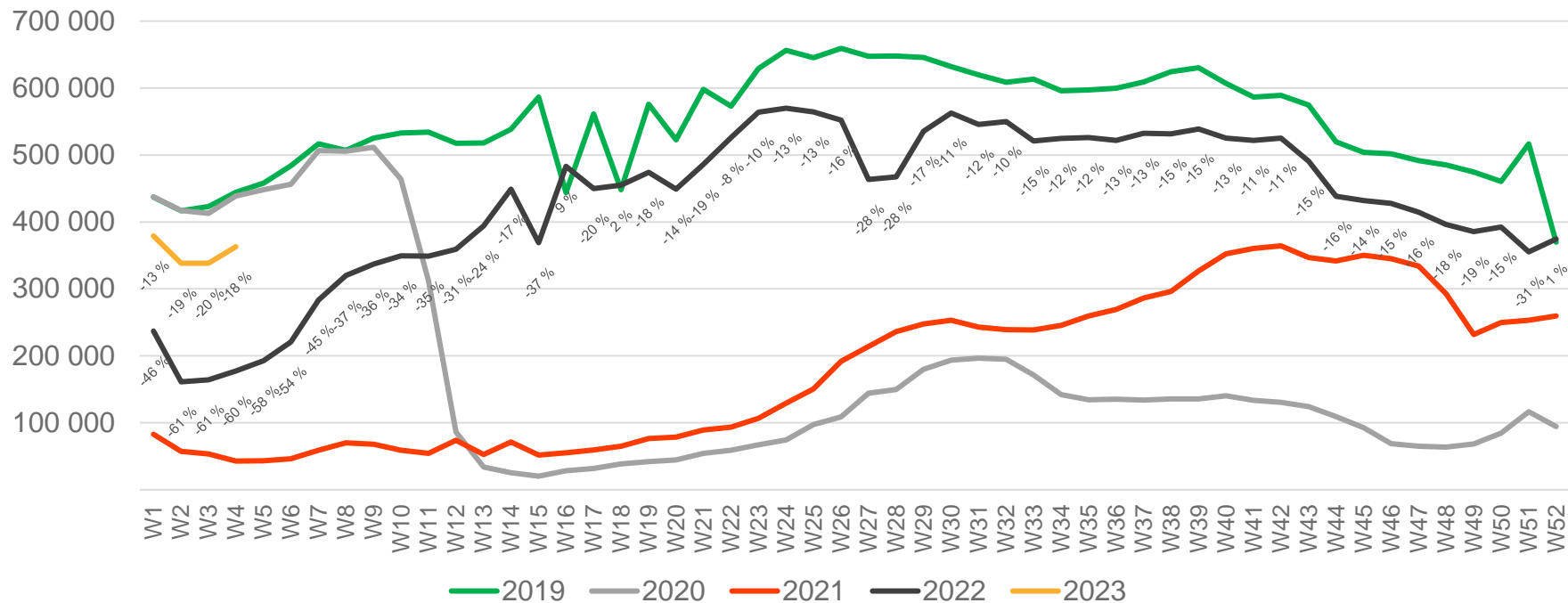
• Week 1 2019 is 31/12-18 – 6/1-19. Week 1 2020 is 30/12-19 – 5/1-20. Week 52 2021 is 27/12-21 – 2/1-22. Week 52 2022 is 26/12-22 – 1/1-23.

Passengers OSL total per day, week 4



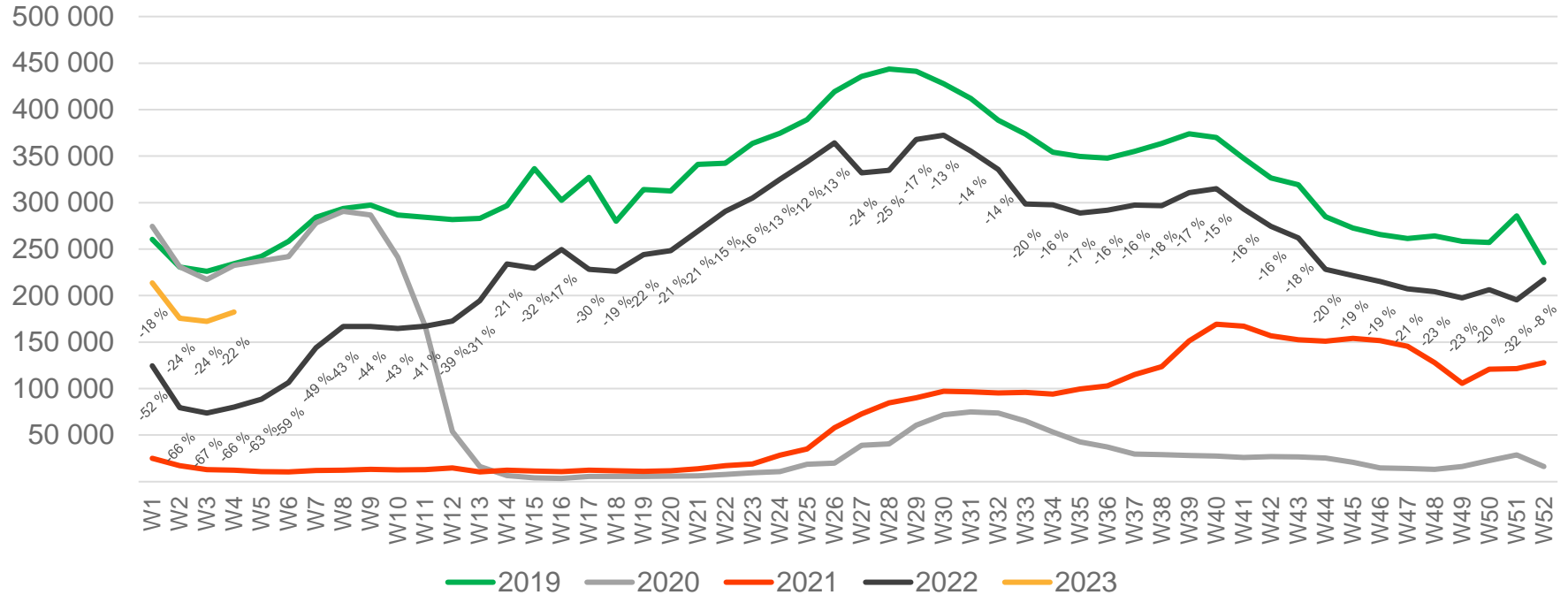
The change is measured from 2019.

Passengers OSL total per week



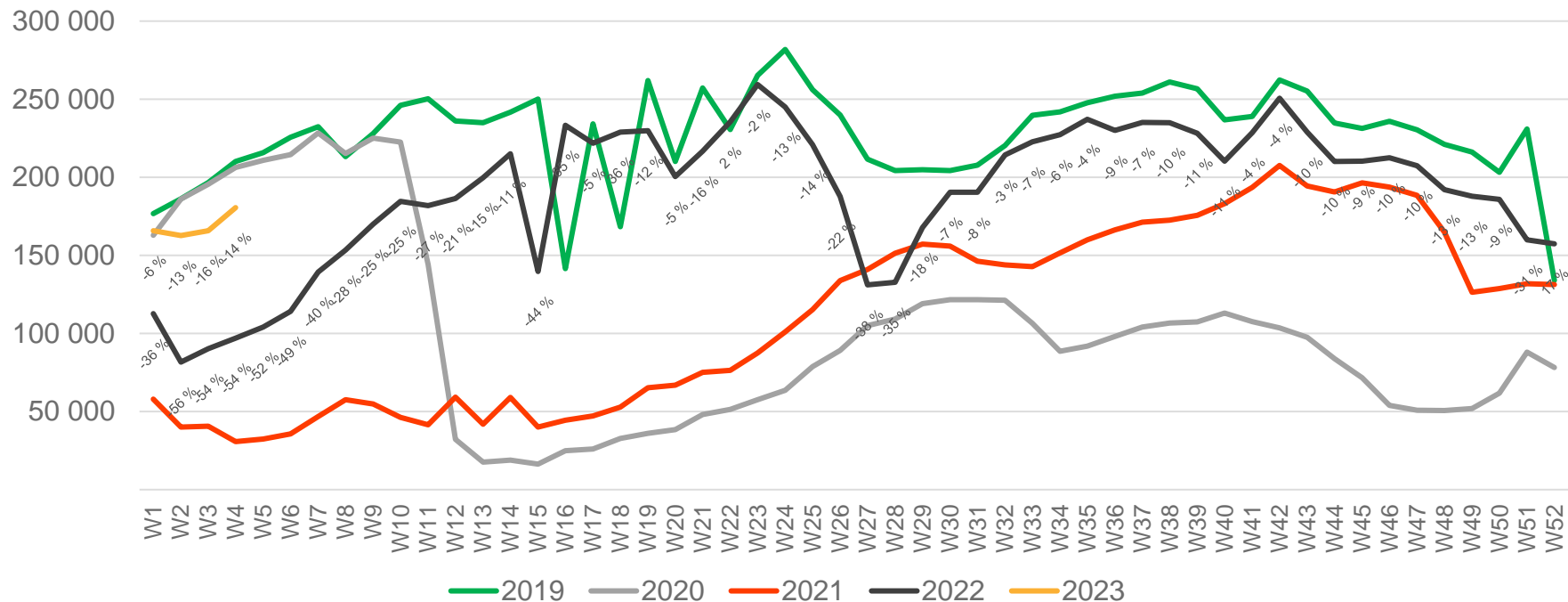
• Week 1 2019 is 31/12-18 – 6/1-19. Week 1 2020 is 30/12-19 – 5/1-20. Week 52 2021 is 27/12-21 – 2/1-22. Week 52 2022 is 26/12-22 – 1/1-23.

Passengers OSL international per week



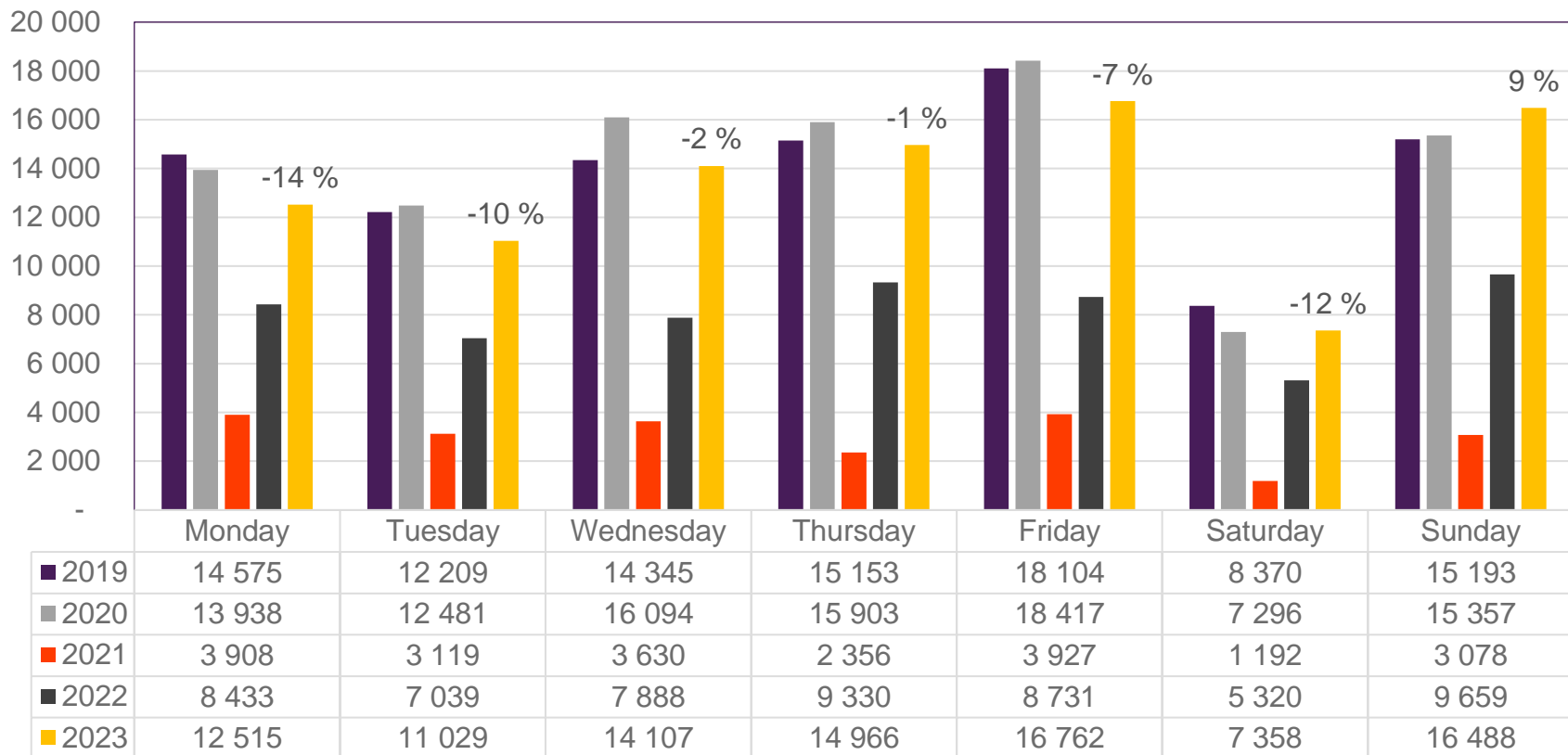
• Week 1 2019 is 31/12-18 – 6/1-19. Week 1 2020 is 30/12-19 – 5/1-20. Week 52 2021 is 27/12-21 – 2/1-22. Week 52 2022 is 26/12-22 – 1/1-23.

Passengers OSL domestic per week



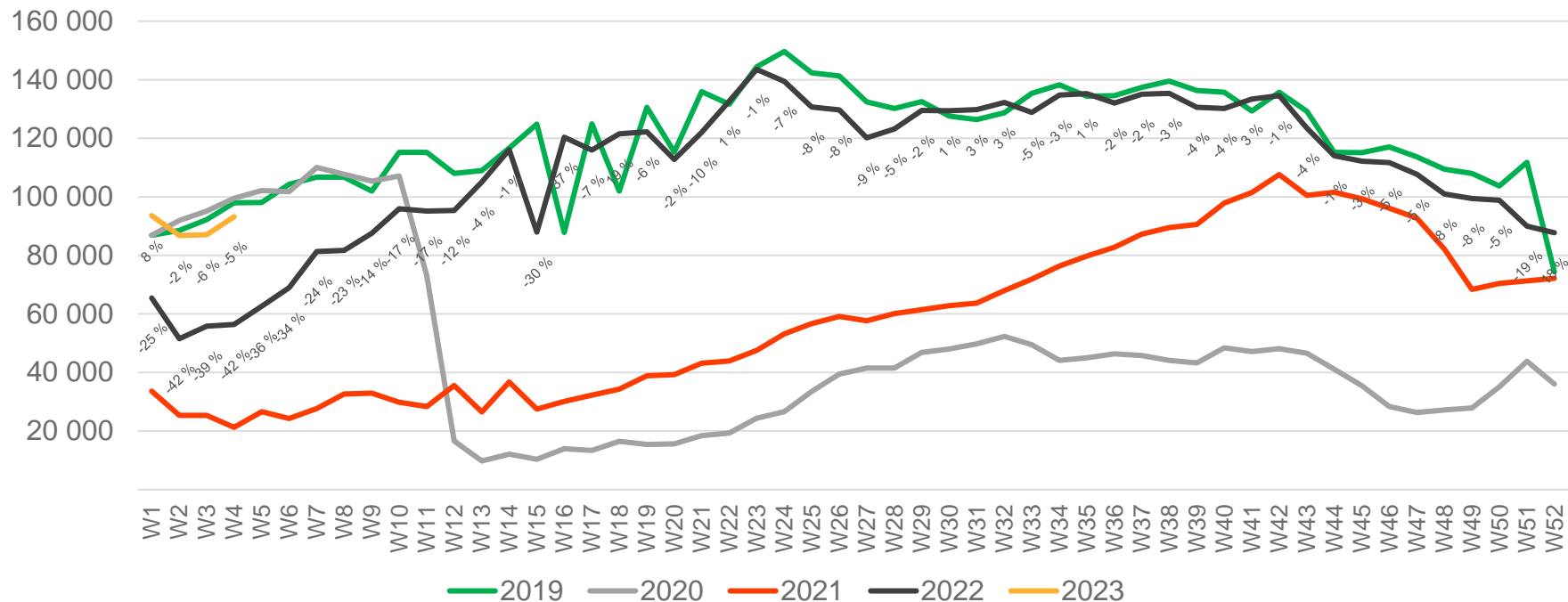
• Week 1 2019 is 31/12-18 – 6/1-19. Week 1 2020 is 30/12-19 – 5/1-20. Week 52 2021 is 27/12-21 – 2/1-22. Week 52 2022 is 26/12-22 – 1/1-23.

Passengers BGO total per day, week 4



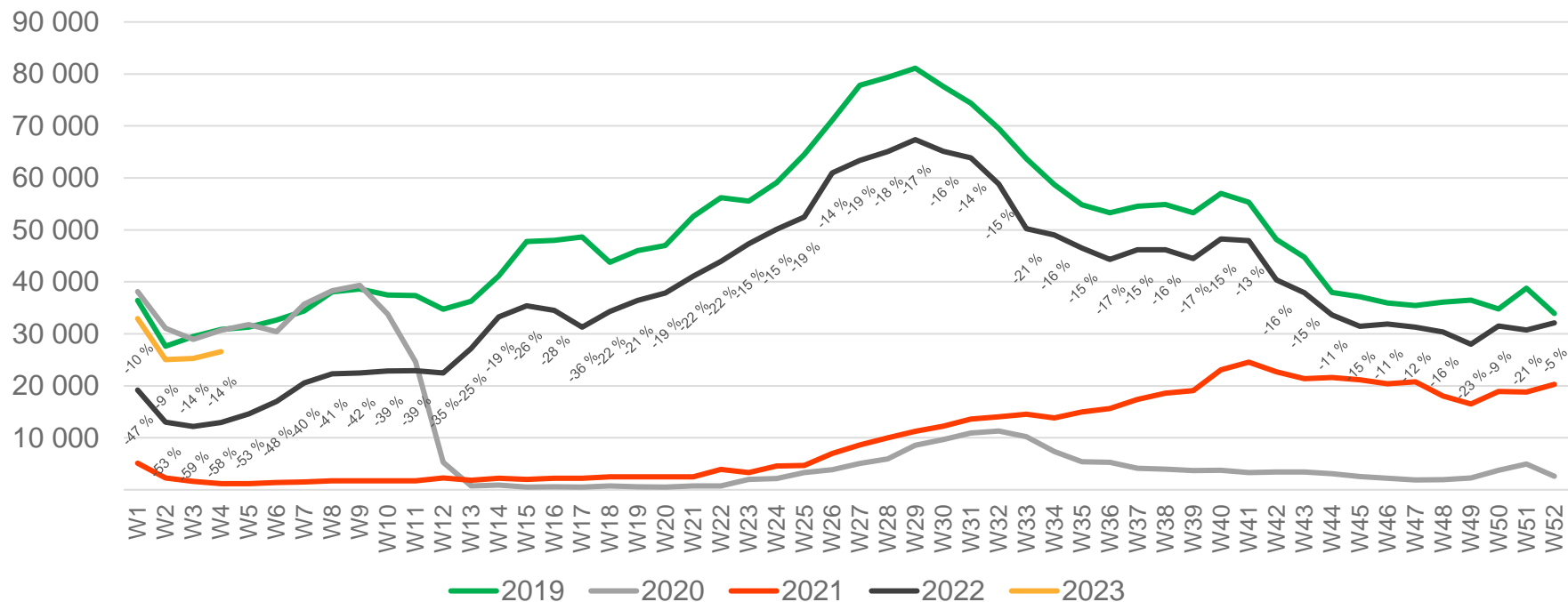
The change is measured from 2019.

Passengers BGO total per week



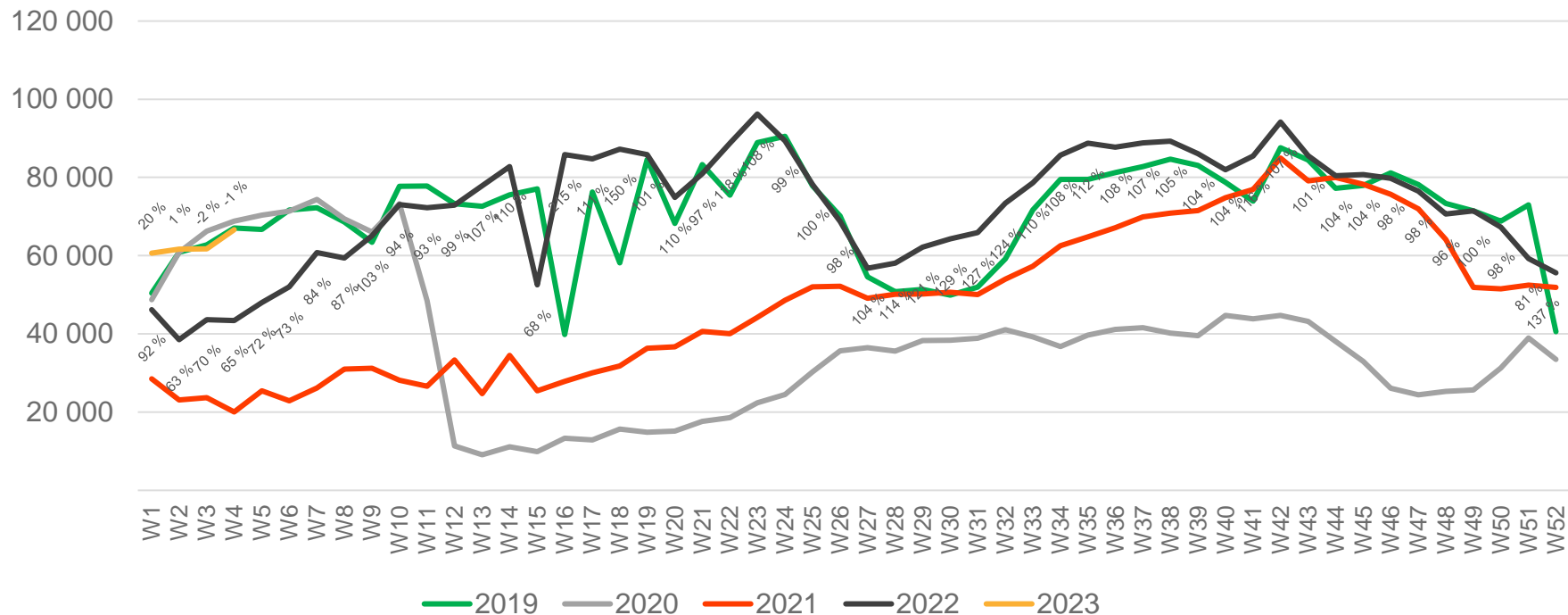
• Week 1 2019 is 31/12-18 – 6/1-19. Week 1 2020 is 30/12-19 – 5/1-20. Week 52 2021 is 27/12-21 – 2/1-22. Week 52 2022 is 26/12-22 – 1/1-23.

Passengers BGO international per week



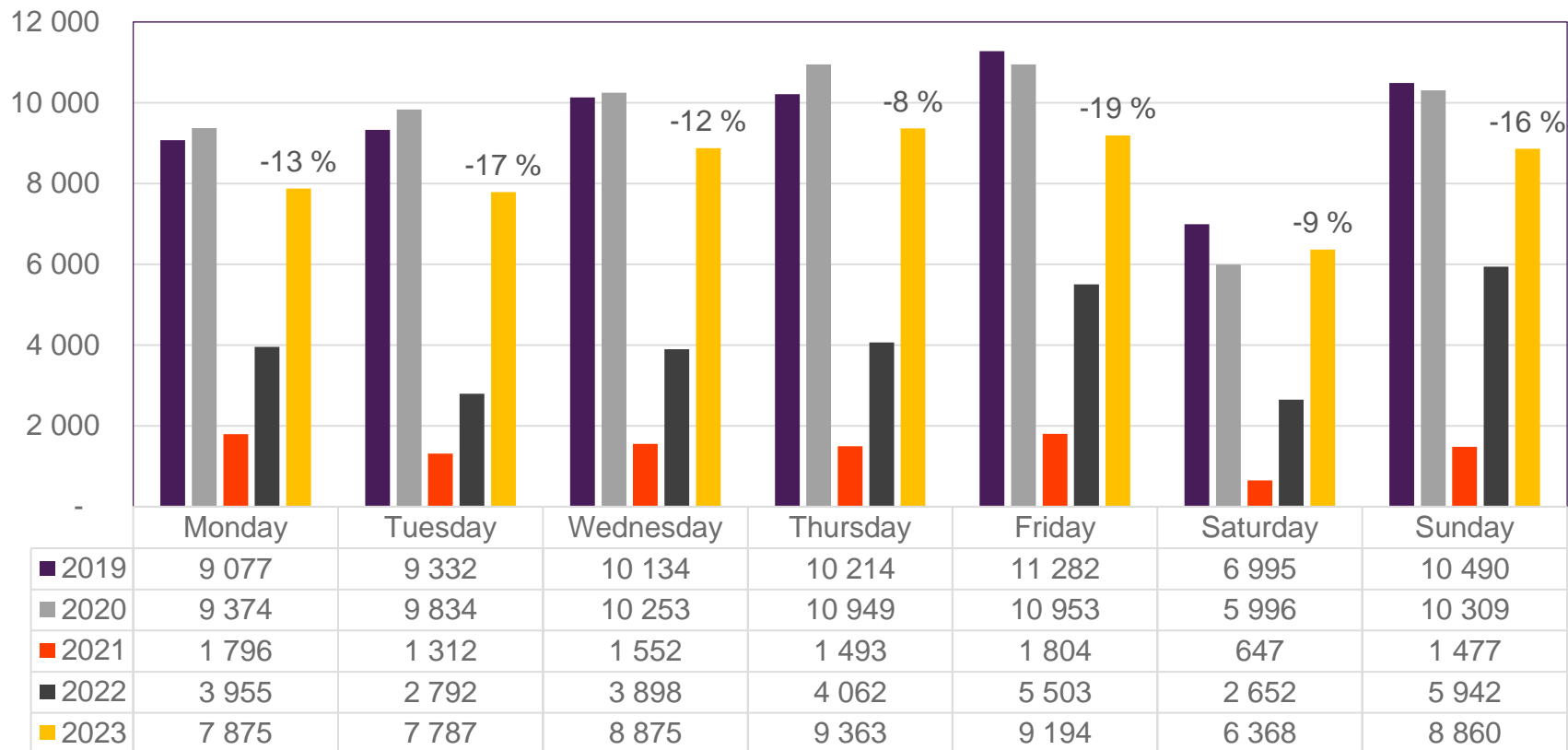
• Week 1 2019 is 31/12-18 – 6/1-19. Week 1 2020 is 30/12-19 – 5/1-20. Week 52 2021 is 27/12-21 – 2/1-22. Week 52 2022 is 26/12-22 – 1/1-23.

Passengers BGO domestic per week



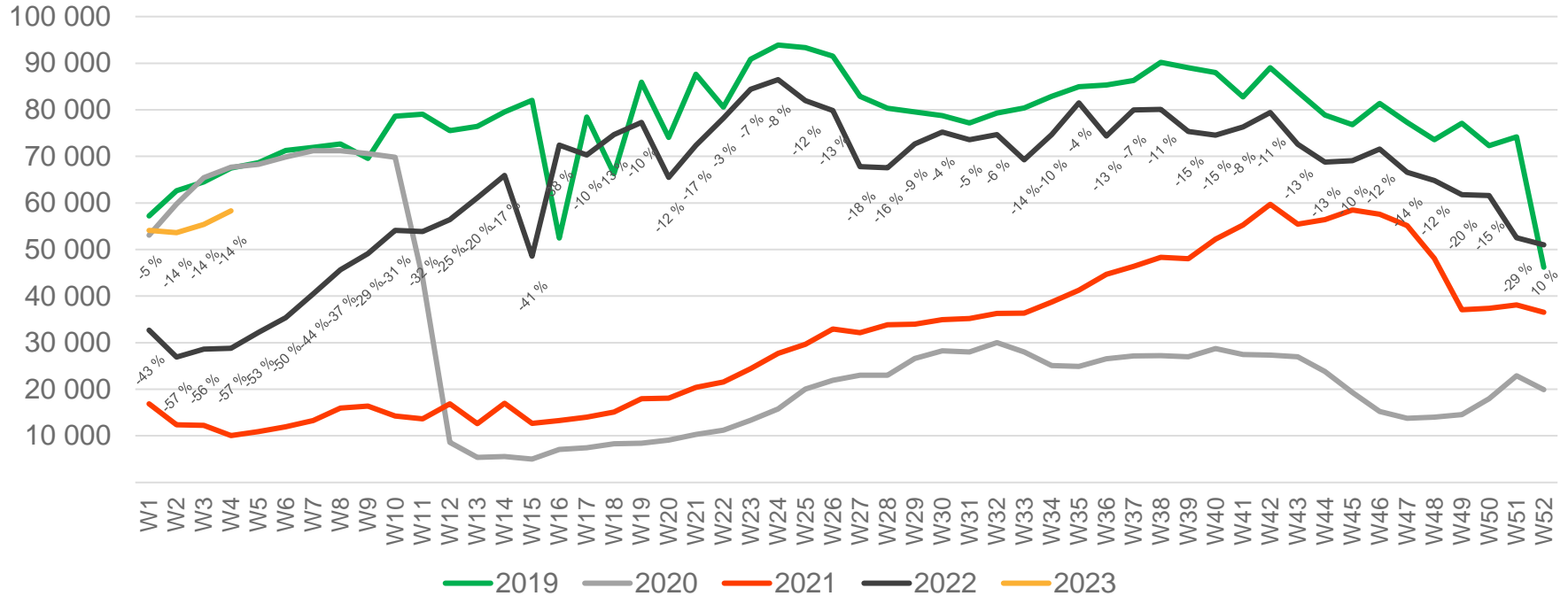
• Week 1 2019 is 31/12-18 – 6/1-19. Week 1 2020 is 30/12-19 – 5/1-20. Week 52 2021 is 27/12-21 – 2/1-22. Week 52 2022 is 26/12-22 – 1/1-23.

Passengers SVG total per day, week 4



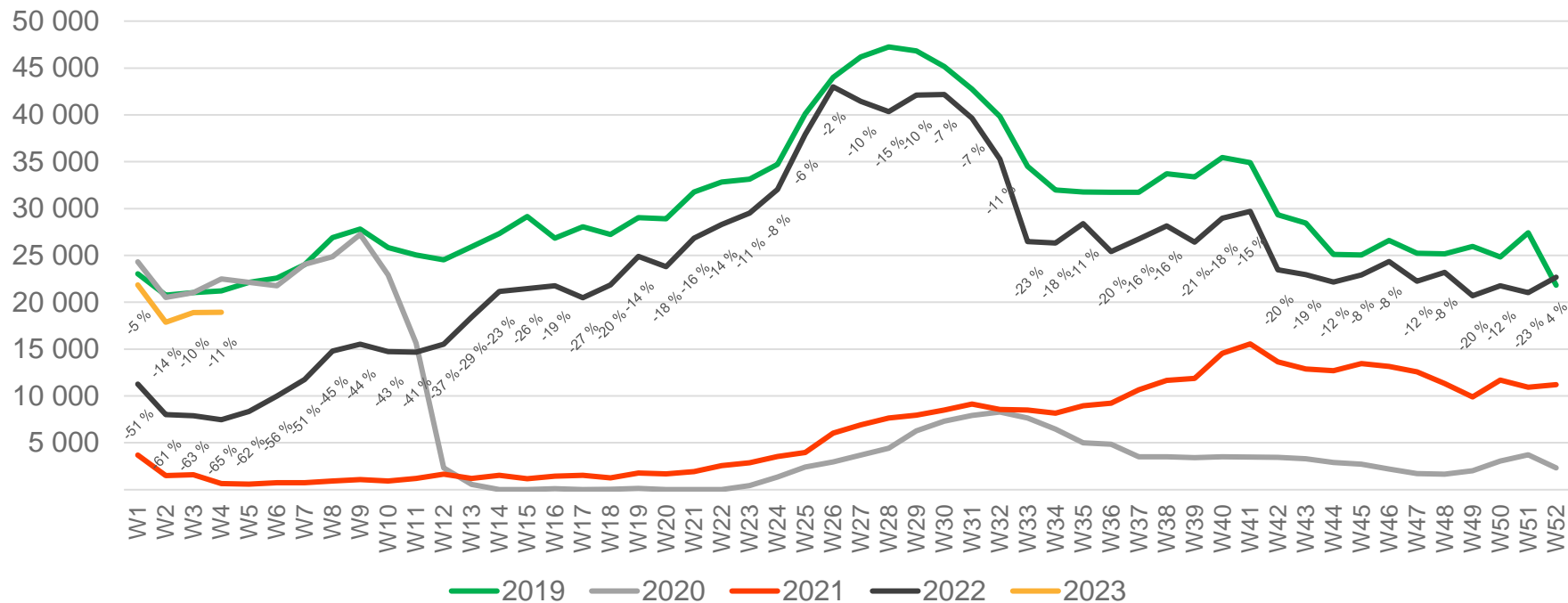
The change is measured from 2019.

Passengers SVG total per week



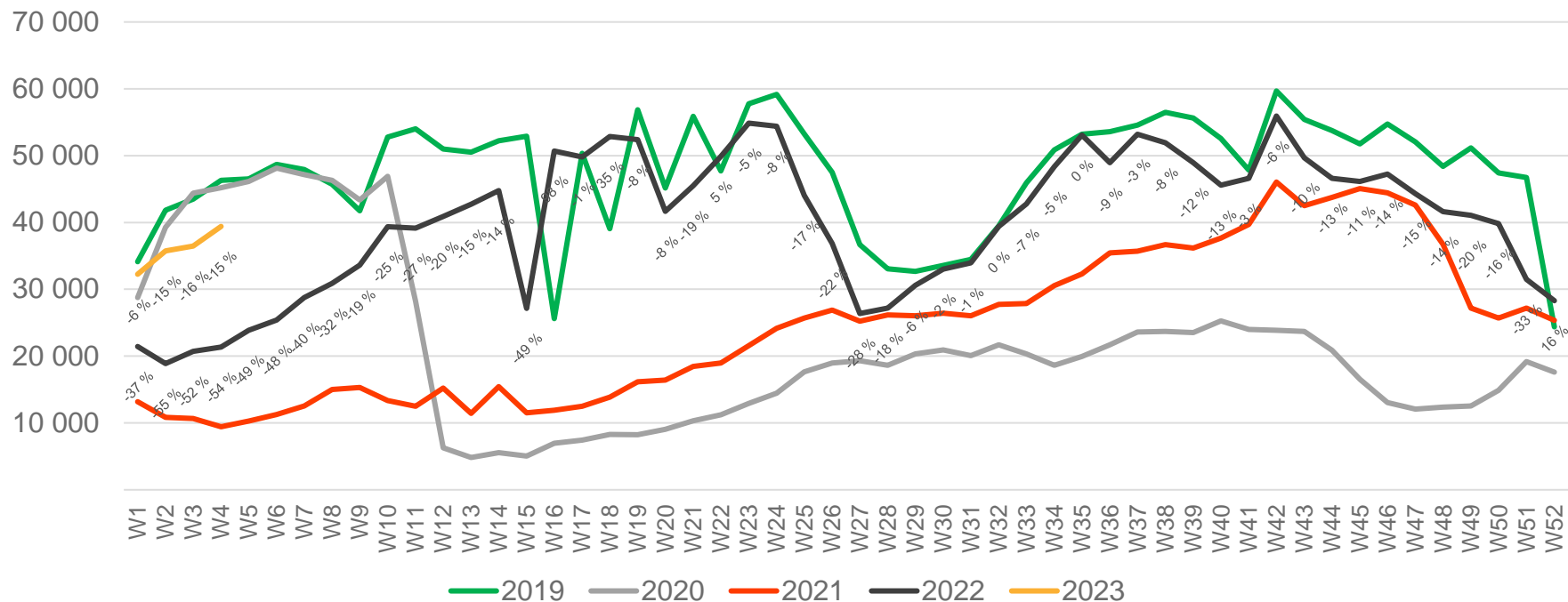
• Week 1 2019 is 31/12-18 – 6/1-19. Week 1 2020 is 30/12-19 – 5/1-20. Week 52 2021 is 27/12-21 – 2/1-22. Week 52 2022 is 26/12-22 – 1/1-23.

Passengers SVG international per week



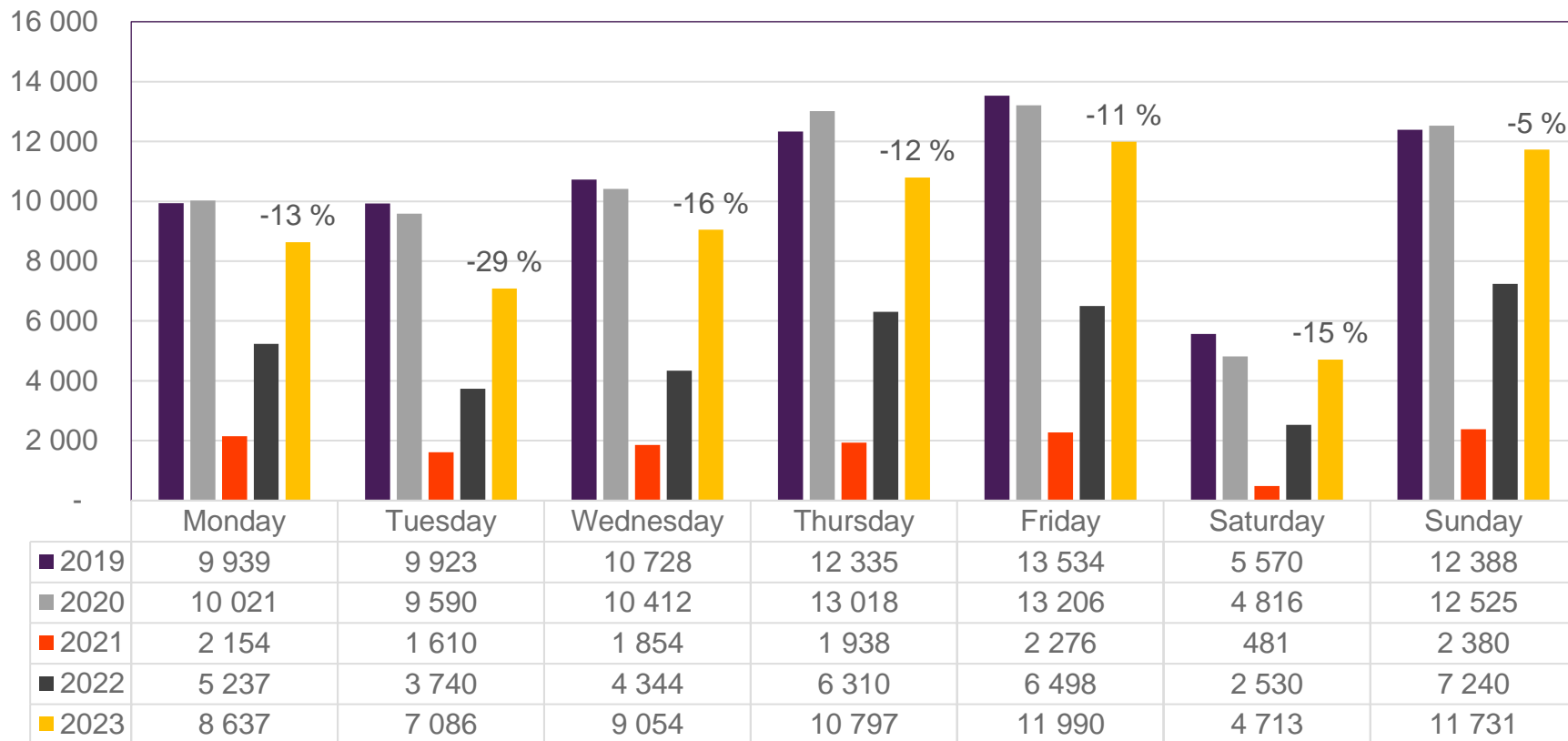
• Week 1 2019 is 31/12-18 – 6/1-19. Week 1 2020 is 30/12-19 – 5/1-20. Week 52 2021 is 27/12-21 – 2/1-22. Week 52 2022 is 26/12-22 – 1/1-23.

Passengers SVG domestic per week



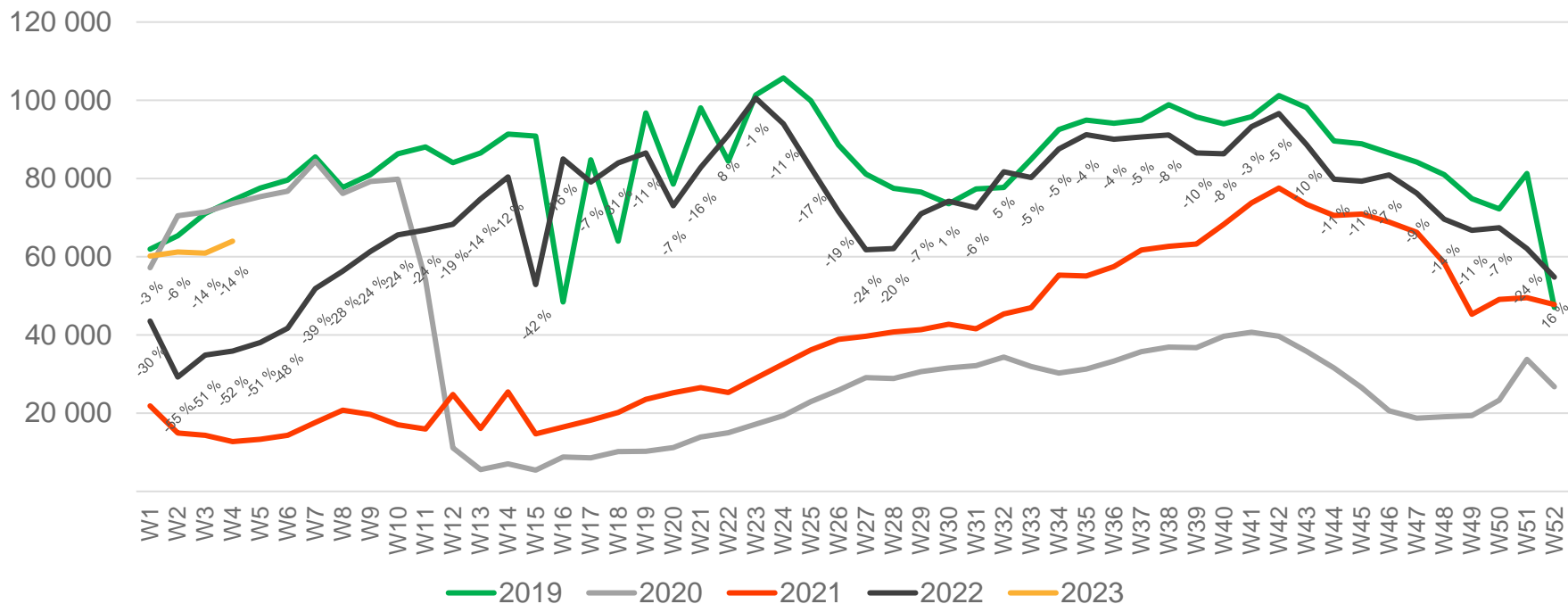
• Week 1 2019 is 31/12-18 – 6/1-19. Week 1 2020 is 30/12-19 – 5/1-20. Week 52 2021 is 27/12-21 – 2/1-22. Week 52 2022 is 26/12-22 – 1/1-23.

Passengers TRD total per day, week 4



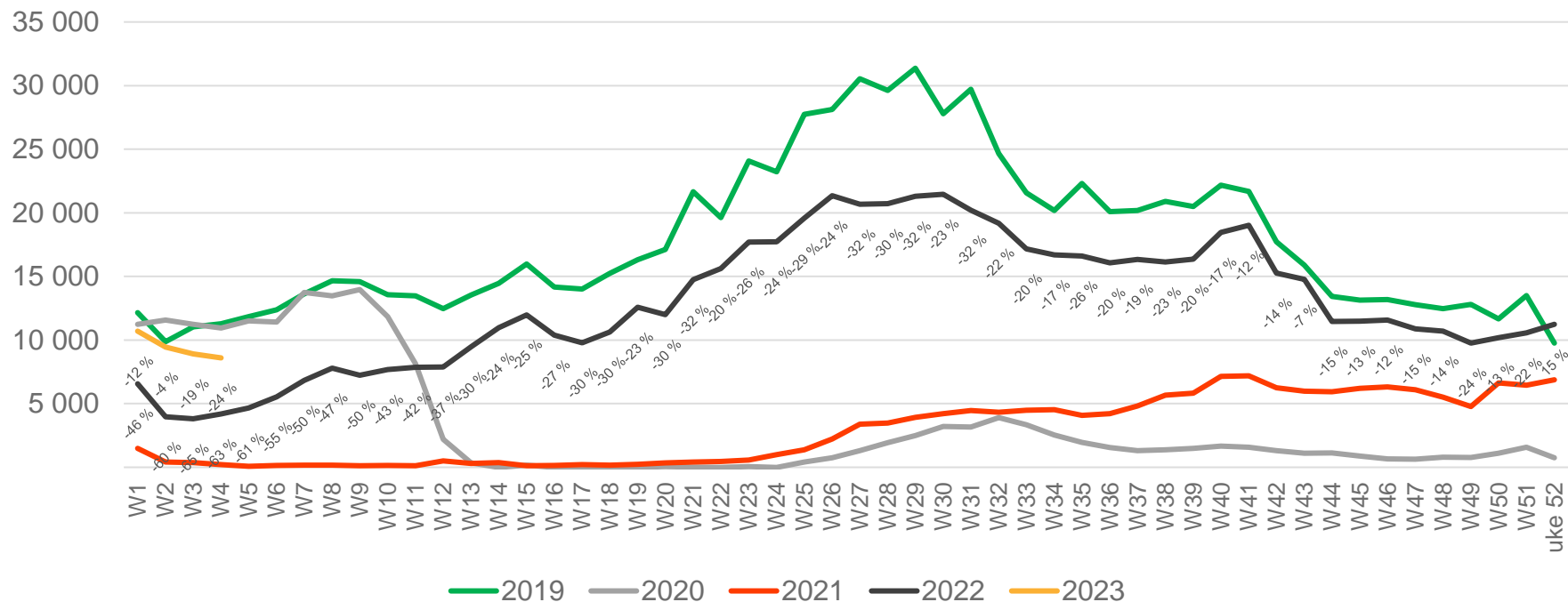
The change is measured from 2019.

Passengers TRD total per week



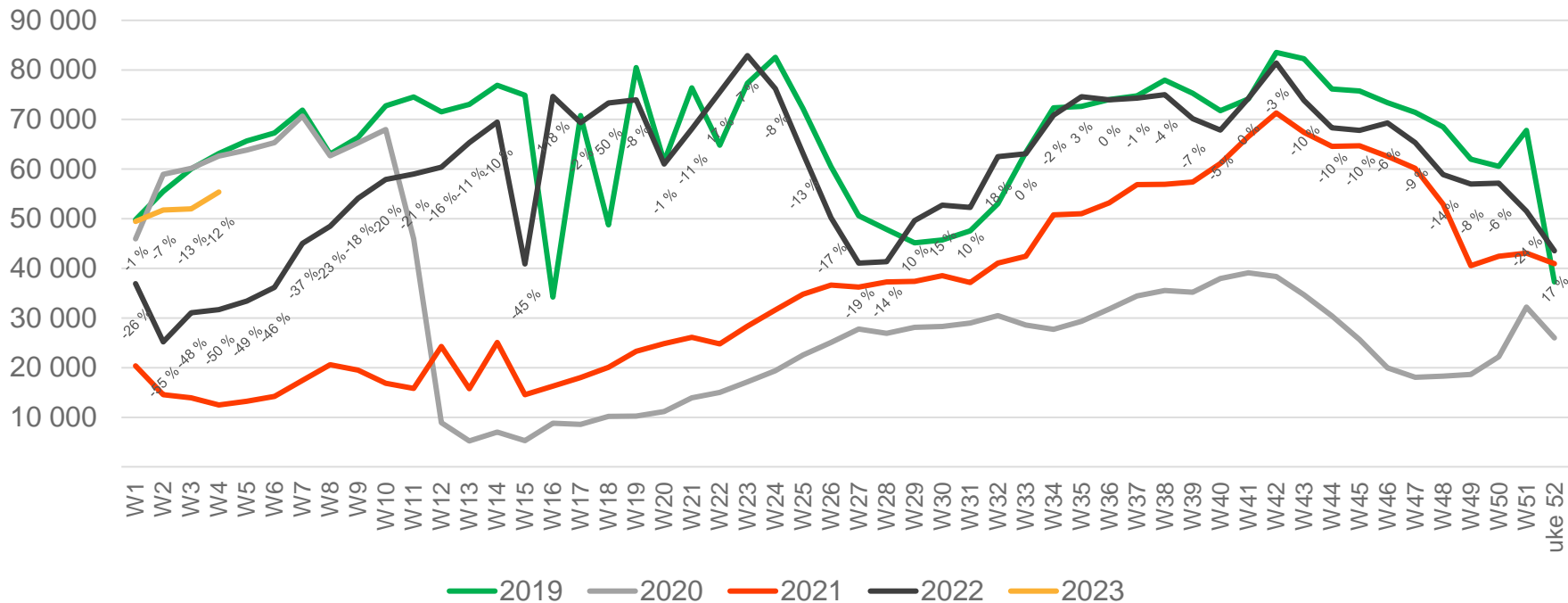
• Week 1 2019 is 31/12-18 – 6/1-19. Week 1 2020 is 30/12-19 – 5/1-20. Week 52 2021 is 27/12-21 – 2/1-22. Week 52 2022 is 26/12-22 – 1/1-23.

Passengers TRD international per week



• Week 1 2019 is 31/12-18 – 6/1-19. Week 1 2020 is 30/12-19 – 5/1-20. Week 52 2021 is 27/12-21 – 2/1-22. Week 52 2022 is 26/12-22 – 1/1-23.

Passengers TRD domestic per week



• Week 1 2019 is 31/12-18 – 6/1-19. Week 1 2020 is 30/12-19 – 5/1-20. Week 52 2021 is 27/12-21 – 2/1-22. Week 52 2022 is 26/12-22 – 1/1-23.