



Passenger numbers per week

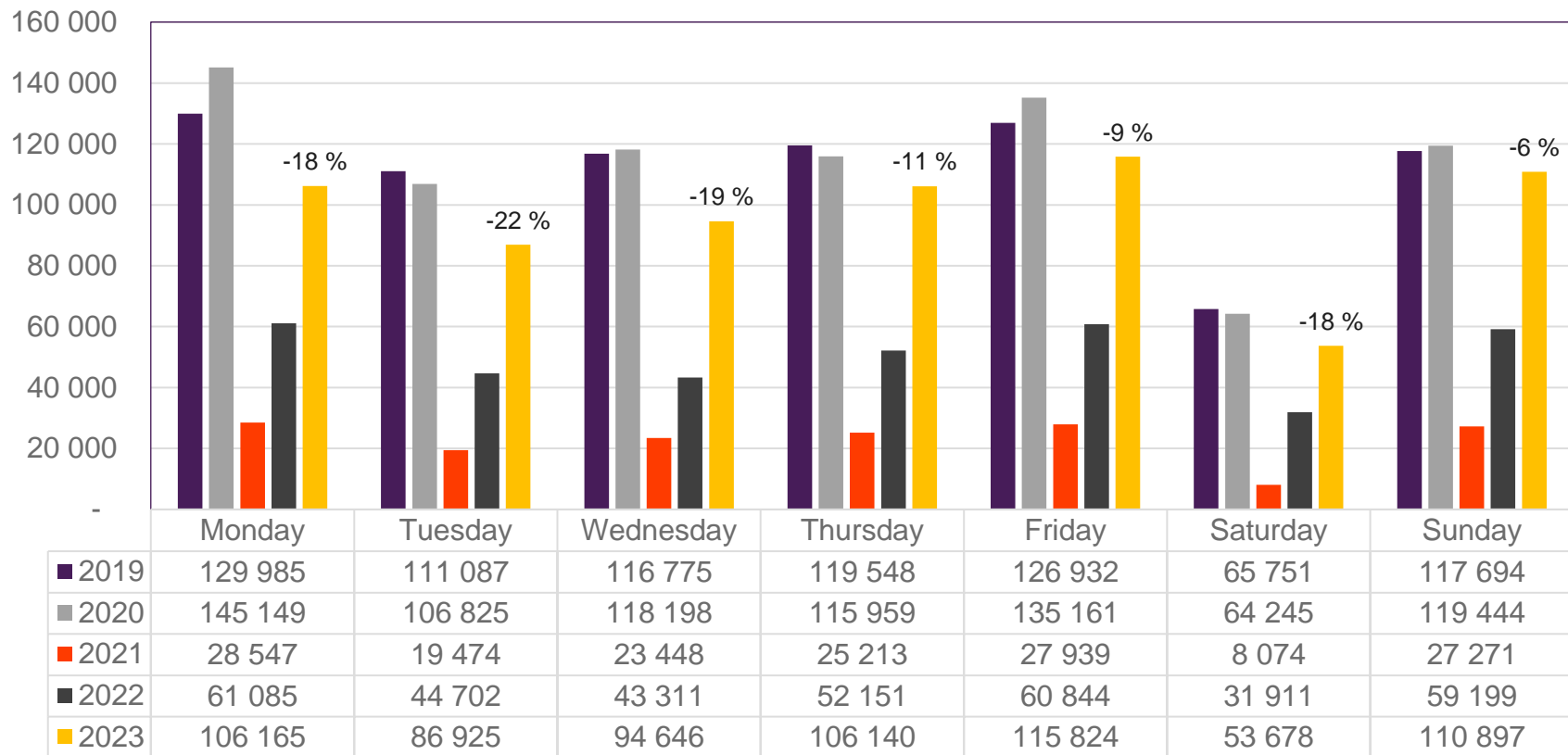
## Preliminary figures

- The figures for the previous week are preliminary. It takes some time for all passenger numbers to be reported, so the figures for the previous week may be 1-2% lower than the final figures.
- The figures are taken from Avinor's traffic database.
- Week 1 2019 include numbers from 2018 (31/12 2018)  
Week 1 2020 include numbers from 2019 (30-31/12 2019)  
Week 52 2021 include numbers from 2022 (1-2/1 2022)  
Week 52 2022 include numbers from 2023 (1/1 2023)

# Top 10 airports, total week 2

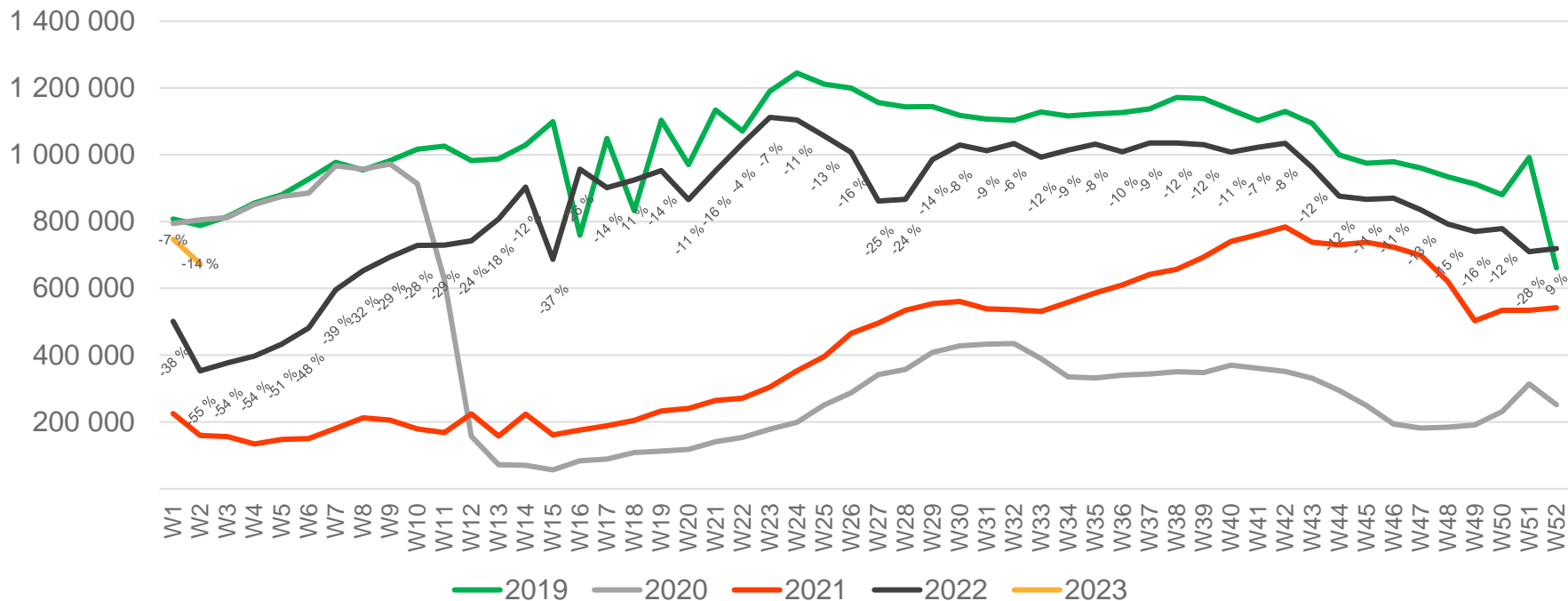
Airport	2019	2020	2021	2022	2023	2022 vs. 2019		2022 vs. 2021	
						Change	Change %	Change	Change %
Oslo Gardermoen	416 828	417 087	57 225	161 082	334 497	-82 331	-20 %	173 415	108 %
Bergen Flesland	88 501	91 917	25 382	51 562	86 287	-2 214	-3 %	34 725	67 %
Trondheim Værnes	65 386	70 505	14 955	29 197	60 971	-4 415	-7 %	31 774	109 %
Stavanger Sola	62 604	59 768	12 350	26 919	53 399	-9 205	-15 %	26 480	98 %
Tromsø Langnes	40 069	43 537	12 315	23 518	38 687	-1 382	-3 %	15 169	64 %
Bodø	23 219	26 518	8 262	13 538	22 452	-767	-3 %	8 914	66 %
Ålesund Vigra	16 411	17 763	3 883	7 253	13 623	-2 788	-17 %	6 370	88 %
Kristiansand Kjevik	16 821	15 615	3 431	6 047	11 783	-5 038	-30 %	5 736	95 %
Harstad/Narvik Evenes	10 109	11 411	2 660	6 055	9 465	-644	-6 %	3 410	56 %
Bardufoss	3 538	4 343	1 424	1 948	3 085	-453	-13 %	1 137	58 %

# Passengers Avinor total per day, week 2



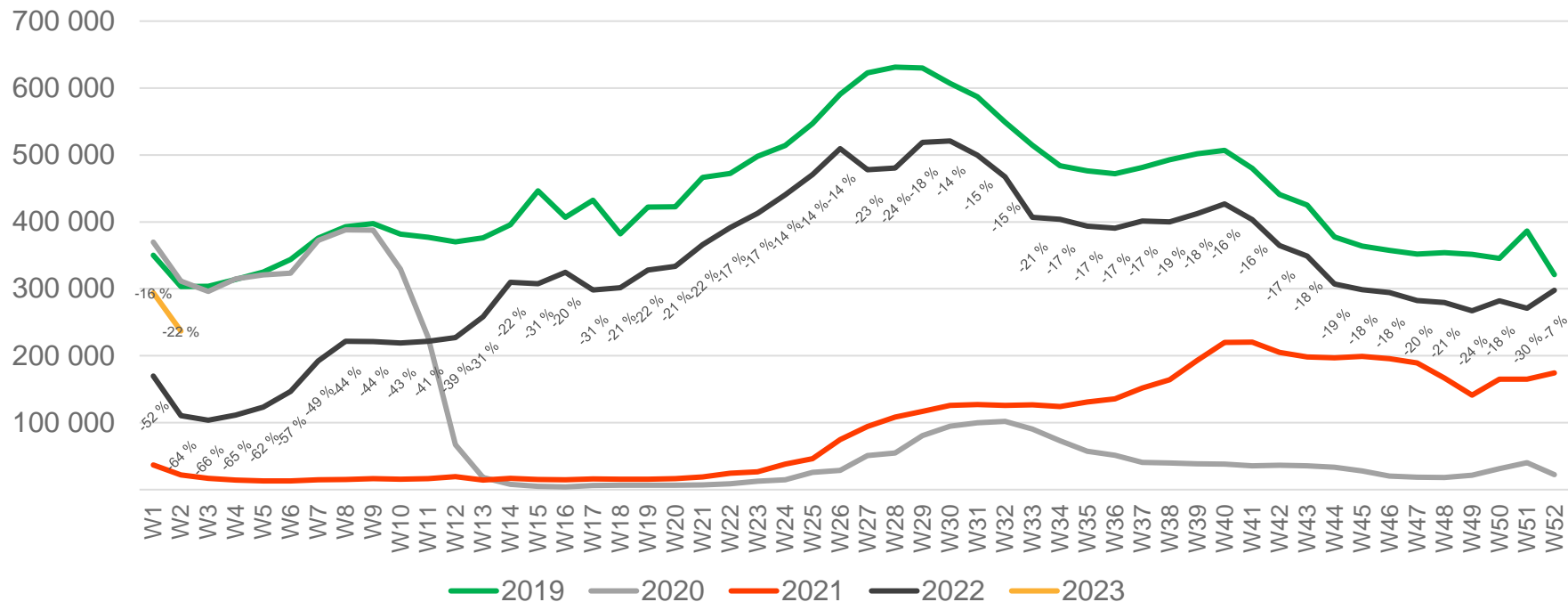
The change is measured from 2019.

# Passengers Avinor total per week



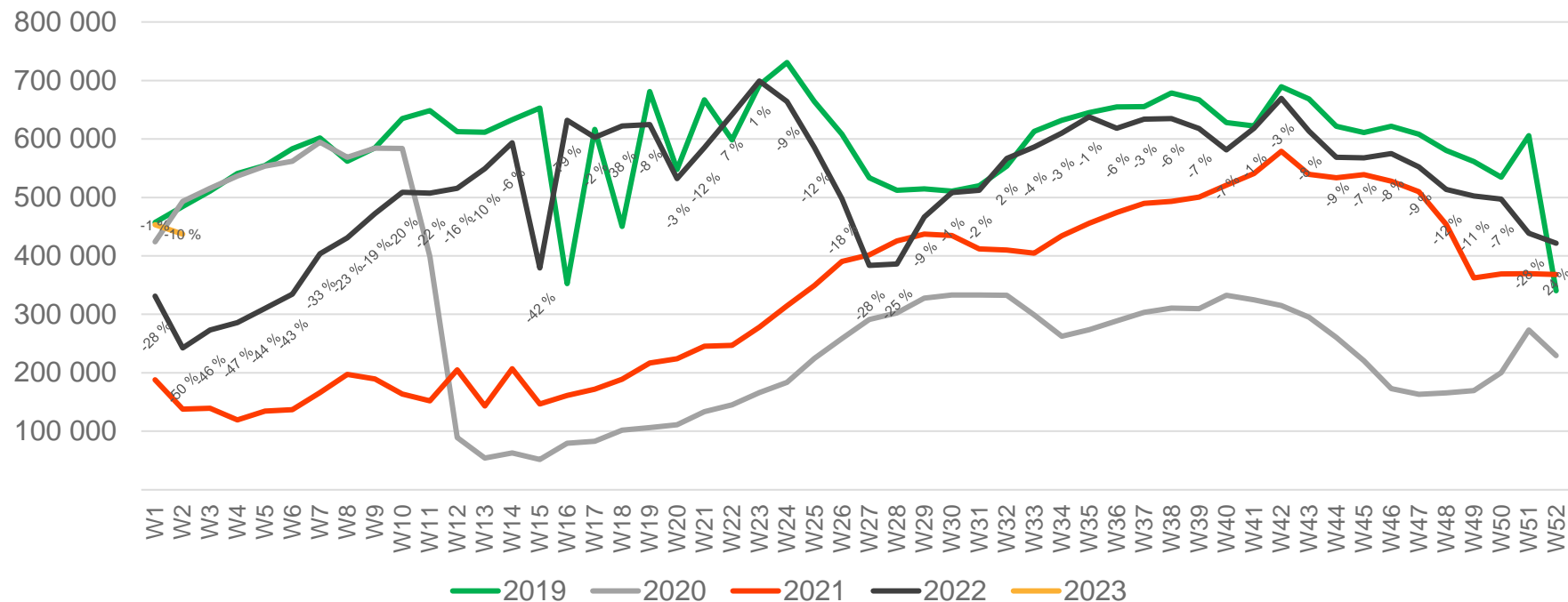
• Week 1 2019 is 31/12-18 – 6/1-19. Week 1 2020 is 30/12-19 – 5/1-20. Week 52 2021 is 27/12-21 – 2/1-22. Week 52 2022 is 26/12-22 – 1/1-23.

# Passengers Avinor international per week



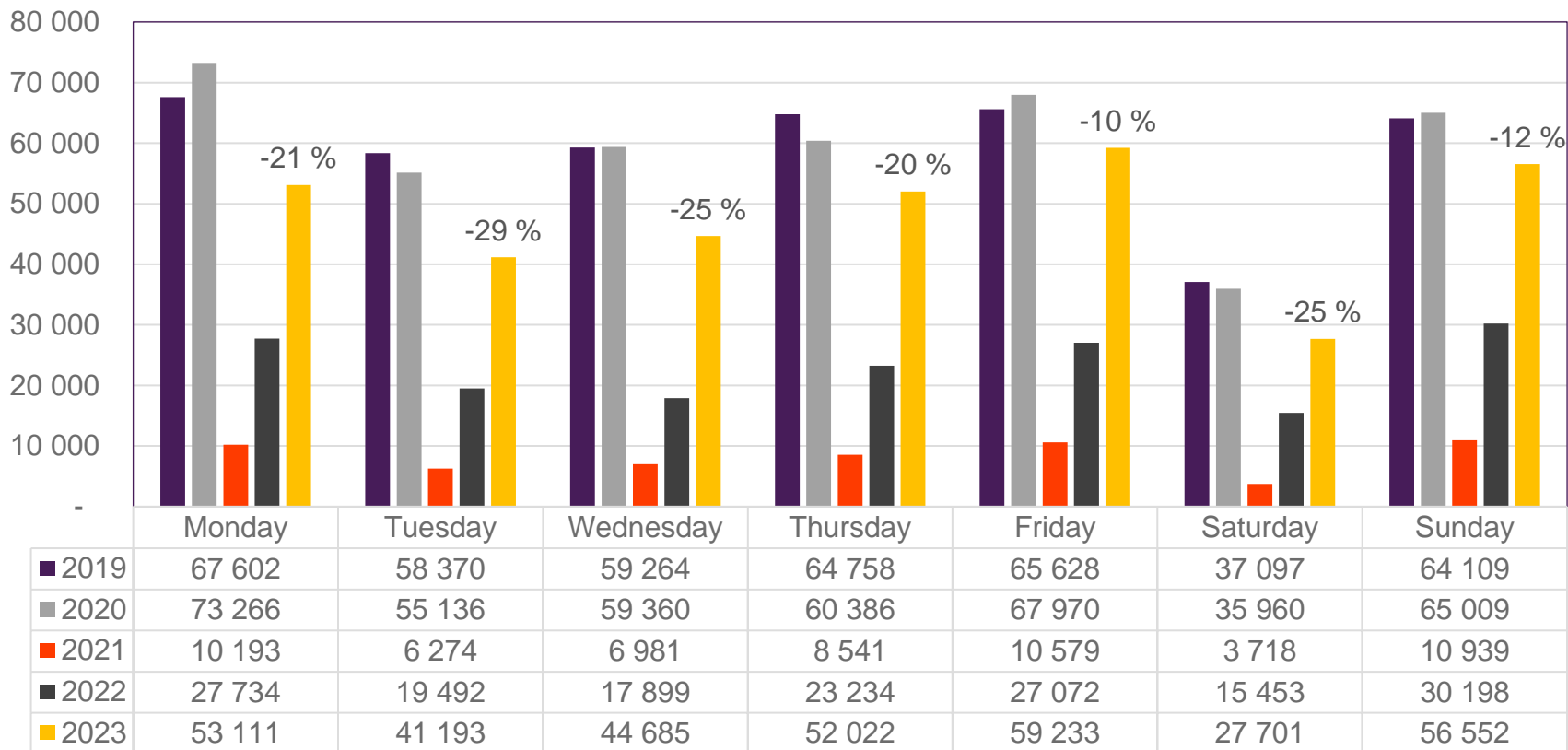
• Week 1 2019 is 31/12-18 – 6/1-19. Week 1 2020 is 30/12-19 – 5/1-20. Week 52 2021 is 27/12-21 – 2/1-22. Week 52 2022 is 26/12-22 – 1/1-23.

# Passengers Avinor domestic per week



• Week 1 2019 is 31/12-18 – 6/1-19. Week 1 2020 is 30/12-19 – 5/1-20. Week 52 2021 is 27/12-21 – 2/1-22. Week 52 2022 is 26/12-22 – 1/1-23.

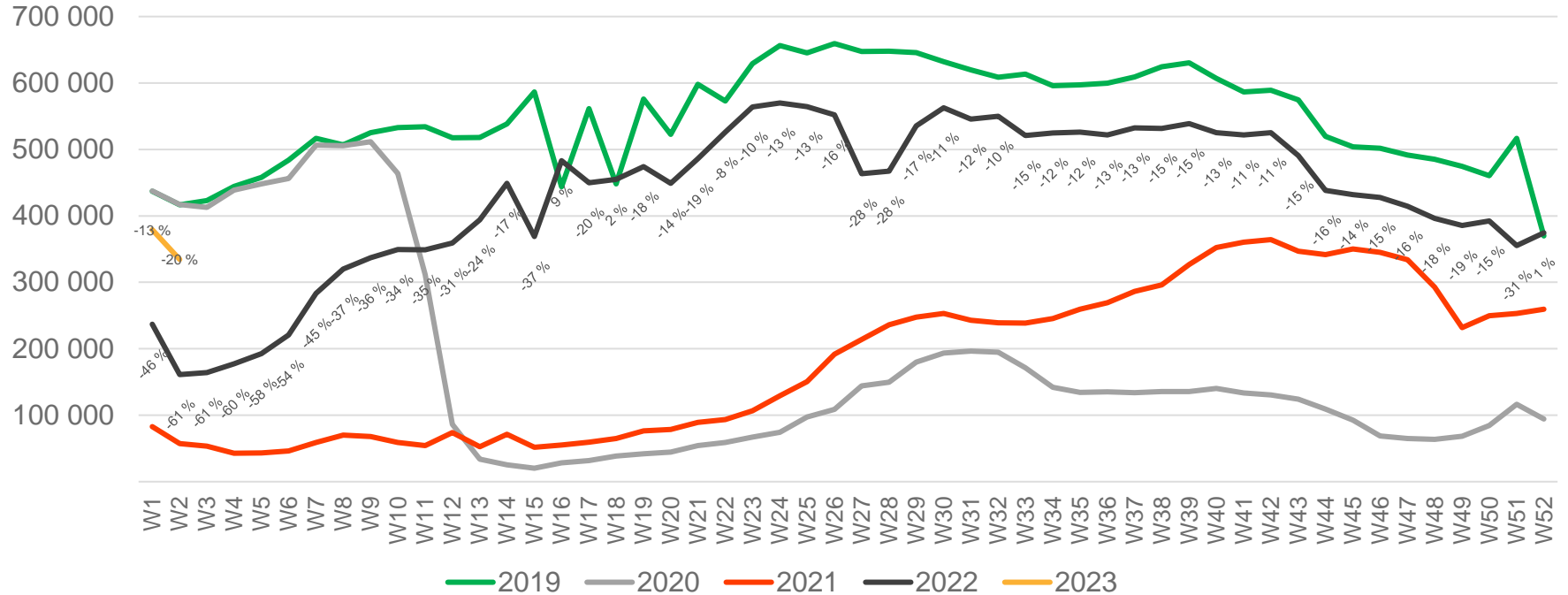
# Passengers OSL total per day, week 2



The change is measured from 2019.

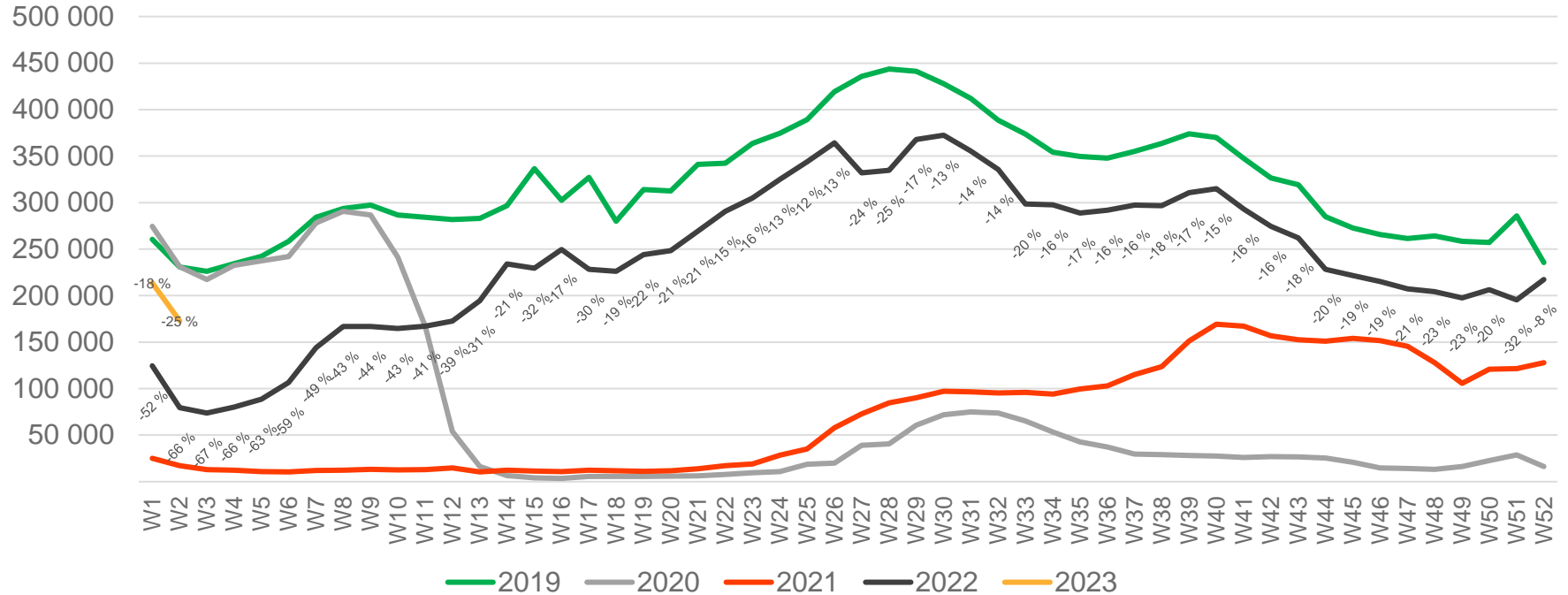


# Passengers OSL total per week



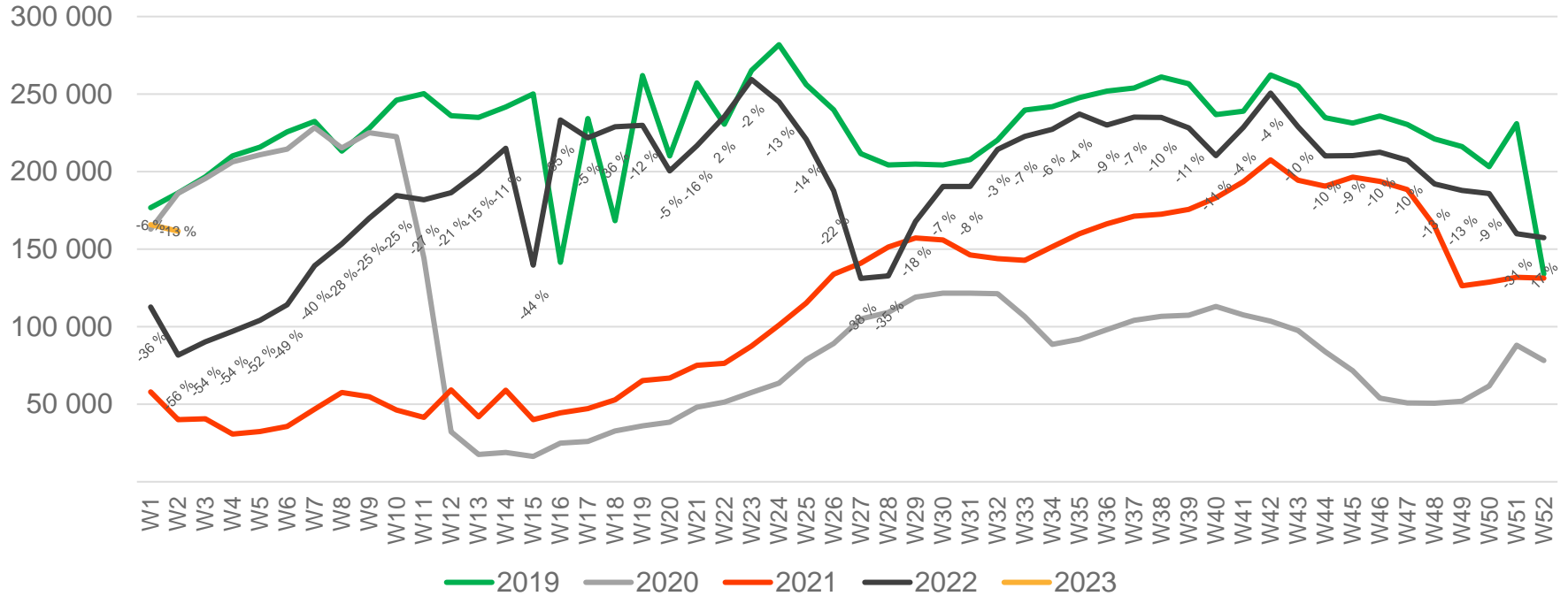
• Week 1 2019 is 31/12-18 – 6/1-19. Week 1 2020 is 30/12-19 – 5/1-20. Week 52 2021 is 27/12-21 – 2/1-22. Week 52 2022 is 26/12-22 – 1/1-23.

# Passengers OSL international per week



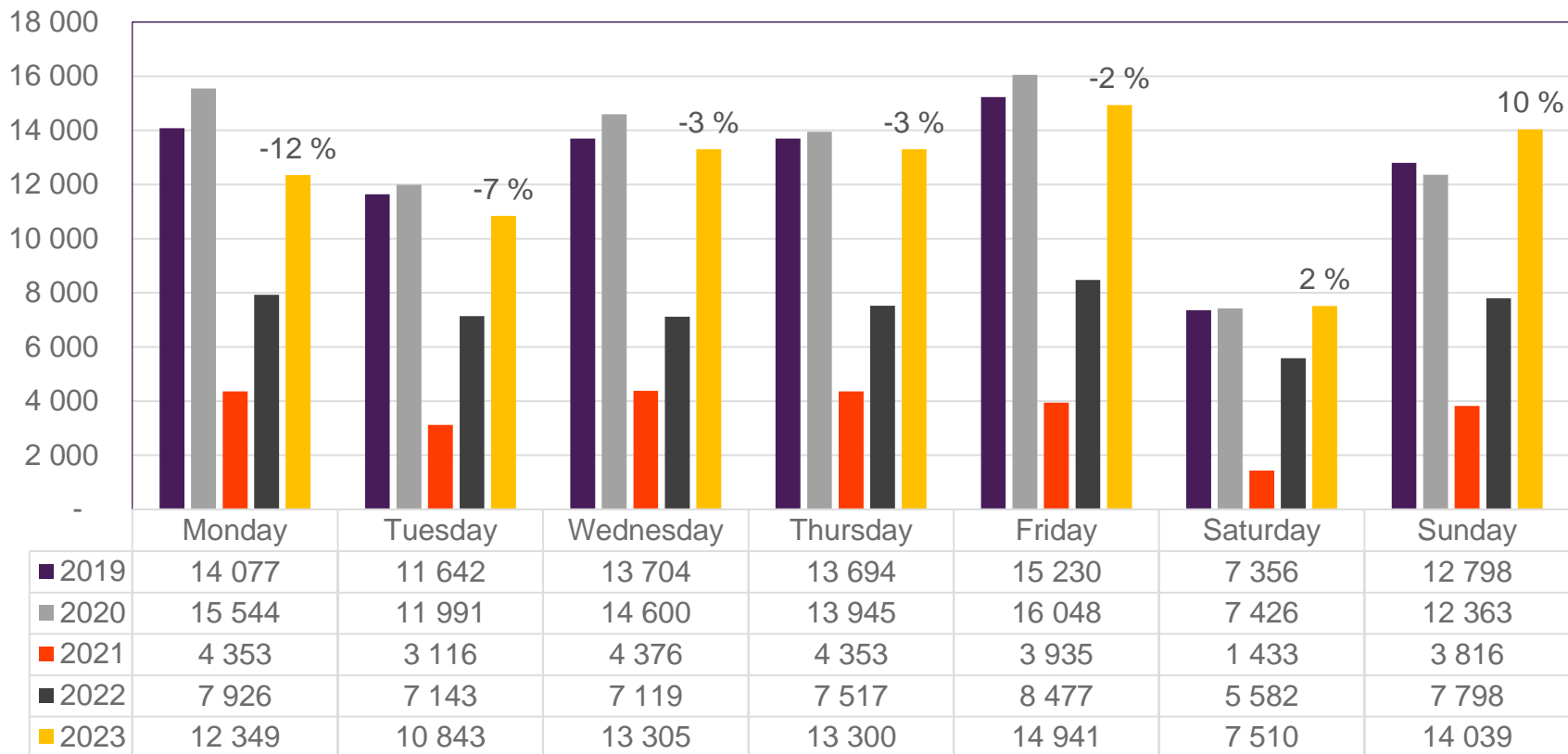
• Week 1 2019 is 31/12-18 – 6/1-19. Week 1 2020 is 30/12-19 – 5/1-20. Week 52 2021 is 27/12-21 – 2/1-22. Week 52 2022 is 26/12-22 – 1/1-23.

# Passengers OSL domestic per week



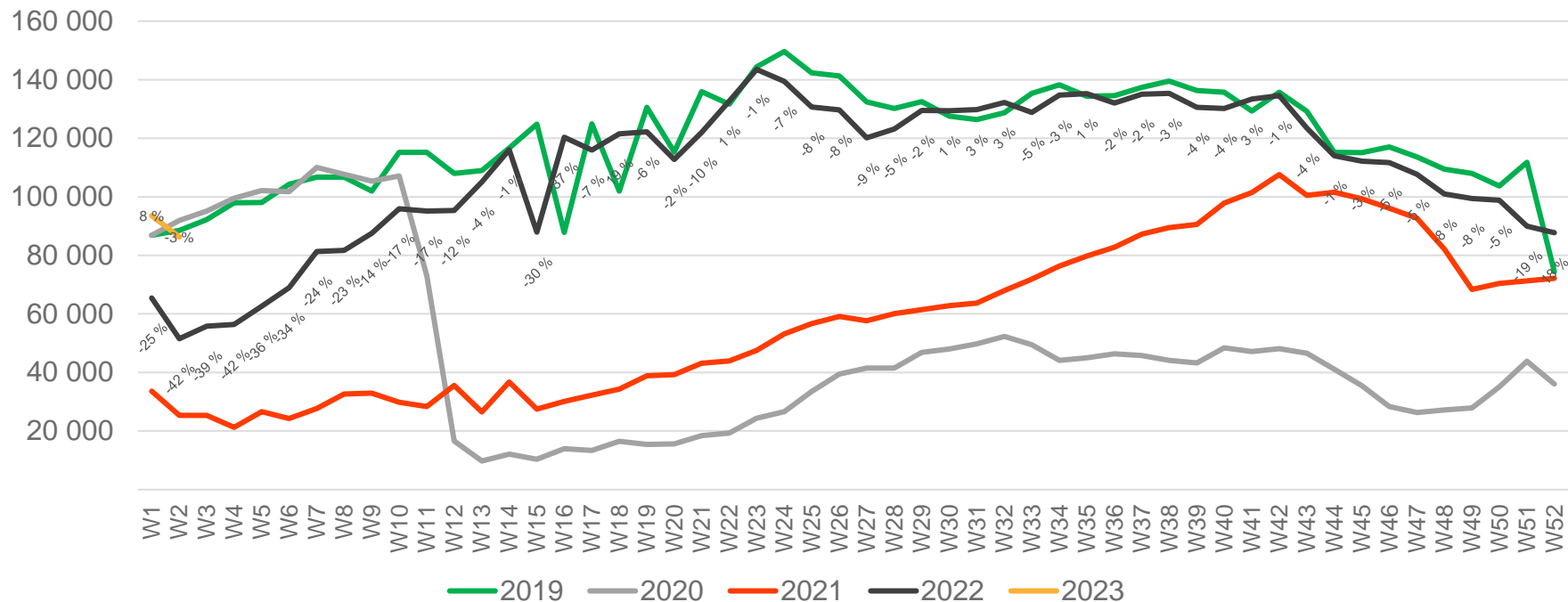
• Week 1 2019 is 31/12-18 – 6/1-19. Week 1 2020 is 30/12-19 – 5/1-20. Week 52 2021 is 27/12-21 – 2/1-22. Week 52 2022 is 26/12-22 – 1/1-23.

# Passengers BGO total per day, week 2



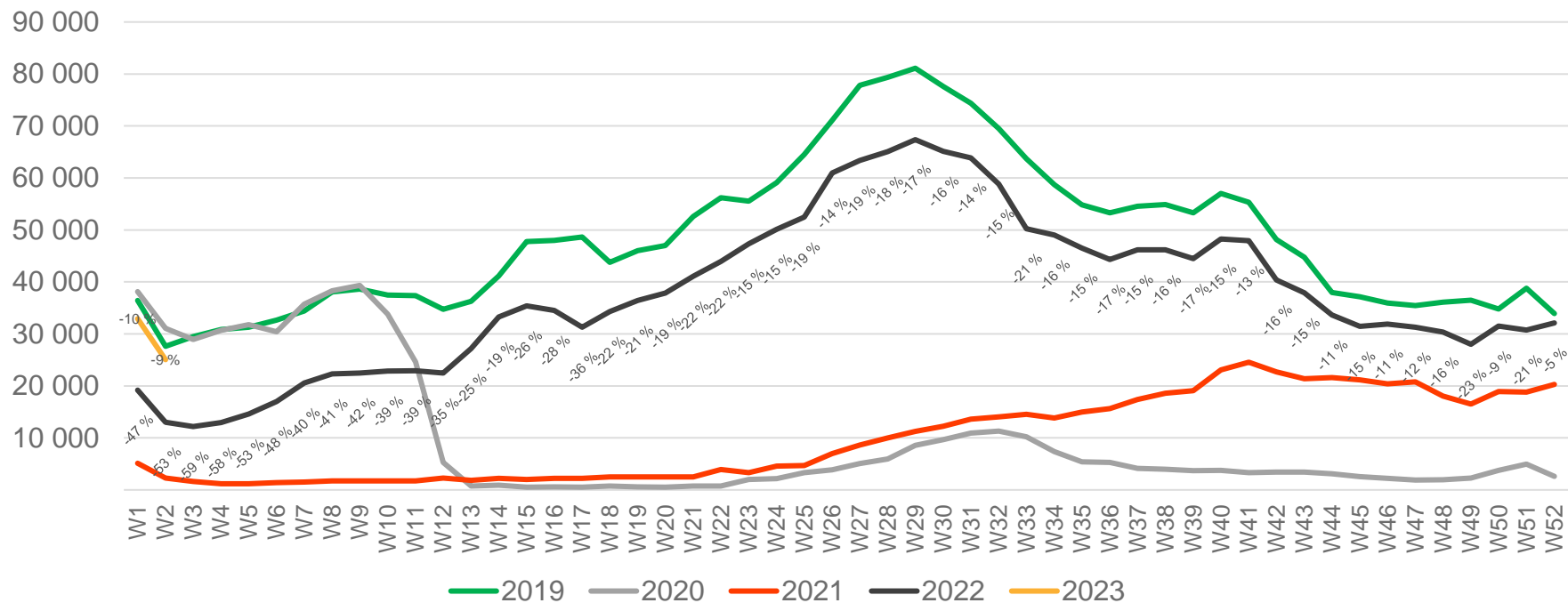
The change is measured from 2019.

# Passengers BGO total per week



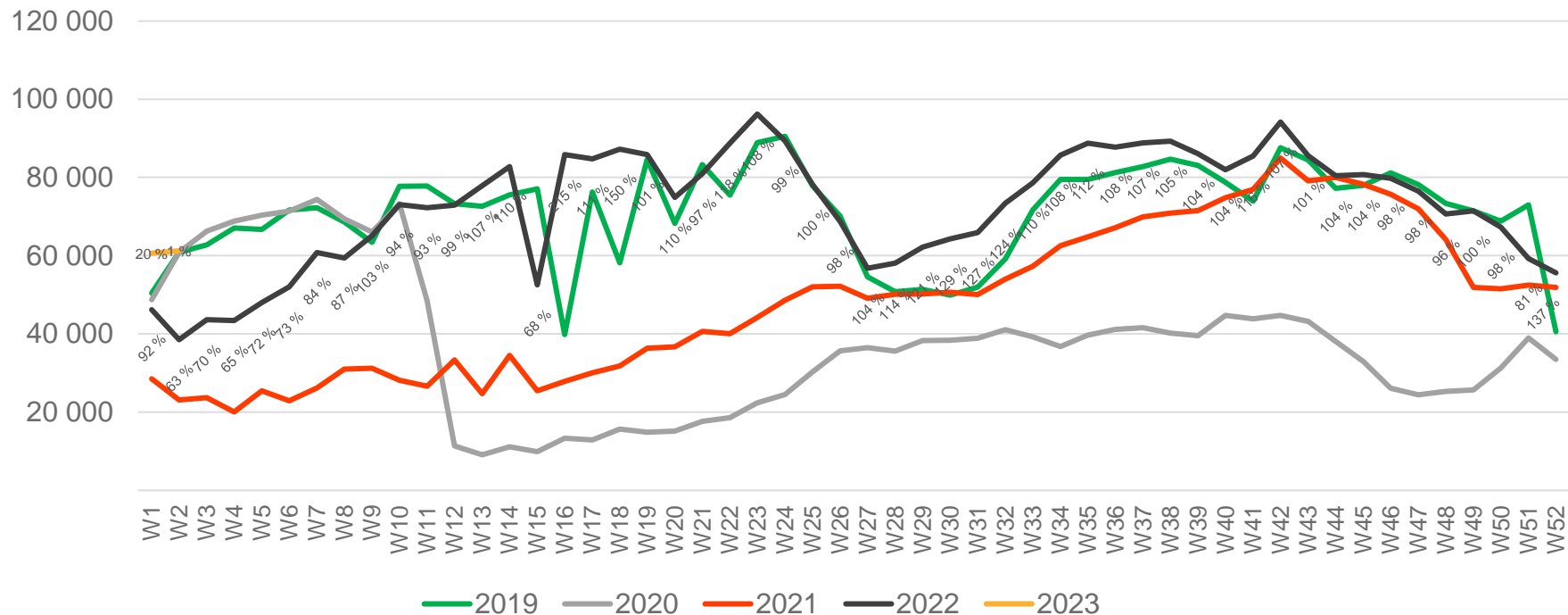
• Week 1 2019 is 31/12-18 – 6/1-19. Week 1 2020 is 30/12-19 – 5/1-20. Week 52 2021 is 27/12-21 – 2/1-22. Week 52 2022 is 26/12-22 – 1/1-23.

# Passengers BGO international per week



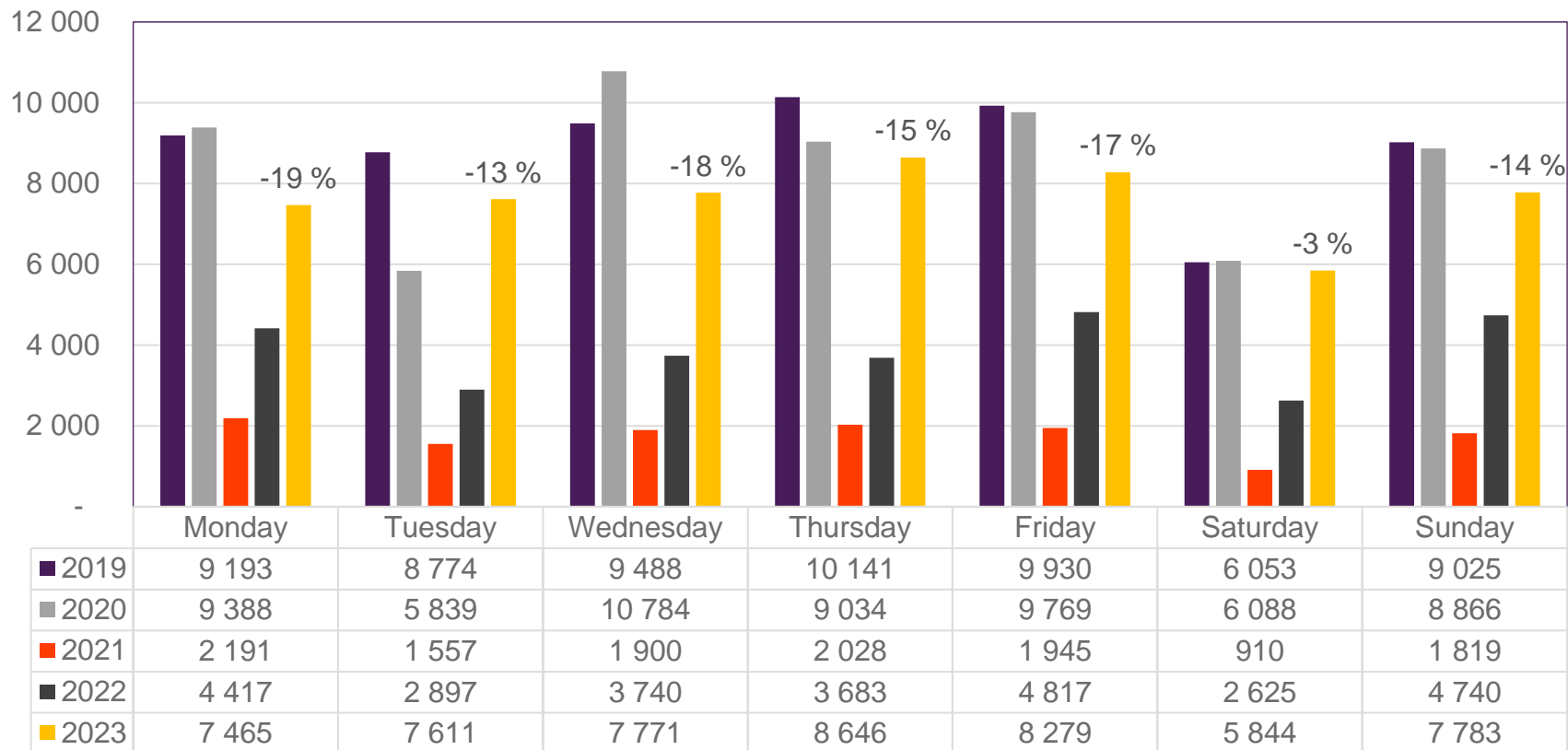
• Week 1 2019 is 31/12-18 – 6/1-19. Week 1 2020 is 30/12-19 – 5/1-20. Week 52 2021 is 27/12-21 – 2/1-22. Week 52 2022 is 26/12-22 – 1/1-23.

# Passengers BGO domestic per week



• Week 1 2019 is 31/12-18 – 6/1-19. Week 1 2020 is 30/12-19 – 5/1-20. Week 52 2021 is 27/12-21 – 2/1-22. Week 52 2022 is 26/12-22 – 1/1-23.

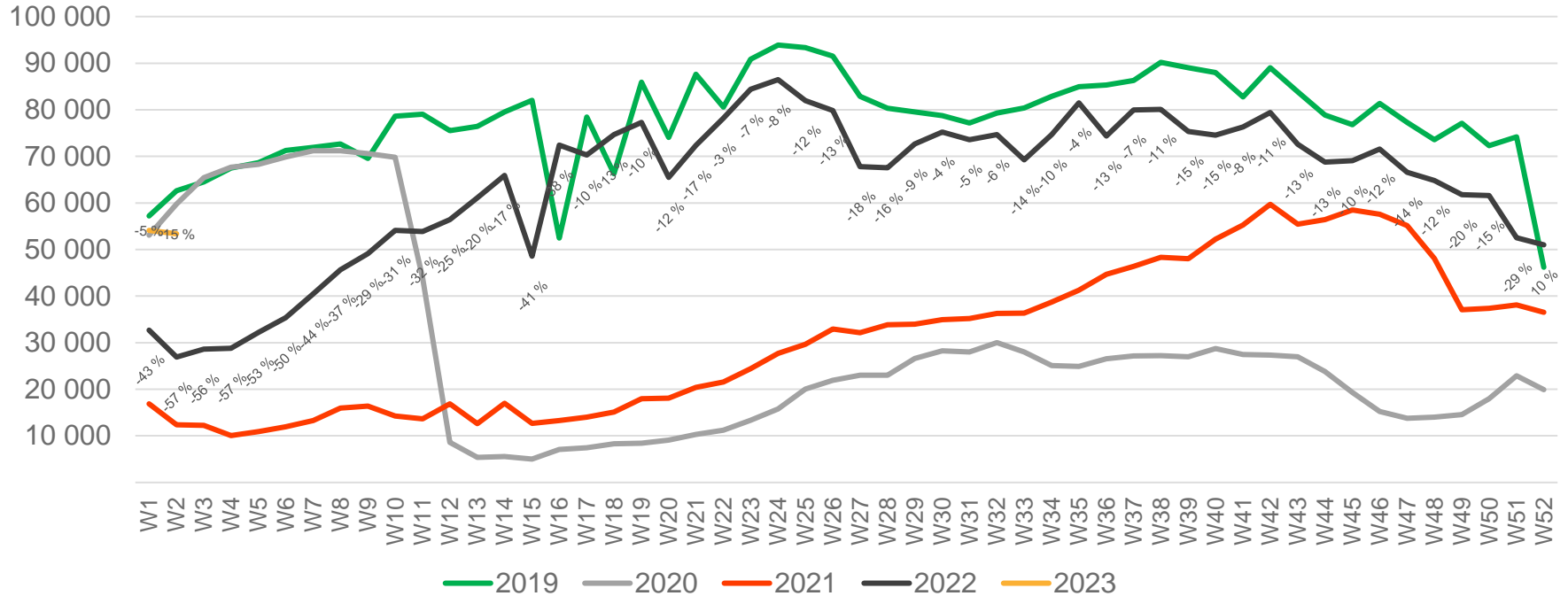
# Passengers SVG total per day, week 2



The change is measured from 2019.

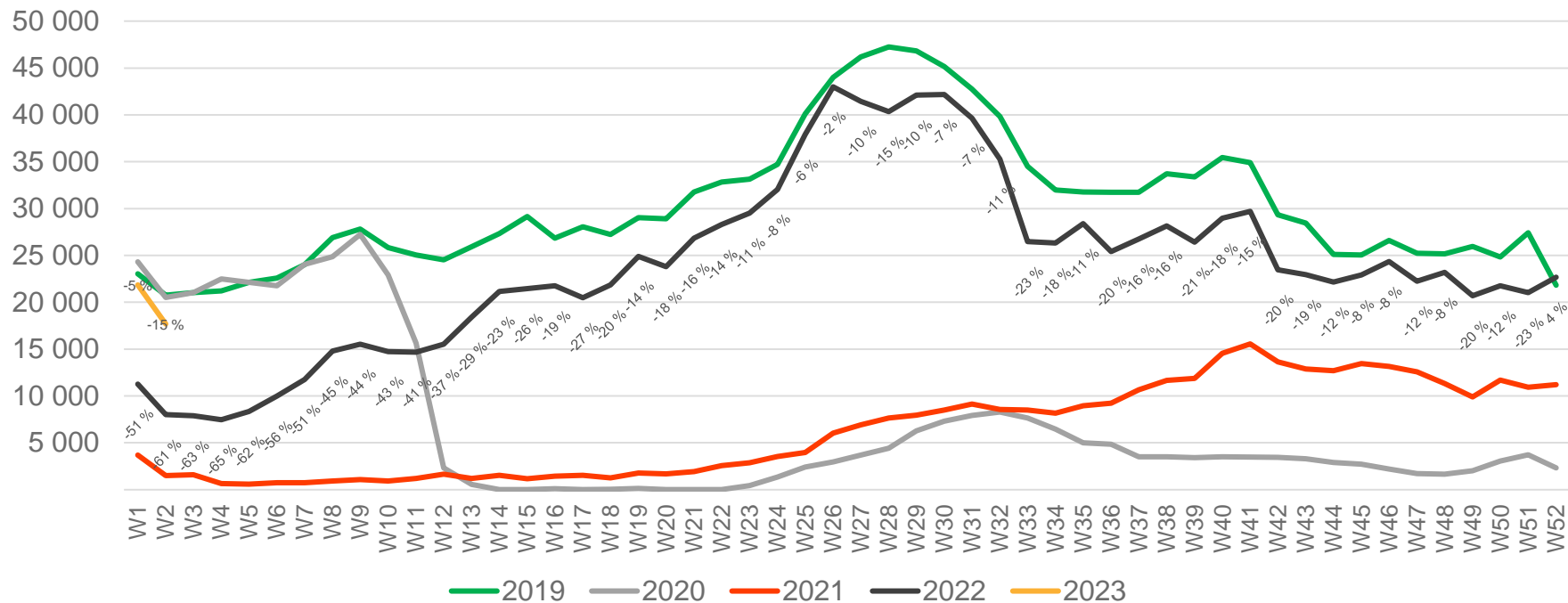


# Passengers SVG total per week



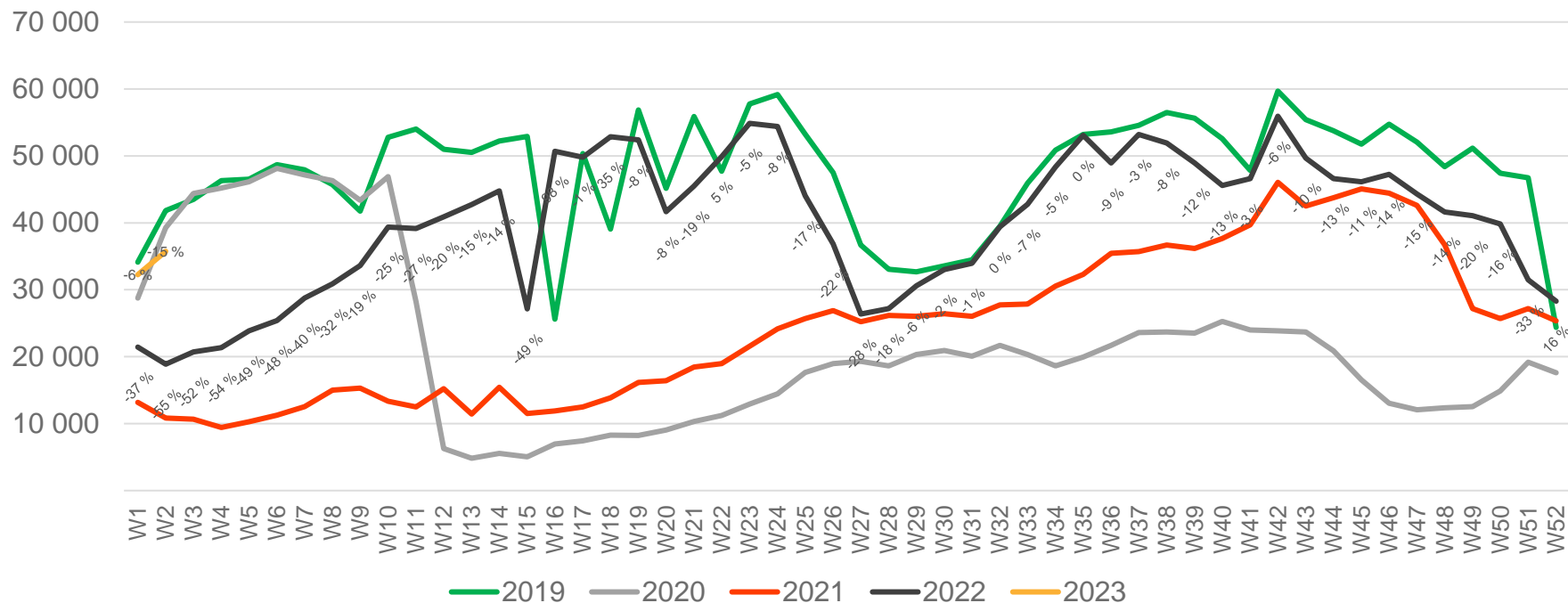
• Week 1 2019 is 31/12-18 – 6/1-19. Week 1 2020 is 30/12-19 – 5/1-20. Week 52 2021 is 27/12-21 – 2/1-22. Week 52 2022 is 26/12-22 – 1/1-23.

# Passengers SVG international per week



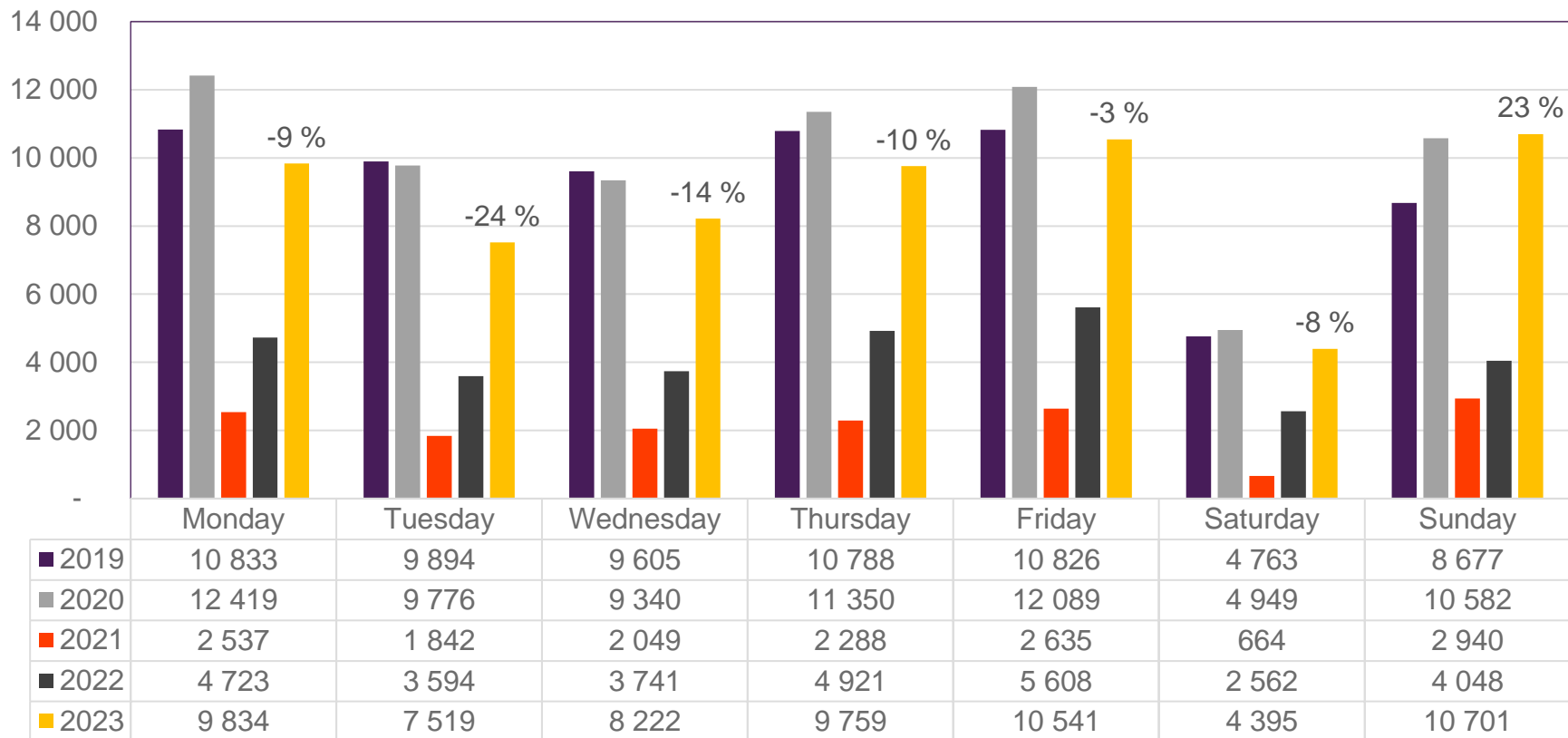
• Week 1 2019 is 31/12-18 – 6/1-19. Week 1 2020 is 30/12-19 – 5/1-20. Week 52 2021 is 27/12-21 – 2/1-22. Week 52 2022 is 26/12-22 – 1/1-23.

# Passengers SVG domestic per week



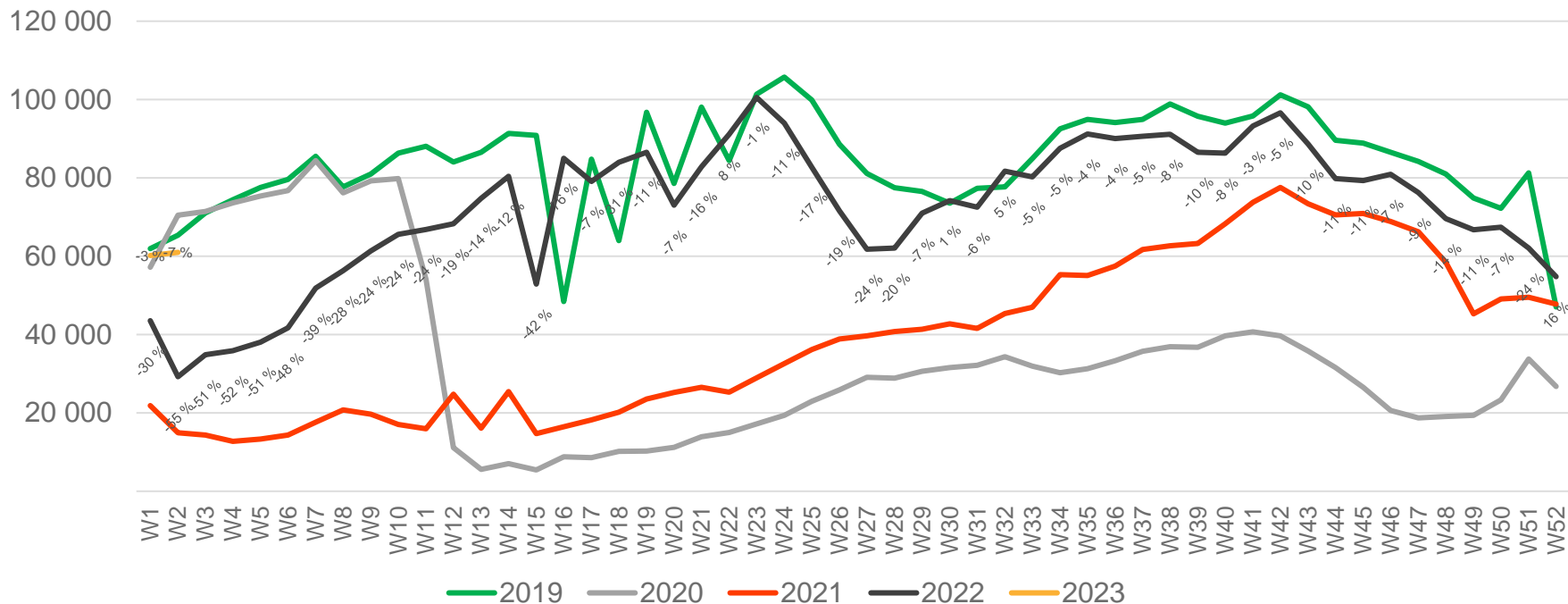
• Week 1 2019 is 31/12-18 – 6/1-19. Week 1 2020 is 30/12-19 – 5/1-20. Week 52 2021 is 27/12-21 – 2/1-22. Week 52 2022 is 26/12-22 – 1/1-23.

# Passengers TRD total per day, week 2



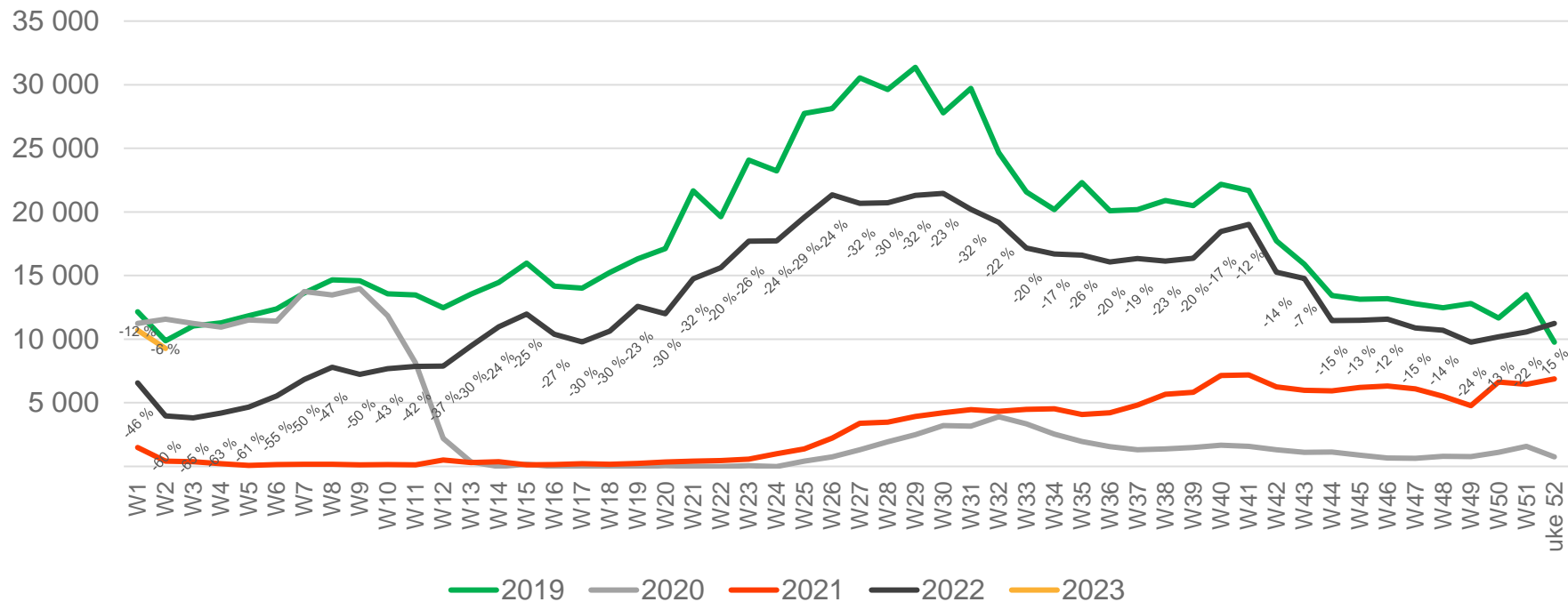
The change is measured from 2019.

# Passengers TRD total per week



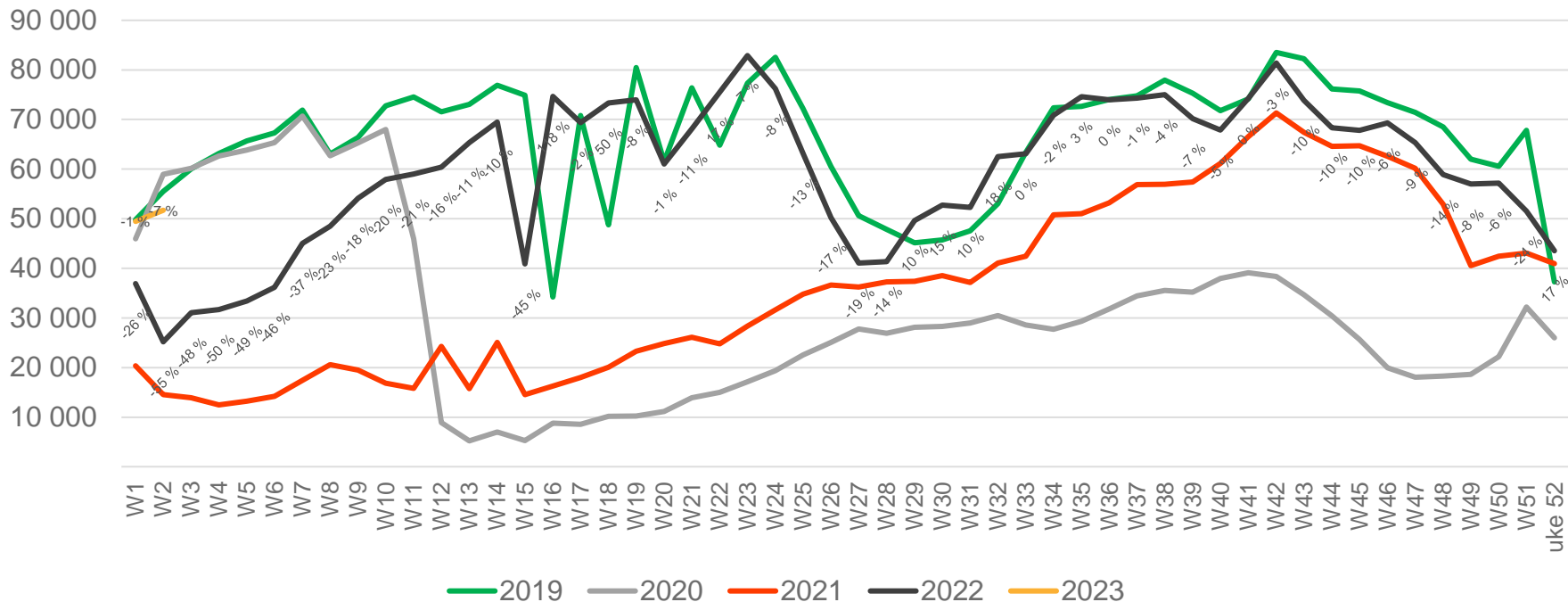
• Week 1 2019 is 31/12-18 – 6/1-19. Week 1 2020 is 30/12-19 – 5/1-20. Week 52 2021 is 27/12-21 – 2/1-22. Week 52 2022 is 26/12-22 – 1/1-23.

# Passengers TRD international per week



• Week 1 2019 is 31/12-18 – 6/1-19. Week 1 2020 is 30/12-19 – 5/1-20. Week 52 2021 is 27/12-21 – 2/1-22. Week 52 2022 is 26/12-22 – 1/1-23.

# Passengers TRD domestic per week



• Week 1 2019 is 31/12-18 – 6/1-19. Week 1 2020 is 30/12-19 – 5/1-20. Week 52 2021 is 27/12-21 – 2/1-22. Week 52 2022 is 26/12-22 – 1/1-23.