



Passenger numbers per week

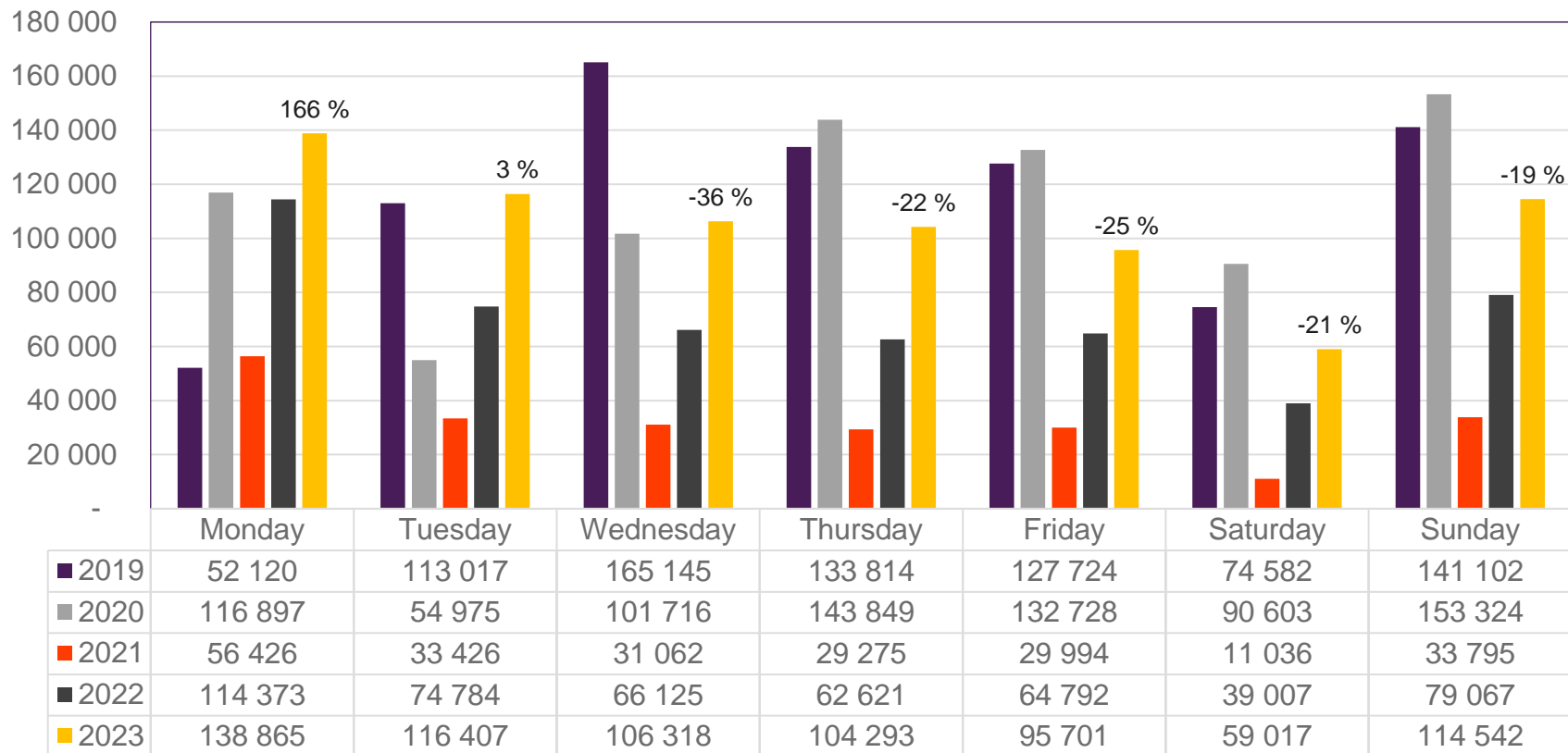
Preliminary figures

- The figures for the previous week are preliminary. It takes some time for all passenger numbers to be reported, so the figures for the previous week may be 1-2% lower than the final figures.
- The figures are taken from Avinor's traffic database.
- Week 1 2019 include numbers from 2018 (31/12 2018)
Week 1 2020 include numbers from 2019 (30-31/12 2019)
Week 52 2021 include numbers from 2022 (1-2/1 2022)
Week 52 2022 include numbers from 2023 (1/1 2023)

Top 10 airports, total week 1

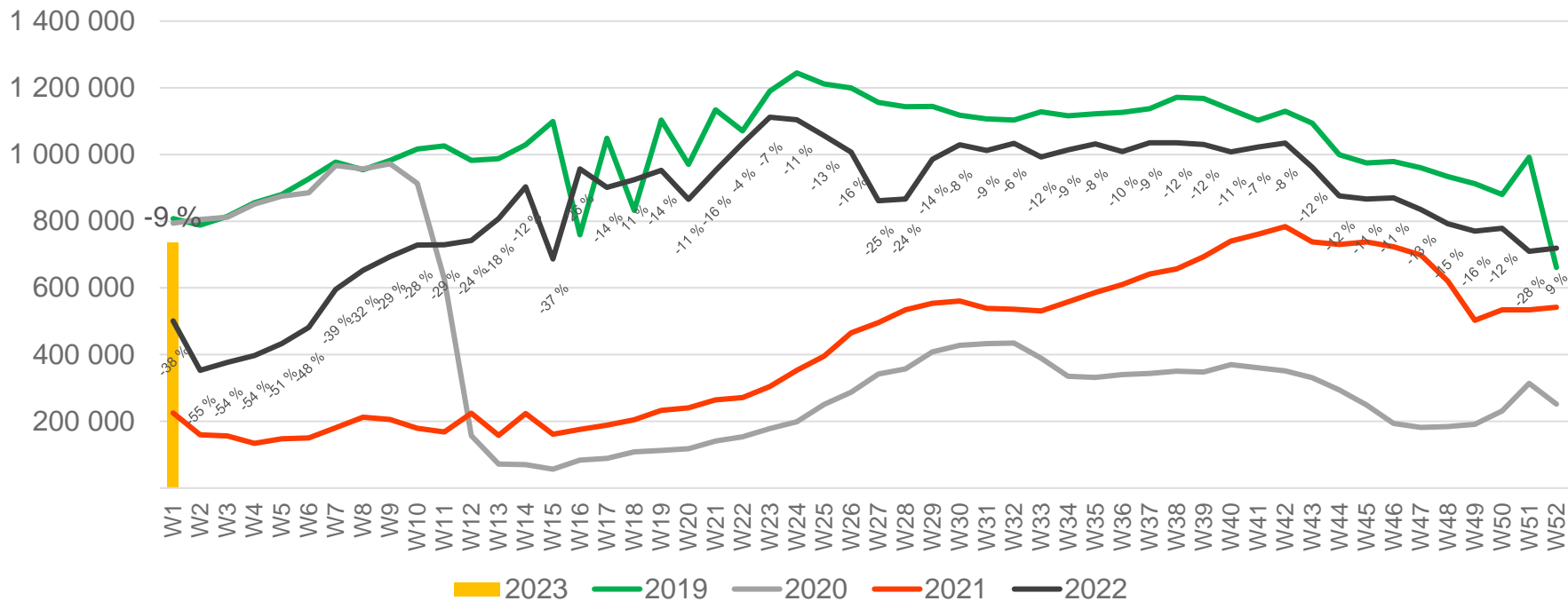
Airport	2019	2020	2021	2022	2023	2022 vs. 2019		2022 vs. 2021	
						Change	Change %	Change	Change %
Oslo/Gardermoen	437 317	437 430	82 851	237 024	373 737	-63 580	-15 %	136 713	58 %
Bergen/Flesland	86 851	86 906	33 585	65 415	91 596	4 745	5 %	26 181	40 %
Trondheim/Værnes	61 963	57 223	21 841	43 512	59 198	-2 765	-4 %	15 686	36 %
Stavanger/Sola	57 184	53 090	16 865	32 707	53 897	-3 287	-6 %	21 190	65 %
Tromsø/Langnes	46 452	46 100	16 854	33 313	44 607	-1 845	-4 %	11 294	34 %
Bodø	23 980	23 777	10 966	19 588	24 478	498	2 %	4 890	25 %
Ålesund/Vigra	17 802	15 758	6 204	10 962	15 564	-2 238	-13 %	4 602	42 %
Kristiansand/Kjevik	14 898	13 676	4 477	8 379	12 712	-2 186	-15 %	4 333	52 %
Harstad/Narvik/Evenes	12 355	11 884	4 421	9 804	11 894	-461	-4 %	2 090	21 %
Bardufoss	5 143	4 654	2 435	2 255	2 406	-2 737	-53 %	151	7 %

Passengers Avinor total per day, week 1



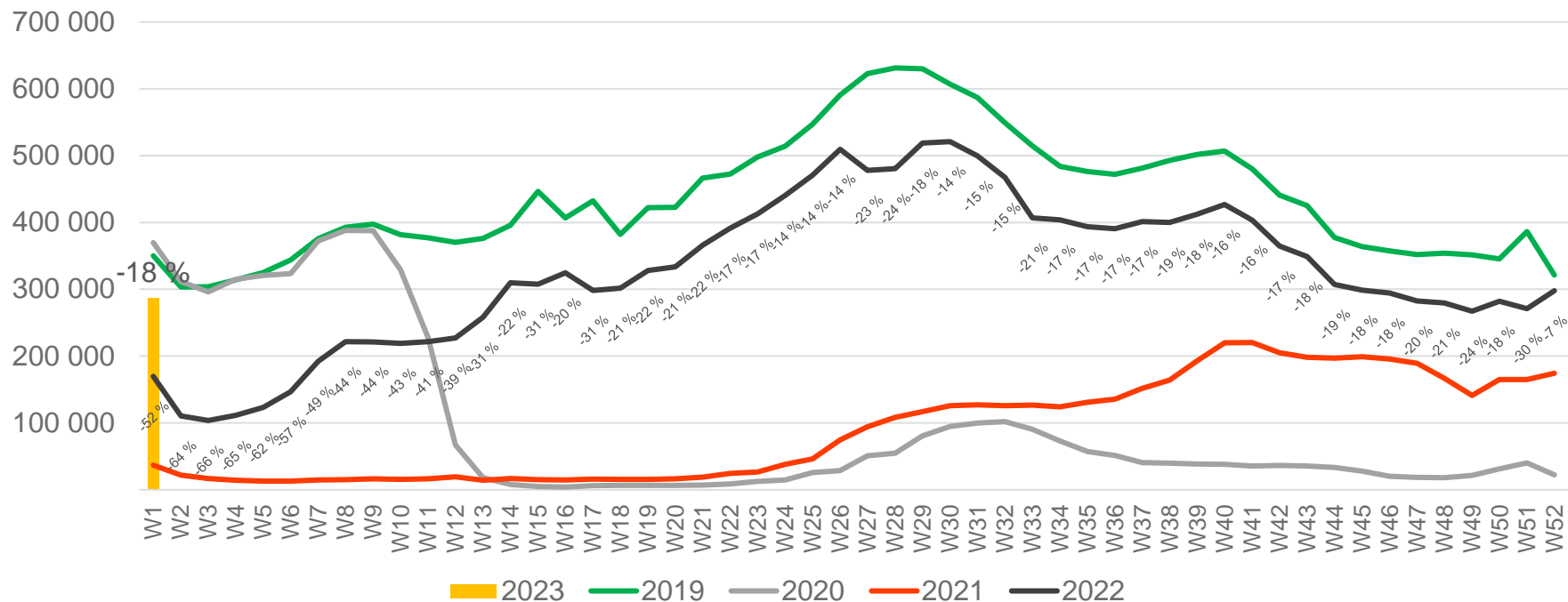
The deviation is measured towards 2019.

Passengers Avinor total per week



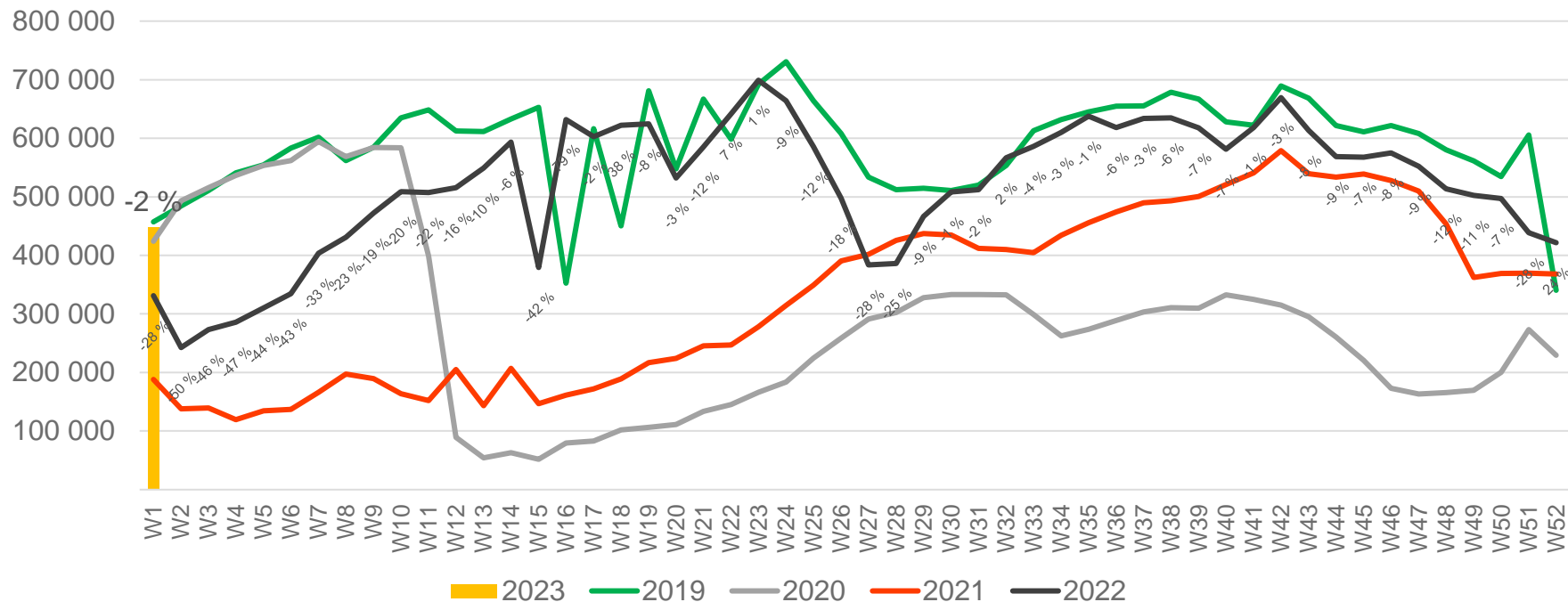
• Week 1 2019 is 31/12-18 – 6/1-19. Week 1 2020 is 30/12-19 – 5/1-20. Week 52 2021 is 27/12-21 – 2/1-22. Week 52 2022 is 26/12-22 – 1/1-23.

Passengers Avinor international per week



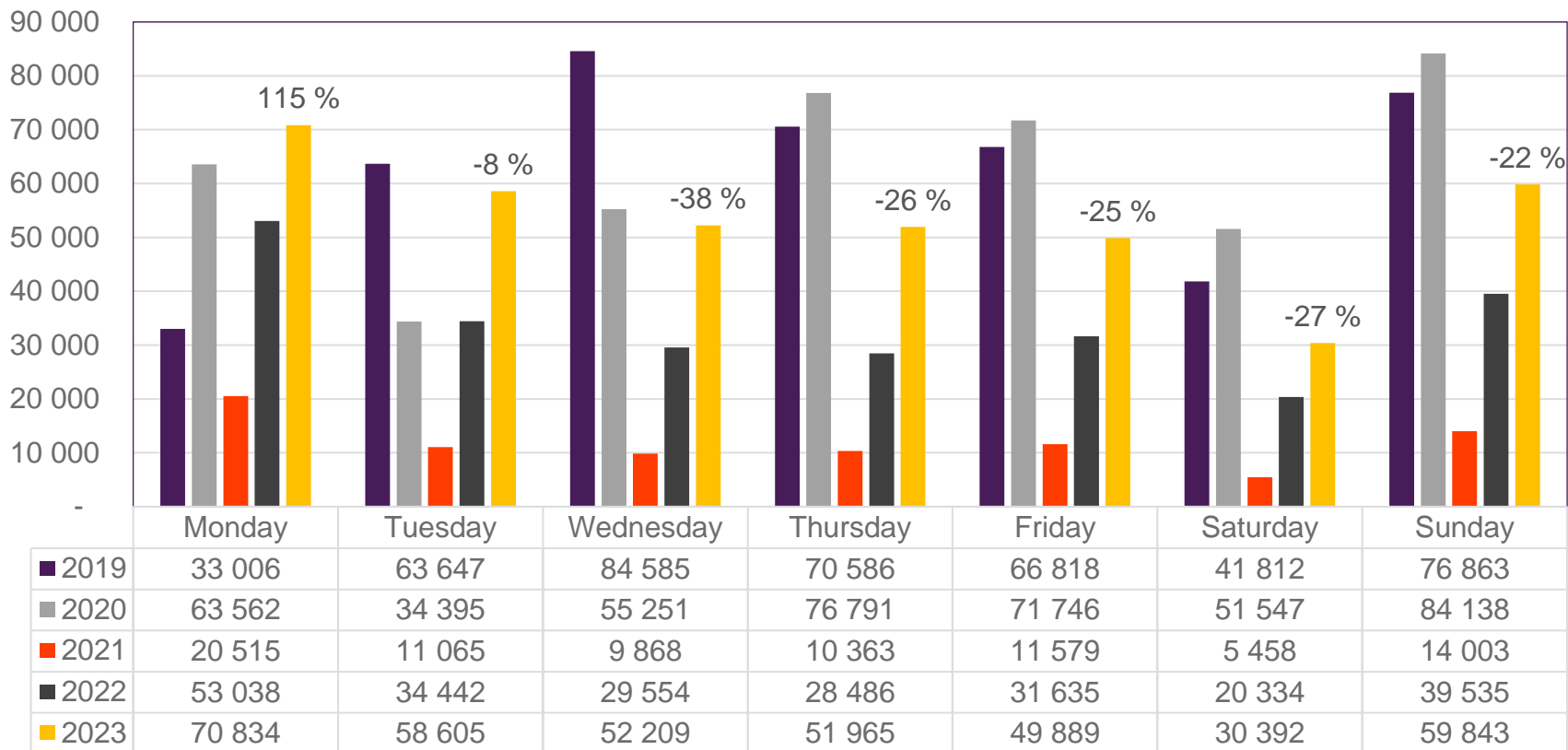
• Week 1 2019 is 31/12-18 – 6/1-19. Week 1 2020 is 30/12-19 – 5/1-20. Week 52 2021 is 27/12-21 – 2/1-22. Week 52 2022 is 26/12-22 – 1/1-23.

Passengers Avinor domestic per week



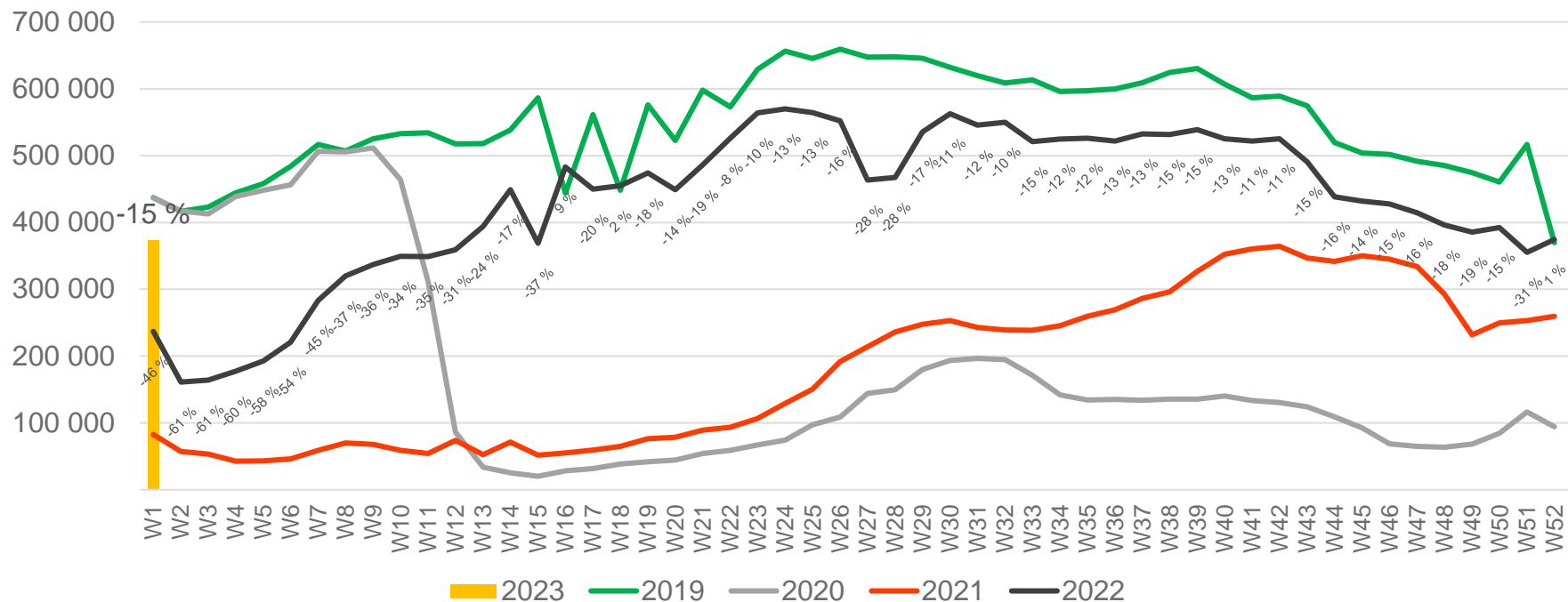
• Week 1 2019 is 31/12-18 – 6/1-19. Week 1 2020 is 30/12-19 – 5/1-20. Week 52 2021 is 27/12-21 – 2/1-22. Week 52 2022 is 26/12-22 – 1/1-23.

Passengers OSL total per day, week 1



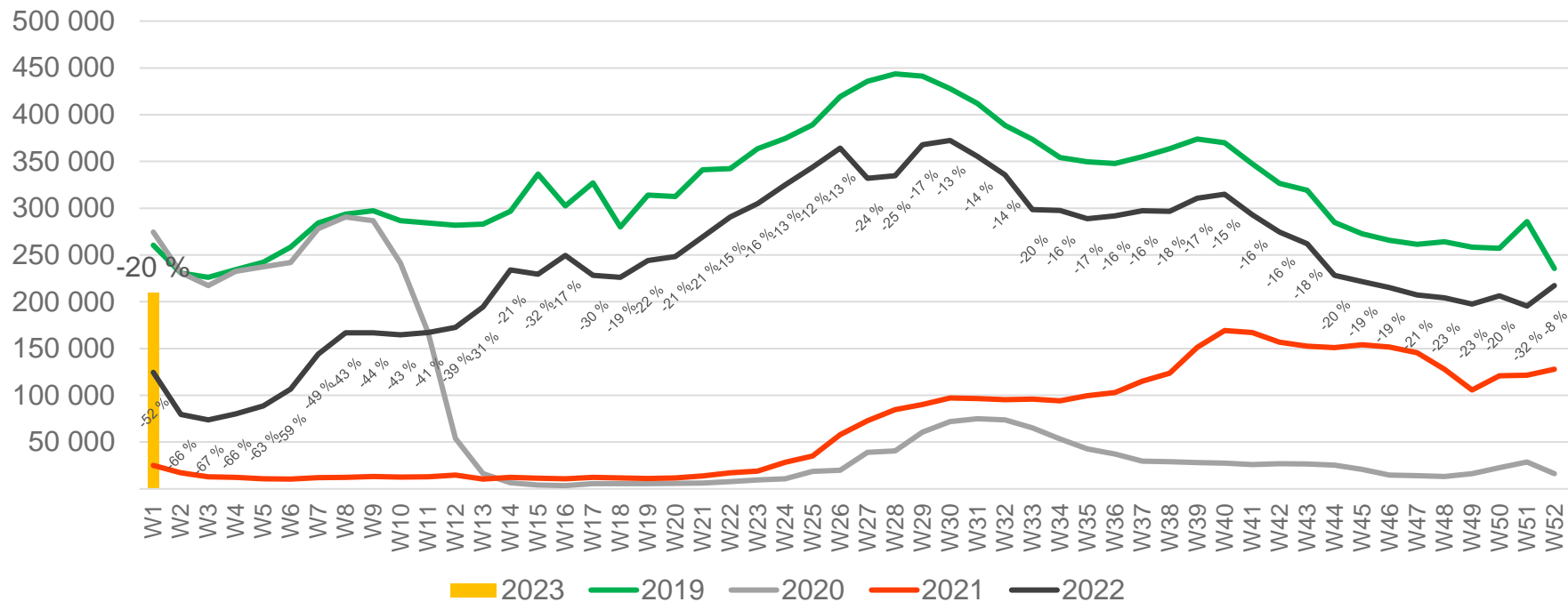
The deviation is measured towards 2019.

Passengers OSL total per week



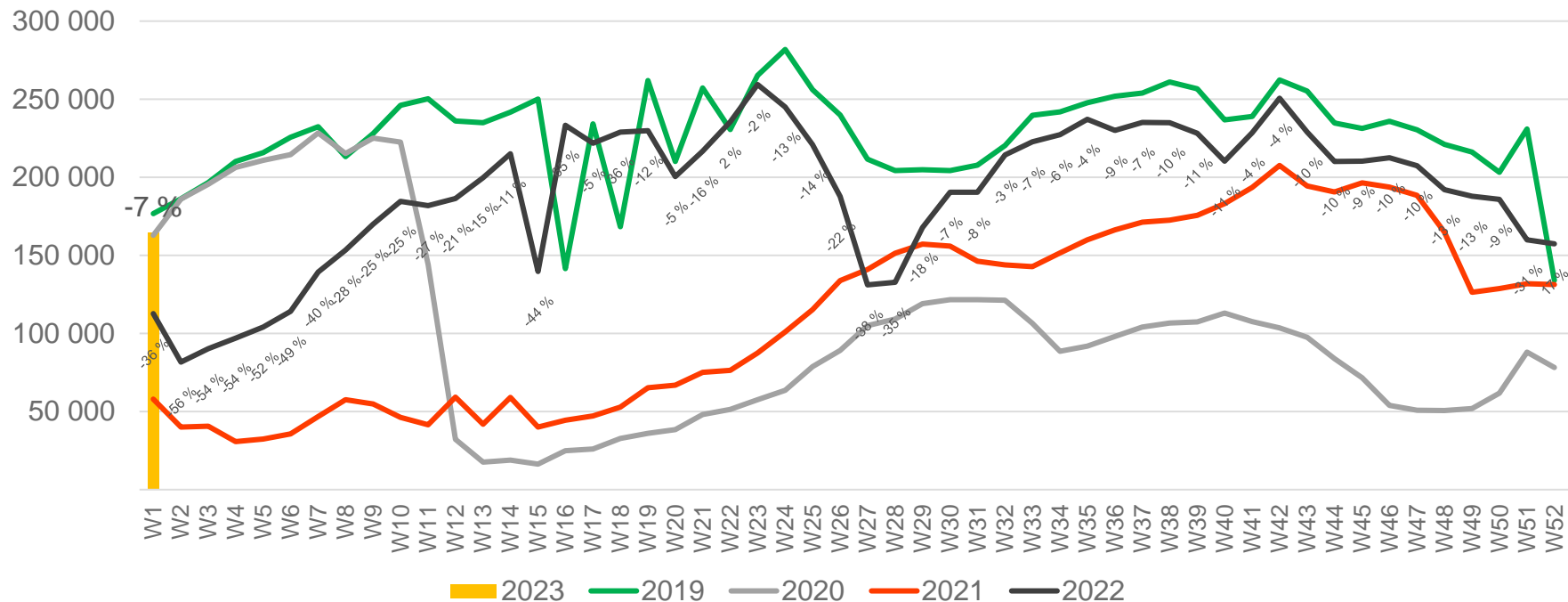
• Week 1 2019 is 31/12-18 – 6/1-19. Week 1 2020 is 30/12-19 – 5/1-20. Week 52 2021 is 27/12-21 – 2/1-22. Week 52 2022 is 26/12-22 – 1/1-23.

Passengers OSL international per week



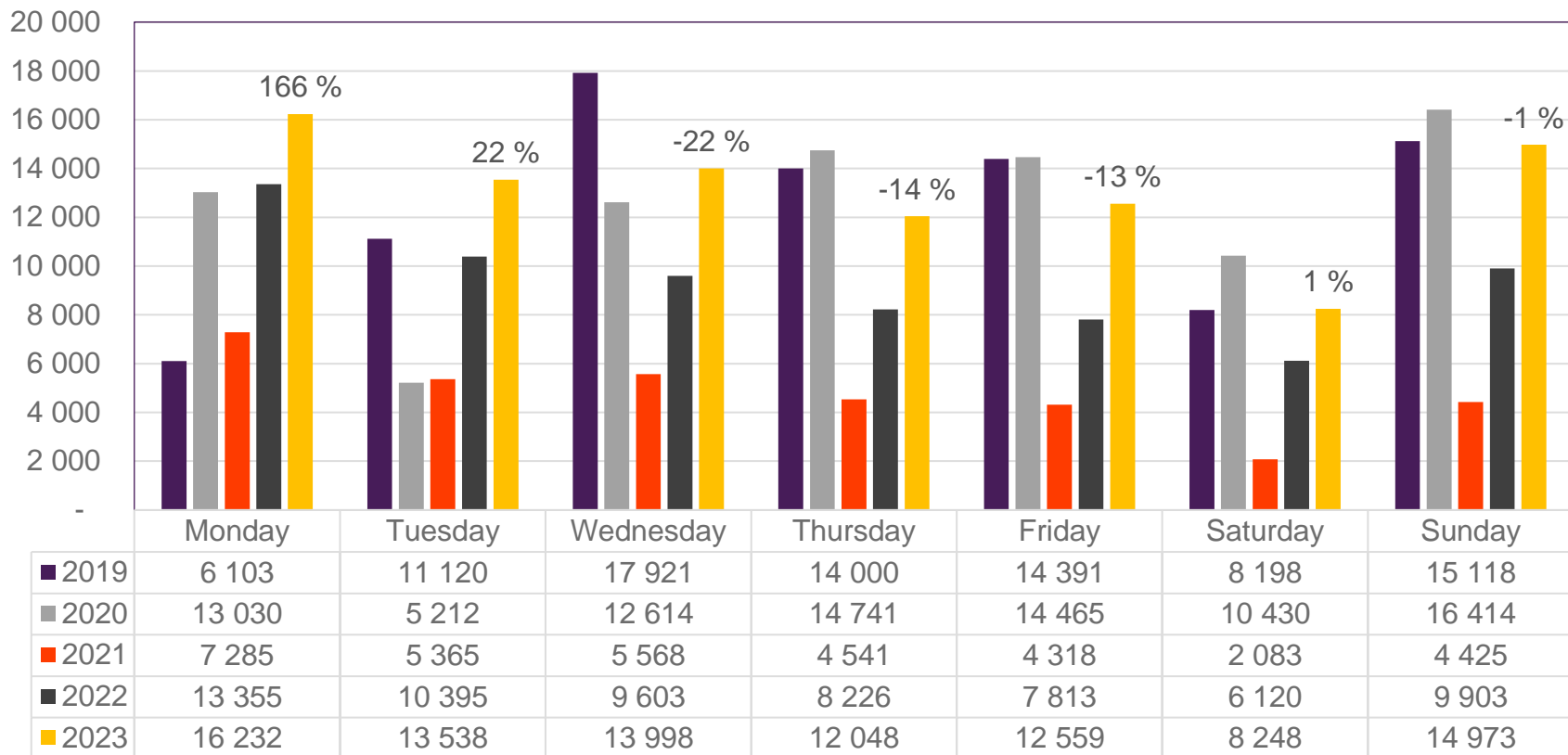
• Week 1 2019 is 31/12-18 – 6/1-19. Week 1 2020 is 30/12-19 – 5/1-20. Week 52 2021 is 27/12-21 – 2/1-22. Week 52 2022 is 26/12-22 – 1/1-23.

Passengers OSL domestic per week



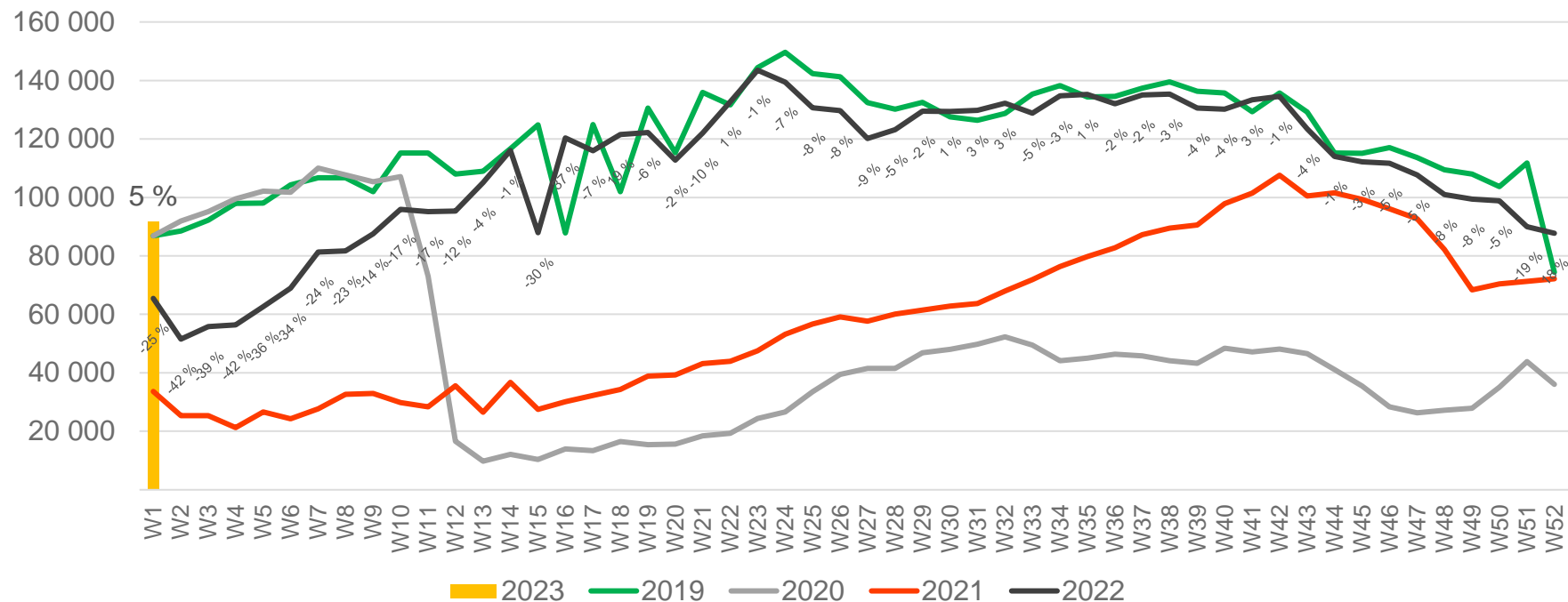
• Week 1 2019 is 31/12-18 – 6/1-19. Week 1 2020 is 30/12-19 – 5/1-20. Week 52 2021 is 27/12-21 – 2/1-22. Week 52 2022 is 26/12-22 – 1/1-23.

Passengers BGO total per day, week 1



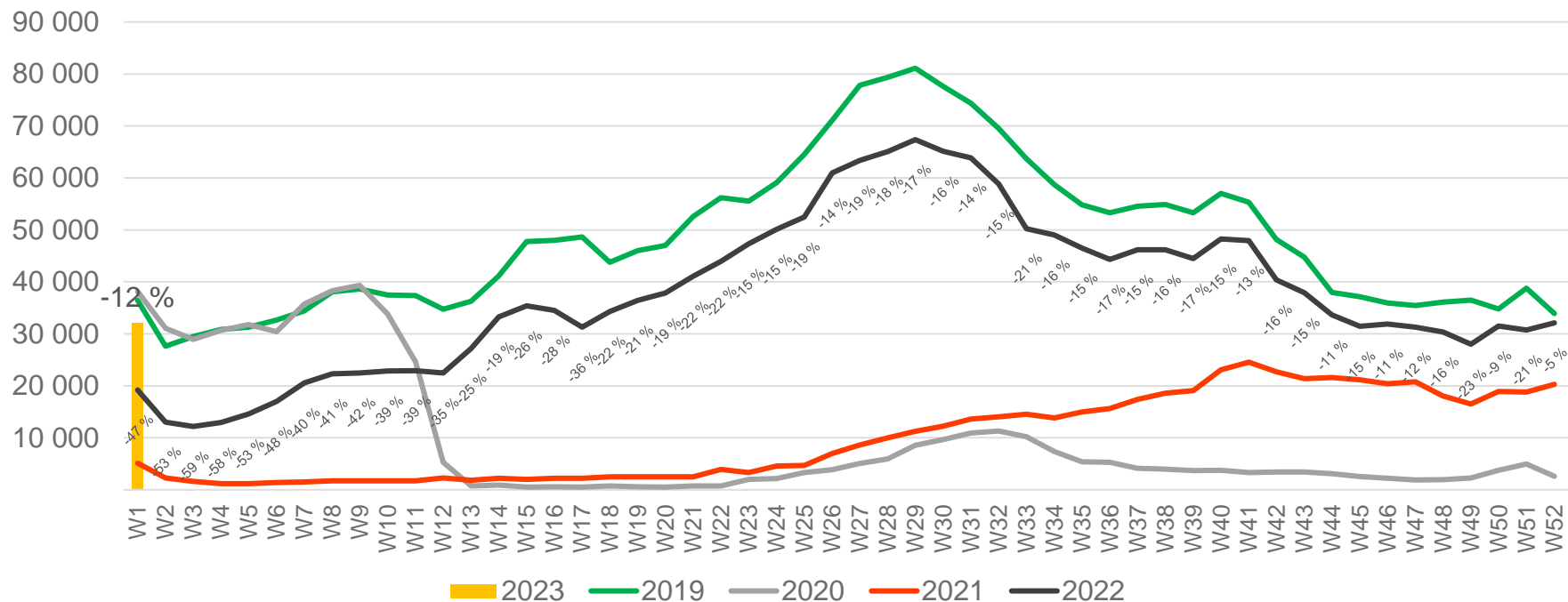
The deviation is measured towards 2019.

Passengers BGO total per week



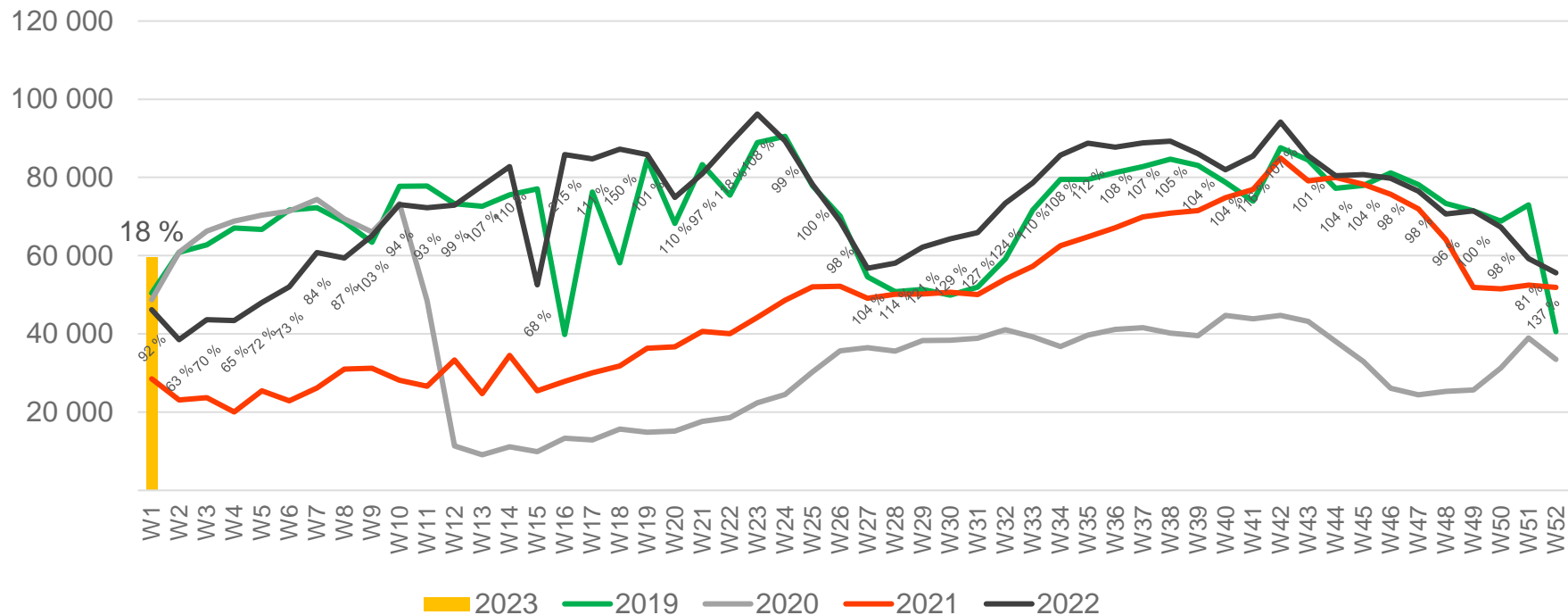
• Week 1 2019 is 31/12-18 – 6/1-19. Week 1 2020 is 30/12-19 – 5/1-20. Week 52 2021 is 27/12-21 – 2/1-22. Week 52 2022 is 26/12-22 – 1/1-23.

Passengers BGO international per week



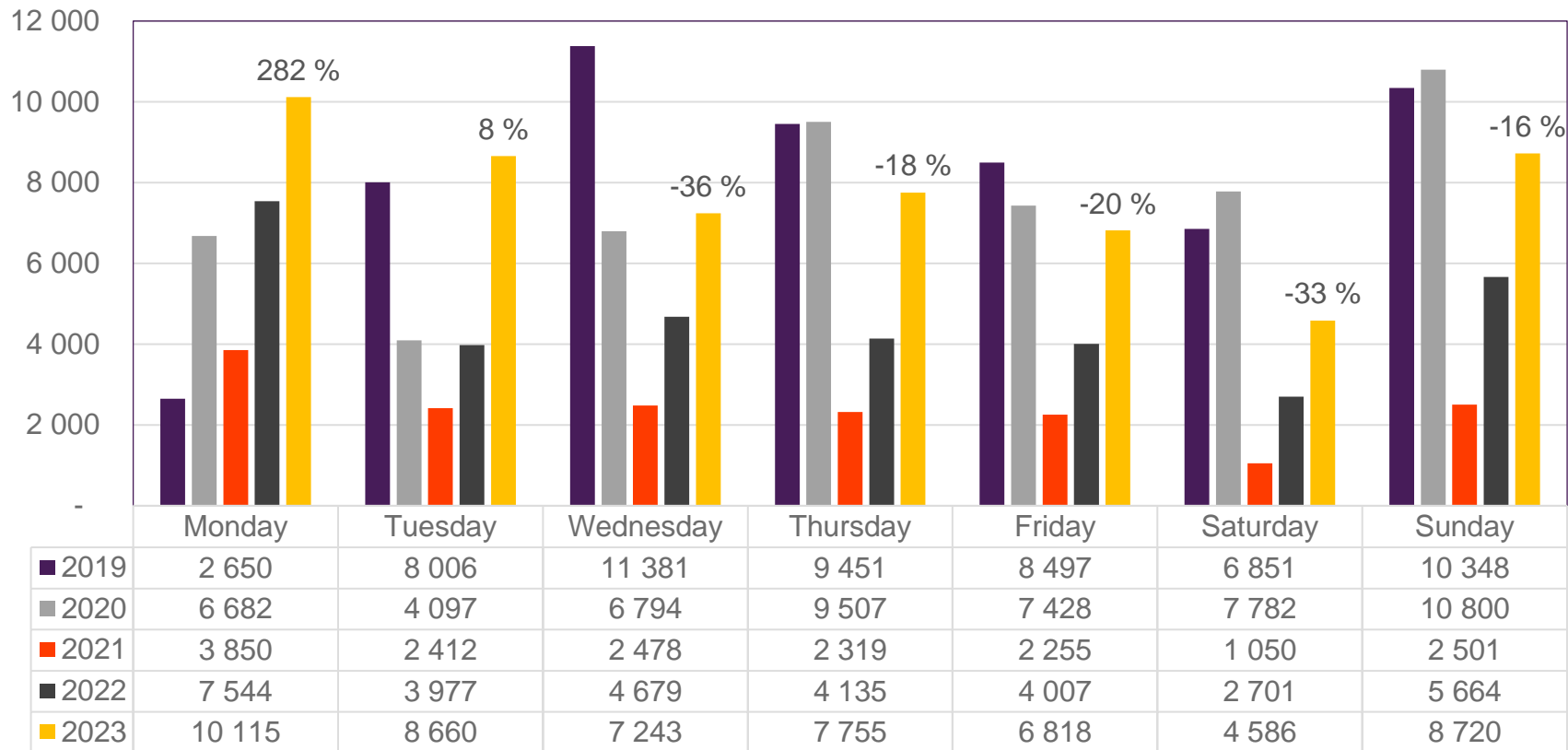
• Week 1 2019 is 31/12-18 – 6/1-19. Week 1 2020 is 30/12-19 – 5/1-20. Week 52 2021 is 27/12-21 – 2/1-22. Week 52 2022 is 26/12-22 – 1/1-23.

Passengers BGO domestic per week



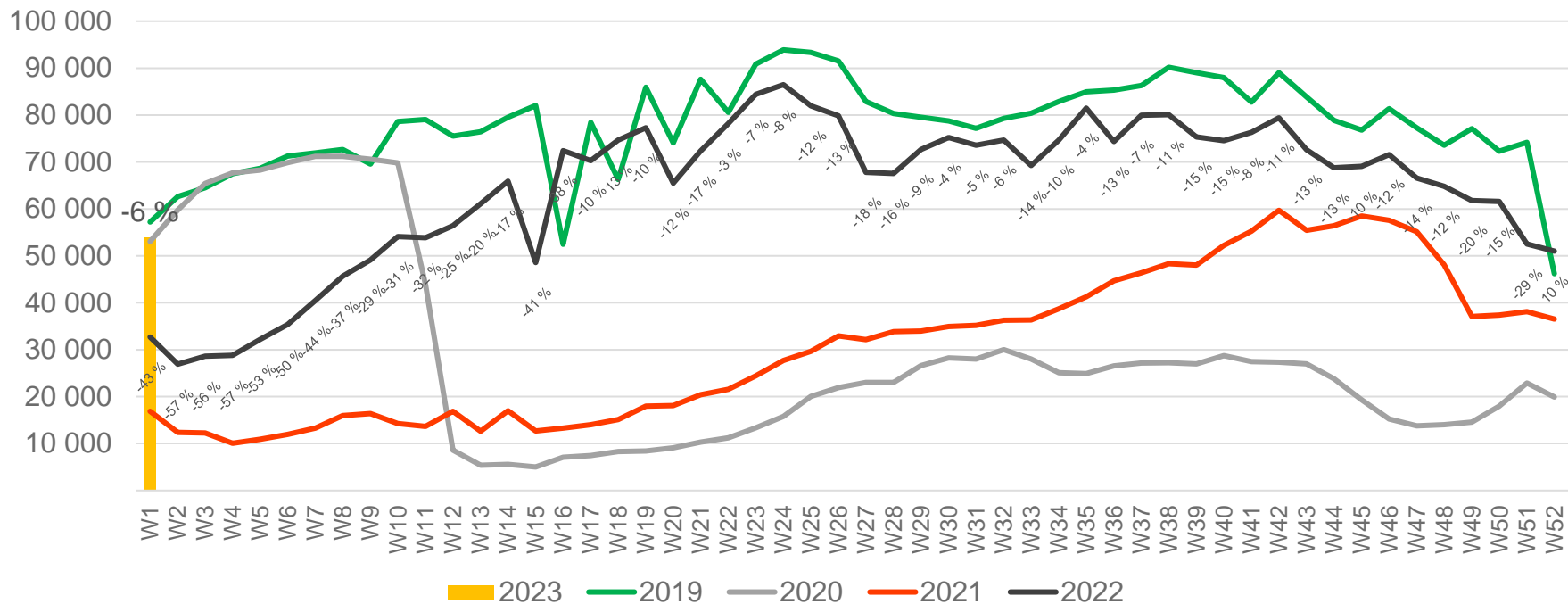
• Week 1 2019 is 31/12-18 – 6/1-19. Week 1 2020 is 30/12-19 – 5/1-20. Week 52 2021 is 27/12-21 – 2/1-22. Week 52 2022 is 26/12-22 – 1/1-23.

Passengers SVG total per day, week 1



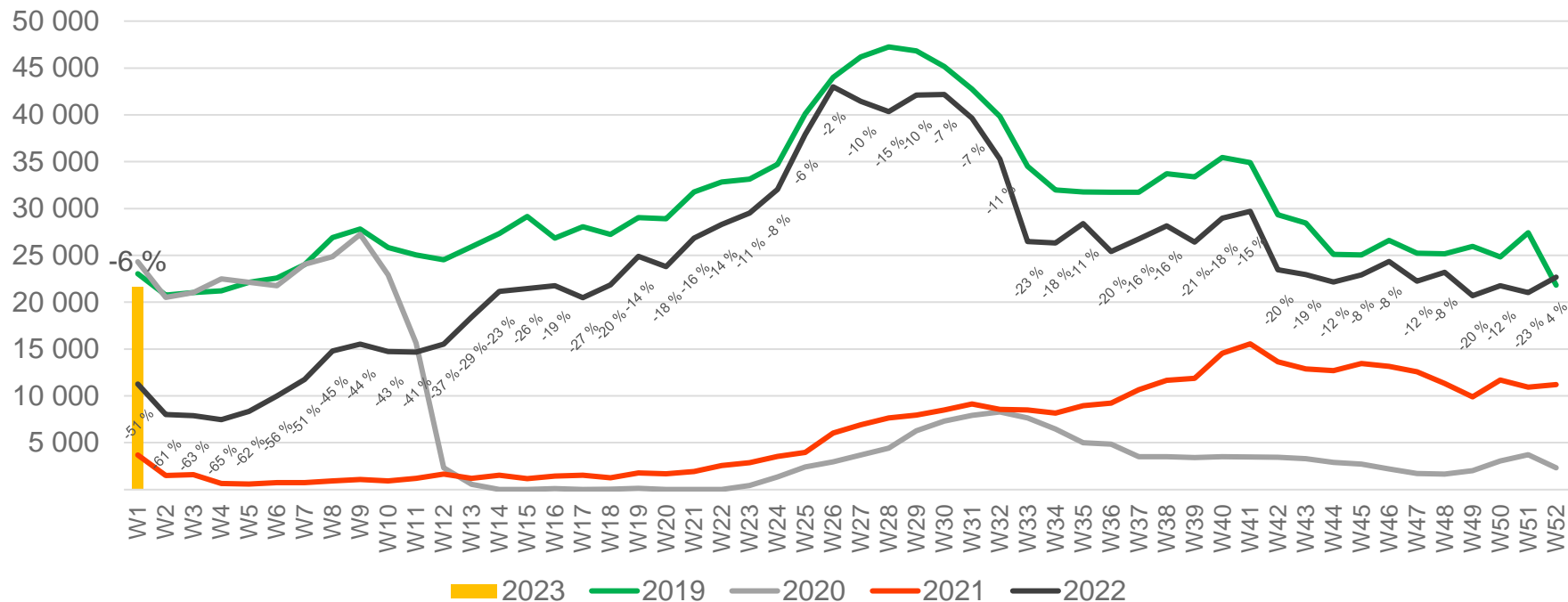
The deviation is measured towards 2019.

Passengers SVG total per week



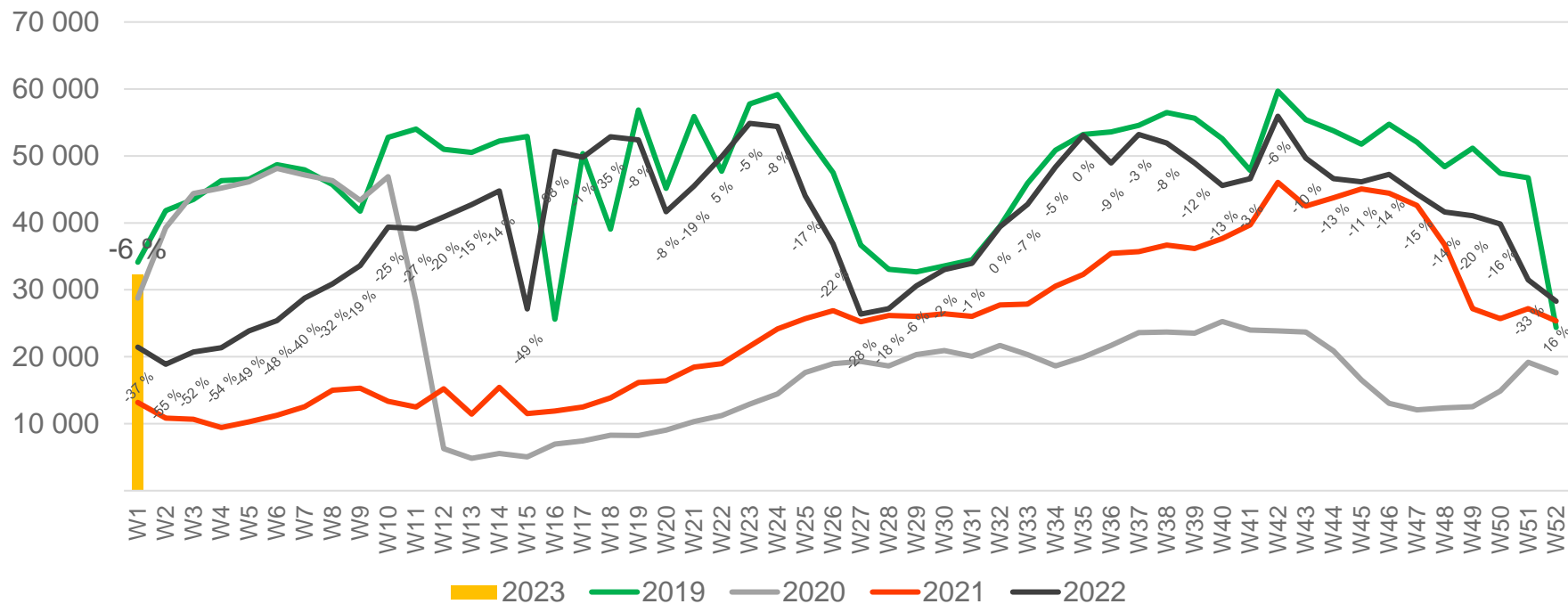
• Week 1 2019 is 31/12-18 – 6/1-19. Week 1 2020 is 30/12-19 – 5/1-20. Week 52 2021 is 27/12-21 – 2/1-22. Week 52 2022 is 26/12-22 – 1/1-23.

Passengers SVG international per week



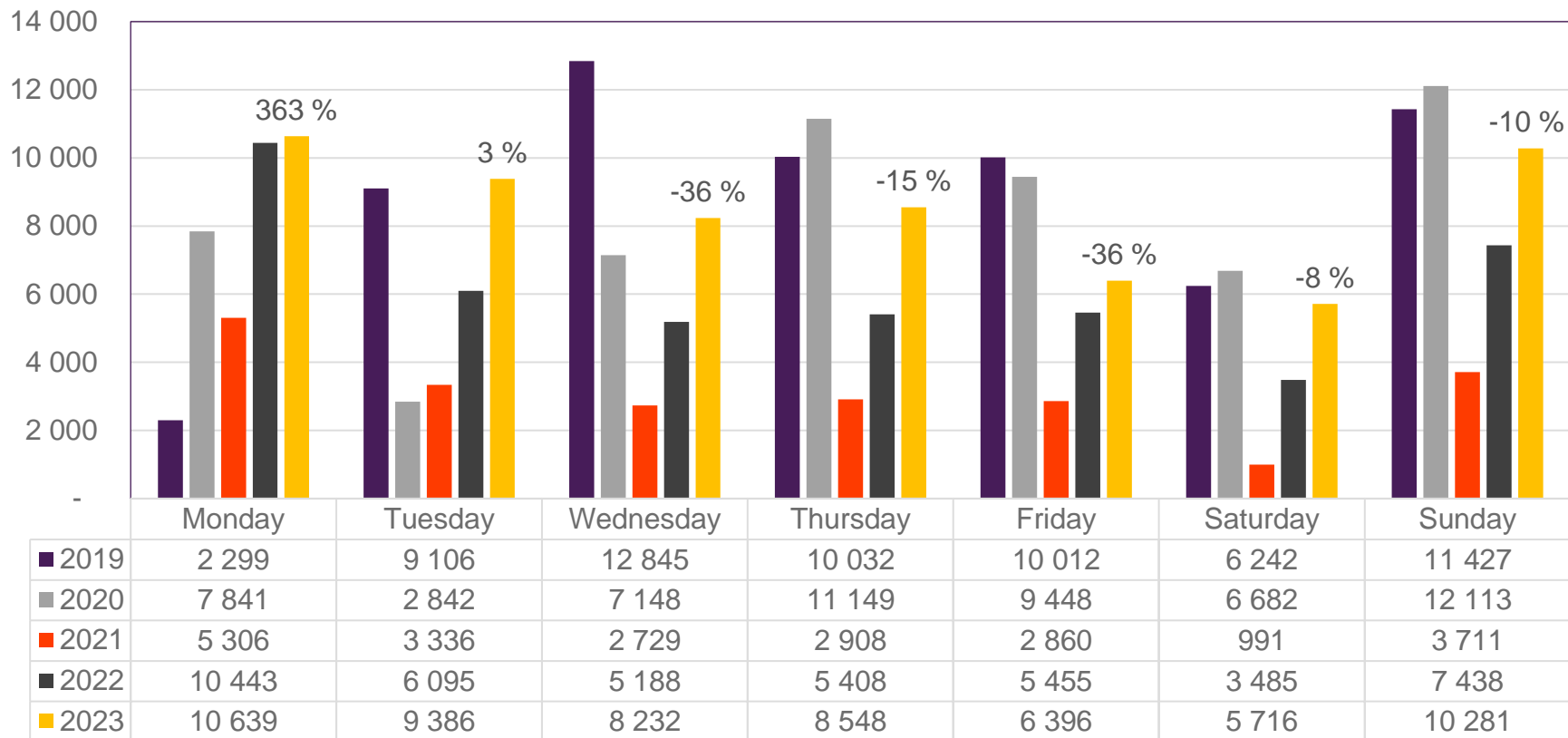
• Week 1 2019 is 31/12-18 – 6/1-19. Week 1 2020 is 30/12-19 – 5/1-20. Week 52 2021 is 27/12-21 – 2/1-22. Week 52 2022 is 26/12-22 – 1/1-23.

Passengers SVG domestic per week



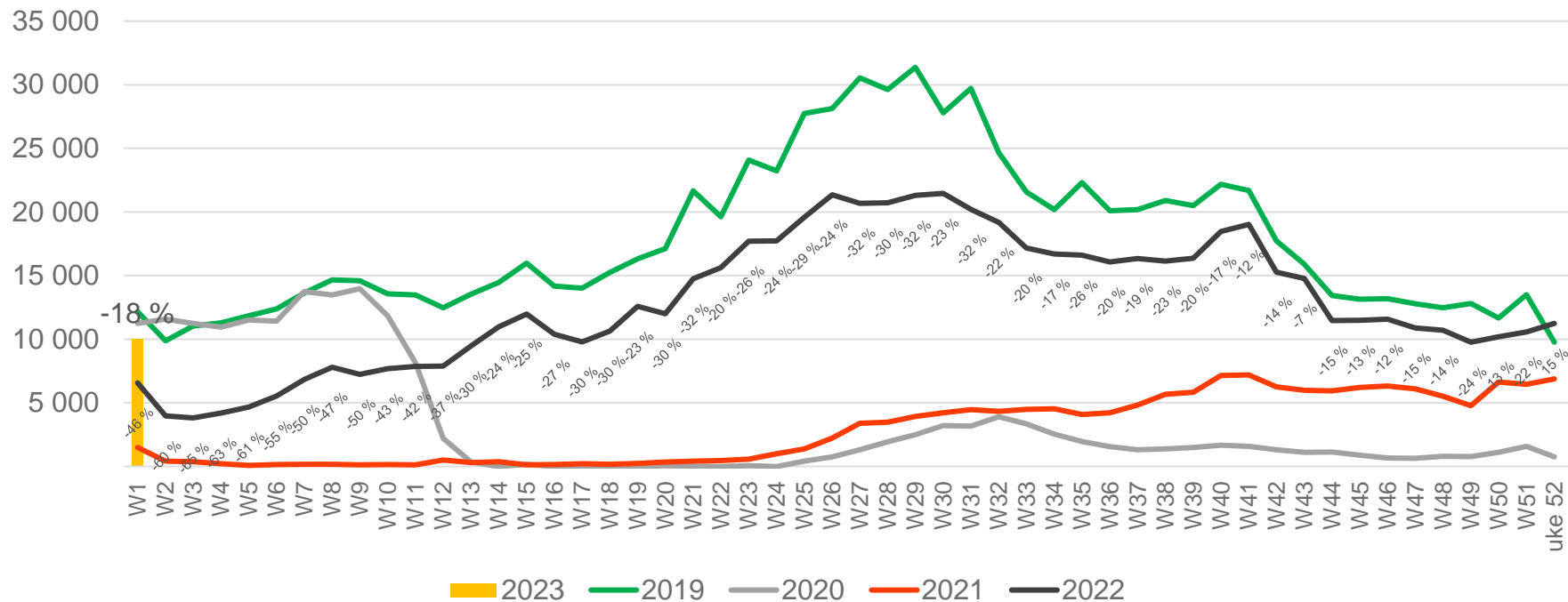
• Week 1 2019 is 31/12-18 – 6/1-19. Week 1 2020 is 30/12-19 – 5/1-20. Week 52 2021 is 27/12-21 – 2/1-22. Week 52 2022 is 26/12-22 – 1/1-23.

Passengers TRD total per day, week 1



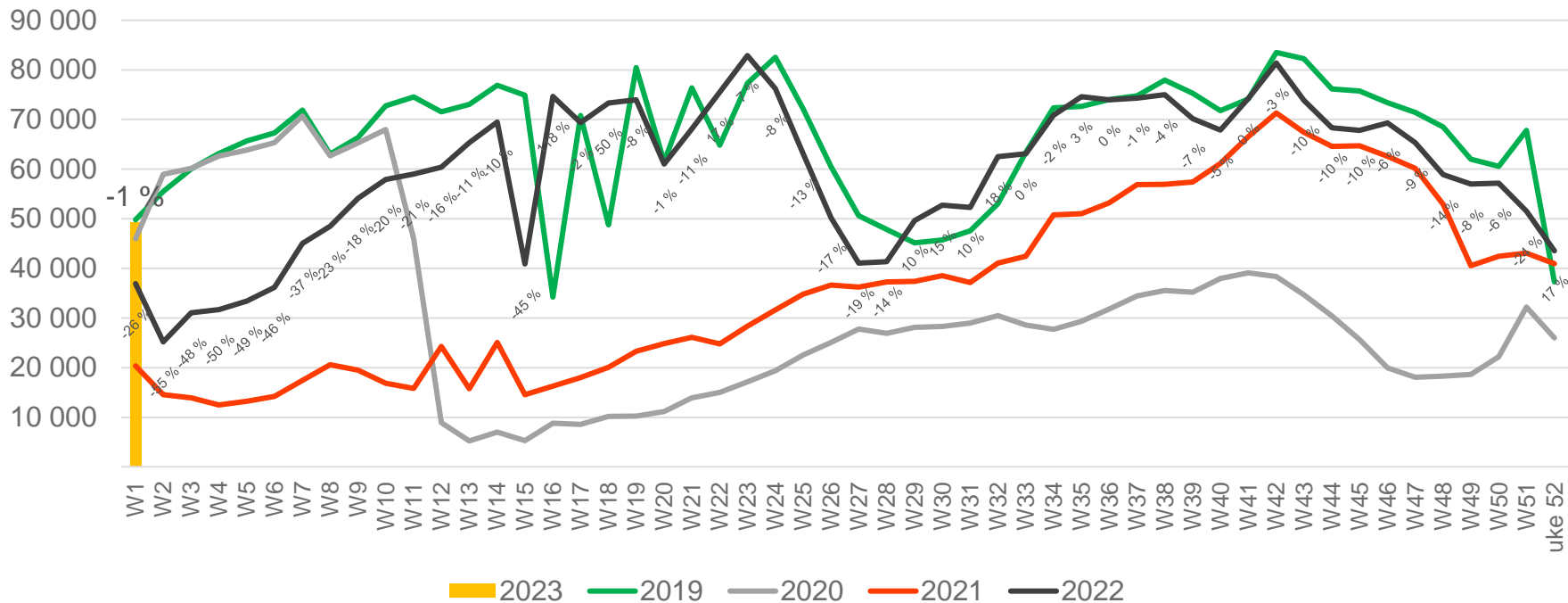
The deviation is measured towards 2019.

Passengers TRD international per week



• Week 1 2019 is 31/12-18 – 6/1-19. Week 1 2020 is 30/12-19 – 5/1-20. Week 52 2021 is 27/12-21 – 2/1-22. Week 52 2022 is 26/12-22 – 1/1-23.

Passengers TRD domestic per week



• Week 1 2019 is 31/12-18 – 6/1-19. Week 1 2020 is 30/12-19 – 5/1-20. Week 52 2021 is 27/12-21 – 2/1-22. Week 52 2022 is 26/12-22 – 1/1-23.