



Passenger numbers per week

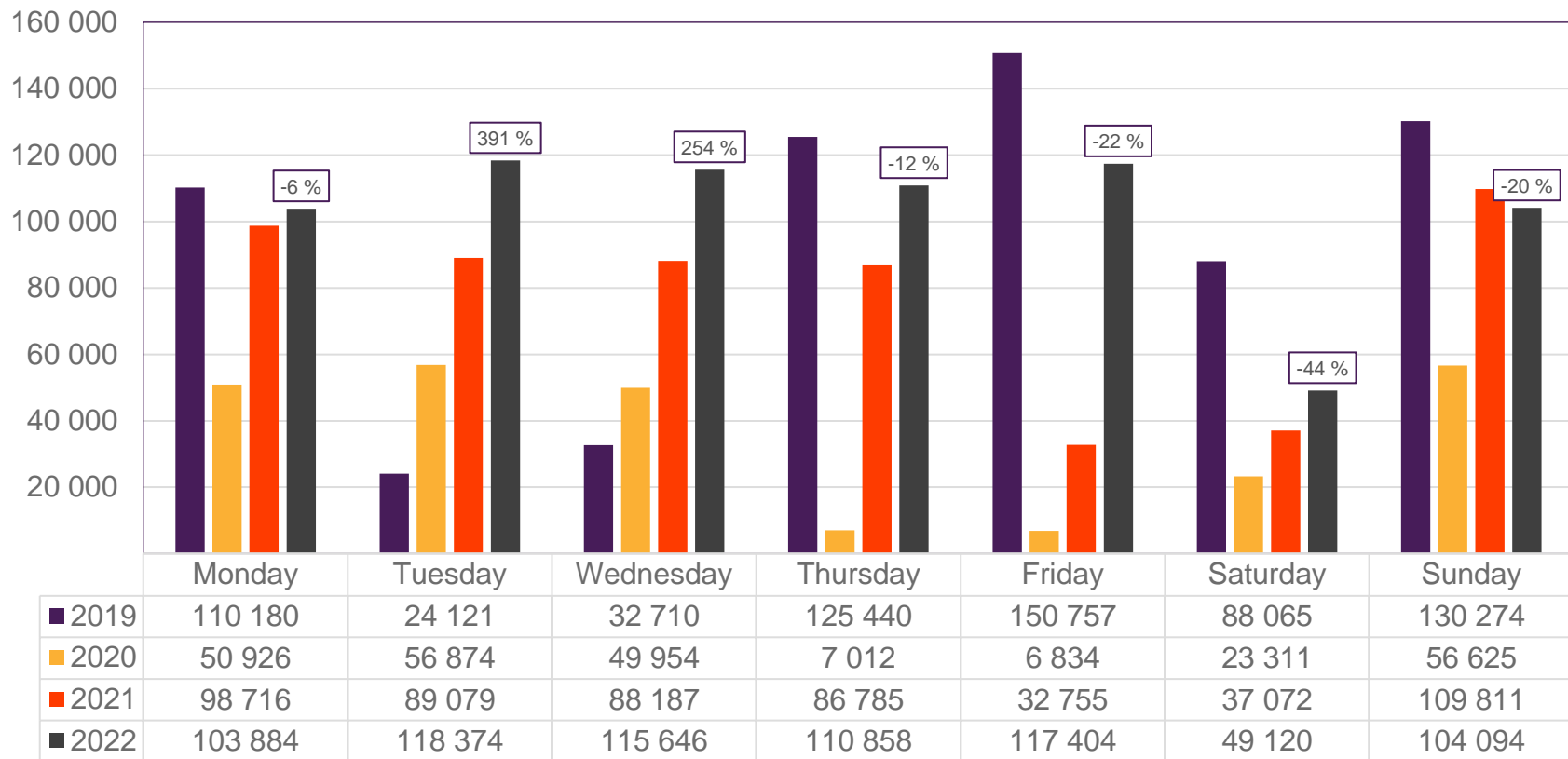
## Preliminary figures

- The figures for the previous week are preliminary. It takes some time for all passenger numbers to be reported, so the figures for the previous week may be 1-2% lower than the final figures.
- The figures are taken from Avinor's traffic database.
- Week 1 2019 include numbers from 2018 (31/12 2018)  
Week 1 2020 include numbers from 2019 (30-31/12 2019)  
Week 52 2021 include numbers from 2022 (1-2/1 2022)  
Week 52 2022 include numbers from 2023 (1/1 2023)

# Top 10 airports, total week 52

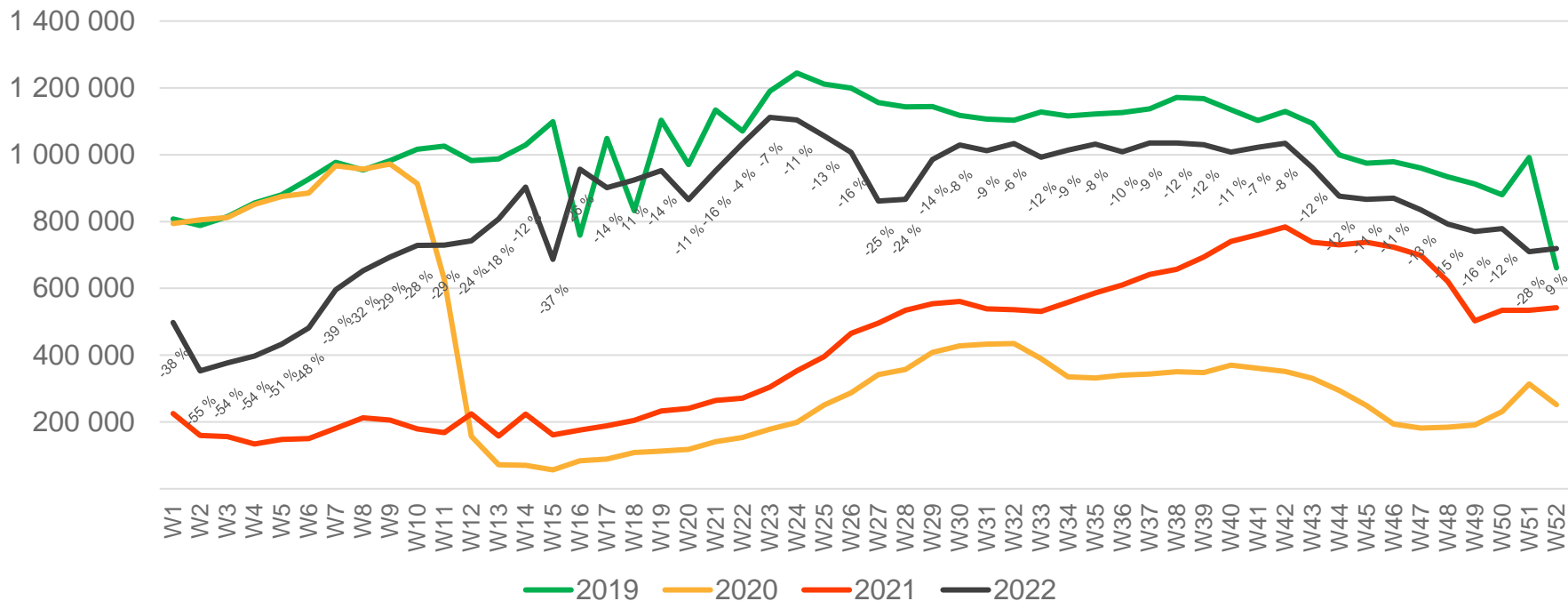
Airport	2019	2020	2021	2022	2022 vs. 2019		2022 vs. 2021	
					Change	Change %	Change	Change %
Oslo/Gardermoen	369 703	94 311	259 354	374 688	4 985	1 %	115 334	44 %
Bergen/Flesland	74 448	36 070	72 168	87 724	13 276	18 %	15 556	22 %
Trondheim/Værnes	47 040	26 744	47 809	54 752	7 712	16 %	6 943	15 %
Stavanger/Sola	46 218	19 923	36 536	50 984	4 766	10 %	14 448	40 %
Tromsø/Langnes	34 487	18 393	35 935	47 223	12 736	37 %	11 288	31 %
Bodø	19 374	12 940	20 241	23 651	4 277	22 %	3 410	17 %
Ålesund/Vigra	13 986	6 555	12 115	14 662	676	5 %	2 547	21 %
Harstad/Narvik/Evenes	9 597	6 443	12 092	12 426	2 829	29 %	334	3 %
Kristiansand/Kjevik	10 932	4 684	8 471	10 788	-144	-1 %	2 317	27 %
Bardufoss	3 817	1 527	2 522	3 359	-458	-12 %	837	33 %

# Passengers Avinor total per day, week 52



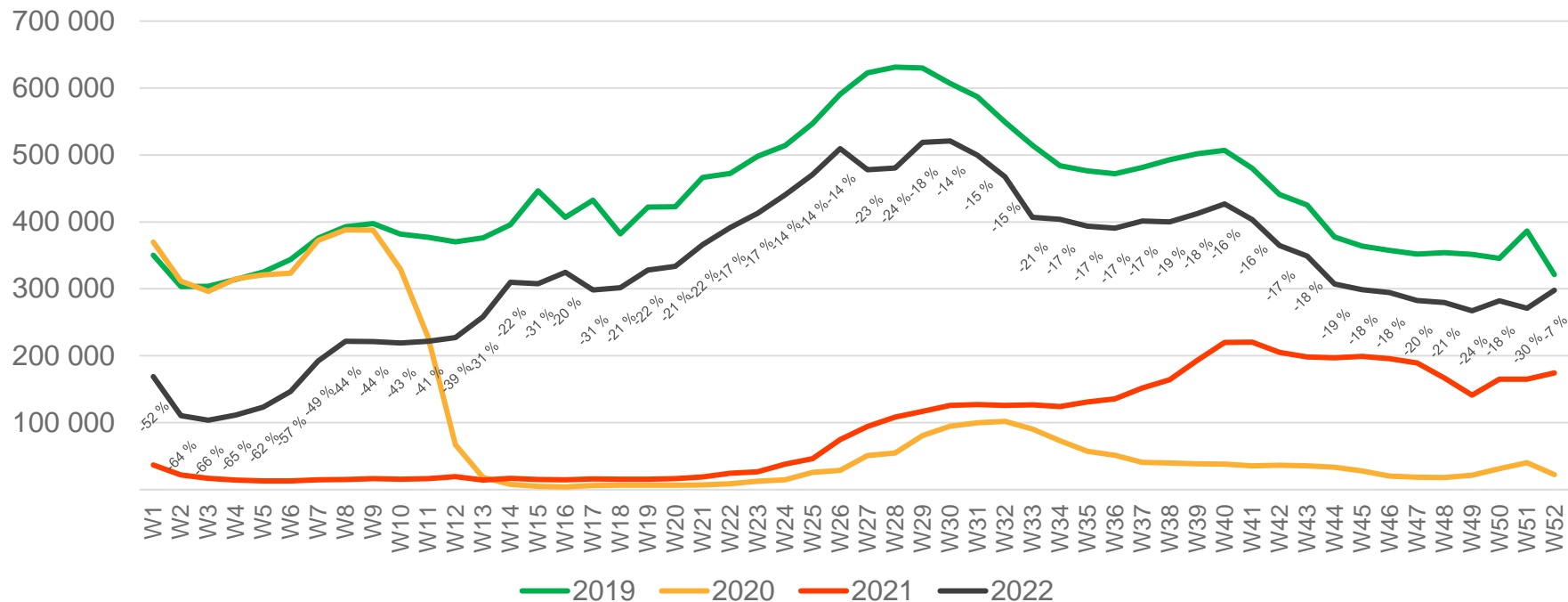
The deviation is measured towards 2019.

# Passengers Avinor total per week



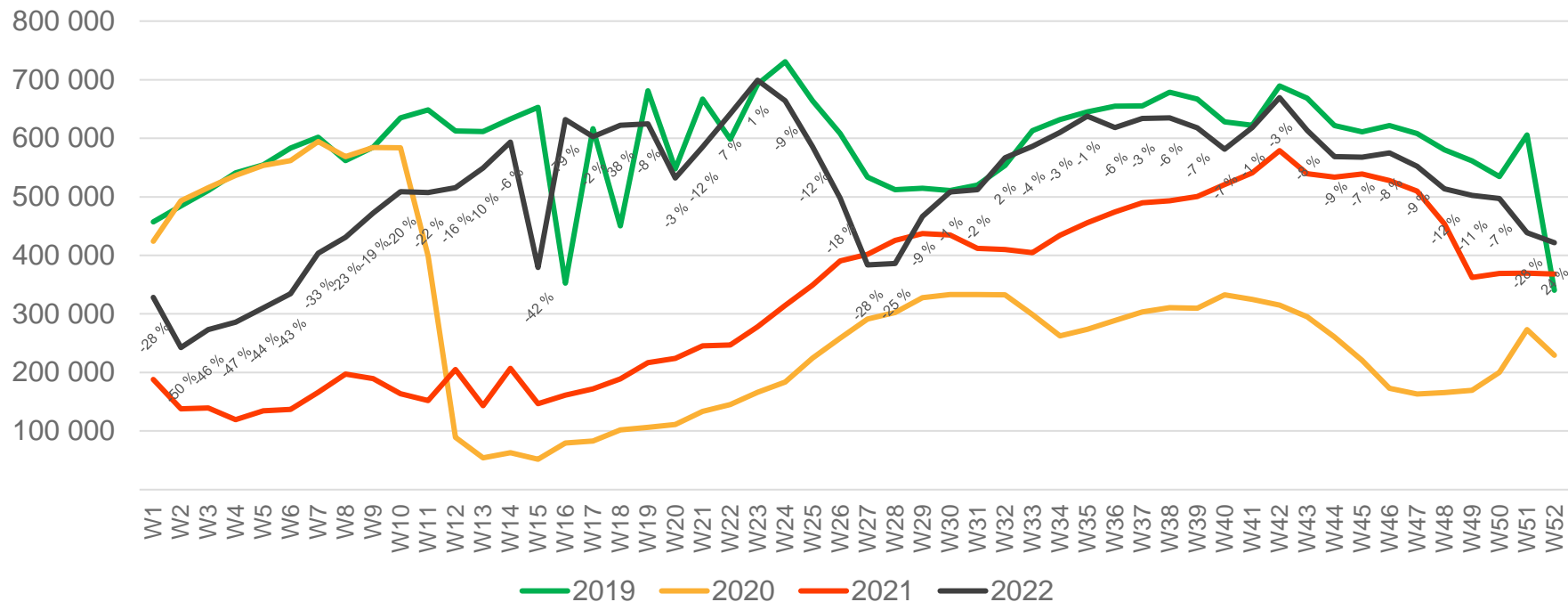
• Week 1 2019 is 31/12-18 – 6/1-19. Week 1 2020 is 30/12-19 – 5/1-20. Week 52 2021 is 27/12-21 – 2/1-22. Week 52 2022 is 26/12-22 – 1/1-23.

# Passengers Avinor international per week



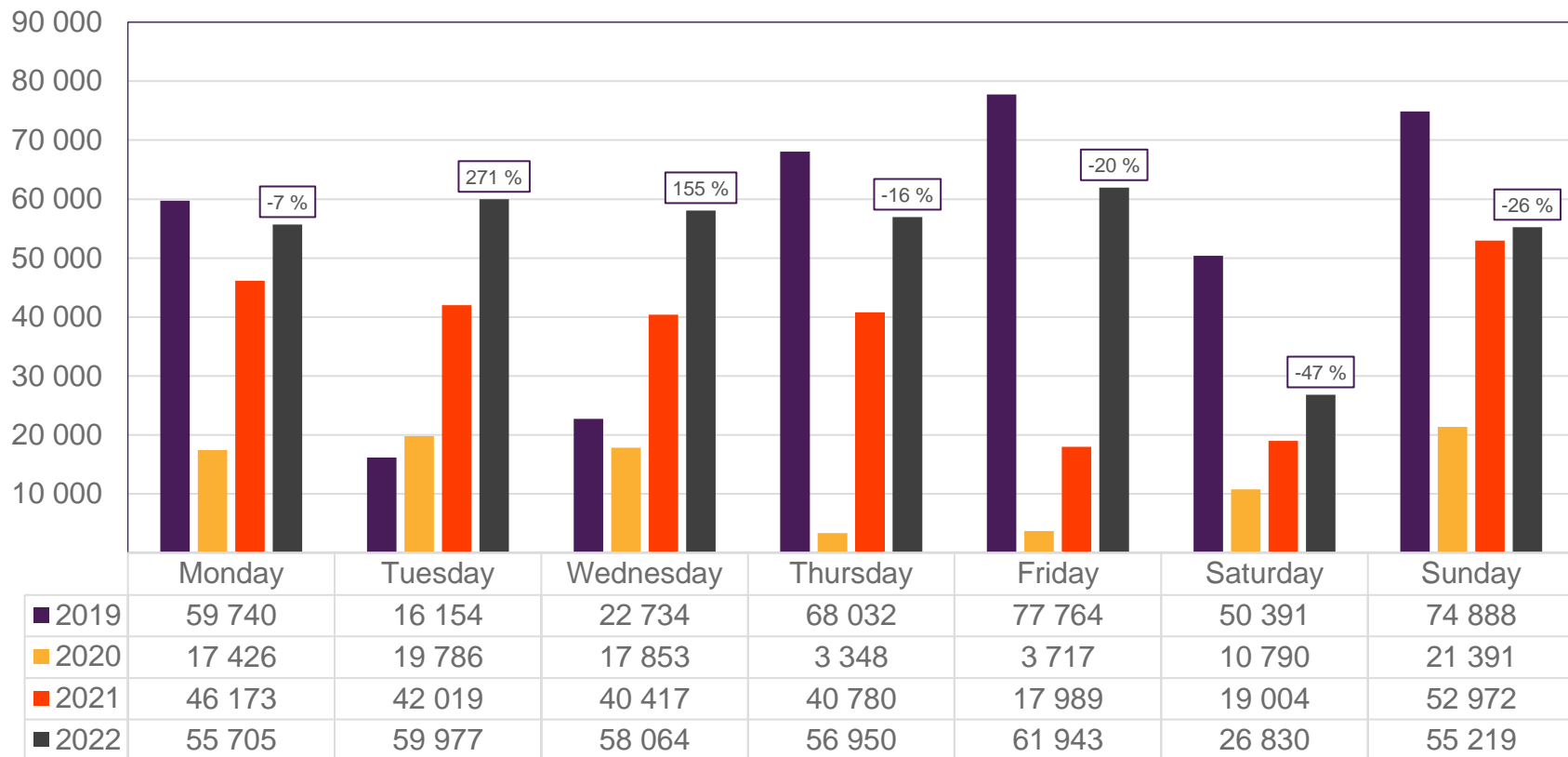
• Week 1 2019 is 31/12-18 – 6/1-19. Week 1 2020 is 30/12-19 – 5/1-20. Week 52 2021 is 27/12-21 – 2/1-22. Week 52 2022 is 26/12-22 – 1/1-23.

# Passengers Avinor domestic per week



• Week 1 2019 is 31/12-18 – 6/1-19. Week 1 2020 is 30/12-19 – 5/1-20. Week 52 2021 is 27/12-21 – 2/1-22. Week 52 2022 is 26/12-22 – 1/1-23.

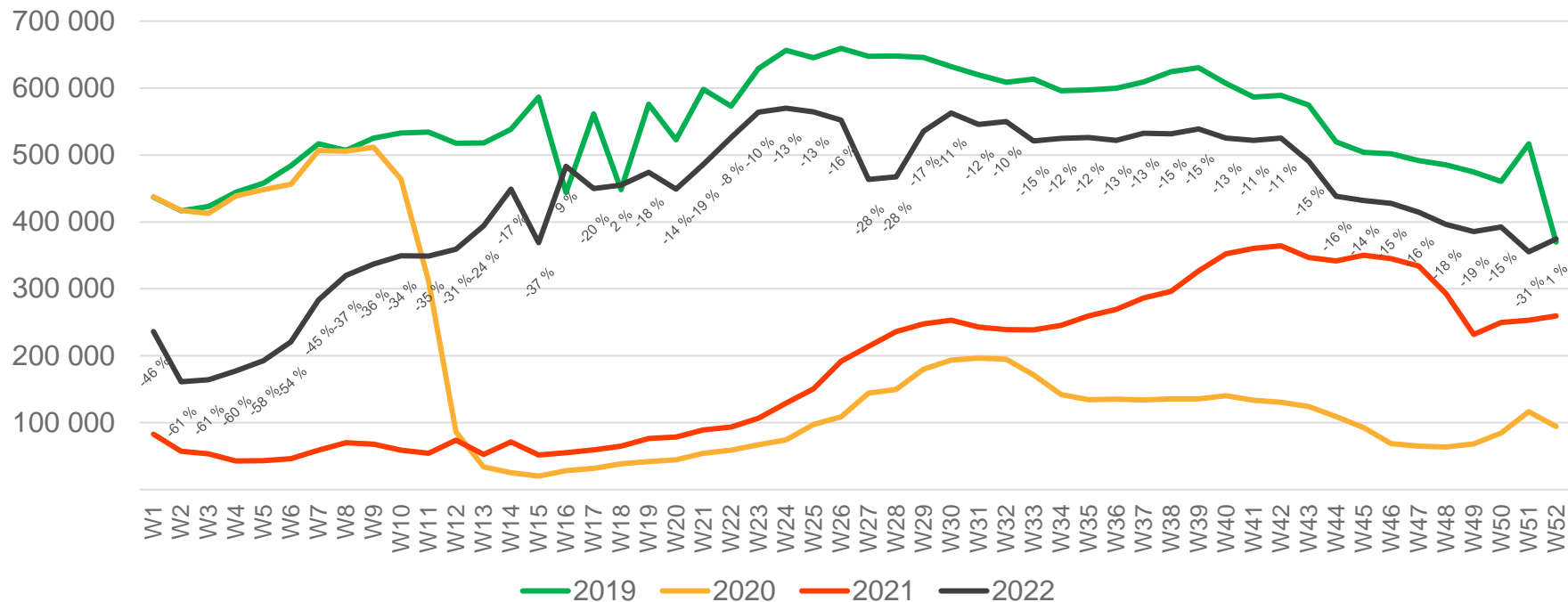
# Passengers OSL total per day, week 52



The deviation is measured towards 2019.

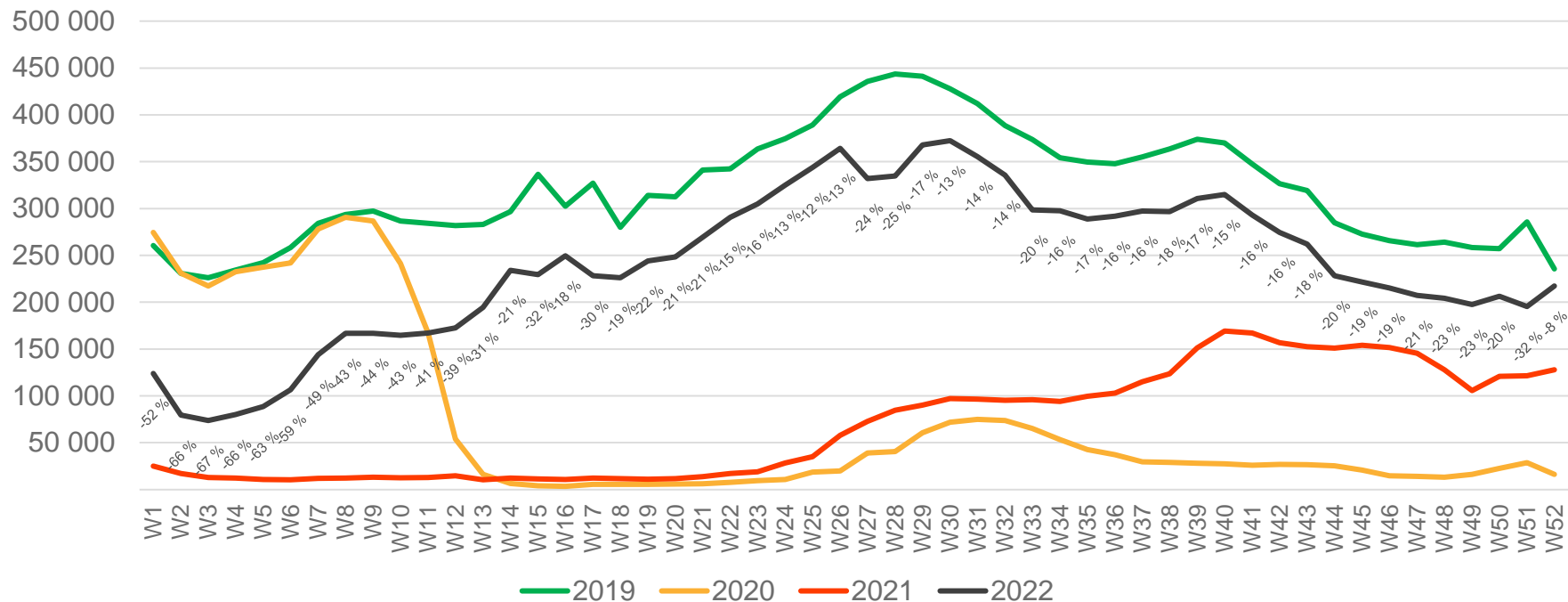


# Passengers OSL total per week



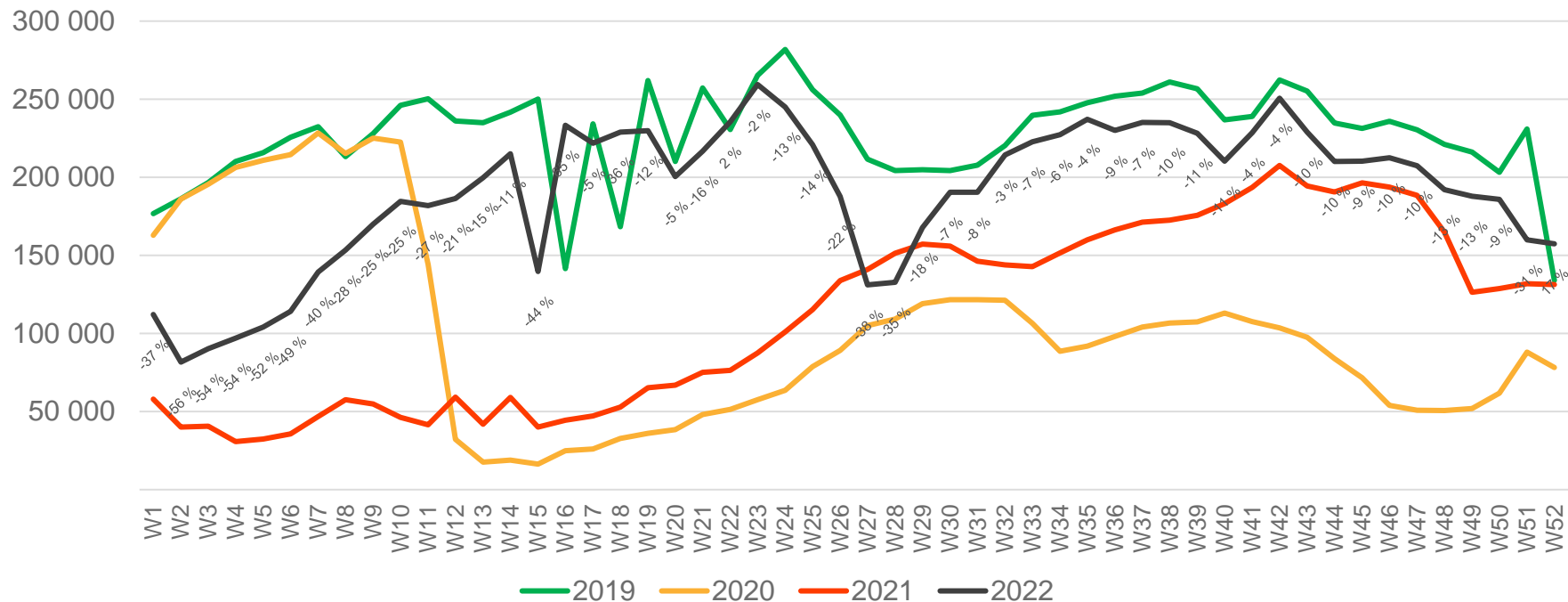
• Week 1 2019 is 31/12-18 – 6/1-19. Week 1 2020 is 30/12-19 – 5/1-20. Week 52 2021 is 27/12-21 – 2/1-22. Week 52 2022 is 26/12-22 – 1/1-23.

# Passengers OSL international per week



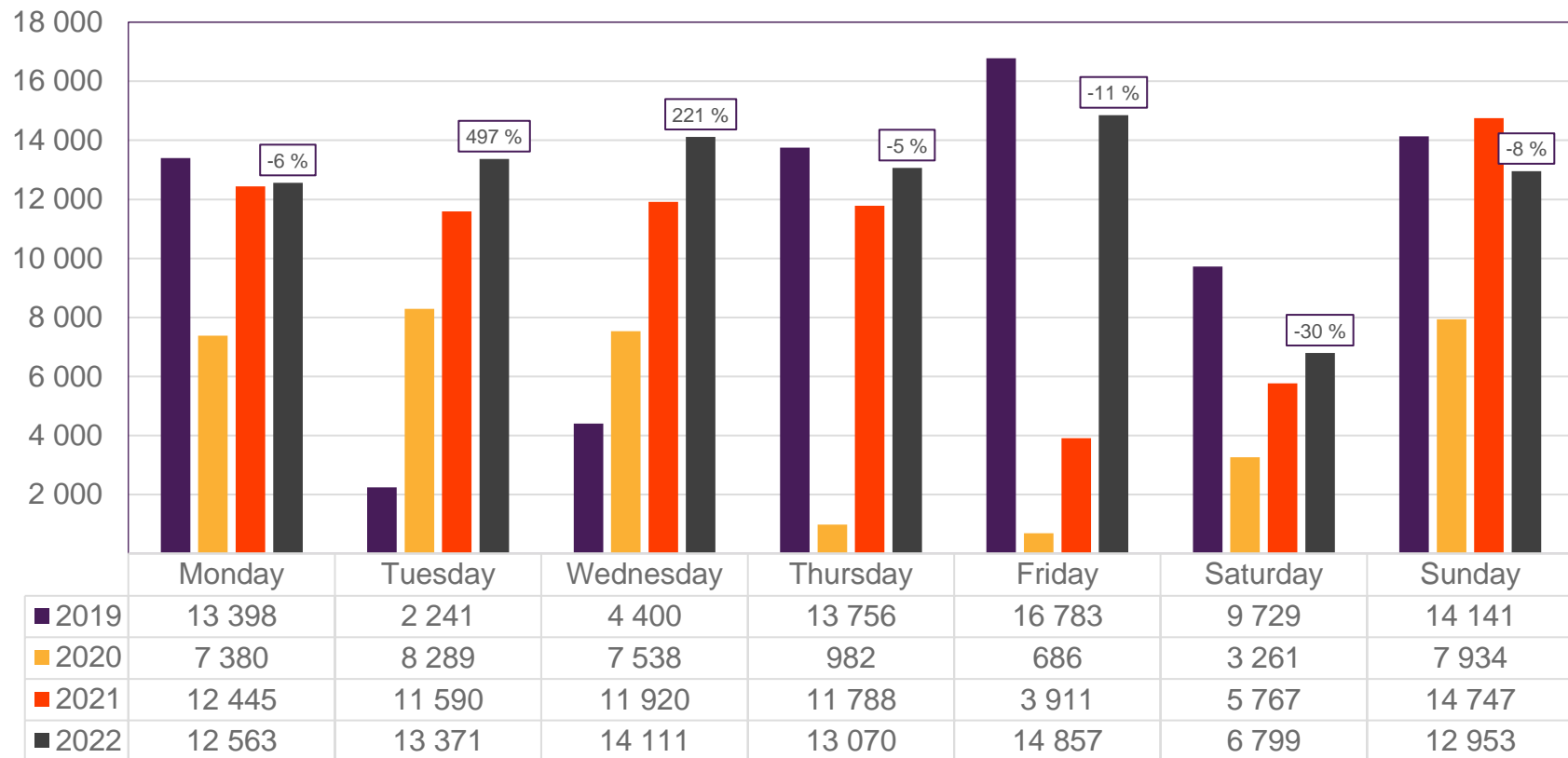
• Week 1 2019 is 31/12-18 – 6/1-19. Week 1 2020 is 30/12-19 – 5/1-20. Week 52 2021 is 27/12-21 – 2/1-22. Week 52 2022 is 26/12-22 – 1/1-23.

# Passengers OSL domestic per week



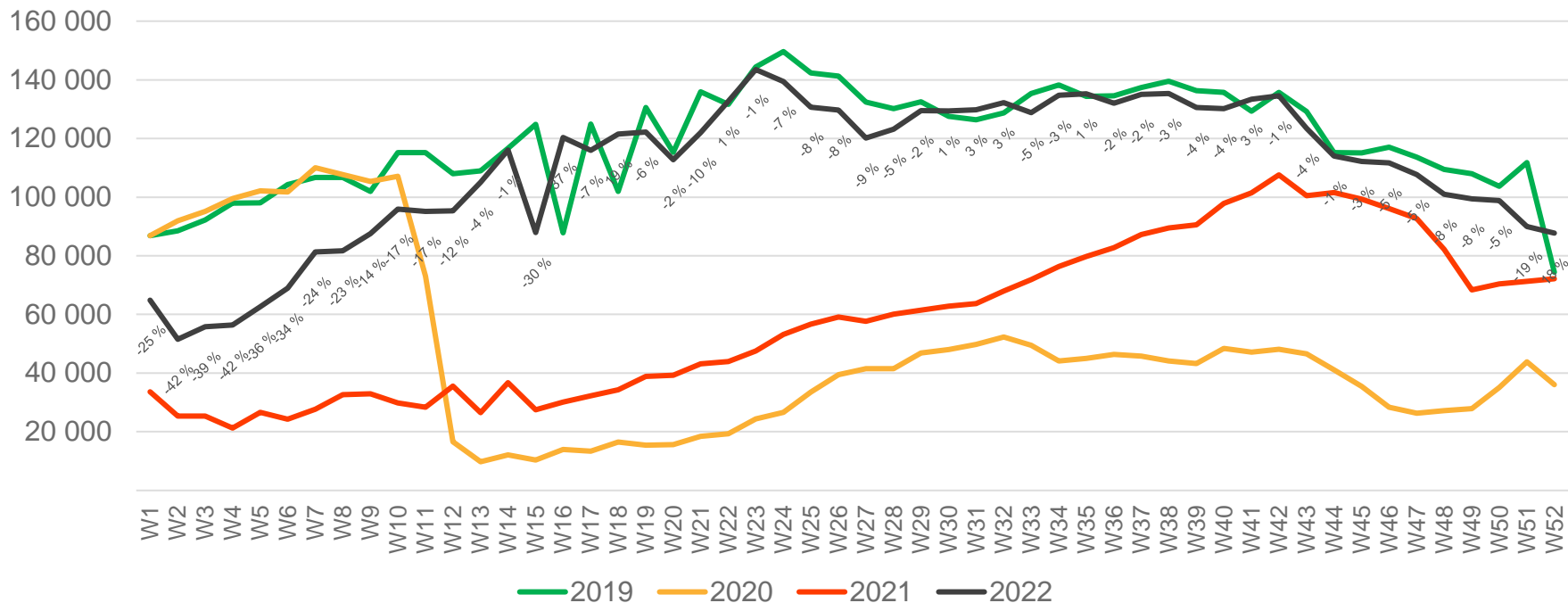
• Week 1 2019 is 31/12-18 – 6/1-19. Week 1 2020 is 30/12-19 – 5/1-20. Week 52 2021 is 27/12-21 – 2/1-22. Week 52 2022 is 26/12-22 – 1/1-23.

# Passengers BGO total per day, week 52



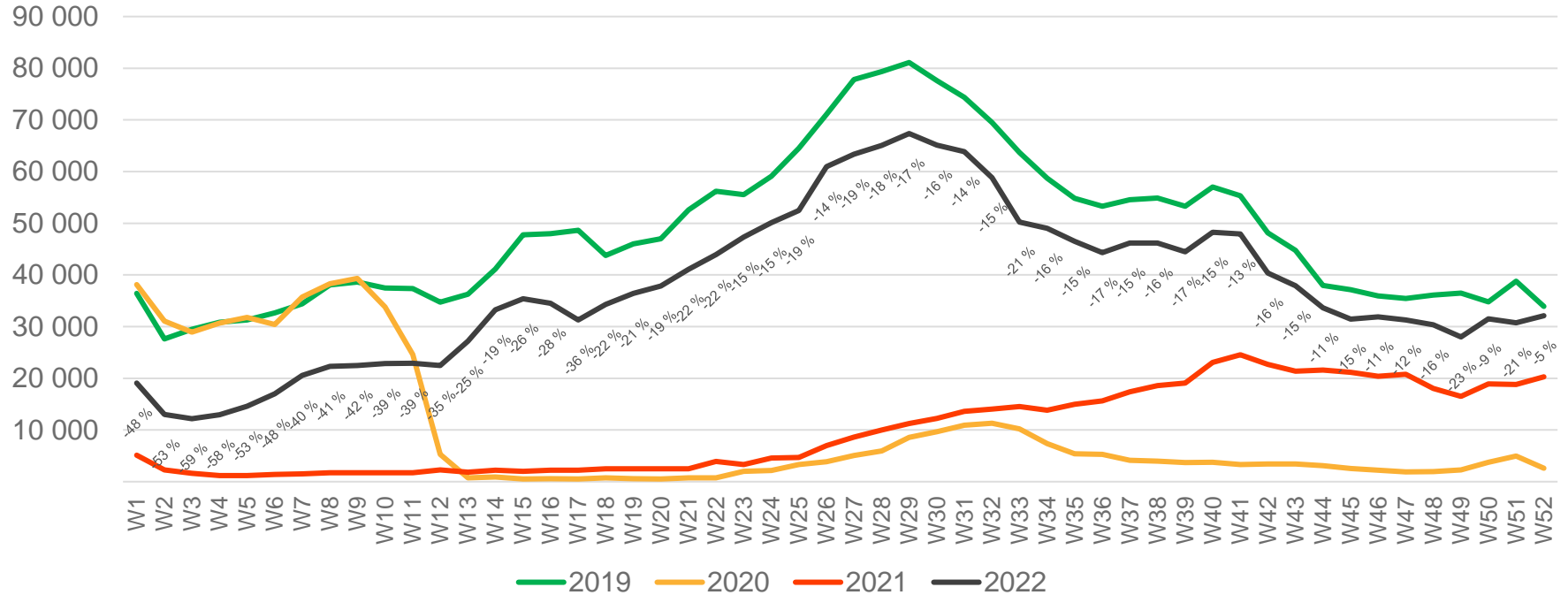
The deviation is measured towards 2019.

# Passengers BGO total per week



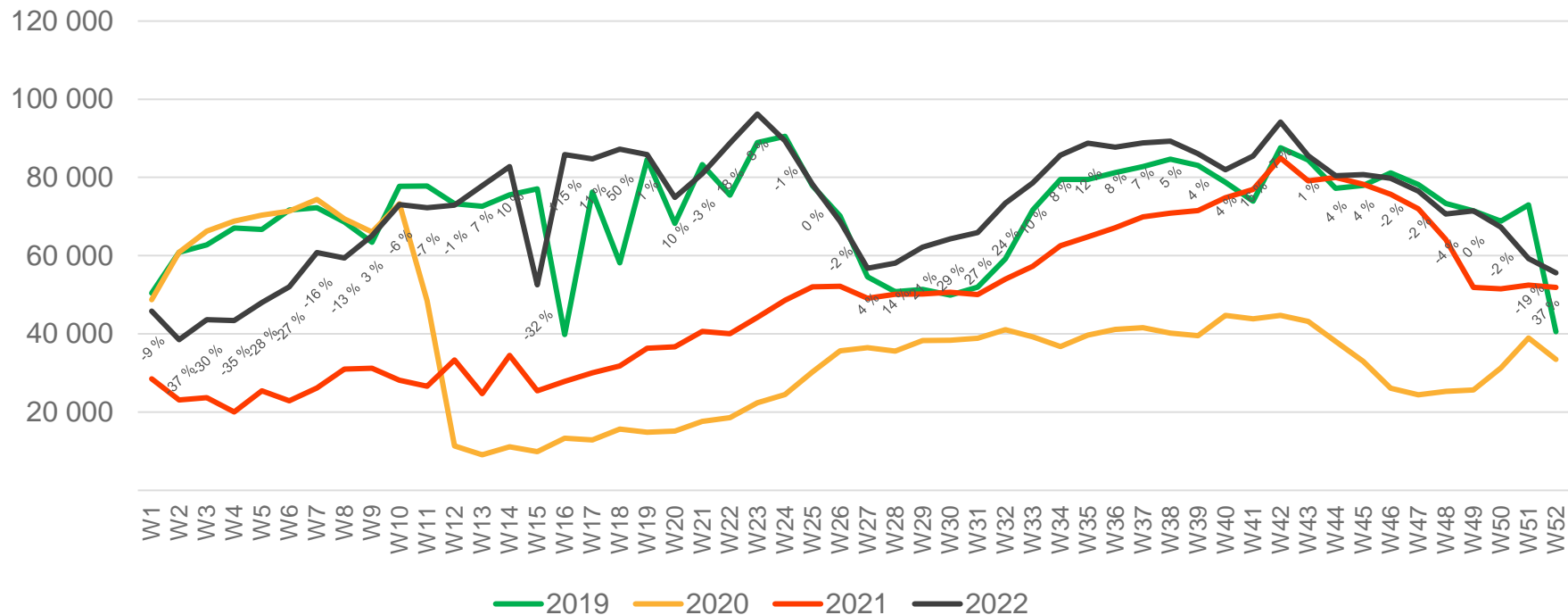
• Week 1 2019 is 31/12-18 – 6/1-19. Week 1 2020 is 30/12-19 – 5/1-20. Week 52 2021 is 27/12-21 – 2/1-22. Week 52 2022 is 26/12-22 – 1/1-23.

# Passengers BGO international per week



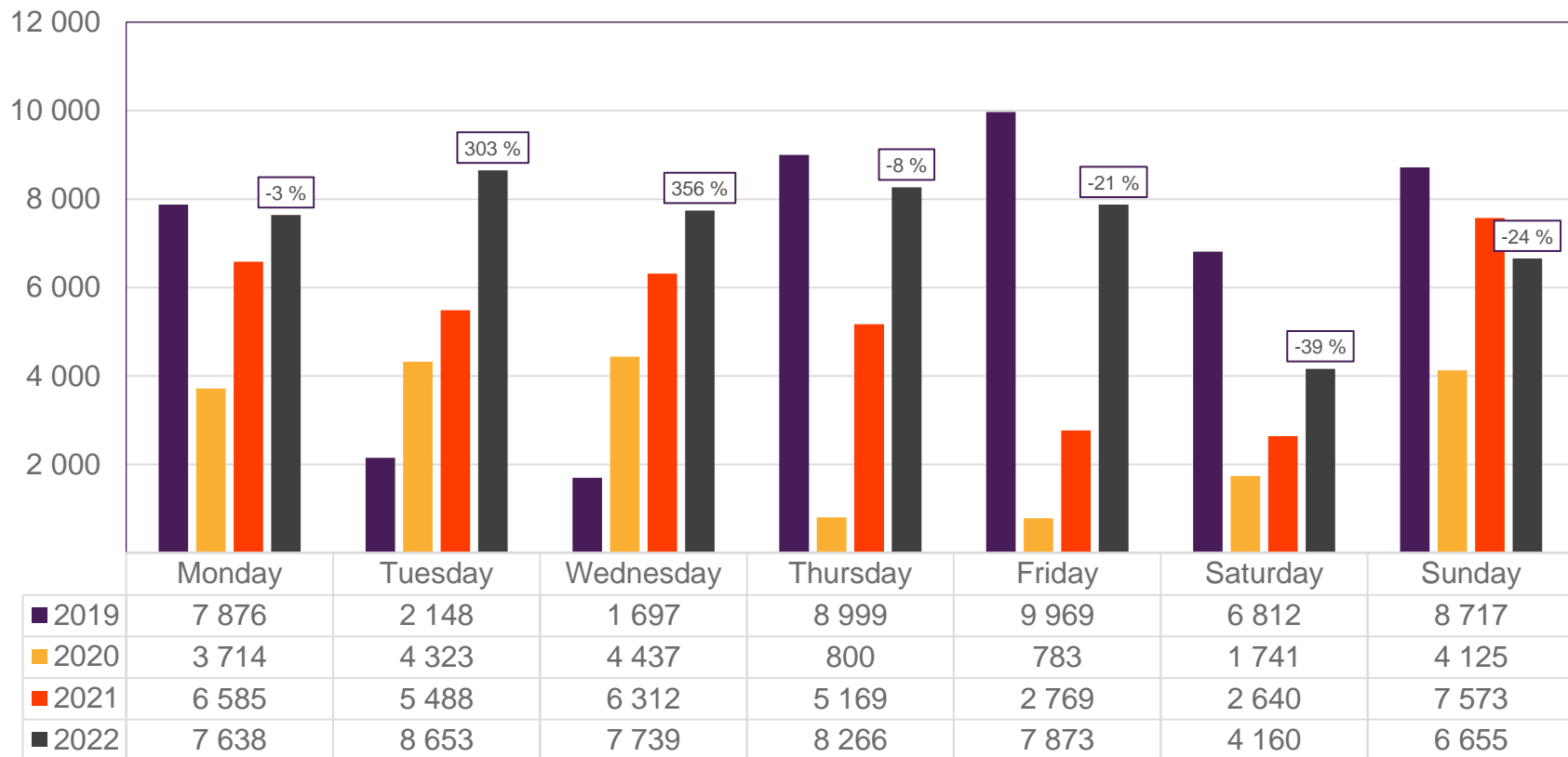
• Week 1 2019 is 31/12-18 – 6/1-19. Week 1 2020 is 30/12-19 – 5/1-20. Week 52 2021 is 27/12-21 – 2/1-22. Week 52 2022 is 26/12-22 – 1/1-23.

# Passengers BGO domestic per week



• Week 1 2019 is 31/12-18 – 6/1-19. Week 1 2020 is 30/12-19 – 5/1-20. Week 52 2021 is 27/12-21 – 2/1-22. Week 52 2022 is 26/12-22 – 1/1-23.

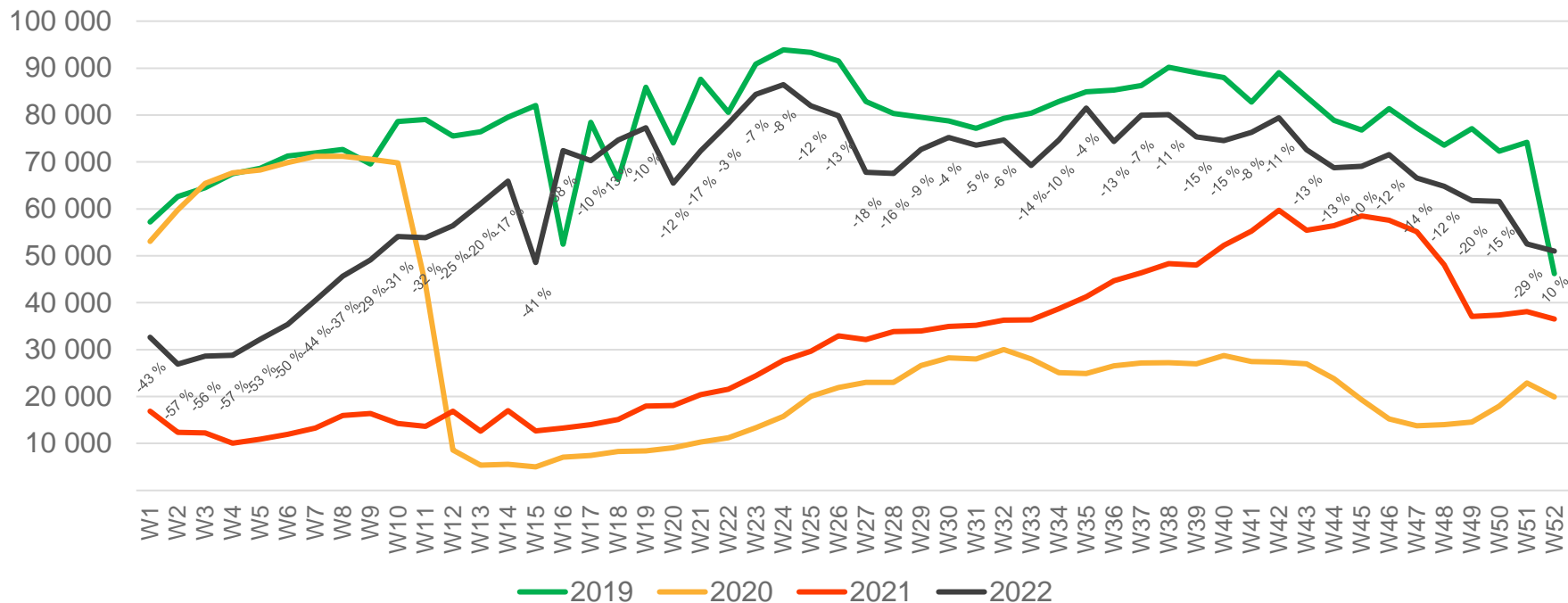
# Passengers SVG total per day, week 52



The deviation is measured towards 2019.

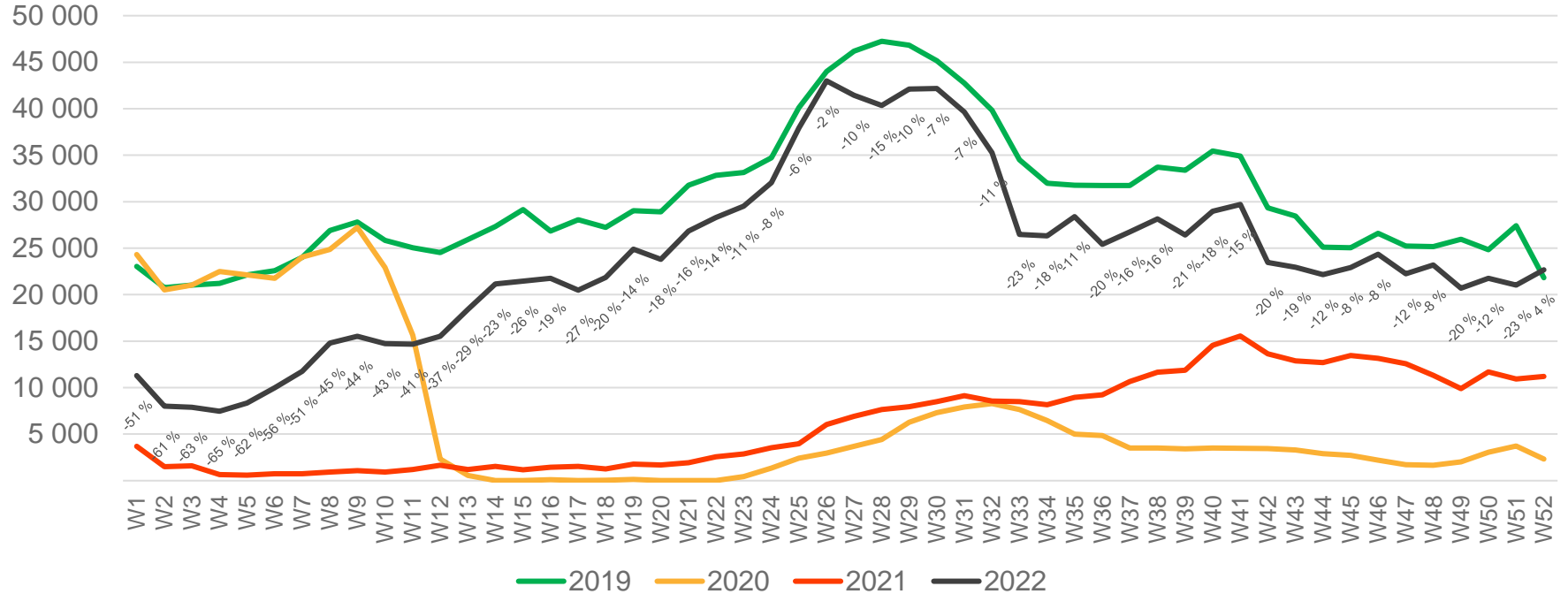


# Passengers SVG total per week



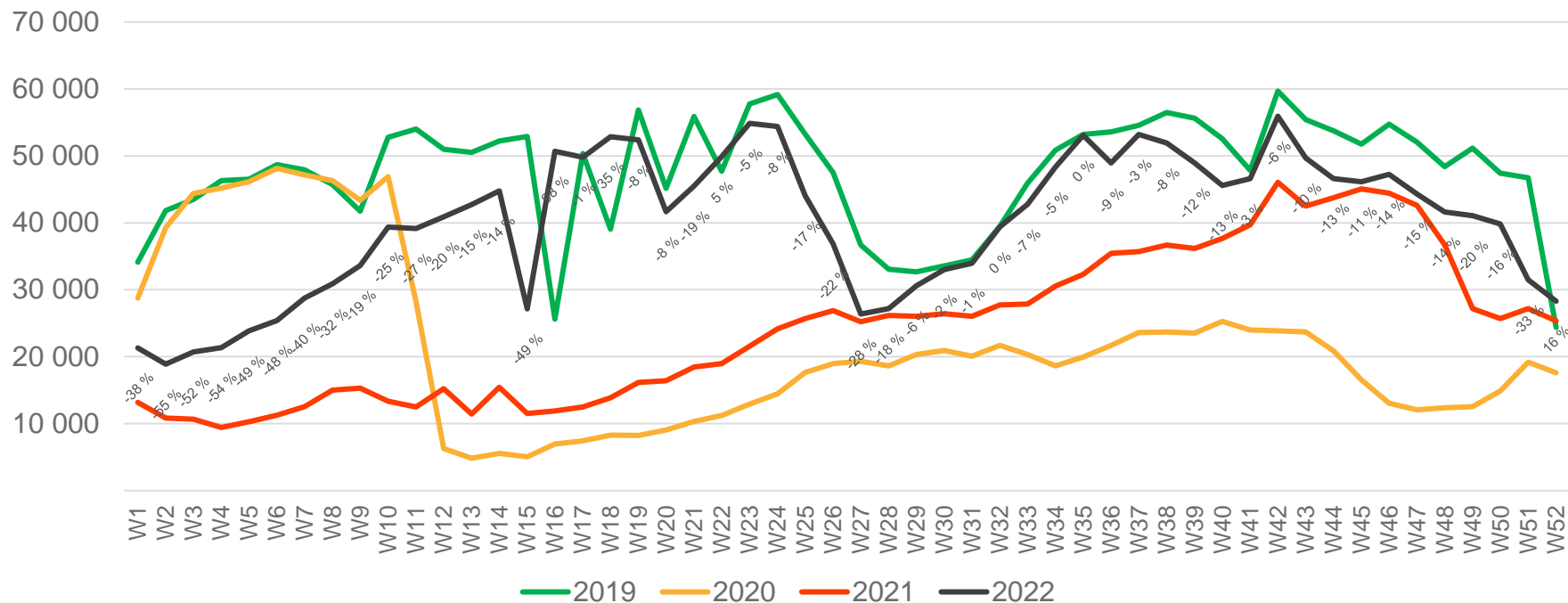
• Week 1 2019 is 31/12-18 – 6/1-19. Week 1 2020 is 30/12-19 – 5/1-20. Week 52 2021 is 27/12-21 – 2/1-22. Week 52 2022 is 26/12-22 – 1/1-23.

# Passengers SVG international per week



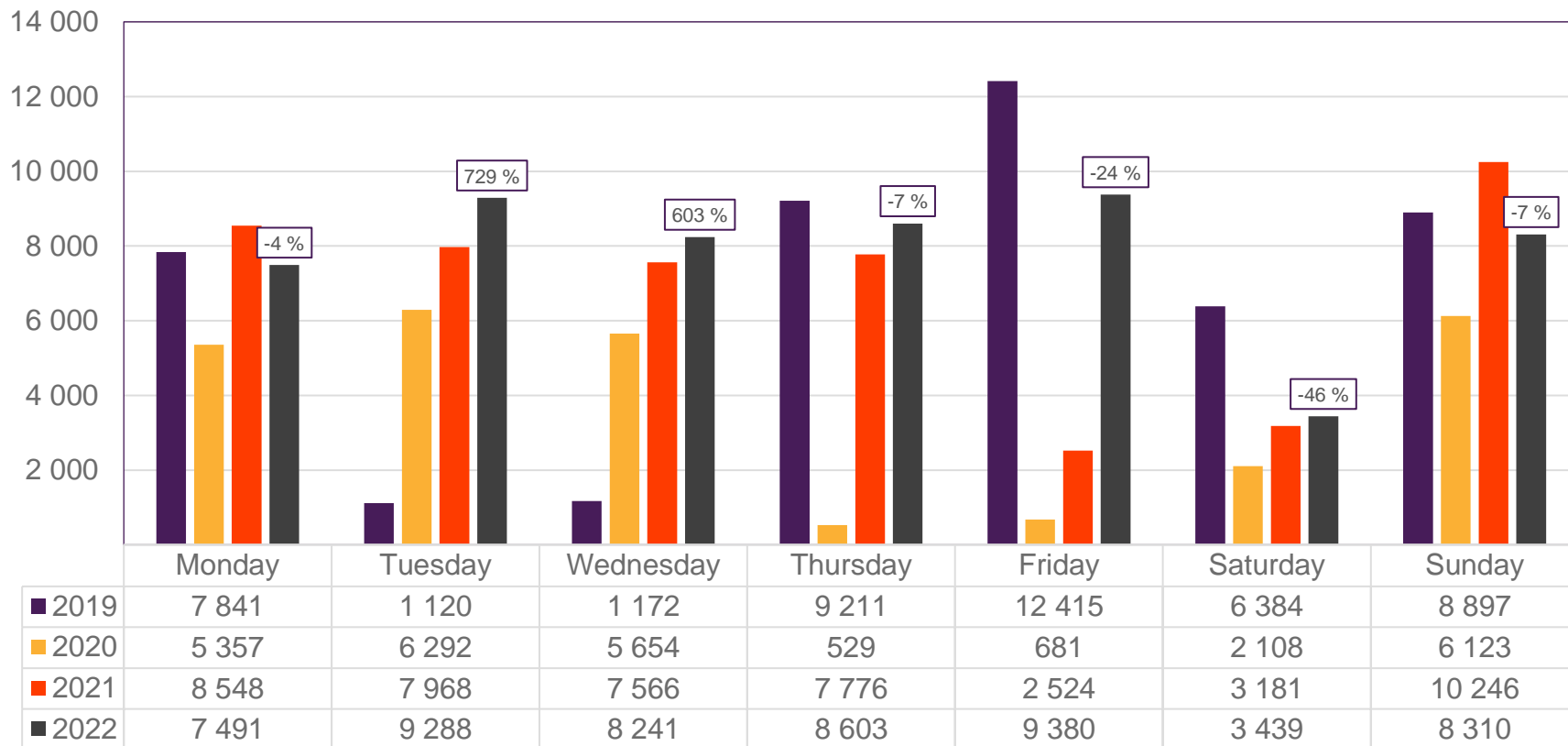
• Week 1 2019 is 31/12-18 – 6/1-19. Week 1 2020 is 30/12-19 – 5/1-20. Week 52 2021 is 27/12-21 – 2/1-22. Week 52 2022 is 26/12-22 – 1/1-23.

# Passengers SVG domestic per week



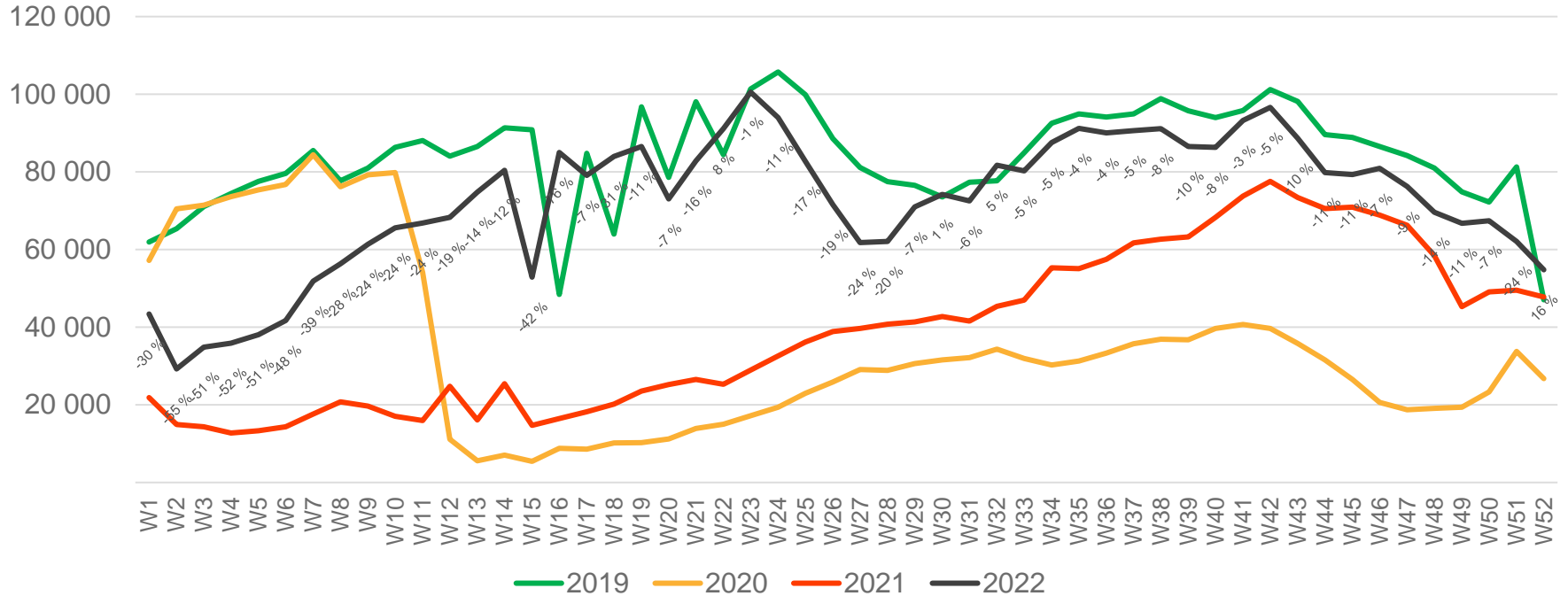
• Week 1 2019 is 31/12-18 – 6/1-19. Week 1 2020 is 30/12-19 – 5/1-20. Week 52 2021 is 27/12-21 – 2/1-22. Week 52 2022 is 26/12-22 – 1/1-23.

# Passengers TRD total per day, week 52



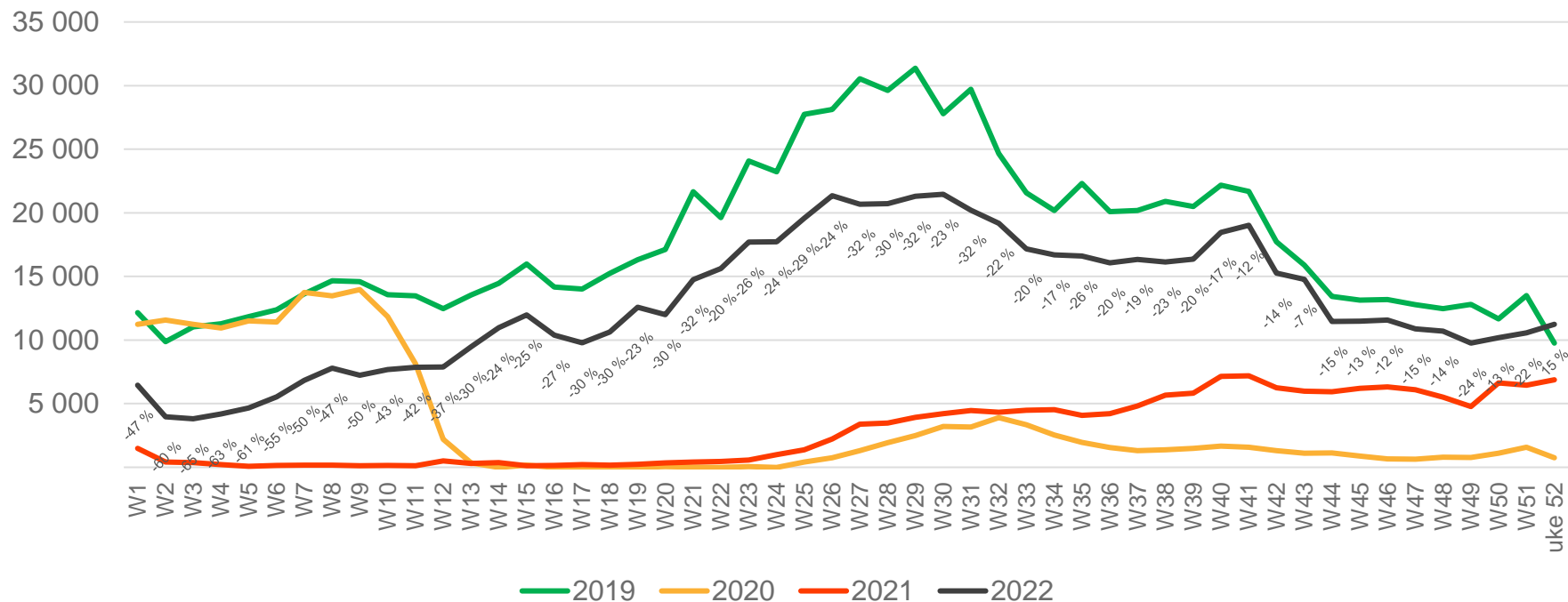
The deviation is measured towards 2019.

# Passengers TRD total per week



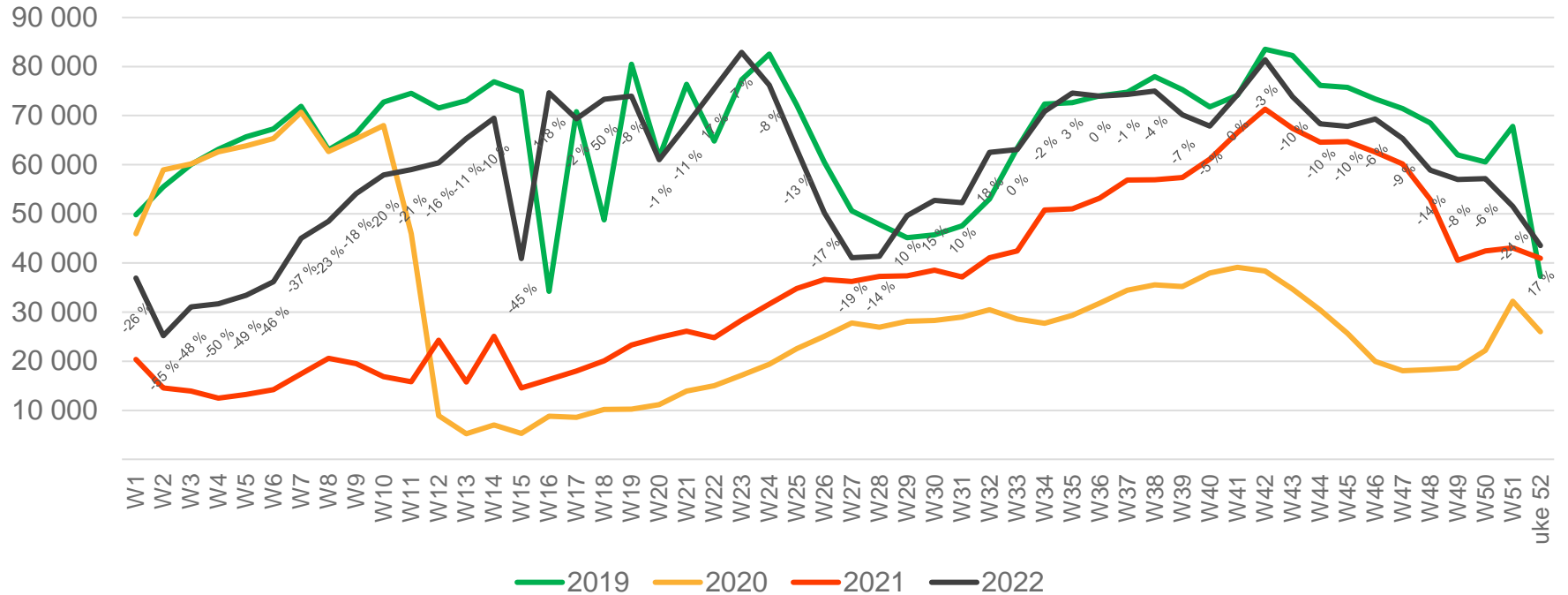
• Week 1 2019 is 31/12-18 – 6/1-19. Week 1 2020 is 30/12-19 – 5/1-20. Week 52 2021 is 27/12-21 – 2/1-22. Week 52 2022 is 26/12-22 – 1/1-23.

# Passengers TRD international per week



• Week 1 2019 is 31/12-18 – 6/1-19. Week 1 2020 is 30/12-19 – 5/1-20. Week 52 2021 is 27/12-21 – 2/1-22. Week 52 2022 is 26/12-22 – 1/1-23.

# Passengers TRD domestic per week



• Week 1 2019 is 31/12-18 – 6/1-19. Week 1 2020 is 30/12-19 – 5/1-20. Week 52 2021 is 27/12-21 – 2/1-22. Week 52 2022 is 26/12-22 – 1/1-23.