



Passenger numbers per week

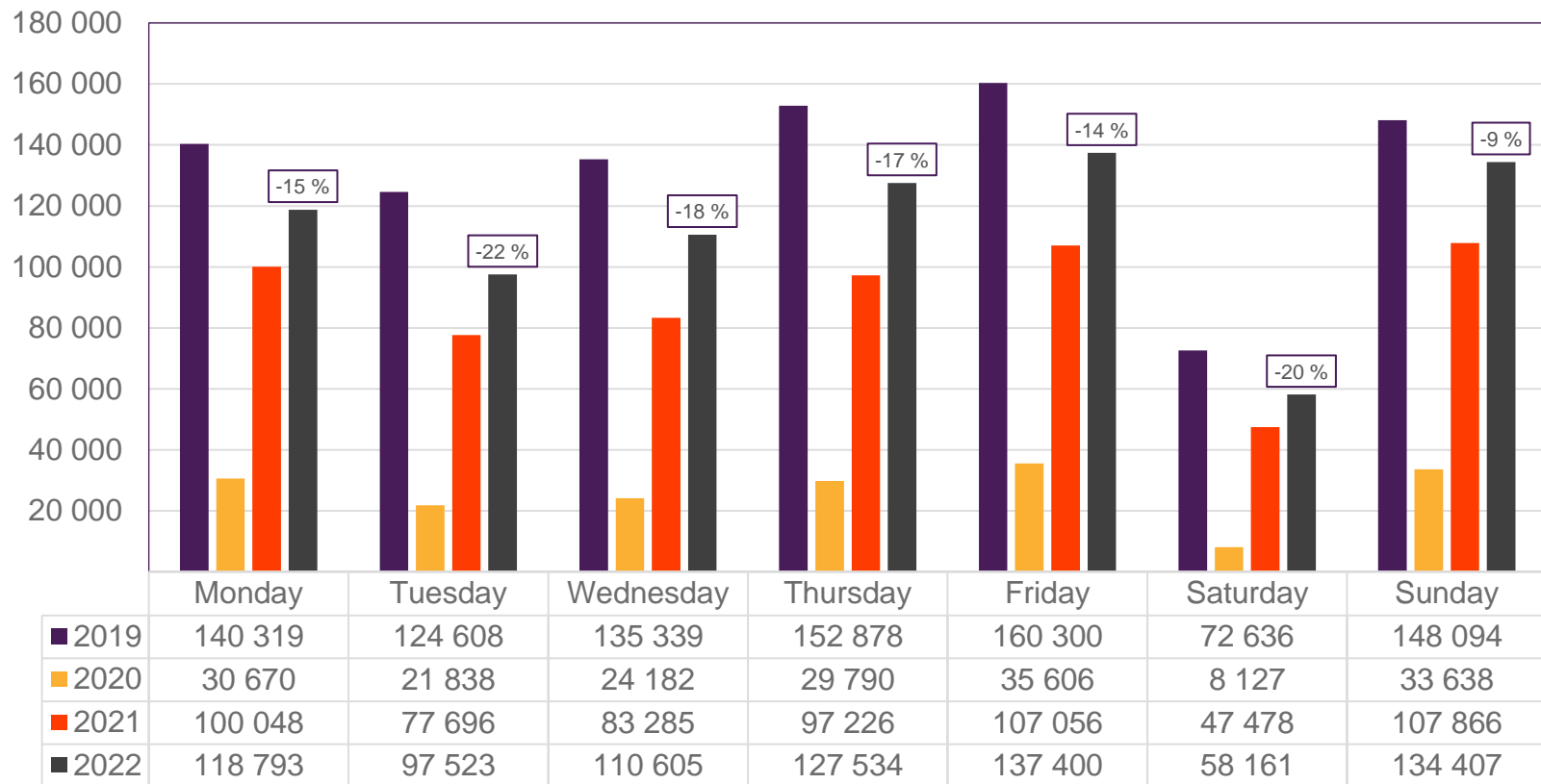
## Preliminary figures

- The figures for the previous week are preliminary. It takes some time for all passenger numbers to be reported, so the figures for the previous week may be 1-2% lower than the final figures.
- The figures are taken from Avinor's traffic database.
- Week 1 2019 include numbers from 2018 (31/12 2018)  
Week 1 2020 include numbers from 2019 (30-31/12 2019)  
Week 52 2021 include numbers from 2022 (1-2/1 2022)

# Top 10 airports, total week 48

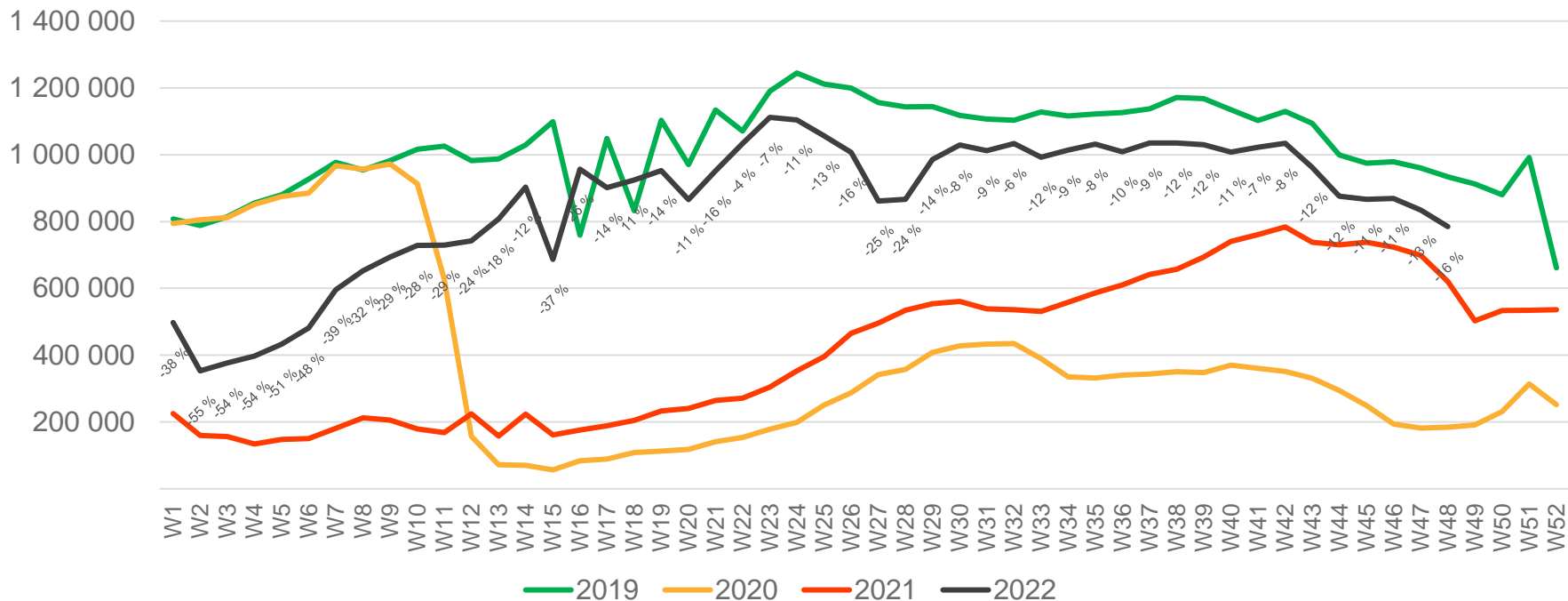
| Airport               | 2019    | 2020   | 2021    | 2022    | 2022 vs. 2019 |          | 2022 vs. 2021 |          |
|-----------------------|---------|--------|---------|---------|---------------|----------|---------------|----------|
|                       |         |        |         |         | Change        | Change % | Change        | Change % |
| Oslo/Gardermoen       | 485 317 | 63 756 | 292 747 | 393 632 | -91 685       | -19 %    | 100 885       | 34 %     |
| Bergen/Flesland       | 109 468 | 27 206 | 82 233  | 99 390  | -10 078       | -9 %     | 17 157        | 21 %     |
| Trondheim/Værnes      | 80 967  | 19 083 | 58 415  | 69 161  | -11 806       | -15 %    | 10 746        | 18 %     |
| Stavanger/Sola        | 73 579  | 14 031 | 48 062  | 64 209  | -9 370        | -13 %    | 16 147        | 34 %     |
| Tromsø/Langnes        | 43 800  | 15 853 | 37 168  | 39 741  | -4 059        | -9 %     | 2 573         | 7 %      |
| Bodø                  | 30 229  | 10 414 | 23 810  | 26 779  | -3 450        | -11 %    | 2 969         | 12 %     |
| Ålesund/Vigra         | 20 882  | 4 619  | 13 330  | 15 661  | -5 221        | -25 %    | 2 331         | 17 %     |
| Kristiansand/Kjevik   | 19 347  | 3 284  | 10 334  | 13 159  | -6 188        | -32 %    | 2 825         | 27 %     |
| Harstad/Narvik/Evenes | 12 365  | 3 318  | 9 761   | 11 314  | -1 051        | -8 %     | 1 553         | 16 %     |
| Bardufoss             | 3 971   | 977    | 2 520   | 4 079   | 108           | 3 %      | 1 559         | 62 %     |

# Passengers Avinor total per day, week 48



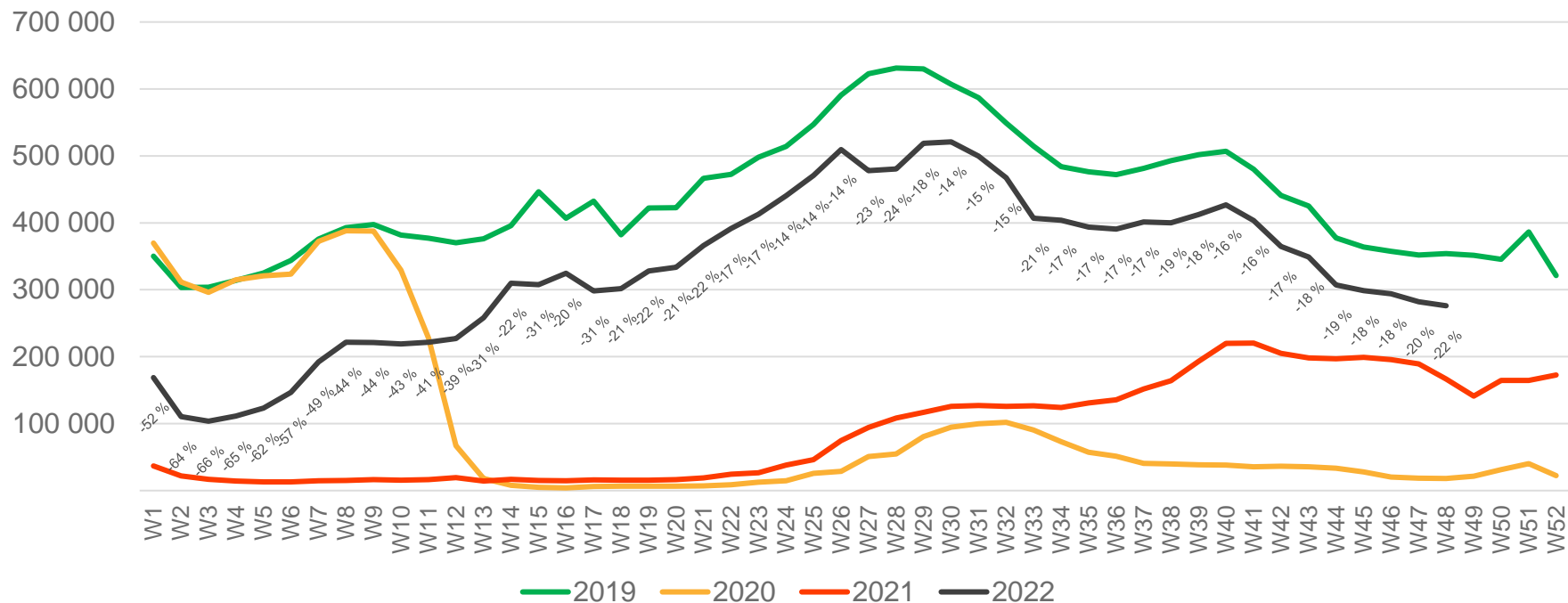
The deviation is measured towards 2019.

# Passengers Avinor total per week



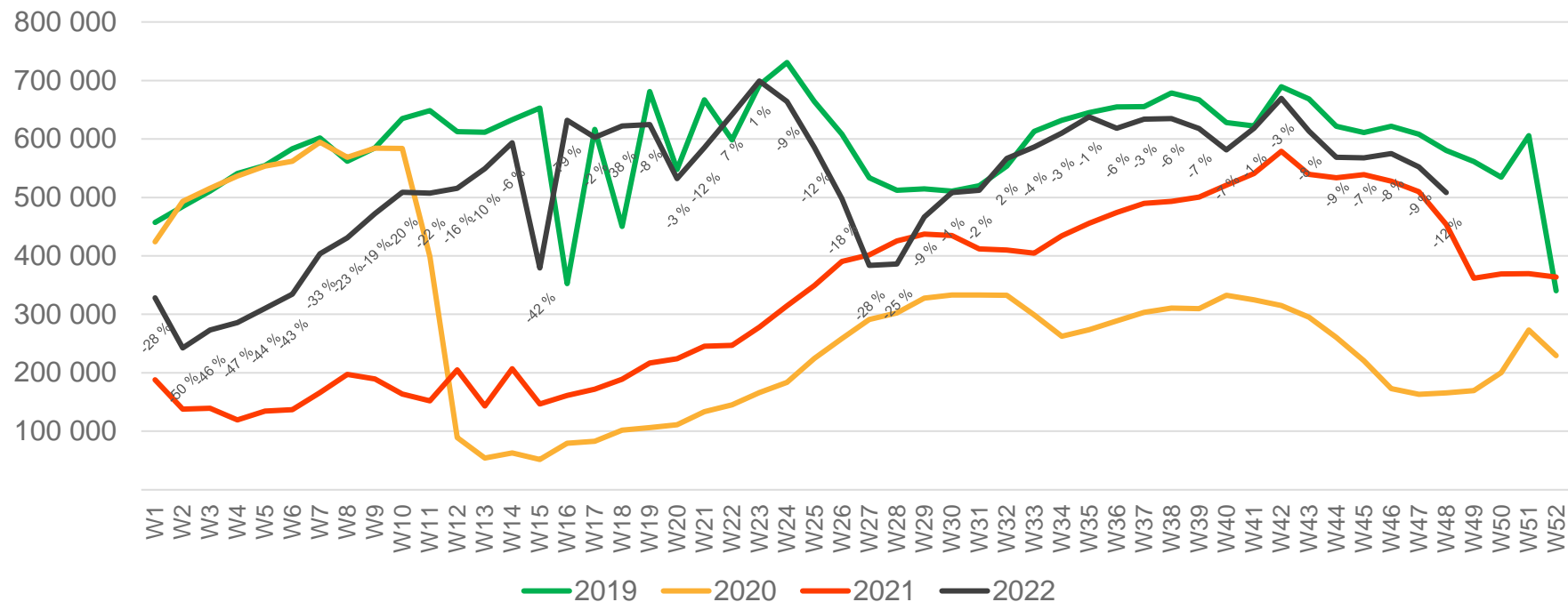
\* Week 1 2019 is 31/12-18 – 6/1-19. Week 1 2020 is 30/12-19 – 5/1-20. Week 52 2021 is 27/12-21 – 2/1-22.

# Passengers Avinor international per week



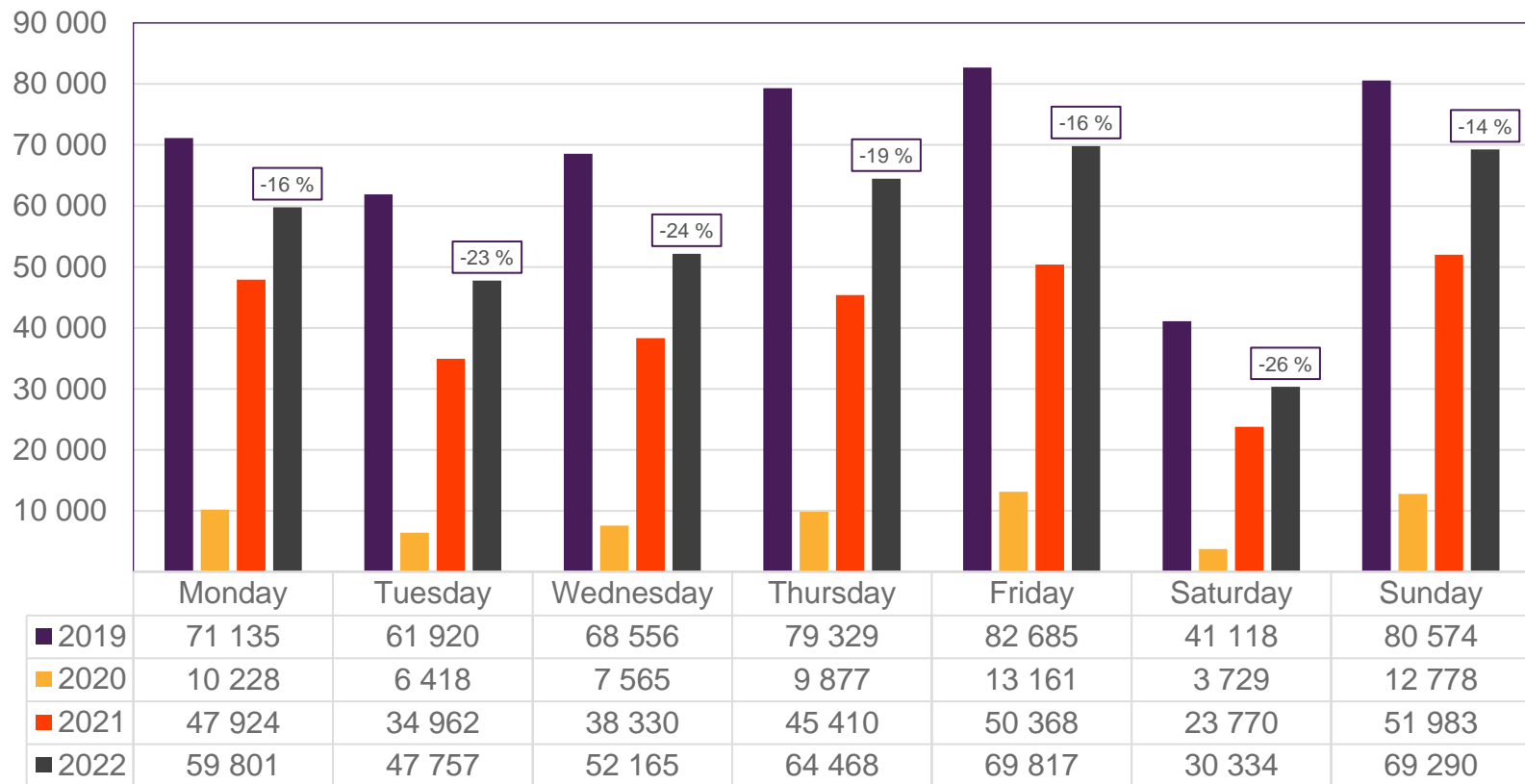
\* Week 1 2019 is 31/12-18 – 6/1-19. Week 1 2020 is 30/12-19 – 5/1-20. Week 52 2021 is 27/12-21 – 2/1-22.

# Passengers Avinor domestic per week



\* Week 1 2019 is 31/12-18 – 6/1-19. Week 1 2020 is 30/12-19 – 5/1-20. Week 52 2021 is 27/12-21 – 2/1-22.

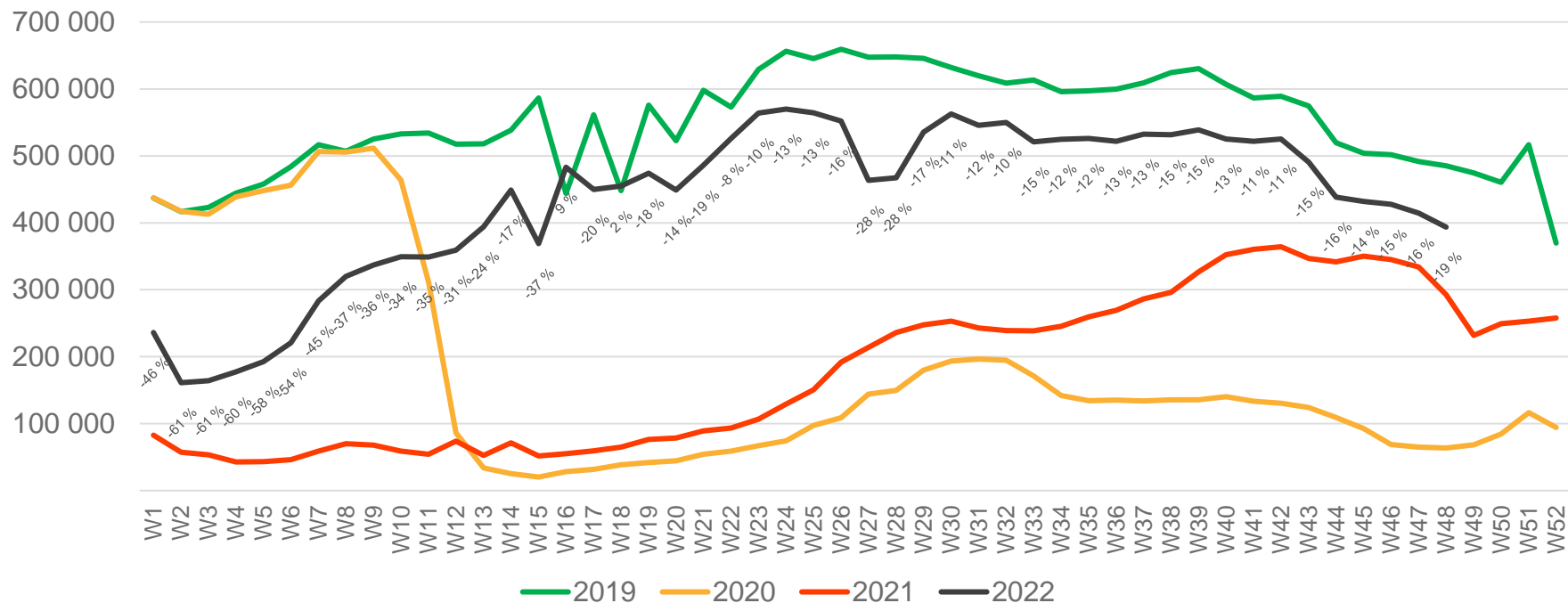
# Passengers OSL total per day, week 48



The deviation is measured towards 2019.

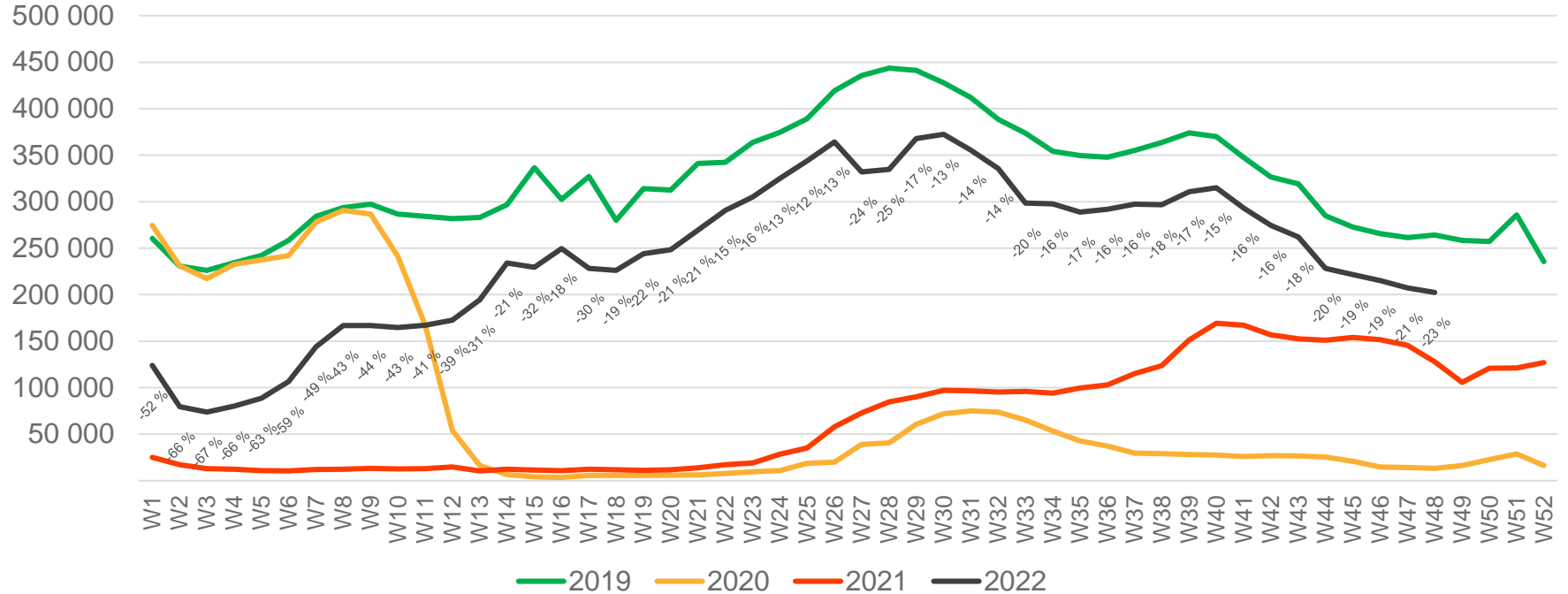


# Passengers OSL total per week



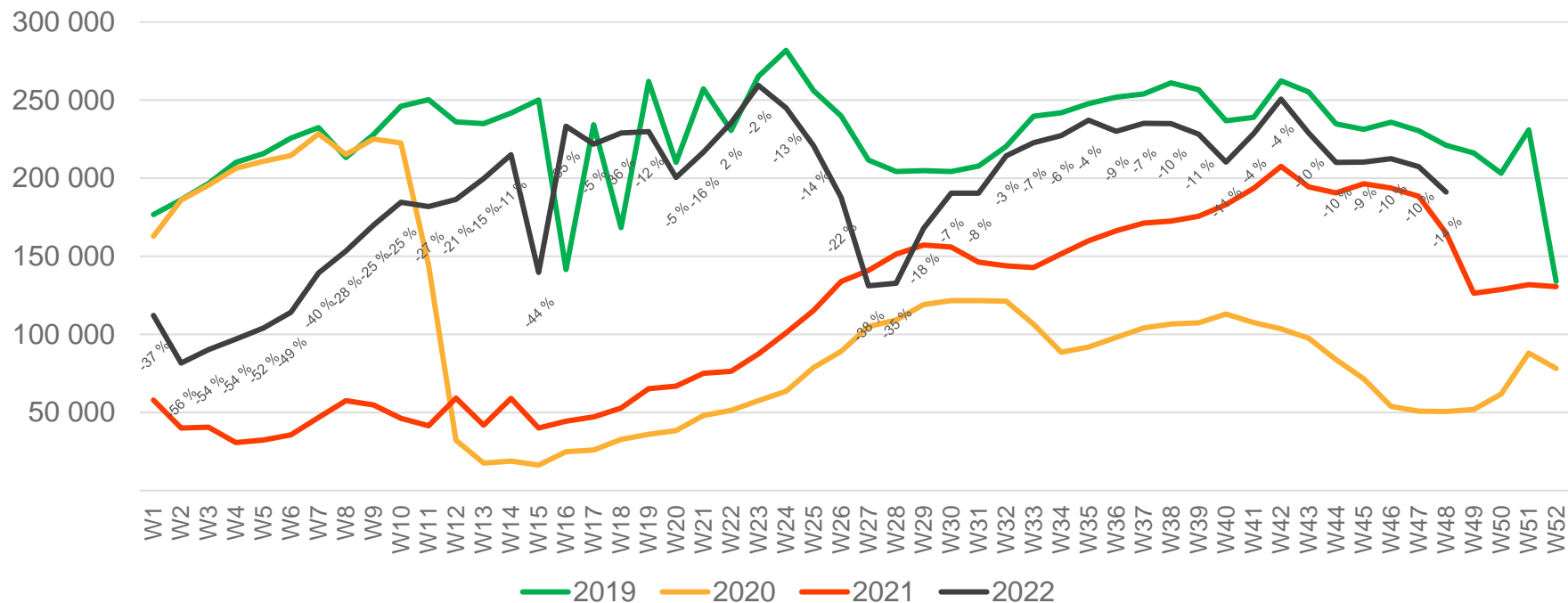
\* Week 1 2019 is 31/12-18 – 6/1-19. Week 1 2020 is 30/12-19 – 5/1-20. Week 52 2021 is 27/12-21 – 2/1-22.

# Passengers OSL international per week



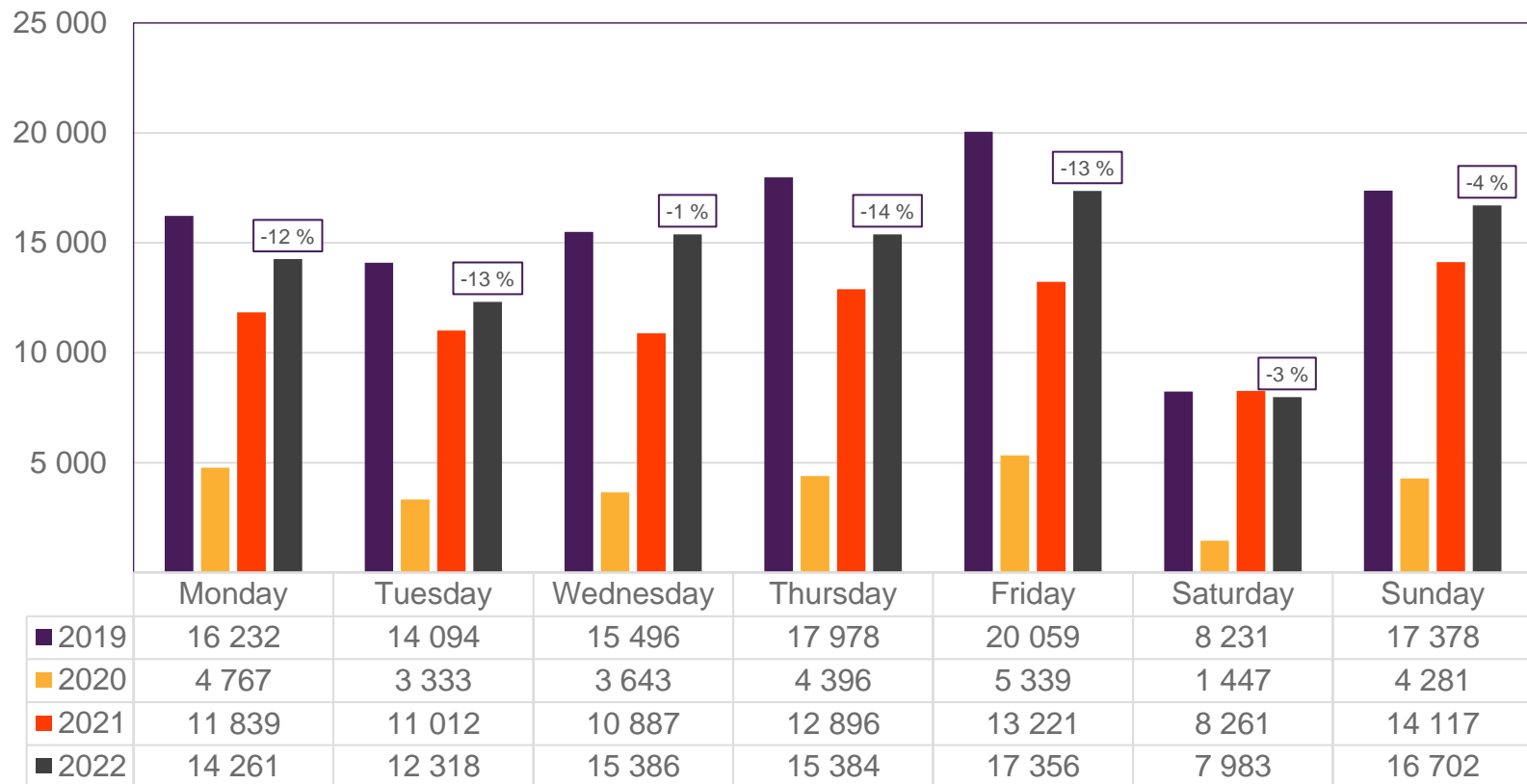
\* Week 1 2019 is 31/12-18 – 6/1-19. Week 1 2020 is 30/12-19 – 5/1-20. Week 52 2021 is 27/12-21 – 2/1-22.

# Passengers OSL domestic per week



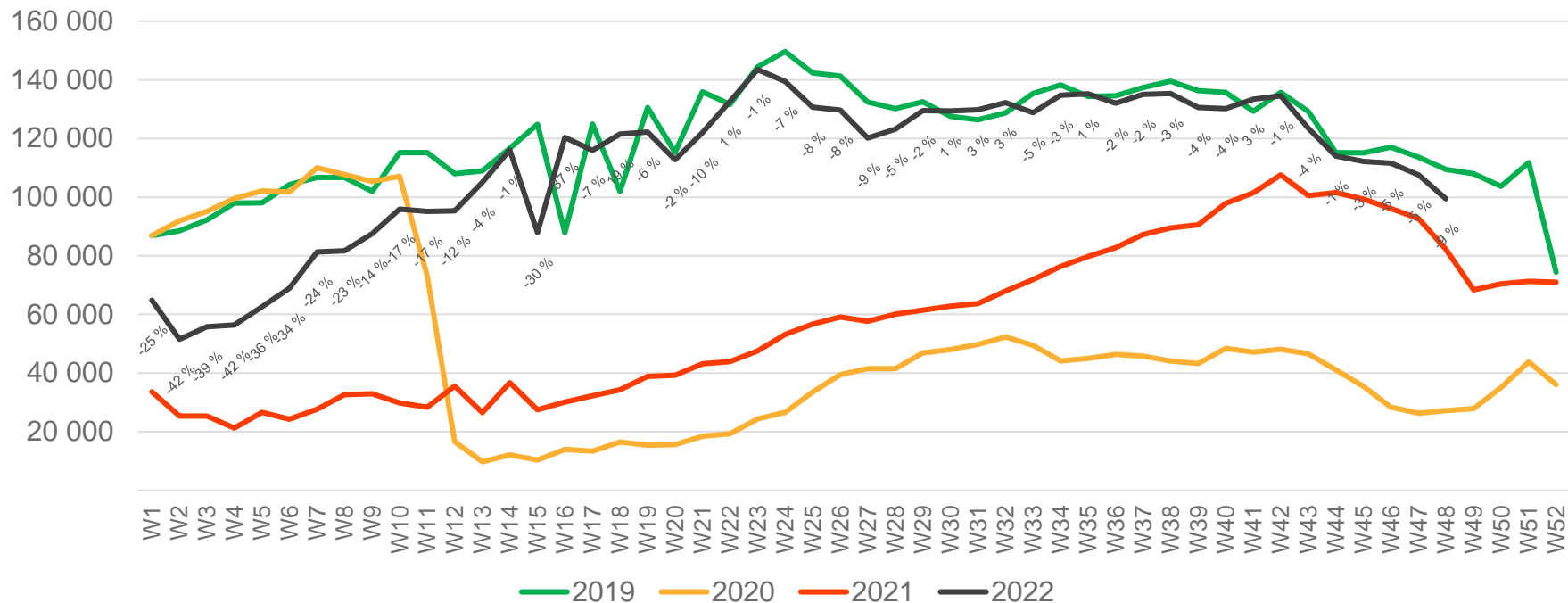
\* Week 1 2019 is 31/12-18 – 6/1-19. Week 1 2020 is 30/12-19 – 5/1-20. Week 52 2021 is 27/12-21 – 2/1-22.

# Passengers BGO total per day, week 48



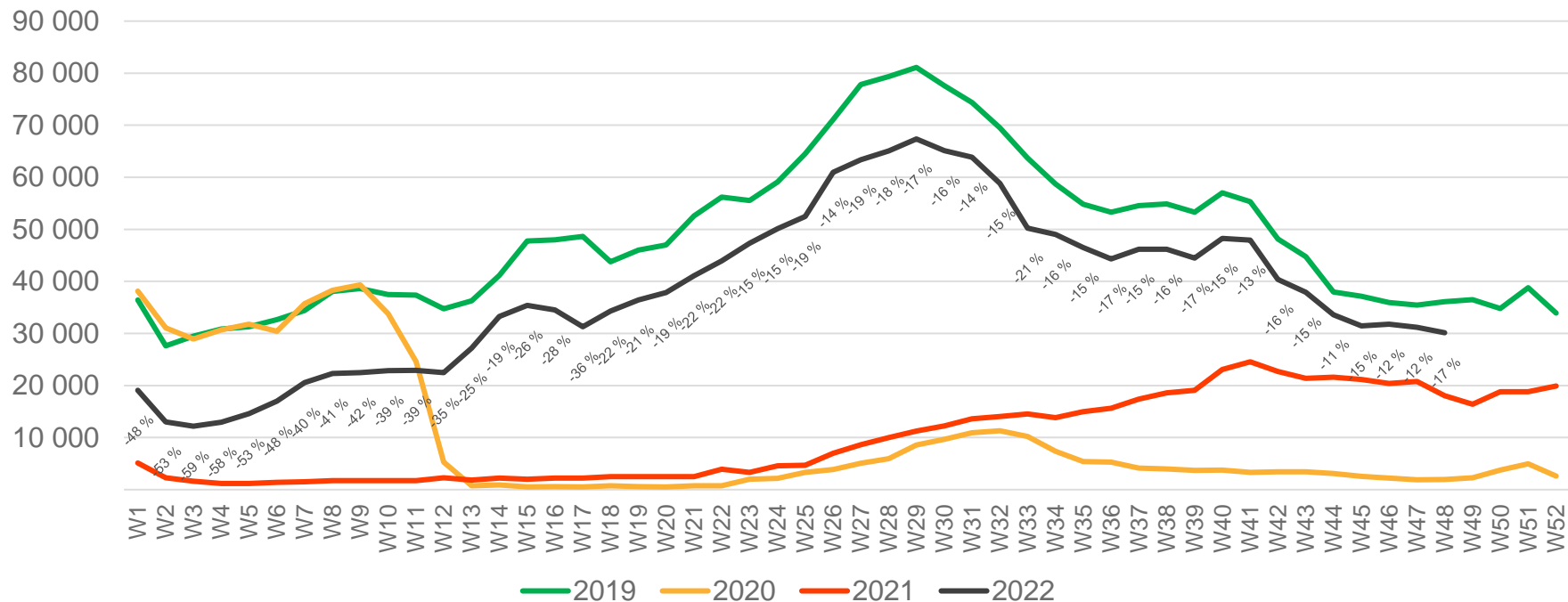
The deviation is measured towards 2019.

# Passengers BGO total per week



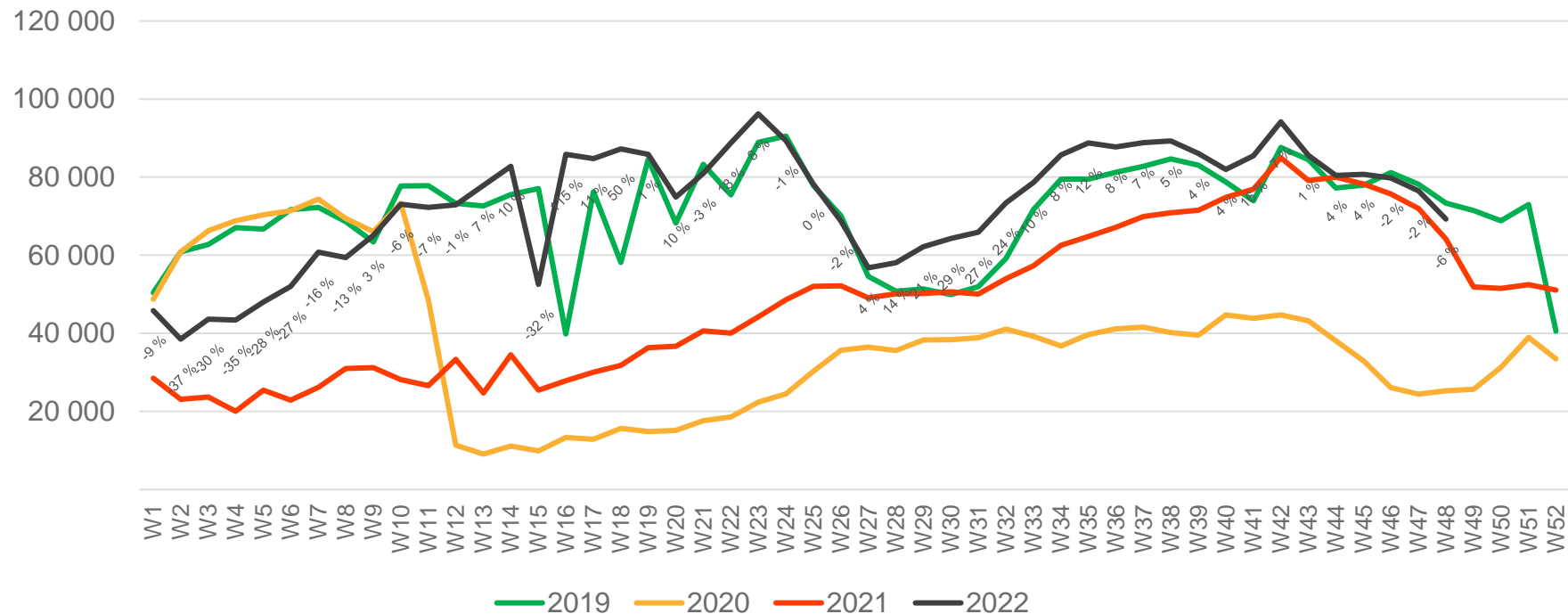
\* Week 1 2019 is 31/12-18 – 6/1-19. Week 1 2020 is 30/12-19 – 5/1-20. Week 52 2021 is 27/12-21 – 2/1-22.

# Passengers BGO international per week



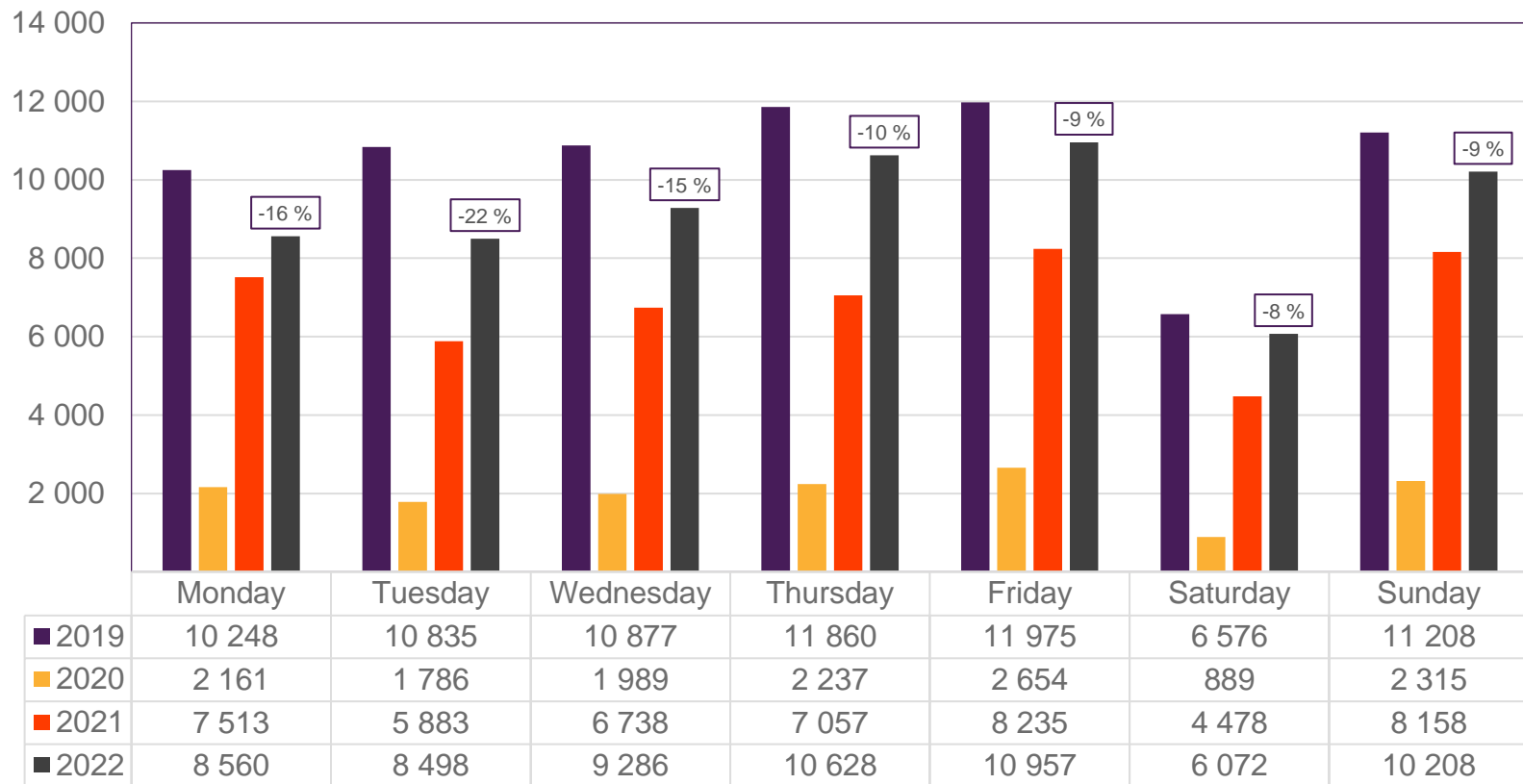
\* Week 1 2019 is 31/12-18 – 6/1-19. Week 1 2020 is 30/12-19 – 5/1-20. Week 52 2021 is 27/12-21 – 2/1-22.

# Passengers BGO domestic per week



\* Week 1 2019 is 31/12-18 – 6/1-19. Week 1 2020 is 30/12-19 – 5/1-20. Week 52 2021 is 27/12-21 – 2/1-22.

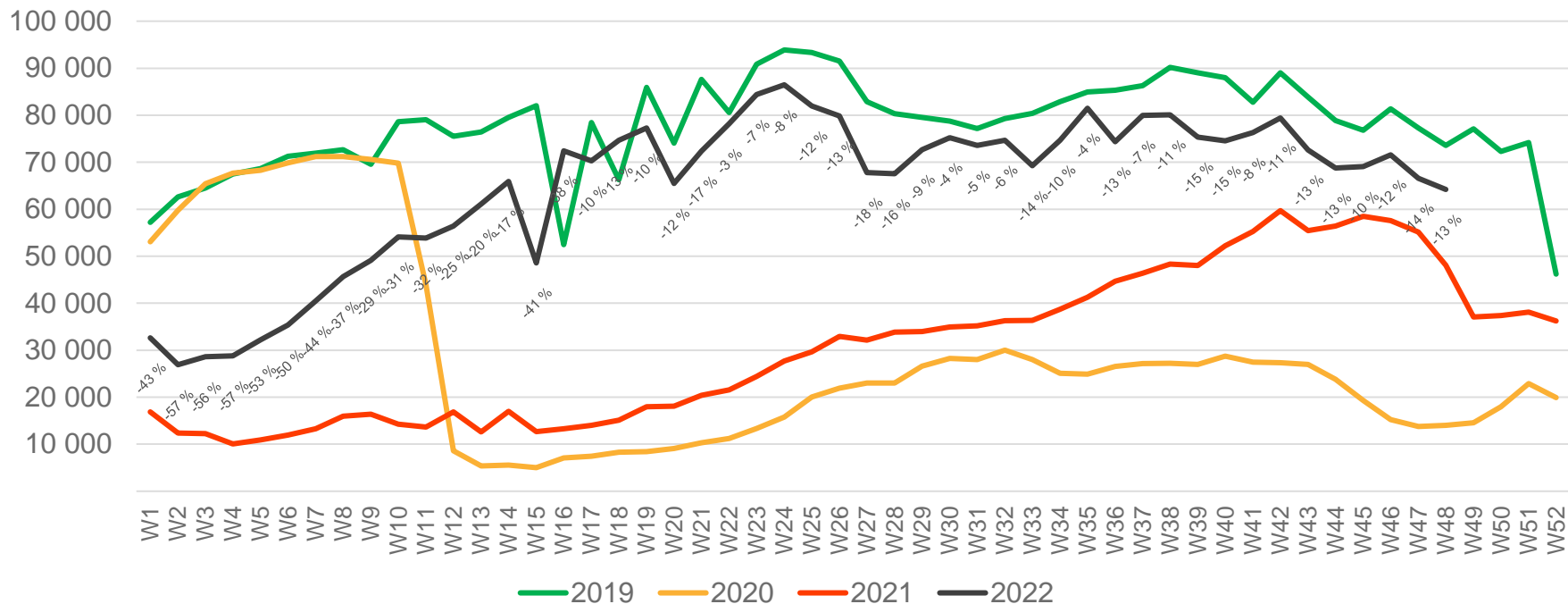
# Passengers SVG total per day, week 48



The deviation is measured towards 2019.

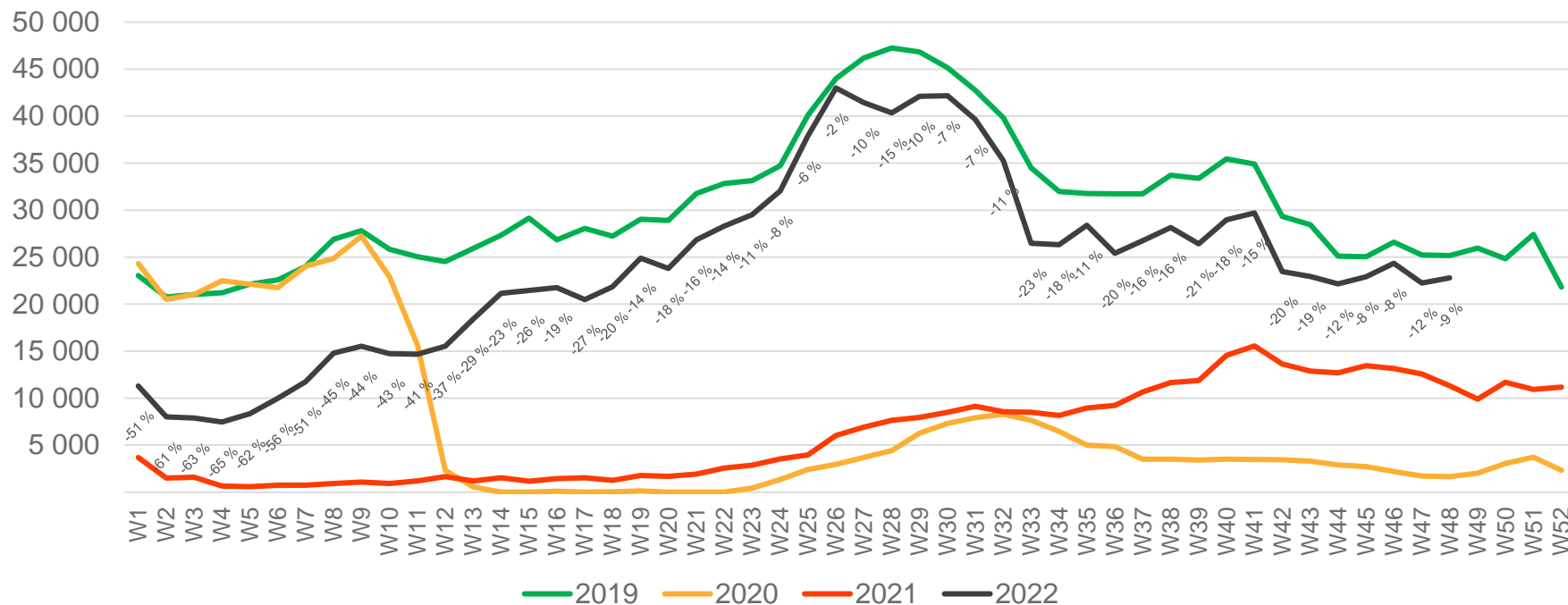


# Passengers SVG total per week



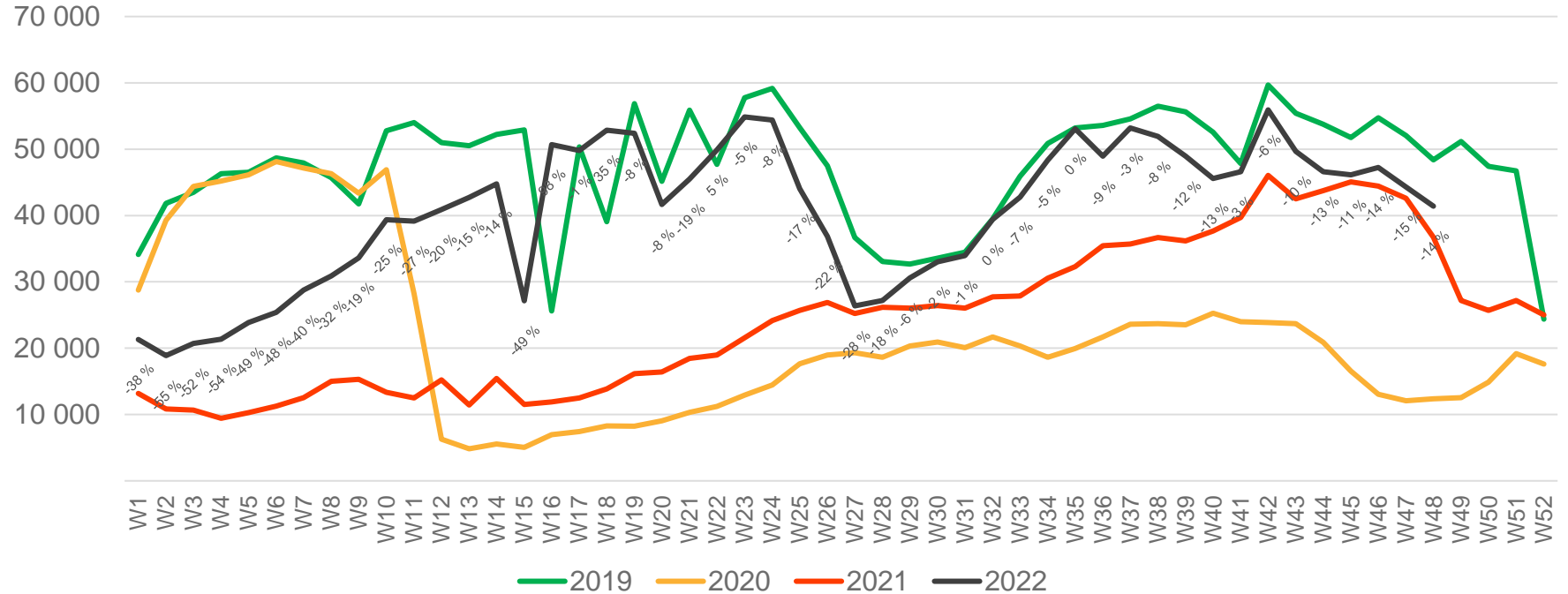
\* Week 1 2019 is 31/12-18 – 6/1-19. Week 1 2020 is 30/12-19 – 5/1-20. Week 52 2021 is 27/12-21 – 2/1-22.

# Passengers SVG international per week



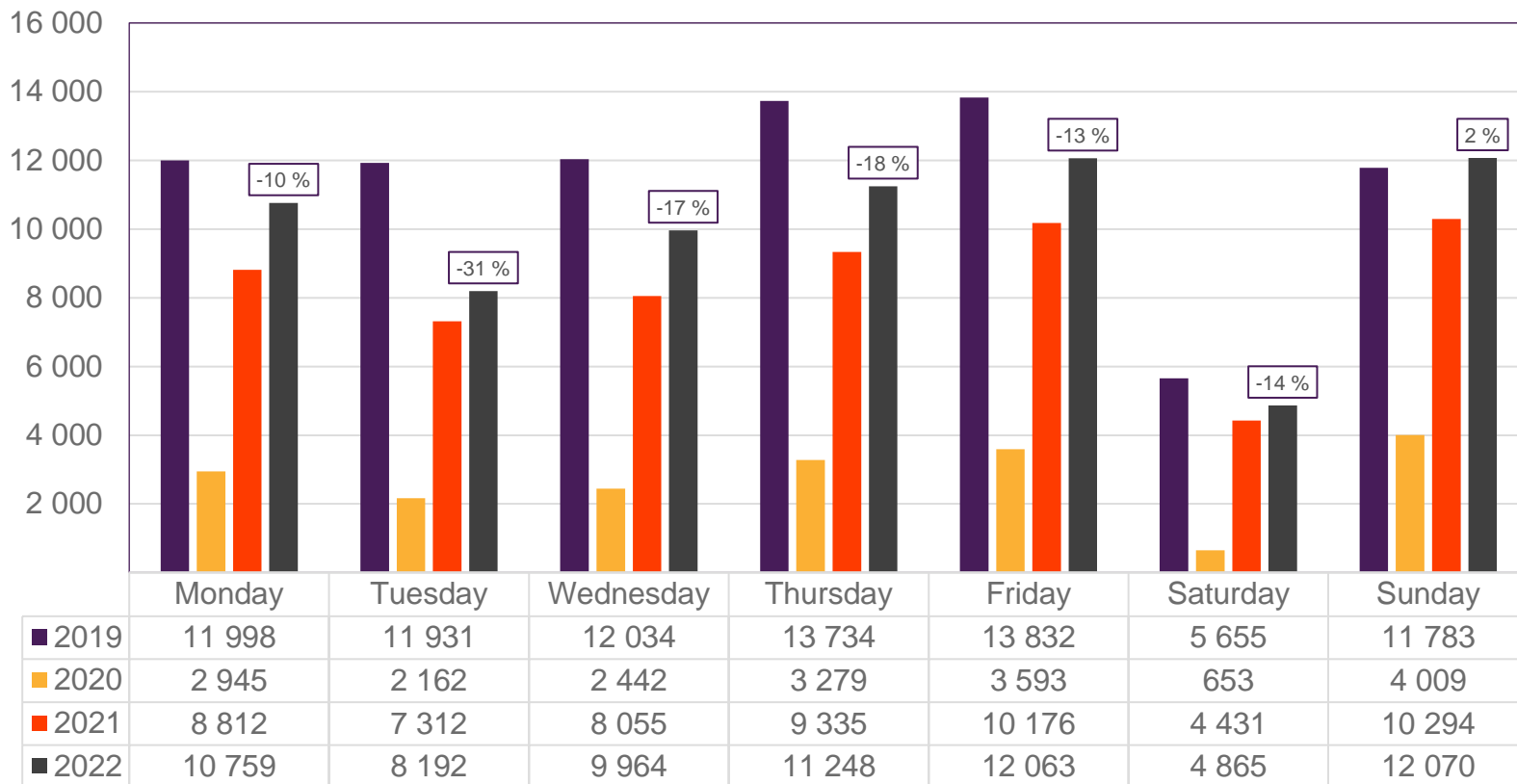
\* Week 1 2019 is 31/12-18 – 6/1-19. Week 1 2020 is 30/12-19 – 5/1-20. Week 52 2021 is 27/12-21 – 2/1-22.

# Passengers SVG domestic per week



\* Week 1 2019 is 31/12-18 – 6/1-19. Week 1 2020 is 30/12-19 – 5/1-20. Week 52 2021 is 27/12-21 – 2/1-22.

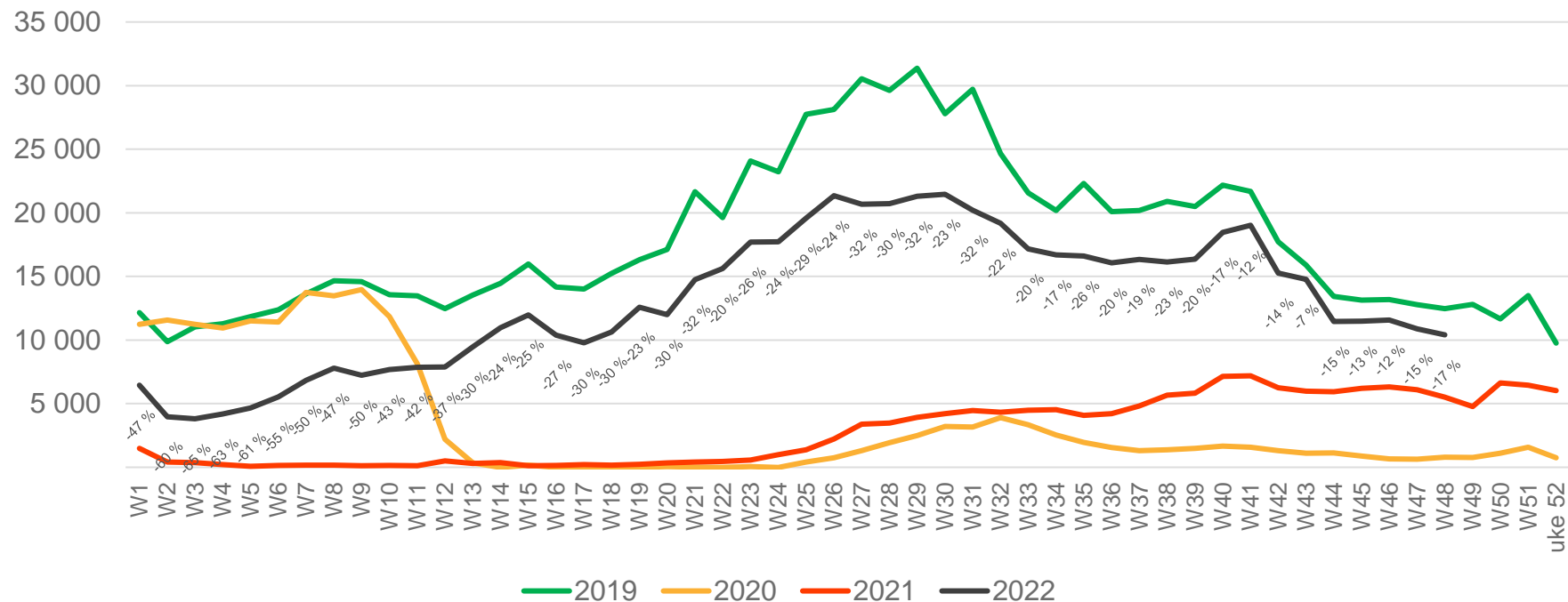
# Passengers TRD total per day, week 48



The deviation is measured towards 2019.

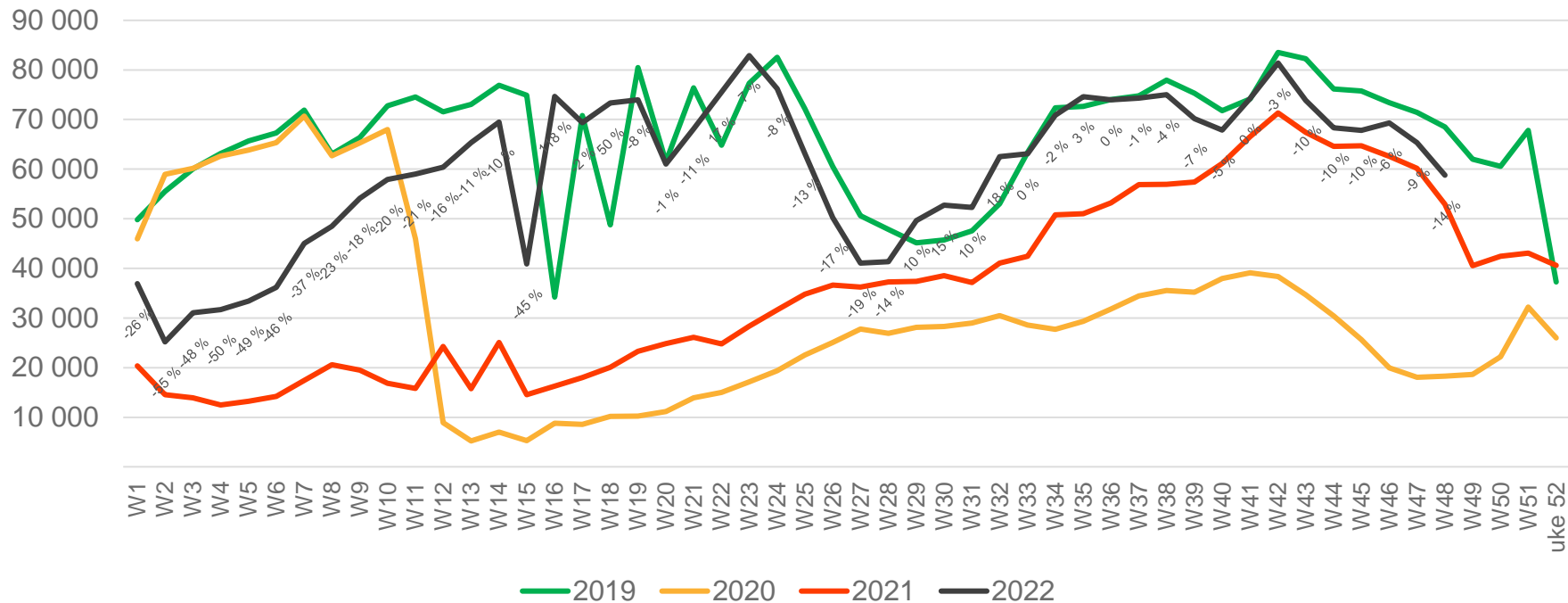


# Passengers TRD international per week



\* Week 1 2019 is 31/12-18 – 6/1-19. Week 1 2020 is 30/12-19 – 5/1-20. Week 52 2021 is 27/12-21 – 2/1-22.

# Passengers TRD domestic per week



\* Week 1 2019 is 31/12-18 – 6/1-19. Week 1 2020 is 30/12-19 – 5/1-20. Week 52 2021 is 27/12-21 – 2/1-22.