



Passenger numbers per week

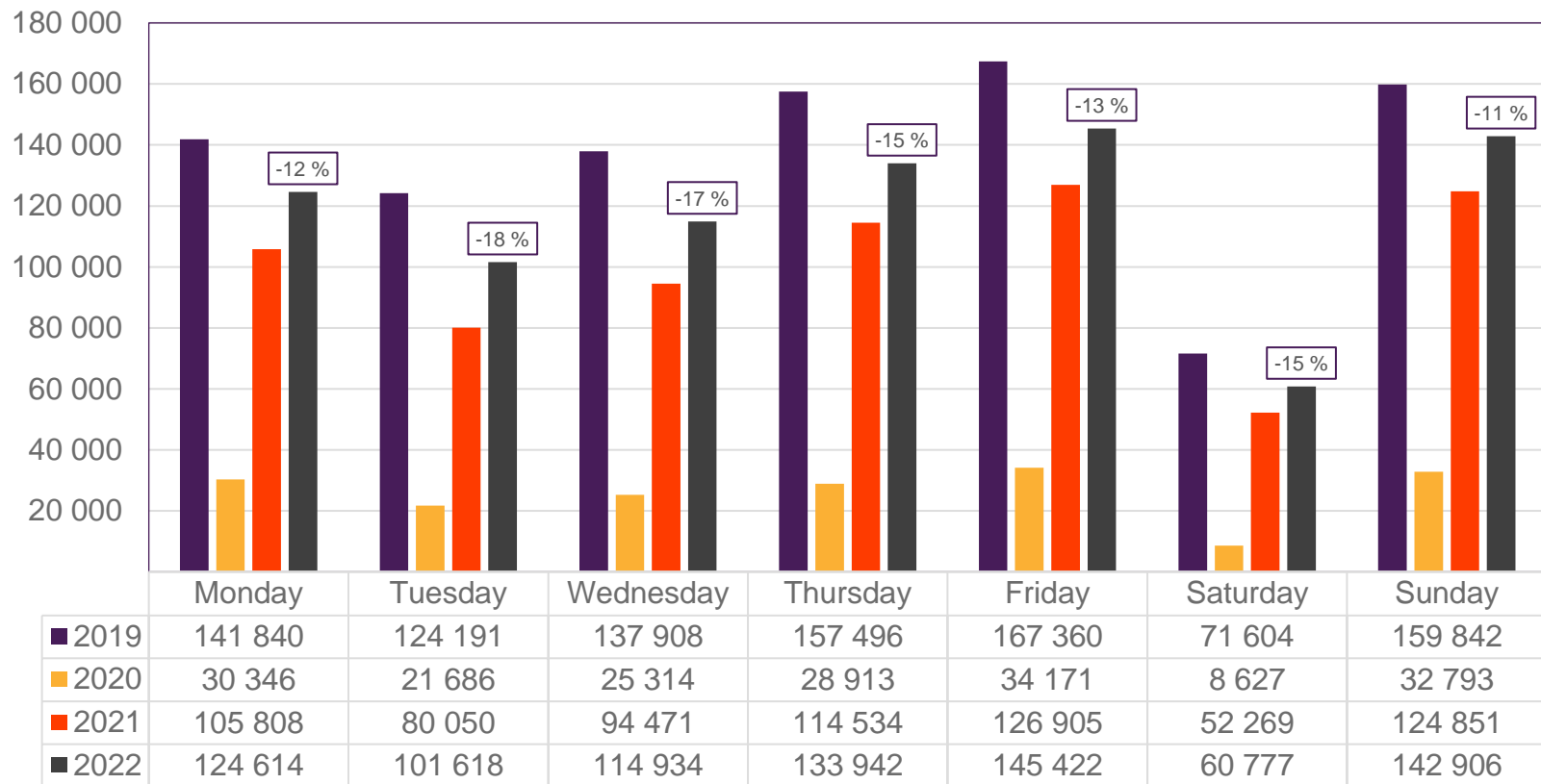
## Preliminary figures

- The figures for the previous week are preliminary. It takes some time for all passenger numbers to be reported, so the figures for the previous week may be 1-2% lower than the final figures.
- The figures are taken from Avinor's traffic database.
- Week 1 2019 include numbers from 2018 (31/12 2018)  
Week 1 2020 include numbers from 2019 (30-31/12 2019)  
Week 52 2021 include numbers from 2022 (1-2/1 2022)

# Top 10 airports, total week 47

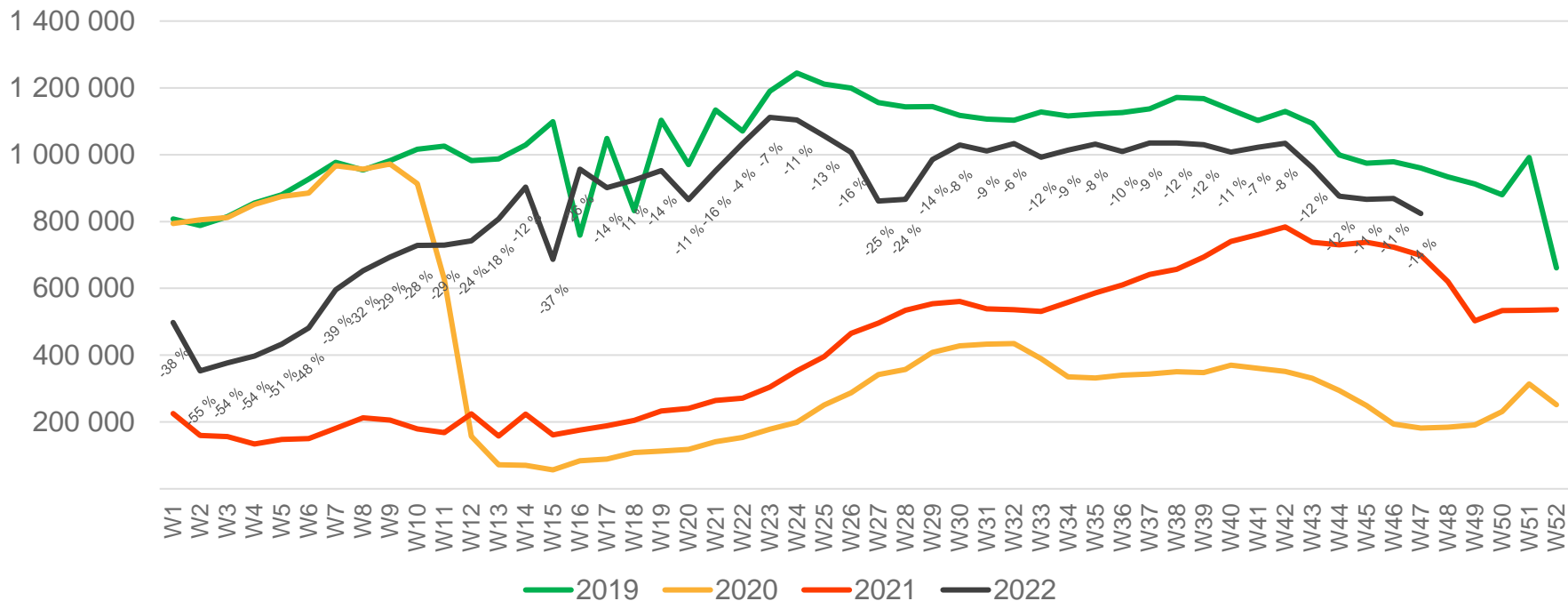
Airport	2019	2020	2021	2022	2022 vs. 2019		2022 vs. 2021	
					Change	Change %	Change	Change %
Oslo/Gardermoen	491 789	64 725	334 097	410 277	-81 512	-17 %	76 180	23 %
Bergen/Flesland	113 637	26 301	92 684	105 893	-7 744	-7 %	13 209	14 %
Trondheim/Værnes	84 218	18 703	66 274	75 661	-8 557	-10 %	9 387	14 %
Stavanger/Sola	77 285	13 794	55 169	65 592	-11 693	-15 %	10 423	19 %
Tromsø/Langnes	45 314	15 106	36 761	41 881	-3 433	-8 %	5 120	14 %
Bodø	32 177	9 895	26 105	28 701	-3 476	-11 %	2 596	10 %
Ålesund/Vigra	20 873	4 134	15 451	17 343	-3 530	-17 %	1 892	12 %
Kristiansand/Kjevik	21 205	3 404	12 767	13 798	-7 407	-35 %	1 031	8 %
Harstad/Narvik/Evenes	12 112	3 644	11 365	11 783	-329	-3 %	418	4 %
Bardufoss	4 420	1 100	2 678	3 747	-673	-15 %	1 069	40 %

# Passengers Avinor total per day, week 47



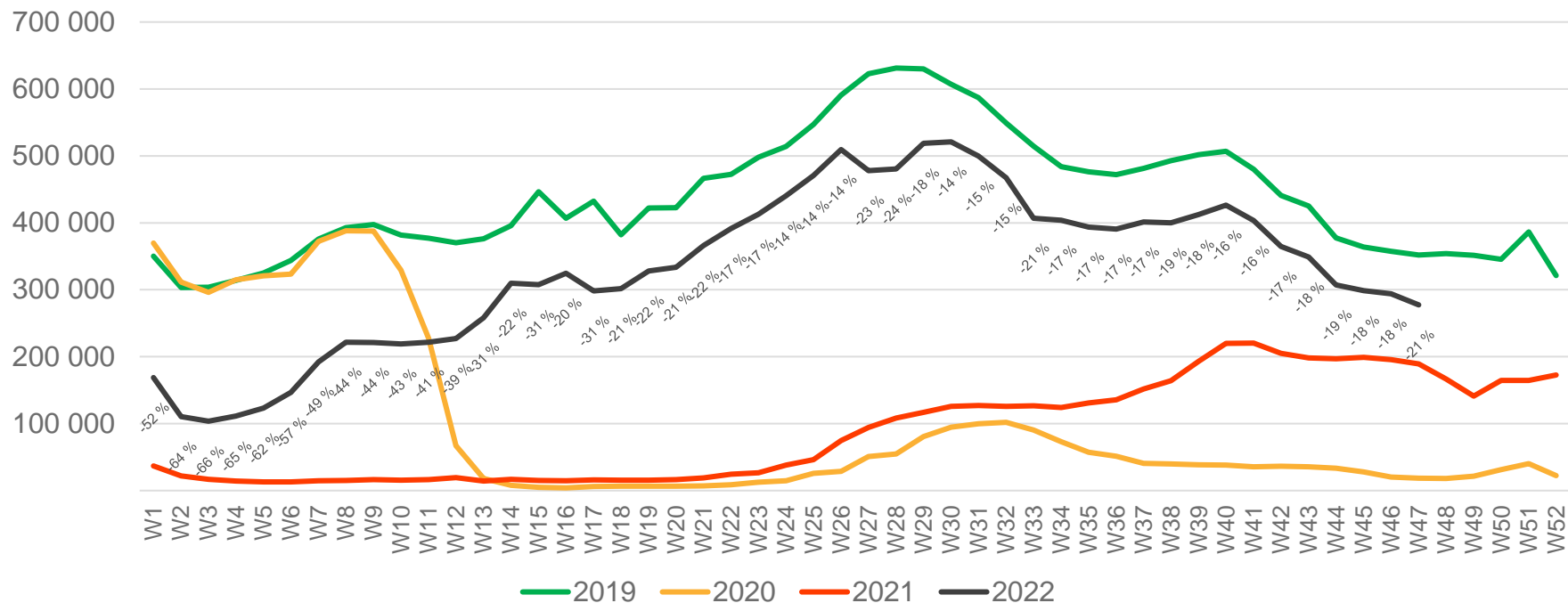
The deviation is measured towards 2019.

# Passengers Avinor total per week



\* Week 1 2019 is 31/12-18 – 6/1-19. Week 1 2020 is 30/12-19 – 5/1-20. Week 52 2021 is 27/12-21 – 2/1-22.

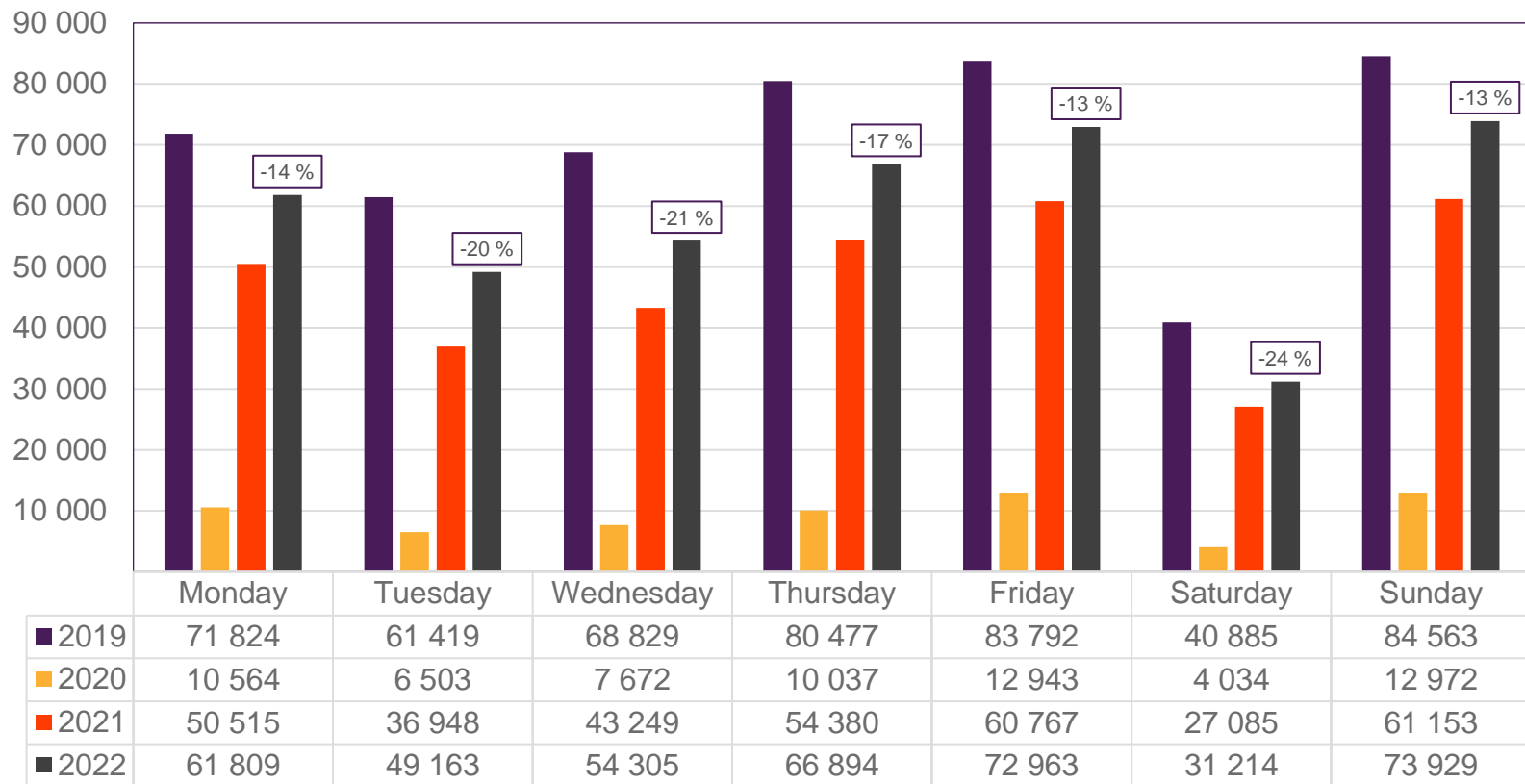
# Passengers Avinor international per week



\* Week 1 2019 is 31/12-18 – 6/1-19. Week 1 2020 is 30/12-19 – 5/1-20. Week 52 2021 is 27/12-21 – 2/1-22.



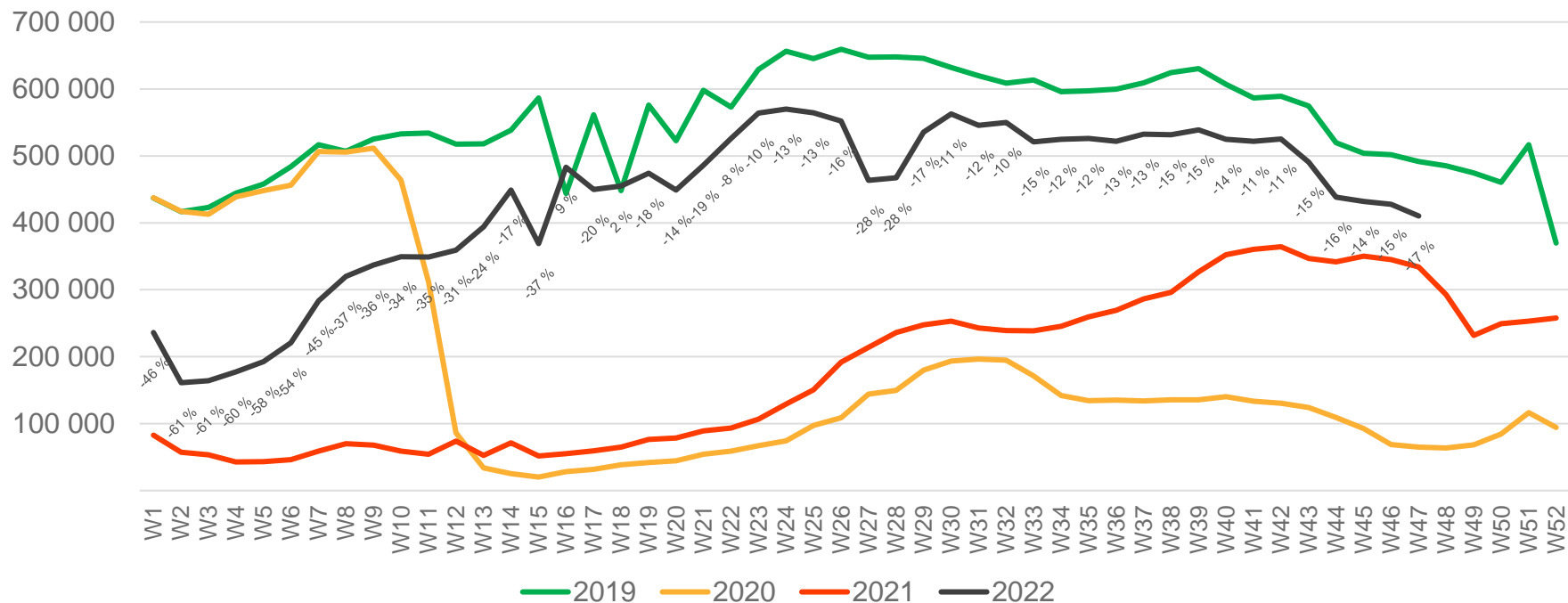
# Passengers OSL total per day, week 47



The deviation is measured towards 2019.

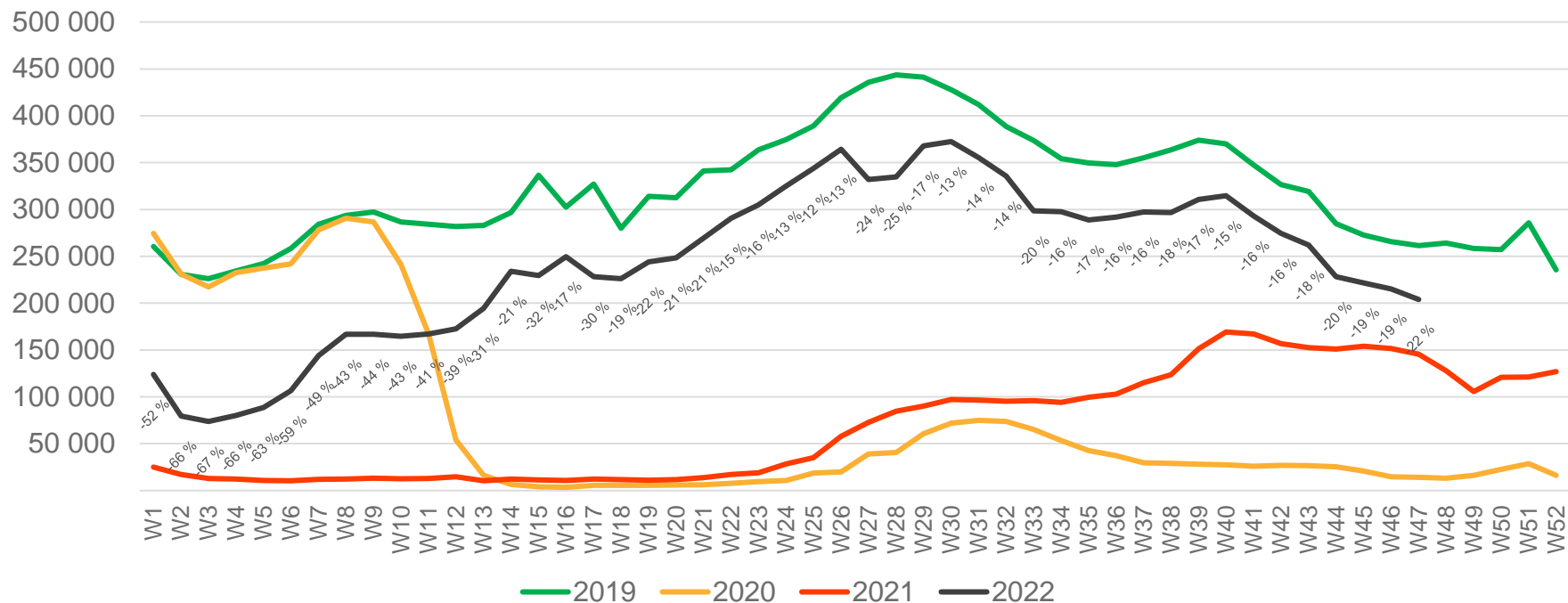


# Passengers OSL total per week



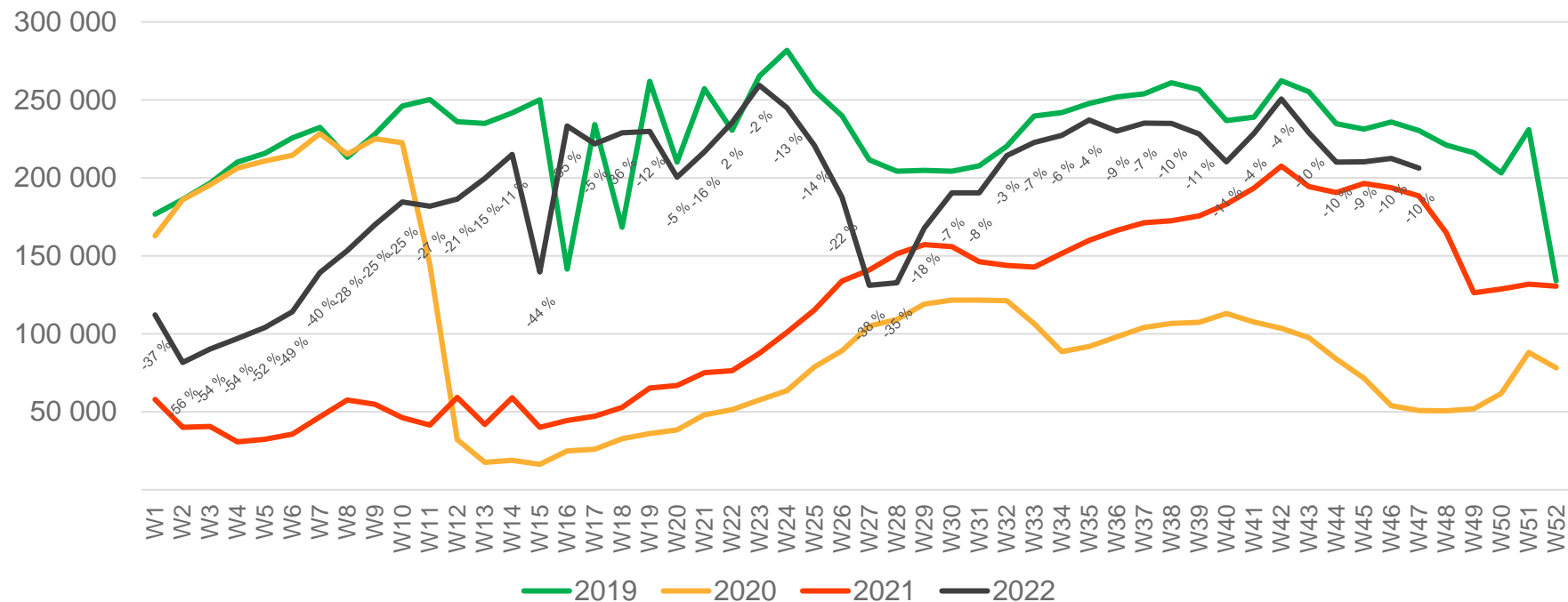
\* Week 1 2019 is 31/12-18 – 6/1-19. Week 1 2020 is 30/12-19 – 5/1-20. Week 52 2021 is 27/12-21 – 2/1-22.

# Passengers OSL international per week



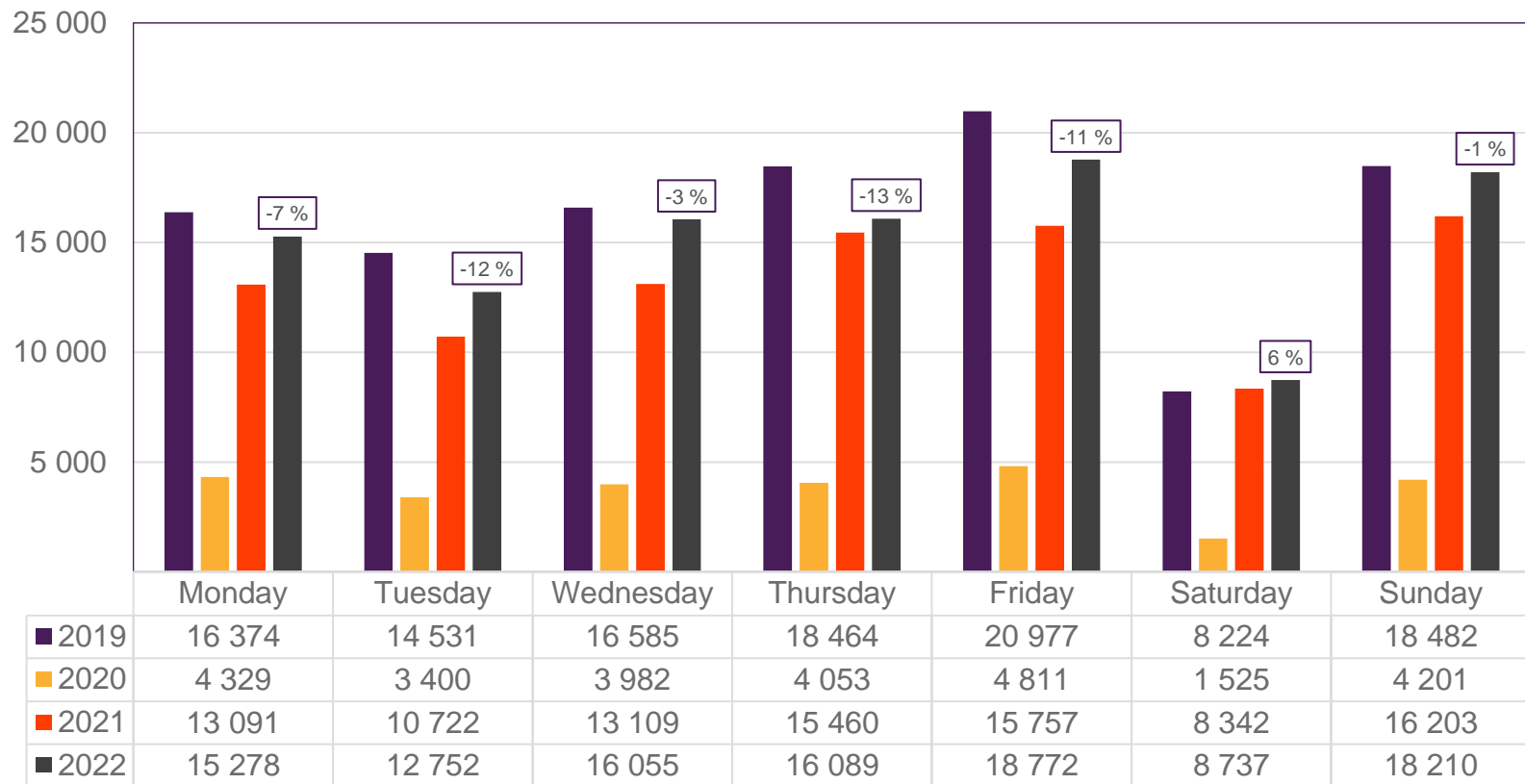
\* Week 1 2019 is 31/12-18 – 6/1-19. Week 1 2020 is 30/12-19 – 5/1-20. Week 52 2021 is 27/12-21 – 2/1-22.

# Passengers OSL domestic per week



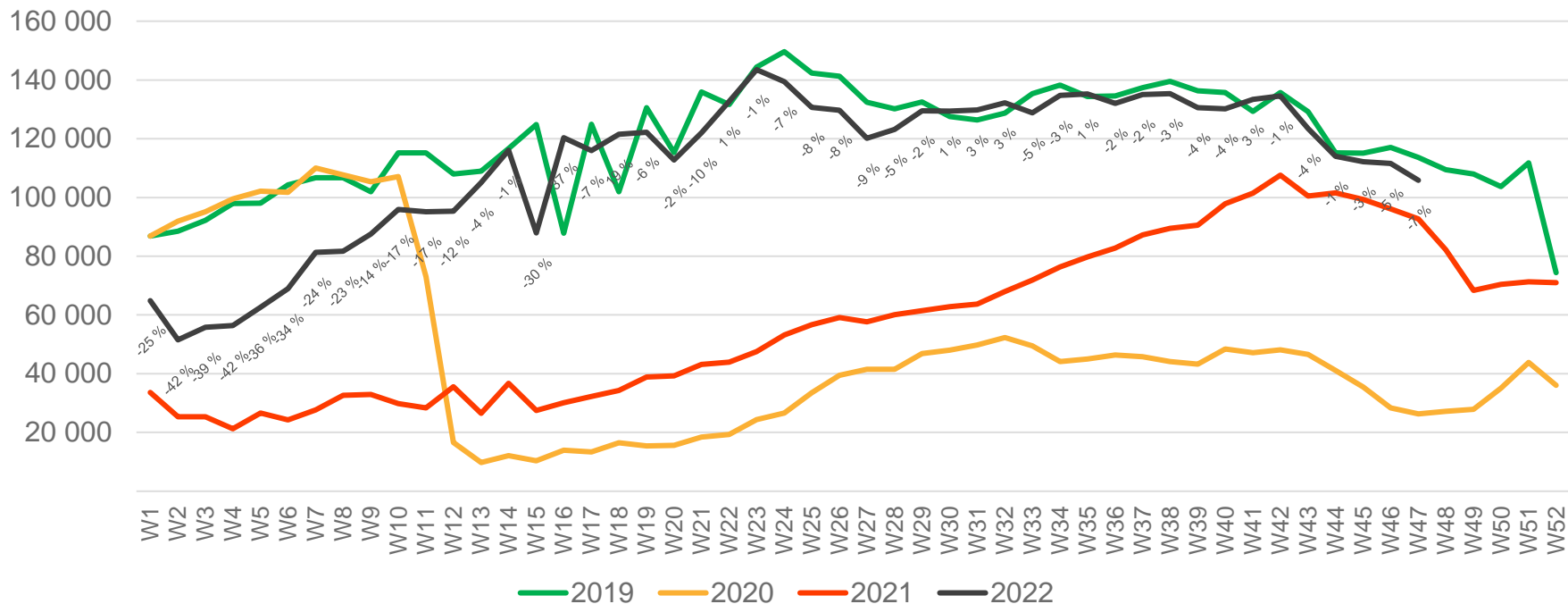
\* Week 1 2019 is 31/12-18 – 6/1-19. Week 1 2020 is 30/12-19 – 5/1-20. Week 52 2021 is 27/12-21 – 2/1-22.

# Passengers BGO total per day, week 47



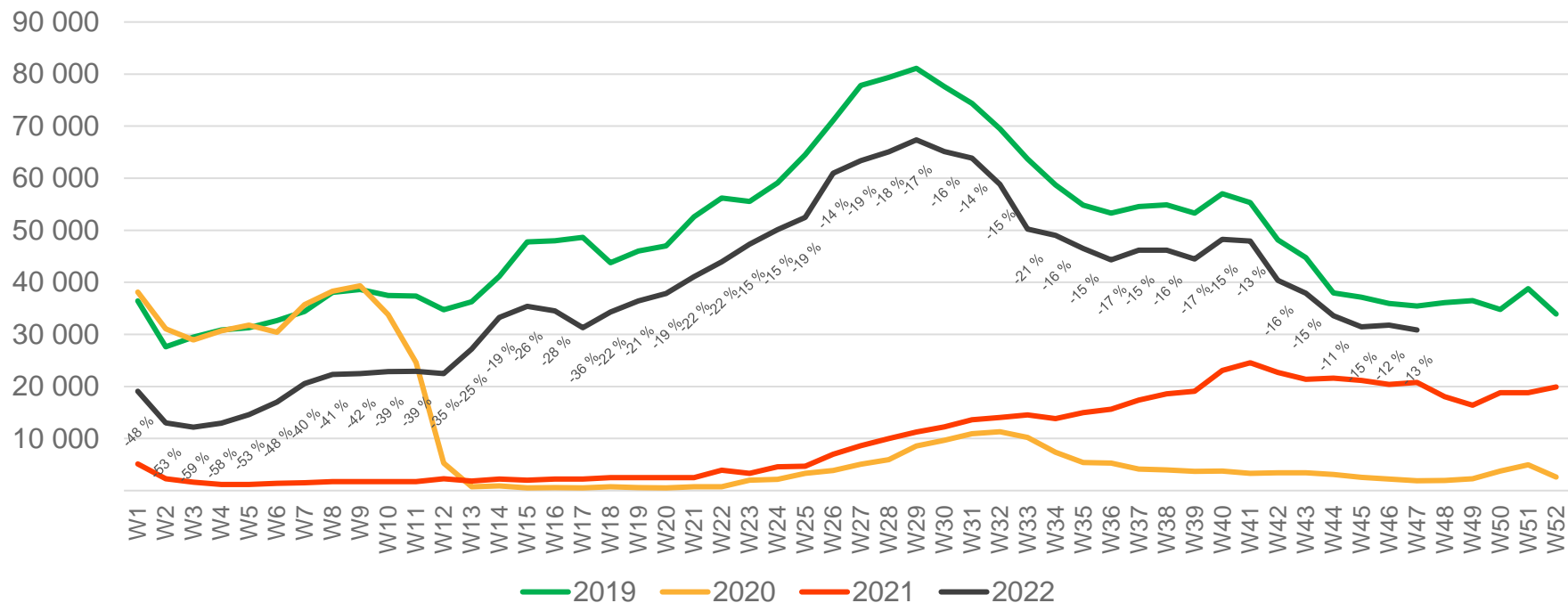
The deviation is measured towards 2019.

# Passengers BGO total per week



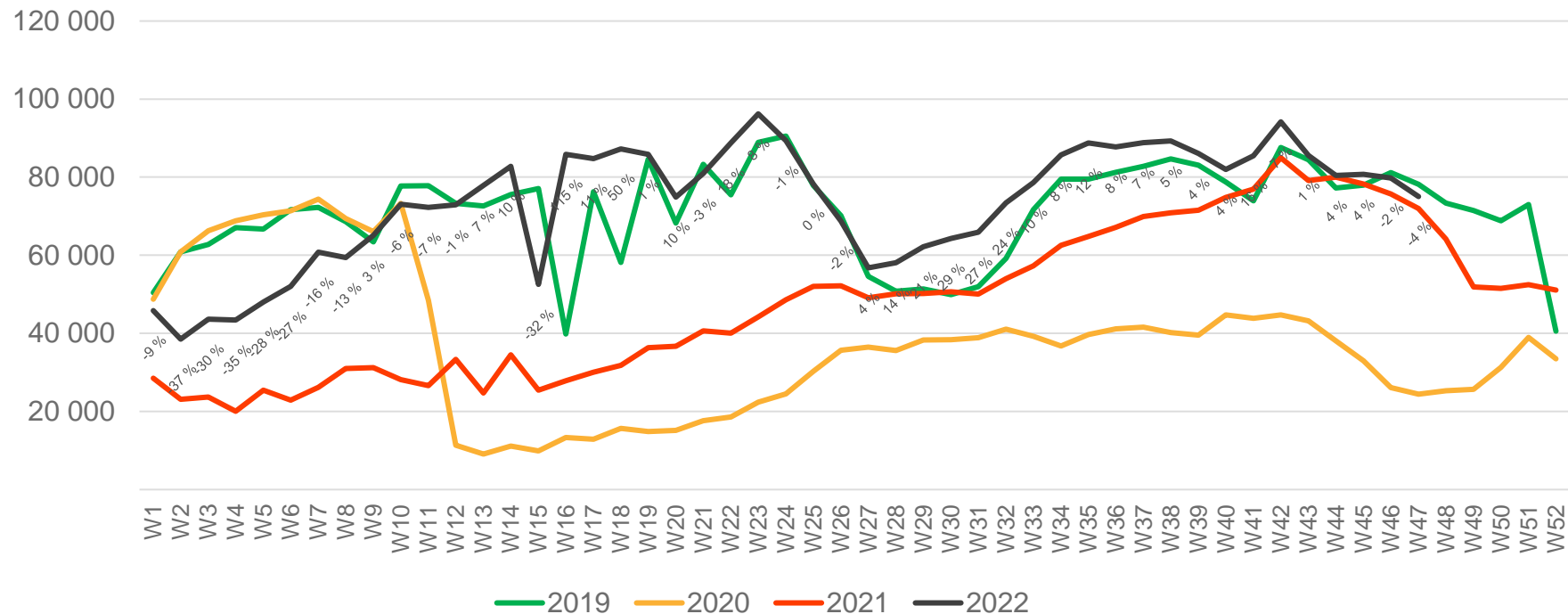
\* Week 1 2019 is 31/12-18 – 6/1-19. Week 1 2020 is 30/12-19 – 5/1-20. Week 52 2021 is 27/12-21 – 2/1-22.

# Passengers BGO international per week



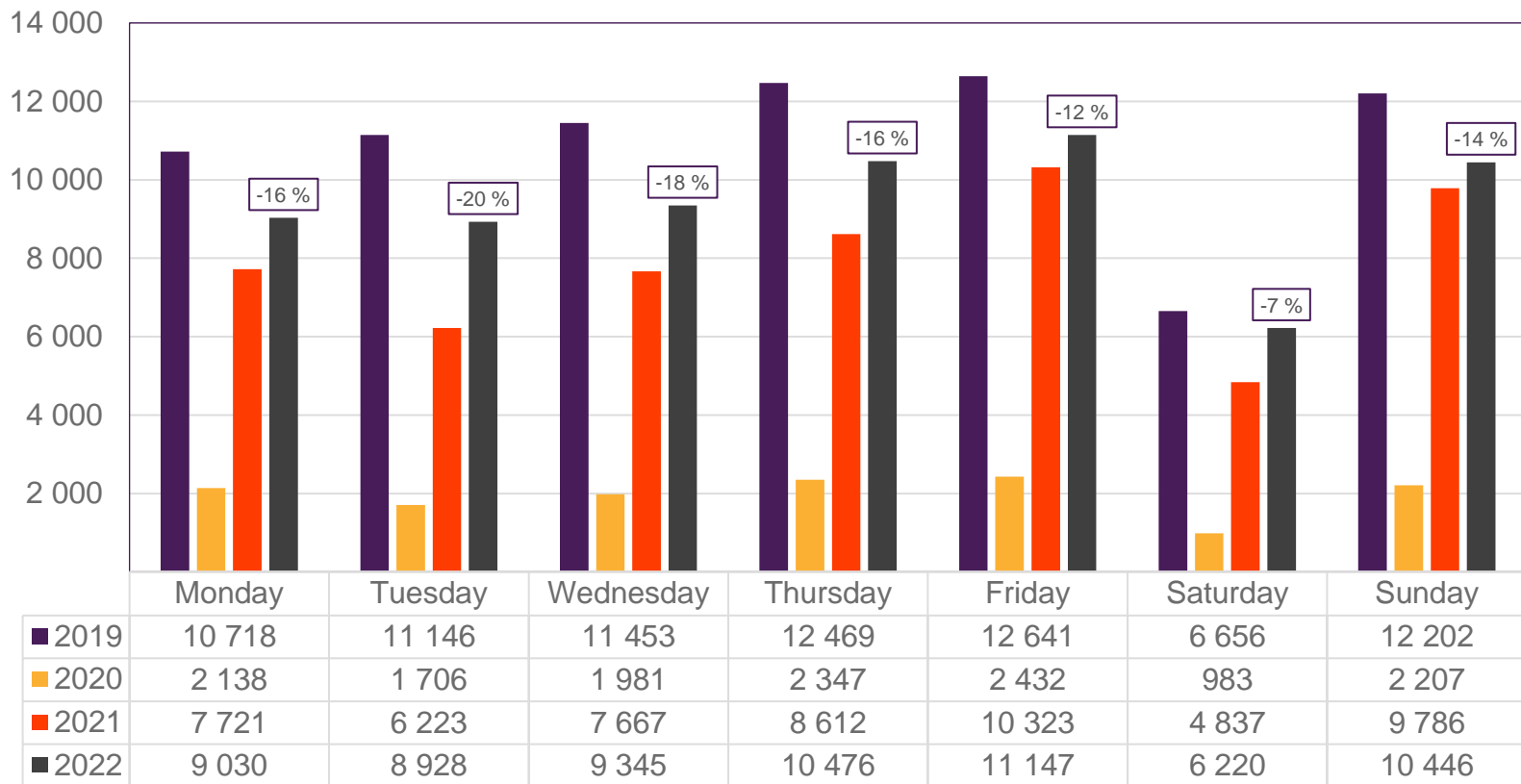
\* Week 1 2019 is 31/12-18 – 6/1-19. Week 1 2020 is 30/12-19 – 5/1-20. Week 52 2021 is 27/12-21 – 2/1-22.

# Passengers BGO domestic per week



\* Week 1 2019 is 31/12-18 – 6/1-19. Week 1 2020 is 30/12-19 – 5/1-20. Week 52 2021 is 27/12-21 – 2/1-22.

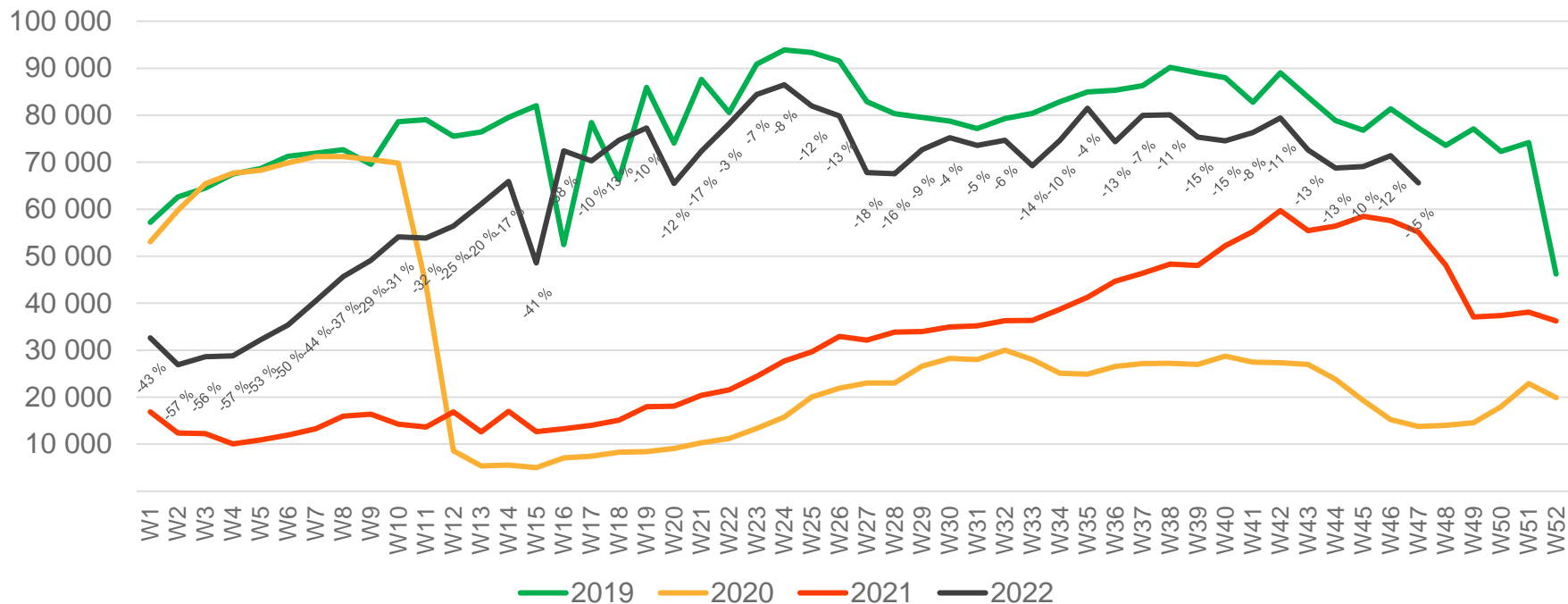
# Passengers SVG total per day, week 47



The deviation is measured towards 2019.

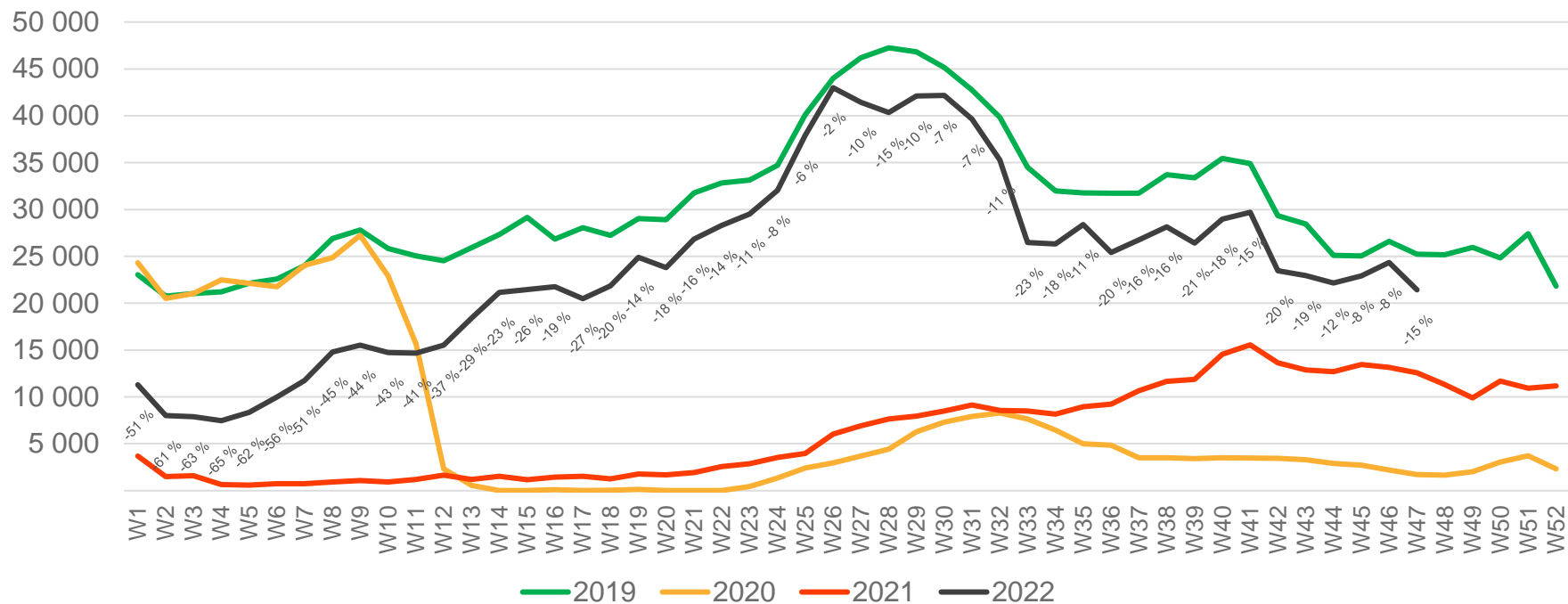


# Passengers SVG total per week



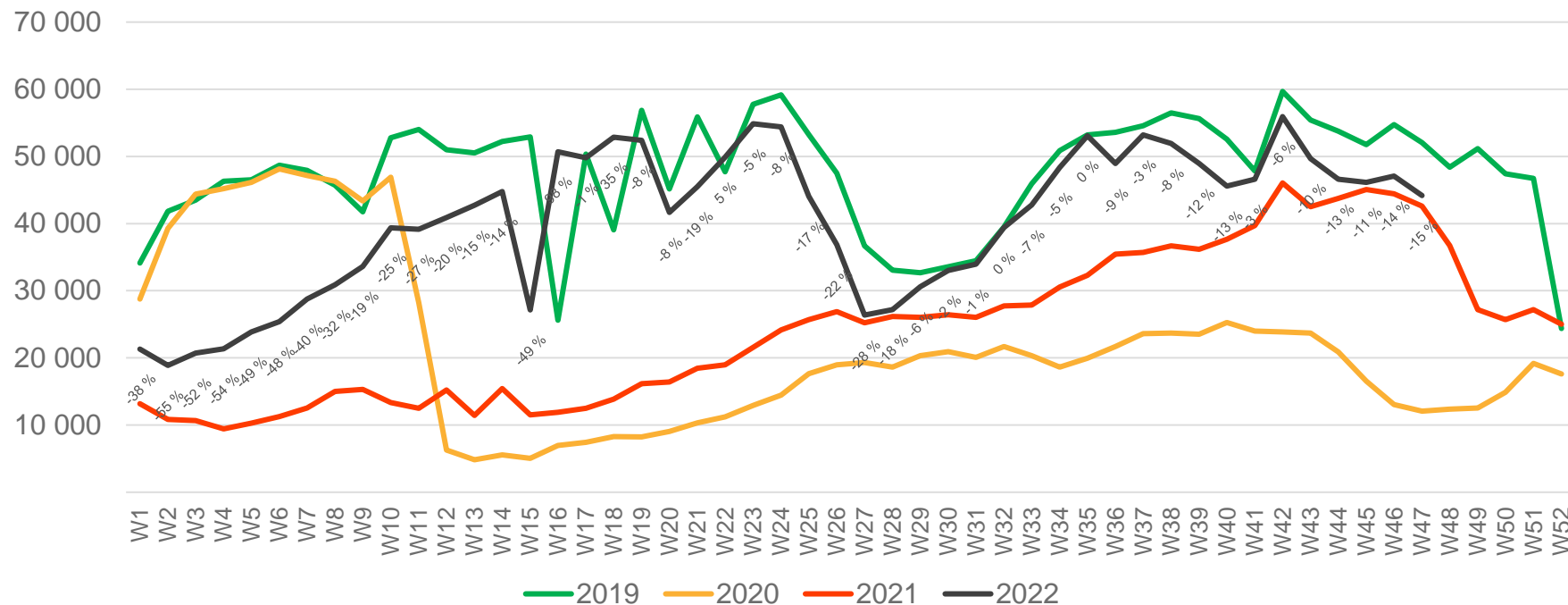
\* Week 1 2019 is 31/12-18 – 6/1-19. Week 1 2020 is 30/12-19 – 5/1-20. Week 52 2021 is 27/12-21 – 2/1-22.

# Passengers SVG international per week



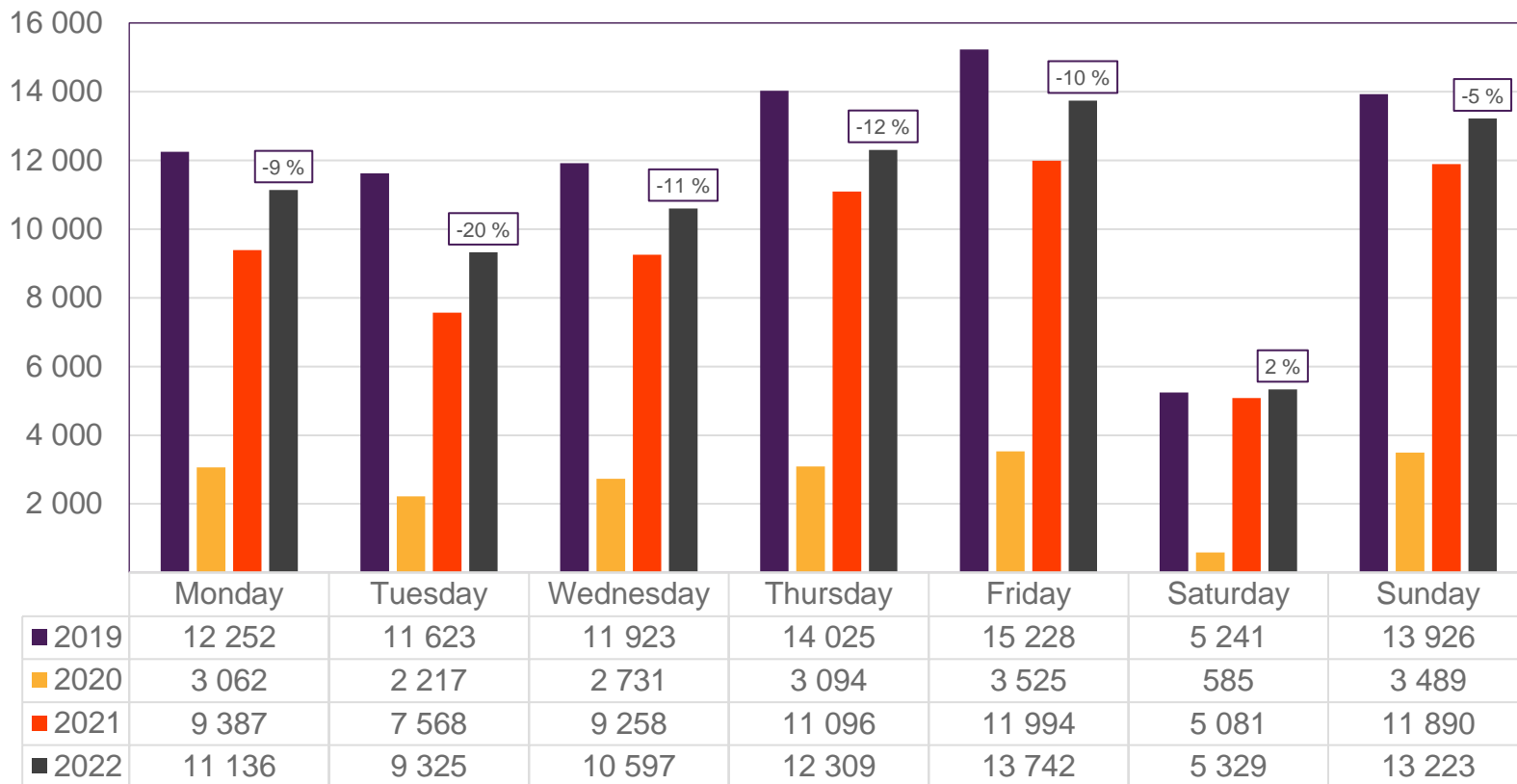
\* Week 1 2019 is 31/12-18 – 6/1-19. Week 1 2020 is 30/12-19 – 5/1-20. Week 52 2021 is 27/12-21 – 2/1-22.

# Passengers SVG domestic per week



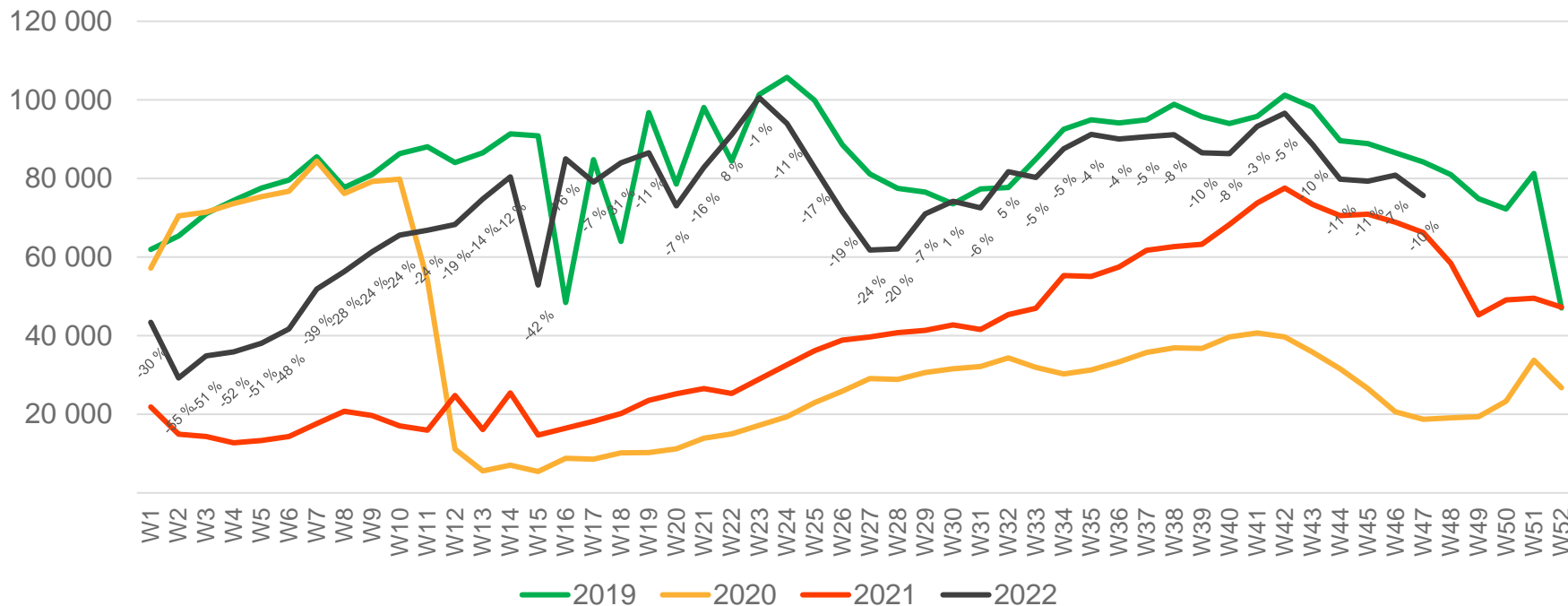
\* Week 1 2019 is 31/12-18 – 6/1-19. Week 1 2020 is 30/12-19 – 5/1-20. Week 52 2021 is 27/12-21 – 2/1-22.

# Passengers TRD total per day, week 47



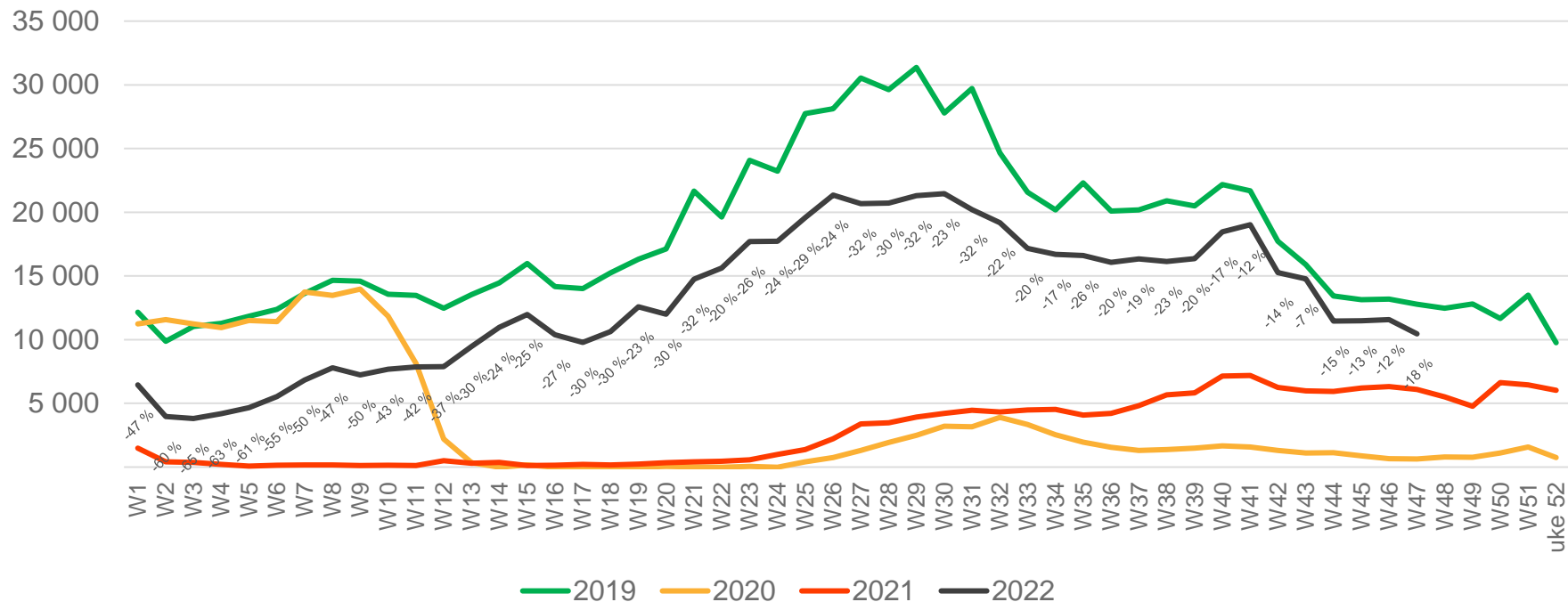
The deviation is measured towards 2019.

# Passengers TRD total per week



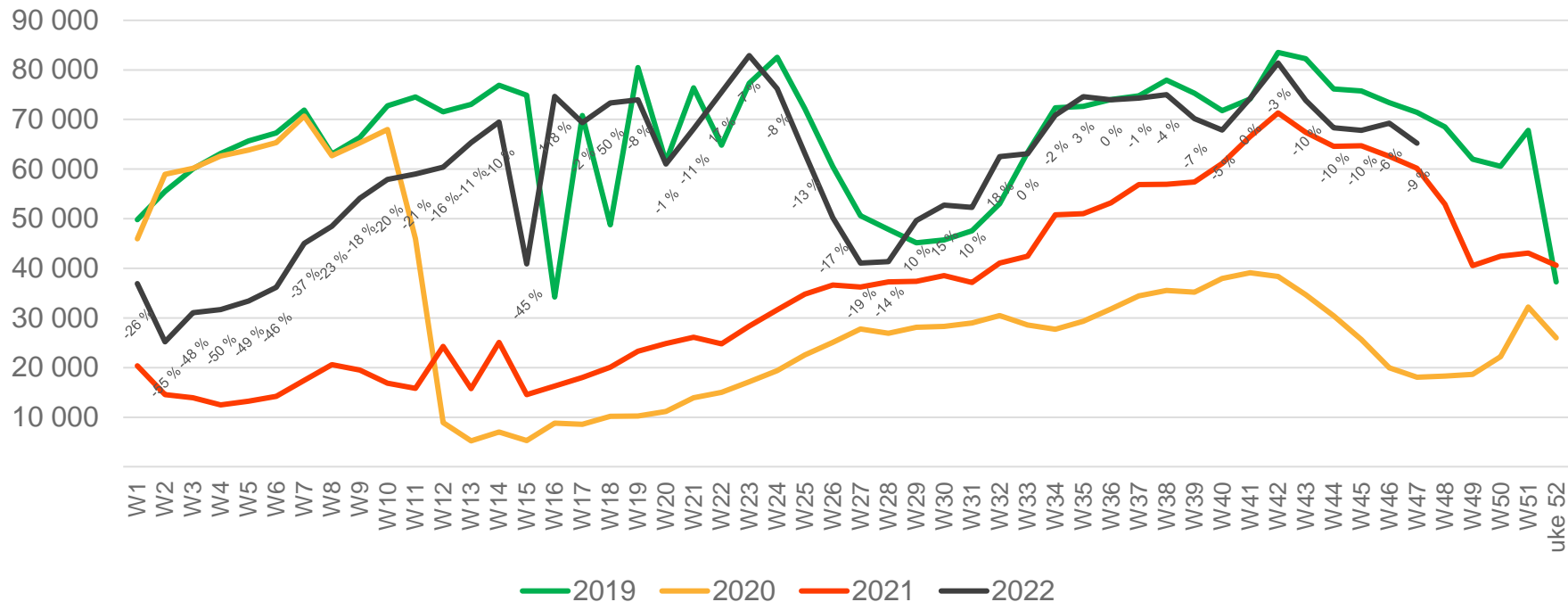
\* Week 1 2019 is 31/12-18 – 6/1-19. Week 1 2020 is 30/12-19 – 5/1-20. Week 52 2021 is 27/12-21 – 2/1-22.

# Passengers TRD international per week



\* Week 1 2019 is 31/12-18 – 6/1-19. Week 1 2020 is 30/12-19 – 5/1-20. Week 52 2021 is 27/12-21 – 2/1-22.

# Passengers TRD domestic per week



\* Week 1 2019 is 31/12-18 – 6/1-19. Week 1 2020 is 30/12-19 – 5/1-20. Week 52 2021 is 27/12-21 – 2/1-22.