



Passenger numbers per week

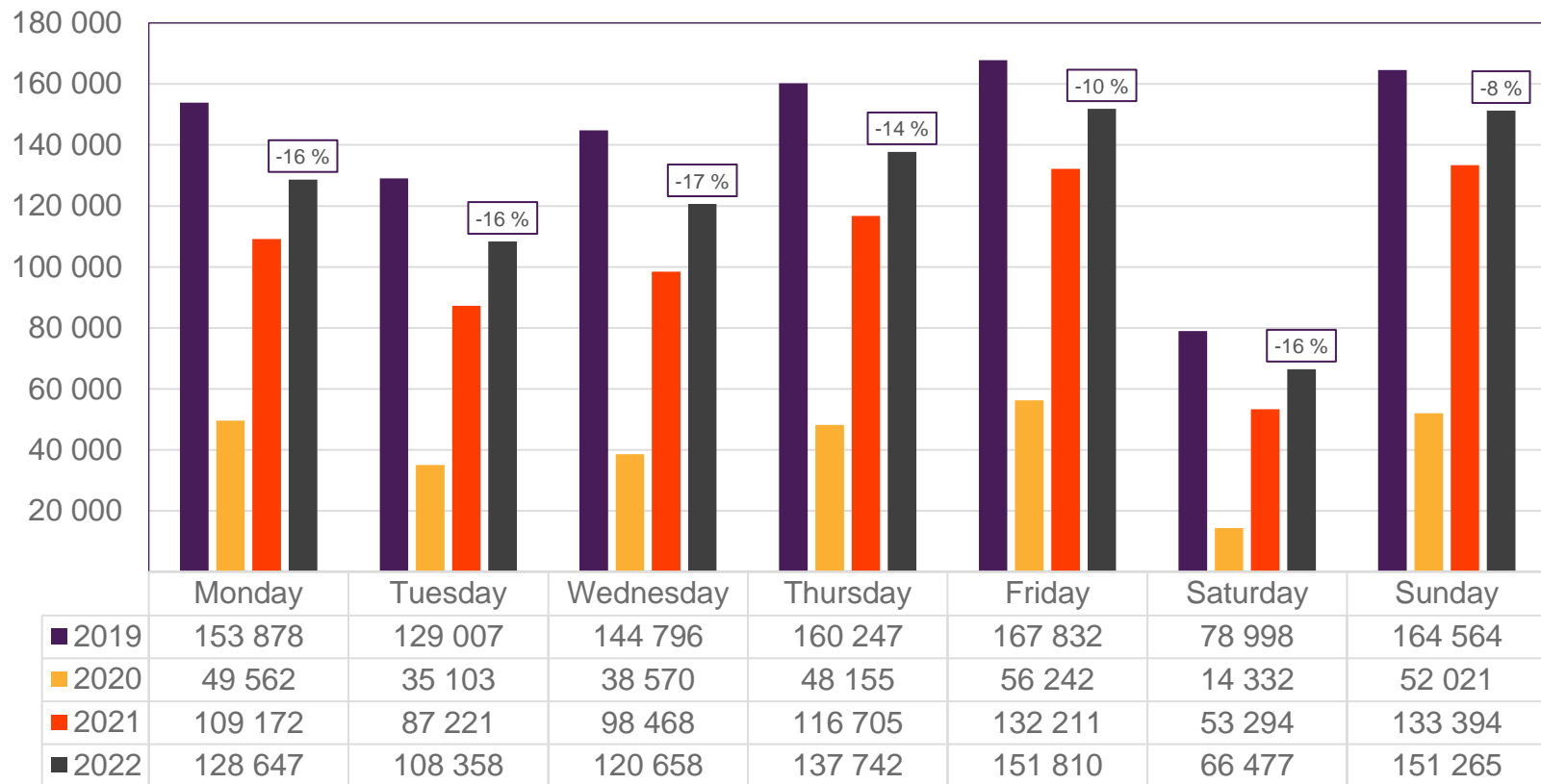
## Preliminary figures

- The figures for the previous week are preliminary. It takes some time for all passenger numbers to be reported, so the figures for the previous week may be 1-2% lower than the final figures.
- The figures are taken from Avinor's traffic database.
- Week 1 2019 include numbers from 2018 (31/12 2018)  
Week 1 2020 include numbers from 2019 (30-31/12 2019)  
Week 52 2021 include numbers from 2022 (1-2/1 2022)

# Top 10 airports, total week 44

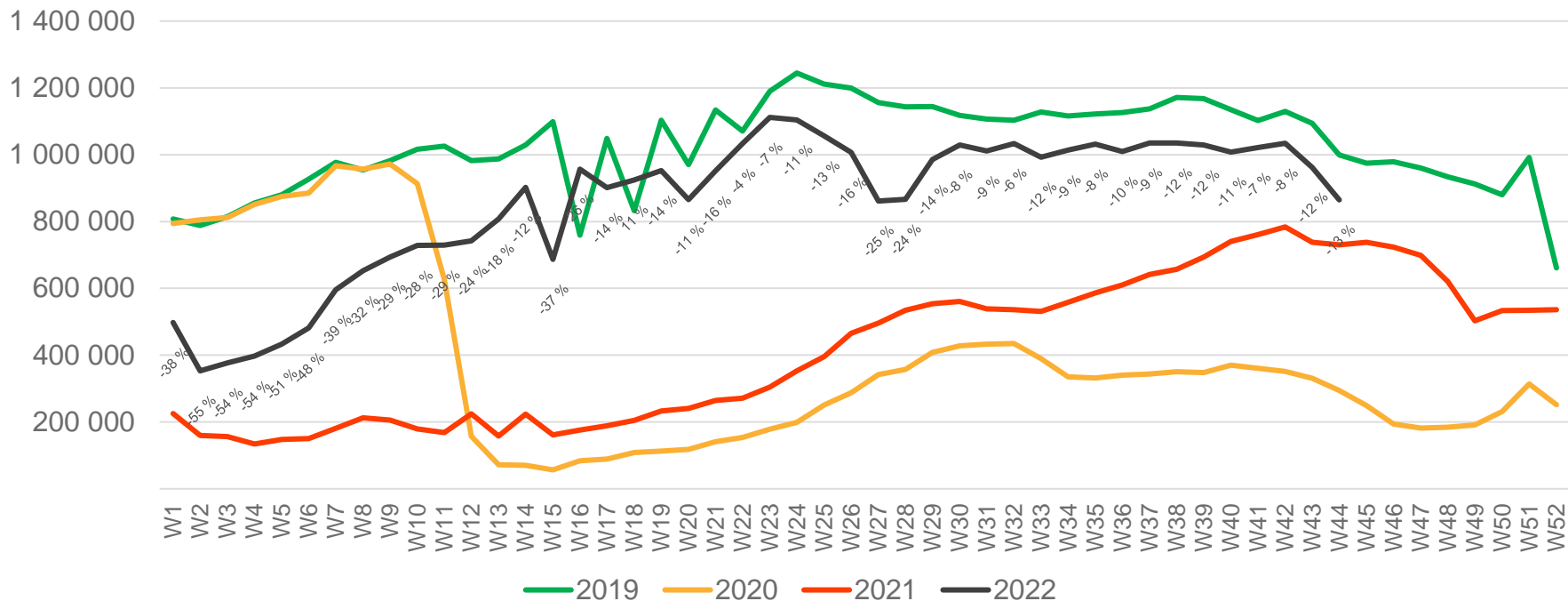
Airport	2019	2020	2021	2022	2022 vs. 2019		2022 vs. 2021	
					Change	Change %	Change	Change %
Oslo/Gardermoen	519 529	109 250	341 675	434 327	-85 202	-16 %	92 652	27 %
Bergen/Flesland	115 185	41 152	101 598	111 306	-3 879	-3 %	9 708	10 %
Trondheim/Værnes	89 613	31 581	70 564	79 419	-10 194	-11 %	8 855	13 %
Stavanger/Sola	78 887	23 783	56 434	68 084	-10 803	-14 %	11 650	21 %
Tromsø/Langnes	45 519	20 209	39 359	41 520	-3 999	-9 %	2 161	5 %
Bodø	33 808	16 390	28 546	30 304	-3 504	-10 %	1 758	6 %
Ålesund/Vigra	21 779	7 609	16 106	18 377	-3 402	-16 %	2 271	14 %
Kristiansand/Kjevik	20 221	5 956	13 726	14 344	-5 877	-29 %	618	5 %
Harstad/Narvik/Evenes	13 035	5 953	11 601	11 879	-1 156	-9 %	278	2 %
Bardufoss	3 472	1 828	2 877	3 479	7	0 %	602	21 %

# Passengers Avinor total per day, week 44



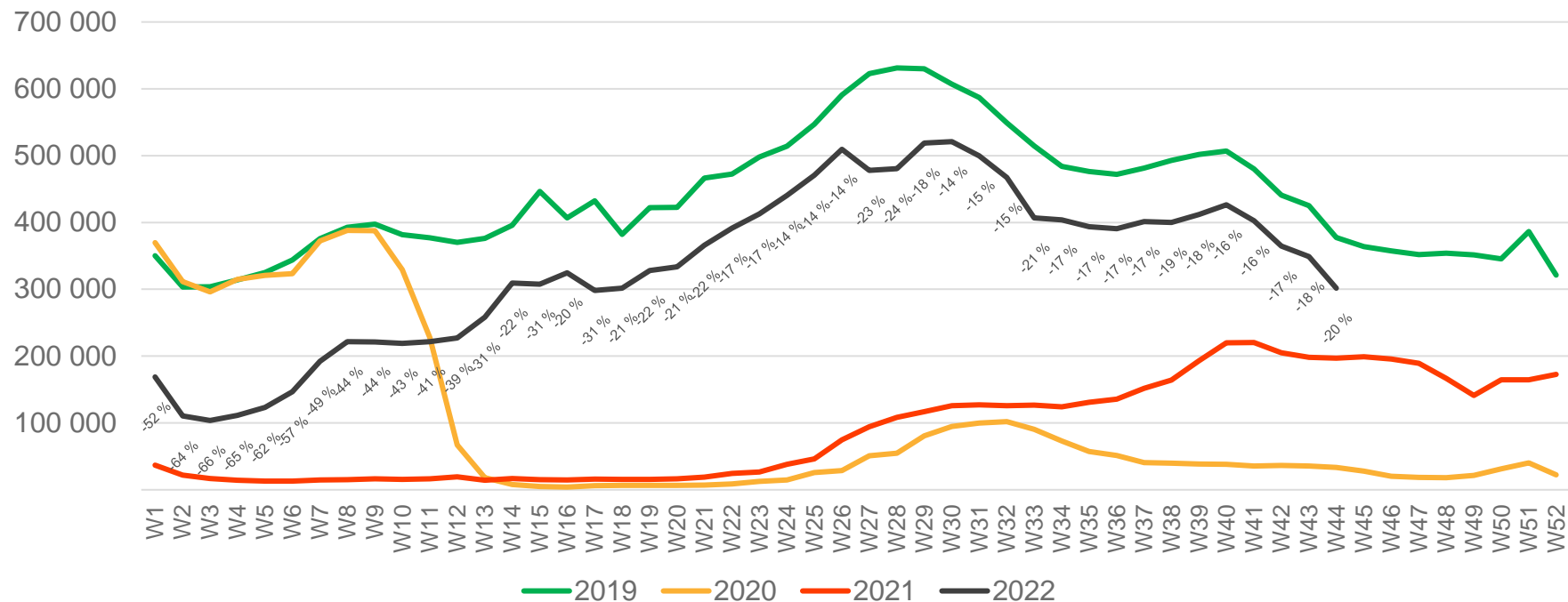
The deviation is measured towards 2019.

# Passengers Avinor total per week



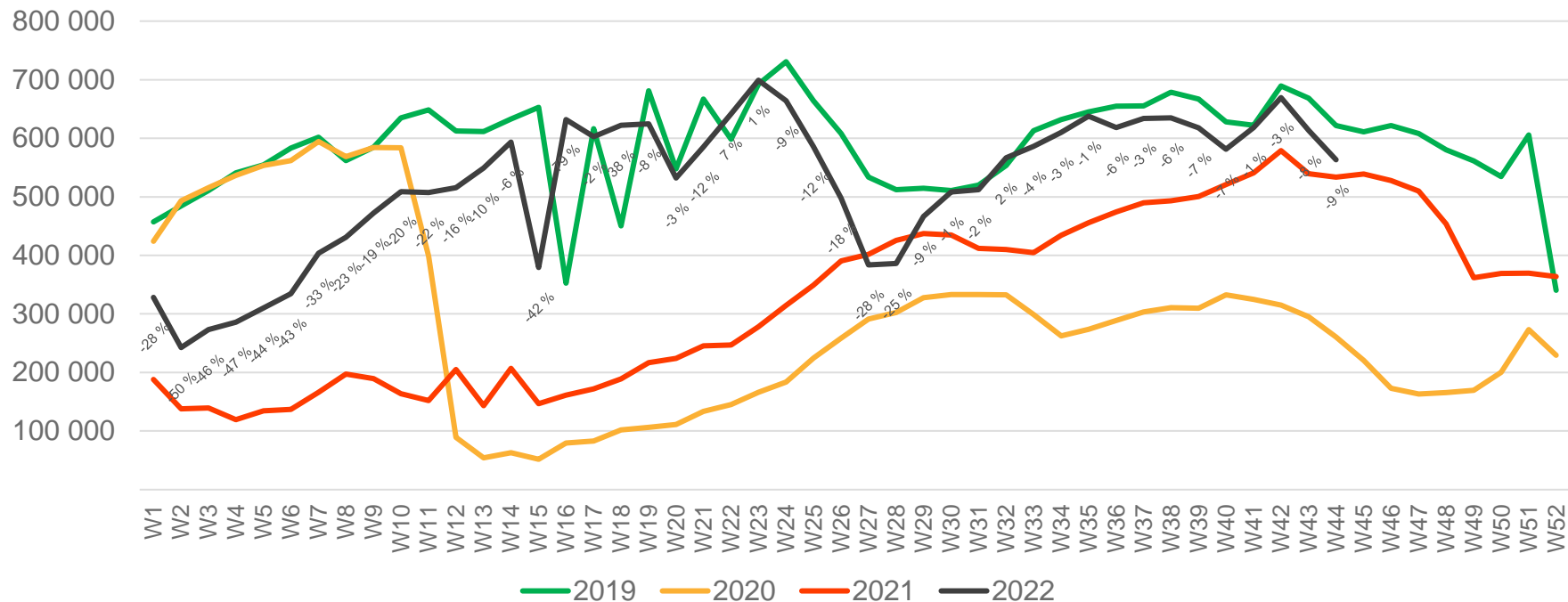
\* Week 1 2019 is 31/12-18 – 6/1-19. Week 1 2020 is 30/12-19 – 5/1-20. Week 52 2021 is 27/12-21 – 2/1-22.

# Passengers Avinor international per week



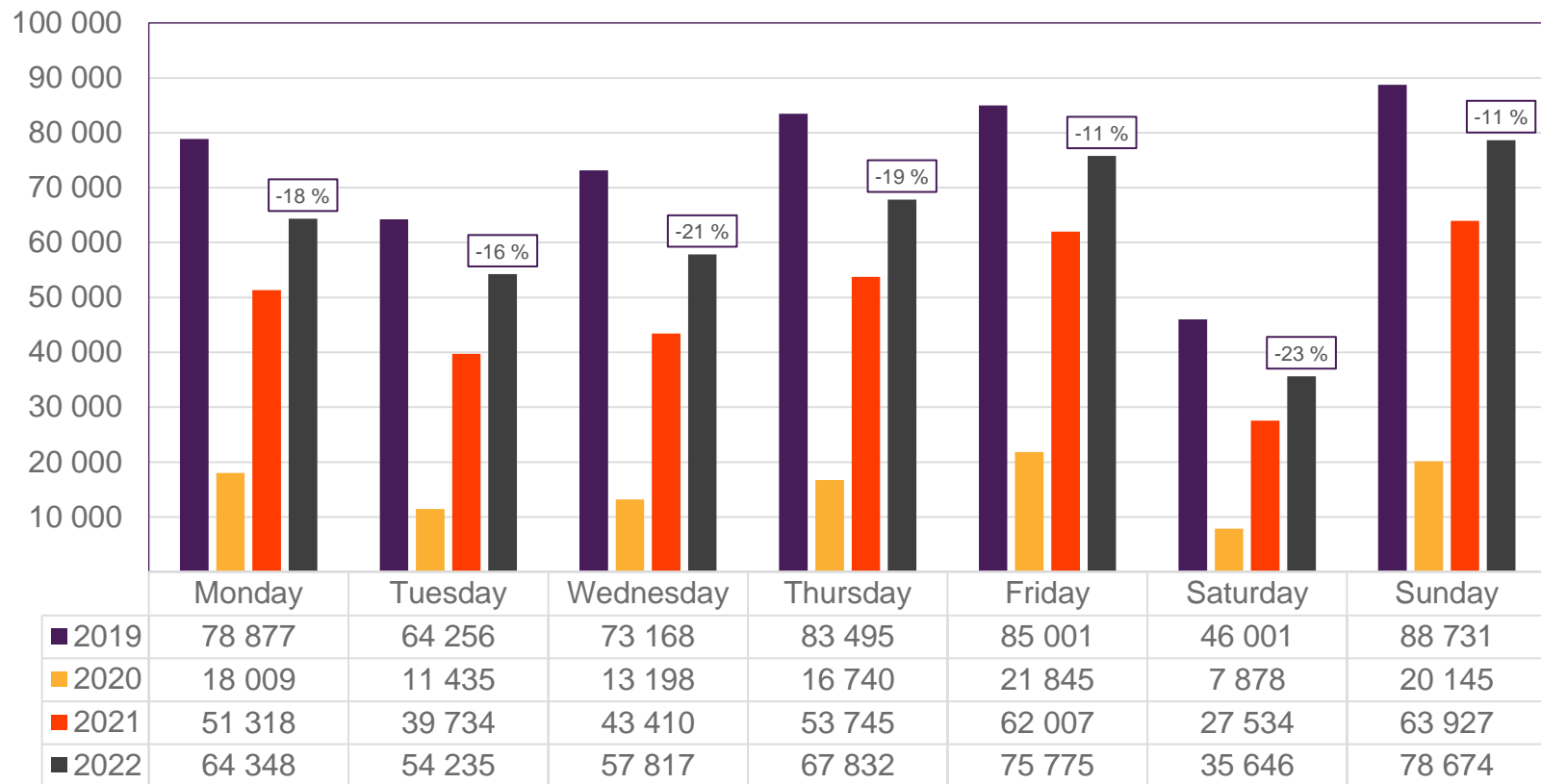
\* Week 1 2019 is 31/12-18 – 6/1-19. Week 1 2020 is 30/12-19 – 5/1-20. Week 52 2021 is 27/12-21 – 2/1-22.

# Passengers Avinor domestic per week



\* Week 1 2019 is 31/12-18 – 6/1-19. Week 1 2020 is 30/12-19 – 5/1-20. Week 52 2021 is 27/12-21 – 2/1-22.

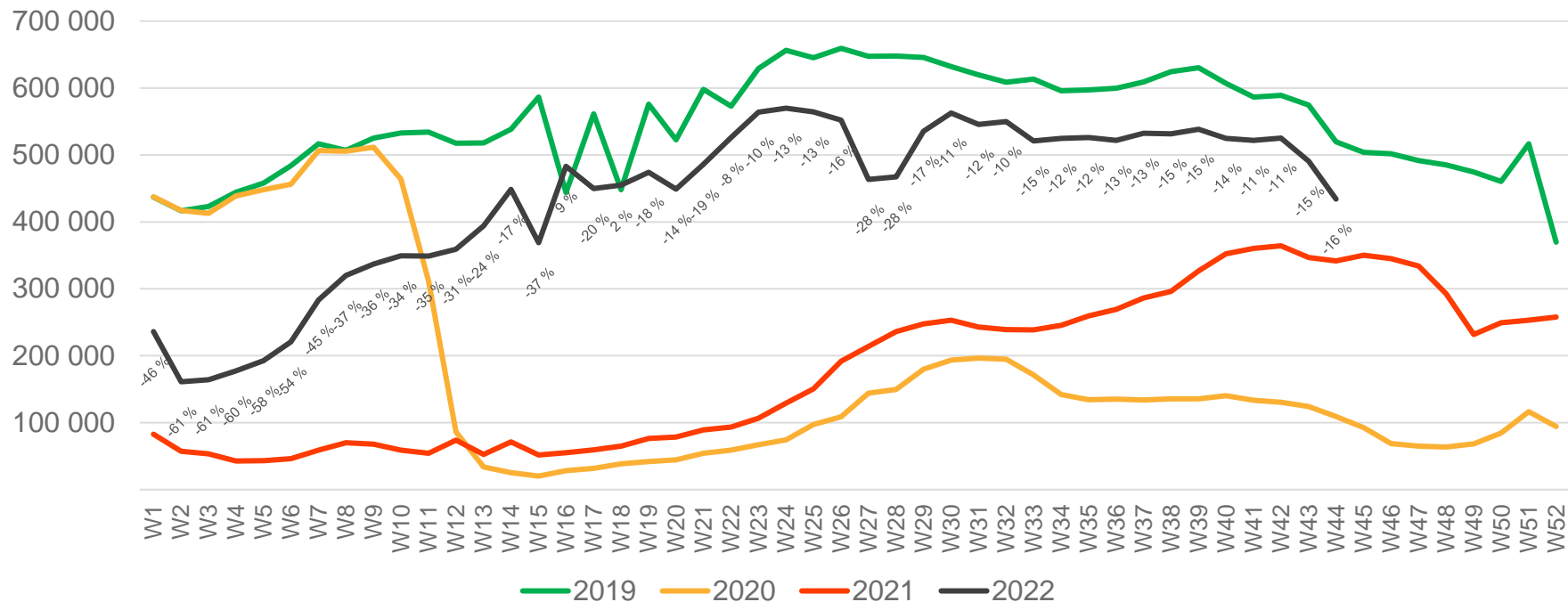
# Passengers OSL total per day, week 44



The deviation is measured towards 2019.



# Passengers OSL total per week

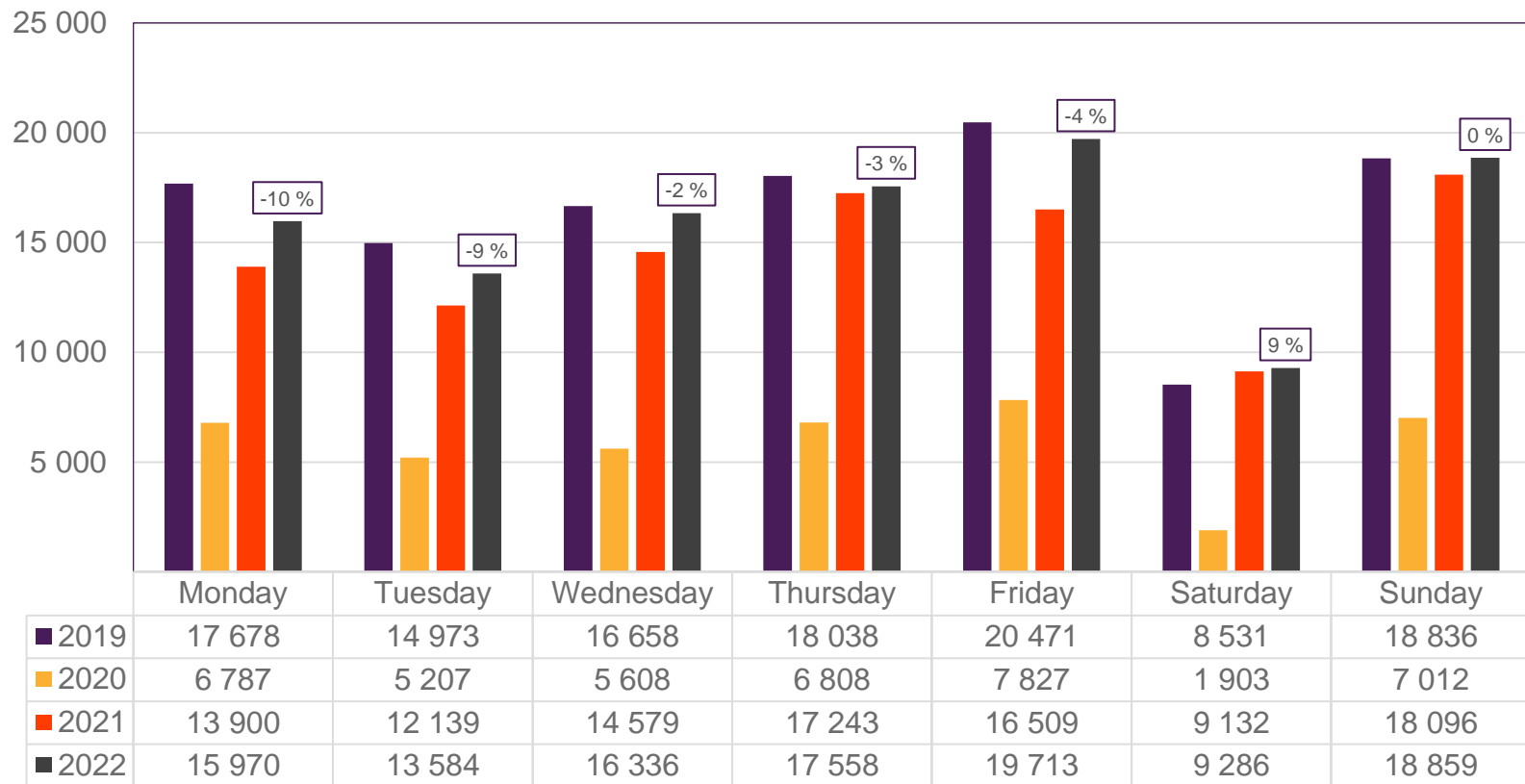


\* Week 1 2019 is 31/12-18 – 6/1-19. Week 1 2020 is 30/12-19 – 5/1-20. Week 52 2021 is 27/12-21 – 2/1-22.



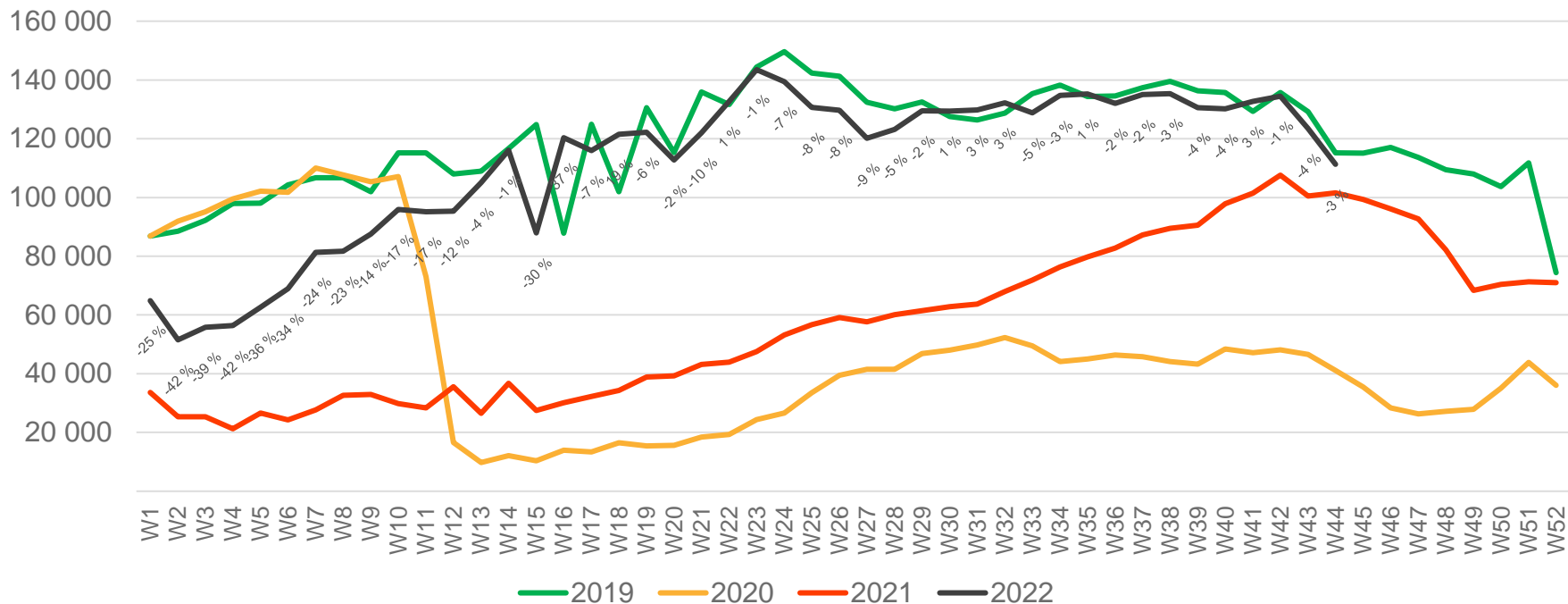


# Passengers BGO total per day, week 44



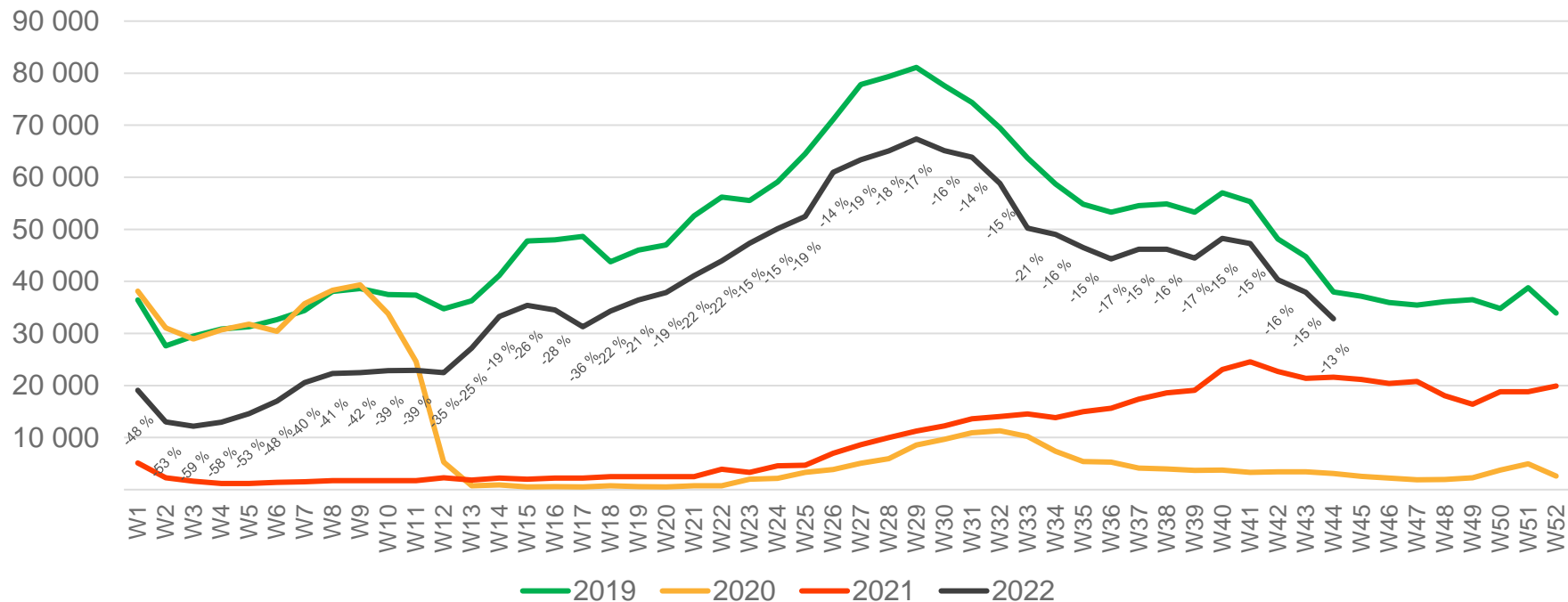
The deviation is measured towards 2019.

# Passengers BGO total per week



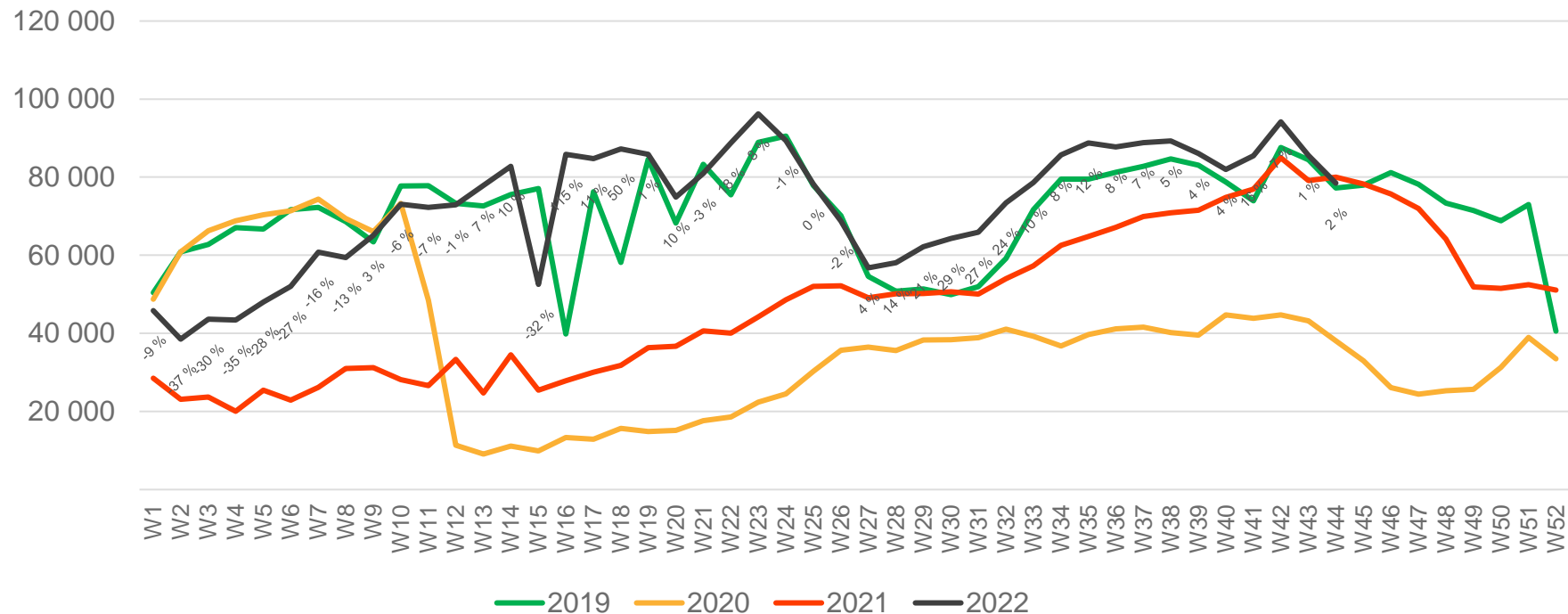
\* Week 1 2019 is 31/12-18 – 6/1-19. Week 1 2020 is 30/12-19 – 5/1-20. Week 52 2021 is 27/12-21 – 2/1-22.

# Passengers BGO international per week



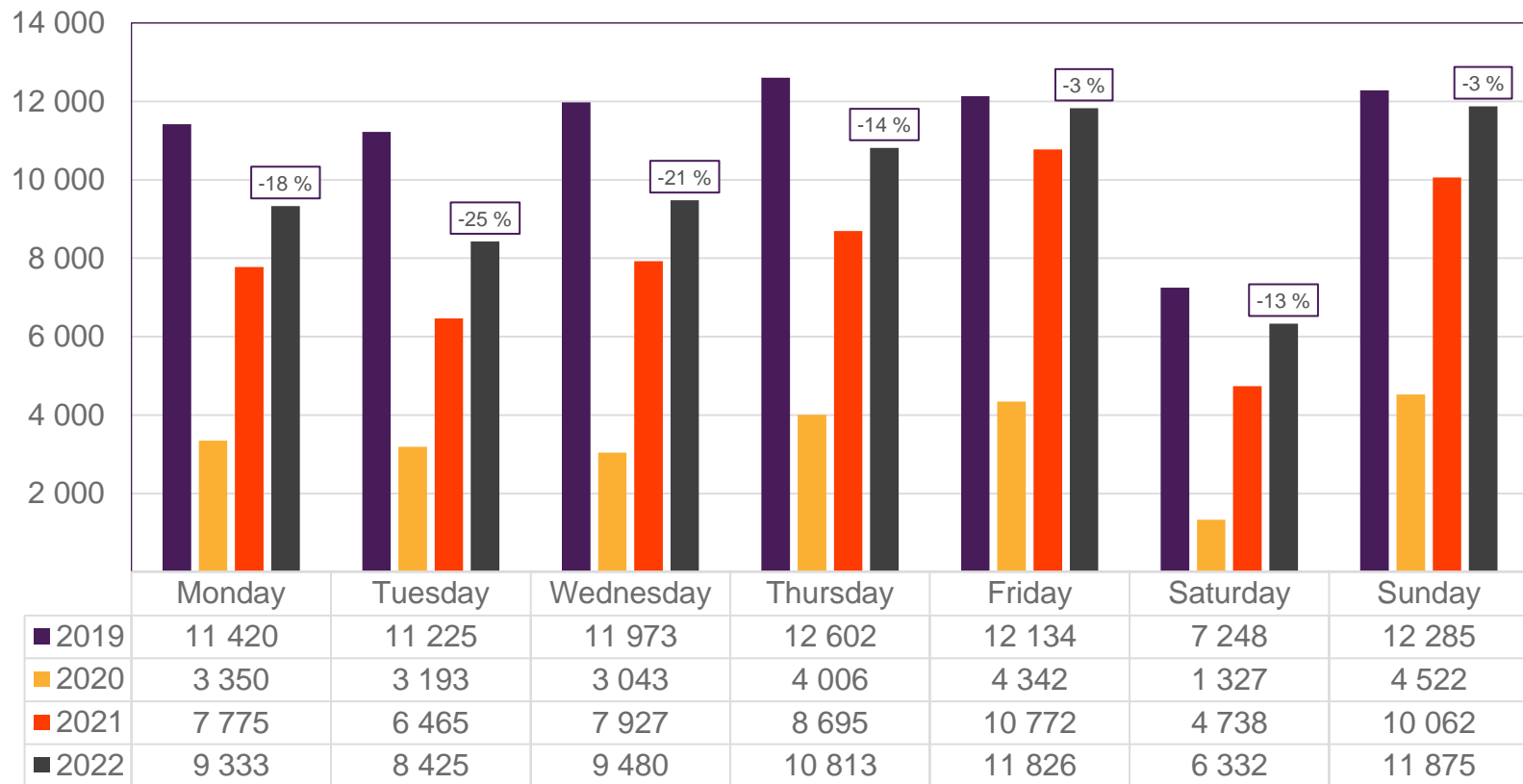
\* Week 1 2019 is 31/12-18 – 6/1-19. Week 1 2020 is 30/12-19 – 5/1-20. Week 52 2021 is 27/12-21 – 2/1-22.

# Passengers BGO domestic per week



\* Week 1 2019 is 31/12-18 – 6/1-19. Week 1 2020 is 30/12-19 – 5/1-20. Week 52 2021 is 27/12-21 – 2/1-22.

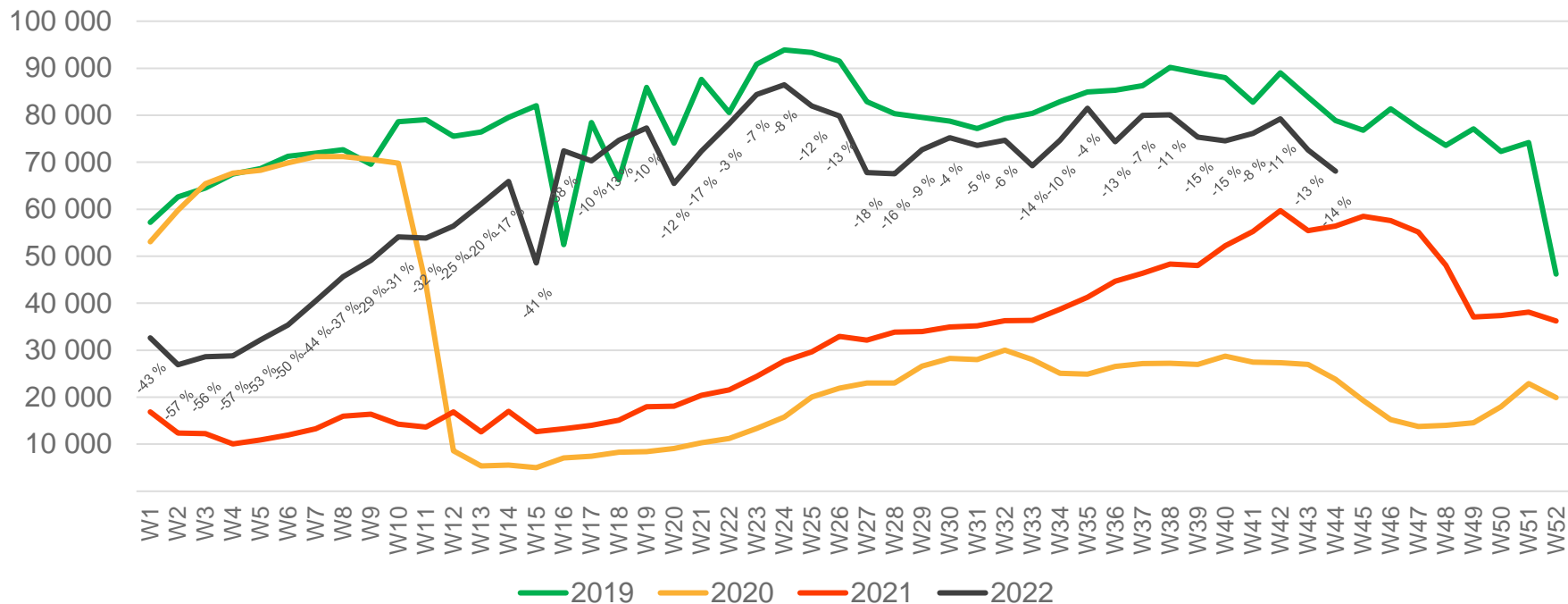
# Passengers SVG total per day, week 44



The deviation is measured towards 2019.

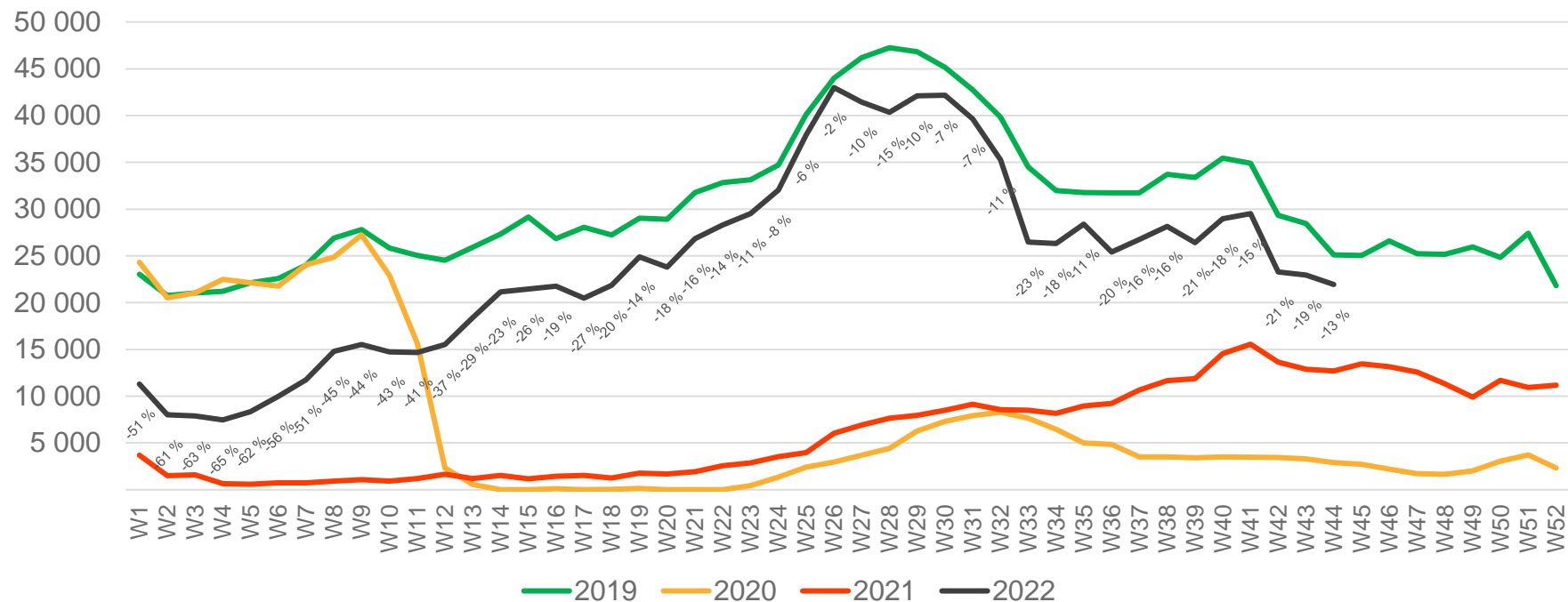


# Passengers SVG total per week



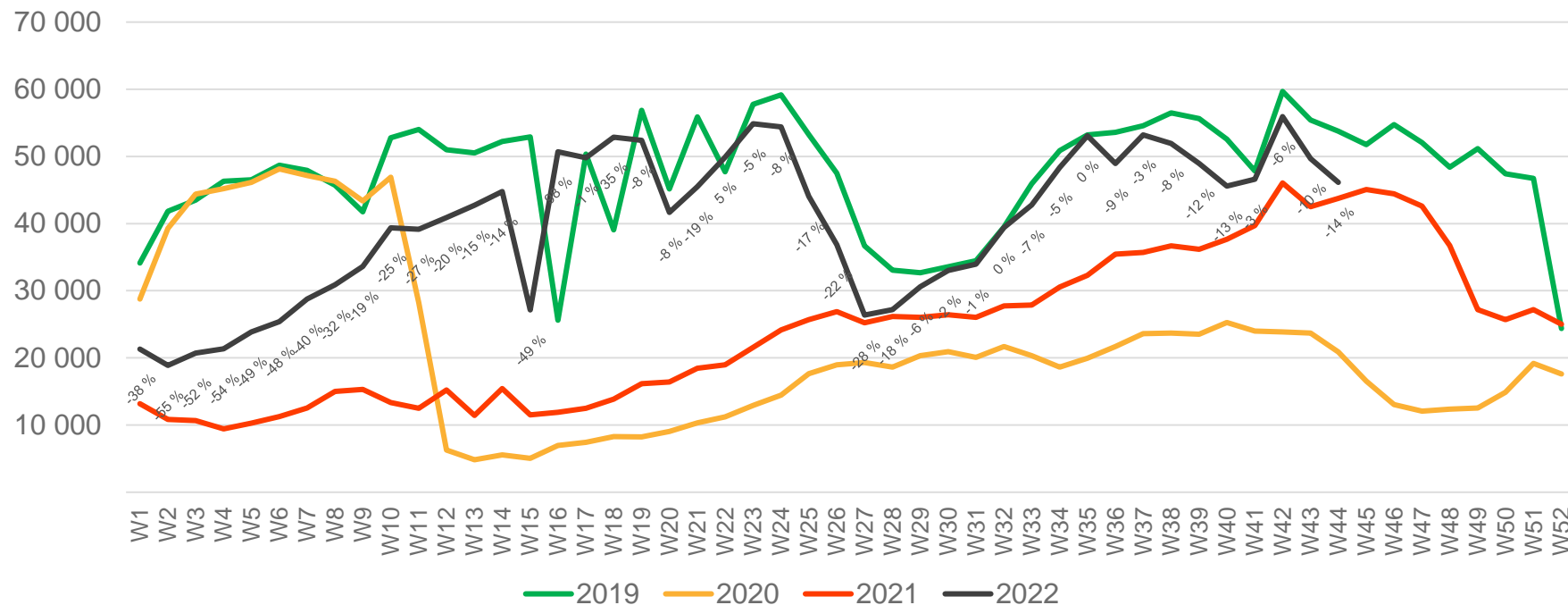
\* Week 1 2019 is 31/12-18 – 6/1-19. Week 1 2020 is 30/12-19 – 5/1-20. Week 52 2021 is 27/12-21 – 2/1-22.

# Passengers SVG international per week



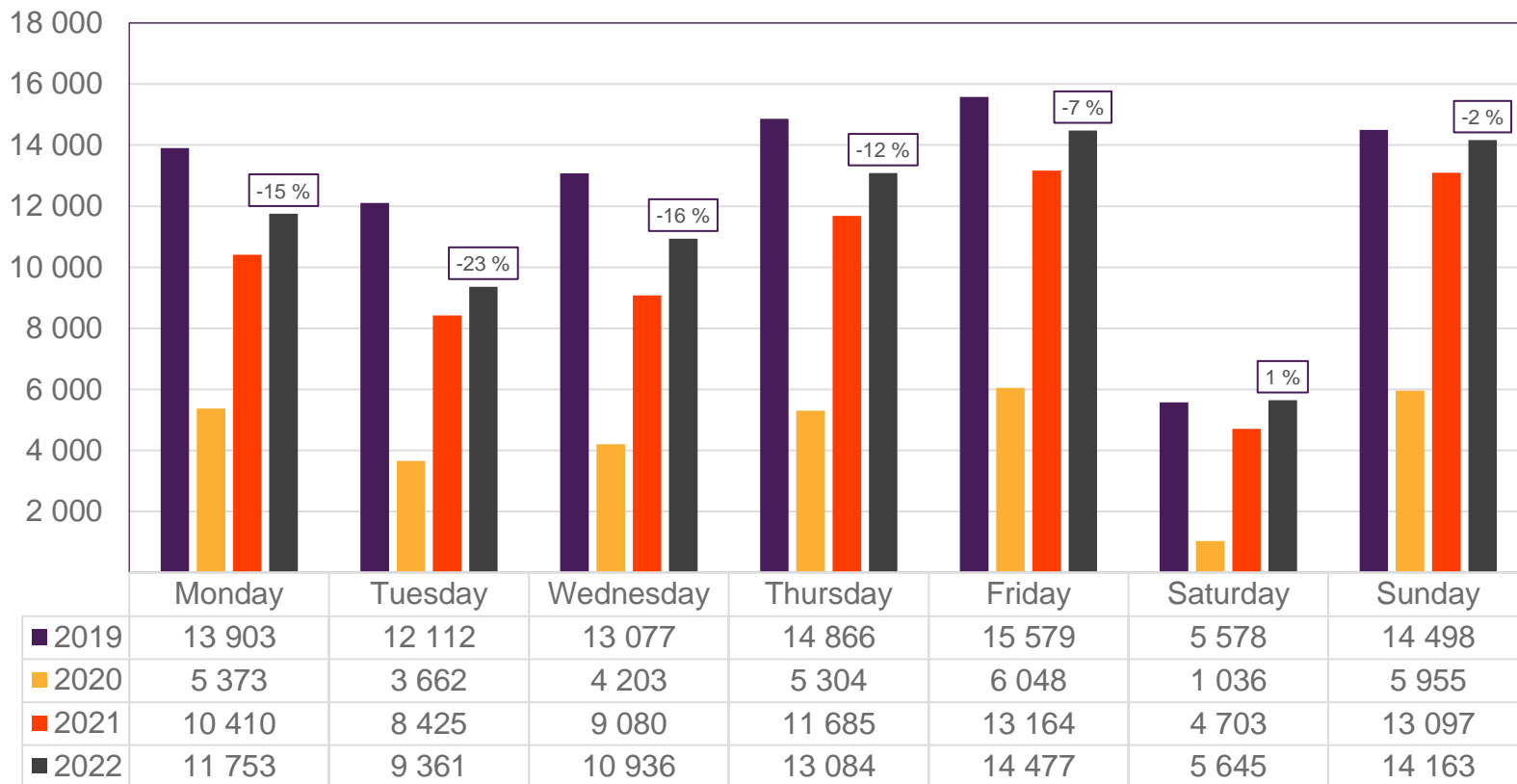
\* Week 1 2019 is 31/12-18 – 6/1-19. Week 1 2020 is 30/12-19 – 5/1-20. Week 52 2021 is 27/12-21 – 2/1-22.

# Passengers SVG domestic per week



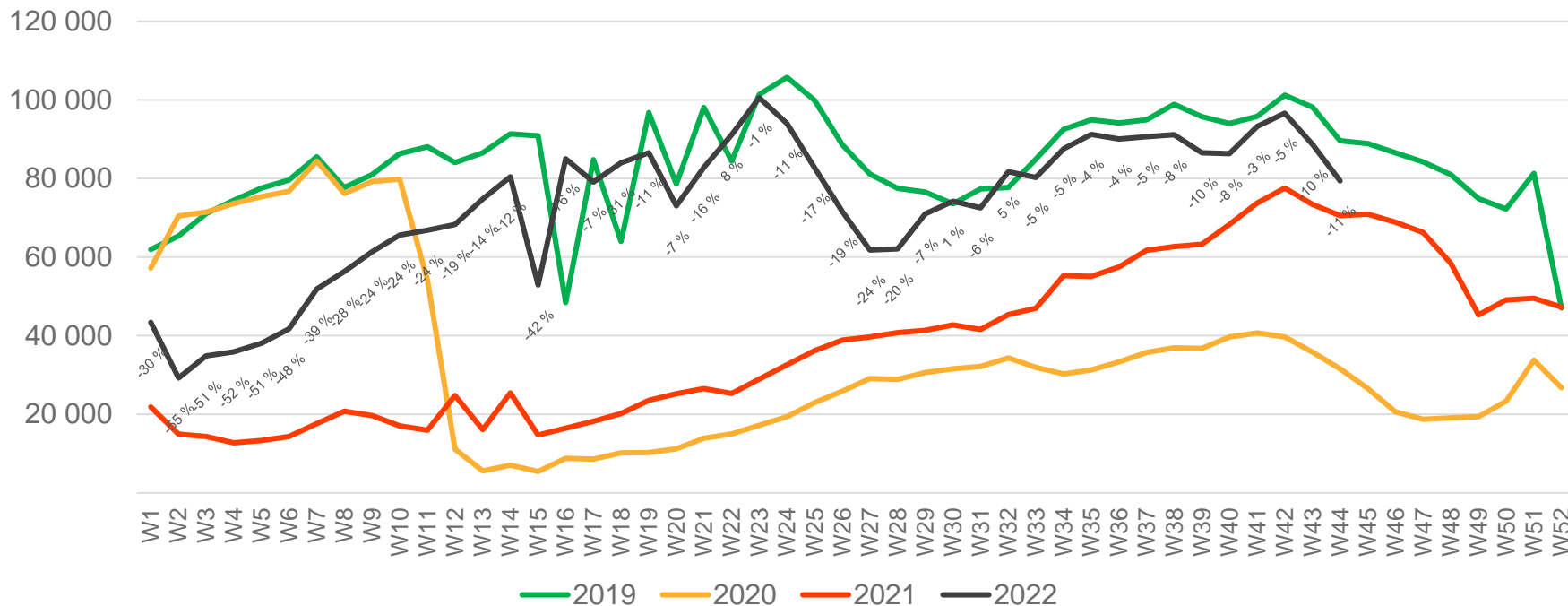
\* Week 1 2019 is 31/12-18 – 6/1-19. Week 1 2020 is 30/12-19 – 5/1-20. Week 52 2021 is 27/12-21 – 2/1-22.

# Passengers TRD total per day, week 44



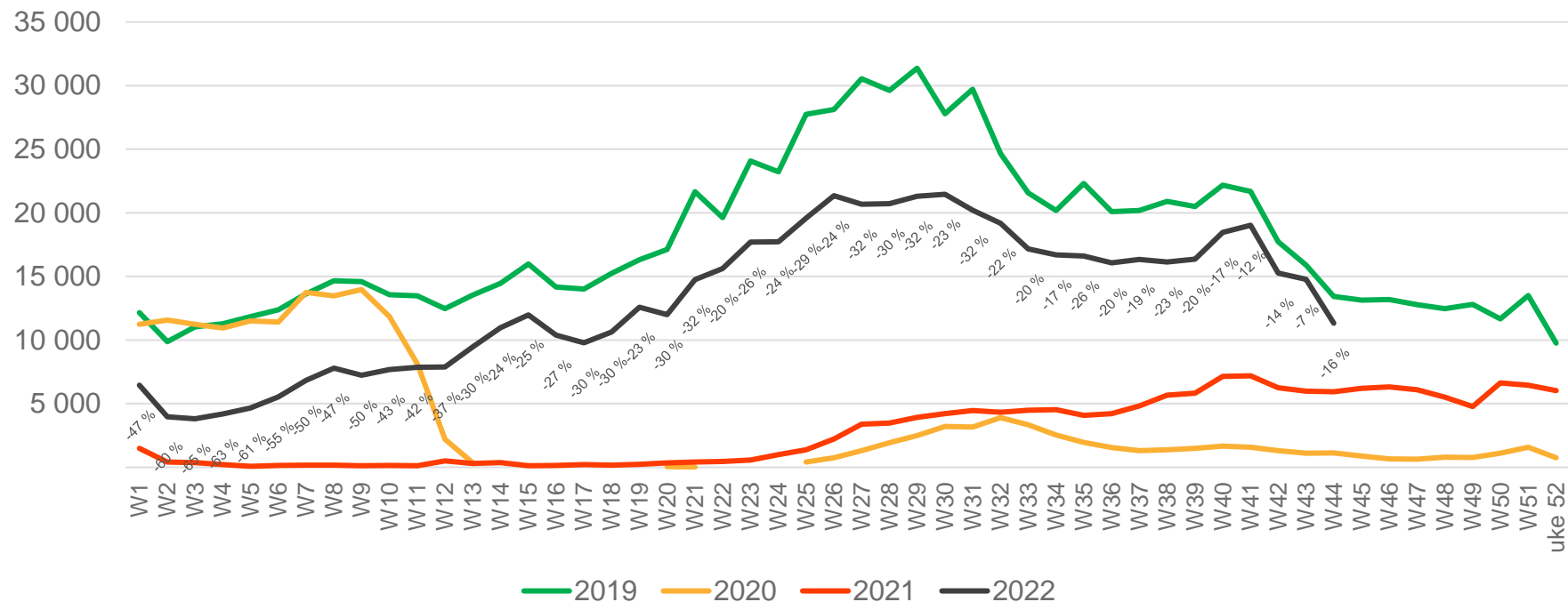
The deviation is measured towards 2019.

# Passengers TRD total per week



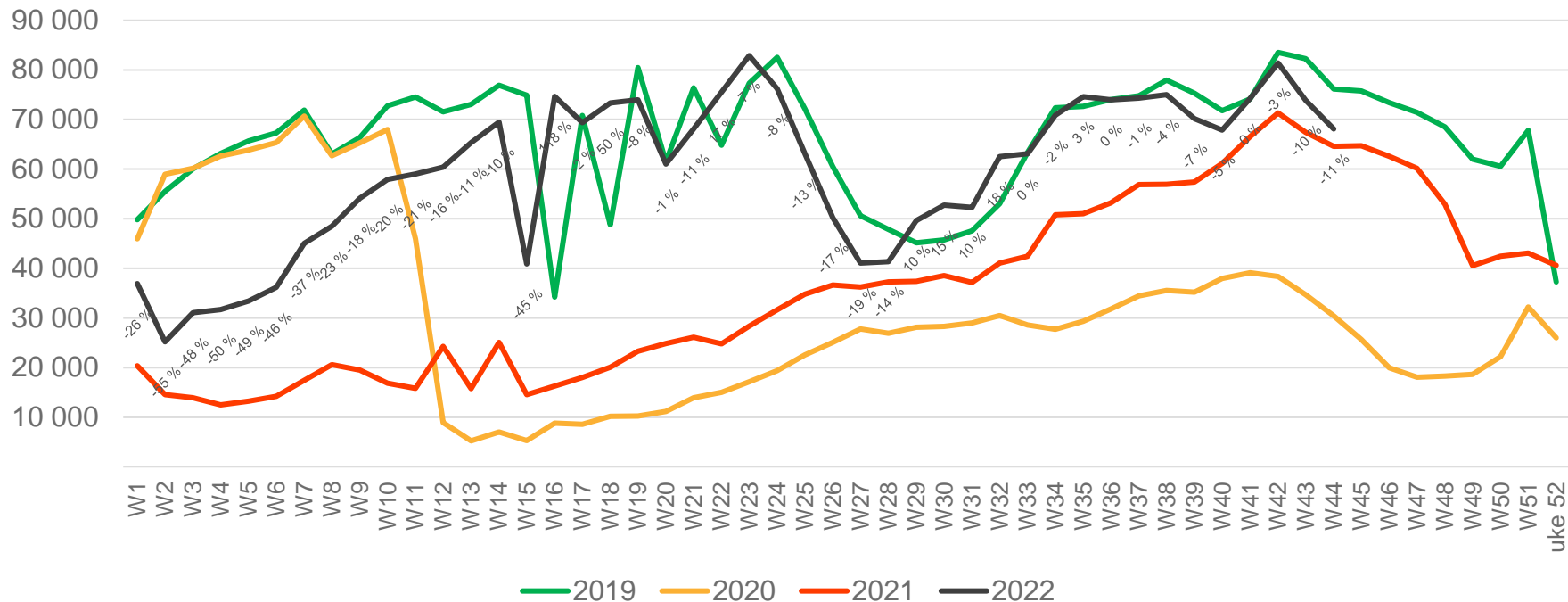
\* Week 1 2019 is 31/12-18 – 6/1-19. Week 1 2020 is 30/12-19 – 5/1-20. Week 52 2021 is 27/12-21 – 2/1-22.

# Passengers TRD international per week



\* Week 1 2019 is 31/12-18 – 6/1-19. Week 1 2020 is 30/12-19 – 5/1-20. Week 52 2021 is 27/12-21 – 2/1-22.

# Passengers TRD domestic per week



\* Week 1 2019 is 31/12-18 – 6/1-19. Week 1 2020 is 30/12-19 – 5/1-20. Week 52 2021 is 27/12-21 – 2/1-22.